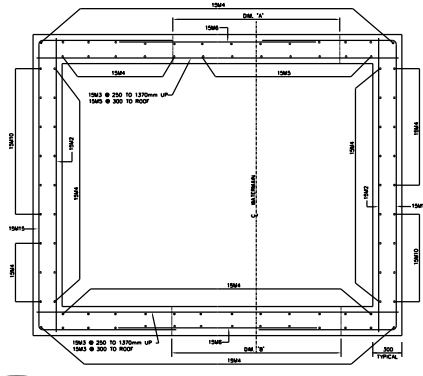
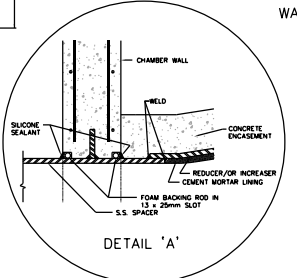


PLAN

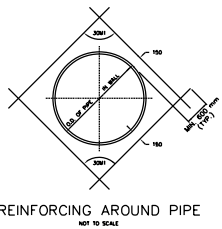
CHAMBER NO.	CHAM. 'X'	CHAM. 'Y'	CHAM. 'Z'	CHAM. 'V'	CHAM. 'W'



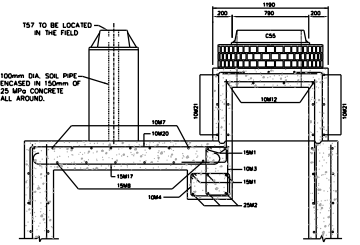
WALL SECTION



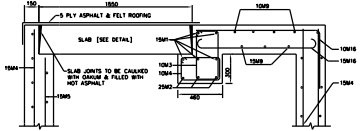
DETAIL 'A'



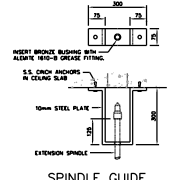
REINFORCING AROUND PIPE



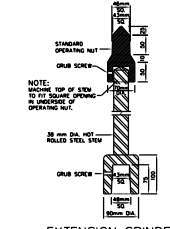
SECTION C-C



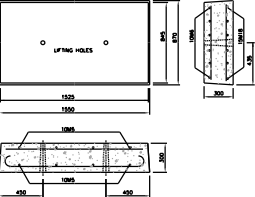
SECTION D-D



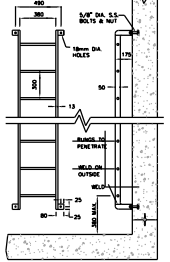
SPINDLE GUIDE BRACKET DETAIL



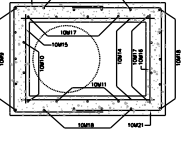
EXTENSION SPINDLE DETAIL



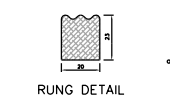
SLAB DETAIL



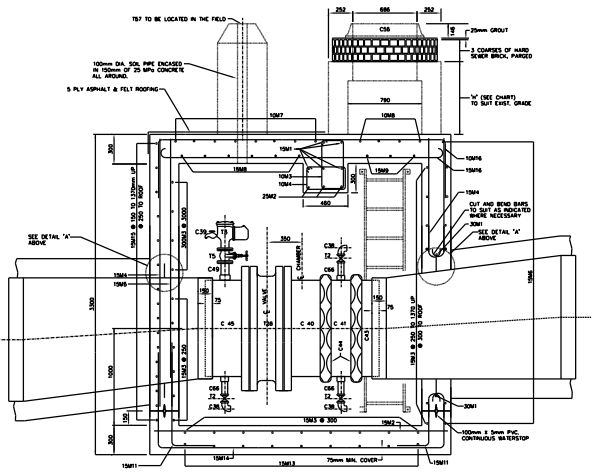
REMOVABLE ALUMINUM LADDER



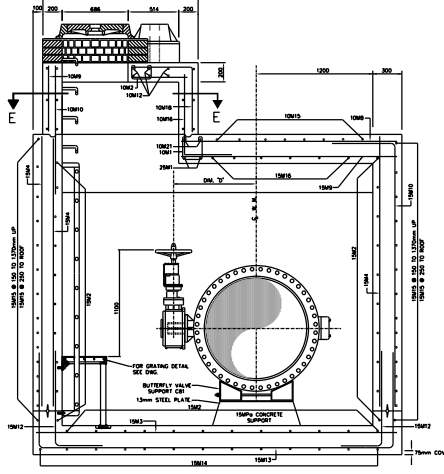
SECTION E-E



RUNG DETAIL



SECTION A-A



SECTION B-B

CHAMBER	CHAMBER NUMBER	CHAMBER TYPE	CHAMBER SIZE (mm)	CHAMBER LOCATION	CHAMBER TYPE	CHAMBER QUANTITY	CHAMBER NOTES

CHAMBERS

ALL DIMENSIONS SHOWN HERE ARE IN MILLIMETRES UNLESS OTHERWISE NOTED

- NOTES:
- 25MPa CONCRETE TO BE USED EXCEPT AS NOTED.
 - MAXIMUM SIZE OF COARSE AGGREGATE TO BE 20mm
 - COVER TO MAIN REINFORCEMENT TO BE 50mm OR AS INDICATED.
 - ALL BAR DIMENSIONS ARE OUT TO OUT.
 - BARS TO BE BENT COLD, MINIMUM INSIDE RADIUS TO 4 DIAMETERS.
 - ALL CROSSING BARS TO BE WELL WIRED.
 - ALL REINFORCING STEEL TO BE DEFORMED BULLET-STEEL BARS GRADE 500 CONFORMING TO C.S.A. STANDARD C30.2M.
 - ALL LAPS IN REINFORCING STEEL TO BE AT LEAST 30 DIAMETERS IN LENGTH OR AS SHOWN, AND TO BE STAGGERED.
 - ALL BRICKWORK TO BE OF HIGH QUALITY HARD SEWER BRICK, Laid IN FULL MORTAR BED AND JOINTS, PARGED INSIDE AND OUT.
 - WATERSTOP (PVC) TO BE PROVIDED AT ALL CONSTRUCTION JOINTS.
 - WHERE NECESSARY ADJUST REINFORCING STEEL TO SUIT WATERSTOPS AND OPENINGS.
 - PROVIDE SUMP PIT WITH GRATING AND SLOPE FLOOR TO SUMP 10mm/METRE.
 - DRAIN OUTLET TO BE LOCATED AT NEAREST POINT TO EXISTING SEWER IF ELEVATION OF SEWER IS HIGHER THAN CHAMBER FLOOR. DRAIN MAY BE CLAMPED TO THE WALL BY AN APPROVED METHOD. IF NO SEWER IS AVAILABLE DELETE DRAIN TYPE 'X' AND CONSTRUCT DRAIN TYPE 'Y' AND INSTALL PIPE WITH STOPPER AS SHOWN ON DWG.
 - DRAIN CONNECTION TO SEWER TO BE MADE BY CONTRACTOR UNLESS OTHERWISE STATED IN THE GENERAL SPECIFICATIONS.
 - LADDERS, GRATINGS AND RAILINGS TO BE ALUMINUM AND OF REMOVABLE TYPE WITH STAINLESS STEEL BOLTS.
 - TOP TWO STEPS AND ANY ADDITIONAL STEPS IN THE CHIMNEY TO BE OF THE REMOVABLE TYPE.
 - CHAMBERS DEEPER THAN 1200mm FROM SURFACE ELEVATION TO TOP OF VALVE OPERATING SPINDLE SHALL HAVE EXTENSION SPINDLE AND GUIDE BRACKET.
 - ALL ALUMINUM SURFACES CONTACTING CONCRETE TO RECEIVE ONE COAT OF BITUMINOUS PAINT.
 - 'Y' SERVICES ON HEIGHT (H) & BARS SHALL BE COATED TO ENQUIRE THAT THE BOTTOM BAR IS LESS THAN 150mm ABOVE THE ROOF CHAMBER.

BENDING SCHEDULE

BAR NO.	SHAPE	SIZE	LENGTH	NO. OF BARS	SHAPE	D.C.	NO. OF BENTS
1001	10	10	1000	1	10	10	0
1002	10	10	1000	1	10	10	0
1003	10	10	1000	1	10	10	0
1004	10	10	1000	1	10	10	0
1005	10	10	1000	1	10	10	0
1006	10	10	1000	1	10	10	0
1007	10	10	1000	1	10	10	0
1008	10	10	1000	1	10	10	0
1009	10	10	1000	1	10	10	0
1010	10	10	1000	1	10	10	0
1011	10	10	1000	1	10	10	0
1012	10	10	1000	1	10	10	0
1013	10	10	1000	1	10	10	0
1014	10	10	1000	1	10	10	0
1015	10	10	1000	1	10	10	0
1016	10	10	1000	1	10	10	0
1017	10	10	1000	1	10	10	0
1018	10	10	1000	1	10	10	0
1019	10	10	1000	1	10	10	0
1020	10	10	1000	1	10	10	0
1021	10	10	1000	1	10	10	0
1022	10	10	1000	1	10	10	0
1023	10	10	1000	1	10	10	0
1024	10	10	1000	1	10	10	0
1025	10	10	1000	1	10	10	0
1026	10	10	1000	1	10	10	0
1027	10	10	1000	1	10	10	0
1028	10	10	1000	1	10	10	0
1029	10	10	1000	1	10	10	0
1030	10	10	1000	1	10	10	0
1031	10	10	1000	1	10	10	0
1032	10	10	1000	1	10	10	0
1033	10	10	1000	1	10	10	0
1034	10	10	1000	1	10	10	0
1035	10	10	1000	1	10	10	0
1036	10	10	1000	1	10	10	0
1037	10	10	1000	1	10	10	0
1038	10	10	1000	1	10	10	0
1039	10	10	1000	1	10	10	0
1040	10	10	1000	1	10	10	0
1041	10	10	1000	1	10	10	0
1042	10	10	1000	1	10	10	0
1043	10	10	1000	1	10	10	0
1044	10	10	1000	1	10	10	0
1045	10	10	1000	1	10	10	0
1046	10	10	1000	1	10	10	0
1047	10	10	1000	1	10	10	0
1048	10	10	1000	1	10	10	0
1049	10	10	1000	1	10	10	0
1050	10	10	1000	1	10	10	0
1051	10	10	1000	1	10	10	0
1052	10	10	1000	1	10	10	0
1053	10	10	1000	1	10	10	0
1054	10	10	1000	1	10	10	0
1055	10	10	1000	1	10	10	0
1056	10	10	1000	1	10	10	0
1057	10	10	1000	1	10	10	0
1058	10	10	1000	1	10	10	0
1059	10	10	1000	1	10	10	0
1060	10	10	1000	1	10	10	0
1061	10	10	1000	1	10	10	0
1062	10	10	1000	1	10	10	0
1063	10	10	1000	1	10	10	0
1064	10	10	1000	1	10	10	0
1065	10	10	1000	1	10	10	0
1066	10	10	1000	1	10	10	0
1067	10	10	1000	1	10	10	0
1068	10	10	1000	1	10	10	0
1069	10	10	1000	1	10	10	0
1070	10	10	1000	1	10	10	0
1071	10	10	1000	1	10	10	0
1072	10	10	1000	1	10	10	0
1073	10	10	1000	1	10	10	0
1074	10	10	1000	1	10	10	0
1075	10	10	1000	1	10	10	0
1076	10	10	1000	1	10	10	0
1077	10	10	1000	1	10	10	0
1078	10	10	1000	1	10	10	0
1079	10	10	1000	1	10	10	0
1080	10	10	1000	1	10	10	0
1081	10	10	1000	1	10	10	0
1082	10	10	1000	1	10	10	0
1083	10	10	1000	1	10	10	0
1084	10	10	1000	1	10	10	0
1085	10	10	1000	1	10	10	0
1086	10	10	1000	1	10	10	0
1087	10	10	1000	1	10	10	0
1088	10	10	1000	1	10	10	0
1089	10	10	1000	1	10	10	0
1090	10	10	1000	1	10	10	0
1091	10	10	1000	1	10	10	0
1092	10	10	1000	1	10	10	0
1093	10	10	1000	1	10	10	0
1094	10	10	1000	1	10	10	0
1095	10	10	1000	1	10	10	0
1096	10	10	1000	1	10	10	0
1097	10	10	1000	1	10	10	0
1098	10	10	1000	1	10	10	0
1099	10	10	1000	1	10	10	0
1100	10	10	1000	1	10	10	0
1101	10	10	1000	1	10	10	0
1102	10	10	1000	1	10	10	0
1103	10	10	1000	1	10	10	0
1104	10	10	1000	1	10	10	0
1105	10	10	1000	1	10	10	0
1106	10	10	1000	1	10	10	0
1107	10	10	1000	1	10	10	0
1108	10	10	1000	1	10	10	0
1109	10	10	1000	1	10	10	0
1110	10	10	1000	1	10	10	0

MATERIAL LIST

MARK	SUPPLIED BY CONTRACTOR	MARK	SUPPLIED BY CONTRACTOR
T2	2-100mm WALL TY BODY/SHALL OUTSIDE WEAT	C01	1-900mm FABRICATED S.S. FLU-VICT CONNECTION
T3	1-100mm WINDSTOP PER STEP AND VALVE PLUG	C02	1-900mm FABRICATED S.S. VCT. TO ICE SPACER
T4	1-100mm GATE VALVE (FLANGED)	C03	1-900mm VCT. COUPLING, STEEL#A CONNECTION
T5	1-100mm BACKWATER CHECK VALVE	C04	1-900mm VCT. COUPLING, STEEL#A SHOULDER
T6	1-100mm BACKWATER CHECK VALVE	C05	1-900mm FABRICATED S.S. FLANGE ASSEMBLY
T7	1-100mm CENTRE PLUG FOR CHAMBER COVER	C06	2-100mm TO 800mm REDUCERS
T8	1-800mm HOR. BUTTERFLY VALVE ASSEMBLY	C07	1-REMOVABLE ALUM. LADDER WITH RUBBER GIGETS (FULL FACE ONE PCE)
T9	1-800mm HOR. BUTTERFLY VALVE ASSEMBLY	C08	1-C.C. MANNING TRAP WITH CLEANOUT & COVER
T10	1-800mm HOR. BUTTERFLY VALVE ASSEMBLY	C09	1-150mm S.S. PIPE
T11	1-800mm HOR. BUTTERFLY VALVE ASSEMBLY	C10	1-SUMP WITH FRAME AND GRATING
T12	1-800mm HOR. BUTTERFLY VALVE ASSEMBLY	C11	1-STEEL PLATE, 300mm x 80mm x 6mm
T13	1-800mm HOR. BUTTERFLY VALVE ASSEMBLY	C12	2-STANDARD BUTTERFLY VALVE SUPPORTS
T14	1-800mm HOR. BUTTERFLY VALVE ASSEMBLY	C13	2-STANDARD BUTTERFLY VALVE SUPPORTS
T15	1-800mm HOR. BUTTERFLY VALVE ASSEMBLY	C14	2-STANDARD BUTTERFLY VALVE SUPPORTS
T16	1-800mm HOR. BUTTERFLY VALVE ASSEMBLY	C15	2-STANDARD BUTTERFLY VALVE SUPPORTS
T17	1-800mm HOR. BUTTERFLY VALVE ASSEMBLY	C16	2-STANDARD BUTTERFLY VALVE SUPPORTS
T18	1-800mm HOR. BUTTERFLY VALVE ASSEMBLY	C17	2-STANDARD BUTTERFLY VALVE SUPPORTS
T19	1-800mm HOR. BUTTERFLY VALVE ASSEMBLY	C18	2-STANDARD BUTTERFLY VALVE SUPPORTS
T20	1-800mm HOR. BUTTERFLY VALVE ASSEMBLY	C19	2-STANDARD BUTTERFLY VALVE SUPPORTS
T21	1-800mm HOR. BUTTERFLY VALVE ASSEMBLY	C20	2-STANDARD BUTTERFLY VALVE SUPPORTS
T22	1-800mm HOR. BUTTERFLY VALVE ASSEMBLY	C21	2-STANDARD BUTTERFLY VALVE SUPPORTS
T23	1-800mm HOR. BUTTERFLY VALVE ASSEMBLY	C22	2-STANDARD BUTTERFLY VALVE SUPPORTS
T24	1-800mm HOR. BUTTERFLY VALVE ASSEMBLY	C23	2-STANDARD BUTTERFLY VALVE SUPPORTS
T25	1-800mm HOR. BUTTERFLY VALVE ASSEMBLY	C24	2-STANDARD BUTTERFLY VALVE SUPPORTS
T26	1-800mm HOR. BUTTERFLY VALVE ASSEMBLY	C25	2-STANDARD BUTTERFLY VALVE SUPPORTS
T27	1-800mm HOR. BUTTERFLY VALVE ASSEMBLY	C26	2-STANDARD BUTTERFLY VALVE SUPPORTS
T28	1-800mm HOR. BUTTERFLY VALVE ASSEMBLY	C27	2-STANDARD BUTTERFLY VALVE SUPPORTS
T29	1-800mm HOR. BUTTERFLY VALVE ASSEMBLY	C28	2-STANDARD BUTTERFLY VALVE SUPPORTS
T30	1-800mm HOR. BUTTERFLY VALVE ASSEMBLY	C29	2-STANDARD BUTTERFLY VALVE SUPPORTS
T31	1-800mm HOR. BUTTERFLY VALVE ASSEMBLY	C30	2-STANDARD BUTTERFLY VALVE SUPPORTS
T32	1-800mm HOR. BUTTERFLY VALVE ASSEMBLY	C31	2-STANDARD BUTTERFLY VALVE SUPPORTS
T33	1-800mm HOR. BUTTERFLY VALVE ASSEMBLY	C32	2-STANDARD BUTTERFLY VALVE SUPPORTS
T34	1-800mm HOR. BUTTERFLY VALVE ASSEMBLY	C33	2-STANDARD BUTTERFLY VALVE SUPPORTS
T35	1-800mm HOR. BUTTERFLY VALVE ASSEMBLY	C34	2-STANDARD BUTTERFLY VALVE SUPPORTS
T36	1-800mm HOR. BUTTERFLY VALVE ASSEMBLY	C35	2-STANDARD BUTTERFLY VALVE SUPPORTS
T37	1-800mm HOR. BUTTERFLY VALVE ASSEMBLY	C36	2-STANDARD BUTTERFLY VALVE SUPPORTS
T38	1-800mm HOR. BUTTERFLY VALVE ASSEMBLY	C37	2-STANDARD BUTTERFLY VALVE SUPPORTS
T39	1-800mm HOR. BUTTERFLY VALVE ASSEMBLY	C38	2-STANDARD BUTTERFLY VALVE SUPPORTS
T40	1-800mm HOR. BUTTERFLY VALVE ASSEMBLY	C39	2-STANDARD BUTTERFLY VALVE SUPPORTS
T41	1-800mm HOR. BUTTERFLY VALVE ASSEMBLY	C40	2-STANDARD BUTTERFLY VALVE SUPPORTS
T42	1-800mm HOR. BUTTERFLY VALVE ASSEMBLY	C41	2-STANDARD BUTTERFLY VALVE SUPPORTS
T43	1-800mm HOR. BUTTERFLY VALVE ASSEMBLY		