



# Dwight Avenue Sidewalk

Virtual Public Meeting

Thursday September 23, 2021



We acknowledge the land we are on is the traditional territory of many nations, including the Mississaugas of the Credit, the Anishnabeg, the Chippewa, the Haudenosaunee and the Wendat peoples and is now home to many diverse First Nations, Inuit and Métis peoples.

We also acknowledge that Toronto is covered by Treaty 13 with the Mississaugas of the Credit.



Topic	Time
Introduction	6:30 - 6:40 p.m.
Agenda Presentation	6:40 - 7:15 p.m.
Q&A Period	7:15 - 7:45 p.m.
Next Steps	7:45 - 8:00 p.m.



Councillor Mark Grimes  
City of Toronto, Ward 3  
Etobicoke-Lakeshore



# Purpose of this Event



---

To inform the community about the proposed **sidewalk and accessibility upgrades** on Dwight Avenue



---

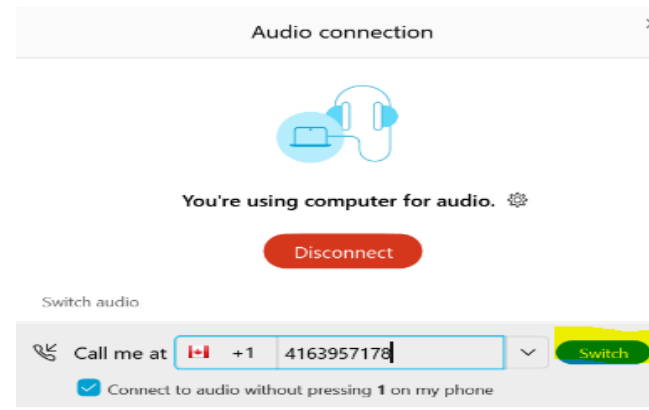
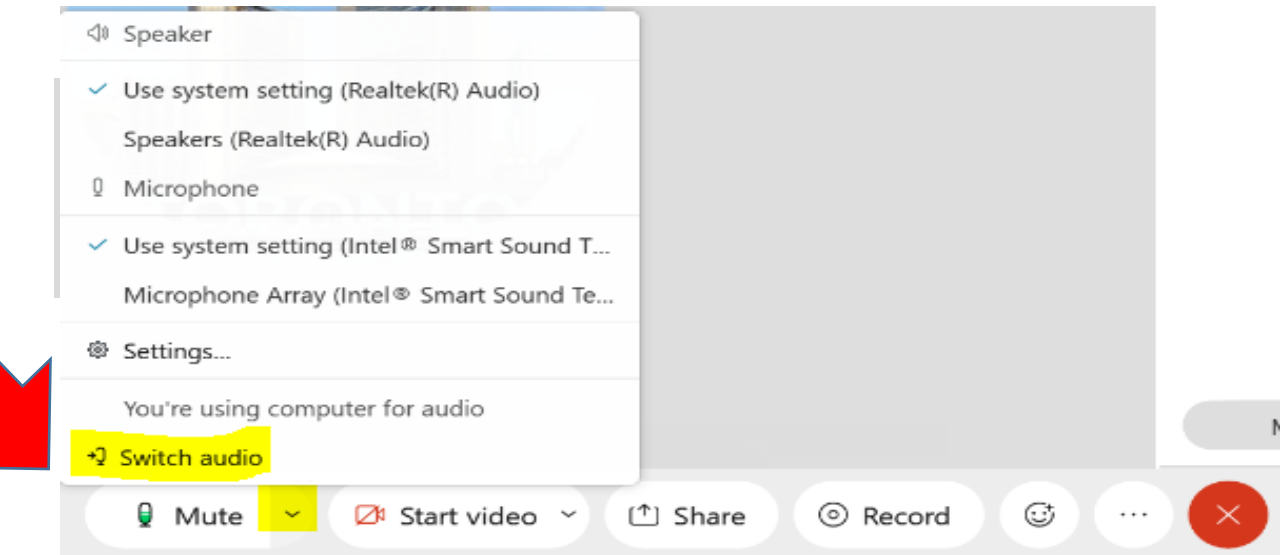
To provide an opportunity for the **public to ask questions** and provide feedback

# Webex Audio Trouble?



## Webex can call you!

1. Click **the arrow** beside your mute button
2. Click **“Switch audio”**
3. Use **“Call me”** function
  - Enter your phone #
  - Webex will call your phone
  - No long distance charges



Still not working? Try this!



## Call Into the Meeting

Dial: **416-915-6530**

When prompted for a meeting number enter:

**2459 569 2606**

# Participating by Computer

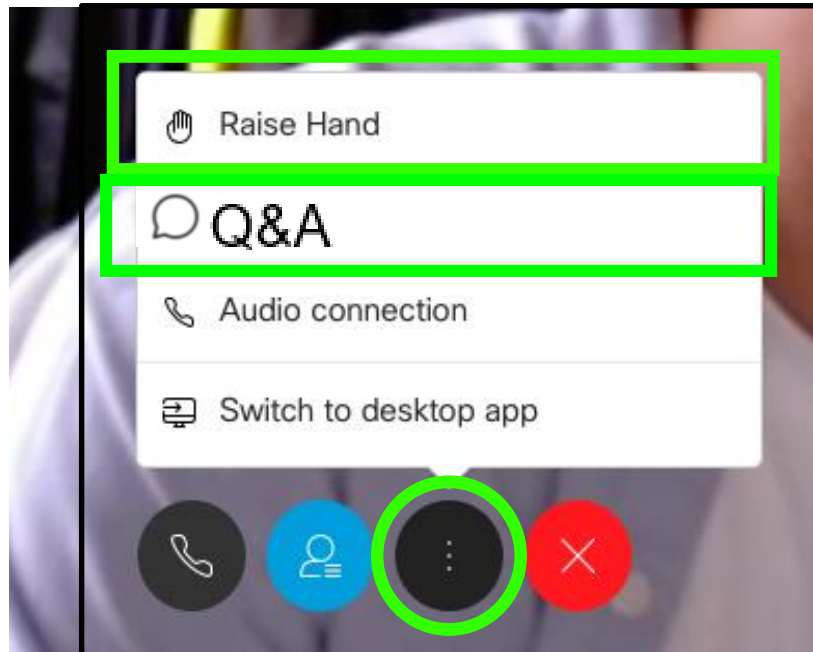


**Raise your hand or type your question**



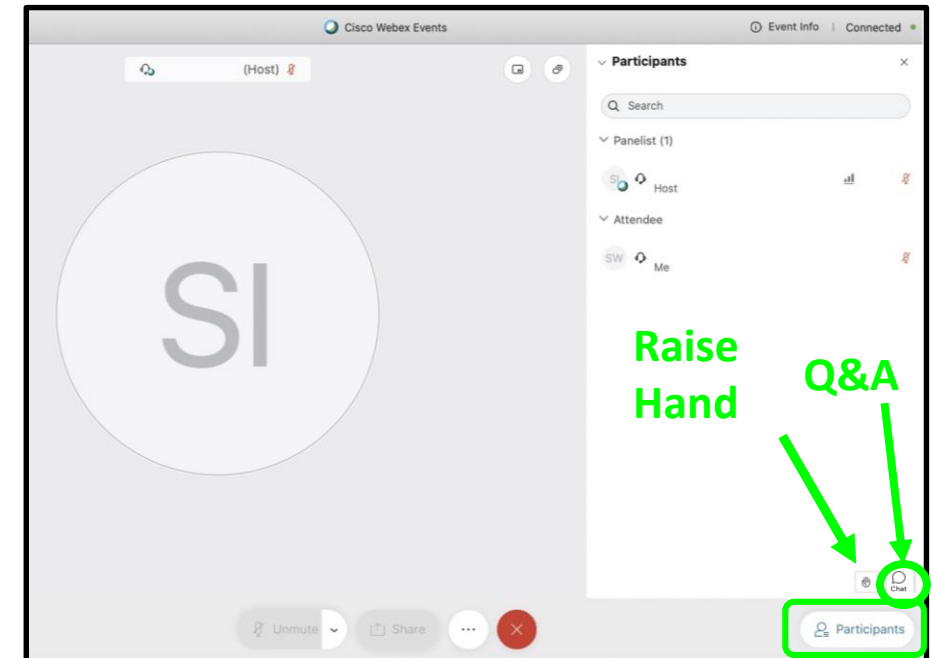
## Via the [internet browser](#)

Click the “...” button at the bottom of the video window and select “Raise Hand” or “Q&A”.



## Via the [Webex App](#)

Click the Participants button at the bottom of the video (the Participants panel will open to the right). Then click the “Raise Hand” or “Q&A” button at the bottom right.





# Participating by Smartphone or Tablet

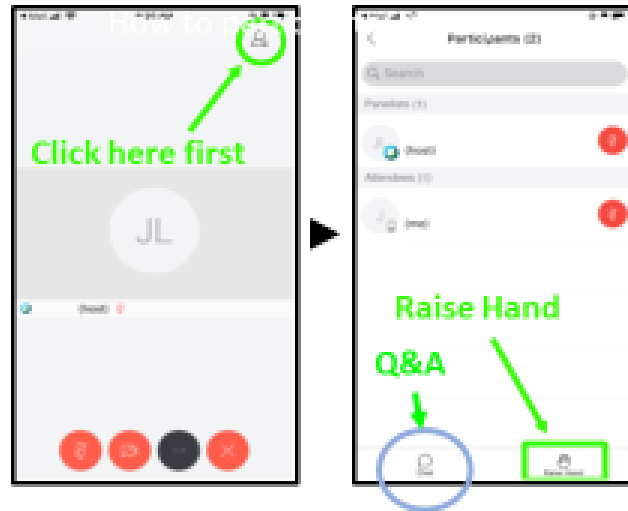


Raise your hand or type your question



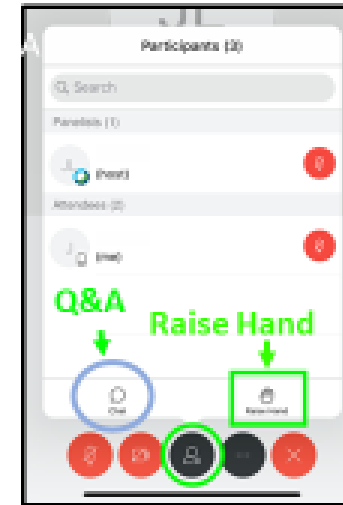
## For smartphones

Click the Participants panel button at the top right corner of the screen. Then click "Raise Hand" or "Q&A" at the bottom right of the screen.



## For tablets

Click the Participants panel button at the bottom of the screen. Then click the "Raise Hand" or "Q&A" button at the bottom right.



9



- To raise your hand virtually, **key in \*3.**
- The Host will see a hand up beside the last four digits of your phone number
- During the Q&A period, the Host will unmute you and let you know that you can speak



**Be patient:** Virtual meetings don't always run as smoothly as planned.

**Be brief:** Limit yourself to one question or comment when you are called on to speak.

**Be respectful:** The City of Toronto is an inclusive public organization. Discriminatory, prejudicial or hateful comments and questions will not be tolerated and you will be removed from the meeting.



We want to hear from you – all questions are good questions!  
Please wait until the end of the presentation to ask your questions.  
If we do not address your question, staff will follow up with you after the meeting.



## Project Team:

- Becky Katz, Transportation Services
- Jetmir Balashi, Urban Forestry
- Marfique Ahmed, Engineering and Construction Services
- Katherine Wilson, Transportation Services
- Mark De Miglio, Public Consultation Unit

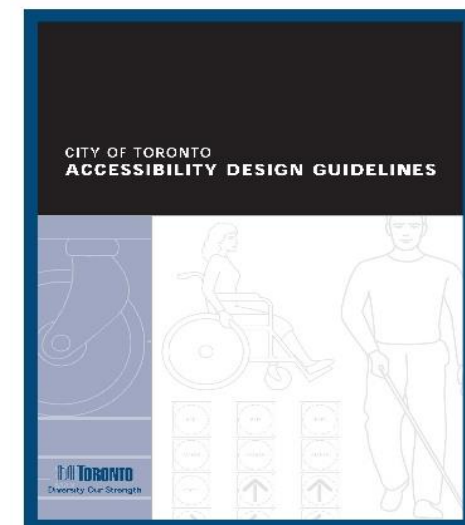
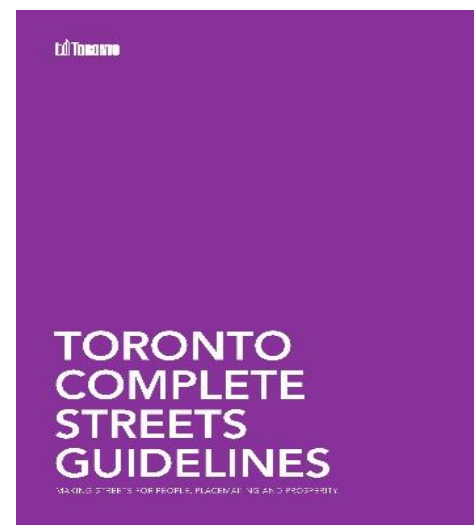
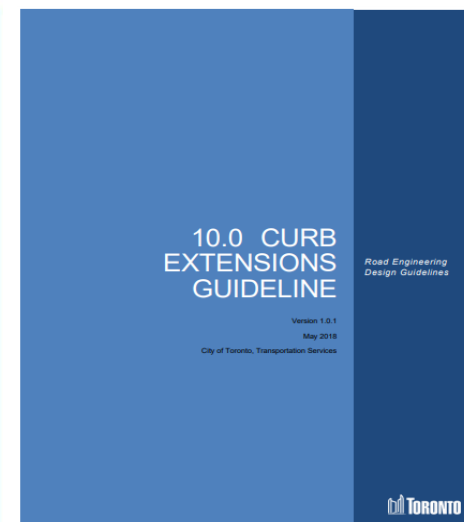
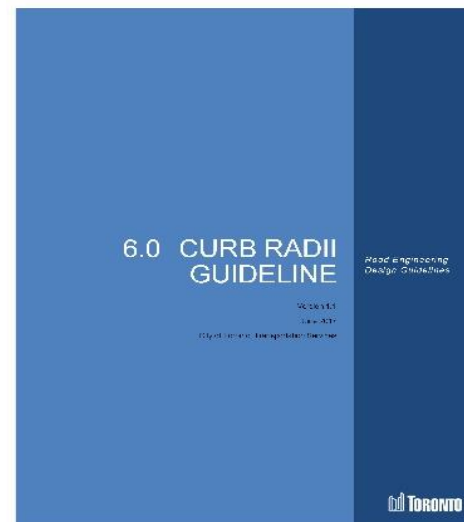
# Road Safety: Policies and Guidelines



The City has a number of policies and guidelines in place to improve the design of streets for all road users.

They focus on:

- Safety for all road users, particularly the most vulnerable
- Mobility for all ages
- Accessibility for everyone



# City Sidewalk Policies



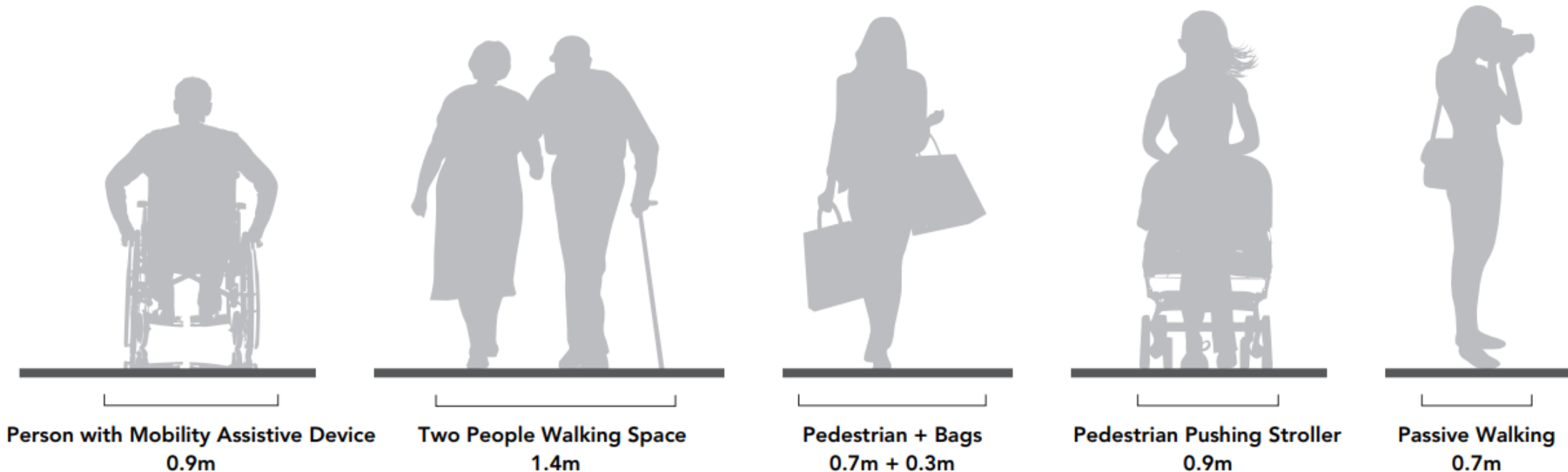
- Sidewalks are a critical piece of infrastructure and provide a safe and accessible route for people to travel in the neighbourhood.
- Transportation Services reviews opportunities to install sidewalks on all roadway classifications through bundling with other state-of-good-repair roadway or utility work, as well as stand-alone delivery.
- Sidewalks are built, where they are missing, on both sides of arterial and collector roads, and on one or both sides of local roads.



# New Sidewalks: Design Guidance



- The City of Toronto standard sidewalk width is 2.1m to accommodate two people in mobility assistive devices passing one another.
- The absolute minimum width for sidewalks for accessibility is 1.5m.

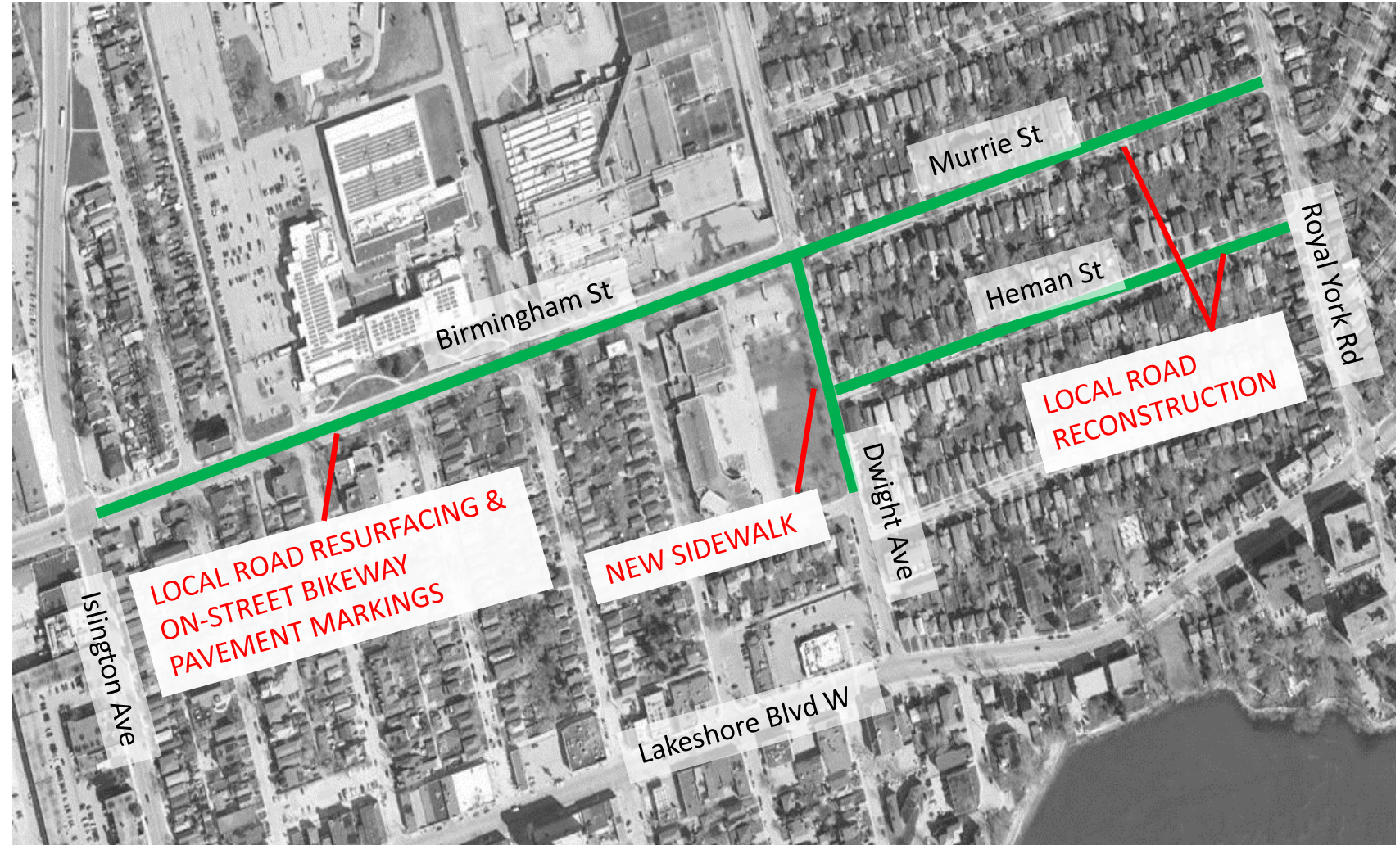


# Why Now?



The City of Toronto has coordinated several road safety improvements, road reconstruction, road resurfacing, cycling infrastructure and pedestrian improvements on several streets in your neighbourhood.

This offers the opportunity to make “complete streets” and road safety improvements.





# Existing Road Conditions



- Road classification: Collector
- Existing roadway width: 11.2 m
- Existing sidewalk on east side
- One motor vehicle lane each direction and left turning lane
- Parking prohibited
- School zone
- Daily traffic volume: 4,000 vehicles/day
- Posted speed limit: 40 km/h



# Dwight Ave | New Sidewalk on West Side



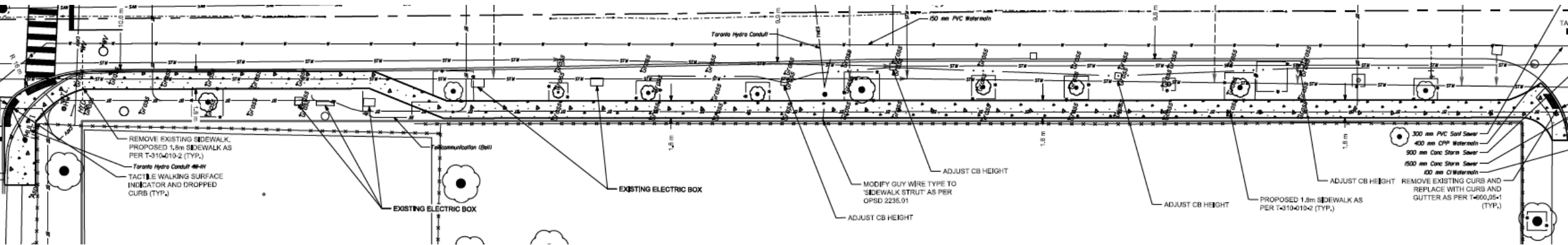
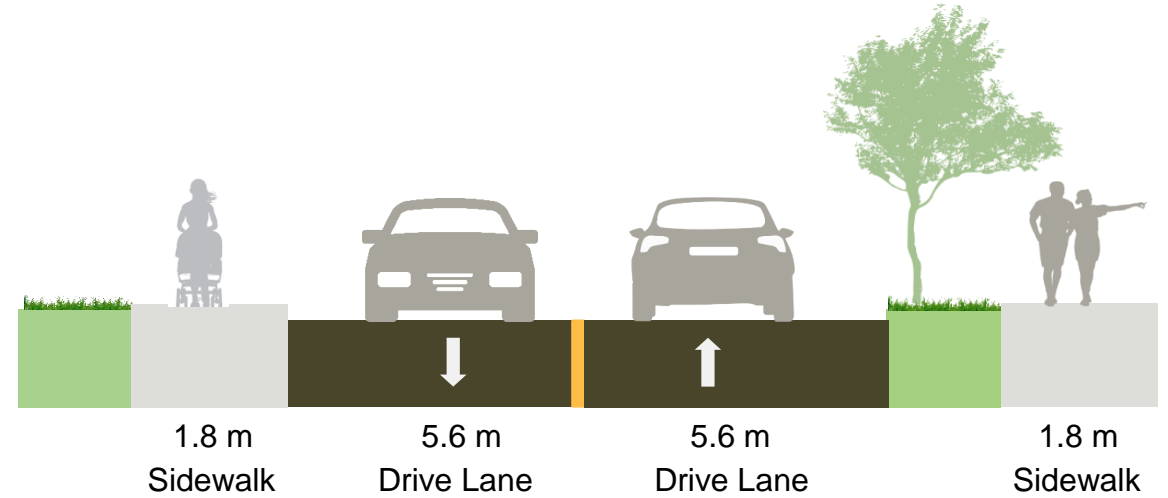
- Dwight Ave is classified as a collector road. City policy calls for sidewalks on both sides of collector roads.
- Transportation Services received request from the TDSB to install a new sidewalk on Dwight Ave between Birmingham St and Maple Blvd in 2016.
- A sidewalk request was included in Second Street Jr. Middle School Travel Plan to encourage students to walk to school.
- A sidewalk at this location would provide a safe walking environment around the school.
- Dwight Ave sidewalk was programmed for construction in 2021 based on opportunity to be bundled with construction on adjacent road works on Birmingham St, Murrie St and Herman St.



# Dwight Ave | Planned Sidewalk Design



- New 1.8m sidewalk with boulevard on west side.
- Sidewalk jogs curbside on north end to avoid conflicts with utility boxes.
- Tactical walking surface indicators and dropped curbs at all crossings.
- Provides pedestrian connection to Second Street Junior Middle School.





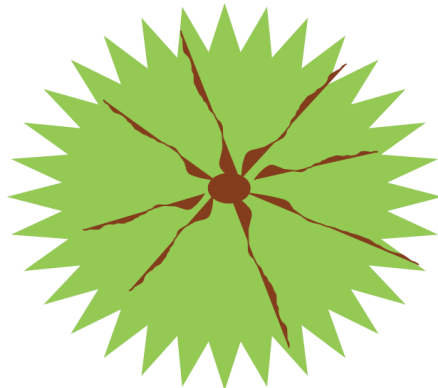
Alternative design options have been considered and further investigated on site to minimize impact on trees. However, tree removal/injury is still required in these cases. Alternative options discussed are:

- 1) Curbside sidewalk: Since the 12 trees are located in the middle of the boulevard, tree removal is still required and the design would decrease comfort level for pedestrians using sidewalk.
- 2) Reduce the width of the sidewalk to 1.5m: Given the location of the 12 trees and roots, excavation of the critical root zone is still required and the trees will require removal.
- 3) Reduced road width: Road reconstruction is not programmed in the near term and road width constraints exist based on the City's Road Engineering Design Guidelines: Lane Widths Guidelines.
- 4) Sidewalk on school property: Issues with drainage towards TDSB property, removal of fence likely to result in tree injury, and undesirable pedestrian path as sidewalk would travel through school parking lot.

# Dwight Ave | Arborist Impact Assessment



- An impact assessment was completed by comparing the extent of tree dripline and tree protection zones with the proposed disturbance limits as a result of the proposed sidewalk improvements on Dwight Ave.
- Trees recommended for removal include trees within or outside the disturbance limits that would not be able to withstand construction related impacts.
- Urban Forestry advised trees would not be able to survive sidewalk construction because most tree roots are exposed to ground.
- A total of 12 trees require removal.
- Two (2) trees were recently planted in 2019.



**Table 1 Summary of Impact Assessment.**

City of Toronto Tree Category	Removed	Injured	Retained
Category 1: Trees with a diameter of 30 cm or more on private property on the subject site.			
Category 2: Trees with a diameter of 30 cm or more on private property, within 6 metres of the study area.			2
Category 3: Trees of all diameters on City owned parkland.			
Category 4: Trees of all diameters within the Ravine and Natural Feature Protection Limit.			
Category 5: Trees of all diameters within the City road allowance, adjacent to the study area.	12		4
Trees 30 cm DBH or less on private property*			5
Shared Boundary Trees			
Dead tree*			
<b>Total</b>	<b>12</b>		<b>11</b>

# Dwight Ave | European Ash Trees



Three (3) of the existing trees are European Ash Trees (black squares).

- Currently no species of Ash can be planted on City owned property. Ash tree plantings have been suspended due to the Emerald Ash Borer (EAB) forest pest.
- EAB is an introduced forest pest that will kill all ash trees in Toronto unless they are treated with a pesticide effective against EAB on a repeated basis.
- Urban Forestry is currently treating these trees against Emerald Ash Borer.
- It is likely the ash trees will require removal in the next 5 -10 years to ensure public safety.

# Dwight Ave | Norway Maple Trees



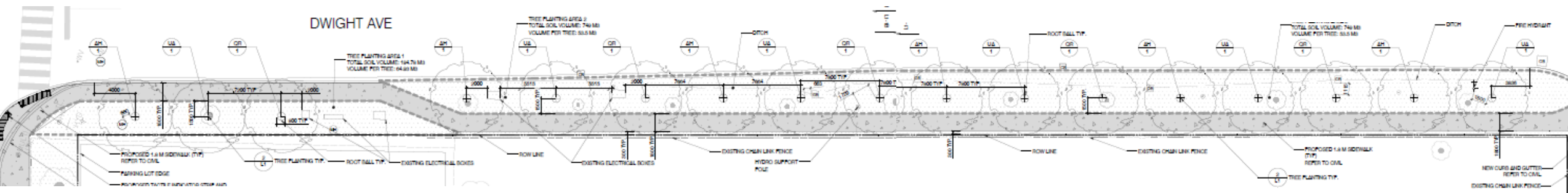
Seven (7) of the existing trees are Norway Maple Trees (white squares).

- Currently, the City of Toronto is removing Norway Maples from ravines throughout the City.
- They are considered an invasive and damaging species in ravines as well as on streets and courtyards.
- Norway Maples are surfacing rooting trees, as they age their limbs and branches become weak. This weak wooded characteristic is then prone to splitting and falling during wind storms.
- Norway Maples are prone to verticillium wilt, anthracnose and leaf scorch development on the foliage which makes the overall appearance of the tree quite unsightly by mid-summer.

# Dwight Ave | Tree Replanting Plan



- 17 trees are to be replanted to continue growing Toronto's tree canopy.
- Since ecosystems are dependent on environmental conditions such as moisture and light, the species below represents trees expected to adapted well in the community.
- Proposed tree types include:
  - 6 Common Horse-Chestnut Trees (spring interest)
  - 5 Red Oak Trees (native, fall interest)
  - 6 Valley Forge Elm Trees (fall interest)







We are also interested in hearing from you on tree canopy gaps in your community:

- Are there locations in your community you wish to see more trees planted?
- Are there specific tree types not mentioned that you would like to see planted?



# Recommendation and Next Steps



- This sidewalk provides an essential missing link in the sidewalk network and is directly adjacent to a school. For safety and accessibility Transportation Services and Engineering and Construction Services recommend proceeding with **tree removal and sidewalk installation based on current design.**
- Continue receiving feedback from community and when possible integrate suggestions into design.
- Continue working with Urban Forestry to finalize replanting plan in the area, to enhance tree canopy in the area as part of new sidewalk installation.
- Construction of new sidewalk on west side of Dwight Avenue to proceed as scheduled in fall of 2021.

# Questions & Answer Period

## How to Participate

- **By Phone** - To raise or lower your hand virtually, **key in \*3**.
- **By Computer** - Click the Participants button at the bottom of the video (the Participants panel will open to the right). Then click the “Raise Hand” or “Q&A” button at the bottom right.
- **For smartphones** - Click the Participants panel button at the top right corner of the screen. Then click “Raise Hand” or “Q&A” at the bottom right of the screen.



## CONTACT US

If you have any questions or concerns feel free to contact:

**Katherine Wilson, Project Lead, Cycling and Pedestrian  
Projects  
416-392-0828**