

# Picture Mount Dennis

August 18, 2021 | Indigenous Youth Engagement



# Study Area Boundary

Mount Dennis  
Planning  
Framework Study  
Boundary

Community  
Services &  
Facilities  
Boundary

Denison Rd E  
Trethewey Dr  
Emmett Ave  
Black Creek Dr  
Eglinton Ave W  
Scarlett Rd  
Lambton Ave  
Jane St  
Weston Rd  
Alliance Ave  
Humber Blvd N



# Context Area





# Schedule

## PHASE 1: BACKGROUND REVIEW

OCTOBER 2020 - FEBRUARY 2021

- » Understand the existing characteristics of the neighbourhood
- » Introduce the project to the community and establish engagement groups
- » Prepared Preliminary Background Report

- Community Meeting #1
- Social Pinpoint
- Library Survey
- Human Services Focus Group

WE ARE HERE



## PHASE 2: TESTING

MARCH 2021 - JUNE 2021

- » Develop concrete plans and strategies to support the community's vision
- » Develop and test alternative design concepts

- Community Meeting #2 & #3
- Heritage Focus Group #1 & #2
- Local Advisory Committee #1 & #2
- Indigenous Engagement #1
- NIA Planning Table #1 & #2

## PHASE 3: EMERGING FRAMEWORK

JULY 2021 - SEPTEMBER 2021

- » Prepare a final report with a recommended framework, plans and strategies

- Community Meeting #4
- Local Advisory Committee #3
- Indigenous Engagement #2



# Themes:



**Land Use & Urban Design**



**Servicing / Water**



**Cultural Heritage**



**Mobility /  
Transportation**

# Lenses:

**Sustainability and Resilience**

**Equity and Social Development**

**Public Health**

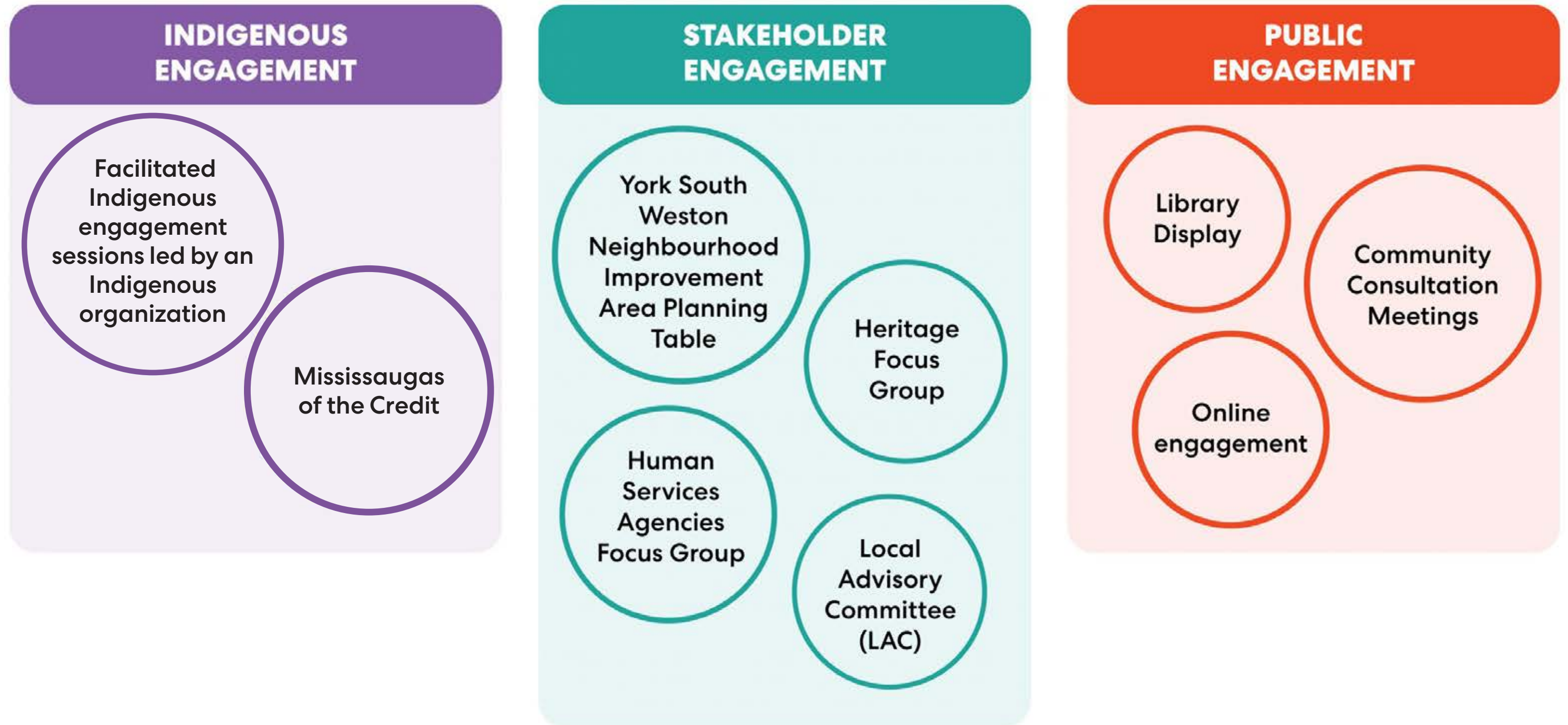


# What might come out of this study





# Engagement Streams





# What we heard...

Indigenous voices represent a living history and need to be consulted to address gaps in archaeological perspectives and conventional western narratives.

Ensuring ongoing housing and commercial space affordability is the number one priority

Maximize the transit investment to get healthy density and a diverse housing supply

Cycling in Mount Dennis is dangerous!

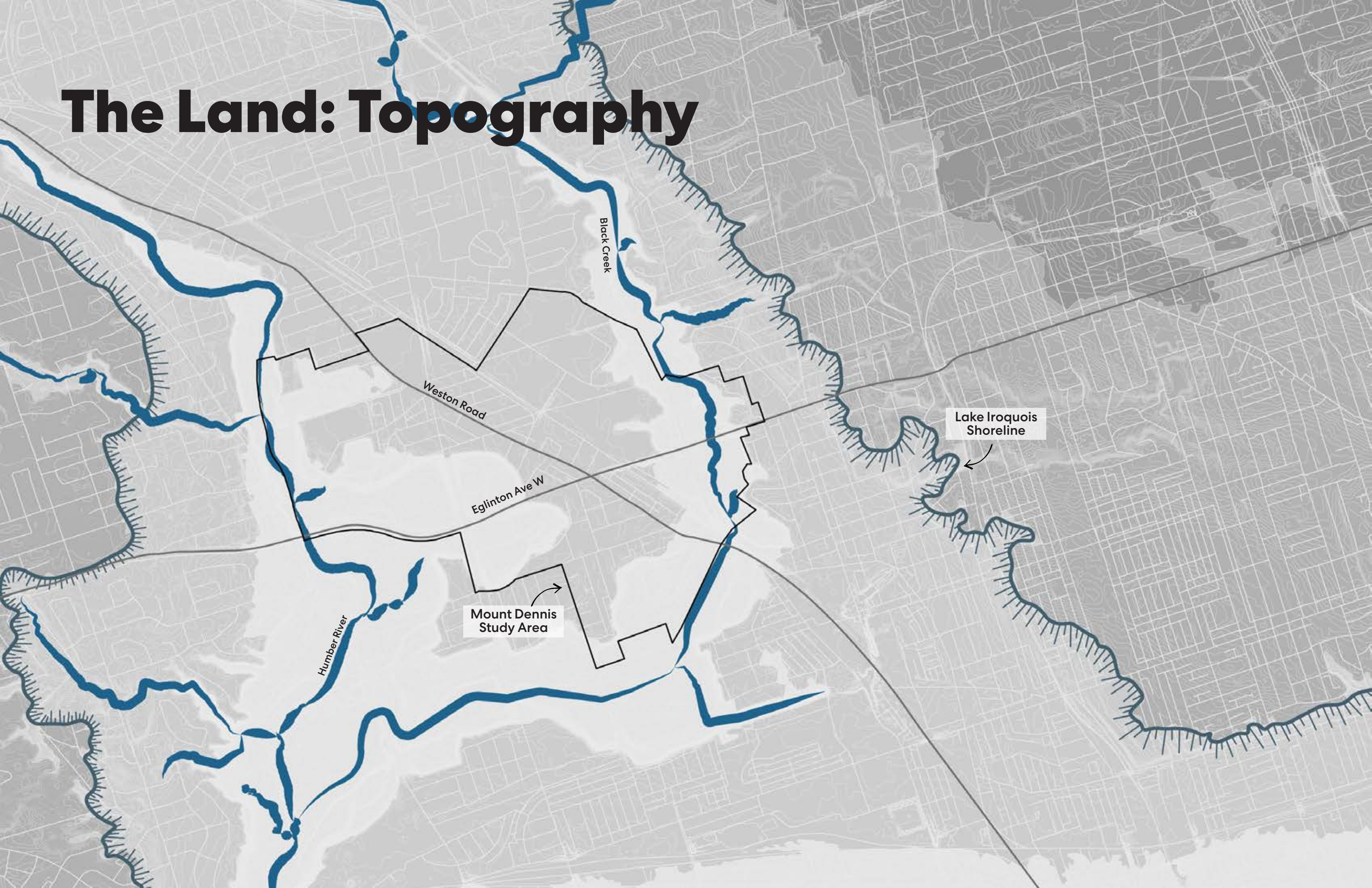
Greenspace needs to be more accessible



# About Mount Dennis



# The Land: Topography







**The Humber River was an important Indigenous route, alongside the Toronto Carrying-Place Trail. This pathway was an important travelling spine, leading into the upper Great Lakes network. It contributes a significant piece of history – travel and trade – that has shaped Mount Dennis to be the neighbourhood it is today.**



**The modern community of Mount  
Dennis took shape through the  
connections provided by the Humber  
River corridor, Weston Road and the  
Grand Trunk Railway.**



**Today, major investment in public transit, converging at the new Mount Dennis station, is poised to transform the area.**







MAXIMUM  
**60**  
BEGINS



Welcome To Mount Dennis



Emanuel Ciobanica  
2014  
Sally Gregory  
Zachary  
Anna Maria  
Doree Petts  
Bravo



# Languages and Immigration

Most popular Mother Tongue  
**Portuguese, Spanish,  
and Vietnamese**

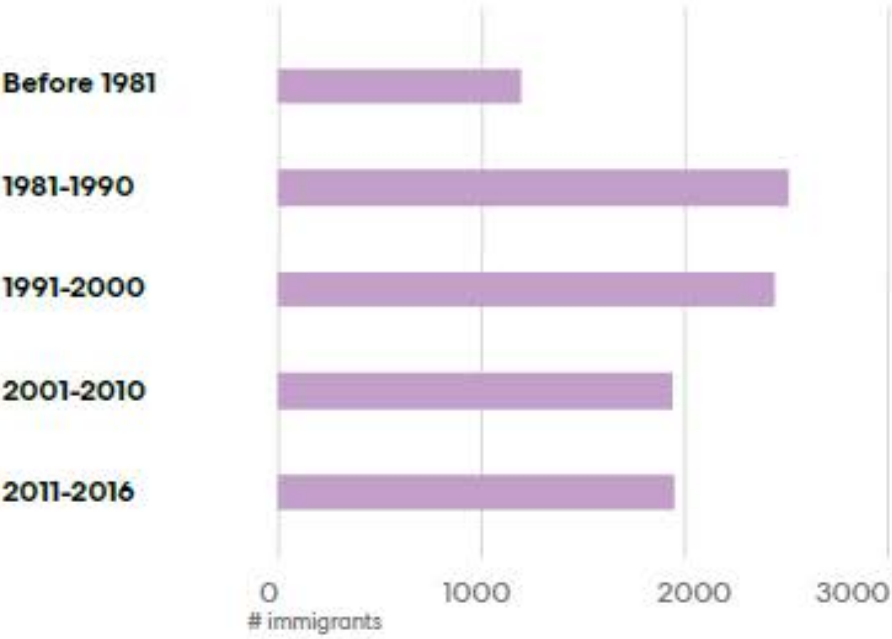
Non Canadian Citizens  
**14%**

Immigrants  
**57%**

## Birth Country of Immigrant Population



## Immigration Period

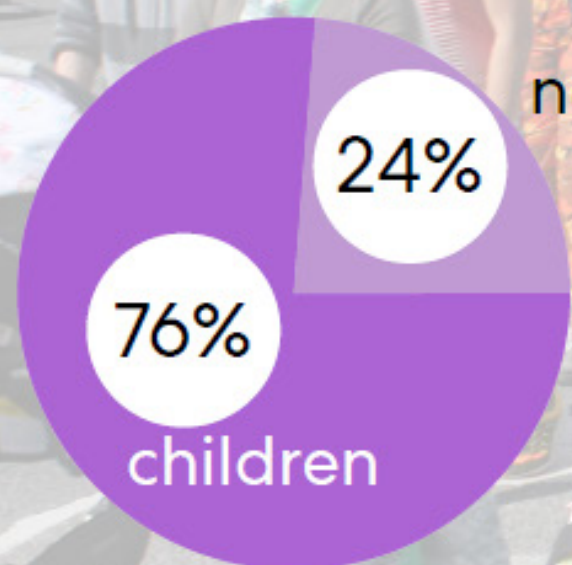


\*statistics based on the Framework Study boundary

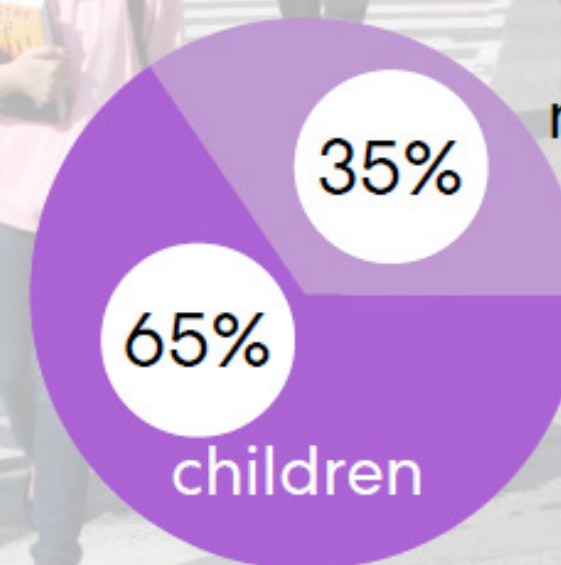


# Households

**MT DENNIS**



**CITY OF TORONTO**

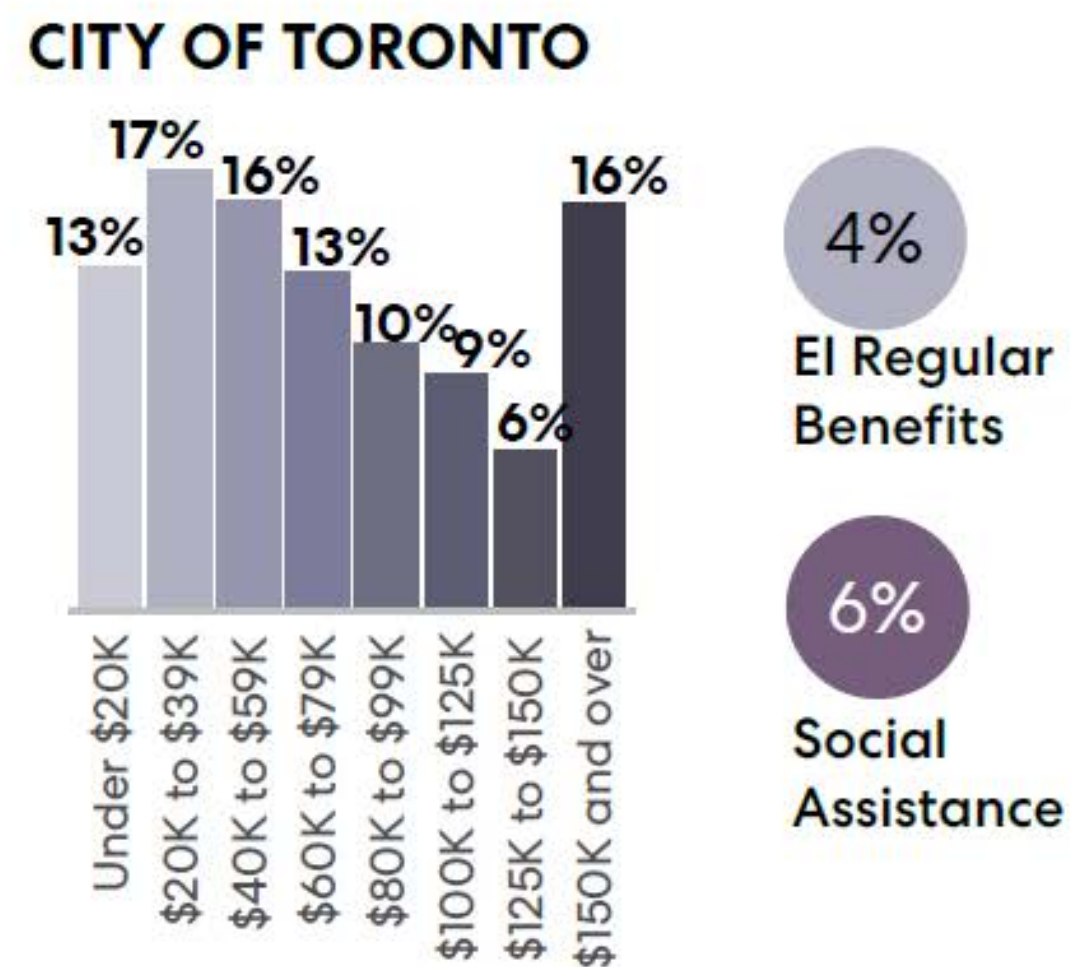
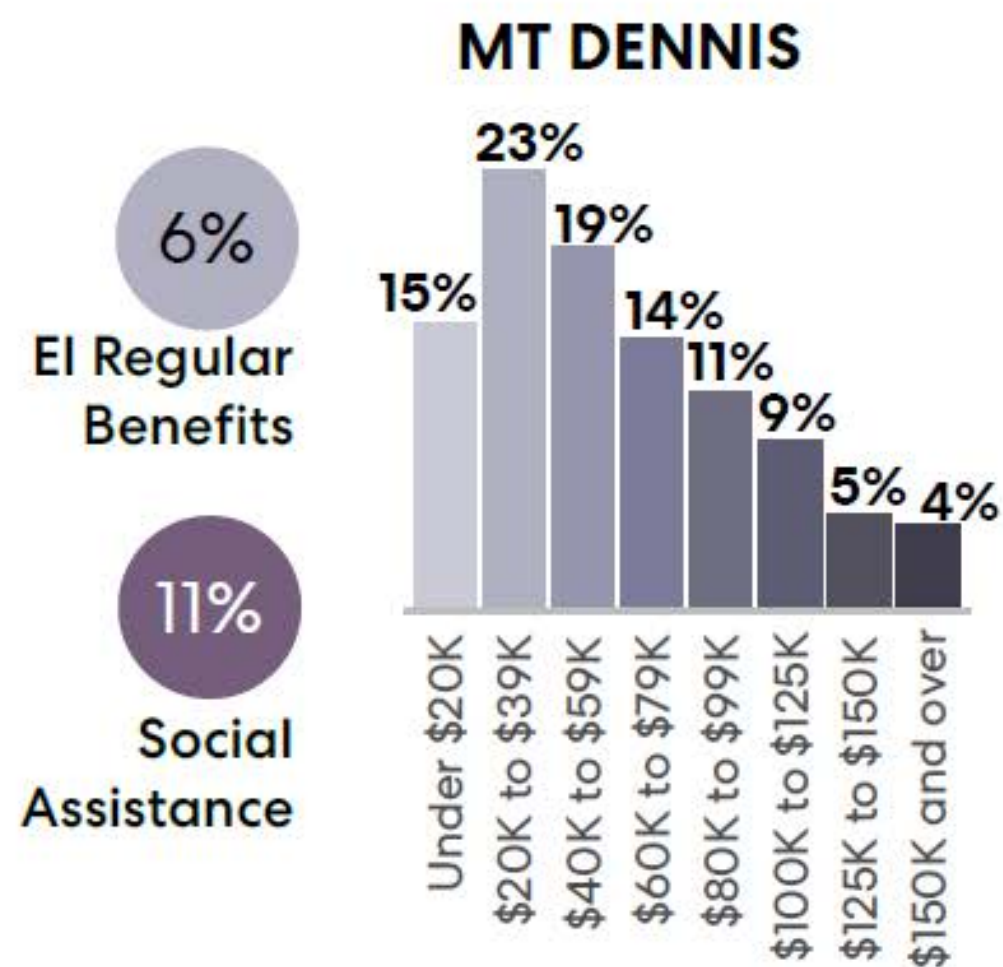


\*statistics based on the Framework Study boundary



# Income

## Estimated Median Income



\*statistics based on the Framework Study boundary



# Character Areas



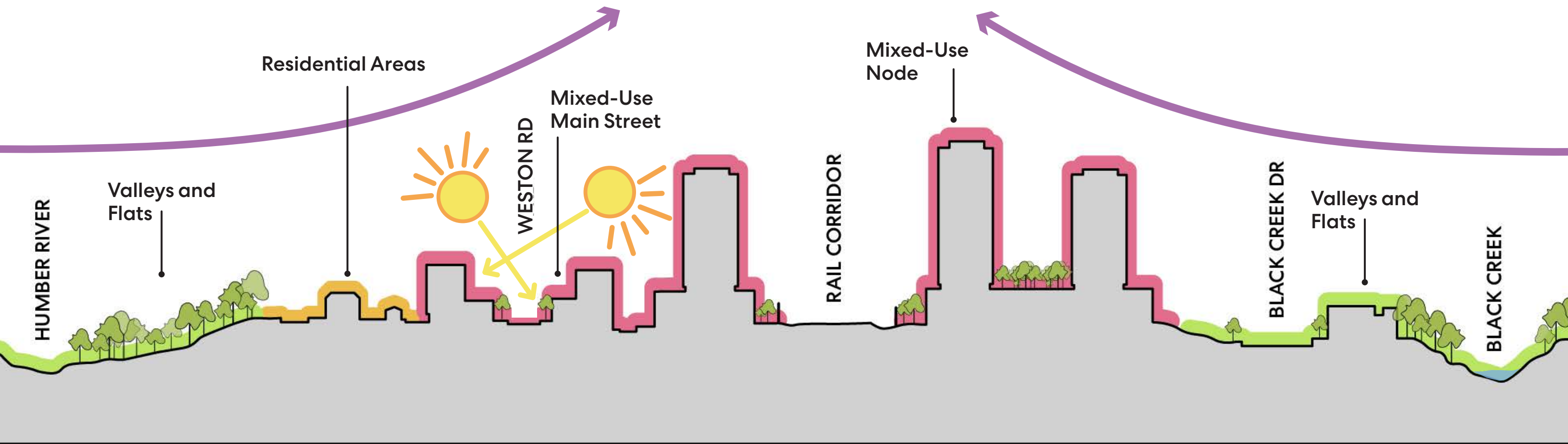
# Character Areas





# Character Areas

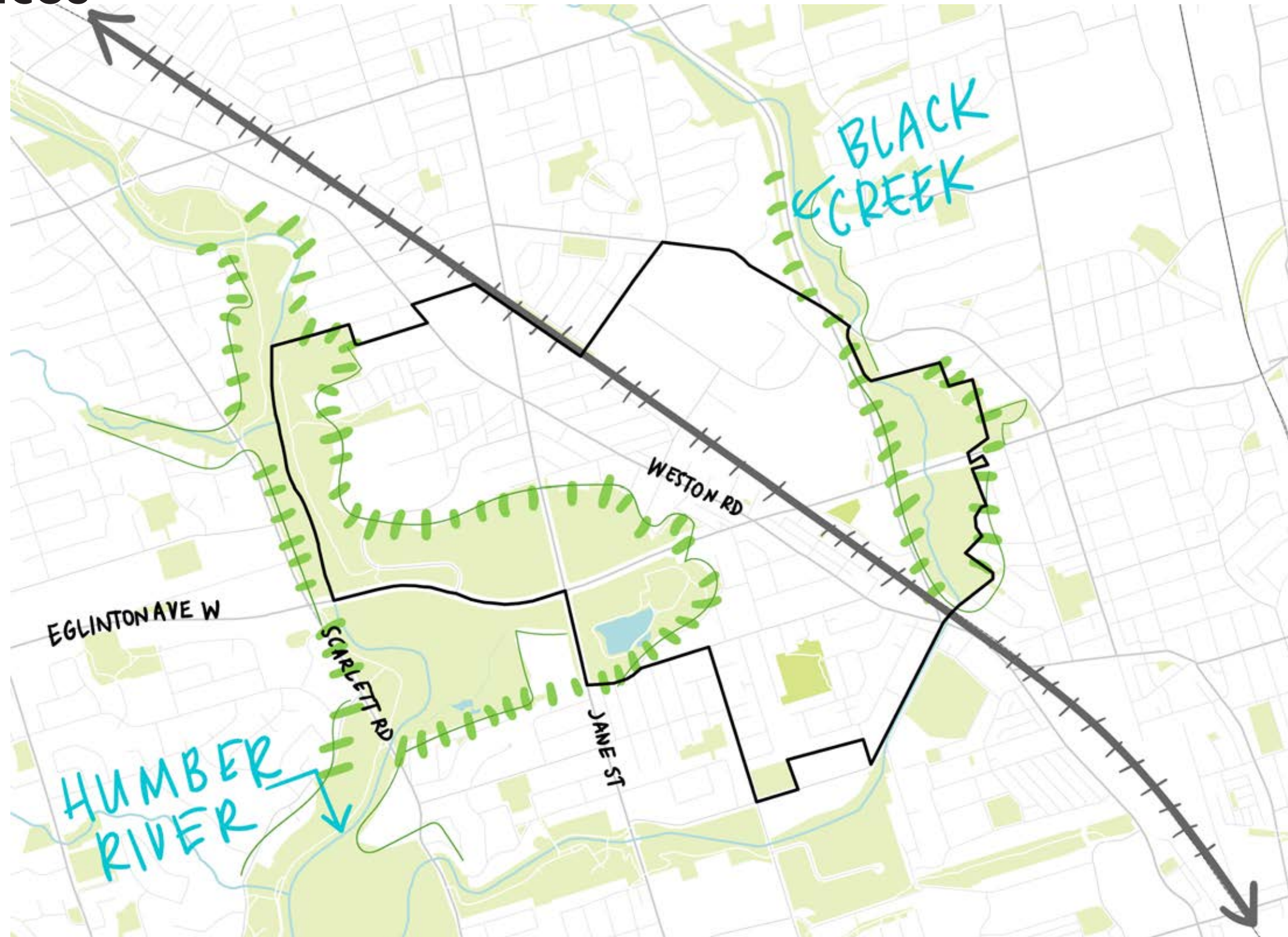
## Vision





# Emerging Character Areas

## Open Spaces





# Emerging Character Areas

## Open Spaces- Existing Conditions



**The Eglinton Flats**



**Ravines**



**Playgrounds**



# Emerging Character Areas

Open Spaces - Potential for change



**Better access to  
open spaces**



**Leisure spaces**



**Spaces for families**



# Emerging Character Areas

## Residential Areas





# Emerging Character Areas

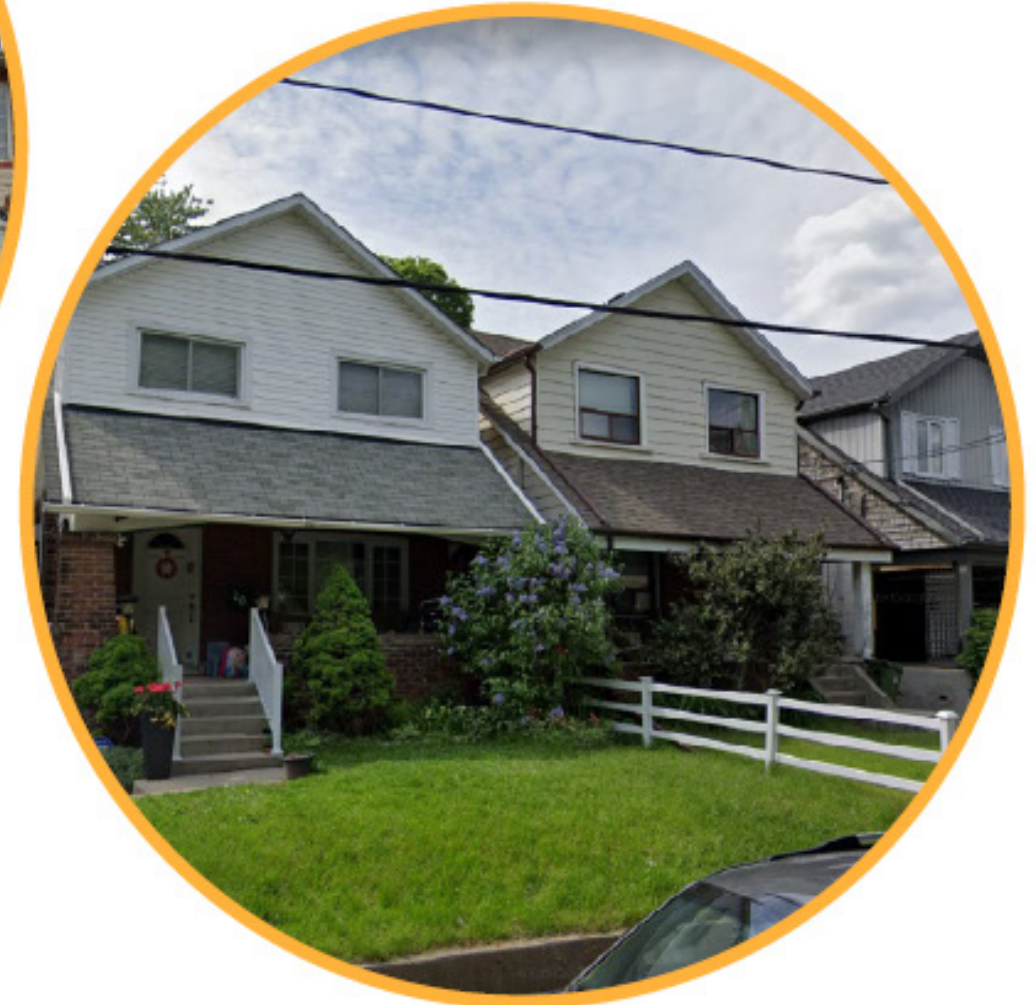
## Residential Areas- Existing Conditions



**High rise  
apartments**



**Townhouses**



**Detached housing**



# Emerging Character Areas

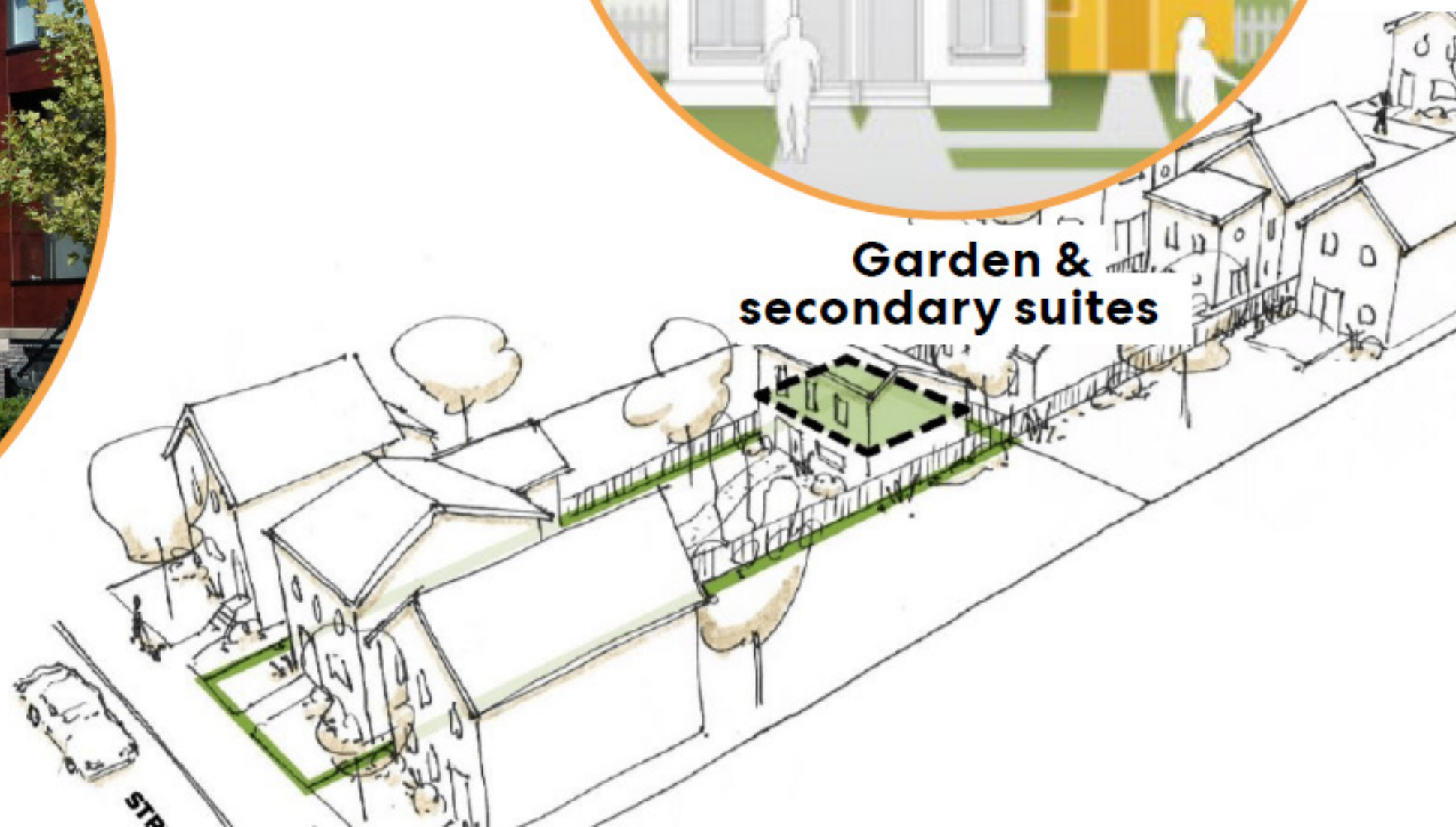
Residential Areas - Potential for change



**Infill housing**



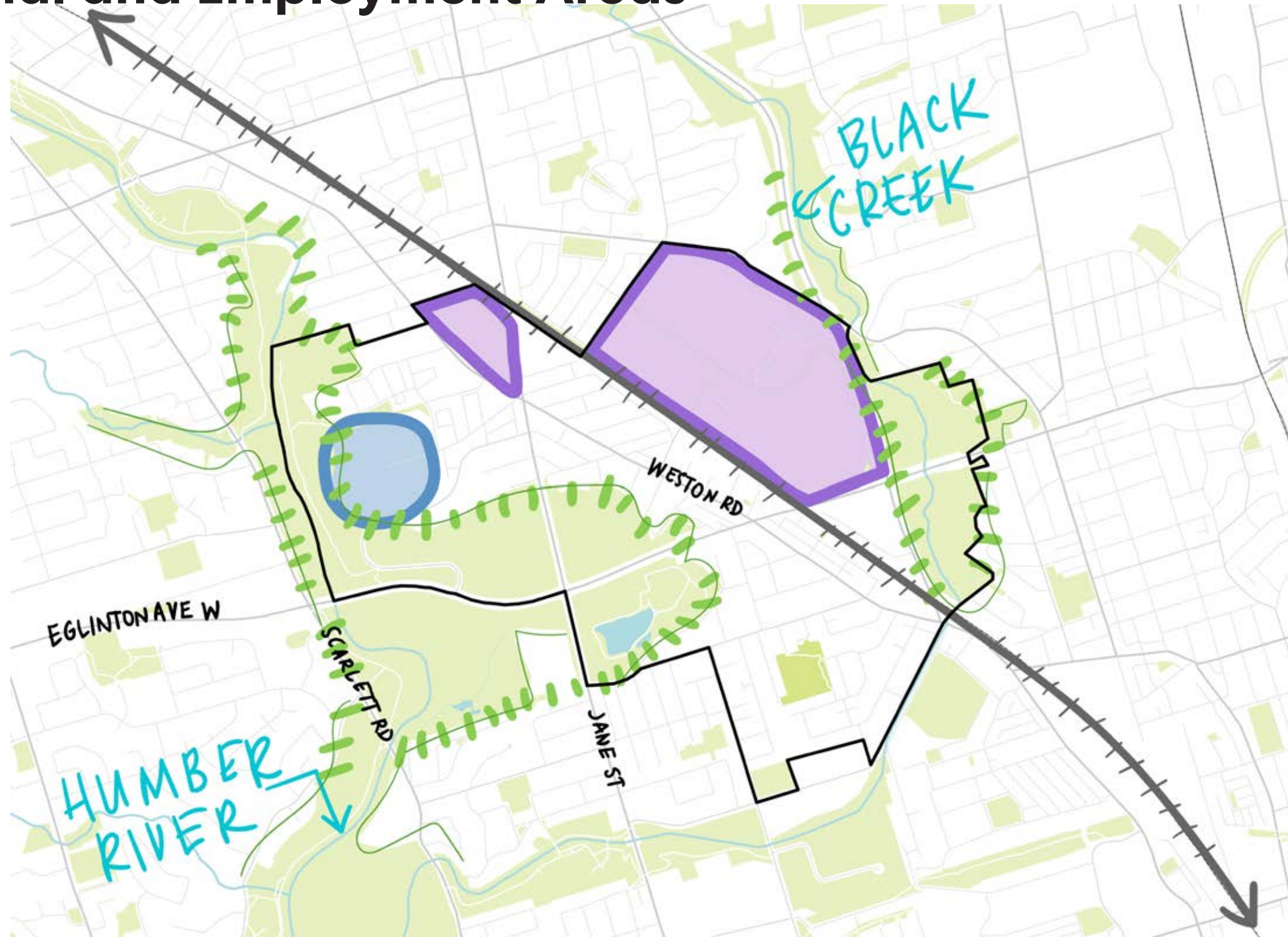
**Garden & secondary suites**





# Emerging Character Areas

## Institutional and Employment Areas





# Emerging Character Areas

## Institutional and Employment Areas- Existing Conditions



**West Park Health  
Care Centre**



**Irving Tissue**



**Industry  
Street**



# Emerging Character Areas

Institutional and Employment Areas- Potential for change



**Supporting  
employment growth**



**Better accessibility  
from Mount Dennis  
Station**

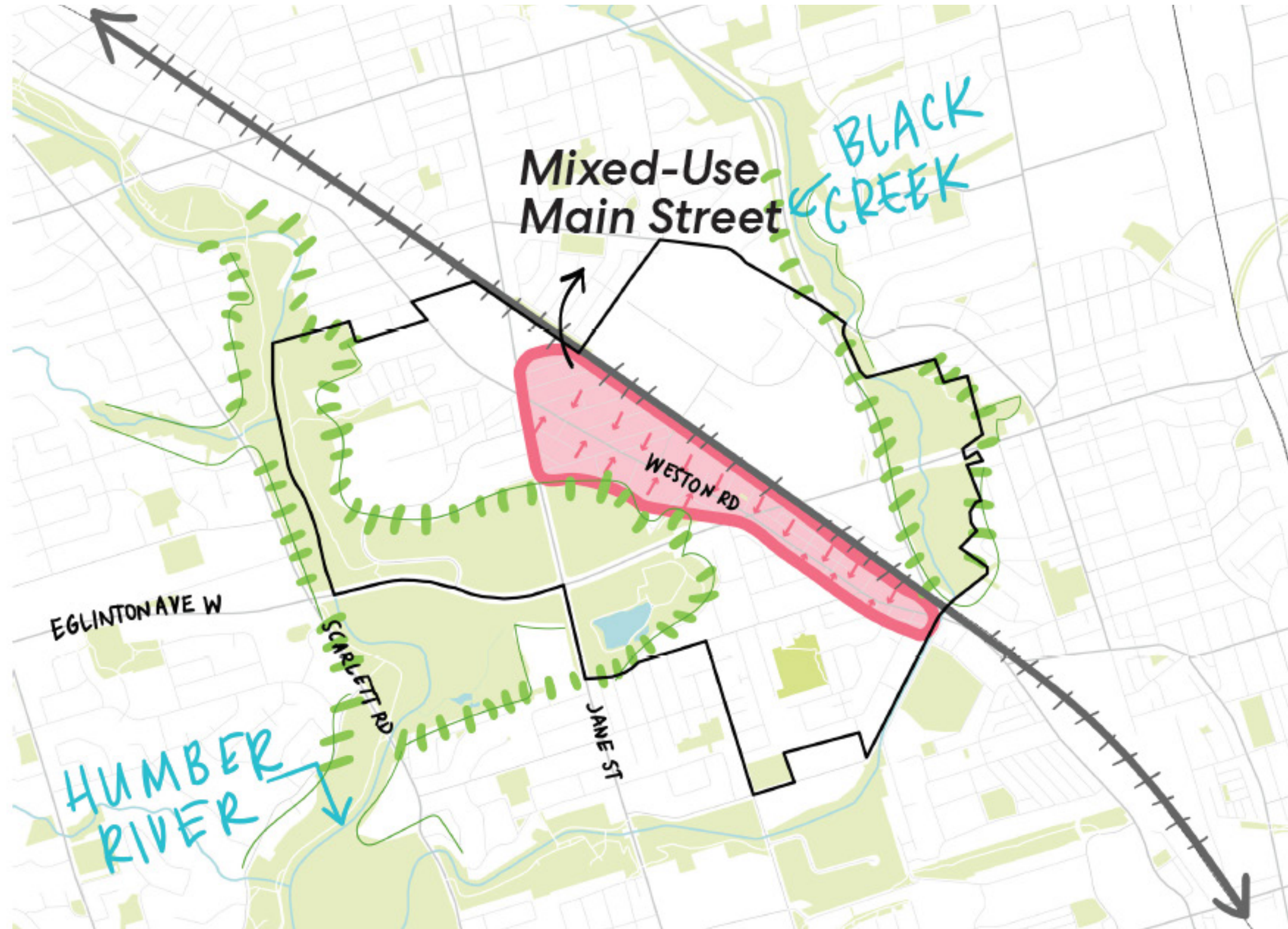


**Improving  
streetscapes**



# Emerging Character Areas

## Mixed Use Main Street





# Emerging Character Areas

## Mixed Use Main Street- Existing Conditions



**Fine grained retail**



**Independant local businesses**

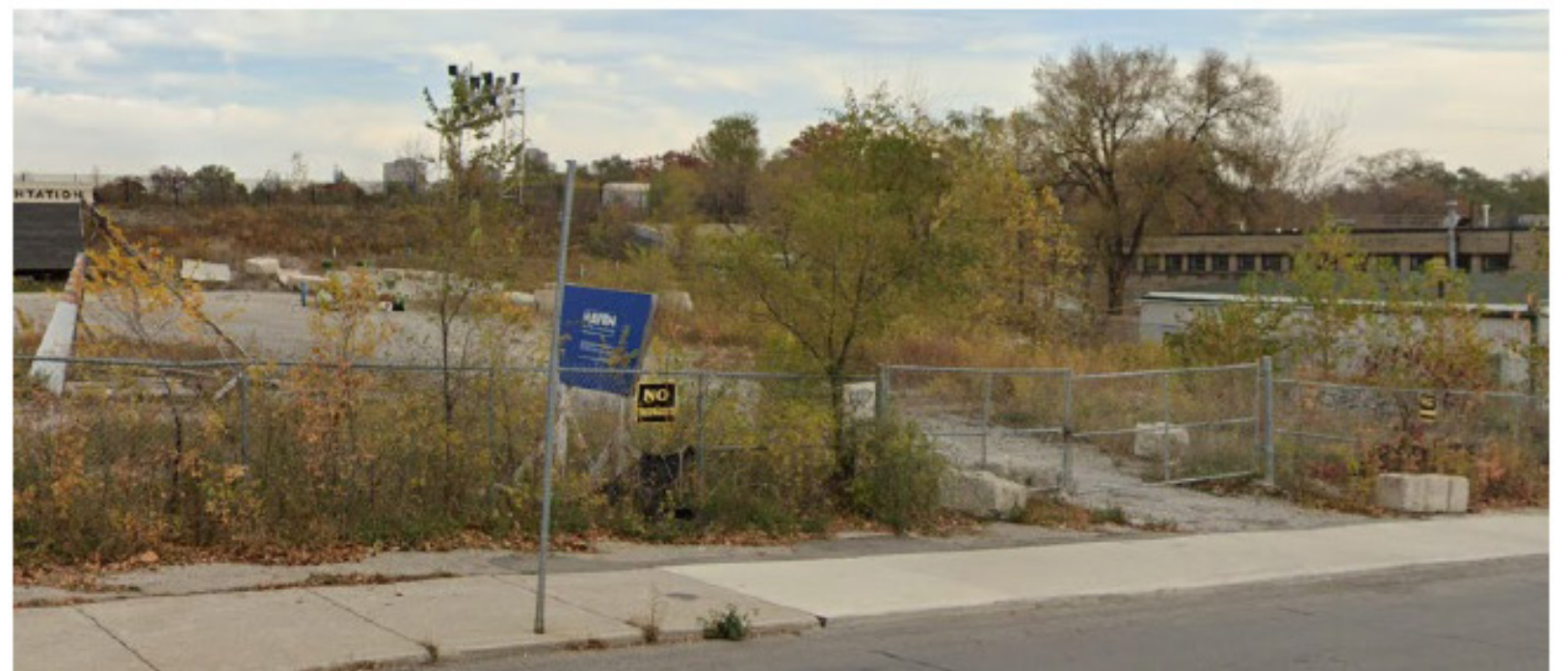


**Institutions and community services**



# Emerging Character Areas

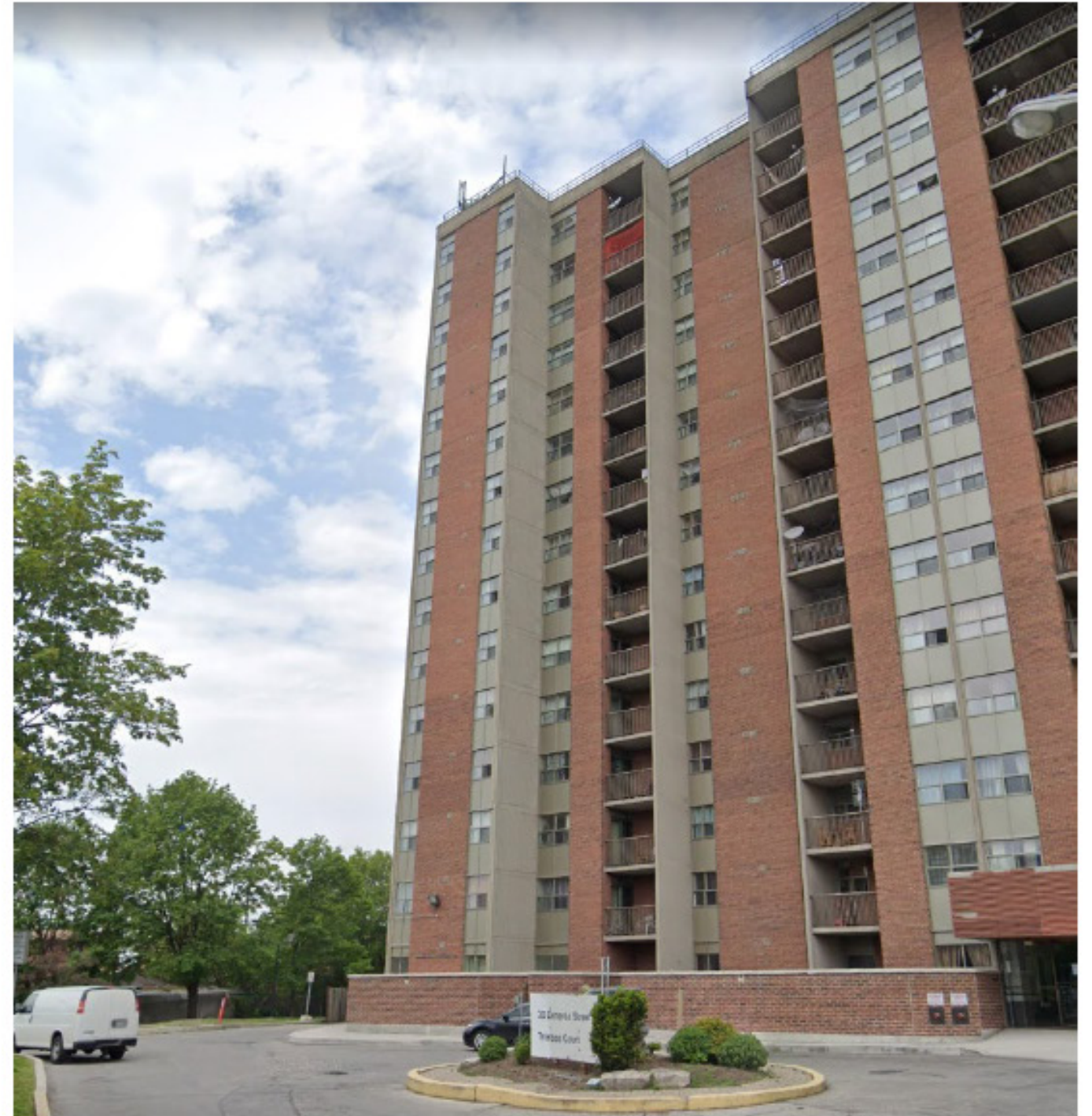
## Mixed Use Main Street- Existing Conditions





# Emerging Character Areas

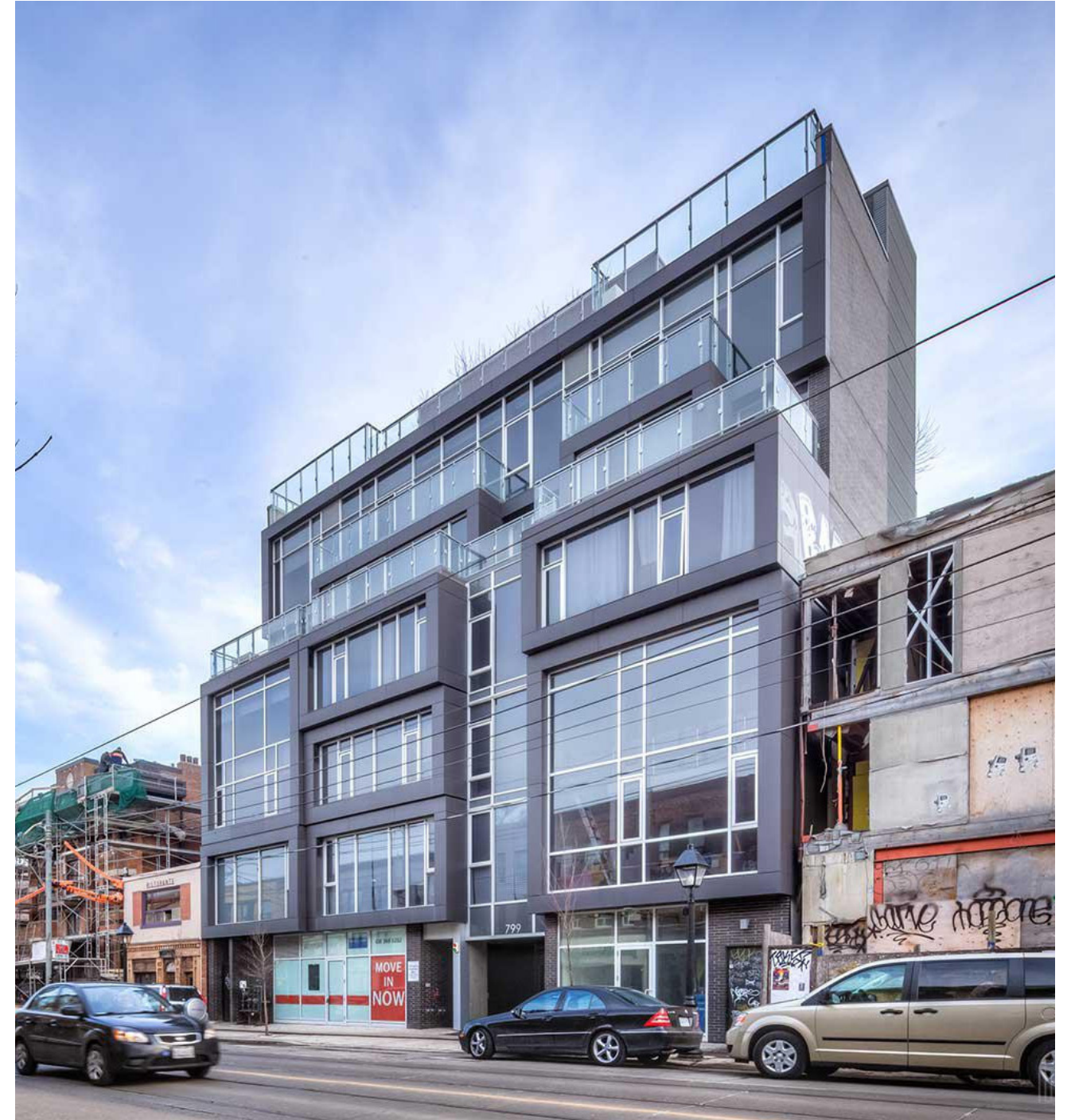
## Mixed Use Main Street- Existing Conditions





# Mixed-Use Main Street

## Mixed Use Main Street - Potential for change





# Mixed-Use Main Street

## Mixed Use Main Street - Potential for change

Commercial Overbuild



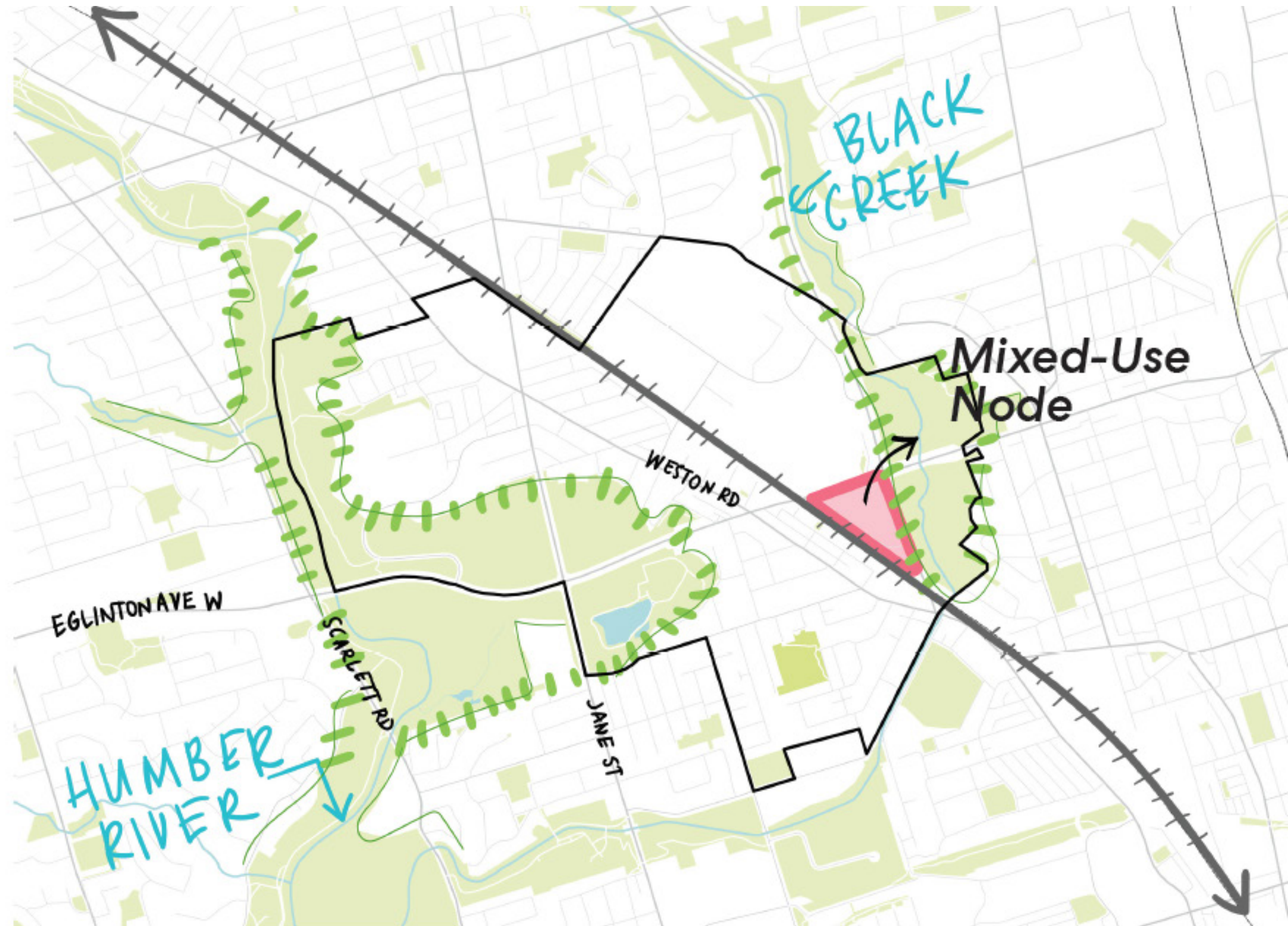
Tapestry, Toronto





# Emerging Character Areas

## Mixed Use Node





# Emerging Character Areas

## Mixed Use Node- Existing Conditions





# Emerging Character Areas

## Mixed Use Node- Potential for change





# Weston Road Transformation

## Existing Conditions





# Weston Road Transformation



**GREEN  
STREETS**

**PATIO SPACE**

**PRIORITY BUS LANE/  
SIGNAL PRIORITIZATION**

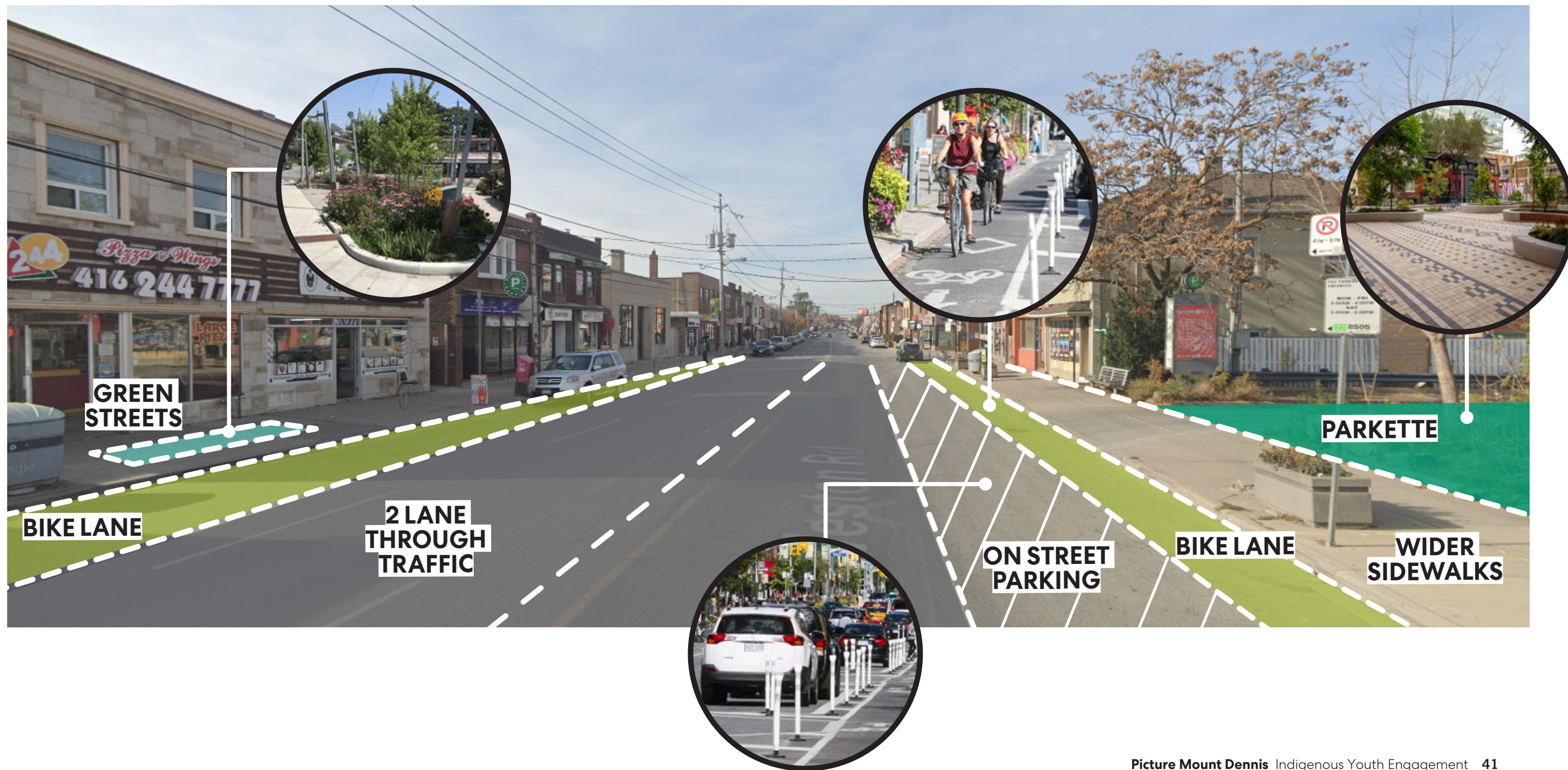
**ON STREET  
PARKING**

**BIKE LANE**

**PARKETTE**



# Weston Road Transformation



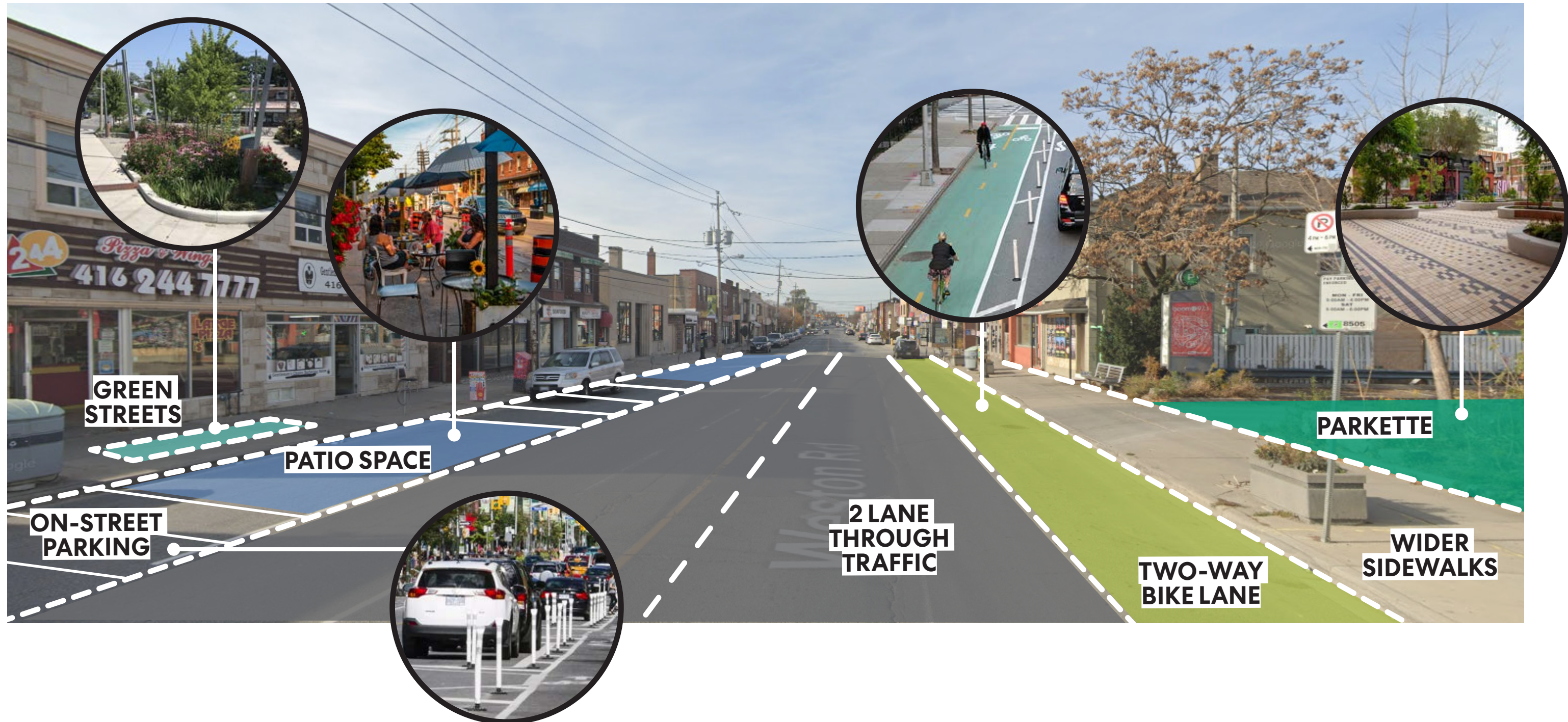


# Weston Road Transformation





# Weston Road Transformation





# Next Steps



# Next Steps Indigenous Engagement

- **Summary of input from Indigenous engagement**
- **Incorporate input and draft Picture Mount Dennis Planning Framework (August/September)**
- **Community Consultation Meeting #4 (October)**
- **Final Picture Mount Dennis Planning Framework (November)**
- **City of Toronto approves the plan and looks at how to implement it**
- **Parts of the plan get implemented over the short to long term**



# Stay in touch!

**Rory McNeil**  
Planner, Community Planning

2 Civic Centre Court, 3rd Floor  
Etobicoke, ON  
M9C 5A3  
Ph: (416) 394-5683  
Email: [Rory.McNeil@toronto.ca](mailto:Rory.McNeil@toronto.ca)

**Vanessa Covello**  
Senior Planner, Community Planning

2 Civic Centre Court, 3rd Floor  
Etobicoke, ON  
M9C 5A3  
Ph: (416) 394-8220  
Email: [Vanessa.Covello@toronto.ca](mailto:Vanessa.Covello@toronto.ca)