



Port Union Road Widening Project Update Meeting

Land Acknowledgement

To commence this meeting we would like to first take a moment to acknowledge the land on which we are meeting. This land is the traditional territory of many nations including the Mississaugas of the Credit, the Anishnabeg, the Chippewa, the Haudenosaunee and the Wendat peoples and is now home to many diverse Indigenous, Inuit and Métis peoples. We also acknowledge that Toronto is covered by Treaty 13 with the Mississaugas of the Credit.



This meeting is being recorded

Tonight's Agenda

- 6:30 p.m. Welcome & Introductions
- 6:40 p.m. Presentation
- 7:10 p.m. Next Steps and Questions
- 8:00 p.m. Adjourn

Opening Remarks

Councillor Jennifer McKelvie
Scarborough-Rouge Park
City of Toronto

Project Team

Steven Ziegler - Public Consultation Unit

Jacquelyn Hayward – Transportation Services

Cassidy Ritz – Transportation Services

Casey Morris – Transportation Services

Stanley Yue – Engineering & Construction Services

Code of Conduct

- **Be patient:** Virtual meetings don't always run as smoothly as planned.
- **Be brief:** Limit yourself to one question or comment when you are called on to speak.
- **Be respectful:** The City of Toronto is an inclusive public organization. Discriminatory, prejudicial or hateful comments and questions will not be tolerated and you will be removed from the meeting.



We want to hear from you – all questions are good questions!

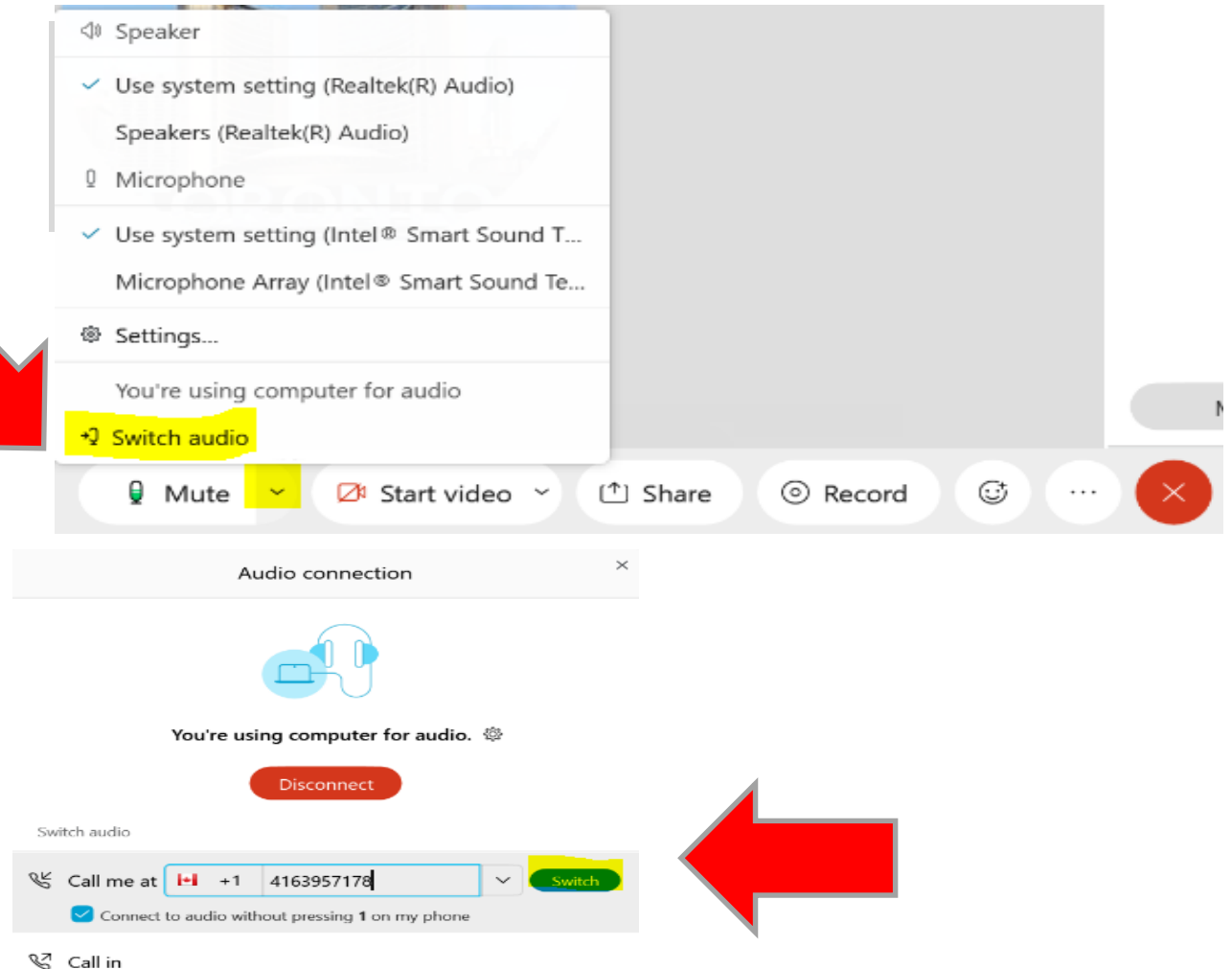
Please wait until the end of the presentation to ask your questions.

If we do not address your question, staff will follow up with you after the meeting.

Webex Audio Trouble?

Webex can call you!

1. Click **the arrow** beside your mute button
2. Click **“Switch audio”**
3. Use **“Call me”** function
 - Enter your phone #
 - Webex will call your phone
 - No long distance charges



Audio still not working?

Call Into the Meeting

Dial: **416-915-6530**

When prompted for a meeting number
enter: **2467 825 4058**

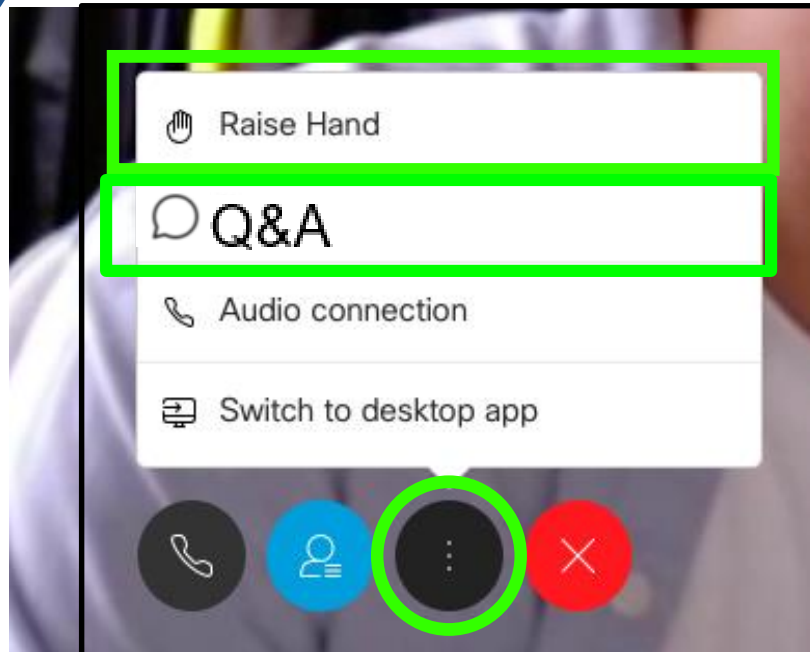
Participating by Computer

Raise your
hand or
type your
question



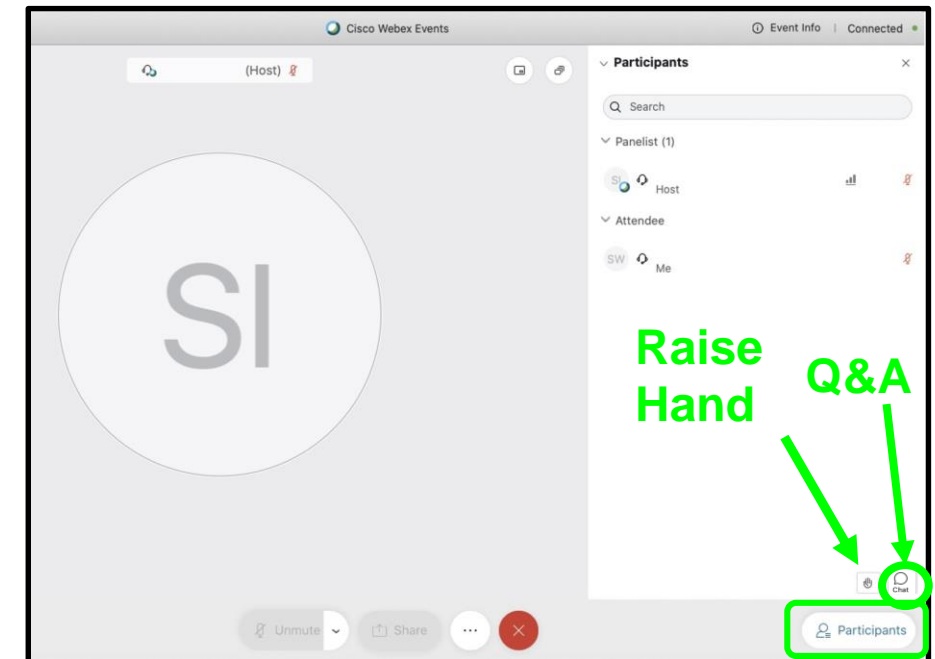
Via the internet browser

Click the “...” button at the bottom of the video window and select “Raise Hand” or “Q&A”.



Via the Webex App

Click the Participants button at the bottom of the video (the Participants panel will open to the right). Then click the “Raise Hand” or “Q&A” button at the bottom right.

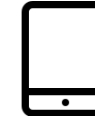
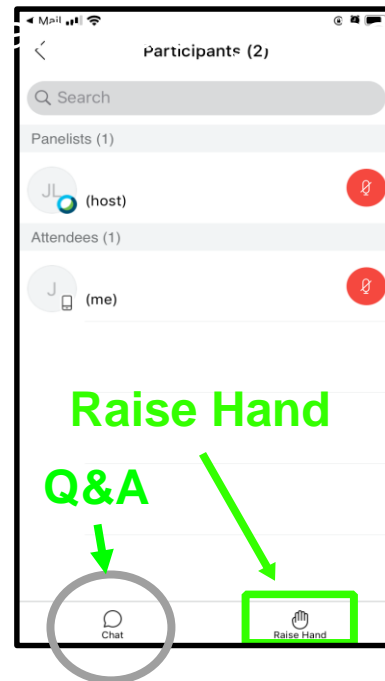
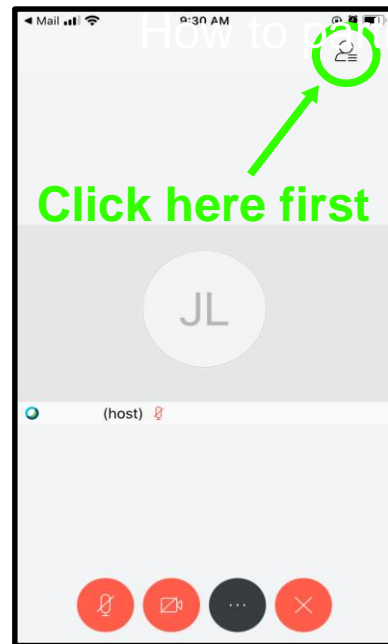


Participating by Smartphone or Tablet



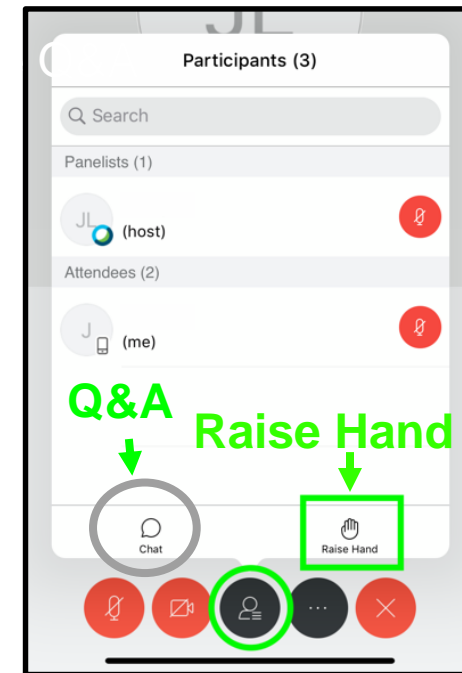
For smartphones

Click the Participants panel button at the top right corner of the screen. Then click “Raise Hand” or “Q&A” at the bottom right of the screen.



For tablets

Click the Participants panel button at the bottom of the screen. Then click the “Raise Hand” or “Q&A” button at the bottom right.



Raising your hand by Phone



- To raise your hand virtually, **key in *3.**
- The Host will see a hand up beside the last four digits of your phone number
- During the Q&A period, the Host will unmute you and let you know that you can speak

Meeting Objective

The objectives of tonight's meeting are:

- To provide an update on the final design
- To provide an update on the construction timeline
- To discuss anticipated construction impacts

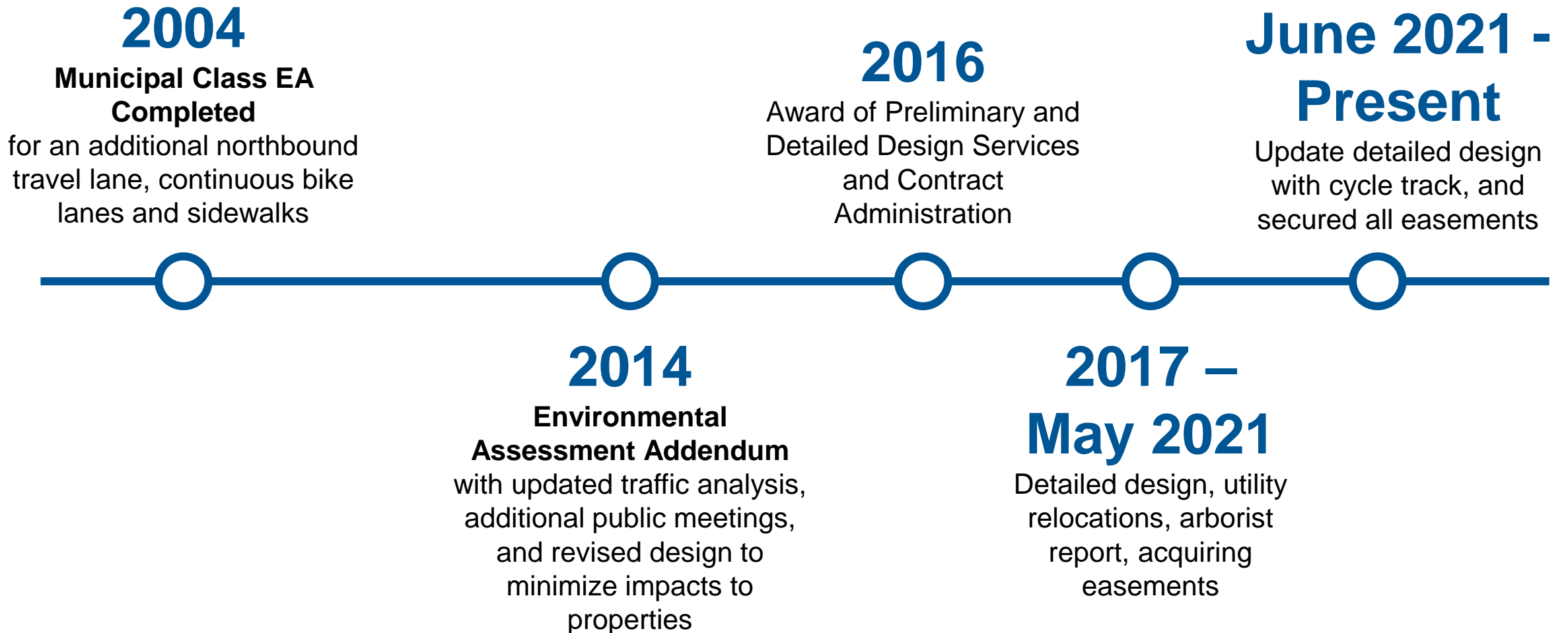
Port Union Road - Existing Conditions

- Missing sections of sidewalks
- Narrow sidewalks
- No cycling infrastructure
- Wide vehicle travel lanes
- Many substandard TTC stops
- Traffic delays, especially in the PM peak period heading northbound to HWY 401

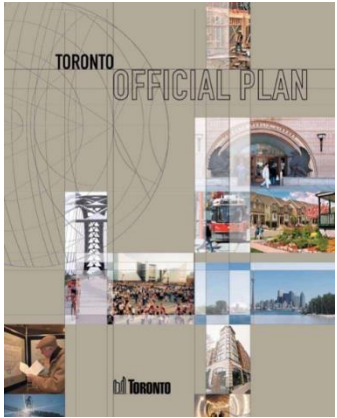


Study Area Map

Study Timeline – Historical



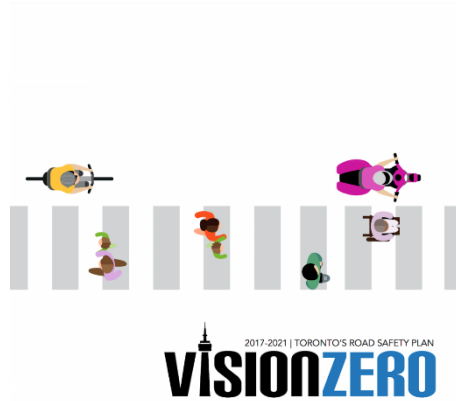
Policy and Rationale



THE OFFICIAL PLAN

Protect and develop the City's network of streets, and ensure that the associated rights-of-way are not closed to public use

The design of streets will incorporate a Complete Streets approach



VISION ZERO ROAD SAFETY PLAN

Eliminating traffic-related fatalities and serious injuries on Toronto's streets by prioritizing safety of vulnerable road users.



COMPLETE STREETS

Streets are places where everyone should feel safe, comfortable and connected.



CYCLING NETWORK PLAN

Port Union Rd is a planned cycling route which will connect to bike lanes on Lawrence Ave E to the south, and bike lanes on Sheppard Ave E to the north.

Existing Condition



Port Union Road at Winter Gardens Trail looking south

May 2021 Design



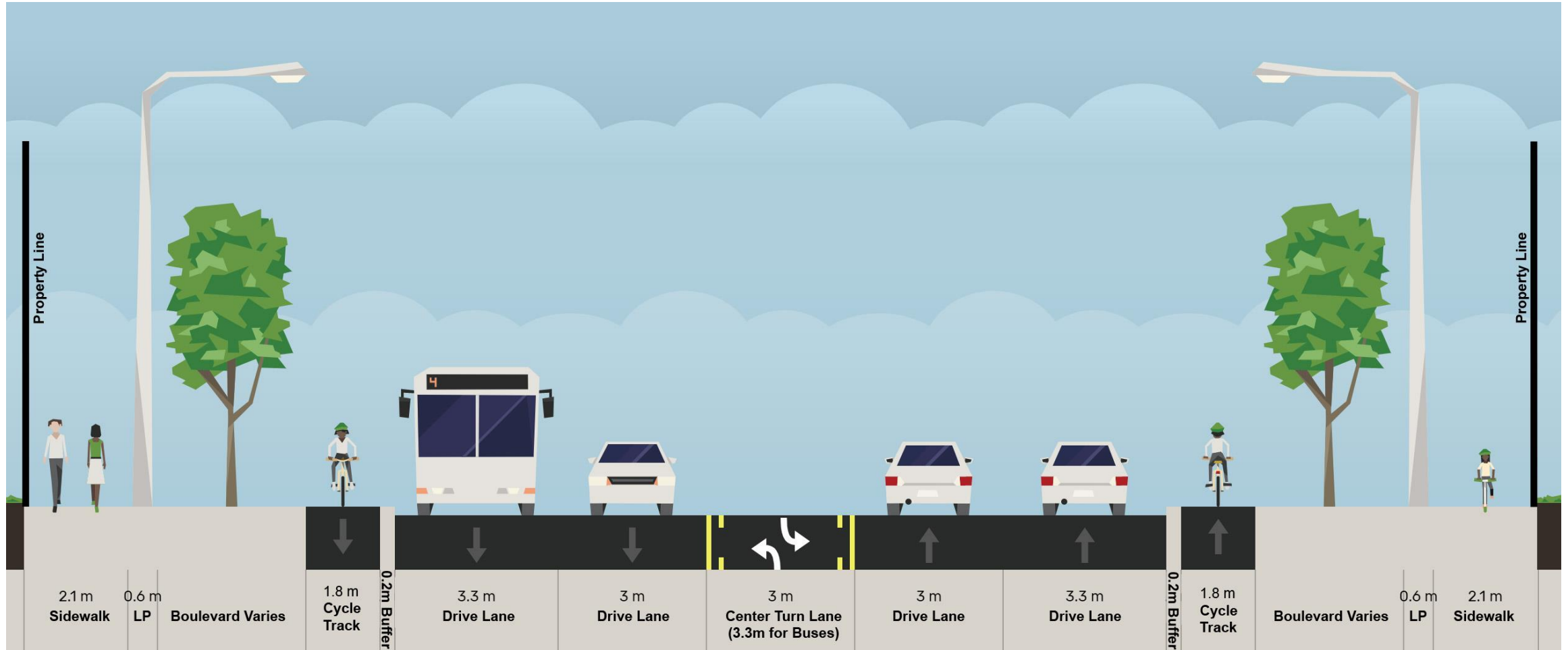
Artist Rendering – Port Union Road at Winter Gardens Trail looking south

Final Design

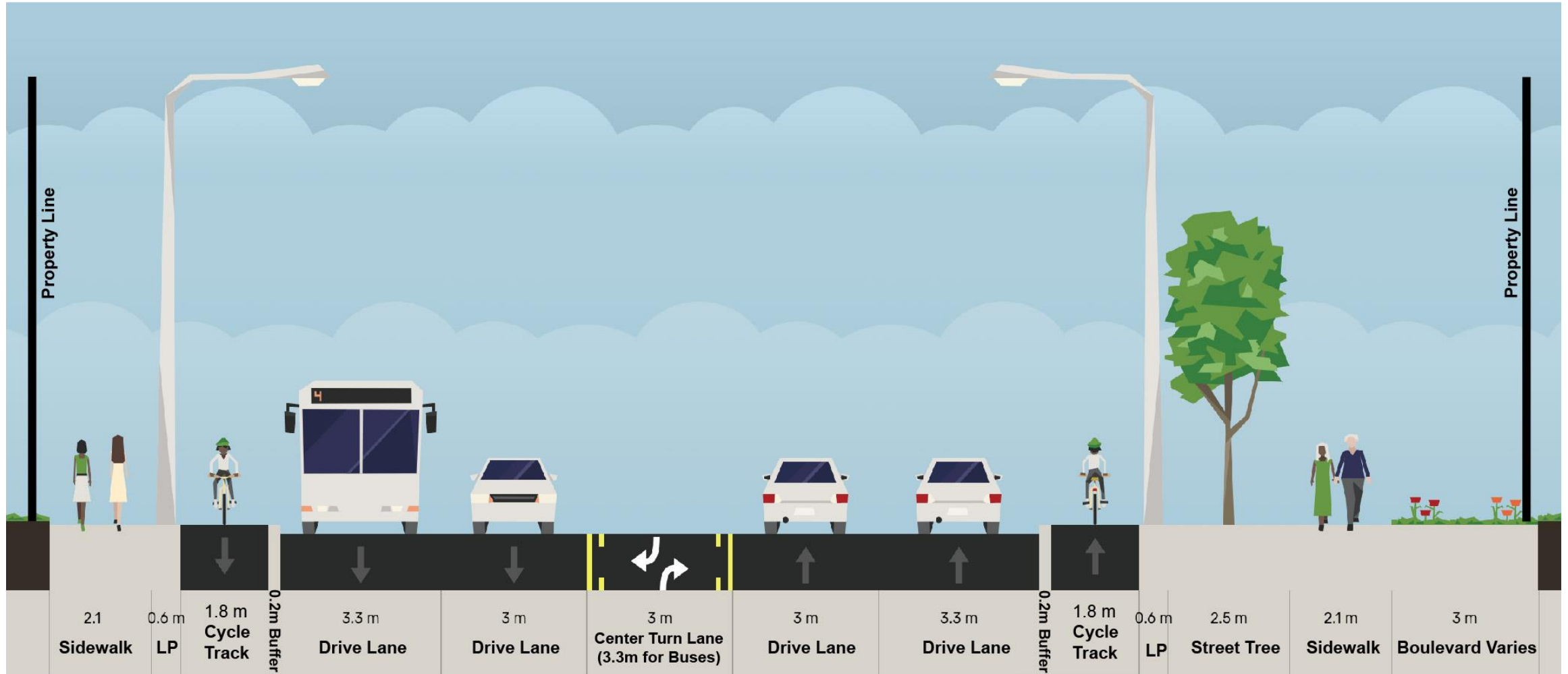


Artist Rendering – Port Union Road at Winter Gardens Trail looking south

Typical Cross-section



Typical Cross-Section at Constrained Sections



Separated Cycle Track

- 1.5m to 1.8m wide (not including the curb on either side, and buffer space in some locations)
- Generally runs the entire length of the road (approx. 1.9km) in both directions, including at TTC stops
- Transitions to street level at driveways and intersections
- Will remain open year round; cleared of snow by specialized snow plowing machines



Examples of Raised Cycle Tracks



Raised cycle track with tactile buffer on Sherbourne St



Integrated raised cycle track at a TTC bus stop on Sherbourne St

Summary of Improvements to Port Union

- Widening of Port Union Road to allow a new northbound lane
- Centre-turn lanes and narrower lane widths to improve road safety
- Raised 1.5m-1.8m cycle track on both sides of the street
- Formal bus stops with shelters integrated with the design of cycle tracks
- New and wider sidewalks on both sides of the street
- Updated street lighting and hydro poles
- Upgraded water service connections
- Removal of shoulders, addition of curbs throughout and upgrades to stormwater drainage
- Speed limit reduction to 50km/hr



Artist Rendering – Port Union Road at Winter Gardens Trail looking south

Tree Removals and Replacement

Tree Protection and Hoarding

- 212 trees will be protected during construction. Wherever possible, trees will be protected in groups

Tree Removals

- 173 trees will require removal to accommodate the construction
 - Approximately 50% are low quality or invasive
 - Over one-third are less than 10cm diameter (similar to replacement tree size)

Tree Replacement

- Tree replacement at a one-for-one ratio. All new trees to be native species with a minimum of 15 cubic meters of soil per tree where feasible. Where not feasible, tree replacement is being accommodated elsewhere within the area

Protected Species

- 18 inventoried trees have been identified as Kentucky Coffeetrees (*Gymnocladus dioicus*)
- 5 have been identified for removal, the balance will be protected

Toronto Transit Commission (TTC)

Bus Shelters

Existing bus shelters to be removed and updated at:

- Lawrence Ave. East & Port Union Road (northbound)
- Port Union Rd. and Conference Boulevard (southbound)
- Port Union Rd. and Clappison Boulevard (southbound)

Service During Construction

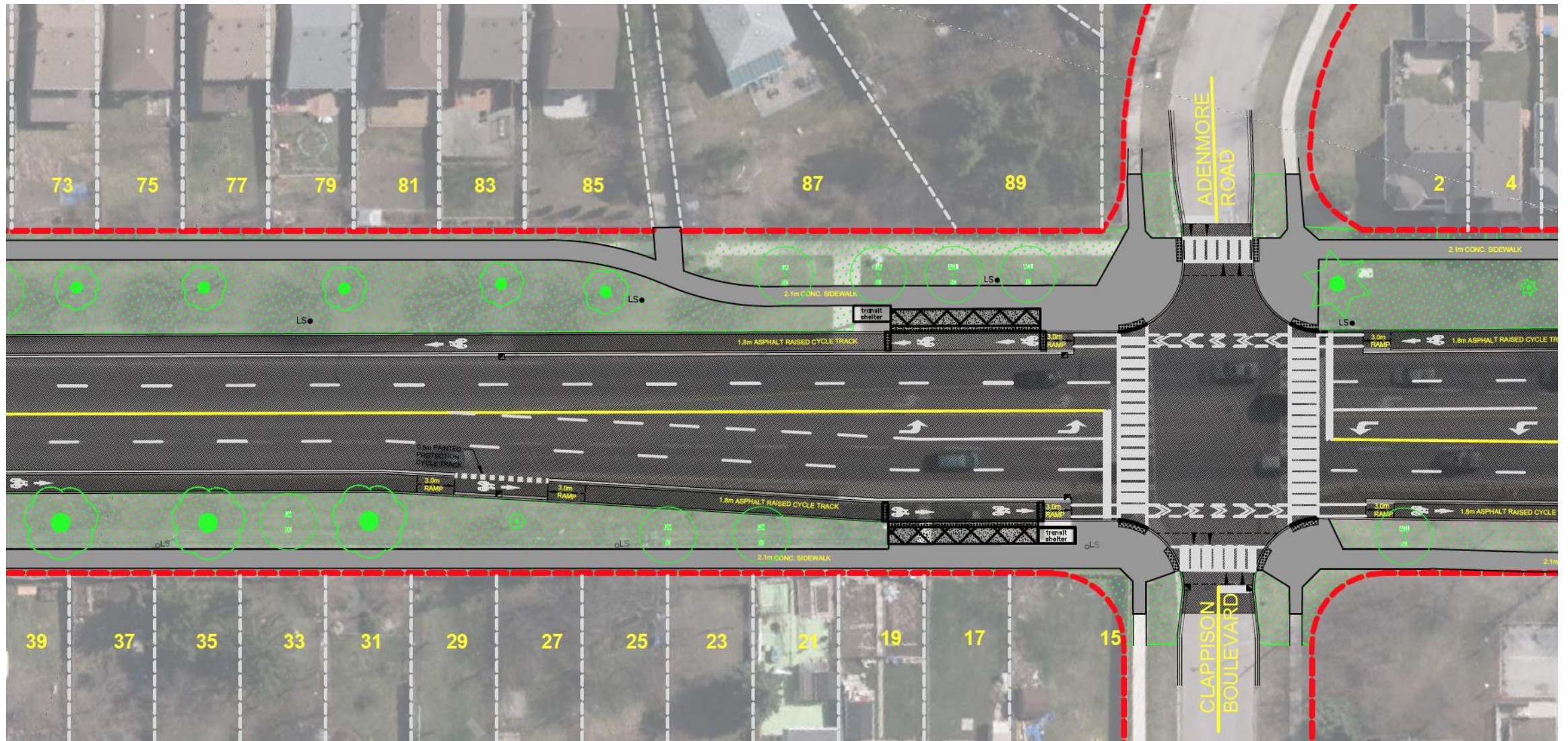
Bus service will be maintained during construction. Temporary bus pads will be provided as required.

Bus Stop Relocation

Existing bus stop at Winter Gardens Trail on east side of Port Union Road to be relocated approximately 100 metres north

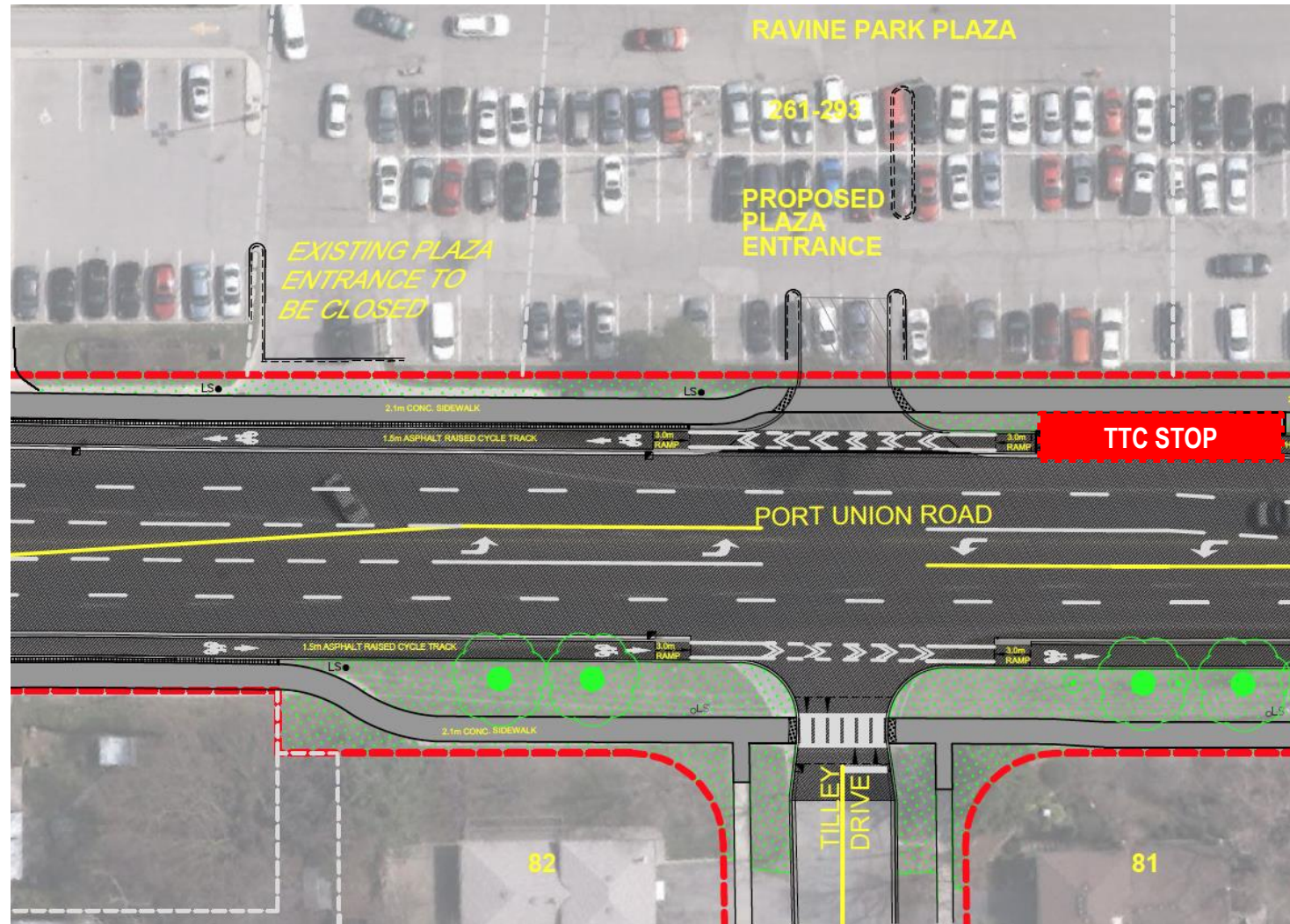


Roll Plan



Tilley Drive

- 2014 EA Addendum identified the need to relocate the plaza driveway access
- 27 reported collisions between Tilley Drive and Lawson Road since 1987
- Driveway relocation and turn lanes will improve safety by:
 - Improving visibility and minimizing turning conflicts;
 - Increasing the distance between the plaza exit and Lawson Road
 - Allowing vehicles to move out of traffic when making turns



Tilley Drive

- City staff will report to Scarborough Community Council in early 2022 on measures that can be implemented on Tilley Drive as part of the Port Union Road Improvements project to:
 - Reduce vehicle speeds, such as posted speed limit reductions and speed humps
 - Reduce the potential for cut-through traffic, such as turning restrictions and/or straight-through prohibitions



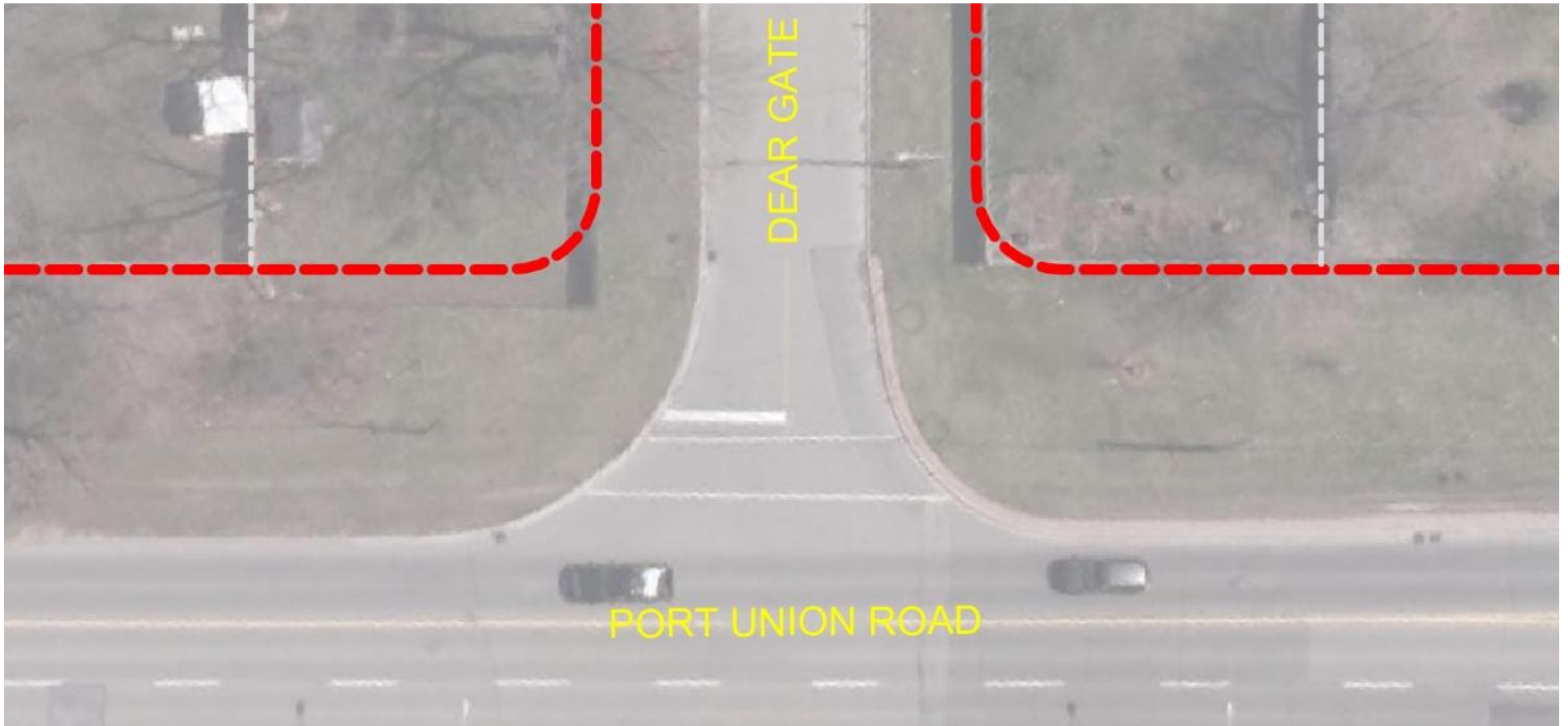
Local Street Intersection Road Safety Improvements

- Curb extensions with raised crosswalks and cycle tracks setback (where possible) from the street included at the majority of side streets to:
 - reduce **conflicts, vehicular speeds** and pedestrian **crossing distances**
 - improve **visibility** of pedestrians and cyclists and **sightlines** for turning drivers
- Raised crosswalks with curb extensions are at Blue Anchor, Adams Park, Conference, Winter Gardens and Clappison/Adenmore
- Curb extensions and raised, setback pedestrian and cycling crossings are at Dear Gate, Rozell, Josaly, Tilley and Ravine Park



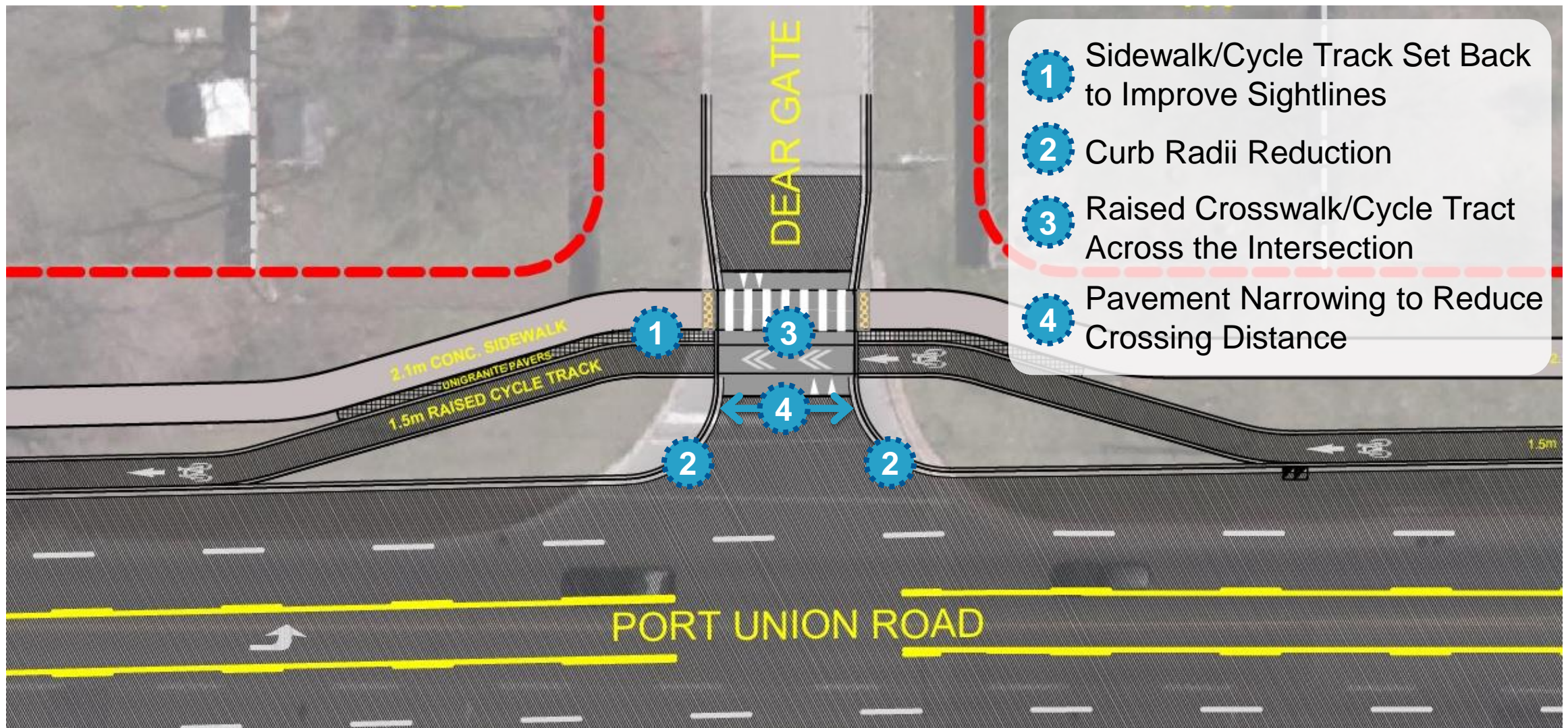
Example of Curb Extensions
Source: NACTO

Local Street Intersection Road Safety Improvements



Existing Condition at Dear Gate

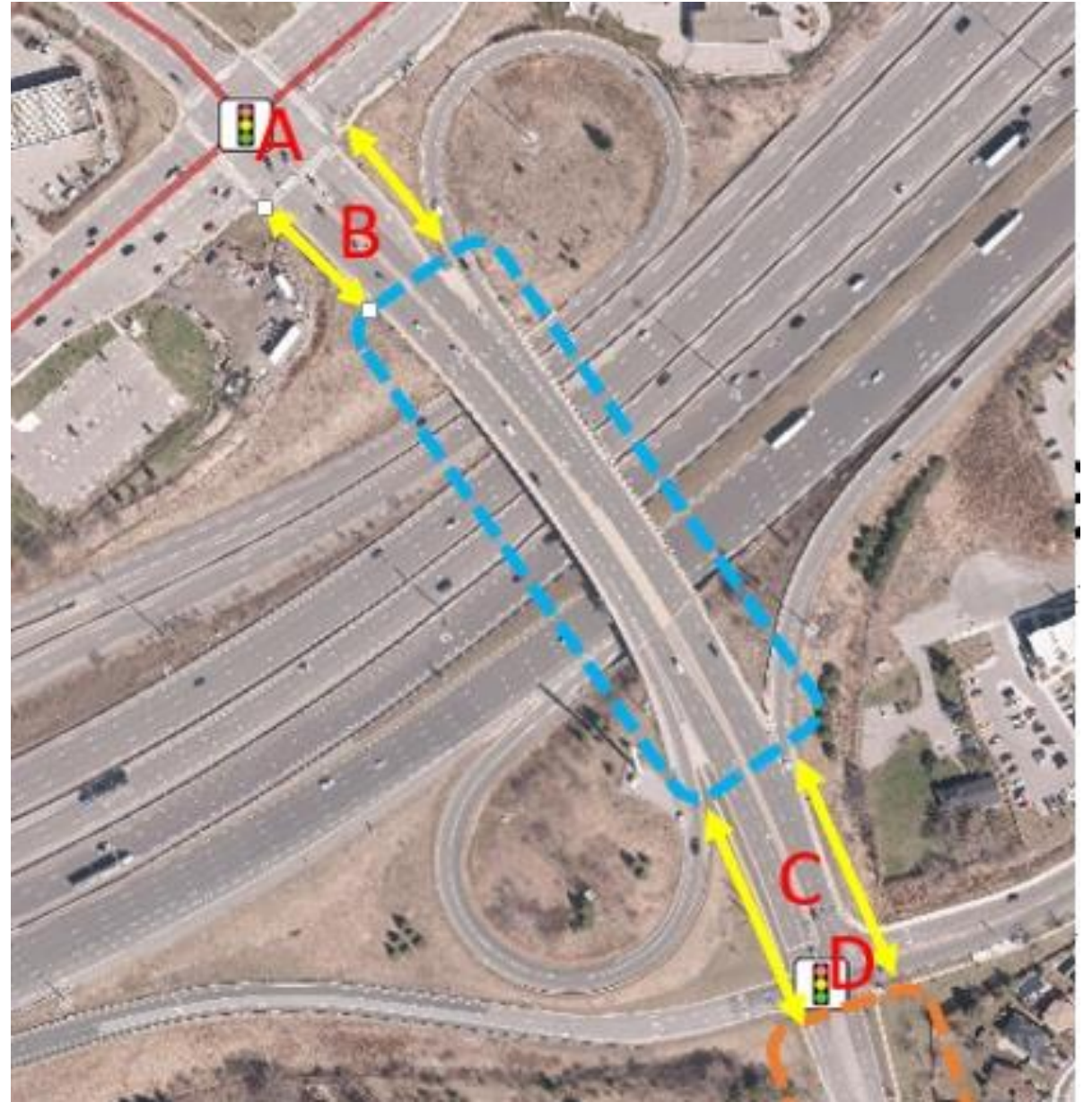
Local Street Intersection Road Safety Improvements



Example of the Planned Vision Zero Improvements at Local Streets

Walking/Cycling over Hwy 401 to Kingston Road

- 3.1m Multi Use Paths (MUPs) under construction by Ministry of Transportation (MTO) on Port Union (**blue dotted area**)
- Consultant being retained to advance detailed design to:
 - Convert MUPs to 1.5m uni-directional cycle lanes and 1.5m bi-directional sidewalks, similar to Bayview Avenue
 - Extend the MUPs from the limits of MTOs work zone to Kingston Road (**A/B**) and Island Road (**C/D**)
- Requires approval by MTO



Construction Timeline

Early 2022

*Tender construction
contract

**Summer
2022**

Road reconstruction begins

**Spring
2023**

Additional/finishing works*

Spring 2022

Contract awarded and
construction commences
(hydro pole relocation)

Late 2022

Substantial construction
complete*

* Schedule is subject to weather conditions, tendering and upcoming new regulations

What to Expect During Construction

Lane Restrictions

- Traffic restricted to single lane in each direction during phases of the construction

Temporary Traffic Signals

- Temporary traffic signals will be provided at existing signalized intersections.

Work Hours

- Monday to Friday: 7am - 7pm; Saturdays, Sundays and late evening work may be required but avoided as much as possible.

Property Access

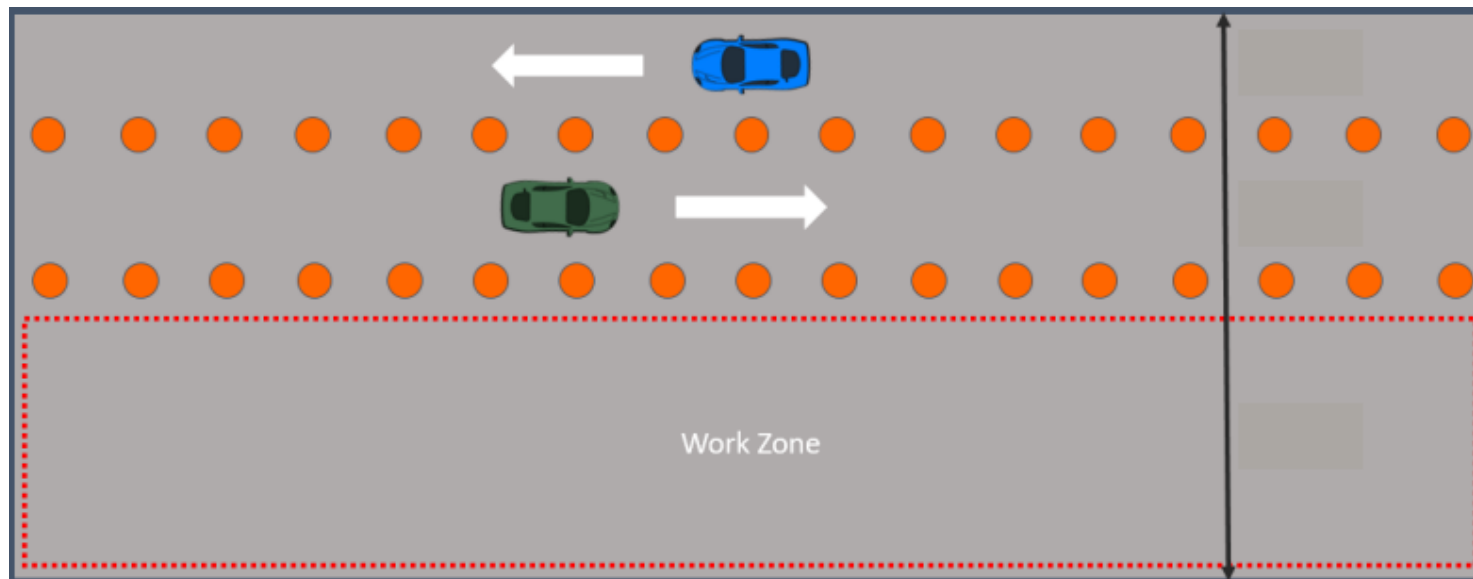
- Properties will remain accessible to pedestrians during construction at all times
- Vehicle access to residential properties will be restricted for 72 hours following concrete sidewalk and curb installations
- Residents will be notified one (1) week prior to commencement of concrete works
- Driveways to commercial properties will be completed in stages to facilitate continuous access

Sod and Trees

- New sod and trees will be planted following substantial completion of road works

Construction Staging

- **One lane of traffic** in each direction will be maintained at all times.
- **Pedestrian access** will be maintained on one side of the street at all times.
- **TTC routes** will continue to operate during construction; bus stops may be temporarily relocated, if required.
- **Multiple work zones** will be active in the construction area, in order to allow several crews to work concurrently, reducing the overall duration of the project.



Preparing for Construction

Pre-condition Inspection

- Third party inspection of properties close to the road work to document property conditions prior to construction
- Voluntary but recommended
- Results may be useful to substantiate claims for damage caused by construction.

Objects in the Right-of-Way

- Landscaping features, fencing, or other physical objects at the front of your property located in the City's Right-of-Way, may need to be removed before construction to avoid damage.



Example of road reconstruction

Next Steps

- Project will tender in early 2022
- Construction is expected to start in Spring 2022 with completion in 2023
- A Construction Notice will be mailed out 2 weeks prior to construction starting.
- The notice will provide residents with more detail about the scope of work, work hours, road and sidewalk access, traffic management, parking, and any changes to garbage/recycling.



*Construction schedule subject to change

**Based on weather conditions

Questions & Answer Period

How to Participate

- **By Phone** - To raise or lower your hand virtually, **key in *3**.
- **By Computer** - Click the Participants button at the bottom of the video (the Participants panel will open to the right). Then click the “Raise Hand” or “Q&A” button at the bottom right.
- **For smartphones** - Click the Participants panel button at the top right corner of the screen. Then click “Raise Hand” or “Q&A” at the bottom right of the screen.

Project Team

Steven Ziegler
Public Consultation Unit

Cassidy Ritz
Transportation Services

Casey Morris
Transportation Services

Stanley Yue
Engineering & Construction Services

Questions?

If you have any questions please contact:



Steven Ziegler

Senior Coordinator, Public Consultation Unit

Telephone - 416-392-2896

Email – PortUnion@Toronto.ca

toronto.ca/portunionroad/