

Bathurst Manor Neighbourhood Mobility Plan

Public Meeting #1

November 17, 2021



Land Acknowledgement

We acknowledge the land we are meeting on is the traditional territory of many nations including the Mississaugas of the Credit, the Anishnabeg, the Chippewa, the Haudenosaunee and the Wendat peoples and is now home to many diverse First Nations, Inuit and Métis peoples. We also acknowledge that Toronto is covered by Treaty 13 with the Mississaugas of the Credit.

Meeting Objectives

1. Introduce the Bathurst Manor Neighbourhood Mobility Plan study process
2. Overview the proposed road resurfacing plans on Wilmington Avenue
3. Receive feedback on proposed interim road safety improvements in the neighbourhood
4. Answer questions related to the Bathurst Manor Neighbourhood Mobility Plan and the proposed road resurfacing plans on Wilmington Avenue

Agenda

- | | |
|-------------------|--|
| 10 minutes | <ul style="list-style-type: none">• Introduction• Welcome from Councillor Pasternak |
| 25 minutes | <ul style="list-style-type: none">• Bathurst Manor Neighbourhood Mobility Plan |
| 10 minutes | <ul style="list-style-type: none">• Wilmington Avenue Road Resurfacing |
| 65 minutes | <ul style="list-style-type: none">• Collect feedback• Answer questions |
| 10 minutes | <ul style="list-style-type: none">• Next steps• Additional feedback opportunities (Social Pinpoint)• Wrap-up |

Introductions

Bathurst Manor Neighbourhood Mobility Plan

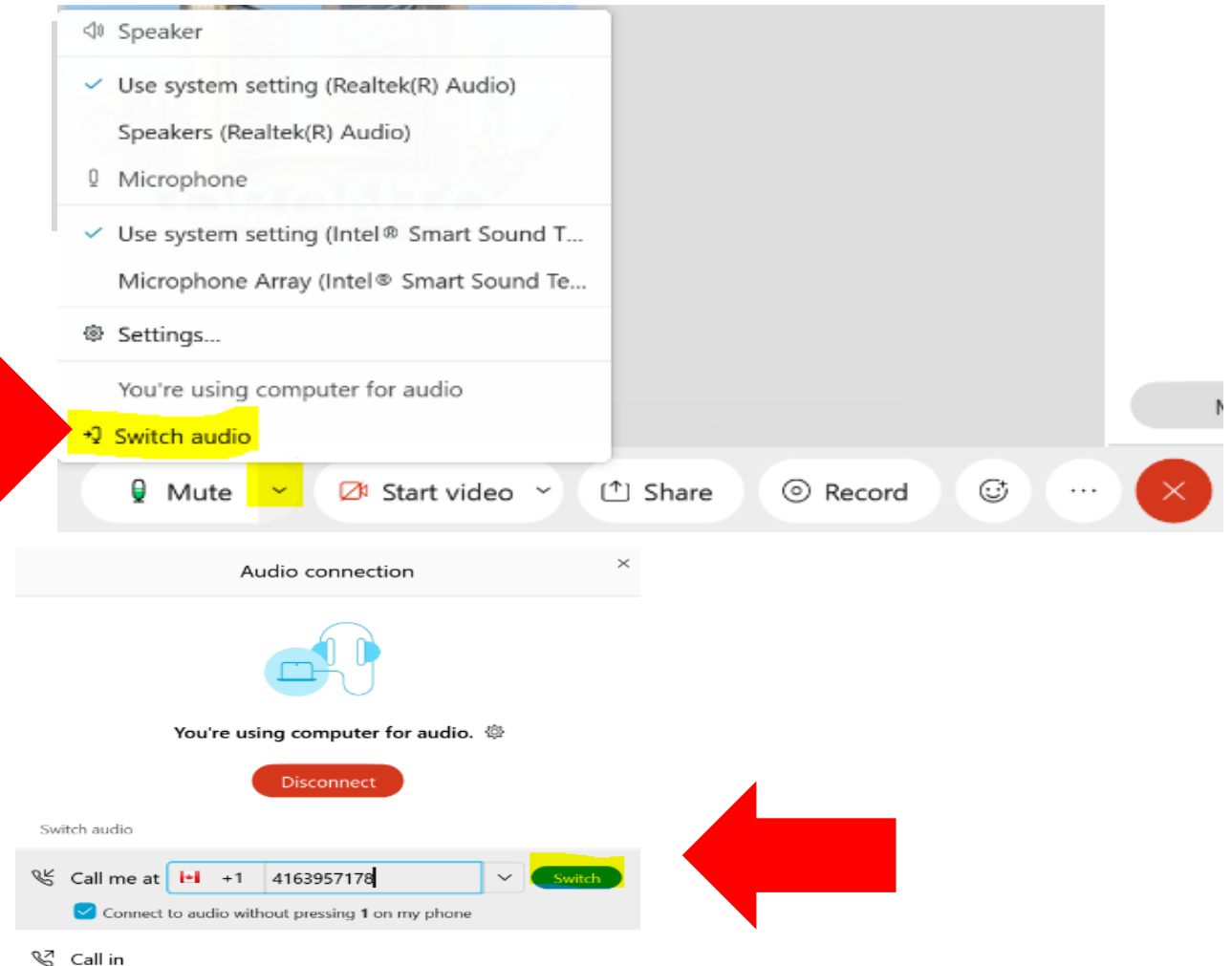
- Alyssa Krantzberg, Transportation Services
- Eric Chan, Transportation Services
- Alyssa Cerbu, Public Consultation Unit

Wilmington Avenue Road Resurfacing

- Becky Katz, Transportation Services
- Julius Aquino, Transportation Services

Webex Audio Trouble?

1. Click **the arrow** beside your mute button
2. Click **“Switch audio”**
3. Use **“Call me”** function
 - Enter your phone #
 - Webex will call your phone
 - No long distance charges



Audio still not working?

Call Into the Meeting

Dial: **416-915-6530**

When prompted for a meeting number
enter:

2462 641 6858

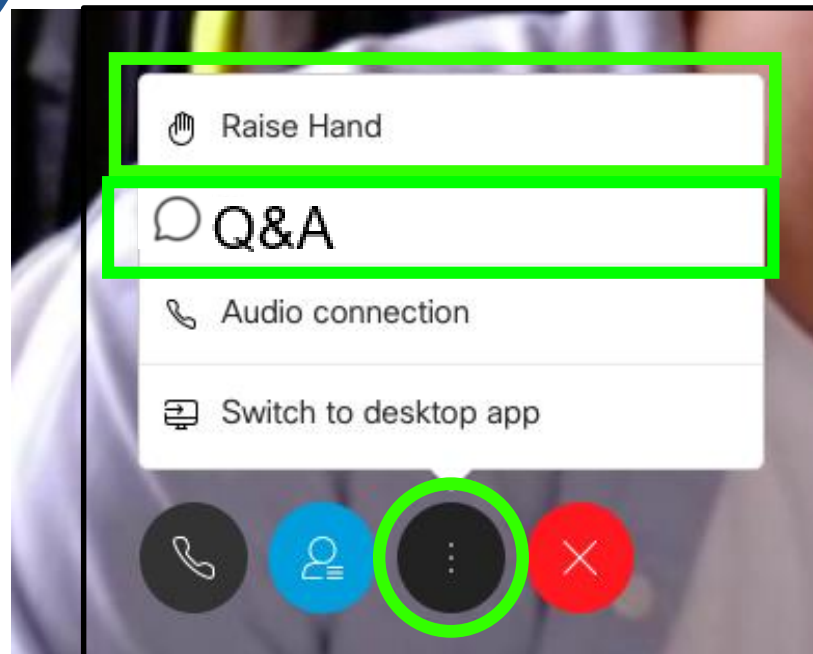
Participating by Computer

Raise your hand or type your question



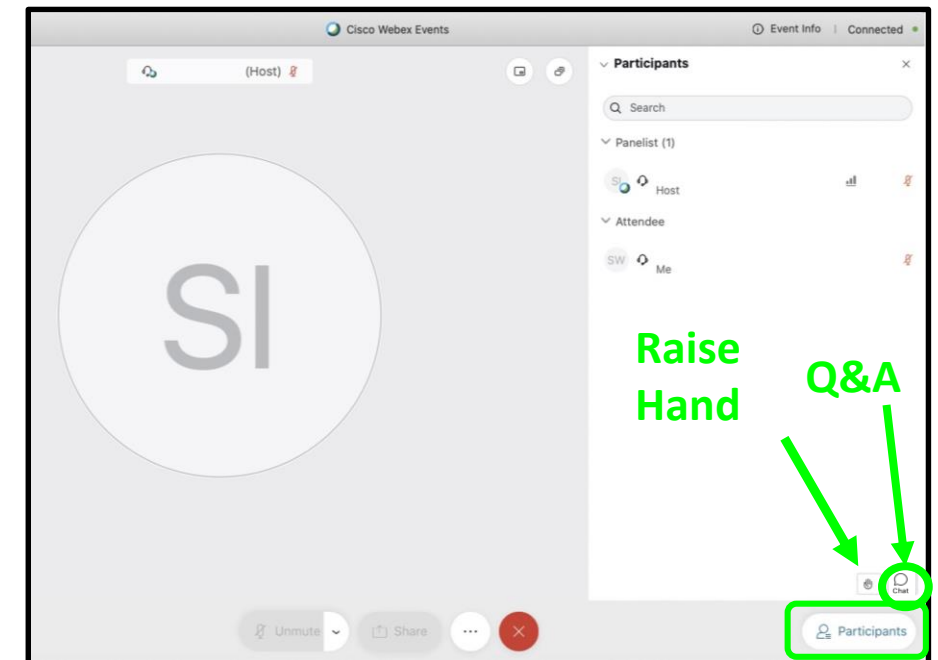
Via the [internet browser](#)

Click the “...” button at the bottom of the video window and select “Raise Hand” or “Q&A”.



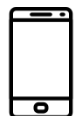
Via the [Webex App](#)

Click the Participants button at the bottom of the video (the Participants panel will open to the right). Then click the “Raise Hand” or “Q&A” button at the bottom right.



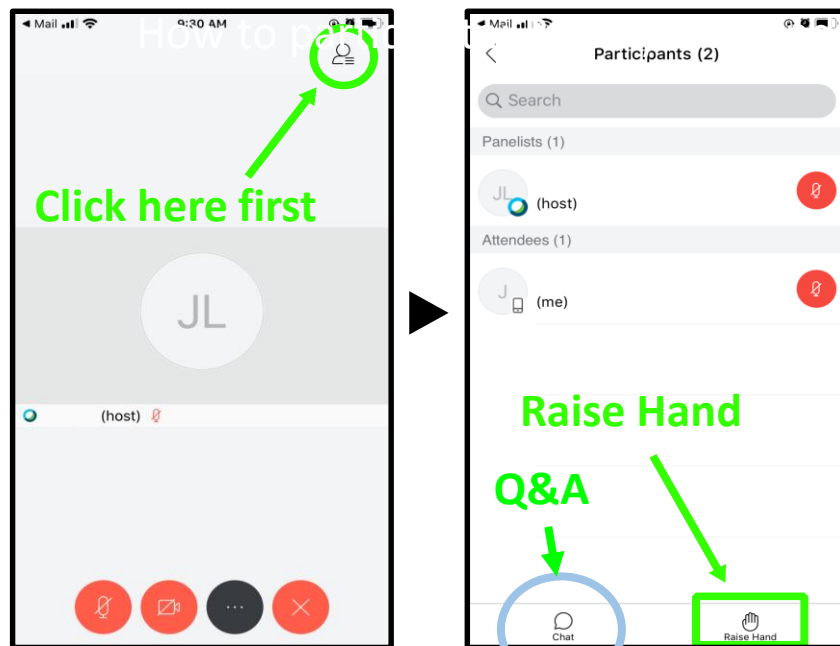
Participating by Smart Phone or Tablet

Raise your hand or type your question



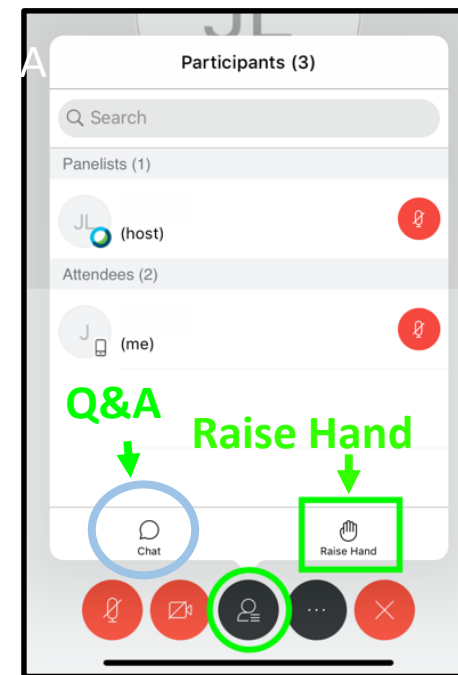
For smartphones

Click the Participants panel button at the top right corner of the screen. Then click “Raise Hand” or “Q&A” at the bottom right of the screen.



For tablets

Click the Participants panel button at the bottom of the screen. Then click the “Raise Hand” or “Q&A” button at the bottom right.



Raising your hand by Phone



- To raise your hand virtually, **key in *3.**
- The Host will see a hand up beside the last four digits of your phone number
- During the Q&A period, the Host will unmute you and let you know that you can speak

Code of Conduct

- **Be patient:** Virtual meetings don't always run as smoothly as planned.
- **Be respectful:** The City of Toronto is an inclusive public organization. Discriminatory, prejudicial or hateful comments and questions will not be tolerated and you will be removed from the meeting.
- **Be brief:** Limit yourself to one question or comment when called on to speak.



We want to hear from you – all questions are good questions!

Bathurst Manor Neighbourhood Mobility Plan



Bathurst Manor Neighbourhood Mobility Plan

In recent years, residents of Bathurst Manor have raised **increasing concerns** about

- cut-through traffic from outside the area
- excessive speeding, and
- road safety for vulnerable road users (e.g. pedestrians, cyclists, school children, etc...)

In 2019 North York Community Council directed Transportation Services to work with the community to develop a comprehensive plan to address these issues.

The Bathurst Manor Neighbourhood Mobility Plan will identify, prioritize and recommend **short-, medium-, and long-term improvements to traffic operations and road design** that address the three areas of concern and support City priorities around safety for all modes of transportation. The participation of local residents and stakeholders is essential to identifying appropriate and effective improvements for the neighbourhood.

Bathurst Manor Neighbourhood Mobility Plan

Historically, traffic management issues have been addressed by making changes to one particular street or intersection. The Bathurst Manor Neighbourhood Mobility Plan will use a holistic approach to assess and manage traffic issues within the neighbourhood. It will consider all modes of transportation, with an emphasis on improving conditions for vulnerable road users.

Neighbourhood Mobility Plans

- **Employ a neighbourhood perspective** to develop solutions that, together, support local objectives for mobility
- Identify **short-term improvements** that can be implemented in one to five years, as well as a **longer-term vision** for projects 5+ years into the future.

Study Area

The study area is bound by:

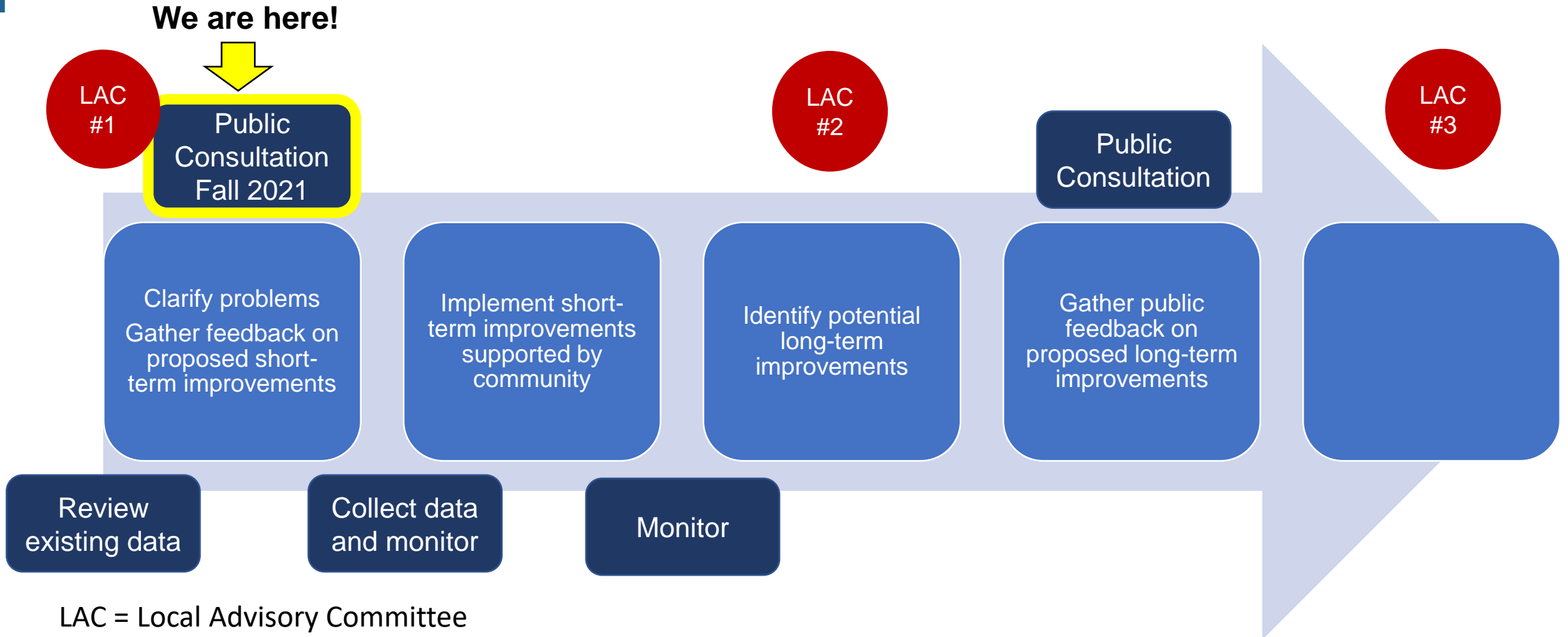
- Finch Avenue West to the North
- Sheppard Avenue West to the South
- Bathurst Street to the East
- Dufferin Street to the West

Neighbourhood features:

- Limited access points on the north and east side that lend itself to specific issues of cut-through traffic
- Bound by four major arterials



Study Process



LAC = Local Advisory Committee

What We Know

The information used to understand existing conditions in Bathurst Manor are gathered from various sources:

- **Traffic studies** conducted by the City to measure vehicle volumes, speeds and turning movement counts
 - Existing data from traffic studies conducted in 2007 and 2011 is outdated
 - Limited turning movement count data collected in 2019
 - COVID-19 has significantly delayed collection of up-to-date traffic data
- **Collision data** collected by Toronto Police Services
 - Collisions resulting death or serious injury
- **Concerns and requests** from the public and local Councillor
 - Calls to 311 about traffic operations and road safety are formally documented
 - City staff participated in previous discussions with a working group of local residents
- **Site visits and observations** in the neighbourhood
 - As a result of the COVID-19 pandemic, mobility patterns and road use are not typical

Problems & Opportunities

- 1. Local streets are used as cut-through routes.**
 - High volume of vehicles using streets within Bathurst Manor to get to destinations outside of the area
- 2. Speeding is common on cut-through routes.**
- 3. Additional safe mid-block crossing locations are needed to ensure the safety of pedestrians and vulnerable road users.**
 - The area has few signalized intersections or pedestrian cross-overs ('crosswalks')
- 4. There is potential for cycling network expansion.**

Impacts of COVID-19

- As a result of delays in data collection caused by COVID-19, Transportation Services has been unable to collect traffic and travel data in the Bathurst Manor neighbourhood
 - Data collection is not expected to resume until traffic and commuter patterns are closer to pre-COVID levels
 - Transportation Services requires data collection to resume in order to consider, recommend and implement longer-term improvements to the road network
- Acceleration of the Cycling Network Plan implementation and installation of Wilmington Avenue/Faywood Boulevard ActiveTO bikeway
- Quiet Streets project was implemented on Maxwell Avenue in 2020, but will not return in 2021-22

Phased Improvements

The Bathurst Manor Neighbourhood Mobility Plan will take a phased approach:

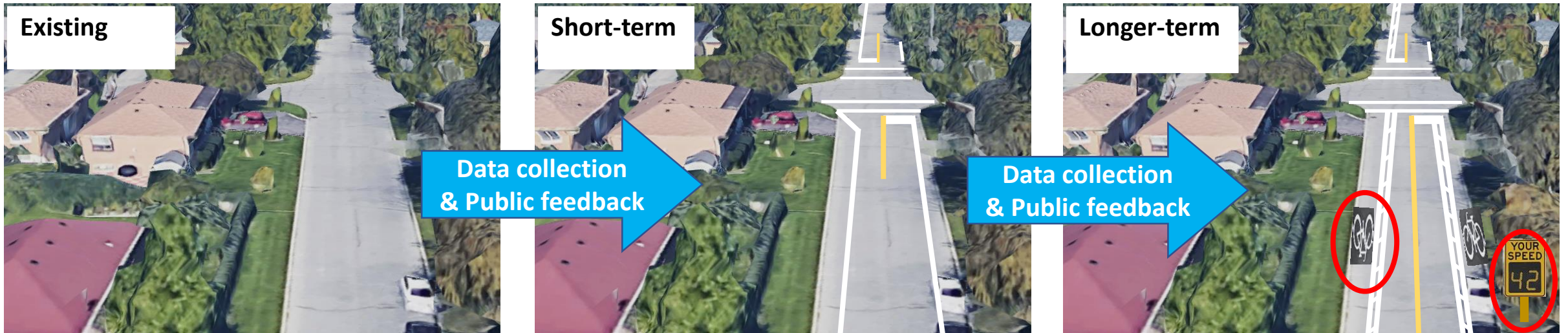
What is it?

- Implementation of multiple interventions that have a **combined effectiveness** when installed strategically over a period of time

Why this approach?

- Allows some improvements to be implemented now, without complete traffic data (short-term improvements)
- Optimizes the effectiveness of the interventions
- Allows for implementation and evaluation of interim improvements before making permanent changes
- May encourage positive behaviour from road users for a longer period of time

Phased Improvements



Examples:

- **Short-term:** Addition of pavement markings to create an urban shoulder, stop bars at intersection and pedestrian crossing area
- **Longer-term:** Addition of buffered bike lanes, centre line, and 'Watch Your Speed' sign

What We Heard From The Local Advisory Committee

Comments from the Local Advisory Committee:

- Both short-term improvements and enforcement should be considered to improve motorist compliance with traffic regulations
- A short-term traffic management improvement should be considered on one of the east-west routes in the neighbourhood.
- Speeding is a common concern on Wilson Heights Boulevard and speeding management tools could help reduce excessive speeding
- Separated bikeway on Wilmington Avenue could improve the safety of the facilities
- Temporary concrete blocks/in-road signage should not be considered at intersections where there are no sidewalks
- Curb extensions should not be considered in areas commonly used for school loading & unloading

Proposed Short-Term Improvements



Priority Areas

Short-term improvements will be focused in five priority areas:

1. Wilson Heights Boulevard
2. Maxwell Street
3. Codsell Avenue
4. Hove Street
5. Wilmington Avenue



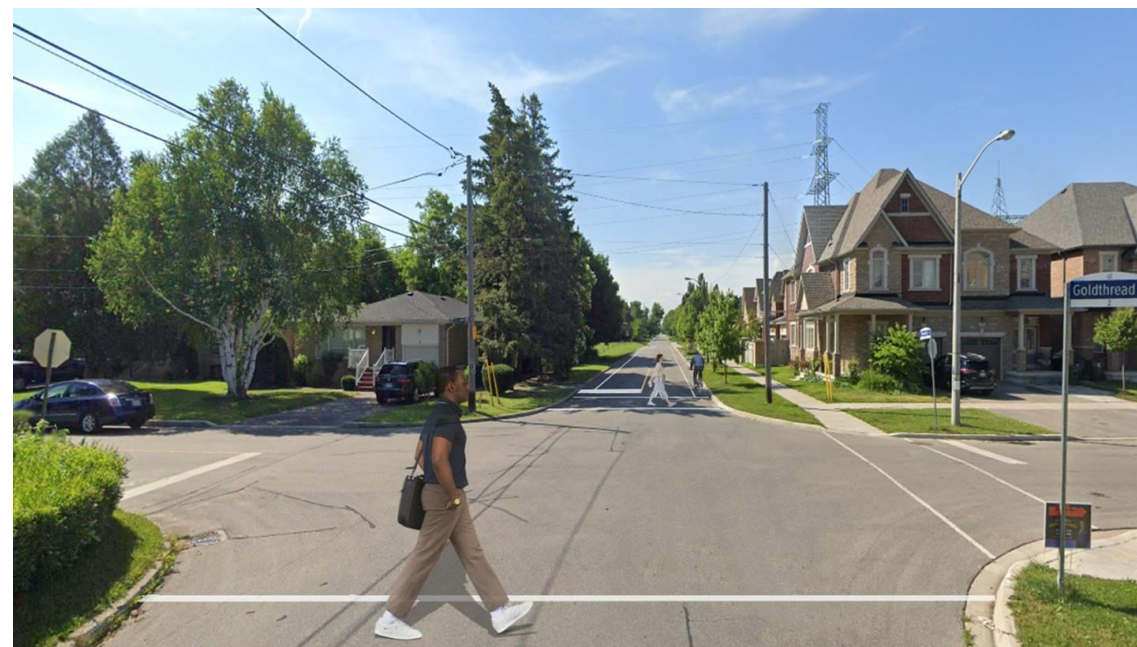
Maxwell Street and Codsell Avenue

Proposed: Urban shoulder

Objective: Speed and volume management

Locations: Maxwell St from Wilmington Ave to Sheppard Ave W; Codsell Ave from Tillplain Rd to Bathurst St

- Painted edge lines create narrower vehicle lanes, which could lead to reduced speeds
- Designates space in the roadway that can be used by people cycling and walking and alerts drivers to their presence
 - Not a long-term replacement for a dedicated bike lane or sidewalk
- Can be used for on-street parking, as per City bylaws (no changes to parking)



Maxwell Street

Proposed: Temporary concrete blocks

Objective: Speed and volume management

Locations: Maxwell St at Hove St/Combe Ave; Maxwell St at Overbrook Pl

- Concrete blocks with signage requires drivers to slow as they approach intersections
- Discourages cut through traffic
- Strategically located along linear desire lines
- Located at intersections with sidewalks
- Potential for art or decorative treatment



Wilson Heights Boulevard

Proposed: Edge lines with painted hatching and bollards and temporary speed feedback board

Objective: Vehicle speed and volume management

- Addition of edge lines with bollards would narrower vehicle lanes, which has a traffic calming effect
- Speed feedback boards inform motorists of their speed, improve awareness of travel speed, and encourage compliance with the speed limit reduction (from 40km/hr to 30km/hr)



Example: Edge lines with hatching reduce lanes widths on Avenue Rd

Hove Street at Sheppard Avenue West

Proposed:

Interim curb extension and radius reduction

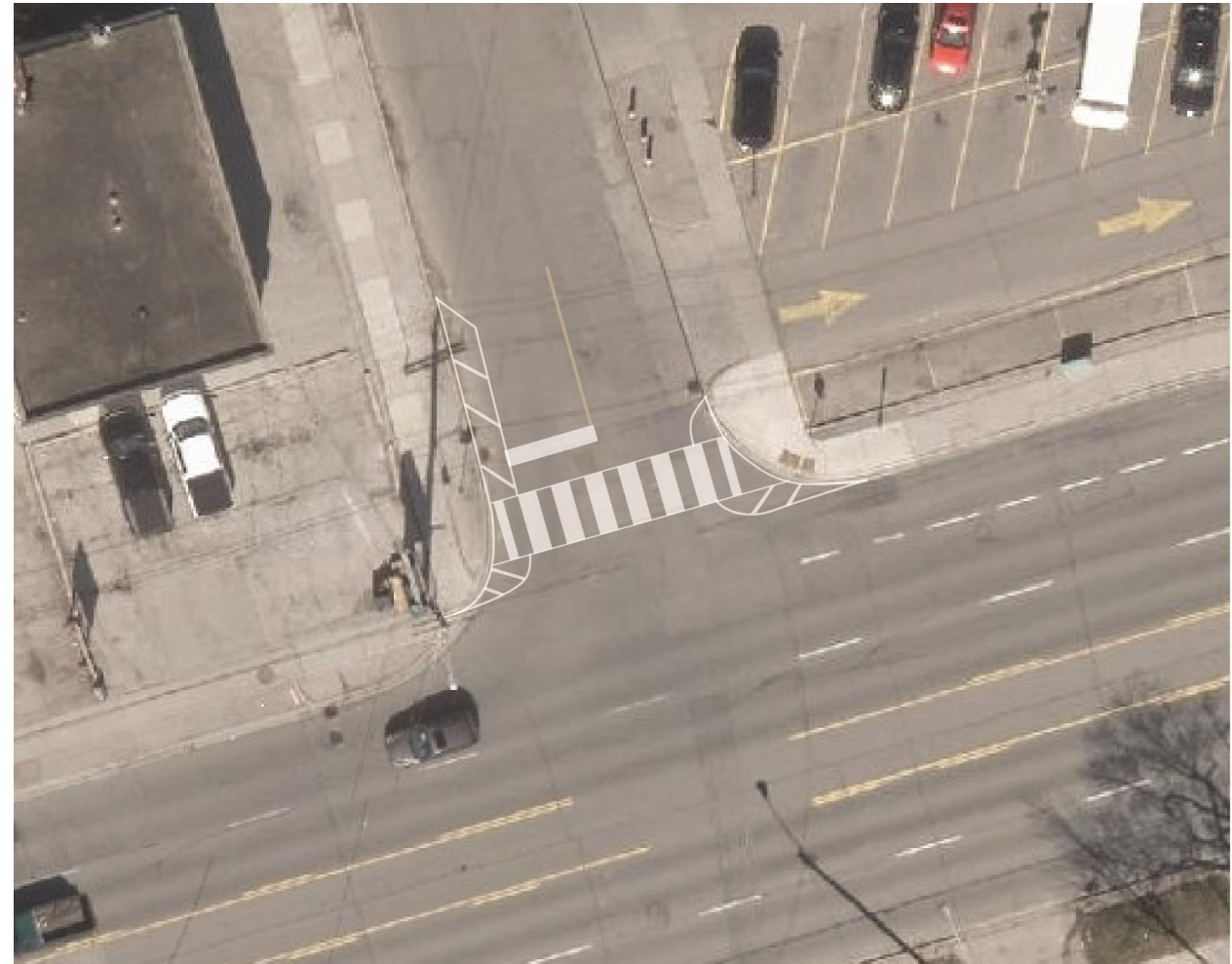
New pavement markings

Objectives:

Reduce pedestrian crossing distance;

Vehicle speed and volume management

- Pavement markings remind drivers to be cautious and watch for people walking and cycling
- Radius reductions improve safety for people cycling and walking



Wilmington Avenue Road Resurfacing



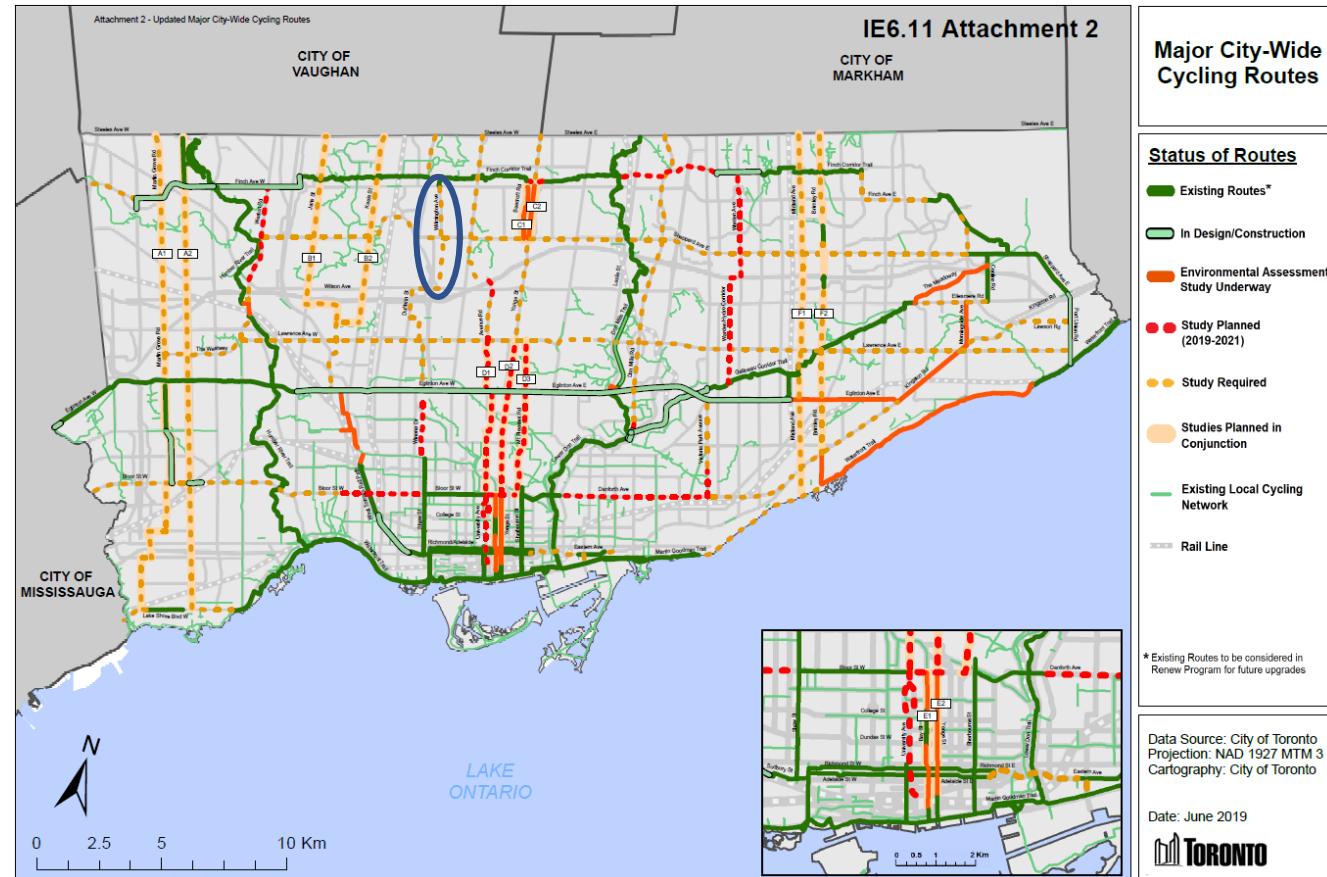
Wilmington Avenue | ActiveTO

- In 2020, Transportation Services implemented a temporary buffered bike lane and cycling route on Wilmington Avenue and Faywood Boulevard.
- It was selected to be accelerated because:
 - It provides a new north-south cycling route in North York
 - It connects the residential communities with key destinations including schools, community services, places of worship, and with parks and the Finch trails
 - It reduced the lane widths between Finch Avenue West and Sheppard Avenue West, which can help with speed reduction. There was a history dating back many years of concerns of speeding on the corridor.



Wilmington Avenue | Cycling Network Plan

- Toronto's adopted Cycling Network Plan's main goals are to connect, grow and renew the city's cycling routes.
- City Council approved includes Major City-Wide Cycling Network, which are significant corridors that could connect city residents to a low-stress bikeway network
- 28% of the Major City-Wide Cycling Network is complete (as of 2019)
- Target of 60% completion by 2031 and full completion by 2041
- Wilmington Avenue/Faywood Boulevard are part of the Major City-Wide Cycling Network.



Wilmington Avenue | ActiveTO Initial Findings

Total Daily Cyclists (Weekday Average)	Before (adj.)	After (2020)	After (2021) (adj.)	Change Before vs. After (2021)
Wilmington Ave / Faywood Blvd	170	160	160	(10)

Total Daily Pedestrians (Weekday Average)	Before (adj.)	After (2020)	After (2021) (adj.)	Change Before vs. After (2021)
Wilmington Ave / Faywood Blvd	1,010	940	1,070	+60

Average Motor Vehicle Travel Time (mins)	Direction	Fall 2019	Fall 2021	Change
Wilmington Ave / Faywood Blvd Finch Ave W - Sheppard Ave W	Northbound	4.1	3.6	-0.5
	Southbound	3.7	4.0	+0.3

Wilmington Avenue | 2022 Road Resurfacing

- In 2022, Wilmington Avenue between Finch Avenue West and Cavotti Crescent and between Overbrook Place and Kennard Avenue is programmed for a state of good repair road resurfacing due to the condition of the asphalt on the corridor.
- Road work provides the opportunity to improve the corridor and review complete streets features.
- As part of the 2022 road work, Transportation Services is proposing to make the buffered bike lanes on Wilmington Avenue permanent and additional improvements.



Wilmington Avenue | 2022 Road Resurfacing

Transportation Services is proposing the following to be included in the road resurfacing:

- New asphalt and basic accessibility upgrades
- Permanent installation of buffered bike lanes including improvements to pavement markings and signage.
- Removal of left turn lane at Wilmington Avenue and Maxwell Street to allow for continuous bike lanes
- Raised bus/bike transit stop improvements
- Greening, tree planting and permeable pavers, where space allows in the sidewalk boulevard
- Permanent radius reductions, where utilities allow
- Considerations for improvements at pick-up/drop-off around schools including:
 - Wilmington Elementary School
 - Charles H. Best Middle School
 - Hebrew Academy of Toronto
 - (no pick-up/drop-off due to existing tree conflicts)

Wilmington Avenue | 2022 Road Resurfacing



Integrated Raised
Bus/Bike Stops



Permanent Buffered Bike Lane Markings



Sodded and Treed Boulevard, where possible

Map of All Proposed Short-Term Improvements

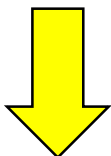


Legend

- Edge line
- Curb extension
- Temporary concrete blocks
- Road resurfacing

Next Steps

We are here!



New traffic study data anticipated in late Fall 2021

LAC #1

Public Consultation Fall 2021

LAC #2

Public Consultation

LAC #3

Clarify problems
Gather feedback on short-term improvements

Implement short-term improvements supported by community

Identify potential medium- and long-term improvements

Gather public feedback on potential long-term improvements

Finalize the long-term plan for Bathurst Manor

Seek approval from Community Council

Implement improvements in coordination with other City processes

Review existing data

Monitor short-term improvements and collect data

Questions





Discussion

Do you have questions about the proposed short-term improvements?

Are there other locations in the neighbourhood where improvements should be considered?

Reminder: How to Participate

- **By Phone** - To raise or lower your hand virtually, **key in *3**.
- **By Computer** - Click the Participants button at the bottom of the video (the Participants panel will open to the right). Then click the “Raise Hand” or “Q&A” button at the bottom right.
- **For smartphones** - Click the Participants panel button at the top right corner of the screen. Then click “Raise Hand” or “Q&A” at the bottom right of the screen.

Thank you | Provide Additional Feedback

Provide Feedback by Wednesday,
December 1, 2021 through:

- The interactive map
- Email
- Phone



CONTACT US

If you have any questions or concerns
feel free to contact:

Alyssa Cerbu, Senior Coordinator
416.338.0503

[Toronto.ca/BathurstManor](https://toronto.ca/BathurstManor)

Interactive Map

Visit: www.Toronto.ca/BathurstManor

News & Updates

Update #1 (October 27, 2021): Virtual Public Meeting: Bathurst Manor Neighbourhood Mobility Plan (NMP)

The City of Toronto is inviting residents to learn more about the Bathurst Manor NMP and provide feedback on the traffic, speeding and road safety improvements.

Virtual Public Meeting

- **Date:** Wednesday, November 17, 2021
- **Time:** 6-8 p.m.
- **Register:** Please [Register in Advance](#)
- **Call-in details:** dial 416-915-6530 and enter the access code 2462 641 6858

If you are unfamiliar with the Webex Events platform or if it is your first time participating in a City Virtual Meeting, read more on how to [Participate in City Virtual Engagement Events](#).

Interactive Map

Visit our [interactive Social Pinpoint map](#) to learn more about the NMP and provide your comments and ideas.

Interactive Map



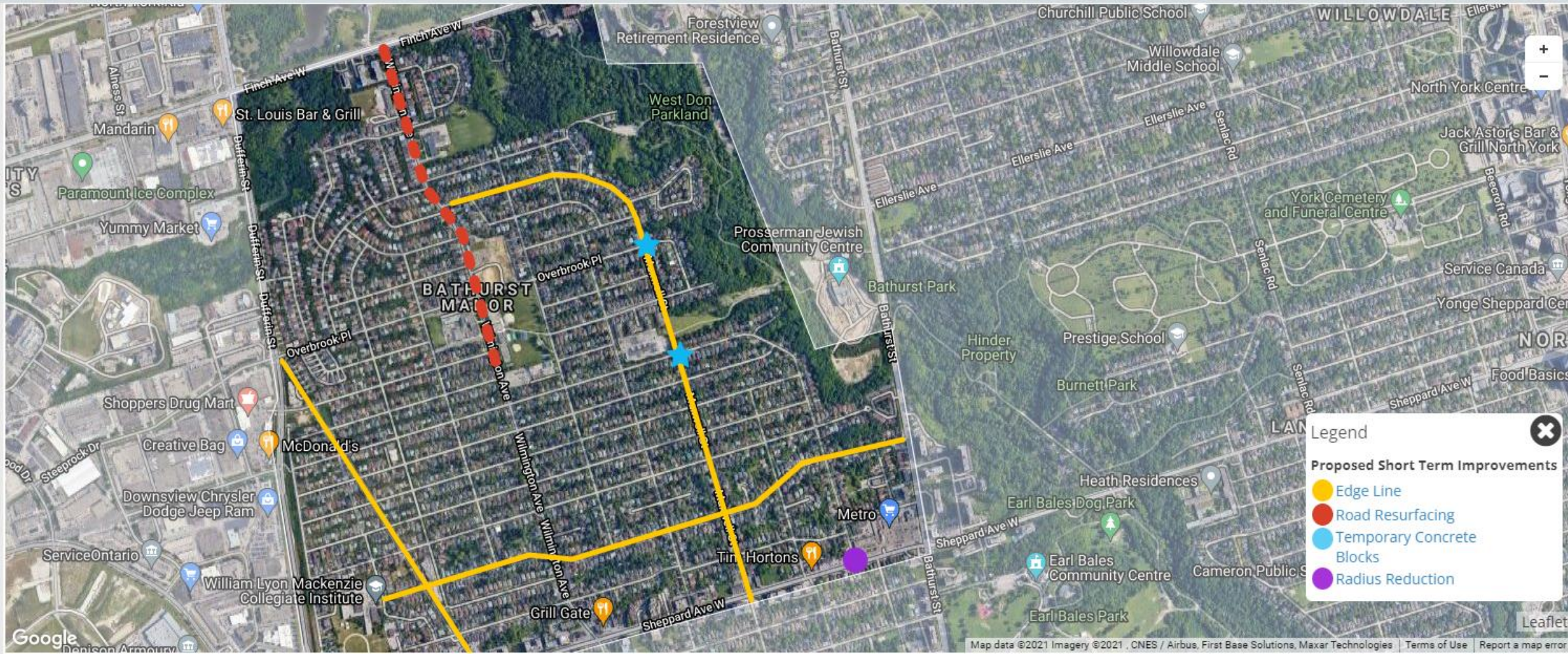
Drag to comment > Make a Comment Ideas and Suggestions Something I Like



ABOUT

ACTIVITY

SURVEY



Google

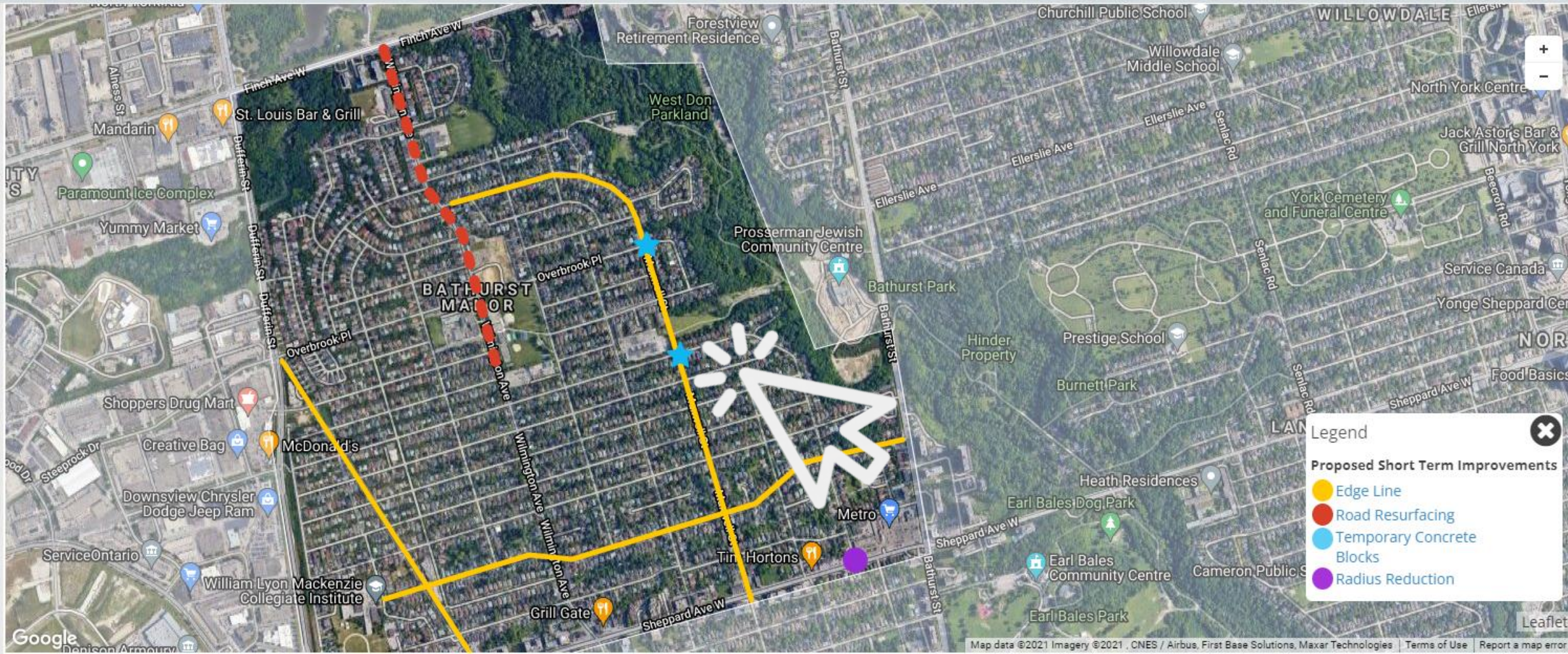
1. Click on the symbols & lines to learn more



Drag to comment > Make a Comment Ideas and Suggestions Something I Like



ABOUT
 ACTIVITY
 SURVEY



Legend

Proposed Short Term Improvements

- Edge Line
- Road Resurfacing
- Temporary Concrete Blocks
- Radius Reduction

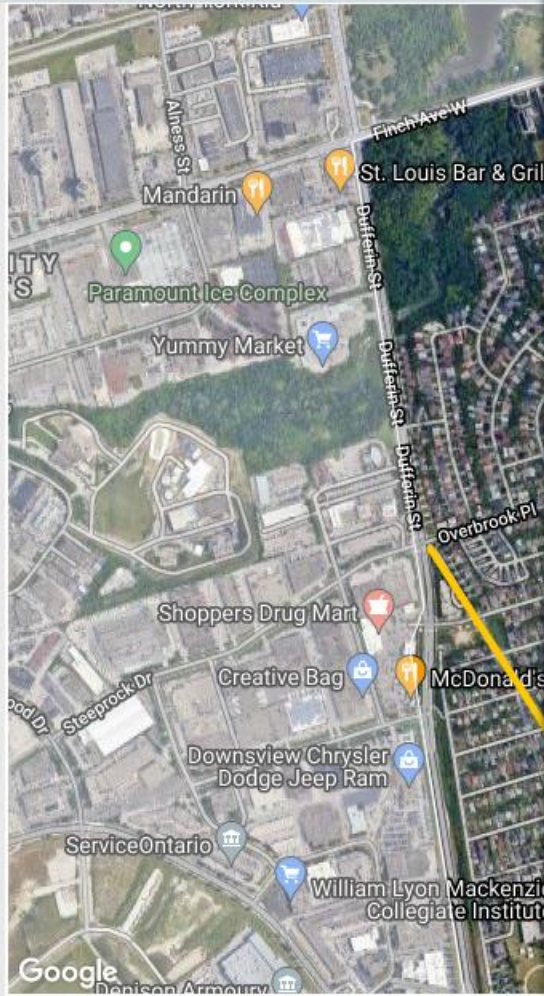


Google

1. Click on the symbols & lines to learn more



- ABOUT
- ACTIVITY
- SURVEY



Temporary Concrete Blocks



Rendering of proposed temporary concrete blocks in the Bathurst Manor neighbourhood.

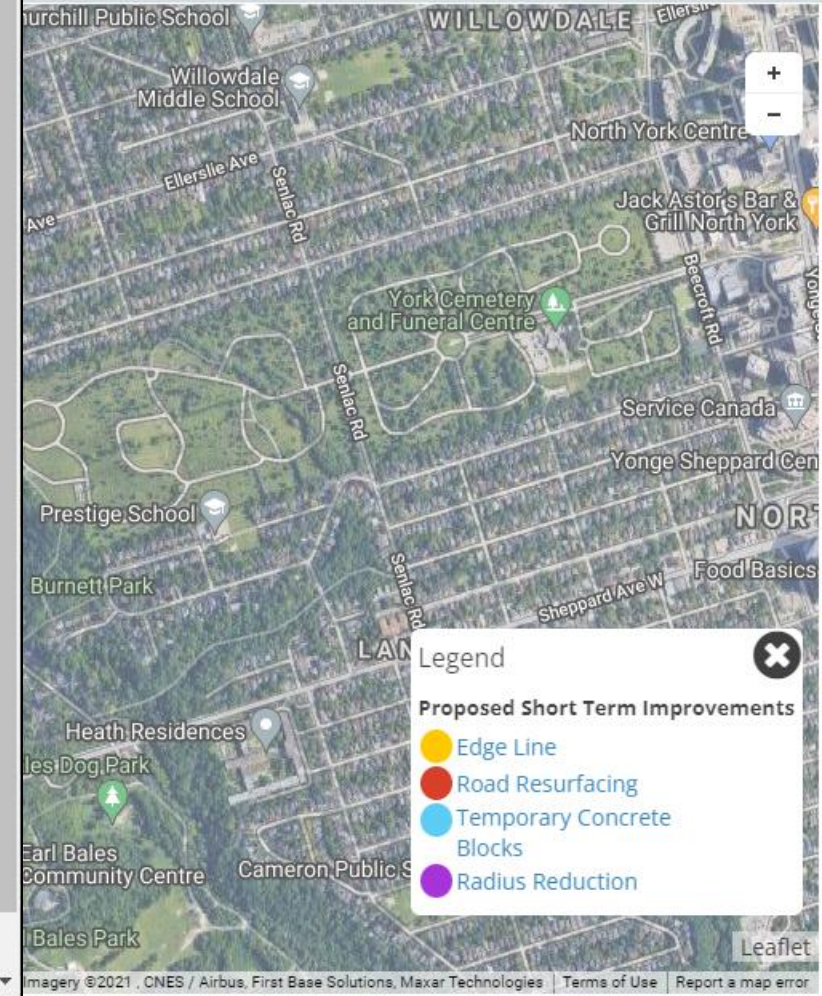
Temporary concrete blocks with signage help to lower speed and manage vehicle volumes.

Locations:

- Maxwell St at Combe Ave
- Maxwell Ave at Overbrook Ave

Details:

- Requires drivers to slow as they approach intersections
- Discourages cut through traffic
- Strategically located along linear desire lines
- Located at intersections with sidewalks
- Potential for art or decorative treatment



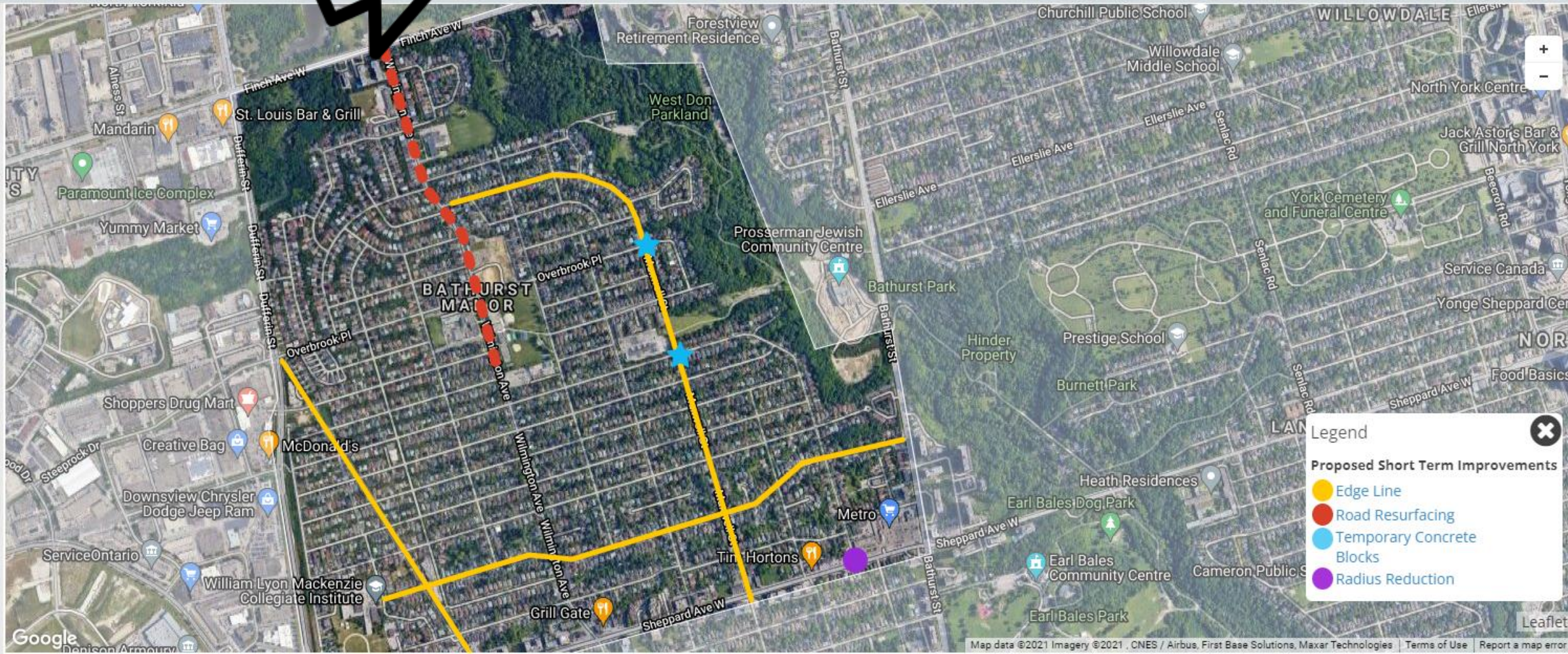
2. Drag a “pin” to a specific area to comment



Drag to comment >

Make a Comment Ideas and Suggestions Something I Like

- ABOUT
- ACTIVITY
- SURVEY



2. Drag a “pin” to a specific area to comment



Drag to comment >



ABOUT

ACTIVITY

SURVEY

Leave us your comment

Comment* (Required)
Temporary concrete blocks would/would not be helpful at this location because...

First name: Alyssa
Last name: Cerbu

Phone: Phone Number
Zip code: Zip code

Attach an optional photo
[Camera icon] Attach
Supports png, jpg/jpeg, gif and heic

Your email* (Required): alyssa.cerbu@toronto.ca Remember

I agree my comment will be used as indicated in the [terms and conditions](#)

Add Comment

Legend
Proposed Short Term Improvements
● Edge Line
● Road Resurfacing
● Temporary Concrete Blocks
● Radius Reduction

November 17, 2021
Wednesday

3. Complete the survey to the left of the map



Drag to comment > Make a Comment Ideas and Suggestions Something I Like



The map displays the Bathurst Major area with several proposed improvements highlighted in yellow (Edge Line), red (Road Resurfacing), and blue (Temporary Concrete Blocks). A purple dot indicates a Radius Reduction. A legend in the bottom right corner defines these symbols. A pink box highlights the 'SURVEY' icon in the left sidebar, with a large black arrow pointing to it.

Legend

Proposed Short Term Improvements

- Edge Line
- Road Resurfacing
- Temporary Concrete Blocks
- Radius Reduction

ABOUT

ACTIVITY

SURVEY



socialpinpoint

Google

3. Complete the survey to the left of the map

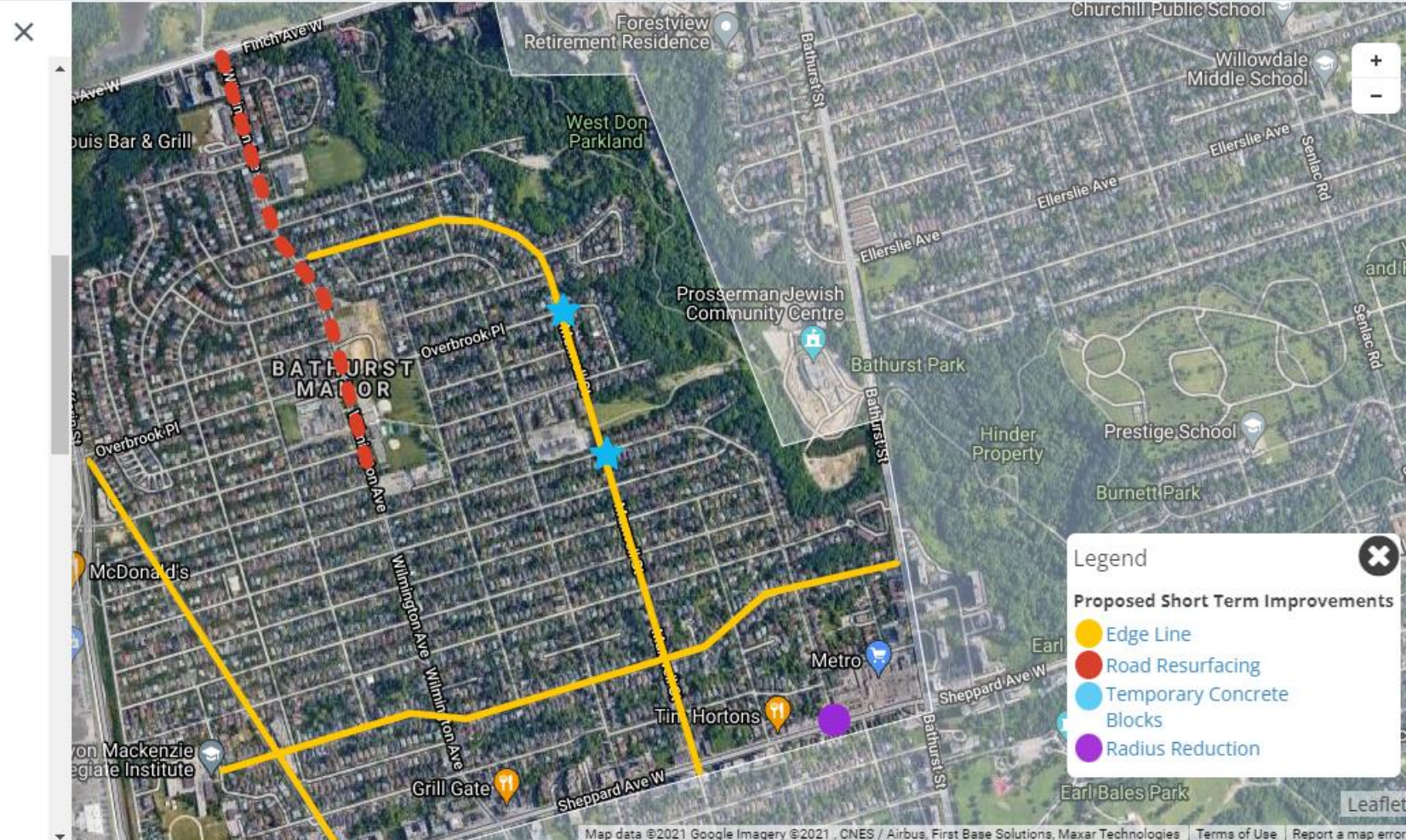


Drag to comment > Make a Comment Ideas and Suggestions Something I Like



Please describe your relationship to the Bathurst Manor neighbourhood. Check all that apply. *

- I live in or very near this neighbourhood
- I work in or very near this neighbourhood
- I own property within or near this neighbourhood
- I represent a business within or near this neighbourhood
- I travel within or near this neighbourhood
- Other (describe)



Legend

Proposed Short Term Improvements

- Edge Line
- Road Resurfacing
- Temporary Concrete Blocks
- Radius Reduction



Thank you | Provide Additional Feedback

Provide Feedback by Wednesday,
December 1, 2021 through:

- The virtual mapping tool
- Email
- Phone



CONTACT US

If you have any questions or concerns
feel free to contact:

Alyssa Cerbu, Senior Coordinator
416.338.0503

[Toronto.ca/BathurstManor](https://toronto.ca/BathurstManor)

Thank you!

