

# GLEN ROAD PEDESTRIAN BRIDGE & TUNNEL CONSTRUCTION VIRTUAL PUBLIC INFORMATION EVENT

THURSDAY, NOVEMBER 18, 2021, 6:30 p.m.



*\*Artistic concept, all elements not shown*

# Land Acknowledgement

To commence this meeting we would like to first take a moment to acknowledge the land on which we are meeting.

This land is the traditional territory of many nations including the **Mississaugas of the Credit**, the **Anishnabeg**, the **Chippewa**, the **Haudenosaunee** and the **Wendat peoples** and is now home to many diverse Indigenous, Inuit and Métis peoples. We also acknowledge that Toronto is covered by Treaty 13 with the Mississaugas of the Credit.

# Agenda

- Introductions
- Project Background
- Final Design Overview
- Construction Plan
- Construction Impacts
- Maintenance
- Q&A

# Opening Remarks

Councillor Mike Layton  
City of Toronto Ward 11  
University-Rosedale



Councillor Kristyn Wong-Tam  
City of Toronto, Ward 13  
Toronto Centre



# Purpose of this Event



To inform the community of the pedestrian bridge and tunnel (and adjacent areas) **final design**



To provide the community with information about the upcoming **construction work**



To provide an opportunity for the **public to ask questions**

# Code of Conduct

**Be patient:** Virtual meetings don't always run as smoothly as planned.

**Be brief:** Limit yourself to one question or comment when called on to speak.

**Be respectful:** The City of Toronto is an inclusive public organization. Discriminatory, prejudicial or hateful comments and questions will not be tolerated and you will be removed from the meeting.



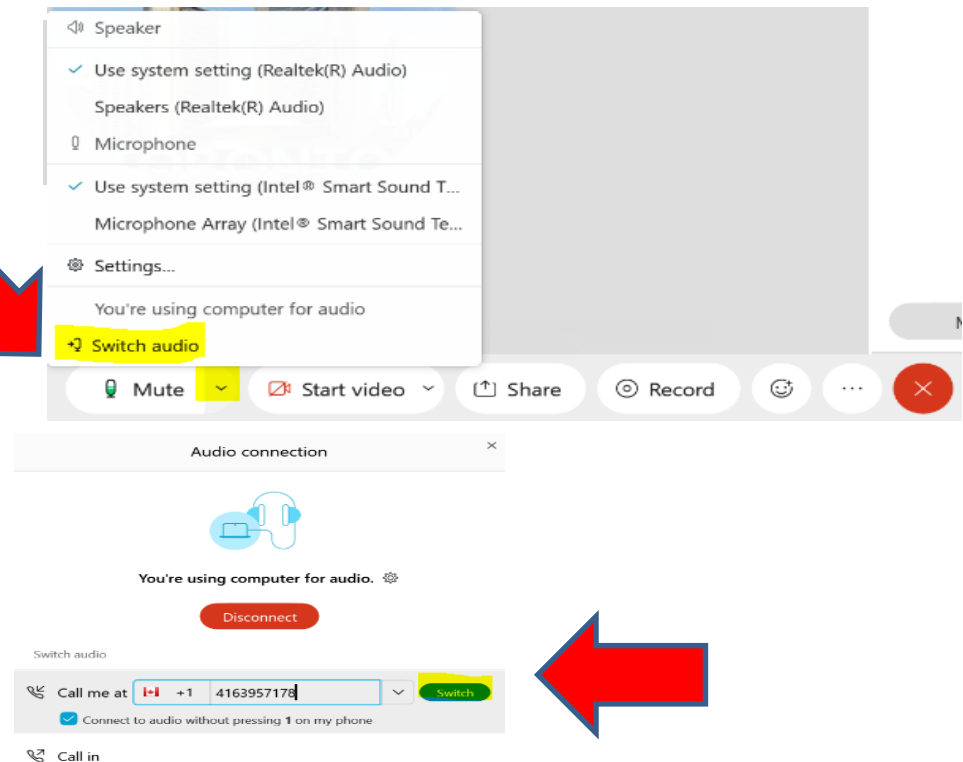
We want to hear from you.  
All questions are good questions!



# WebEx Audio Trouble?

## Webex can call you!

1. Click the **arrow** beside your mute button
2. Click **“Switch audio”**
3. Use **“Call me”** function
  - Enter your phone #
  - Webex will call your phone
  - No long distance charges



**Still not working? Try this!**

## **Call into the Meeting**

**Dial: 416-915-6530**

When prompted for a meeting number,  
enter **2460 101 7915**



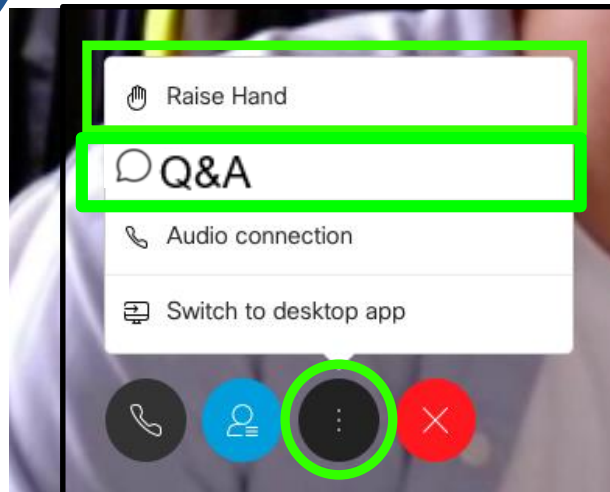
# Participating by computer

Raise your  
hand or  
type your  
question



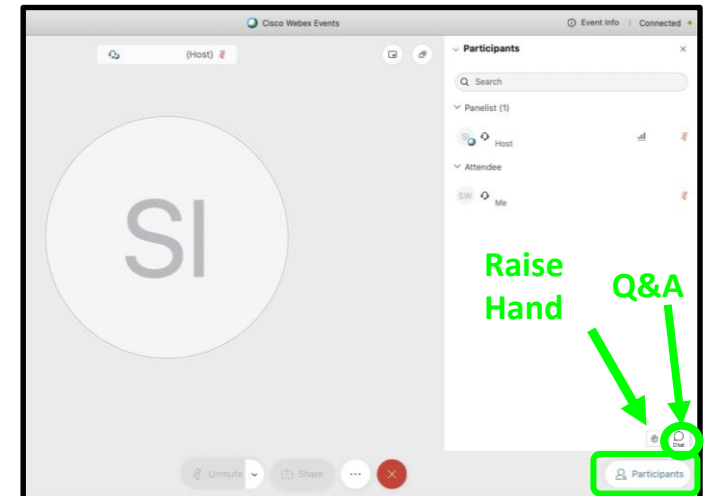
## Via the internet browser

Click the “...” button at the bottom of the video window and select “Raise Hand” or “Q&A”.



## Via the Webex App

Click the Participants button at the bottom of the video (the Participants panel will open to the right). Then click the “Raise Hand” or “Q&A” button at the bottom right.



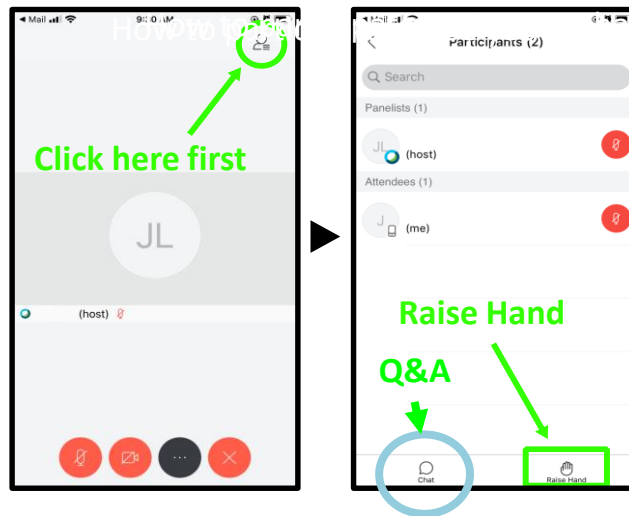
# Participating by Smart Phone or Tablet

Raise your  
hand or  
type your  
question



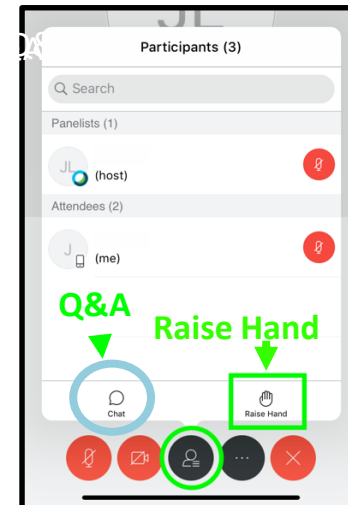
## For smartphones

Click the Participants panel button at the top right corner of the screen. Then click “Raise Hand” or “Q&A” at the bottom right of the screen.



## For tablets

Click the Participants panel button at the bottom of the screen. Then click the “Raise Hand” or “Q&A” button at the bottom right.



## Raising your hand by Phone



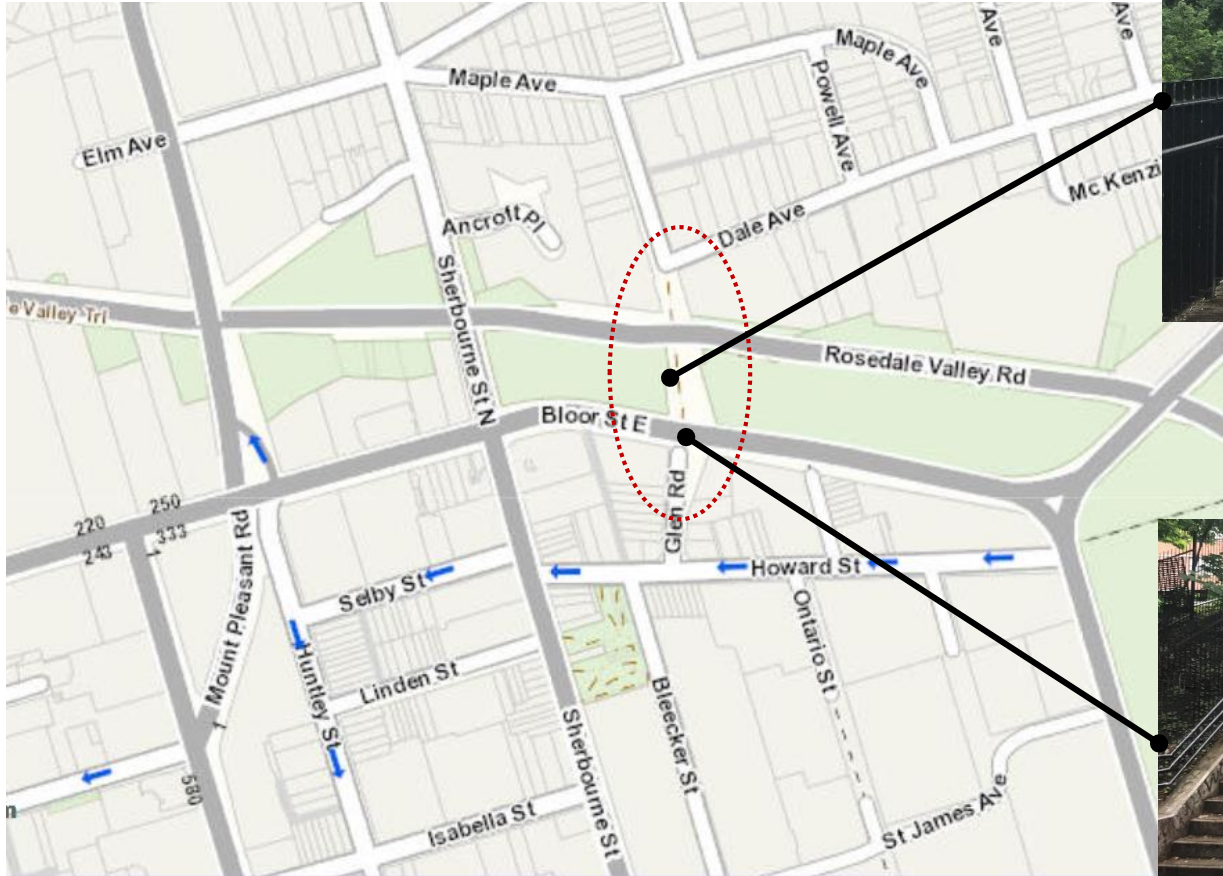
- To raise your hand virtually, **key in \*3.**
- The Host will see a hand up beside the last four digits of your phone number
  - During the Q&A period, the Host will unmute you and let you know that you can speak

# Introductions

## Project Team:

- Candice Chan, *Engineering and Construction Services*
- Violetta Savage, *Transportation Services*
- Michael Vieira, *Public Consultation Unit*
- Cassidy Ritz, *Transportation Services*
- Lara Tarlo, *City Planning (Urban Design)*
- Maaja Eichfuss-Clarke, *City Planning (Urban Design)*
- Ragini Dayal, *City Planning (Heritage Planning)*
- Catherine Dean, *Economic Development & Culture (Public Art)*
- Justin Chen, *Morrison Hershfield*
- Dan Rozanski, *Morrison Hershfield*
- Maria Goretti Lipa, *Morrison Hershfield*

# Background – Project Area



Glen Road Pedestrian Bridge  
(Morley Callaghan Footbridge)



Pedestrian Tunnel under  
Bloor St. East



# Background – Morley Callaghan Footbridge

A bridge has spanned across the Rosedale Valley Ravine for 130 years and today connects Rosedale to St. James Town. The existing bridge was built in the mid 1970s and is the 3<sup>rd</sup> known structure.

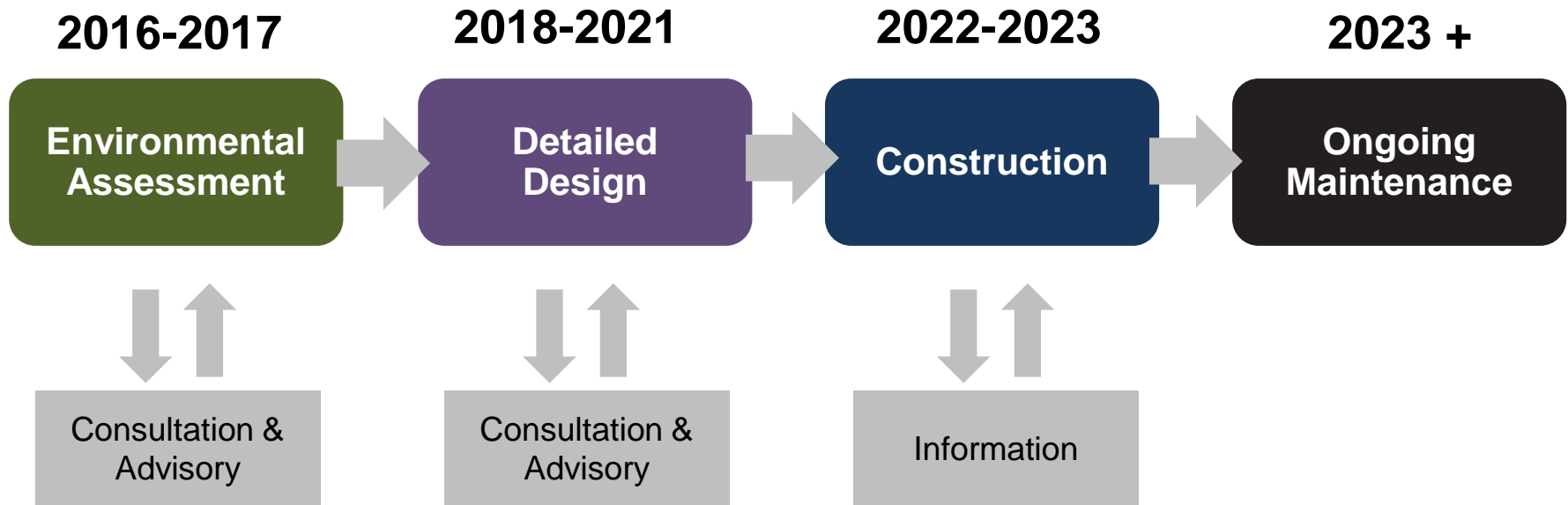


In 1992 the bridge name was formally changed from Glen Road Footbridge to the Morley Callaghan Footbridge.

- *For this project, we use “Glen Road Pedestrian Bridge” for the sake of local recognition.*

The bridge is listed on the City’s inventory of heritage bridges and is part of the South Rosedale Heritage Conservation District

# Background - Process





# Background – Environmental Assessment

The Municipal Class Environmental Assessment (EA), Schedule C, recommended the following:

- The bridge be replaced in the same location with a similar looking structure
- The tunnel be widened to the west and maintain its current alignment
- Identified areas for improved urban design and landscaping: north landing, south landing, and south of tunnel
- A need for a barrier free access to connect Bloor St. East to the bridge

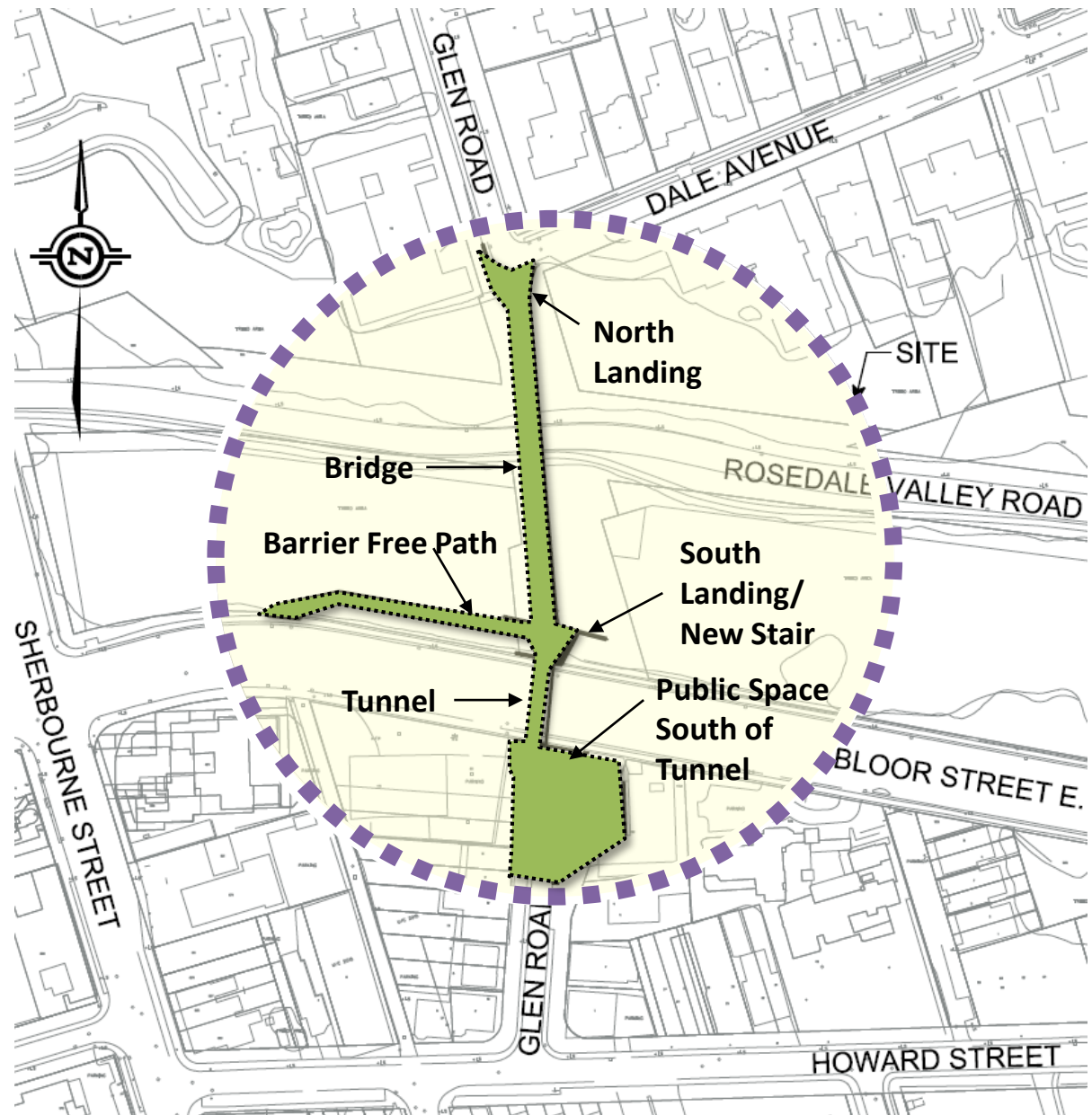
Consultation activities included:

- Stakeholder walk
- Two public events
- City of Toronto Design Review Panel feedback
- Engagement with utility companies and various City departments, agencies and technical experts

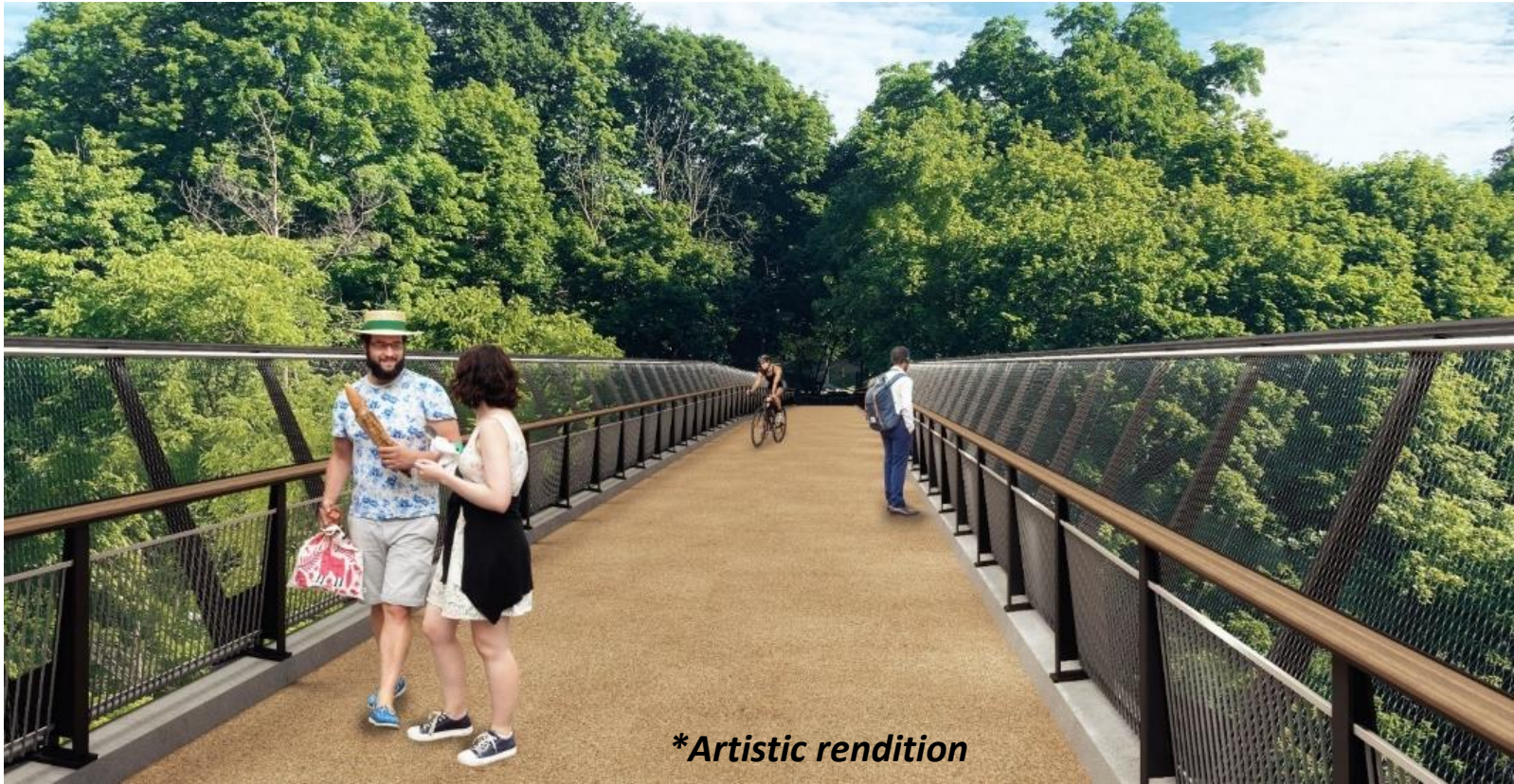
# Final Design - Project Scope

## Design Input:

- Stakeholder meetings
- Glen Road South public consultation meetings
- City of Toronto Design Review Panel
- Agency, utility companies, various City departments/technical experts



# Final Design - Bridge



*\*Artistic rendition*

- 4.8 m wide (increase of 1.1m) waterproof concrete deck
- Railings (steel post, aluminum pickets, wood hand rail) and suicide prevention barrier
- Enhanced LED lighting along railing and barrier
- Design maintains the slender deck and inclined legs (frame sides)

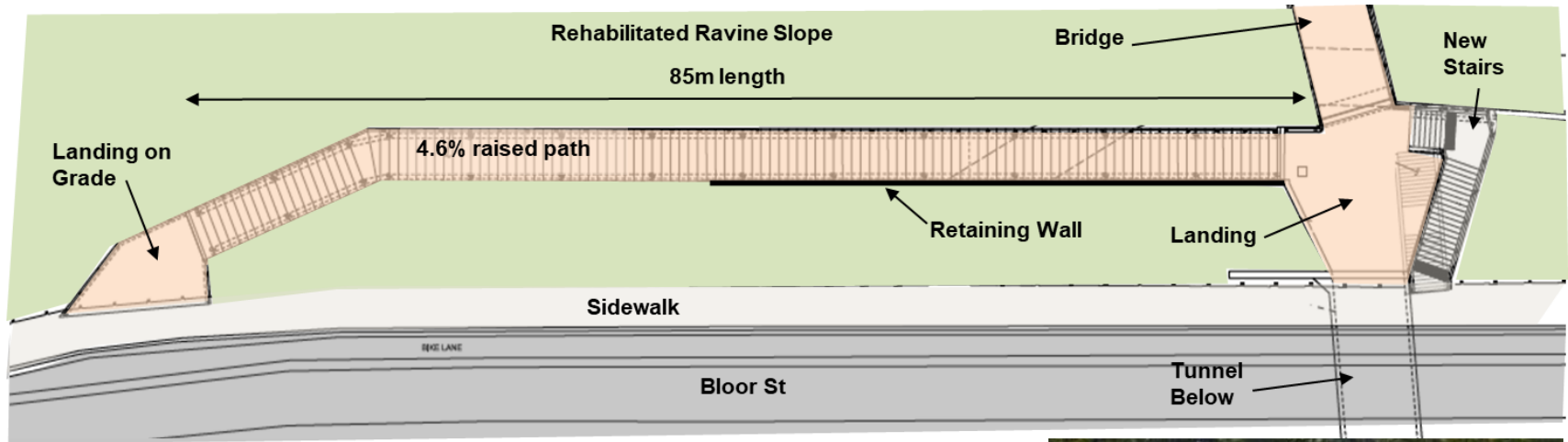


# Final Design – Tunnel and South Landing



- 4.8 m wide (increase of 1.8m), height maintained at 2.5 m
- Enhanced strip lighting in ceiling corners
- Expanded landing area
- New up-to-code staircase

# Final Design - Barrier Free Path and South Landing



- Elevated path with micropiles foundation and retaining walls (at southeast)
- Precast concrete decking
- 3.0m width, 4.6% grade
- LED lighting under handrail





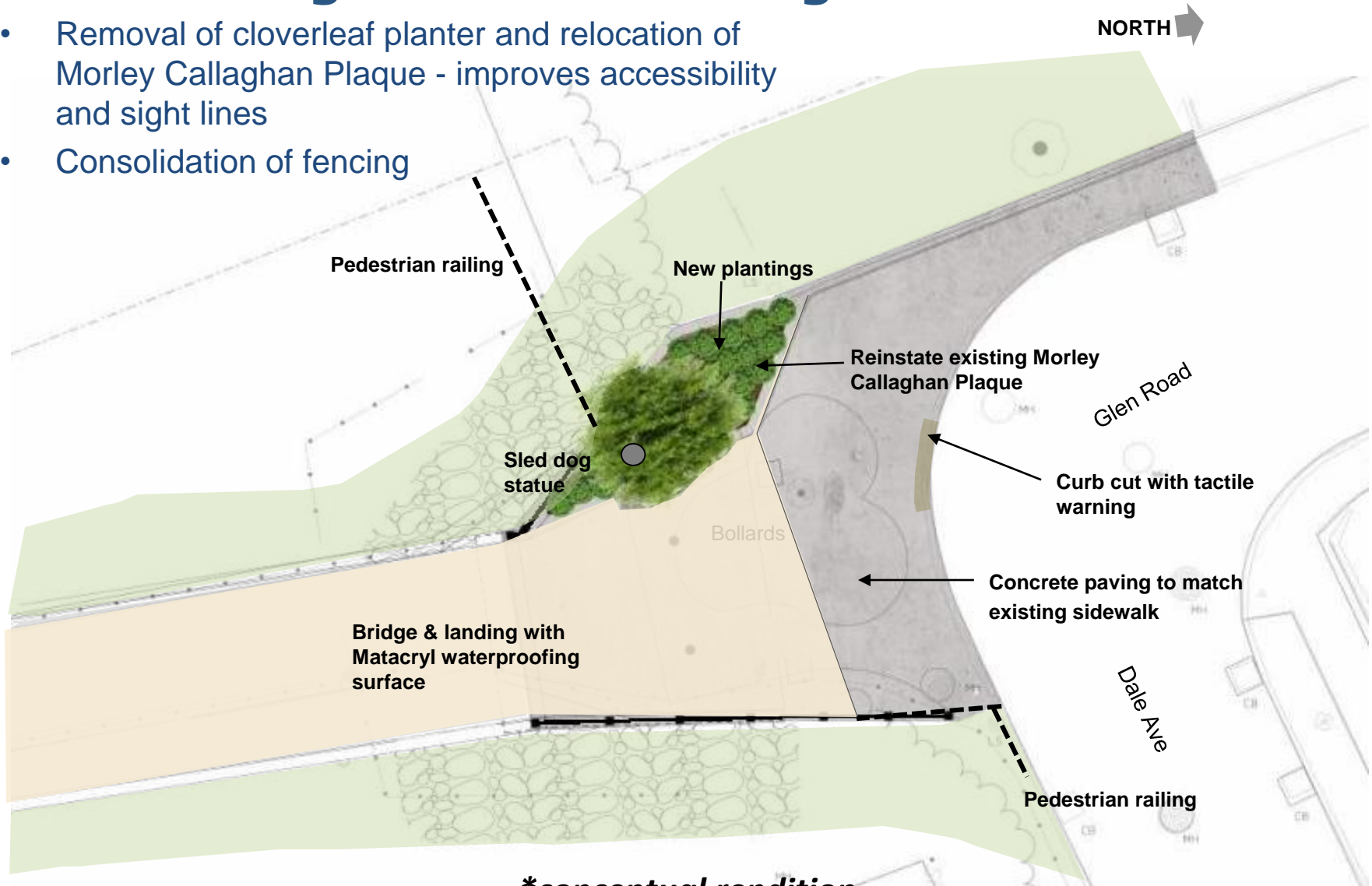
# Final Design - Glen Road Public Space (South of Tunnel)



- Expanded paved area in public space and extension of east sidewalk
- New planting area with retaining wall (east side), replacement of west retaining wall
- Provisions for CCTV security cameras and emergency intercom system
- Public art, bollards, and bike share station

# Final Design - North Landing

- Removal of cloverleaf planter and relocation of Morley Callaghan Plaque - improves accessibility and sight lines
- Consolidation of fencing



*\*conceptual rendition*



# Public Art

Economic Development & Culture (EDC) carried out a public art competition summer 2019. Inuit artist Couzyn Van Heuvelen's art concept was selected - centred around the theme of migration and travel, and referencing Inuit stone cut printmaking techniques and stone carving.



## Tunnel Interior

Images of birds cast into concrete wall reference inked stones during the printmaking process.



## Tunnel Exterior and Public Space

Metal birds silhouettes on the outer tunnel walls continue the shapes and colors used in Inuit printmaking. Cast sled dog bollards in plaza area.

# Construction – Construction Plan

## Bridge

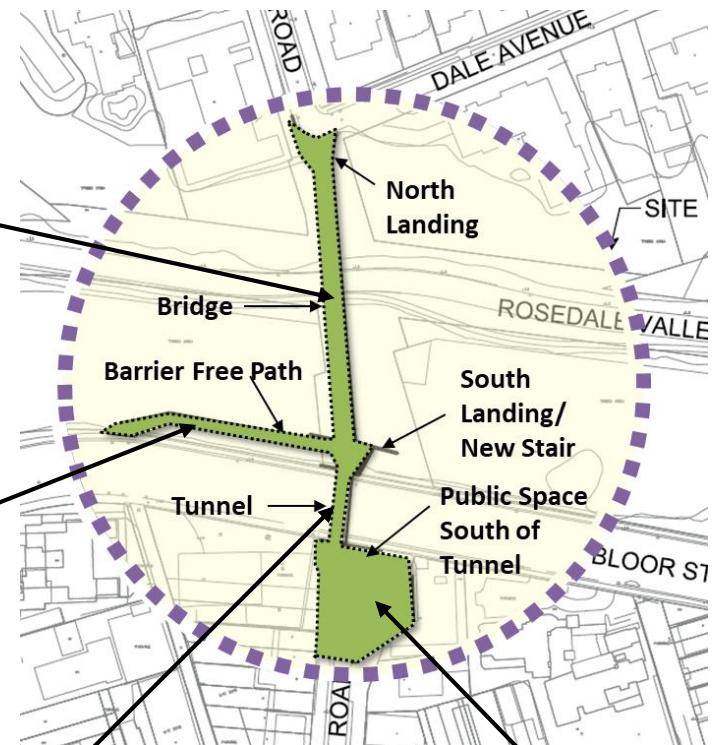
- Remove old bridge, including foundation
- New bridge construction – lift prefabricated steel components for bridge girders and legs from Rosedale Valley Road; construct the cast-in-place concrete deck

## Barrier Free Access Path

- Construct on the footprint of the temporary construction access road – utilizing precast concrete elements

## Tunnel under Bloor Street East

- Excavate Bloor Street in two stages, starting with the north half
- Remove and reconstruct concrete tunnel
- Backfill Bloor Street
- Repeat on south side of Bloor Street



Glen Road south streetscape work

# Construction Plan / Work Phases\*

## Pre-Phase – Early 2022

- Traffic control set-up
- Tree protection and removal, and erosion control measures

## Phase 1 – Spring 2022 to Fall 2022

- Remove entire bridge structure and construct new bridge
- Remove and reconstruct the north side of tunnel under Bloor Street East
- Install new electrical for lighting on the bridge
- Construct the new barrier free access path from north side of Bloor Street
- Streetscape work at north end of bridge

*~Winter shutdown~*

## Phase 2 – Spring 2023 to Fall 2023

- Remove and reconstruct the south side of tunnel under Bloor Street East
- Install new electrical for lighting in the tunnel
- Install new streetscaping elements in the public space south end of the tunnel.

\*Timeline subject to change

# Construction Access and Laydown Areas

## Staging and Laydown Areas

- Bloor Street East
  - Site trailers, construction equipment, site fencing, material storage
- Glen Road/Dale Avenue (north of bridge) and Glen Road (south of tunnel)
  - Site fencing, material storage, construction equipment
- Crane and other equipment will occupy Rosedale Valley Road during bridge removal and construction only.



## Construction Vehicle Access

- Off of Bloor Street East, with a temporary access road on north side
- Disturbed area will be the footprint for raised barrier free path
- Restoration following construction



# Construction – Potential Impacts and Mitigation

## Work Hours

- Monday to Friday 7 a.m. to 7 p.m., Saturday 9 a.m. to 7 p.m.
- Saturday & Sunday work for bridge removal and replacement.\*\*

*\*\*Additional Sunday & Statutory holiday work may be required – Notification will be provided.*

- **Noise:** The contractor is responsible to minimize construction related noise.
  - Higher levels of noise can be anticipated during bridge removal and replacement and concrete breaking work.
- **Dust:** Contractor is responsible for minimizing dust in the work zone.
- **Truck traffic:** A full traffic management plan is currently being developed by the contractor and will be in place to mitigate impacts to local streets.
- **Parking:** Parking in the active work zone is not permitted; minor loss of parking on Bloor St East and at Glen Rd/Dale Ave

# Pedestrian Access

## Bridge and Tunnel

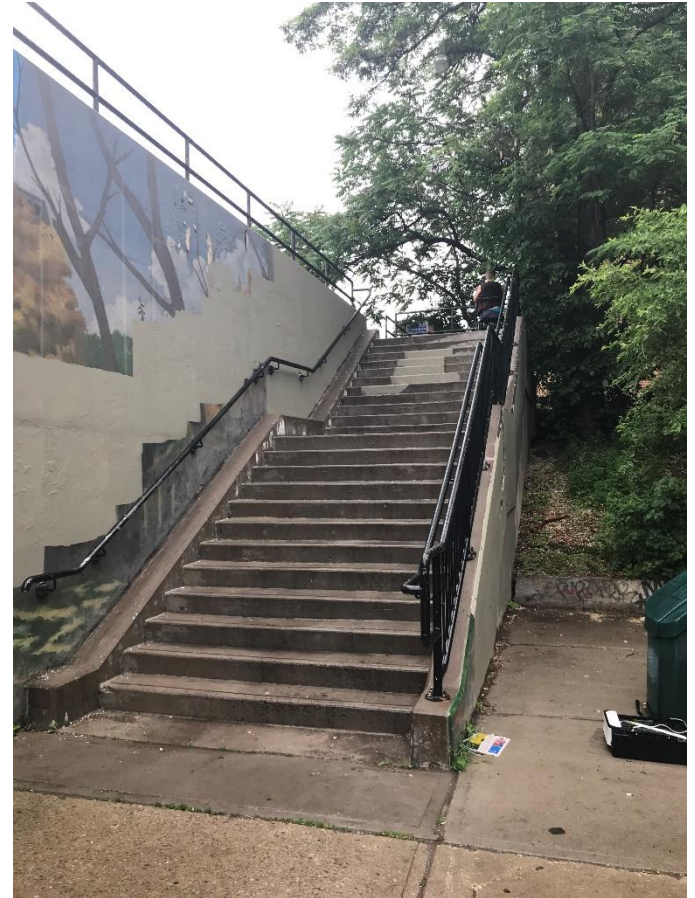
- Closed for the full duration of construction.
- Pedestrians will access Bloor Street East via Sherbourne Street.

## Bloor Street Stairs to Glen Road South

- No access to Glen Road from Bloor during the entire Phase 2 (2023)

## TTC Sherbourne subway entrance on Glen Road:

- The subway entrance will remain open for the duration of the project. Overnight or short day closures during the Glen Road south public space reconstruction in 2023 may be required.
- During Phase 2 (2023), due to stair closure, there will be no access from Bloor Street East.



# Road and Traffic Impacts

## Bloor Street East:

- Lane closures required during two-staged tunnel reconstruction (Phases 1 & 2)
- One shared travel lane maintained in each direction for people driving and cycling
- Existing separated bike lanes will be temporarily removed and restored upon work completion
- Full pedestrian access (east-west) will be maintained throughout construction





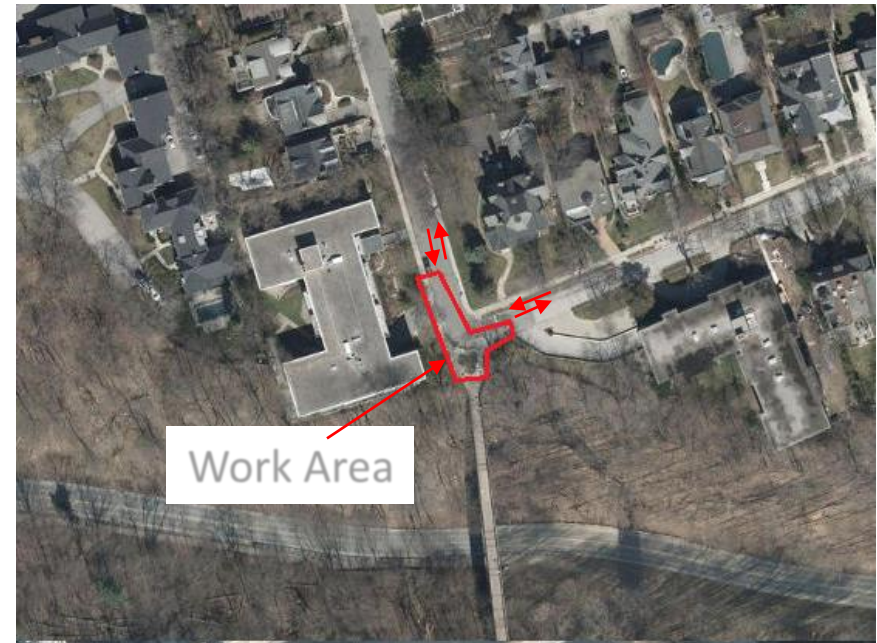
# Road and Traffic Impacts (Continued)

## Rosedale Valley Road:

- Full road closure from Park Road to Bayview Avenue during several weekends for the bridge removal and replacement only; no pedestrian access on south sidewalk
- Pedestrian detour (signage) will be provided during full road closure

## Glen Road / Dale Avenue:

- One bi-directional travel lane immediately north of bridge maintained during Phase 1
- Traffic control persons on-site to ensure safety
- North sidewalk maintained during construction



# Tree Removals and Restoration

- Due to the close proximity to the new infrastructure, 127 City trees will need to be removed from the Rosedale Valley ravine and the City's boulevard to facilitate the work on this project.
- The majority of these trees are being removed as part of the construction access road into the valley. This area will be the location of the permanent barrier-free access path.
- Tree protection barriers will be installed in the construction zone.
- Approximately 400 trees and 1,000 shrubs will be replanted on site following construction.



***\*Tree protection barrier***

The City's Urban Forestry Division and Toronto Region Conservation Authority (TRCA) were consulted on the required tree removals and replacement plantings.

# Construction Updates and Communication

- Email updates (subscription through the project web page)
- Mailed updates / notices (at or before key project milestones)
- Regular updates on project web page
- Site signage (directional, detours etc.)
- Social media: **@TO\_Transport** and **@cityoftoronto**



Project web page: [toronto.ca/glen-rd-ped-bridge](https://toronto.ca/glen-rd-ped-bridge)

# Annual Bridge Inspection

- The bridge is inspected annually. As the bridge is being removed in Spring 2022, a structural inspection this year is necessary.
- The inspection is scheduled for **this Saturday, November 20<sup>th</sup>** (rain date: Sunday, November 21<sup>st</sup>) from 8 a.m. to 8 p.m.
- Inspection crews will **close Rosedale Valley Road between Park Road and Bayview Avenue** to complete the inspection. The closures are being communicated via signage (already in place).
- If structural concerns require bridge closure before the removal in Spring 2022, signage will be posted.



# Thank You

If you have any questions or concerns during construction please contact the Field Ambassador for the Glen Road Pedestrian and Bridge project:

## Contact:

Maria Lippa

Field Ambassador

416-495-4254

[GlenRdPedBridgeTunnel@morrisonhershfield.com](mailto:GlenRdPedBridgeTunnel@morrisonhershfield.com)

Project web page: [toronto.ca/glen-rd-ped-bridge](https://toronto.ca/glen-rd-ped-bridge)

# Question & Answer Period

## How to Participate

**By Phone** - To raise or lower your hand virtually, **key in \*3.**

**By Computer** - Click the Participants button at the bottom of the video (the Participants panel will open to the right). Then click the "Raise Hand" or "Q&A" button at the bottom right.

**For smartphones** - Click the Participants panel button at the top right corner of the screen. Then click "Raise Hand" or "Q&A" at the bottom right of the screen.