



# The **Esplanade & Mill Street** **Connection Project**

Phase 1  
is now open!



# Safer streets in the Distillery, Canary, and St. Lawrence Market neighbourhoods

The Esplanade and Mill Street are two important streets in the east part of downtown Toronto. They connect people to iconic destinations like the St. Lawrence Market and Distillery District, as well as parks such as Corktown Common and David Crombie Park. Parliament Square Park is a vital pedestrian connection between the two streets.

The City of Toronto is changing the way people move through and experience The Esplanade and Mill Street.



## PROJECT GOALS



Improve safety for everyone



Make walking, cycling and taking transit more attractive



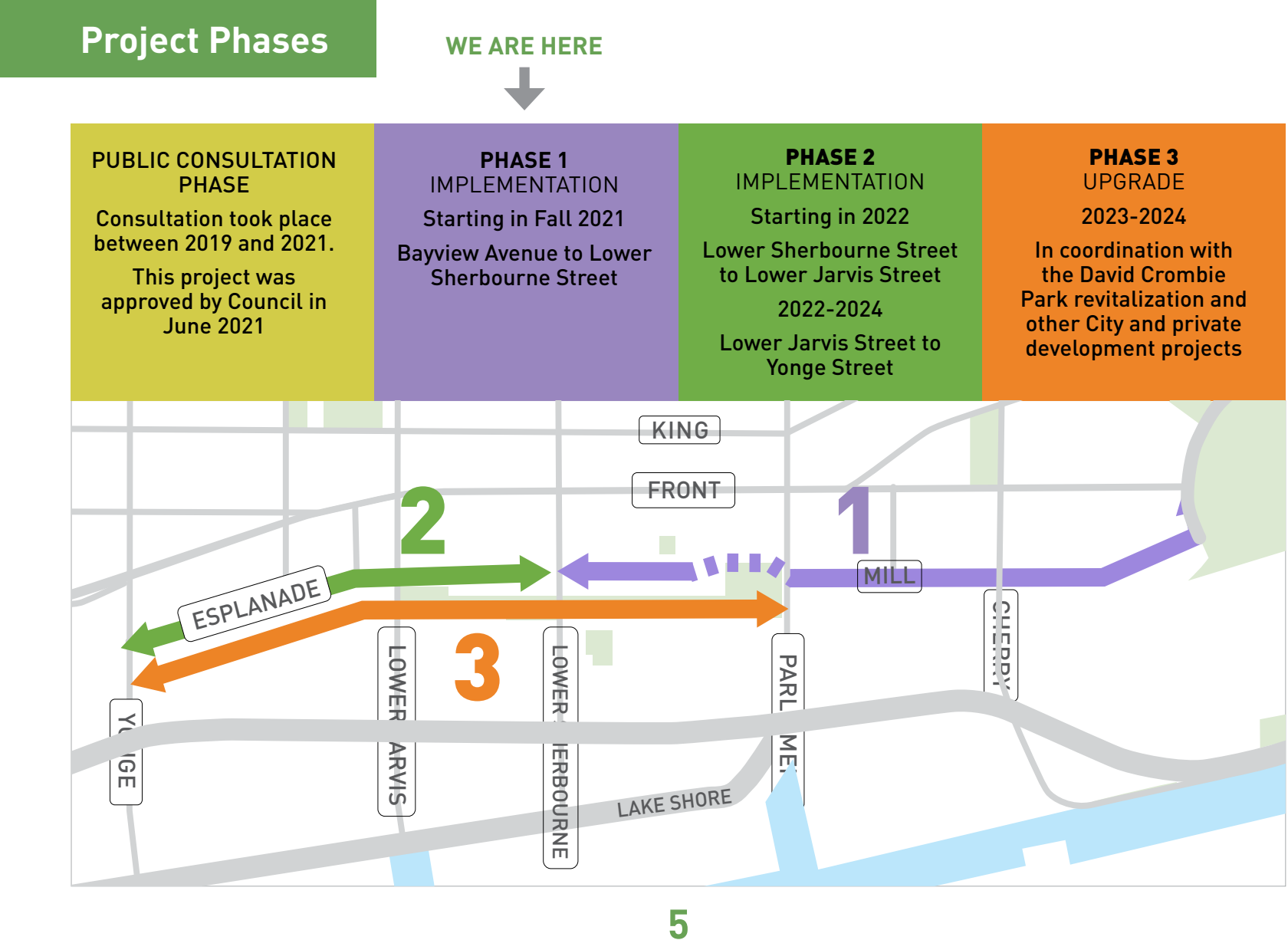
Maintain access to local and citywide destinations



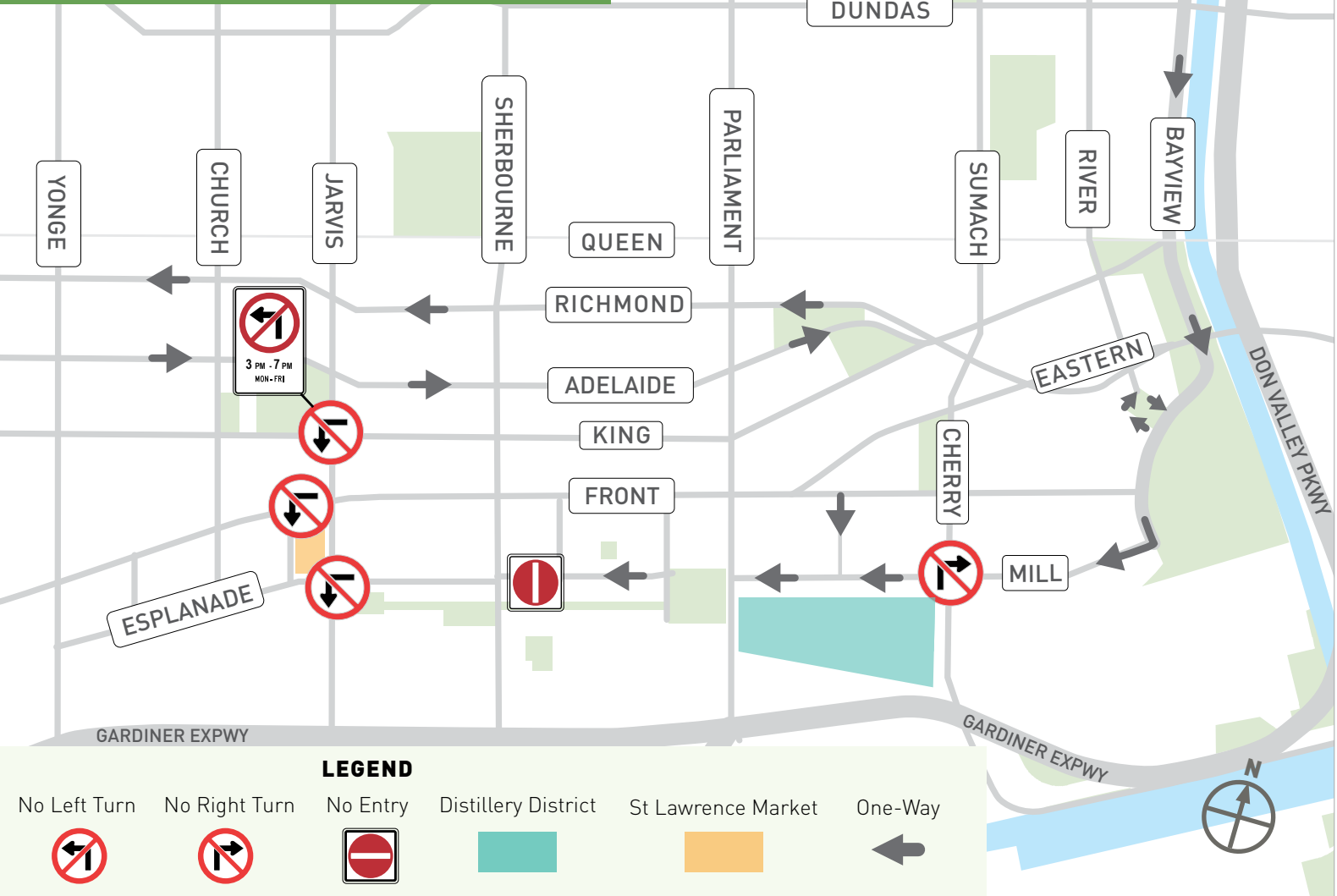


**Bicycle trail connecting Esplanade and Mill**

The City of Toronto is planning to install a bicycle trail in the former Green P parking lot north of Parliament Square Park to connect the cycle tracks on The Esplanade and Mill Street. Work is planned to commence following archaeological assessment by Metrolinx for the Ontario Line.



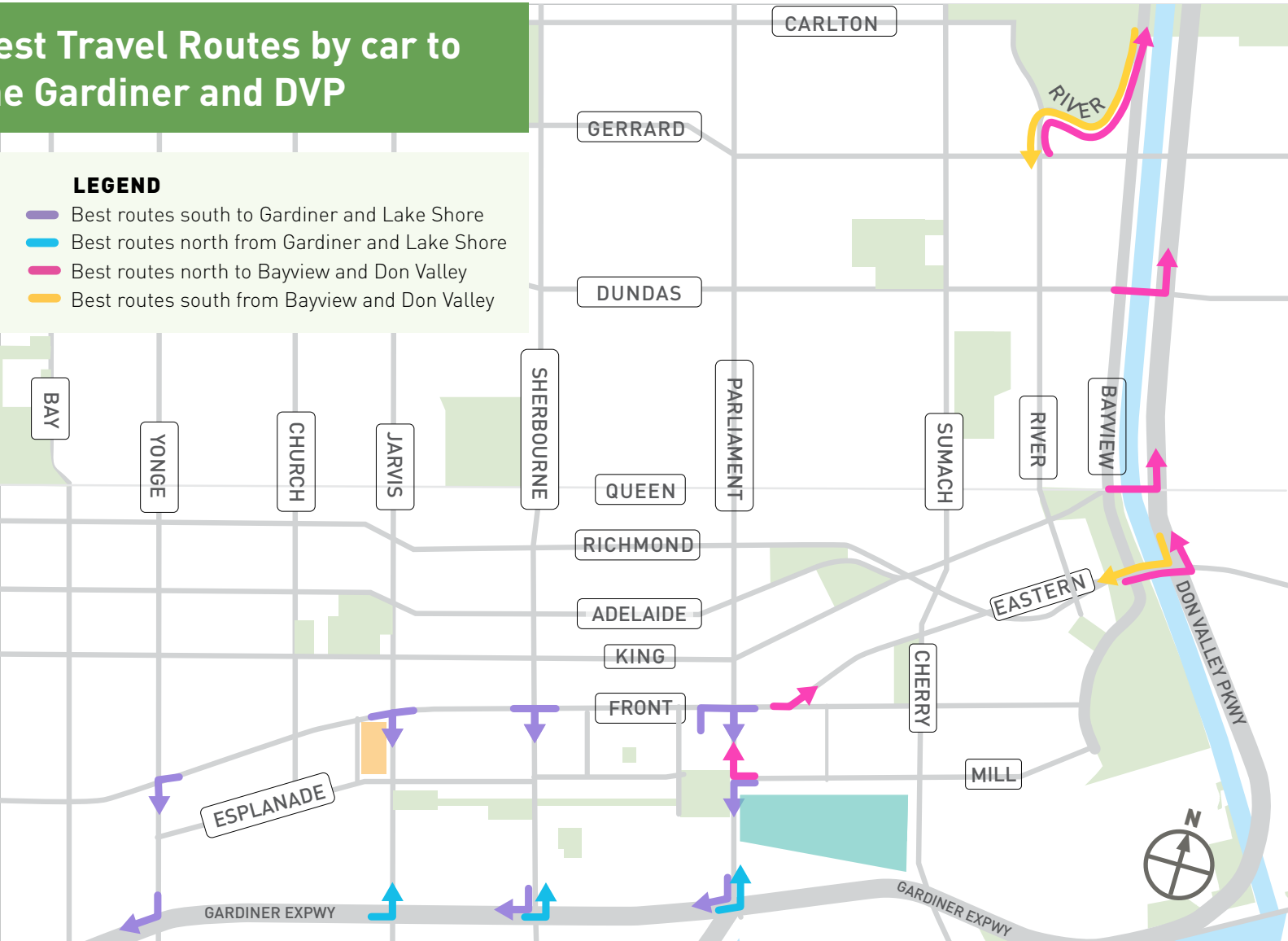
Turn Restrictions & No Entry



\* Bikes and buses are exempt from these restrictions

Best Travel Routes by car to the Gardiner and DVP

- LEGEND**
- Best routes south to Gardiner and Lake Shore
  - Best routes north from Gardiner and Lake Shore
  - Best routes north to Bayview and Don Valley
  - Best routes south from Bayview and Don Valley



# The Esplanade Sherbourne to Parliament



New turn restrictions for drivers and dedicated bicycle waiting areas at Lower Sherbourne Street are intended to improve safety and predictability.



The block between Lower Sherbourne Street and Princess Street is “No Entry” to prioritize the 121 TTC Bus, to reduce westbound left-turns across the cycle track and crosswalk at the turns at the Lower Sherbourne Street intersection, and prevent traffic infiltration on Scadding Avenue and Princess Street



No Stopping Zone



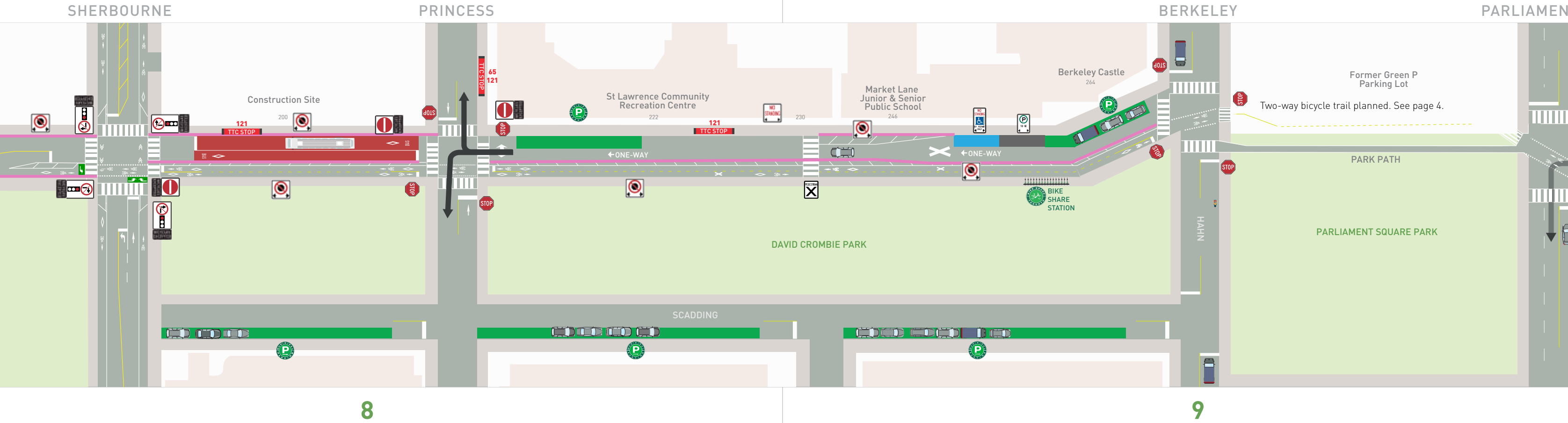
Accessible Loading Zone



10 minute parking



A two-way cycle track on the south side of The Esplanade and Mill Street allows for curbside activity on some blocks such as parking and loading.



# Mill Street Parliament to Cherry

- 

Signalization changes with new bike signal heads.
- 

10 minute parking
- 

15 minute parking
- 

No standing - allows passenger pick-up and drop-off only
- 

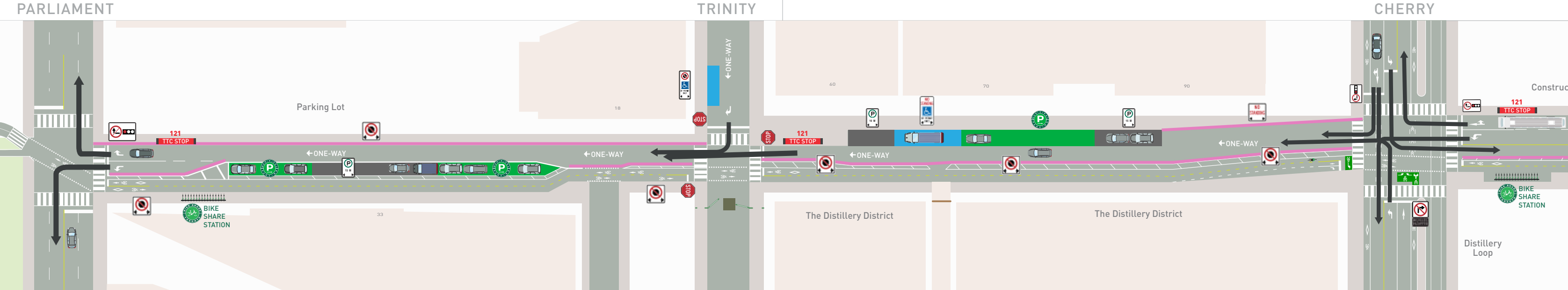
No Stopping Zone
- 

Accessible Loading Zone
- 

A two-way cycle track on the south side of Mill Street allows for curbside activity.
- 

New planters between Trinity and Cherry in the cycle track buffer add year round greening and neighbourhood beauty.
- 

Mill Street between Parliament Street and Cherry Street is converted to one-way westbound for vehicles to make space for the cycle track and maintain bus access.



# Mill Street Cherry to Bayview



Turning cyclists should use the appropriate green boxes and wait for their signal to proceed.



People cycling north on Cherry Street who want to turn right onto Mill Street may make a two-stage turn using the green box.



The 121 Fort York-Esplanade now operates east of Union Station and has been renamed to 121 Esplanade-River.



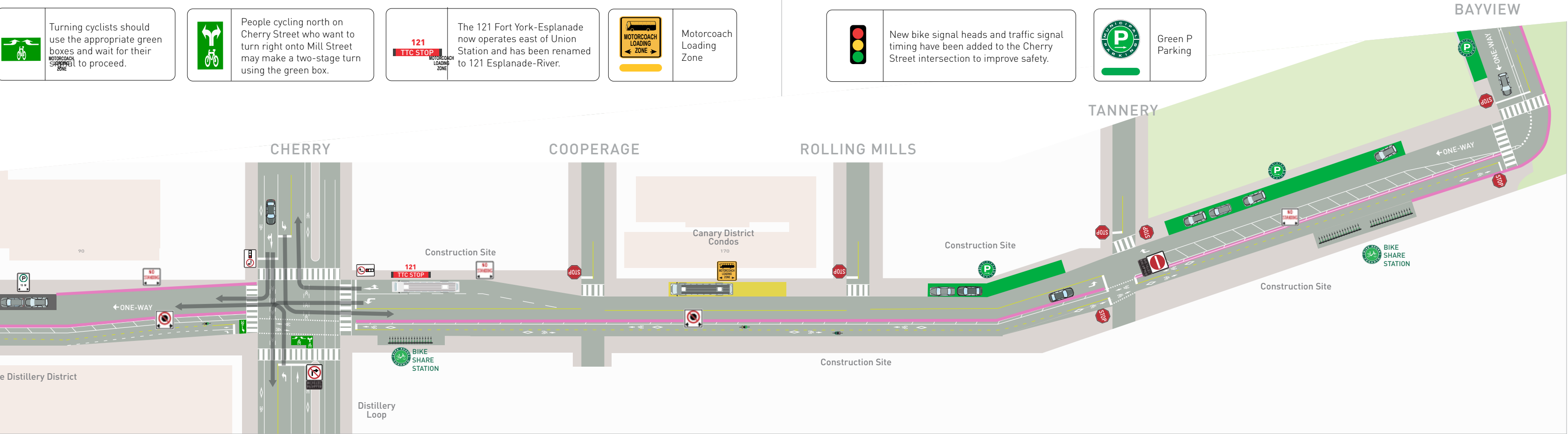
Motorcoach Loading Zone



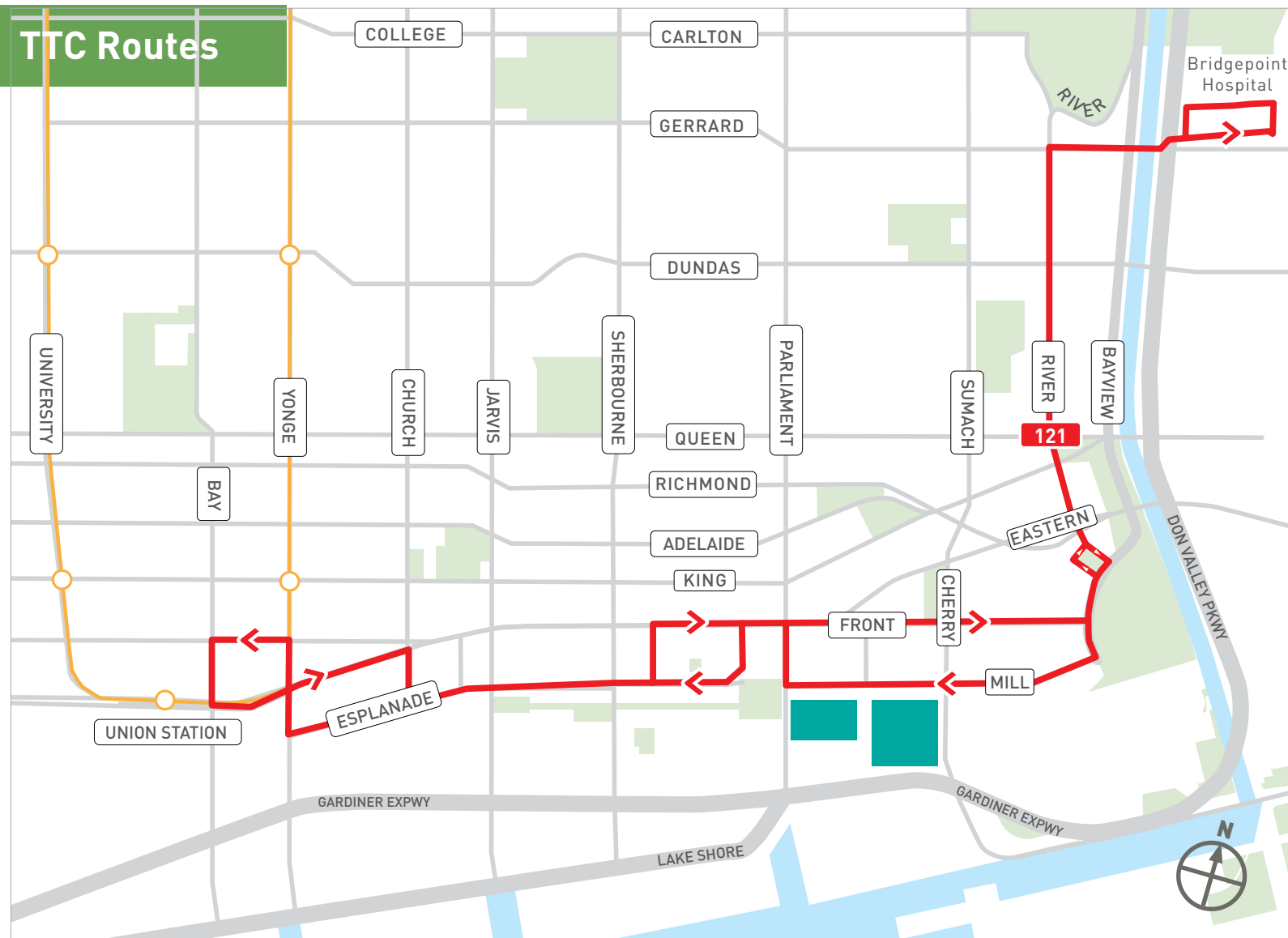
New bike signal heads and traffic signal timing have been added to the Cherry Street intersection to improve safety.



Green P Parking







## Changes to TTC bus route 121 Esplanade-River

The 121 Fort York-Esplanade now operates east of Union Station and has been renamed to 121 Esplanade-River. TTC service has been removed along Front Street West, Blue Jays Way and Fort York Boulevard. These changes have been made to expand bus service to growing neighbourhoods. New developments around the Distillery and in Regent Park are expected to increase travel demand in these areas, and the new 121 Esplanade-River provides a convenient connection between the downtown neighbourhoods.

121 Esplanade-River operates one-way through certain areas of the St Lawrence and Distillery neighbourhoods to align with the City of Toronto's street network changes. The route extends through Corktown and Regent Park via River Street, and connect to Bridgepoint Hospital.

To learn more about these and other services changes being made as part of the 2021 Annual Service Plan, visit [ttc.ca](https://www.ttc.ca)





# What's next?

Phase 2 is planned to begin in 2022 with the western extension of The Esplanade cycle tracks. Phase 3 is planned to begin in 2023 or 2024, and include permanent upgrades such as raised cycle tracks and additional safety benefits.

Monitoring and evaluation will be conducted after each phase of implementation.

[toronto.ca/esplanademill](https://toronto.ca/esplanademill)  
@TO\_Cycling

