

New Park at 261 Nairn Ave.

Public Meeting
November 30, 2021



Land Acknowledgement

We acknowledge the land we are meeting on is the traditional territory of many nations including the Mississaugas of the Credit, the Anishnabeg, the Chippewa, the Haudenosaunee and the Wendat peoples and is now home to many diverse First Nations, Inuit and Métis peoples. We also acknowledge that Toronto is covered by Treaty 13 with the Mississaugas of the Credit.



Meeting Objective

Let's Create a New Park!

Tonight we are presenting two concept designs for the new park at 261 Nairn Avenue. We want to:

- Provide a general update.
- Present concepts and gather ideas/feedback.
- Listen to the community's perspectives and priorities regarding this space.





Webex Tips, Meeting Goals & Introductions



Presentation

- Project Background
- Engagement
- Concept Plans



Questions and Discussion



Next Steps



Tips of Engagement for a Successful Virtual Meeting



All participants have been muted for this meeting.



All cameras have been **turned off** for this meeting.



Use the Q and A feature, Or click the hand icon, beside your name from the participants list on the right.




Computer audio issues? Use your cell-phone for audio by calling 416-915-6530 and enter meeting number 177 876 3035. Press *3 to ask a question.

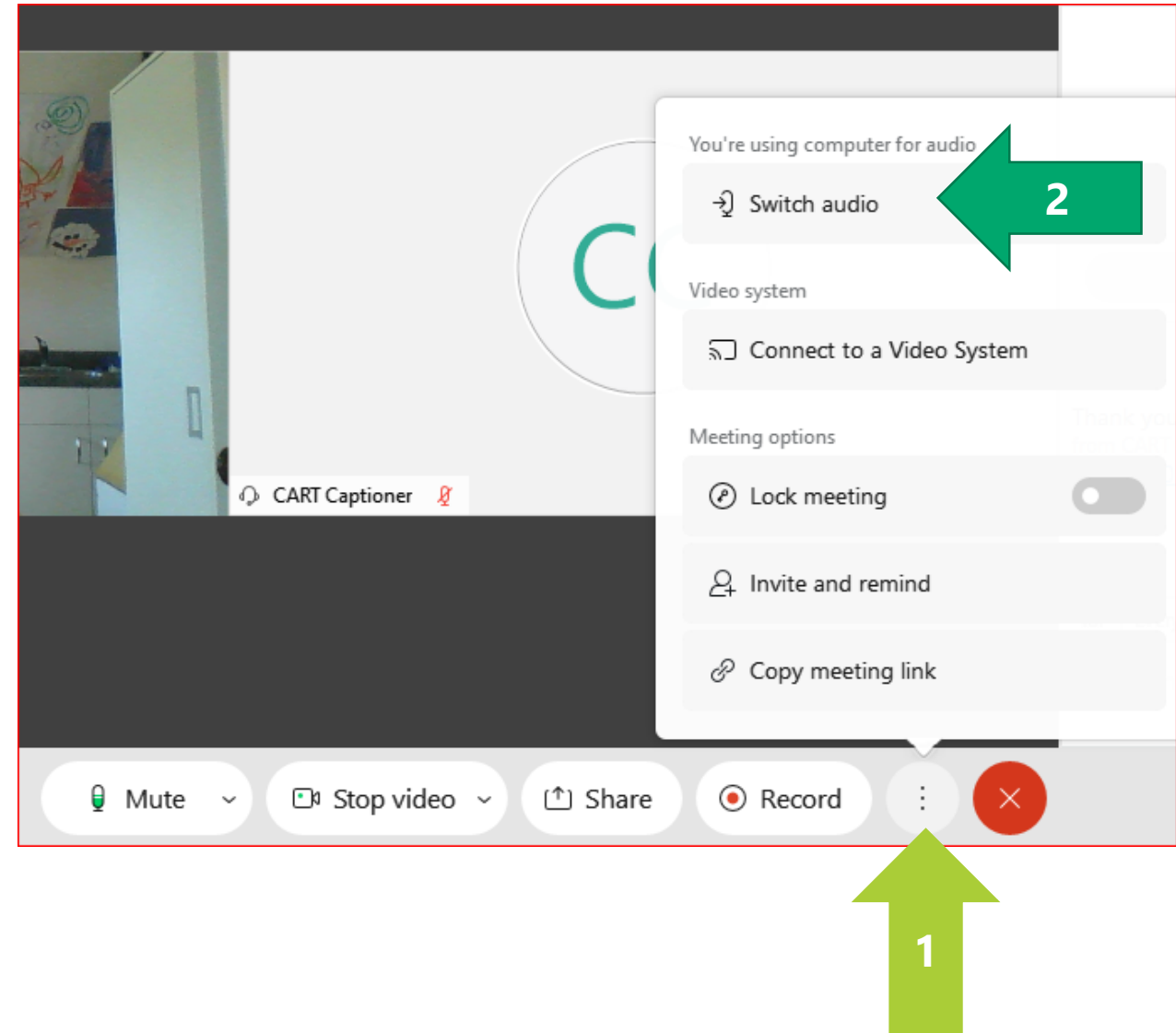


You will be given an opportunity to **ask panelists questions directly** during the Q&A.



Webex Audio Trouble?

1. Click the **More Options** button at the bottom of the screen 
2. Click **Switch Audio**
3. Use the **Call me at** function
 - a) Enter your phone number
 - b) Webex will call your phone (no long distance charges)



Project Team

CITY OF TORONTO

Parks Forestry and Recreation

Lara Herald

Senior Project Coordinator

Pablo Muñoz

Senior Public Consultation Coordinator

Alex Lavasidis

Senior Public Consultation Coordinator

DESIGN TEAM

Thinc Design

Nick Taylor

Landscape Architect

Emil Kovacevic

Landscape Designer



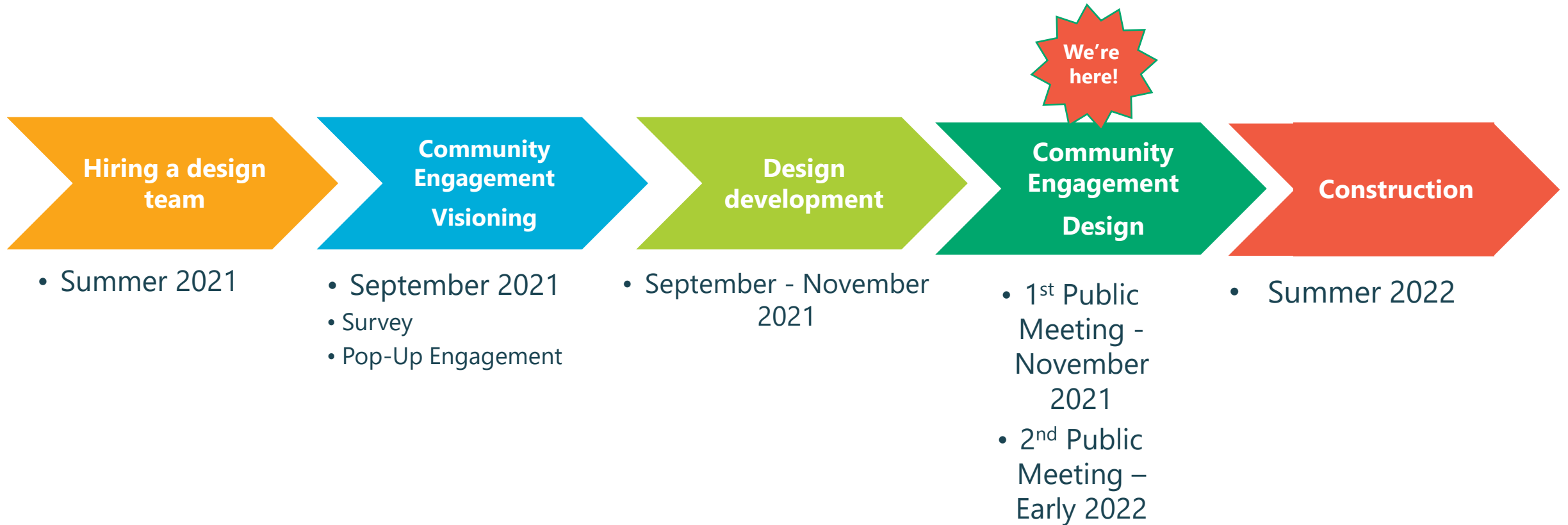
Opening Remarks

Deputy Mayor Ana Bailão
City of Toronto, Ward 9



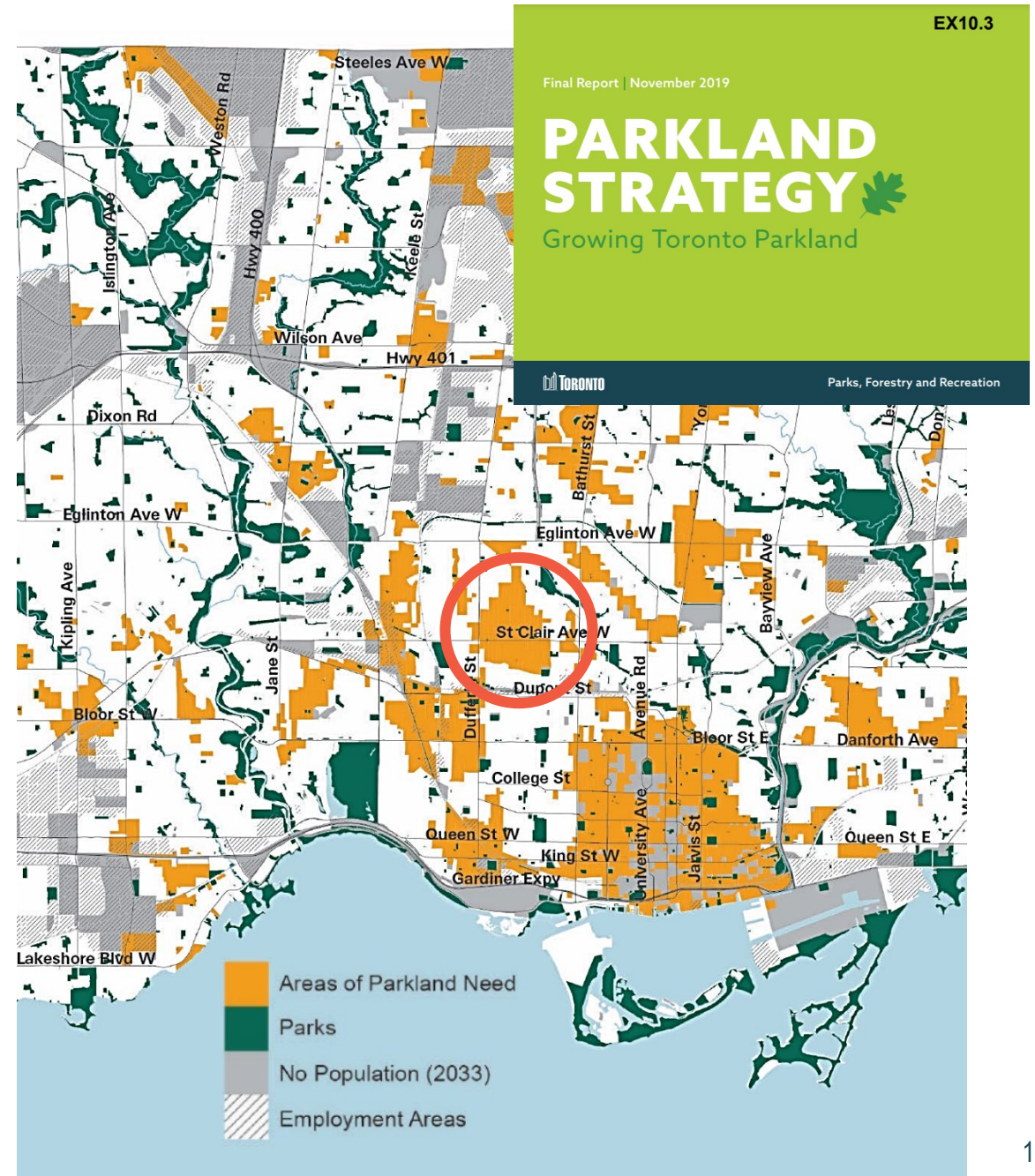
Background

Project Timeline



Background

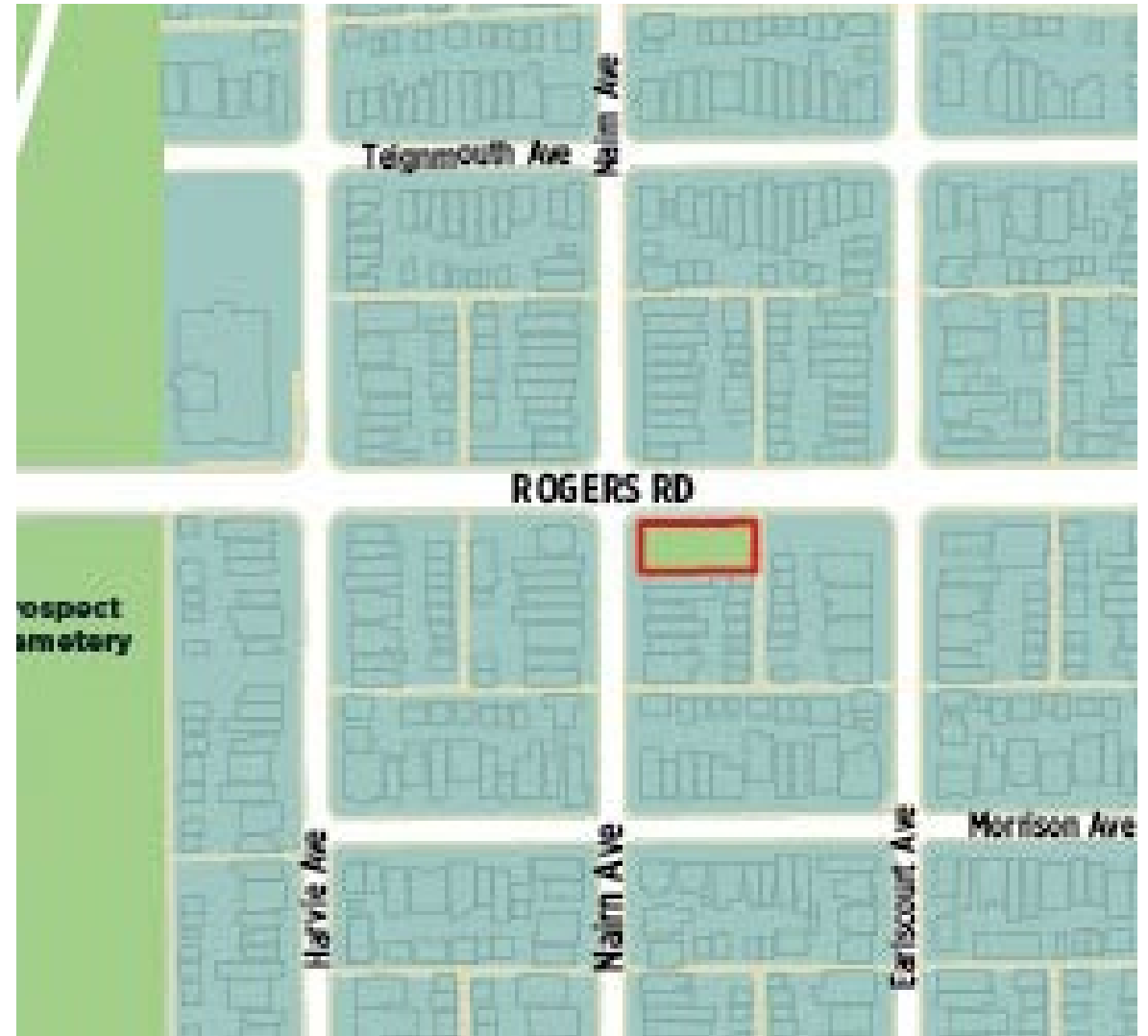
- Toronto's [Parkland Strategy](#) identified an area centred on the Oakwood Avenue and St. Clair Avenue West intersection as an **"Area of Parkland Need"**.
- "Areas of Parkland Need" are high-need areas, identified based on **compounding factors** such as low park supply, low income, and high growth, where the **City will prioritize parks planning and the creation of new parks**.



Background

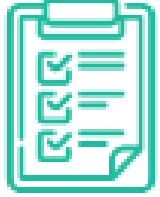
The new park at 261 Nairn Ave. is located at the southeast corner of Rogers Road and Nairn Avenue in [Ward 9 – Davenport](#). The City recently acquired the property, which was previously a commercial/residential building, and converted it to parkland. The new park will be designed using feedback from the community and may include the following features:

- A playground with accessible play equipment
- Accessible pathways and seating
- A social gathering space
- Shade features
- Plantings and/or a small garden
- Fencing



Engagement

Engagement



Survey

Sept 10th to Sept 26th

1100 responses



Pop-Up

September 11th

About 300
participants

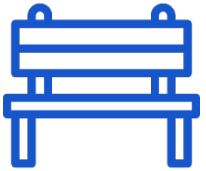


What we heard

The community would like this park to be a space for relaxing and playing!

	Count	% of responses	%
Relax	741	<div></div>	65%
Use a children's play area	656	<div></div>	57%
Sit and/or eat	572	<div></div>	50%
Enjoy and observe planting areas	533	<div></div>	47%
Meet people/ gather with others	470	<div></div>	41%
Spend time with others	389	<div></div>	34%
Games (i.e., chess, ping pong, etc.)	325	<div></div>	28%
Spend time alone	277	<div></div>	24%

Specific Features



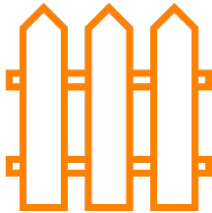
Seating



Trees



Shade



Fence

	Average	Count	% of responses			
Seating areas (i.e. benches, seatwall)	16%	1.1k	63%	28%	7%	
Trees	20%	1.1k	61%	24%	12%	4%
Shade feature (i.e. small shade structure)	20%	1.1k	59%	25%	12%	4%
Fence	31%	1.1k	53%	17%	14%	16%
Accessible pathways	32%	1.1k	42%	32%	14%	12%
Drinking fountain/bottle filler	34%	1.1k	44%	25%	17%	15%
Junior playground equipment	39%	1.1k	45%	17%	15%	23%
Open grass/lawn area	40%	1.1k	31%	30%	26%	13%
Picnic areas (i.e. tables)	46%	1.1k	27%	26%	27%	19%
Pollinator garden	47%	1.1k	31%	23%	21%	25%
Senior playground equipment	47%	1.1k	31%	22%	22%	25%

Additional Comments



Pollinator Garden



Concerns with Cars



Requests for an OLA

Doesn't meet *People, Dogs and Parks – Off-leash Policy* criteria.

- **Size**
- **Proximity to playground**

Opportunities to expand and enhance off leash areas are being considered in the neighbourhood.

Concept Plans



EXISTING CONDITIONS - NAIRN PARK

NAIRN PARK

CONCEPTS

NOVEMBER 30TH, 2021

KEY FEATURES OF CONCEPT DESIGNS:

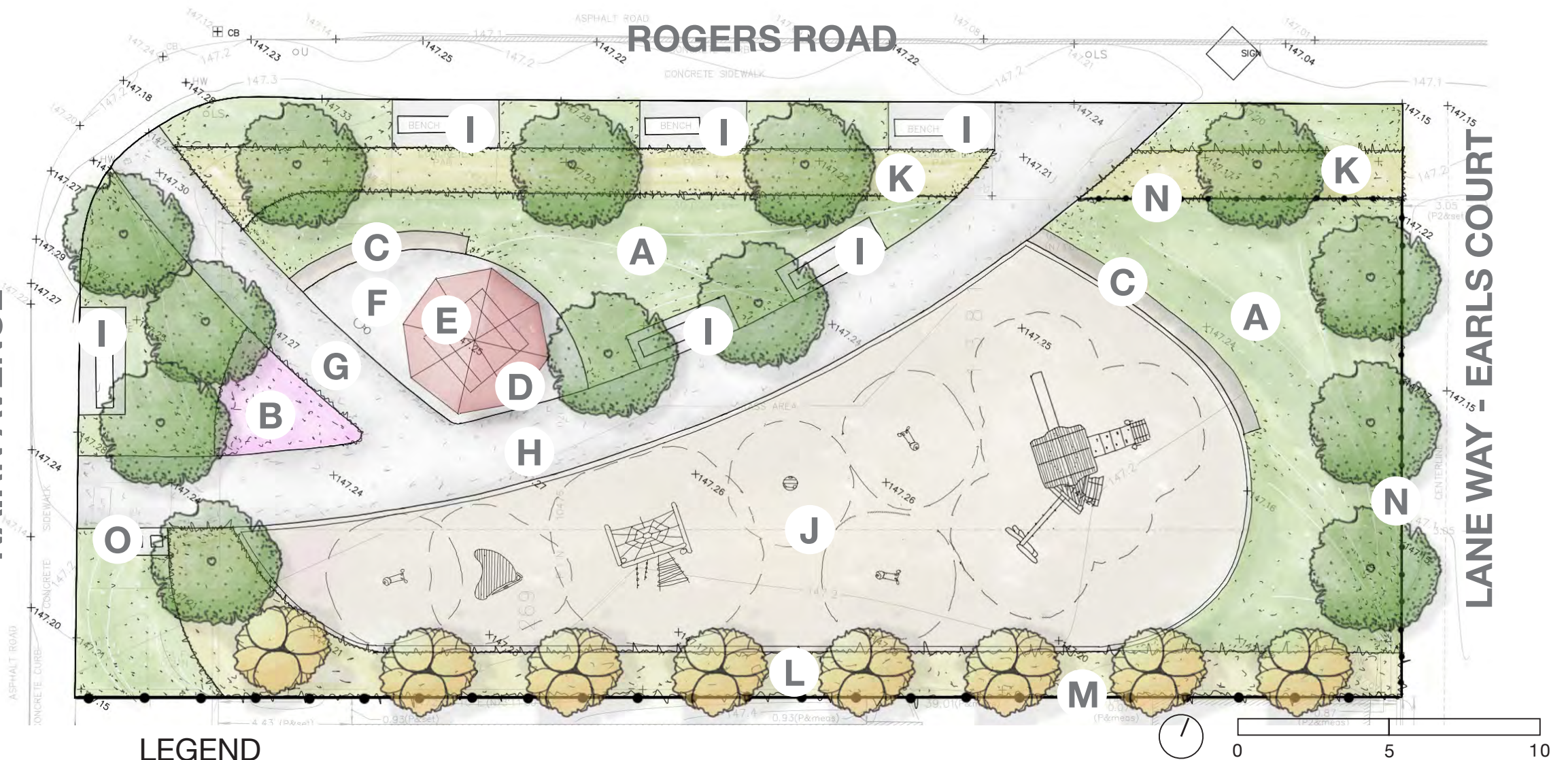
- Junior/Senior Playground (with accessible equipment)
- Accessible Pathways & Seating
- Social Gathering Space
- Shade Structure
- Site Furnishings
- Open Lawn
- Deciduous Shade Trees
- Buffer Planting
- Community Perennial Garden
- Fencing

CONCEPT A

NAIRN AVENUE

ROGERS ROAD

LANE WAY - EARLS COURT



LEGEND

- A** open lawn
- B** community perennial planting bed
- C** armourstone seat wall
- D** shade structure
- E** accessible picnic table

- F** water fountain/bottle filler
- G** 2.1m wide concrete walkway
- H** 2.4m wide concrete walkway
- I** bench
- J** play area with cedar weave mulch surface

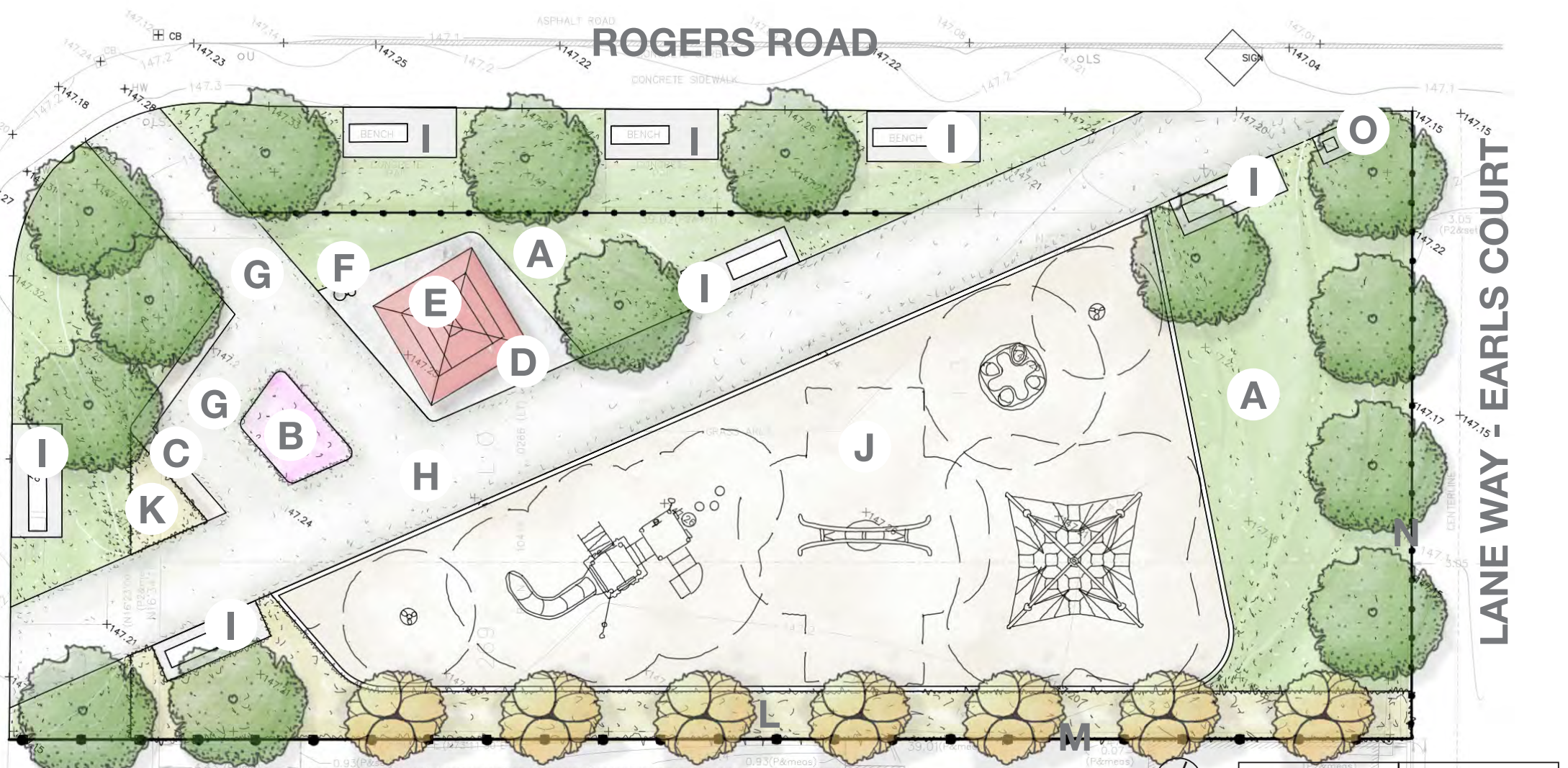
- K** grasses and shrub planting
- L** grasses, shrubs and multi-stem tree planting
- M** 2.0 m high wood fence
- N** 1.2 m high metal fence
- O** waste/recycling bins

CONCEPT B

NAIRN AVENUE

ROGERS ROAD

LANE WAY - EARLS COURT



LEGEND

- | | | |
|---|---|---|
| A open lawn | F water fountain/bottle filler | K grasses and shrub planting |
| B community perennial planting bed | G 2.1m wide concrete walkway | L grasses, shrubs and multi-stem tree planting |
| C armourstone seat wall | H 2.4m wide concrete walkway | M 2.0 m high wood fence |
| D shade structure | I bench | N 1.2 m high metal fence |
| E accessible picnic table | J play area with cedar weave mulch surface | O waste/recycling bins |

SURFACING

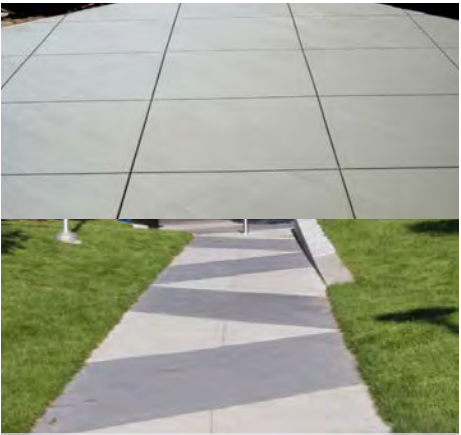
BOTH CONCEPTS



A - CONCRETE PATHWAY



C - FIBER WEAVE CEDAR
SAFETY SURFACING

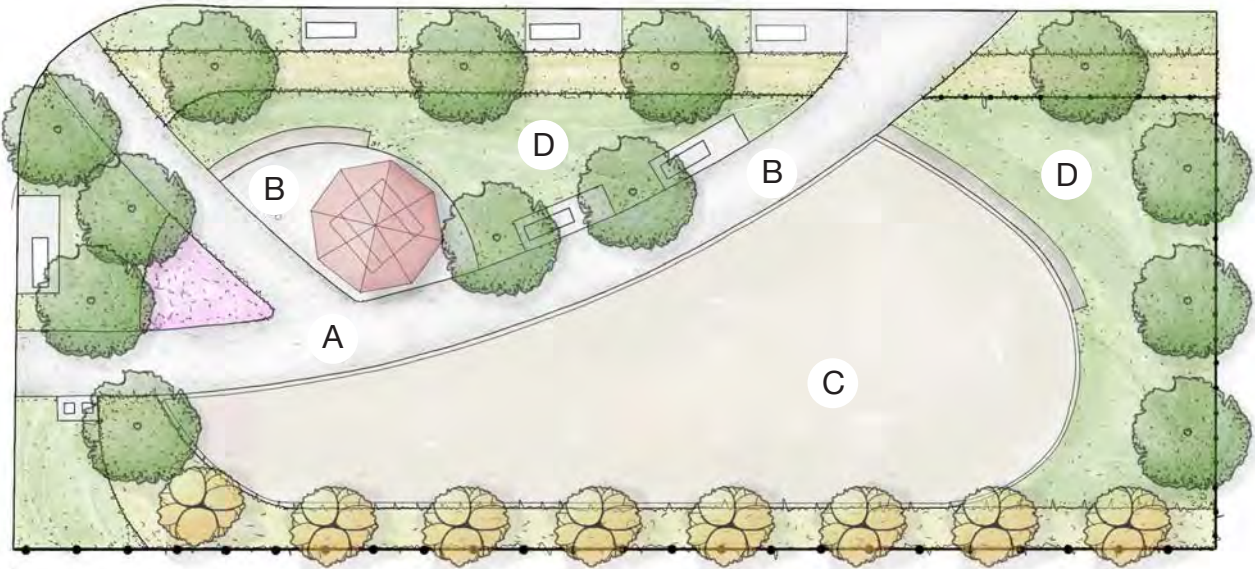


*B - CONCRETE PAVING
WITH DECORATIVE CONTROL
LINES OR COLOURED
CONCRETE

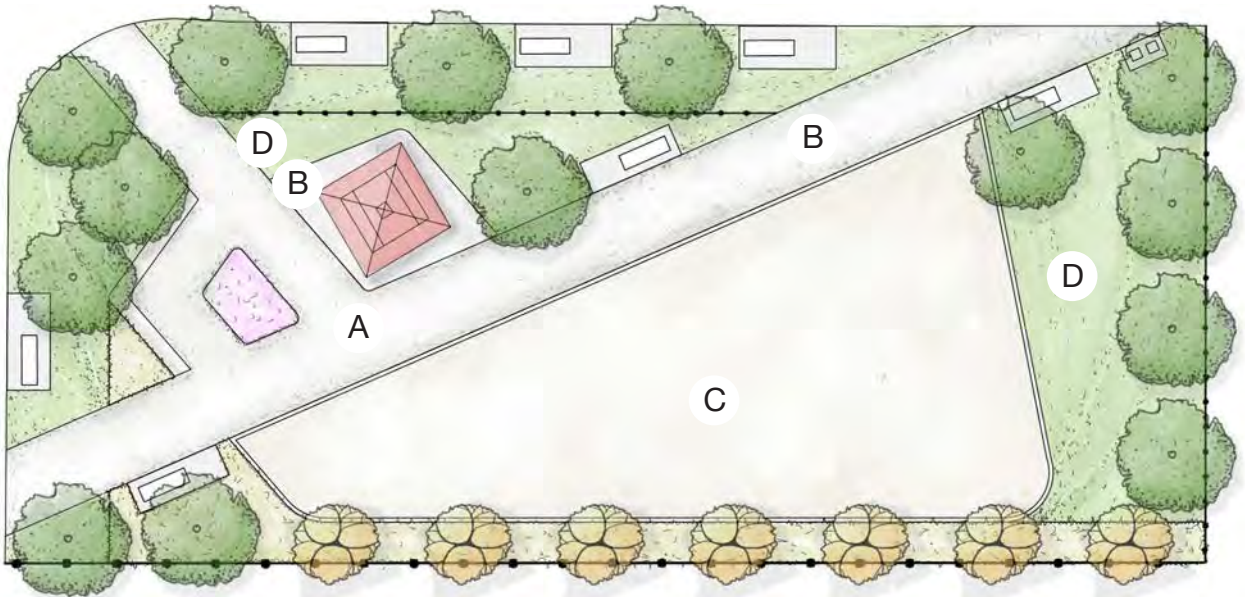
* BUDGET PERMITTING



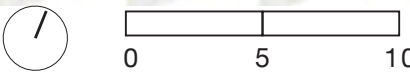
D - SODDED OPEN LAWN



CONCEPT A



CONCEPT B



PLAY EQUIPMENT

NATURAL THEME



SENIOR PLAYHOUSE STRUCTURE



CLIMBING NET



JUNIOR PLAYHOUSE



BEE SPRINGER



SPINNER

MODERN/TRADITIONAL THEME



SENIOR PLAYHOUSE STRUCTURE



GROUP SPINNER



SPINNER



BUCKET SWING



NET CLIMBER

CONTEMPORARY THEME



JUNIOR/SENIOR PLAY
STRUCTURE



STANDING TEETER TOTTER



JUNIOR PLAYHOUSE



BUCKET SWING



SPINNER

AMENITIES

(CONTINUED)

BOTH CONCEPTS



G - WASTE/RECYCLING BINS



*H - WATER FOUNTAIN/
BOTTLE FILLER

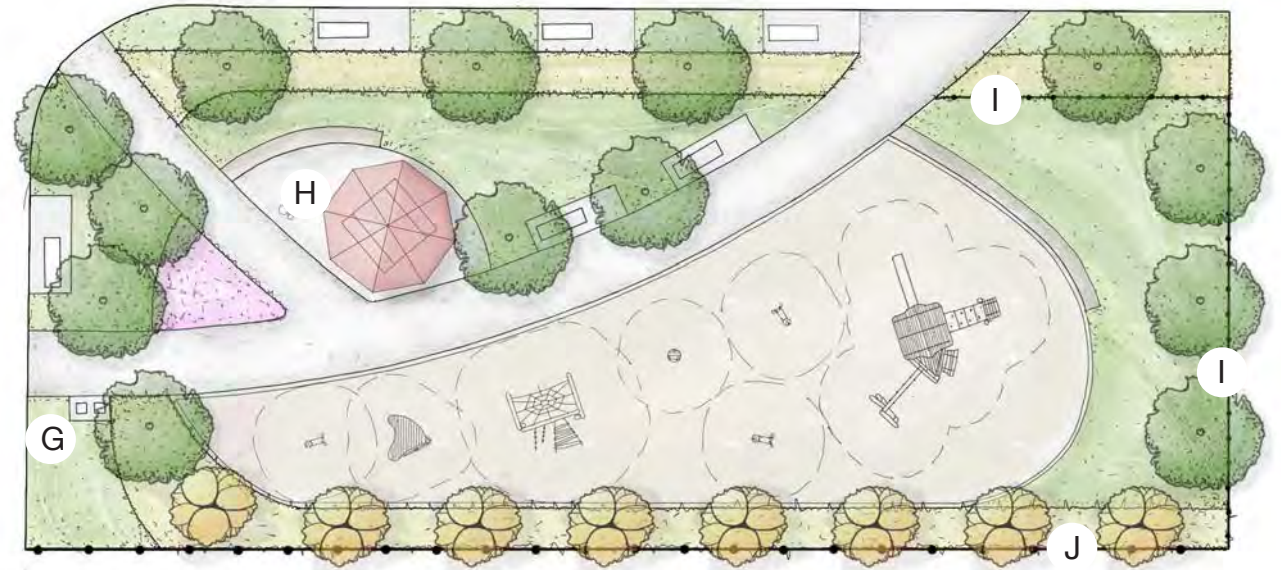
* BUDGET PERMITTING



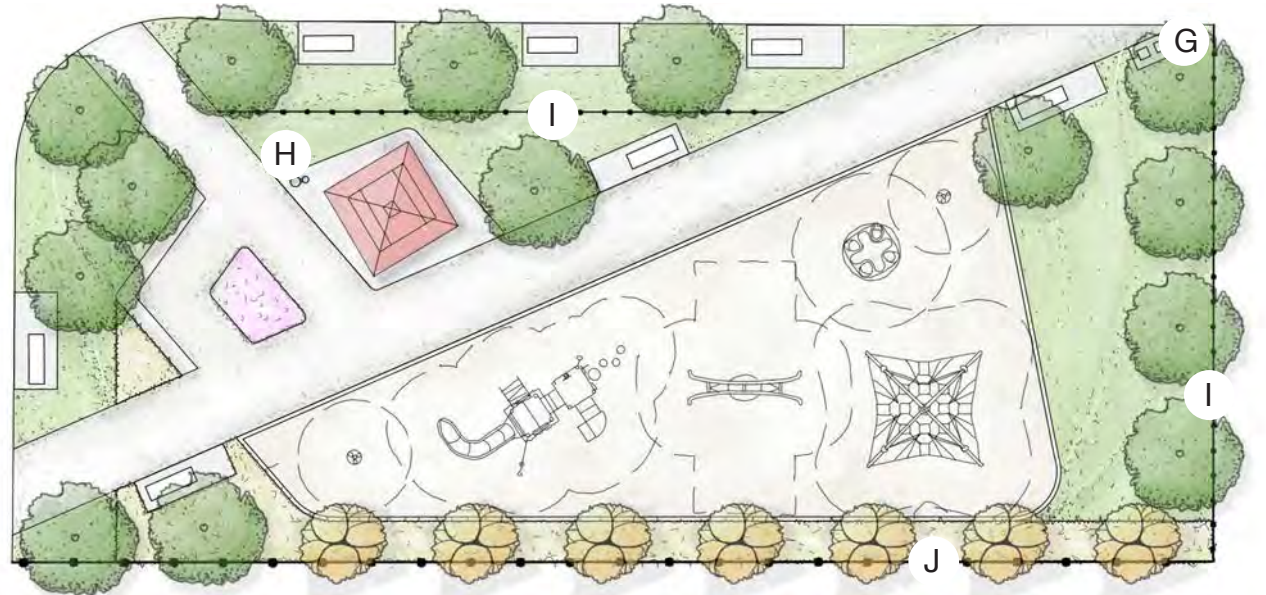
I - 1.2 M HIGH METAL FENCE



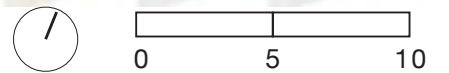
J - 2.0M HIGH WOOD FENCE



CONCEPT A



CONCEPT B



AMENITIES

CONCEPT A



A - SHADE STRUCTURE

CONCEPT B



B - SHADE STRUCTURE

BOTH CONCEPTS



C - BACKLESS BENCH



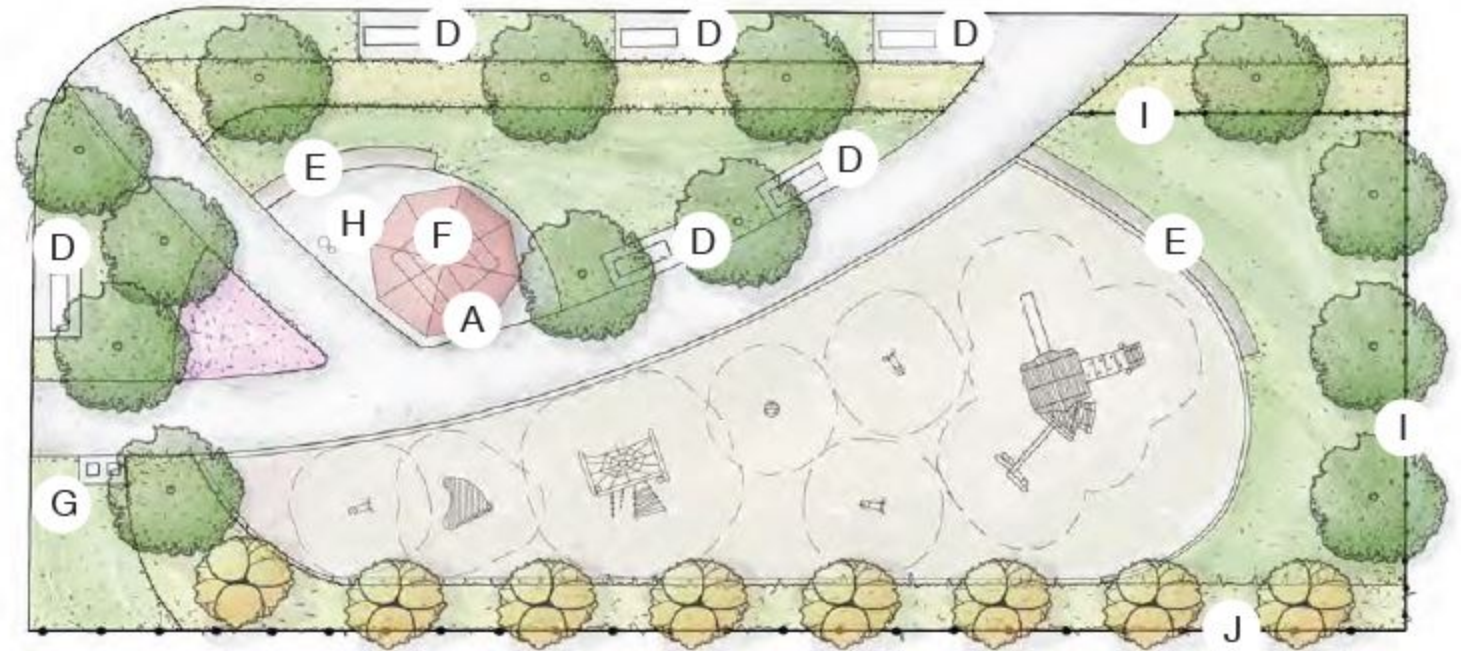
D - ACCESSIBLE BACKED BENCH



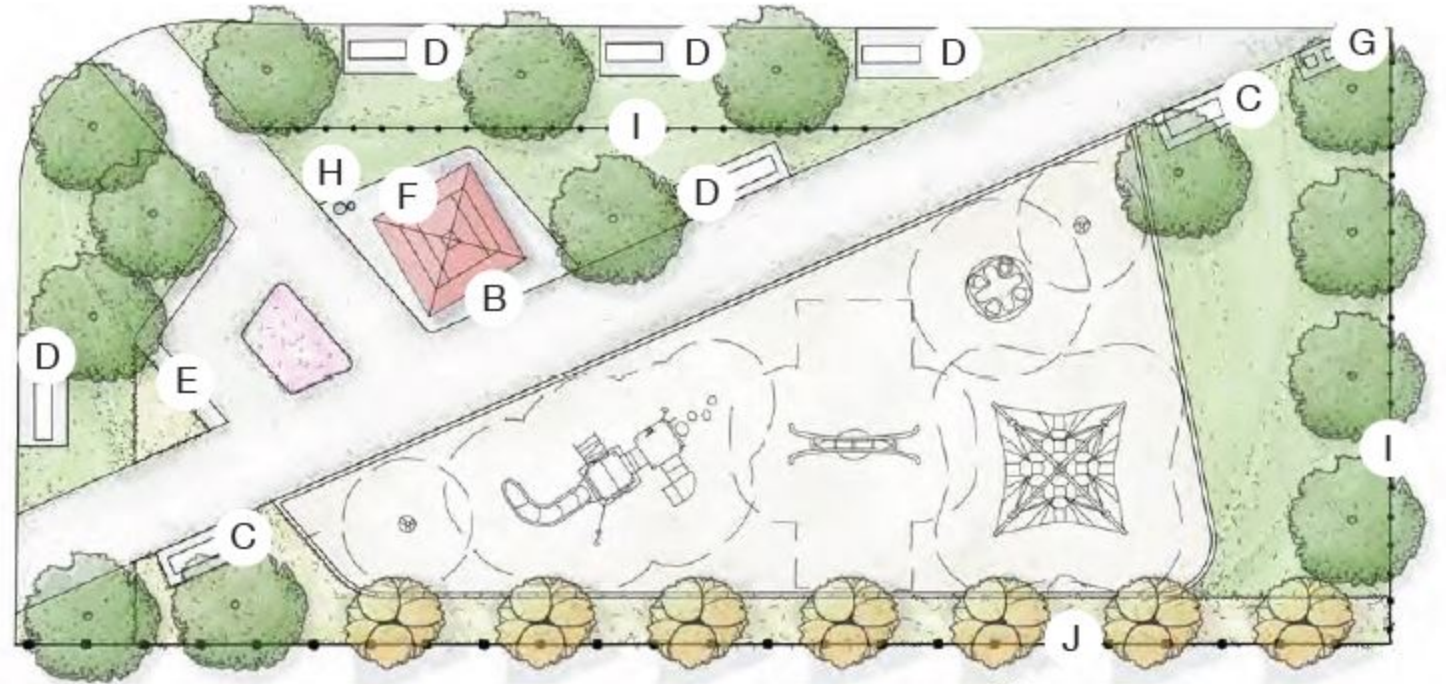
E - ARMOUR STONE SEAT WALL



F - ACCESSIBLE PICNIC TABLE



CONCEPT A



CONCEPT B



PLANTING

BOTH CONCEPTS



A - DECIDUOUS
SHADE TREE



B - MULTI-STEM TREE



C - DECIDUOUS
SHRUB BUFFER



D - EVERGREEN
SHRUB BUFFER

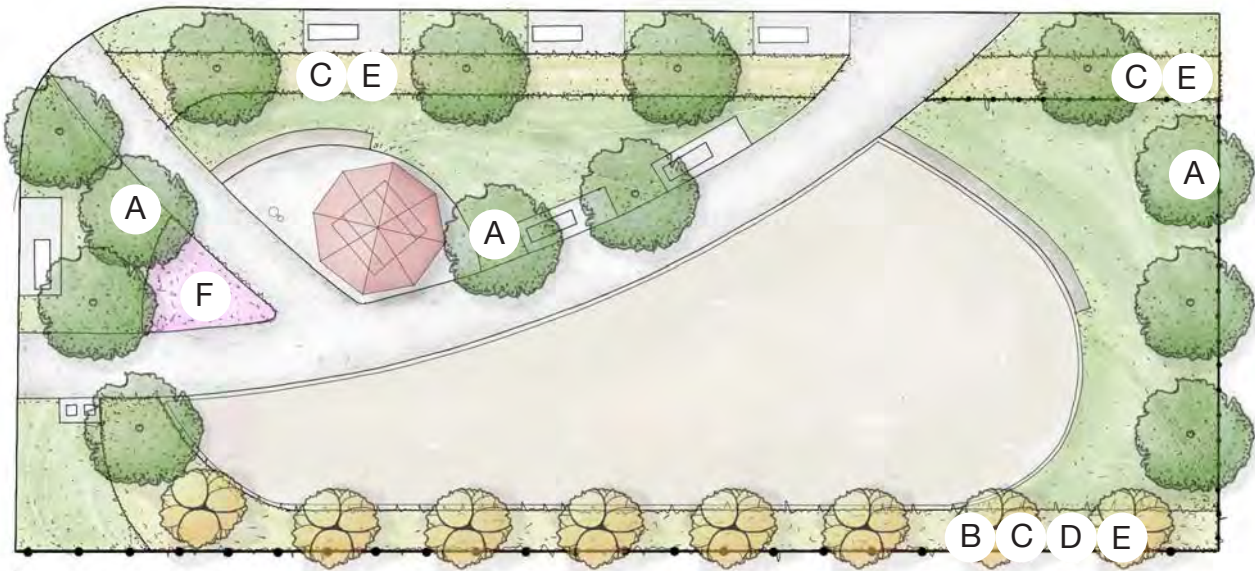


E - ORNAMENTAL
GRASSES BUFFER

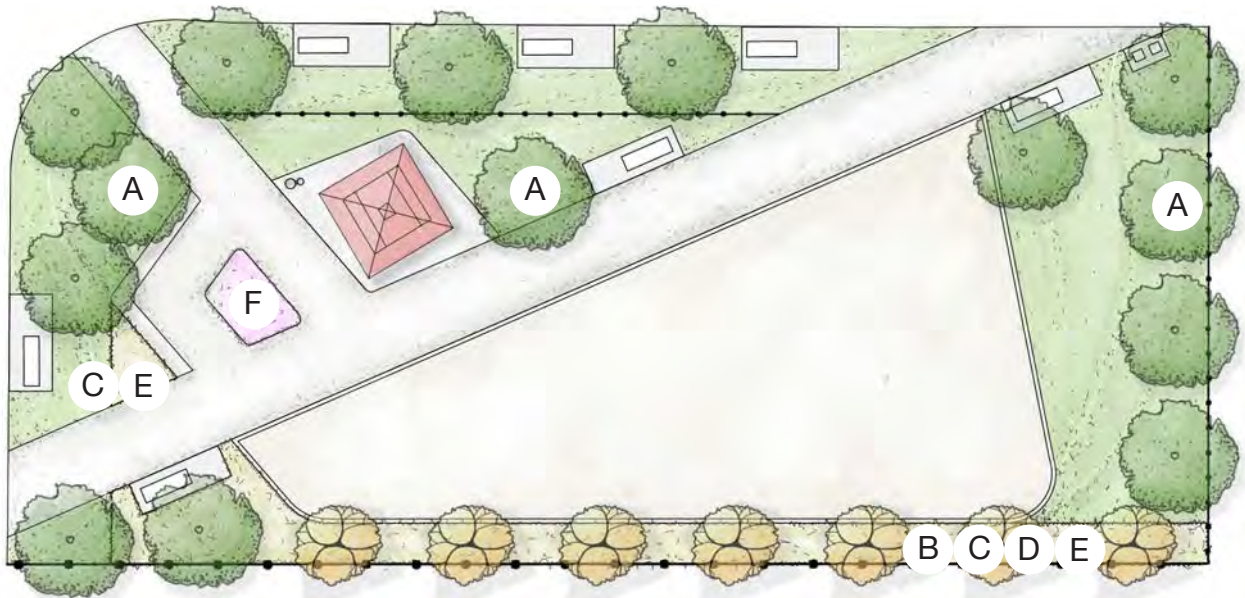


*F - NATIVE/POLLINATOR
PERENNIAL COMMUNITY
GARDEN

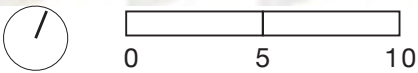
*pending confirmation of community interest in submitting application to PollinateTO program

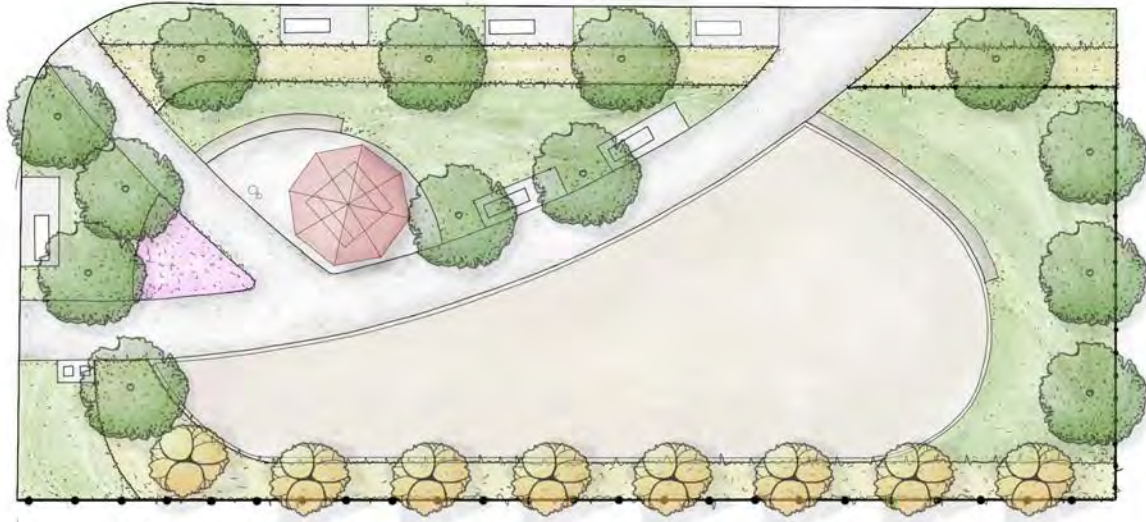


CONCEPT A

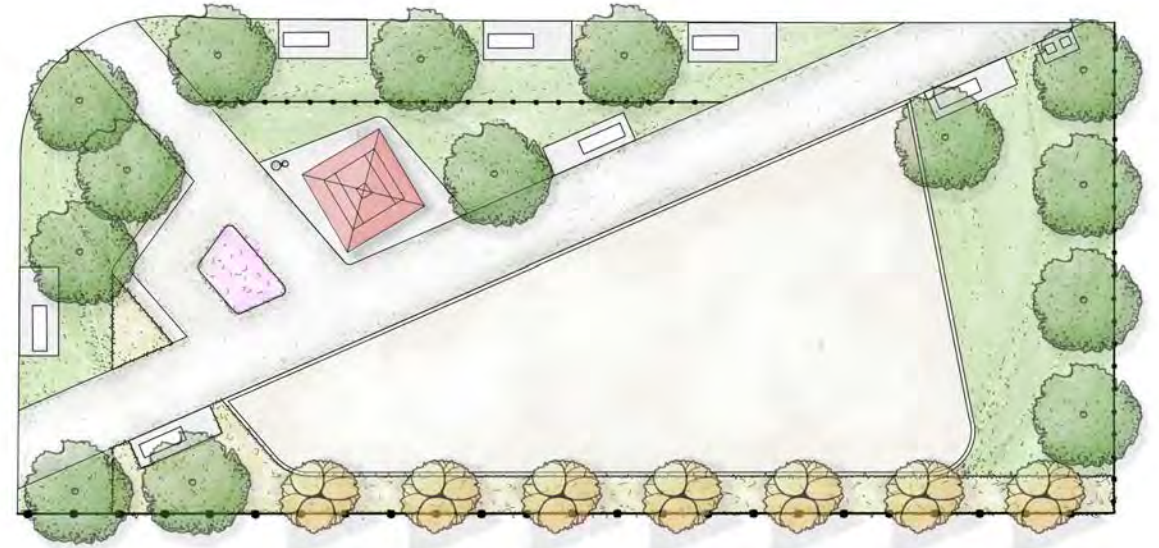


CONCEPT B





CONCEPT A



CONCEPT B

HOW TO PARTICIPATE: RAISE YOUR HAND OR USE THE CHAT

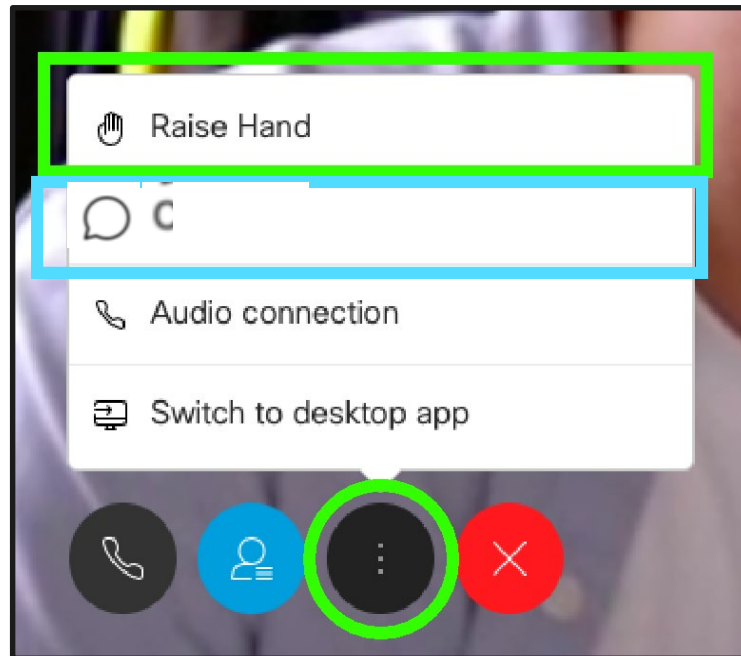
To ask a question and share feedback, you can virtually raise your hand.

IF YOU ARE
USING A
COMPUTER



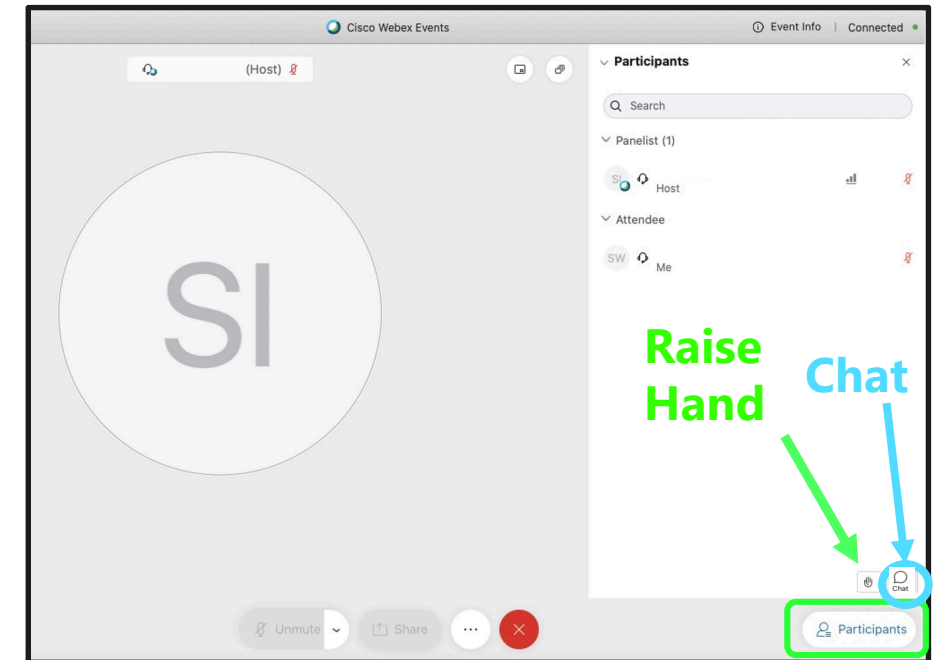
Via the internet browser

Click the "..." button at the bottom of the video window and select "Raise Hand" or "Chat".



Via the Webex App

Click the Participants button at the bottom of the video (the Participants panel will open to the right). Then click the "Raise Hand" or "Chat" button at the bottom right.

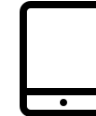
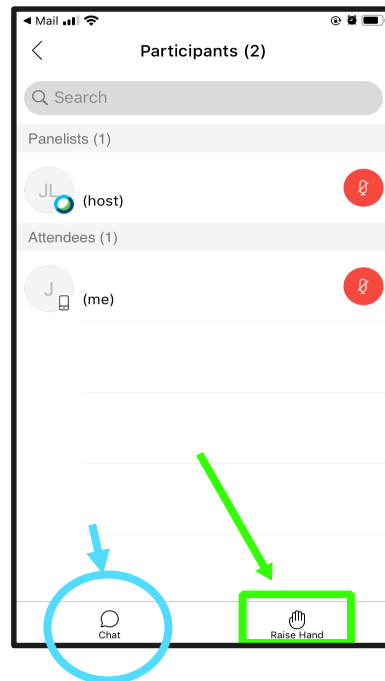
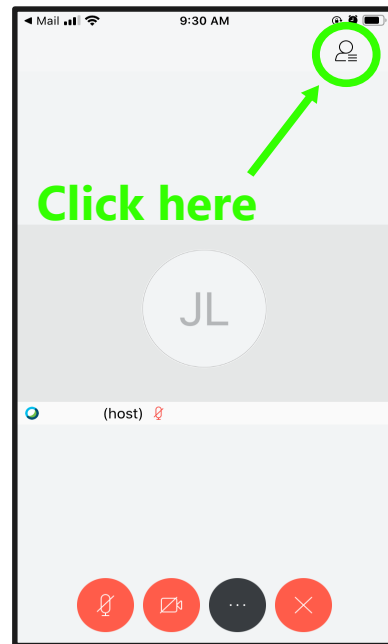


To ask a question and share feedback, you can virtually raise your hand or ask a question in the chat.



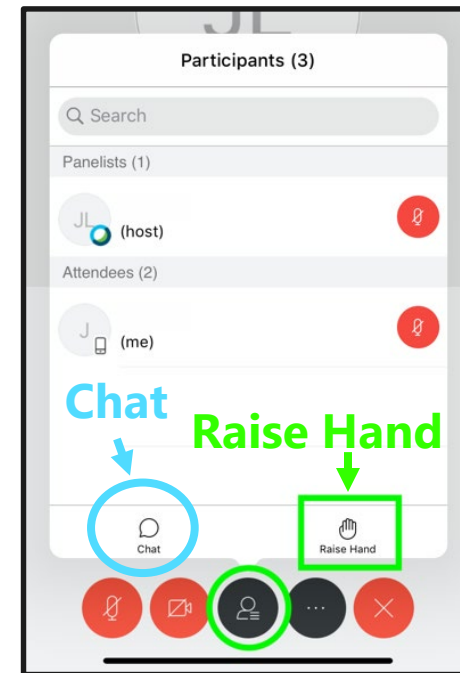
For smartphones

Click the Participants panel button at the top right corner of the screen. Then click "Raise Hand" or "Chat" at the bottom right of the screen.



For tablets

Click the Participants panel button at the bottom of the screen. Then click the "Raise Hand" or "Chat" button at the bottom right.

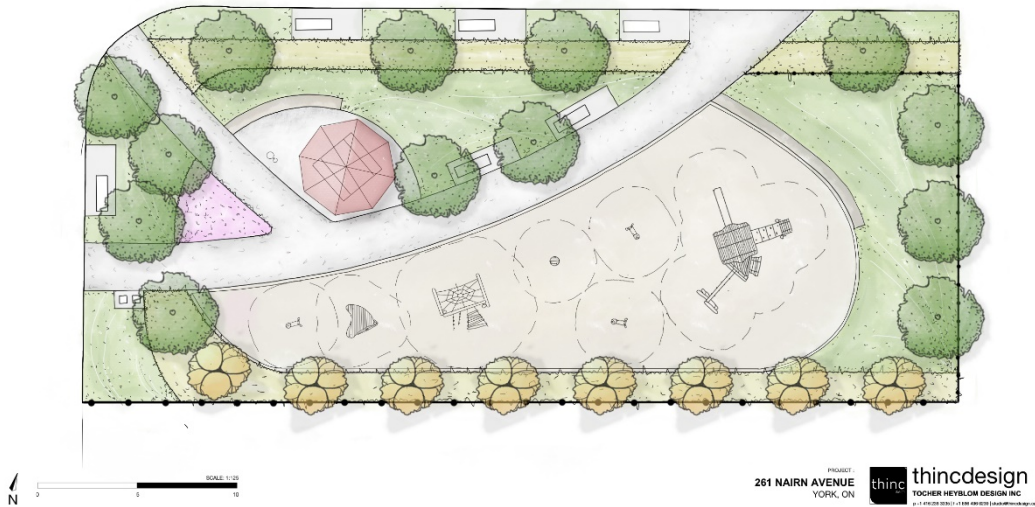


Questions of Clarification

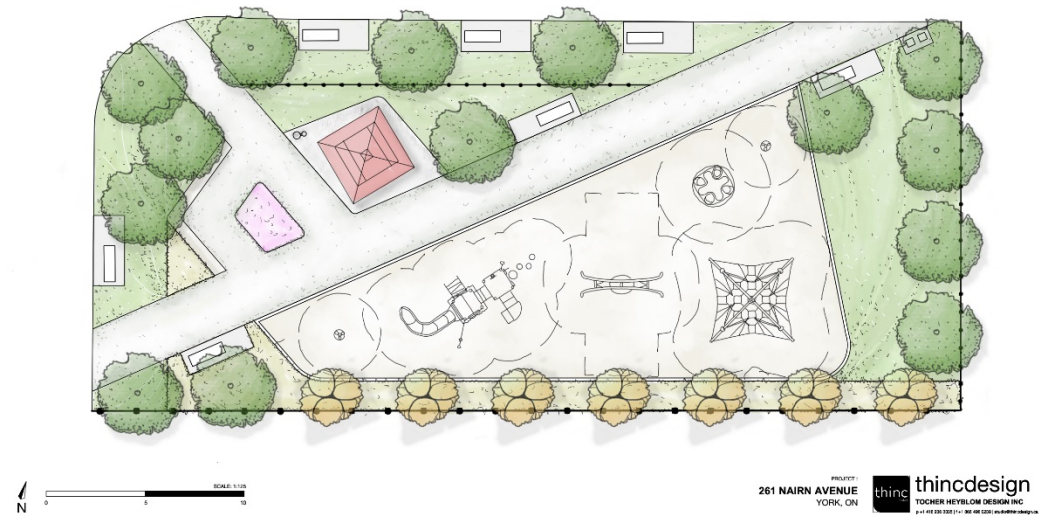
Discussion

Poll: Which Concept Do You Prefer?

Concept: A



Concept: B

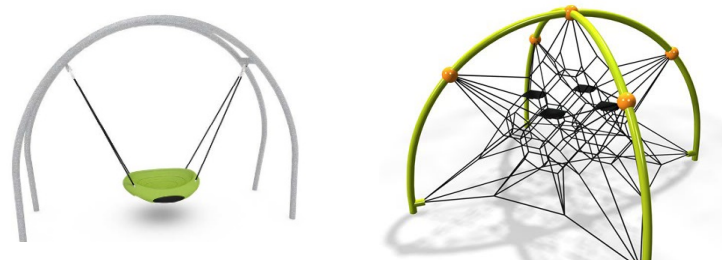


Poll: Which Play Equipment Theme Do You Prefer?

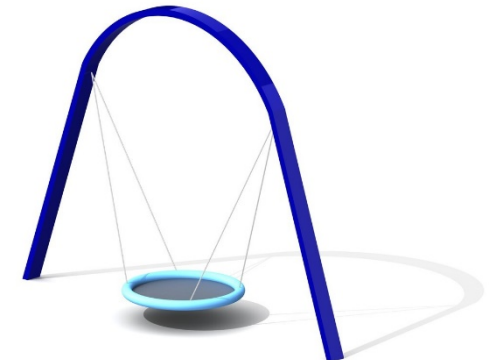
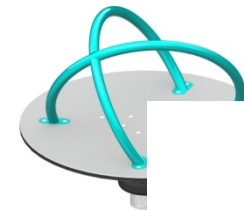
Nature Inspired



Modern/Traditional



Contemporary



Games Tables

Games tables are not currently included in the plan – would you like to see a games table such as ping pong or chess included in the design?

If yes, which type of games table would you prefer?



Alternative Seating

We are considering Muskoka/Adirondack chairs as an alternative seating option for the design.

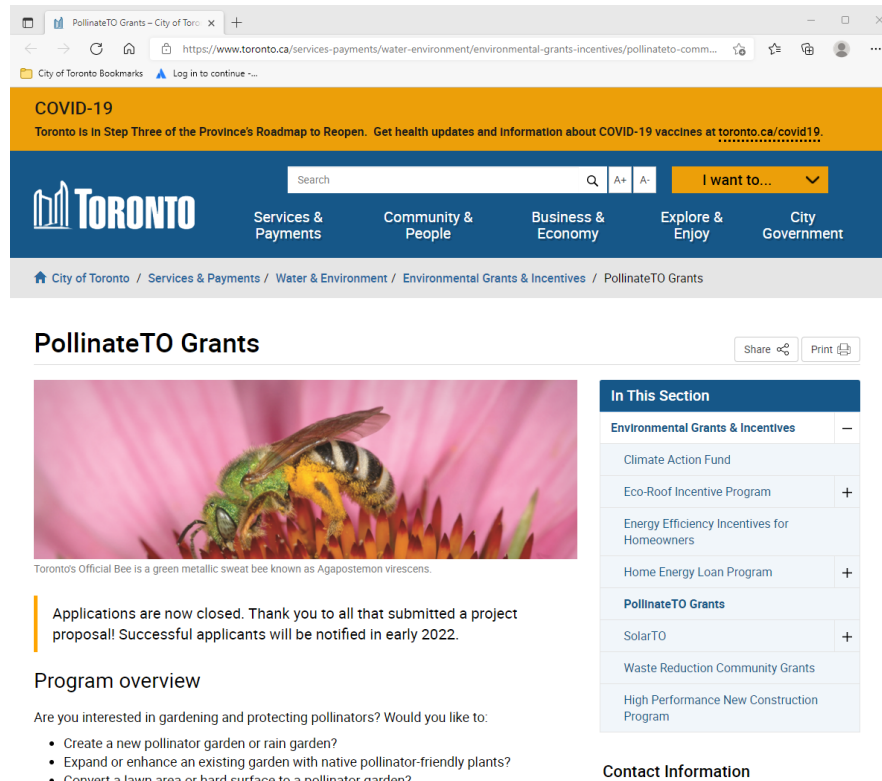
Would like to see some of the benches replaced with chairs in the design?



Pollinate TO Program

A pollinator garden is being considered for the park improvements pending community interest and application approval through the PollinateTO program.

A pollinator garden provides food (pollen and nectar) for important pollinator species like native bees, butterflies, and hummingbirds. These species are important for food production. They transfer pollen from one plant to another (this is called pollination), which allows our food to grow.



The screenshot shows the 'PollinateTO Grants' page on the City of Toronto website. At the top, there is a COVID-19 banner and the City of Toronto navigation bar. The page title is 'PollinateTO Grants'. Below the title, there is a large image of a green metallic sweat bee on a pink flower. To the right of the image is a table titled 'In This Section' listing various grants and incentives. Below the image, there is a message stating that applications are now closed and successful applicants will be notified in early 2022. Further down, there is a 'Program overview' section with a list of bullet points describing the types of gardens that can be created or enhanced. At the bottom right, there is a 'Contact Information' section.

PollinateTO Grants

Share Print

In This Section

Environmental Grants & Incentives	—
Climate Action Fund	
Eco-Roof Incentive Program	+
Energy Efficiency Incentives for Homeowners	
Home Energy Loan Program	+
PollinateTO Grants	
SolarTO	+
Waste Reduction Community Grants	
High Performance New Construction Program	

Contact Information

Program overview

Are you interested in gardening and protecting pollinators? Would you like to:

- Create a new pollinator garden or rain garden?
- Expand or enhance an existing garden with native pollinator-friendly plants?
- Convert a lawn area or hard surface to a pollinator garden?

The pollinator garden would require a group of community members to submit an application and, if approved, commit to implementing and maintaining the garden in the long-term.

If you are interested in being involved, you can submit your email address via the online survey or get in touch with Lara Herald (via project webpage) and we will connect you with further resources.

toronto.ca/NairnPark

Next Steps

Next Steps

For project updates visit:
toronto.ca/261nairnpark

Take the survey and
share the survey with
your friends, family
and neighbours !



chkmkt.com/261Nairn