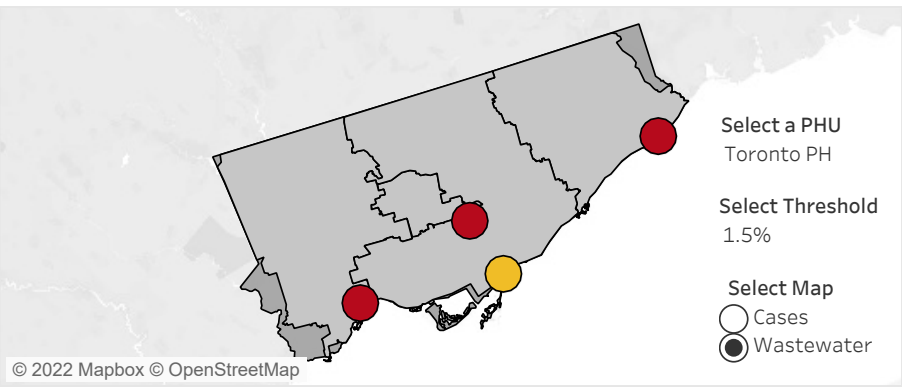


COVID-19 Wastewater Surveillance Dashboard: Toronto Overview

Overview of Cases and Wastewater from Mar 06, 2022 to Apr 04, 2022

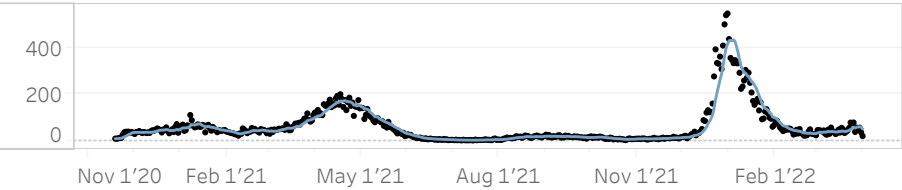
Printed on: Apr 06, 2022



Changes of Cases and Wastewater (WW): Increase | Little to No Change | Decrease

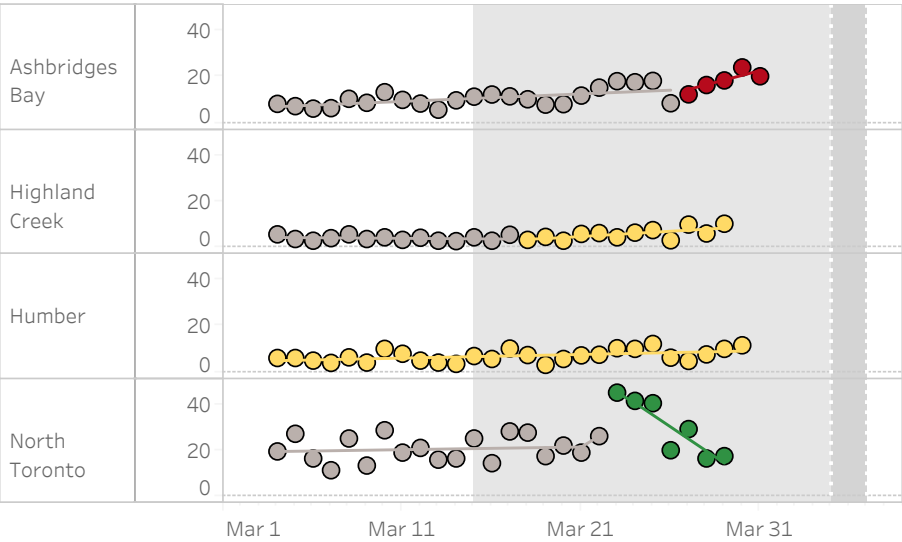
PHU Region	Sys Sewershed	Pop. 2020	Cases	WW
Toronto	Ashbridges Bay	1,518,051	Red	Yellow
	Highland Creek	540,528	Yellow	Red
	Humber	712,971	Yellow	Red
	North Toronto	195,099	Green	Red

Cases All-Time (with 7-day moving average)



Legend: 1. The 1.5% threshold is used to determine the colour-coding for the wastewater virus signal (WW). **2.** A 10% threshold is used to determine the colour-coding for the cases data. **3. Red** means the trend is going up and is greater than the selected 1.5% threshold. **4. Yellow** means the selected 1.5% threshold is not exceeded. **5. Green** means the trend is decreasing at more than 1.5%.

Cases Based on Reported Date (30 days with trend line)



Wastewater (Log normalized N1N2 7-DMA, 30 days with trend line)

