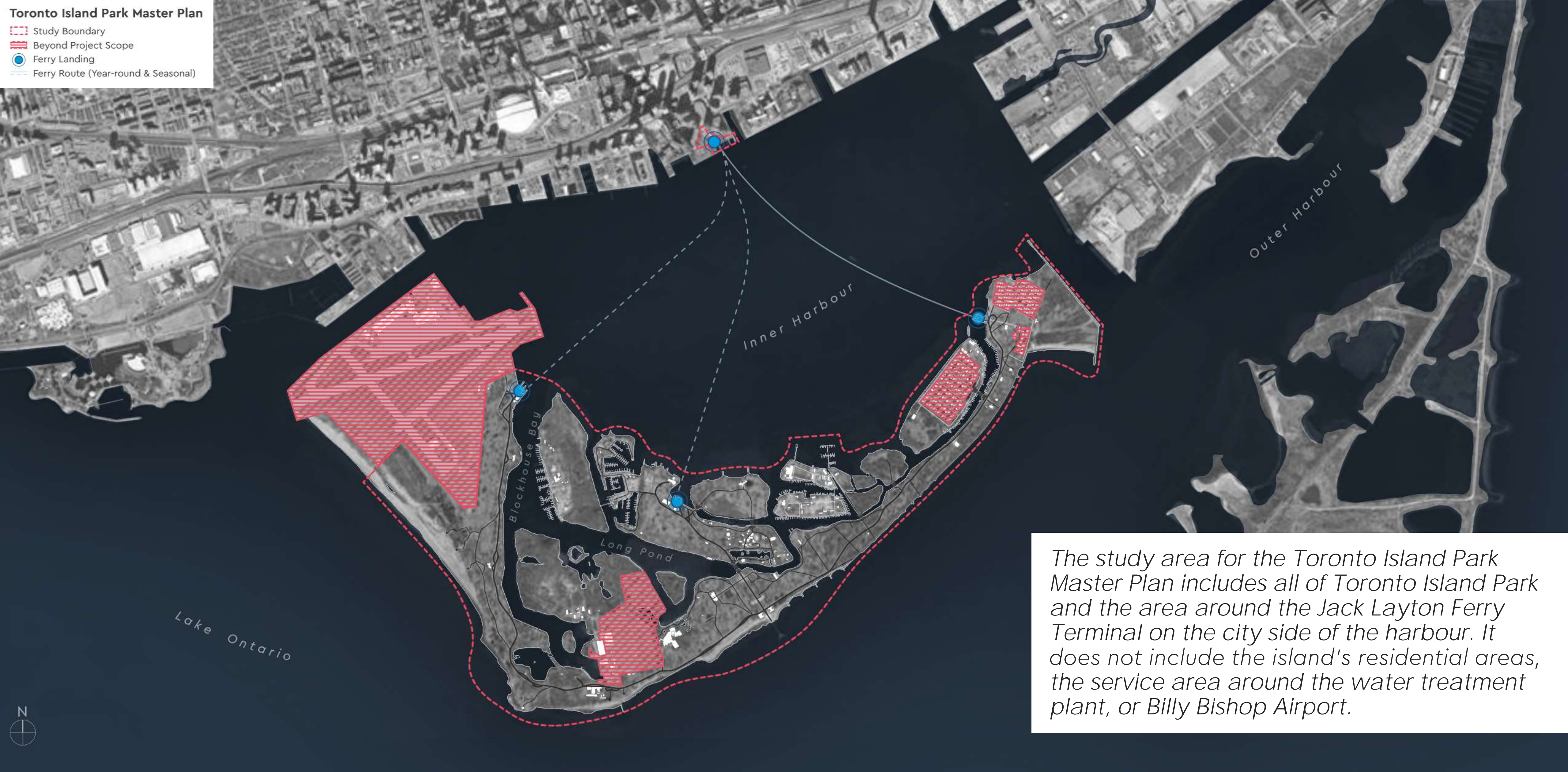




Public Open House

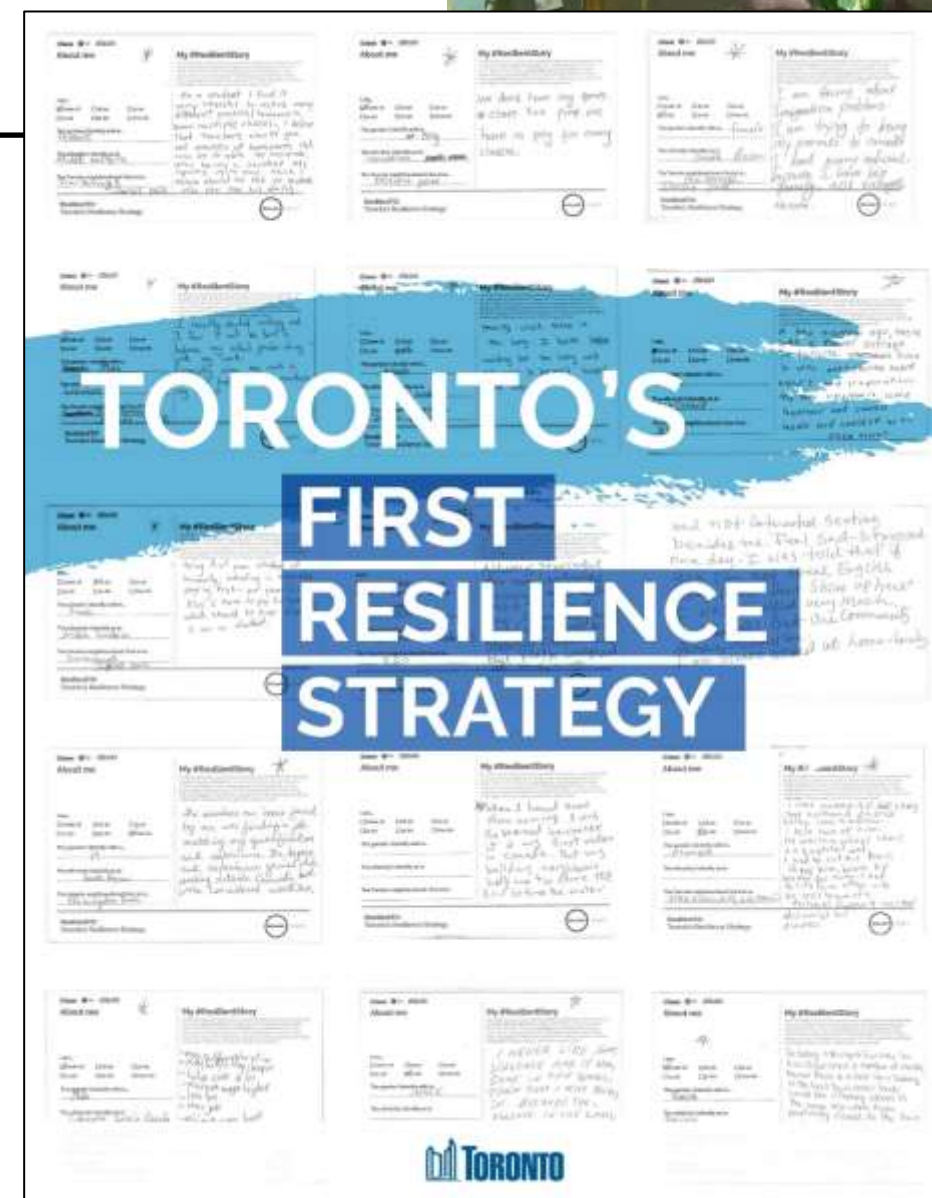
Overview Presentation



Toronto Island Park Study Area

Parallel Initiatives

Down- town Parks and Public Realm Plan



City-wide Policy & Initiatives:

Official Plan

Parkland Strategy

Parks & Recreation Facilities Master Plan

Toronto's First Resilience Strategy

Toronto Biodiversity Strategy

Public Art Strategy

Toronto Parks and Trails Wayfinding Strategy

Downtown-specific Policy & Initiatives:

TOCore: Downtown Parks & Public Realm Plan

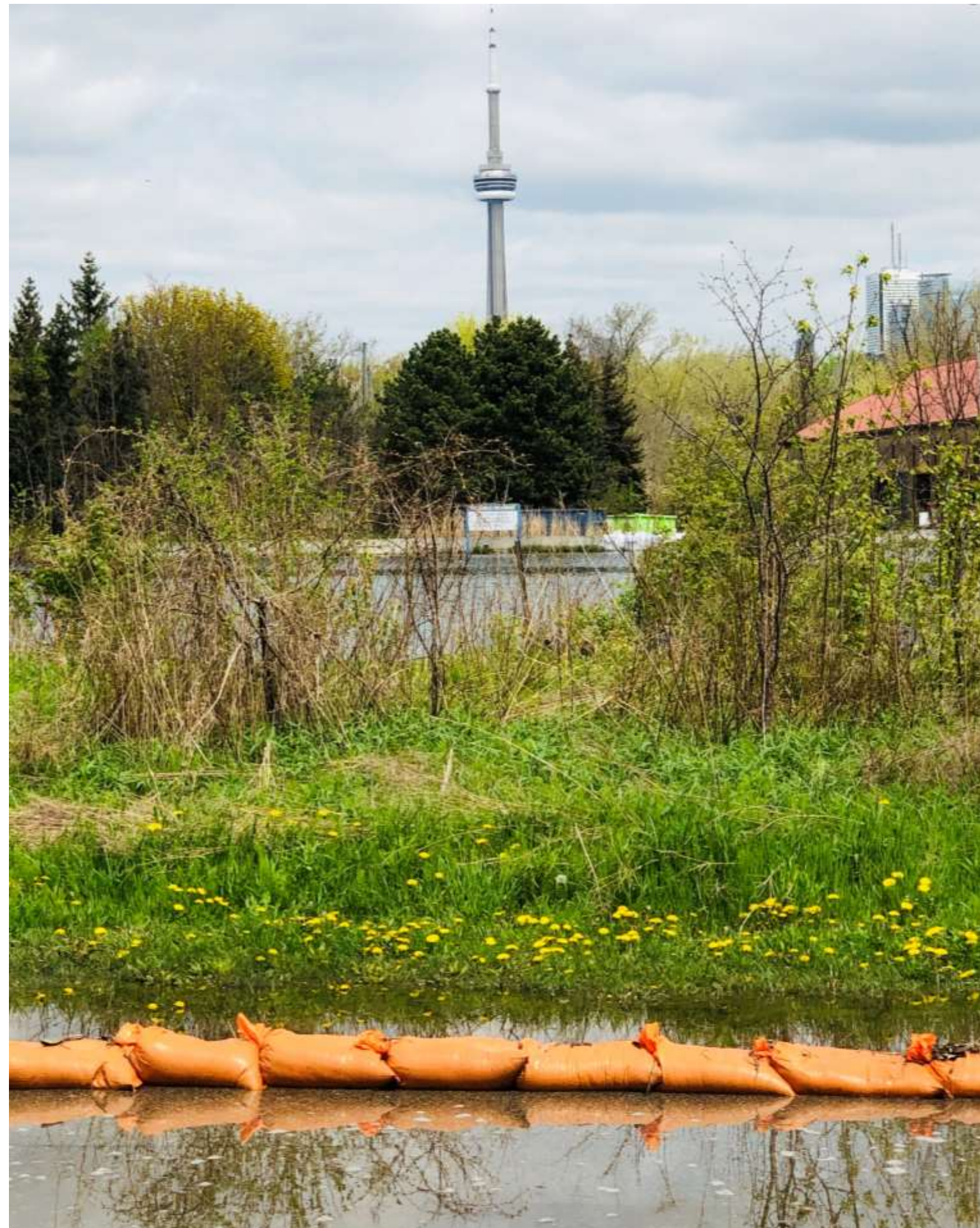
Central Waterfront Secondary Plan

Waterfront Toronto Resilience Strategy

Waterfront Toronto Marine Use Strategy

Billy Bishop Airport Master Plan Update

Parallel Studies



City of Toronto:

Toronto Island Park Business Strategy

Toronto Island Cultural Heritage Resource Assessment

Toronto Island Public Life Study

Island Stories

Ferry Fleet Replacement Strategy

TRCA:

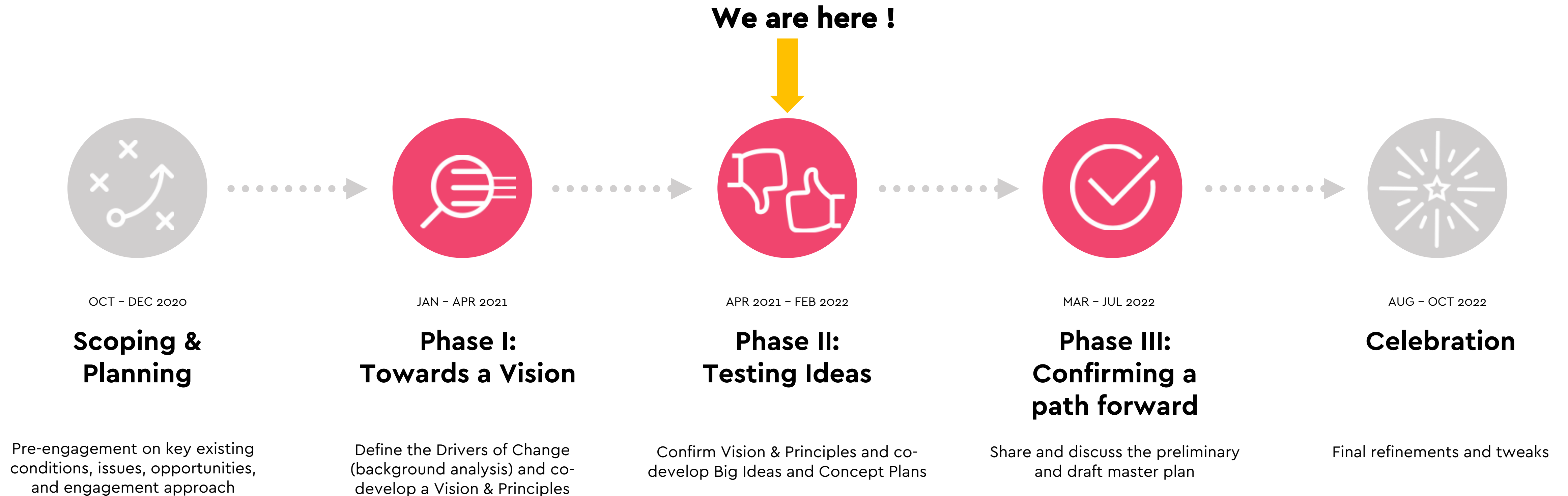
Gibraltar Point Erosion Control Project

Toronto Island Park Flood and Erosion Mitigation EA

Class I Archaeological Assessment

Project Structure and Status

A three-part process



Engagements / Events – Phase 2

Phase 2

1. Technical Advisory Committee Meeting
2. Big Ideas Engagement
3. Combined TAC/CAC
4. Public Ideas Workshop
5. Focus Groups + Targeted Discussions
6. Technical Advisory Committee Meeting
7. Belonging Forum
8. Community Advisory Committee
9. Design Review Panel Meeting
10. Rights Holder Meetings
- 11. Public Open House and Deep Dive Workshops**
12. Indigenous Sharing Meeting

- ✓ May 14th 2021
- ✓ May/June 2021
- ✓ July 13th 2021
- ✓ July 21st 2021
- ✓ Oct/Nov/Dec 2021
- ✓ Nov 30th 2021
- ✓ Dec 9th 2021
- ✓ Feb 16th 2022
- ✓ Feb 17th 2022
- ✓ Feb/Mar 2022
- ✓ **Mar 2022**
- ✓ Mar 9th 2022

Phase 2B

Advisory / Working Groups



**Community Advisory
Committee**



**Technical Advisory
Committee**



**Indigenous Rights Holders
and Communities**

How do you explore change in a place that everybody loves and wants to protect?

How do we plan, think creatively and make room for “change” in Toronto Island Park?

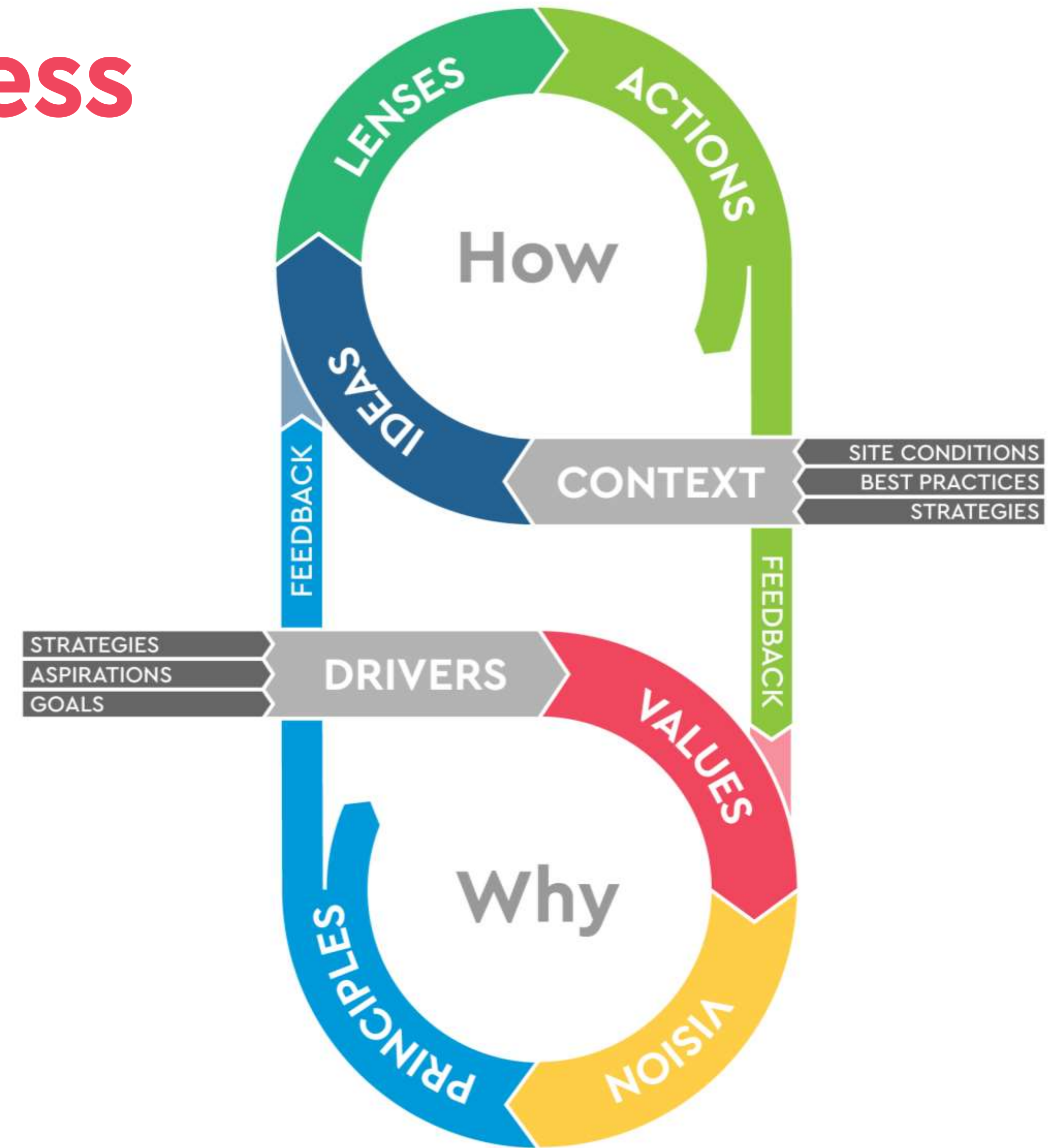
Develop an iterative process

Two complementary processes inform the creation of the master plan:

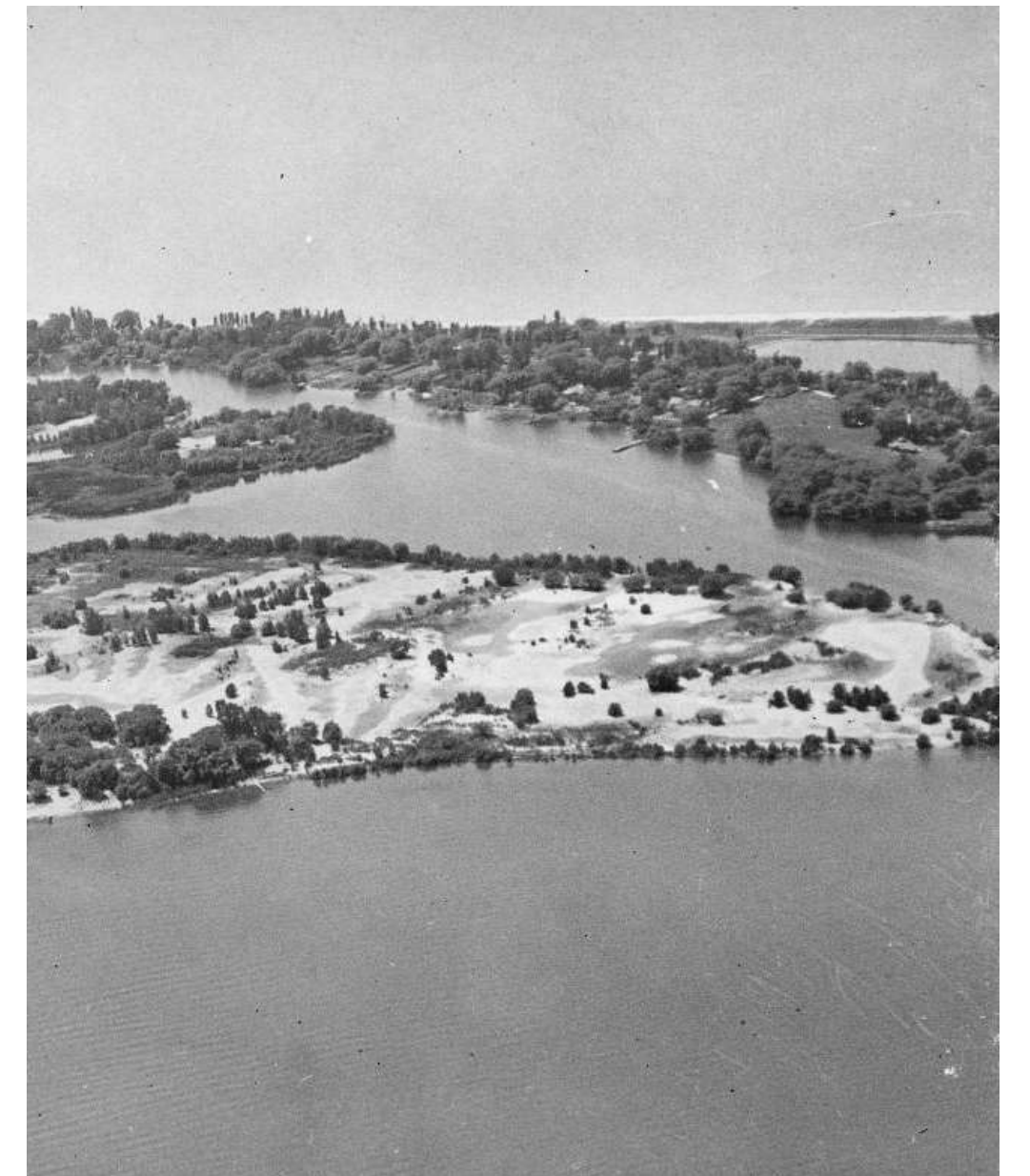
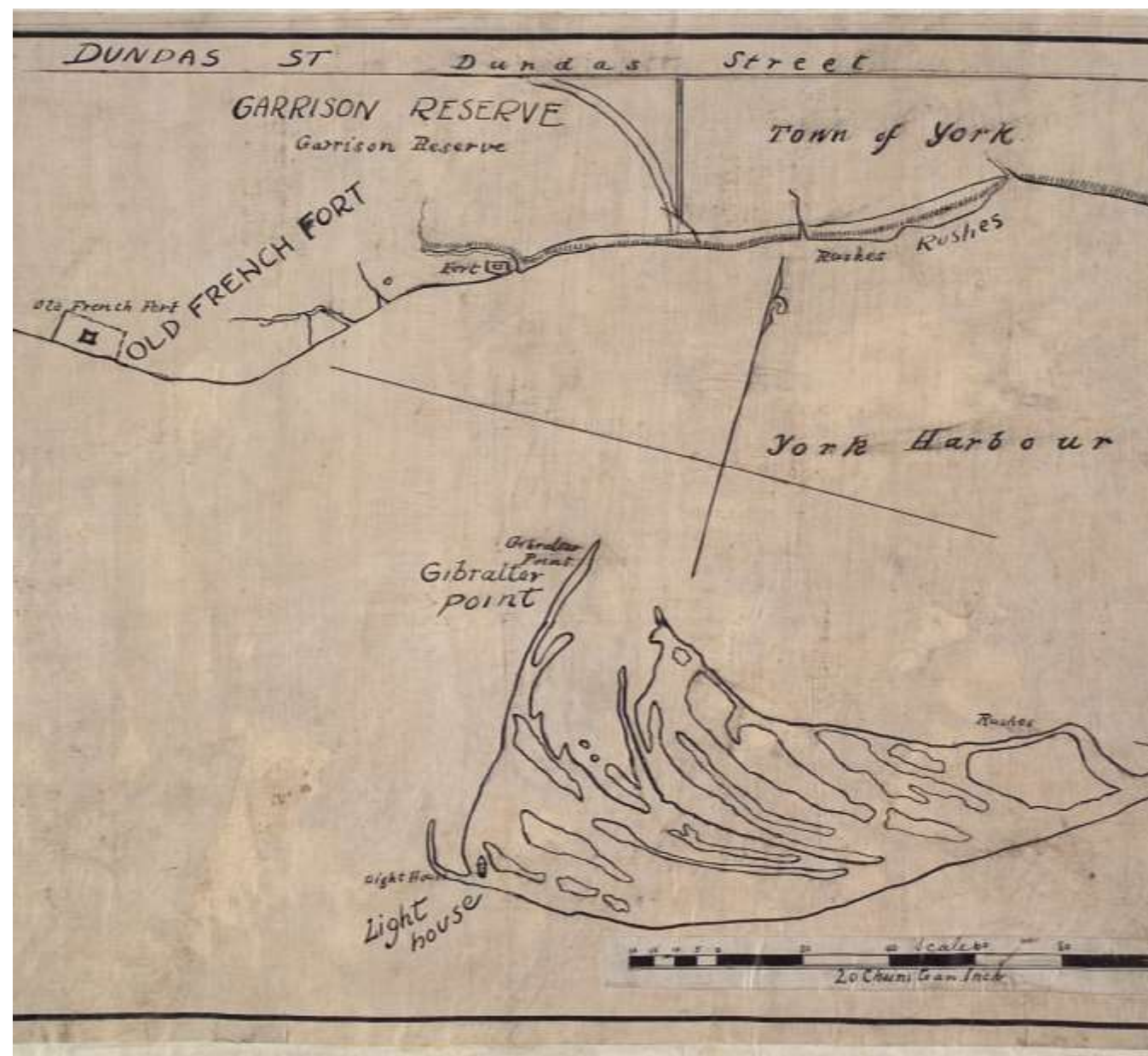
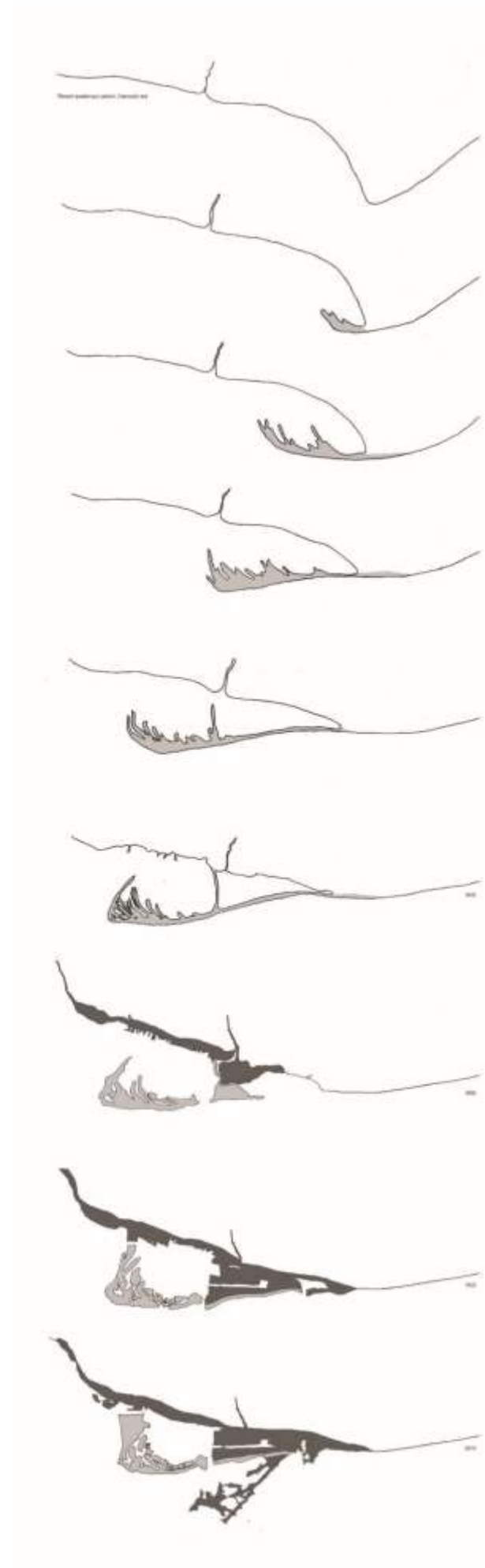
The first process seeks to define **WHY** this master plan is needed both from a current state, park planning, policy and process perspective. The second process seeks to define **HOW** the master plan will be realized through built work, program and operation enhancements.

The outcomes of each work stream are iterative and feedback into one another to inform the ongoing development of the demonstration plan and ultimately the master plan recommendations.

This framework encourages the regular review and evaluation of new outcomes against previous assumptions to create a plan that is dynamic and adaptive, responsive to new inputs and information and expressive of ideas that meet the changing needs of the Island and the people who visit or live there.



Understand how the Island formed



Understand the Island's past



... and the
hidden
stories

Promote protection and value of natural areas



Identify opportunities in existing built heritage



What we heard people love about Toronto Island Park

- Sense of escape and feeling of oasis
- Attractions and businesses on the island
- Beaches, especially the inclusive LGBTQ2S+ space at Hanlan's
- Unique feeling of the park, including tranquility, "quirky" cottage feel of communities
- Feeling of ritual, adventure, and views on the ferries
- Different activities available
- Different ways to access island by boat

What we heard isn't working so well

- Access to and around the island, especially long lines and cost of ferries
- Lack of interpretation of Indigenous history and cultural heritage of the islands
- Environmental challenges (garbage, flooding, impacts of crowds)
- Poor state of some amenities (like washrooms)
- Lack of healthy, diverse, affordable food options
- Lack of winter access or activities
- Lack of areas on beaches and within waterways that prioritize and promote safe non-motorized activities

What we heard through Indigenous engagement

- Create spaces for Indigenous ceremonial, healing, and cultural uses.
- Make Indigenous history, identity, and living culture more visible, including through signage, interpretation, landscaping, and other.
- Include Indigenous languages in wayfinding and interpretation
- Create economic opportunities for First Nations and Indigenous businesses
- Create spaces for arts and cultural programming
- Consider land, water, flora, and fauna

What we've heard from the public

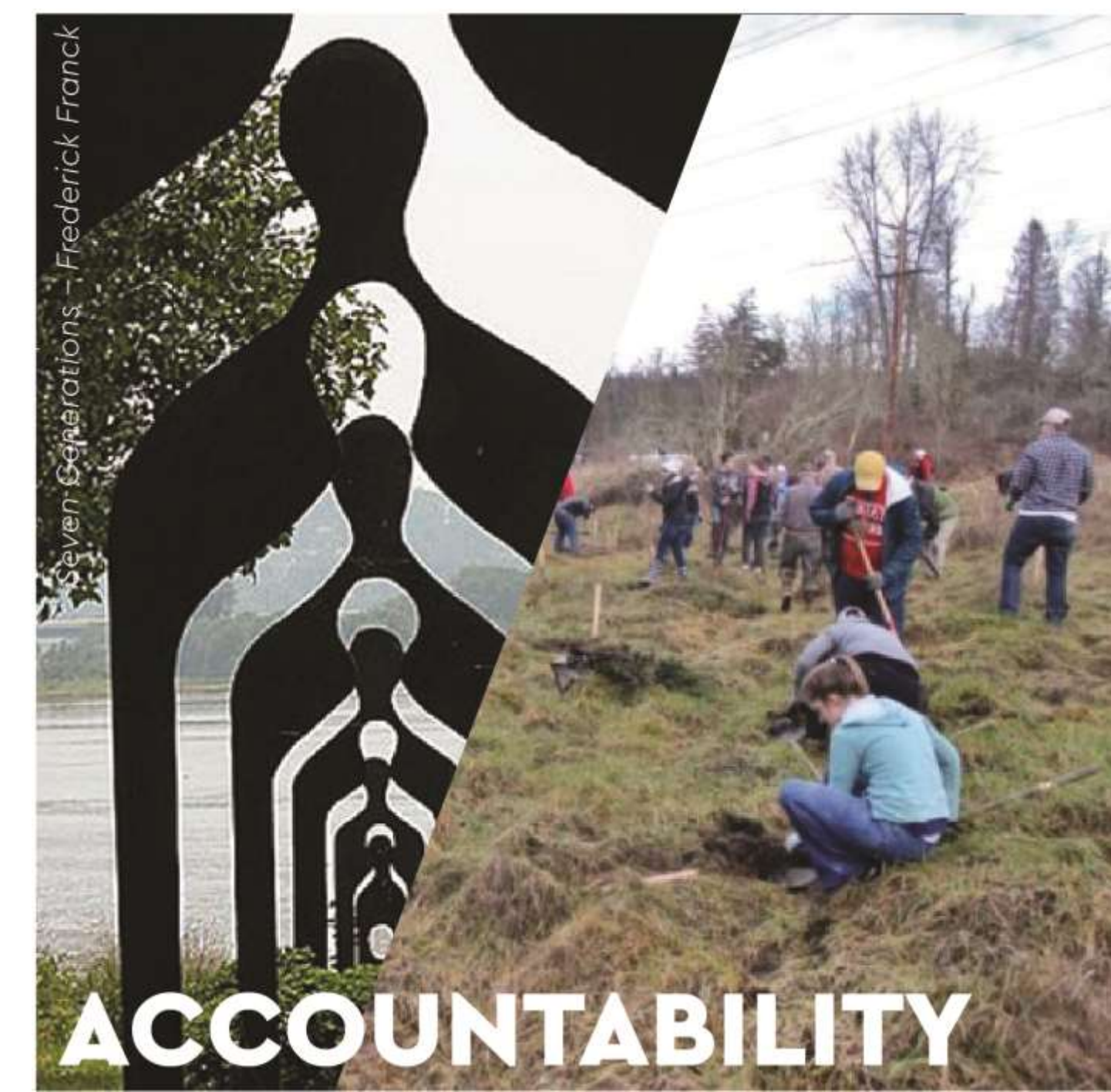
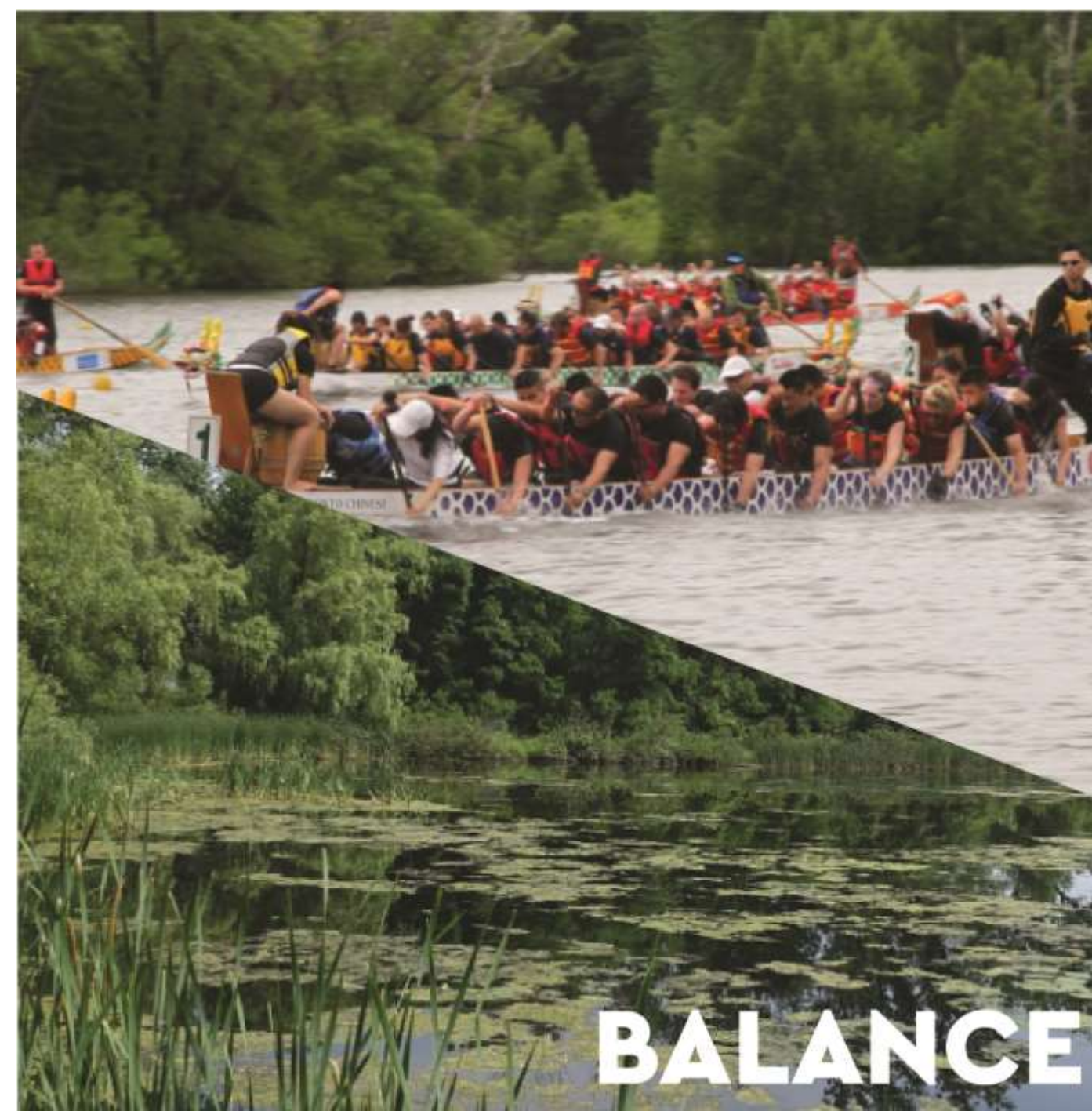
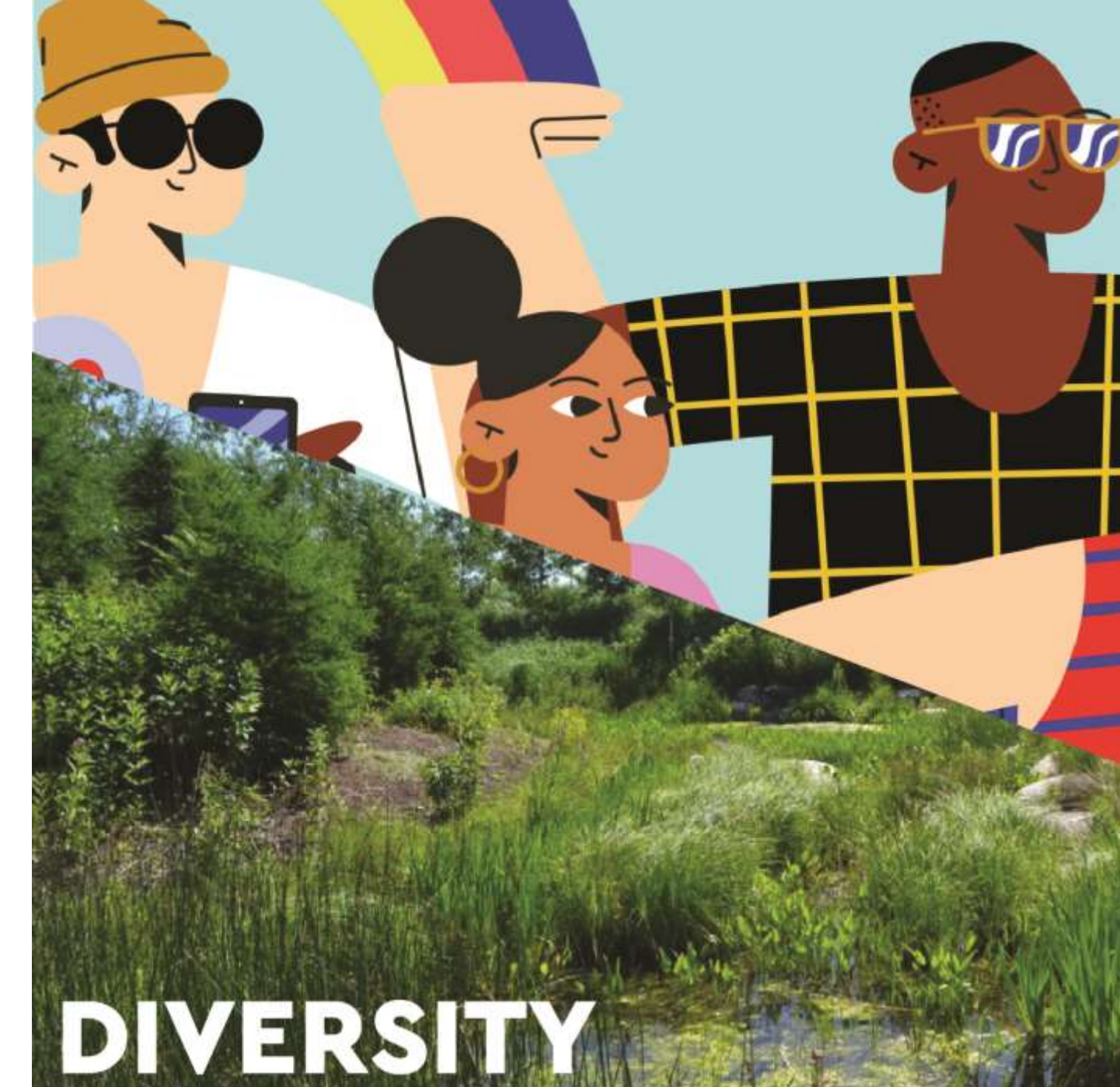
- Create opportunities for celebrating the Island as a place for arts and culture.
- Make the water, and water activities, safer and more accessible.
- Recognize and celebrate Hanlan's as a historic LGBTQ2s+ place.
- Care for the unique ecosystems of the Island and create opportunities for stewardship.
- Build partnerships and programming that would make the Island more accessible for low-income communities.
- Celebrate and share the cultural heritage of the Island.
- Make the Island more accessible for people experiencing disabilities.
- Clearly communicate what the Island has to offer to all Torontonians and visitors.
- Increase opportunities for year-round events and activities.

Understand the current drivers*

** A challenge or opportunity that is driving the need to improve Toronto Island Park*

- The Island's **one-of-a-kind identity** is uncelebrated.
- The **Indigenous history and significance** of the Island is not well known.
- The Island's **cultural and natural heritage** are undervalued.
- The Toronto Island **visitor experience** could be improved.
- The Island has unrealized and **under-realized business opportunities** that should be explored and improved to advance a holistic visitor experience.
- **Access and Accessibility** – It can be difficult to get to the Island.
- Toronto Island is a **dynamic environment** that is constantly changing.
- Toronto Island and its supporting **infrastructure is aging**.
- **Population Growth** is placing increasing demands on Parks.

Identify the values



Outline a vision to inspire



PROTECT + RESTORE

Integrating stewardship and resilience into managing sensitive environments; creating safe, welcoming spaces for all living beings; and preserving the sense of refuge and escape from urban life.



HONOUR + CELEBRATE

Respecting the values and traditions of Indigenous peoples; making space for diverse perspectives to nurture a sense of belonging for all visitors; and sharing broad stories of this complex place.



PLAY + EXPLORE

Embracing the joy and wonder of this place; delivering unique and accessible activities that are Island-specific; and creating a culture of collaboration and sharing to reveal new ways to experience the park.

Establish guiding principles grounded in the values

- Honour and respect Indigenous communities, placekeeping, and their rights and responsibilities to the islands and water
- Celebrate and protect the unique cultural identity and spirit of the islands
- Prioritize, protect, and advocate for the ecological integrity of the islands
- Leverage the dynamic nature of the islands and waterways to support adaptive and flexible uses
- Demonstrate resilience, sustainability, and responsible landscape and water management
- Prioritize equitable access and inclusion and correct the perception of private and public spaces within the park's limits
- Enhance visitor experience for all seasons
- Provide diverse amenities and experiences to encourage exploration, sharing, and discovery
- Support opportunities for diverse and sustainable businesses to thrive
- Develop evidence-based strategic investments to ensure long-term and continued success, and plan in a financially sustainable manner
- Prioritize the enhancement and adaptation of undervalued assets to support new uses
- Ensure any new development embodies the spirit of the Island's character

Understand the Island in the context of the Downtown, Core Circle and Waterfront parks

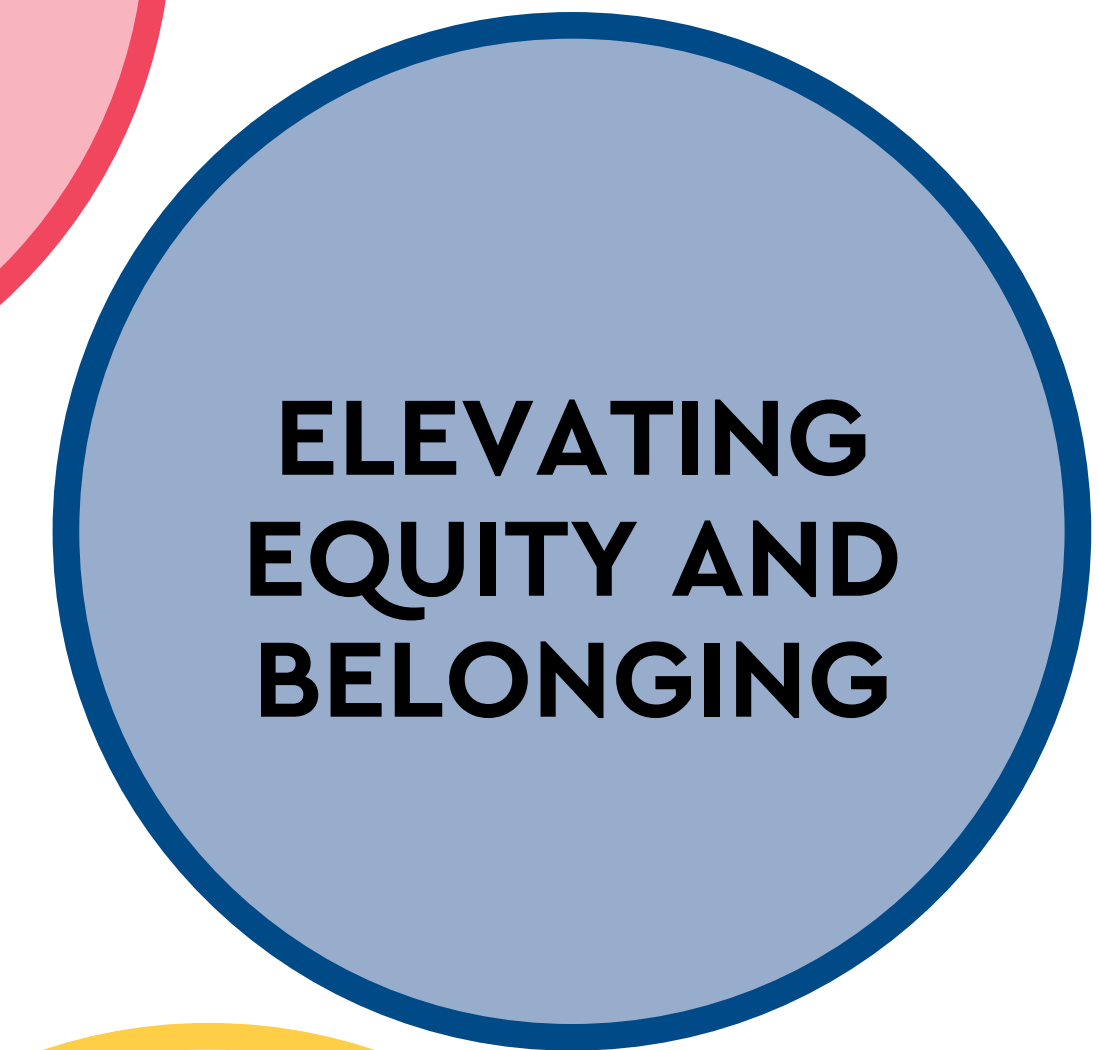


Understand the Island in the context of future city and connected park systems



Master Plan Lenses

High-level themes that are used to evaluate and compare outcomes and proposals within the dual workstream framework and identify gaps that need further consideration and study



Revealing an Indigenous Place

Big Ideas

Revealing an Indigenous Place

Elevating Equity and Belonging

Enhancing Visitor Experience

Supporting a Dynamic Environment

Improving Access and Connection

Ideas and Actions being considered:

1. Identifying dedicated space for ceremony

- A. Designate Snake Island as a formal ceremonial space, providing infrastructure and support for programs and uses

2. Identifying opportunities for naming and re-naming

- Consider opportunities to rename places of Indigenous significance
- Identify meaningful ways to incorporate Indigenous language into wayfinding, place names, and interpretation across the islands

3. Enhancing landings and gateways

- A. Integrate art and cultural markers to signal arrival on Indigenous land
- Identify opportunities to share protocols for respecting the land and water through interpretation and programming

Big Ideas

Revealing an Indigenous Place

Elevating Equity and Belonging

Enhancing Visitor Experience

Supporting a Dynamic Environment

Improving Access and Connection

Ideas and Actions being considered (cont.):

4. Integrating Storytelling and Interpretation throughout the park

- A. Create a Cultural Narrative Trail to provide a linked interpretive experience across the Island
 - Provide diverse settings for sharing Indigenous teaching moments

5. Identifying spaces for teaching, learning, and sharing Indigenous knowledge

- A. Create nodes along the Cultural Narrative Trail to share teachings and celebrate diverse Indigenous communities (e.g. 13 Grandmother Moons)
- B. Create a major gathering and celebration space in a key destination that includes winter access to provide opportunities for year-round interpretation and teaching (e.g. Big Spirit Moon Plaza)
- C. Create a flexible gathering and celebration space to support Indigenous and non-Indigenous programming in an open-air setting (Olympic Island Event Space)
 - Create teaching spaces across the Island to demonstrate Indigenous knowledge and land management practices

Big Ideas

Revealing an Indigenous Place

Elevating Equity and Belonging

Enhancing Visitor Experience

Supporting a Dynamic Environment

Improving Access and Connection

Ideas and Actions being considered (cont.):

6. Identifying opportunities and spaces to support Indigenous artists, craftspeople, food vendors, and broader businesses

- A. Provide dedicated space within Centre Landing Marketplace to accommodate frequent and occasional selling of food, crafts, and wares
- Simplify access to a variety of spaces and opportunities to attract and retain diverse Indigenous-operated businesses on the Island

7. Exploring opportunities for co-management

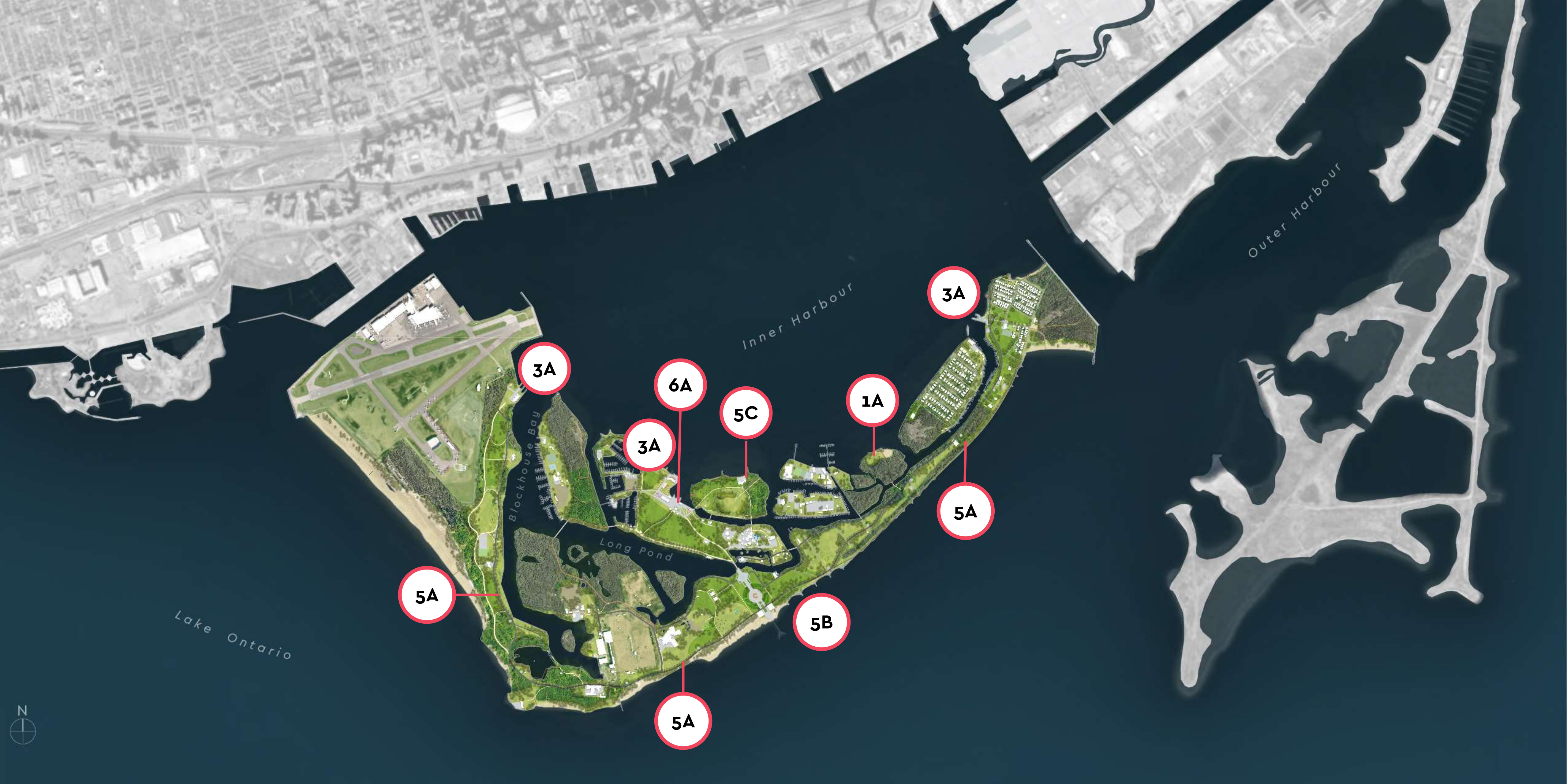
- Explore opportunities to operate tourism and transportation services for the Island
- Identify and promote opportunities to integrate art and cultural markers
- Explore opportunities to deliver programs for Indigenous and non-Indigenous visitors and operate permanent or pop-up businesses on the Island
- Identify opportunities to manage and restore natural environments of the Island



Mood Sketch: Ceremonial Space at Snake Island



Mood Sketch: Node along Cultural Narrative Trail



Elevating Equity and Belonging

Big Ideas

Revealing an Indigenous Place

Elevating Equity and Belonging

Enhancing Visitor Experience

Supporting a Dynamic Environment

Improving Access and Connection

Ideas and Actions being considered:

1. Relieving economic barriers

- Explore program opportunities to provide affordable access and activities for all ages, abilities, and incomes on the Island
- Reinvest in existing infrastructure and spaces to enhance affordable experiences and enjoyment of the park
- Provide affordable and diverse food options

2. Diversifying representation in Island businesses and programs

- Create a variety of spaces and opportunities to attract and retain diverse and under-served service providers to the Island
- Simplify park permit processes (e.g. BBQs and Fire Pits)
- Provide more picnic tables and shelters distributed through the park
- Implement Business Strategy recommendations to support diverse procurement and business operations

Big Ideas

Revealing an Indigenous Place

Elevating Equity and Belonging

Enhancing Visitor Experience

Supporting a Dynamic Environment

Improving Access and Connection

Ideas and Actions being considered (cont.):

3. Expanding opportunities for visitors experiencing disabilities to explore the park

- Encourage multi-sensory experiences within natural areas (such as quiet areas to encourage listening for wildlife)
- Provide accessible transportation to and from the island and throughout the park
- Provide accessible paths within natural areas and water access at beaches and within the water
- Create rest and gathering areas along pathways and access routes

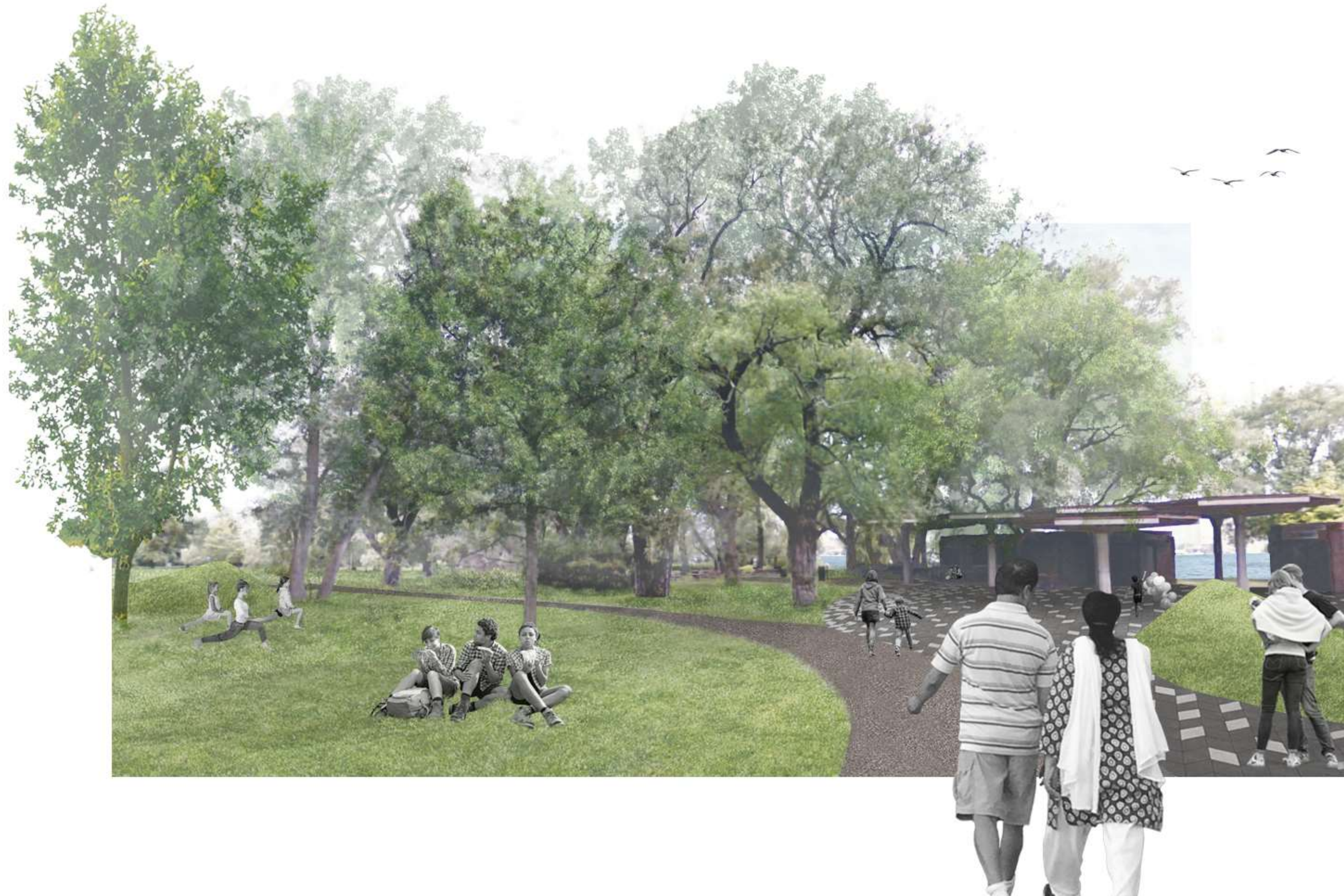
4. Encouraging strategic partnerships to promote access and programs

- Explore opportunities to enhance existing programs and partner with new service providers who specialize in affordable community programming
- Identify opportunities to revitalize and share existing island facilities and infrastructure to deliver complementary programs and improve access through partnerships through all seasons



Mood Sketch: Community Node

Enhancing Visitor Experience



Mood Sketch: Olympic Island Pavilion Revitalization



Mood Sketch: Gibraltar Point Pavilion in Summer



Mood Sketch: Gibraltar Point Pavilion in Winter



Mood Sketch: Revitalized and connected Eastern Channel Mooring Wall



Mood Sketch: Harbour Edge Activation

Big Ideas

Revealing an Indigenous Place

Elevating Equity and Belonging

Enhancing Visitor Experience

Supporting a Dynamic Environment

Improving Access and Connection

Ideas and Actions being considered:

1. Sharing information to help plan your visit

- Improve communication about how to get places and where to go (map)
- Provide useful and consistent wayfinding signage island-wide
- Expand infrastructure to support on-Island digital access to information
- Create accessible and scalable open spaces at arrival points and distributed throughout the park that can adapt to seasonal fluctuations, and special programming to deliver a consistent visitor experience and help plan your "Day on the Island"
- Provide clearer and friendlier access to information, both online and in-person at the ferries, landing and throughout the park using Island Ambassadors

2. Expanding opportunities for play and exploration for all ages and abilities

- Revitalize and expand existing play spaces across the islands
- Identify opportunities for new non-structured play elements (e.g. hammocks, landform)
- Identify opportunities to enhance existing sports offerings

Big Ideas

Revealing an Indigenous Place

Elevating Equity and Belonging

Enhancing Visitor Experience

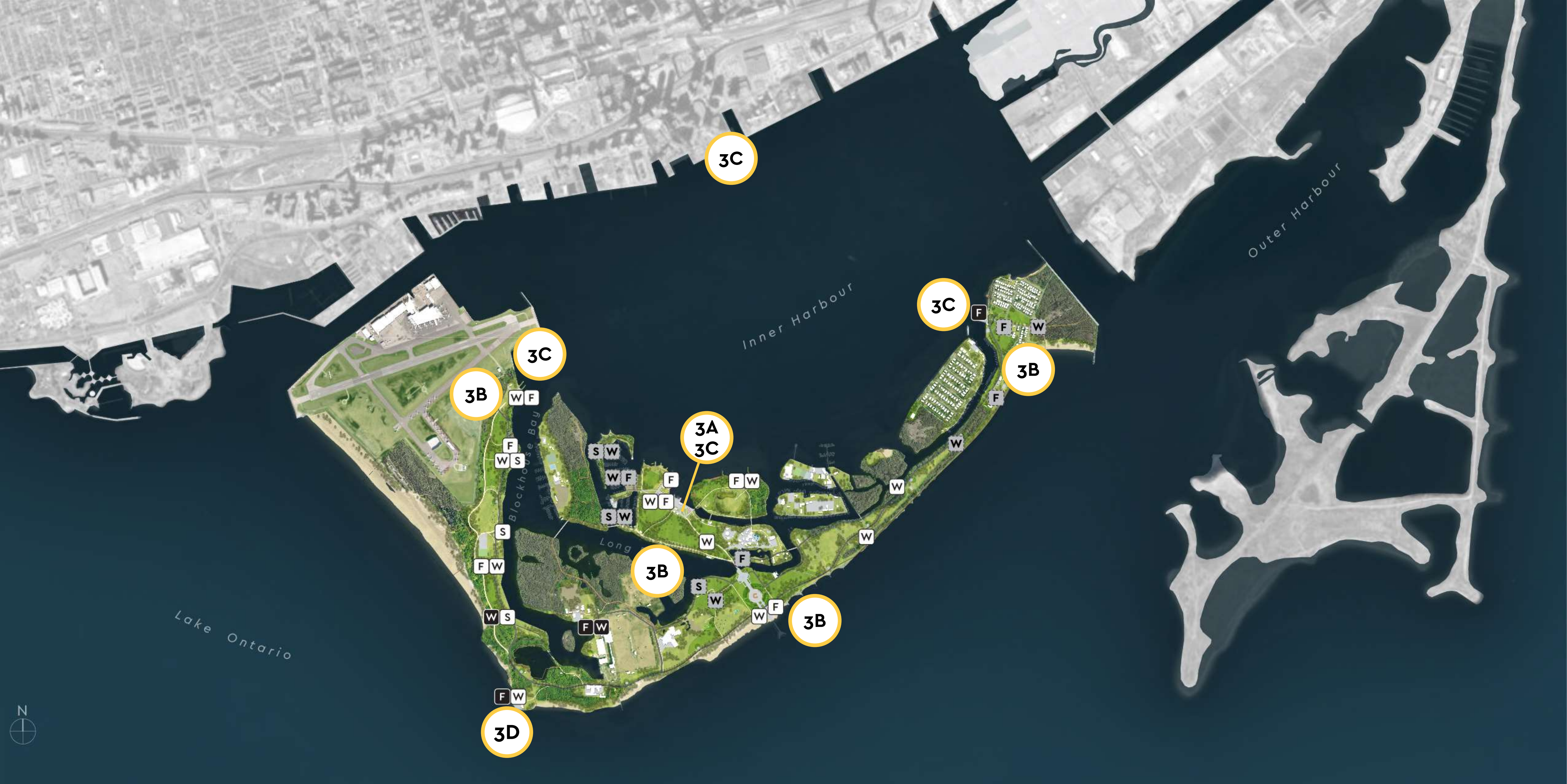
Supporting a Dynamic Environment

Improving Access and Connection

Ideas and Actions being considered (cont.):

3. Expanding opportunities for food, rental and retail

- A. Create a destination at Centre Ferry Landing to provide year-round visitor amenities and programming at Centre Island
- B. Create new rental opportunities for bikes, boats and beach equipment distributed throughout the park where people need them
- C. Revitalize ferry landings and gateways to provide a sense of arrival and amenities to address visitor's needs and requirements in peak and off-peak seasons
- D. Create new space at Gibraltar Point to promote Island-wide activity, embrace opportunities near the Lighthouse and Trout Pond and better connect Centre Island with the west side of the park



Big Ideas

Revealing an Indigenous Place

Elevating Equity and Belonging

Enhancing Visitor Experience

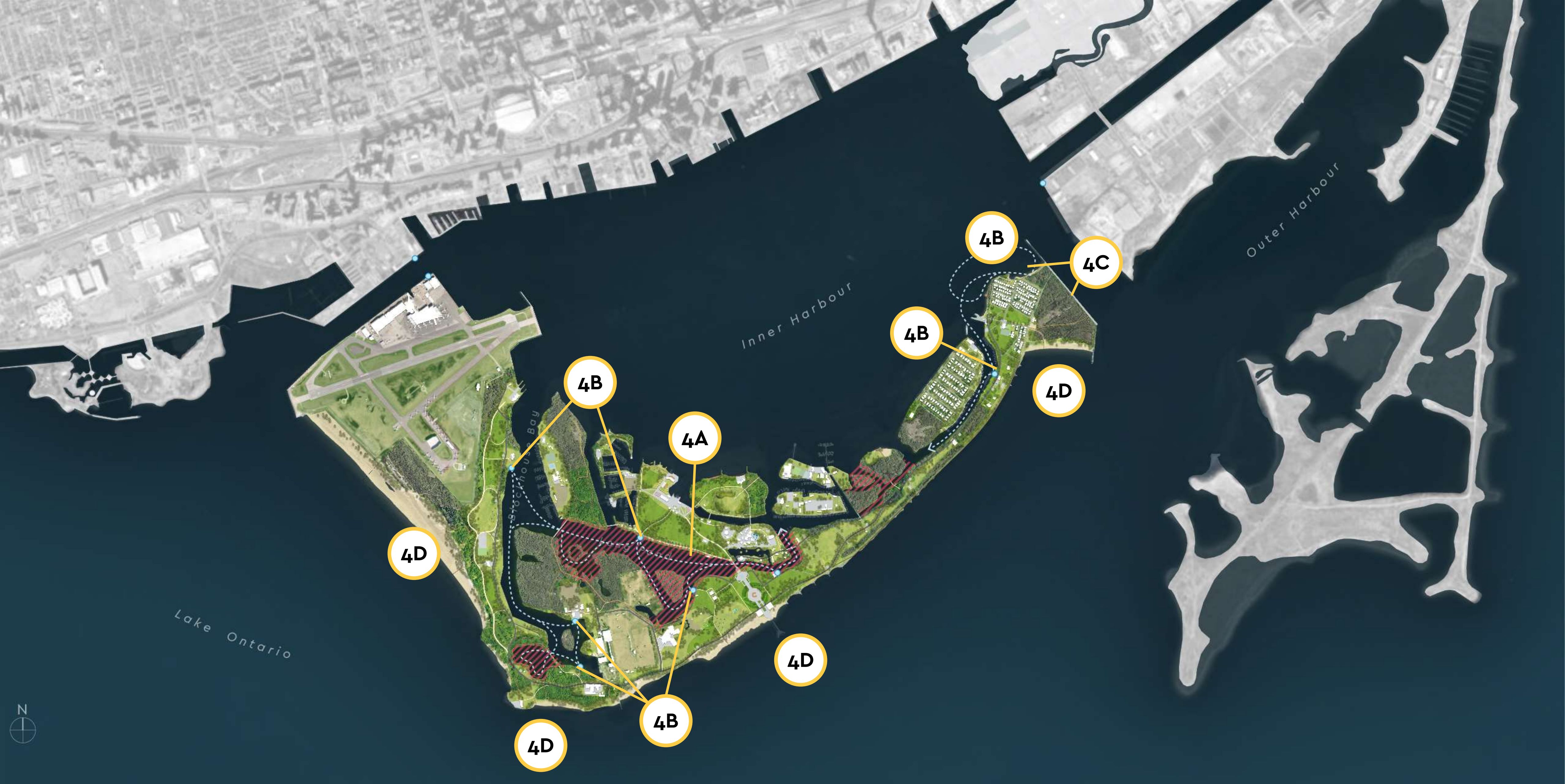
Supporting a Dynamic Environment

Improving Access and Connection

Ideas and Actions being considered (cont.):

4. Enhancing uses on water

- A. Promote Long Pond Non-Motorized Zone for safer paddling
- B. Expand locations for new water nodes with integrated short-term storage and rental opportunities for non-motorized watercraft across the islands
- C. Improve safe and universal access to the Cove and Eastern Channel mooring wall
- D. Improve swim experience on all beaches



Big Ideas

Revealing an Indigenous Place

Elevating Equity and Belonging

Enhancing Visitor Experience

Supporting a Dynamic Environment

Improving Access and Connection

Ideas and Actions being considered (cont.):

5. Enhancing uses on land

- A. Create dedicated welcoming spaces, or hubs, at all ferry landings to mark arrival, share information, orient visitors, and provide access to key facilities and amenities to start and end visits to the Island
- B. Formalize infrastructure to support event space at Hanlan's Point (e.g. landform, amphitheatre)
- C. Create affordable overnight camping along a portion of the Hanlan's Mooring Wall and north of Trout Pond to take advantage of existing facilities nearby
- D. Revitalize Olympic Island to mitigate flooding and restore pavilion and structures to celebrate and enhance views of the city skyline
- E. Expand Hanlan's Beach clothing optional area
- F. Enhance and revitalize existing structures across the islands to create spaces for gatherings of various sizes in all seasons
- G. Identify opportunities for new structures, warming shelters and winterized washrooms associated with new and existing circulation routes and activity hubs to support year-round use of island facilities



Big Ideas

Revealing an Indigenous Place

Elevating Equity and Belonging

Enhancing Visitor Experience

Supporting a Dynamic Environment

Improving Access and Connection

Ideas and Actions being considered (cont.):

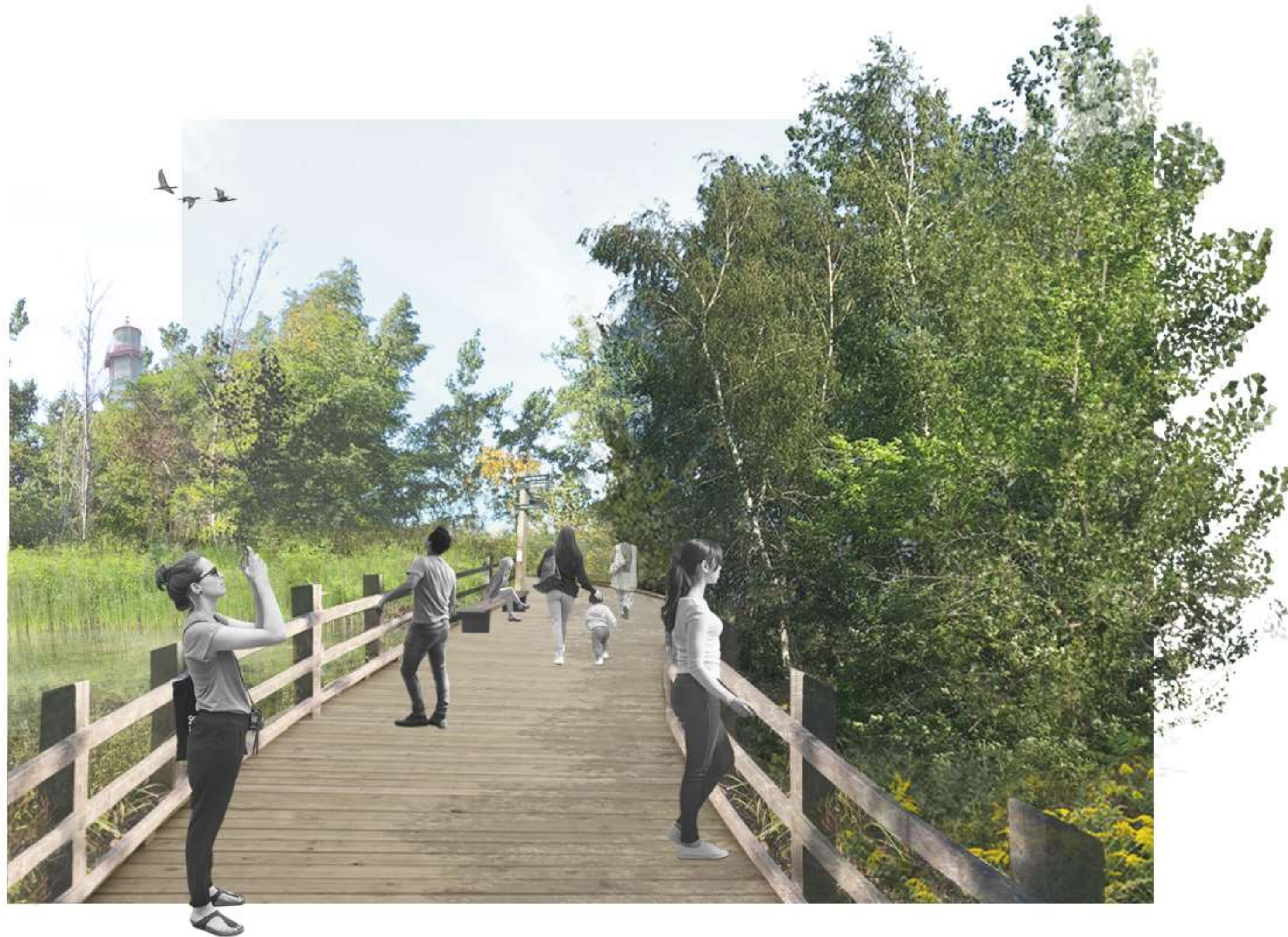
6. Sharing all the Island stories

- Enhance online information and storytelling
- Expand Wayfinding island-wide
- Curate Narrative Trail and loops / lookouts
- Identify and share history and cultural heritage of the entire Island
- Establish strategy for Cultural markers and flags in alignment with City policy

7. Celebrating the role of art in placemaking

- Identify opportunities to partner with existing Island establishments to deliver programming and enhance existing offerings
- Explore opportunities to deliver seasonal, year-round, and permanent installations
- Identify opportunities for installations, projects, and programs at varying scales to suit sites, expertise, and capacities of partners

Supporting a Dynamic Environment



Mood Sketch: Controlled Access Boardwalk within Natural Areas



Mood Sketch: Paddling on the Internal Waterways

Big Ideas

Revealing an Indigenous Place

Elevating Equity and Belonging

Enhancing Visitor Experience

Supporting a Dynamic Environment

Improving Access and Connection

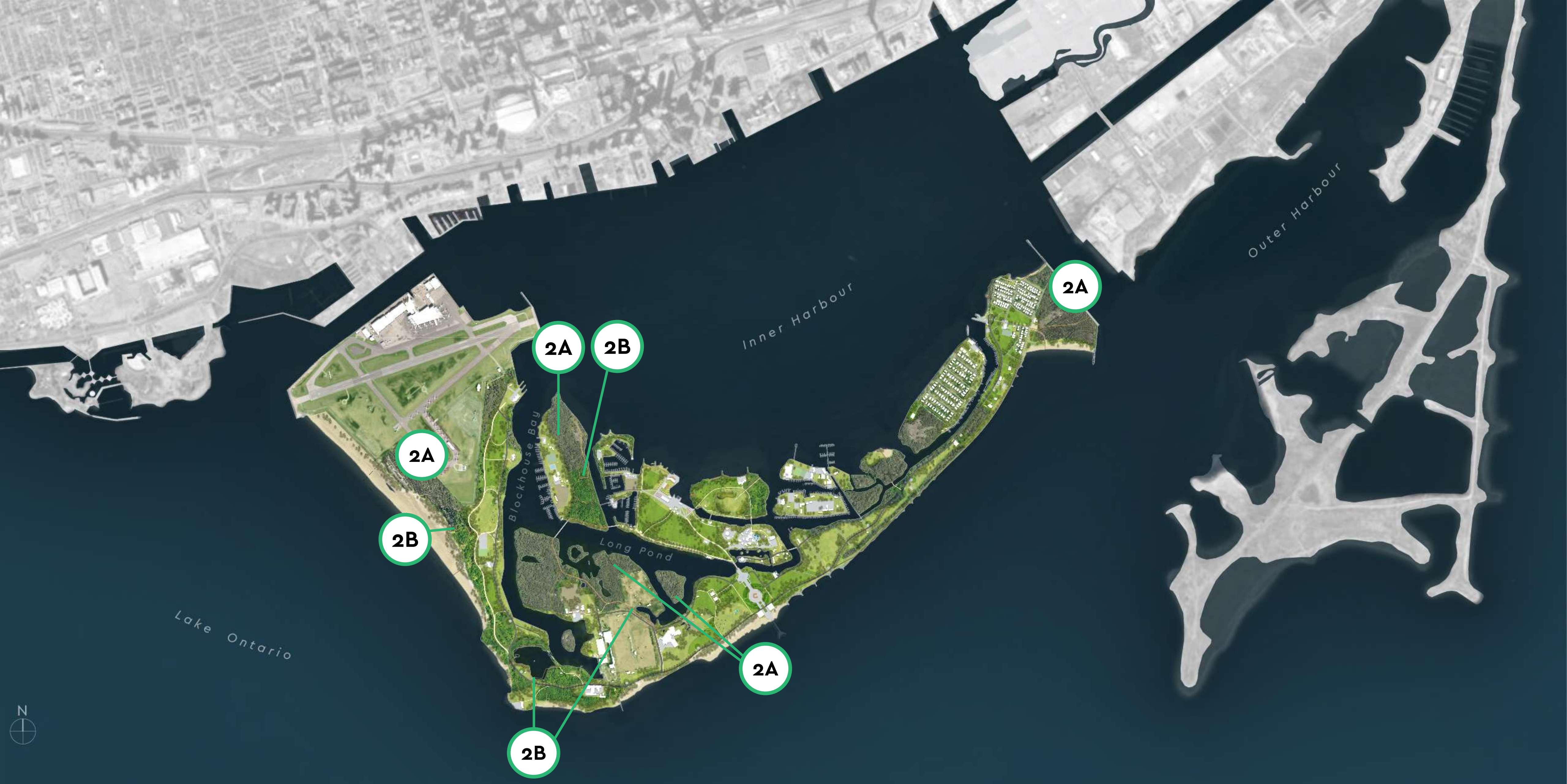
Ideas and Actions being considered:

1. Promoting stewardship and resilience

- Better engage Island residents and others as champions and partners in the management, activation, and advocacy of the park
- Develop Island Charter to help communicate Island etiquette towards use and behaviour that benefits long term vision for the islands
- Develop a Coordinated Landscape Resource Management Plan
- Identify opportunities to partner with and promote existing and planned City and TRCA restoration initiatives, including ecological enhancements of specific areas and future flood mitigation measures

2. Enhancing protection of the natural environment

- A. Identify "no-go" areas to protect sensitive habitats
- B. Identify opportunities for planned seasonal access and closures to support ecosystem function and health and protect habitats during nesting seasons



Big Ideas

Revealing an Indigenous Place

Elevating Equity and Belonging

Enhancing Visitor Experience

Supporting a Dynamic Environment

Improving Access and Connection

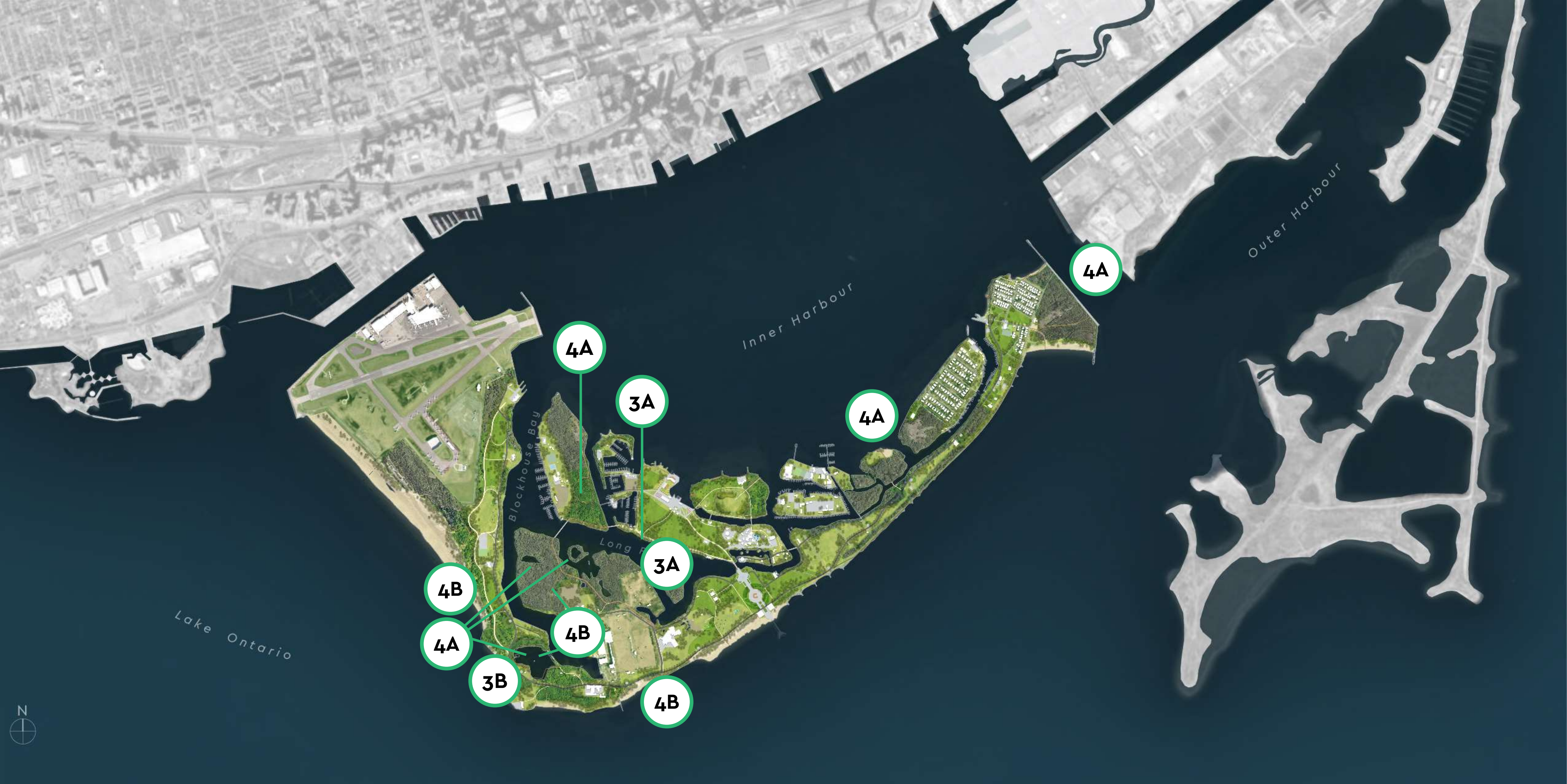
Ideas and Actions being considered (cont.):

3. Improving access to natural heritage

- A. Create Lagoon Loop pathway connection to provide controlled access and integrate undervalued natural areas of the park and support Long Pond Non-Motorized Zone through use of bridges as physical barriers to large watercraft
- B. Develop Trout Pond Boardwalk to communicate and advocate for the value of diverse habitats both on land and water

4. Sharing the importance of the Island's natural history

- Investigate and communicate ecological integrity of the Islands through comprehensive and on-going natural heritage and ecological assessments
- A. Curate programs and teaching about importance, function, and management of significant areas specific to Toronto (ESAs), as well as provincially significant areas (ANSIs and PSWs) with PFR staff and external partners as part of a larger curated approach
- B. Develop interpretive elements to share information about habitat and ecosystems on the Island that are area- and habitat-specific promoting protection



Big Ideas

Revealing an Indigenous Place

Elevating Equity and Belonging

Enhancing Visitor Experience

Supporting a Dynamic Environment

Improving Access and Connection

Ideas and Actions being considered (cont.):

5. Enhancing visitor experience in nature

- Expand access to online information about programming and events, trip planning and wayfinding through park website and partner communications
- Develop wayfinding strategy that builds on existing standards and contributes to a consistent and informative experience across the islands and city-wide.
- Integrate interpretation of ecological, social, and historical character of the Island within narrative trails and themed loops
- Create opportunities for multi-sensory experiences (sound, texture, scent) within natural heritage areas for visitors experiencing disabilities and those wanting to explore alternate ways of engaging with nature

Improving Access and Connection



Mood Sketch: Boardwalks outside of ESAs



Mood Sketch: Multi-modal access on Park Path

Big Ideas

Revealing an Indigenous Place

Elevating Equity and Belonging

Enhancing Visitor Experience

Supporting a Dynamic Environment

Improving Access and Connection

Ideas and Actions being considered:

1. Improving (Water) Transportation to the Island

- Improve Ferry frequency and align with programming and events
 - A. Provide year-round access to Centre Landing to support expanded programming and seasonal offerings with complementary on-Island transportation to support in all seasons
 - B. Enhance Ferry landings to support Ferry Fleet replacement, improved accessibility, sustainability, flood mitigation and improved visitor amenities
 - C. Provide dedicated servicing ferry from the Port Lands to eliminate vehicle and pedestrian mixing at Jack Layton Ferry Terminal.
 - D. Create a Water Shuttle network to provide new predictable connections to destinations across the waterfront and islands
 - E. Enhance access to short-term docking and servicing for personal watercraft





Big Ideas

Revealing an Indigenous Place

Elevating Equity and Belonging

Enhancing Visitor Experience

Supporting a Dynamic Environment

Improving Access and Connection

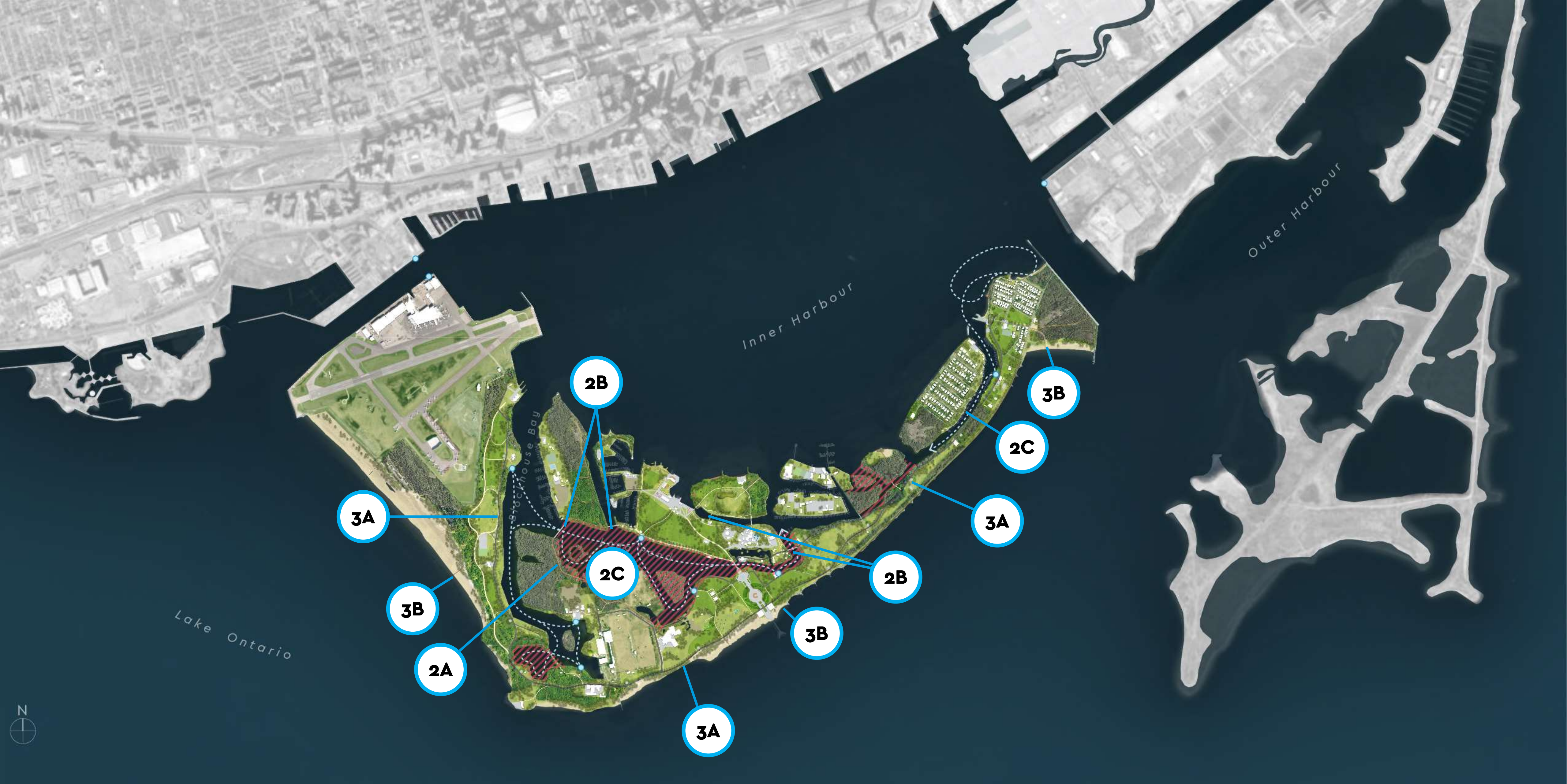
Ideas and Actions being considered (cont.):

2. Improving Circulation on the Island

- A. Expand pedestrian trail networks to support expanded and intensive uses
- B. Consider new pedestrian bridges within the park at key points to improve accessibility across the islands
- C. Create opportunities to use the internal waterways to move through and experience the park through water nodes and enhancement of rental opportunities
 - Enhance wayfinding with new signage on land and water and digital information sharing

3. Enhancing Accessibility

- A. Provide Accessible Tram service to all ferry landings and stops at key destinations across the island
- B. Provide accessible connections to existing spaces (beaches, in-water, ESAs)
 - Create integrated rest areas within new pathway system and along existing routes
 - Explore opportunities for digital wayfinding including curated interpretation and signage elements at key locations





While this plan does not exclude the potential of future bridge and tunnel connections between the city and the Island, the reality of an operational airport and shipping port at both ends of the park meant the improvements of this master plan needed to focus on options that could be executed in the near-term with both areas and existing operations remaining functional.

Join Us – [Toronto.ca/IslandMasterPlan](https://toronto.ca/IslandMasterPlan)



Open House

March 1, 2022
6 p.m. – 9 p.m.



Enhancing Visitor Experience

Deep Dive

March 3, 2022
6 p.m. – 9 p.m.



Supporting a dynamic environment

Deep Dive

March 7, 2022
6 p.m. to 8 p.m.



Improving access and connection

Deep Dive

March 10, 2022
6 p.m. to 8 p.m.



Indigenous Sharing Meeting

Mar 9, 2022
6:30 p.m. to 8:30 p.m.



Demonstration Plan Survey

March 7 – 25 2022

Important Links

Web Page: <https://toronto.ca/IslandMasterPlan>

Island Stories: <https://toronto.ca/IslandStories>



Your insights and comments are appreciated!

Thank you!