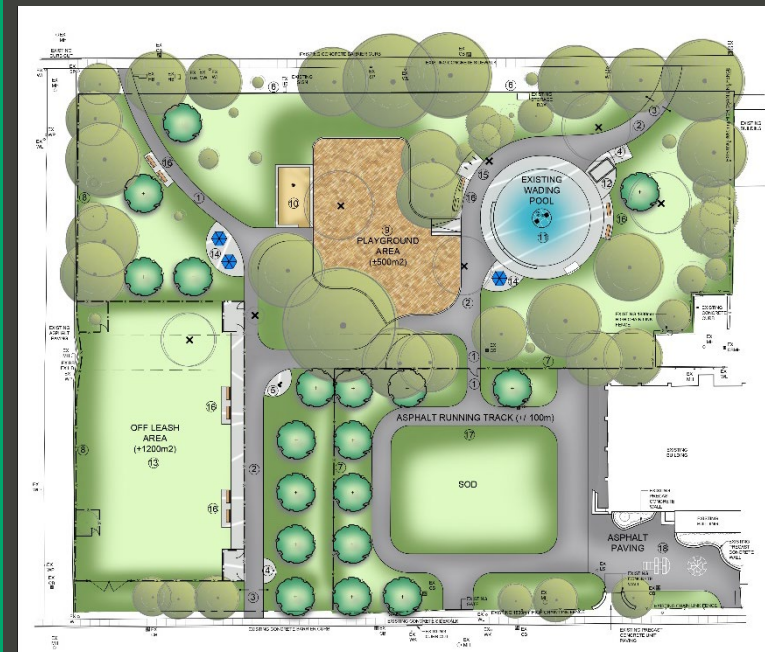
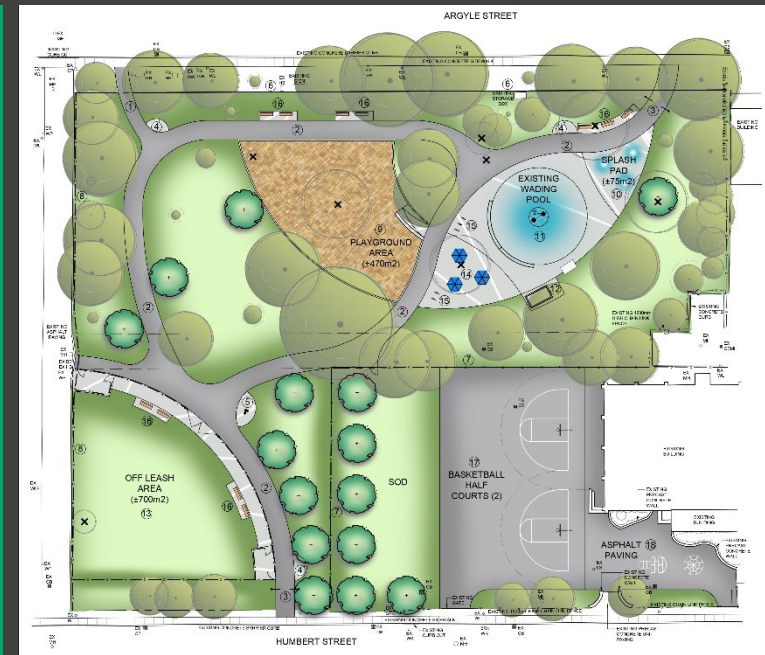


Osler Playground Park Improvements

Concept Design Focus Group
January 13, 2022



Land Acknowledgement

We acknowledge the land we are meeting on is the traditional territory of many nations including the Mississaugas of the Credit, the Anishnabeg, the Chippewa, the Haudenosaunee and the Wendat peoples and is now home to many diverse First Nations, Inuit and Métis peoples. We also acknowledge that Toronto is covered by Treaty 13 with the Mississaugas of the Credit.



Agenda



Introductions



Project Team Presentation

- Meeting Tips & Goals
- Project Background
- Public Engagement to date
- Concept Design Options Overview



Guided Discussion:

- Deep Listening Exercise
- Trade-Offs Exercise
- Sense Making (Group Discussion)

thank
you!

Next Steps + Adjourn

City of Toronto - Parks, Forestry & Recreation Staff:

- Rachel Weston – Senior Project Coordinator
- Pablo Muñoz - Senior Public Consultation Coordinator
- Daniel Fusca – Public Consultation Manager

Design Consultant:

- April Szeto – Principal Landscape Architect, Harrington McAvan LTD



Meeting Tips & Goals

Daniel Fusca, City of Toronto

Rules of Engagement for a Successful Virtual Meeting



Mute your microphone when not speaking.



Computer audio issues? Use your cell-phone for audio by clicking Audio Connection, Switch Connection, then "Call Me".



Use the chat feature to ask questions. Or click the hand icon, beside your name from the participants list on the right.



One voice at a time. If you can, direct questions to specific speakers.



How to Participate: Raise your hand or use the chat

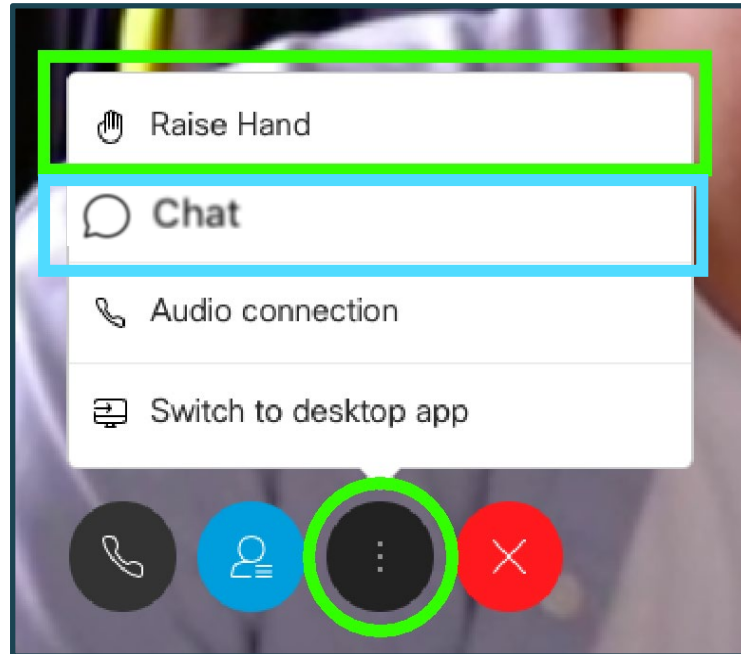
To ask a question and share feedback, you can virtually raise your hand.

IF YOU ARE
USING A
COMPUTER



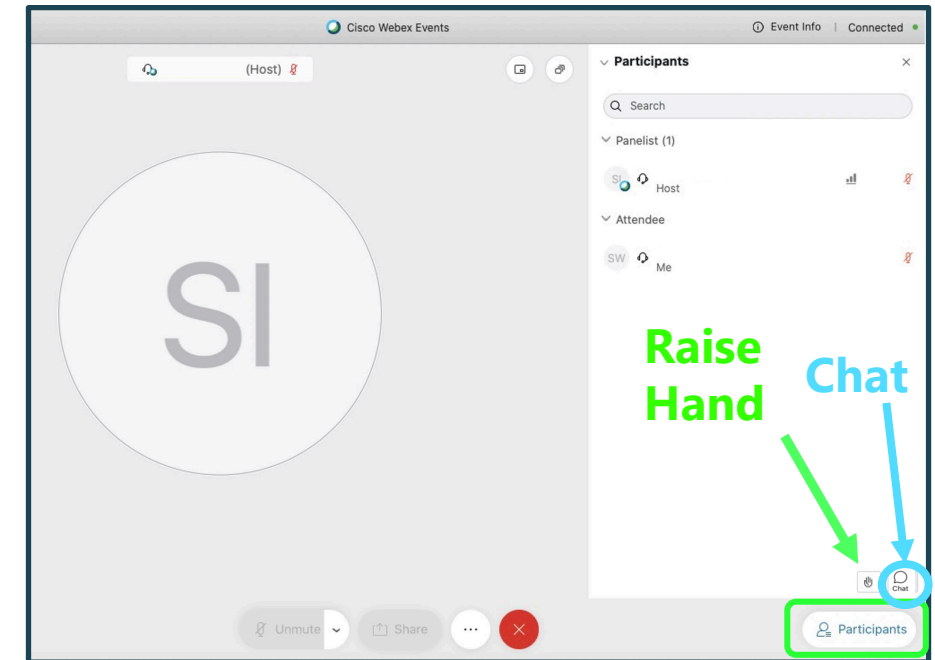
Via the internet browser

Click the "..." button at the bottom of the video window and select "Raise Hand" or "Chat".



Via the Webex App

Click the Participants button at the bottom of the video (the Participants panel will open to the right). Then click the "Raise Hand" or "Chat" button at the bottom right.



How to Participate: Raise your hand or use the chat

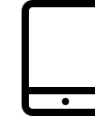
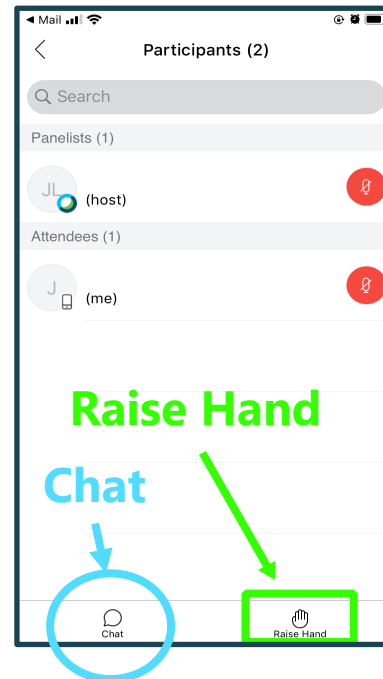
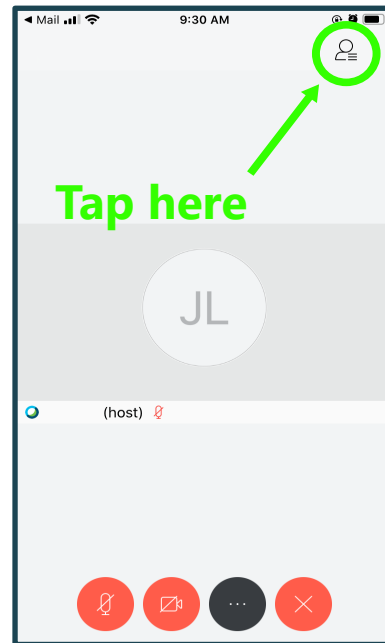
To ask a question and share feedback, you can virtually raise your hand or ask a question in the chat.

IF YOU ARE
USING A
SMARTPHONE
OR TABLET



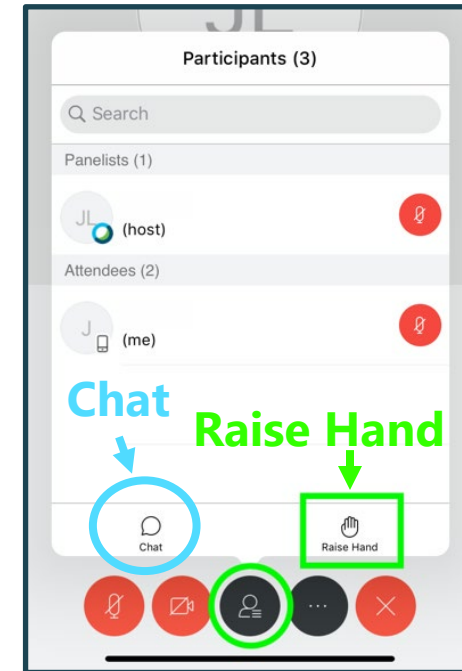
For smartphones

Click the Participants panel button at the top right corner of the screen. Then click "Raise Hand" or "Chat" at the bottom right of the screen.




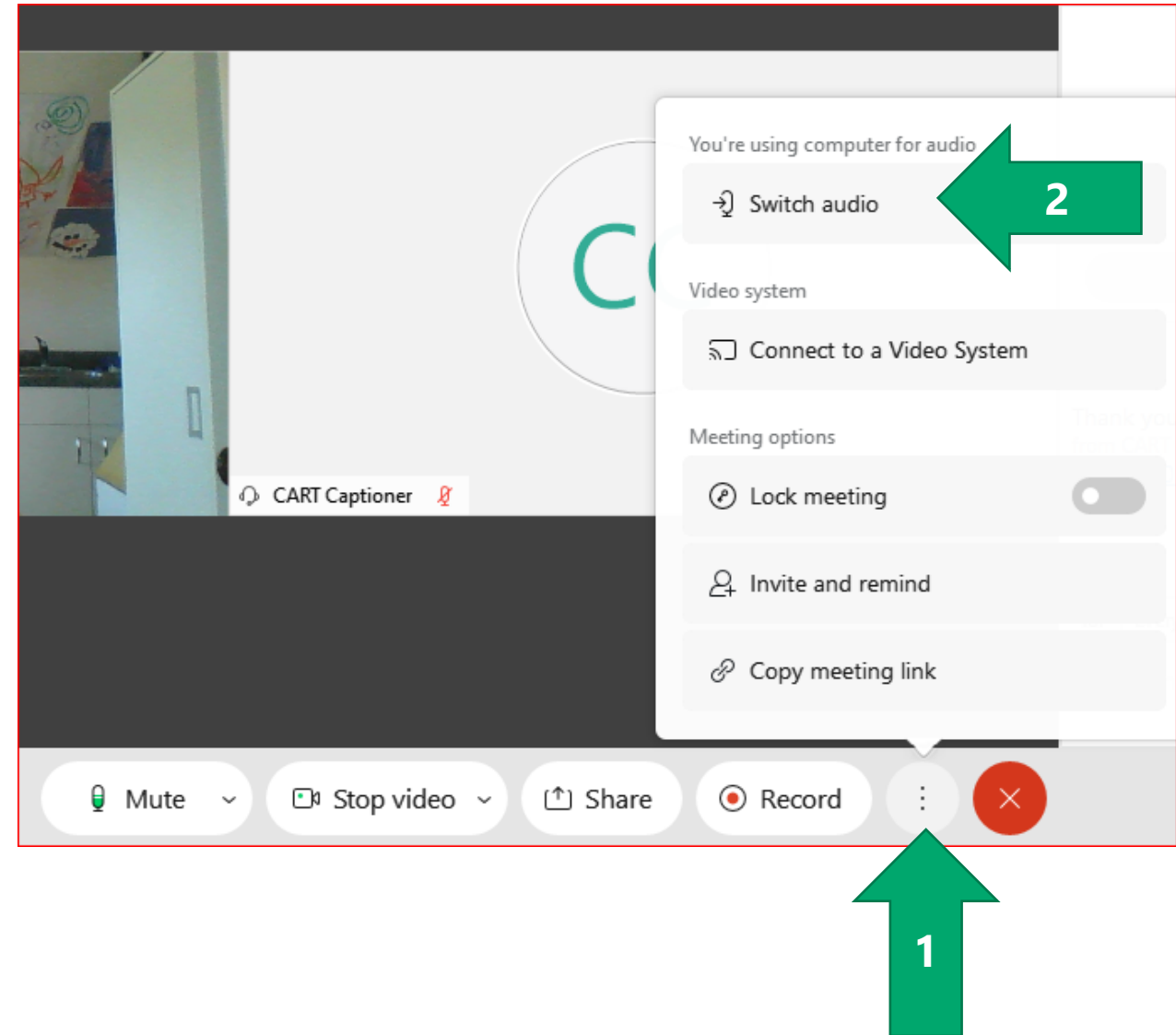
For tablets

Click the Participants panel button at the bottom of the screen. Then click the "Raise Hand" or "Chat" button at the bottom right.



Webex Audio Trouble?

1. Click the **More Options** button at the bottom of the screen 
2. Click **Switch Audio**
3. Use the **Call me at** function
 - a) Enter your phone number
 - b) Webex will call your phone (no long distance charges)



- Allow everyone the chance to speak.
- Listen respectfully, without interrupting
- Listen actively and try to understand others' views
- Criticize ideas, not individuals
- Commit to learning, not debating.



Meeting Goals

- 1 Review project background and consultation outcomes to date
- 2 Hear from all participants about their needs and priorities for the park amenities
- 3 Gather feedback to help unstick the process and advance a design solution that will benefit **all** park users and that everyone can accept

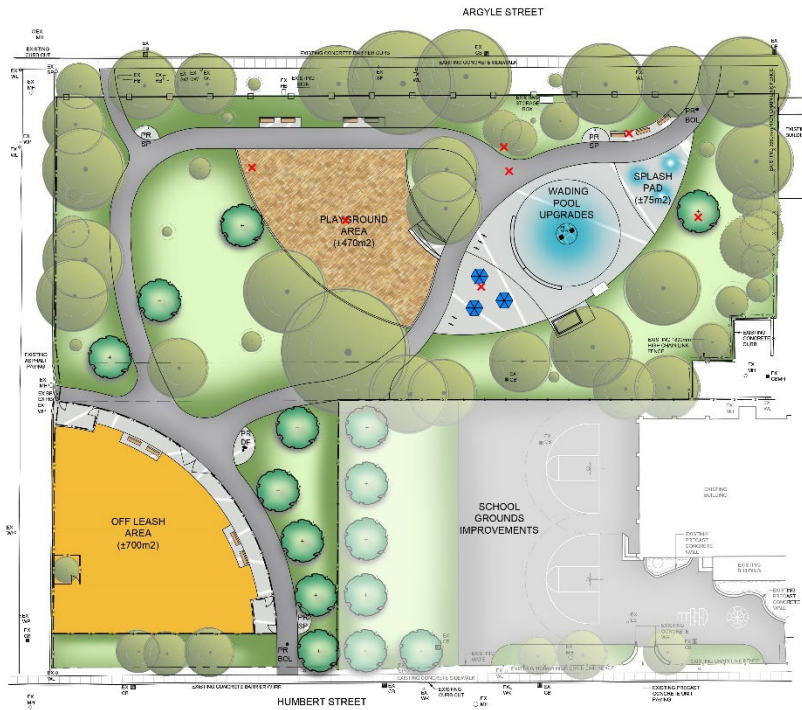


A note about the modified Civic Lottery



Concept Design Options

Concept One



Concept Two



Concept Three



Project Background

Rachel Weston, City of Toronto

On March 26, 2018, City Council directed the General Manager of Parks, Forestry and Recreation to:

- work in consultation with the local Councillor toward the construction of a dogs off-leash area in Osler Playground.
- undertake a planning exercise for general park improvements.

What's in scope for this project?

Park improvements:

- A new Dogs off-leash area
- Playground enhancement
- Waterplay area enhancement
- Greenspace improvements
- Pathways improvements
- New Seating



School ground improvements:

- to be determined with school board
- new recreational amenities will be accessible to community after school hours

What's not in scope for this project?

- **Amenities that overlap park and school ground properties - including off-leash area:** school board requires delineation of school grounds with fencing for safety reasons and for other operational reasons
- **Washroom Building** – due to budget and space restrictions
- **Separate small and large dog areas in Off-Leash Area** – also due to space restrictions

Existing Park Property

-  School boundary
-  Park boundary



Park Context

Nearby Parks


- 5-minute walk from Osler Playground
- 10-minute walk from Osler Playground
- ▣ Osler Playground



Park Context

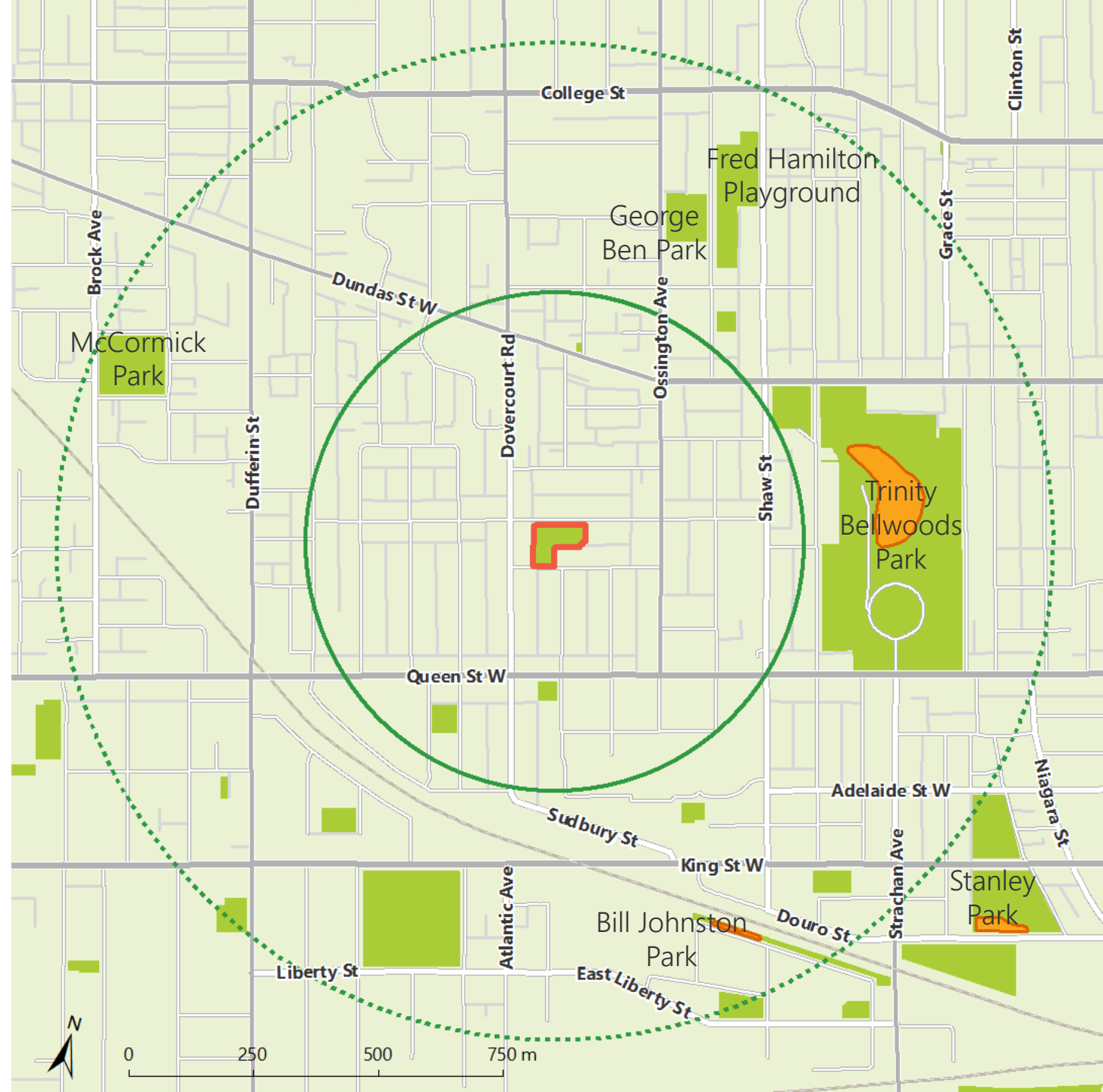
Nearby Off-Leash Areas

 Dogs Off-Leash Areas

 5-minute walk from Osler Playground

 10-minute walk from Osler Playground

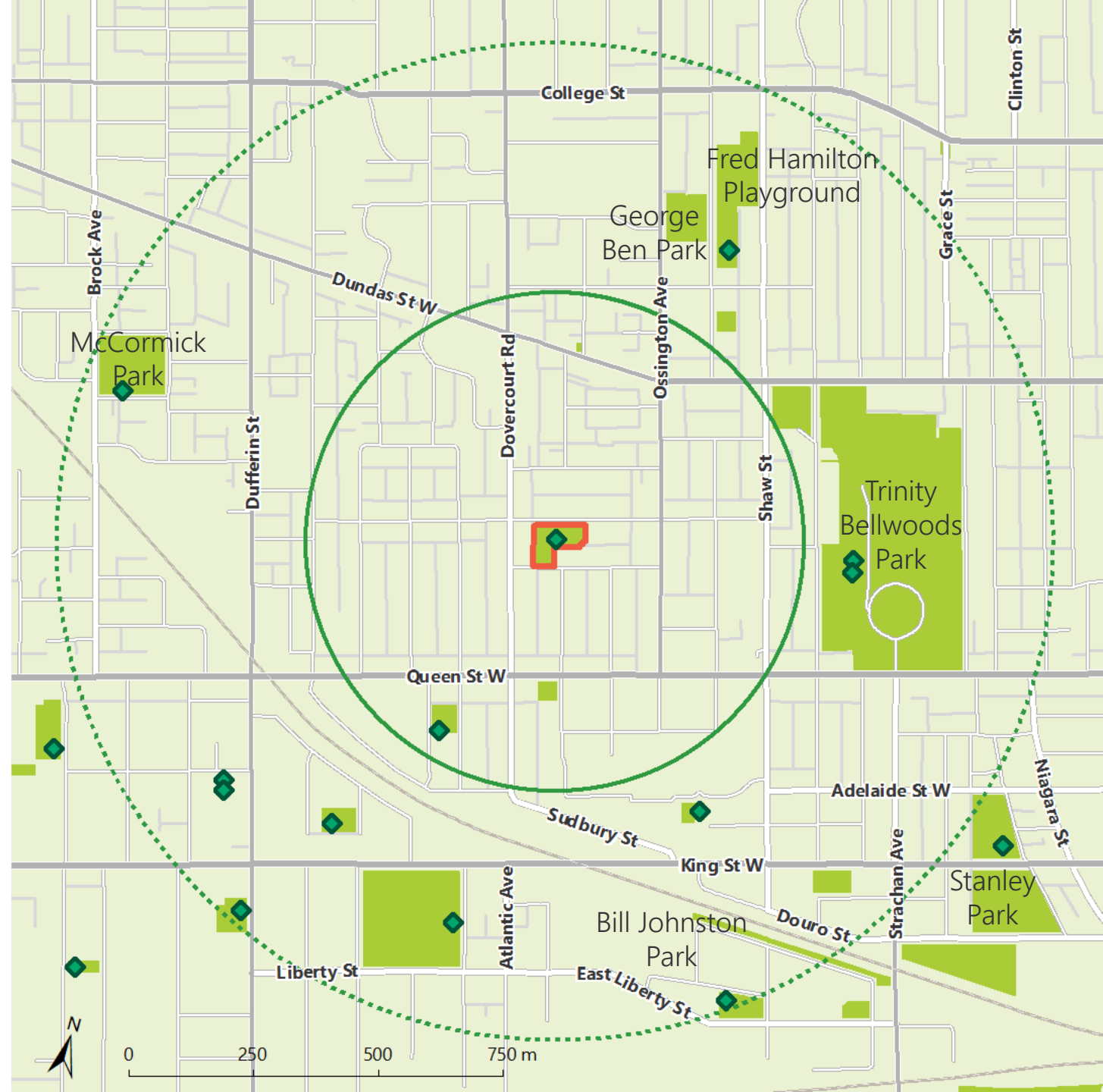
 Osler Playground



Park Context

Nearby Playgrounds

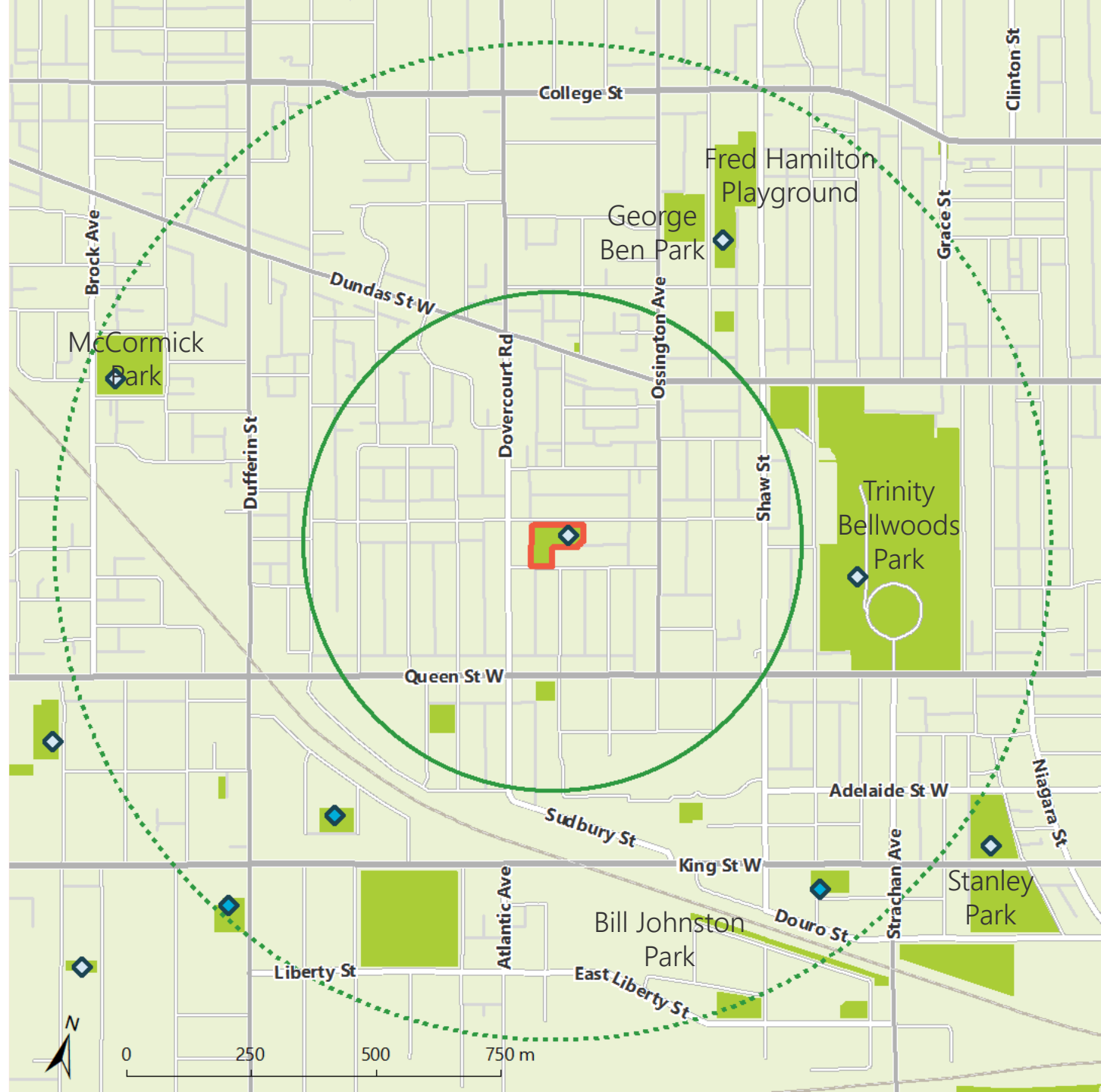
- ◆ Playground
- 5-minute walk from Osler Playground
- ⋯ 10-minute walk from Osler Playground
- ▣ Osler Playground



Park Context

Nearby Waterplay Areas

- ◆ Splash/Spray Pad
- ◇ Wading Pool
- 5-minute walk from Osler Playground
- ⋯ 10-minute walk from Osler Playground
- ▣ Osler Playground



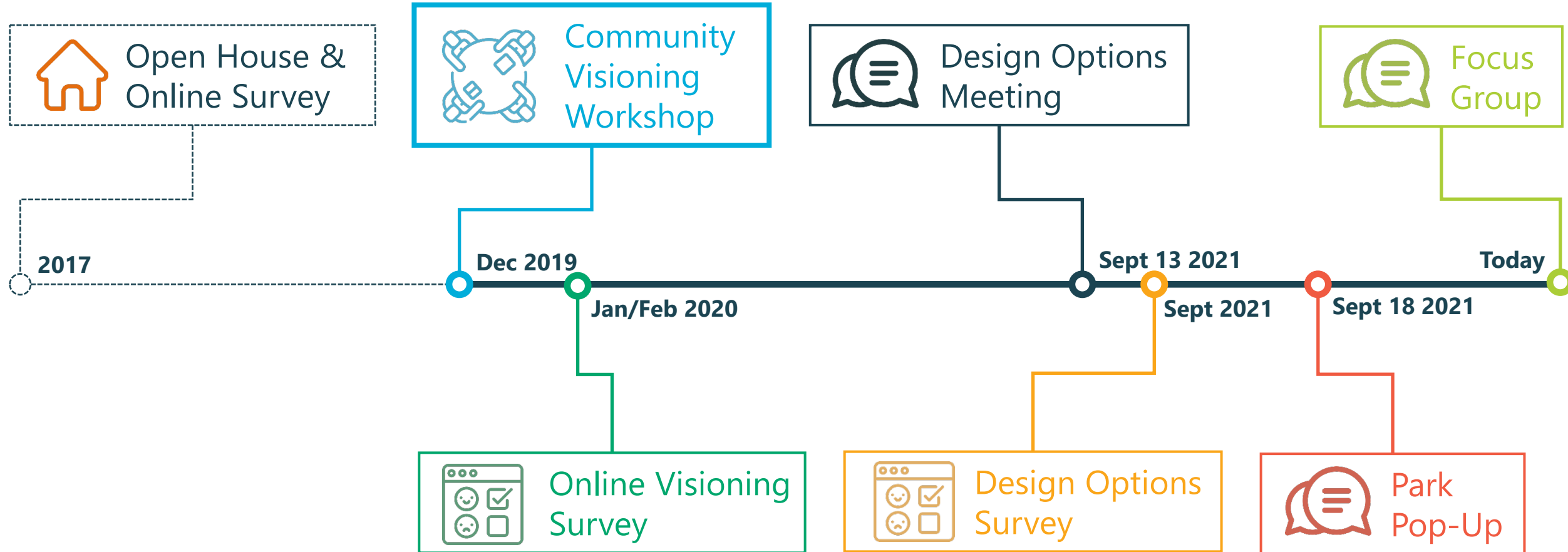
Project Timeline



Public Engagement To Date

Daniel Fusca, City of Toronto

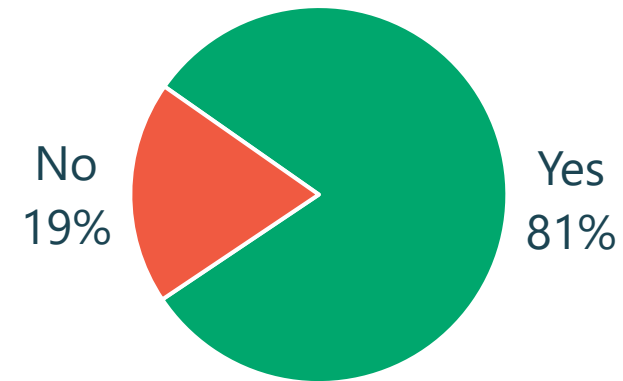
Engagement To-Date



2017 – Open House + Survey: Identified Priorities

- ① Add a dogs off-leash area
- ② Enhance the playground
- ③ Add benches, seating and picnic tables
- ④ Address drainage issues at the west side of the park
- ⑤ Maintain green space
- ⑥ Add ball sports area

Would you support the installation of a fenced off-leash area?

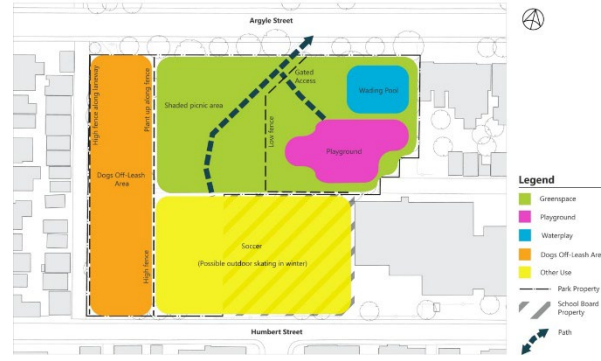


2019 - Community Visioning Workshop

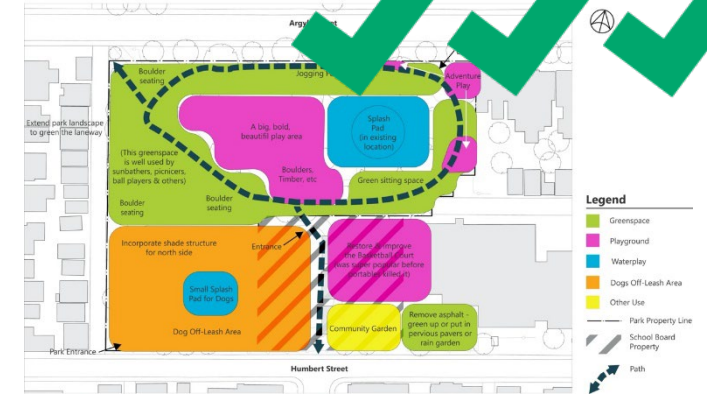
1



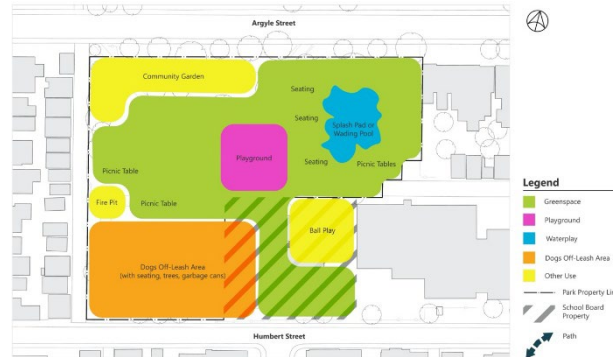
3



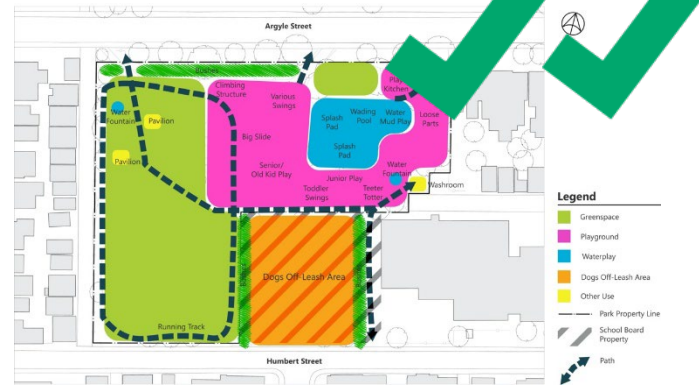
5



2



4



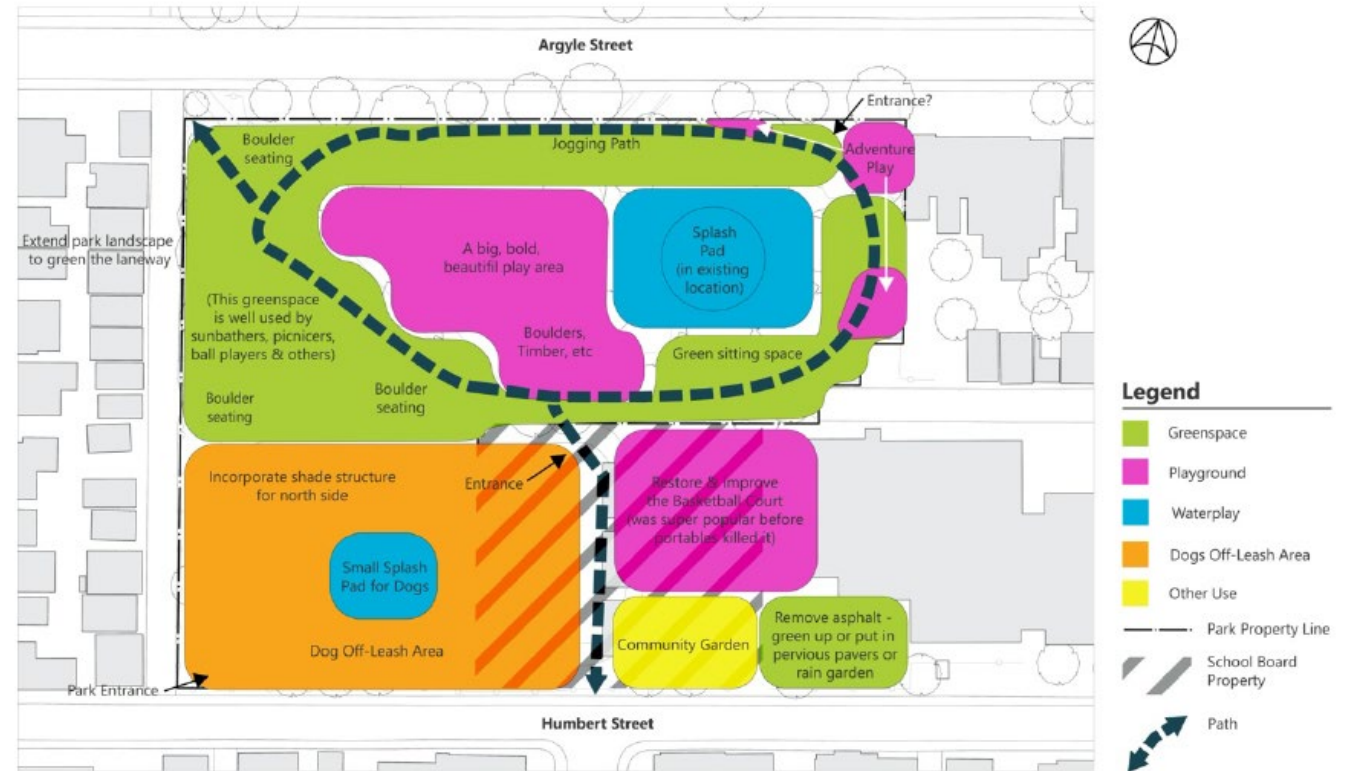
6



Preferred Community Vision #5 Highlights:

- Similar layout and balance to the existing park with the addition of the following:
 - New splash pad in place of the wading pool and in OLA
 - New Park entry points
 - A pathway loop
 - Natural features incorporated into the playground and park
 - Pathway connection to Humbert Street
 - Basketball courts and community garden on school grounds

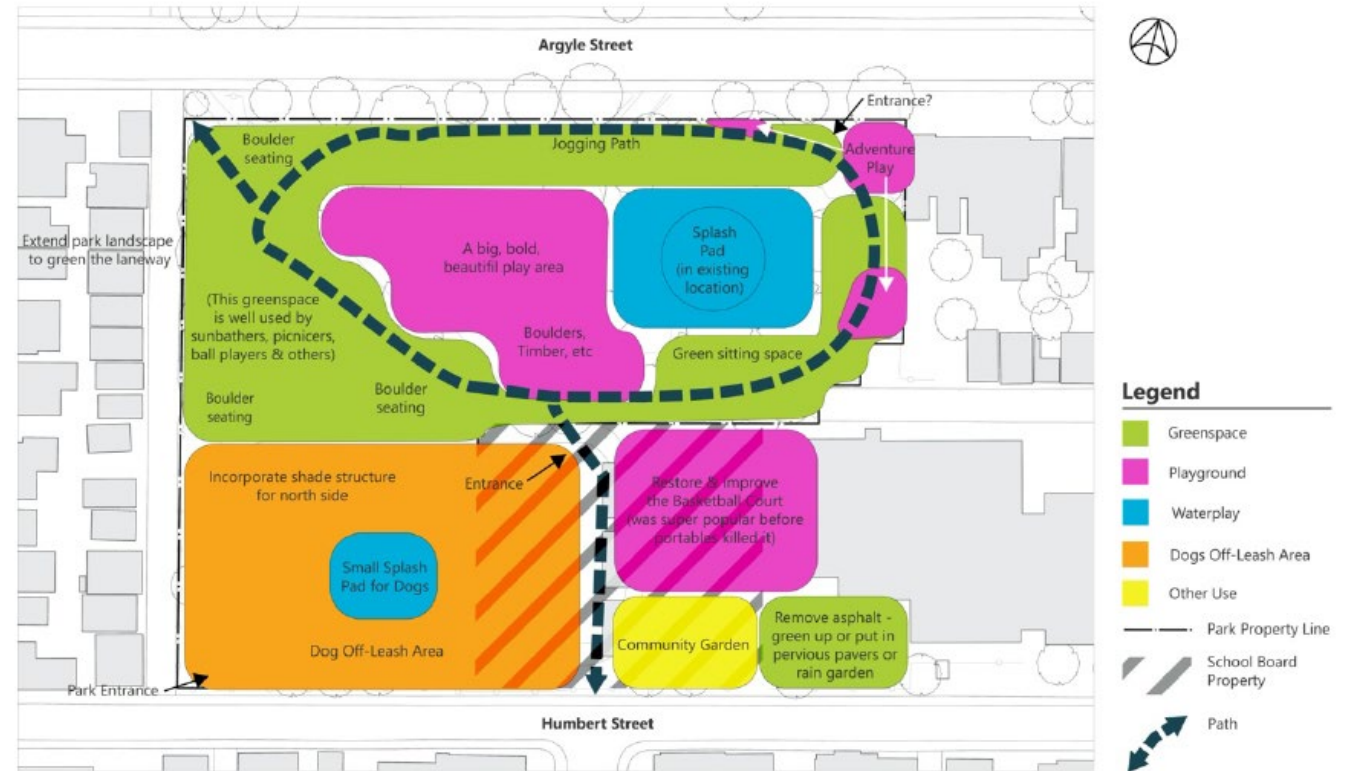
Community Vision 5



Preferred Community Vision #5 Highlights:

- Some design issues with this option:
 - Off-Leash Area (OLA) extends into School Grounds
 - Potential maintenance and safety concerns with small splash pad within the OLA
 - Park pathway entrance to Humbert Street crosses through School Grounds

Community Vision 5



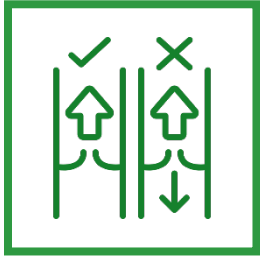
Secondary Feedback from 2020 Survey



**Balance Park
Uses**



**Include a running
track/loop**



**Better
Pathways and
Connections**



**Keep It
Shady**

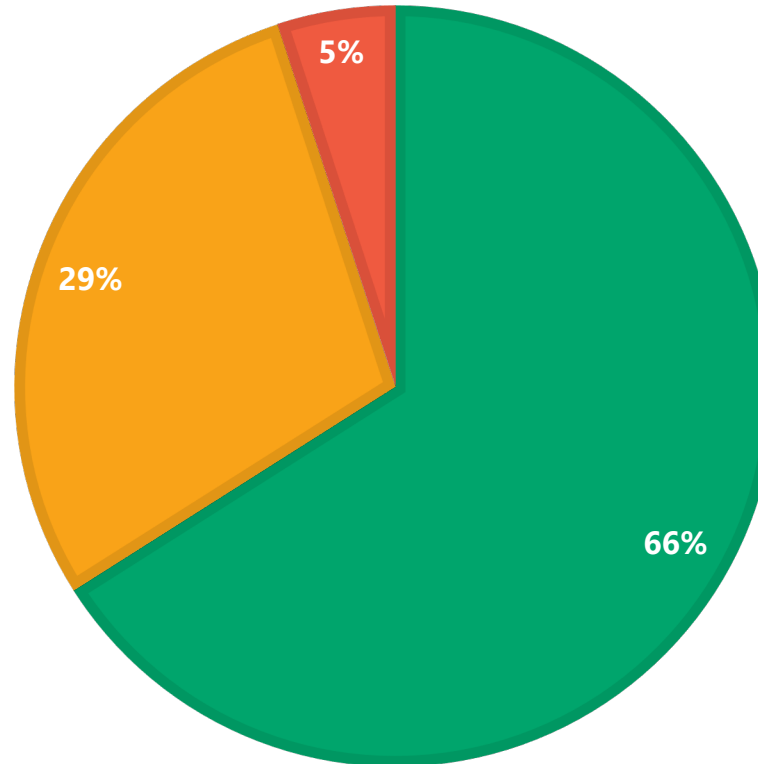


**Smaller, fenced
OLA appropriate**

Secondary Feedback from 2020 Survey

SPLASHPAD VS WADING POOL

■ combination splashpad and wading pool ■ splashpad only ■ wading pool only



What changed after 2020?

- Anticipated implementation timelines were impacted by the pandemic.
- We learned that we could not have amenities that overlap both the park and school grounds (i.e. off-leash area, running track), because:
 - the school grounds need to be fenced for safety of students, and
 - Park and school amenities need to be separate so that maintenance responsibilities can be clearly delineated between organizations

2021 - Concept Design Options Public Meeting

- **Meeting Attendees: 84**
- **Key Feedback:**
 - In general there was disagreement between attendees on what the priority (biggest area) of the park should be, whether Off Leash Area or Playground.
 - Some attendees found that all concept design options had too small of an Off Leash Area and some attendees found that all concept designs had too big of an Off Leash Area.
 - Concern expressed by some about conflicts between dog owners and other park users
 - Concern expressed by some about lack of open lawn area in all concept plans
 - Some attendees expressed that they favoured Concept 3 because it provided a good balance between playground and off leash area.

2021 - Concept Design Options Pop-Up Engagement

Pop-up Attendees: 50+

Key Feedback:

Favourite design:

- **Concept Design One:** 7 people
- **Concept Design Two:** 4 people
- **Concept Design Three:** 1 person

Favourite Features:

Water Play

Concept one received the highest rating for the statement "I like the type of water play area in this design (combined wading pool/splash pad)." With **12** responses saying they strongly agreed or agreed.

Off-Leash Area

Concept one received the highest ratings for the statement "I like the size, layout, and location of the Off-Leash Area in this design." With **8** responses saying they strongly agreed or agreed.

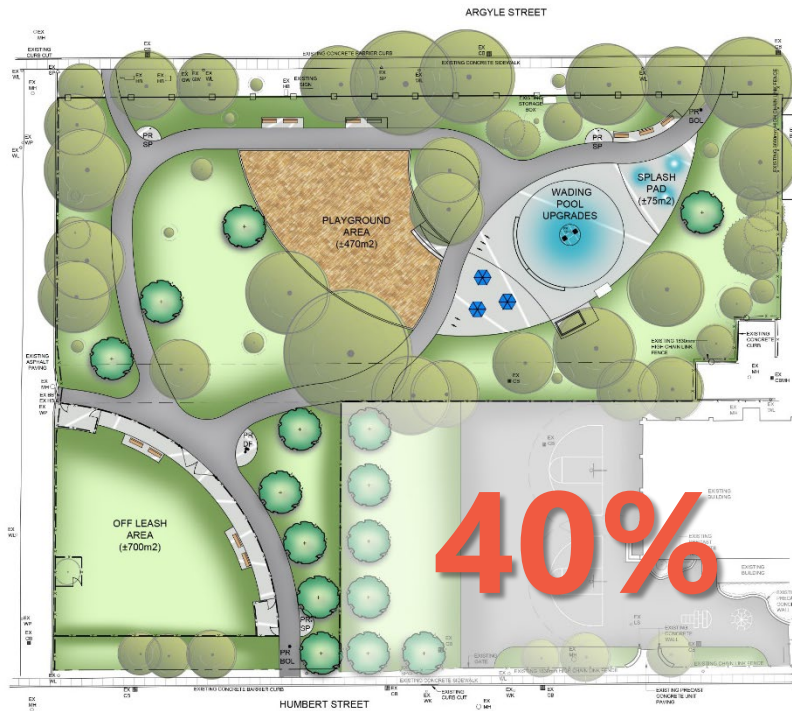
Playground

Concept one received the highest ratings for the statement "I like the size, layout, and location of the playground in this design." With **7** responses saying they strongly agreed or agreed.

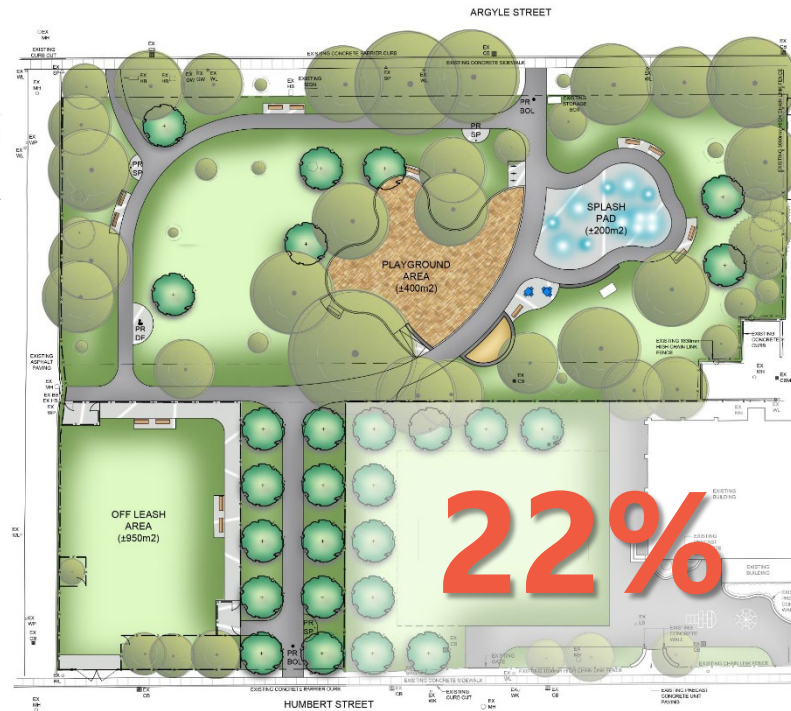
2021 - Concept Design Options Survey

- **Survey Responses: 546** (responses included participation by 905 people)
- **Key Feedback:**
- **Overall, which Concept Design Option do you prefer?**

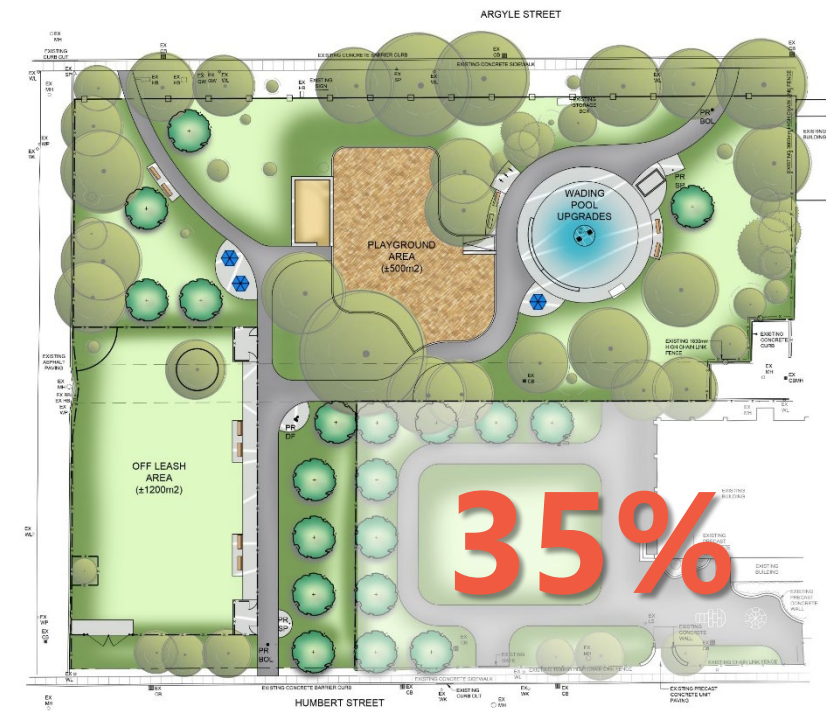
Concept One



Concept Two



Concept Three



2021 - Concept Design Options Survey

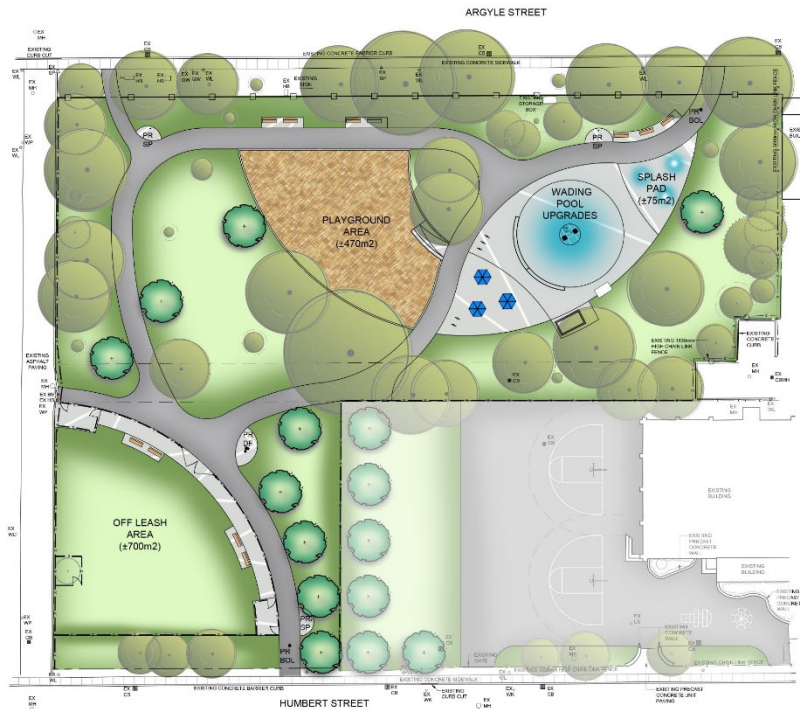
How important are each of the following design features to you and your household in for the revitalization of the park:

	Average	Count	% of responses			
Trees / Shade	10%	539	<div> <div>74%</div> <div>22%</div> <div>1%</div> </div>			
Safety	15%	534	<div> <div>68%</div> <div>22%</div> <div>9%</div> </div>			
Open lawn areas	27%	534	<div> <div>41%</div> <div>40%</div> <div>16%</div> <div>3%</div> </div>			
Seating	31%	536	<div> <div>35%</div> <div>40%</div> <div>22%</div> </div>			
Playground	33%	536	<div> <div>55%</div> <div>12%</div> <div>13%</div> <div>20%</div> </div>			
Accessible Pathways	33%	533	<div> <div>35%</div> <div>38%</div> <div>20%</div> <div>7%</div> </div>			
Lighting	34%	534	<div> <div>34%</div> <div>36%</div> <div>23%</div> <div>7%</div> </div>			
Space for passive enjoyment of the surroundings	36%	536	<div> <div>31%</div> <div>38%</div> <div>25%</div> <div>6%</div> </div>			
Waterplay Area	44%	534	<div> <div>40%</div> <div>16%</div> <div>18%</div> <div>27%</div> </div>			
Off-Leash Area	49%	533	<div> <div>40%</div> <div>10%</div> <div>15%</div> <div>35%</div> </div>			

Very Important
Important
Somewhat Important
Not At All Important

2021 - Concept Design Options Survey

Concept One



	Average	Count	% of responses			
I like the pathway layout in this design (including entrances, connections to amenities, and loop path).	32%	435	31%	48%	15%	6%
I like the type of water play area in this design (combined wading pool/splash pad).	32%	435	40%	32%	17%	10%
I like the size, layout, and location of the playground in this design.	33%	435	36%	40%	15%	10%
New trees are sufficient in this design.	36%	435	20%	59%	14%	7%
Open lawn areas for flexible use (i.e. relaxing, playing, small gatherings/events) is sufficient in this design.	39%	435	19%	54%	20%	7%
I like the location of fencing in this design.	39%	435	17%	54%	21%	7%
Seating options in this design are sufficient.	45%	435	13%	48%	29%	10%
I like the size, layout, and location of the Off-Leash Area in this design.	48%	435	27%	30%	17%	26%

■ Strongly Agree
 ■ Agree
 ■ Disagree
 ■ Strongly Disagree

N 435

2021 - Concept Design Options Survey

Concept Three



	Average	Count	% of responses			
I like the size, layout, and location of the playground in this design.	35%	435	28%	47%	17%	8%
New trees are sufficient in this design.	35%	435	17%	66%	14%	1%
I like the location of fencing in this design.	38%	435	16%	60%	17%	6%
I like the inclusion of, size, layout and location of a sandbox in this design.	40%	435	21%	49%	21%	9%
I like the pathway layout in this design (including entrances and connections to amenities).	40%	435	17%	53%	20%	9%
Open lawn areas for flexible use (i.e. relaxing, playing, small gatherings/events) is sufficient in this design.	41%	435	16%	53%	23%	8%
Seating options in this design are sufficient.	43%	435	13%	52%	26%	8%
I like the type of water play area in this design (wading pool).	44%	435	16%	45%	30%	10%
I like the size, layout, and location of the Off-Leash Area in this design.	48%	435	29%	26%	19%	26%

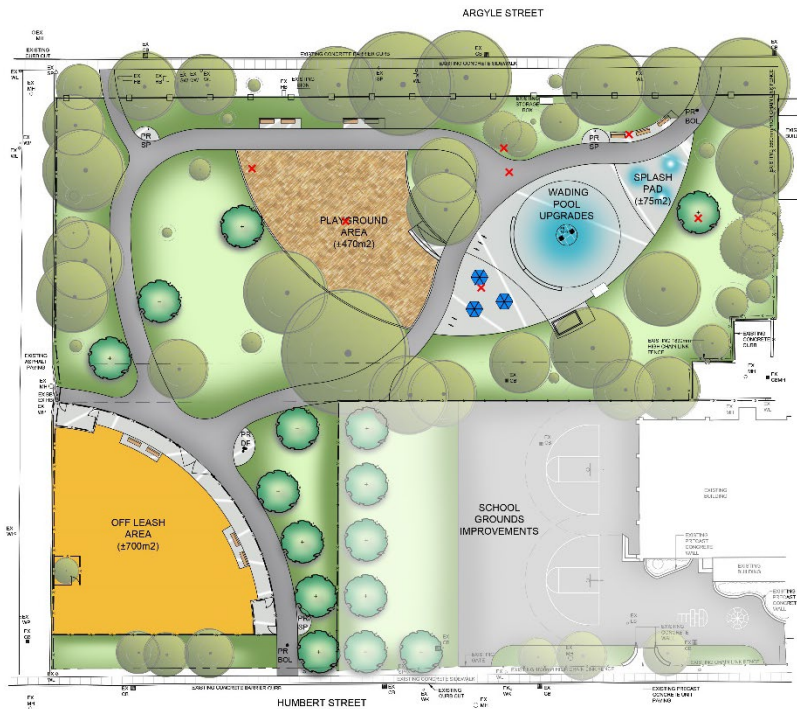
■ Strongly Agree
 ■ Agree
 ■ Disagree
 ■ Strongly Disagree

Concept Design Options Overview

April Szeto, Harrington McAvan LTD

Concept Design Options

Concept One



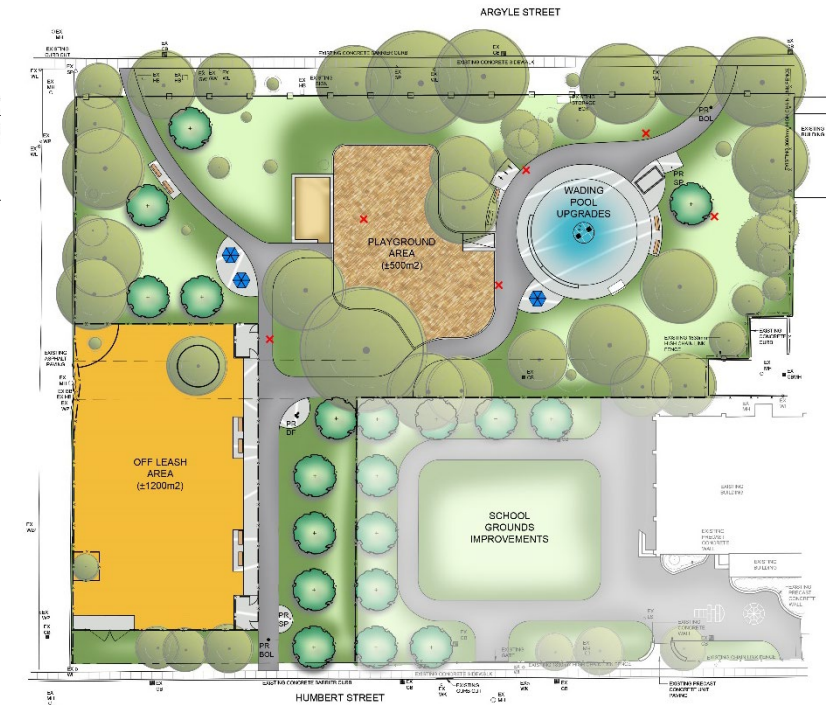
- Pathway Loop
- Playground Area (+/-470m²)
- Wading Pool & Small Splash Pad
- Smallest OLA (+/-700m²)
- Open Space (+/-850m²)
- 7 Tree Removals & 9 New Trees

Concept Two



- Pathway Loop
- Smallest Playground Area (+/-400m²): Smaller than Existing (440m²)
- Splash Pad (+/-200m²)
- OLA (+/-950m²)
- Largest Open Space (+/-1300m²)
- 8 Tree Removals & 17 New Trees

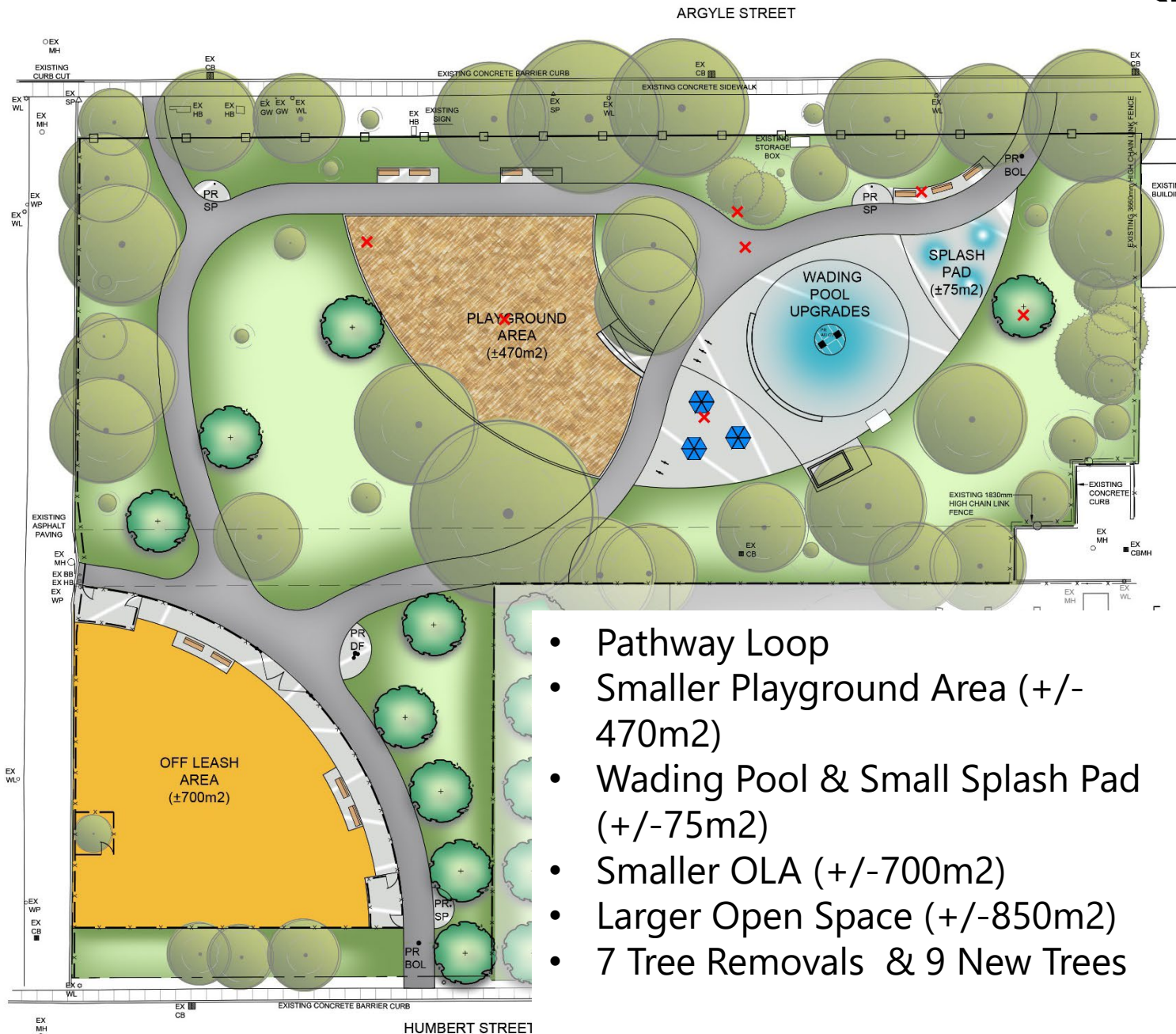
Concept Three



- Largest Playground Area (+/-500m²)
- Wading Pool
- Largest OLA (+/-1200m²)
- Smallest Open Space (+/-575m²)
- 6 Tree Removals & 10 New Trees

2 Preferred Concepts: Concept One

More Curvilinear Form With Wading Pool/ Splash Pad Combination for Water Play Area



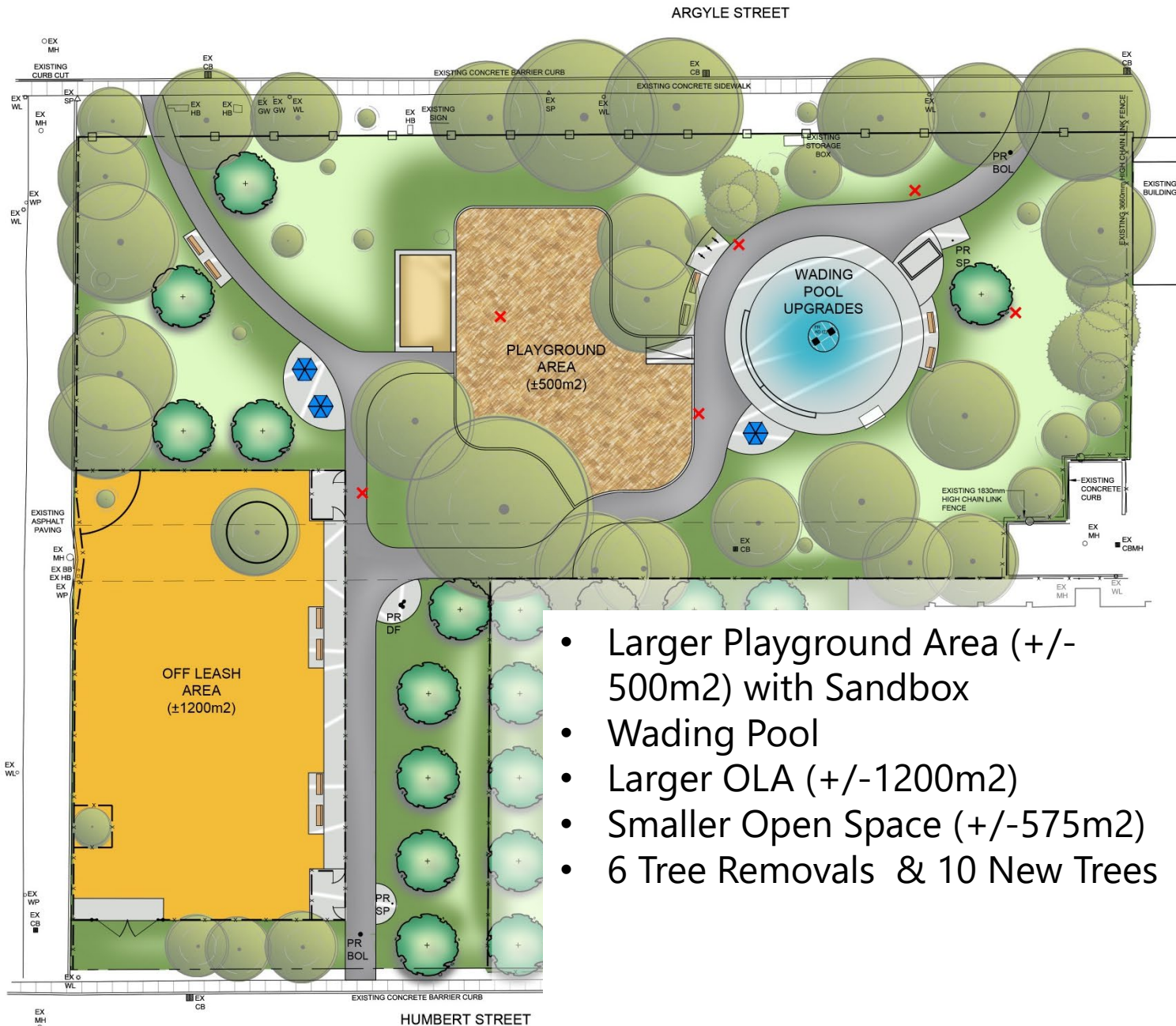
Legend

	EXISTING DECIDUOUS TREE		TREE PROTECTION ZONE
	EXISTING CONIFEROUS TREE		PROPOSED DECIDUOUS TREE PLANTING
	PROPOSED TREE REMOVAL		
	ASPHALT PATHWAY		
	CONCRETE PAVING		
	DECORATIVE METAL FENCE		
	CHAIN LINK FENCE		
PR BOL	REMOVABLE BOLLARD		
PR SP	TRASH AND RECYCLING RECEPTACLES		
PR DF	BOTTLE FILLER/ DRINKING FOUNTAIN/ PET BOWL STATION		
	WADING POOL STORAGE SHED		
	SEATING AREA WITH PATIO STYLE TABLES c/w UMBRELLAS		
	BIKE/ STROLLER PARKING AREA		
	BENCH ON CONCRETE PAD		

- Pathway Loop
- Smaller Playground Area (+/- 470m²)
- Wading Pool & Small Splash Pad (+/-75m²)
- Smaller OLA (+/-700m²)
- Larger Open Space (+/-850m²)
- 7 Tree Removals & 9 New Trees

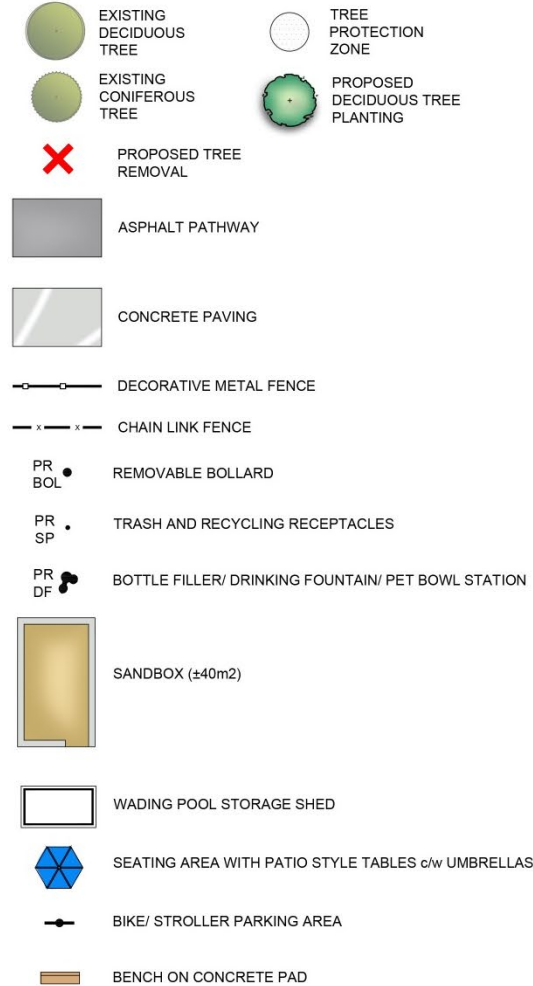
2 Preferred Concepts: Concept Three

More Linear Form With Wading Pool for Water Play Area



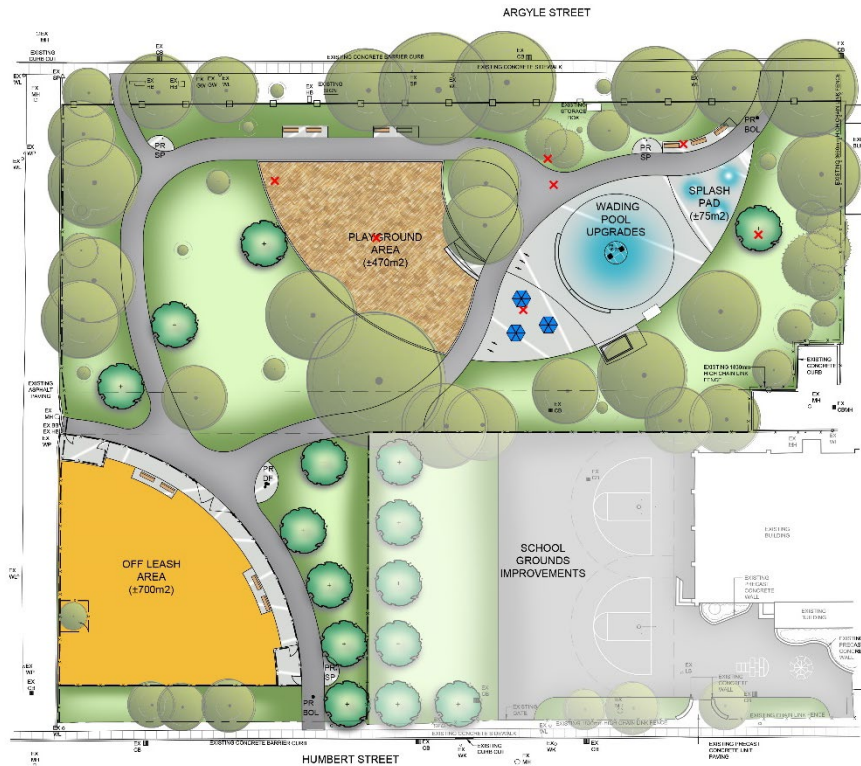
- Larger Playground Area (+/- 500m²) with Sandbox
- Wading Pool
- Larger OLA (+/- 1200m²)
- Smaller Open Space (+/- 575m²)
- 6 Tree Removals & 10 New Trees

Legend



2 Preferred Concepts

Concept One



- Pathway Loop
- Smaller Playground Area (+/-470m2)
- Wading Pool & Small Splash Pad (+/-75m2)
- Smaller OLA (+/-700m2)
- Larger Open Space (+/-850m2)
- 7 Tree Removals & 9 New Trees

Concept Three



- Larger Playground Area (+/-500m2) with Sandbox
- Wading Pool
- Larger OLA (+/-1200m2)
- Smaller Open Space (+/-575m2)
- 6 Tree Removals & 10 New Trees

Guided Discussion

Daniel Fusca, City of Toronto

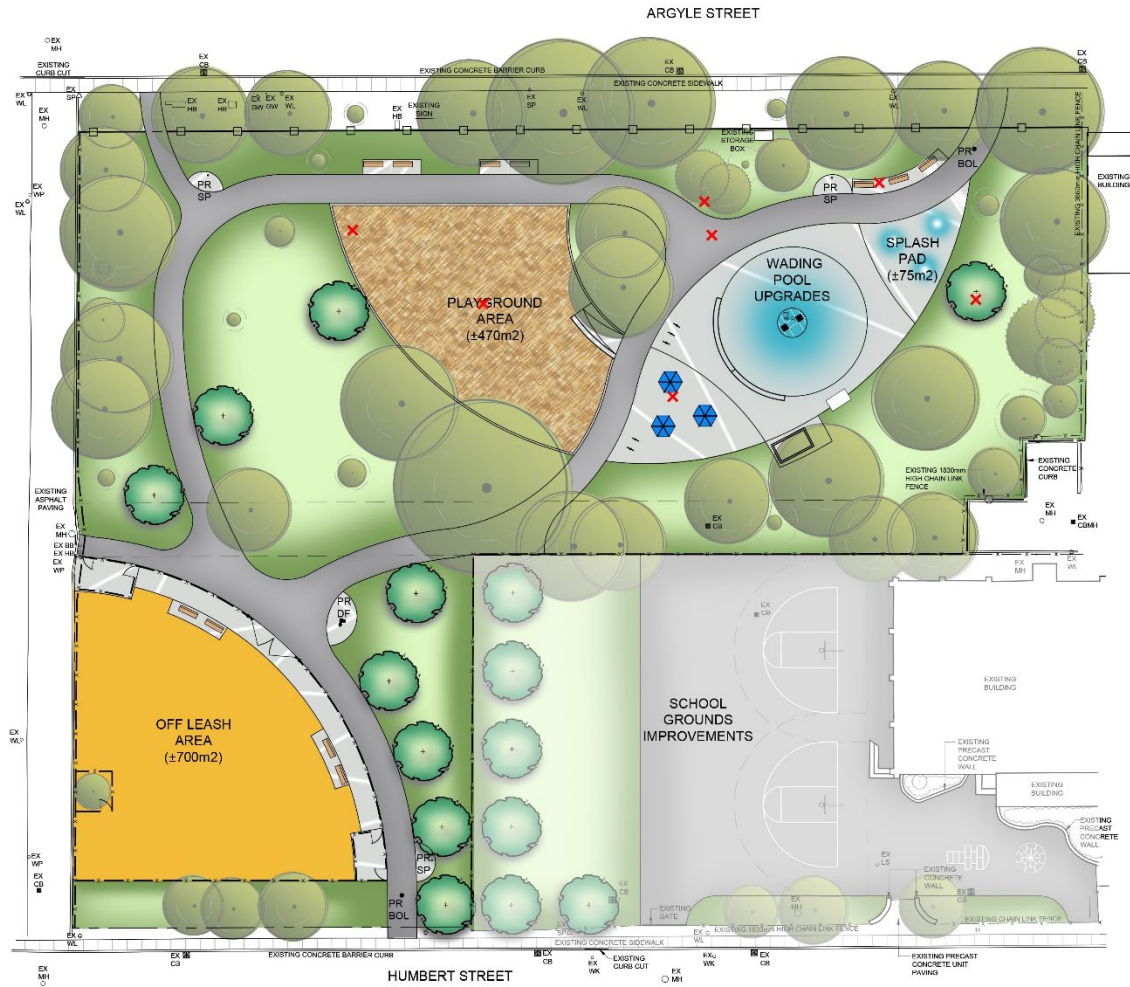
"Deep listening requires the temporary suspension of judgment, and a willingness to receive new information – whether pleasant, unpleasant, or neutral."

Ground Rules:

- Everyone gets an equal amount of time to speak
- Speak only about yourself, your experiences, and your needs
- Do not make assumptions or speak to the experiences of other park users

What are your priorities for the redesign of Osler Playground? How will the different redesign options affect your life and use of the park, either positively or negatively?

Deep Listening



Concept One

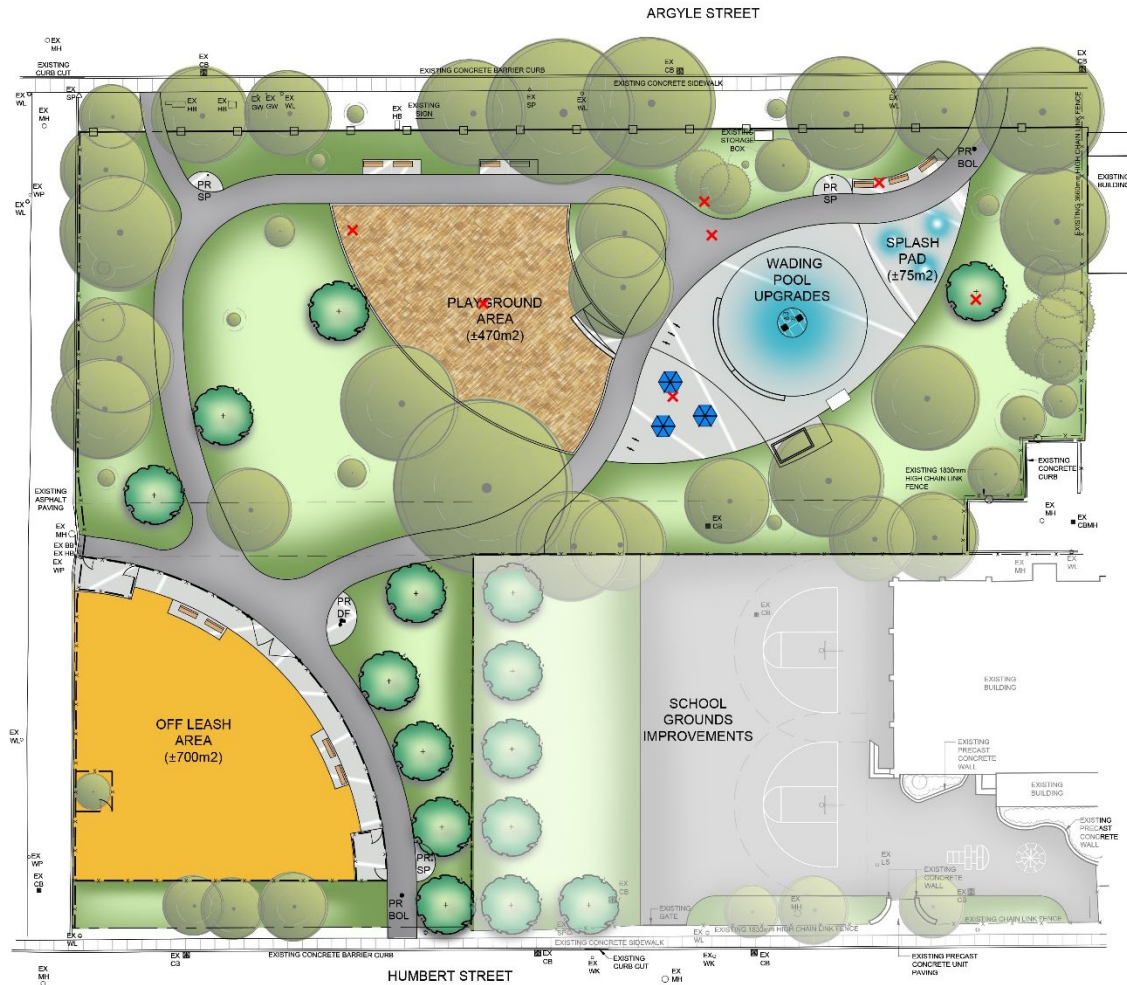


Concept Three



Thinking about what you just heard as well as your own experiences and needs, fill in the survey to indicate where you think trade-offs should be made amongst the various park redesign components.

Trade-Offs Exercise



Concept One



Concept Three

Based on what you heard tonight, and seeing the outcomes of the trade-offs exercise, what advice would you give the project team regarding the size and types of amenities that are included in the plan? What solution do you think will benefit *all* park users (not just your own)?

Next Steps

Next Steps

- Incorporate feedback from this meeting into development of preferred concept design
- Consult with City and School Board Staff and refine design as needed to meet stakeholder requirements
- Share preferred design with community members via email, project webpage, and online survey, gather additional feedback on play equipment (playground, waterplay) options
- Finalize design and prepare construction documents package
- Procure construction services
- Build the park!

THANK YOU!

