

New Park at 44 Jackes Avenue

Virtual Community Meeting

Phase 1B: Design Options

February 24, 2022



Tonight we will:



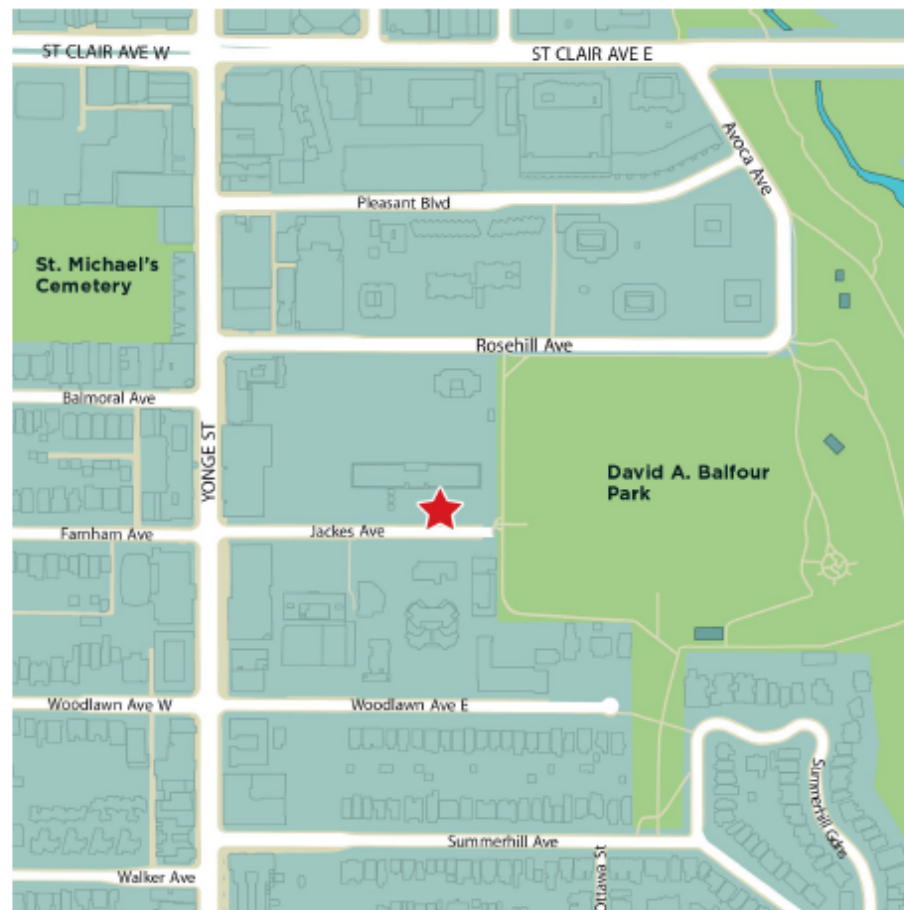
Present key findings from phase 1 of public consultation in fall 2021



Present **two new design options** for the park



Hear your thoughts and feedback in an interactive question-and-answer session



The new park will be located west of David A. Balfour Park and front onto Jackes Avenue.



Anticipated Project Timeline



Past Consultation – Key Findings

Community input was received during the first round of engagement through:



Stakeholder Meeting

September 14, 2021



Virtual Community Meeting

September 29, 2021



Online Survey

September 29 to October 17, 2021



Email Comments

September to October 2021

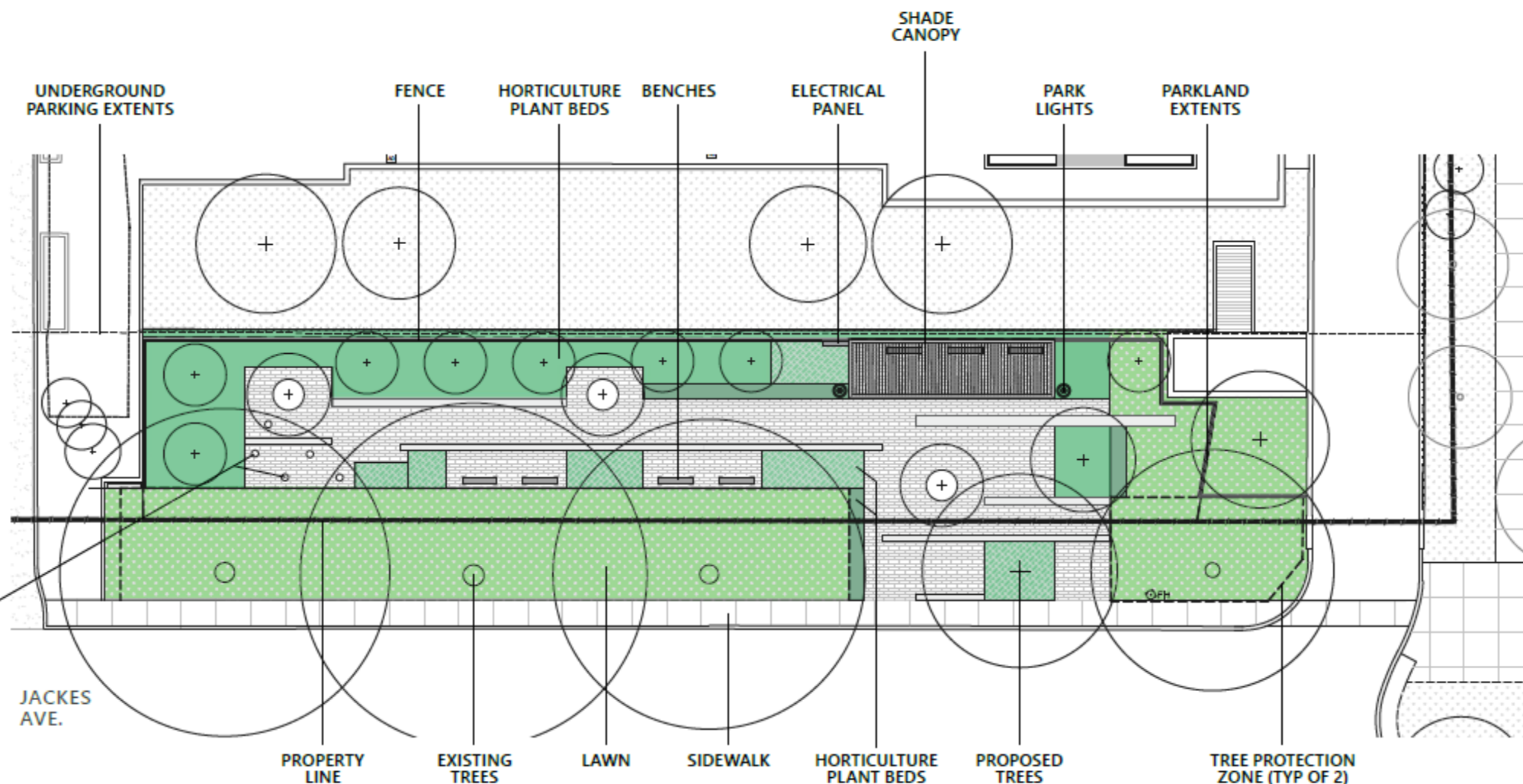
Key Feedback Themes

- Suggestions for senior-friendly park programming, site furniture, and amenities
- Noise, privacy, and security were critical issues brought forward – concerns from residents about increased noise levels during and post-construction of the new park
- Lighting should focus on pedestrian-level only and not contribute to light pollution
- Concerns that the park design was over programmed, and should be redesigned to be more “reflective” and “meditative” - include quiet seating areas, sensory planting, thematic paving, rock elements, etc.



Concept Design Option A

- Mixed shrub and tree plant beds are organized irregularly throughout the park for visual appeal
- Benches are tucked between planting areas for rest and quiet reflection
- Sculptural seating is found on the west side offering a small social gathering space
- A canopy is found on the east side of the park providing shelter and shade
- A wooden fence borders the park creating privacy for both building residence and park goers



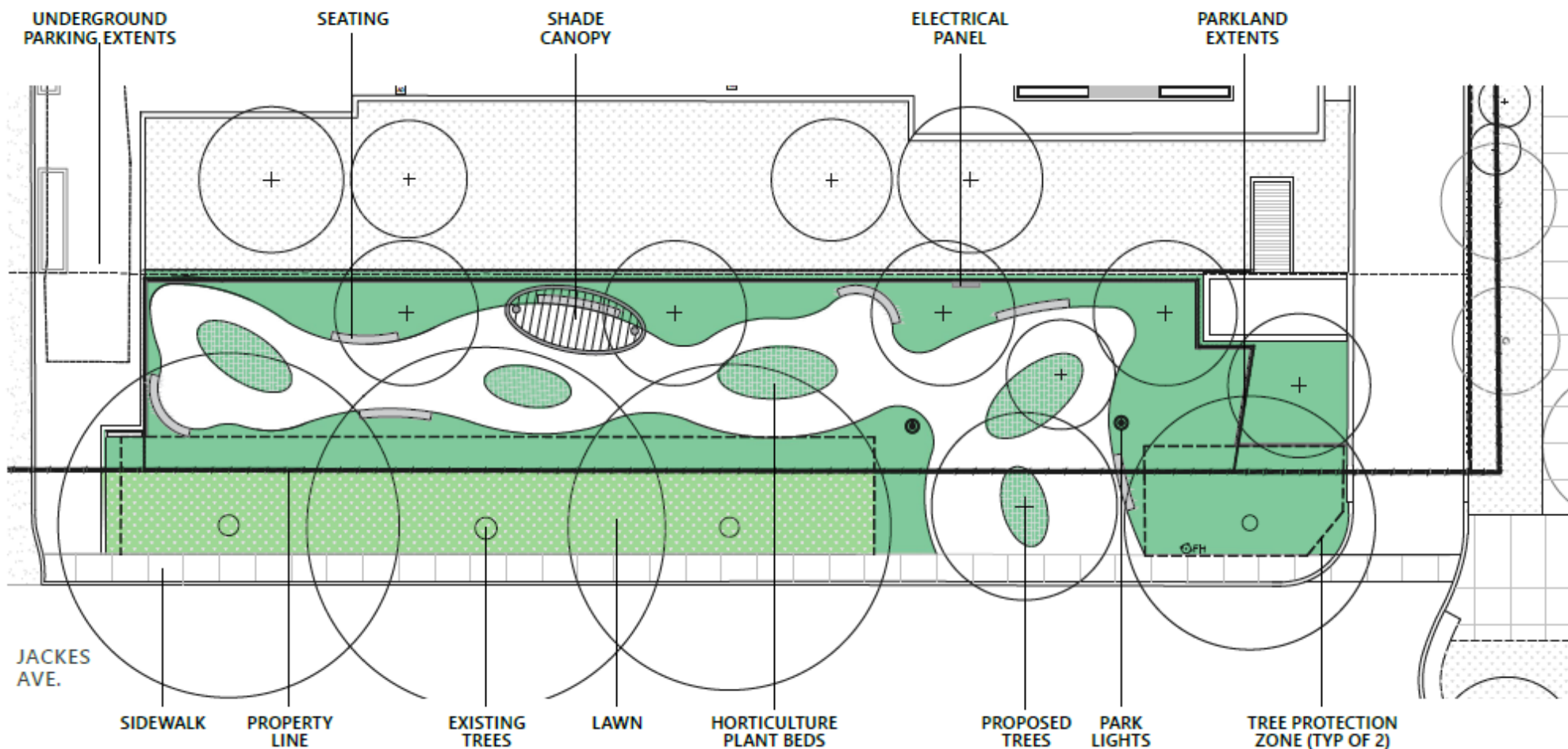
Concept Design Option A



ARTISTIC REPRESENTATION

Concept Design Option B

- The park is immersed with oval shaped planters and bending plant beds with mixed shrubs and trees for visual appeal
- The path meanders through the park allowing for a gradual stroll and a reflective walk
- Seating locations follow the perimeter of the walkway, offering different vantage points and areas for contemplation
- A small canopy is found in the middle of the park providing shelter and shade
- A wooden fence borders the park creating privacy for both building residence and park goers



Concept Design Option B



ARTISTIC REPRESENTATION

Next Steps

Visit the project webpage at toronto.ca/JackesAvenuePark to:

- Share your detailed feedback in an online survey open until March 13, 2022
- Access this presentation online
- Sign up for e-updates to stay informed and to receive notice on our next round of consultation

For further comments or questions, contact:

Leigh Lichtenberg

PFR Parks Development

Leigh.Lichtenberg@toronto.ca

437-235-7022

