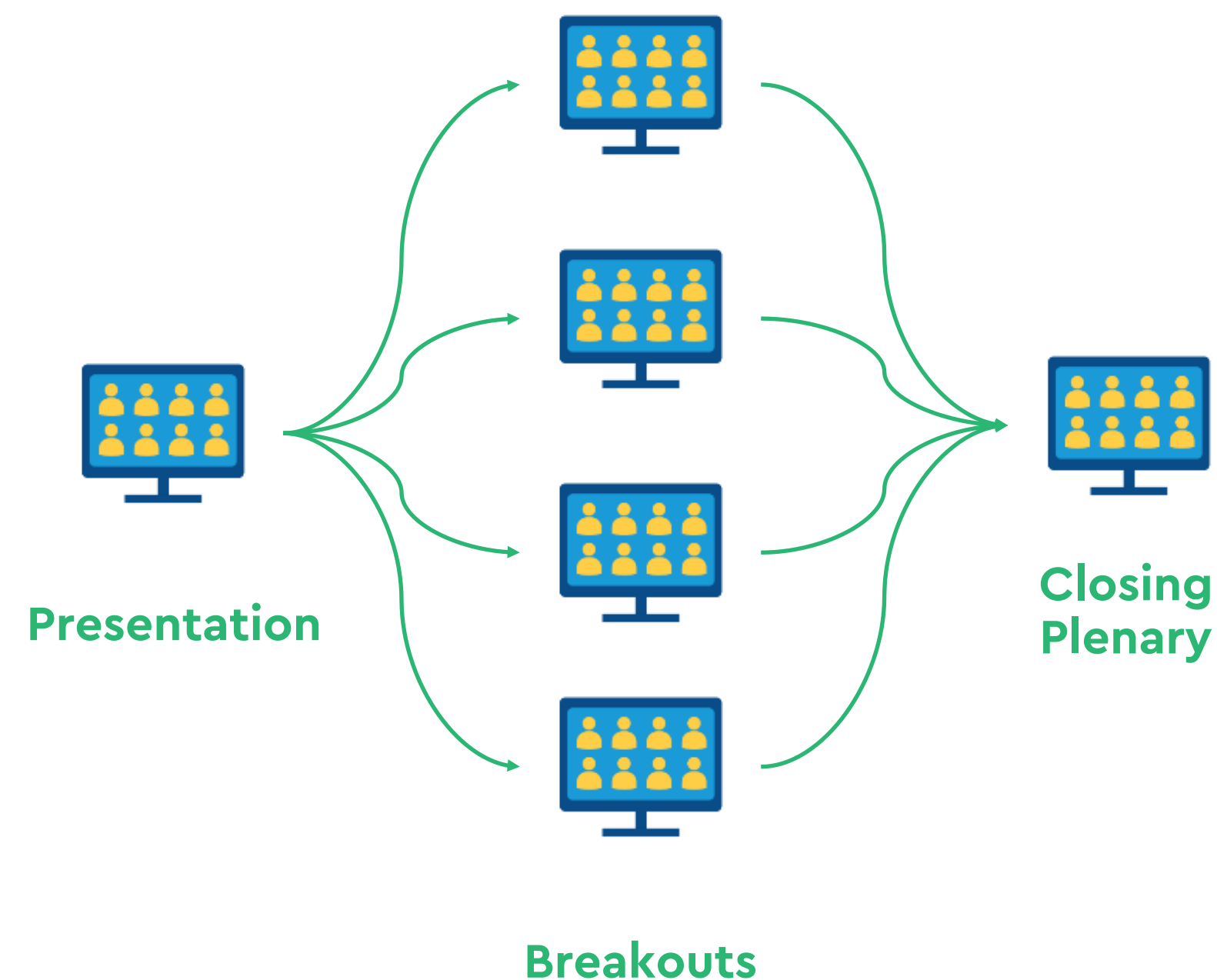




# Deep Dive Workshop

Improving Access and Connection

# Agenda



6:00 Welcome, land acknowledgement, agenda review

6:15 Overview: Improving Access and Connection

*Questions of clarification*

6:45 Discussion in breakout rooms

7:45 Report back and plenary discussion

7:55 Wrap up and next steps

8:00 Adjourn



# Land Acknowledgment



# Team Introductions

# House Keeping



## All Participants are muted upon entry.

This ensures that we are not getting feedback and that multiple people don't talk at the same time.



## Raise (and lower) hand.

If you'd like to talk to a member of the project team, simply raise your hand and the facilitator will unmute you. Don't forget to lower it when you're done.



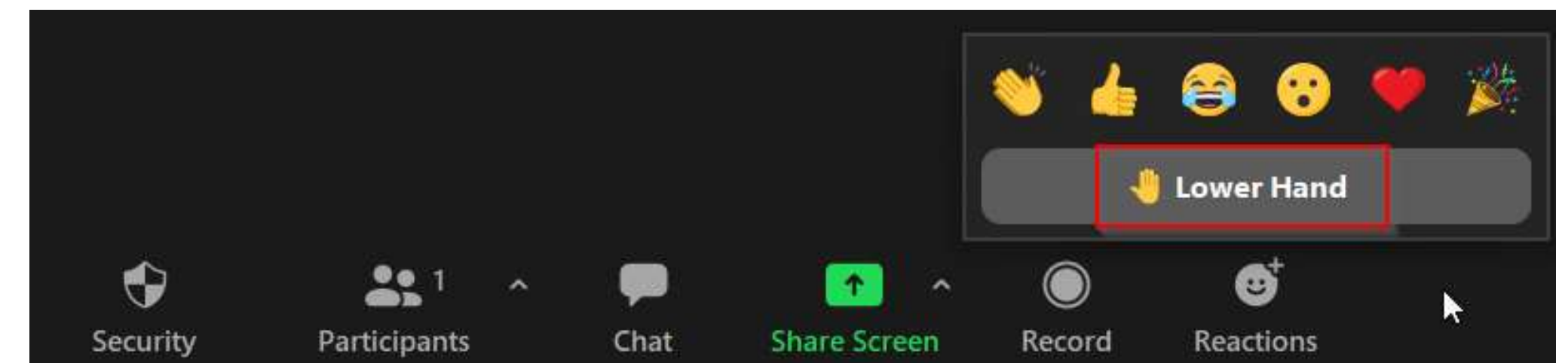
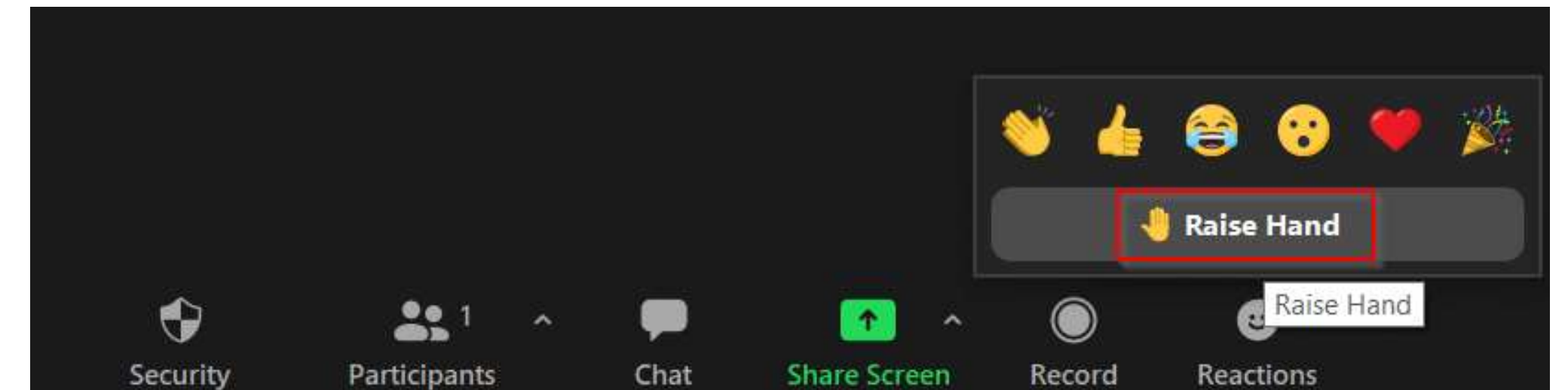
## Use the chat.

The chat will be open for you to chat with participants. Keep in mind the facilitator might not catch all comments that go by.



## Use reactions!

Virtual events can feel so impersonal. Feel free to use any of the emojis available to communicate with the project team and all participants.



On your  
phone



Press \*9 to raise hand



Press \*6 to unmute

# Engagement by the Numbers

1,268+



## Synchronous Engagement

(number of people who attended "in person" events)

12,632+



## Digital Tools

(Number of people who responded to surveys and digital engagement tools)

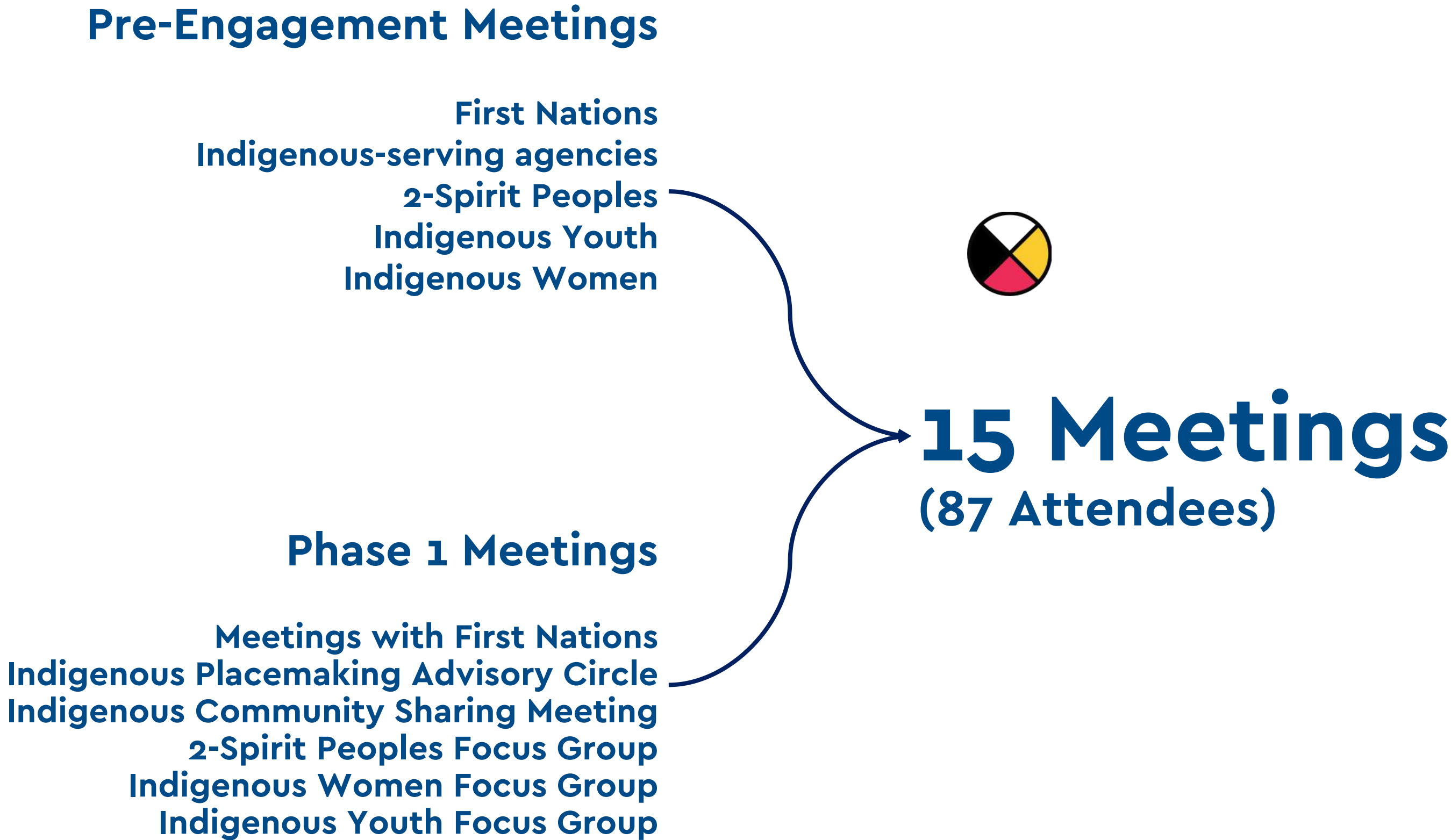


Over 4.3 Million

## Social Media Reach

(unique IP addresses that saw our social media posts)

# Indigenous Engagement by the Numbers



**1**  
**Ceremony**

(315 attendees and viewers)

**1**  
**Placekeeping  
Forum**

(432 attendees and viewers)

# Join Us – [Toronto.ca/IslandMasterPlan](https://toronto.ca/IslandMasterPlan)



## Improving Access and Connection Deep Dive

March 10, 2022  
6 p.m. – 8 p.m.



Enhancing Visitor Experience  
Deep Dive  
March 3, 2022  
6 p.m. to 8 p.m.



Supporting a Dynamic  
Environment Deep Dive  
March 7, 2022  
6 p.m. to 8 p.m.



Elevating Equity and Belonging  
Deep Dive  
March 24, 2022  
6 p.m. – 8 p.m.



Indigenous Sharing Meeting  
Mar 9, 2022  
6:30 p.m. to 8:30 p.m.



Demonstration  
Plan Survey  
March 7 – 25 2022

# Important Links

**Web Page:** <https://toronto.ca/IslandMasterPlan>

**Island Stories:** <https://toronto.ca/IslandStories>

**Social Pinpoint:** <https://toronto.mysocialpinpoint.ca/toronto-island-park-wayfinding-map>

**Survey:** <https://s.cotsurvey.chkmkt.com/IslandDemonstrationPlan>

A blue-tinted photograph of a harbor scene. In the foreground, a large ferry is docked on the left. A weeping willow tree stands in the water. Several large, cylindrical buoys are visible in the water. In the background, a city skyline is visible across the water, with a prominent tower (likely the CN Tower) on the left. The sky is cloudy.

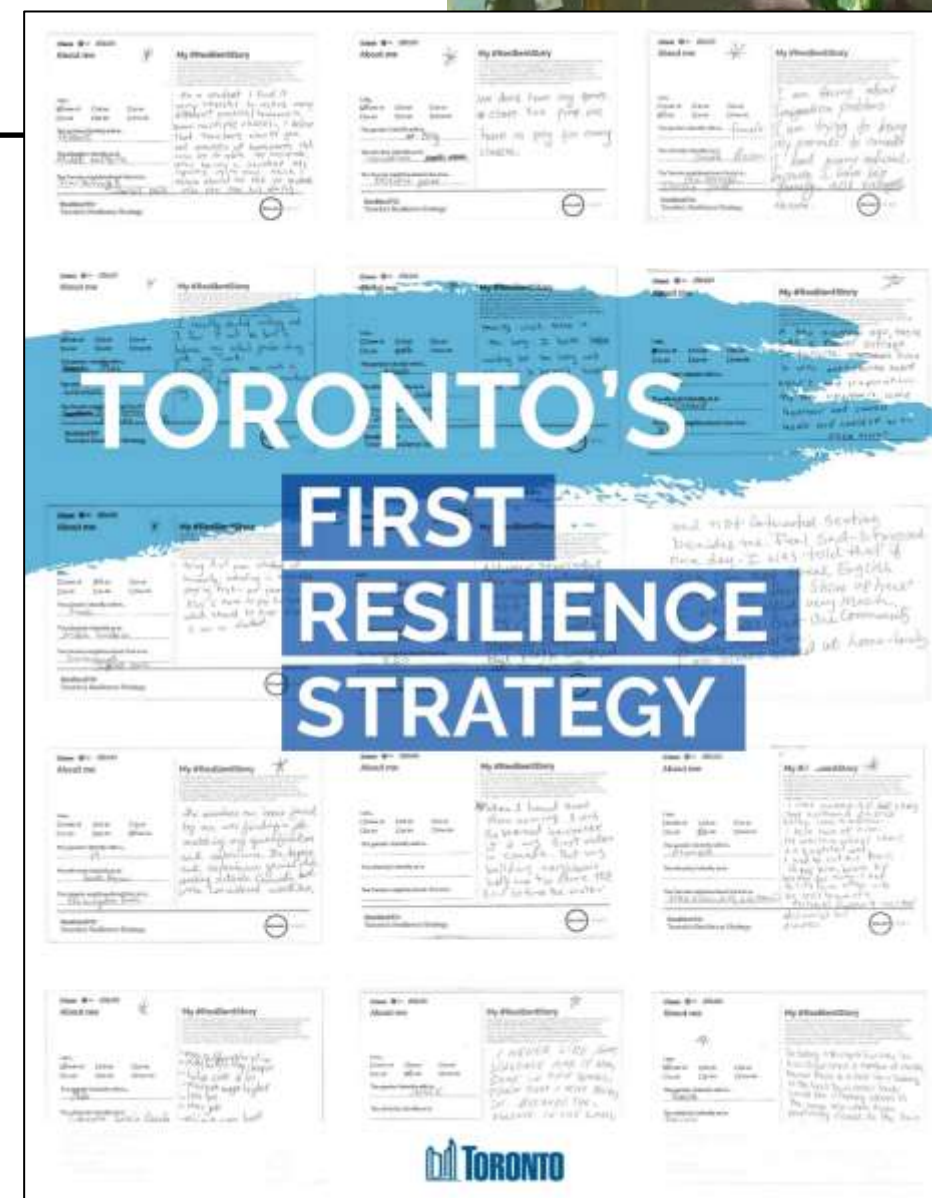
# Overview



*The study area for the Toronto Island Park Master Plan includes all of Toronto Island Park and the area around the Jack Layton Ferry Terminal on the city side of the harbour. It does not include the island's residential areas, the service area around the water treatment plant, or Billy Bishop Airport.*

# Guiding Strategies

## Down- town Parks and Public Realm Plan



## City-wide Policy & Initiatives:

Official Plan

Parkland Strategy

Parks & Recreation Facilities Master Plan

Toronto's First Resilience Strategy

Toronto Biodiversity Strategy

Public Art Strategy

Toronto Parks and Trails Wayfinding Strategy

## Downtown-specific Policy & Initiatives:

TOCore: Downtown Parks & Public Realm Plan

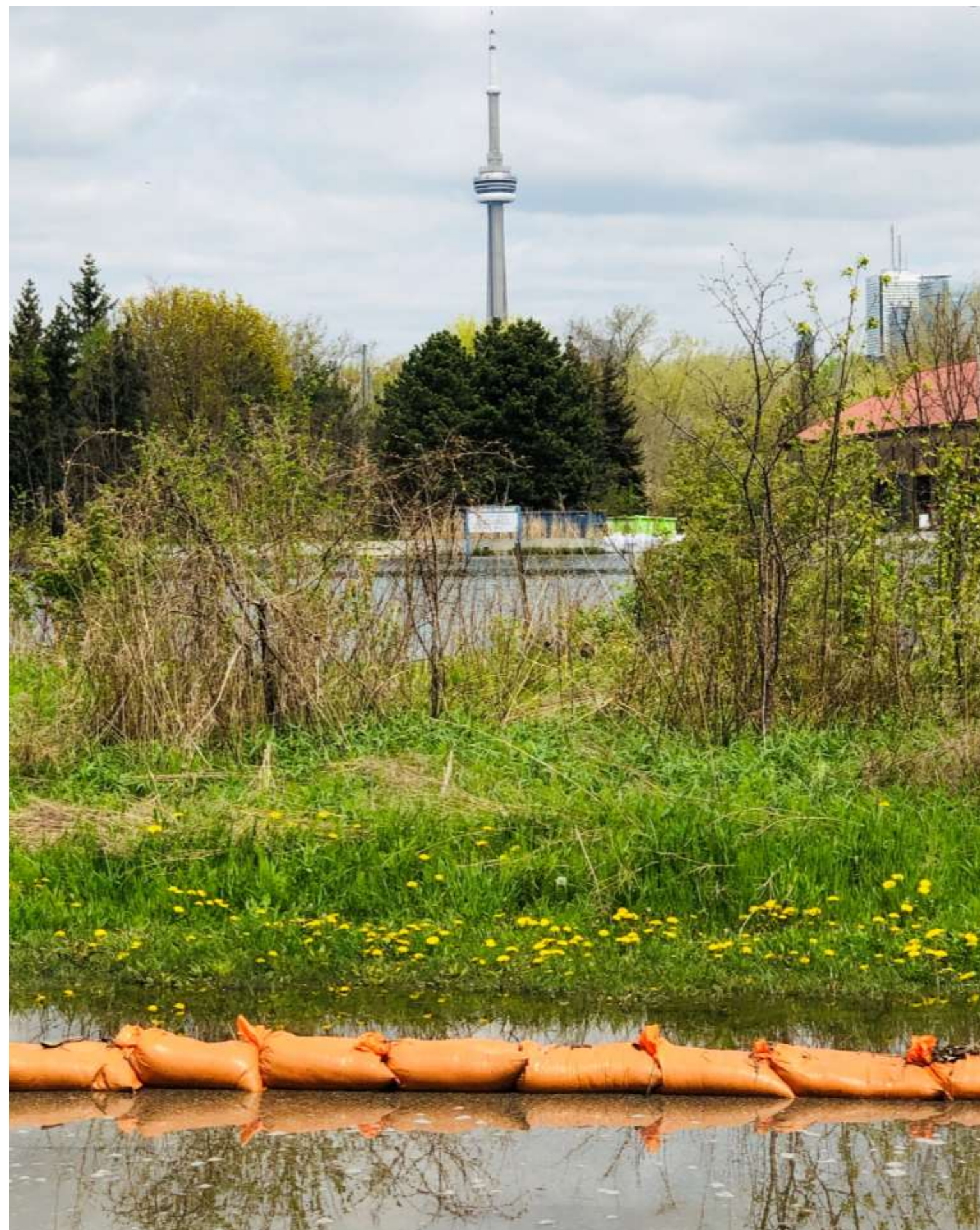
Central Waterfront Secondary Plan

Waterfront Toronto Resilience Strategy

Waterfront Toronto Marine Use Strategy

Billy Bishop Airport Master Plan Update

# Parallel Studies



## **City of Toronto-led:**

Toronto Island Park Business Strategy

Toronto Island Cultural Heritage Resource Assessment

Toronto Island Public Life Study

Island Stories

Ferry Fleet Replacement Strategy

Jack Layton Ferry Terminal Revitalization (with WT)

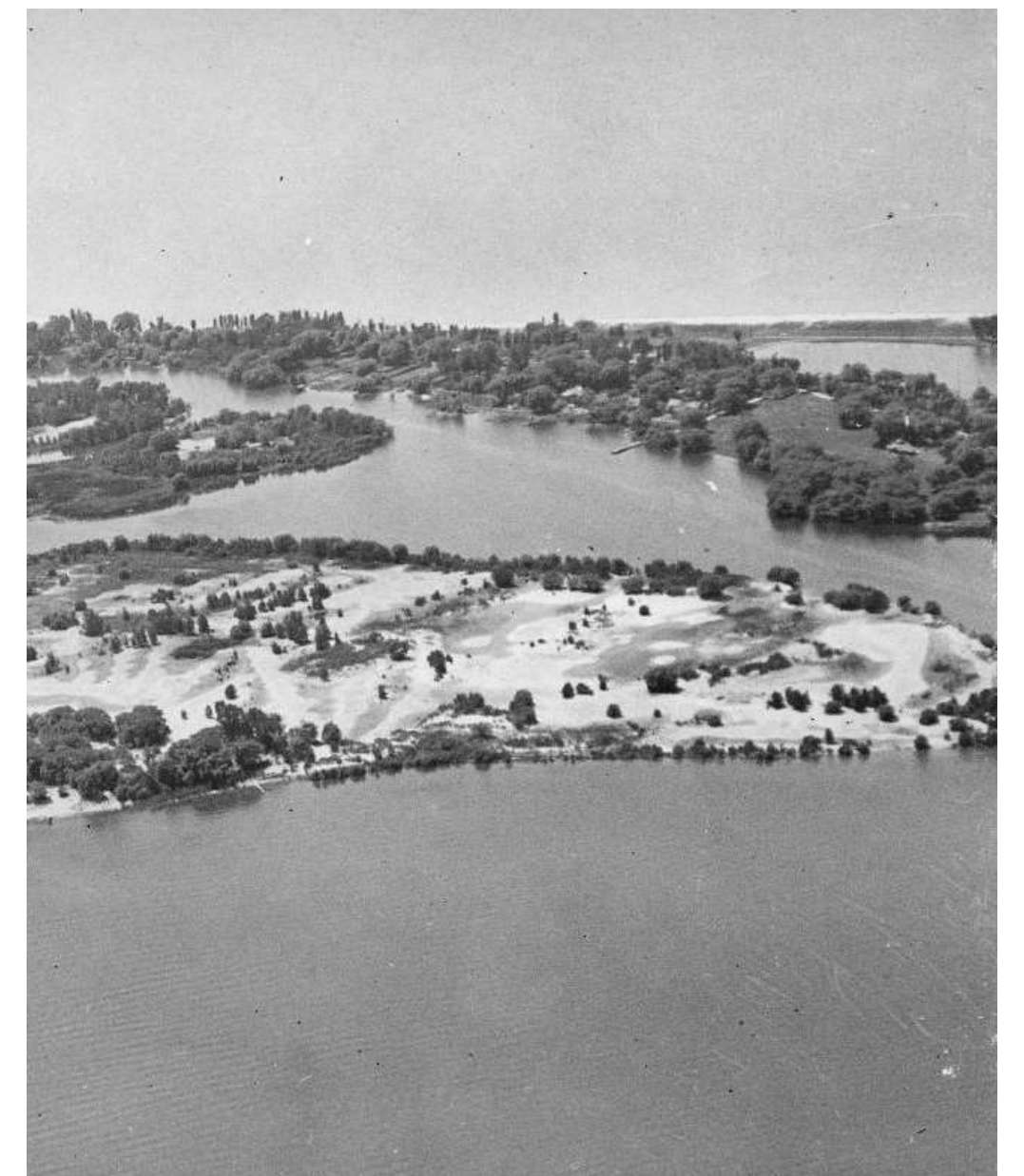
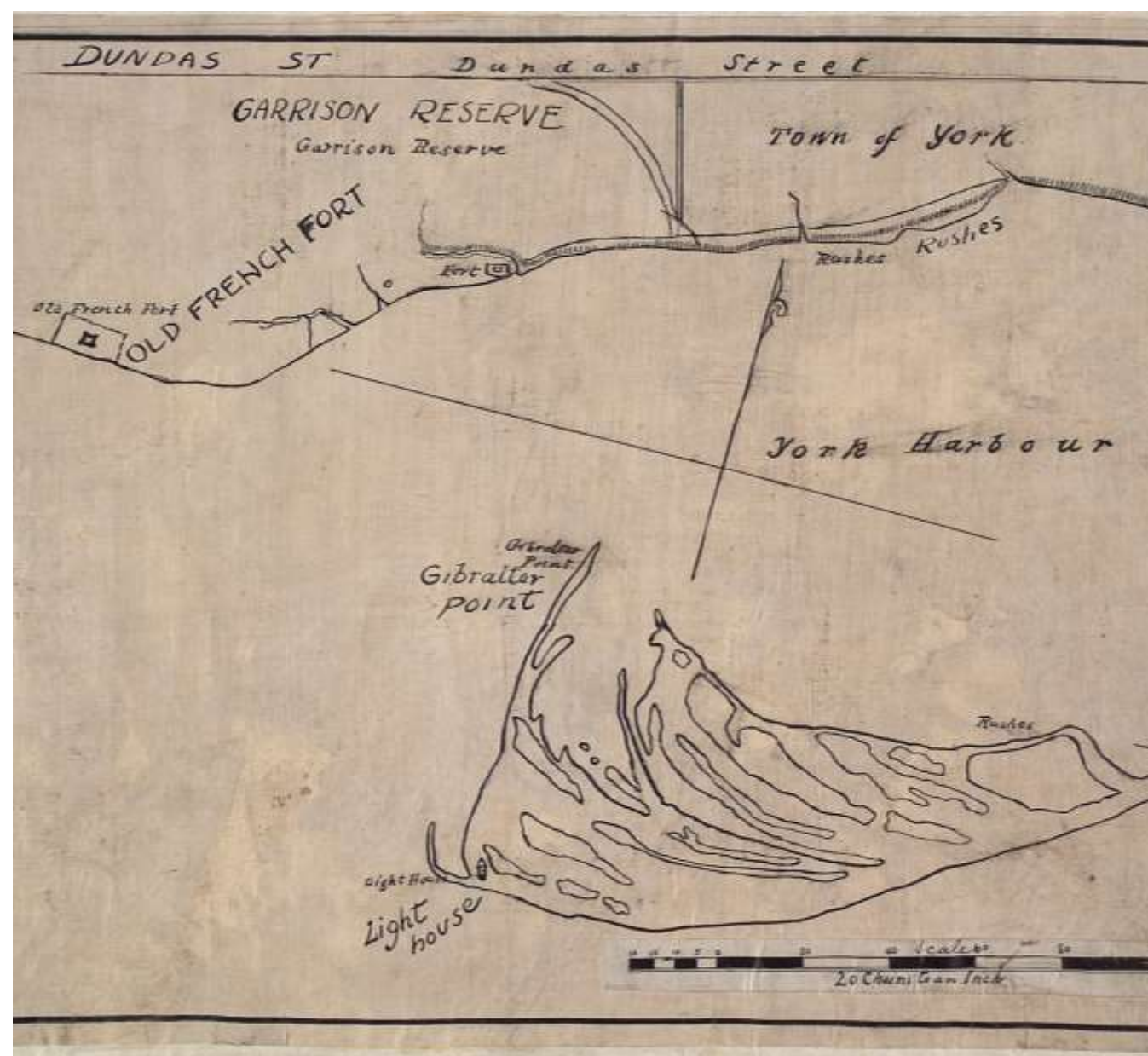
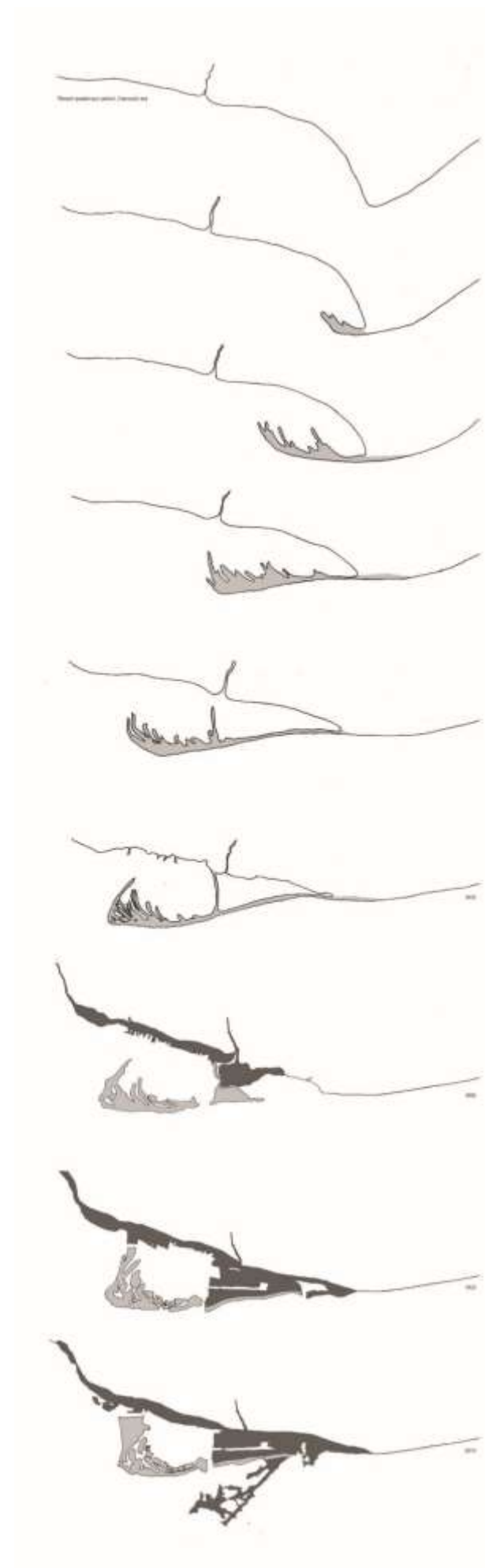
## **TRCA-led:**

Gibraltar Point Erosion Control Project

Toronto Island Park Flood and Erosion Mitigation EA

Class I Archaeological Assessment

# Understand how the Island formed



# Understand the Island's past



... and the hidden stories

# Promote protection and value of natural areas

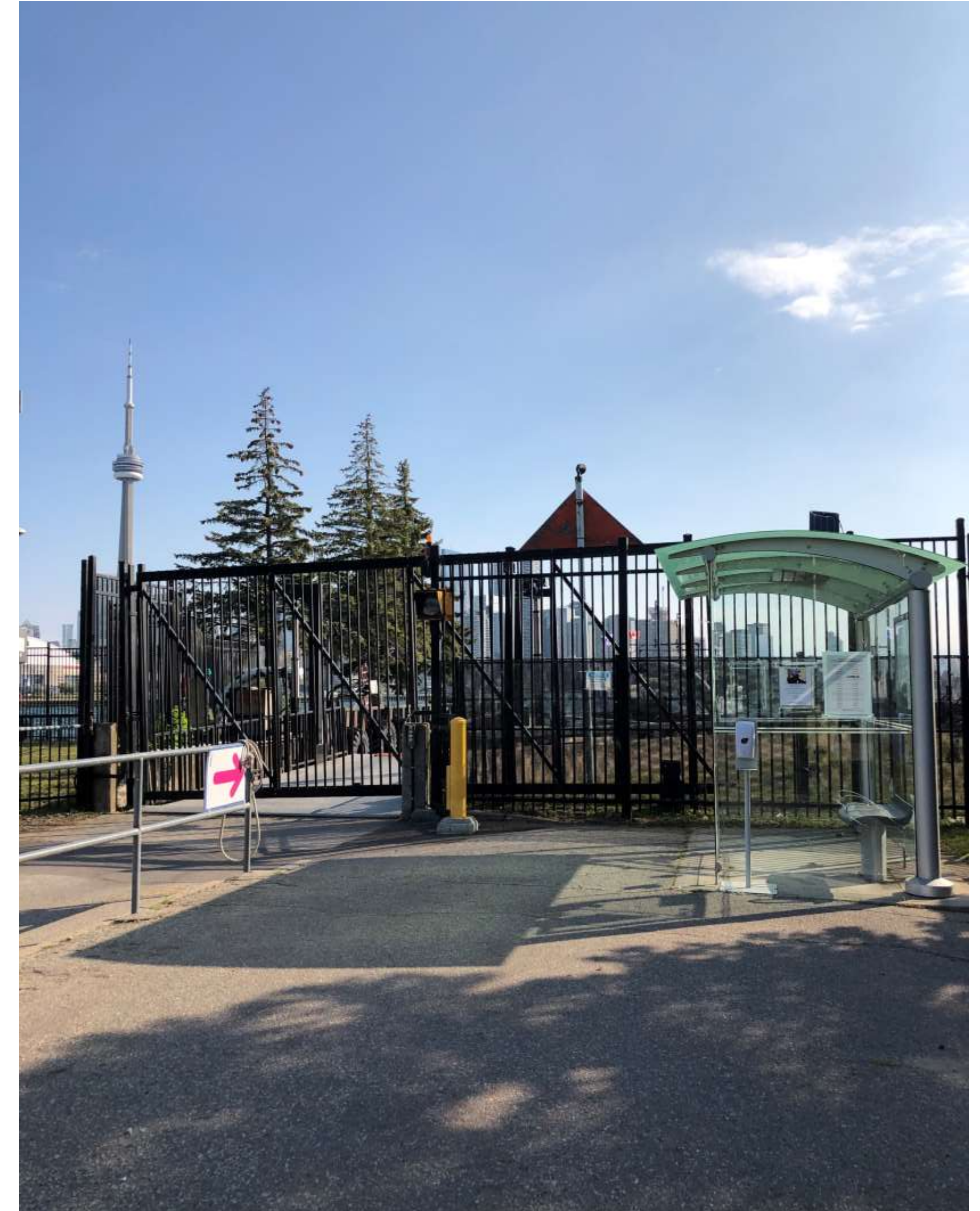


# Identify opportunities in existing built heritage





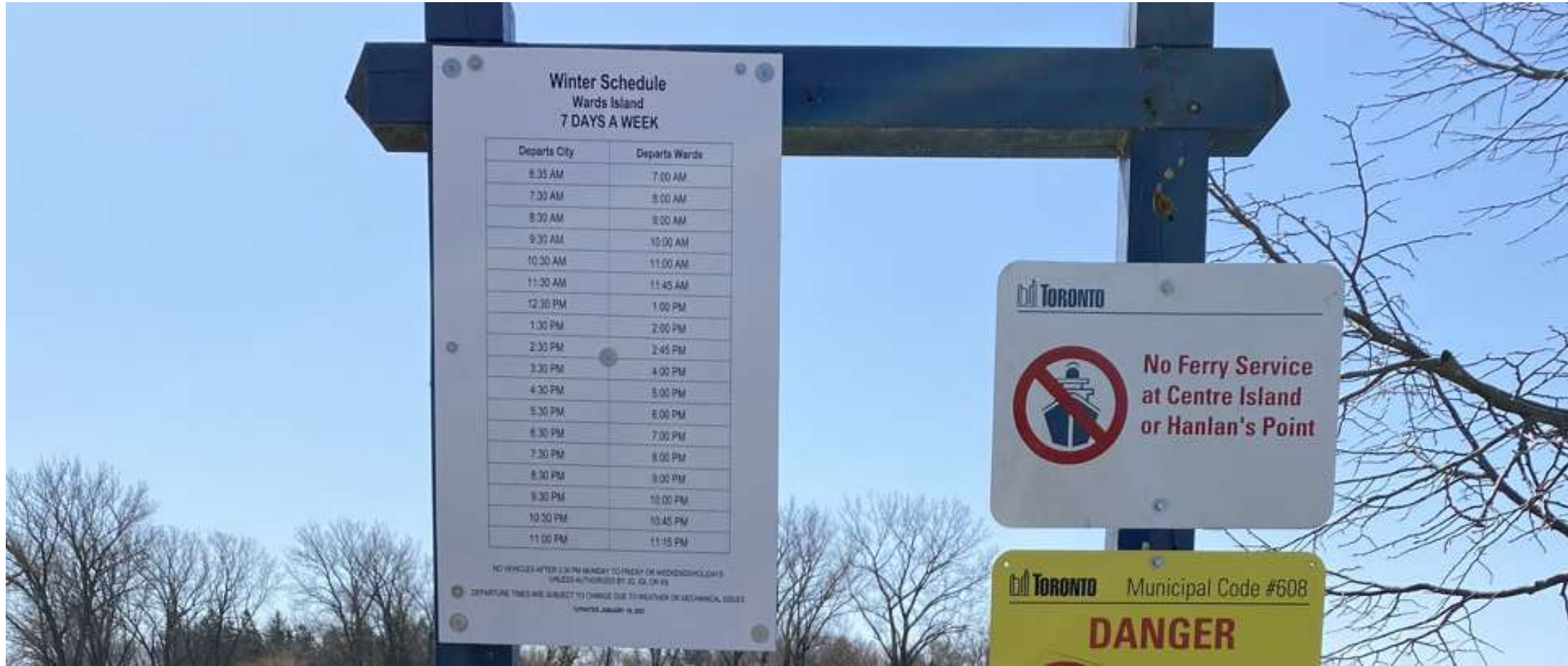
# Ferries and Landings



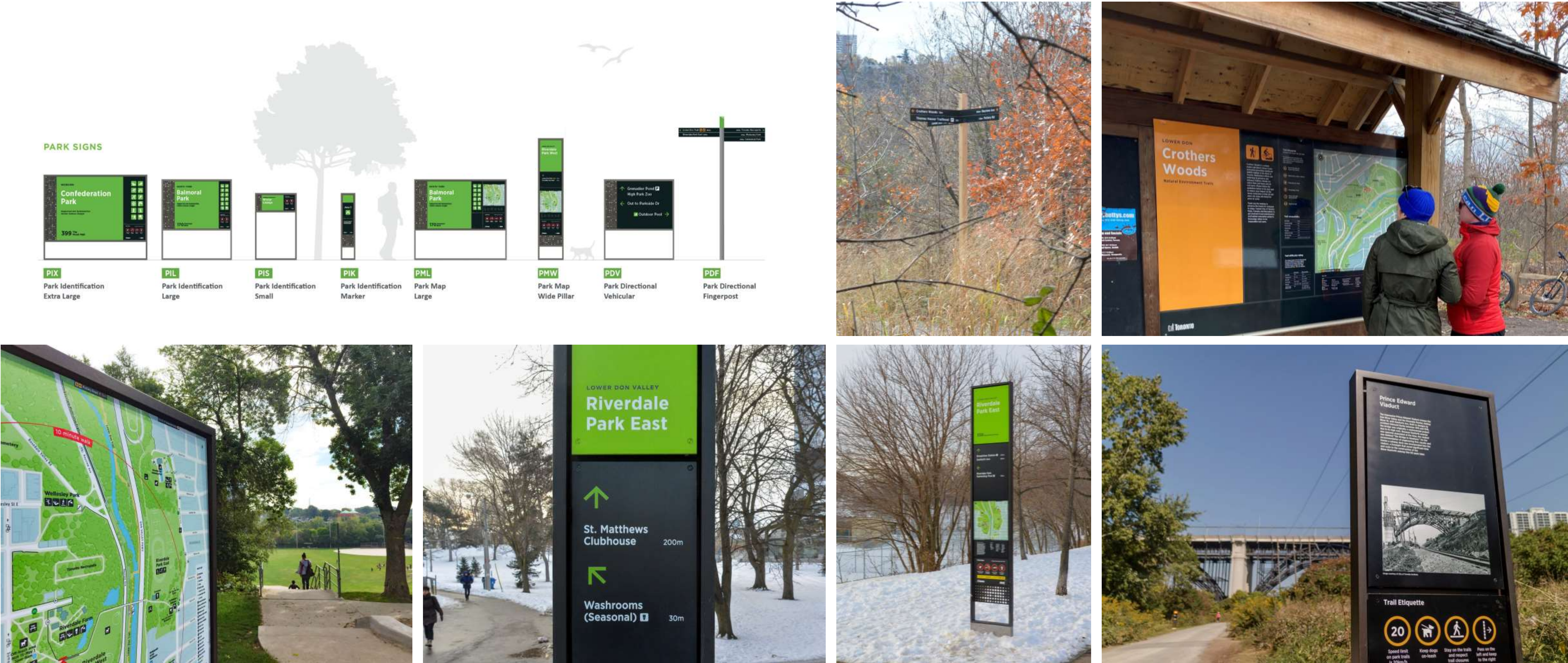
# Lakeshore / Cibola



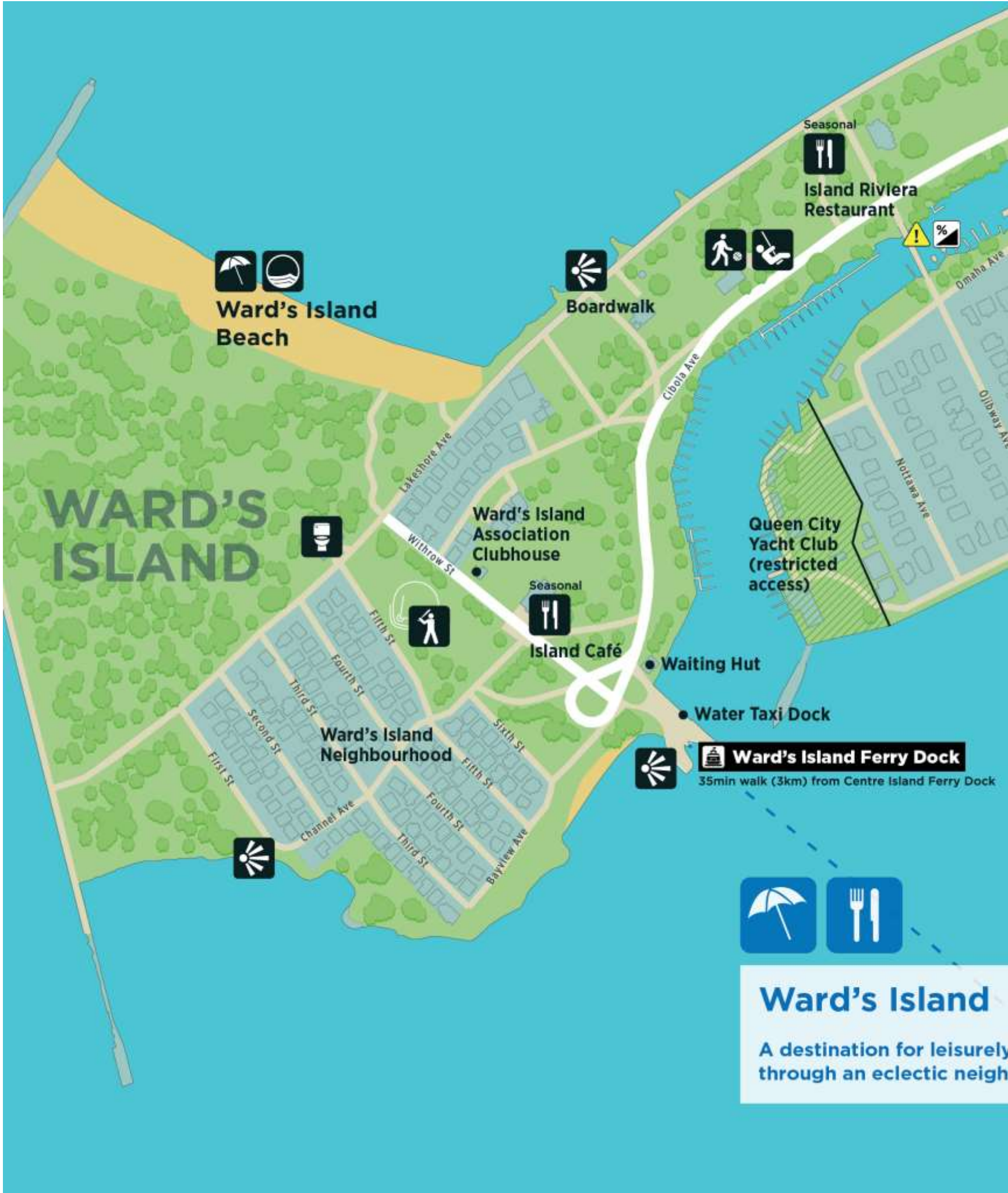
# Wayfinding and Navigation



# Toronto Parks & Trails Wayfinding Standard



# Park Map Pilot

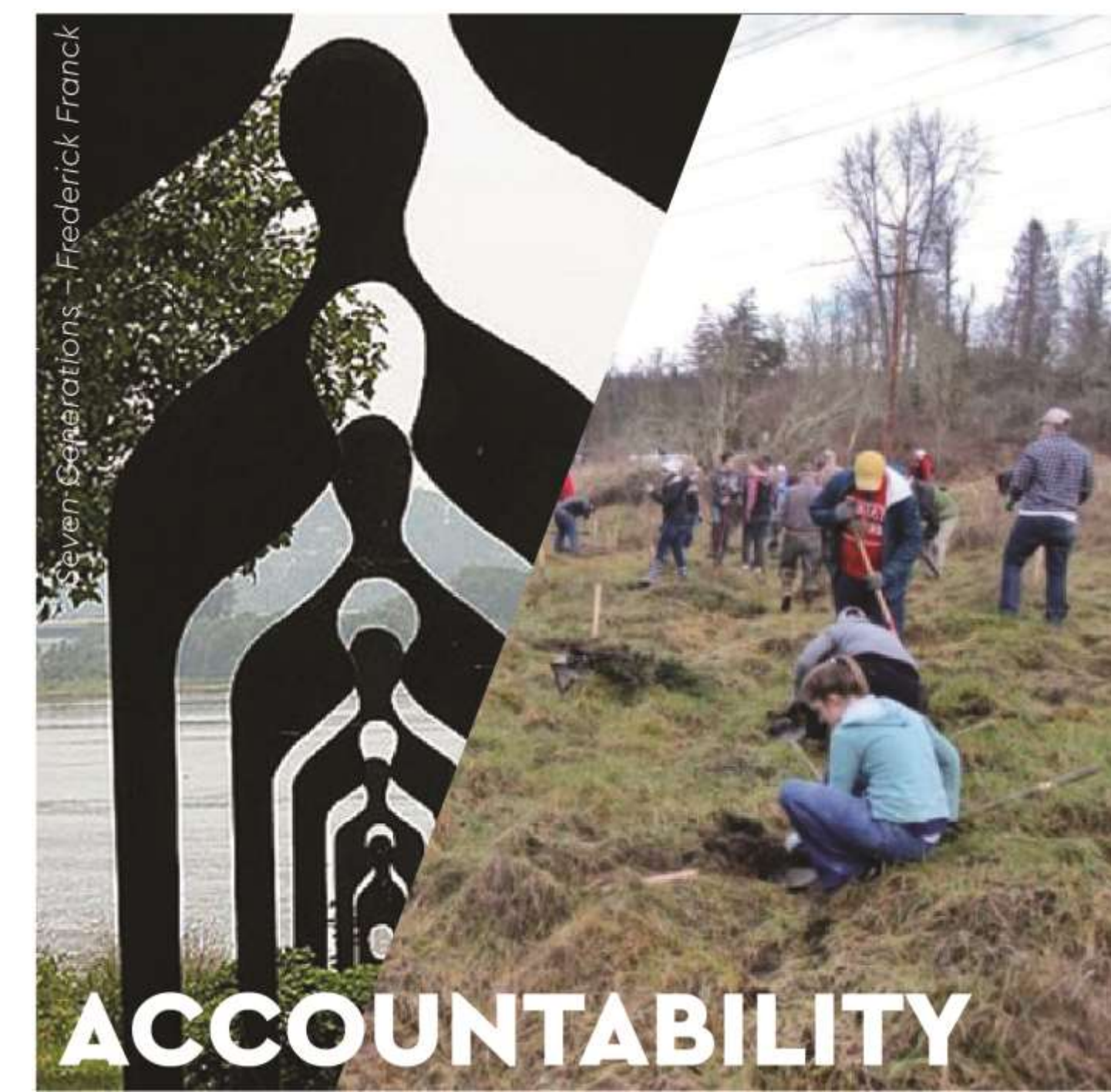
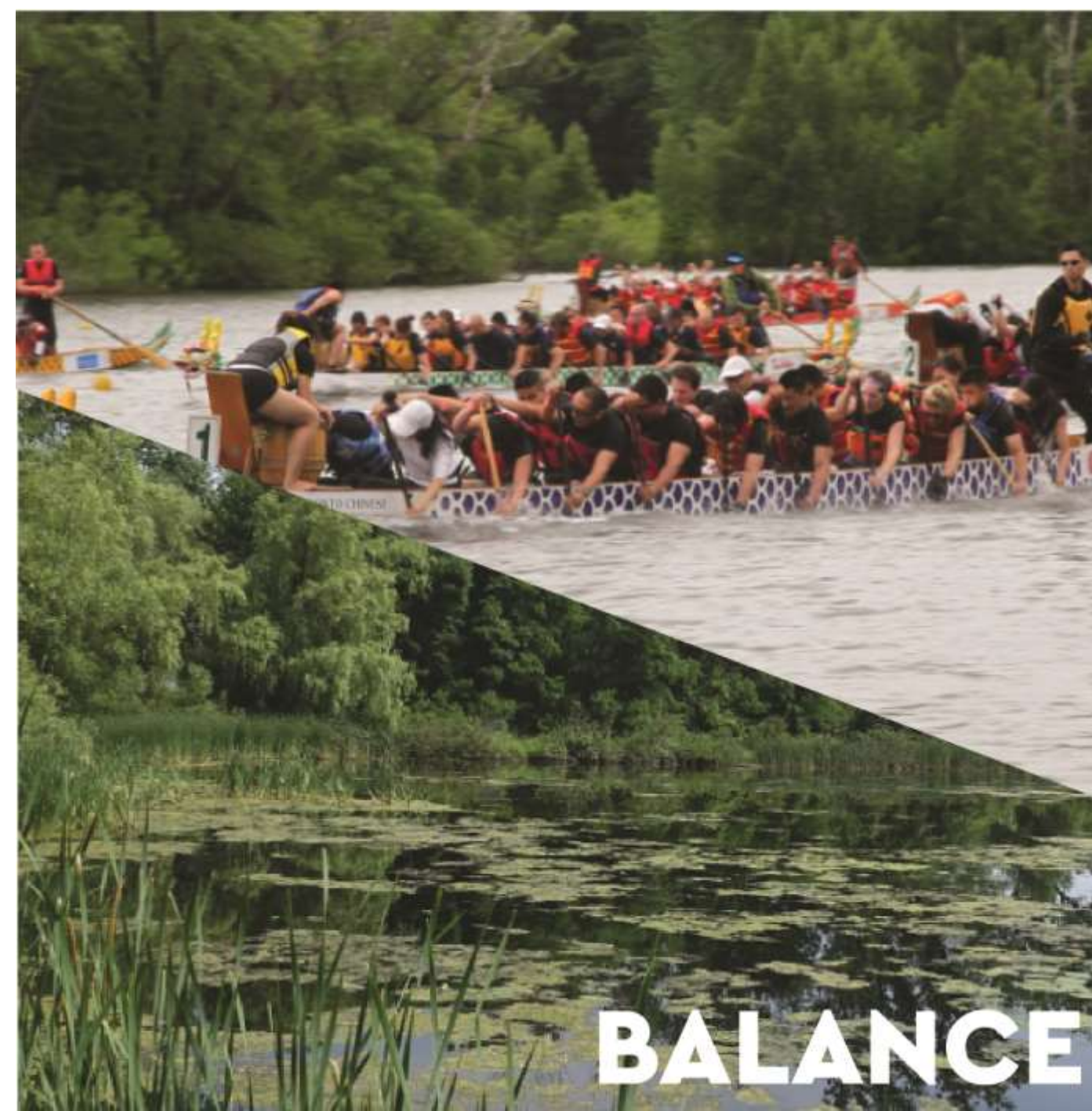
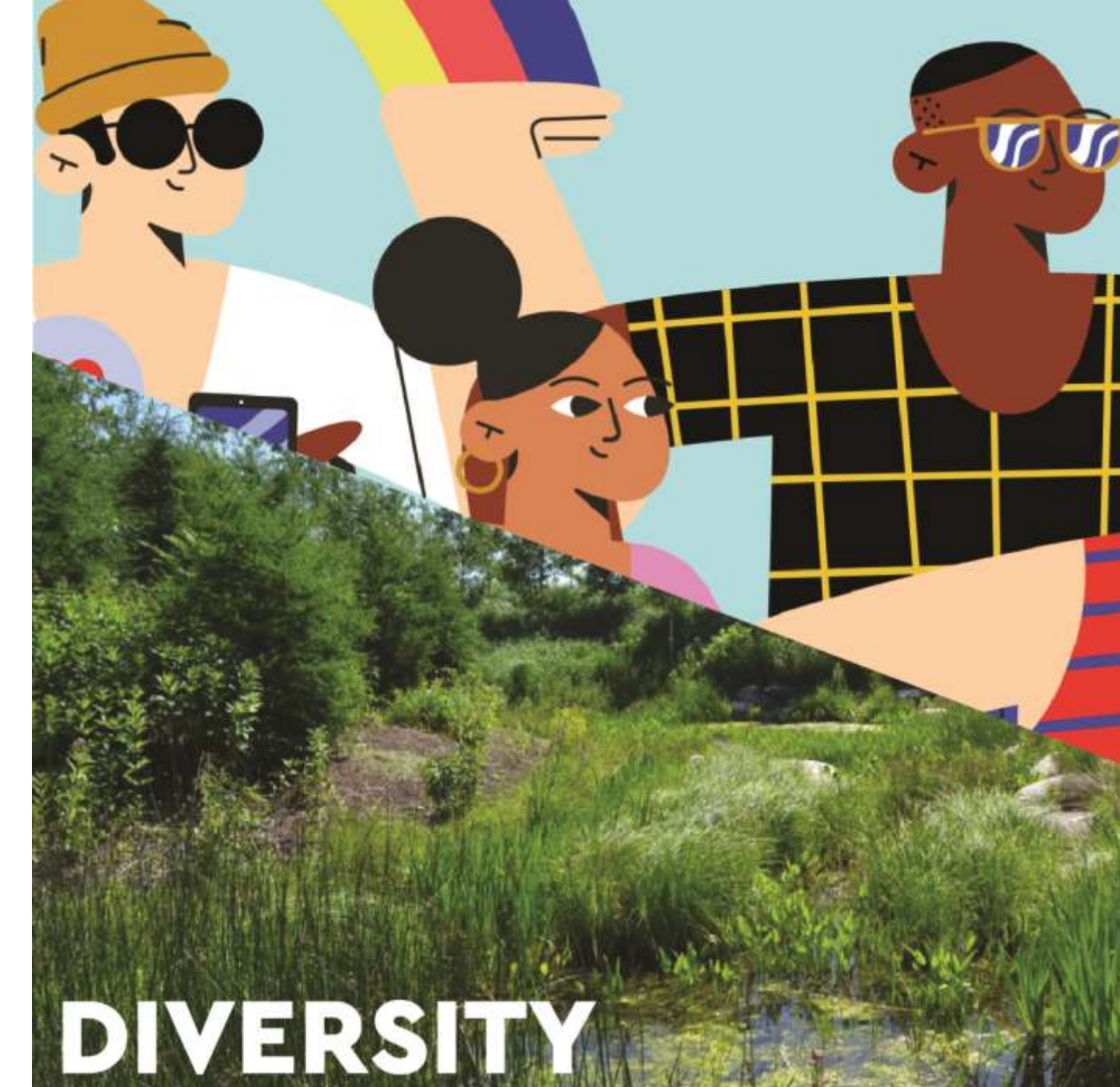


# Understand the current drivers\*

*\* A challenge or opportunity that is driving the need to improve Toronto Island Park*

- The Island's **one-of-a-kind identity** is uncelebrated.
- The **Indigenous history and significance** of the Island is not well known.
- The Island's **cultural and natural heritage** are undervalued.
- The Toronto Island **visitor experience** could be improved.
- The Island has unrealized and **under-realized business opportunities** that should be explored and improved to advance a holistic visitor experience.
- **Access and Accessibility** – It can be difficult to get to the Island.
- Toronto Island is a **dynamic natural environment** that is constantly changing.
- Toronto Island and its supporting **infrastructure is aging**.
- **Population Growth** is placing increasing demands on Parks.

# Identify the values



# Outline a vision to inspire



## **PROTECT + RESTORE**

Integrating stewardship and resilience into managing sensitive environments; creating safe, welcoming spaces for all living beings; and preserving the sense of refuge and escape from urban life.



## **HONOUR + CELEBRATE**

Respecting the values and traditions of Indigenous peoples; making space for diverse perspectives to nurture a sense of belonging for all visitors; and sharing broad stories of this complex place.



## **PLAY + EXPLORE**

Embracing the joy and wonder of this place; delivering unique and accessible activities that are Island-specific; and creating a culture of collaboration and sharing to reveal new ways to experience the park.

# Establish guiding principles grounded in the values

- Honour and respect Indigenous communities, placekeeping, and their rights and responsibilities to the islands and water
- Celebrate and protect the unique cultural identity and spirit of the islands
- Prioritize, protect, and advocate for the ecological integrity of the islands
- Leverage the dynamic nature of the islands and waterways to support adaptive and flexible uses
- Demonstrate resilience, sustainability, and responsible landscape and water management
- Prioritize equitable access and inclusion and correct the perception of private and public spaces within the park's limits
- Enhance visitor experience for all seasons
- Provide diverse amenities and experiences to encourage exploration, sharing, and discovery
- Support opportunities for diverse and sustainable businesses to thrive
- Develop evidence-based strategic investments to ensure long-term and continued success, and plan in a financially sustainable manner
- Prioritize the enhancement and adaptation of undervalued assets to support new uses
- Ensure any new development embodies the spirit of the Island's character

# Understand the Island in the context of the Downtown, Core Circle and Waterfront parks

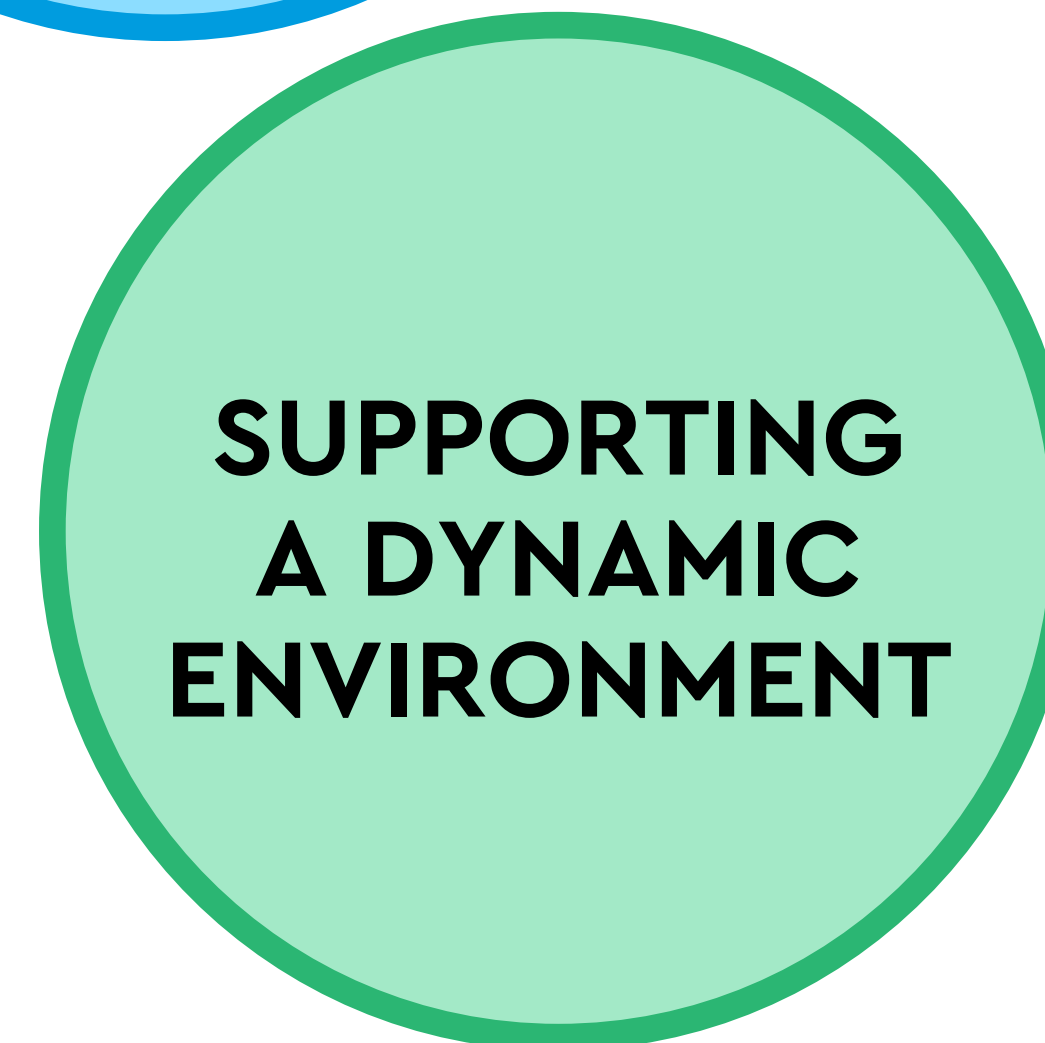


# Understand the Island in the context of future city and connected park systems



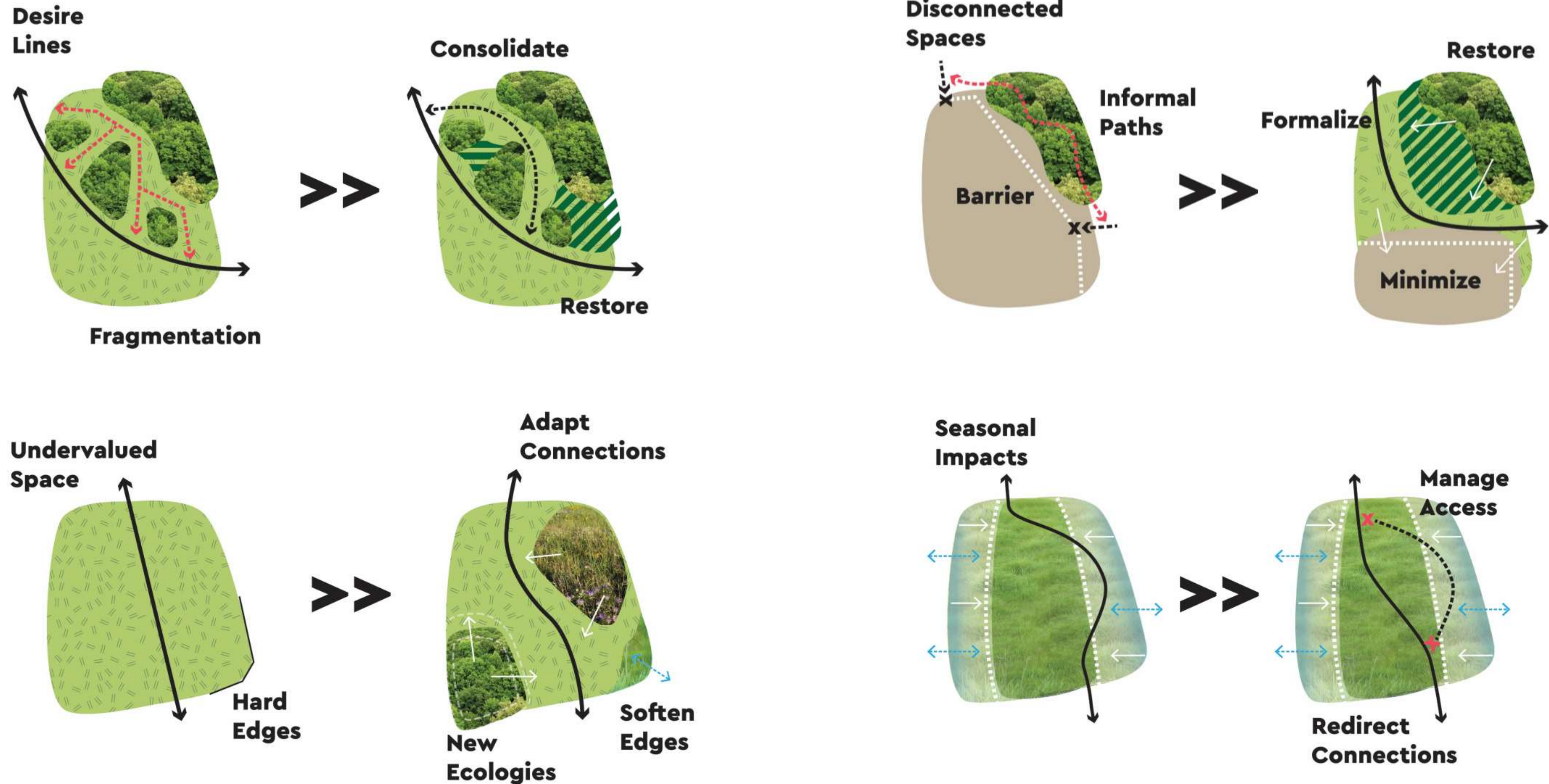
# Master Plan Lenses

*High-level themes that are used to evaluate and compare outcomes and proposals within the dual workstream framework and identify gaps that need further consideration and study*



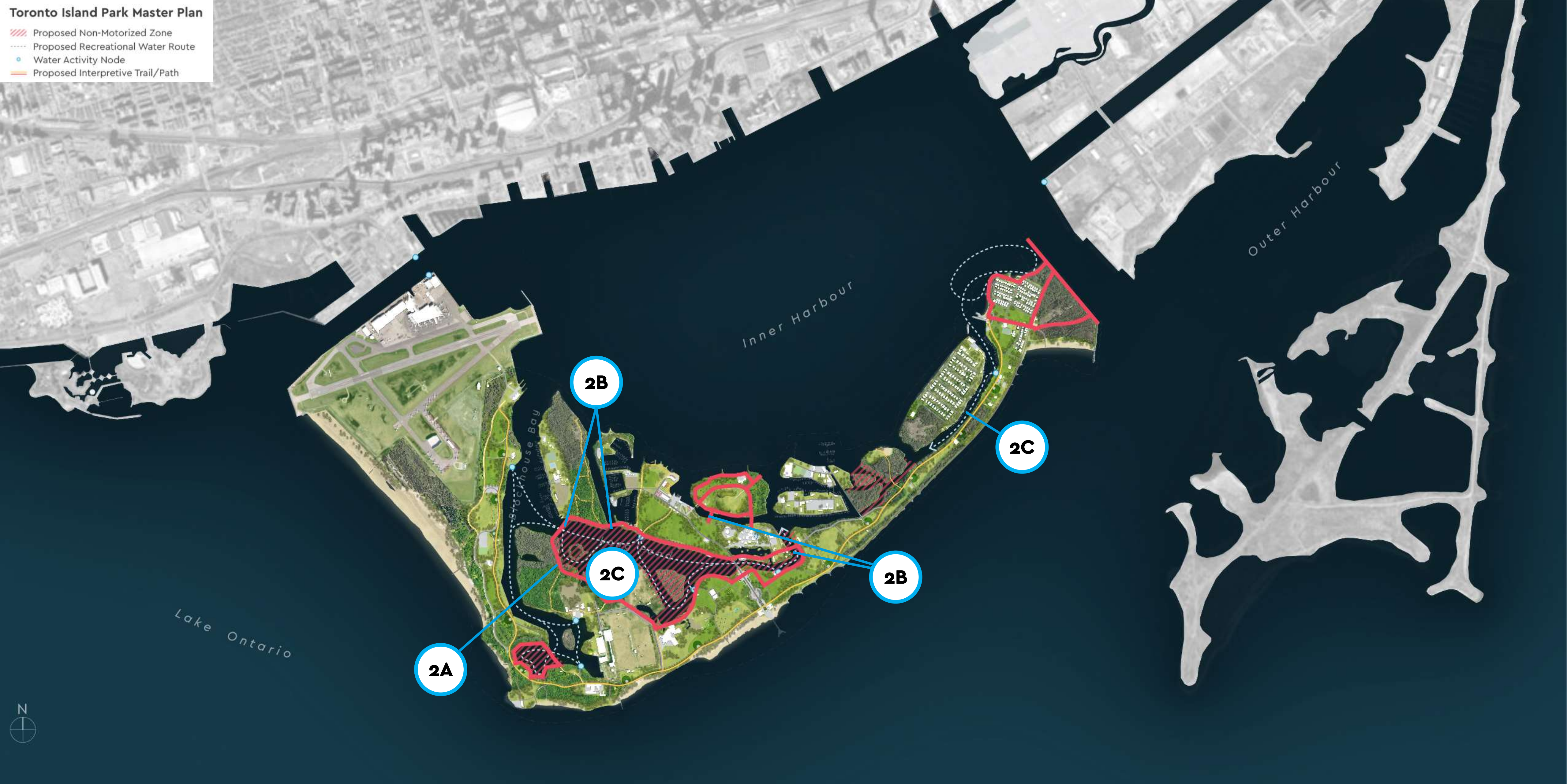
# Improving Access and Connection

# Light Touch + Informed Implementation











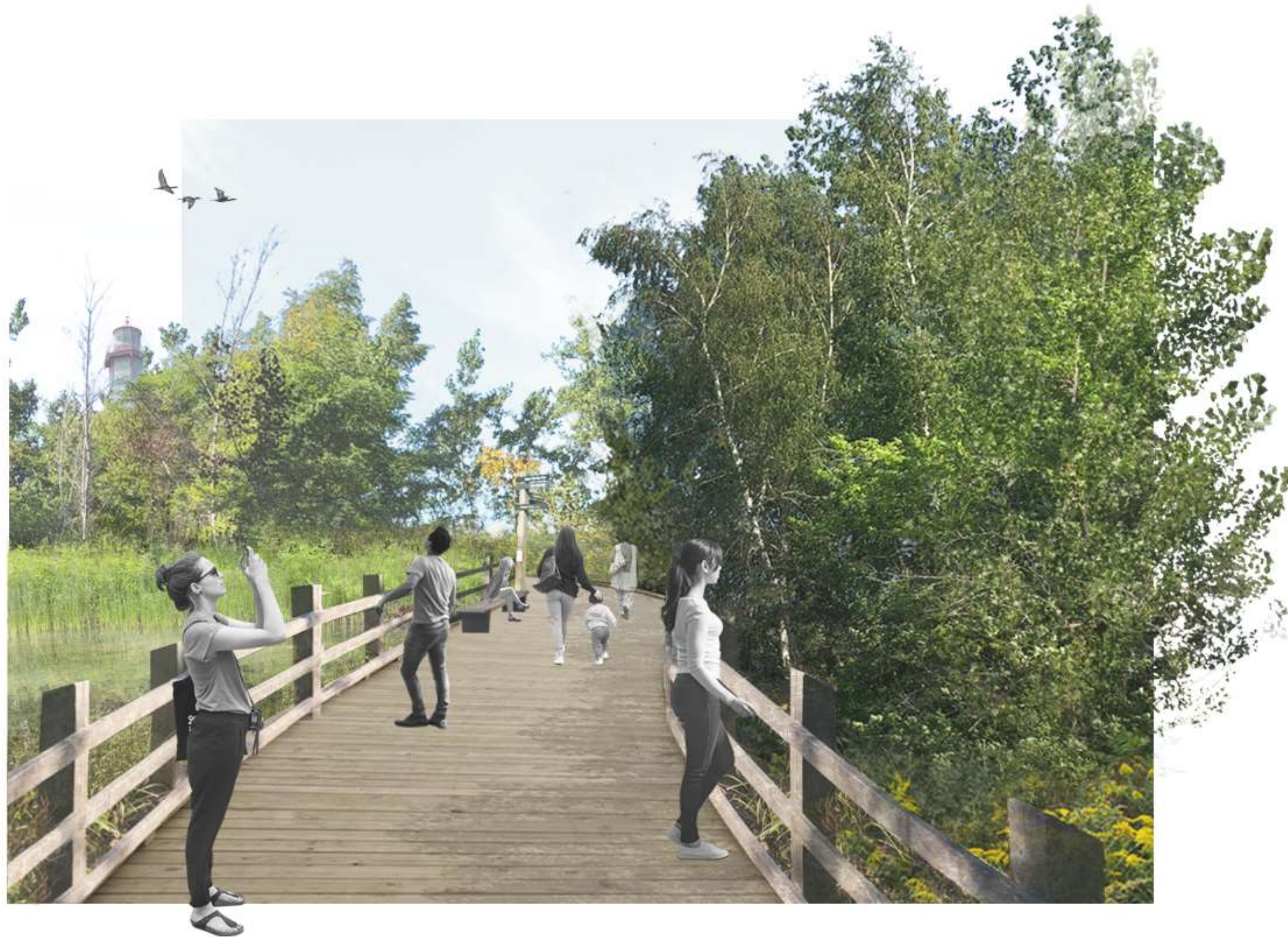
Mood Sketch: Multi-modal access on Primary Park Path



Mood Sketch: Rest Area Along Primary Park Path



Mood Sketch: Boardwalks outside of ESAs



Mood Sketch: Controlled Access Boardwalk within Natural Areas



Mood Sketch: Paddling on the Internal Waterways







While this plan does not exclude the potential of future bridge and tunnel connections between the city and the Island, the reality of an operational airport and shipping port at both ends of the park meant the improvements of this master plan needed to focus on options that could be executed in the near-term with both areas and existing operations remaining functional.

A green-tinted photograph of a park path. In the foreground, several people are walking and cycling away from the camera. The path is lined with lush green trees. In the background, the CN Tower is visible against a clear sky.

# Discussion



***Your insights and comments are appreciated!***

**Thank you!**