

New Park at 261 Nairn Ave.

Open House
February 22, 2022



Land Acknowledgement

We acknowledge the land we are meeting on is the traditional territory of many nations including the Mississaugas of the Credit, the Anishnabeg, the Chippewa, the Haudenosaunee and the Wendat peoples and is now home to many diverse First Nations, Inuit and Métis peoples. We also acknowledge that Toronto is covered by Treaty 13 with the Mississaugas of the Credit.



Meeting Objective

Let's Create a New Park!

Tonight we are presenting the preferred concept for the new park at 261 Nairn Ave.



Agenda

Webex Tips, Meeting Goals & Introductions

Presentation

- **Project Background**
- **Engagement**
- **Preferred Concept**

Questions and Discussion

Next Steps



Tips of Engagement for a Successful Virtual Meeting



All participants have been muted for this meeting.



All cameras have been **turned off** for this meeting.



Use the Q and A feature, Or click the hand icon, beside your name from the participants list on the right.




Computer audio issues? Use your cell-phone for audio by calling 416-915-6530 and enter meeting number **2468 415 0402**. Press *3 to ask a question.

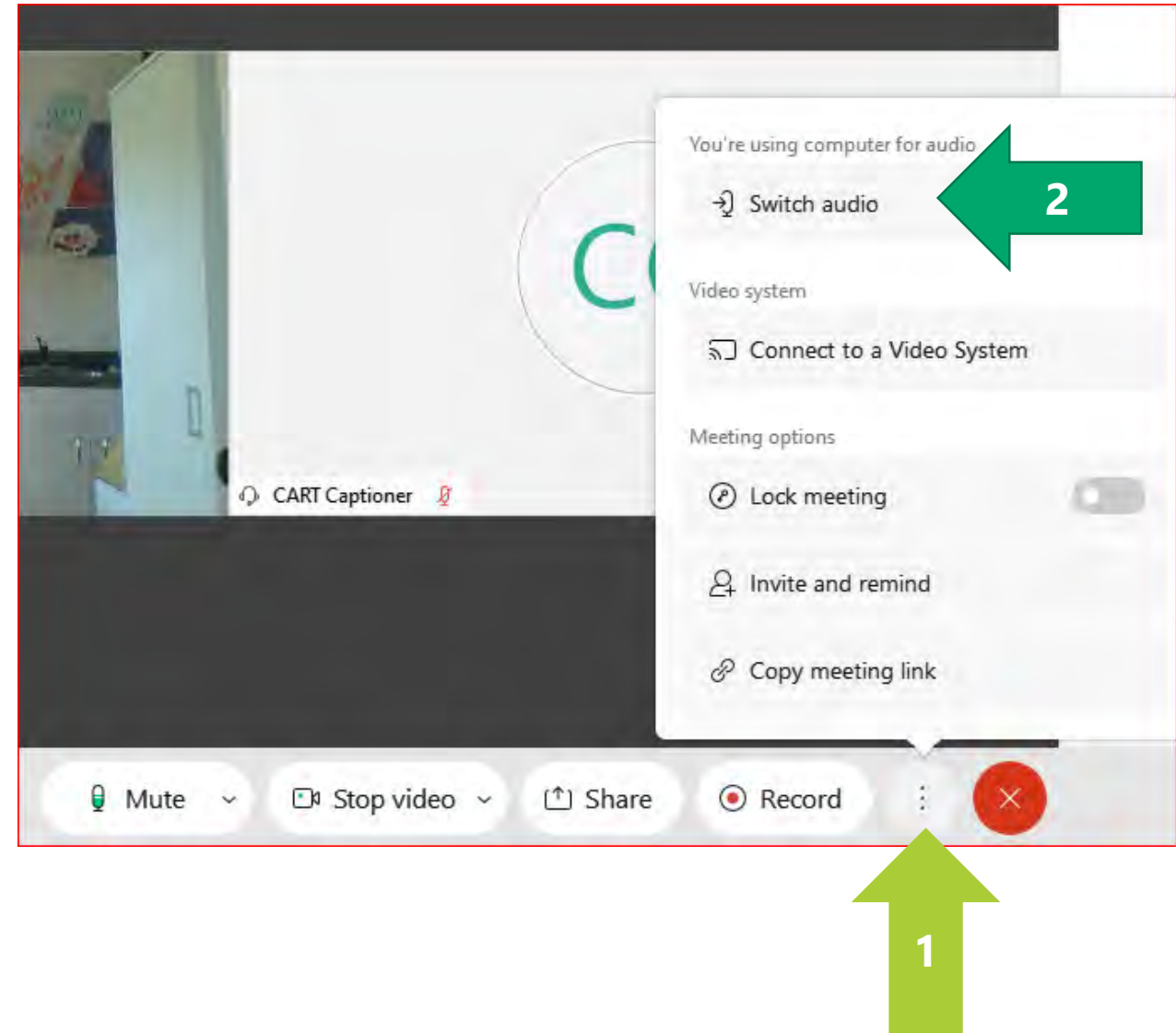


You will be given an opportunity to **ask panelists questions directly** during the Q&A.



Webex Audio Trouble?

1. Click the **More Options** button at the bottom of the screen 
2. Click **Switch Audio**
3. Use the **Call me at** function
 - a) Enter your phone number
 - b) Webex will call your phone (no long distance charges)



Project Team

CITY OF TORONTO

Parks Forestry and Recreation

Lara Herald

Senior Project Coordinator

Pablo Muñoz

Senior Public Consultation Coordinator

Alex Lavasidis

Senior Public Consultation Coordinator

DESIGN TEAM

Thinc Design

Nick Taylor

Landscape Architect

Emil Kovacevic

Landscape Designer



Opening Remarks

Deputy Mayor Ana Bailão
City of Toronto, Ward 9



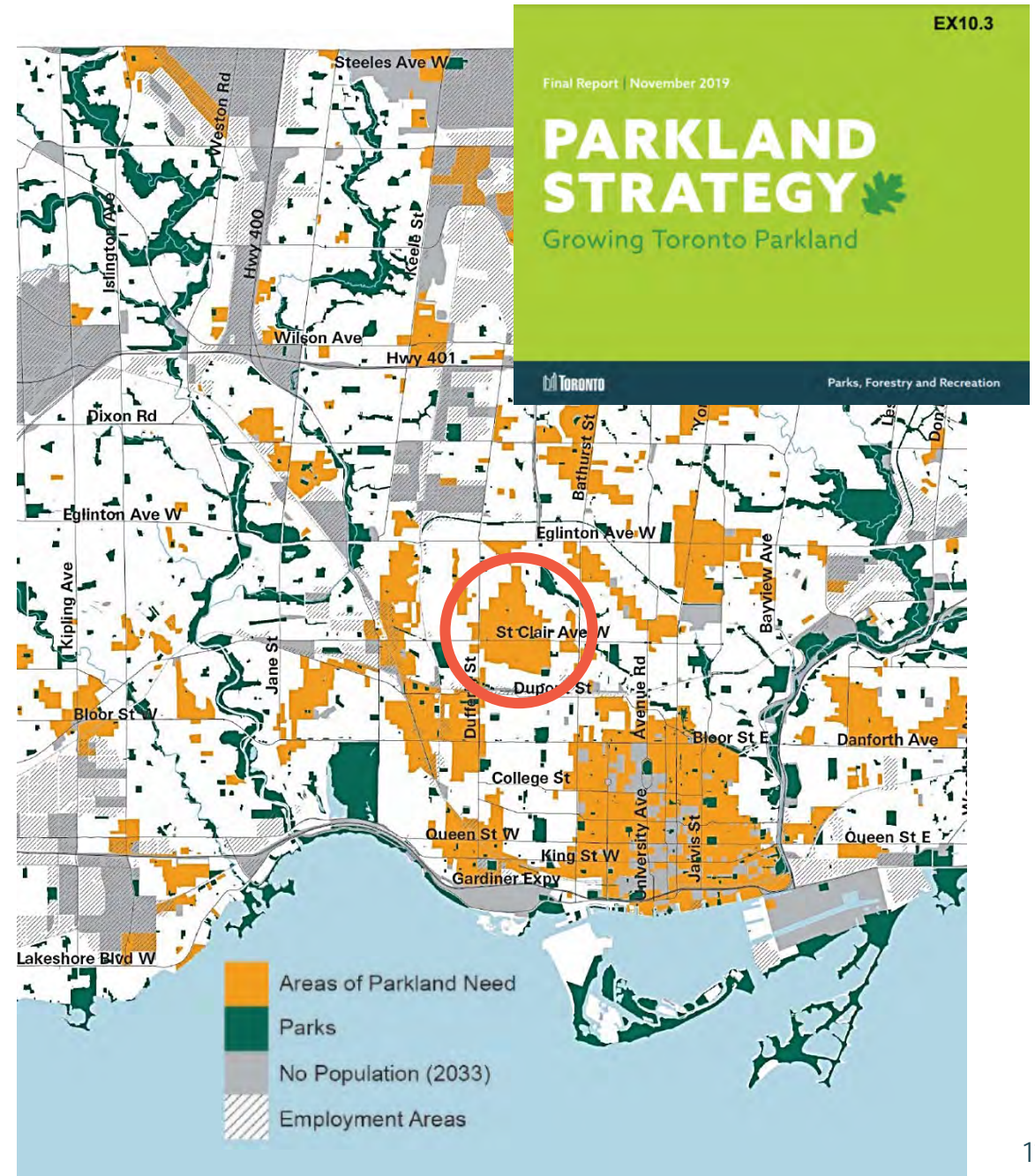
Background

Project Timeline



Background

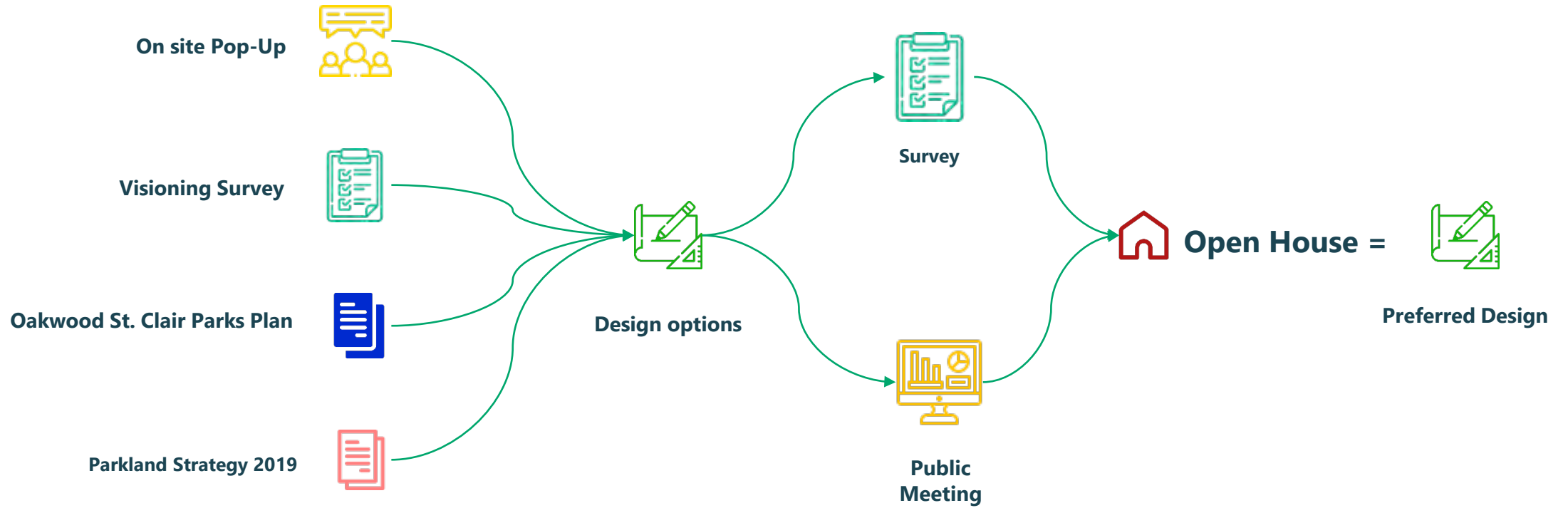
- Toronto's [Parkland Strategy](#) identified an area centred on the Oakwood Avenue and St. Clair Avenue West intersection as an **"Area of Parkland Need"**.
- "Areas of Parkland Need" are high-need areas, identified based on **compounding factors** such as low park supply, low income, and high growth, where the **City will prioritize parks planning and the creation of new parks**.



Engagement



Engagement



What we heard from visioning

The community would like this park to be a space for relaxing and playing!

Specific Features



Seating



Trees



Shade



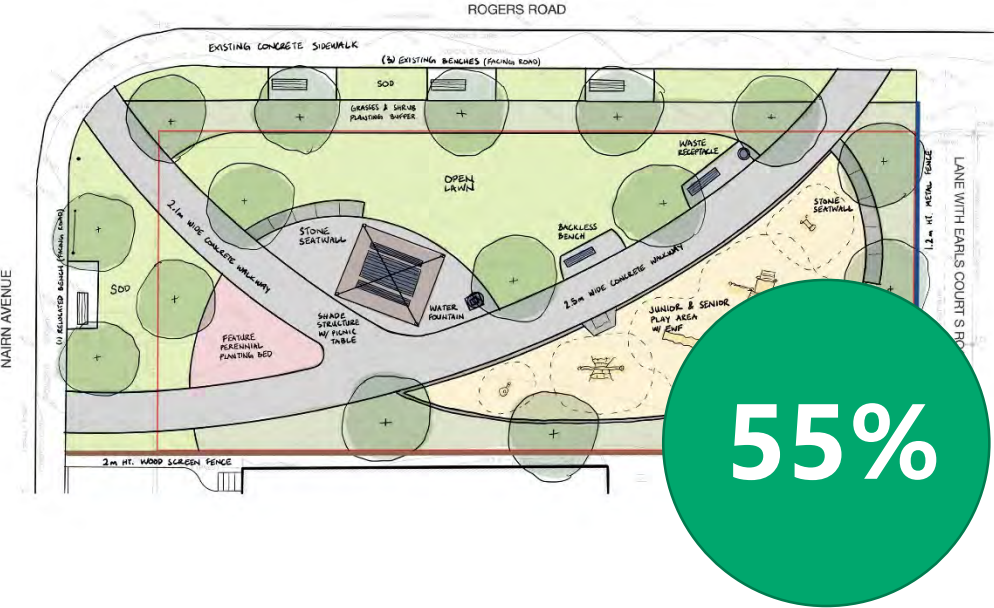
Fence

	Count	% of responses	%
Relax	741	<div></div>	65%
Use a children's play area	656	<div></div>	57%
Sit and/or eat	572	<div></div>	50%
Enjoy and observe planting areas	533	<div></div>	47%
Meet people/ gather with others	470	<div></div>	41%
Spend time with others	389	<div></div>	34%
Games (i.e., chess, ping pong, etc.)	325	<div></div>	28%
Spend time alone	277	<div></div>	24%

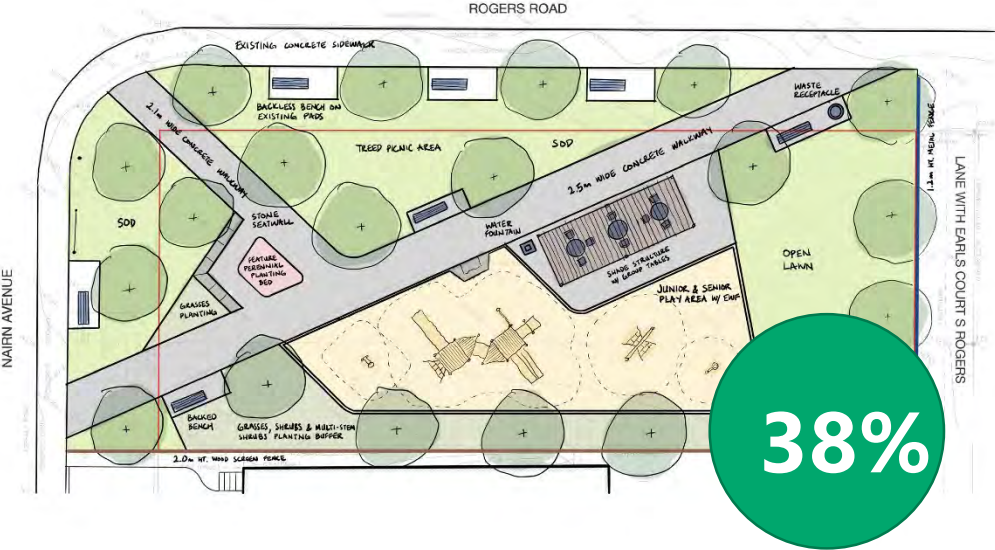
	Average	Count	% of responses
Seating areas (i.e. benches, seatwall)	16%	1.1k	<div><div>63%</div><div>28%</div><div>7%</div></div>
Trees	20%	1.1k	<div><div>61%</div><div>24%</div><div>12%</div><div>4%</div></div>
Shade feature (i.e. small shade structure)	20%	1.1k	<div><div>59%</div><div>25%</div><div>12%</div><div>4%</div></div>
Fence	31%	1.1k	<div><div>53%</div><div>17%</div><div>14%</div><div>16%</div></div>
Accessible pathways	32%	1.1k	<div><div>42%</div><div>32%</div><div>14%</div><div>12%</div></div>
Drinking fountain/bottle filler	34%	1.1k	<div><div>44%</div><div>25%</div><div>17%</div><div>15%</div></div>
Junior playground equipment	39%	1.1k	<div><div>45%</div><div>17%</div><div>15%</div><div>23%</div></div>
Open grass/lawn area	40%	1.1k	<div><div>31%</div><div>30%</div><div>26%</div><div>13%</div></div>
Picnic areas (i.e. tables)	46%	1.1k	<div><div>27%</div><div>26%</div><div>27%</div><div>19%</div></div>
Pollinator garden	47%	1.1k	<div><div>31%</div><div>23%</div><div>21%</div><div>25%</div></div>
Senior playground equipment	47%	1.1k	<div><div>31%</div><div>22%</div><div>22%</div><div>25%</div></div>

What we heard from the concept options

Concept A



Concept B



Playground Themes

52%



Nature Inspired

31%



Modern/Traditional

18%



Contemporary

Additional Features



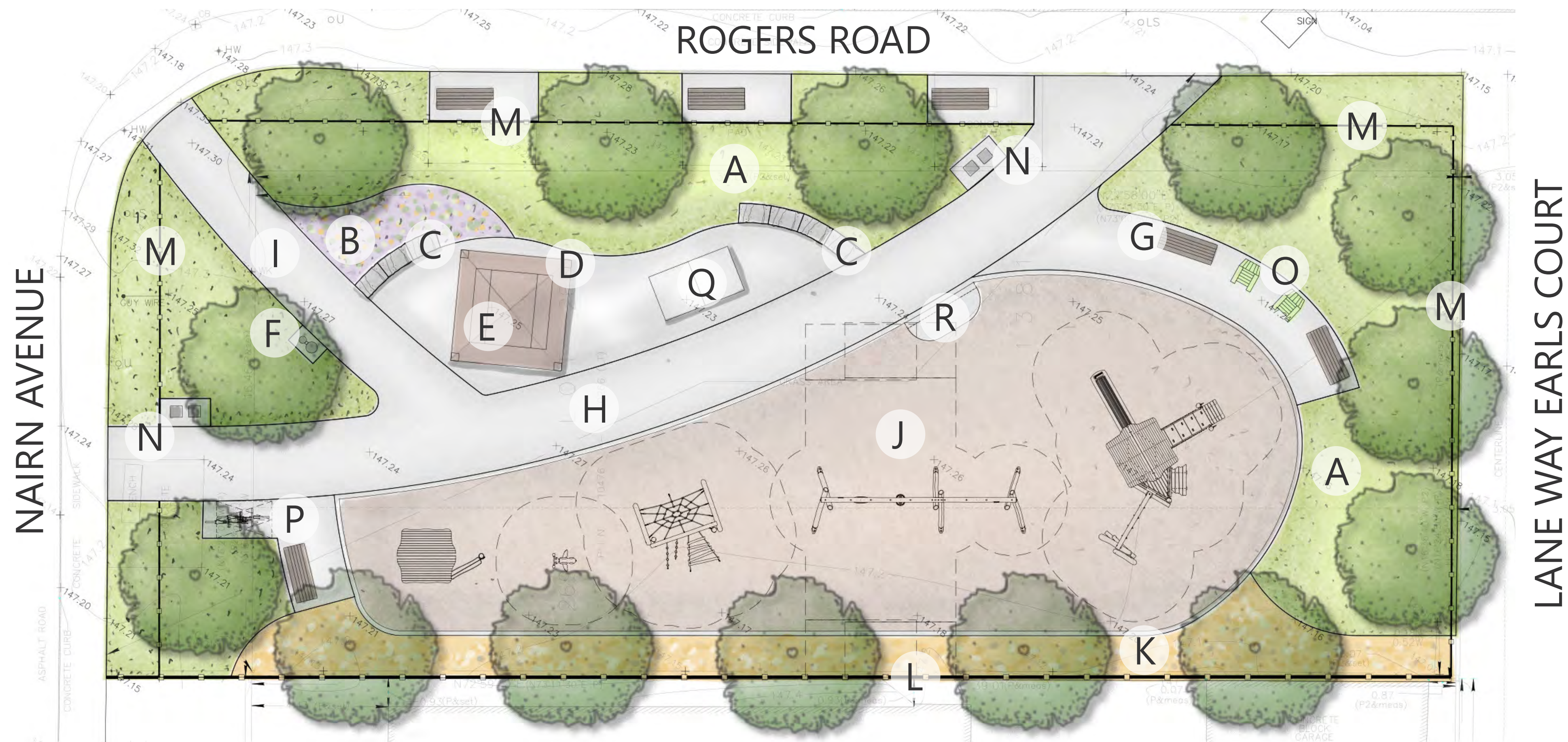
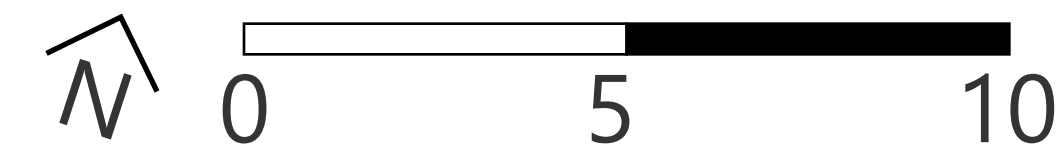
61%



58%

Concept Plans

Concept Plan



- | | | | | | |
|---|------------------------------|---|--|---|-----------------|
| A | open lawn | H | 3.0 m wide concrete walkway | O | muskoka chairs |
| B | planting bed* | I | 2.1 m wide concrete walkway | P | bike racks |
| C | armourstone seat wall | J | play area with cedar weave mulch surface | Q | ping pong table |
| D | shade structure | K | grasses and shrub planting | R | accessible ramp |
| E | accessible picnic table | L | 2.0 m high wood fence | | |
| F | water fountain/bottle filler | M | 1.2 m high metal fence | | |
| G | accessible bench | N | waste/recycling bins | | |

*community perennial bed pending confirmation of community participation in PollinateTO program

Materials Palette

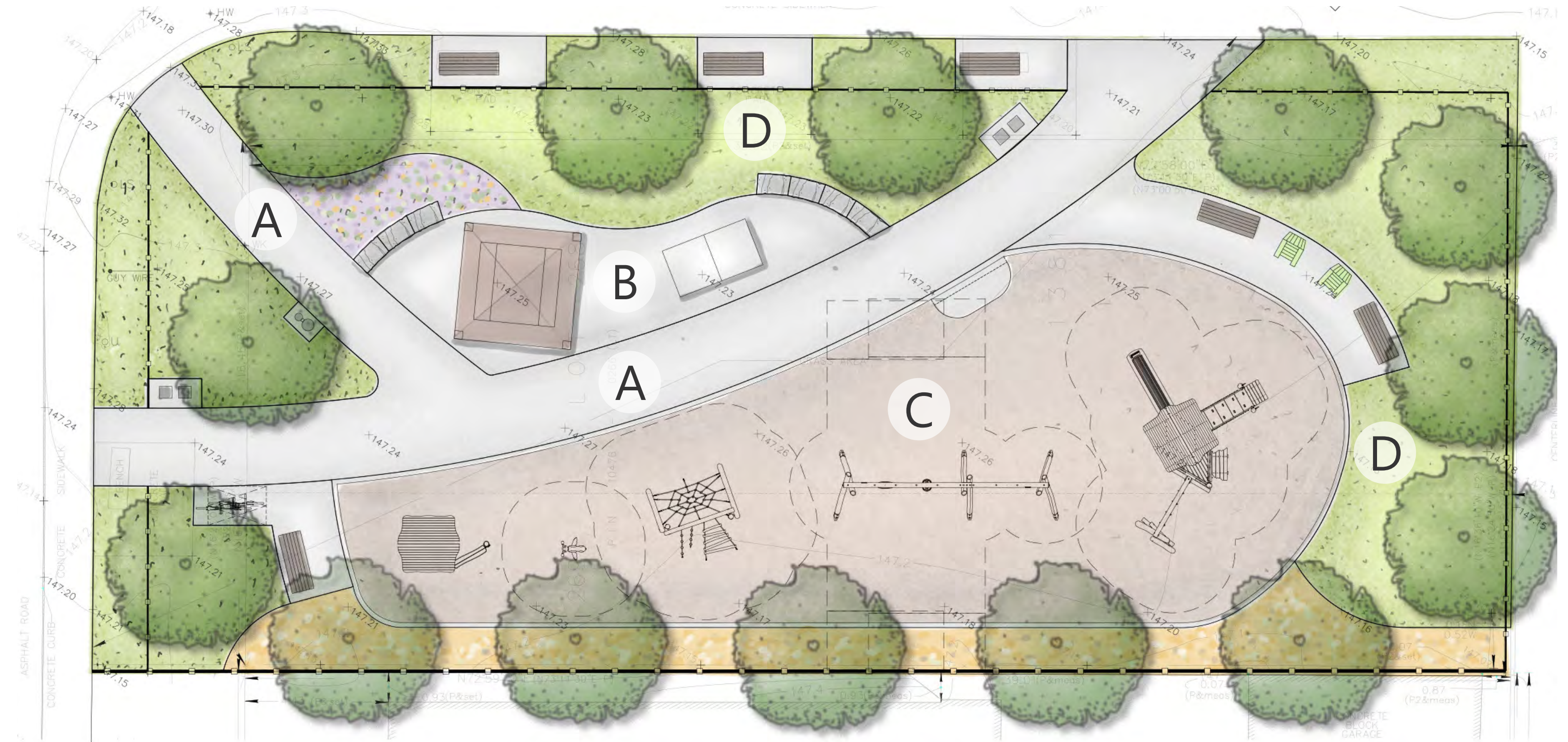
Surfacing



A - Concrete Pathway



B - Concrete Paving with Decorative Control Lines



C - Fiber Weave Cedar Safety Surfacing



D - Sodded Open Lawn

Play Equipment



A - Play House

- Age group: 2-5



B - Bee Springer

- Age group: 2-12



C - Swing Set

- Accessible, toddler and standard seat
- Age group: 2-12



accessible swing seat



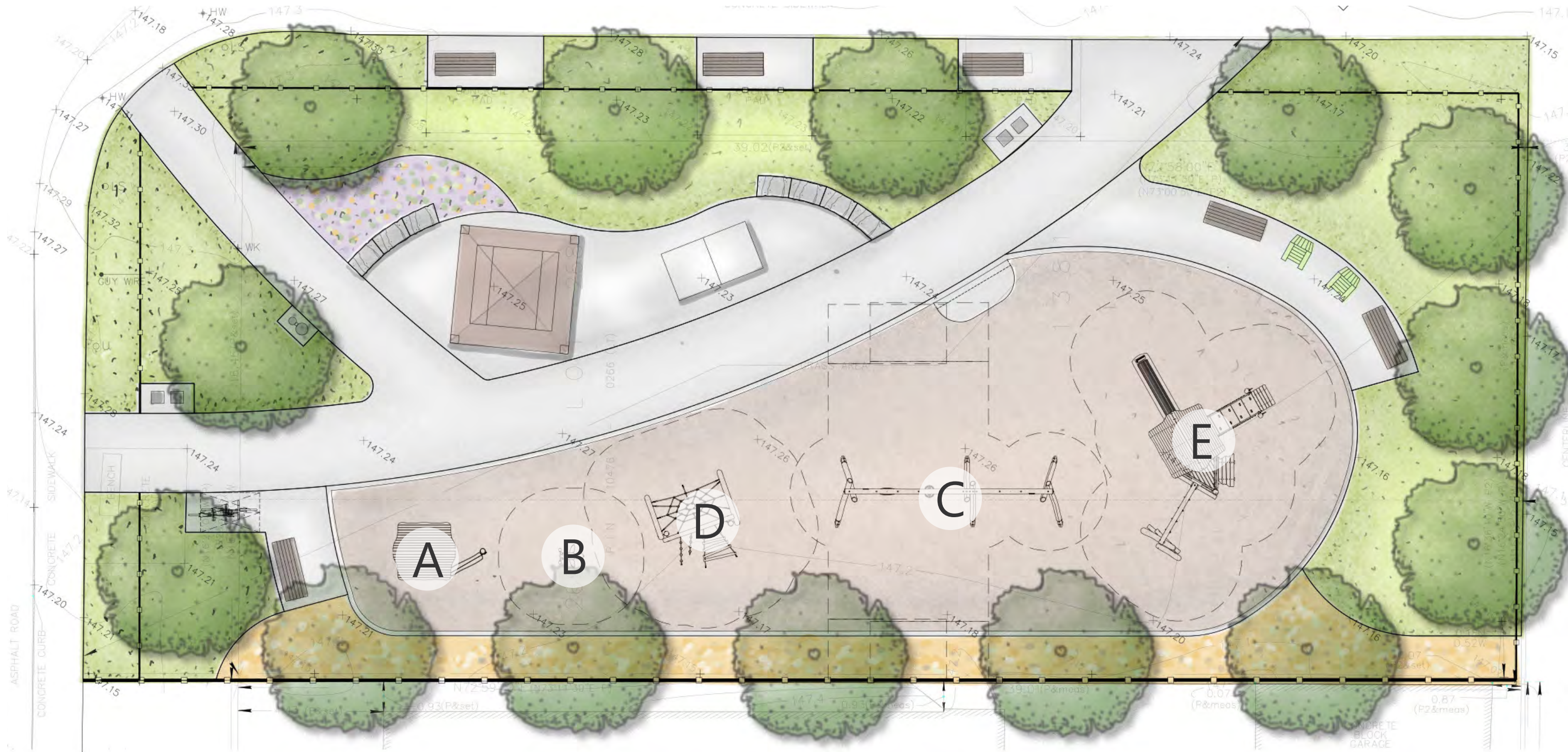
D - Climbing Net

- Age group: 2-12



E - Play Structure

- Featuring: Accessible stairway, rock climber, monkey bars, desk and slide
- Age group: 2-12



Amenities

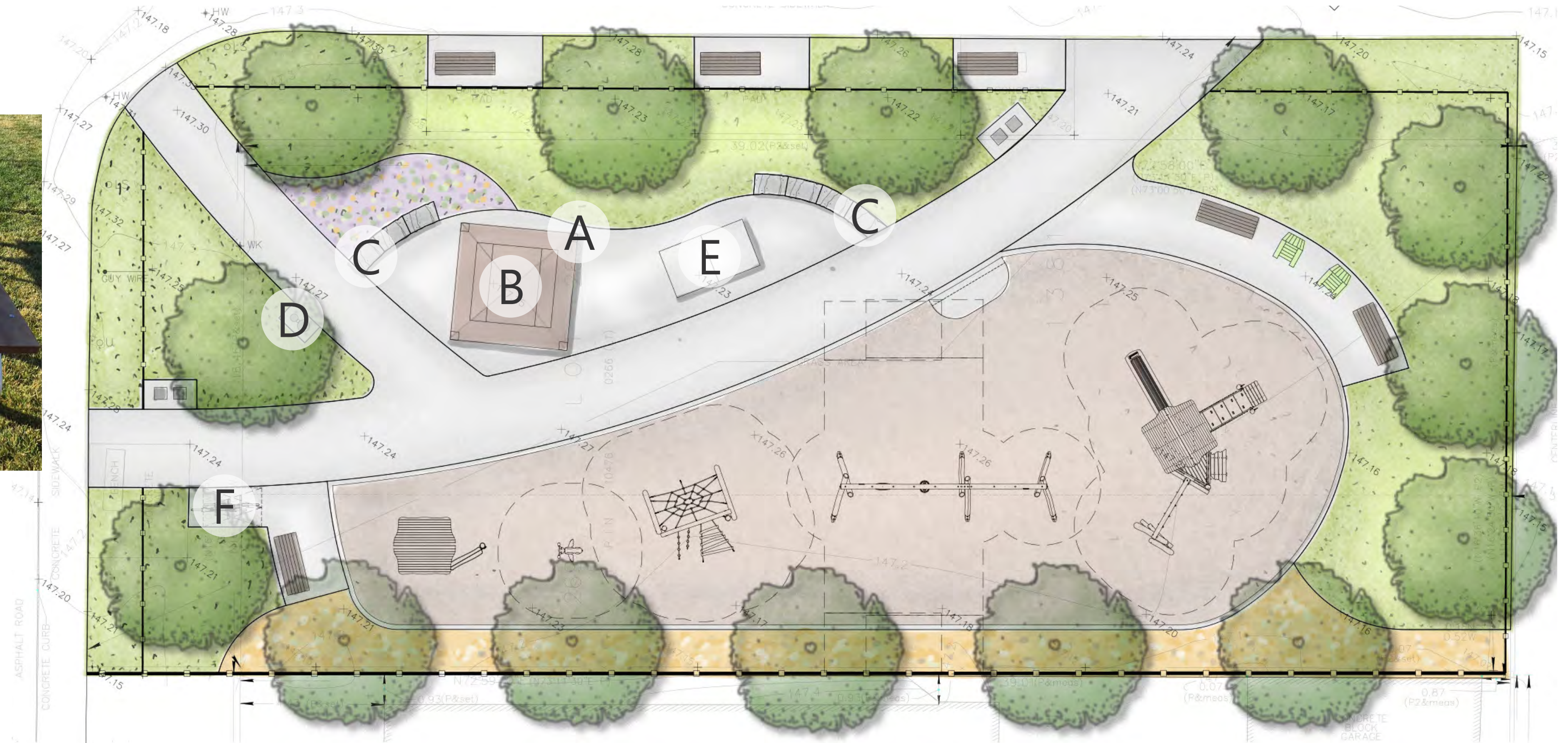


A - Shade Structure

- budget permitting



B - Accessible Picnic Table



C - Armourstone Seat Wall



D - Water Fountain/Bottle Filler

- budget permitting



E - Concrete Ping Pong Table



F - Bike Ring

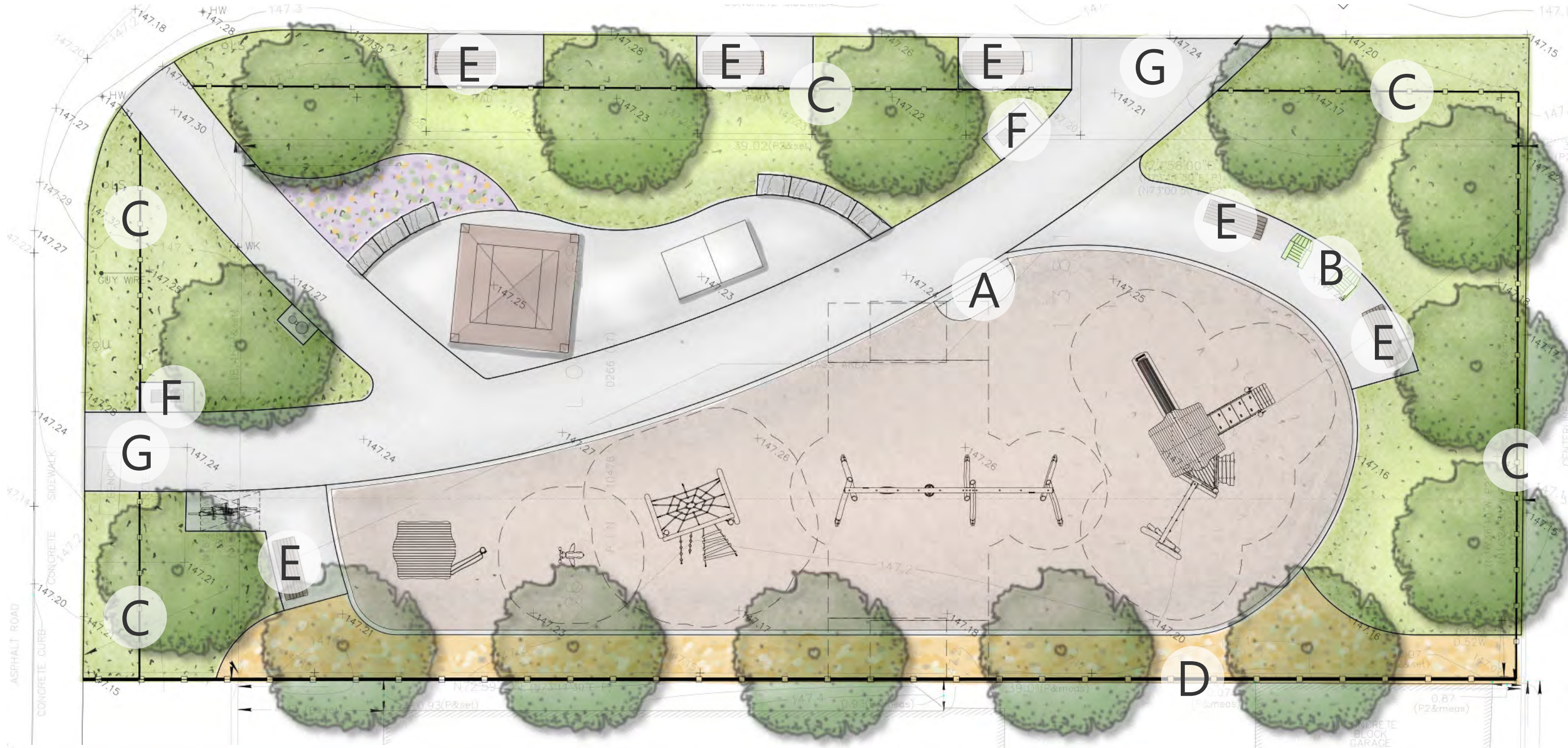
Amenities (Continued)



A - Accessible Concrete Ramp



B- Muskoka Chairs



C- 1.2 m High Metal Fence



D- 2.0 m High Wood Fence



E - Accessible Backed Bench



F - Garbage/ Recycling bins



G - P-Gate

Planting



A - Deciduous Shade Tree



B - Deciduous Shrub Buffer



C - Coniferous Buffer

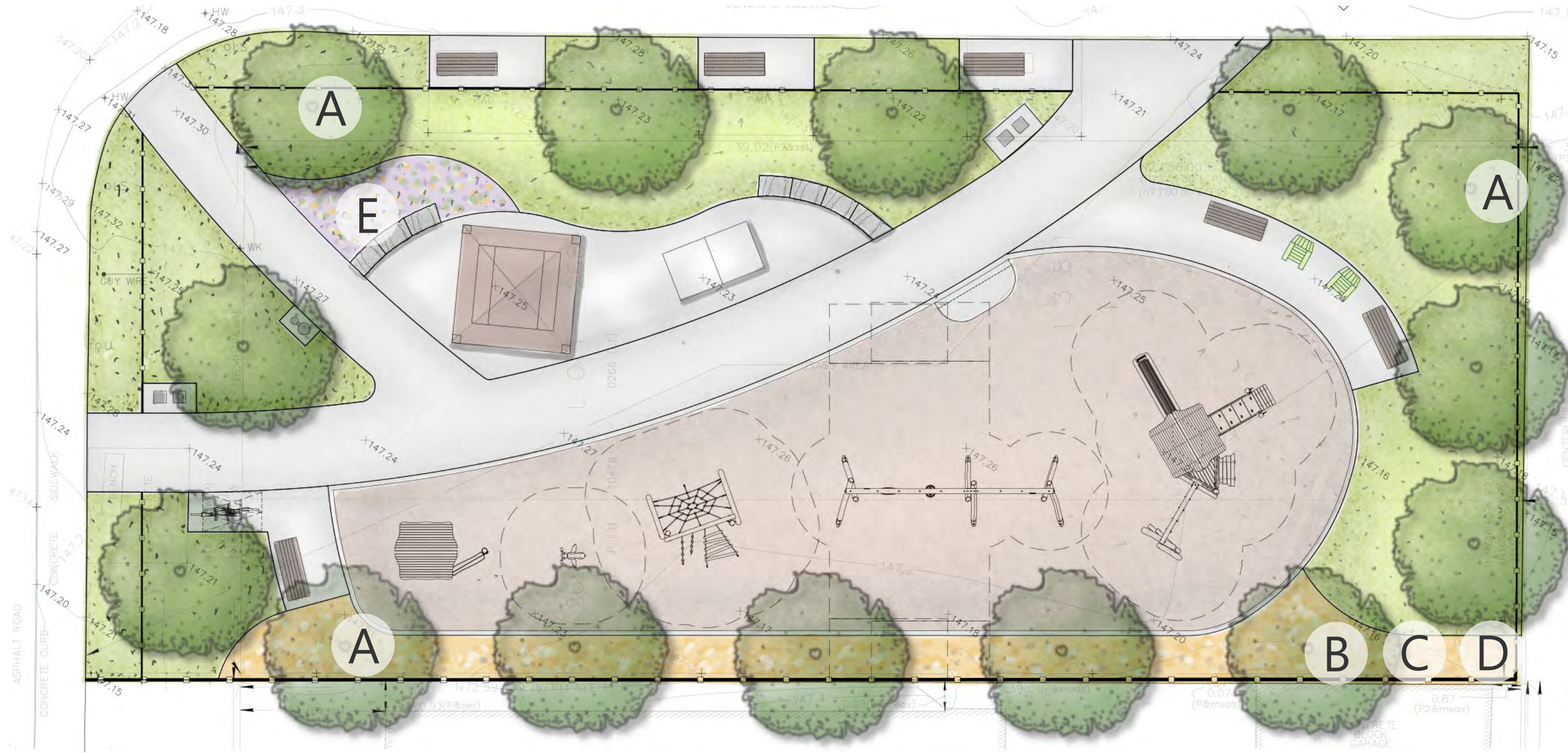


D - Ornamental Grass Buffer



E - Planting Bed*

*community perennial bed pending confirmation of community participation in PollinateTO program



HOW TO PARTICIPATE: RAISE YOUR HAND OR USE THE CHAT

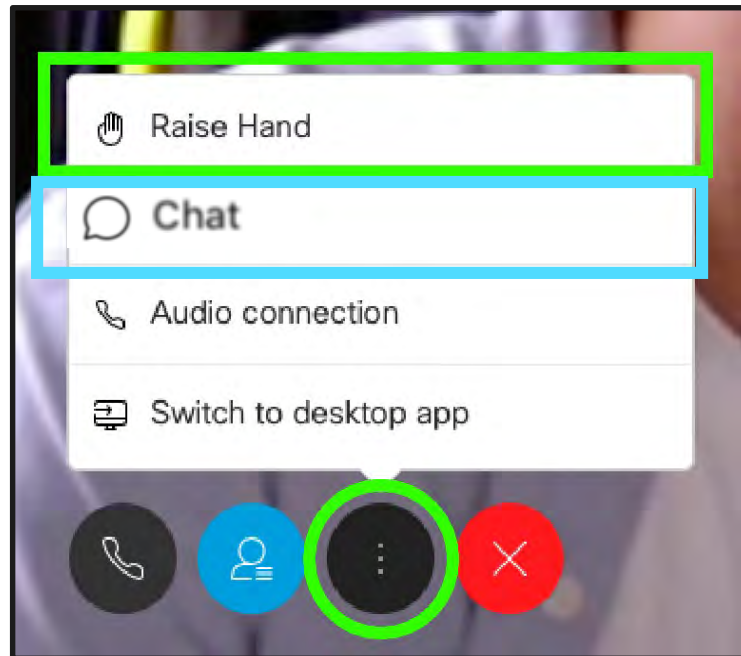
To ask a question and share feedback, you can virtually raise your hand.

IF YOU ARE
USING A
COMPUTER



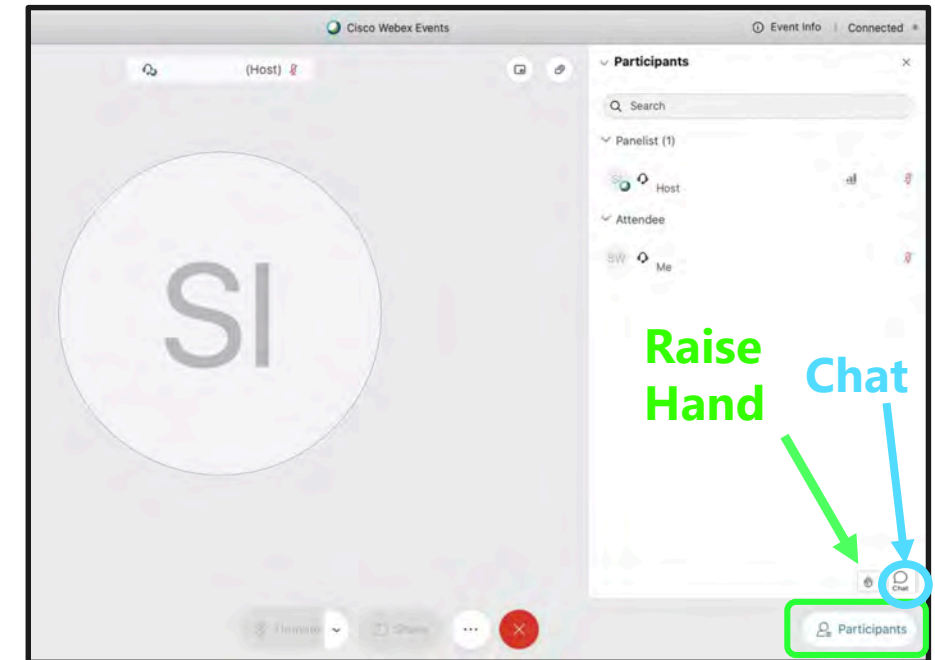
Via the internet browser

Click the "..." button at the bottom of the video window and select "Raise Hand" or "Chat".



Via the Webex App

Click the Participants button at the bottom of the video (the Participants panel will open to the right). Then click the "Raise Hand" or "Chat" button at the bottom right.



HOW TO PARTICIPATE: RAISE YOUR HAND OR USE THE CHAT

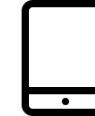
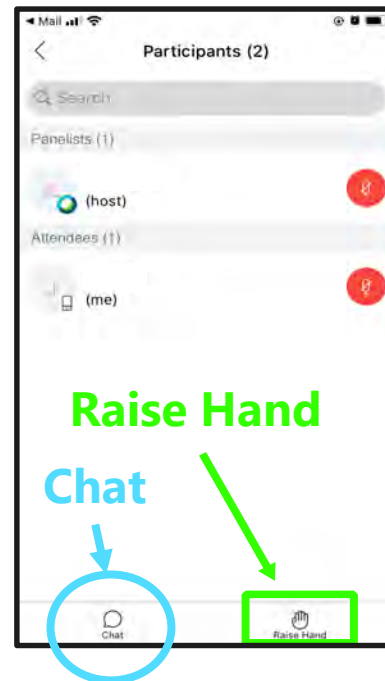
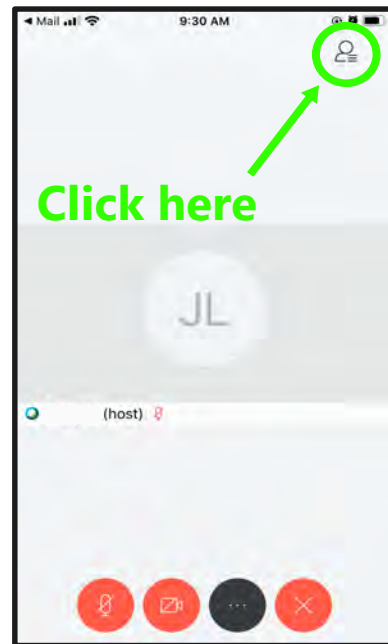
To ask a question and share feedback, you can virtually raise your hand or ask a question in the chat.

IF YOU ARE
USING A
SMARTPHONE
OR TABLET



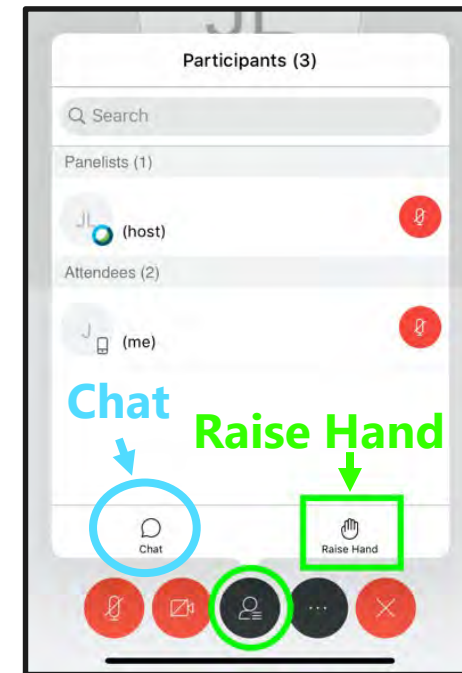
For smartphones

Click the Participants panel button at the top right corner of the screen. Then click "Raise Hand" or "Chat" at the bottom right of the screen.



For tablets

Click the Participants panel button at the bottom of the screen. Then click the "Raise Hand" or "Chat" button at the bottom right.



Questions of Clarification

Play Equipment



Discussion

Next Steps



Thank you for building a new park
with us! For project updates visit:
toronto.ca/261nairnpark