

# New Park at 411 Victoria Park Ave

Virtual Community Meeting

**Phase 2: Proposed Design**

March 8, 2022



**\*Please note that all attendees have been muted until the discussion period.**



# Objective of Tonight's Meeting

## Let's create a great new community park, together!

Tonight we are presenting the proposed design that has been developed for this new park.

A proposed design is an early stage in the design process, that broadly outlines proposes amenities, features, and layout of the space.

### Tonight we will:

- Provide a project update
- Present the proposed design for feedback
- Listen to your perspectives and feedback



The new park will be located on Gerrard Street East, east of Victoria Park Avenue.



# Project Context and Background

Mark Lowe

City of Toronto, Parks Forestry and Recreation



# How did we get here?

The proposed design presented today builds on the feedback and perspectives we heard from previous community engagement events.

## CreateTO Community Engagement - Spring 2014

- CreateTO conducted community consultations for an earlier development proposal for this site
- Comments from this consultation were used to help inform the park's design process - including desires to maintain the natural environment of the park, introduce water features, arts and cultural features, and places for gathering like shade structures and picnic tables.

## Student Engagement - Spring and Summer 2020

- The developer worked with Evergreen, Recreate Place, and Tropic Design to create a series of activities for students attending the nearby Blantyre Public School.
- Students were asked to imagine, design and develop their dream park.
- Through interactive workshops, they provided their ideas, vision, and priorities for the park which included inclusive play features for all and enhancing the natural environment

water fountain easy access nature  
animals  
play insects follow park rules taking photos  
kids fun activities  
explore  
multi-generations



Students from Grades 1-8 participated in a series of workshops and collaborative brainstorming sessions.



# How will this park be delivered?



## **Why is this new park being created?**

To coincide with the build out of a new mixed-use development at 411 Victoria Park Avenue, the developer has a commitment to jointly/mutually design and construct their parkland dedication with the City of Toronto Parks, Forestry and Recreation Division.

Parkland dedications are obtained through development applications, which are built to coincide with the build out of the development.



## **How are new parks that involve developers typically funded?**

New parks such as this are typically funded through the Parks & Recreation component of the Development Charges, funding through a Section 37 agreement, through donations, partnerships, or a combination of the above.



## **How are parks maintained?**

Typically, parks that involve developers are either maintained by the City's Parks Operations and Maintenance Branch, or by the land owner/condominium corporation.

# Anticipated Project Timeline

To stay up to date on this project, sign up for e-updates at [toronto.ca/411VictoriaPark](https://toronto.ca/411VictoriaPark).

We're  
Here!

Fall to Winter  
**2022**

Community  
Engagement  
and Design  
Development

Spring  
**2022**

Detailed design  
development  
begins

Fall  
**2023**

Construction  
Construction of  
the new park  
begins!

Fall  
**2024**

Construction  
complete, new  
park opens

**March 8**  
Virtual Community  
Meeting

**March 8 to March 27**  
Online Survey

# Design Context

Gus Maurano  
The MBTW Group



# Masterplan

411 Victoria Park Avenue development is a 19.7-acre land, located at the north east corner of Victoria Park Avenue and Gerrard Street East. The new development will be arranged around a total of 2.37 hectares of public parkland, providing an array of passive and active programming including playground and Water Play areas, outdoor fitness, log play area, pedestrian and multi-use pathways, open lawns, as well as naturalized buffer planting.

The Site Plan includes 74,019 m<sup>2</sup> of residential gross floor area (condominiums and affordable housing) and 466 m<sup>2</sup> of retail space. A total of 689 vehicular parking spaces would be provided on the surface and underground, with 1,048 bicycle parking spaces also planned.





# Public Transportation and Green Space Network

## Parks within Walking Distance



## Transit Stops within Walking Distance





# Circulation



# Proposed Park Design

Gus Maurano  
The MBTW Group



# Concept | Landscape Plan

- 01 Sidewalk
- 02 Look Out Area
- 03 Naturalized Buffer
- 04 Outdoor Fitness Area
- 05 Log Play Area
- 06 Park Walkway
- 07 Playground
- 08 Splash Pad
- 09 Tree Planting and Seating Area
- 10 Open Lawn / Open Play Area





# Concept | Precedent Images



Open Lawn / Open Play Area



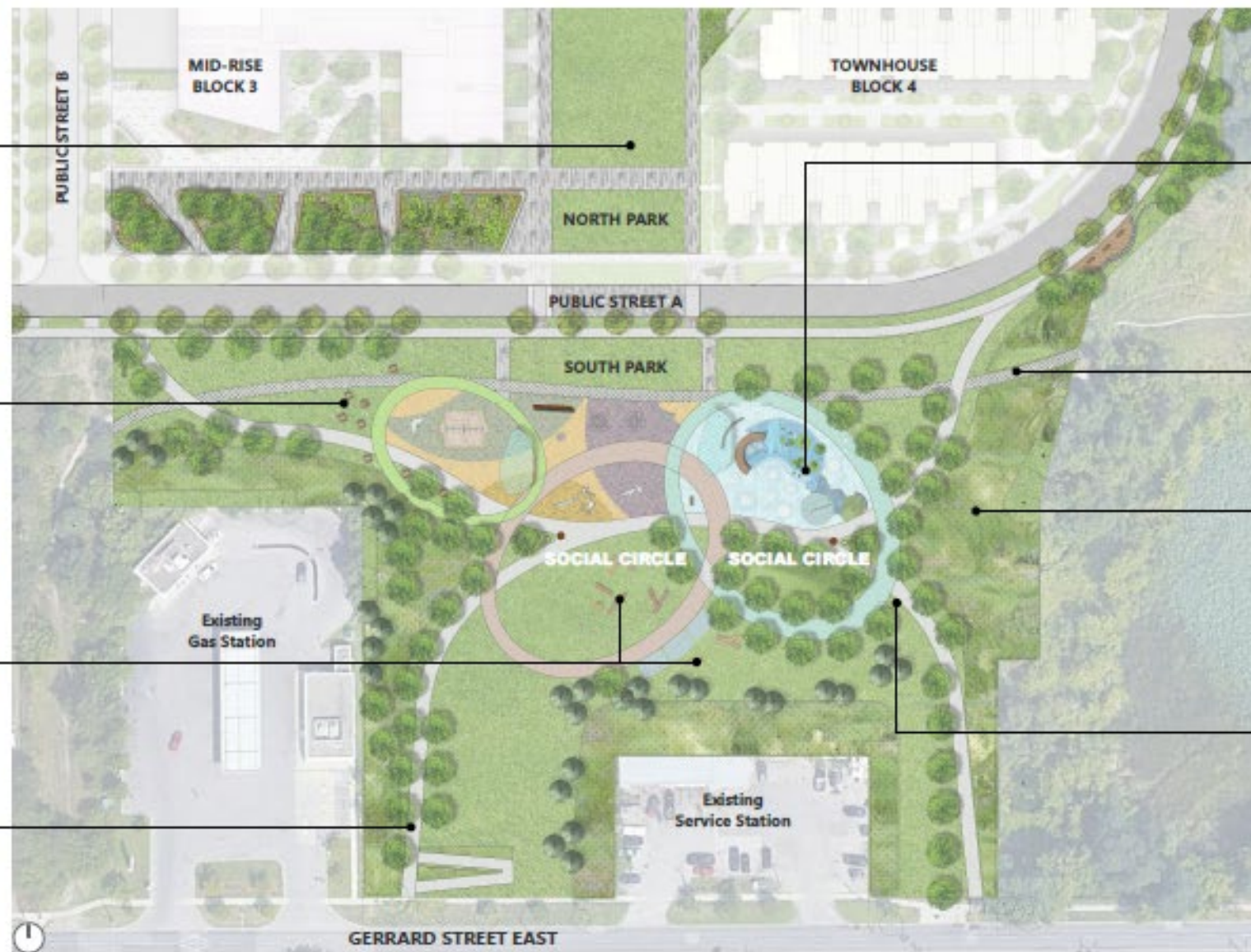
Picnic Areas



Log Play Area



Multi-Use Pathway



Splash Pad / Water Play



Turfstone Paving



Naturalized Buffer



Sculptural Light Fixtures



# Concept | Park Enlargement Precedent Images



Sculptural Play Features



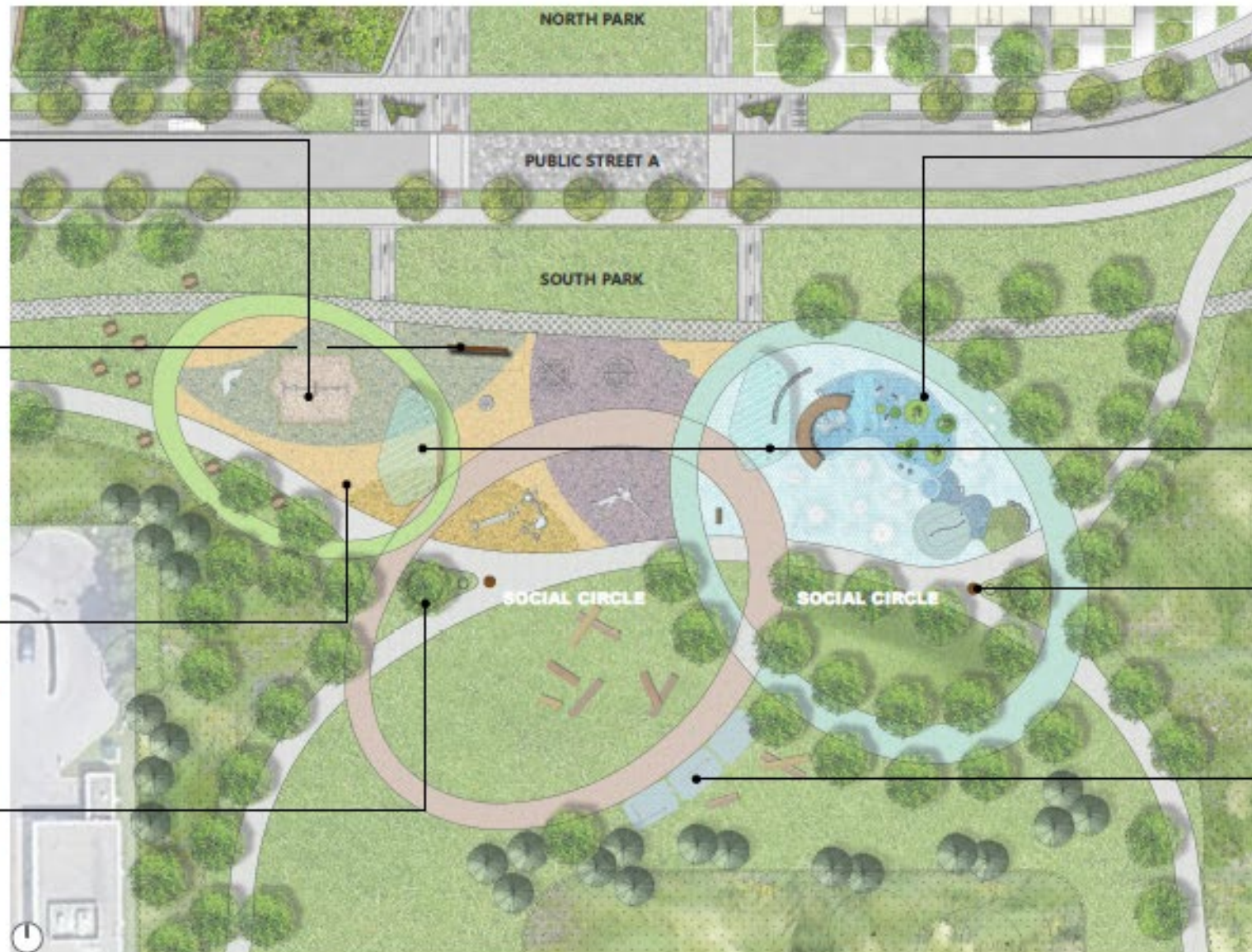
Interactive Feature Wall



Colourful Rubberized Play Surface



Circular Wood Bench



Animated Water Play Area



Sculptural Canopy Features



Tree Carvings



Outdoor Fitness Area



# Concept | Perspective - Looking West





# Concept | Perspective - Looking Southeast



## Next Steps

*how you can  
stay involved*

Visit the project webpage at  
[www.toronto.ca/411VictoriaPark](http://www.toronto.ca/411VictoriaPark)



Share your detailed feedback through the online survey available now to March 27, 2022



Access this presentation online and a consultation summary when available



Sign up for e-updates to receive all project updates