



PUBLIC
AND PRIVATELY
NOT ALLOWED
ON THIS SLOPE

PLEASE
KEEP TO THE
WALKS

The enclosures around the garbage and recycling bins throughout the park have been installed.



The concrete pathways in many areas of the park were installed in April and May.



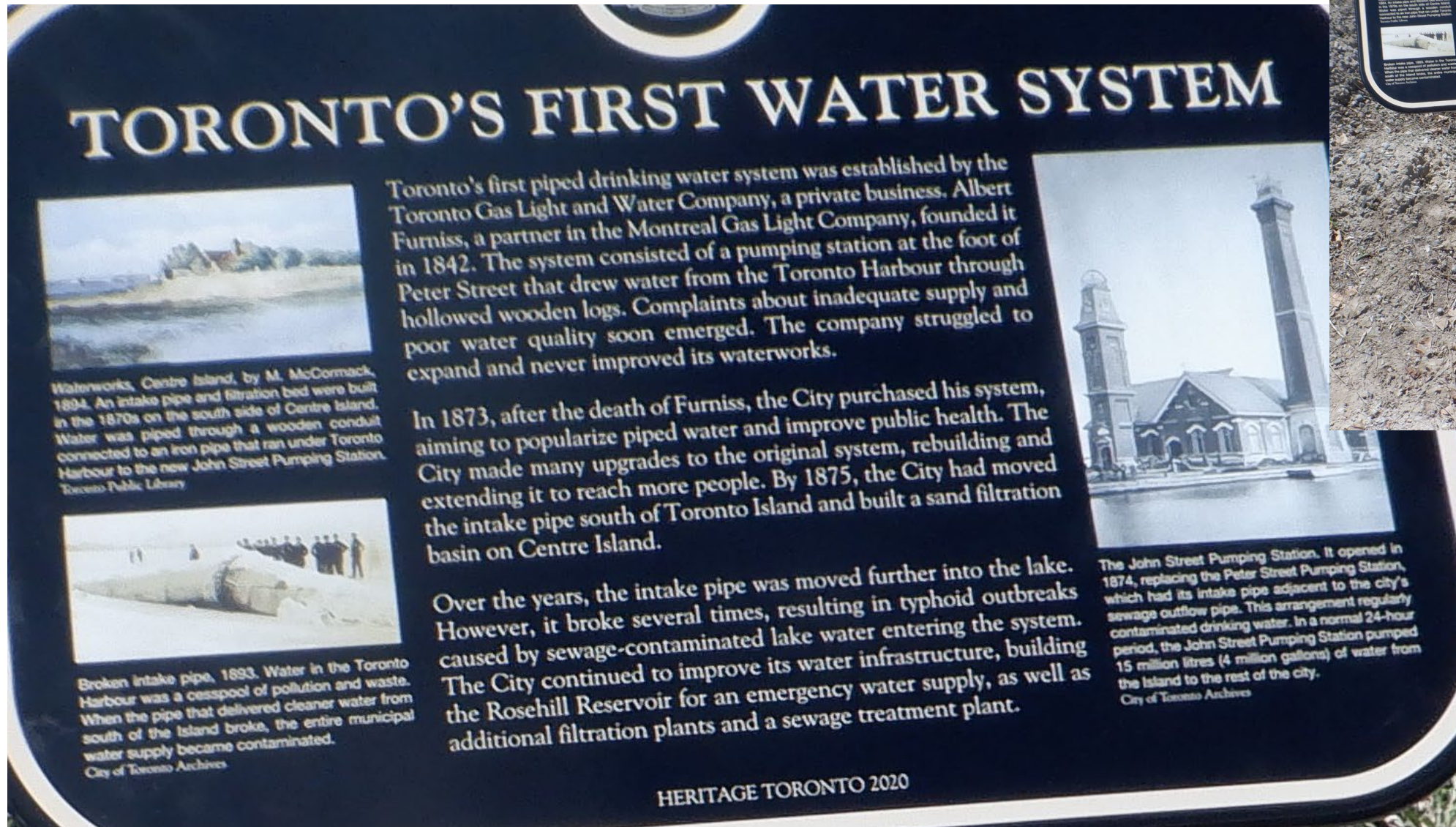


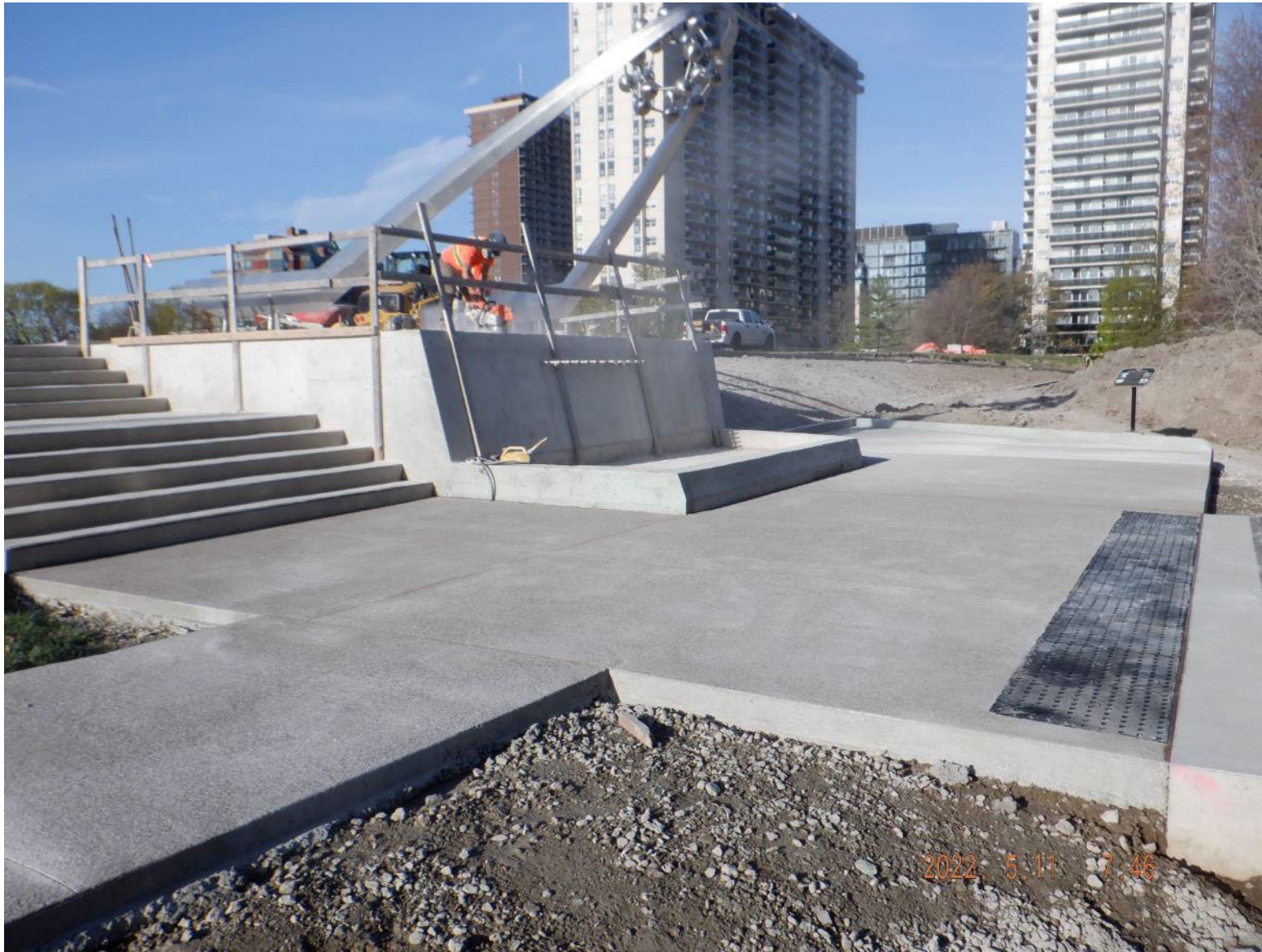
The new walkway from the playground up to the Washroom.

Grading the slope next to the accessible ramps
on Rosehill (northern section of the park).
New plantings will be installed.



Five (5) Heritage plaques about the City's drinking water systems and the Rosehill Reservoir have been installed in various park locations.





More concrete work around the centennial water feature/monument has been installed. The water feature connection system will be operational before the park opens.



One of the two original valves that was removed from Rosehill Reservoir was installed as a public art/heritage at the Avoca entrance node. (The second heritage valve is located in Little Park/Summerhill entrance.)



Some of the tree protection zones (TPZ) were removed. The grass will be inspected and any re-seeding that is needed may take place after the park is opened.



The swing set in the playground was rotated slightly away from the path, to create buffer space in between the swings and pedestrians.



The original benches (including memorial plaques) have been re-installed inside the Memorial Garden. New benches will be installed under the pergolas at the south end of the Memorial Garden (photo not shown).