



Maps: Existing & Planned Infrastructure in Midtown

Map 5. Existing Facilities & Infrastructure

Map 6. Existing Municipal Services

Map 7.a Planned Facilities & Infrastructure (2021-2051)

Map 7.b Near-term projects in Midtown (2021-2026)

Map 7.c Mid-term projects in Midtown (2027-2031)

Map 7.d Long-term projects in Midtown (2032-2051)

Map 7.e Midtown Projects subject to acquisition, development and future capital planning

Midtown
Infrastructure
Implementation
Strategy

Map 5. Existing Facilities
& Infrastructure

- Yonge-Eglinton Secondary Plan Area
- Community Facilities

Child Care

Human Services

Libraries

Recreation Facilities

TDSB Elementary

TDSB Secondary

TCDSB Elementary

TCDSB Secondary
- Parks and Open Spaces

Existing Parks

Ravines/ Natural Area

Cemetery
- Bikeways

Bike Lane

Signed Routes

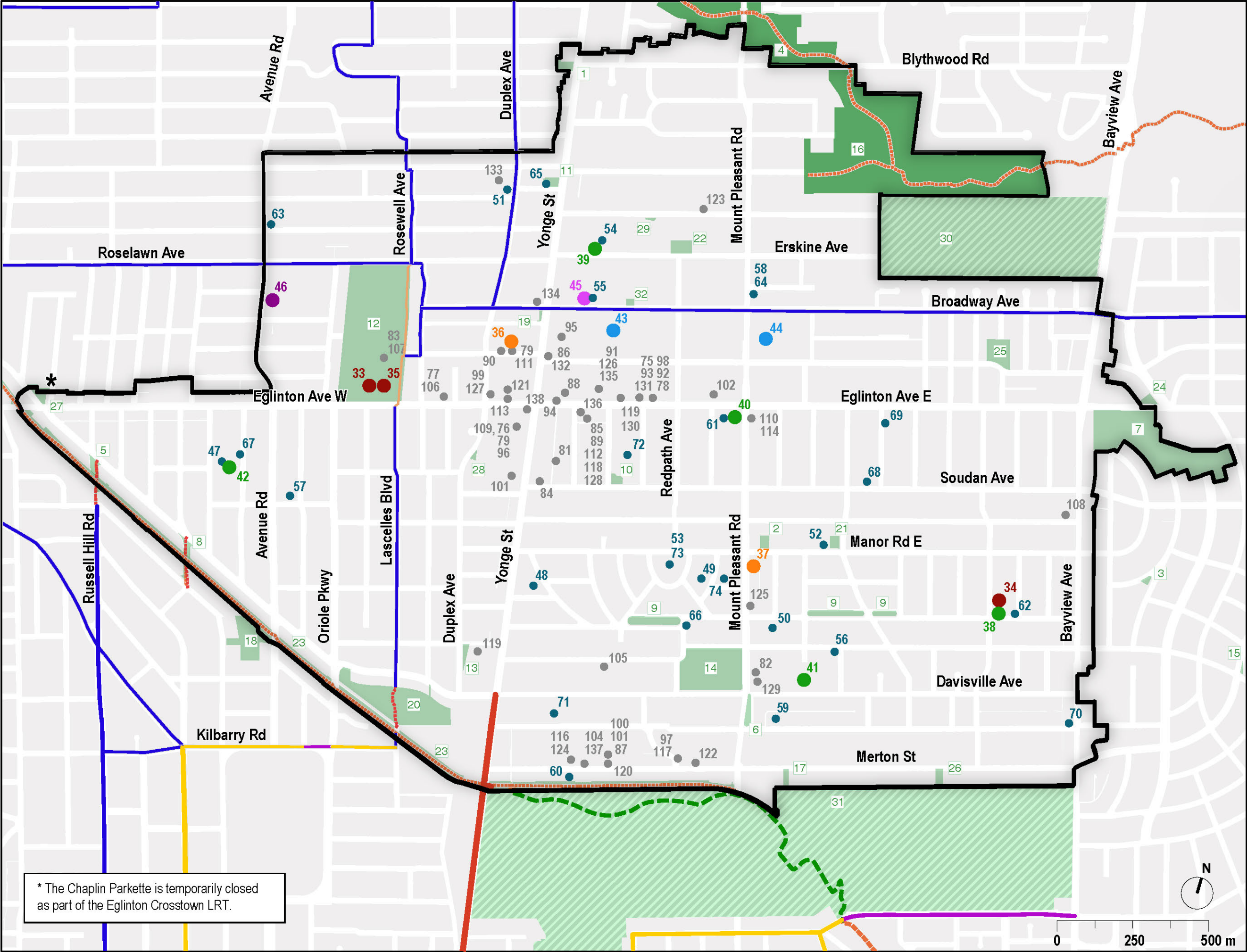
Sharrows Wayfinding

Multi-Use Trail

Multi-Use Trail Existing Connector

Park Road

ActiveTO Complete Street Pilot 2021-2022



* The Chaplin Parkette is temporarily closed as part of the Eglinton Crosstown LRT.



PARKS AND OPEN SPACES

- 1 Snider Parkette
- 2 Manor Community Green
- 3 Father Caulfield Park
- 4 Blythwood - Sherwood Ravine
- 5 Robert Bateman Parkette
- 6 Mount Pleasant Parkette
- 7 Howard Talbot Park
- 8 Larratt Parkette
- 9 Glebe Manor Square
- 10 Dunfield Park
- 11 St. Clements - Yonge Parkette
- 12 Eglinton Park
- 13 Fiona Nelson Parkette
- 14 June Rowlands Park
- 15 Trace Manes Park
- 16 Sherwood Park
- 17 The Mission Ground Parkette
- 18 Forest Hill Road Park
- 19 Montgomery Square Park
- 20 Oriole Park
- 21 Cudmore Creek Park
- 22 Redpath Avenue Parkette
- 23 Kay Gardner Beltline Park
- 24 Bessborough Parkette
- 25 Charlotte Maher Park
- 26 Pottery Playground
- 27 Chaplin Parkette
- 28 233 Duplex Ave
- 29 85 Keewatin Ave Park
- 30 Mount Hope Catholic Library
- 31 Mount Pleasant Cemetery
- 32 66 Broadway Ave

RECREATION FACILITIES

- 33 North Toronto Memorial Arena - Eglinton Park
- 34 Maurice Cody Community Centre
- 35 North Toronto Memorial Community Centre

LIBRARIES

- 36 Toronto Public Library - Northern District Branch
- 37 Toronto Public Library - Mount Pleasant Branch

TDSB ELEMENTARY

- 38 Maurice Cody Junior Public School
- 39 John Fisher Junior Public School
- 40 Eglinton Junior Public School
- 41 Hodgson Middle School
- 42 Oriole Park Junior Public School

TDSB SECONDARY

- 43 North Toronto Collegiate Institute
- 44 Northern Secondary School

TCDSB ELEMENTARY

- 45 St Monica Catholic Elementary School

TCDSB SECONDARY

- 46 Marshall McLuhan Catholic Secondary School

CHILDCARE

- 47 Treetop Children's Centre
- 48 Special Moments Child Care Centre
- 49 Manor Montessori School 2
- 50 Little Tots' Manor
- 51 St. Clement's Early Learning School
- 52 Monarch Manor
- 53 Manor Road Co-Operative Nursery School
- 54 French Connection
- 55 St. Monica's Satellite (Central Eglinton)
- 56 The Beez Kneez Millwood
- 57 Curious Caterpillars
- 58 Manor Montessori School 3
- 59 Little Tots' Manor 2
- 60 Tiny Explorers Academy
- 61 Central Eglinton Childrens' Centre
- 62 Maurice Cody Child Care
- 63 North Toronto Early Years Learning Centre-Avenue
- 64 Manor Montessori School
- 65 Upper Yonge Village Day Care Centre
- 66 Tiny Bumblebees Child Care Inc.
- 67 Children's Magic Moments Child Care And Nursery
- 68 Purple Tree Child Care Inc.
- 69 Curious Caterpillars - Petman Avenue
- 70 Abc Academy Bayview
- 71 Davisville Care Programme
- 72 Mothercraft Midtown Ced

- 73 Alphabet Academy
- 74 Mtt Davisville

HUMAN SERVICES

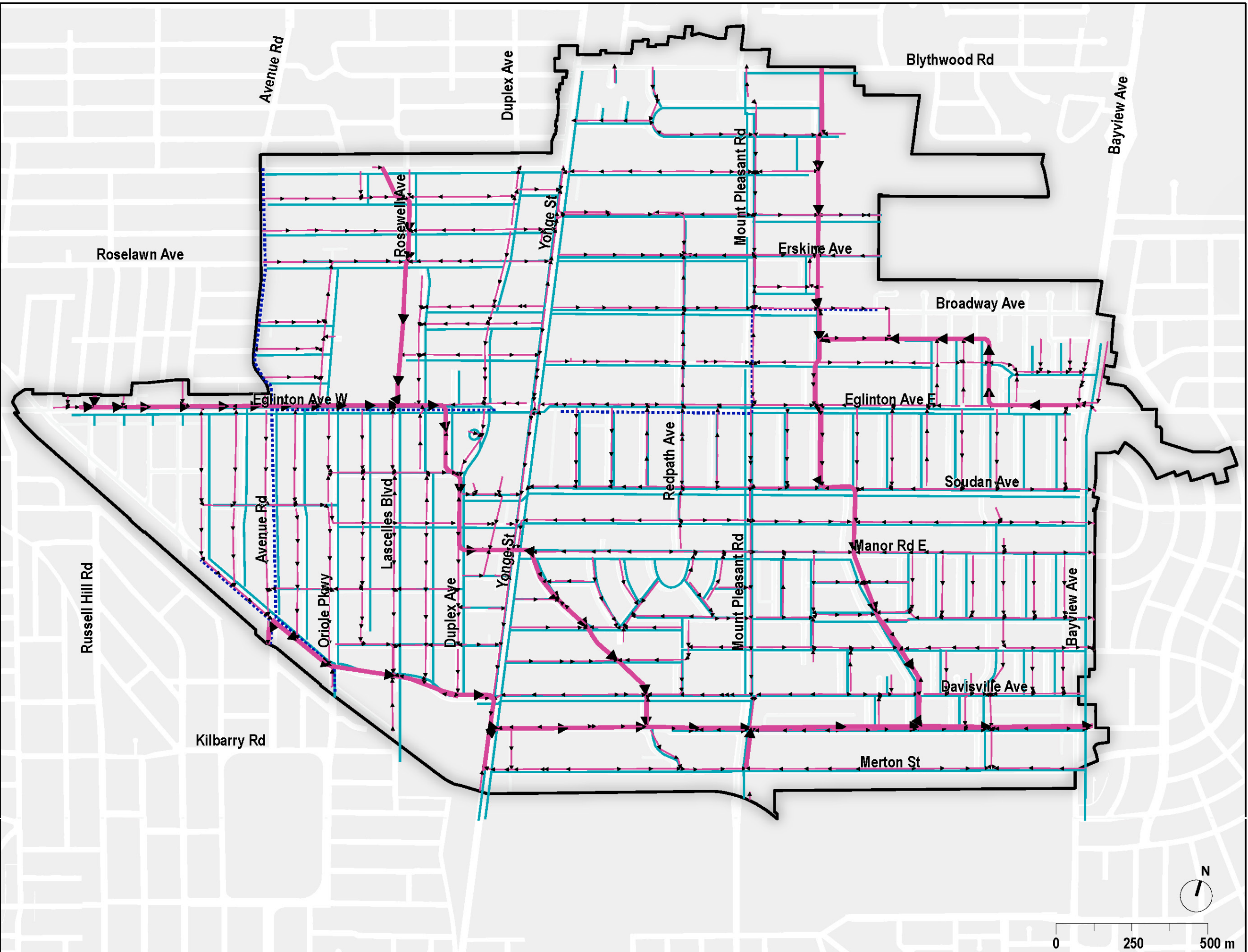
- 75 Parachute
- 76 YMCA of Greater Toronto, Career Planning and Development Centre
- 77 Centre of Learning & Development, Clear Language Centre
- 78 AIESEC Canada
- 79 Skylark Children, Youth and Families, YouthCan Impact
- 80 YMCA of Greater Toronto
- 81 Easter Seals Canada
- 82 Canadian Council on Rehabilitation and Work
- 83 Second Mile Club of Toronto, Orchard View Branch
- 84 VHA Home HealthCare
- 85 Hospice Toronto
- 86 Cystic Fibrosis Canada
- 87 Concerned Friends of Ontario Citizens in Care Facilities
- 88 Muscular Dystrophy Canada - Ontario Regional Office
- 89 Toronto Workforce Innovation Group
- 90 Addus - Head Office
- 91 Toronto Catholic District School Board, Eglinton Head office
- 92 Ontario Aboriginal HIV/AIDS Strategy
- 93 Toronto Community Employment Services
- 94 White Ribbon
- 95 Big Brothers Big Sisters of Toronto
- 96 YMCA of Greater Toronto, YMCA Youth Gambling Awards
- 97 BFO-Toronto
- 98 Central Eglinton Community Centre
- 99 Mood Disorders Association of Ontario
- 100 Toronto Council on Aging
- 101 TVO ILC
- 102 Alcoholics Anonymous, Greater Toronto Area Intergration Centre
- 103 SPRINT Senior Care
- 104 Asthma Society of Canada

- 105 Salvation Army, Isabel and Arthur Meighen Manor
- 106 OCASI
- 107 POINT
- 108 Morgentaler Clinic (The)
- 109 Outward Bound Canada. Charitable Programs
- 110 Boost Child & Youth Advocacy Centre
- 111 Skylark Children, Youth and Families, Head Office
- 112 Dying with Dignity Canada
- 113 Alzheimer Society of Toronto, First Link
- 114 Plan International Canada
- 115 AlphaPlus
- 116 Hope Air
- 117 Project Work
- 118 Hospice Toronto, Young Carers Program
- 119 Child Development Institute, Integra Program
- 120 Toronto Ride
- 121 Alzheimer Society of Toronto
- 122 Ewart Angus Homes, Ewart Angus SPRINT Home
- 123 Jewish Family and Child Services, Jerome D Diamond Centre
- 124 Geneva Centre for Autism
- 125 Junior League of Toronto
- 126 Canadian Civil Liberties Association
- 127 Adoption Council of Ontario
- 128 Academy of Computer and Employment Skills
- 129 Dr Jay Children's Grief Centre
- 130 Future Possibilities for Kids
- 131 Toronto. Employment and Social Services, Yonge Eglinton Centre
- 132 Career Edge Organization
- 133 Out of the Cold. Meal Programs, Anglican Church of St Clements
- 134 Vibrant Healthcare Alliance
- 135 Ontario Neurotrauma Foundation

Midtown
Infrastructure
Implementation
Strategy

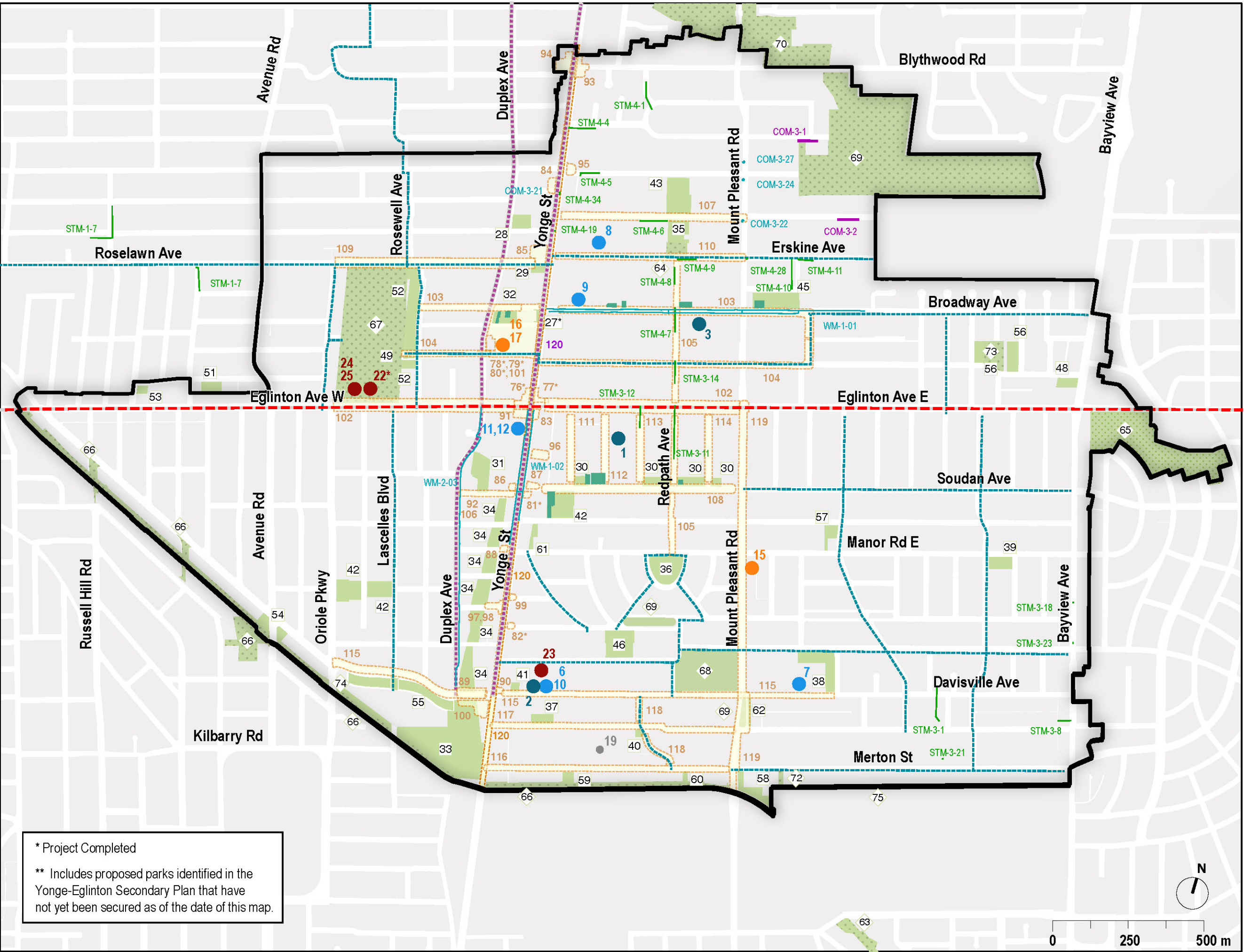
Map 6. Existing Municipal
Services

- Yonge-Eglinton Secondary Plan Area
- Watermains
- Distribution Mains (150mm - 750mm)
- Transmission Mains (300mm - 1200mm)
- Combined Sewers with Direction
of Flow
- Local Sewers (225mm - 1500mm dia.)
- Trunk Sewers (1200mm - 3300mm dia.)



Midtown
Infrastructure
Implementation
Strategy

Map 7-a. Planned Facilities
& Infrastructure (2021-2051)



* Project Completed
** Includes proposed parks identified in the Yonge-Eglinton Secondary Plan that have not yet been secured as of the date of this map.

Yonge-Eglinton Secondary Plan Area

Community Facilities

● Child Care

● Human Services

● Libraries

● Schools

● Recreation

Parks and Open Spaces

■ New Parks **

■ Secured Parks

■ Park Improvement

Municipal Servicing Projects

— Planned Watermain Projects

— Planned Combined Sewer Projects

— Planned Storm Sewer Projects

Public Realm Moves

Yonge Street Squares (76 -101)

Eglinton Green Line (102)

Park Street Loop (103 -104)

Redpath Revisited (105)

Midtown Greenways (106 -114)

Davisville Community Street (115)

Yonge Street Extensions (120)

Merton Promenade (116)

Balliol/Pailton Green Streets (117)

Pailton Crescent Connector (118)

Mount Pleasant Road Arboretum (119)

Transportation

— Priority Local Streets

— Bikeways (Underway- In Design / Construction)

— Bikeways (Study Planned 2022-2024)



CHILDCARE

- 1 45 Dunfield Avenue (44 Lillian St)
- 2 Davisville Junior PS
- 3 117-127 Broadway Avenue
- 4 New City Operated/Contracted Child Care Facilities
- 5 New Non-contracted Child Care Facilities

SCHOOLS

- 6 Davisville Jr PS (Replacement)
- 7 Hodgson Middle School (Classroom Addition)
- 8 John Fisher Jr PS (Program Change)
- 9 St. Monica's Catholic School
- 10 Davisville Jr PS (Classroom Additions)
- 11 Potential New School – Canada Square (TDSB)
- 12 Potential New School – Canada Square (TCDSB)
- 13 Various undefined projects to address pupil shortage (TDSB)
- 14 Various undefined projects to address pupil shortage (TCDSB)

LIBRARIES

- 15 Mount Pleasant Library (interior renovation)
- 16 Northern District Library (public realm improvements)
- 17 Northern District Library (interior renovation or relocation)
- 18 Mount Pleasant Library (relocation)

HUMAN SERVICES

- 19 Community space, 140 Merton Street
- 20 New and replacement human service space - through redevelopment (various locations TBD)
- 21 Central Eglinton Community Centre (relocation)

RECREATION FACILITIES

- 22* North Toronto Memorial Community Centre SOGR
- 23 Davisville Aquatic and Community Centre
- 24 North Toronto Memorial Arena SOGR
- 25 North Toronto Memorial Community Centre - Potential Renewal or Expansion
- 26 New mid-sized community recreation centre (location TBD)

NEW PARKS AND OPEN SPACES

- 27* Montgomery Square (2384 Yonge St)
- 28 TPA Lot - 20 Castlefield Avenue
- 29 New square at Roselawn
- 30 Soudan Priority Park Area
- 31 Canada Square Park
- 32 Montgomery/Helendale Parkette
- 33 Davisville Yard
- 34 TTC Trench
- 35 Redpath Parkette Expansion
- 36 Church of the Transfiguration (111 Manor Rd E)
- 37 Balliol Parkette (60 Balliol St)
- 38 Areas Adjacent to Hodgson Public School
- 39 Areas Adjacent to Maurice Cody Public School
- 40 Pailton Square (185 Balliol St)
- 41 New park, Davisville Civic Precinct
- 42 Chaplin Estates Local Park (Tranmer Ave)
- 43 Redpath Revisited Local Park
- 44 Hillsdale Local Park
- 45 Broadway Park
- 46 Davisville Local Park
- 47 Central medium-sized local park in southeast quadrant (location TBD)
- 48 New park Commons, Bayview and Eglinton
- 49 New parks associated with Park Street Loop
- 50 New parks associated with Davisville Community Street
- 51 TPA Lot - 83-97 Burnaby Boulevard
- 52 Eglinton Park Expansion
- 53 Area adjacent to 83-97 Burnaby Boulevard (11, 15, 17 Heddington Ave)
- 54 New Parks along Beltline at Avenue Rd
- 55 Oriole Park Expansion
- 56 Charlotte Maher Park Expansion
- 57 Cudmore Creek Park Expansion
- 58 New Park along Betlline at Mount Pleasant Rd
- 59 New park or mid-block connection on Merton - 1
- 60 New park or mid-block connection on Merton - 2
- 61 New park, east of Yonge between Hillsdale Ave and Manor Rd E

PARK IMPROVEMENTS

- 62 Mount Pleasant Parkette Expansion
- 63 Beltline Trail at Moore Ave Improvements
- 64 Redpath Avenue Parkette Improvements
- 65 Howard Talbot Park Revitalization and Management Plan
- 66 Beltline Trail
- 67 Eglinton Park Master Plan
- 68 June Rowlands Park System Improvements (June Rowlands Park, Mount Pleasant Parkette and Glebe Manor Square West)
- 69 Sherwood Park Revitalization
- 70 Alexander Muir Memorial Gardens - Lawrence Park Ravine - Blythwood-Sherwood Ravine System Access & Accessibility Improvements
- 71 Midtown Wayfinding Improvements
- 72 The Mission Ground Parkette Improvements
- 73 Charlotte Maher Park Improvements
- 74 Frobisher Ave Closure
- 75 Mount Pleasant Cemetery

PUBLIC REALM MOVES

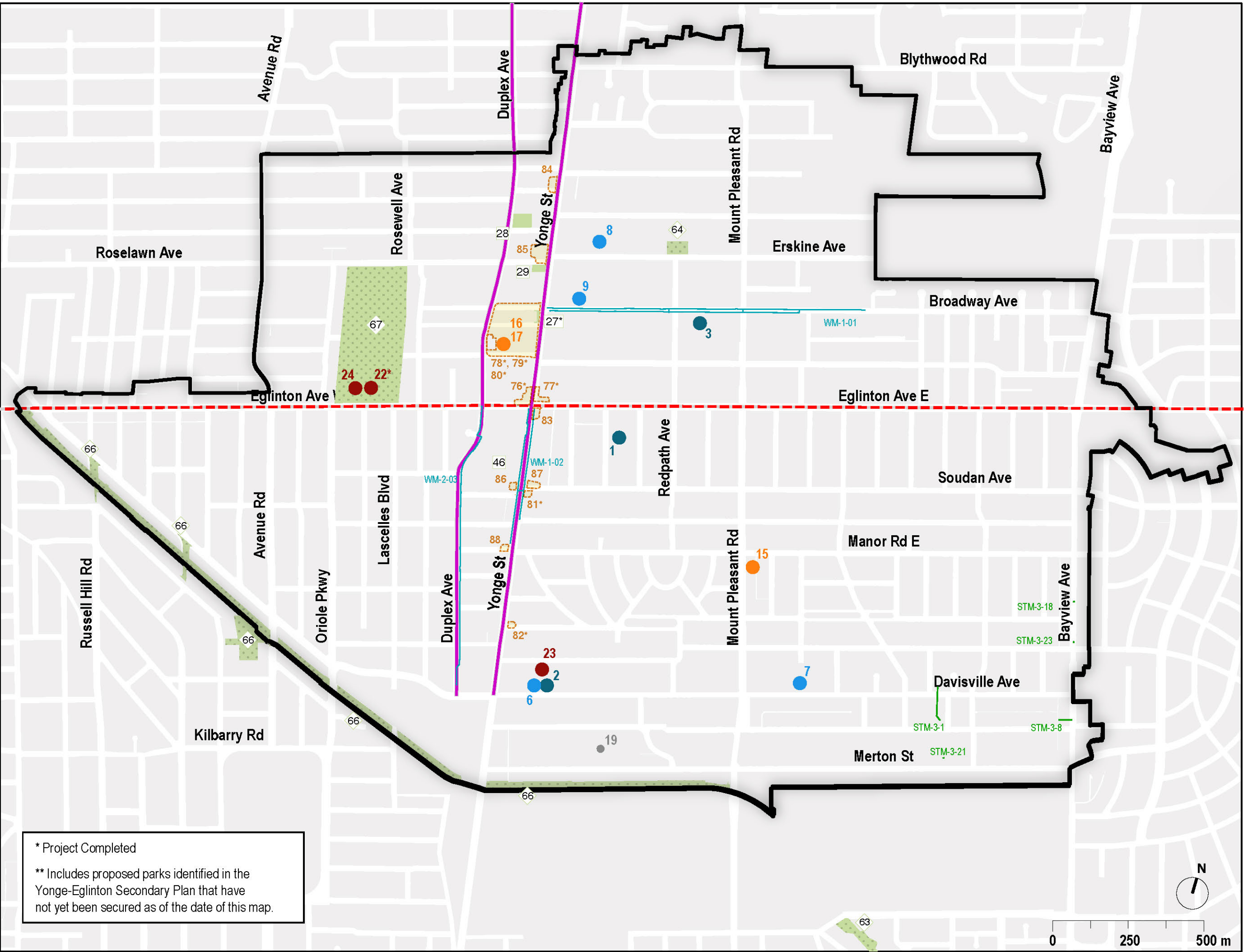
- Yonge Street Squares
 - 76* Yonge-Eglinton Crossroads Special Square north-west corner
 - 77* Yonge-Eglinton Crossroads Special Square north-east corner
 - 78-80* Montgomery Special Square
- 81* Soudan Ave Typical Square - south-east corner
- 82* Belsize Road Typical Square
- 83 Yonge-Eglinton Crossroads Special Square - south-east corner
- 84 St Clements Ave Typical Square
- 85 Roselawn Ave Typical Square
- 86 West block between Yonge Street and Berwick Ave
- 87 Soudan Ave Typical Square - north-east corner
- 88 Manor Road Integrated Square
- 89 Davisville Special Square - north-west corner
- 90 Davisville Special Square - north-east corner
- 91 Yonge-Eglinton Crossroads Special Square south-west corner

- 92 Berwick Ave Typical Square
- 93 Blythwood Road Typical Square
- 94 Lytton Blvd Typical Square
- 95 Sherwood Ave Typical Square
- 96 East block between Yonge Street and Berwick Ave
- 97 Glebe Road Typical Square
- 98 Glebe Road Shared Square
- 99 Belsize Road Typical Square
- 100 Davisville Special Square - south-west corner
- 101 Montgomery Special Square
- Eglinton Green Line
 - 102 Eglinton Green Line
- Park Street Loop
 - 103 Broadway Ave
 - 104 Roehampton Ave
- Redpath Revisited
 - 105 Redpath Revisited
- Midtown Greenways
 - 106 Berwick Greenway
 - 107 Keewatin Greenway
 - 108 Soudan Avenue
 - 109 Roselawn Greenway
 - 110 Erskine Greenway
 - 111 Holly Street
 - 112 Dunfield Avenue
 - 113 Lilian Street
 - 114 Brownlow Avenue
- Davisville Community Street
 - 115 Davisville Community Street
- Merton Street Promenade
 - 116 Merton Street Promenade
- Balliol Green Street
 - 117 Balliol Green Street
- Pailton Crescent Connector
 - 118 Pailton Crescent Connector

* Project Completed

Midtown
Infrastructure
Implementation
Strategy

Map 7-b. Near-term Projects
in Midtown (2021-2026)



* Project Completed

** Includes proposed parks identified in the
Yonge-Eglinton Secondary Plan that have
not yet been secured as of the date of this map.

Midtown
Infrastructure
Implementation
Strategy

Map 7c. Mid-term Projects in
Midtown (2027-2031)

Yonge-Eglinton Secondary Plan Area

Community Facilities

Schools

Parks and Open Spaces

New Parks **

Park Improvement

Municipal Servicing Projects

Planned Watermain Projects

Planned Combined Sewer Projects

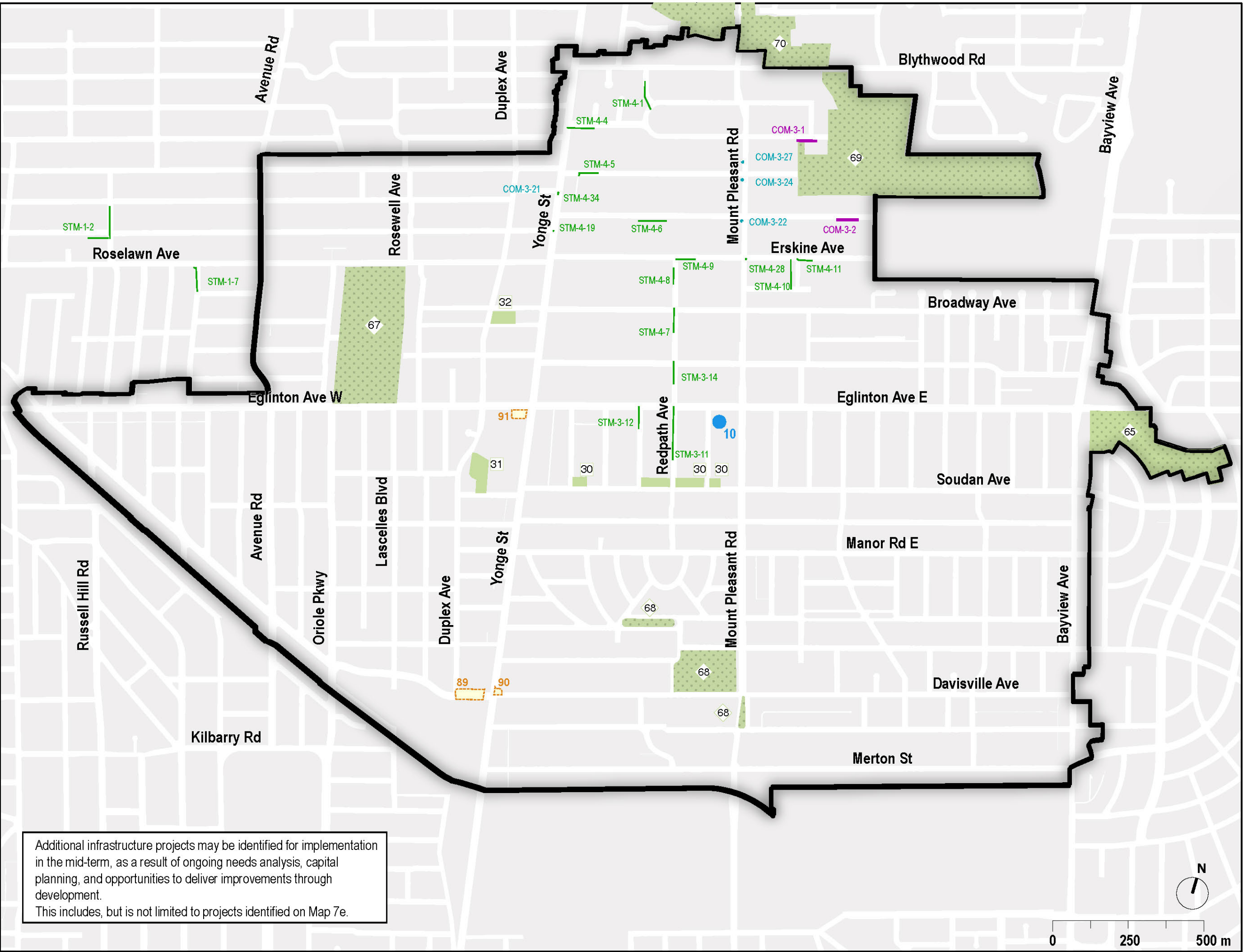
Planned Storm Sewer Projects

Public Realm Moves

Yonge Street (89 - 91)
Squares

Projects not shown on map,
location to be confirmed:

71 - Midtown Wayfinding Improvements



Additional infrastructure projects may be identified for implementation in the mid-term, as a result of ongoing needs analysis, capital planning, and opportunities to deliver improvements through development. This includes, but is not limited to projects identified on Map 7e.

Midtown
Infrastructure
Implementation
Strategy

Map 7d. Long-term Projects
in Midtown (2032-2051)

Yonge-Eglinton Secondary Plan Area

Community Facilities

Schools

Recreation

Parks and Open Spaces

New Parks *

Park Improvement

Public Realm Moves

Yonge Street Squares (92)

Midtown Greenways (106)

Mount Pleasant Road Arboretum (119)

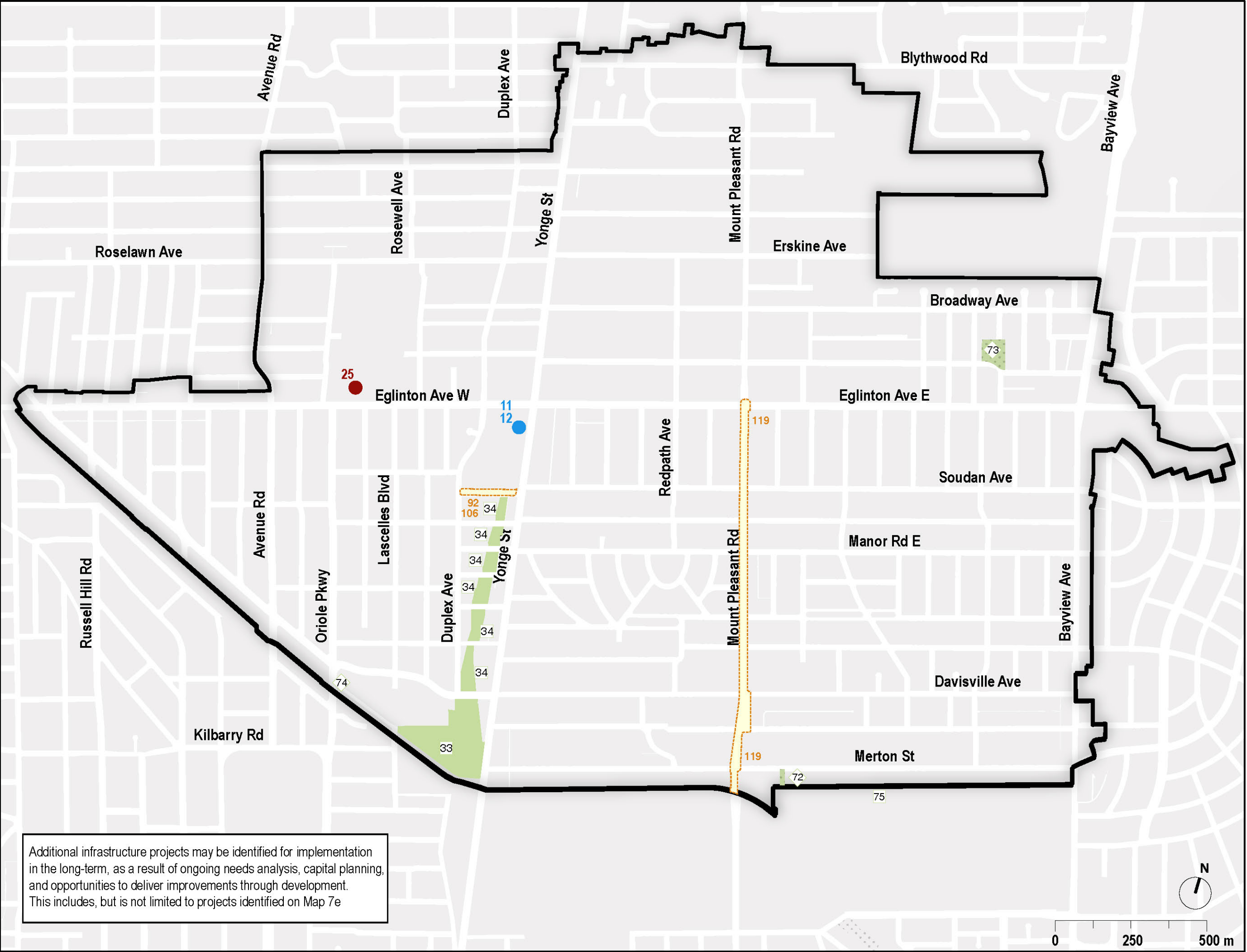
Projects not shown on map,
location to be confirmed:

13 - Various undefined projects to address pupil shortage (TDSB)

14 - Various undefined projects to address pupil shortage (TCDSB)

18 - Mount Pleasant Library (relocation)

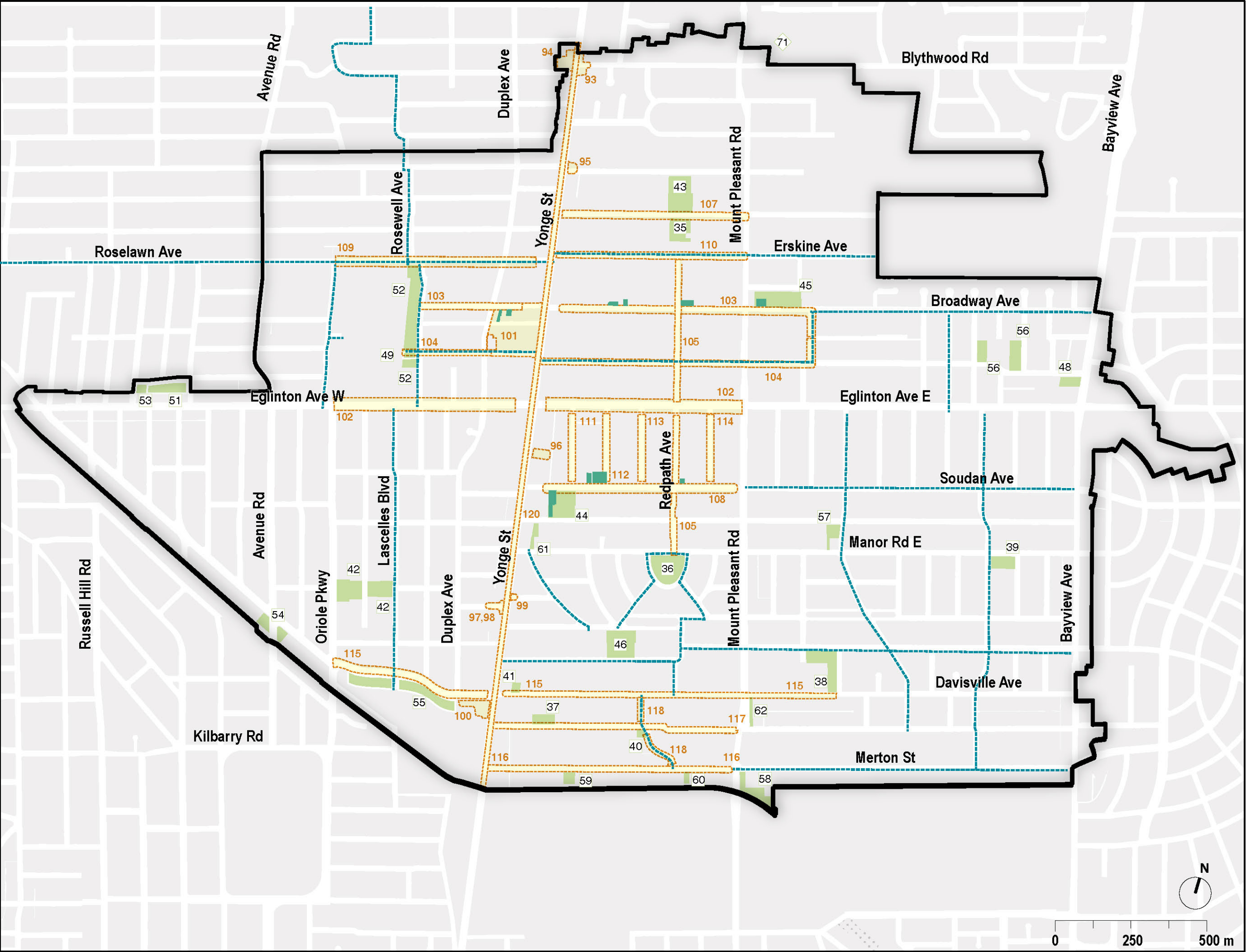
26 - New mid-sized community recreation centre (location TBD)



Additional infrastructure projects may be identified for implementation in the long-term, as a result of ongoing needs analysis, capital planning, and opportunities to deliver improvements through development. This includes, but is not limited to projects identified on Map 7e

Midtown Infrastructure Implementation Strategy

Map 7e. Midtown Projects
Subject to Acquisition,
Development and Future
Capital Planning



Yonge-Eglinton Secondary Plan Area

Parks and Open Spaces

x

New Parks *

Secured Parks

Public Realm Moves

Yonge Street Squares

(93 -101)

Davisville Community Street

(115)

Eglinton Green Line

(102)

Merton Promenade

(116)

Park Street Loop

(103 -104)

Balliol/Pailton Green Streets

(117)

Redpath Revisited

(105)

Pailton Crescent Connector

(118)

Midtown Greenways

(107 -114)

Yonge Street Extensions

(120)

Transportation

Priority Local Streets

Projects not shown on map, location to be confirmed:

4 - New City Operated/Contracted Child Care Facilities

5 - New Non-contracted Child Care Facilities

20 - New and replacement human service space - through redevelopment (various locations TBD)

21 - Central Eglinton Community Centre (relocation)

47 - Central medium-sized local park in southeast quadrant (location TBD)

50 - New parks associated with Davisville Community Street