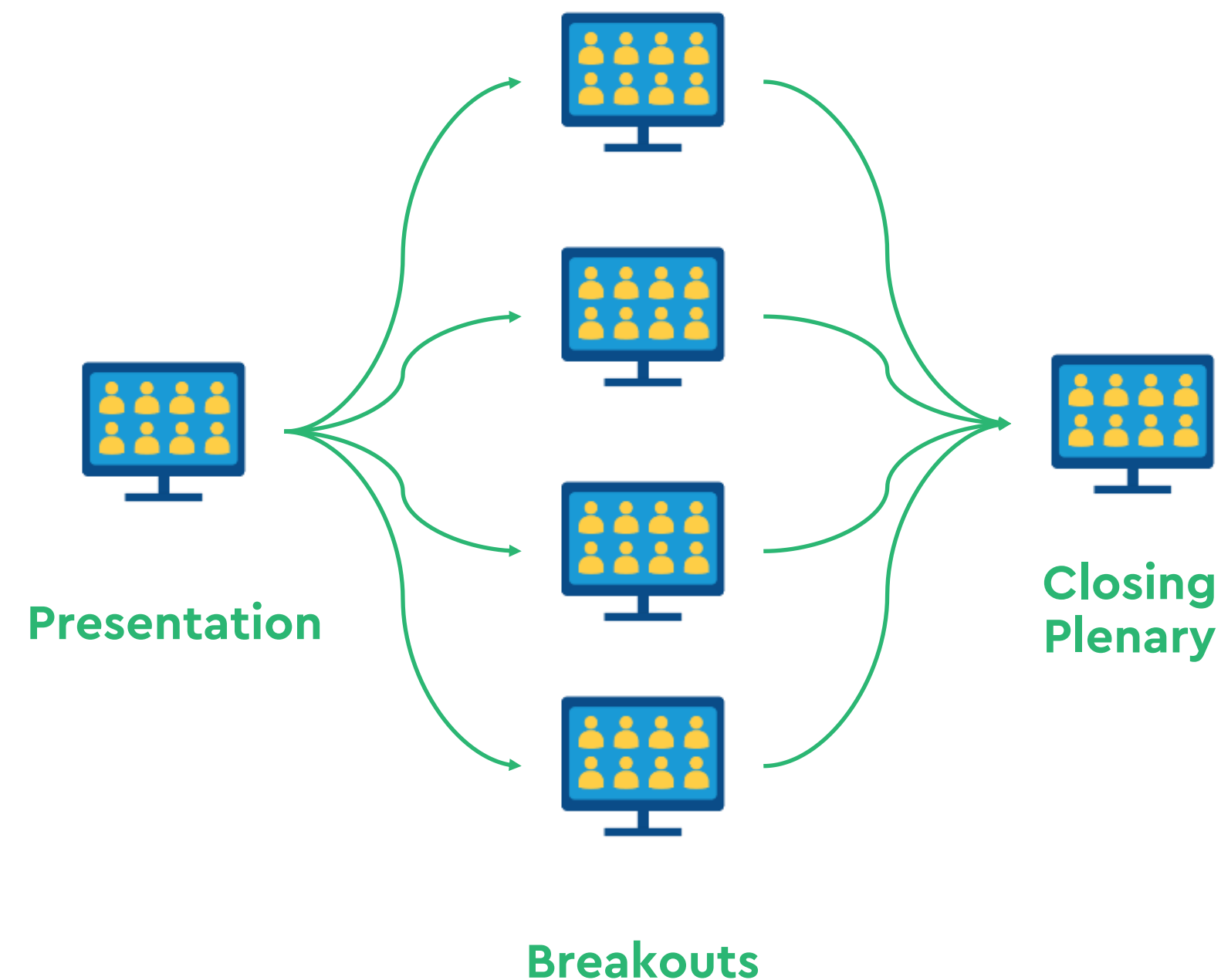




Deep Dive Workshop

Elevating Equity and Belonging

Agenda



6:00 Welcome, land acknowledgement, agenda review

6:15 Overview: Elevating Equity and Belonging

Questions of clarification

6:45 Discussion in breakout rooms

7:45 Report back and plenary discussion

7:55 Wrap up and next steps

8:00 Adjourn



Land Acknowledgment



Team Introductions

House Keeping



All Participants are muted upon entry.

This ensures that we are not getting feedback and that multiple people don't talk at the same time.



Raise (and lower) hand.

If you'd like to talk to a member of the project team, simply raise your hand and the facilitator will unmute you. Don't forget to lower it when you're done.



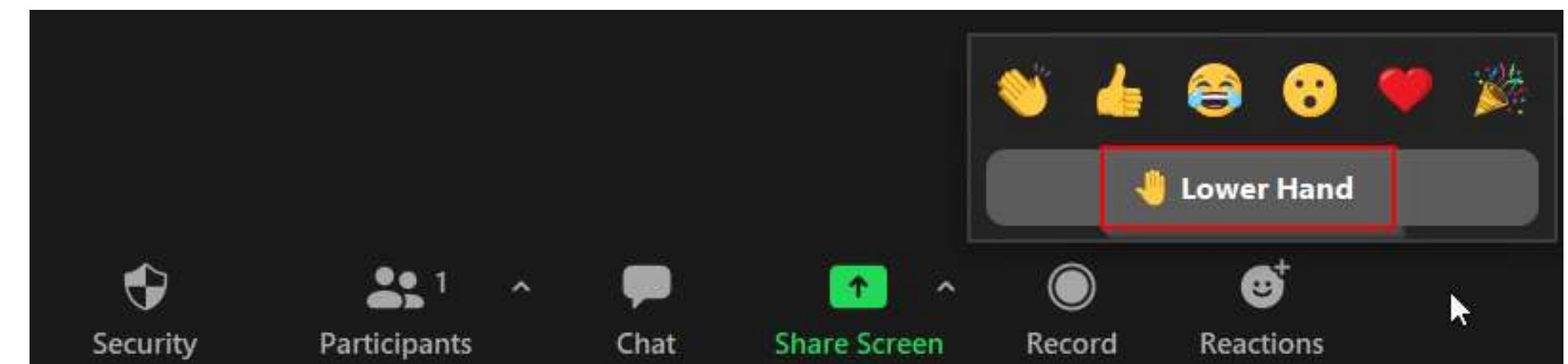
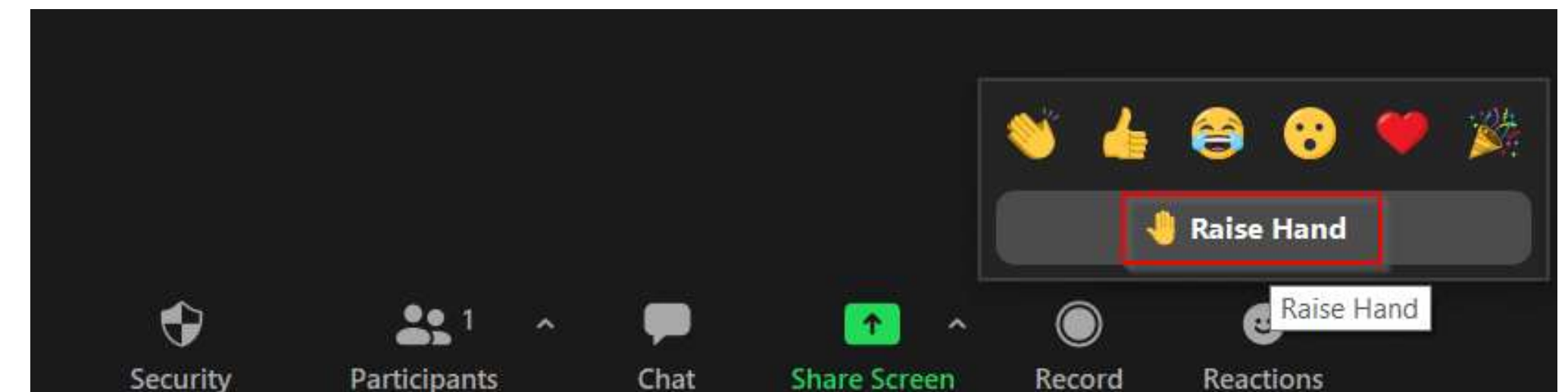
Use the chat.

The chat will be open for you to chat with participants. Keep in mind the facilitator might not catch all comments that go by.



Use reactions!

Virtual events can feel so impersonal. Feel free to use any of the emojis available to communicate with the project team and all participants.



On your
phone



Press *9 to raise hand



Press *6 to unmute

Engagement by the Numbers

1,268+



Synchronous Engagement

(number of people who attended "in person" events)

12,632+



Digital Tools

(Number of people who responded to surveys and digital engagement tools)



Over 4.3 Million

Social Media Reach

(unique IP addresses that saw our social media posts)

Indigenous Engagement by the Numbers

Pre-Engagement Meetings

First Nations
Indigenous-serving agencies
2-Spirit Peoples
Indigenous Youth
Indigenous Women

Phase 1 Meetings

Meetings with First Nations
Indigenous Placemaking Advisory Circle
Indigenous Community Sharing Meeting
2-Spirit Peoples Focus Group
Indigenous Women Focus Group
Indigenous Youth Focus Group



15 Meetings
(87 Attendees)

1
Ceremony

(315 attendees and viewers)

1
**Placekeeping
Forum**

(432 attendees and viewers)

Join Us – [Toronto.ca/IslandMasterPlan](https://toronto.ca/IslandMasterPlan)



Elevating Equity and Belonging Deep Dive

March 24, 2022
6 p.m. – 8 p.m



Enhancing Visitor Experience
Deep Dive
March 3, 2022
6 p.m. to 8 p.m.



Supporting a Dynamic Environment
Deep Dive
March 7, 2022
6 p.m. to 8 p.m.



Improving Access and Connection
Deep Dive
March 10, 2022
6 p.m. – 8 p.m.



Indigenous Sharing Meeting
Mar 9, 2022
6:30 p.m. to 8:30 p.m.



**Demonstration
Plan Survey**
March 7 – 25 2022

Important Links

Web Page: <https://toronto.ca/IslandMasterPlan>

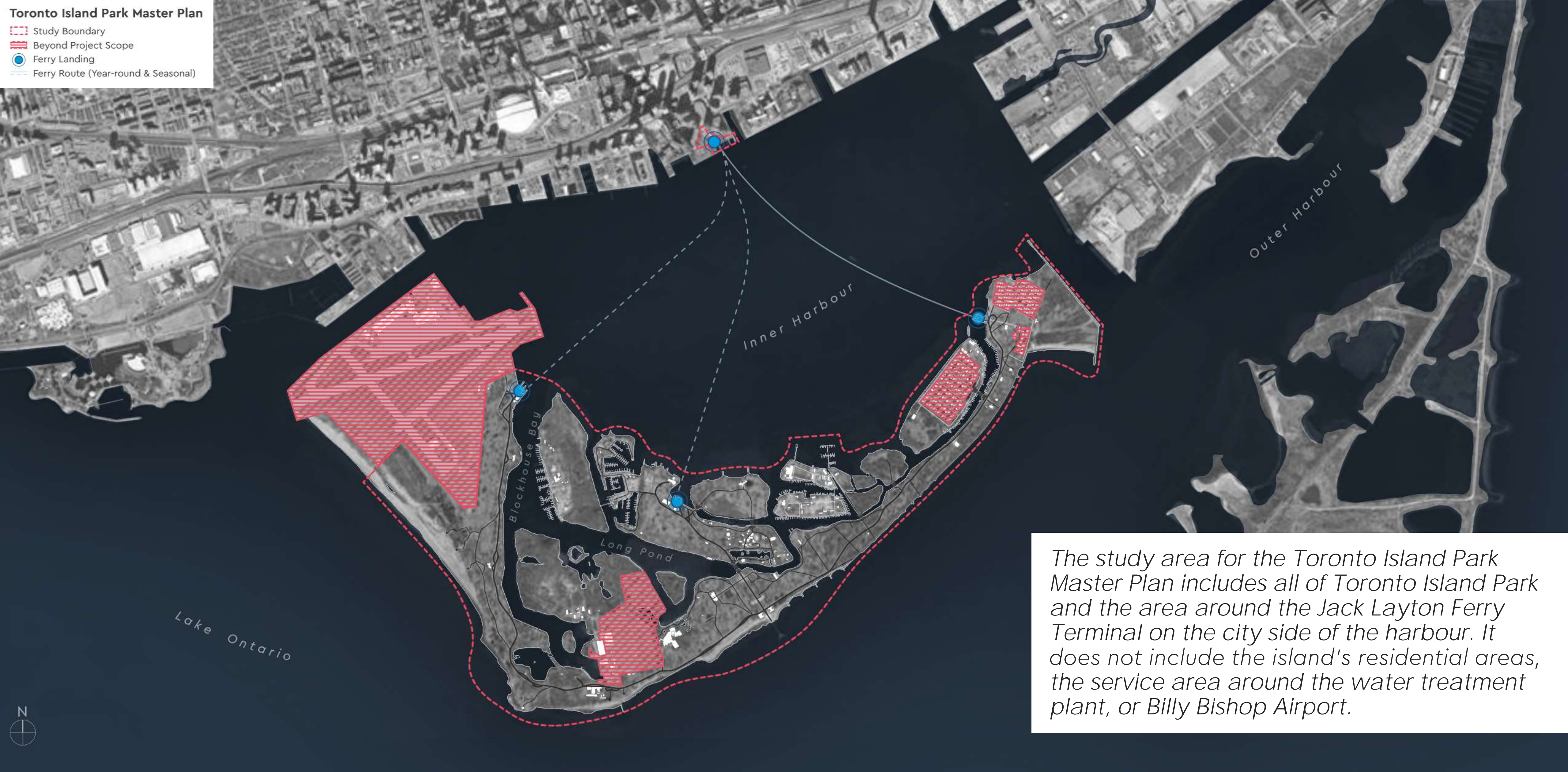
Island Stories: <https://toronto.ca/IslandStories>

Social Pinpoint: <https://toronto.mysocialpinpoint.ca/toronto-island-park-wayfinding-map>

Survey: <https://s.cotsurvey.chkmkt.com/IslandDemonstrationPlan>



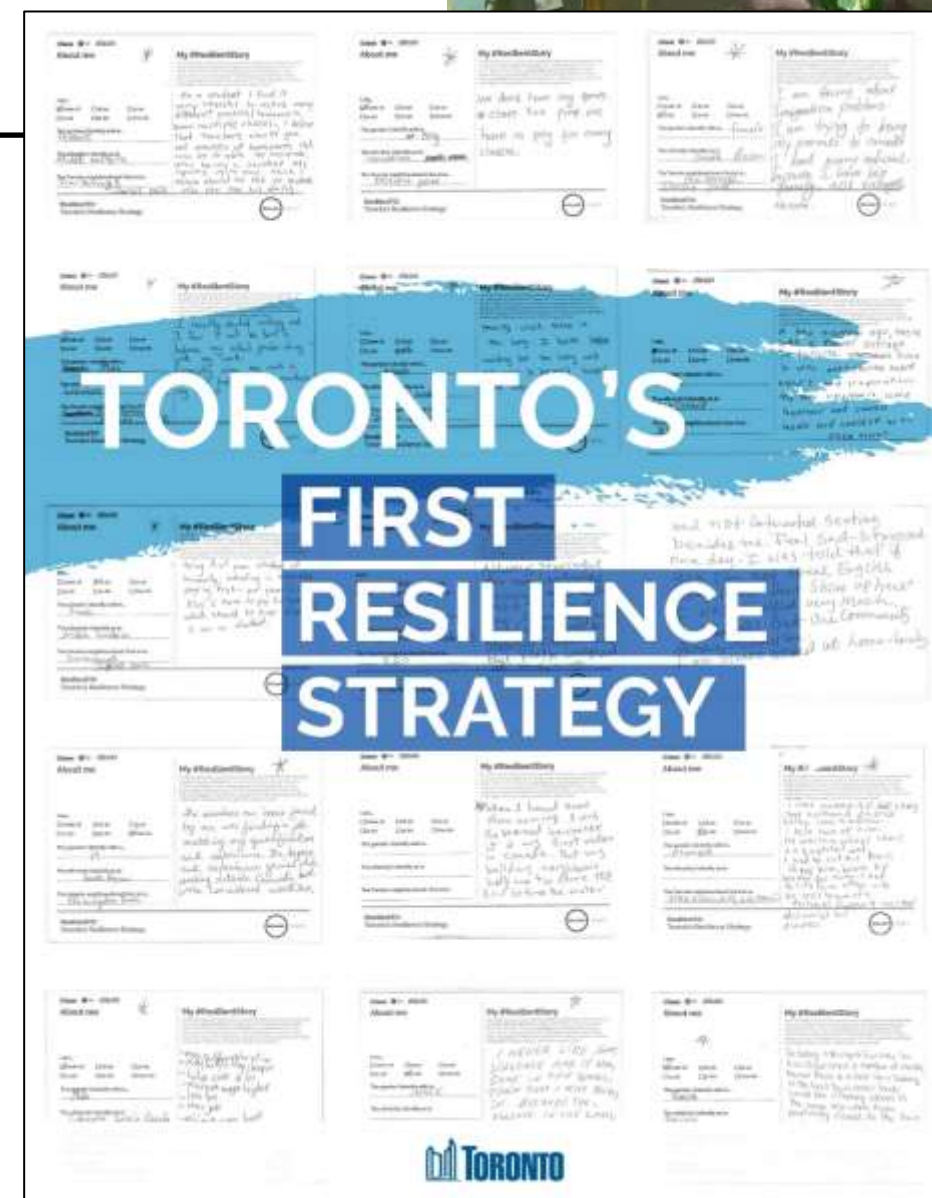
Overview



Toronto Island Park Study Area

Guiding Strategies

Down- town Parks and Public Realm Plan



City-wide Policy & Initiatives:

Official Plan

Parkland Strategy

Parks & Recreation Facilities Master Plan

Toronto's First Resilience Strategy

Toronto Biodiversity Strategy

Public Art Strategy

Toronto Parks and Trails Wayfinding Strategy

Downtown-specific Policy & Initiatives:

TOCore: Downtown Parks & Public Realm Plan

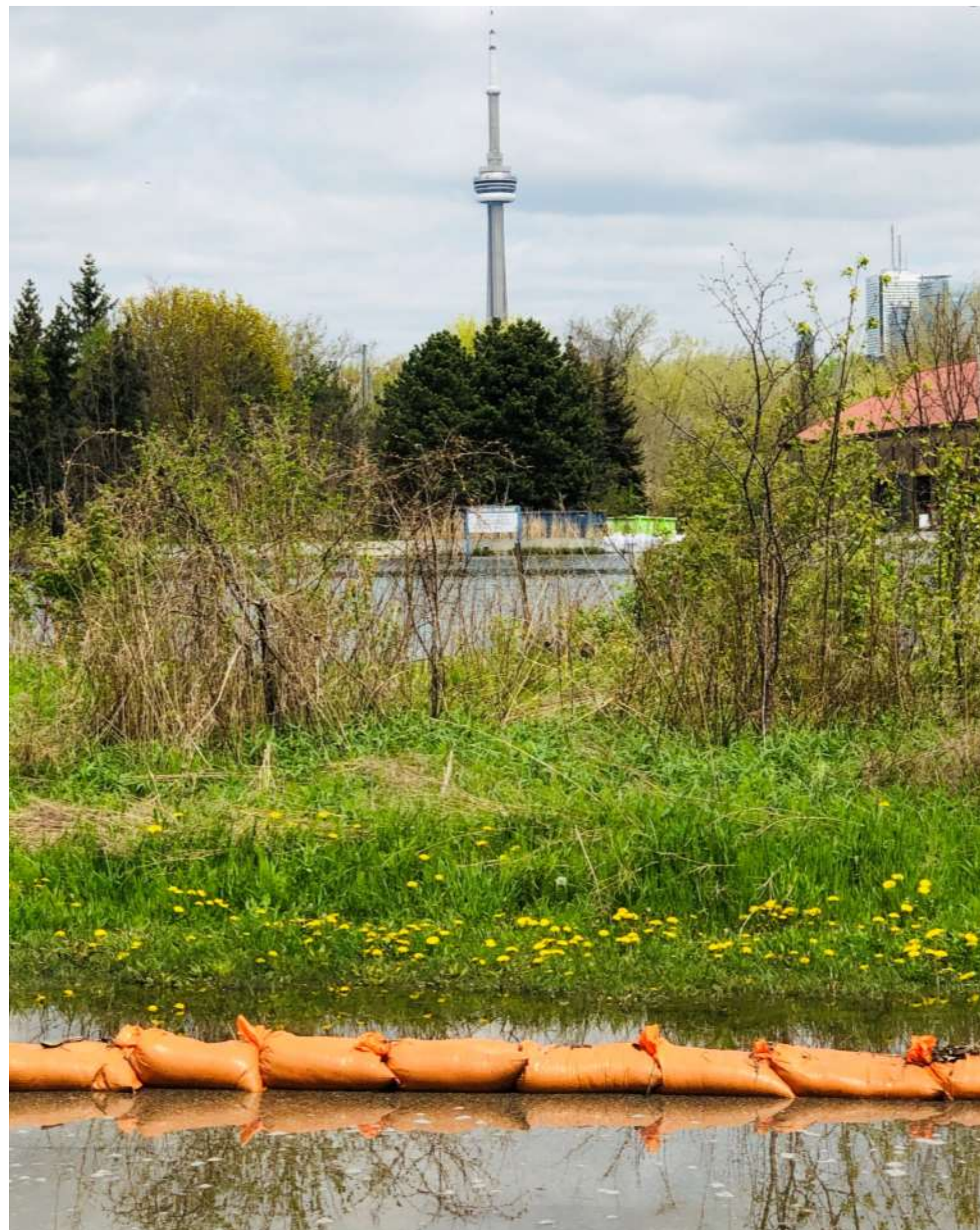
Central Waterfront Secondary Plan

Waterfront Toronto Resilience Strategy

Waterfront Toronto Marine Use Strategy

Billy Bishop Airport Master Plan Update

Parallel Studies



City of Toronto-led:

Toronto Island Park Business Strategy

Toronto Island Cultural Heritage Resource Assessment

Toronto Island Public Life Study

Island Stories

Ferry Fleet Replacement Strategy

Jack Layton Ferry Terminal Revitalization (with WT)

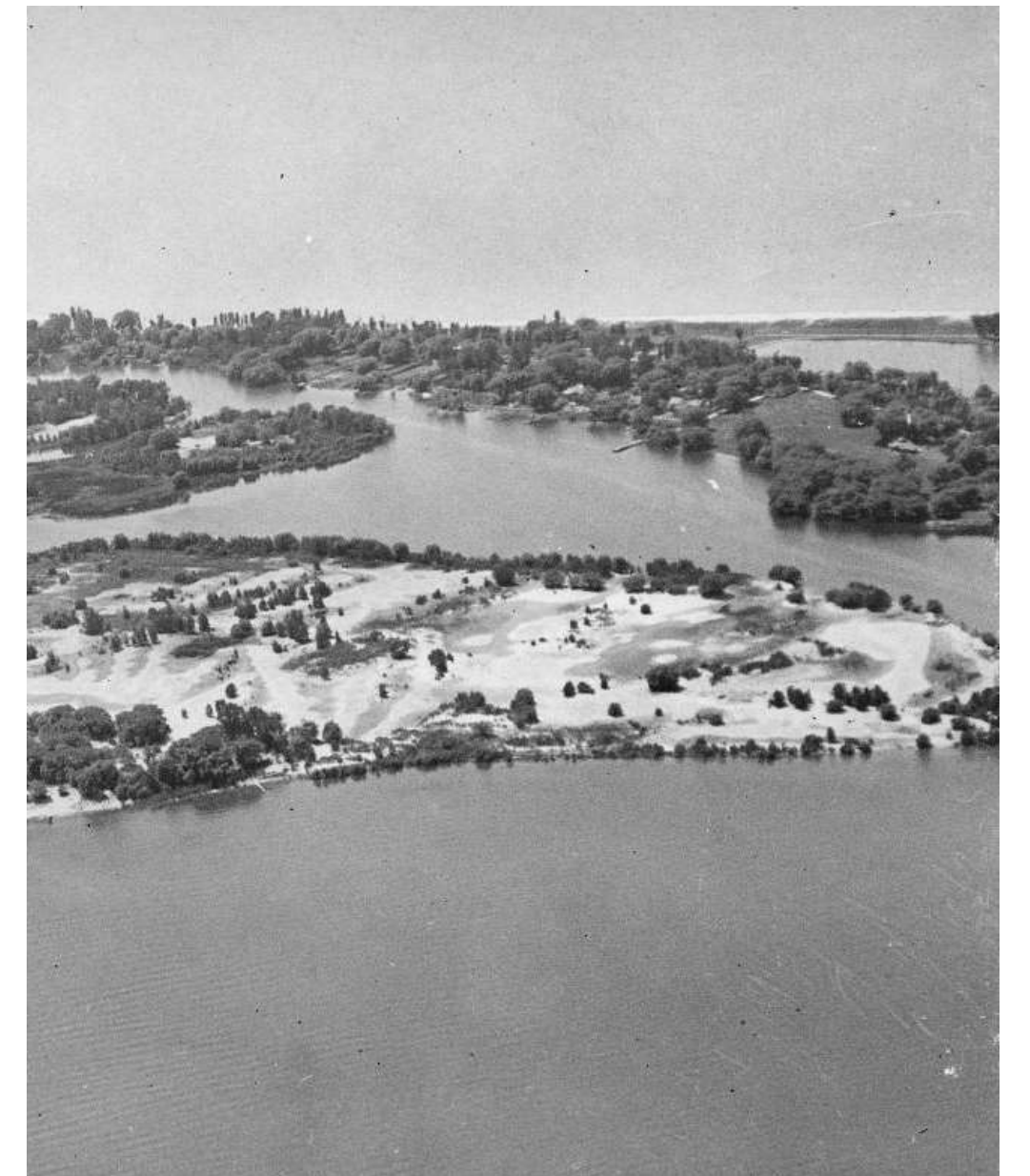
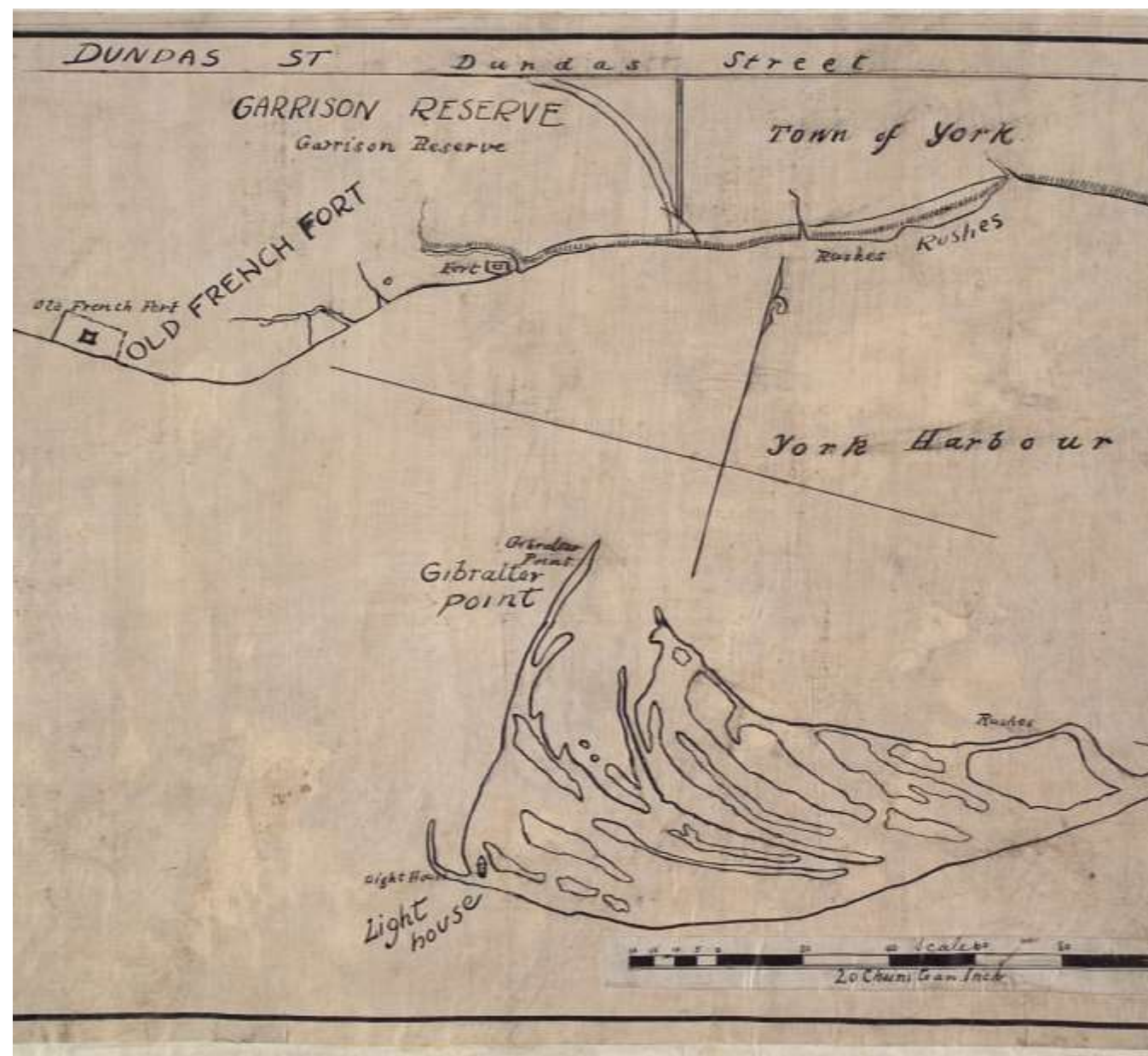
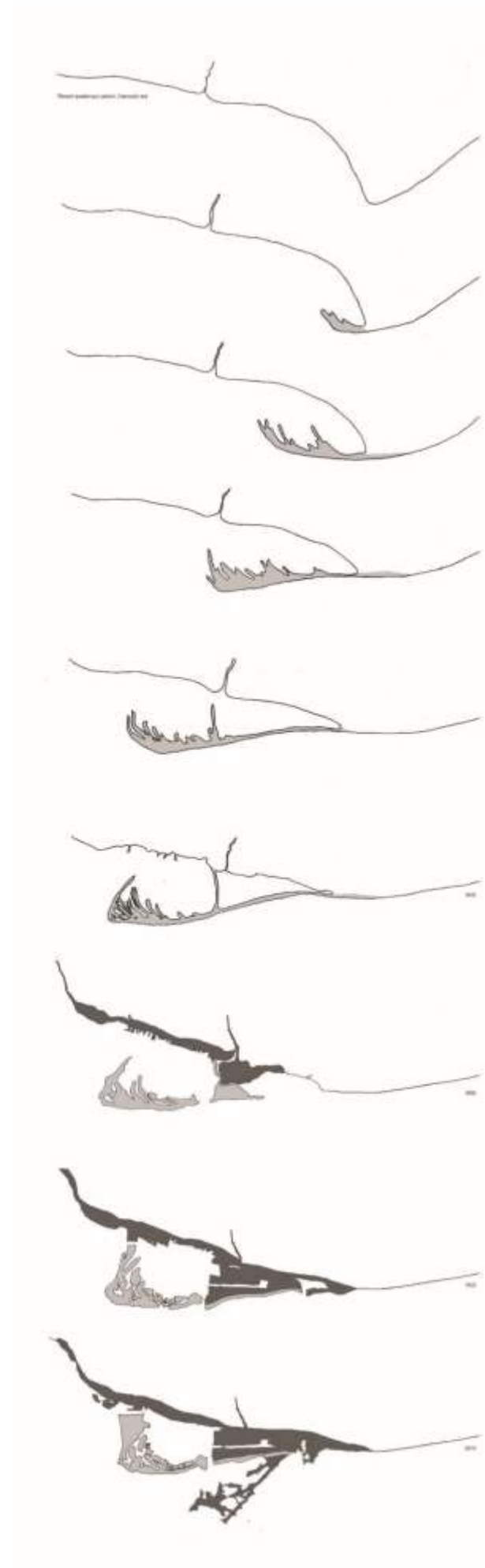
TRCA-led:

Gibraltar Point Erosion Control Project

Toronto Island Park Flood and Erosion Mitigation EA

Class I Archaeological Assessment

Understand how the Island formed



Understand the Island's past



... and the hidden stories

What We Heard: Accessibility



Accessibility

Hanlan's Beach
Youth

Towards Belonging Forum
Pre-Engagement

- Develop an accessibility policy specific to the Island.
- Information about the Island such as history, Indigenous history/Indigenous significance, information boards and wayfinding should exist both online and in physical form at the Island.
- Provide staff support for people experiencing disabilities.
- Pathways, trails and boardwalks that branch from the main roads should be accessible.
- Implement a transportation system for traveling across the Island.
- Wheelchair access to the beaches and into the water.

What We Heard: Hanlan's Beach



Accessibility
Hanlan's Beach
Youth

Towards Belonging Forum
Pre-Engagement

- Fix **fencing** around **ESAs**.
- Increase **plant coverage** near the beach.
- ♥ Include **lifeguards** at Hanlan's.
- ♥ Keep **motorized vessels away** from the beach.
- ♥ Provide better **maintenance/grooming** for the beaches.
- ♥ Address **crowding**.
- ♥ Concerns regarding **homophobic attacks and ideas for addressing them:**
 - Better transportation options across the Island
 - Expand clothing optional area.
 - Work with service providers and/or create Island Ambassadors.
 - Include cultural markers that communicate the history of the beach.

What We Heard: Youth



Accessibility
Hanlan's Beach
Youth
Towards Belonging Forum
Pre-Engagement

- Youth oriented information.
- Opportunities for youth to learn about the ecosystems and participate in stewardship efforts.
- Ensure that youth that live outside of downtown are aware of the different things the Island has to offer.
- Overnight camping opportunities.
- Youth-focused events.
- Youth pricing for activities, food and transportation.
- Partner with schools, after school programs and libraries to program field trips.
- Include a prayer space in the Island.
- Address safety concerns: homophobic attack, potential of getting stranded and missing the ferry, getting lost, etc.

What We Heard: Towards Belonging Forum

Accessibility
Hanlan's Beach
Youth
**Towards Belonging
Forum**
Pre-Engagement

- Make **information** about the Island, and how to enjoy it, **accessible to equity-deprived communities**.
- Include **BIPOC** folks in **communications** materials.
- **Address** safety concerns and **racial profiling**.
- Ensure that **staff reflects** Toronto's **diverse communities**.
- **Partner and fund** organizations and community groups that are bringing **BIPOC** folks into nature.
- Make the **ferry landing** at Hanlan's safer. Ensure that it is **better lit**, that there are **cultural markers** that make it clear that people are **entering an LGBTQ2s+**
- Remove gendered washrooms, **make all washrooms universal**.
- Clearly communicate **what is accessible** to the public and **what is private**.

What We Heard: Pre-Engagement



Accessibility
Hanlan's Beach
Youth

Towards Belonging Forum

Pre-Engagement

- Create spaces for cookouts.
- Create opportunities for growing food.
- Include infrastructure and amenities that are geared towards communities of colour.

Promote protection and value of natural areas



Identify opportunities in existing built heritage

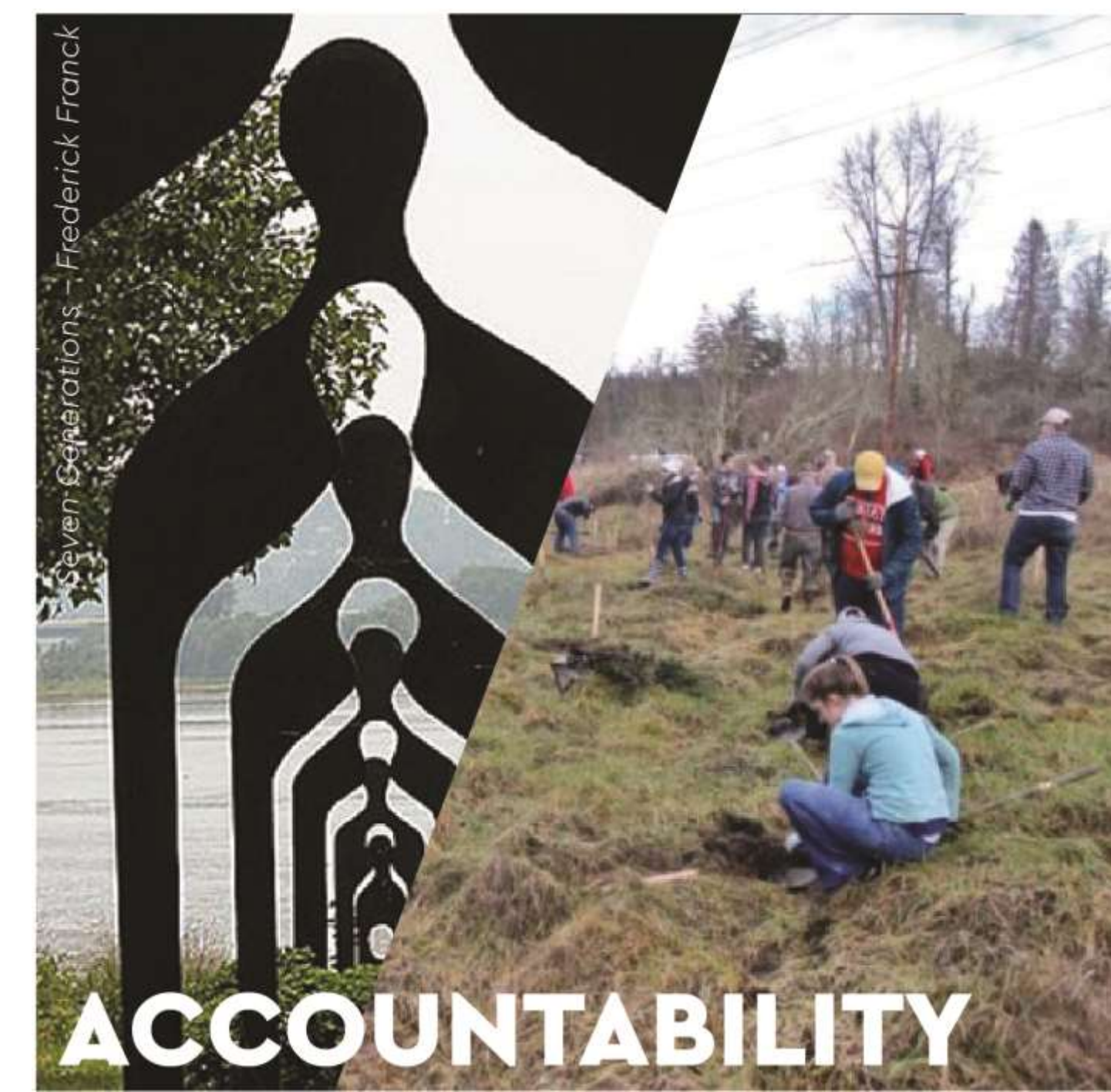
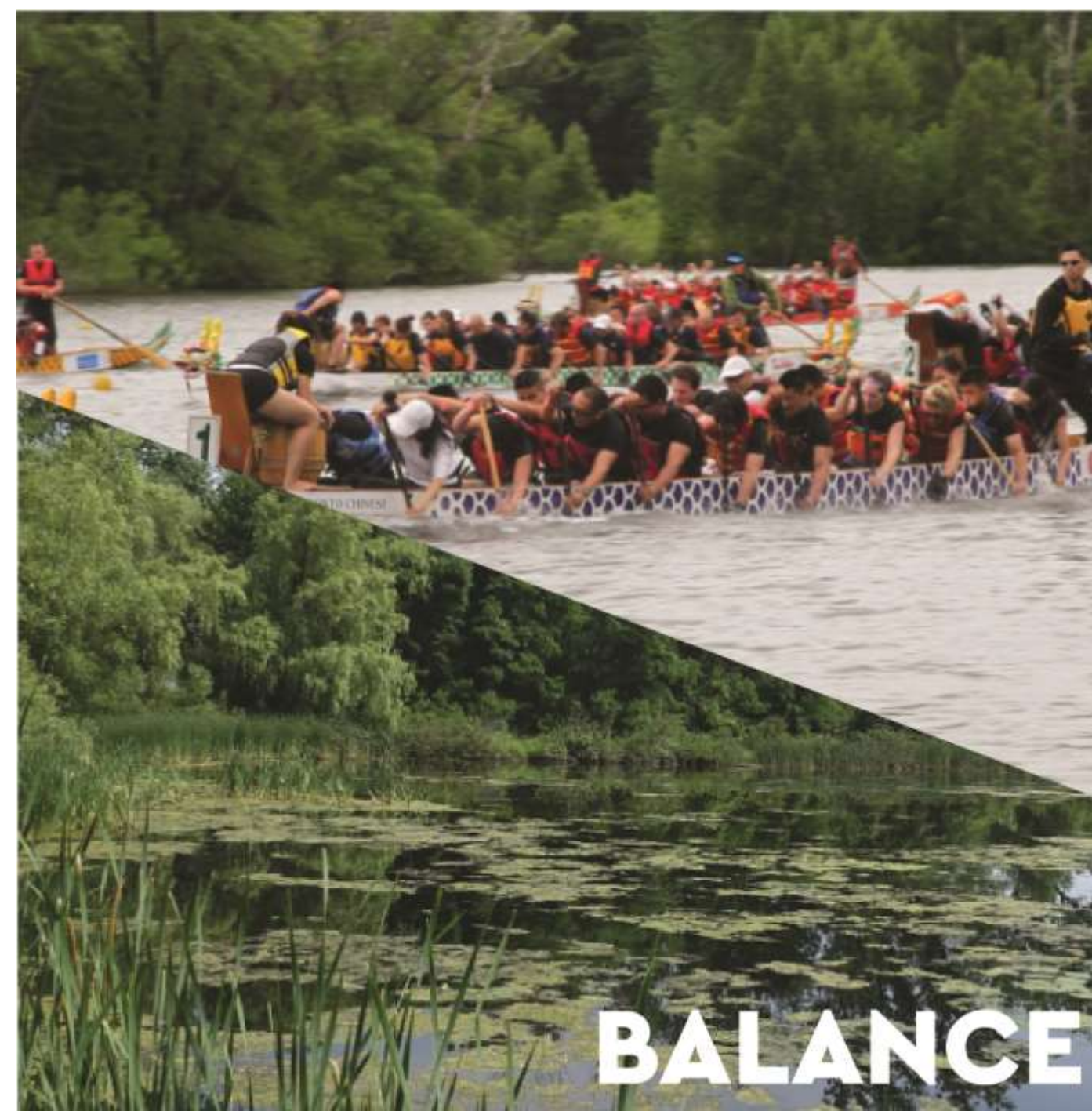
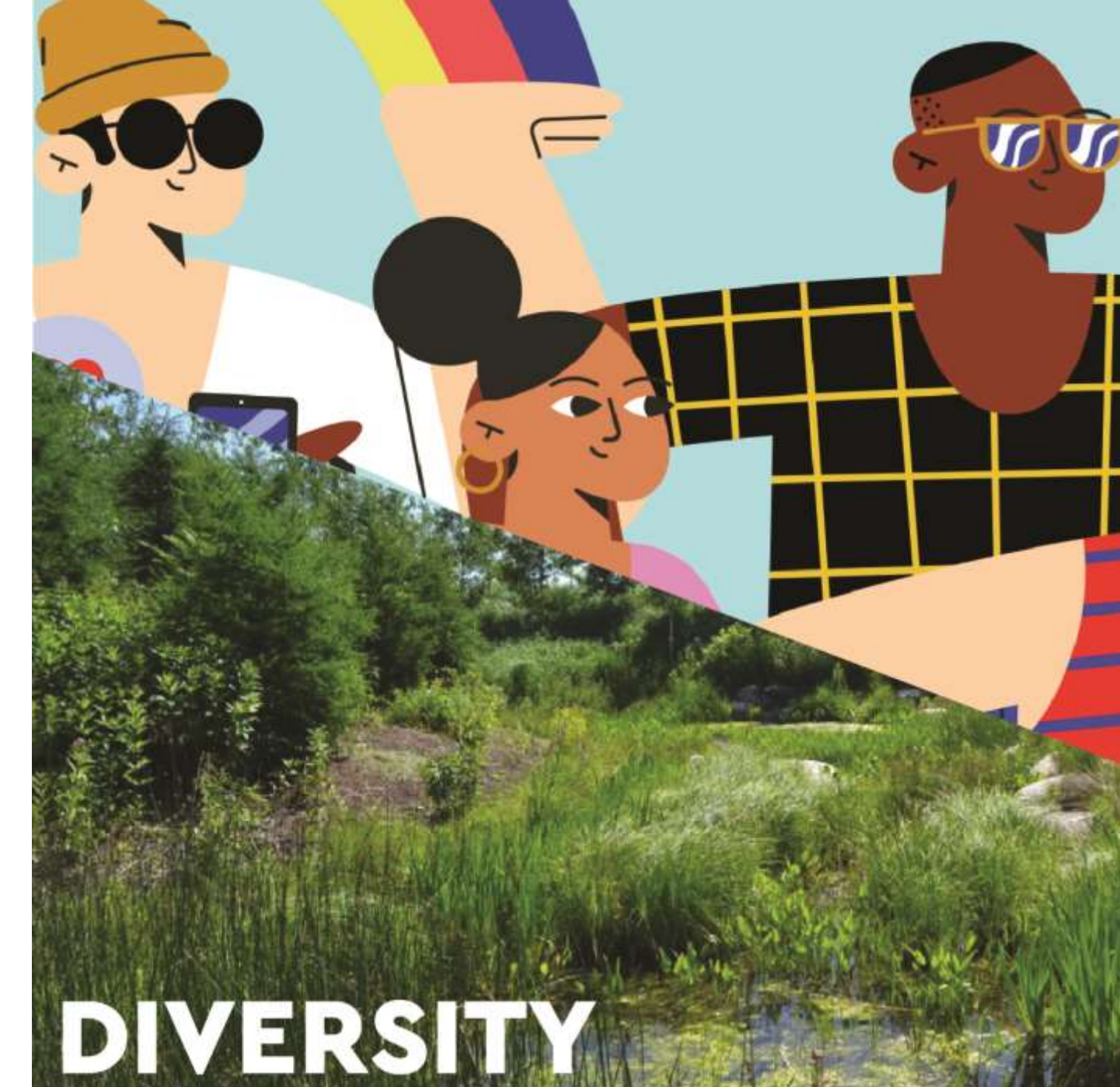


Understand the current drivers*

** A challenge or opportunity that is driving the need to improve Toronto Island Park*

- The Island's **one-of-a-kind identity** is uncelebrated.
- The **Indigenous history and significance** of the Island is not well known.
- The Island's **cultural and natural heritage** are undervalued.
- The Toronto Island **visitor experience** could be improved.
- The Island has unrealized and **under-realized business opportunities** that should be explored and improved to advance a holistic visitor experience.
- **Access and Accessibility** – It can be difficult to get to the Island.
- Toronto Island is a **dynamic natural environment** that is constantly changing.
- Toronto Island and its supporting **infrastructure is aging**.
- **Population Growth** is placing increasing demands on Parks.

Identify the values



Outline a vision to inspire



PROTECT + RESTORE

Integrating stewardship and resilience into managing sensitive environments; creating safe, welcoming spaces for all living beings; and preserving the sense of refuge and escape from urban life.



HONOUR + CELEBRATE

Respecting the values and traditions of Indigenous peoples; making space for diverse perspectives to nurture a sense of belonging for all visitors; and sharing broad stories of this complex place.



PLAY + EXPLORE

Embracing the joy and wonder of this place year-round; delivering unique and accessible activities that are Island-specific; and creating a culture of collaboration and sharing to reveal new ways to experience the park.

Establish guiding principles grounded in the values

- **Honour and respect Indigenous communities, placekeeping, and their rights and responsibilities to the islands and water**
- **Celebrate and protect the unique cultural identity and spirit of the islands**
- Prioritize, protect, and advocate for the ecological integrity of the islands
- Leverage the dynamic nature of the islands and waterways to support adaptive and flexible uses
- Demonstrate resilience, sustainability, and responsible landscape and water management
- **Prioritize equitable access and inclusion and correct the perception of private and public spaces within the park's limits**
- **Enhance visitor experience for all seasons**
- **Provide diverse amenities and experiences to encourage exploration, sharing, and discovery**
- **Support opportunities for diverse and sustainable businesses to thrive**
- Develop evidence-based strategic investments to ensure long-term and continued success, and plan in a financially sustainable manner
- Prioritize the enhancement and adaptation of undervalued assets to support new uses
- Ensure any new development embodies the spirit of the Island's character

Understand the Island in the context of the Downtown, Core Circle and Waterfront parks

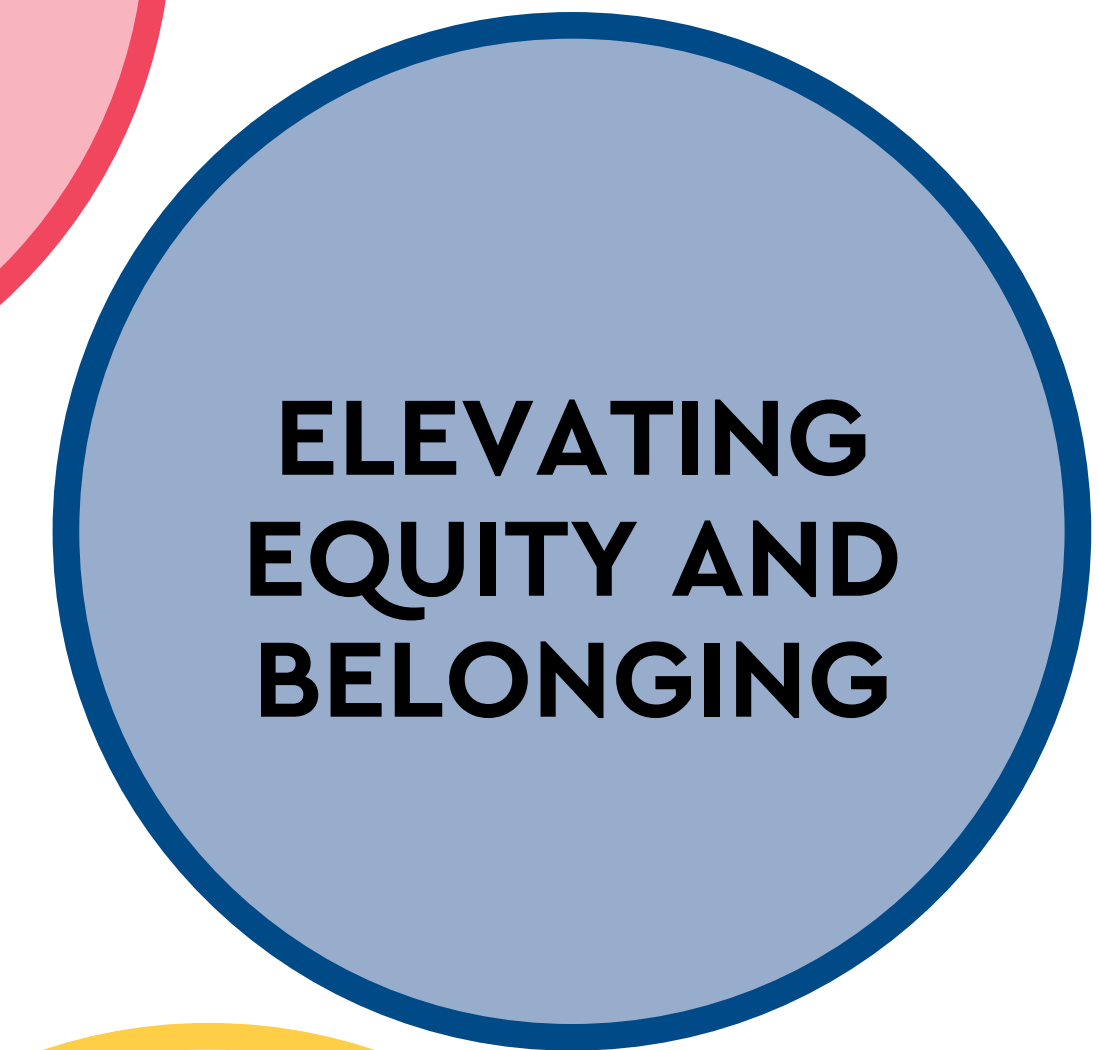


Understand the Island in the context of future city and connected park systems



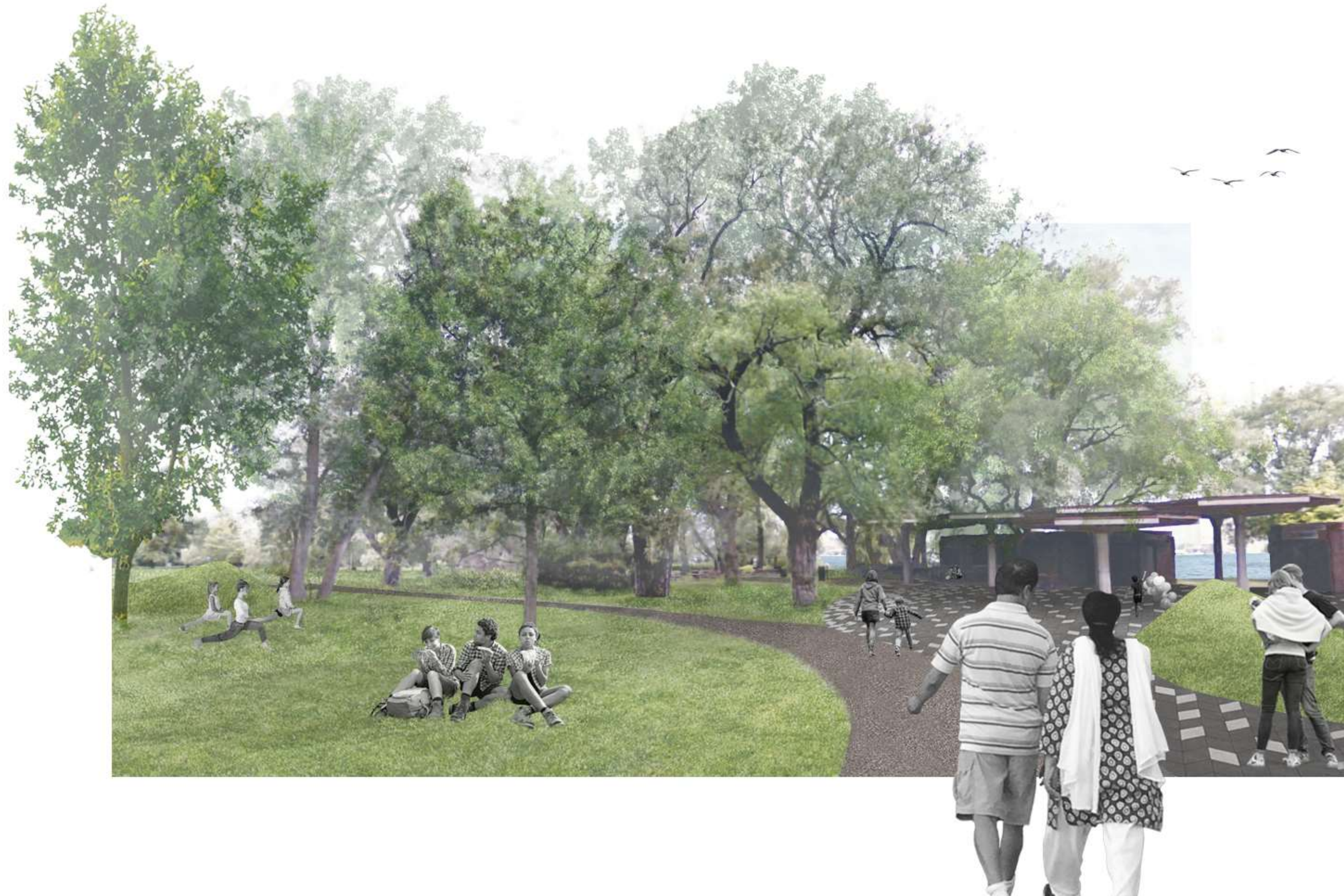
Master Plan Lenses

High-level themes that are used to evaluate and compare outcomes and proposals within the dual workstream framework and identify gaps that need further consideration and study



Elevating Equity and Belonging







Expanding opportunities for visitors experiencing disabilities to explore the park



Encouraging strategic partnerships to promote access and programs

Embedding Equity in All Lenses

Elevating Equity and Belonging: Ideas	Revealing an Indigenous Place	Enhancing Visitor Experience	Supporting a Dynamic Environment	Improving Access and Connection
Relieving economic barriers		✓		✓
Diversifying representation in Island businesses and programs	✓	✓	✓	✓
Expanding opportunities for visitors experiencing disabilities		✓	✓	✓
Encouraging strategic partnerships to promote access and programs	✓	✓	✓	✓

- Sharing diverse stories
 - Placekeeping
 - Expanding business opportunities
- Exploring partnerships
 - Exploring low cost activities on the Island
 - Cultural markers
- Making space for all living beings
 - Providing different ways to access nature
- Accessible transport to & on Island
 - Improving service & communications



Ontario

A green-tinted photograph of a park path. In the foreground, several people are walking and cycling away from the camera. The path is lined with lush green trees. In the background, the CN Tower is visible against a clear sky. The word "Discussion" is written in white, underlined text across the center of the image.

Discussion



Your insights and comments are appreciated!

Thank you!