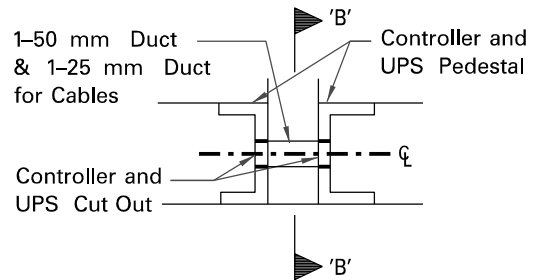
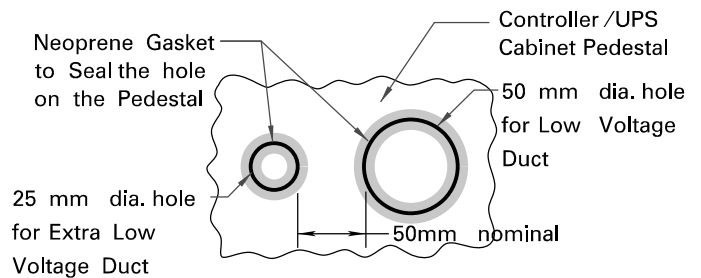


SECTION SIDE-BY-SIDE RETROFIT INSTALLATION



DETAIL A - SECTION RETROFIT INSTALLATION



SECTION 'B-B' RETROFIT INSTALLATION

NOTES

1. For duct orientation and size refer to layout drawing.
2. Form constructed with 19 mm plywood and braced around total area to prevent warping.
3. Top of concrete base shall be level.
4. Solvent weld caps (scepter or equal) of the proper size shall be placed on ends of all unused rigid PVC conduit.
5. Wedge Type Expansion Anchors installed in locations according to cabinet manufacturer's layout drawing.

Dimensions are in millimetres or metres, unless otherwise shown.



**FIGURE 4
UPS SIDE-BY-SIDE INSTALLATION
FOR RETROFIT APPLICATION**

SCALE
NOT TO SCALE

REVISION DATE
MAY, 2020

Traffic Management Section

APPROVED BY:

DRAWN BY:

PLAN No.
808.230