

New Park at 840 Dupont Street

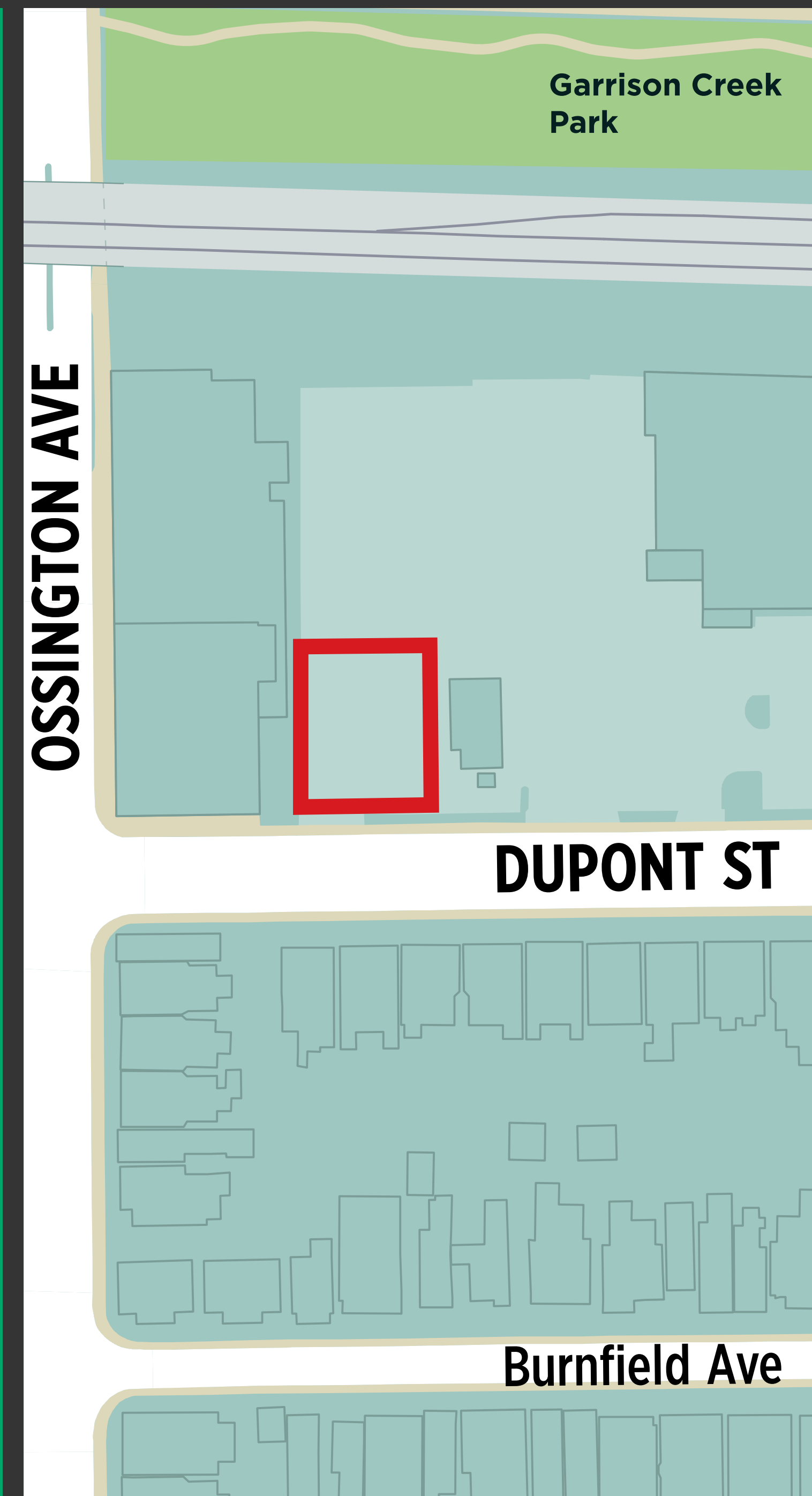
Community Workshop

Phase 1: Proposed Design

May 16, 2022



*Please note that all attendees have been muted until the discussion period.



Land acknowledgement

I'd like to begin by honouring the land that I'm on. If you are not currently in Toronto, I encourage you to learn about the lands you're on.

We acknowledge the land we are meeting on is the traditional territory of many nations including the Mississaugas of the Credit, the Anishnabeg, the Chippewa, the Haudenosaunee and the Wendat peoples and is now home to many diverse First Nations, Inuit and Métis peoples. We also acknowledge that Toronto is covered by Treaty 13 with the Mississaugas of the Credit.

Miigwech (Thank You) for being present.

Objective of tonight's meeting

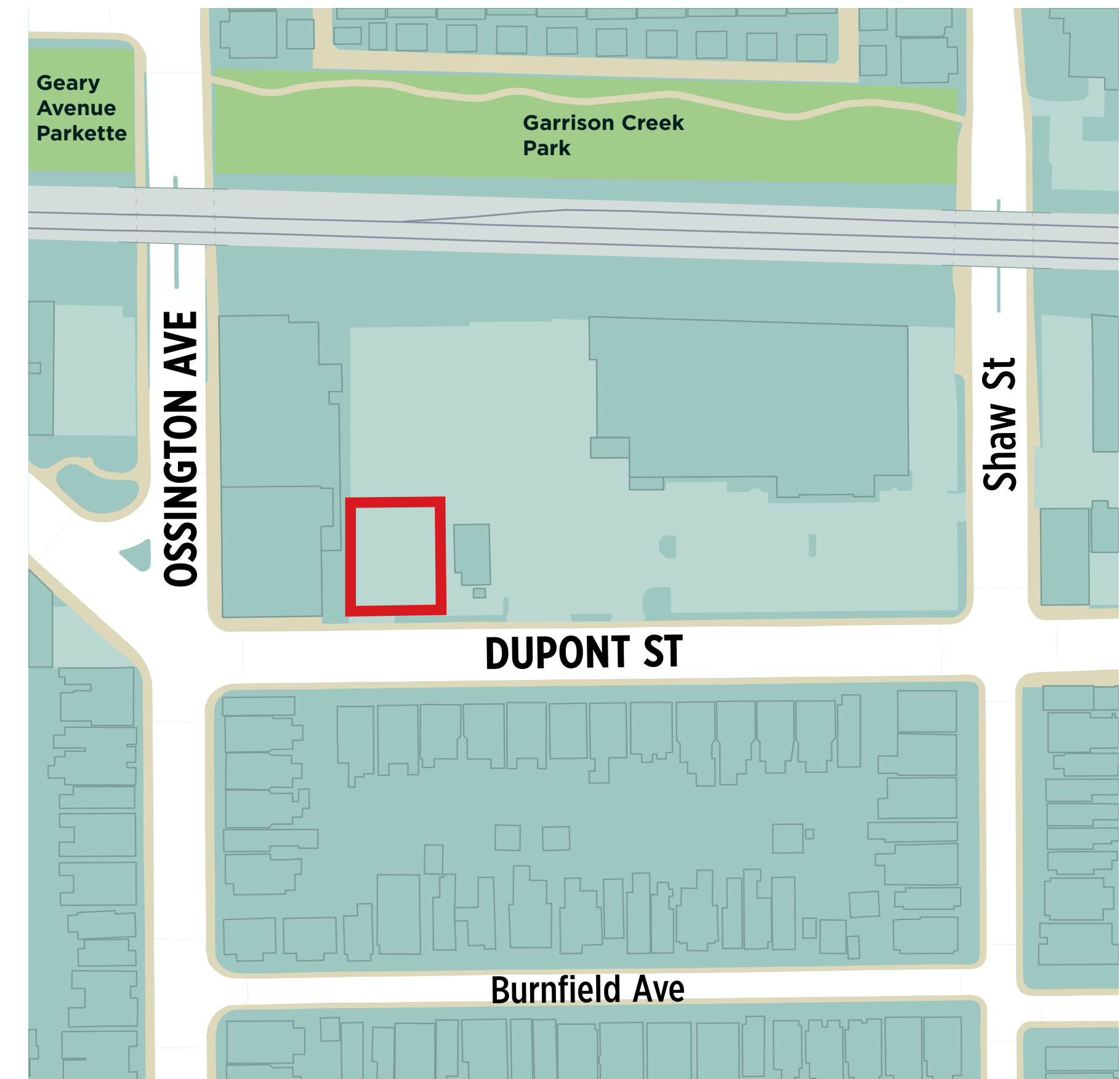
Let's create a great new community park, together!

Tonight we are presenting the proposed design that has been developed for this new park for your feedback.

A proposed design is an early stage in the design process, that broadly outlines proposes amenities, features, and layout of the space.

Tonight we will:

- Provide a project update
- Present the proposed design for feedback
- Listen to your perspectives and thoughts in breakout rooms



The new park will be located at the northeast corner of Dupont Street and Ossington Avenue, and is about the size of 1.5 basketball courts.



Tips for a successful virtual workshop



The host will unmute attendees during the discussion period.



City parks are for everyone!
Be respectful of other community members and keep an open mind.



Use the chat feature to ask questions. Or click the hand icon, beside your name from the participants list on the right.



Cameras have been enabled for this meeting. Please ensure you've considered privacy measures before sharing.



One voice at a time. Be direct and frame questions to specific speakers.



Computer audio issues? Use your cell phone for audio by clicking Audio Connection, Switch Connection, then Call Me. Press *3 to ask a question.

Agenda



Welcome, Opening Remarks
and Team Introductions



Project Context and Background



Proposed Design



Public Engagement Overview



Small Group Discussion, Questions
and Feedback

thank
you!

Next Steps + Adjourn



Project team

CITY OF TORONTO

Parks, Forestry and Recreation

Leigh Lichtenberg

PFR Parks Development
Project Coordinator/Landscape
Architect

Rajesh Sankat

PFR Capital Projects
Senior Consultant, Public Engagement

DESIGN TEAM

StudioTLA

Shadi Gilani

Principal

Hakima Hoseini

Landscape Designer

DEVELOPER

Tridel

Taylor Gascoigne

Assistant Development Manager

Dan Dissanayake

Development Manager

LOCAL COUNCILLOR'S OFFICE

City of Toronto

Councillor Mike Layton

Ward 11, University-Rosedale

Marco Bianchi

Chief of Staff



Tech and facilitation support

Technical Support

Alex Lavasidis
PFR Capital Projects
Senior Consultant, Public
Engagement

Facilitation Support

Pablo Muñoz
PFR Capital Projects
Senior Consultant, Public
Engagement

Elijah Bawuah
PFR Capital Projects
Senior Consultant, Public
Engagement



Opening remarks from local Councillor

Councillor Mike Layton

Ward 11,
University-Rosedale



Project Context and Background

Leigh Lichtenberg - City of Toronto

How will this park be delivered?



Why is this new park being created?

To coincide with the build out of a residential development project at 840 Dupont Street, the developer has a commitment to jointly/mutually design and construct their parkland dedication with the City of Toronto Parks, Forestry and Recreation Division.

Parkland dedications are obtained through development applications, which are built to coincide with the build out of the development.



How are new parks that involve developers typically funded?

New parks such as this are typically funded through the Parks & Recreation component of the Development Charges, funding through a Section 37 agreement, through donations, partnerships, or a combination of the above.



How are parks maintained?

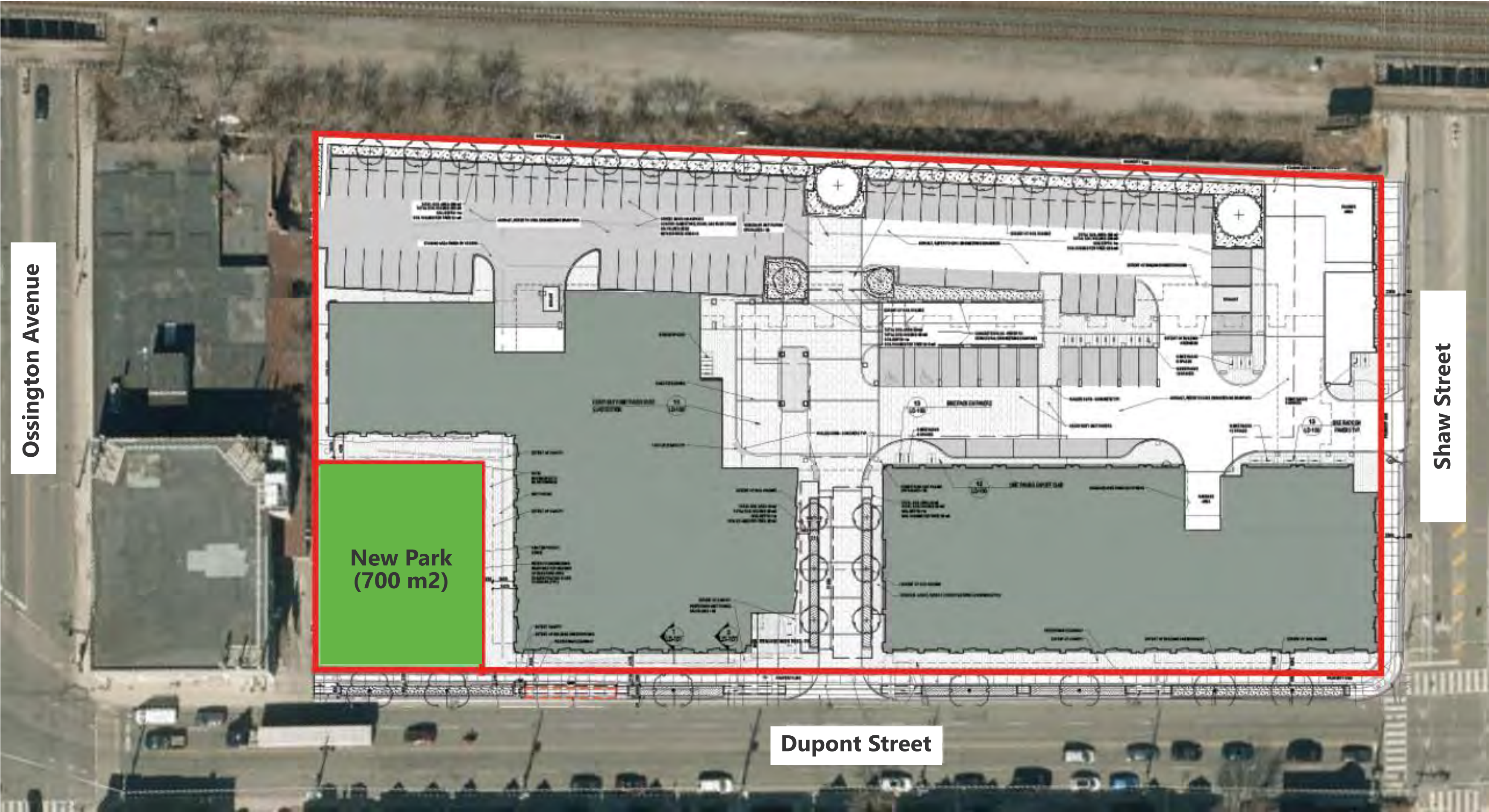
Typically, parks that involve developers are either maintained by the City's Parks Operations and Maintenance Branch, or by the land owner/condominium corporation.

New development at 840 Dupont Street

As part of the provincial planning process, the Developer is required to dedicate a percentage of their development site as municipal parkland or provide cash in lieu of parkland. The Community Planner, Parks Planner, and City Legal oversees this process.

The location of the park was preferred due to:

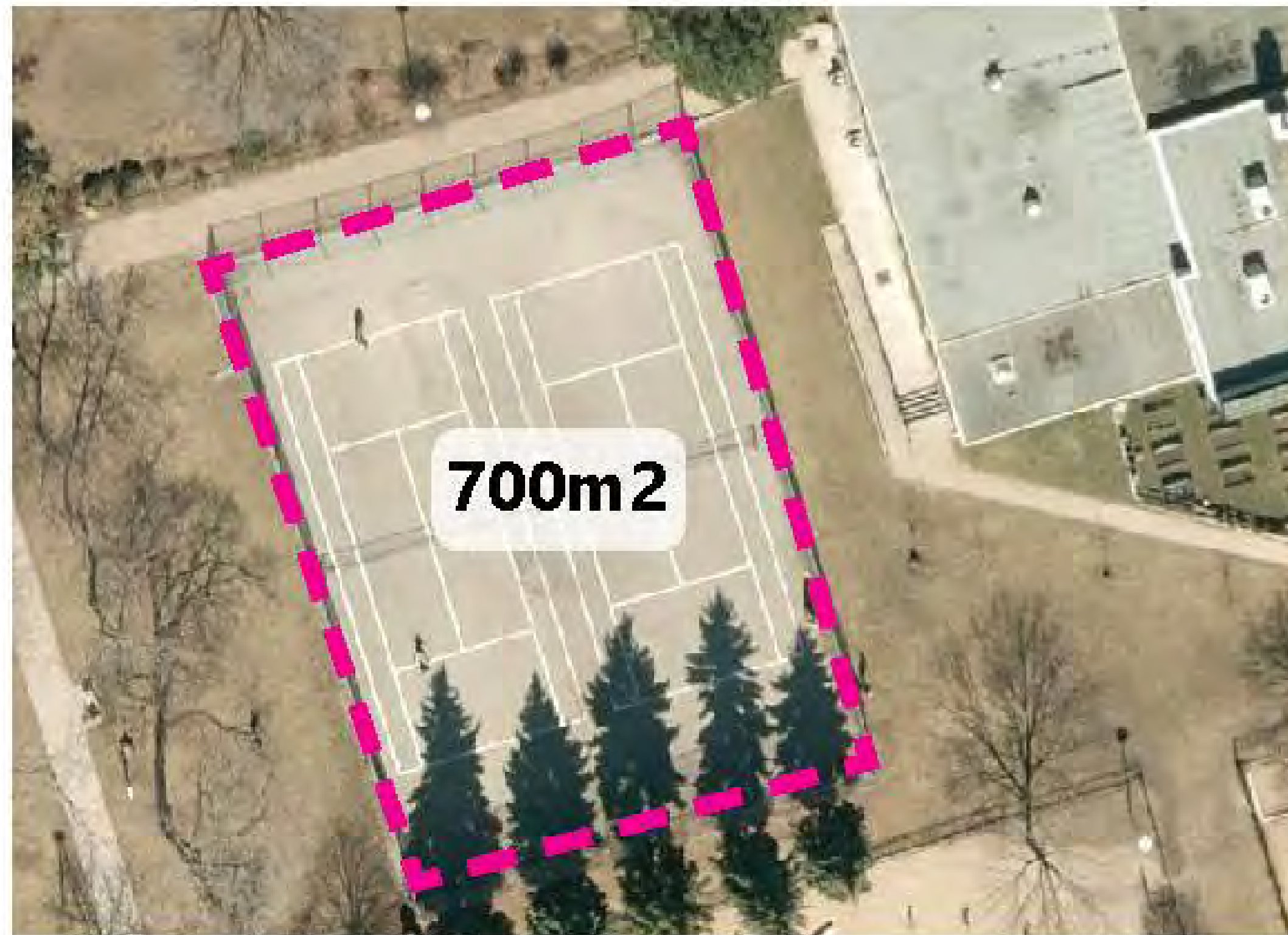
- Southern exposure
- Square configuration is best for programming in the park
- Street presence along Dupont Street provides clear visibility into the park from a safety perspective
- Adjacent to ground floor retail uses and Privately-Owned Publicly Accessible Spaces (POPs)



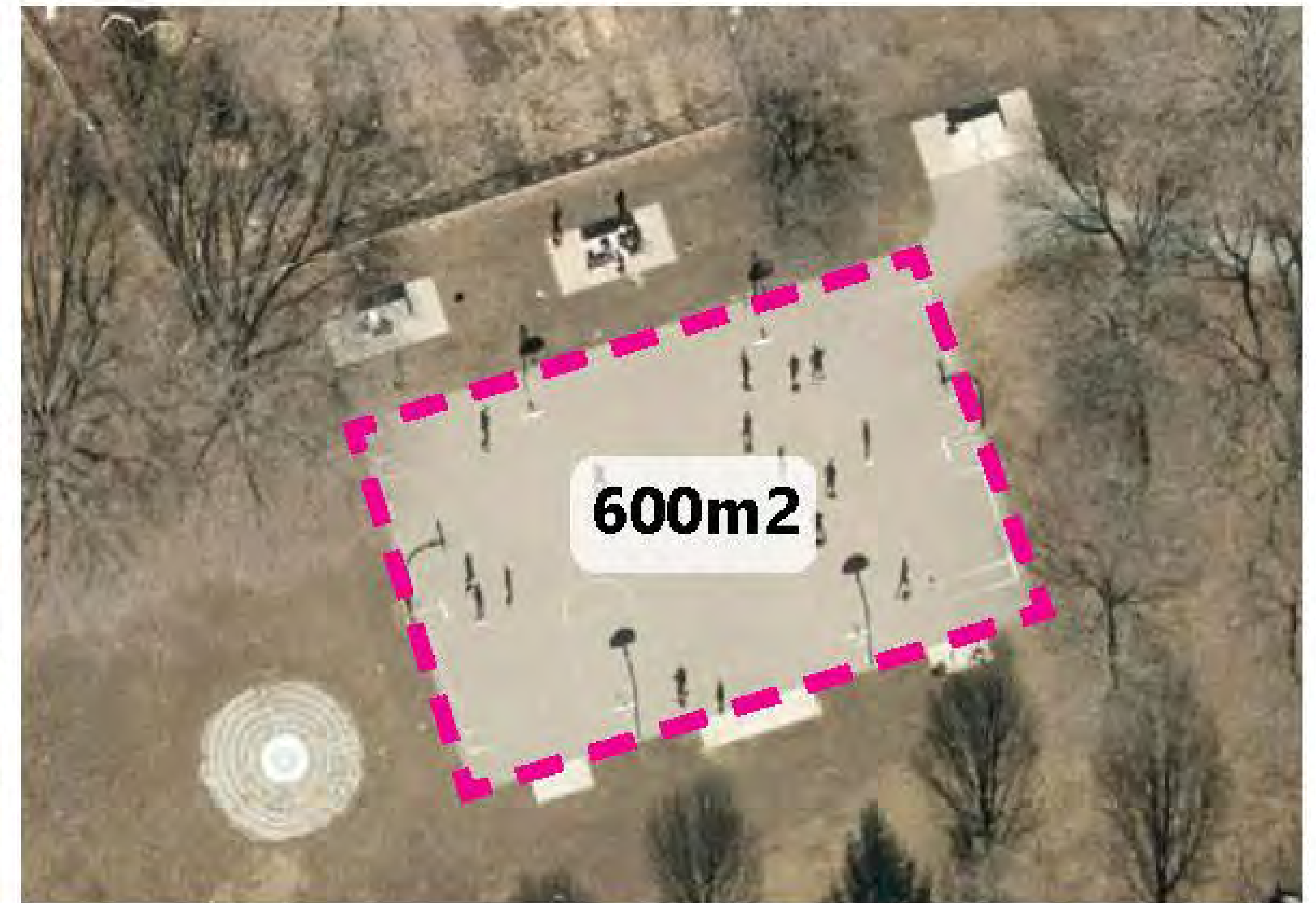
Park size comparison

The new park's size = 700 m²

DOVERCOURT PARK - TENNIS COURT

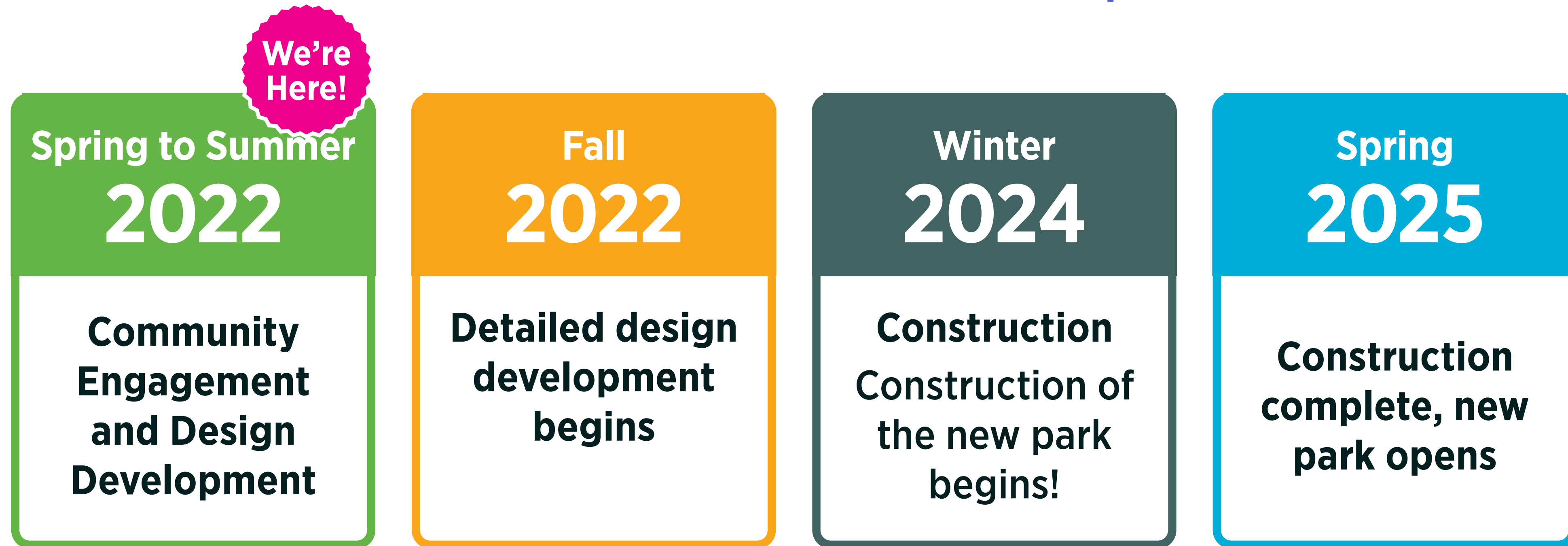


CHRISTIE PITS PARK - BASKETBALL COURT



Anticipated project timeline

To stay up to date on this project, sign up for e-updates at toronto.ca/840DupontPark.



May 10
Virtual Community Workshop

May 6 to May 27
Online Survey

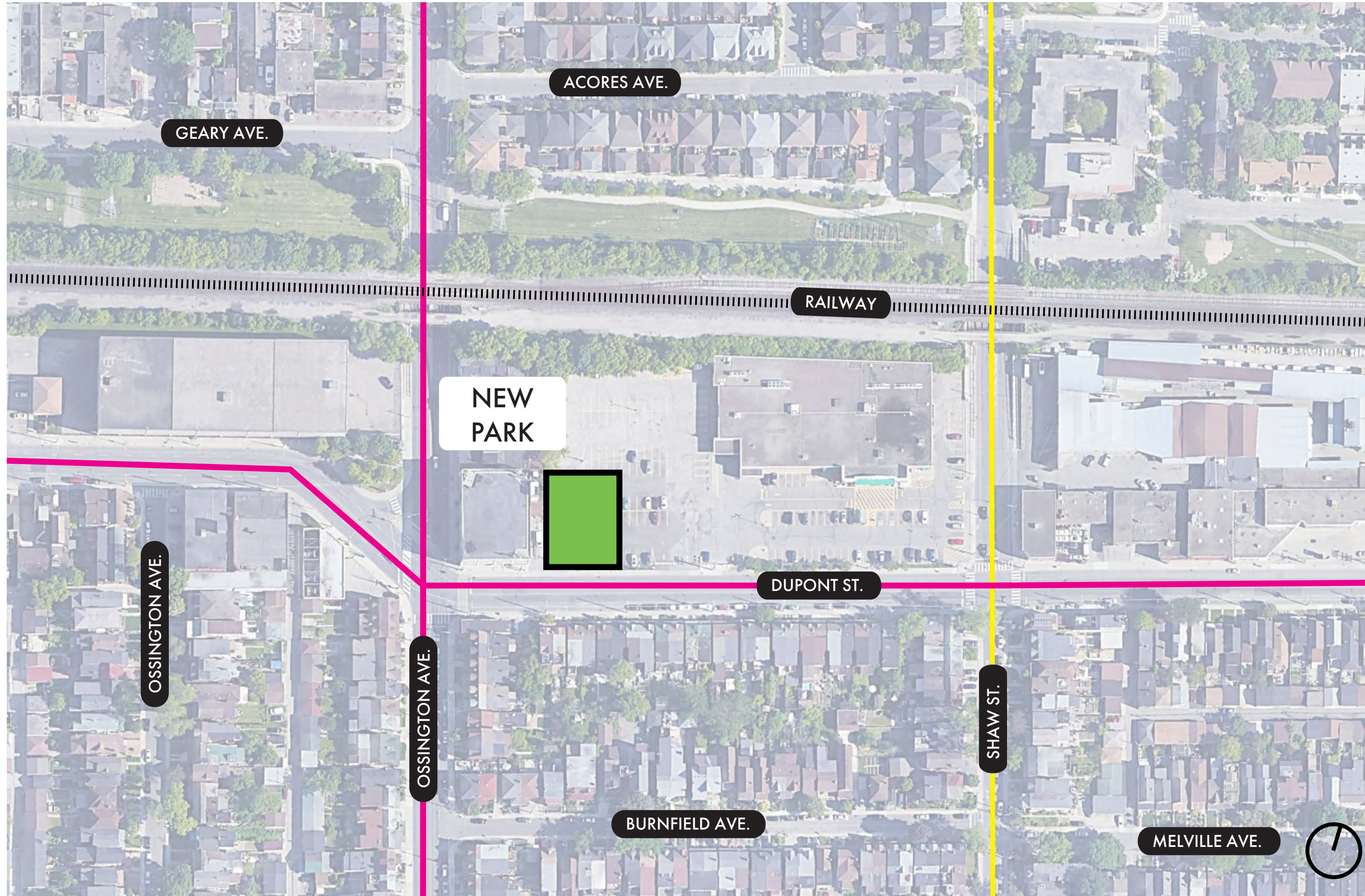
Project team begins on detailed design for the new park, prior to construction.

Detailed design expected to be completed in Winter 2023.

Proposed Park Design

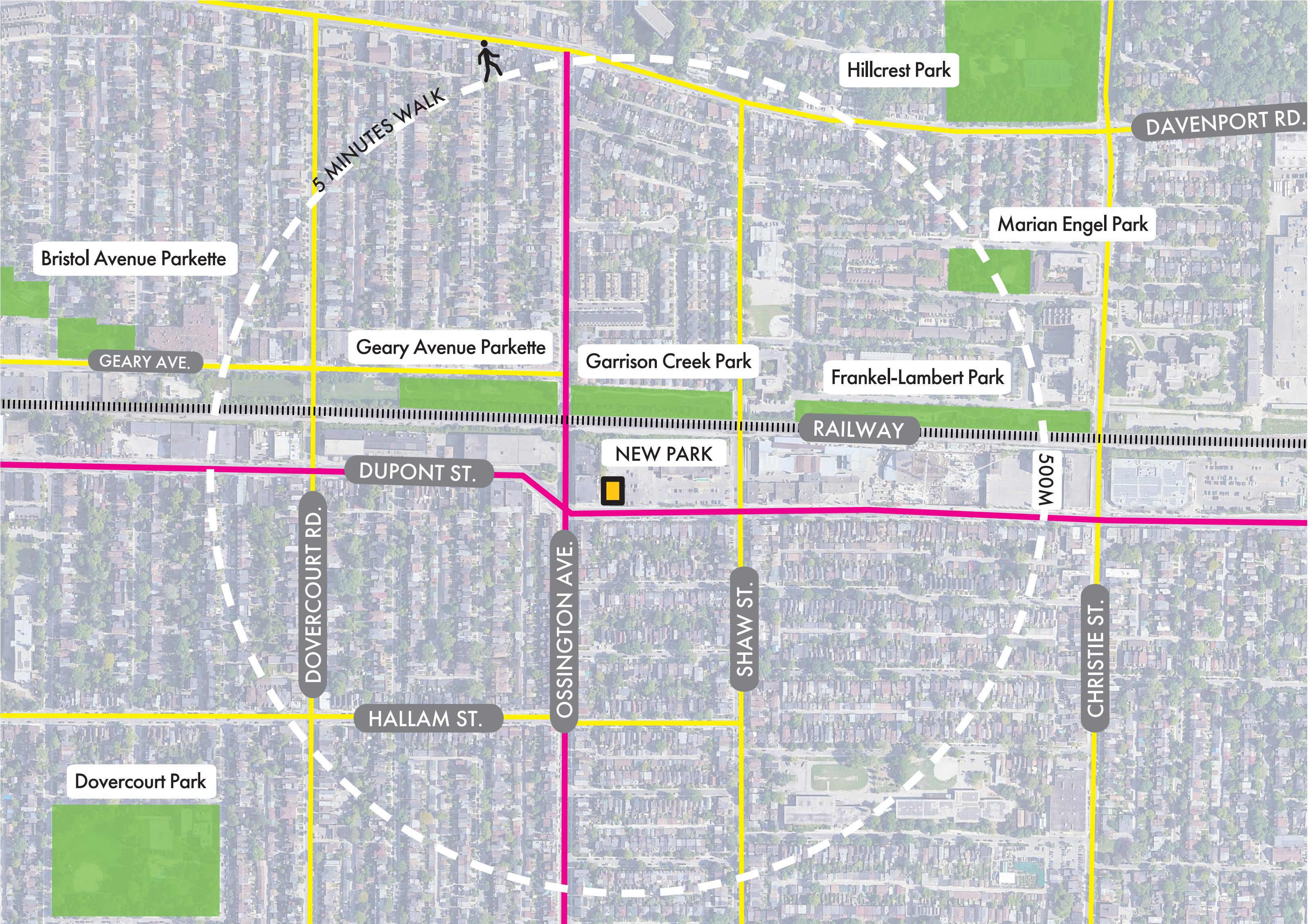
Shadi Gilani - StudioTLA

Site Location


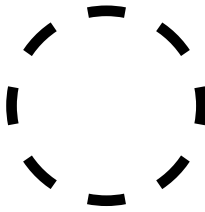



The New Park at 840-860 Dupont Street is located in the **University-Rosedale Neighbourhood** within **Ward 11**. The new 700m² park is located east of the northeast corner of Dupont Street and Ossington Avenue.

Site Location



LEGEND

-  New Park
-  500m Radius
-  City Parks

PARK LIST

- Frankel-Lambert Park (playground, seating, basketball)
- Garrison Creek Park (seating, community garden)
- Geary Avenue Parkette (playground, seating, wading pool)
- Bristol Avenue Parkette (playground, seating)
- Marian Engel Park (playground, seating, wading pool)
- Hillcrest Park (playground, seating, off-leash area, tennis court, wading pool, basketball)
- Dovercourt Park (playground, seating, baseball, fire pit, tennis court, wading pool)



Dupont looking east of Bathurst, 1925



Dupont looking east toward Christie, 1926



Dovercourt north of Dupont, 1904



Dupont and Olser looking east, 1914



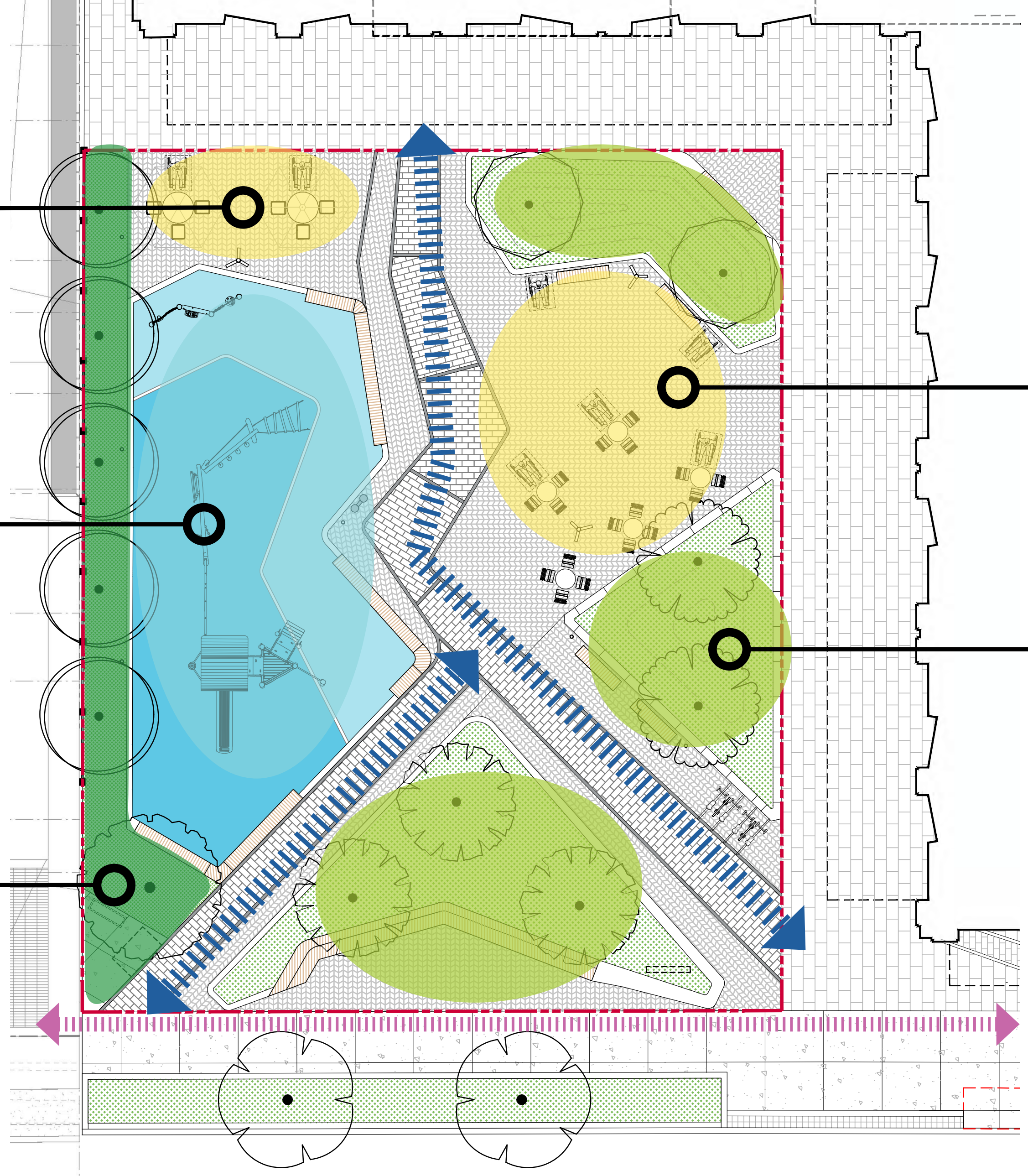
Urban Zone, Gathering Space



Active Zone, Playground or Fitness Station



Buffer Zone, Planting Areas



Urban Zone, Gathering Space



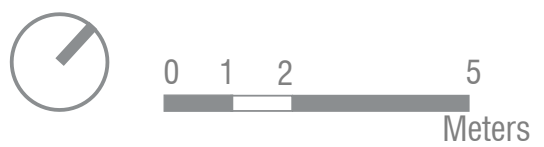
Buffer Zone, Tree & Understorey Planting

- URBAN ZONE/
GATHERING SPACE
- ACTIVE ZONE
- BUFFER ZONE
- INTERIOR PATHWAYS
- SIDEWALK
- LIMIT OF PARK
BOUNDARY





- 1 Feature Paving
- 2 Playground/ or Fitness Station
(Rubberized Surface/ or mulch fiber)
- 3 Understorey Planting
- 4 Planting Berm
- 5 Buffer Planting
- 6 Water Bottle Filler
- 7 Seating
- 8 Feature Seating
- 9 Picnic Table with Umbrella Designated
- 10 Trash Receptacle
- 11 Electrical Box
- 12 Sculptural Light
- 13 Feature Pedestrian Light Pole
- 14 Bike Rack
- 15 Fence
- 16 Park Signage



Site Elements

Paving Material



Site Furnishing



Lighting Structure



Fence



Playground - Option 1

1



Parkour (Age Group: 5-12)

Activity Type

- Balance
- Climb
- Hang in Arms
- Sway
- Socialize
- Rules Play
- Sensory

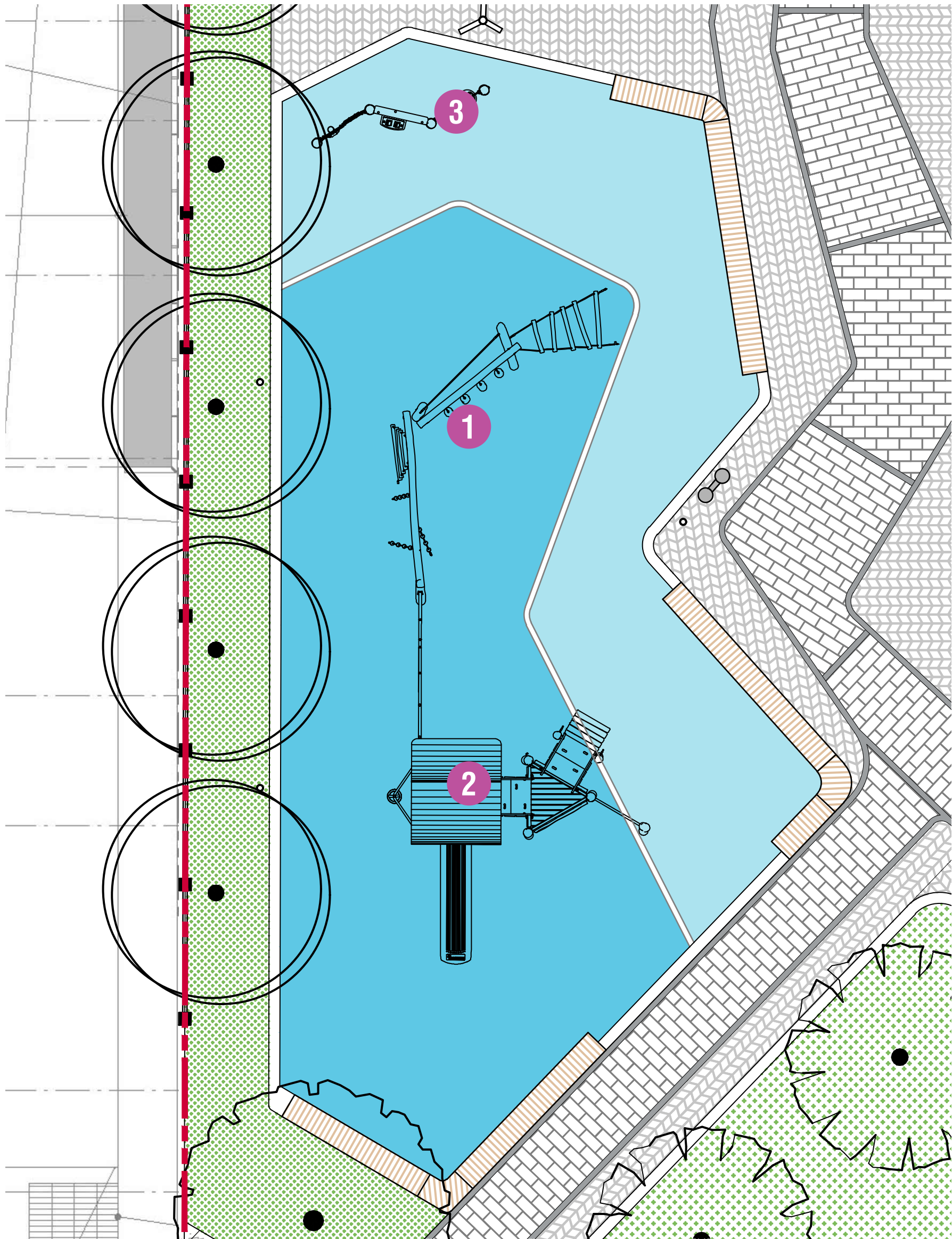
2



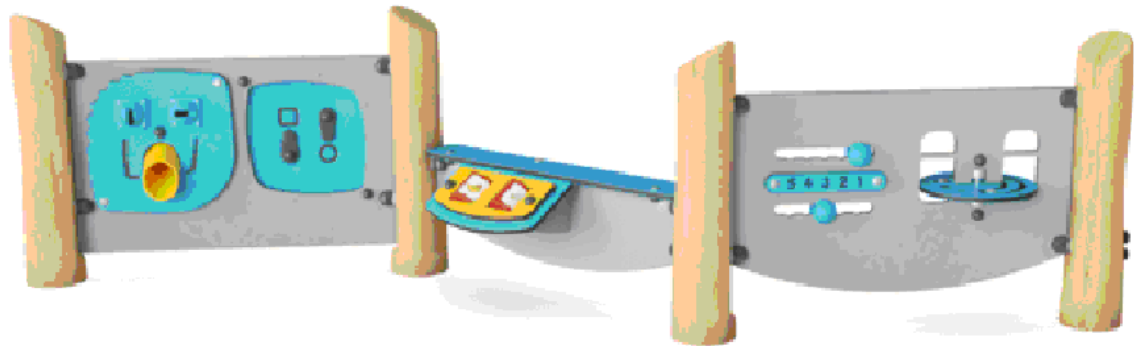
Double Tower with Spider Net and Slide (Age Group: 5-12)

Activity Type

- Balance
- Climb
- Glide
- Hang in Arms
- Pull
- Push
- Rotate
- Slide
- Socialize
- Sensory
- Wonder



3



Learning Play Panel (Age Group: 6 months - 5)

* Accessible for children with disabilities per CSA and Canadian Coalition for Accessible Playspaces.

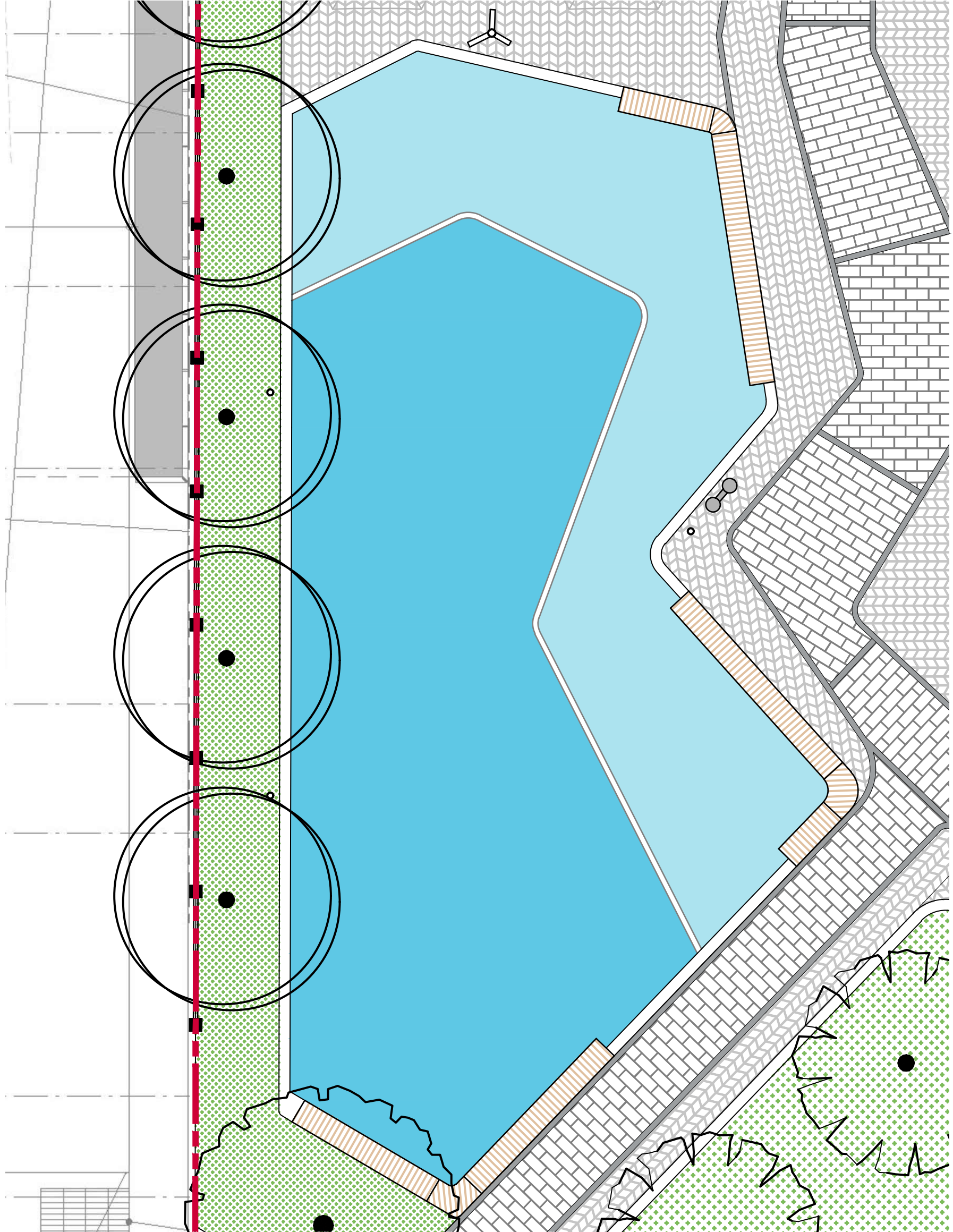
Activity Type

- Construct
- Sensory
- Socialize
- Wonder

Outdoor Fitness Area - Option 2



Fitness Equipments



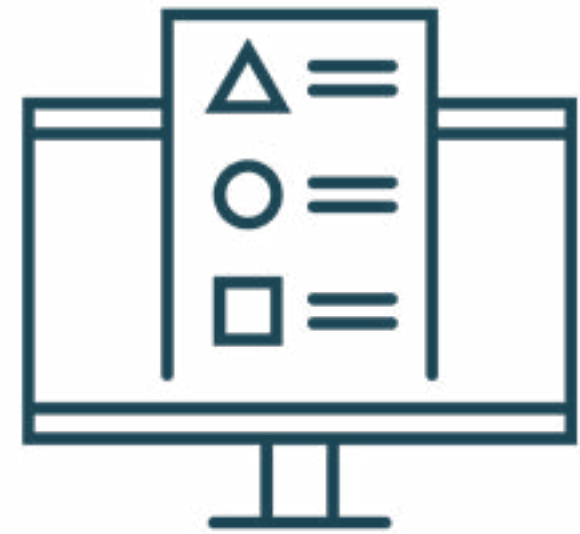
Fitness Equipments

Public Engagement Overview

Rajesh Sankat - City of Toronto

Public engagement

Phase 1: Proposed Design



Online Survey

May 4 to May 27, 2022



Community Workshop

Today!

Phase 2: Preferred Design



Open House

Summer 2022



Community outreach and promotions



Project Webpage

Visit the project webpage for updates, survey links, and more!



Project Signage

Signage posted near site to let residents and community members know of upcoming consultation



Social Media

Follow @torontoPFR to keep up to date on all PFR-related events!

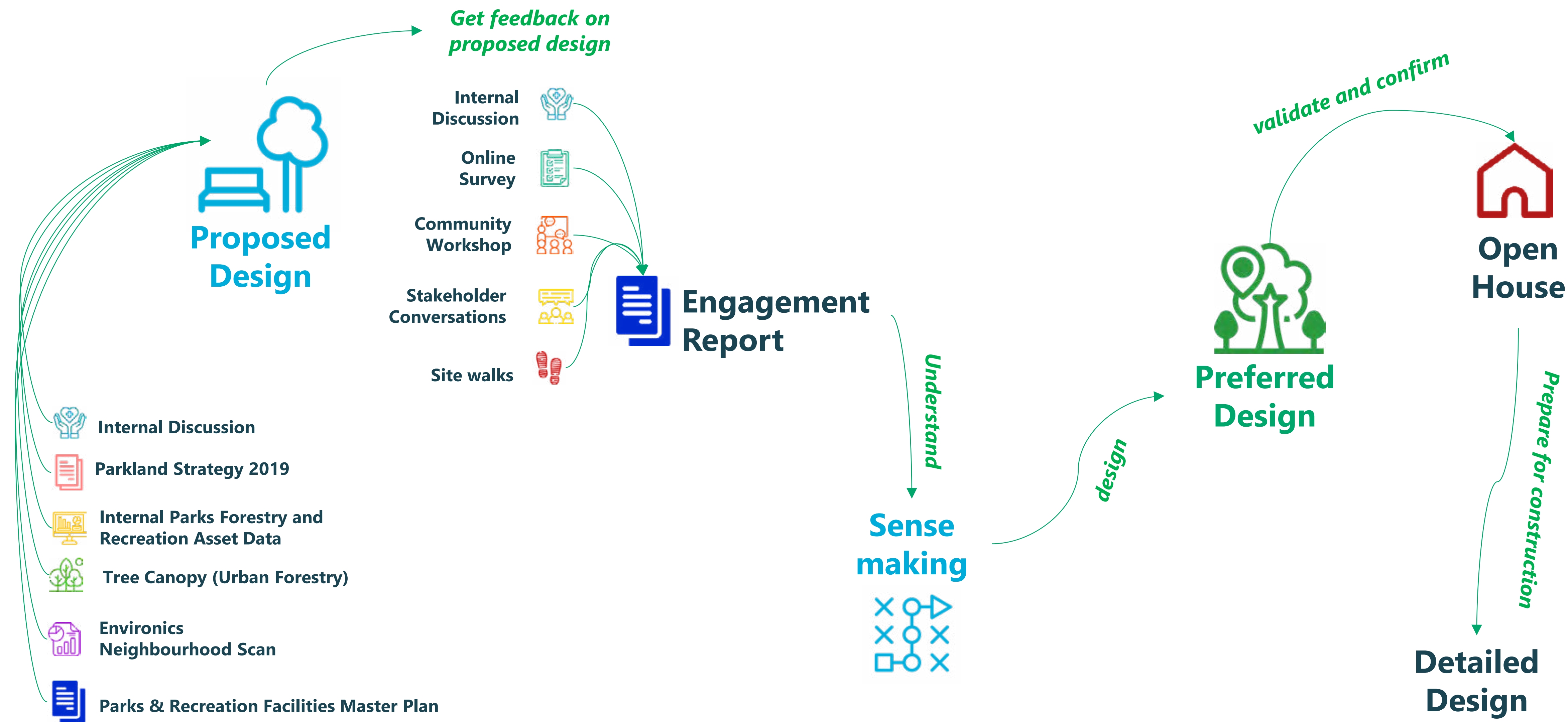


Postcards

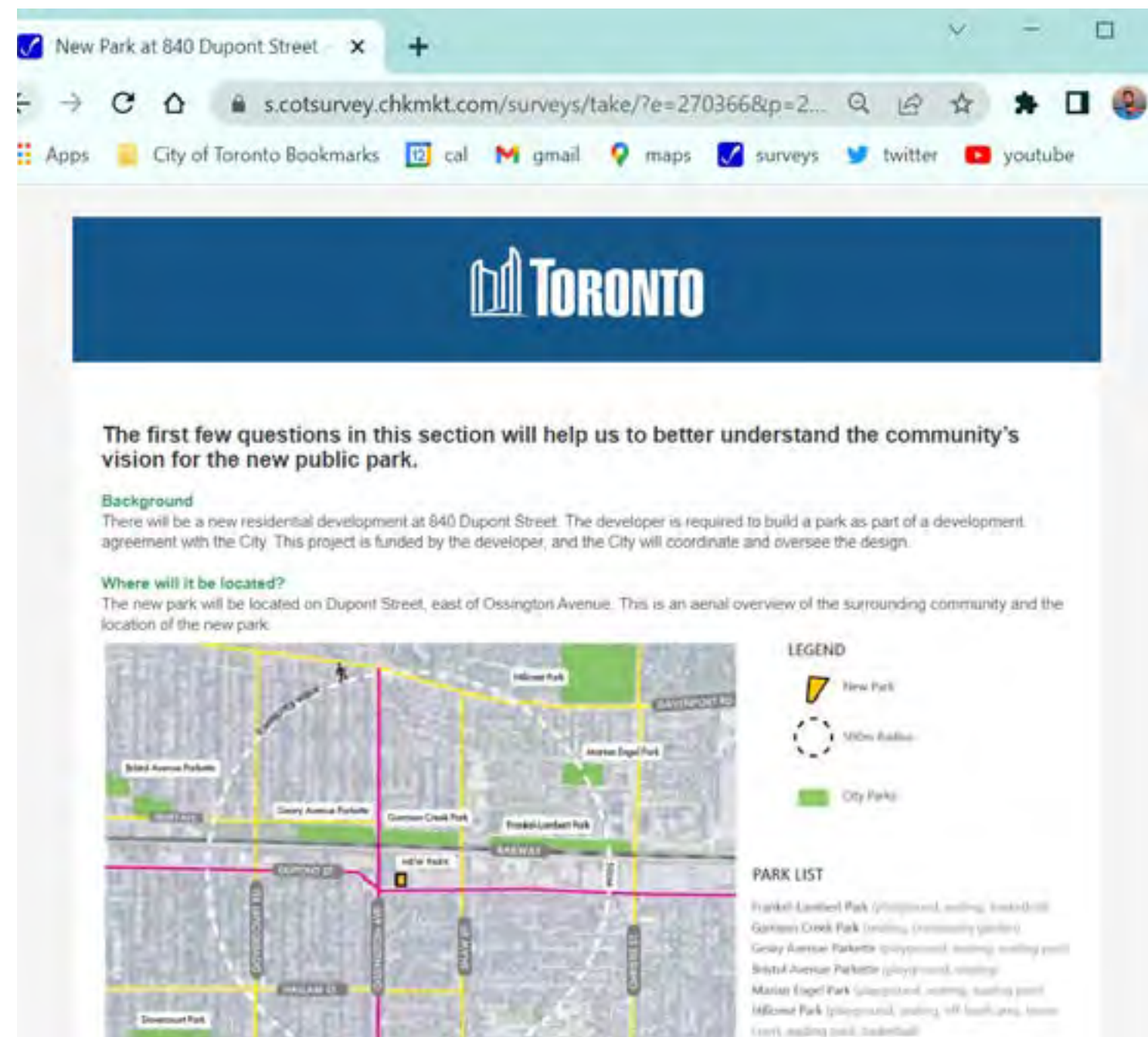
Community postcards were sent to residents living near the new park site (within 1km)



How feedback is incorporated



Online survey



Online Survey

Survey responses were received by 236 people (as of May 12, 2022). The survey is aimed at getting feedback on the Proposed Design, to help us confirm priorities for a Preferred Design of the park.

The survey closes on May 27, 2022 and can be accessed at toronto.ca/840DupontPark.



Who have we heard from?

63% of survey respondents live less than 10 minutes walking distance to the new park

25% of survey respondents rely on parks for outdoors space:

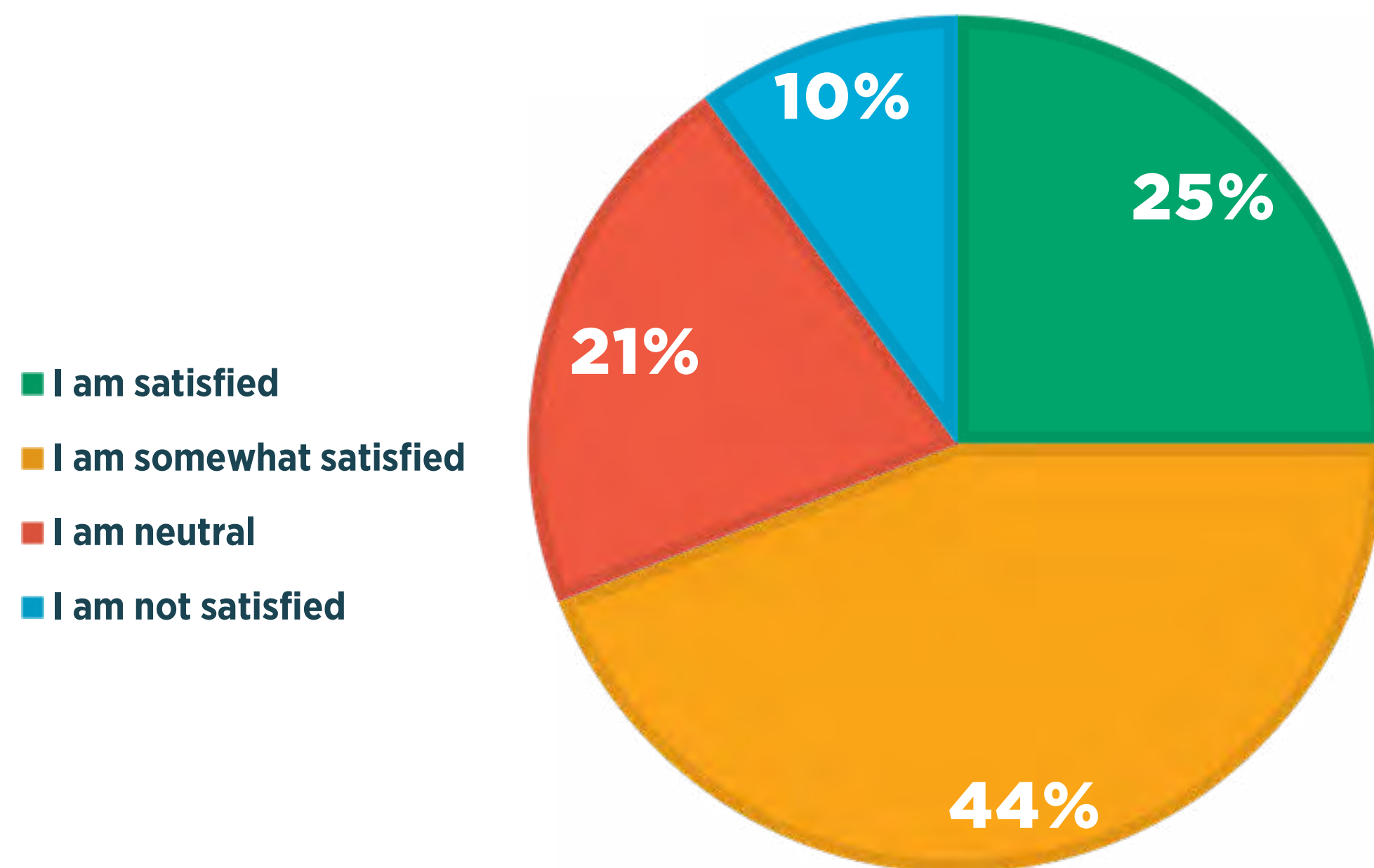
- 25% do not have access to private or semi-private outdoor space
- 24% have access to semi-private/shared outdoor space

64% of survey respondents do not have children in their household that use City of Toronto parks and playgrounds.



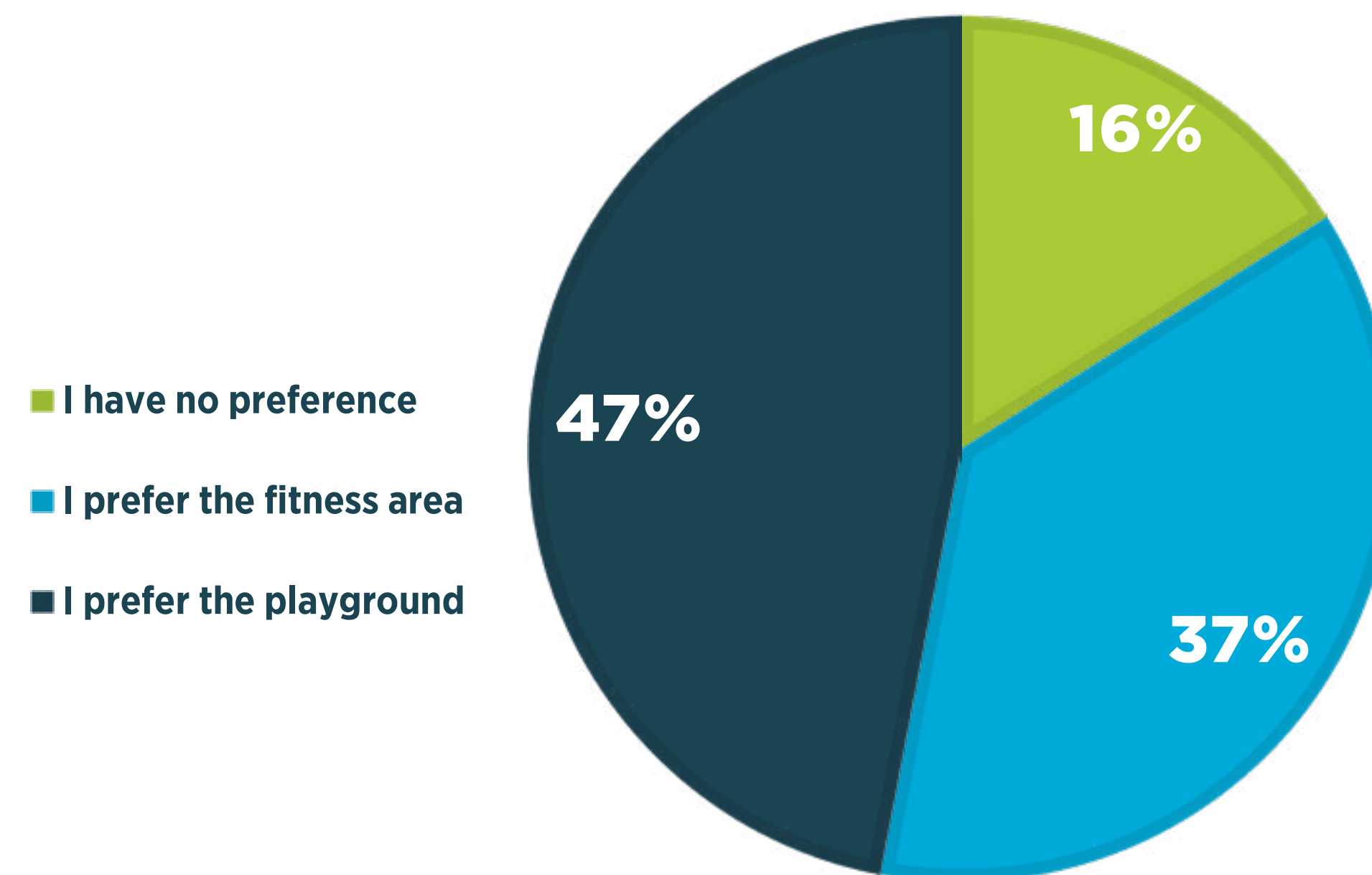
Early design feedback

HOW SATISFIED ARE YOU WITH THE PROPOSED DESIGN?



The majority of survey respondents are satisfied or somewhat satisfied with the proposed design for the new park.

DO YOU PREFER A FITNESS AREA OR PLAYGROUND?



The majority of survey respondents prefer a playground to a fitness area.



Secondary survey feedback



**More green space,
plantings, trees**



**Safety
considerations**



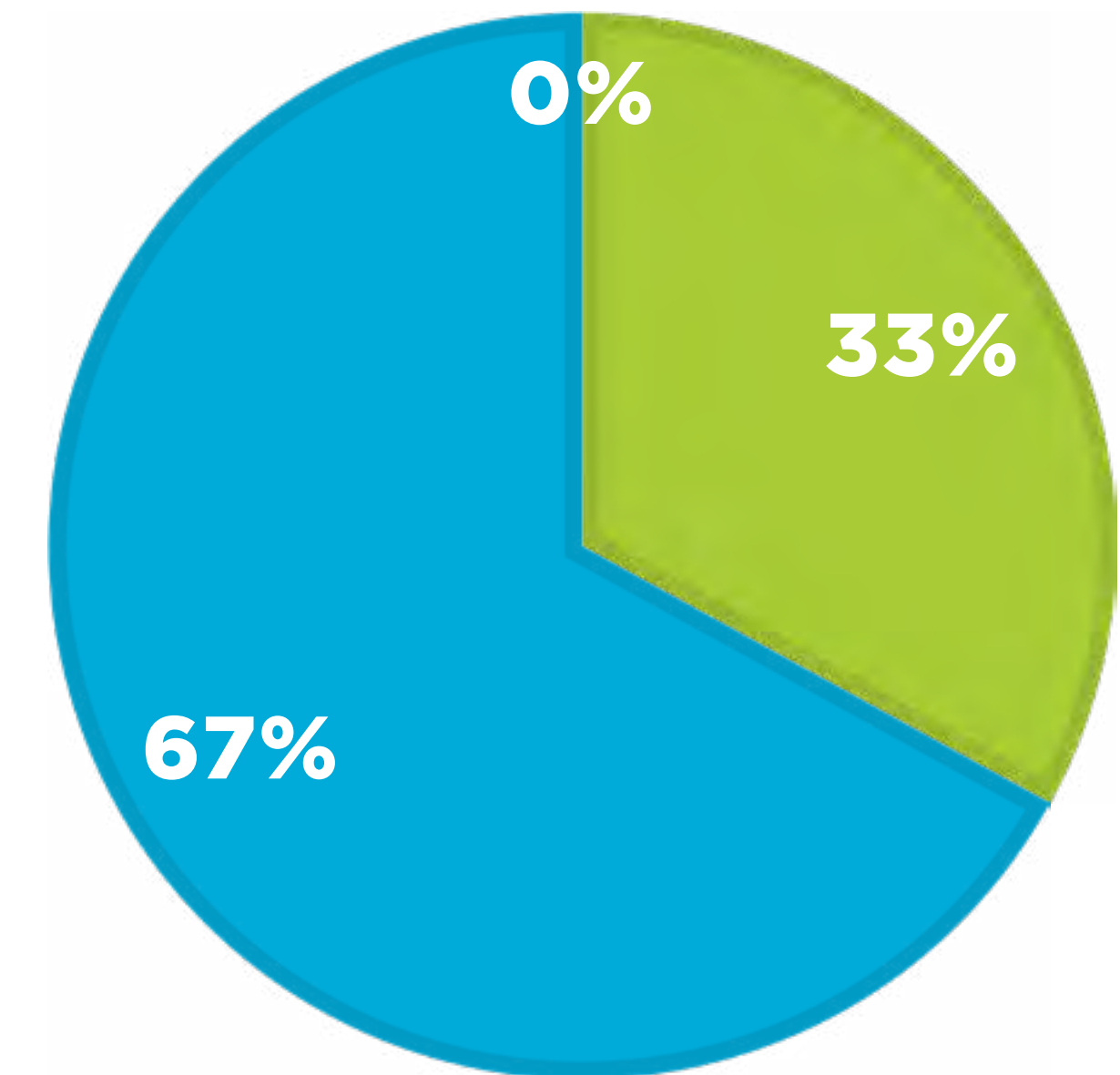
**Size and location
of the park**



**Seating in the
park**

HOW DO YOU FEEL ABOUT THE AMOUNT OF PAVEMENT AND GREEN SPACE?

- There is the right balance
- Too much paved surface
- Too much green space



Questions of clarification?

Frequently asked questions

Why is the park so small, and the development is so large?

As part of the Provincial planning process, the Developer is required to dedicate a percentage of their development site as municipal parkland or provide cash in lieu of parkland. The Community Planner, Parks Planner, and City Legal oversees this process.

Why is the park located here?

The location was preferred due to a variety of factors, including southern exposure, ability to get a square configuration which is typically best for programming, nearby street presence along Dupont, and the site is adjacent to ground floor retail uses and Privately-Owned Publicly Accessible Spaces (POPS) that will help to animate the park.



Frequently asked questions

How does the park design take safety considerations into account?

- Linear benches have been strategically placed to control access points to the Active Zone
- Along the street frontage, a raised planter will create a barrier to Dupont Street
- The park is placed on the western side to avoid conflict with the activity in nearby POPs, and a fence barrier is placed on the western limit to create a controlled barrier

It looks like the survey results have come out in favour of a playground. How will a decision be made at the end of the day?

The survey is one input in an entire ecosystem of consultation feedback. Following engagement, the project team will review all feedback, options and preferences alongside technical considerations before proceeding.



Small Group Discussion

Share your thoughts and perspectives on the proposed design in facilitated breakout rooms.

Small Group Discussions



In a moment you will be prompted to join a breakout room to discuss the Proposed Design for the new park in detail. When prompted, please accept the invitation to join the breakout room.

When providing your feedback, consider:

- What elements of the design do you like in regards to safety? What elements do you think could be refined or improved?
- What elements of the design make you want to visit the park? What needs to be improved in order to have you/family/friends visit the park?



Small Group Discussions



Breakout Room 1

Facilitator
Rajesh Sankat

Design:
Shadi Gilani

Breakout Room 2

Facilitator
Elijah Bawuah

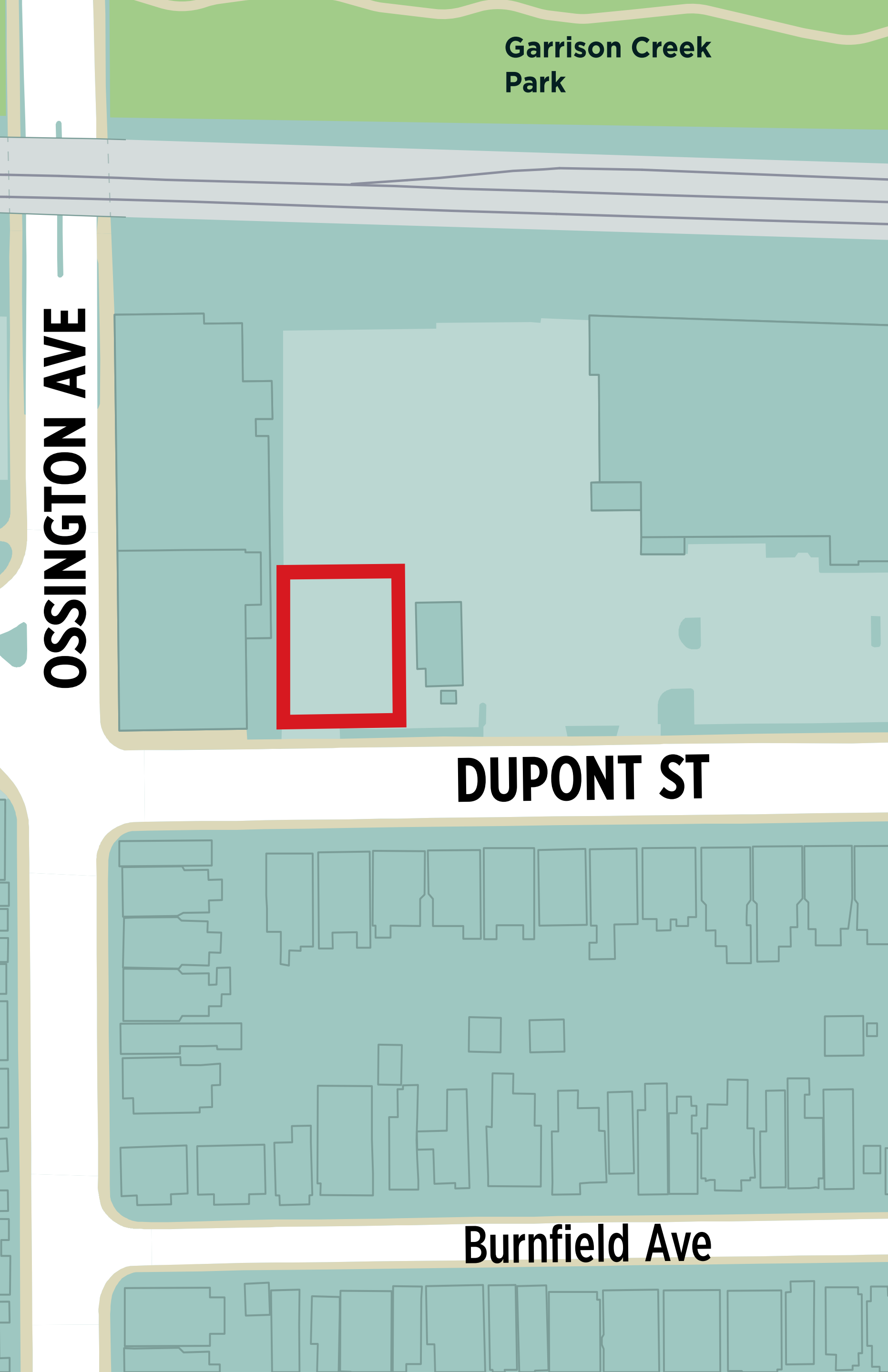
Design
Leigh
Lichtenberg

Breakout Room 3

Facilitator
Pablo Muñoz

Design
Hakima Hoseini





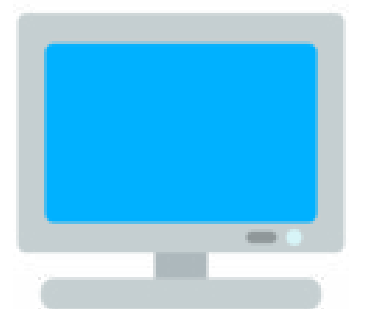
Next Steps

Visit the project webpage to:
www.toronto.ca/840DupontPark

Share your detailed feedback through
the online survey available until
May 27, 2022



Access this presentation online and a
consultation summary when available



Sign up for e-updates to receive all
project updates



Thank you!

For further comments or questions, contact:

Leigh Lichtenberg, Project Coordinator and Landscape Architect

PFR Parks Development

Leigh.Lichtenberg@toronto.ca

437-235-7022

Thank you for spending your evening with us!

