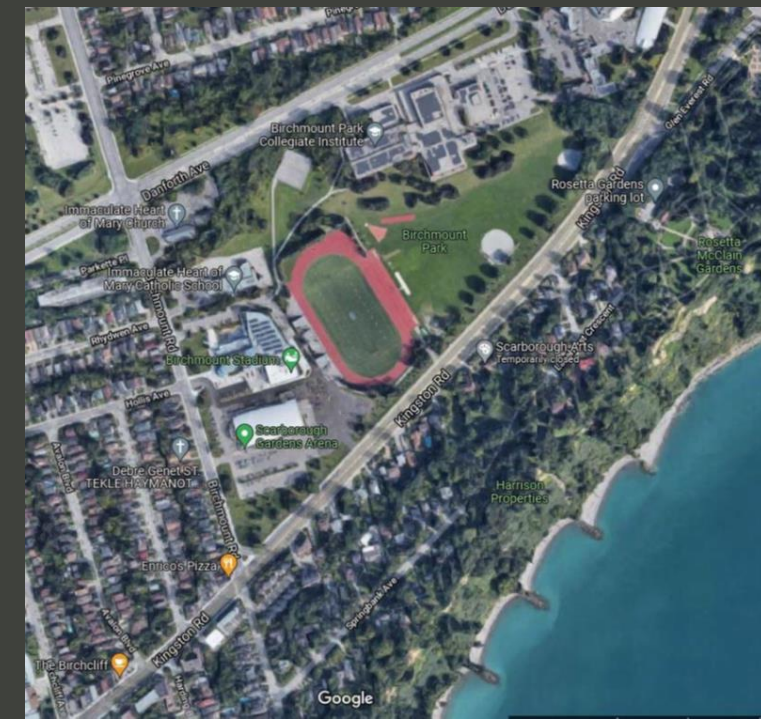


Scarborough Gardens Arena Improvements

Information Session
June 7, 2022



Land Acknowledgement

The land I am standing on today is the traditional territory of many nations including the Mississaugas of the Credit, the Anishnabeg, the Chippewa, the Haudenosaunee and the Wendat peoples and is now home to many diverse First Nations, Inuit and Métis peoples. I also acknowledge that Toronto is covered by Treaty 13 signed with the Mississaugas of the Credit, and the Williams Treaties signed with multiple Mississaugas and Chippewa bands.



Facility Improvements!

Tonight we are presenting the facility improvements at Scarborough Gardens Arena.



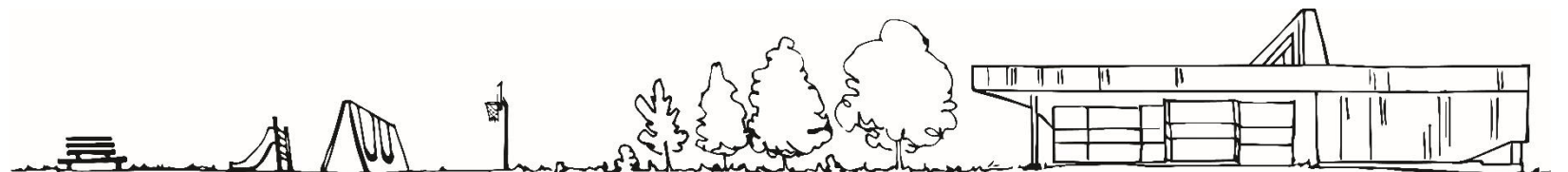
Webex Tips, Meeting Goals & Introductions

Presentation

- **Project Background**
- **Design & Improvements**
- **Timeline**

Questions of Clarification

Next Steps



Tips of Engagement for a Successful Virtual Meeting



All participants have been muted for this meeting.



All cameras have been **turned off** for this meeting.



Use the Q&A feature to ask panelists questions. Or click the hand icon, beside your name from the participants list on the right.



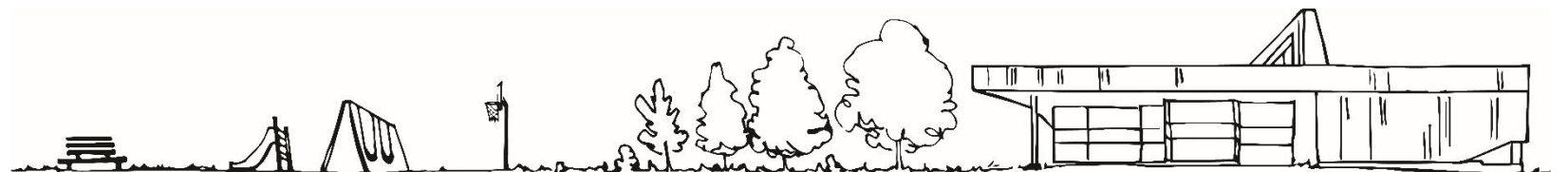
Computer audio issues?

Use your cell-phone for audio by calling:


416-915-6530

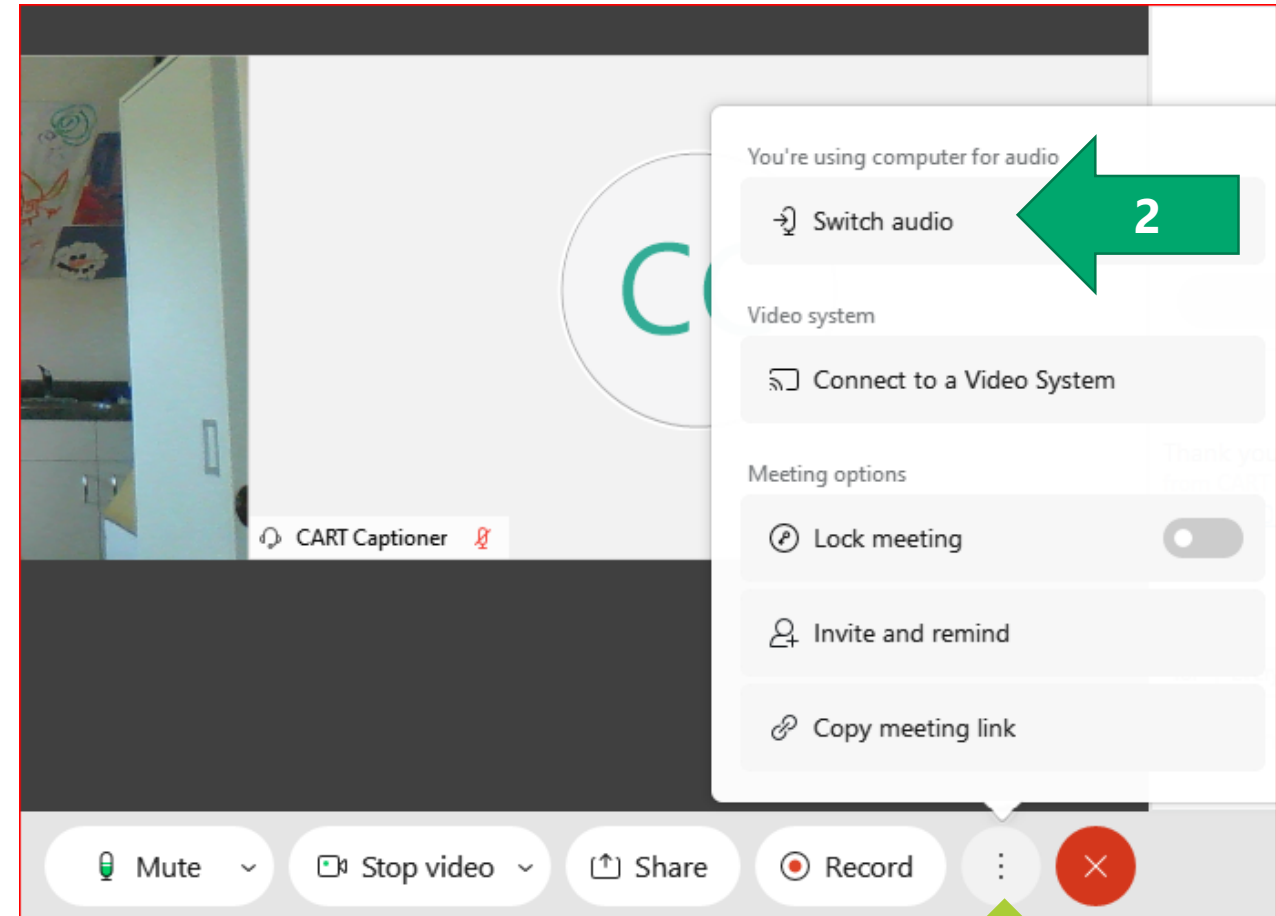
Access Code: **2466 801 4965**

Press *3 to ask a question.



Webex Audio Trouble?

1. Click the **More Options** button at the bottom of the screen 
2. Click **Switch Audio**
3. Use the **Call me at** function
 - a) Enter your phone number
 - b) Webex will call your phone (no long distance charges)



Project Team

CITY OF TORONTO

Parks Forestry and Recreation

Cristian Lukaszyk

Senior Project Coordinator

Mario Pecchia

Program Manager

Pablo Muñoz

Senior Public Consultation Coordinator

DESIGN TEAM

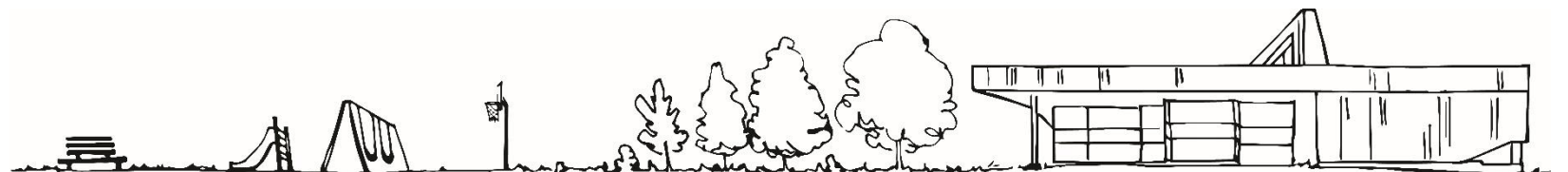
WGD Architects Inc.

Richard Dabrus

Principal

Veronique Allard-Buffet & Sandra Rekker

Architectural Team Leads



Councillor Gary Crawford

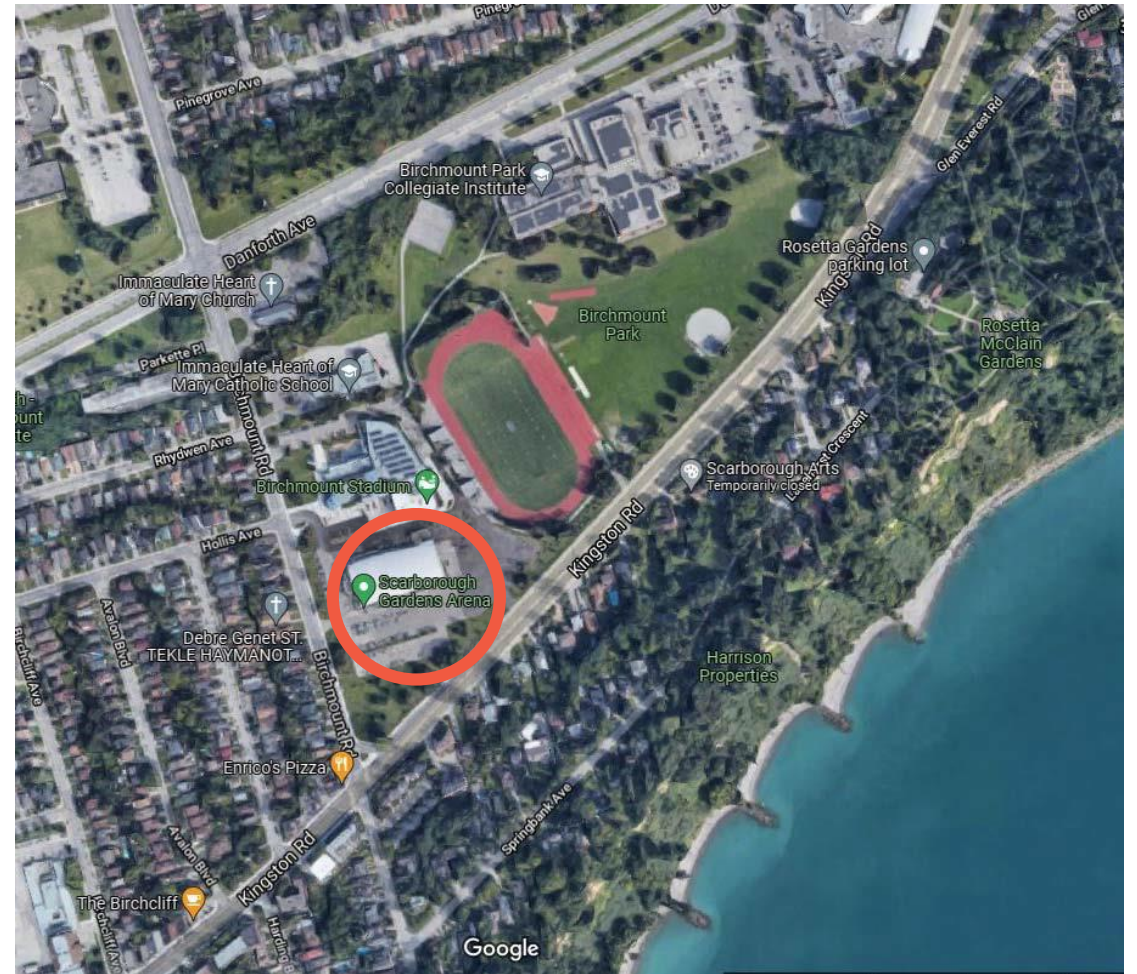
City of Toronto, Ward 20, Scarborough-Southwest



Background

Background

- Located near Birchmount Road and Hollis Avenue, the building is part of Birchmount Community Recreation Centre and Sport Park Complex
- The building was constructed in 1950. The facility houses an indoor ice rink, mechanical and electrical rooms, washrooms, change rooms and office spaces.
- The structure consists of wood bowstring truss system spans across the width of the building.



Background

- Why the initial closure of the facility?
- Why the extended closure of the facility?
- What was installed to support the roof structure?
- Repair or replacement?
- Why the scope has expanded from an initial state of good repair (SOGR) project to a more extensive facility reconstruction?



Recommendation for Scope

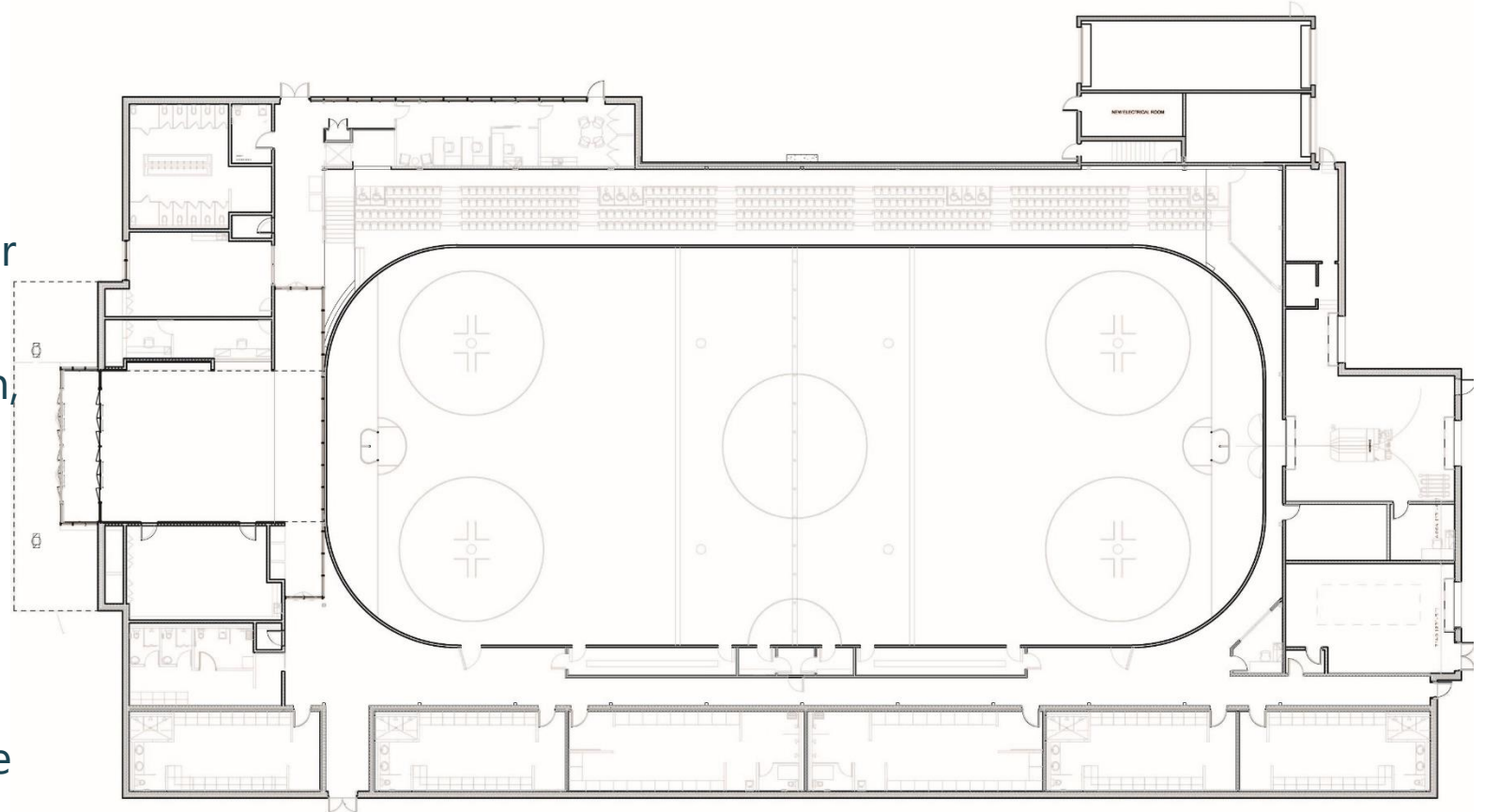
- **Complete replacement of the roof structure**
- **Significant renovation and improvement in the arena facility:**
 - Streamlined layout, new washroom and change room facilities, new community rooms, sledge hockey-ready arena facility, new finishes
 - Accessibility improvements to meet AODA and Toronto Accessibility Design requirements
 - Upgrades to the facility's mechanical and electrical systems to meet the City's Net-Zero mandate to reduce greenhouse gas emissions.
 - City of Toronto has successfully submitted a grant application for funding part of the SOGR and Net-Zero Initiatives costs



Design & Improvements

Proposed Floor Plan

- New foundation and roof structure
- Upgrades to community spaces: lobby and multi-purpose rooms
- A new rink slab and associated dasher boards
- Upgrades to the facility's refrigeration, mechanical and electrical systems
- Accessibility improvements throughout the facility
- Ground floor addition of 473 m² to accommodate six new change rooms (two barrier-free), new referee change room, and new ice plant equipment room.
- Double height lobby



Proposed Floor Plan

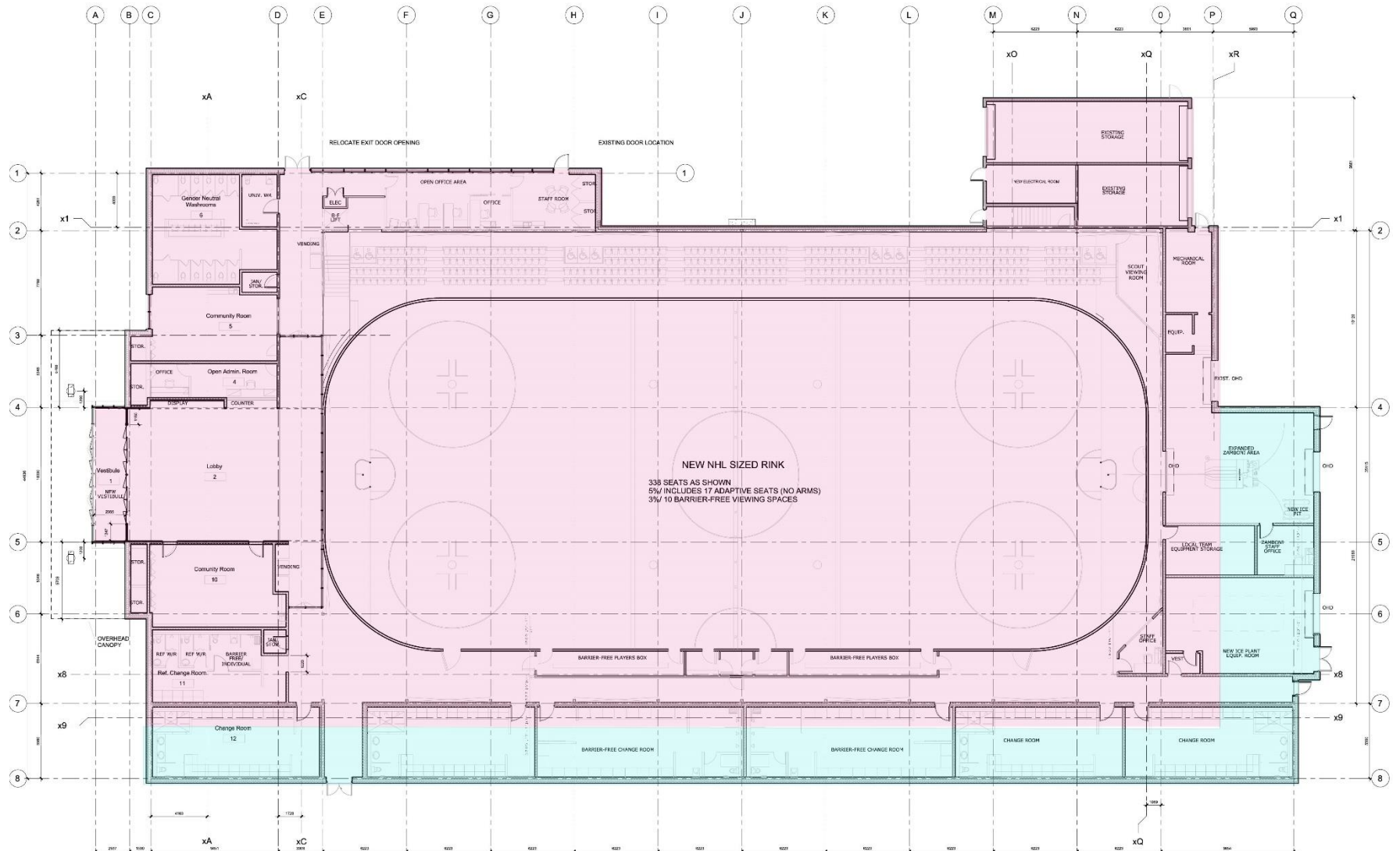


Existing footprint



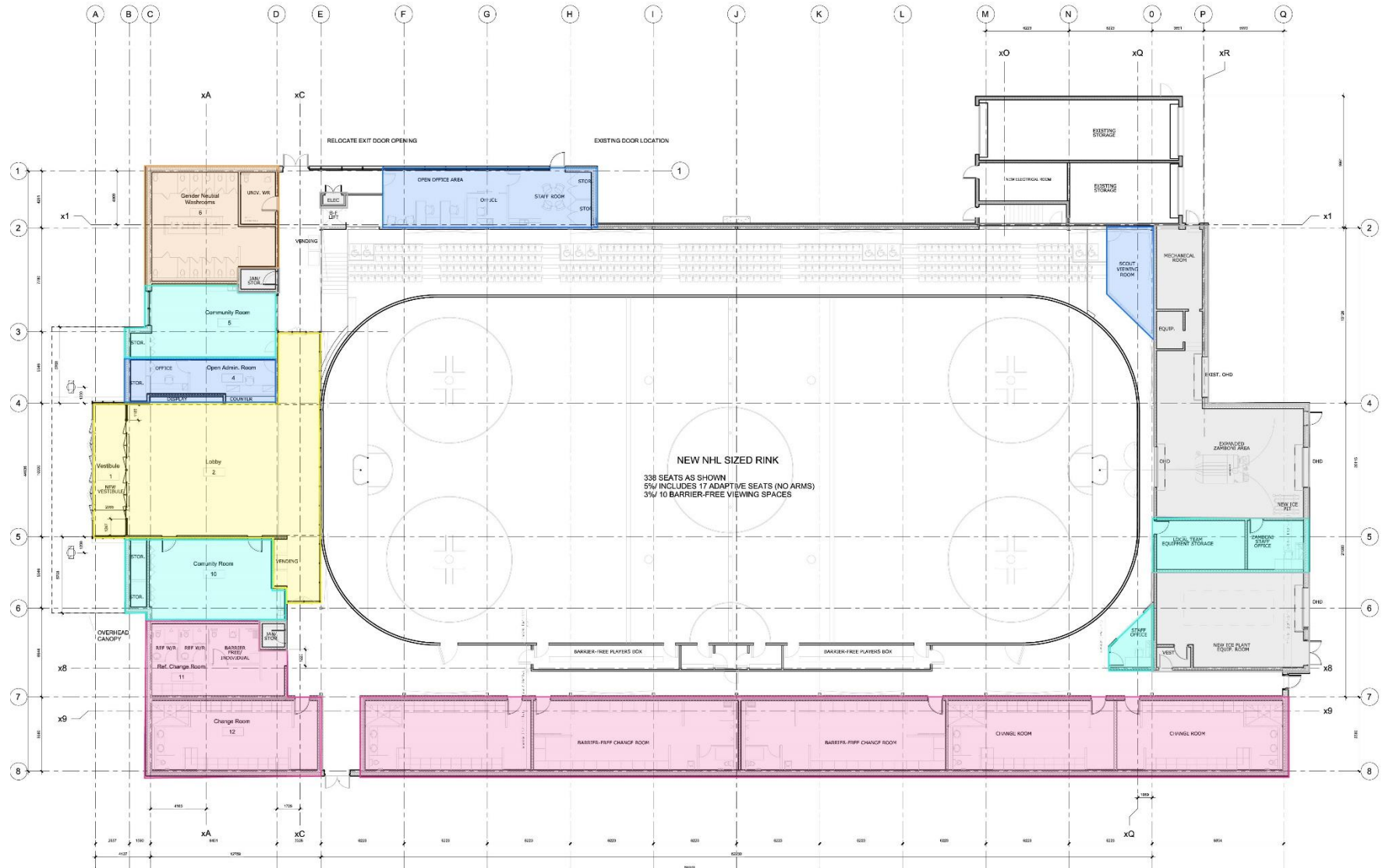
Addition footprint

473m² to accommodate new ice plant equipment room and change room facilities



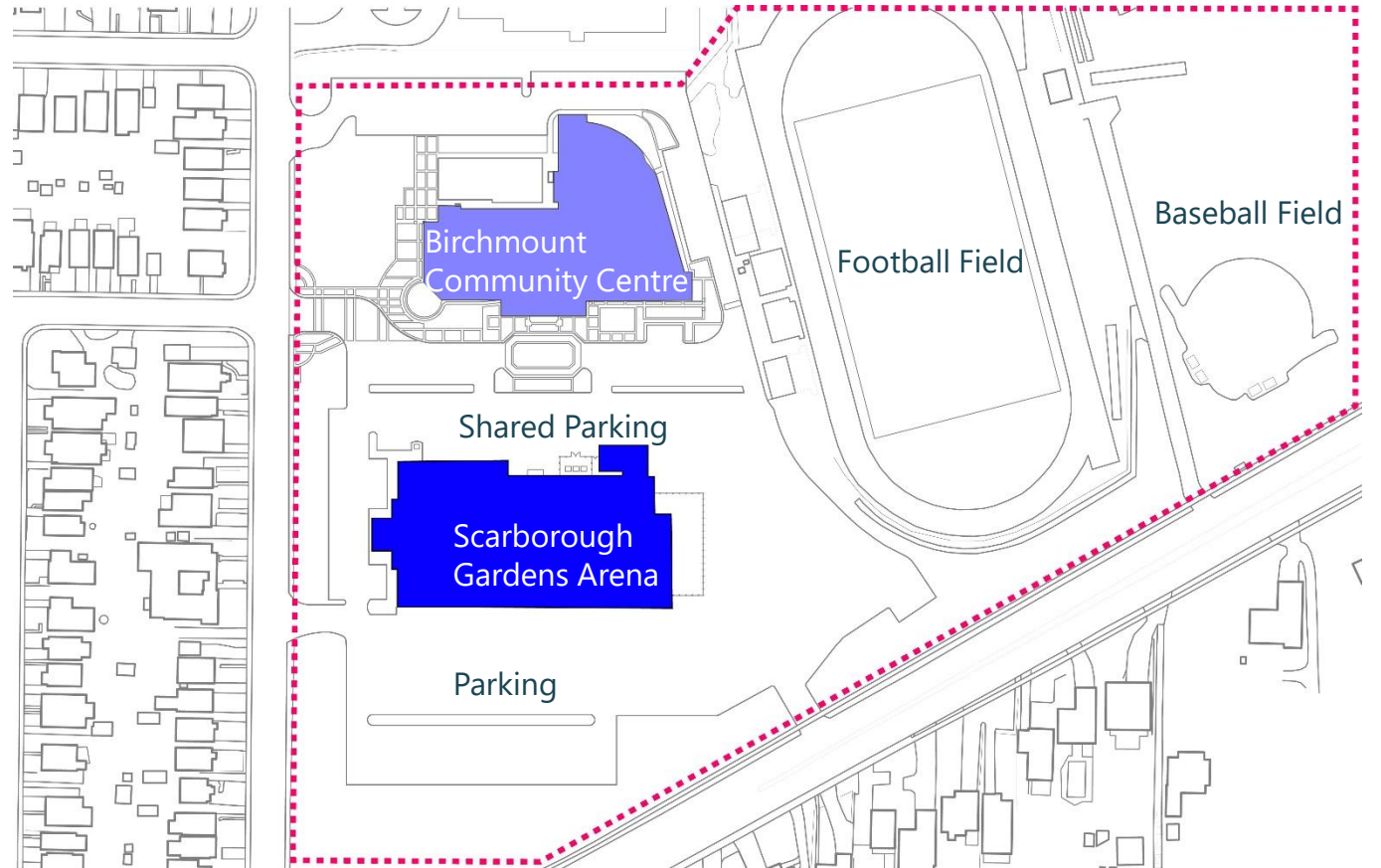
Proposed Floor Plan Zones

- Main Lobby
- Community Rooms & Equipment Rooms
- Office Areas
- New Washrooms
- New Change rooms
- Storage, Service Rooms, Janitor, Refrigeration



Sports Campus Design Approach

- Selection of exterior architectural finishes to compliment adjacent Birchmount Community Centre Addition
- Goal to create a Community / Sports Campus approach where both facilities share stylistic characteristics



LOCATION PLAN

Sports Campus Design Approach

- Birchmount Community Centre Addition completed in 2018 by CS&P Architects
- Monochromatic grey palette
- Streamlined finishes



Sports Campus Design Approach

- Proposed Exterior Finish Palette
- Clean modern aesthetic
- Emphasis on efficient insulated materials
- Incorporated of wood/timber accent to provide warmth and nod to the character of the original SGA truss structure



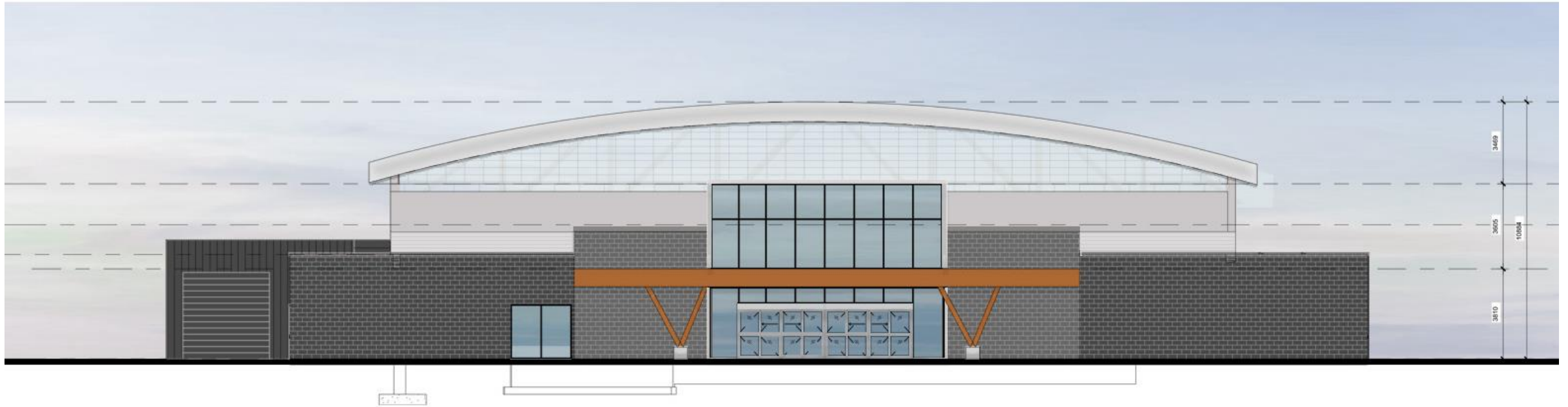
Net-Zero Initiatives

- Increase to target of R43.2 Insulated Metal Wall Assembly and R40/R42 Roof Assembly
- Double pane glazing with thermally broken frame for all glazing
- Air leakage improvements
- Replacement of Mechanical and Electrical Systems for energy efficient alternatives
- Addition of solar panels on single storey perimeter flat roof
- LED lighting for all new fixtures for reduced consumption
- Careful selection of interior finishing which considers selection's embedded carbon footprint
- Maintenance and metering considerations to ensure building continues to function efficiently post-occupancy

*The project teams' goal is to incorporate as many Net-Zero Initiatives as possible.



Proposed Elevations

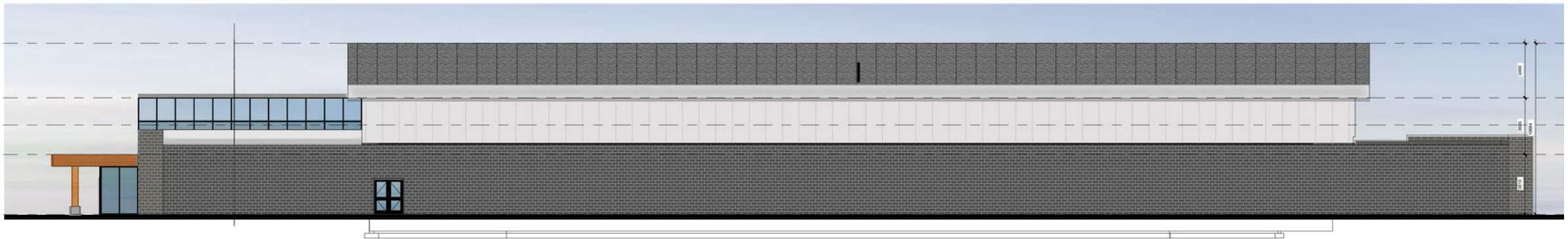


West Facing Elevation | Front Building Facade

Proposed Elevations



North Facing Elevation | Side Building Facade



South Facing Elevation | Side Building Facade

Proposed Renderings



Image 1 | Exterior rendering view of the new Scarborough Gardens Arena driving north up Birchmount Rd.

Proposed Renderings



Image 2 | Exterior rendering view of the new Scarborough Gardens Arena driving south down Birchmount Rd.

Project Timeline



*The timeline is subject to change.

Key Highlights

- Increased ground floor footprint of approximately **14%**
- Increased accessibility to meet City's latest Accessibility Standards
- Sledge hockey ready (players boxes, change rooms and finishes to accommodate)
- New and improved building amenities (washroom facilities, community rooms, change rooms)
- Bright and cohesive architectural finishes throughout
- High standard of environmental targets with Net Zero Goals
- Improved ice quality and rink amenities for end users
- Overall improved user experience and community showcase



Questions of Clarification

HOW TO PARTICIPATE: RAISE YOUR HAND OR USE THE CHAT

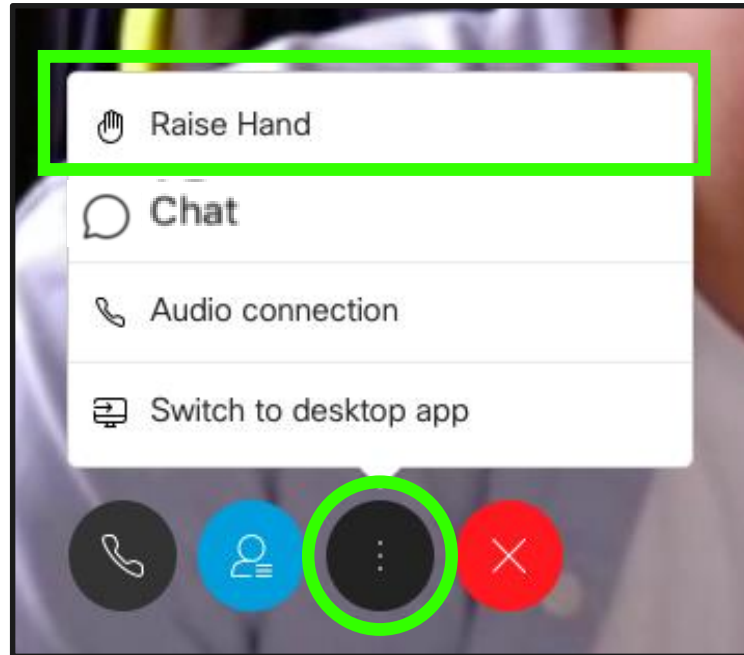
To ask a question and share feedback, you can virtually raise your hand.

IF YOU ARE
USING A
COMPUTER



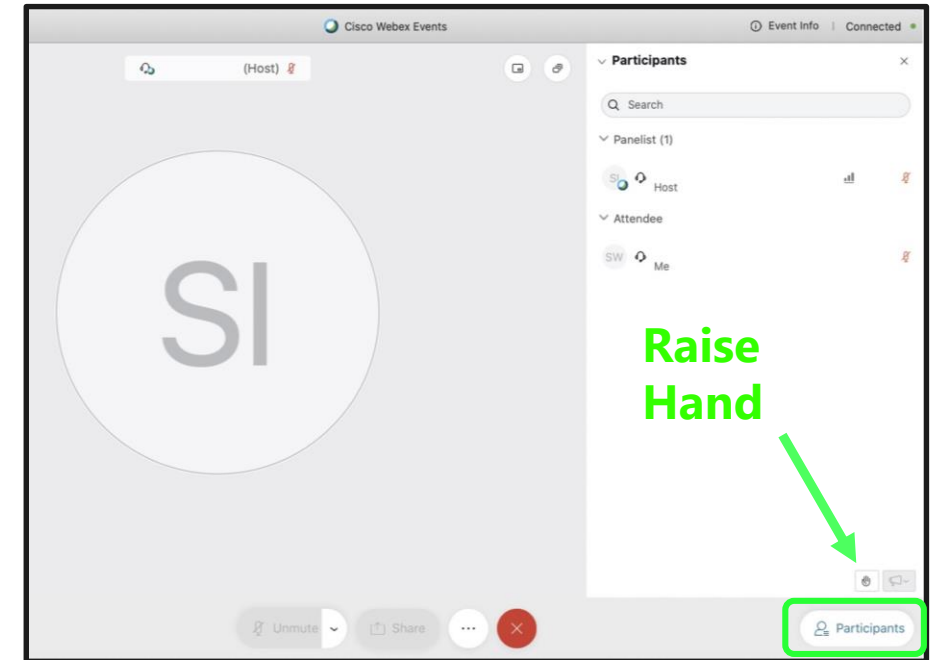
Via the internet browser

Click the "..." button at the bottom of the video window and select "Raise Hand" or "Chat".



Via the Webex App

Click the Participants button at the bottom of the video (the Participants panel will open to the right). Then click the "Raise Hand" or "Chat" button at the bottom right.



HOW TO PARTICIPATE: RAISE YOUR HAND OR USE THE CHAT

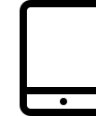
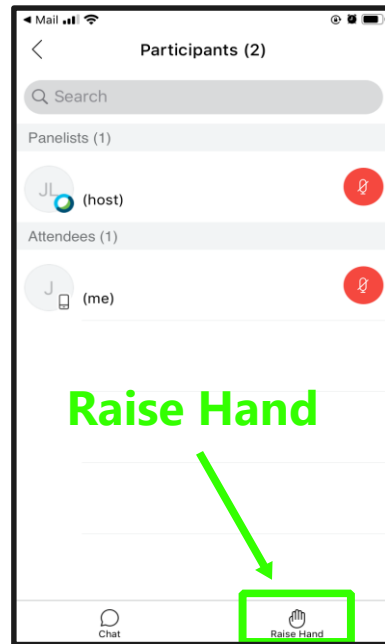
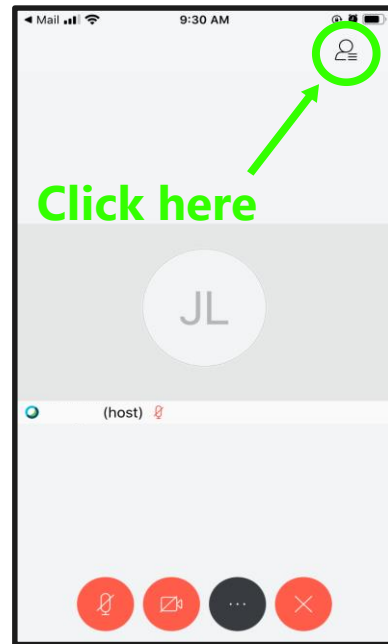
To ask a question and share feedback, you can virtually raise your hand or ask a question in the chat.

IF YOU ARE
USING A
SMARTPHONE
OR TABLET



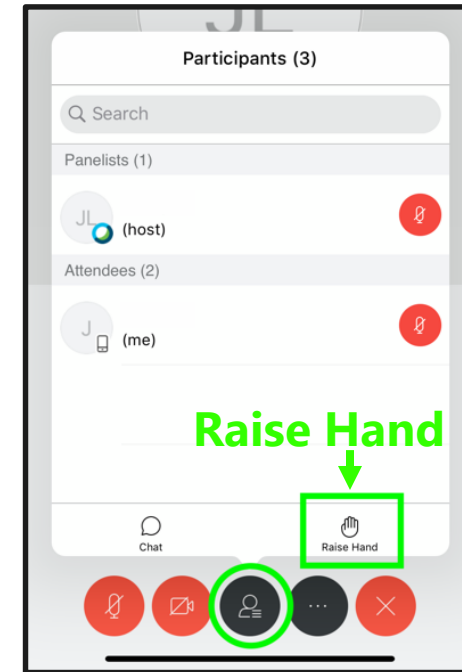
For smartphones

Click the Participants panel button at the top right corner of the screen. Then click "Raise Hand" or "Chat" at the bottom right of the screen.



For tablets

Click the Participants panel button at the bottom of the screen. Then click the "Raise Hand" or "Chat" button at the bottom right.



Next Steps