

# Jane Finch Initiative

## Ideas Booklet:

# Heritage



**This is one of 12 booklets that summarizes the Jane Finch Initiative Ideas Report. Booklet topics:**



- Arts & Culture
- Climate action
- Community Service Facilities
- Heritage
- Housing
- Inclusive employment opportunities
- Inclusive entrepreneurship opportunities
- Land use, built form, and urban design
- Mobility: getting around
- Parks & public spaces
- Resources, partnerships and governance
- Social development

**The Jane Finch Initiative is a resident-informed project to plan for the future of the area- so that residents, local groups and businesses are supported as the area changes over time with the opening of the Finch West Light Rail Transit.**

# Heritage

**Vision for the future: The diverse cultural heritage resources of communities in Jane and Finch are recognized, conserved and celebrated as vital contributors to a sense of place, economic prosperity, and healthy and equitable communities.**

Cultural heritage can take many forms, including oral histories, art, music, festivals and vigils, as well as buildings, structures, monuments, and geographic areas. Cultural heritage can enrich us, inspire us and guide us forward to build vibrant, liveable communities for future generations. The Jane Finch Initiative includes developing an understanding of the cultural heritage of Jane Finch communities, and integrating that cultural heritage into plans for the future. The primary tool to understand cultural heritage resources is a Cultural Heritage Resource Assessment (CHRA), currently being conducted by the City.

The Official Plan speaks to the importance of the City's cultural heritage resources, including buildings and landscapes, and contains policies related to its conservation. Going beyond the identification of properties, the Jane Finch CHRA will also consider heritage resources that may not be tied to a specific place. To date, City staff have heard from the community about the value of cultural diversity to the identity and heritage of Jane and Finch. Staff have also heard about the importance of public institutions and safe spaces such as libraries and schools, sites of vigils and annual commemorative events, community advocacy, and the arts.

## **1. Conserve significant buildings and landscapes that reflect the cultural heritage values and histories of Jane and Finch's communities.**

Heritage properties can be valued on the basis of their tangible qualities, such as their design or contribution to a streetscape, and as vessels of intangible qualities, such as places of gathering and cultural activity. Residents of Jane and Finch have, and will continue to, provide insight into places that represent community history and identity, such as apartment towers, community housing, schools, community centres, restaurants, and green spaces.

### Ideas

- Properties identified as having potential cultural heritage value will be considered, through further evaluation, for inclusion on the municipal Heritage Register.
- Properties designated under the Ontario Heritage Act (Part IV and Part V) will be conserved and maintained, and considered as cultural assets within Jane and Finch.
- Explore site-specific approaches for properties on the Heritage Register to address their unique characteristics and conserve their cultural heritage value.
- Important views and landscapes within Jane and Finch that are important to its sense of place will be identified and protected.
- The adaptive reuse of heritage buildings for civic and cultural uses will be encouraged.

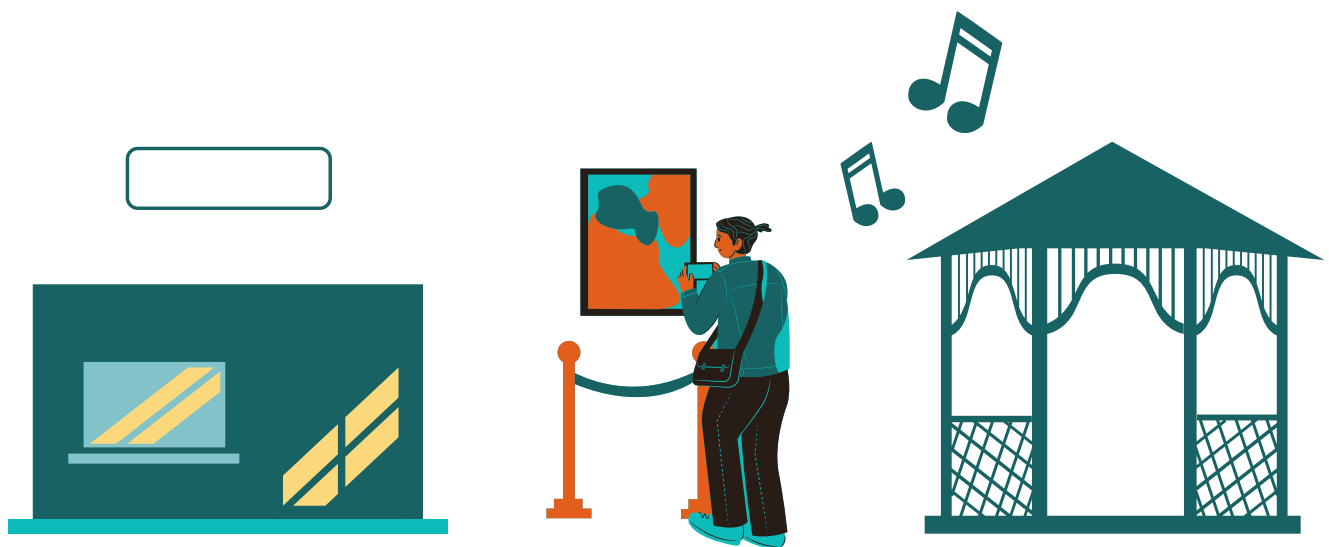
*For more on this topic, read the full Jane Finch Initiative Ideas Report at [www.toronto.ca/janefinch](http://www.toronto.ca/janefinch)*

## 2. Ensure that the cultural heritage of communities in Jane and Finch informs and enhances plans for the future.

Consideration of an area's historic evolution and cultural heritage values is an integral part of the planning process. Community members have shared the histories of informal gathering spaces in Jane and Finch, such as basketball courts and parking lots that have been used for community organization, activism, and vigils. They have spoken about the cultural importance of parks and open spaces; landscapes of sport and recreation, such as cricket pitches, are valued sites for connecting and building social capital. Community murals in the area are a significant medium for expressing culture and creativity. While the Ontario Heritage Act enables the conservation of tangible elements of buildings and landscapes with cultural heritage value, the Jane Finch Initiative will explore additional tools for supporting and enhancing the cultural heritage of the area that is important to communities.

### Ideas

- Understanding and consideration of Jane and Finch's cultural heritage will be interwoven throughout the Jane Finch Initiative.
- Public art and installations that are important to the community should be conserved.
- D8. Future public art and installations should continue to consider and support the specific values of Jane and Finch's communities, as reflected, in part, by the results of the CHRA.
- Identify opportunities to support businesses, organizations, events, and activities that contribute to the area's heritage and cultural identities.



# Jane Finch Initiative

## Ideas Booklet: Heritage



**We want to hear what you think of these ideas – are we on the right track? What's missing? What could be better?**



Send us an email us at [janefinch@toronto.ca](mailto:janefinch@toronto.ca).



Find out more about the Jane Finch Initiative at [toronto.ca/janefinch](https://toronto.ca/janefinch), or scan the QR code below.



Give us a call at 416-338-0775.

