

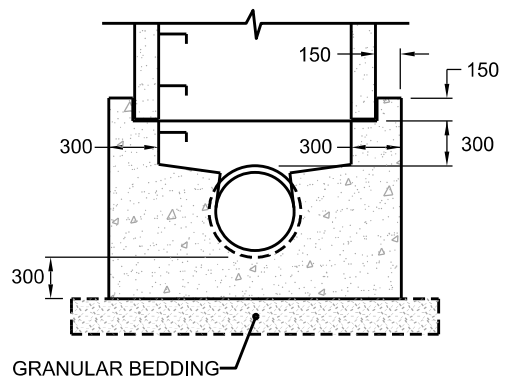
NOTES:

1. FOR SUMP DETAIL SEE T-701.010.
2. 300 mm OF COMPACTED GRANULAR A TO BE PLACED ALL AROUND THE MAINTENANCE HOLE.
3. PRECAST CONCRETE COMPONENTS ACCORDING TO OPSD 701.060, OPSD 701.061, OPSD 703.013 AND OPSD 703.023.
4. STRUCTURES EXCEEDING 5.0 m IN DEPTH TO INCLUDE SAFETY PLATFORM ACCORDING TO OPSD 404.020.
5. PIPE SUPPORT ACCORDING TO T-708.020.
6. FOR BENCHING DETAILS, MAXIMUM PIPE HOLE DIAMETERS AND FLOW CONFIGURATIONS, SEE T-701.021.
7. ALL DIMENSIONS ARE NOMINAL.

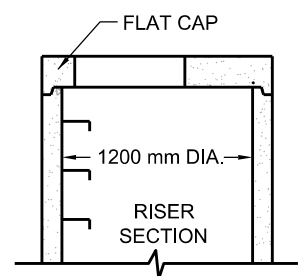
8. PARGING SHALL BE 1:3 MORTAR MIX.
9. WATERPROOFING OVER PARGING TO BE TWO HEAVY COATS OF BITUMEN.
10. WHERE PIPES JOIN AT MAINTENANCE HOLE, JOINTS ARE TO BE WATERTIGHT WITH THE APPROVED SEAL.
11. FIRST STEP TO BE 75 mm TO 300 mm BELOW FRAME, LAST STEP TO BE 300 mm ABOVE BENCHING OR 600 mm ABOVE INVERT IF NO BENCHING.

All dimensions are in millimetres unless otherwise shown.

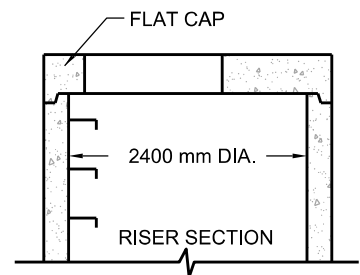
ALTERNATIVES
A CAST IN PLACE BASE



B 1200 mm PRECAST FLAT CAP



C 2400 mm PRECAST FLAT CAP



ENGINEERING & CONSTRUCTION SERVICES STANDARD DRAWING

REV 5 SEP 2022

PRECAST MAINTENANCE HOLE
2400 mm DIAMETER

T-701.013

NTS SHEET 1