

October 11, 2022

Gerrard East Complete Street

The City is planning changes on Gerrard Street East between Sherbourne Street and Parliament Street as part of scheduled 2023 road reconstruction and to fulfill the City’s commitment to the [Vision Zero Road Safety Plan](#). The City is also exploring changes to Gerrard Street East between Parliament Street and Blackburn Street, as part of the on-going redevelopment of Regent Park. More information on the project can be found at toronto.ca/gerrardeast.

With both road reconstruction between Sherbourne Street and Parliament Street and private redevelopment efforts in Regent Park, there is a unique opportunity to upgrade the roadway, improve the streetscape and create a safer cycling connection while adding enhancements to the public realm.

Consultation with the public and stakeholders was carried out to introduce the project and receive feedback on preliminary designs. On May 5, 2022, City staff presented design options to local stakeholders and recorded feedback. A public consultation event was held on May 17, 2022, where the project was introduced to the public with opportunities for feedback on proposed changes and options in each segment of the project area through various channels, including public surveys, question and answer segments and contact to the project team. Additionally, an on-site meeting was held with businesses on Gerrard Street East between Ontario Street and Berkeley Street on June 3, 2022. Although City Council [approved](#) the project in May 2022, based on feedback received through the consultation process, the preliminary design has been adjusted.

What We Heard	Design Changes
<p>There is concern about the removal of street parking on Gerrard Street East, specifically its impact on the local businesses and accessible parking opportunities.</p>	<p>A general lay-by for loading and parking is planned on the south side of Gerrard Street East, between Ontario Street and Berkeley Street, with eight parking spaces. This maintains the existing number of parking spaces for this section of the corridor. There is potential for two dedicated accessible parking spaces at Ontario Street and at Berkeley Street south of Gerrard St East. There is also potential for the interim cycle track on the north side to be converted to on-street parking or space for street trees in the future when the connection of the two-way cycle track to the Regent Park Development is complete.</p>
<p>There is a need for greater loading capacity along the proposed corridor, specifically between Ontario Street and Berkeley Street where the businesses do not have access to back or side loading.</p>	<p>A general lay-by for loading and parking is planned on the south side of Gerrard Street East between Ontario Street and Berkeley Street. Approximately one-third of the lay-by will be dedicated to loading. Refer to photo #1 on page 2 of this update.</p>
<p>There were inquiries into the need for a two-way cycle track instead of continuing one-way cycle tracks east of Sherbourne Street (similar to the existing cycling facilities west of Sherbourne Street).</p>	<p>The two-way cycle track is planned and being placed on the south side of this corridor to be consistent with the future two-way cycling facility proposed with the Regent Park Redevelopment east of Parliament Street, which would be difficult to modify given the constraints of the streetcar tracks east of Parliament Street. The design also allows for the transition from one-way cycle tracks (west of Sherbourne Street) to the two-way cycle track at Sherbourne Street. This is a safer approach than transitioning people cycling at Parliament Street, where there are TTC streetcar tracks and the crossing distance is greater.</p>
<p>There are several planned developments** in the area, in addition to planned watermain replacement by the City, which may cause significant disruption in this area over several years. This project should be coordinated with all other construction projects in the area to ensure the impact is lessened.</p>	<p>Coordination with developments in the vicinity of this corridor has been ongoing throughout the design process. It is anticipated that the watermain replacement work will begin in 2023 along with this reconstruction project, also planned for 2023.</p> <p>**Developments the city is coordinating with include, but are not limited to: 365 Parliament Street (Blocks 1, 4 & 5 in Regent Park), 307 Sherbourne Street and</p>

	<p>227 Gerrard Street East. Photo #2 on page 3 of this update indicates the location of developments.</p>
<p>There were mixed levels of support for removal of left turn lanes at Sherbourne Street. Approximately 71% of survey respondents supported or strongly supported the design option with removal of the left turn lanes. However, comments and input received at the public meeting and stakeholder meeting reflected strong concerns with potential traffic congestion and travel time impacts for TTC vehicles.</p>	<p>Staff reviewed all options (survey respondents and stakeholder comments) and in an effort to help maintain north-south left turns, which are important to minimize impacts on TTC operations, a hybrid design has been developed. This design proposes that the left turn lanes be removed on Gerrard Street East, but maintained on Sherbourne Street, as shown in photo # 3 on page 3 of this update.</p>
<p>There are concerns that the removal of left turn lanes at both Gerrard Street East/Sherbourne Street and Gerrard Street East/Ontario Street will cause further traffic congestion and impact emergency vehicles that need to use this corridor.</p>	<ul style="list-style-type: none"> - A thorough traffic analysis has been completed to determine the impact of the removal of left turn lanes on this corridor. - All intersections in the corridor will be designed within the allowable traffic threshold limits to maintain acceptable traffic operations and accommodate emergency vehicles.
<p>Through stakeholder discussions the need for a loading area at 306 Gerrard Street, Yonge Street Mission (YSM) was identified to accommodate numerous passenger pick-up and drop-off activities at this site.</p>	<ul style="list-style-type: none"> - Wheel-Trans to use the newly planned lay-by for dropping off/picking up in front of the building on Gerrard Street East. - City staff are looking at adding on-street short-term parking on Gerrard Street East along the north side of Anniversary Park to accommodate pick-up and drop-off needs at the YSM. Parking locations on nearby side streets can also be used for passenger pick-up and drop-off.

Next Steps

- Current schedule for construction is on track to commence in 2023 and to be completed in 2024.

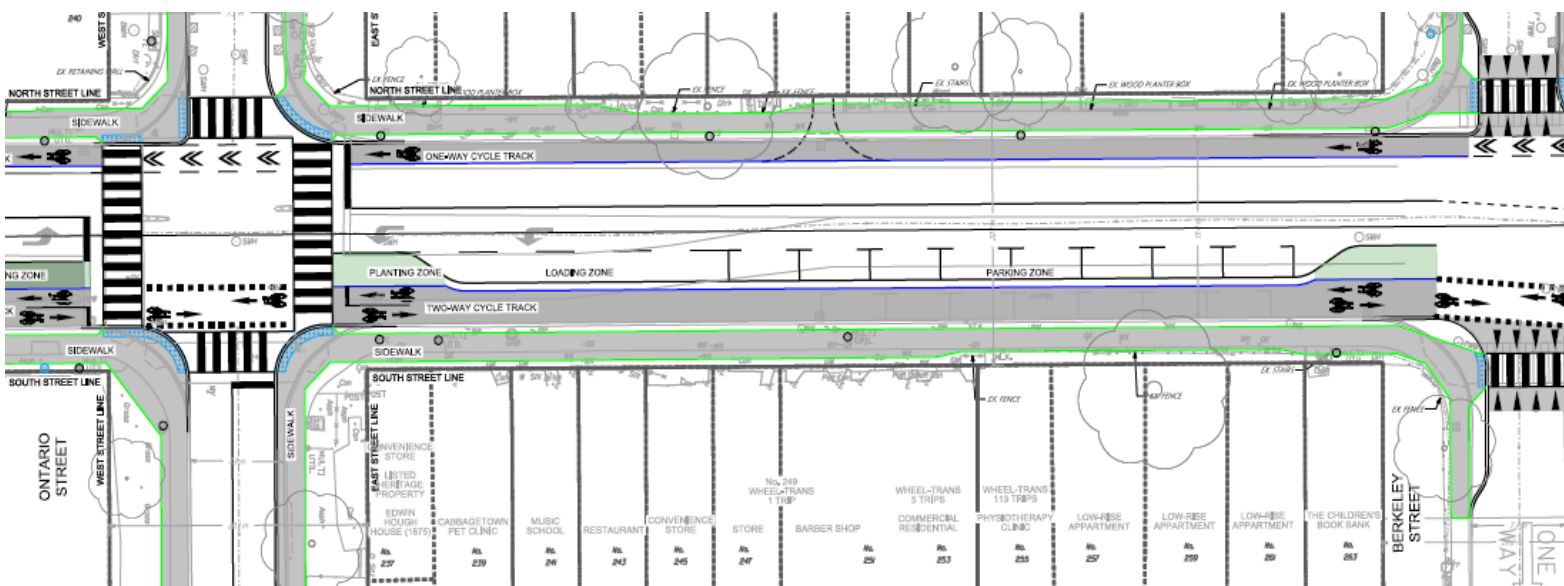


Photo #1 illustrates planned general lay-by for loading and parking on the south side of Gerrard Street East between Ontario Street and Berkeley Street.

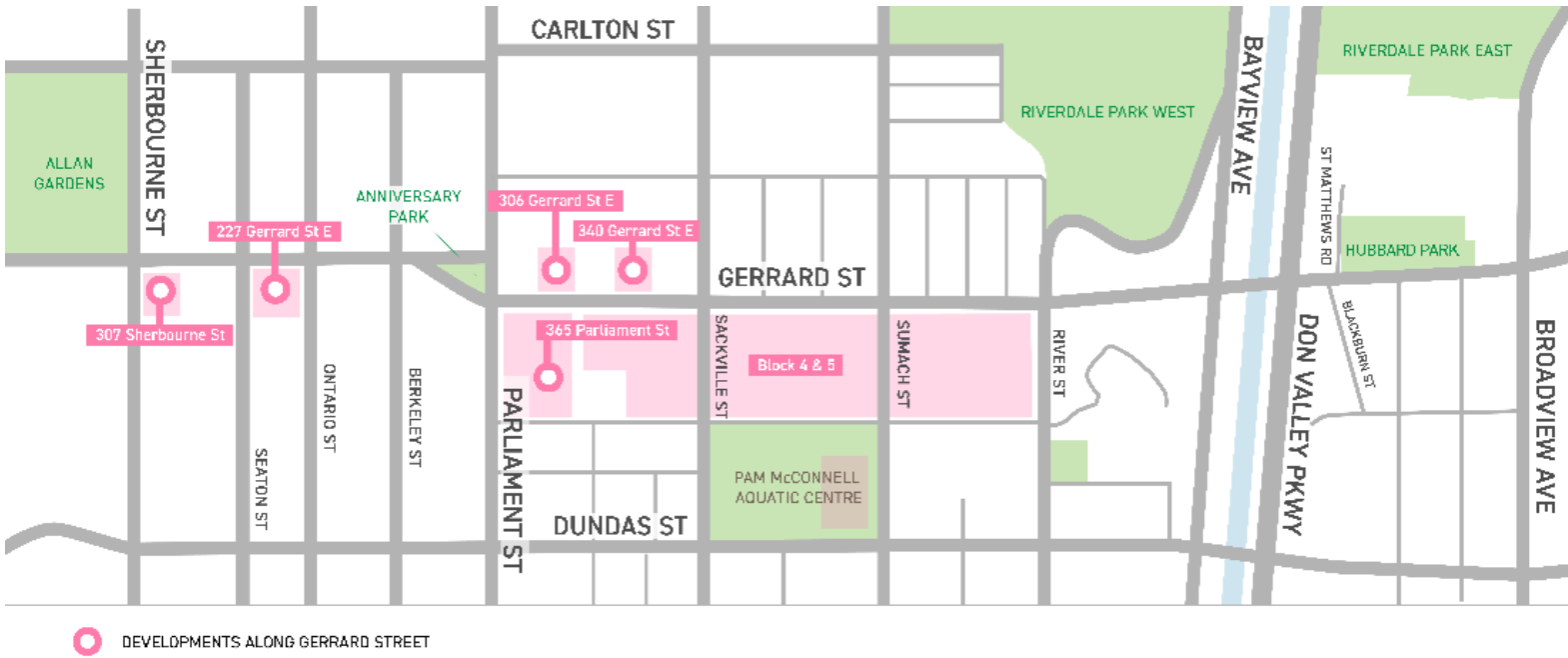


Photo #2 illustrates the locations of developments in the project area, including the planned Regent Park Redevelopment.

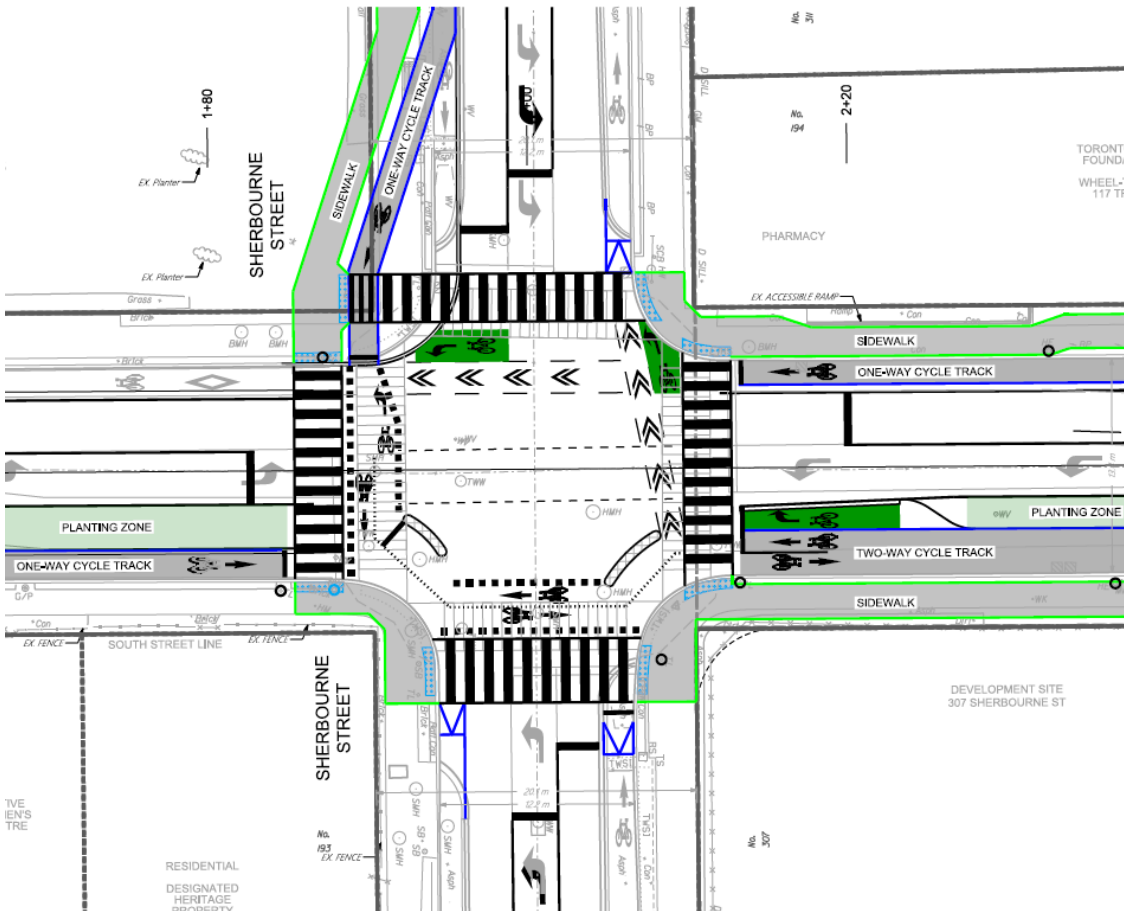


Photo #3 illustrates the new changes regarding turn lanes at the Gerrard Street and Sherbourne Street intersection. Left turn lanes will be removed on Gerrard Street East, but maintained on Sherbourne Street.