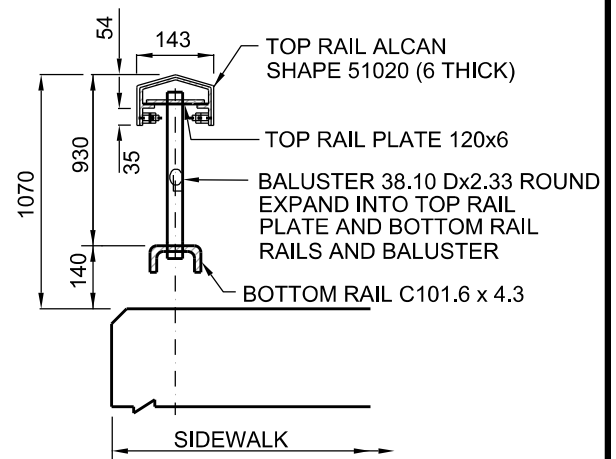
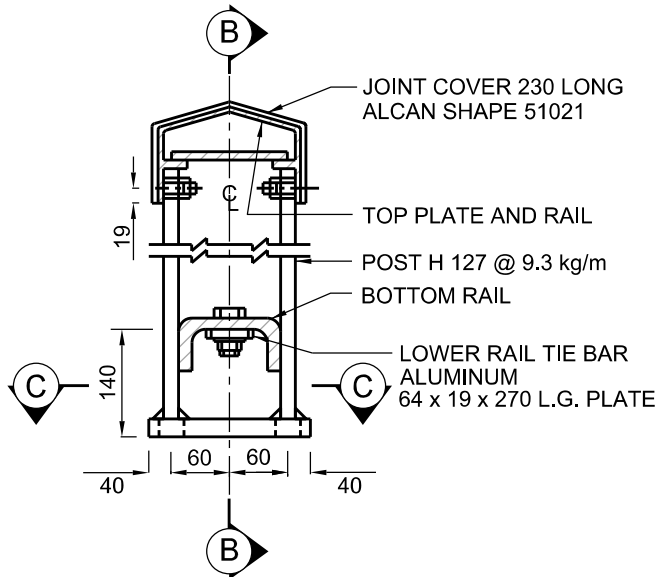


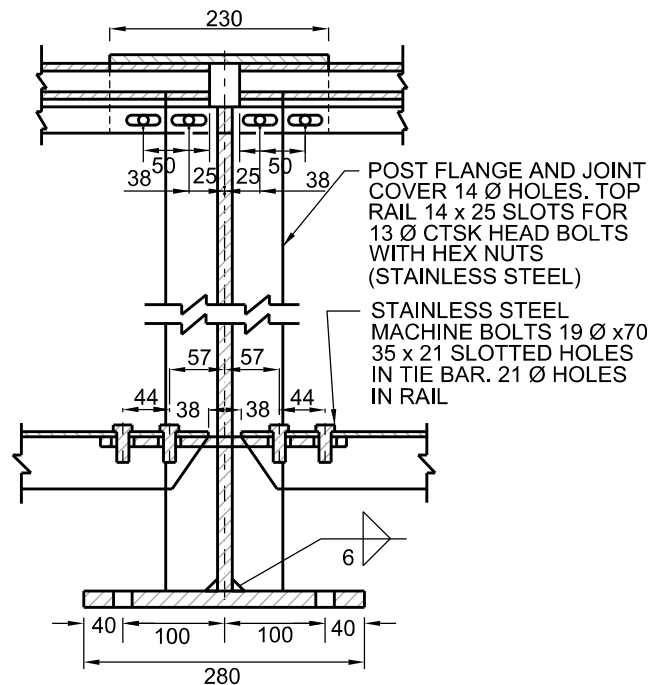
PANEL ELEVATION



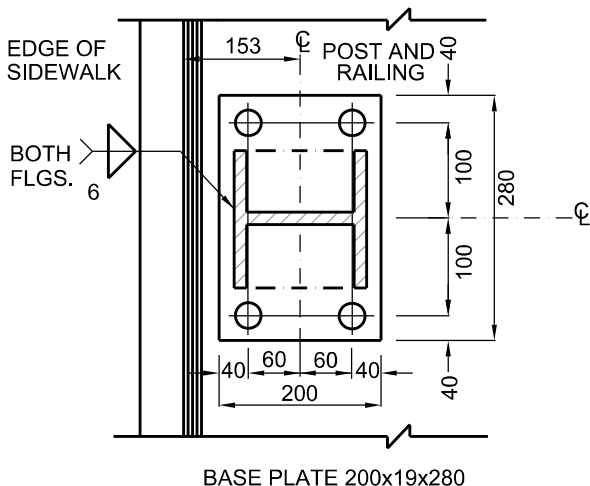
SECTION A - A



POST DETAIL



SECTION B - B



SECTION C - C

NOTES:

1. AN APPROVED PREFABRICATED ANCHORAGE ASSEMBLY SHALL BE USED.
2. PAINT BOTTOM OF BASE PLATE WITH ASPHALTIC MASTIC.
3. POST AND BALUSTERS TO BE VERTICAL. TOP AND BOTTOM RAILS TO BE PARALLEL TO TOP OF CONCRETE.
4. GUARD TO BE NON-CLIMBABLE BETWEEN 140 AND 900 FROM PROTECTED SURFACE AND SHALL HAVE NO OPENINGS GREATER THAN 100 IN ANY DIRECTION

MATERIAL	USE	SPECIFICATION
ALUMINUM - EXTRUDED SHAPES	POST AND RAILS	6351-T6 OR 6061-T6
ALUMINUM - TUBING	BALUSTERS	6351-T6 OR 6061-T6
ALUMINUM - SHEET AND PLATE	TOP BASE AND TIE PLATES	6351-T6 OR 6061-T6
STAINLESS STEEL TYPE 304	BOLTS	ASTM F593
	NUTS AND WASHERS	ASTM F594

All dimensions are in millimetres unless otherwise shown.



ENGINEERING & CONSTRUCTION SERVICES STANDARD DRAWING

**STANDARD ALUMINUM RAILING FOR
SIDEWALKS AND WALLS WITHOUT CONCRETE PARAPETS**

REV 2

SEP 2022

T-900.01-3

NTS

SHEET 1