



ROSEDALE VALLEY ROAD MULTI-USE TRAIL

Transportation Services, Project Design and Management Section

November 2nd, 2022

Rosedale Valley Multi-Use Trail Overview

Rosedale Valley Road MUT Overview



- The existing trail extends from Bayview Avenue to Park Road
- It is mostly located adjacent to the roadway within Rosedale Ravine lands. It is built alongside of and connects the St. James Cemetery, Wellesley Park, Toronto Necropolis Park, Rekai Family Parkette, and Lawren Harris Park



Study Area Context

Rosedale Valley Road MUT Overview



- Rosedale Valley Road MUT has been selected as part of the City's Transportation Capital Program, State of Good Repair (SOGR) to extend the useful life and improve the user experience by repairing, resurfacing, and upgrading the trail
- This trail is one of a number of trail projects in the City's Cycling Network Plan that will to help make green spaces more accessible
- The City has partnered with the Toronto and Region Conservation Authority for the design and delivery of the trail upgrades



Rosedale Valley MUT- Facing East

Rosedale Valley Road MUT- Issues



Steep slopes and narrow trail



Grade differences



No trail lighting

Rosedale Valley Road MUT- Issues



Narrow Buffers



Nature erosion



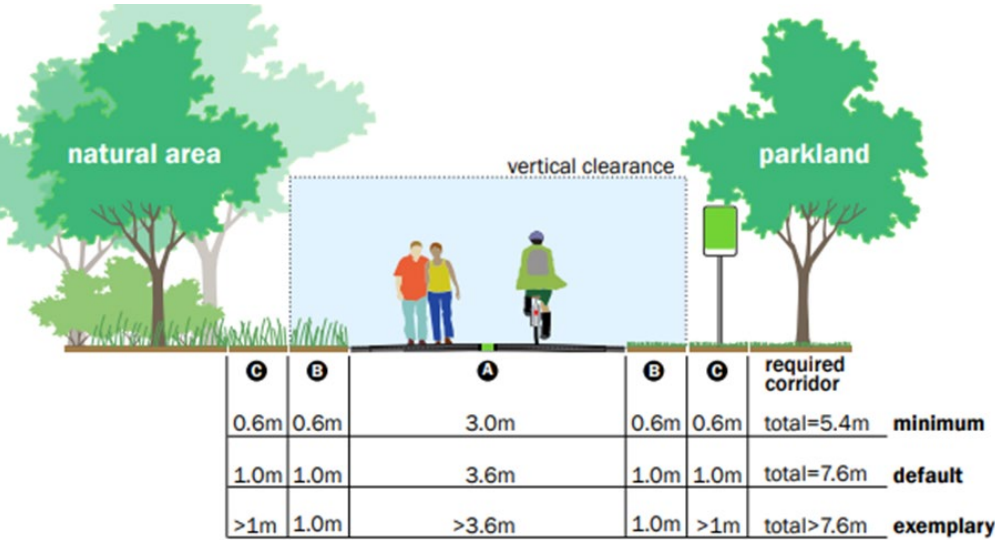
Uneven and damaged surfaces

Rosedale Valley Multi-Use Trail Proposed Design & Details

Rosedale Valley MUT Proposed Improvements



- Widen the trail to meet the minimum/default standard width as per Toronto's Multi-Use Trail Guidelines with the minimum 3m width and 0.6m lateral clearance.



Existing conditions of MUT



Rosedale Valley MUT Proposed Improvements



- Modify/smoothen the trail profile by removing any unnecessary vertical curves
- Maintain at least a 1.5m space from the roadway curb to the edge of trail. In very constrained locations, 0.8m in short segments and physical separation could be considered



Trail elevation from roadway

Respite Areas



- Create respite areas at frequent intervals
 - Park Road
 - Under Mt Pleasant Bridge
 - Under Bloor Bridge
 - Bayview Avenue
- Opportunities to incorporate public art and lighting, seating, wayfinding information and enhance the sense of place

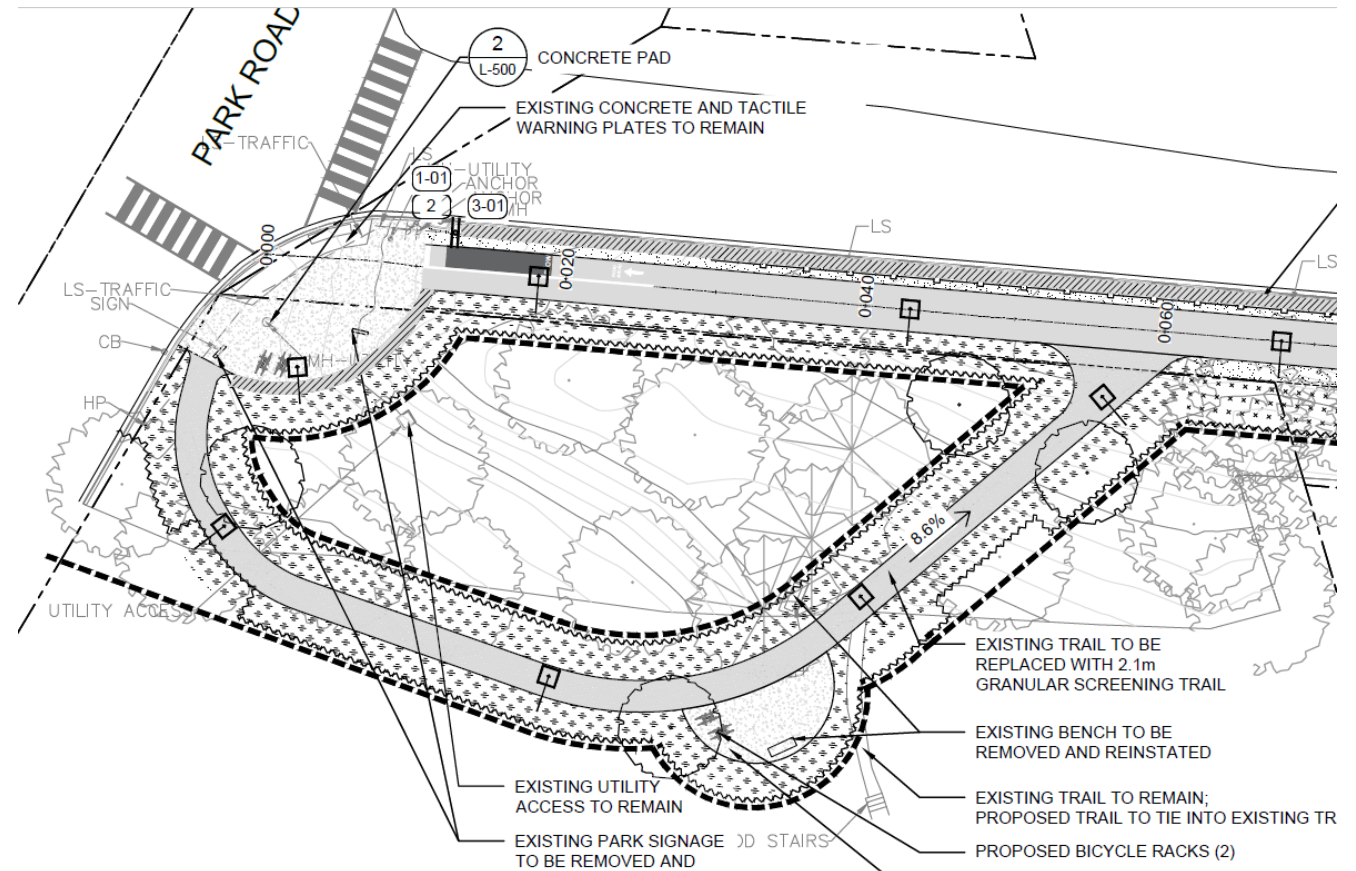


Artists rendering under Mt Pleasant bridge

Park Road Trailhead



- Improve trailhead at Park Road and Rosedale Valley Road
- Formalize pathway through Hazeldean park
- Provide seating area and wayfinding
- Incorporate lighting
- Provide bike parking



Proposed configuration at Park Rd Trailhead

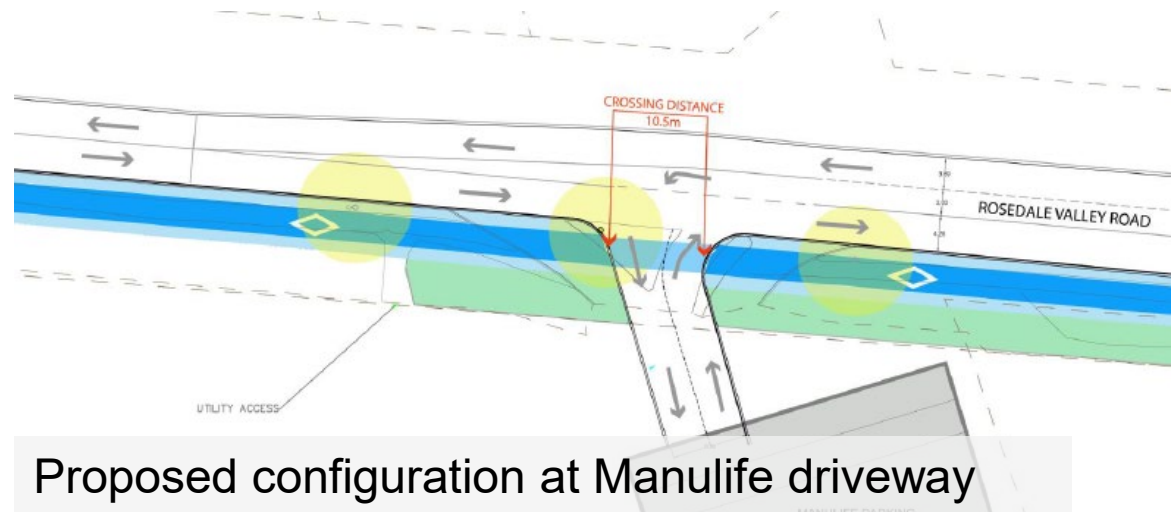
Manulife Driveway



- Modifications proposed at the intersection of Rosedale Valley Road and the driveway entrance of the Manulife Building
- Currently the crossing distance is approximately 30 metres long
- Eliminate right turn channel
- Reduce crossing distance
- Reduce turning radius which will result in reduced driving speeds



Existing conditions at Manulife driveway



Proposed configuration at Manulife driveway

St James Cemetery



- Additional access points to the Ravine and the Rosedale Valley MUT are an important consideration
- Ongoing conversations with the Cemetery managers to open the gates on Rosedale Valley Road and provide connection through cemetery to Parliament Street



Existing locked gate at St James Cemetery

Wellesley Park Connection



- Ongoing City of Toronto/TRCA project to improve the connection between Rosedale Valley Road and Wellesley Park
- A new trail connection that improves accessibility, connectivity, safety, and user experience for pedestrians and people cycling traversing this area
- Target to have a public information session early next year



Existing Staircase to Wellesley Park

Bayview Intersection



- Improve connection of Rosedale Valley Road Multi Use Trail with Bayview Trail
- Widen the trail landing space
- Relocate the signal box
- Build curb bump out at the northwest corner
- Create seating space and bike parking



Lighting



- Pedestrian scale lighting will be incorporated throughout the trail and the resting areas
- 6.1m (20 ft) stand-alone concrete poles are proposed spaced approximately 20m apart



Example of pedestrian scale lighting

- New trees, shrubs and perennials will be planted along the trail
- Trees will be planted along the trail, where feasible, to mitigate erosion, compensate tree removals and create a more welcoming trail experience
- Native tree species
 - Hackberry (*Celtis occidentalis*)
 - White Oak (*Quercus alba*)
 - Silver Maple (*Acer saccharinum*)
 - Sugar Maple (*Acer saccharum*)
 - Shagbark Hickory (*Carya ovata*)
 - Basswood (*Tilia americana*)
 - Ironwood (*Ostrya virginiana*)



Silver Maple



Hackberry

- Shrubs
 - Serviceberry (*Amelanchier canadensis*)
 - Dogwood (*Cornus racemosa*)
 - Common Witchhazel (*Corylus americana*)
 - White Snowberry (*Symphoricarpos albus*)
 - Wild Red Raspberry (*Rubus ideaus*)
 - Nannyberry (*Viburnum lentago*)
- Perennials
 - Black-eyed Susan (*Rudbeckia hirta*)
 - Hoary vervain (*Verbena stricta*)
 - Wild Bergamot (*Monarda fistulosa*)
 - Wild Geranium (*Geranium maculatum*)



Design Details



- Where retaining walls are required the recommended material is armourstone
- Armourstone has an aesthetic quality that blends with the valley landscape, has low carbon footprint, and is easy to install



Example of armourstone retaining wall

Design Details



- Where railing is required due to trail elevation from the roadway, wood posts with weathering steel railings will be used



Example of trail railing

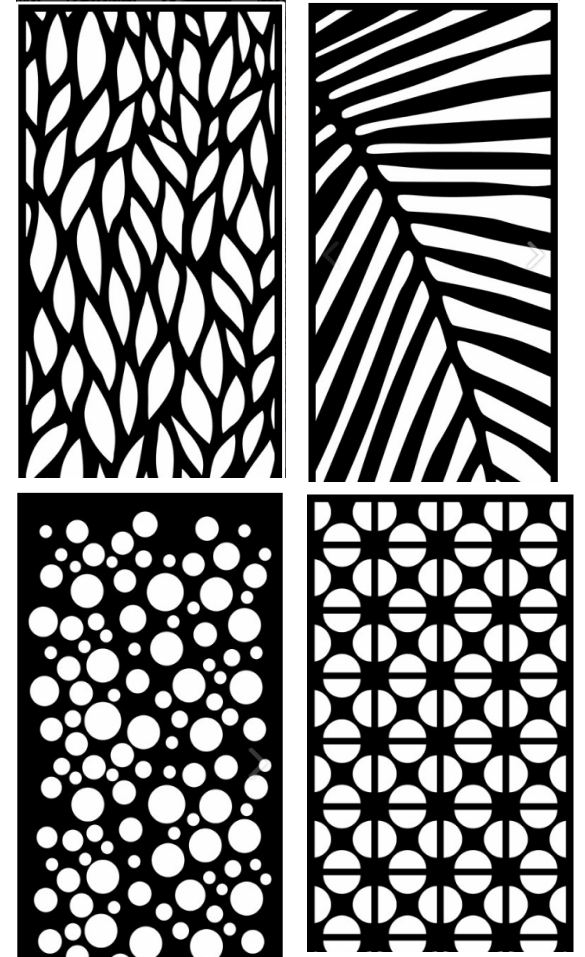
Incorporating Art



- Consideration to incorporate art along the upgraded MUT
- Opportunities to incorporate public art/screening and lighting to enhance the sense of place created by the bridge structures
- Safety and sufficient lighting are considerations



Existing conditions under Mt Pleasant bridge



Examples of decorative screens

Rosedale Valley Multi-Use Trail Timeline

Underground Utility Investigations



- There are numerous Toronto Water assets along Rosedale Valley Road
- Running parallel to the Multi-Use Trail there is a combined sewer main
- Currently undertaking underground utility investigations to assess the conditions of those pipes
- Will be used to create a risk mitigation strategy during construction



Green vent pipe on existing MUT

Coordination with Glen Road Pedestrian Bridge

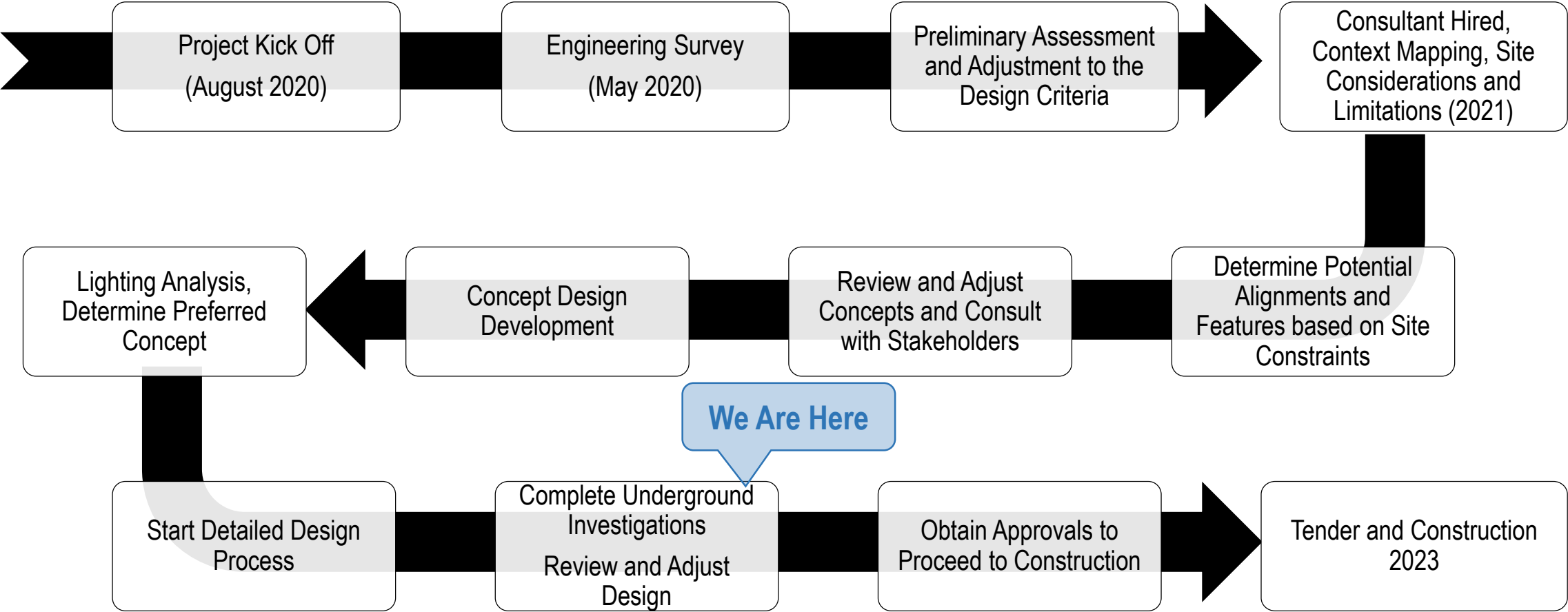


- Reconstruct the Glen Road pedestrian bridge (Morley Callaghan Footbridge) across the Rosedale Valley Ravine and the pedestrian tunnel under Bloor Street East that connect the neighbourhoods of Rosedale and North St James Town
- The bridge removal is still pending
- An update will come through that project shortly



Glen Road Pedestrian Bridge artist rendering

Next Steps





Poor, inaccessible and limited access to the Multi-Use Trail



Noise issues from vehicular traffic on Rosedale Valley Rd overnight

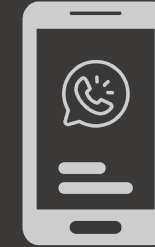


Invasive species



Poor wayfinding

Questions?



CONTACT US

If you have any questions or concerns feel free to contact:

Elli Papaioannou, Senior Project Manager
Elli.Papaioannou@toronto.ca