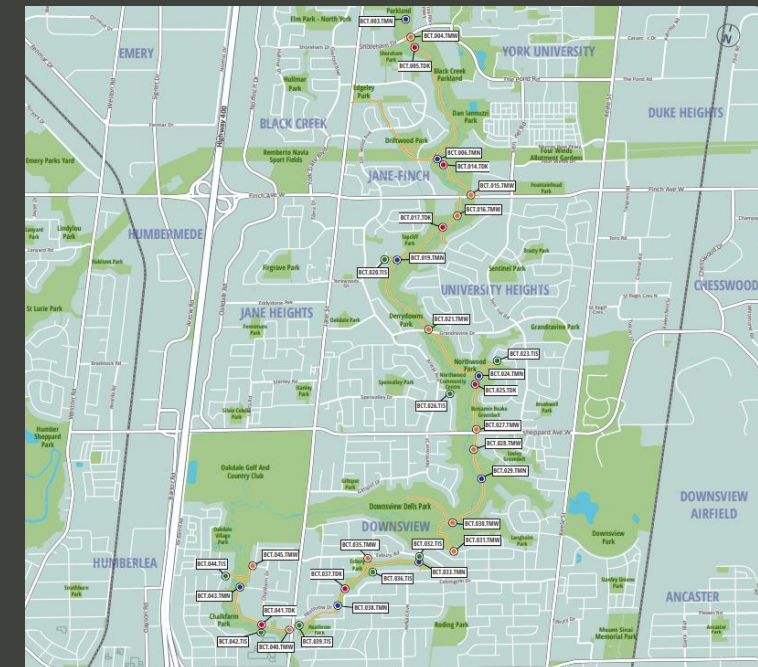


# Black Creek Trail Wayfinding Signage

Jane-Finch Initiative CAC Meeting  
December 2022



# Project Overview

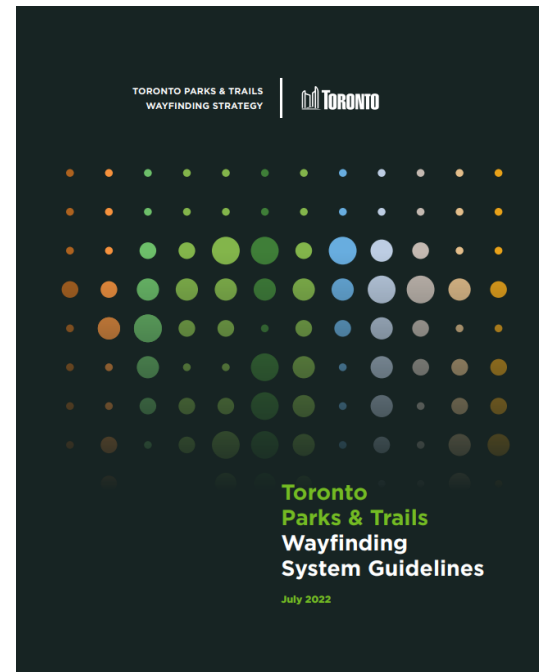
The **Ravine Strategy** supports a ravine system that is natural, connected sanctuary essential for the health and wellbeing of the city, where use and enjoyment support protection, education and stewardship.

**ACTION 12:** Review existing trails and access points and develop a wayfinding implementation plan

**ACTION 8:** Identify 10 Priority Investment Areas (PIAs)

**ACTION 13:** Develop opportunities to honour and share stories of special and historic spaces and ways of relating to the lands **(also see Toronto Reconciliation Action Plan Vision C)**

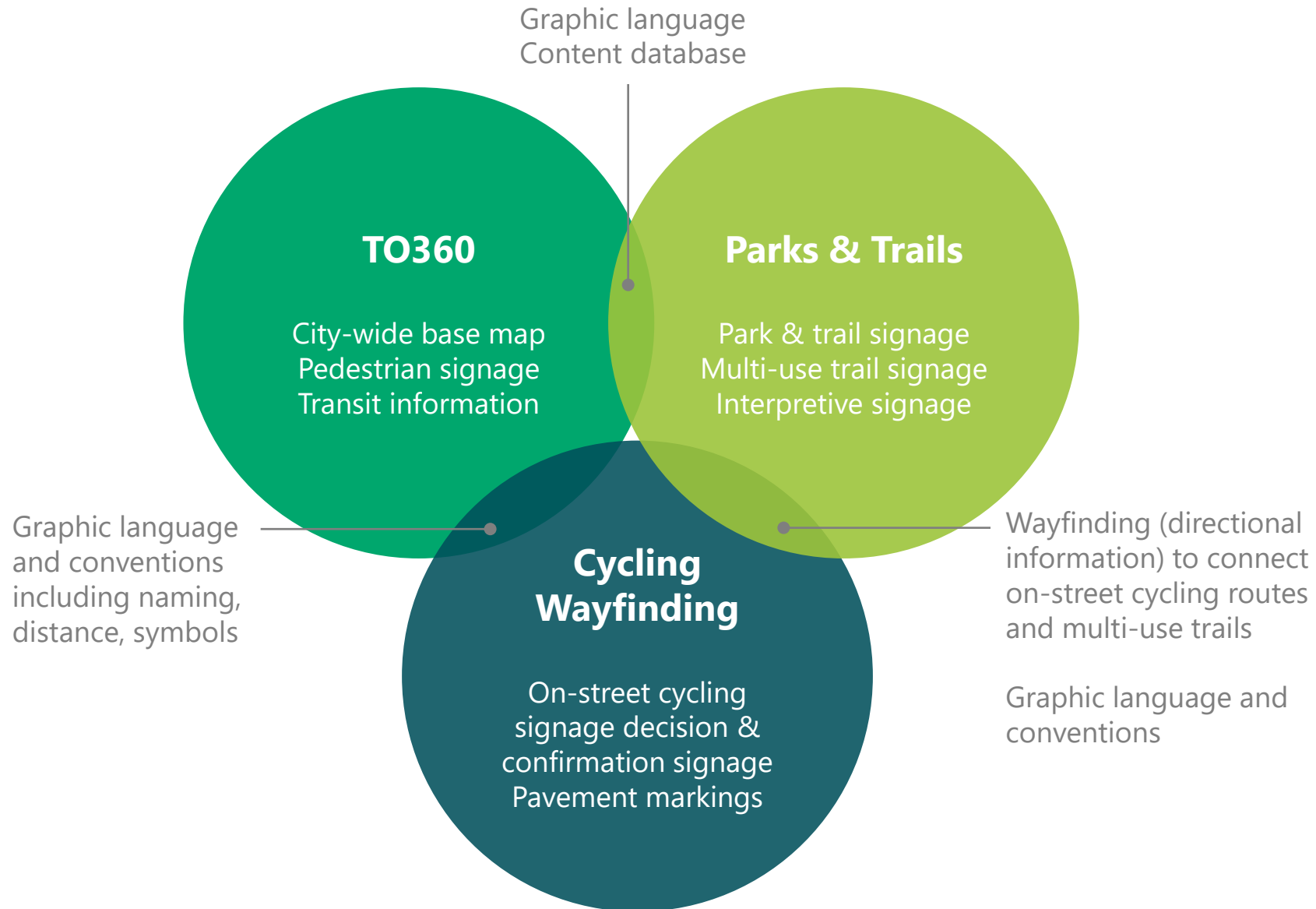
The **Toronto Parks & Trails Wayfinding Strategy** develops consistent and accessible signage and information system guidelines for parks and trails, including ravine areas. It is an opportunity to reduce visual clutter and encourage the use and discovery of parks and ravines.



## SIGN DESIGN PRINCIPLES:

- A user-based approach
- Simplicity
- Consistency
- Placement
- Visual language and identity
- Integrate with surroundings
- Modular and easily updateable
- Encourage interaction
- A sign for all seasons

# System Overlaps

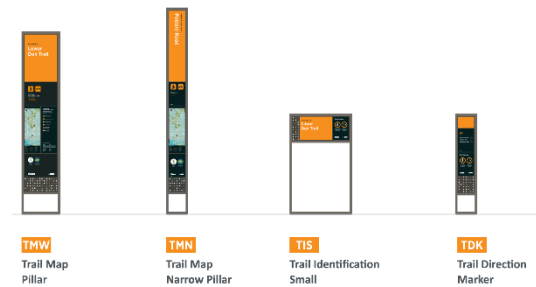


# Toronto Parks and Trails Wayfinding

The Toronto Parks and Trails Wayfinding Strategy seeks to create **one comprehensive and unified signage system** across its 1,600 public parks and 600 kilometre trail system.



## Natural Environment Signs



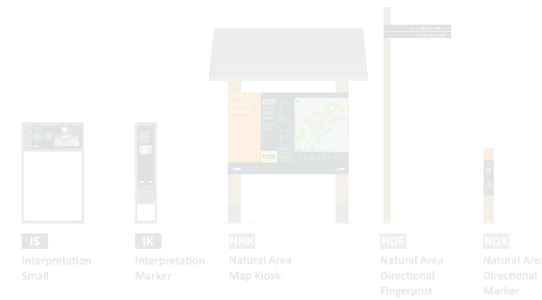
## Multi-Use Trail Signs



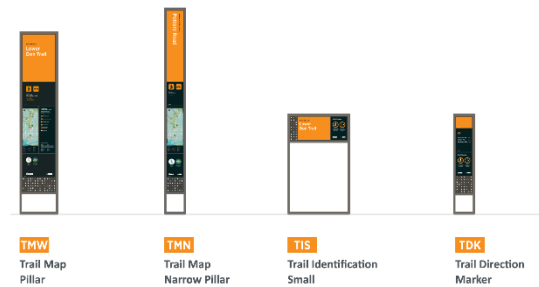
## Park Signs

# Toronto Parks and Trails Wayfinding

The Toronto Parks and Trails Wayfinding Strategy seeks to create **one comprehensive and unified signage system** across its 1,600 public parks and 600 kilometre trail system.



## Natural Environment Signs



## Multi-Use Trail Signs



# Black Creek Trail Wayfinding Milestones

A multi-stage process:

We Are Here



# Multi-Use Trail Sign Types

\* Content for illustrative purposes only



**Trail Map Wide Pillar**



**Trail Map Narrow Pillar**



**Trail Identification Small**



**Trail Directional Marker**

**4**  
types of trail  
wayfinding  
signage

# Multi-Use Trail Sign Types

\* Content for illustrative purposes only

## 1. Trail Map Wide Pillar

Provides information about the trail and helps users to plan their journey.

**Typically located at:**

Trail heads

**Primary function:**

To identify a trail and display a map



An interpretive panel may be dedicated to honouring and sharing stories of special and historic spaces and ways of relating to the natural environment





# Multi-Use Trail Sign Types

\* Content for illustrative purposes only

## 2. Trail Map Narrow Pillar

Provides information about the trail and helps users to plan their journey.

**Typically located at:**  
Access ways to trails

**Primary function:**  
To identify a trail and display a map



Front

Back



# Multi-Use Trail Sign Types

\* Content for illustrative purposes only

## 3. Trail Identification Small

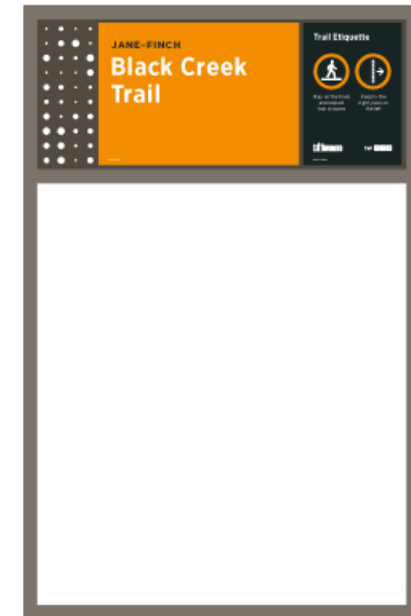
**Identifies trail accessways (at the top/bottom of stairs, ramps and pathways leading to multi-use trails).**

### **Typically located at:**

Accessways to trails (at the top/bottom of stairs, ramps and pathways leading to Multi-Use Trails)

### **Primary function:**

To identify a trail



# Multi-Use Trail Sign Types

\* Content for illustrative purposes only

## 4. Trail Directional Marker

**Provides directions at decision points and periodically along trails for confirmation.**

### **Typically located at:**

Minor decision points, confirmation points along trails, and along trails where other signs are more than 500m apart

### **Primary function:**

To direct pedestrians/cyclists



# Modular Panels

\* Content for illustrative purposes only

## A family of modular signs adaptable to a variety of needs.

### Header

Provides name of trail & neighbourhood

### Map

Covers approximately 5km of trail extension

### Logo

Identifies connecting and overlapping multi-use recreational trails

### Information

Identifies the trail uses, and may include trail etiquette and accessibility information

### Interpretive

Contains local information about the trail or local features of cultural and historic significance

### Directions

Points to the next exits and landmarks along the trail and may include the exit names, accessibility icons (stairs and ramps) when relevant

### Etiquette

Shows trail etiquette and guidance for using the trail as symbols with accompanying text

### Emergency Information

Incorporated into most signs using a Park Location Identification (PLID) panel

Note: panel layouts are specific to the requirements of the sign location and other content considerations.

# Interactive Mapping Exercise



[toronto.mysocialpinpoint.ca/black-creek-trail-wayfinding](https://toronto.mysocialpinpoint.ca/black-creek-trail-wayfinding)

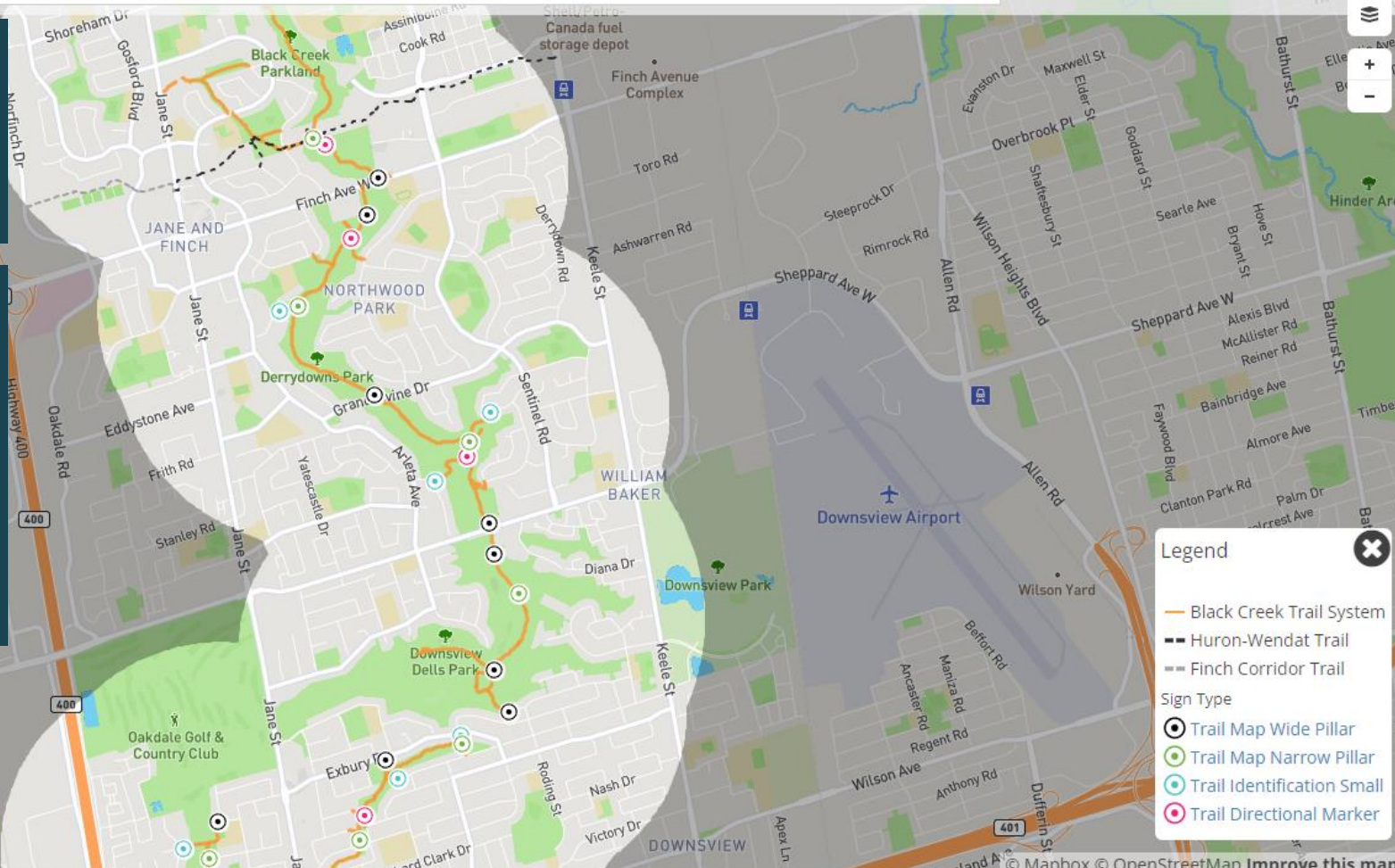


Drag to comment > I access the trail here Place of interest Point of confusion A story to tell



**Purpose:** to improve the plan through community input and feedback!

- Where do you **access** the trail from, and where are the **destinations or points of interest**?
- Do you see **opportunities** for **interpretive** panels or signage?





# Interactive Mapping Exercise



[toronto.mysocialpinpoint.ca/black-creek-trail-wayfinding](https://toronto.mysocialpinpoint.ca/black-creek-trail-wayfinding)



Drag the appropriate pin onto the map to identify access points and destinations and points of interest.

Note: pins can only be dropped into the highlighted areas. You can leave as many pins as you like.



Adjust the underlying base map to satellite view, if desired.

Select sign types on the legend for descriptions.

Legend

- Black Creek Trail System
- Huron-Wendat Trail
- Finch Corridor Trail

Sign Type

- Trail Map Wide Pillar
- Trail Map Narrow Pillar
- Trail Identification Small
- Trail Directional Marker





**Connects to the Huron-Wendat Trail ?**

**Ravine name ?**

**Park name ?**

**How far is the Finch Hydro Corridor ?**

**Recreational route ?**

**How far is Driftwood Park ?**

**Is it difficult ?**

**Facilities ?**

**Where does this lead ?**

**Is this a step free route ?**



# Stay Connected

**Web Page:** [toronto.ca/ParkWayfinding](https://toronto.ca/ParkWayfinding)

**Social Pinpoint:** [toronto.mysocialpinpoint.ca/black-creek-trail-wayfinding](https://toronto.mysocialpinpoint.ca/black-creek-trail-wayfinding)



**James Young, Project Manager**  
Toronto Parks and Trails Wayfinding System

**Contact:**

[james.young@toronto.ca](mailto:james.young@toronto.ca)

416-722-9040