

12 Property Impacts

As part of the consultation process, the City held individual property owner meetings throughout the project to inform property owners of any potential impacts to their property. Five (5) solutions have potential impacts to properties and are highlighted in **Figure 12-1** to **Figure 12-8**. Property requirements identified in this section are preliminary and will be finalized during Detailed Design.

Properties highlighted in green will require partial property takings, while properties highlighted in blue will require full acquisition.

Opportunities to reduce property requirements and for the use of temporary or permanent grading easements instead of permanent property takings should be reviewed where feasible during detailed design.

Figure 12-1. Potential Property Impacts from Solution 21B



Figure 12-2. Potential Property Impacts from Solution 23

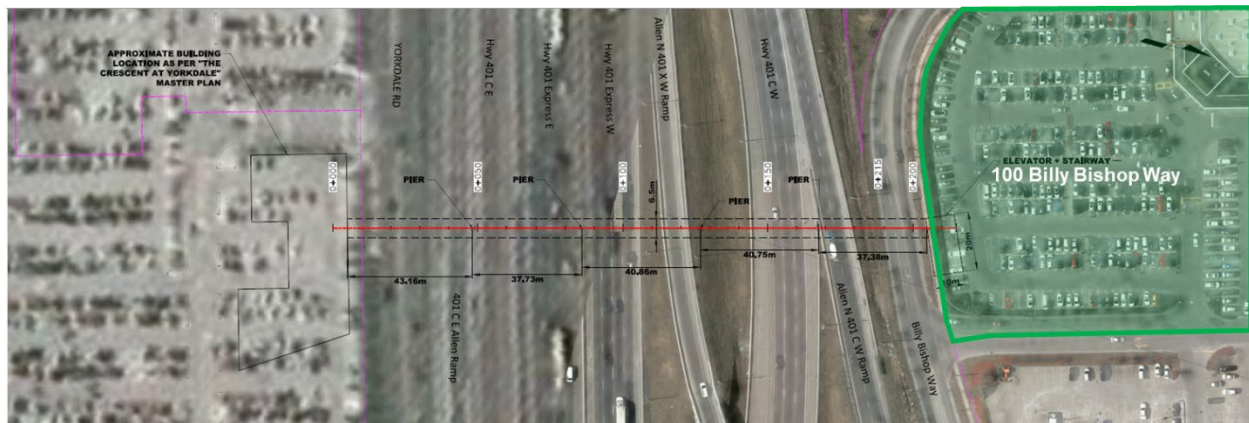


Figure 12-3. Potential Property Impacts from Solution 1A



Figure 12-4. Potential Property Impacts from Dufferin Street Re-design

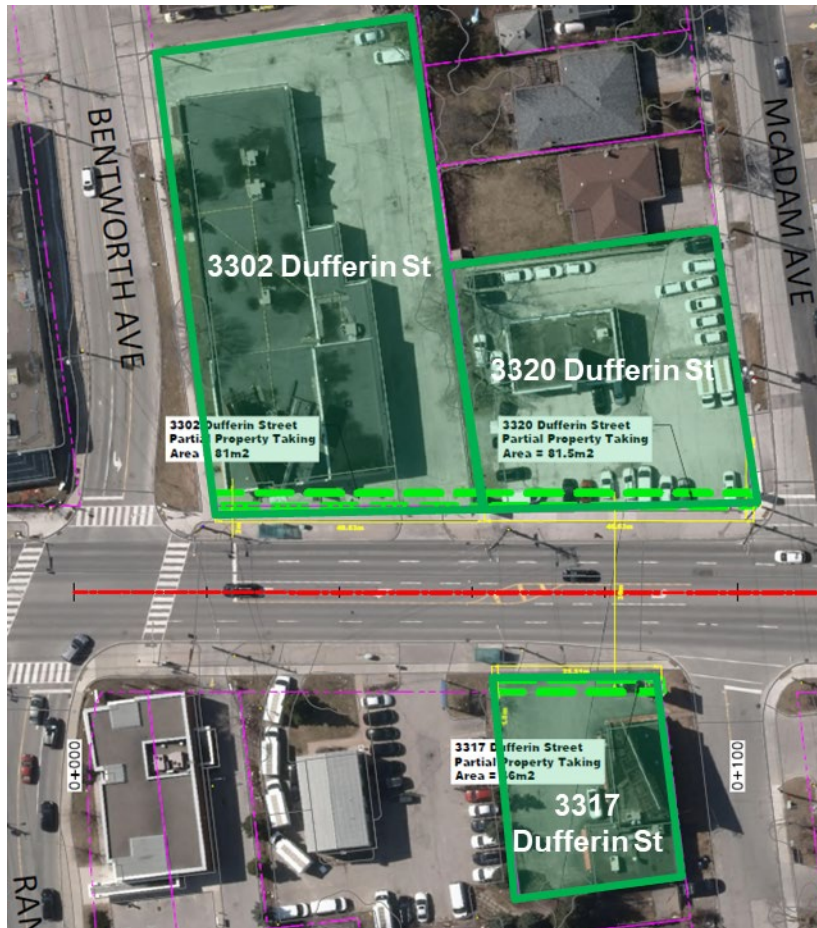


Figure 12-5. Potential Property Impacts from Dufferin Street Re-design (Continued)

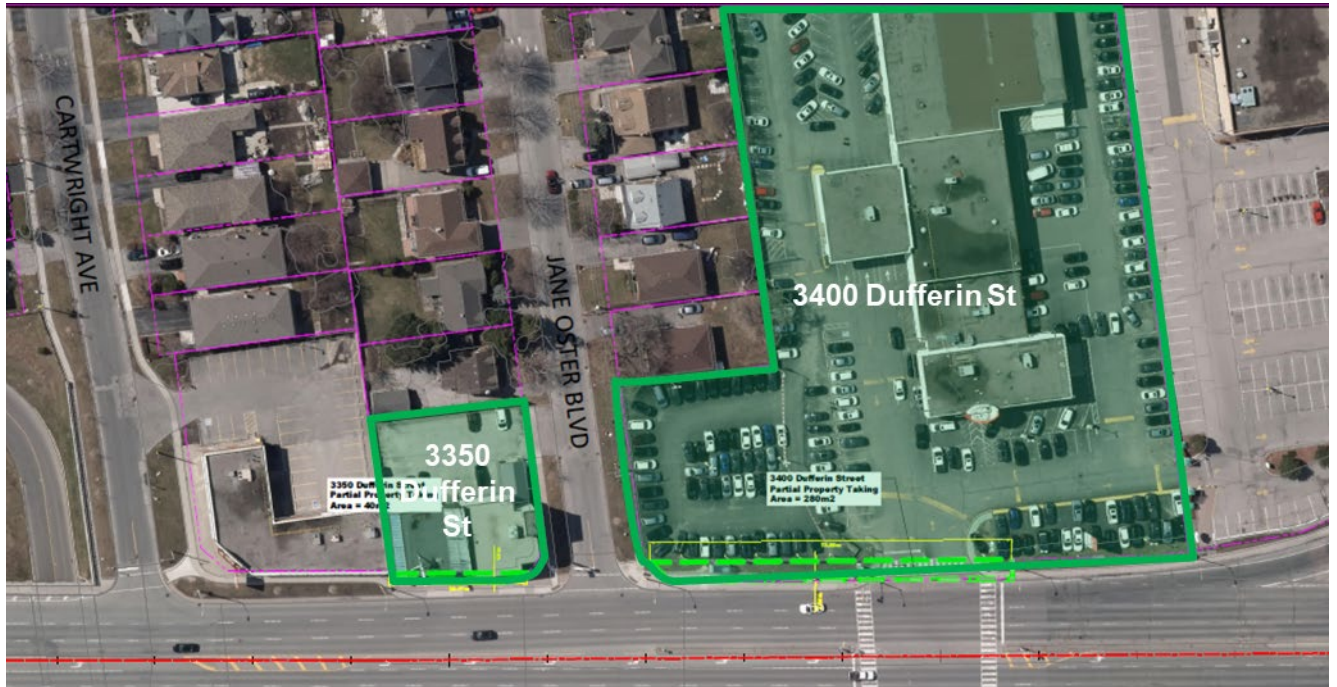


Figure 12-6. Potential Property Impacts from Dufferin Street Re-design (Continued)

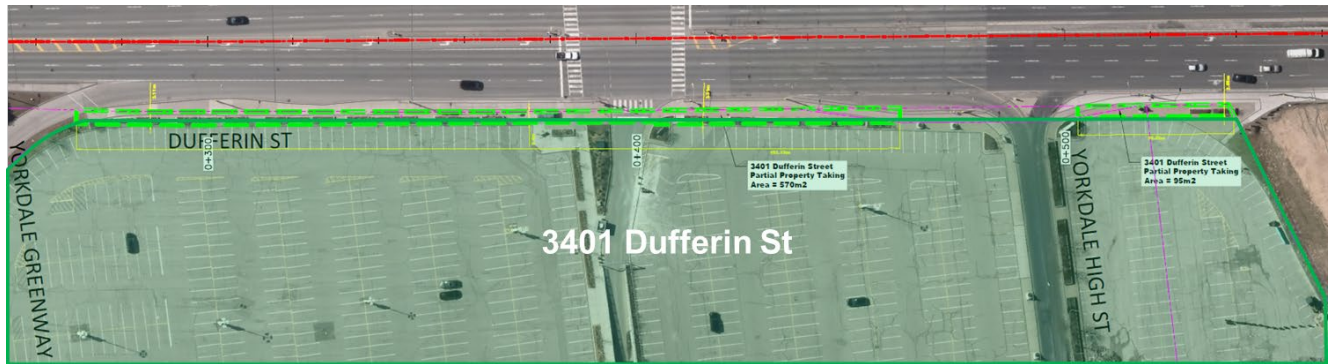


Figure 12-7. Potential Property Impacts from Dufferin Street Re-design (Continued)

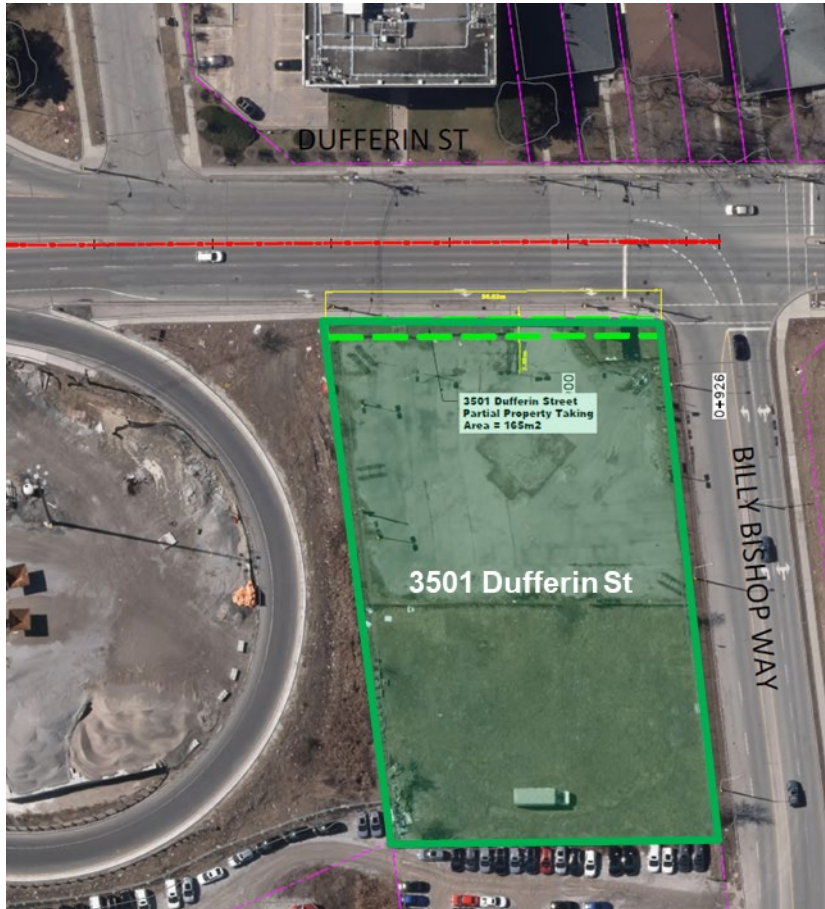


Figure 12-8. Potential Property Impacts from Solution 34

