

New Parkette at 176 Broadway Avenue

Public Meeting
November 10, 2022



Land Acknowledgement

I'd like to begin by honouring the land that I'm on. If you are not currently in Toronto, I encourage you to learn about the lands you're on.

We acknowledge the land we are meeting on is the traditional territory of many nations including the Mississaugas of the Credit, the Anishnabeg, the Chippewa, the Haudenosaunee and the Wendat peoples and is now home to many diverse First Nations, Inuit and Métis peoples. We also acknowledge that Toronto is covered by Treaty 13 with the Mississaugas of the Credit.



Opening Remarks

Councillor Jaye Robinson

City of Toronto, Ward 15 Don Valley West



Codes of conduct

As a meeting participant, you agree to:

- Be an active listener and keep an open mind by valuing a diversity of views and opinions.
- Treat all participants with kindness and respect.
- Critique ideas, not individuals.
- Avoid cursing as well as language or behaviours that could otherwise be considered rude or offensive.
- Abide by the City's Human Rights and Anti-Discrimination policy by refraining from making racist, xenophobic, misogynist, homophobic, transphobic, anti-Indigenous, ableist, ageist, or other forms of discriminatory, prejudicial, exclusionary or hateful comments and questions. These will not be tolerated and may result in expulsion from the meeting and/or process.

As City staff & process stewards, we commit to:

- Providing fair and equal access to the public engagement process to all who are interested in participating.
- Maintaining an atmosphere that is respectful of all participants and other staff members.
- Ensuring that that project outcomes and/or staff recommendations are informed by participants' concerns, interests, and desires.
- Being advocates for the integrity of the public process and ensuring it reflects as much as possible directions contained in relevant Council-approved strategies, including but not limited to the Reconciliation Action Plan, the Confronting Anti-Black Racism Action Plan, the Seniors Strategy, ChildFriendlyTO, and the Newcomer Strategy.
- Undertaking and encouraging actions by other City staff that build trust and credibility for the process among all participants.
- Providing the information participants need to meaningfully participate.



Agenda



Webex Tips, Meeting Goals, Introductions, Project Timeline



Presentation

Public Engagement to date

Site Analysis Overview

Parkette Design Options

(Questions of clarification)



Discussion



Next Steps



Tips of Engagement for a Successful Virtual Meeting



All participants have been muted for this meeting.



All cameras have been **turned off** for this meeting.



Use the chat feature to ask questions. Or click the hand icon, beside your name from the participants list on the right.




- **Computer audio issues?** Use your cell-phone for audio by calling 416-915-6530 and enter meeting number 2459 826 0011. Press *3 to ask a question.

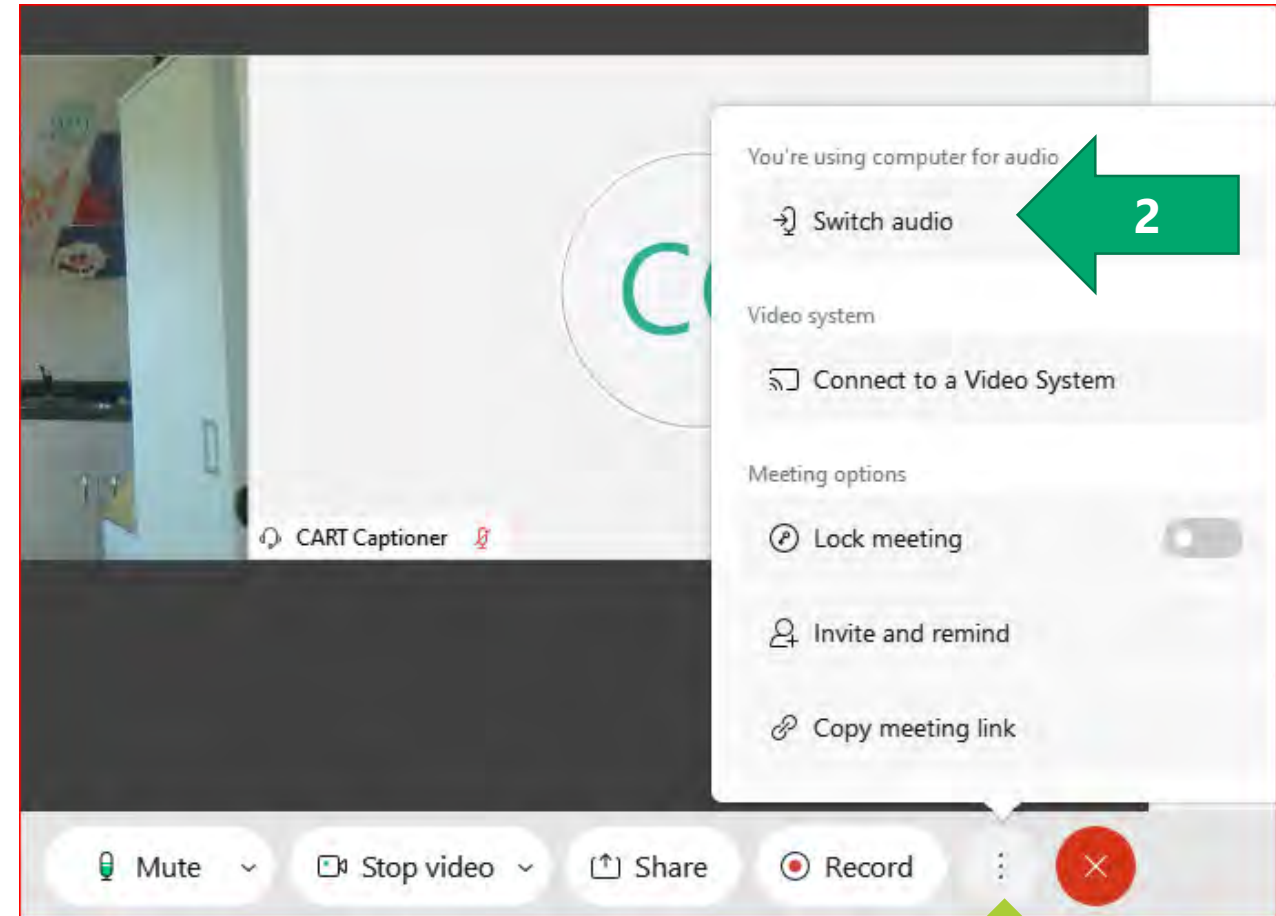


You will be given an opportunity to **ask panelists questions directly** during the Q&A.



Webex Audio Trouble?

1. Click the **More Options** button at the bottom of the screen 
2. Click **Switch Audio**
3. Use the **Call me at** function
 - a) Enter your phone number
 - b) Webex will call your phone (no long distance charges)



Objective of Tonight's Meeting

Let's create a great new park, together!

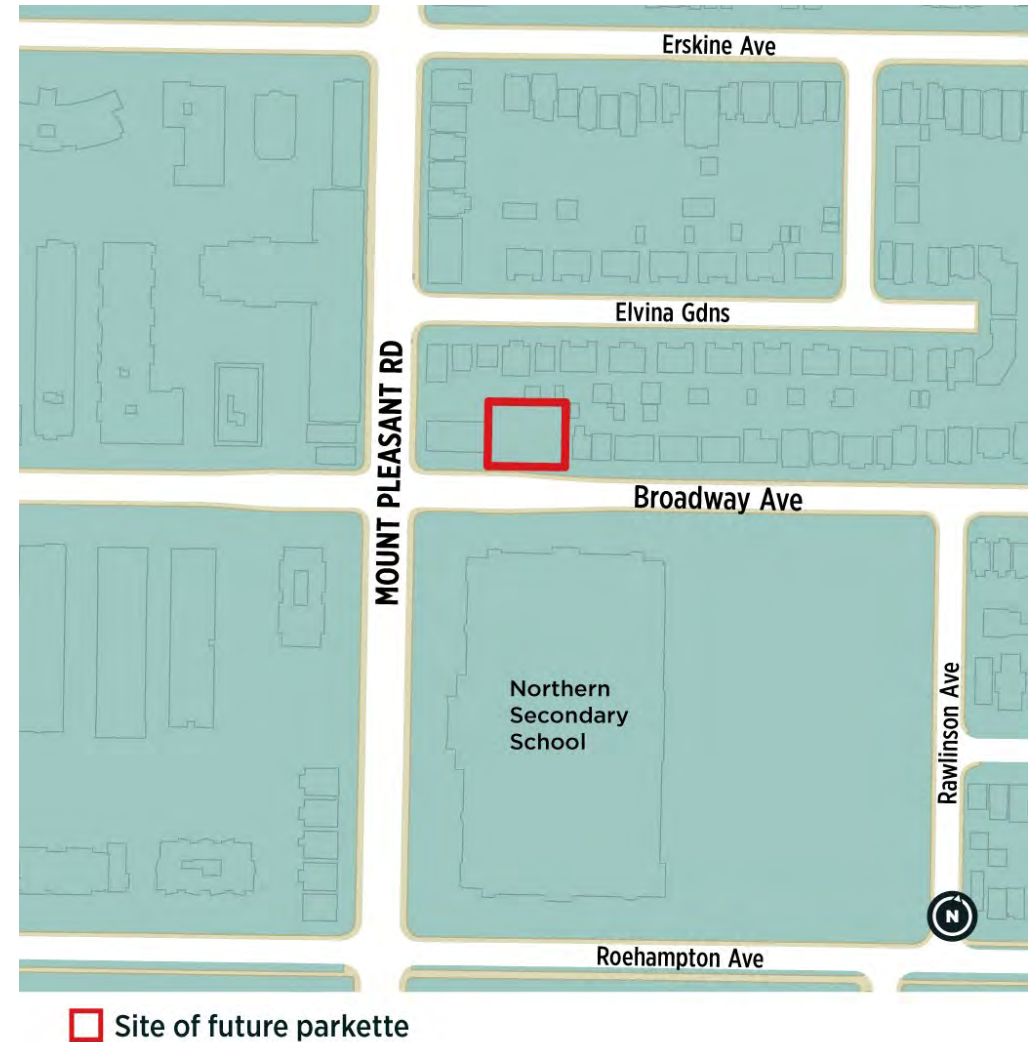
Tonight we are presenting the emerging design that has developed for this new park.

The emerging design proposes amenities and a layout of the space based on the feedback and perspectives we heard from previous engagement activities.



We want to hear from you:

- what resonates with you?
- what do you like?
- what are your preferences?



Project Team

CITY OF TORONTO

Parks Forestry and Recreation

- Rachel Weston – Senior Project Coordinator (City of Toronto, PF&R)
- Kim Behrouzian - Senior Public Consultation Coordinator (City of Toronto, PF&R)
- Pablo Muñoz - Senior Public Consultation Coordinator (City of Toronto, PF&R)

DESIGN TEAM

Victor Ford & Associates

- Jeremy Craig – Principal Landscape Architect (Victor Ford & Associates)
- Lori Philp – Principal Landscape Architect (Victor Ford & Associates)
- Kelly Park – Designer (Victor Ford & Associates)



Project Timeline



*The timeline is subject to change.

Public Engagement to Date

599

total survey
responses



1,168

total survey
participants





98%

of respondents would travel to the
park on foot

51%

would visit with their partner

42%

would visit with their
children

36%

would visit alone

35%

would visit with friends

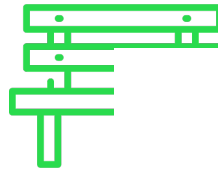
2021 Visioning Survey

Features identified as most important to respondents included:



88%

**Trees and
planting areas**



86%

Seating



83%

Lighting

- Open lawn for flexible passive/active use (72%)
- Bottle filling station and/or drinking fountain (62%)
- Pathways (61%)
- Play Area for children (48%)
- Tables for eating/games (48%)

Key Insights

Strong enhancement of local biodiversity

Native trees, shrubs, and ground cover planting.

Comfortable seating that invites people to linger

Seating areas both in the shade and sun, taking advantage of views.

Leading with landscape

Survey respondents felt strongly that the new park should accommodate a variety of trees and plantings to increase local biological diversity. This includes providing a safe and healthy habitat for pollinator and insect species, which are key for a healthy biological environment.

Opportunities for play

Survey respondents expressed a need for more playgrounds in the area to serve the growing community.

Safe, inclusive and accessible

Survey respondents maintained that the delivery of safe places is one of the key components that bring people together, whilst a fully accessible park ensures that all individuals have equal access, opportunity and dignity in the use of the new park.

Site Analysis Overview

existing conditions

- landscape architects observed the park and hired arborists to assess the trees (including the trees on neighbouring properties)



existing conditions

- landscape architects observed the park and hired arborists to assess the trees (including the trees on neighbouring properties)



existing conditions

- the project team met with parks staff to get their input and look at the services on site
- the city also provided maps of buried utilities in and near park



existing conditions

- landscape architects analyzed slopes and drainage patterns
- the main feature is the slope at the front that gradually increases from east to west



opportunities and constraints

constraints:

- small size with neighbours nearby
- mature tree
- slopes along frontage, especially at west
- locations of servicing determined before park design



Parkette Design Options

Primary Features in both Parkette Design Options



- Trees and planting areas
- open lawn areas for passive recreation



- Playspace



- Seating



- Pathways



- Lighting

Parkette design 1 (tree)



1. EXISTING TREE
2. NEW TREE PLANTING
3. PLANTING BED WITH ORNAMENTAL POLLINATOR PLANTING
4. LINEAR (BACKLESS) BENCH ON HARD SURFACE
5. OPEN LAWN AREA
6. HARD SURFACE PATHWAY
7. PLAY AREA (PLAY EQUIPMENT AND SAFETY SURFACING, TBD)
8. EXISTING LAWN AREA
9. BENCH ON HARD SURFACE
10. WATER BOTTLE FILLER ON HARD SURFACE
11. LINEAR (WITH BACK) BENCH ON HARD SURFACE
12. NEW ORNAMENTAL FENCE
13. EXISTING CONCRETE SIDEWALK



Parkette design 2 (pollinator)



1. EXISTING TREE
2. NEW TREE PLANTING
3. PLANTING BED WITH ORNAMENTAL POLLINATOR PLANTING
4. LOUNGERS ON CONCRETE PAVEMENT
5. OPEN LAWN AREA/EXISTING LAWN AREA
6. NEW SPECIMEN TREE
7. PLAY AREA (PLAY EQUIPMENT AND SAFETY SURFACING, TBD)
8. HARD SURFACE PATHWAY
9. TWO-WAY BENCHES ON HARD SURFACE
10. WATER BOTTLE FILLER ON HARD SURFACE
11. NEW ORNAMENTAL FENCE
12. NEW CHESS TABLE ON HARD SURFACE
13. BENCH ON HARD SURFACE
14. EXISTING CONCRETE SIDEWALK



playground equipment



Parkette design 1 (tree)
PLAY EQUIPMENT OPTION A



playground equipment



Parkette design 1 (tree)
PLAY EQUIPMENT OPTION A



playground equipment



Parkette design 1 (tree)
PLAY EQUIPMENT OPTION B



playground equipment



Parkette design 1 (tree)
PLAY EQUIPMENT OPTION B



playground equipment



Parkette design 2 (pollinator)
PLAY EQUIPMENT OPTION A



playground equipment



Parkette design 2 (pollinator)
PLAY EQUIPMENT OPTION A



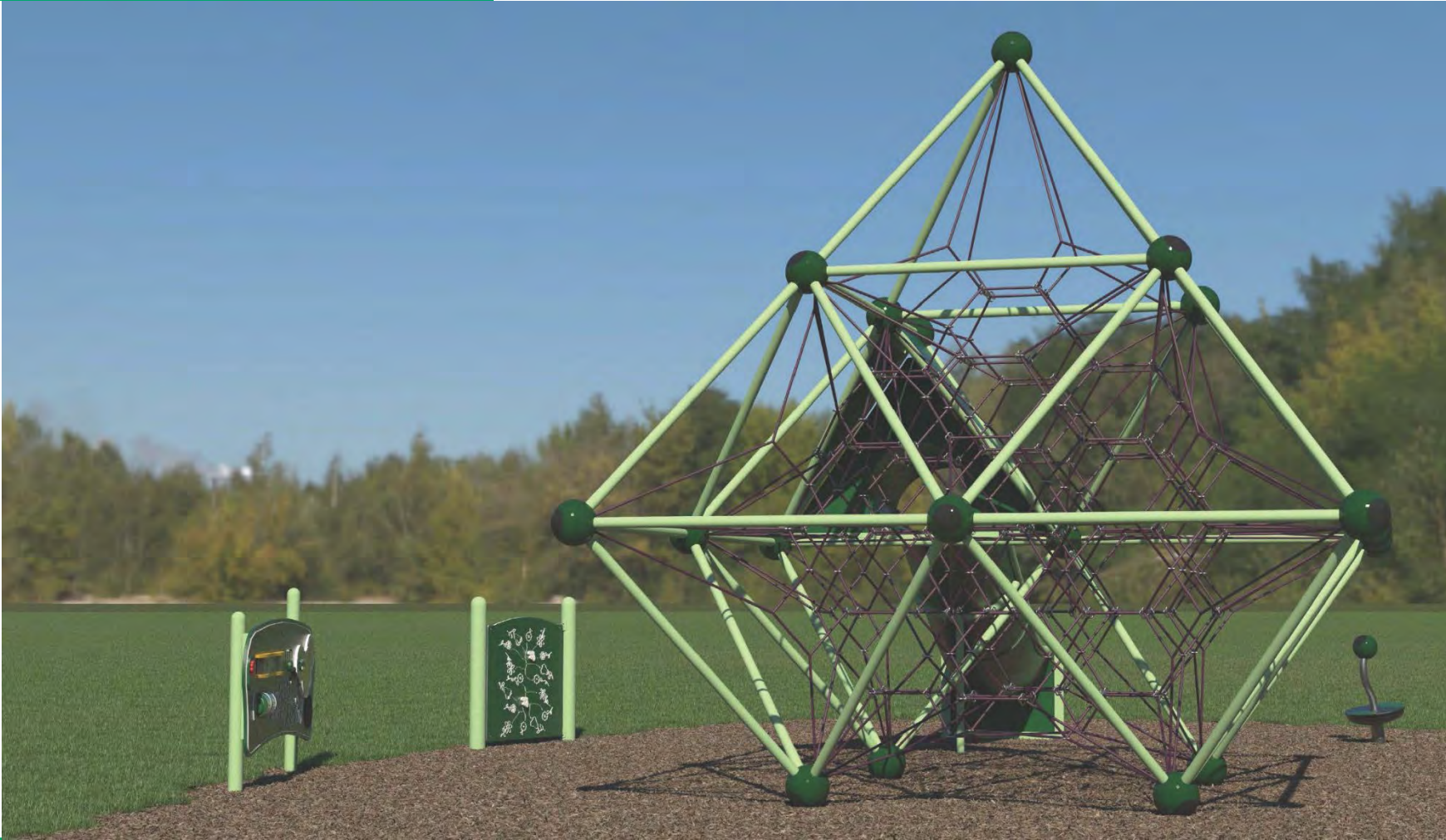
playground equipment



Parkette design 2 (pollinator)
PLAY EQUIPMENT OPTION B



playground equipment



Parkette design 2 (pollinator)
PLAY EQUIPMENT OPTION B



surfaces (all designs)

default playground protective surface is cedar-based wood fibre



surfaces (all designs)

hard surface option 1 is interlocking pavers

- warm-toned, natural colour blend
- simple, classic pattern



Option 2 is exposed aggregate concrete

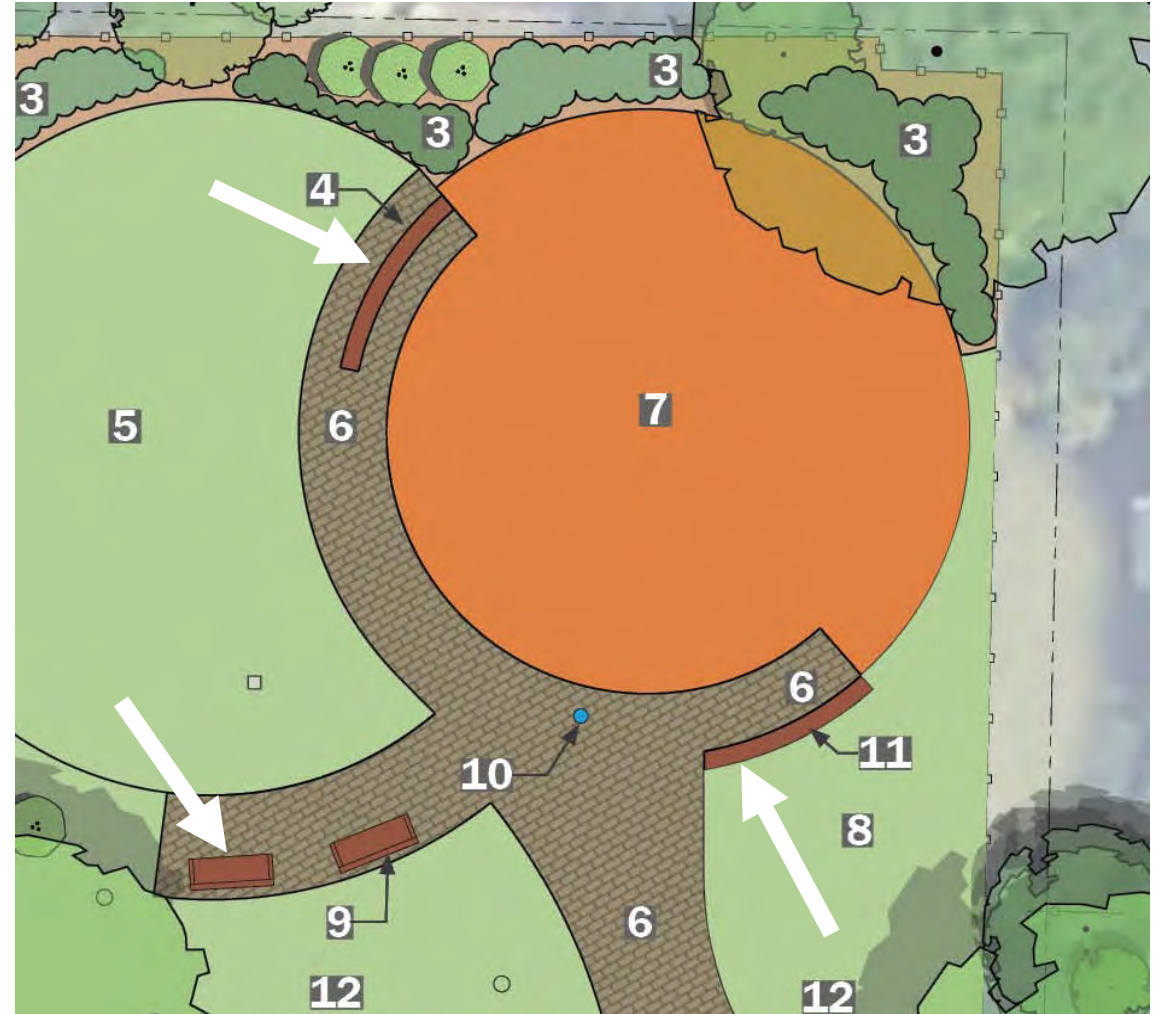
- natural pebble finish and colour



site furnishings (parkette design 1)



family 1 – “ogden”



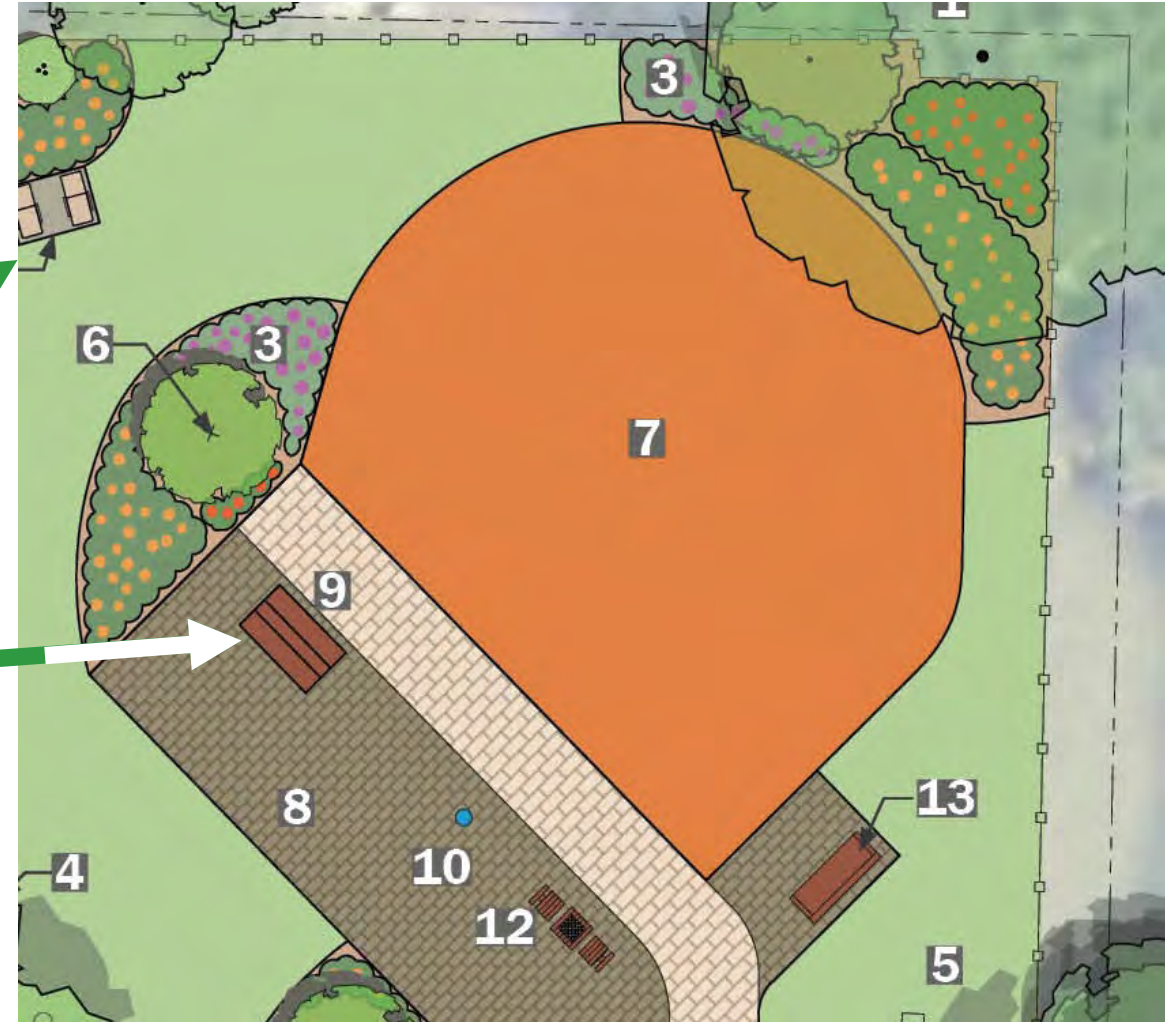
A wooden slat bench with a metal frame and armrests. The bench is made of dark brown wood slats and has a silver-colored metal frame. It is shown from a side profile against a white background.



site furnishings (parkette design 2)



family 1 – “streetlife”



site furnishings (parkette design 2)



family 2 – “equiparc”



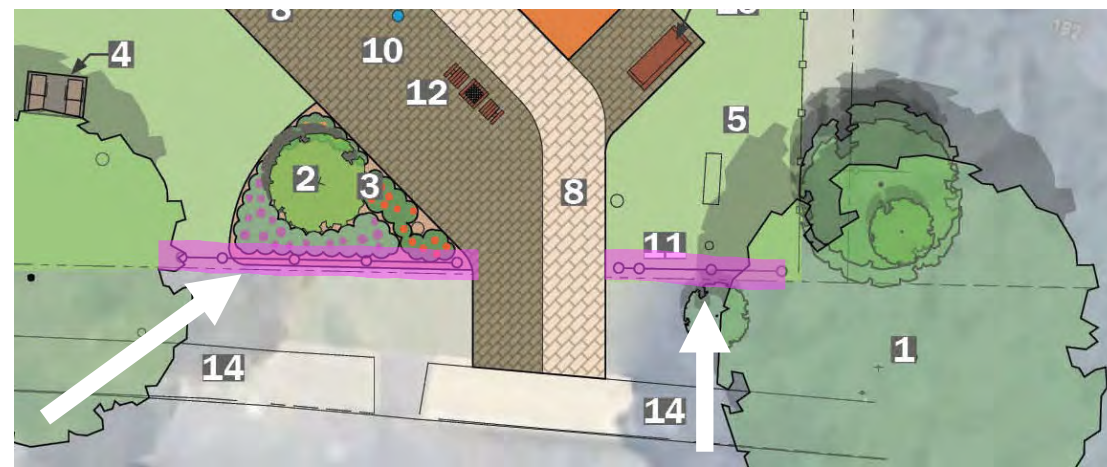
site furnishings (parkette design 2)



game table options
(left=concrete, right=wood and steel)



ornamental fence (all designs)



bottle filler (all designs)

**bottle filler will be blue Elkay
model as shared by parks**



pollinator plantings (all designs, but more in parkette design 2)

pollinator plantings included in both concepts (species selection will be generally native and lower maintenance. water will be provided, but not automatic irrigation)



Discussion

Parkette Design Options



Parkette design 1 (tree)



Parkette design 2 (pollinator)

Playground Options



Parkette design 1 (tree)
PLAY EQUIPMENT OPTION A



Parkette design 1 (tree)
PLAY EQUIPMENT OPTION B

Playground Options



Parkette design 2 (pollinator)
PLAY EQUIPMENT OPTION A



Parkette design 2 (pollinator)
PLAY EQUIPMENT OPTION B

Next Steps

Next Steps

- Launch online survey to gather more input from community on the concept design options
 - Survey opens **November 10th** and runs until **November 24th**, link is on the project webpage: www.toronto.ca/176BroadwayPark
- Consolidate and analyze feedback from community and stakeholders
- Develop preferred concept design