

Moss Park Park Improvements & John Innes Community Recreation Centre Replacement Project

WHAT WE HEARD REPORT:

Indigenous Communities' Meeting #2

December 12, 2022



Table of Contents

1.0 About this Report	3
1.1 Project Schedule	3
1.2 Indigenous Communities' Engagement Timeline	3
1.3 Meeting Overview	4
2.0 What We Heard	5
2.1 Summary of Key Findings	5
Appendix A - Project Presentation	9

1.0 About this Report

This report summarizes key findings, insights and input collected from the Moss Park park Improvements & John Innes Community Recreation Centre Replacement Project's second meeting held with Indigenous Communities.

The primary focus of the meeting was centered around the direction for the public artwork, a component which emerged from the first Indigenous workshop. Indigenous community members provided feedback and input on the designs and considerations related to the two public art projects planned for the project. In addition to the public art component, latest updates on the Community Recreation Centre design were also shared.

1.1 Project Schedule

Summer 2022 - Phase 1: SET THE STAGE

Introduce the project, explain the process, and lay the project groundwork.

Summer 2022 – Fall 2022 Phase 2: CONFIRM THE VISION, PRINCIPLES, BIG MOVES

Introduce the project, revisit More Moss Park findings, and explore how things have changed since 2015. Better understand evolving local issues and how the project can best support local needs. Confirm the Principles and Big Moves of the project.

WE ARE HERE

Fall 2022 to Spring 2023: Phase 3 - CONCEPT DESIGN OPTIONS

Use what we learn in Phase 2 to start developing ideas for park amenities and concepts for the new Community Recreation Centre. Review ideas through design options presented to the community and revise ideas based on feedback.

Spring 2023: Phase 4 - PREFERRED CONCEPT

Refine the concept plans for the park and John Innes Community Recreation Centre based on feedback and present the preferred concept to the community. Review ideas with the community and revise plans and designs based on feedback.

1.2 Indigenous Communities' Engagement Timeline

Engagement with Indigenous Communities will include ongoing direct communication with local Indigenous organizations and individuals at each phase of the project. The following are scheduled engagement activities with the Indigenous Communities:

- Connect with Council Fire - June 10th, 2021 (COMPLETE)
- Indigenous Communities Meeting #1 - August 31st, 2021 (COMPLETE)
- Indigenous Communities Meeting #2 - December 12, 2022 (**We Are Here**)

- Toronto Aboriginal Support Services Council Meeting - Fall/Winter 2023
- Indigenous Communities Meeting #3 - Winter/Spring 2023

1.3 Meeting Overview

WHEN: December 12, 2022, at 5:00 PM to 7:00 PM
WHERE: Virtually on WebEx
ATTENDEES: 12 Participants
PROJECT TEAM: City of Toronto – Parks, Forestry & Recreation Division
PROCESS (Public and Stakeholder Engagement)
The Planning Partnership (Landscape Architecture)
Two Row Architect (Landscape Architecture & Indigenous Lens)
MJMA (CRC Architecture & Design)

The virtual meeting took place over WebEx, with a total of 12 participants. The meeting began with a welcome and Land Acknowledgement. The Project Team presented an overview of the project (**see Appendix A for the presentation slide deck**), including the following:

1. project overview, background and engagement timeline to-date
2. what was heard in the previous engagements
3. update on the designs for the John Innes Community Recreation Centre Replacement project
4. Introduce the public art component of the project

2.0 What We Heard

2.1 Summary of Key Findings

A group discussion was facilitated by Trina Moyan, Indigenous Engagement Lead for the project. The discussion was open-ended with a primary focus on gathering community members' feedback on the vision for the public art component and the Community Recreation Centre design.

In the meeting we heard the importance of creating a welcoming space and areas for healing, recreation and ceremony, and an interest in the incorporation of youth mentorship, supporting local Indigenous artists and the importance of language and Placekeeping in guiding the direction of the artwork.

Below we elaborate further on the key takeaways:

Maintaining a welcoming space

Design should be beautiful but still welcoming

When providing feedback on the updated designs a number of participants shared that, even though the latest renderings of the Community Recreation Centre are visually appealing they wanted to ensure the building would still feel welcoming and meet the needs of Moss Park's unhoused people.

Participants want the space to continue to support unhoused people.

A participant expressed that there are a lot of Indigenous people that are unhoused, and asked the Project Team how the new Community Recreation Centre was going to support the unhoused Indigenous people of Moss Park.

City staff responded that there are programs currently running for unhoused people at the Community Recreation Centre, including access to showers and 1-on-1 supports. In the spring, Community Recreation Centre staff plan to bring back outdoor park activities in areas of the park that are not closed for the Metrolinx subway construction. A floor plan was shared showing the new accessible washroom locations with entry doors facing the park. The new Community Recreation Centre will include a Shelter, Support & Housing Administration office. Participants were reminded that another consultation will be held closer to the end of construction to discuss programming and space use in greater detail.

Recommendations for the public art component

Investing in local artists and youth

The City has selected an Indigenous curator to lead the public art component of the project, participants were excited about the impact the Indigenous lead public artwork will have in making the Community Centre an Indigenous space. **Participants also noted that** there are talented youth in the community and suggested including youth more intentionally in the submission process. Many participants agreed with the idea of incorporating youth mentorship and including local Indigenous artists. Specific suggestions included having one of the two artworks be youth-lead, and having a mural designed by a youth incorporated in the youth space. **City staff replied** that it is a common practice amongst professional public artists to incorporate workshops where youth and local community are engaged through and mentorship in their art plan. In regards to the nomination of local Indigenous artists, the City staff replied that there is flexibility in adjusting the nomination pool criteria.

Direction of the artwork

Discussion highlighted the importance of community building, intergenerational exchange and importance of language for the art project. Participants asked how unhoused people could be included. City staff responded that the art project can provide an opportunity to engage unhoused people. Native Arts Society was suggested as a possible organization to collaborate with because they are currently connected to supporting unhoused artists local to Moss Park.

Participants also discussed how language and placekeeping can be incorporated in the final artwork. Ideas shared included incorporating words in Indigenous languages such as Ojibwe and Mohawk, a statue of a native activist, representation of the four directions, four colours and four medicines, and depictions of Anishinaabe history. In relation to language, one participant raised the question around the possibility of renaming or having a secondary name for John Innes Community Recreation Center itself.

City staff shared that the City has just approved a renaming policy and provided an overview of what a renaming process would entail. The participants were directed to the updated [The City of Toronto - Property Naming Policy](#) and assured participants that the idea of renaming the Community Recreation Centre can be discussed later in the engagement process.

A place for healing, recreation and ceremony

Participants identified their preferences for the Community Recreation Centre to be focused around uses related to healing, ceremony and recreation. Participants revisited the idea of including a sweat lodge, which was discussed in the first Indigenous Communities' meeting.

City staff referred back to advice provided by Matthew Hickey from Two Row Architect, who is on the design team, and had shared with participants that a sweat lodge was not advised for the rooftop because it is based in the earth, and that it would not be suitable in the park because it requires a secure, dedicated, private space which the park cannot provide.

Participants also returned to the idea of having a designated sacred fire location within Moss Park. City staff explained that the Indigenous Affairs Office (IAO) at the City of Toronto has done extensive consultation with Indigenous communities that lead to the designation of Allan Gardens and Regent Park as sacred fire sites. While Allan Gardens and Regent Park are designated sacred fire locations, City staff reminded participants that permits are not needed for sacred fires, and assured that sacred fires can still happen at Moss Park. City staff further acknowledged that they have heard Moss Park can be a good location for sacred fires and will continue to take this idea into consideration as they begin the park design, which will be presented in the new year. Further discussion of a sacred fire will be part of the upcoming Park design process and discussed with participants in the next phase of meetings.

A number of participants also expressed interest in using the Community Recreation Centre for PowWows, smudging and ceremonies.

A member of the project team confirmed that with the new heating, ventilation, and air conditioning (HVAC) designs, smudging ceremonies would be able to happen anywhere in the Community Recreation Centre. The project team referred to the floor plan to illustrate that the multipurpose rooms, double gym and terrace are spaces that can be used for Indigenous programming, large gatherings and ceremonies. The rooms would be available to book on a program-to-program basis, and have unique design features which connect to the outdoors.

One participant shared that they would also like to see recreational facilities such as billiards and ping pong tables. City staff responded that with the large lobby and rooftop, game tables can be incorporated both outside and inside to accommodate those activities.

Appendix A

Project Presentation

Moss Park Park Improvements & John Innes Community Recreation Centre Replacement

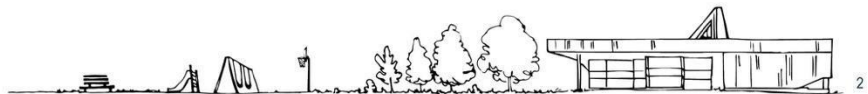
Indigenous Communities' Meeting #2

December 12, 2022
5:00 – 7:00 PM



Land Acknowledgement

We acknowledge the land we are meeting on is the traditional territory of many nations including the Mississaugas of the Credit, the Anishnabeg, the Chippewa, the Haudenosaunee and the Wendat peoples and is now home to many diverse First Nations, Inuit and Métis peoples. We also acknowledge that Toronto is covered by Treaty 13 with the Mississaugas of the Credit.



Community Guidelines

As a meeting participant, you agree to:

- Be an active listener and keep an open mind by valuing a diversity of views and opinions.
- Treat all participants with kindness and respect.
- Critique ideas, not individuals.
- Avoid cursing as well as language or behaviours that could otherwise be considered rude or offensive.
- Abide by the City's Human Rights and Anti-Discrimination policy by refraining from making racist, xenophobic, misogynist, homophobic, transphobic, anti-Indigenous, ableist, ageist, or other forms of discriminatory, prejudicial, exclusionary or hateful comments and questions. These will not be tolerated and may result in expulsion from the meeting and/or process.

As City staff & process stewards, we commit to:

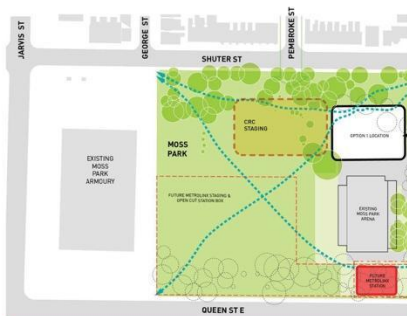
- Providing fair and equal access to the public engagement process to all who are interested in participating.
- Maintaining an atmosphere that is respectful of all participants and other staff members.
- Ensuring that that project outcomes and/or staff recommendations are informed by participants' concerns, interests, and desires.
- Being advocates for the integrity of the public process and ensuring it reflects as much as possible directions contained in relevant Council-approved strategies, including but not limited to the Reconciliation Action Plan, the Confronting Anti-Black Racism Action Plan, the Seniors Strategy, ChildFriendlyTO, and the Newcomer Strategy.
- Undertaking and encouraging actions by other City staff that build trust and credibility for the process among all participants.
- Providing the information participants need to meaningfully participate.



3

Tree Ceremony

Emerging directly from the conversation had during the the Indigenous Communities Meeting #1, join us as we honour the lives of these trees and set intentions for the future of these community spaces. The ceremony will be lead by Nehiyawak Elder Pauline Shirt who is greatly recognized for her commitment to the Toronto Indigenous community and for her dedication as a teacher and lecturer since the late sixties.



Location: Southern edge of Moss Park, along Queen St. E

Lead by Elder Grandma Pauline Shirt

Date: Thursday December 15, 2022

Time: 12:00PM – 1:00 PM

Location: Southern edge of Moss Park (along Queen St. E.)

Accessibility: The ceremony will take place on the grass. If you have any accommodation requests please let us know by replying all to this message.

RSVP: RSVP to Pablo at pablo.munoz@toronto.ca or Trina at trina@weareprocess.ca While RSVP is not required it would help us be prepare.

The ceremony will include light refreshments, coffee and tea



4

Agenda



PRESENTATION:

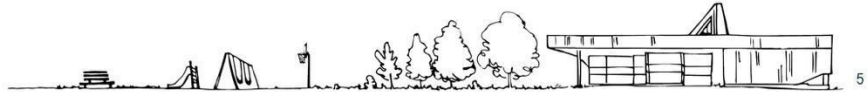
- Community Recreation Centre design updates
- Project Overview & Background
- What We Heard to date
- Public Art Competition



Let's Talk: *feedback on design update, what we heard, and public art competition*

thank
you!

Next Steps + Adjourn



Goals for this Meeting



1. Feedback on design presented and what is missing
2. Feedback in response to What We Heard
3. Feedback on what you wish to see reflected in the public art competition



Project Team



Daniel Fusca, Manager, Public Consultation, Parks, Forestry & Recreation

Pablo Muñoz, Senior Public Consultation Coordinator, Parks, Forestry & Recreation

Suzanne Cooke-Wooland, CP Capital Lead, Parks, Forestry & Recreation

Nancy Chater, CP Capital Lead, Parks, Forestry & Recreation



Nadia Galati, Principal and Engagement Lead

Trina Moyan, Indigenous Engagement Lead

Jo Delos Reyes, Planner + Strategist



David Leinster, Principal, Landscape Architecture

Jennifer Williamson, Project Manager, Landscape Architecture



Brian Porter, Principal

Matthew Hickey, Partner



Chris Burbidge, Principal in Charge

Krista Clark, Project Manager

Viktors Jaunkalns, Design Lead



John Innes Community Recreation Centre Replacement



8

BUILDING LOCATION

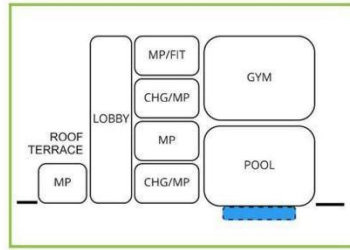
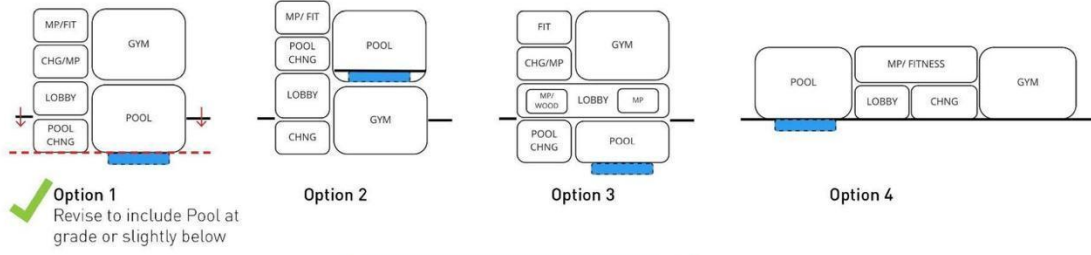


SCHEMATIC SITE PLAN

*THE PARK LANDSCAPE SHOWN IS CONCEPTUAL & NOT FINAL

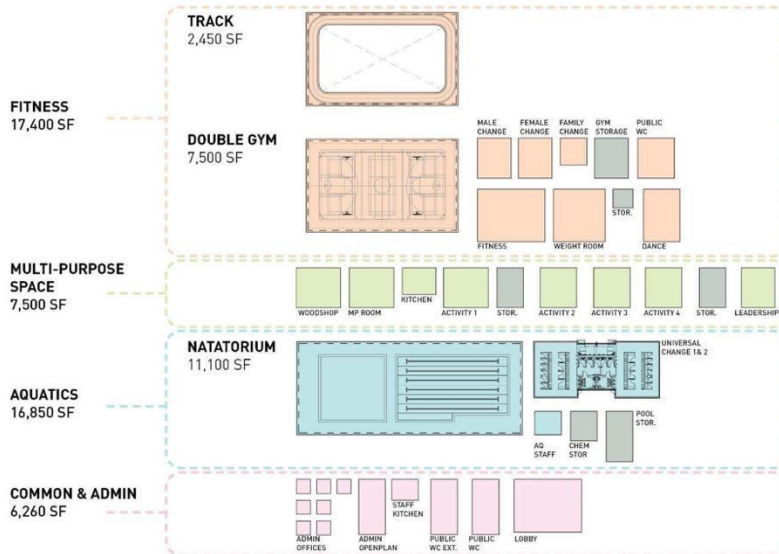


STACKED PROGRAM



Option 1
 ✓ Revised Pool & Multi-Purpose at Grade

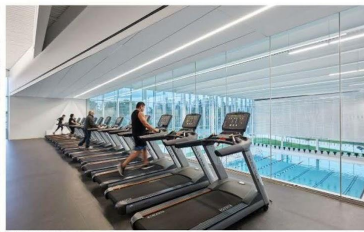
WHAT'S INCLUDED



FITNESS & FLEXIBLE PROGRAMMING



WEIGHT ROOM
StarTech.Com Community Centre



CARDIO AREA
StarTech.Com Community Centre



OPEN GYM
Churchill Meadows



MEDICINE GARDEN
Centre for Native Child & Family Well Being, FORREC & LGA Architectural Partners



INDOOR GATHERING
Red Dress Pow Wow, Reno Nevada



OUTDOOR CEREMONY
Smudge Ceremony, Tokakwitha Conference, Fargo, ND

MULTIPURPOSE ROOM PROGRAMMING



COMMUNITY KITCHEN
StarTech.Com Community Centre



DRUM CIRCLE
University of Manitoba



OUTDOOR CONNECTION
Algonquin College Institute for Indigenous Entrepreneurship, Brook McIlroy



SMUDGE & SHARING CIRCLE
Sunnybrook Health Sciences Centre



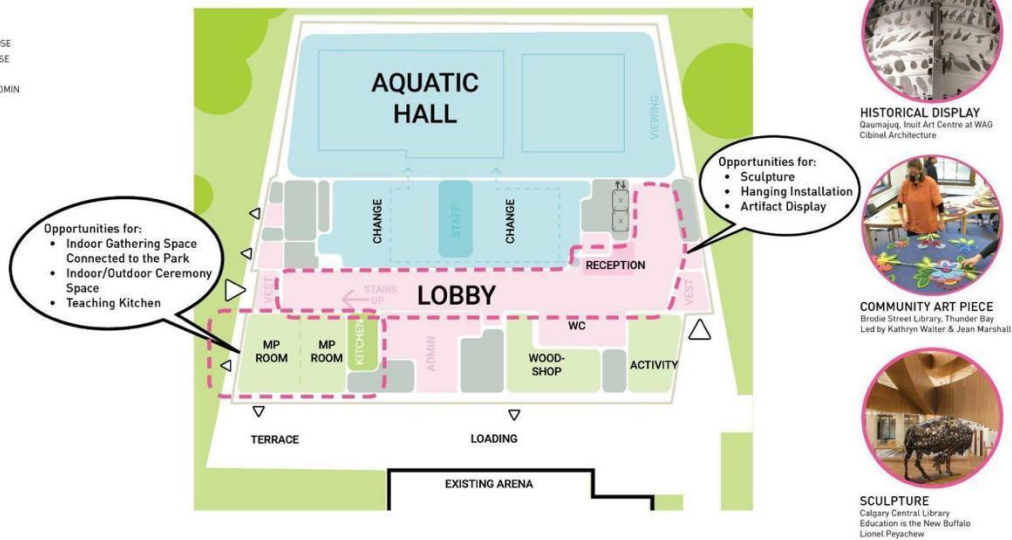
WOODSHOP
John F. Ross Collegiate Vocational Institute, Guelph

SMUDGING CEREMONY - ALL SPACES



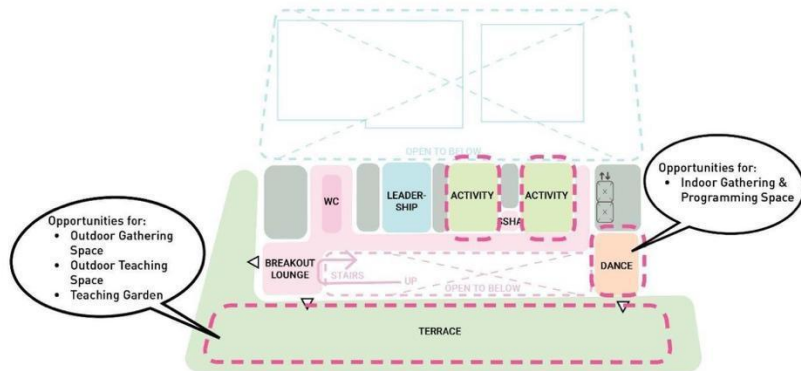
LEVEL 1 FLOOR PLAN

- LEGEND
- FITNESS
 - MULTI-PURPOSE
 - BACK OF HOUSE
 - AQUATICS
 - COMMON & ADMIN
 - ENTRY



LEVEL 2 FLOOR PLAN

- LEGEND
- FITNESS
 - MULTI-PURPOSE
 - BACK OF HOUSE
 - AQUATICS
 - COMMON & ADMIN
 - ENTRY



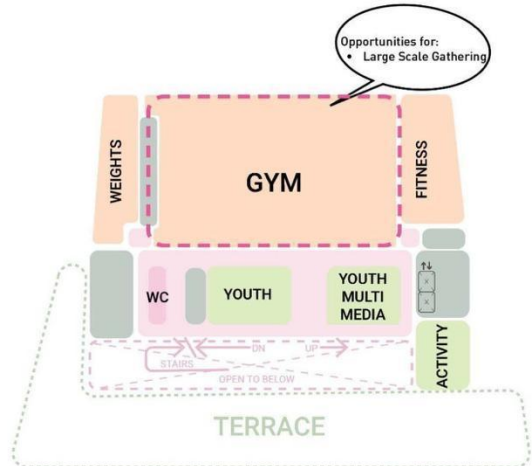
TEACHING SPACE
University of Manitoba
Website Image
Cultural Protocol



TEACHING GARDEN
Centre for Native Child & Family Well Being
LGA Architectural Partners

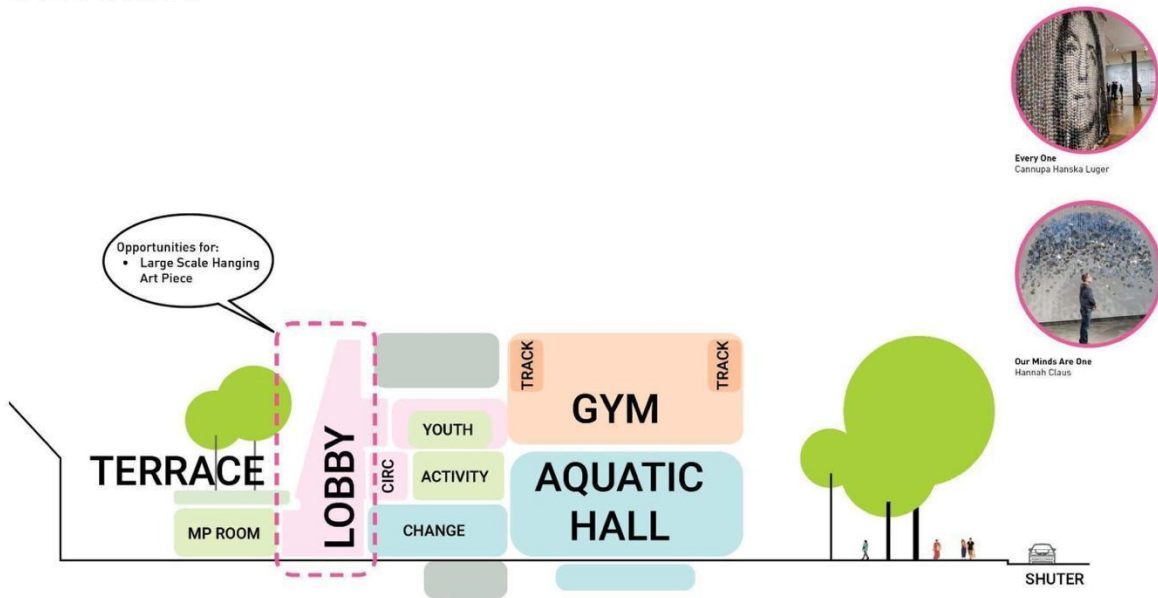
LEVEL 3 FLOOR PLAN

- LEGEND
- FITNESS
 - MULTI-PURPOSE
 - BACK OF HOUSE
 - AQUATICS
 - COMMON & ADMIN
 - ENTRY



INDOOR GATHERING
Red Dress Pow Wow, Reno Nevada
Organizers, Dancers and the drum group
One Heart

SECTION



SHERBOURNE ENTRY - VIEW SW

*THE LANDSCAPE SHOWN IS AN ARTISTIC IMPRESSION



SHERBOURNE ENTRY - VIEW NORTH

*THE LANDSCAPE SHOWN IS AN ARTISTIC IMPRESSION



SHUTER FACADE

*THE LANDSCAPE SHOWN IS AN ARTISTIC IMPRESSION



PARKSIDE ENTRY

*THE LANDSCAPE SHOWN IS AN ARTISTIC IMPRESSION



Project Background

Context and Timeline

Why is a redesign of Moss Park and the John Innes CRC needed?

The redesign of Moss Park and the 70 year-old John Innes CRC is needed to serve the evolving needs of both the **high concentration of vulnerable and equity-deserving populations in the local area** as well as meet the needs of the many new community members and to support the area's future **population growth**.



Image description: Exterior landscape of the John Innes Community Recreation Centre

What Will Make this Project Successful?

The Park and Community Recreation Centre will serve as a **gathering place** for an array of people, communities and experiences.

The project will be a success if the **diversity of community members** who use the Park and Community Recreation Centre today as well as future community members – feel interested, **welcome**, and **safe** to use these amenities in the future.



Image description: Moss Park sports field area

Policies and Strategies



City Planning



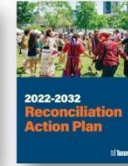
Parks and Facilities



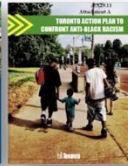
Social Policies



Public Health
Overdose Prevention and
Response



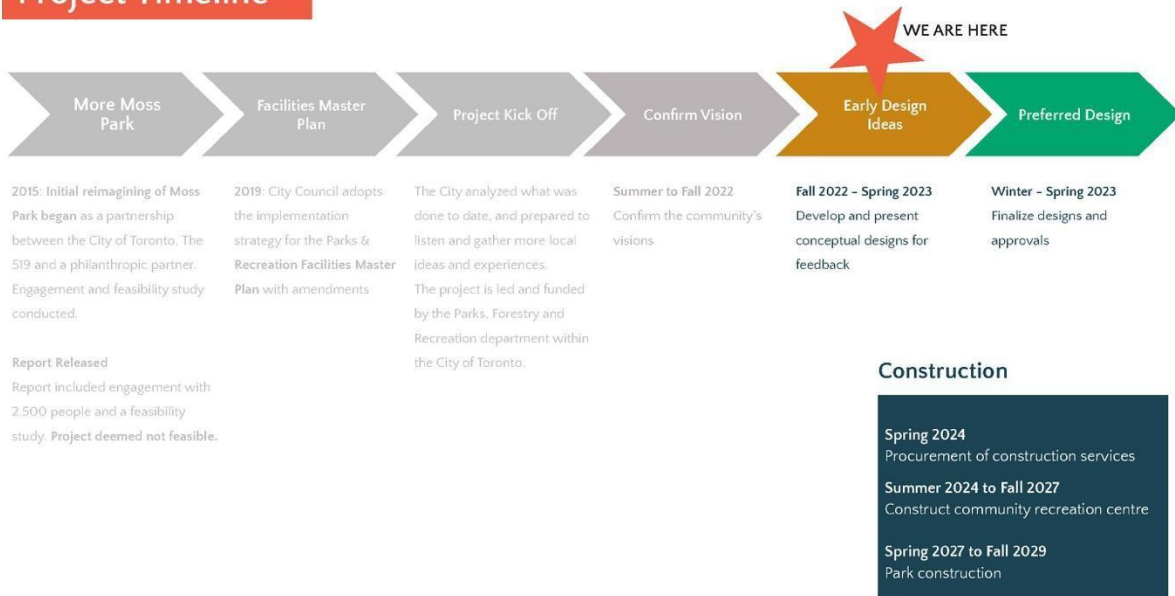
Commitments
with Indigenous
Communities



Commitments with
Black, African and
Caribbean
Communities



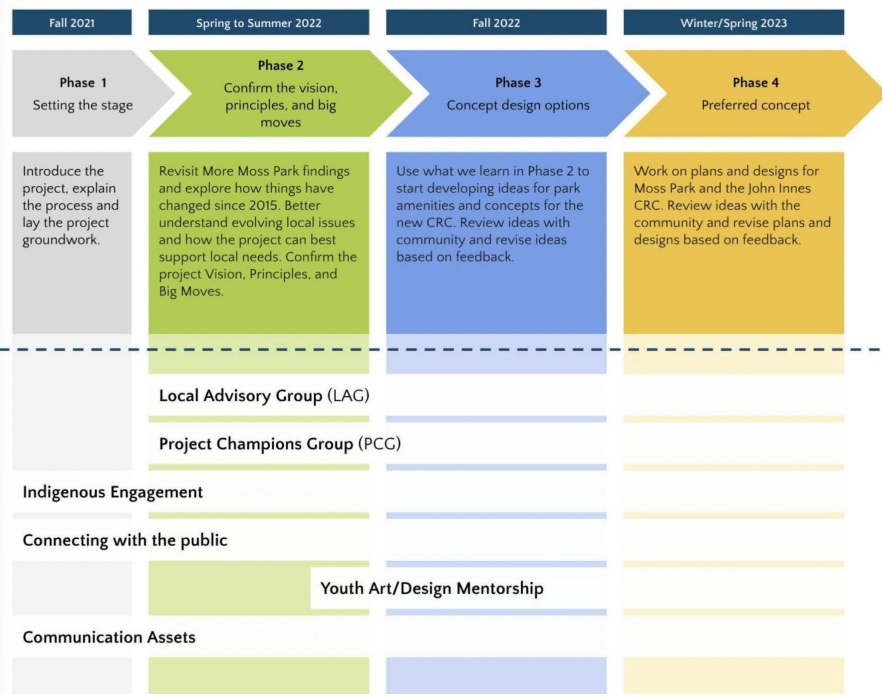
Project Timeline



Engagement & Communications Plan

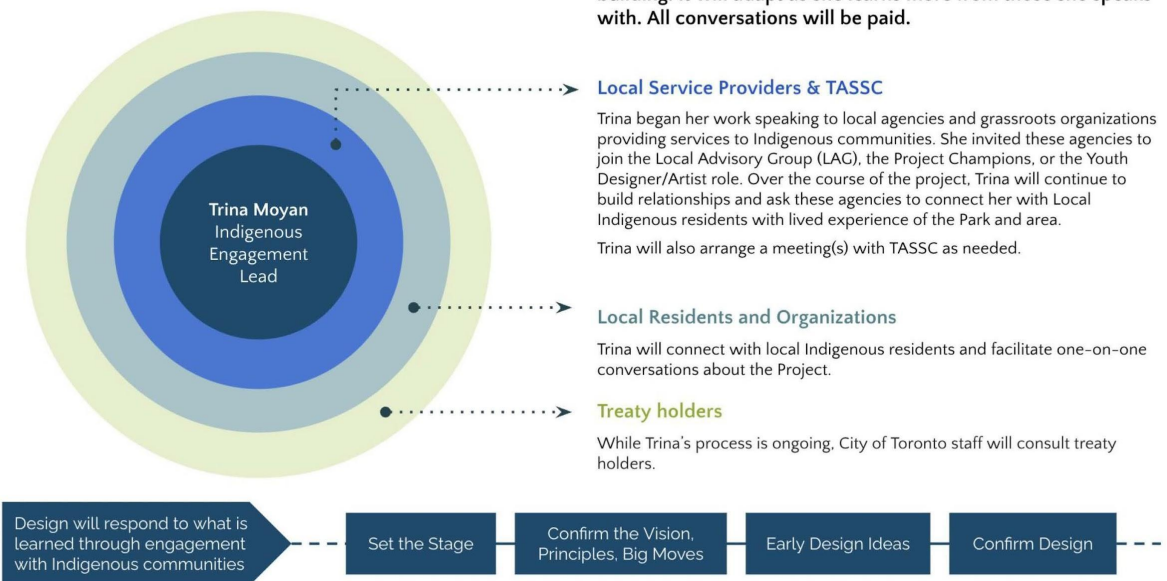
Engagement & Communication Activities

Design will respond to what is learned through engagement



Indigenous Engagement Process

Trina's process is grassroots, flexible, and rooted in relationship building. It will adapt as she learns more from those she speaks with. All conversations will be paid.



What is Open for Influence

What will be included:

COMMUNITY RECREATION CENTRE (C.R.C.)

- A 25-metre 6 lane lap pool
- A leisure/tot pool
- Community, multi-use space
- double gymnasium with a mezzanine running track
- Fitness studios
- Dance studio
- Common & administrative areas, including a large Lobby
- WIFI access throughout
- Gender-neutral washrooms and change rooms
- A green roof or rooftop community access – to be determined
- Service spaces

PARK

- Passive & Active Recreation Amenities including playground, splash pad, community gardens, walking paths, other features TBD such as tennis, basketball etc.
- Safety - sight lines, lighting, animation to create more eyes on the park
- Flexible, multi-use spaces for different activities
- Consider Food security & urban agriculture
- Indigenous Place-keeping elements
- Input from local Indigenous communities
- Enhance ecological and social sustainability and resilience of the park
- Broader connectivity to parks and public realm network

What we can collaborate on:

COMMUNITY RECREATION CENTRE (C.R.C.)

- Opportunities for the included program in the Community Recreation Centre, such as program interrelationships, flexibility of uses, and relationships to the park
- Community multi-purpose room(s) features and uses
- Lane pool features and uses
- Leisure/tot pool features and uses
- Rooftop features and uses
- Lobby features and uses
- Program adjacencies
- Opportunities for key safety features, such as sight lines, visibility, and views

PARK

- Opportunities for park improvements, including seating & gathering areas
- Opportunities for recreation amenities, such as playground, splash pad, community garden, walking paths, tennis, basketball, etc.
- Indigenous placekeeping (to be discussed with local Indigenous communities)
- Opportunities for key safety features, such as sight lines & lighting
- Selection of initiatives to support food security and urban agriculture
- Initiatives to support ecological & social sustainability & resilience of the park



31

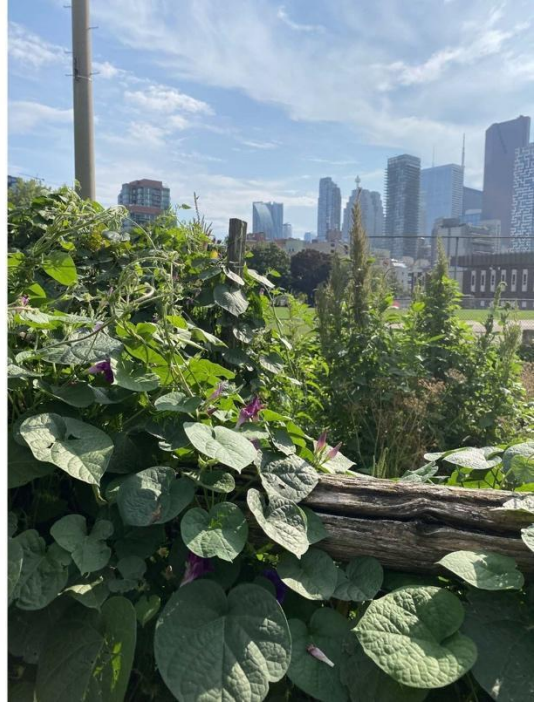
Design Principles

1. Ensure the design of the CRC and park supports **equity, belonging and inclusion**.
2. Ensure the CRC and Park are **accessible to all**.
3. Create a space that makes **safety for all users** a priority.
4. Design an **open, permeable, and transparent** environment.
5. Maximize, enhance, and **improve green spaces**.
6. Celebrate and share information about the **Indigenous history** and character of Moss Park.
7. Contribute to **food security**.
8. Be **sustainable** and carbon neutral.



Big Moves

1. **Maintain a large area of open parkland with frontages onto Queen and Shuter** by building the new CRC along Sherbourne St., over the existing footprint.
2. Establish a **cohesive design language between the CRC and the Arena** and a strong relationship between both buildings and the future Moss Park **subway station**.
3. Optimize opportunities for **rooftop access** to the new CRC.
4. Incorporate spaces for **prayer and ceremony**.
5. Ensure **washroom access** from the **outside of the building**.
6. Create a new urban gateway at Queen and Sherbourne.
7. Integrate **Indigenous placekeeping** throughout the park.
8. Establish a **renewed urban canopy** of trees on Queen Street to match the Shuter edge.
9. **Maintain and enhance key pedestrian pathways** and access points into the park.
10. **Maintain and enhance existing permeable park edges** and protect the existing urban canopy along Shuter Street.
11. **Maintain the strong Sherbourne St. urban built edge** and enhance the relationship between the CRC/Arena/Park and Metrolinx Station with improved visual and physical connectivity and accessibility.
12. **Remove the baseball diamond** to accommodate a wider range of park uses.
13. Add a fenced, dedicated **dogs off leash area** to the park to support growing number of residents with dogs in the intensifying neighbourhood, and to protect other park amenities and park users from conflict with dogs.



What We've Heard to Date



34



Pre- Engagement

“ Key Insights

Honour the Indigenous history of the site

*MCFN history taken into account needs to be done accurately. We prefer for the history to **come from us**.*
 -Mississaugas of the Credit First Nations Representative

I'd like to throw out the possibility of renaming Moss Park as part of the renewal process. The name originates from the original estate of William Allan in Scotland... Perhaps a name that is more respectful of the Indigenous history of the area would be more appropriate as well as an opportunity to signal a new era for the Park.
 - LAG Member

... [this project] presents a possible opportunity to celebrate and share information about the Indigenous history and character of Moss Park.
 - Public Survey Respondent

Honour and celebrate the creek

It would be good to include some commemoration that that the creek was there, that we covered part of mother earth's system, that the creek was a living part of this land.
 -Mississaugas of the Credit First Nations Representative

There are vibrant Indigenous communities in our parks

We have an indigenous encampment [at Allen Gardens] on Sunday evenings there were couples, families, drumming sessions... People are quite comfortable being with a broad spectrum of socio-economic communities. People coexists and get along together in use of green space.
 -Service Provider in Moss Park Neighbourhood

Ensure Indigenous communities can use the space

Success can mean a lot for different people. It is ensuring that the people that already use the park are able to enjoy it and there is no huge impact on their lives. Especially for us that there is a well thought out Indigenous engagement component that values Indigenous presence, history and culture, and it is respectful of our culture and teaching.
 - Indigenous Organization Representative in Moss Park



Public Survey #2

Insights

35% of racialized individuals and Indigenous people made up a moderate proportion of respondents

66% responded that **Indigenous-led programing** is important or very important to incorporate in the **kitchen**.

79% responded that **cooking classes (including culturally specific and Indigenous cooking courses)** as important or very important to have in the **kitchen**.

60% responded that **Indigenous Medicines garden and education** as an important or very important feature and **program for the rooftop**.

62% ranked the importance of having **multi-purpose spaces appropriate for Indigenous ceremonies**.

58% responded that **Indigenous-led woodworking classes** as important or very important to have at the **wood shop**.

59% responded that Indigenous-led programing is an important or very important feature to have on the rooftop.



Toronto

What We Heard about Programming

Dedicated times for Indigenous-only programs such as youth fitness.

Creation of a hub or a room such as an Eshkiniigjik Naandwechigegamig (ENAGB) for Indigenous programming and gatherings.

Future park should incorporate features and programs that are trauma-informed, culturally responsive, and practical.

The opportunity to use the green roof as a training space for those interested in low carbon construction job opportunities.

High quality youth programming, local youth graduates as leaders, educational.

Family programming

Programing to bring people together, group activities are important for community.

Cooking lessons.

Toronto

Indigenous Communities Meeting #1

Facilitated by Trina Moyan,
Indigenous Engagement Lead

13 participants

August 31st, 2022 via Zoom

Discussion Questions:

- How can the future Moss Park and John Innes Community Recreation Centre better serve Indigenous communities? What is important to include in the park to reflect Indigenous Placekeeping?
- What is important for the project team to consider when designing the future of these community spaces
- What features, programs or amenities in the park would help you and your community feel welcome?
- What values and approaches to the park improvements design and operation are important to you?
- Are you interested in stewardship opportunities? What would that involve?

Indigenous Communities Meeting #1

Indigenous Placekeeping

- Incorporating **Indigenous art into the design** of fencing or having seating areas for park users to listen and share.

Spaces for Ceremony

- Include a **medicine garden** space that is gated.
- possibilities to have **smudging ceremonies inside the facility**.
- A permanent sweat lodge would be important

Accessibility and Inclusion

- Ensure the **new park is accessible to all, specifically those who reside in the park or in nearby shelters** that use the park during the day.

Green Roof

- possibilities to have **smudging ceremonies** on the proposed green roof.

Natural Heritage

- Memorialize and respect the life of the trees that will be lost during Metrolinx construction

Public Art Plan

PUBLIC ART PLAN

- The City's Percent for Public Art program requires all new major capital projects to include public art within the project budget.
- Two public art opportunities: one indoors, one outdoors.
- Entire artwork selection process will include 15 paid opportunities for Indigenous artists, advisors, and community members.



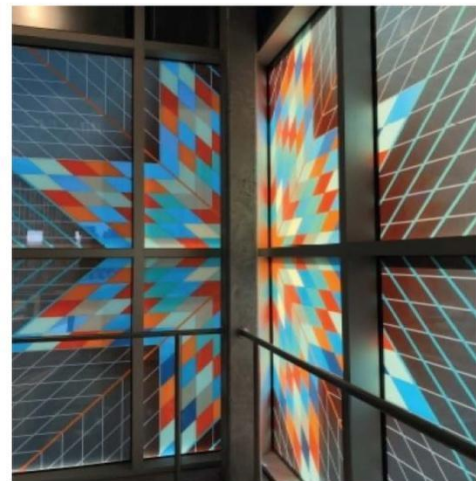
Inukshuk by Kellypalik Qimirpik (Toronto)

ARTIST SELECTION PROCESS



INDIGENOUS CONSULTANT

- IC has been selected; contract will be issued in January 2023.
- Main responsibilities:
 - Advise on themes for the artwork (including consultation and research within Indigenous communities)
 - Appoint Nomination Committee
 - Assemble Jury
 - Facilitate public and community consultation, including Indigenous conversations, around the proposed public artworks.



Star Blanket by Rebecca Baird (Toronto)



OUTDOOR ART

- Likely a sculptural piece (3D) and will act as a landmark, meeting place, and wayfinding device within the park.



Maanjiidowin - The Gathering by David General (Toronto)



Olympic Truce by Corrine Hunt (Vancouver)



OUTDOOR



Thunderbird by Sinámkín by Jody Broomfield (West Vancouver)



Nizhoziibeane sculpture by K.C. Adams, Jamie Isaac, and Val Vint (Winnipeg)



INDOOR ART

- Has the potential to be affixed on predominant wall (2D), or embedded into the building structure itself (3D).



It Takes a Community to Build the Story by Jay Havens (Mississauga)



Indigenous Cultural Markers by David Thomas (Toronto)

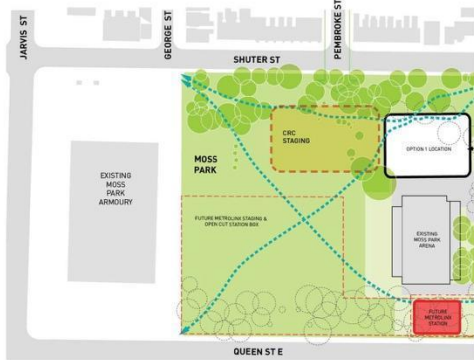


LET'S TALK:

- Design update
- What we heard
- Public art competition



What's coming up...



Location: Southern edge of Moss Park, along Queen St. E.

Join us on Dec. 15th as we honour the lives of these trees and set intentions for the future of these community space.

Lead by Elder Grandma Pauline Shirt

Date: Thursday December 15, 2022

Time: 12:00PM– 1:00 PM

Location: Southern edge of Moss Park (along Queen St. E.)

Accessibility: The ceremony will take place on the grass. If you have any accommodation requests please let us know by replying all to this message.

RSVP: RSVP to Pablo at pablo.munoz@toronto.ca or Trina at trina@weareprocess.ca.

**The ceremony will include light refreshments, coffee and tea*

**While RSVP is not required it would help us be prepared*



How to stay connected

Project Website toronto.ca/mosspark

Contact the project team by sending an email to:

Trina Moyan: trina@weareprocess.ca

Pablo Muñoz: pablo.munoz@toronto.ca



Thank you!