

Isaac Devins Park

Public meeting on the Preferred Design



April 27, 2023, 6 to 8 p.m.

Land Acknowledgement

I'd like to begin by honouring the land that I'm on. If you are not currently in Toronto, I encourage you to learn about the lands you're on.

We acknowledge the land we are meeting on is the traditional territory of many nations including the Mississaugas of the Credit, the Anishnabeg, the Chippewa, the Haudenosaunee and the Wendat peoples and is now home to many diverse First Nations, Inuit and Métis peoples. We also acknowledge that Toronto is covered by Treaty 13 with the Mississaugas of the Credit.



African Ancestral Acknowledgement

The City of Toronto acknowledges all Treaty peoples – including those who came here as settlers – as migrants either in this generation or in generations past - and those of us who came here involuntarily, particularly those brought to these lands as a result of the Trans-Atlantic Slave Trade and Slavery. We pay tribute to those ancestors of African origin and descent.



Meeting Agenda



Round of Introductions



Project recap & “What We Heard”



Isaac Devins Park Preferred Design

- Share & get feedback on the preferred design
- Discuss your suggestions and preferences.



Discussion and Q&A



Next steps and adjourn at 8:00 p.m.

Project Team

City of
Toronto
Parks,
Forestry and
Recreation

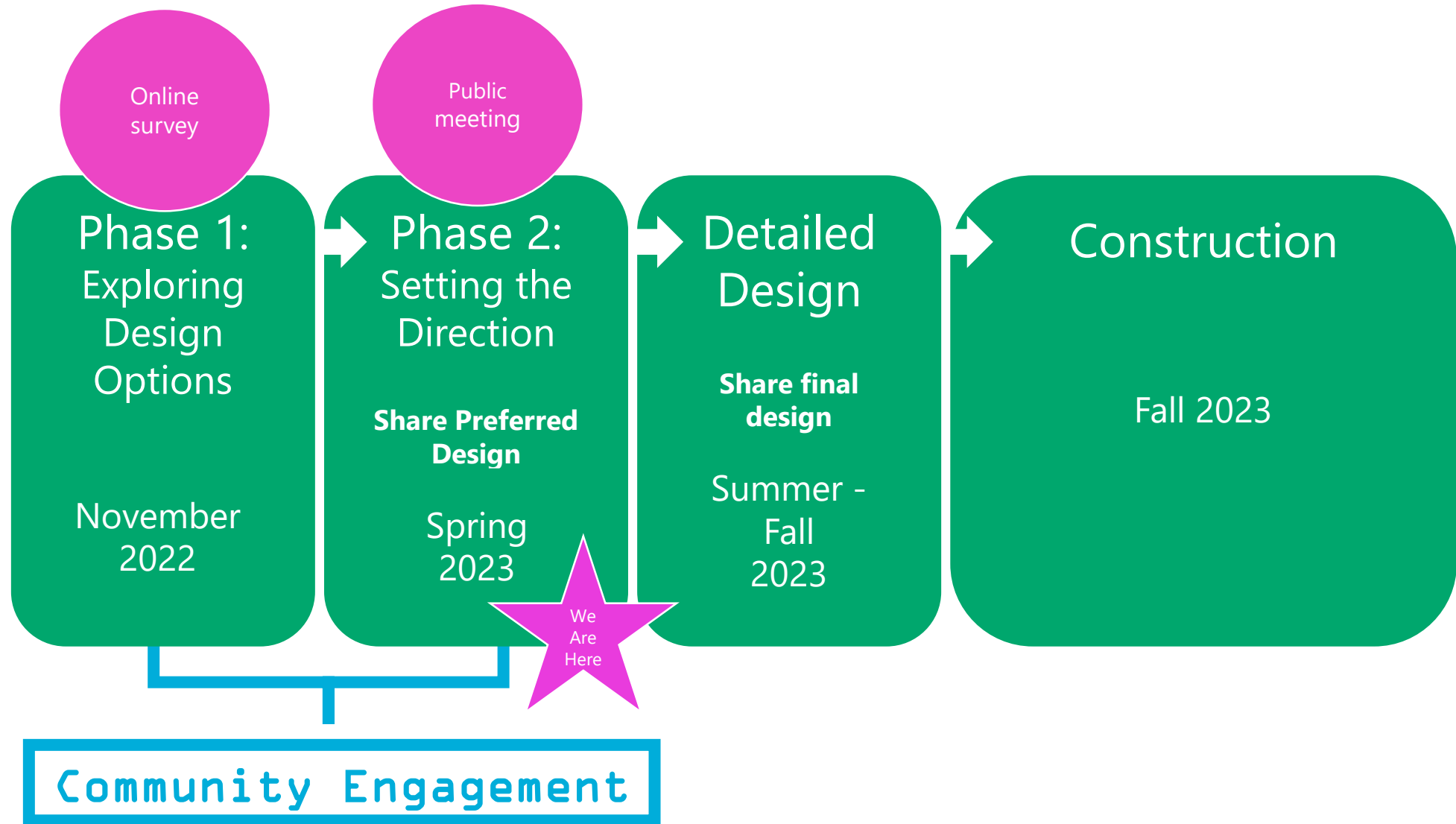
Erika Richmond – Project Officer
Eli Bawuah – Senior Consultation Coordinator
Alex Lavasidis – Senior Consultation Coordinator
Navyata Neeraj – Consultation Coordinator

Design
Consultant
Forest and
Field

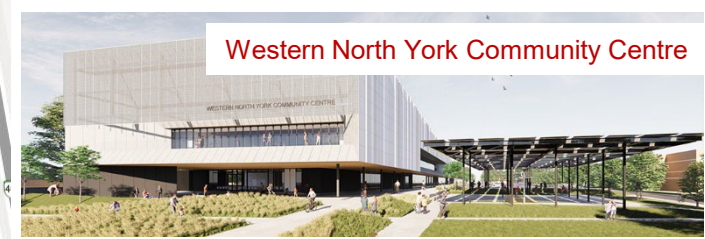
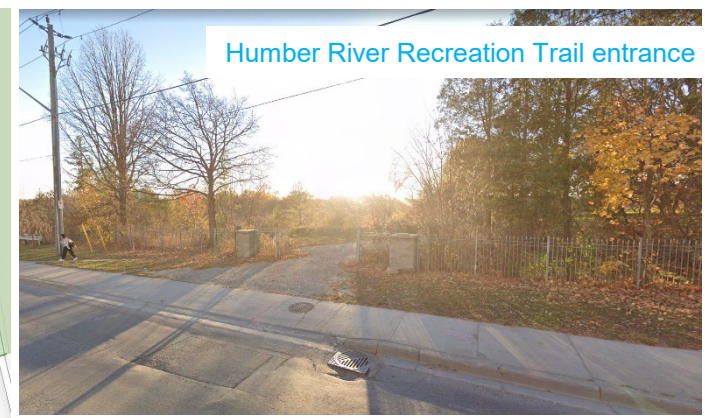
Michelle Lazar – Landscape Architect
Matthew Sweig – Landscape Architect

Project Overview

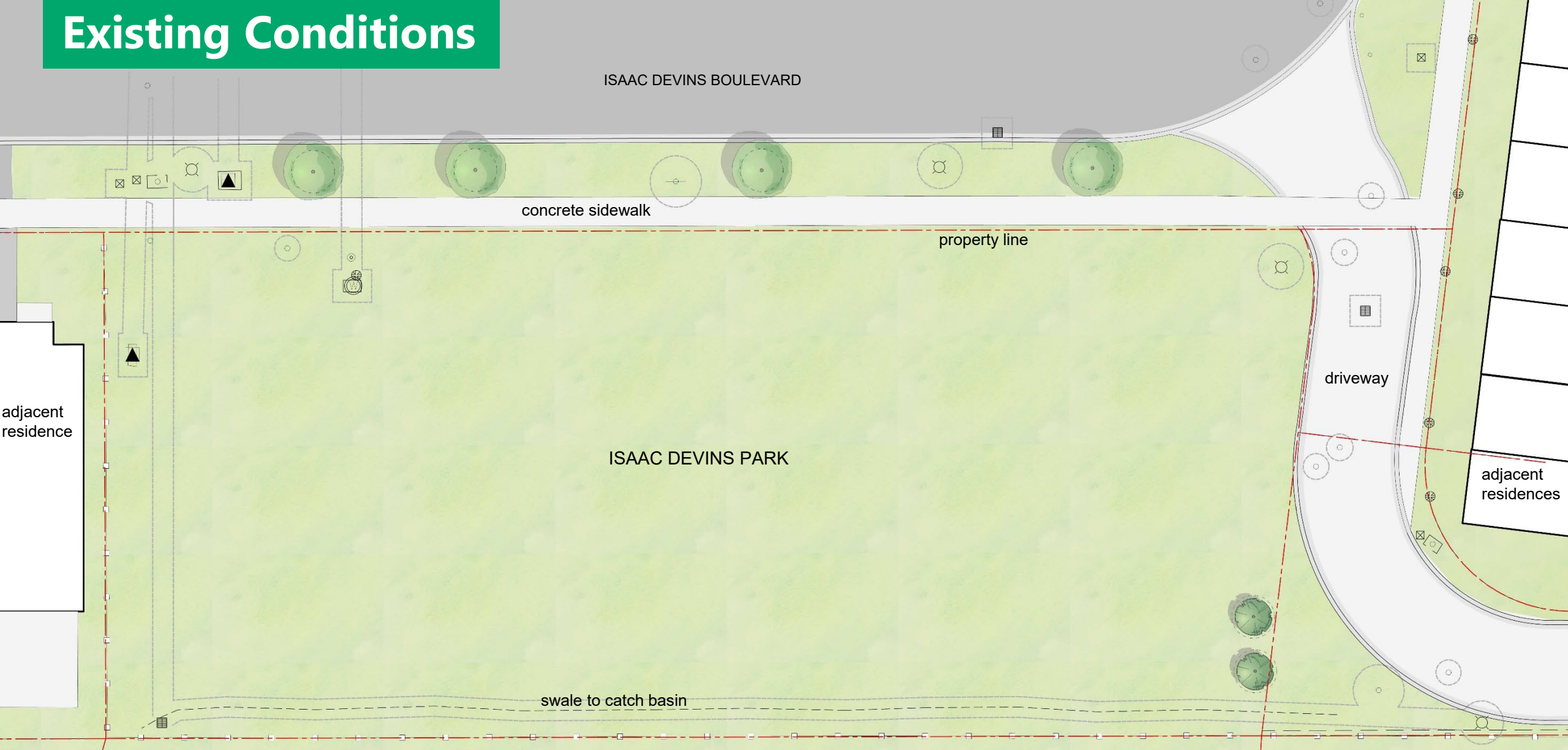
Project Timeline



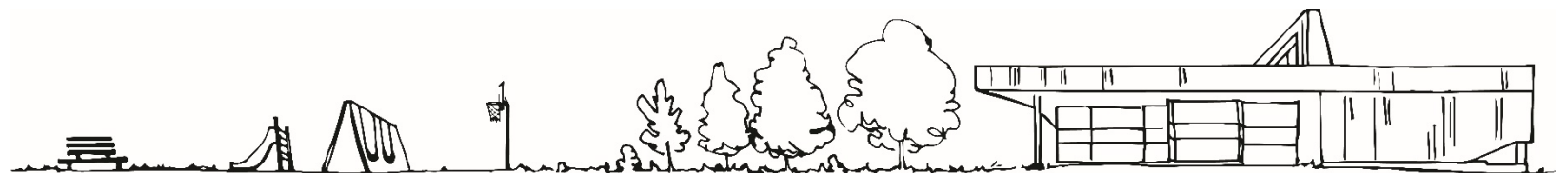
Existing Context



Existing Conditions



Existing Conditions

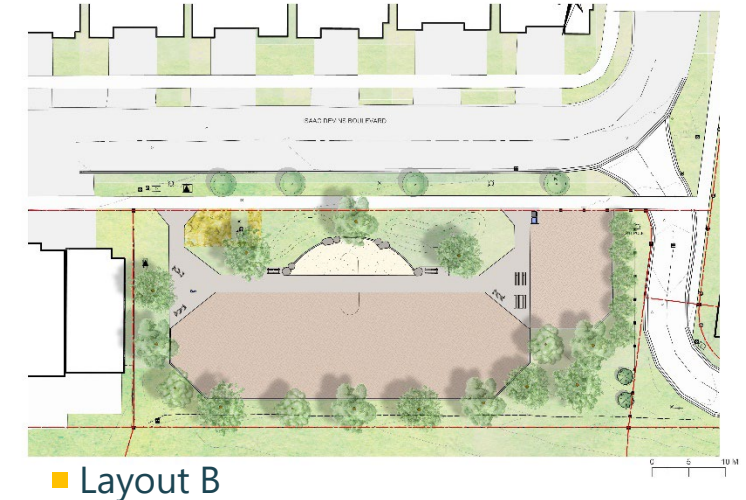
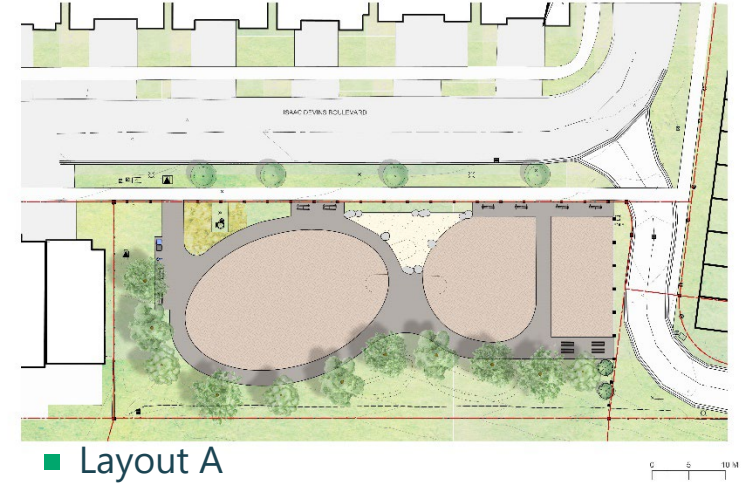
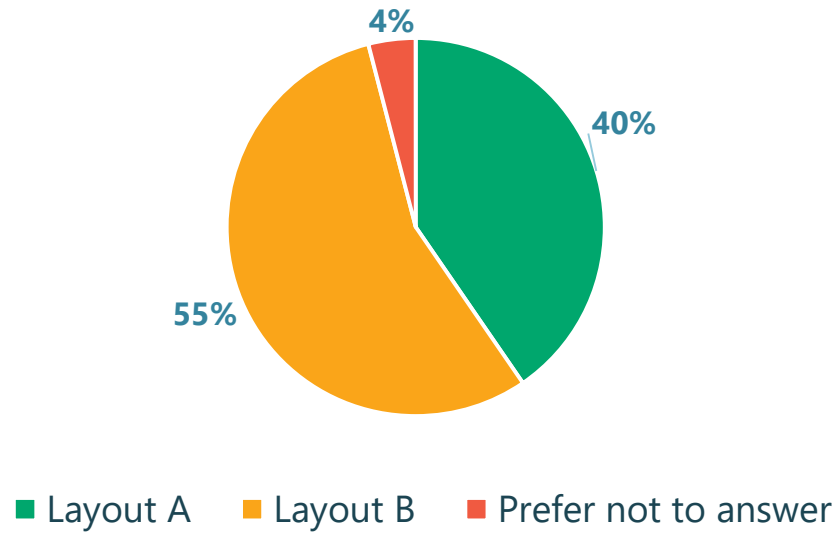


Online Survey – what we heard

161

- 161 Survey Respondents within a 500 catchment area surrounding the park site
- Survey launched on Dec 5th, 2023 and closed Dec 19th

Preferred Park Layout

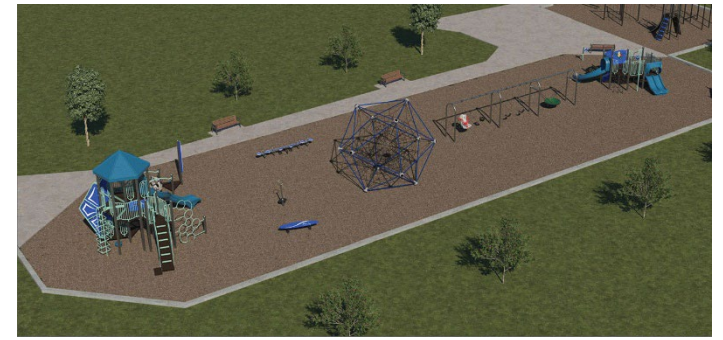
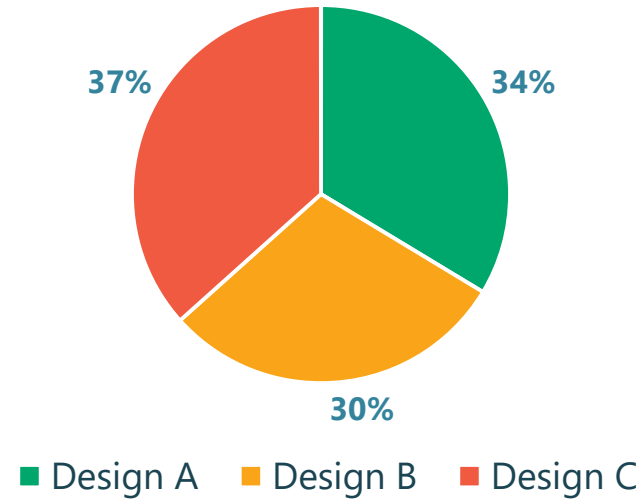


Online Survey – what we heard

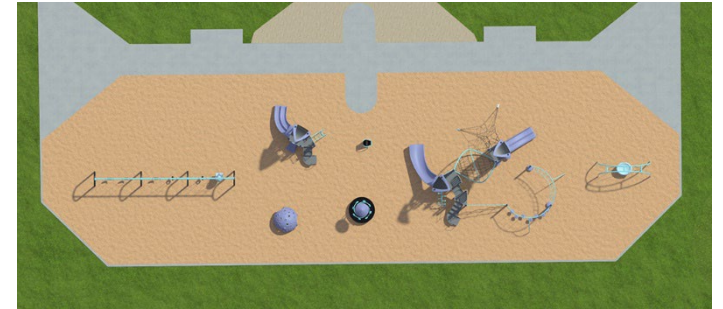
161

- 161 Survey Respondents within a 500 catchment area surrounding the park site
- Survey launched on Dec 5th, 2023 and closed Dec 19th

Preferred Playground Design Option



Layout A



Layout B



Layout C



Online Survey – what we heard

Park Amenity Equipment

- The top 5 most voted popular park amenity equipment were playground equipment for ages 5 to 12 (59%), closely followed by benches (55%), fitness equipment (51%), trees (50%), and playground equipment for ages 2 to 5 (44%)

Seating

- The survey results reveal that 74% of participants prefer benches (27% neutral and 18% don't prefer), while 58% prefer picnic tables (25% neutral and 18% don't prefer), closely followed by 55% for seatwalls (20% neutral and 6% don't prefer)

Playground Colours

- A majority of participants (51%) selected a preference of bright colours, such as yellow, orange and purple for the new playground. A total of 39% of participants chose earthy colours, while 11% did not have a preference

Playground Equipment

- The playground equipment that received the most votes in the survey was slides (70%), followed by climbing structures (68%), the senior play structure for ages 5 to 12 (56%), monkey bars (41%) and the junior play structure for ages 2 to 5 (41%)

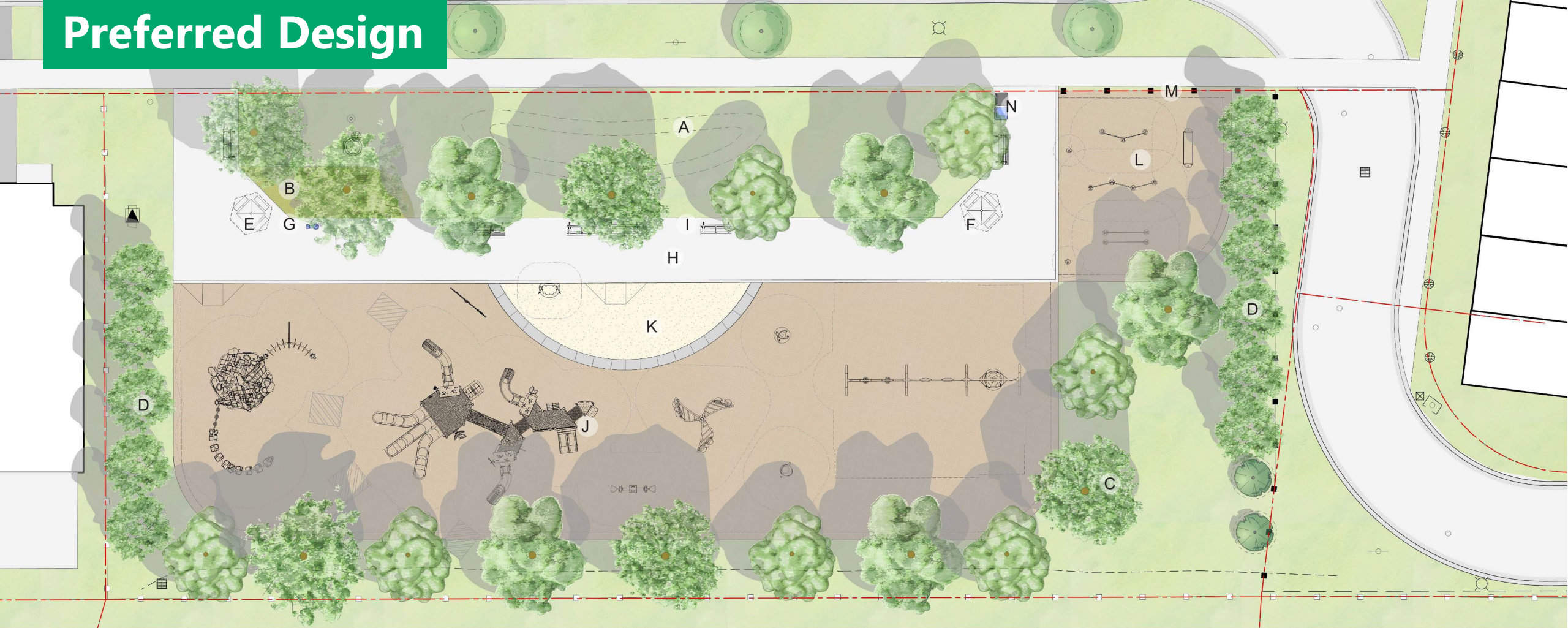
Fitness Equipment

- The survey results reveal the fitness equipment ranked by participants from most preferred (1) to least preferred (6) to be, in order: step benches (21%), push-up and pull-up bars (21%), long bench (18%), parallel bars (17%), hurdles (13%) and information panels (10%)



Isaac Devins Park Preferred Design

Preferred Design



LEGEND

A	Open lawn with berms	F	Picnic table with shade umbrella	K	Sand area with concrete curb and rock border
B	Perennial planting bed	G	Water fountain/bottle filler	L	Fitness area
C	Tree planting	H	3m wide concrete walkway	M	1.2m high metal fence
D	Evergreen hedgerow	I	Bench	N	Waste/recycling bins
E	Accessible picnic table with shade umbrella	J	Play equipment area		



Precedents



Low-maintenance, all-season native buffer planting featuring lavender, coneflower, and ornamental grasses



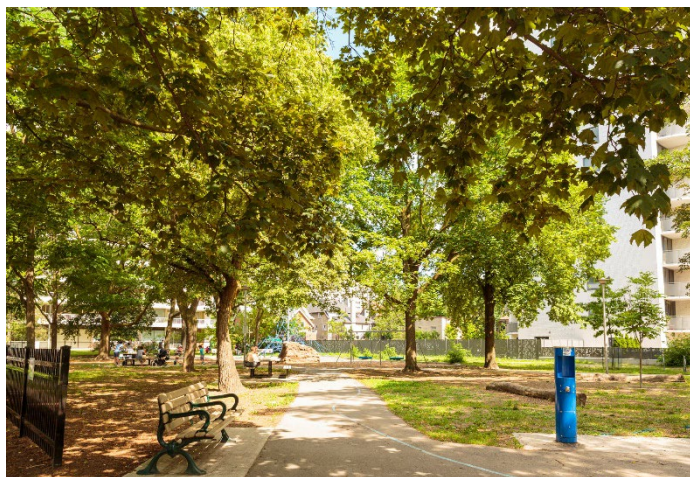
Evergreen hedge to buffer adjacent residences.



Grassy mounds provide views and shelter



Natural sand play with armourstone edge providing additional seating



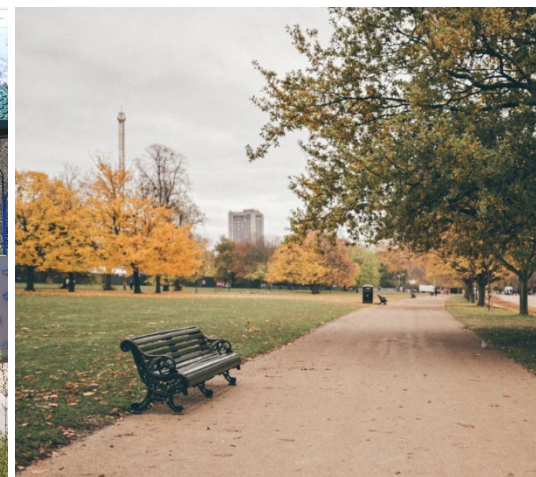
Canopy trees and bottle filler



Tables with umbrellas



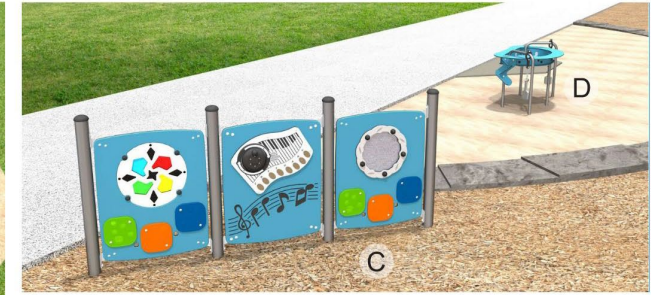
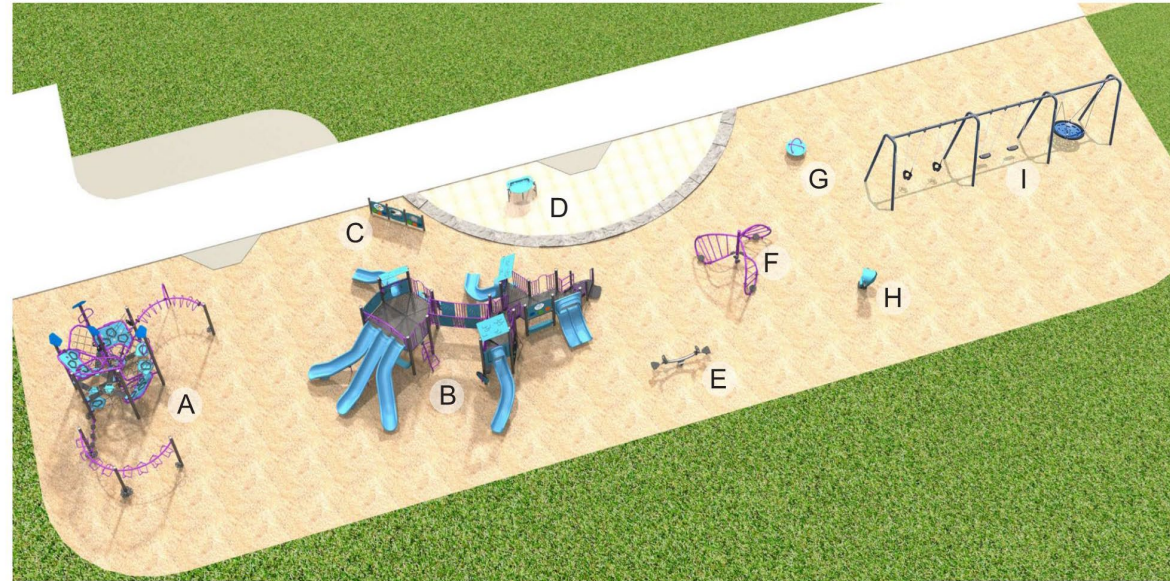
Wide accessible concrete pathway with seating



Playground equipment views

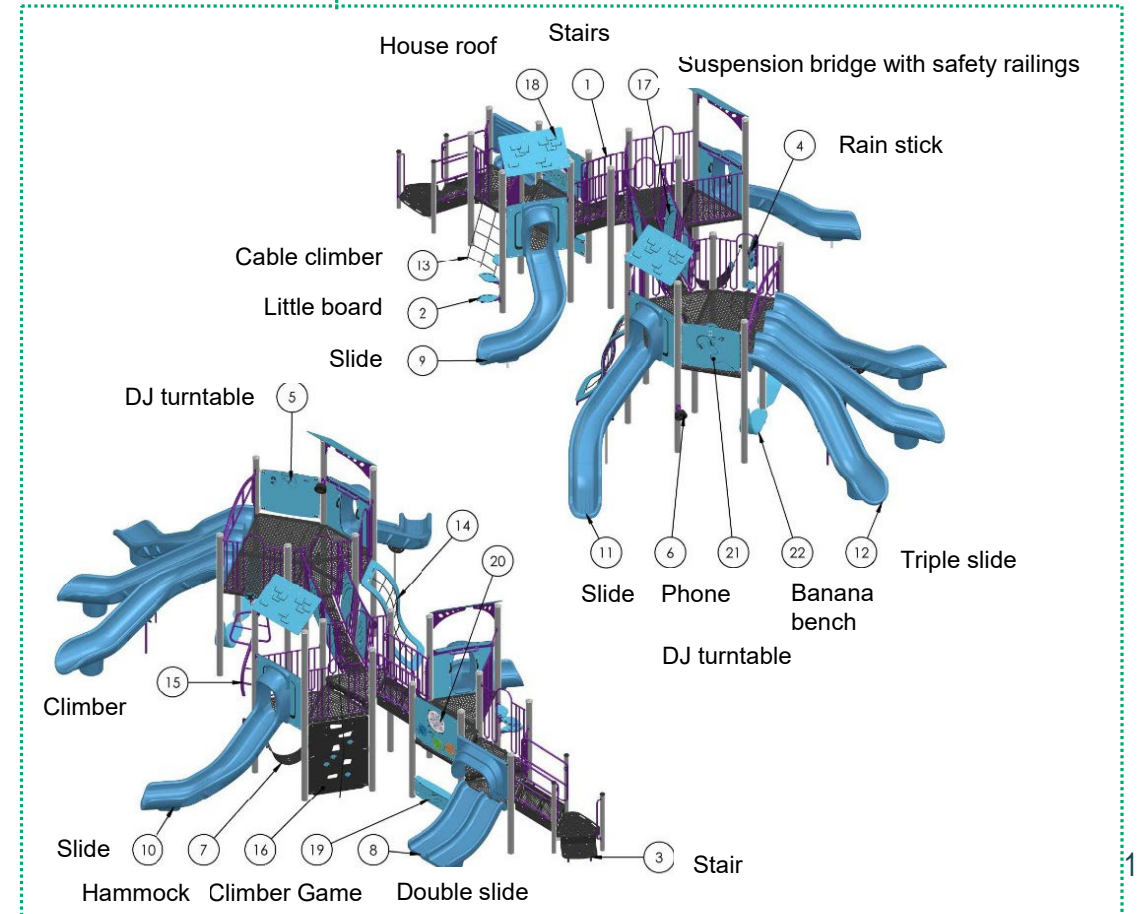
LEGEND

- A Volte Climber with monkey bars
- B Play structure
- C Creative space
- D Accessible sand table
- E Teeter totter
- F Twist climber 3'
- G Xyra-45 (spinner)
- H Rocking nest (calming seat)
- I 3 bay arch swing



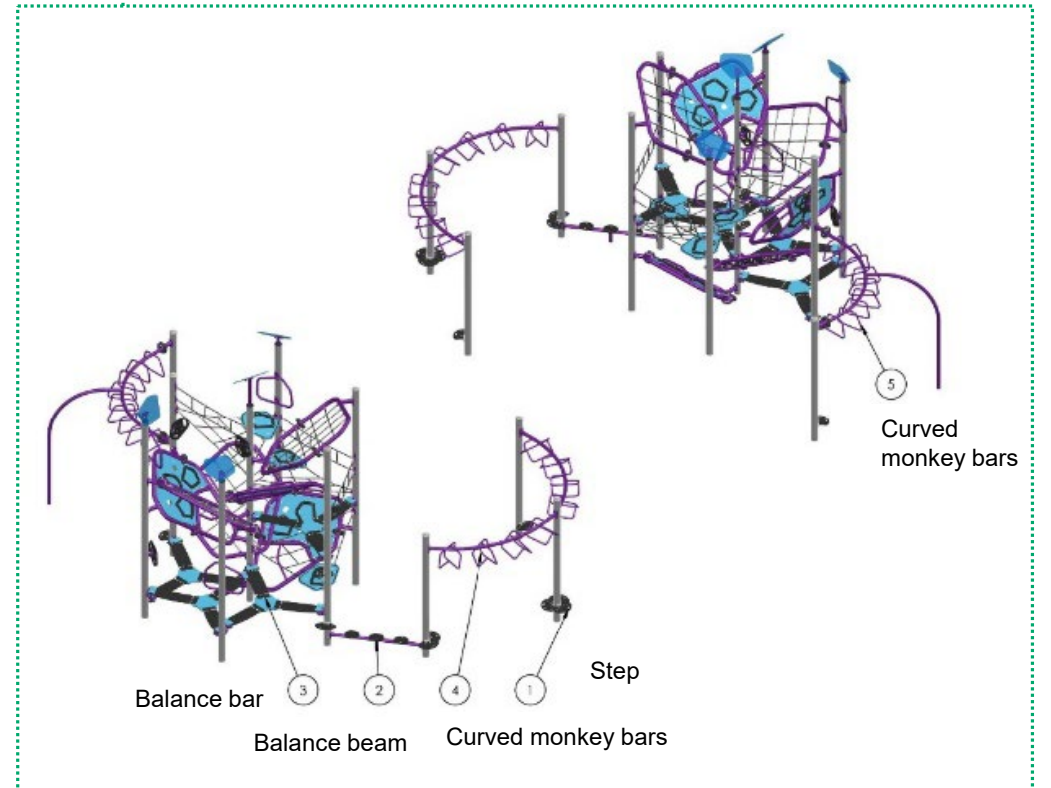
Playground equipment views

Play structure



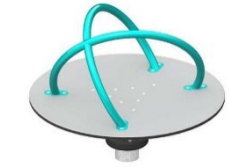
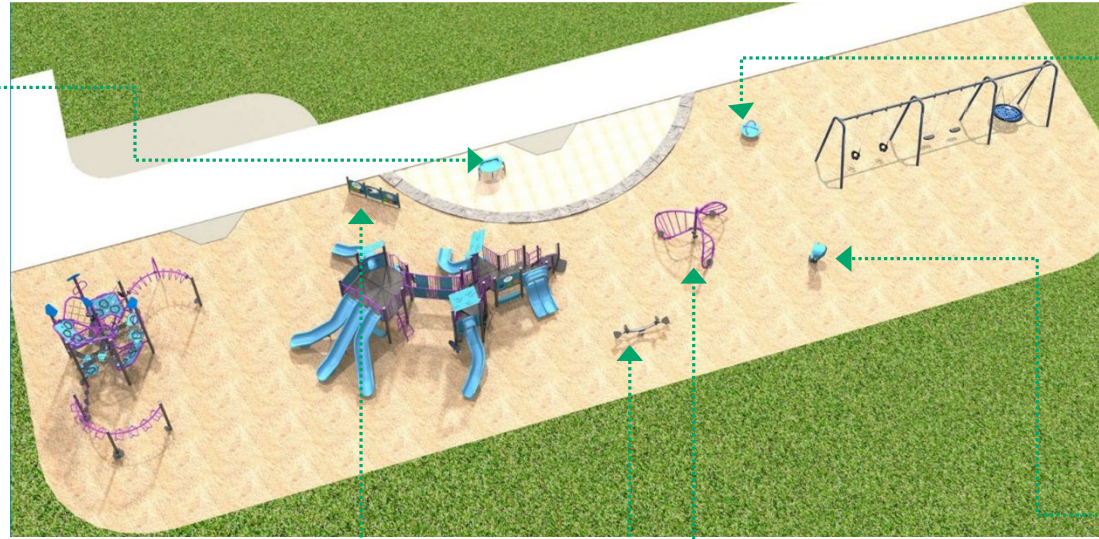
Playground equipment views

Volte Climber with monkey bars



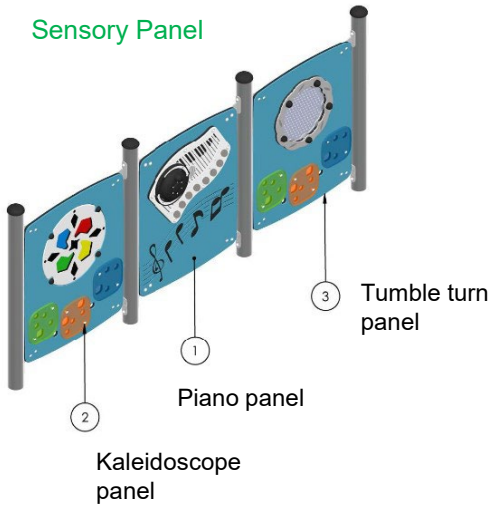
Playground equipment views

Accessible sand table



Xyra-45 spinner

Sensory Panel



Rocking nest
(peaceful independent play)

Teeter totter



Twist Climber 3'

Fitness area

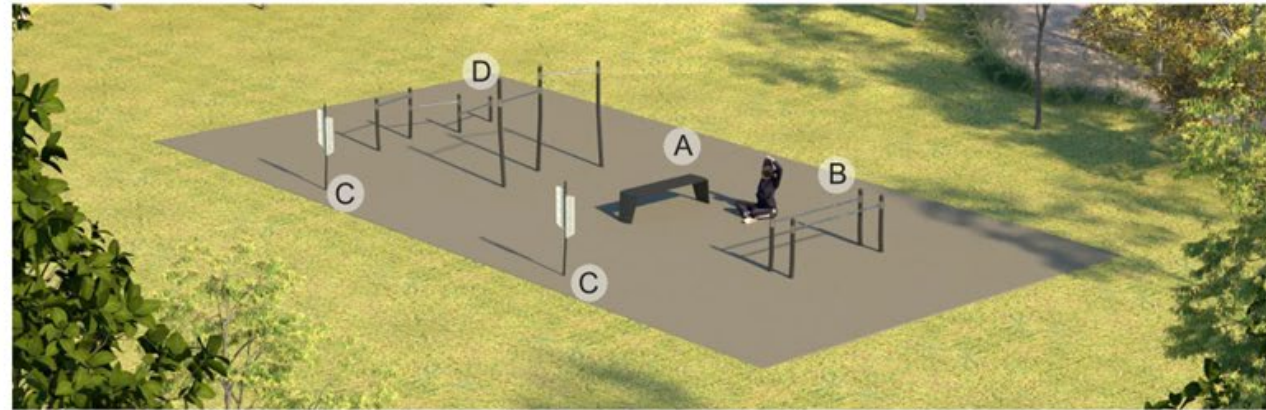
LEGEND

A Long bench

B Parallel bars

C Information panel

D Pull up bars



Q&A

Next Steps

Next Steps

- Members can send additional ideas, comments, or suggestions to Elijah.Bawuah@Toronto.ca
- Staff will compile a written summary of the meeting and post on the project website.
- The design team will consider feedback from the meeting to create the final detailed design for the park.

Thank you