

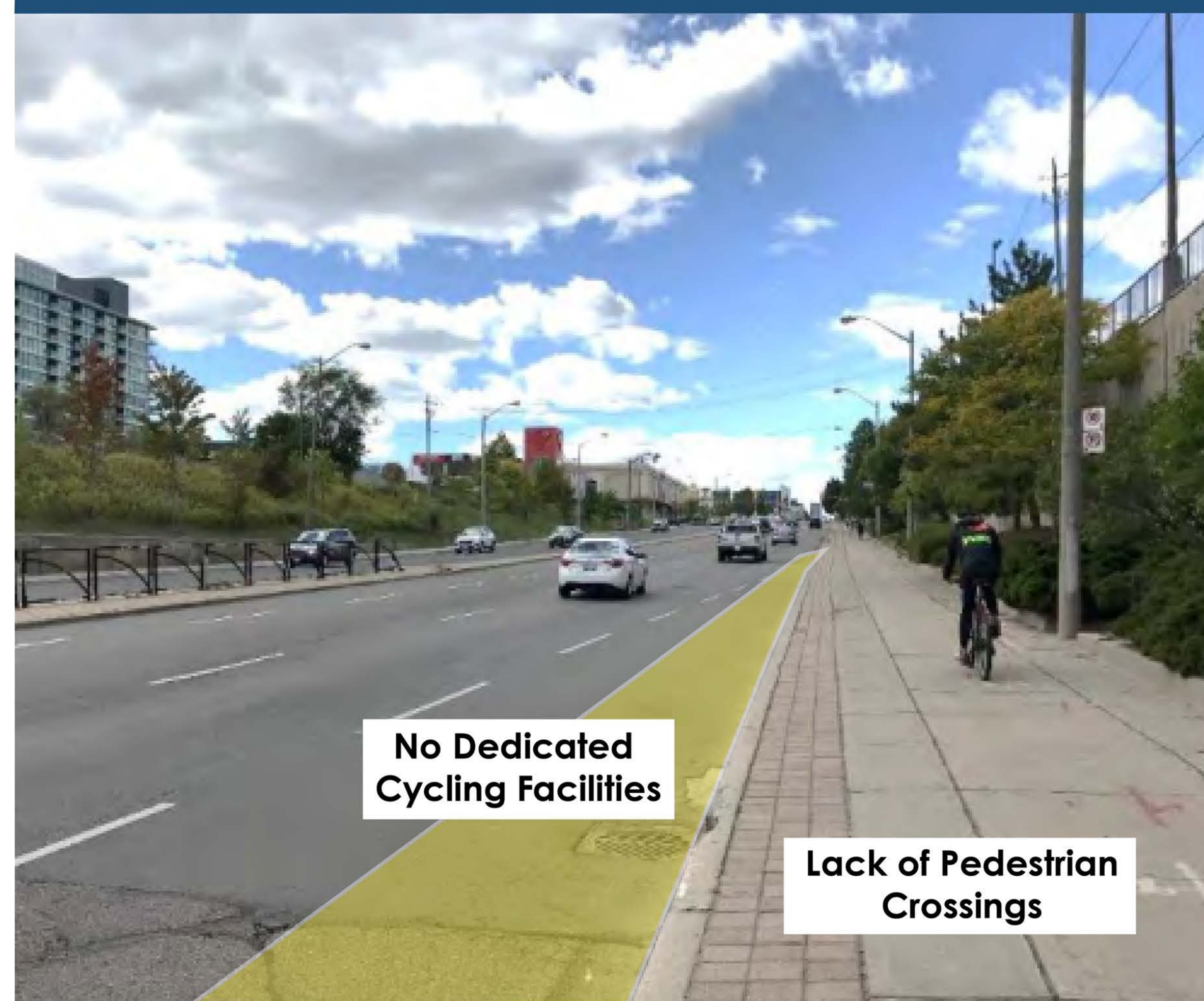
Mobility Safety Review



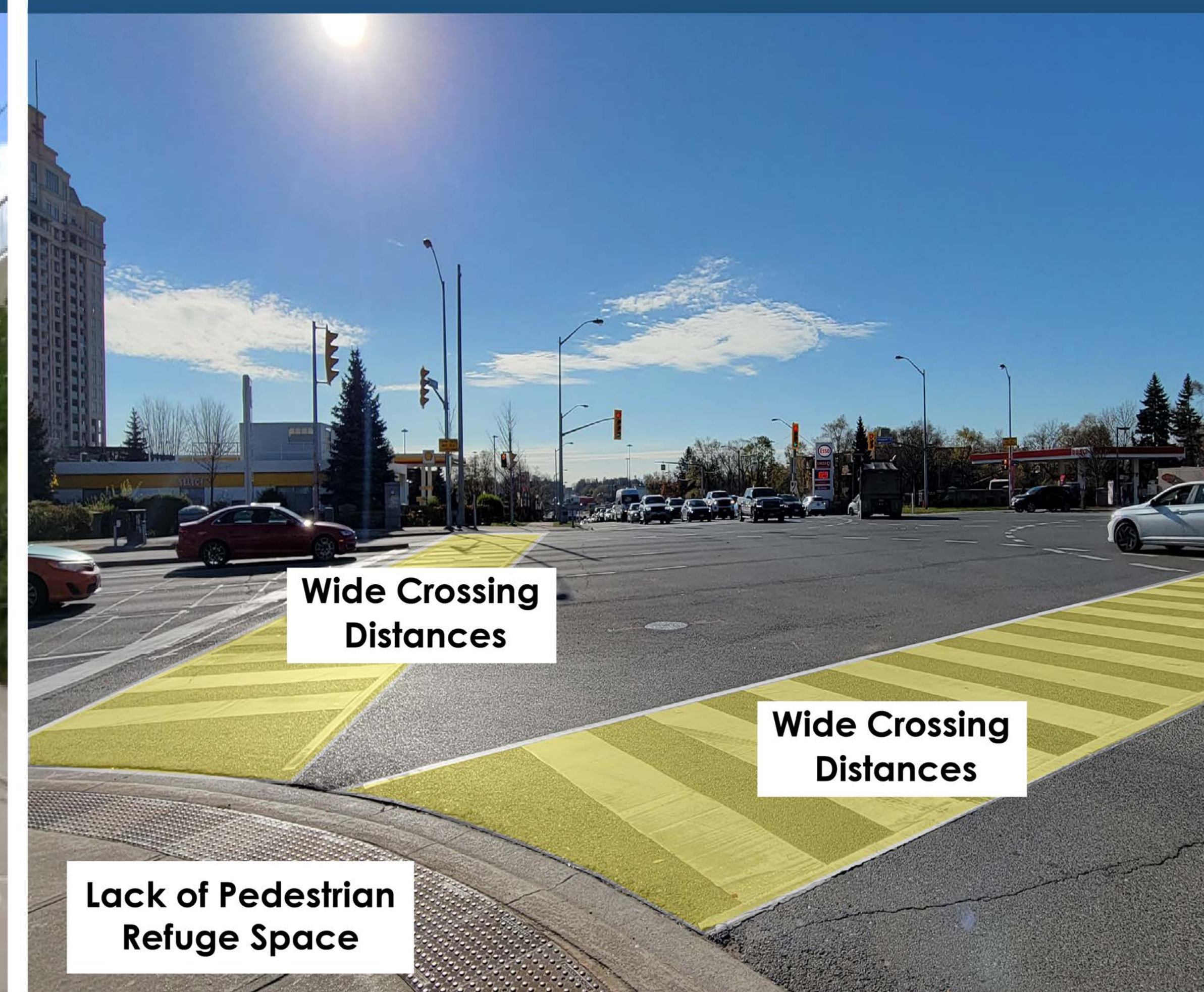
High vehicle speeds and narrow sidewalks



Poor pedestrian & cycling environment



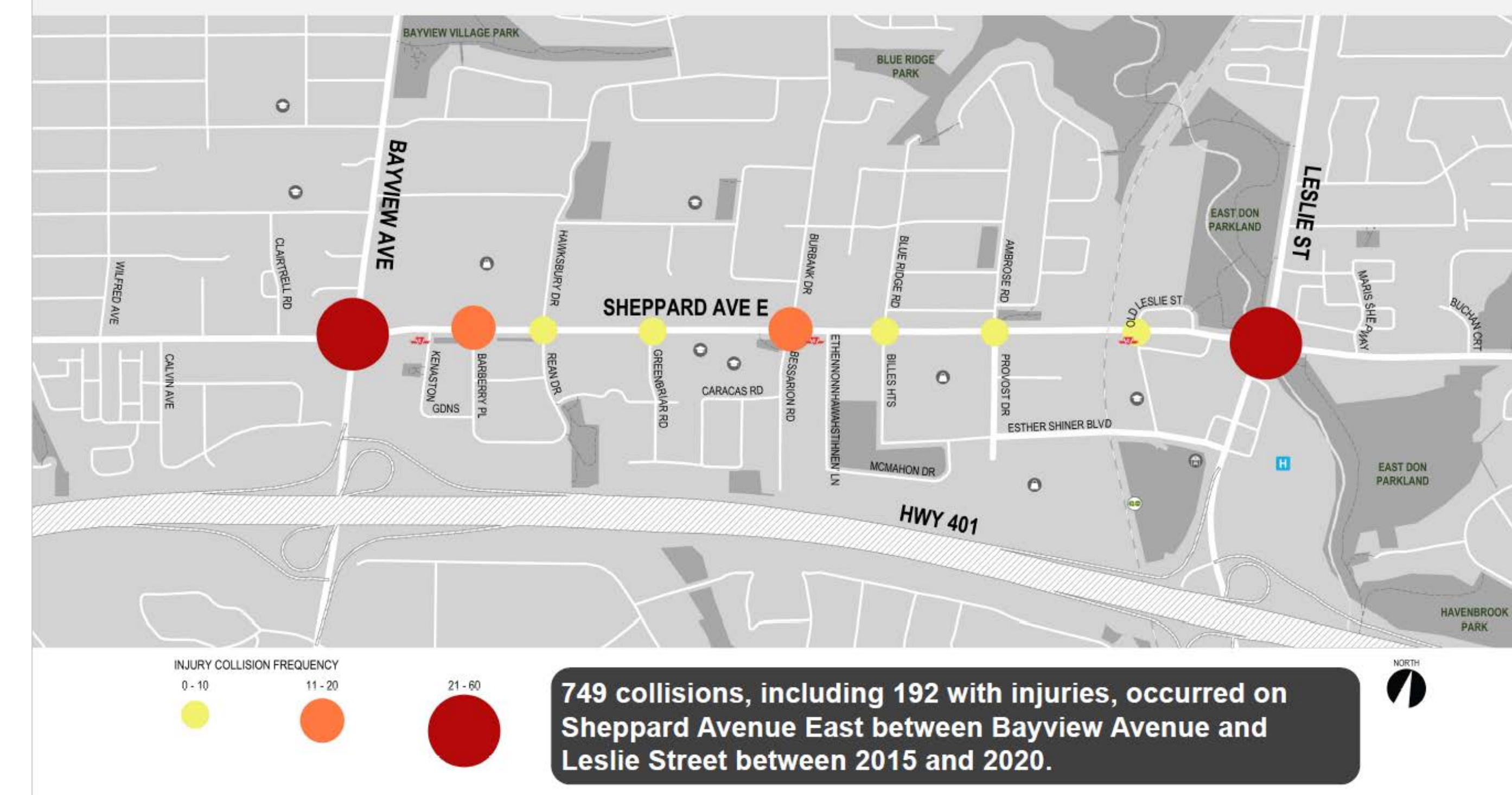
Large pedestrian crossings & delays



65% of of the collisions in the Study Area occurred at Leslie Street and Bayview Avenue along Sheppard Avenue East.

Multiple pedestrian collisions were recorded at four intersections, including Leslie Street, Bayview Avenue, Burbank Drive/Bessarion Road and Greenbriar Road.

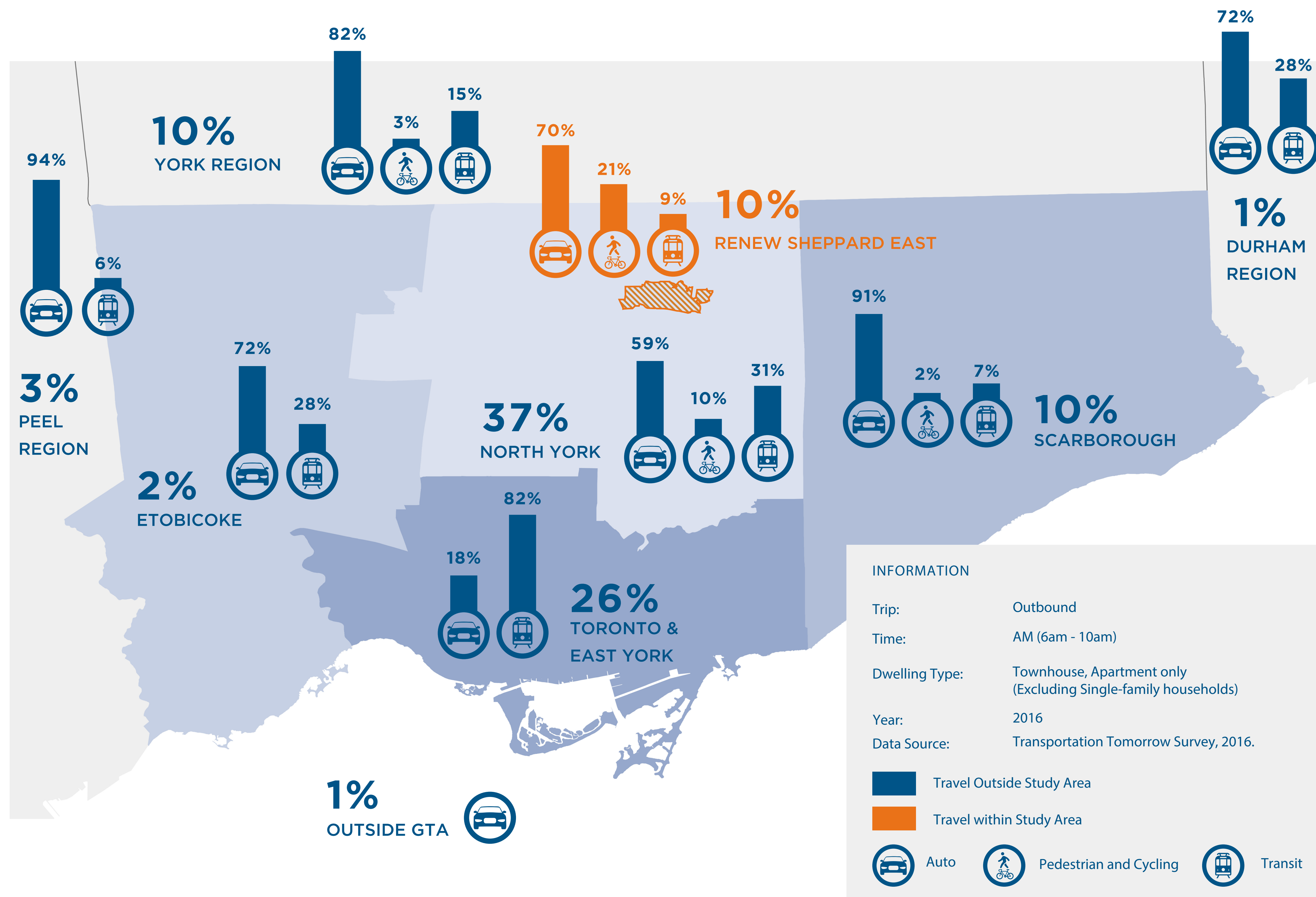
Existing Conditions | Collisions



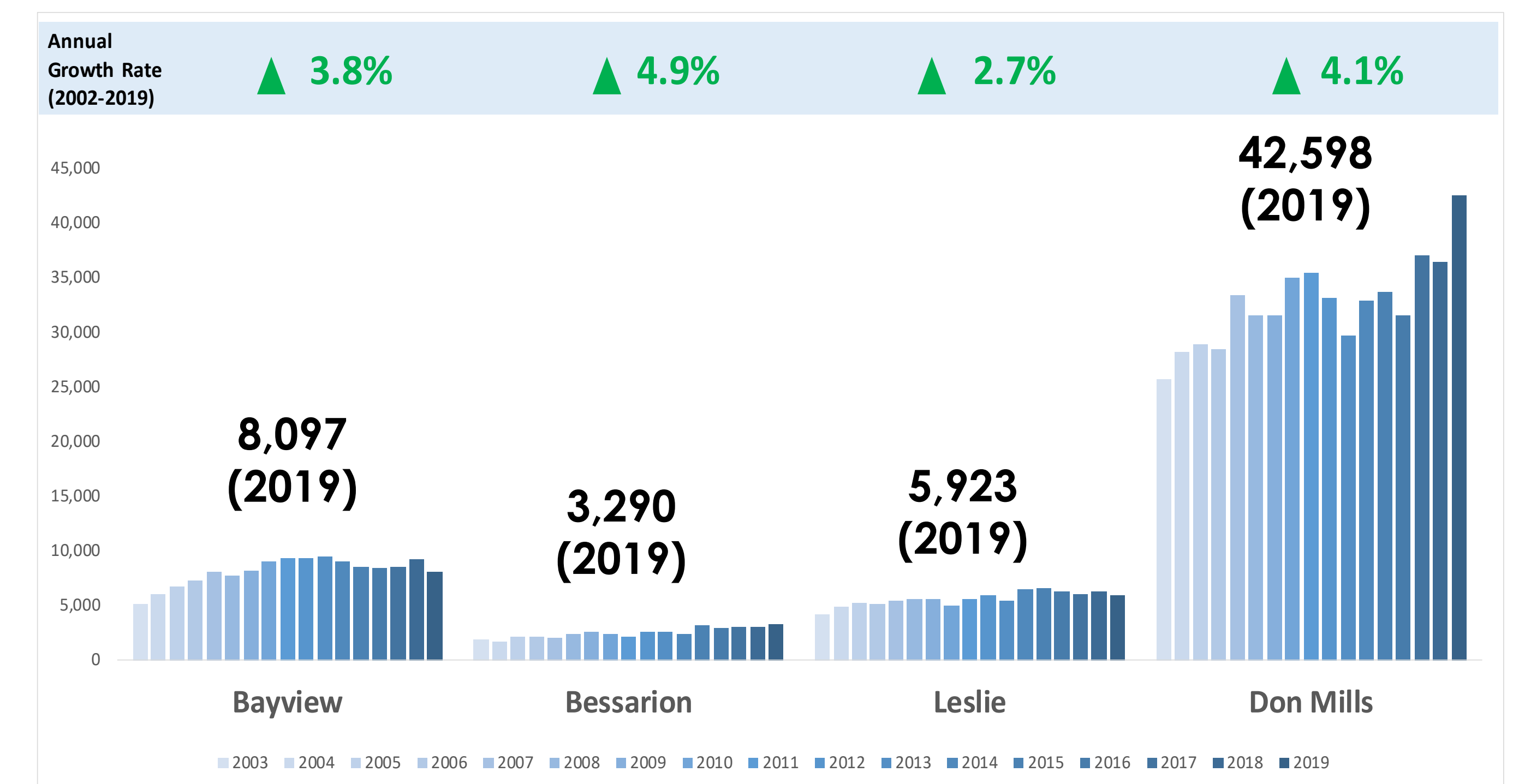
Source: Sheppard Ave East Complete Street

Mobility Projects & Information

Trip Distribution - ReNew Sheppard East (Outbound 6-10AM)



TTC Ridership Annual Growth Rate 2003-2019



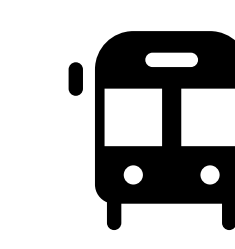
Data Source: TTC Station Platform Usage Counts Report. Weekday All-Day Volumes. Toronto Transit Commission, 2019.

Opportunities-Planned Improvements



Oriole GO Station Improvements

- **Oriole GO Station Improvements** - The existing Oriole GO station is proposed to be permanently relocated to provide direct interchange connection to the Leslie TTC Subway Station at Sheppard Avenue East.



RapidTO: Bus & Streetcar Priority

The City of Toronto and Toronto Transit Commission (TTC) are enhancing bus and streetcar transit across Toronto by studying and implementing transit priority solutions that improve service reliability. The study will include the following phases:

- Phase 1: Understanding Your Priorities (Fall 2021)
- Phase 2: Identifying Top Roadways (A report on the findings of Phase 2 will be presented to Executive Committee and City Council in early 2023)
- Phase 3: Roadway-Specific Studies (2022-2032)

<https://www.toronto.ca/services-payments/streets-parking-transportation/transportation-projects/rapid-to/>

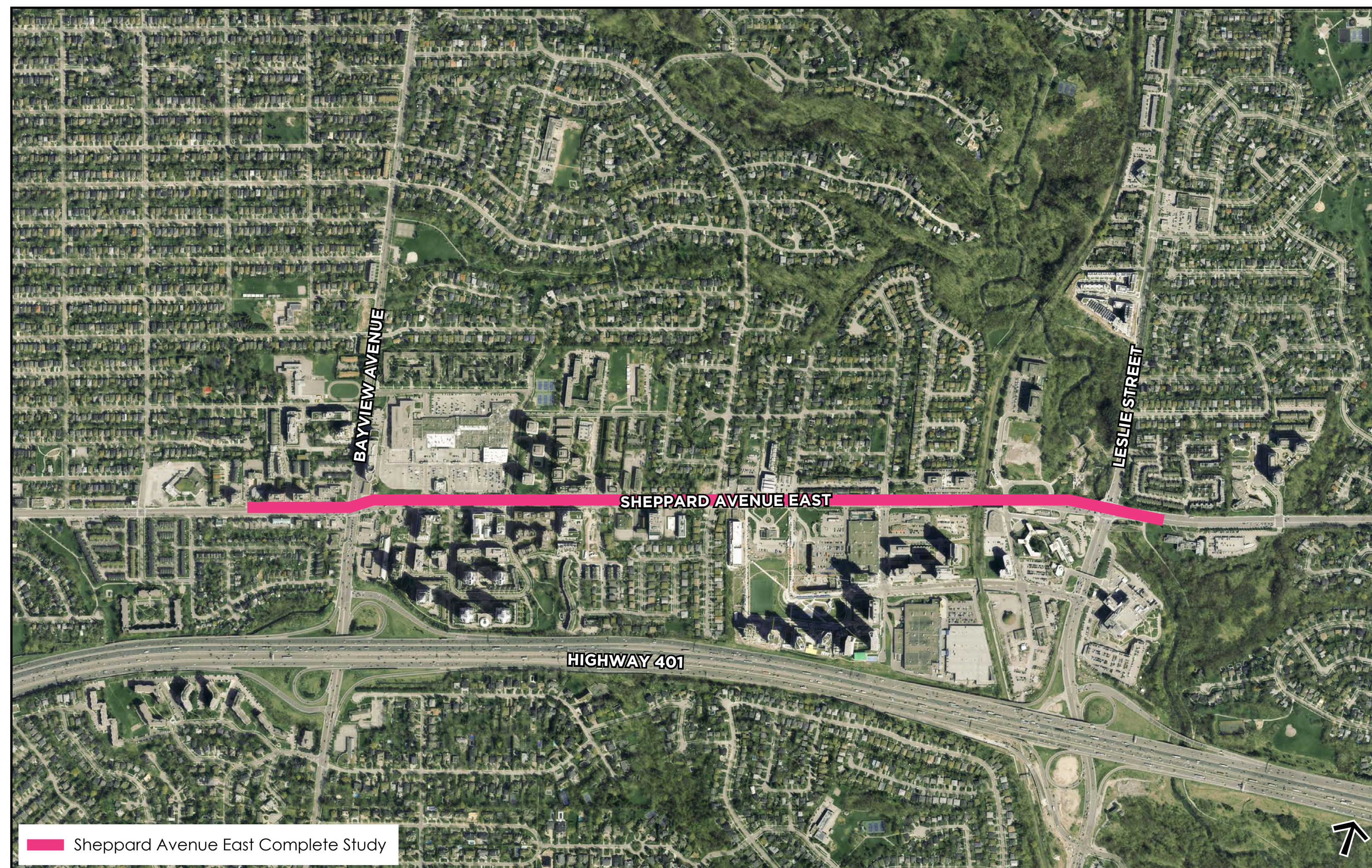
ReNew Sheppard & Sheppard Avenue East Complete Street



City Projects:

Sheppard Avenue East Complete Street Study

Transportation Services is currently undertaking a state of good repair road reconstruction project.

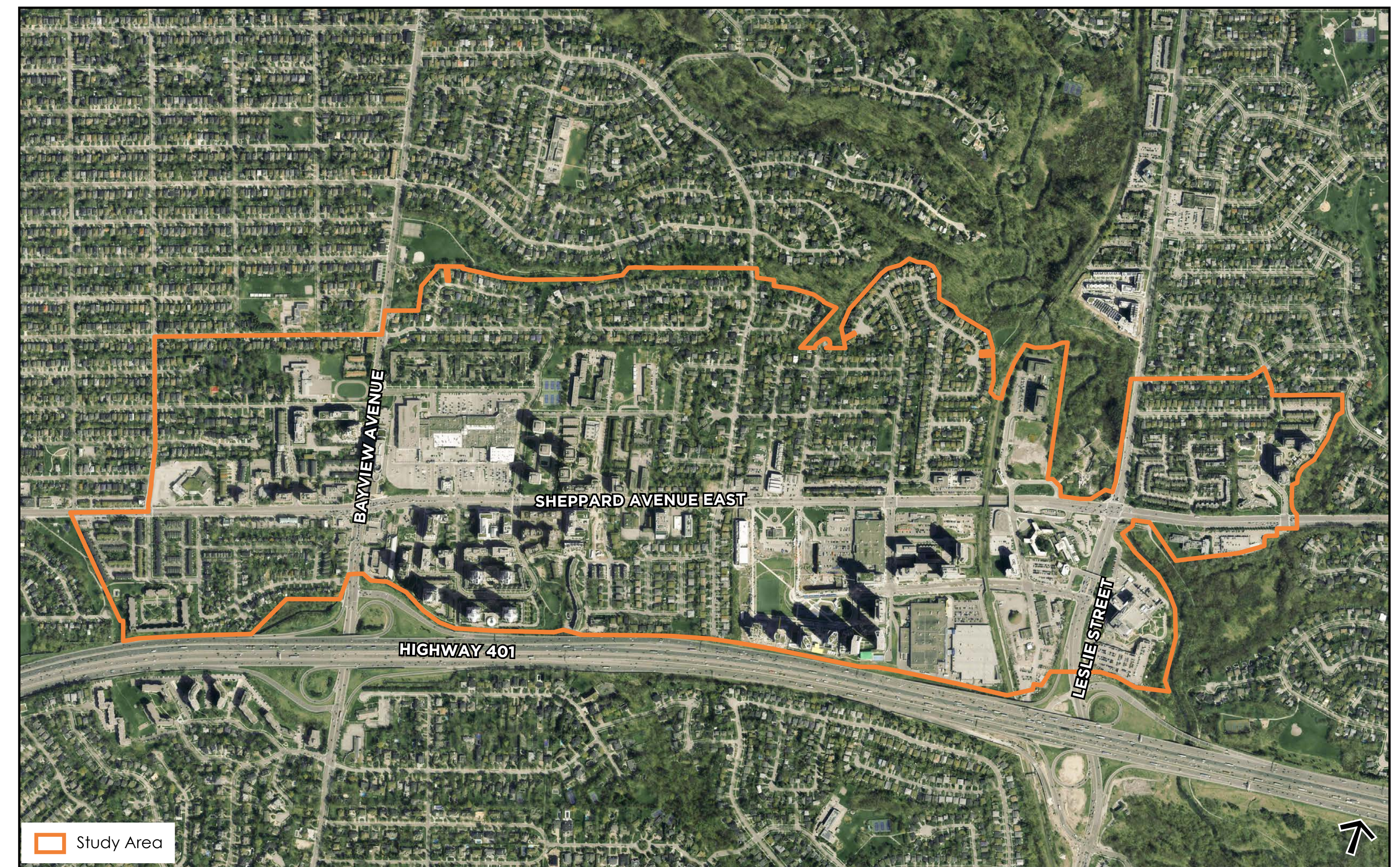


For further information:
toronto.ca/SheppardAvenueEast

TODAY'S FOCUS

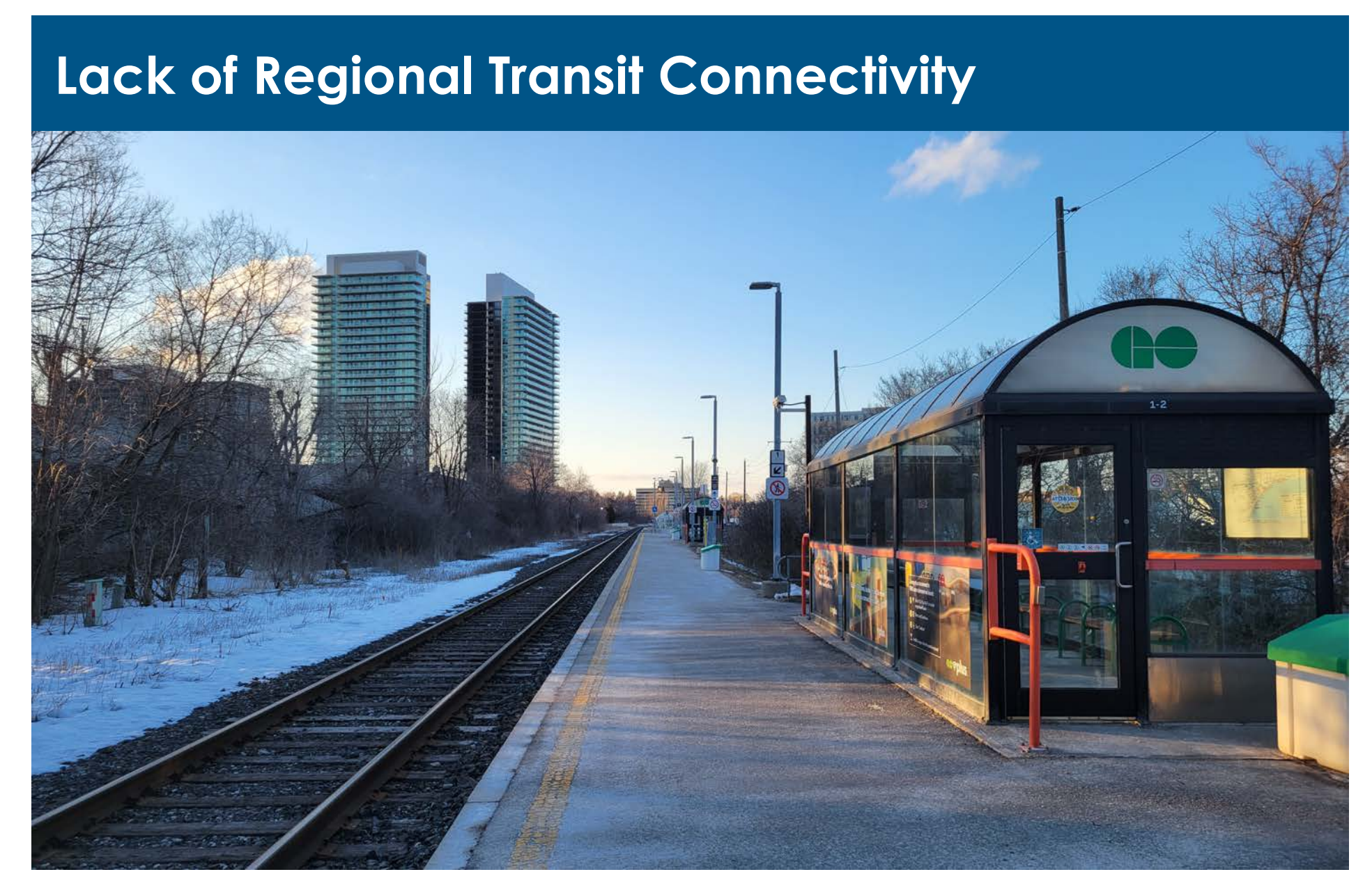
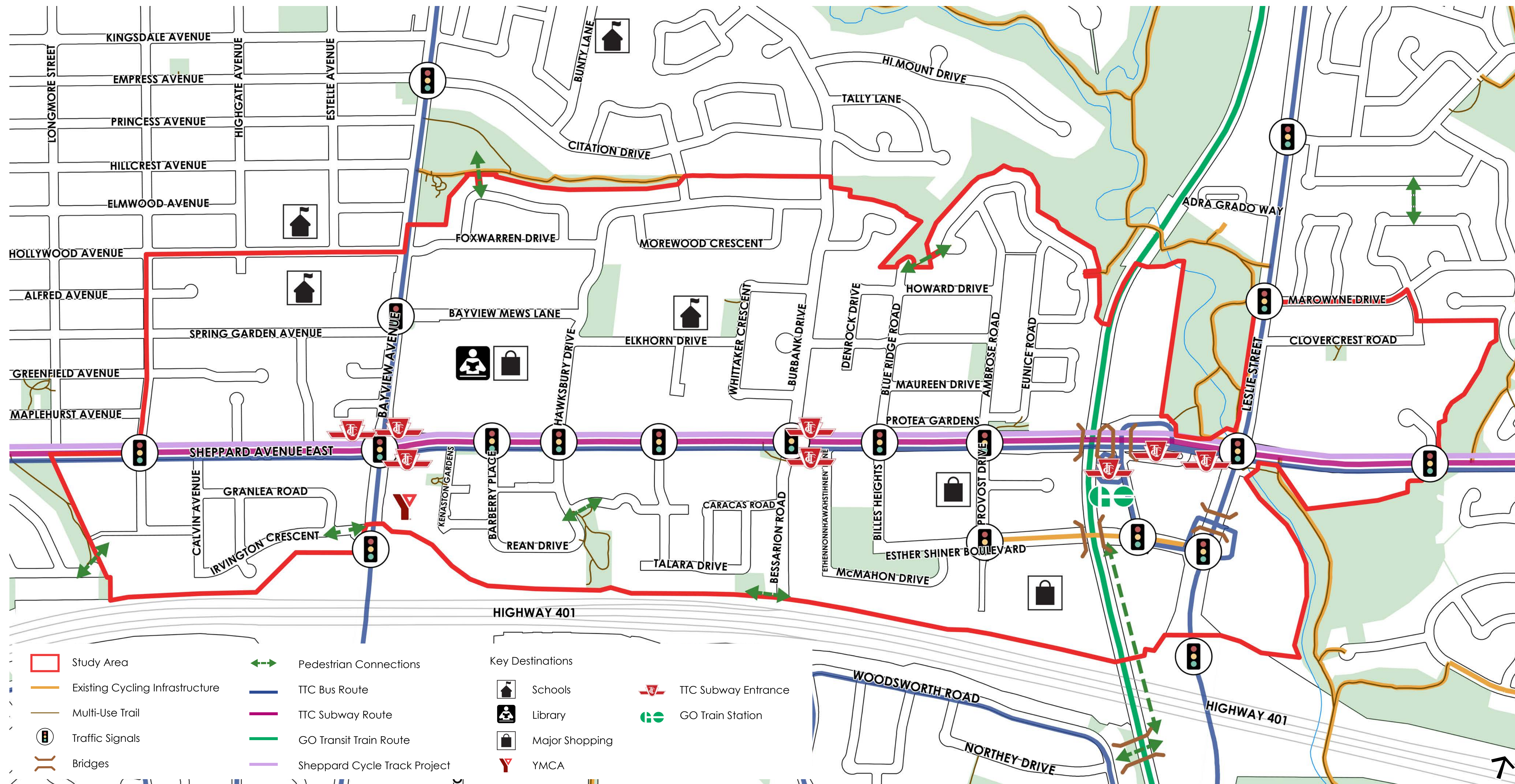
ReNew Sheppard East Planning Study

City Planning is developing a vision and plan to guide growth and future development between Bayview Avenue and Leslie Street.



For further information:
toronto.ca/ReNewSheppardEastStudy

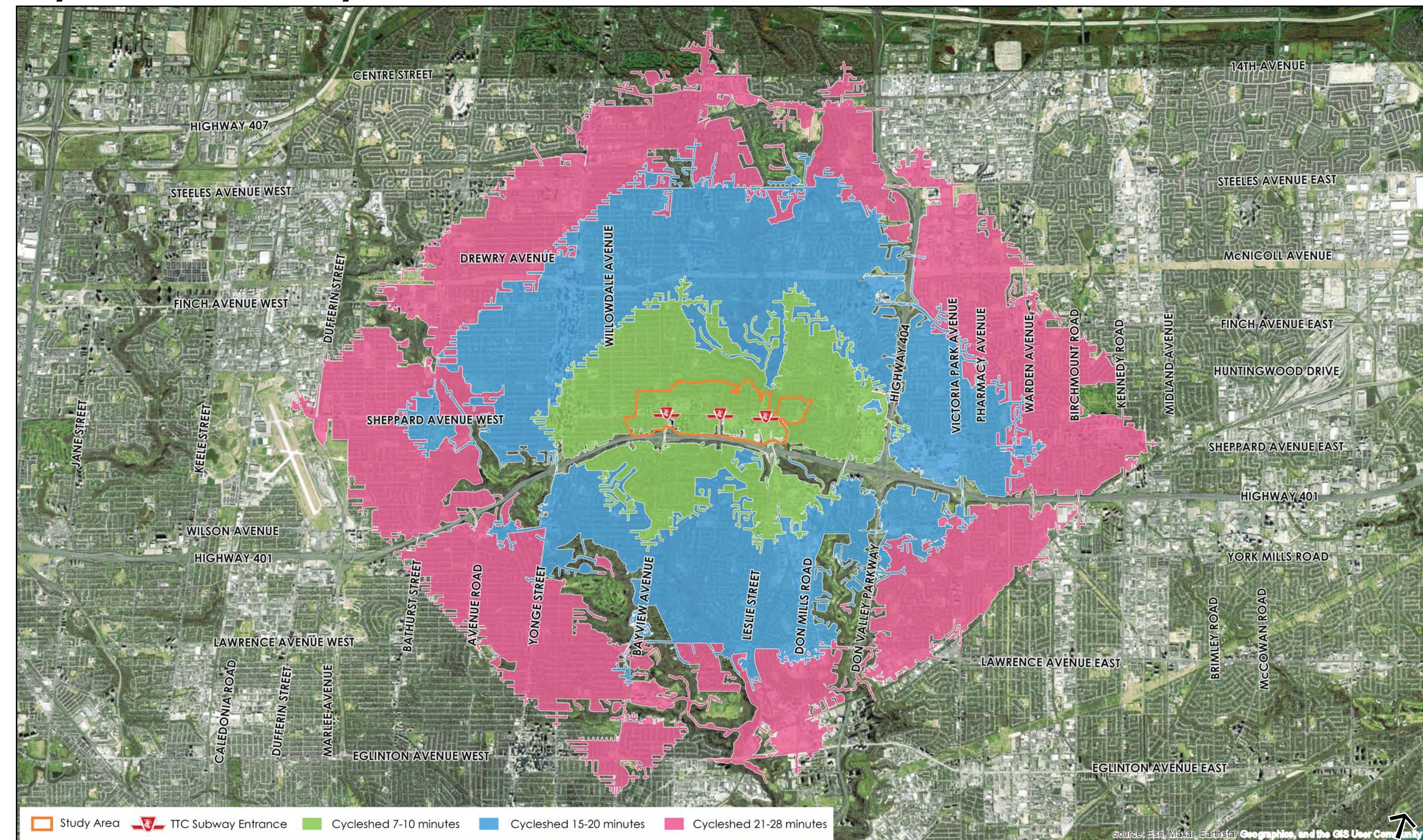
Mobility Existing Conditions



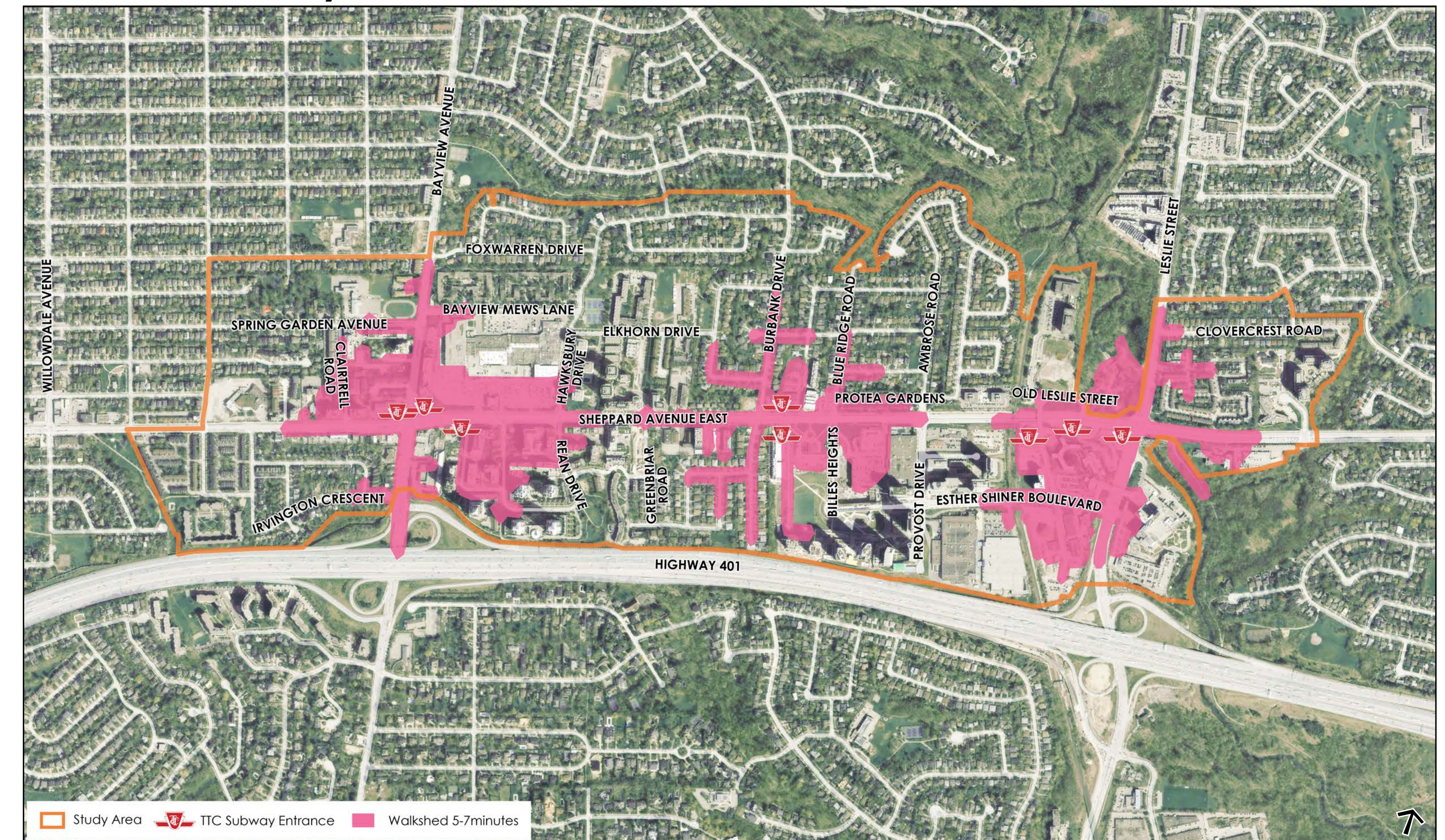
Transportation Context



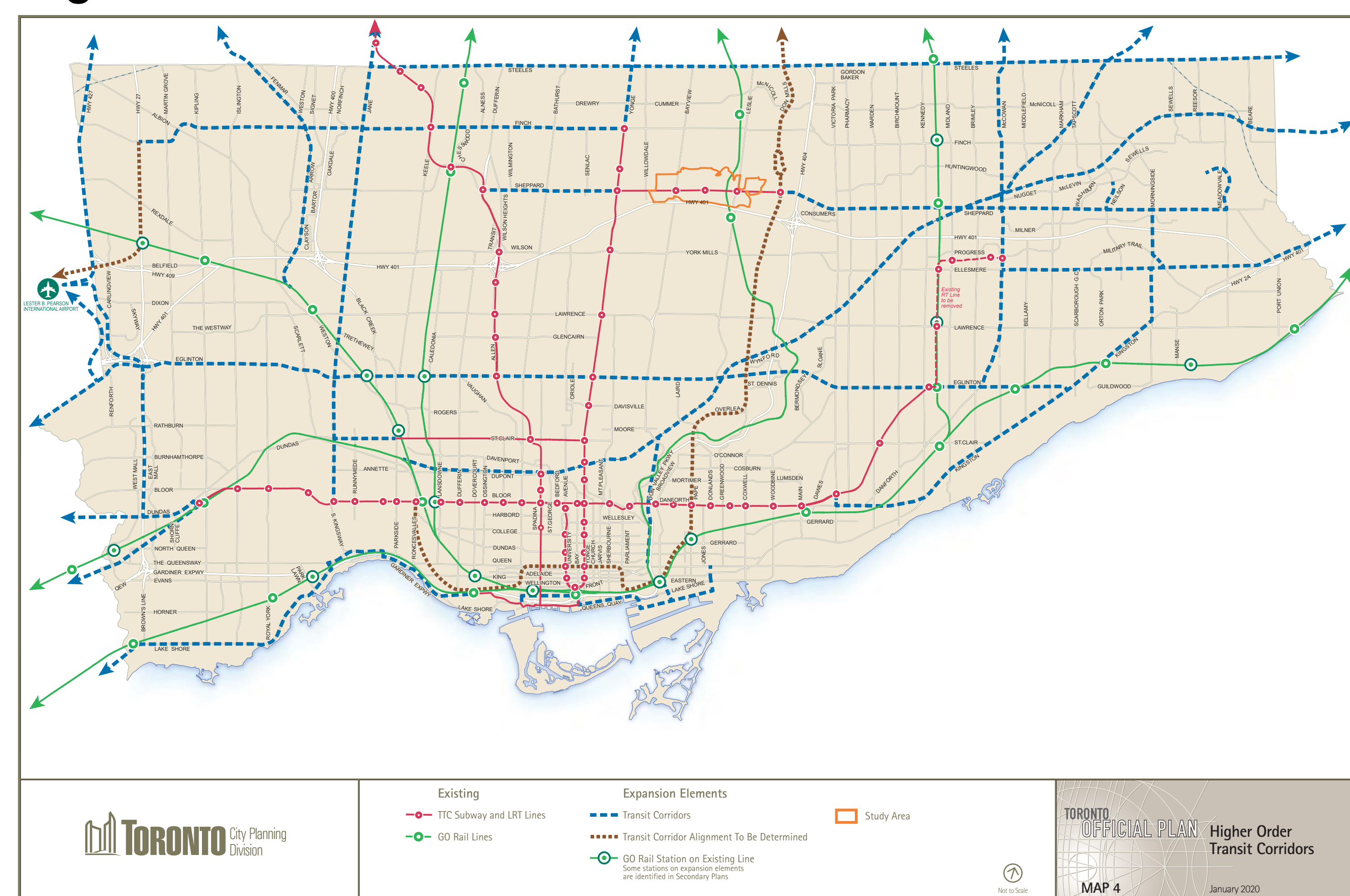
Cyclshed Analysis



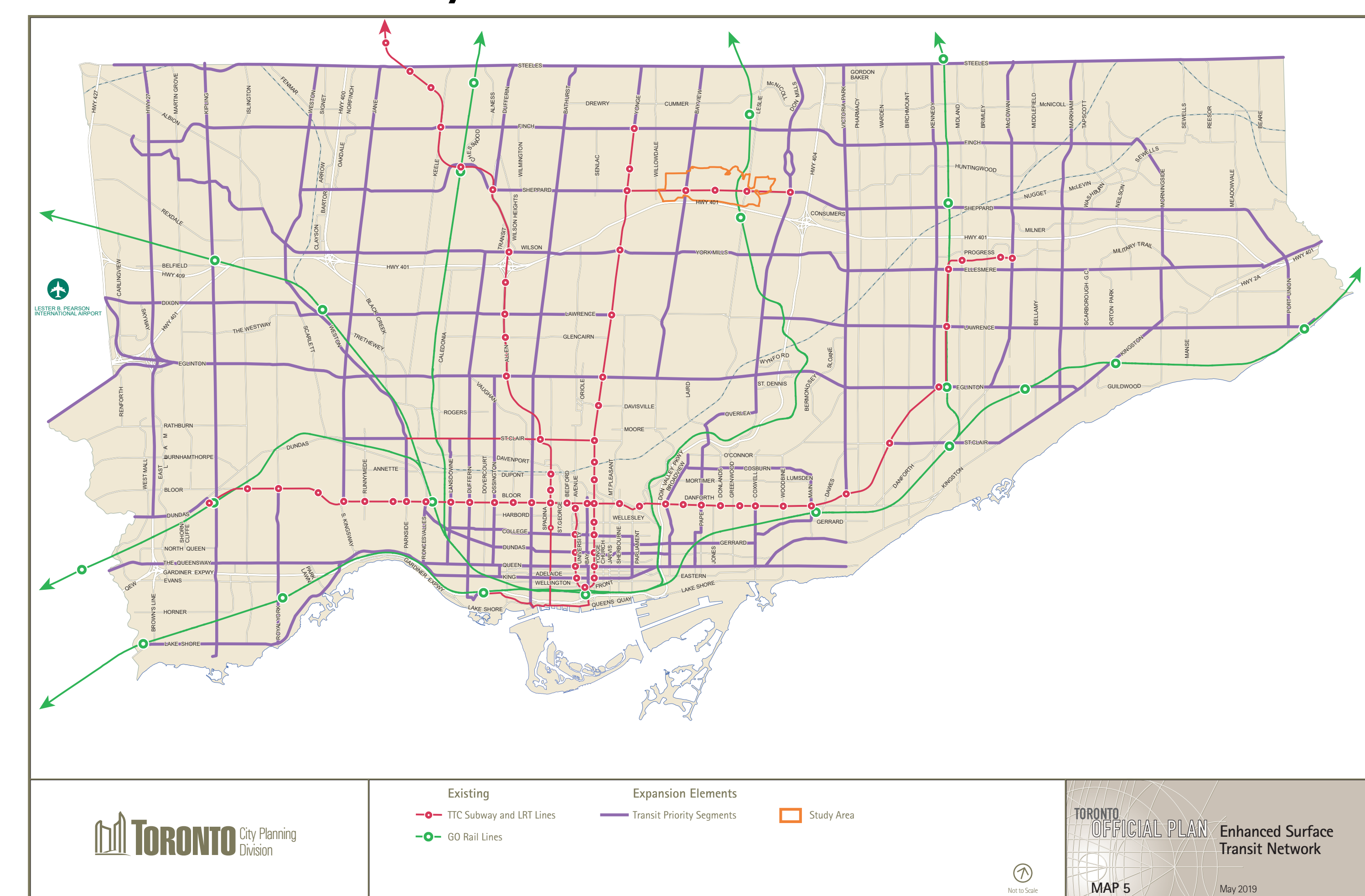
Walkshed Analysis



Higher Order Transit Corridors



Surface Transit Priority Network



Mobility Opportunities



*Post your
comments*

Issues and Opportunities

How can we improve the transportation network for pedestrians, cyclists, and transit riders? What issues and opportunities do you see?

Instructions

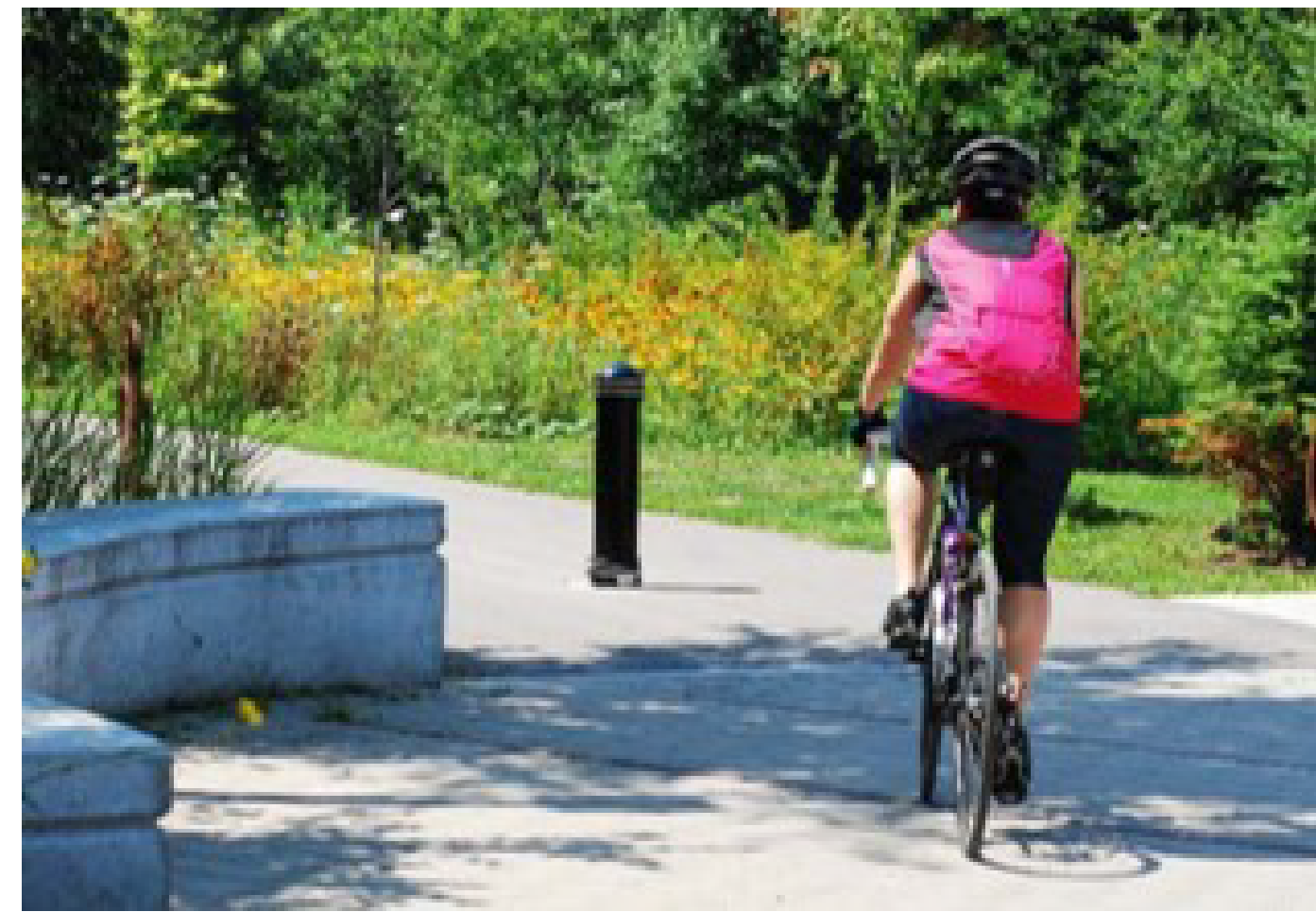
1. Place stickers on the map to indicate issues in **RED** and Opportunities in **GREEN**.
2. Add sticky notes to provide comments or additional detail.

Mobility Opportunities



Improve Connectivity & Accessibility

Support and improve local connectivity and bridge gaps in potential desire lines and local destinations. Ensure local pedestrian and cycling connections support accessibility needs of all users.



Integrate Local & Regional Transit

Explore opportunities to create barrier-free connectivity and integration between GO and TTC transit services at Leslie Station and GO Station.



Enhance Public Realm

Explore opportunities to secure public realm improvements including: reduced lane widths, increased boulevard widths with enhanced sidewalks, introduce sidewalks where none exist, and introduce a local cycling network.



Explore Travel Demand Management Strategies

Examine potential to make start and end trips through non-auto modes and explore alignment opportunities to enhance the Bike Share Toronto expansion and 4-year growth plan.



Provide Safe Mobility Options

Develop a multi-modal network that supports a variety of mobility options including options such as cycling, walking, and transit.



Create & Enhance Trail Connections

Seek opportunities to enhance existing trail connections and develop new trail accesses that provide more direct and accessible active connections.

