

Eglinton Park Indigenous & Gardening Advisory Group

Master Plan Implementation: Phase 1

Meeting #1

January 10, 2022



Land Acknowledgement

We acknowledge the land we are meeting on is the traditional territory of many nations including the Mississaugas of the Credit, the Anishnabeg, the Chippewa, the Haudenosaunee and the Wendat peoples and is now home to many diverse First Nations, Inuit and Métis peoples. We also acknowledge that Toronto is covered by Treaty 13 with the Mississaugas of the Credit.



African Ancestral Acknowledgement

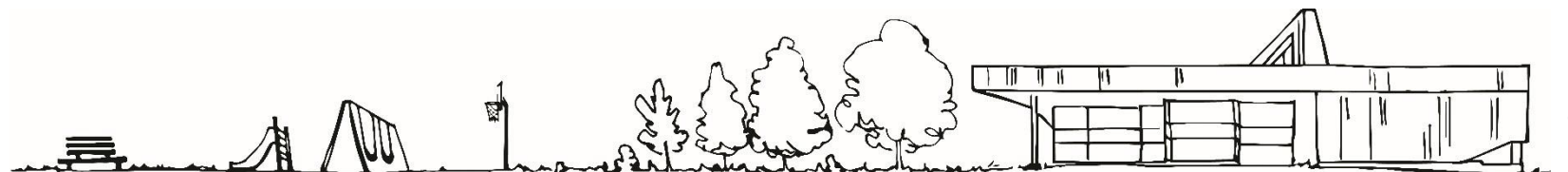
The City of Toronto acknowledges all Treaty peoples – including those who came here as settlers – as migrants either in this generation or in generations past – and those of us who came here involuntarily, particularly those brought to these lands as a result of the Trans-Atlantic Slave Trade and Slavery. We pay tribute to those ancestors of African origin and descent.



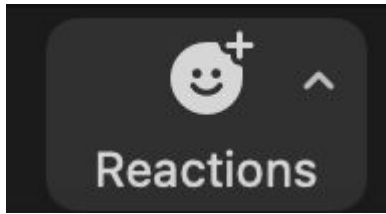
Closed Captioning

Automatic Closed Captioning is available.

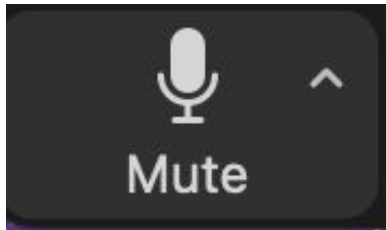
At the bottom of your screen, click the Show Captions icon to turn on captions.



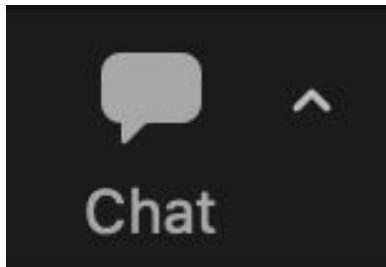
How To Participate



1. To prevent members from talking over each other in this virtual space, please click the Raise-Hand icon to indicate that you would like to speak. You can find the “raise hand” function in



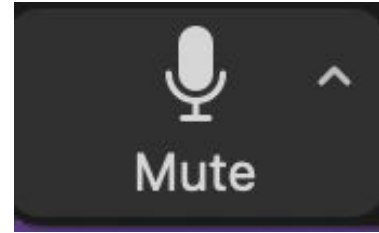
2. Once called on, please click the mute/unmute button to speak. If you are **only** connected by phone, dial *6 to unmute.



1. Alternatively, you can participate by typing into the chat. Click the chat icon to open the chat box and send your message to “Everyone”.

Audio Trouble?

At the bottom of the screen, click the arrow next to the microphone icon. Select “Switch to Phone Audio” and dial in at the number provided.



Thank you for being here!



Meeting Agenda



Welcome and introductions



Project overview



Discussion



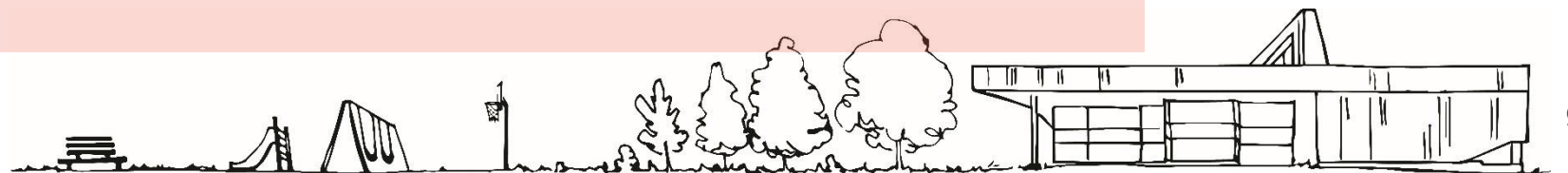
Next Steps



Adjourn

Project Team

City of Toronto Parks, Forestry and Recreation	Cristian Lukaszuk – Senior Project Manager, Capital Projects Tonya Crawford – Senior Project Coordinator, Capital Projects Daniel Fusca – Consultation Manager, Capital Projects Eli Bawuah – Senior Consultation Coordinator, Capital Projects
PROCESS	Casey Hinton – Senior Strategist Stephanie Stanov – Strategist
PLANT	Lisa Rapoport – Resource Partner, Architect Eric Klaver – Managing Partner, Landscape Architect Margot Shafran – Project Manager, Landscape Architect
TROPIC	Terence Radford – Indigenous Design Advisor, Landscape Architect
THE RIDGE ROAD	Anton Birioukov-Brant – Director & Co-Founder Bill Montgomery – Indigenous Facilitator



Round of Introductions

We'd love to learn who you are and your connection to Eglinton Park!

Project Context:

Eglinton Park Master Plan

Master Planning Process Overview

Fall 2017

City & Councillor Consultation

- Project Set-up & Review
- Objectives confirmed

Winter 2018

Public Consultation

- Interactive community workshop

Fall 2018 - Spring 2019

Preferred Concept & Consultation

- Preferred concept presented to City and stakeholders

Fall 2017

Stakeholder Consultation

- Confirm community goals & objectives

Spring 2018

Concept Options & Consultation

- Three concepts presented to City, stakeholders & public at an open house

Summer 2019

Final Concept & Consultation

- Master Plan presented to the public

The Master Plan

The City completed the Eglinton Park Master Plan in 2019, which sets a long-term vision for the park. The Master Plan will be used as a guide for a phased approach of park improvements subject to stakeholder and public consultation and available funds.

The Master Plan was a participatory effort and resulted in a plan focused on the park landscape and environment (it does not include the playground, buildings, community centre, arena or parking lot).

The Master Plan does not include the displacement of the Indigenous garden.



The Master Plan

The site plan was designed in reference to the creek that used to run through the site, but has since been buried.

The topography is marked by the historic Mud Creek, a tributary of the Don River, which carved the site and created the landforms that exist today. Mud Creek connects with the Don River at this historic Don Valley Brickworks, a prolific factory that manufactured durable high-quality bricks from the claybed of Mud Creek.



The Master Plan

Throughout the Master Planning consultation, priority areas were identified, which included:

- #1 - Central Spine Walkway
- #2 - Eglinton Ave. Park streetscape
- #3 - Roselawn streetscape and playing fields
- #4 - Landscape infrastructure Improvements

Phase 1 of the master plan implementation includes Priority Area #1.



The Master Plan - 2022 Amendment

The Master Plan preferred option has been updated to reflect the location of the existing Indigenous gardens and note that the location of the skateboard spot are yet to be determined.

This will be updated on the project website by mid-January.

1. TREED FORECOURT
2. RAISED ROADBED / SHARED SPACE
3. SEPARATED PED / CYCLIST PATH INCLUDING INTERMITTENT ADULT EXERCISE EQUIPMENT
4. PAVED NATURE PATH INCLUDING INTERMITTENT ADULT EXERCISE EQUIPMENT
5. TENNIS COURT / ICE RINK (EXISTING)
6. FENCED OFF-LEASH DOG PARK
7. BASEBALL DIAMOND (FENCED)
8. FENCE (HIGH)
9. FENCE (LOW)
10. LAWN; 9 MINI SOCCER FIELDS DURING PERMITTED HOURS
11. CANOPY ON FIELD HOUSE
12. PERGOLA / SHADE STRUCTURE
13. WATER PLAY FEATURE
14. PLAYGROUND (EXISTING MODIFIED PAVING) INCLUDING NEW SANDBOX
15. SEASONAL BASKETBALL COURTS IN PARKING LOT
16. NORTH TORONTO MEMORIAL ARENA
17. NORTH TORONTO MEMORIAL COMMUNITY CENTRE
18. MEMORIAL GARDEN
19. NORTH TORONTO MEMORIAL COMMUNITY CENTRE
20. OUTDOOR POOL
21. PLAZA FORECOURT
22. **SKATEBOARD STOP LOCATION TO BE DETERMINED IN PHASE 1**
23. HISTORY THEMED GARDENS
24. GRASS BERM / NATURAL BLEACHER
25. FENCED BASKETBALL COURT TO MATCH POOL FENCE
26. WATER WALL FEATURE / ARTWORK
27. FIRE PIT
28. DOG FOUNTAIN
29. SEATING OVERLOOKING RINKS / COURTS
30. NEW PLANTING AND STEP CONNECTOR
31. WIDE STAIR ACCESS
32. ~~WIDE STAIR ACCESS~~ AIRWAY IN NEW LOCATION WITH NEW
33. RAISED PLANTER WITH EXISTING TREES
34. PARK SIGN
35. PATIO / CAFE SPILL OUT AREA
36. WIDENED PATH ENTRANCE
37. EXISTING FIELD HOUSE WITH NEW TOOL STORAGE
38. ACCESS TO CHLORINE TANKS
39. **EXISTING INDIGENOUS GARDENS**

 SEATING / BENCHES, PICNIC TABLES

1. TREED FORECOURT
2. RAISED ROADBED / SHARED SPACE
3. SEPARATED PED / CYCLIST PATH INCLUDING INTERMITTENT ADULT EXERCISE EQUIPMENT
4. PAVED NATURE PATH INCLUDING INTERMITTENT ADULT EXERCISE EQUIPMENT
5. TENNIS COURT / ICE RINK (EXISTING)
6. FENCED OFF-LEASH DOG PARK
7. BASEBALL DIAMOND (FENCED)
8. FENCE (HIGH)
9. FENCE (LOW)
10. LAWN; 9 MINI SOCCER FIELDS DURING PERMITTED HOURS
11. CANOPY ON FIELD HOUSE
12. PERGOLA / SHADE STRUCTURE
13. WATER PLAY FEATURE
14. PLAYGROUND (EXISTING MODIFIED PAVING) INCLUDING NEW SANDBOX
15. SEASONAL BASKETBALL COURTS IN PARKING LOT
16. NORTH TORONTO MEMORIAL ARENA
17. NORTH TORONTO MEMORIAL COMMUNITY CENTRE
18. MEMORIAL GARDEN
19. NORTH TORONTO MEMORIAL COMMUNITY CENTRE
20. OUTDOOR POOL
21. PLAZA FORECOURT
22. **SKATEBOARD STOP LOCATION TO BE DETERMINED IN PHASE 1**
23. HISTORY THEMED GARDENS
24. GRASS BERM / NATURAL BLEACHER
25. FENCED BASKETBALL COURT TO MATCH POOL FENCE
26. WATER WALL FEATURE / ARTWORK
27. FIRE PIT
28. DOG FOUNTAIN
29. SEATING OVERLOOKING RINKS / COURTS
30. NEW PLANTING AND STEP CONNECTOR
31. WIDE STAIR ACCESS
32. ~~WIDE STAIR ACCESS~~ AIRWAY IN NEW LOCATION WITH NEW
33. RAISED PLANTER WITH EXISTING TREES
34. PARK SIGN
35. PATIO / CAFE SPILL OUT AREA
36. WIDENED PATH ENTRANCE
37. EXISTING FIELD HOUSE WITH NEW TOOL STORAGE
38. ACCESS TO CHLORINE TANKS
39. EXISTING INDIGENOUS GARDENS

 SEATING / BENCHES, PICNIC TABLES



2022 - Amendment

EGLINTON PARK MASTER PLAN PREFERRED OPTION

JUNE 24, 2019 PLANT

Project Overview:

Eglinton Park Master Plan

Phase 1: Master Plan Implementation

The Master Plan: Phase 1

The City is now implementing the Master Plan, in a phased approach, based on the priorities and available budget.

Phase 1 of the Master Plan implementation is based on Priority Area 1 and available funds. Phase 1 includes the following;

- Improvements to the central spine walkway, east path and west stair
- The addition of a dog off-leash area
- The addition of a skate spot
- Indigenous placekeeping and gardening
- Passive gathering spaces



Phase 1: Inspiration



Phase 1: Project Update

Improvements to existing limestone path at the east side of the park between Roselawn Ave. and the existing concrete east path near the wading pool was completed in the fall of 2022. The path was elevated to improve site drainage and repaved with asphalt.



Phase 1: Project Timeline

Fall 2021 – Spring 2022

Phase 1 Begins

- Request for landscape architect consultant released
- Consultant hired to assist in the development of the MP

Fall 2022

Informal Public Engagement

- Park pop-ups and online interactive mapping activity

Winter 2023

Concept Options & Consultation

- Advisory group meeting
- Indigenous engagement
- Online public engagement

Fall 2022

East Path Construction

- East path repaved with asphalt

Fall 2022

Advisory Group Consultation

- Re-establish the Community Advisory Group
- Indigenous Outreach & Engagement

Spring 2023

Preferred Option & Consultation

- Advisory group meeting
- Indigenous engagement
- Public engagement via Open House

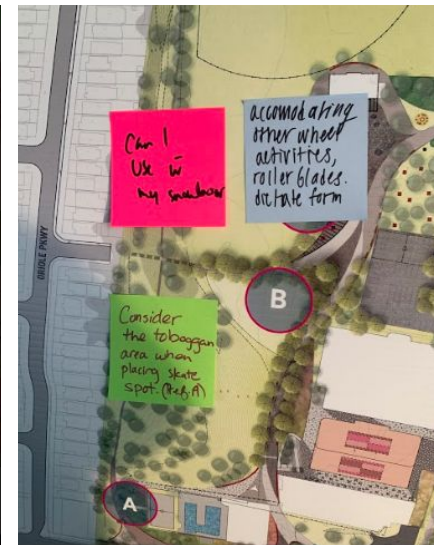
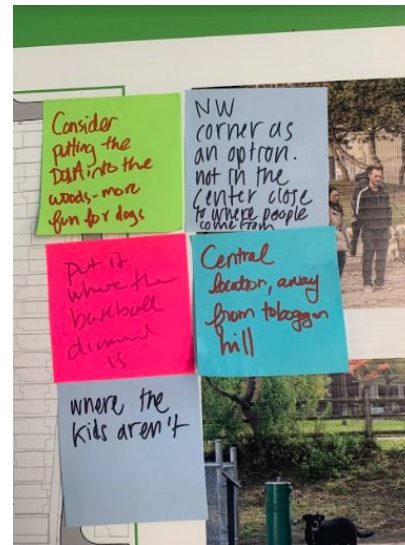
Phase 1: Public Engagement

Park Pop-Up (October 2 & 3)

This informal public engagement served to inform local community members about the Master Plan Implementation and invited feedback for elements included in Phase 1

Participants were asked about the proposed locations of the dog off-leash area (OLA) and proposed locations for the skate spot. Additional comments about park improvements were welcomed.

Over 80 park users shared their thoughts and feedback.

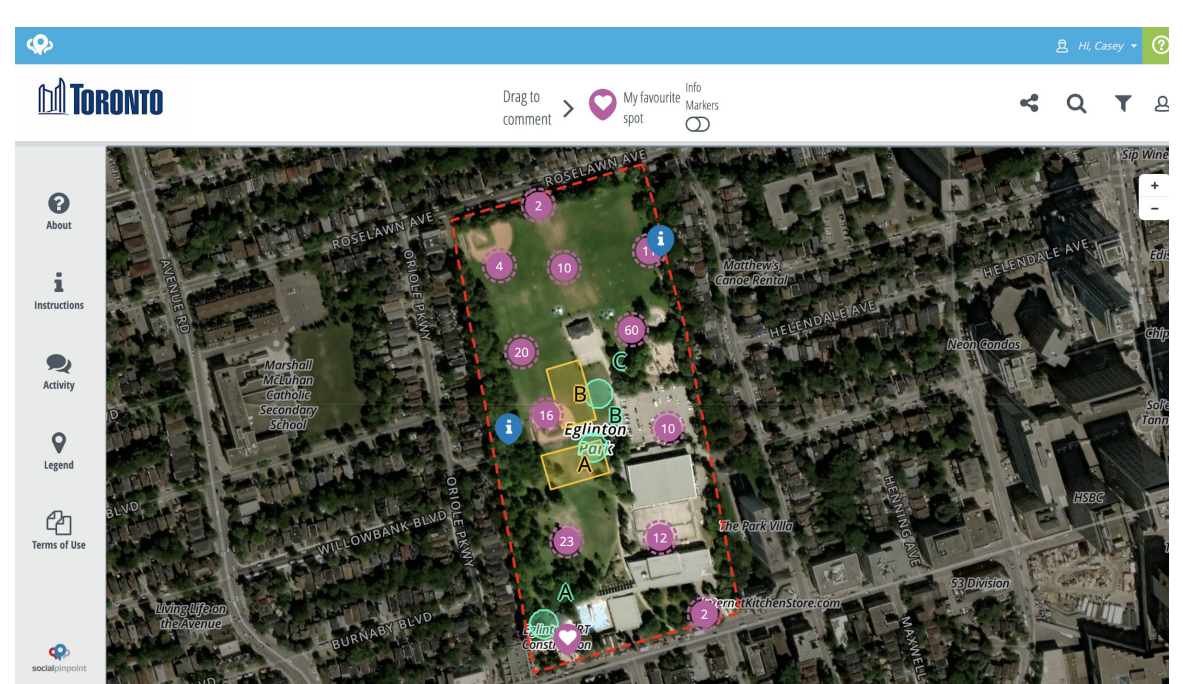


Phase 1: Public Engagement

Interactive Mapping Activity (*Social Pinpoint*)

The online interactive mapping activity invited participants to learn more about the Master Plan implementation and provide an opportunity to rate and rank proposed locations for the OLA and skate spot

1097 survey responses through the Interactive Mapping Activity brought forward a diversity of perspectives.



Phase 1: Dog off-leash area

Phase 1 includes the addition of a dog off-leash area (OLA). There are two options for the Dog Off-Leash Area location, indicated on the map. The proposed size is around 2000m².



What We Heard

Pop-ups, Social Mapping & Community Advisory Group

OLAs

Generally participants were in favour of having an OLA and **preferred Location A**. The Community Advisory Group shared concerns about Location B, with some reinforcing the value of the open park space for soccer.

Participants requested:

- Include seating
- Shade and greenery
- Softscape and planting
- Water fountain
- Fences
- Lighting
- Poop bag and disposal station



Phase 1: Skate Spot

Phase 1 includes the introduction of a skate spot. There are three options for the skate spot location, indicated on the map. The proposed size would be a maximum of 600m².



What We Heard

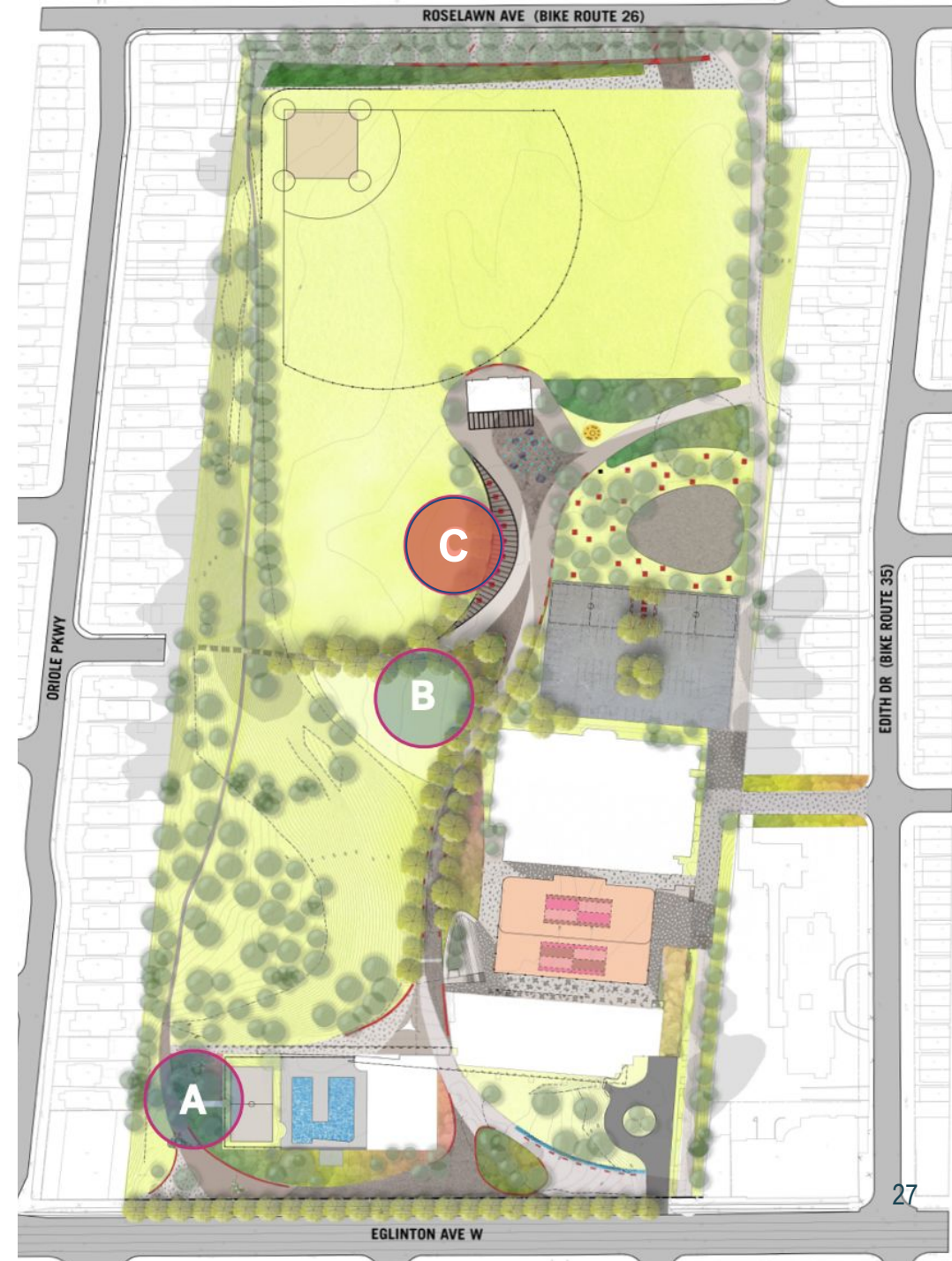
Pop-ups, Social Mapping & Community Advisory Group

Skate Spot

Most community members showed nearly equal interest in all three locations, though **option C was preferred**. Many Community Advisory Group members were concerned that location B and C would encroach on the open green spaces. Members from the skateboarding community didn't like the tucked away nature of location A.

Participants considerations:

- Drainage
- Central location for supervision
- Lighting
- Accessible from existing paths



What We Heard at the Pop-ups and from Social Mapping

General Comments

Baseball Diamond

Generally residents were not concerned with the removal on one baseball diamond and pleased with improvements for the primary baseball diamond.

Safety

Participants expressed the need to increase park safety, especially at night, and a request for improved park maintenance.

Soccer Fields

Some participants indicated they would prefer only on designated soccer field area and improved scheduling in order to control overcrowding, park and safety.

Phase 1: Indigenous Garden

The implementation of the Master Plan does not include the displacement of the Indigenous garden.

Phase 1 includes new opportunities for Indigenous placekeeping, and gardening/landscaping.



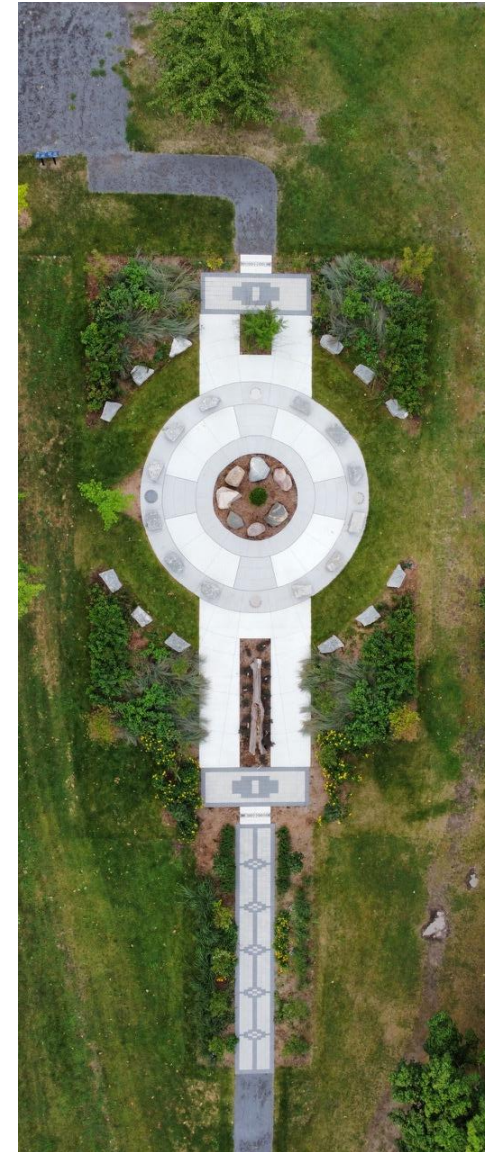
Inspiration: Alderville First Nation Commemorative Artwork (Kingston)

by Trophic Design



Inspiration: Alderville First Nation Commemorative Artwork (Kingston)

by Trophic Design



Inspiration: Alderville First Nation Commemorative Artwork (Kingston)

by Tropic Design



Questions & Discussion

Question 1

How will the introduction of a dog off-leash area change the communities experience at the park? Which location works best?

Phase 1 includes the addition of a dog off-leash area (OLA). There are two proposed locations for the Dog Off-Leash Area, indicated on the map. The proposed size is around 2000m².



Question 2

How will the introduction of a skate spot change the communities experience at the park? Which location works best?

Phase 1 includes the introduction of a skate spot. There are three proposed locations for the skate spot, indicated on the map. The proposed size would be a maximum of 600m² and includes 1-3 skate features.

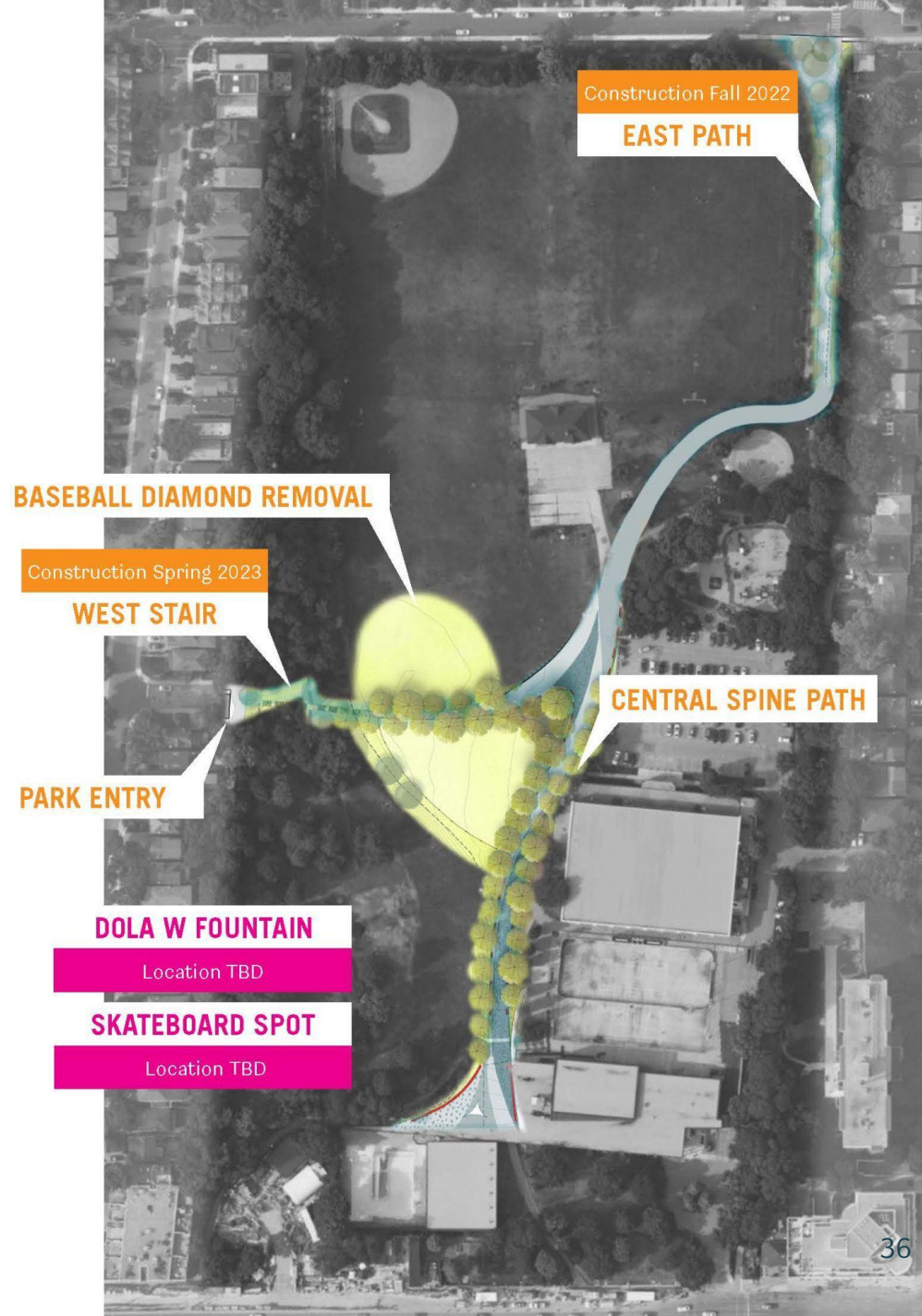


Question 3

What features, amenities or improvements reflected in Phase 1 of the Master Plan Implementation are most important to you, and why?

Phase 1 of the Master Plan implementation will include general park upgrades and improvements only, including:

- Improvements to the central spine walkway, east path and west stair
- The addition of a dog off-leash area
- The addition of a skate spot
- Indigenous placekeeping and gardens
- Passive gathering spaces

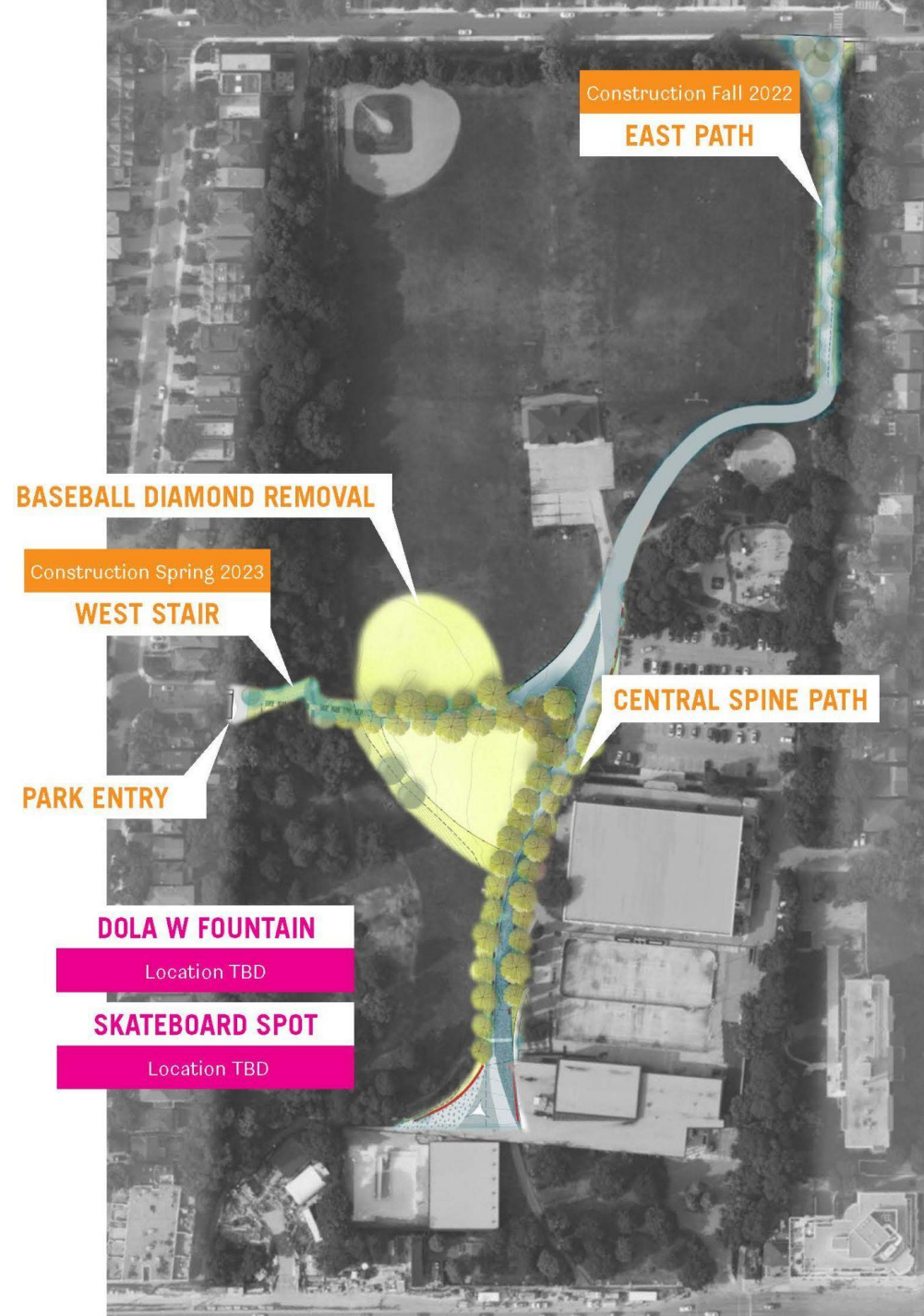


Question 4

How might Indigenous knowledge and planting strategies inform landscaping decisions throughout the park, and support Indigenous placekeeping?

For discussion:

- Opportunity to learn more about the existing garden
- Ideas for Indigenous placekeeping
- Indigenous planting strategies, techniques and species
- Knowledge sharing Indigenous workshop
- Future Indigenous Partners and Organizations to include



Next Steps

Next Steps

- You can send additional ideas, comments, or suggestions to Elijah.Bawuah@Toronto.ca
- The Project Team will compile a written summary of the meeting and distribute it for your review.
- A second meeting or workshop will take place in February of 2023.
 - You will receive an invitation via email with additional details.

Thank you!