

Welcome

ReNew Sheppard study is looking for feedback on how the City can shape future growth to achieve a long-term vision that benefits residents, businesses, and local institutional networks. How do we leverage public investments in the transportation network to create a community where people can live, work, and play?

In this room you'll find information on:

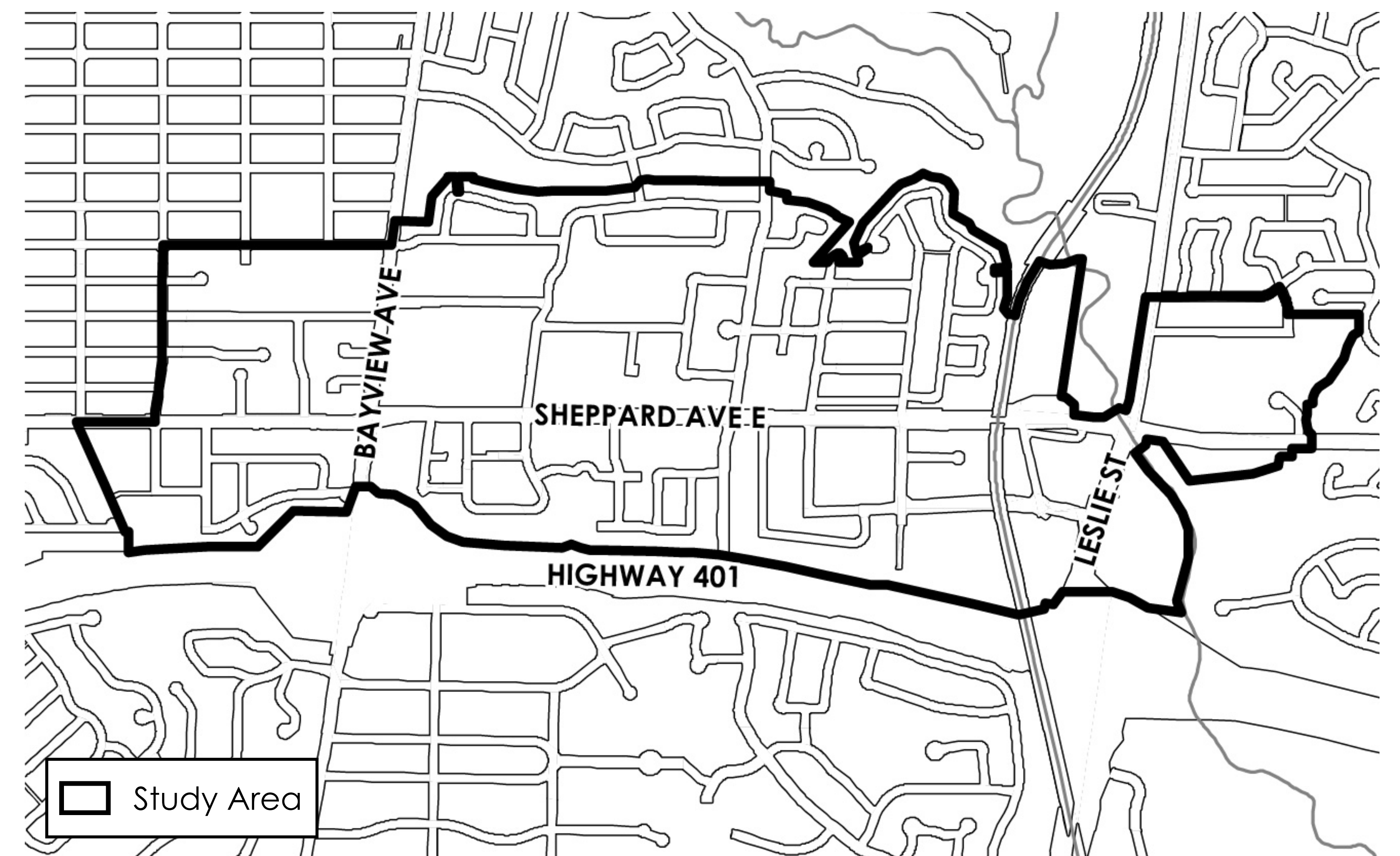
- Study Area
- Existing Conditions
- Opportunities

Talk to Us

A number of City staff are here to listen to your comments and answer questions.

Write Down Your Comments

- We are looking for YOUR input!
- Fill out a comment form
- Email the planner at:
Jenny.Choi@toronto.ca



Land Acknowledgment



“We acknowledge the land we are meeting on is the traditional territory of many nations including the Mississaugas of the Credit, the Anishnabeg, the Chippewa, the Haudenosaunee and the Wendat peoples and is now home to many diverse First Nations, Inuit and Métis peoples. We also acknowledge that Toronto is covered by Treaty 13 with Mississaugas of the Credit.”

ReNew Sheppard - Guiding Principles



Emerging Guiding Principles



COMPLETE COMMUNITY

- Land uses to support daily needs and employment opportunities



LIVABLE COMMUNITY

- An attractive and vibrant public realm with links to the Don River and East Don Parkland
- Expand, improve and connect to the park and open space network



CONNECTED COMMUNITY

- Improving connections to TTC and GO Transit stations and local destinations
- Activate transit stations and parks and open spaces to connect communities
- Complete and balanced human-scale mobility network
- Greater mobility choices



PROSPEROUS COMMUNITY

- Build up existing resources such as the North York General Hospital and other institutional uses
- Supporting the expansion of employment and service uses with connections to local and regional transit



SUSTAINABLE COMMUNITY

- Integrate green infrastructure and low impact development through a set of community, infrastructure, and management practices as per Toronto's Resilience Strategy

Tell us what you think!

ReNew Sheppard - Emerging Vision

Emerging Vision

The Renew Sheppard Avenue East Study will...

- Enhance the identity and sense of place to reinforce the existing community assets and local features to build a mixed-use, transit supportive community
- Transforms towards a complete community that includes broadening housing options and job choices as well as retail and access to services
- Leverage the hospital and institutional uses for enhanced employment, academic partnership, and research
- Provide a framework for an improved and expanded public realm. The parks and open space system will be the organizing element for the Study Area that enhances quality of life, ensures safety for all mobility users, supports climate adaptability, and provides access to the natural heritage system and other open spaces
- Expand active, sustainable mobility choices that optimize the local and regional transit network and connect residents and workers to important community destinations
- Buildings will be appropriately scaled to define the public realm, and provide access to sunlight and views of the sky as well as minimize impacts



Tell us what you think!

*What is your vision for
the community?*

What We Heard - March 2022



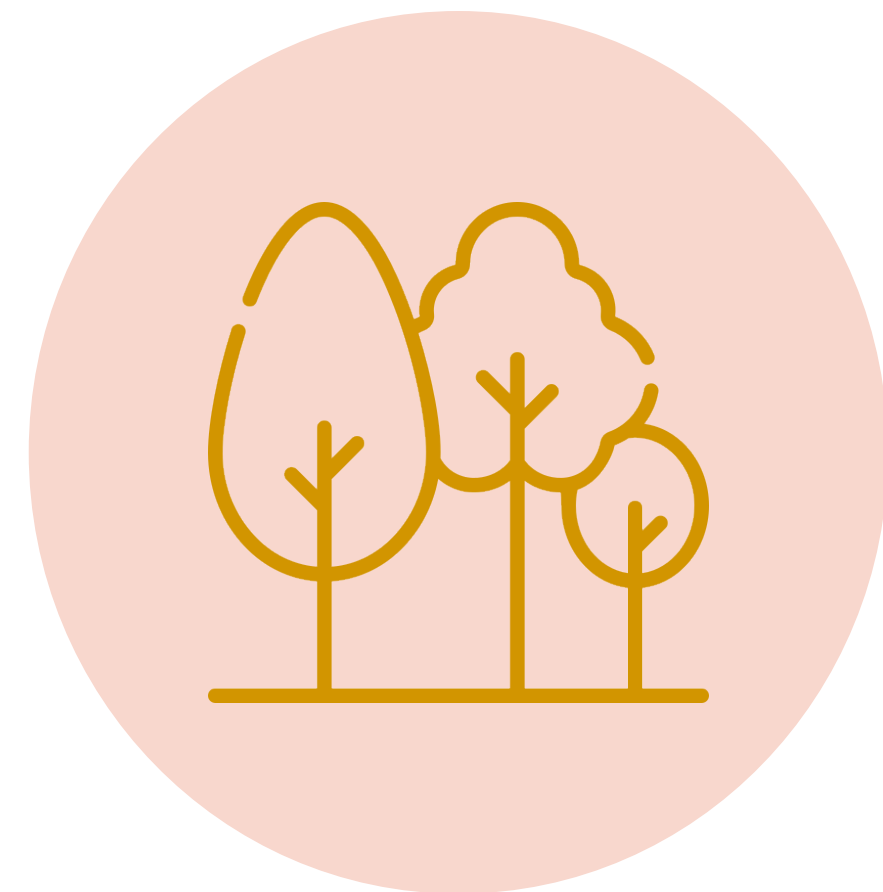
Built Form

Greater heights closest to Highway 401, and closer to subways, Canadian Tire and Bayview Village Mall.



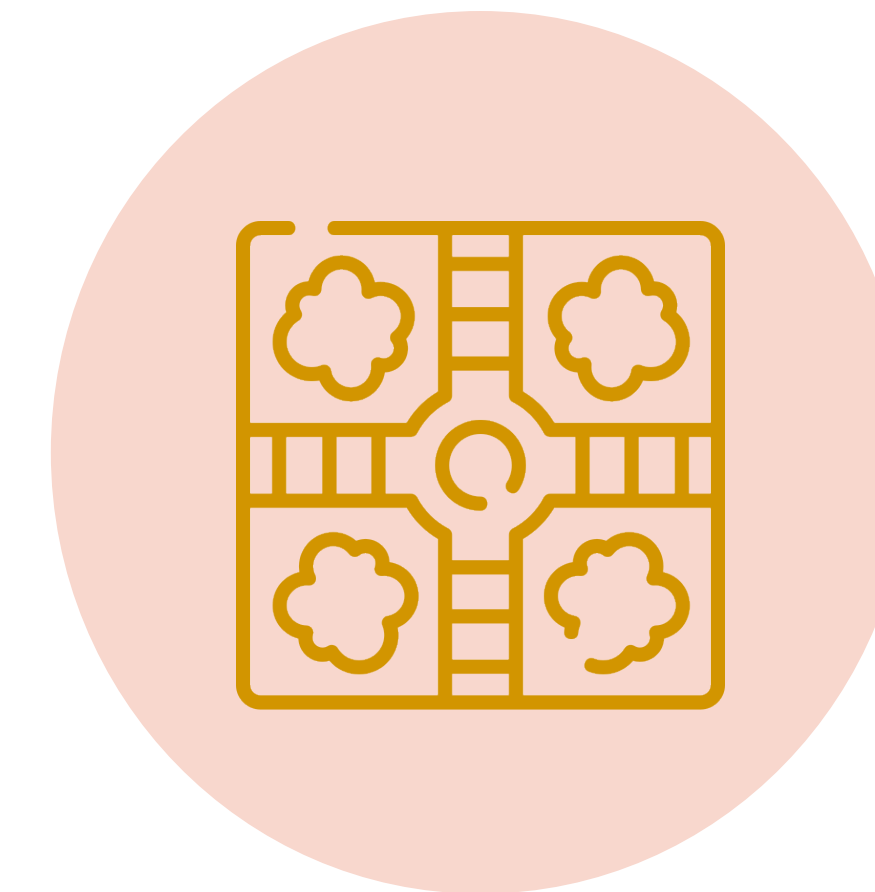
Connections

Development to connect to subways and GO trains



Climate and Sustainability

Planning infrastructure to protect for extreme weather changes in the future.



Public Realm

Create pedestrian friendly places and provide street amenities on Sheppard.



Parks

Lack of parks along Sheppard.



Office and retail

Need for office and commercial development.

What is the story of Sheppard East?



1954-05 East Don River in the vicinity of Bayview and Leslie and Sheppard and Finch



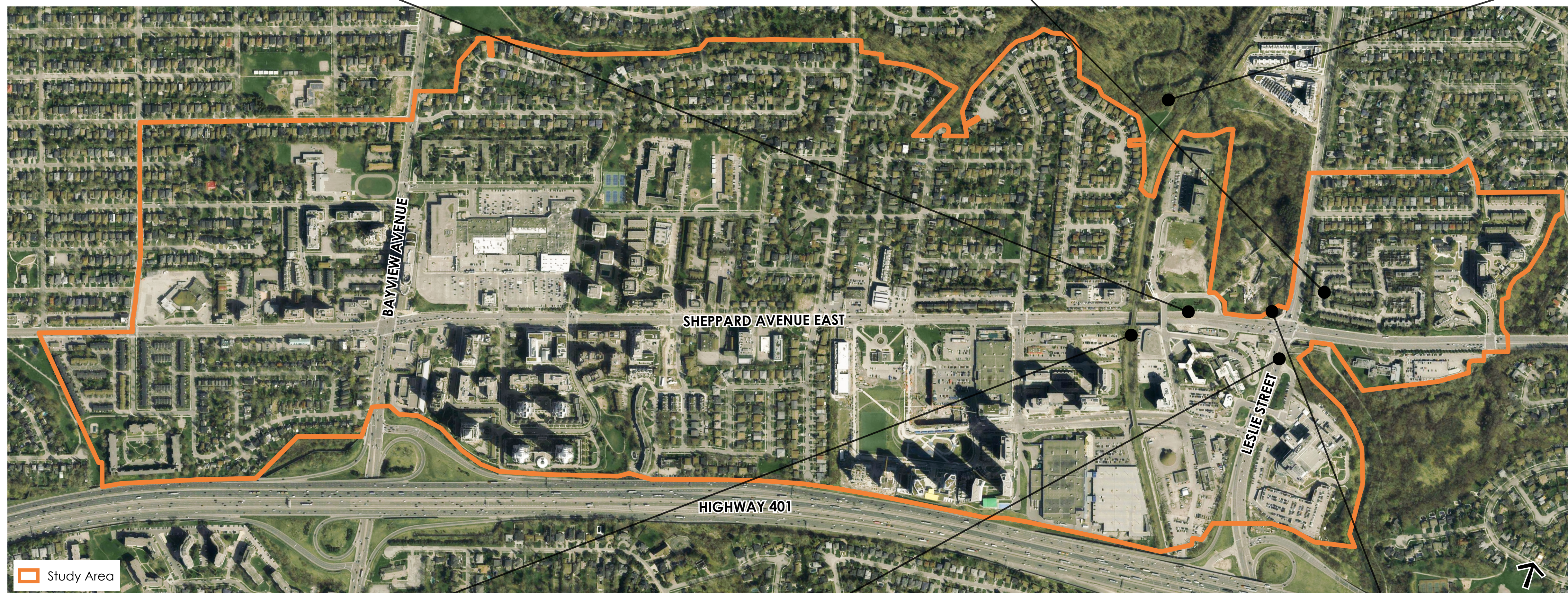
1974 "elegant Mediterranean façade" towns @ corner of Leslie St and Sheppard E



1954-05 East Don River in the vicinity of Bayview and Leslie and Sheppard and Finch



1964 GO-train at Sheppard East @ Brimley (Outside study area) (oriole GO opened in 1978)



What is your favourite place in the study area?
(put a **yellow** sticker on the map)

What do you think needs improvement?
(put a **blue** sticker on the map)

Tell us what you think by placing the sticker on the Aerial Map.

What makes it special for you?
What kind of improvement are you looking for?



1965 - CN rail crossing at Sheppard East

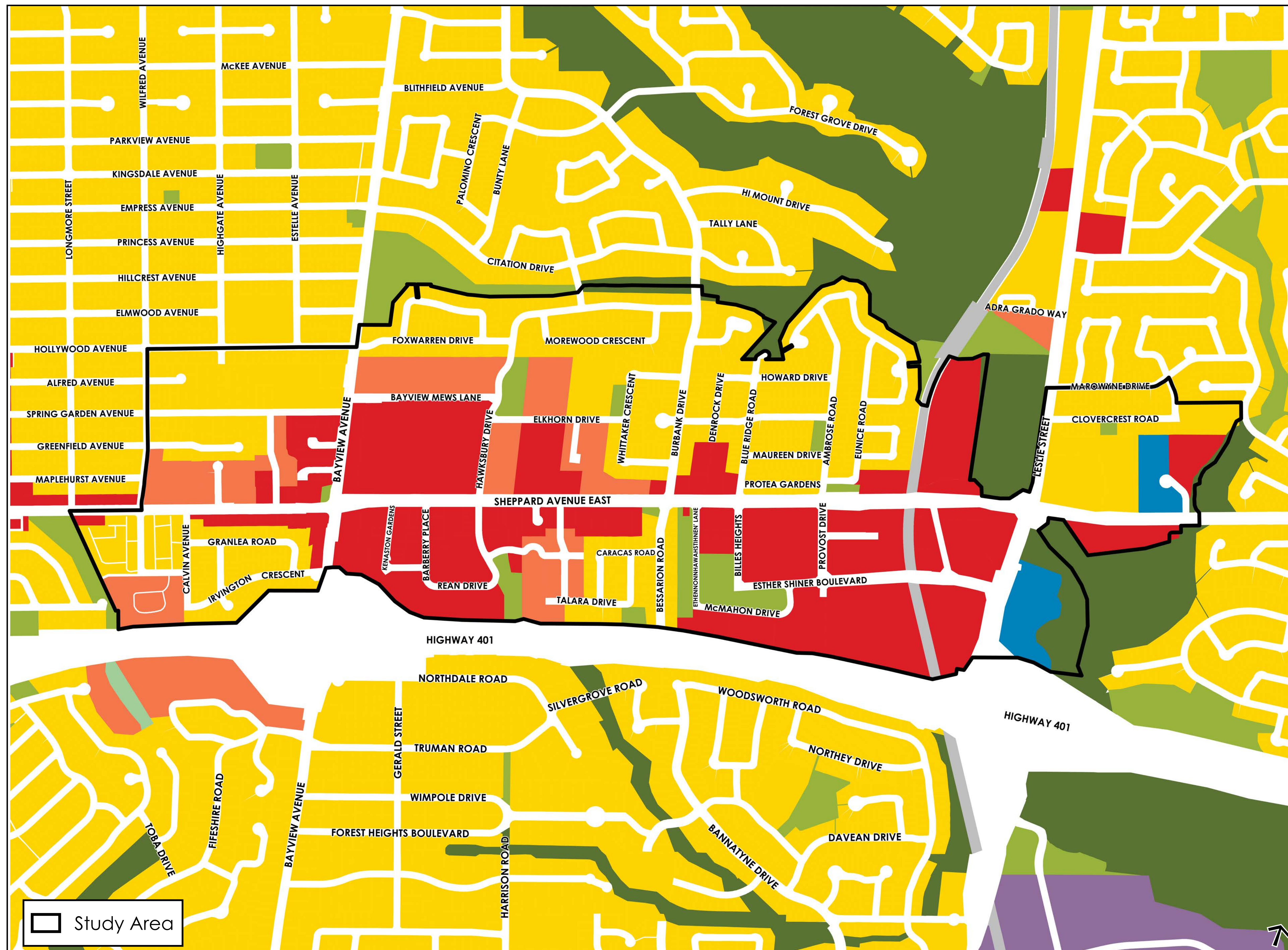


1961 Leslie St, looking north from Sheppard E



1964, John McBride Sr house, 1860s, west side of Leslie St, north of Sheppard E

Land Use



■ Mixed Use Areas

Provide a broad array of mix of commercial, residential and institutional uses so Torontonians can live, work and shop in the same area and depend less on their cars

■ Apartment Neighbourhoods

Apartment Neighbourhoods are distinguished from low-rise Neighbourhoods because a greater scale of buildings are permitted and different scale-related criteria are needed to guide development and contribute to a high quality urban environment

■ Neighbourhoods

Neighbourhoods consist of detached housings, demi-detached houses, duplexes, triplexes and various forms of townhouses as well as interspersed walk-up apartments with or without elevators that are four storeys or less

■ Parks

Parks and Open Space Areas are the parks and open spaces, valley, watercourses, ravines, portions of the waterfront, golf courses and cemeteries

■ Natural Areas

The areas shown as Natural Areas on Maps 13-23 will be maintained primarily in a natural state, while allowing for compatible creational, cultural and educational uses and minimize adverse impacts on natural features and functions.

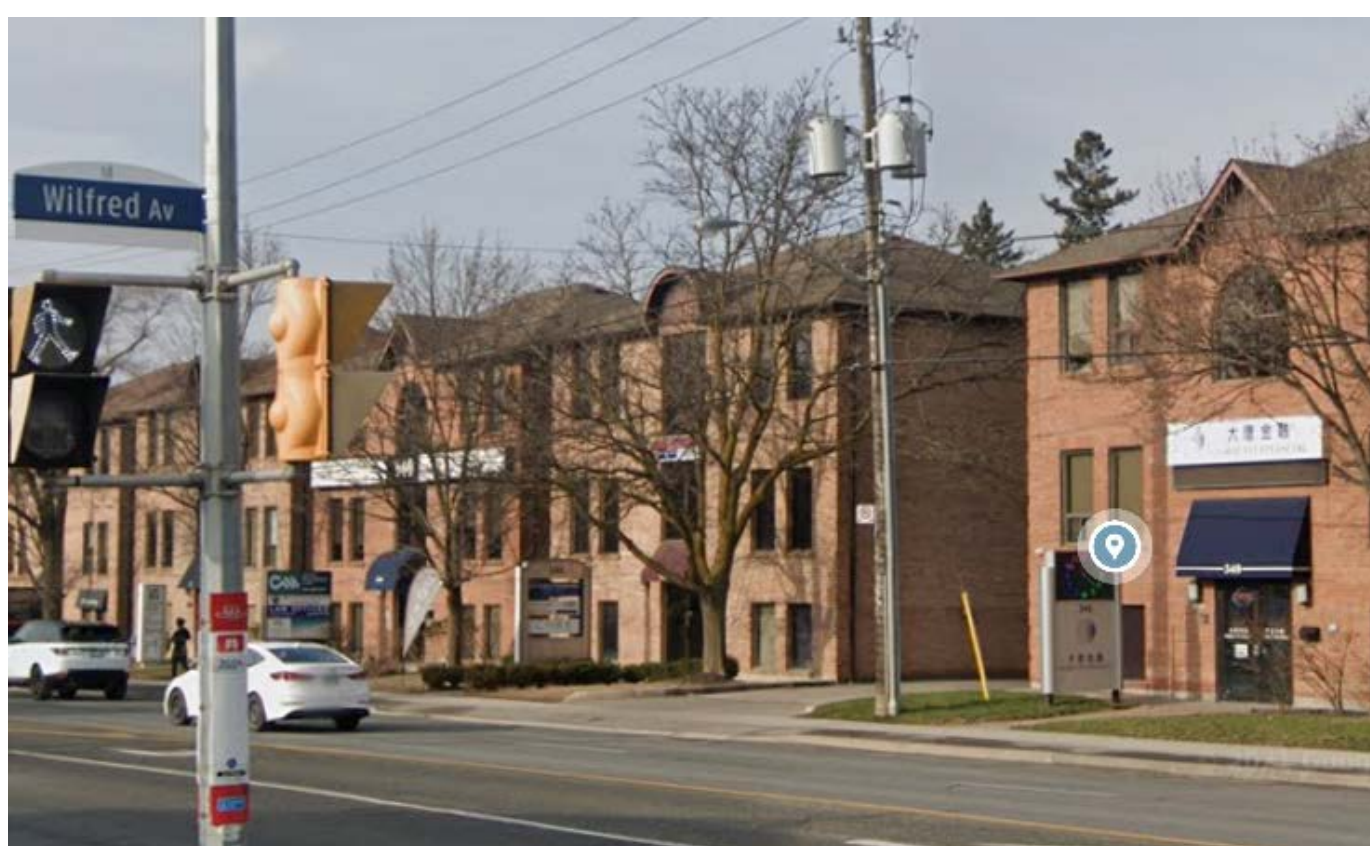
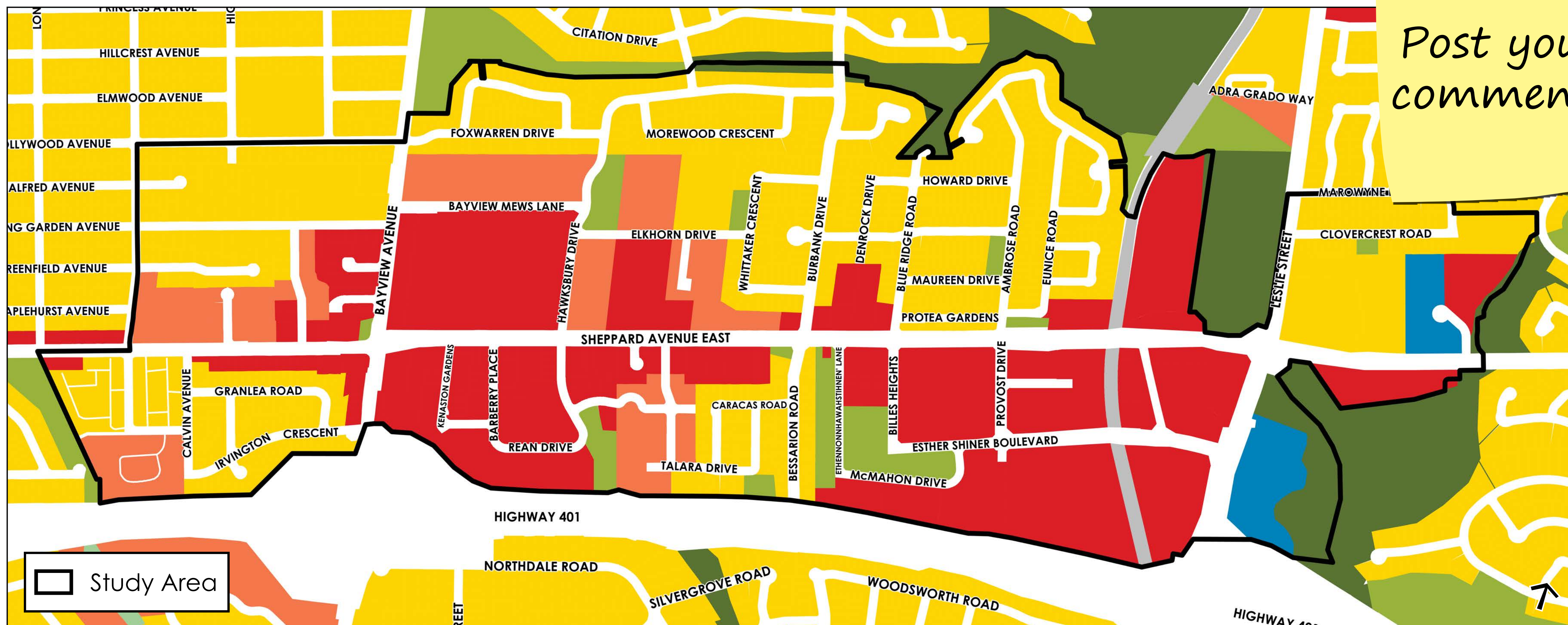
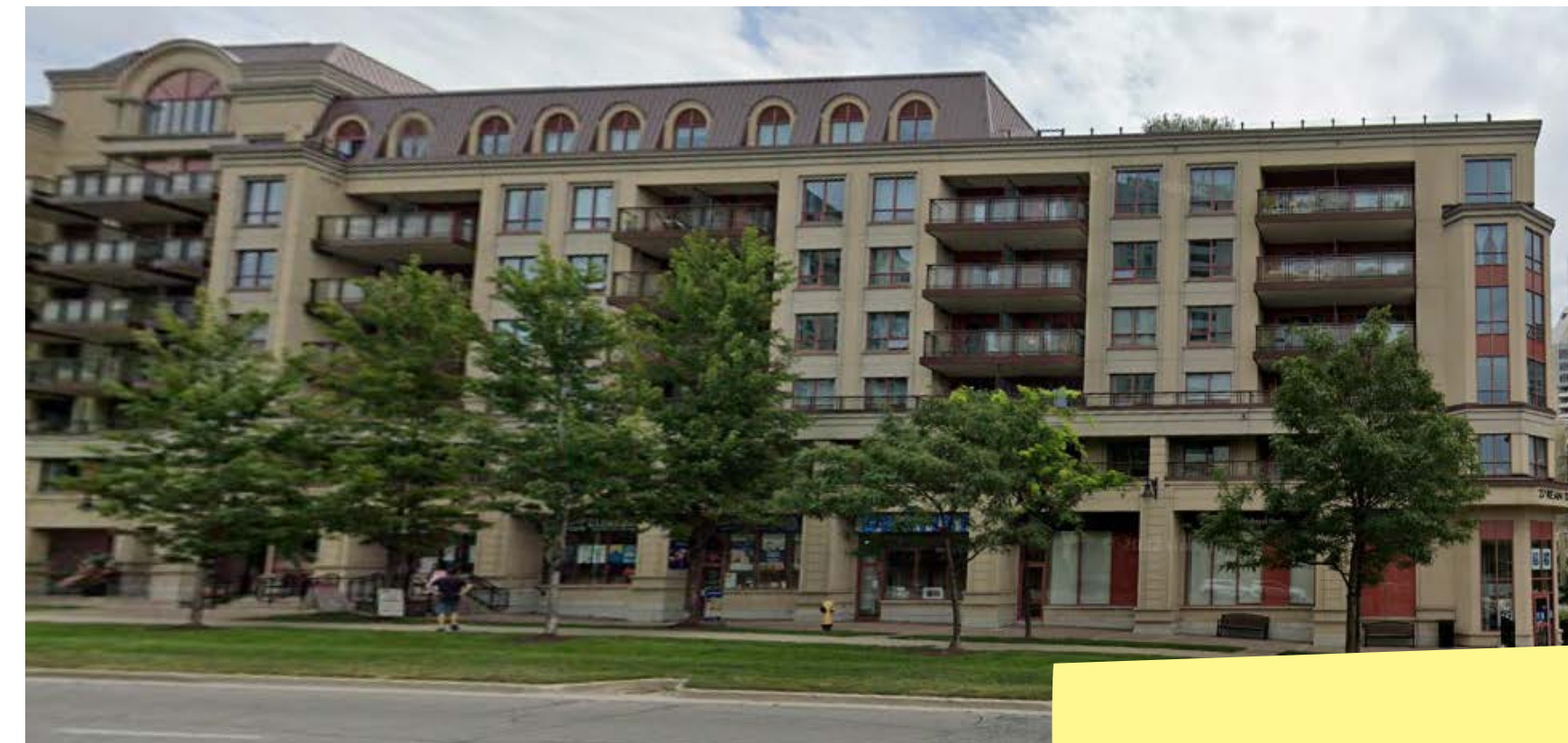
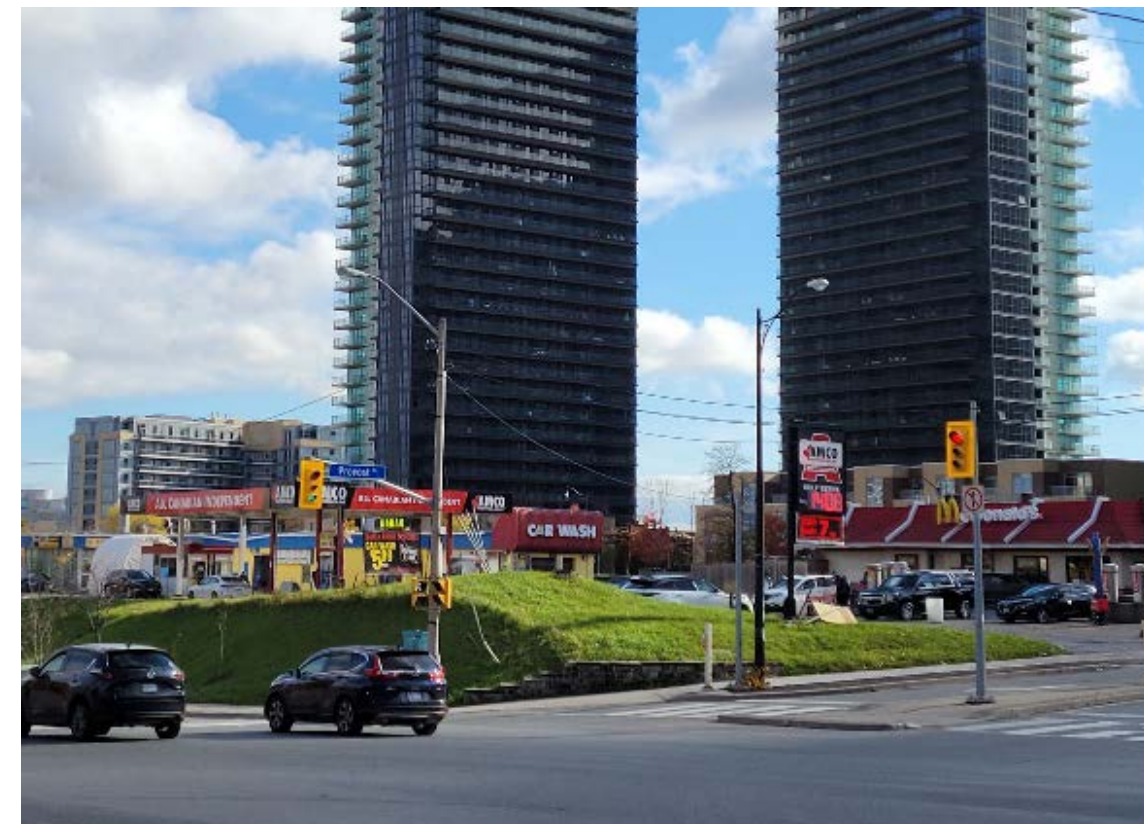
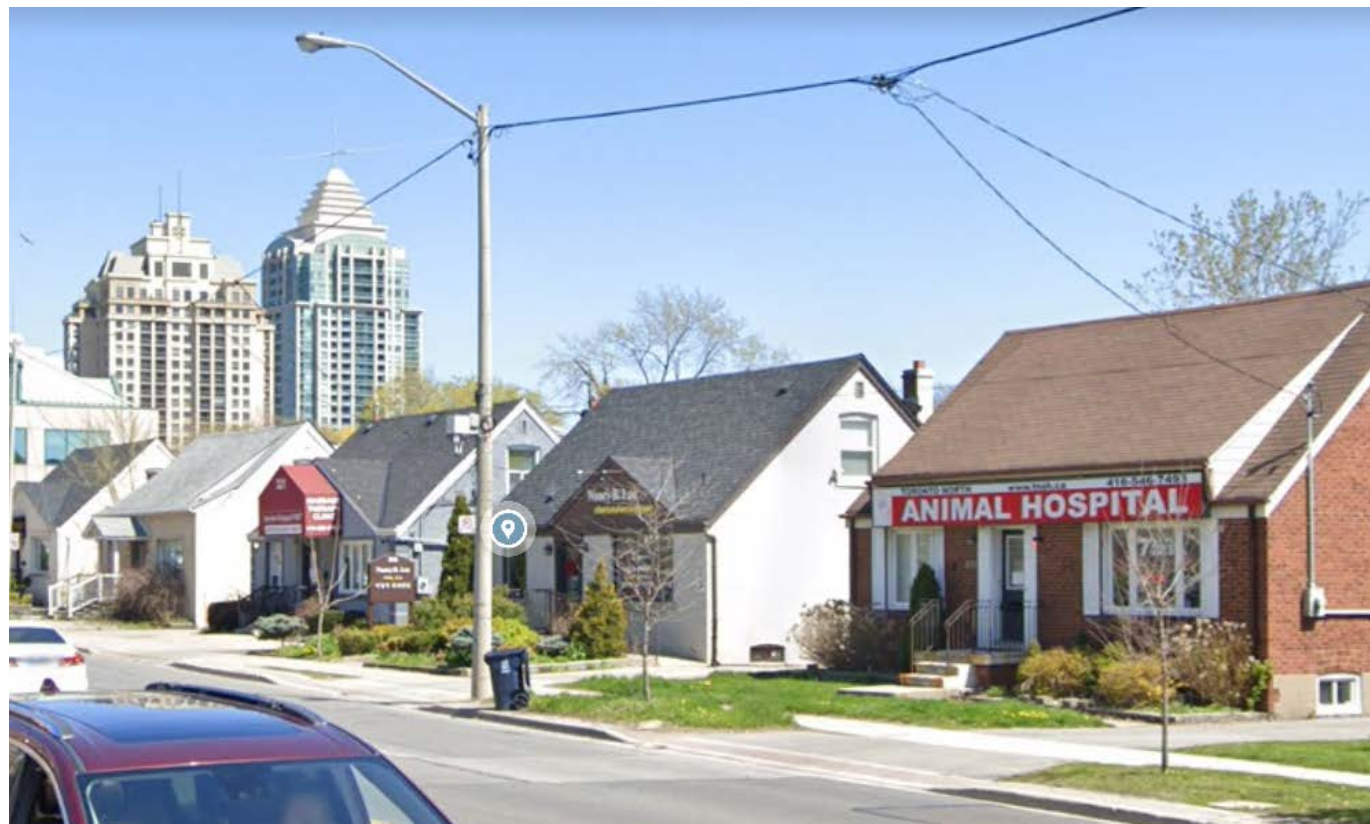
■ Institutional Areas

Institutional Areas are made of major educational health and governmental uses with their ancillary uses

Land Use - Existing Conditions



What uses do you rely on to meet daily living needs in your neighbourhood?



Community Services and Facilities



Which community services and facilities do you use in the area and what improvements would you like to see for those facilities, if any?

Where would you like to see community services and facilities located based on location criteria such as near parkland, close to transit, on major arterial road or in proximity to other amenities?

