

# Blantyre Park Improvements Public Information Meeting

Engagement Phase 2: Exploring Options  
June 20, 2023





**Thank you**  
**for joining!**

# Land Acknowledgement

I'd like to begin by honouring the land that I'm on. If you are not currently in Toronto, I encourage you to learn about the lands you're on.

We acknowledge the land we are meeting on is the traditional territory of many Nations including the Mississaugas of the Credit, the Anishinabeg, the Chippewa, the Haudenosaunee and the Wendat peoples and is now home to many diverse First Nations, Inuit and Métis people. We also acknowledge that Toronto is covered by Treaty 13 with the Mississaugas of the Credit.



# Today's Meeting Agenda



The **purpose** of this public information meeting is to review the results of Phase 2 engagement and learn about next steps.



Welcome and introductions



Agenda

1. Project Overview
2. Design Options
3. What We Heard:
  - Online Survey (**966+ responses!**)
  - Classroom Workshops
4. Frequently Asked Questions
5. Next Steps



## City of Toronto Parks Forestry and Recreation

---

**Inna Olchovski**

Senior Project Manager

**Arash Yousefi**

Senior Project Coordinator

**Kim Behrouzian**

Senior Public Consultation Coordinator



## Design Consultant Team

---

### **Cherie Ng**

Architect, Cherie Ng Architect Inc.

### **Lori Philps**

Landscape Architect, Victor Ford and Associates Inc.



# Project Overview

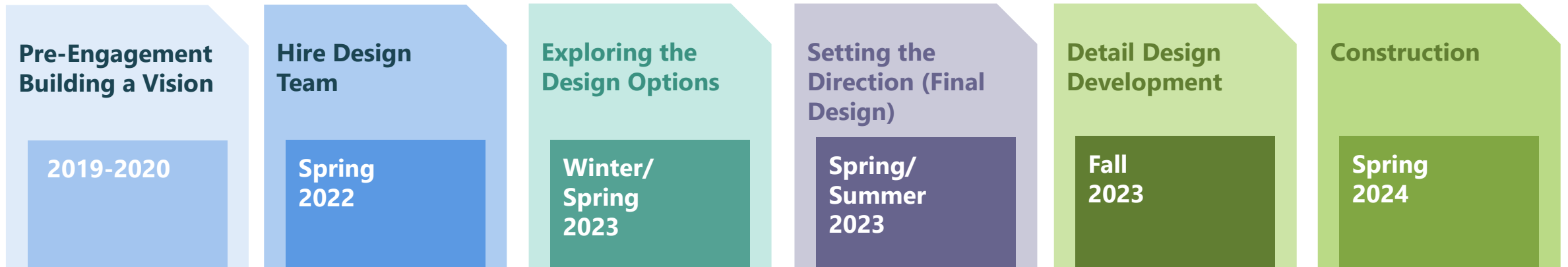
5 MINUTES

# Project Background

## Project Goal:

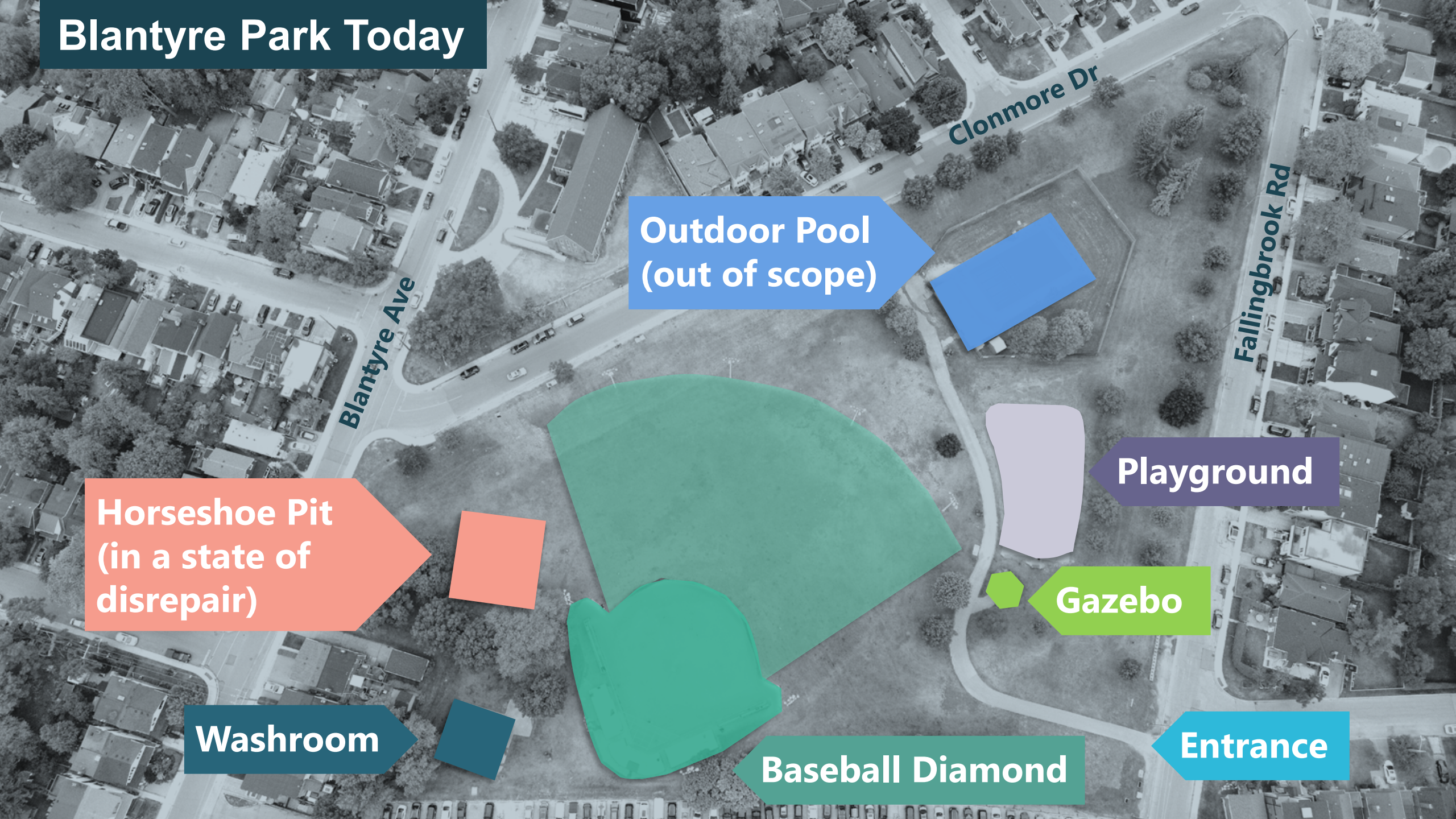
Develop a new park design that enhances the landscape and amenities in order to support its current and future use and to improve park accessibility and safety.

## Project Timeline:





# Blantyre Park Today



Blantyre Ave

Clonmore Dr

Fallingbrook Rd

Outdoor Pool  
(out of scope)

Horseshoe Pit  
(in a state of  
disrepair)

Playground

Gazebo

Washroom

Baseball Diamond

Entrance



# Phase 1 Engagement – What We Heard

The park is used for **dog walking** and hosts a strong dog walking community.

Many people mentioned they enjoy **tobogganing down the north slope** in the winter.

Pool is a summer neighbourhood **hub for recreation** and **swimming lessons**. It is often overcrowded.

People appreciate the **open space, mature trees and beauty** of the Park.



Park is well used for **organized sports**: baseball, soccer, pedalheads bike camp, rugby.

People use the park for **passive uses**: walking, sitting, reading, gathering, eating, playing games.

**Playground** is heavily used year round.

# Phase 1 Engagement – Design Objectives

## TO CONNECT

- Connect park amenities with a pathway system that integrates **accessible entryways** from adjacent streets
- Make surrounding **streets safer** for pedestrians

## TO MAKE NEW

- Prioritize multi-purpose and multi-seasonal **amenities**
- Investigate opportunities to add **new amenities** prioritized by community members
- Introduce measures to **address dogs-off leash** and/or explore a suitable dogs off-leash area

## TO PRESERVE & ENHANCE

- Protect and **enhance existing well loved park amenities**: baseball, pool, informal tobogganing hill, and playground
- Expand **tree canopy cover** by planting more trees.
- Add **more seating, a drinking fountain and extra litter bins**

# The Opportunities

1. **Upgraded playground** with new equipment and accessible surfacing
2. **New programming options** are introduced including a splash pad, fitness station, and multi-use play area
3. **Design related improvements** focus on accessibility, seating, and planting

Note: Existing park programming such as the baseball diamond will remain as-is. The horseshoe pit is in a state of disrepair and is being considered for new programming.



# The Opportunities

City staff are reviewing conditions of the outdoor pool and change room facilities and are determining scope of work for improvements.



# The Opportunities

## Neighbourhood Improvements:

- A fenced space for dogs to safely exercise outdoors and socialize will be included in the design for the future park at [411 Victoria Park Ave.](#), located within 800 metres (approximately eight minutes) north of Blantyre.





# Design Options

10 MINUTES



# Overview of the Overall Design

## Landscape

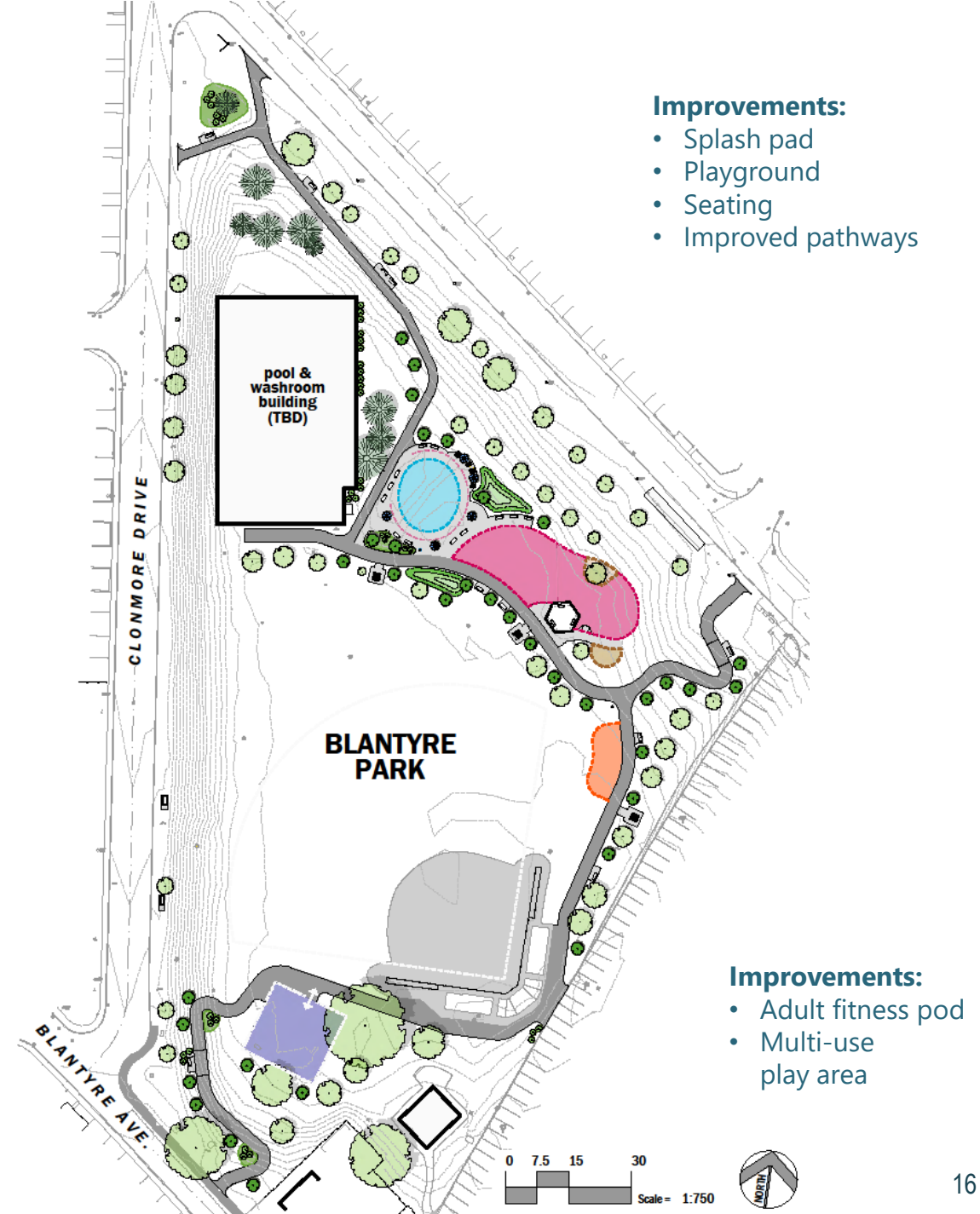
- New splash pad
- New playground
- New Adult fitness pod
- New multi-use sports pad
- New and improvements to the pathway system
- New seating (café style tables and benches)

## Streetscape

- Potential new sidewalks along Clonmore Drive and Fallingbrook Road

## Existing features to remain:

- Baseball diamond
- Washroom building
- Gazebo



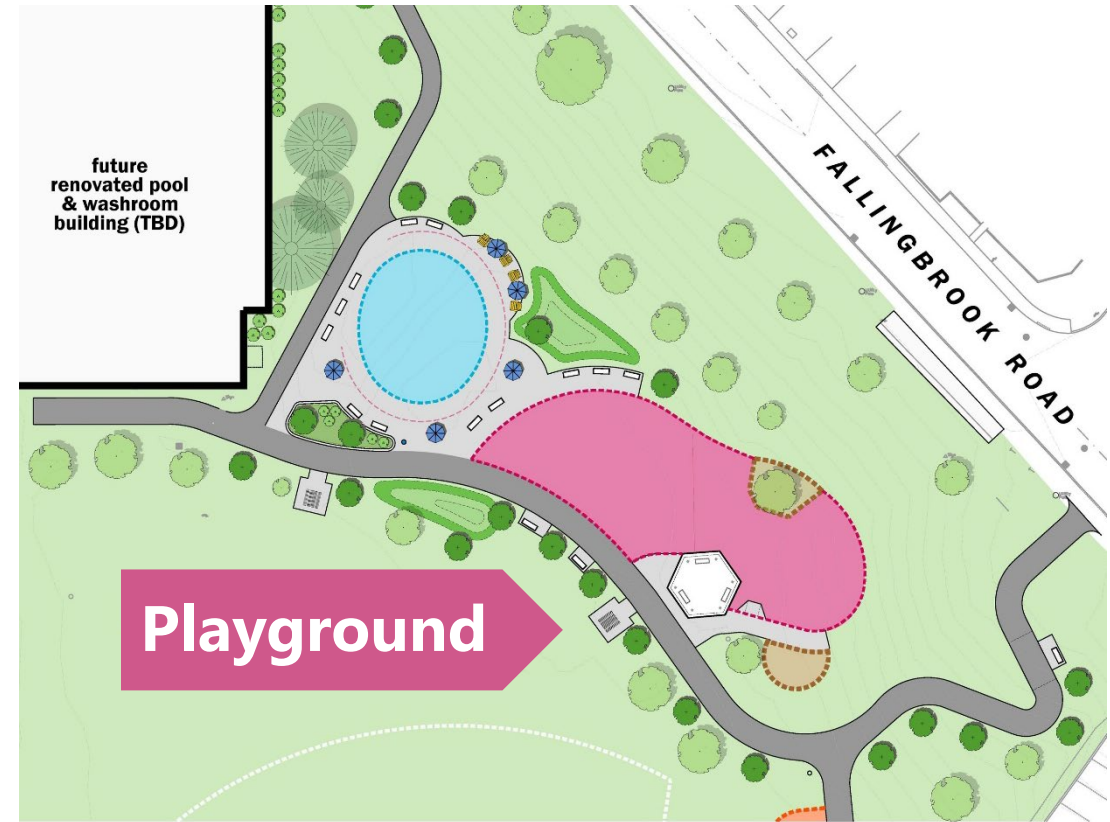


# The Playground

## Playground Option A



## Playground Option B



All of the equipment options are placed over a colourful partly engineered wood, partly rubberized safety surface that is accessible for people with mobility devices and strollers.

# The Playground



- Disc Swing
- Belt Swing
- Sand and Water Table
- Spinner
- Curved Slide
- Double Slide
- Rock Climbing
- Net Climbing

- Ladybug Spring Rider
- Spinner
- Straight Slide
- Double Curved Slide
- Tight Rope Walker
- Net Climbing
- Double Curved slide
- Double Slide

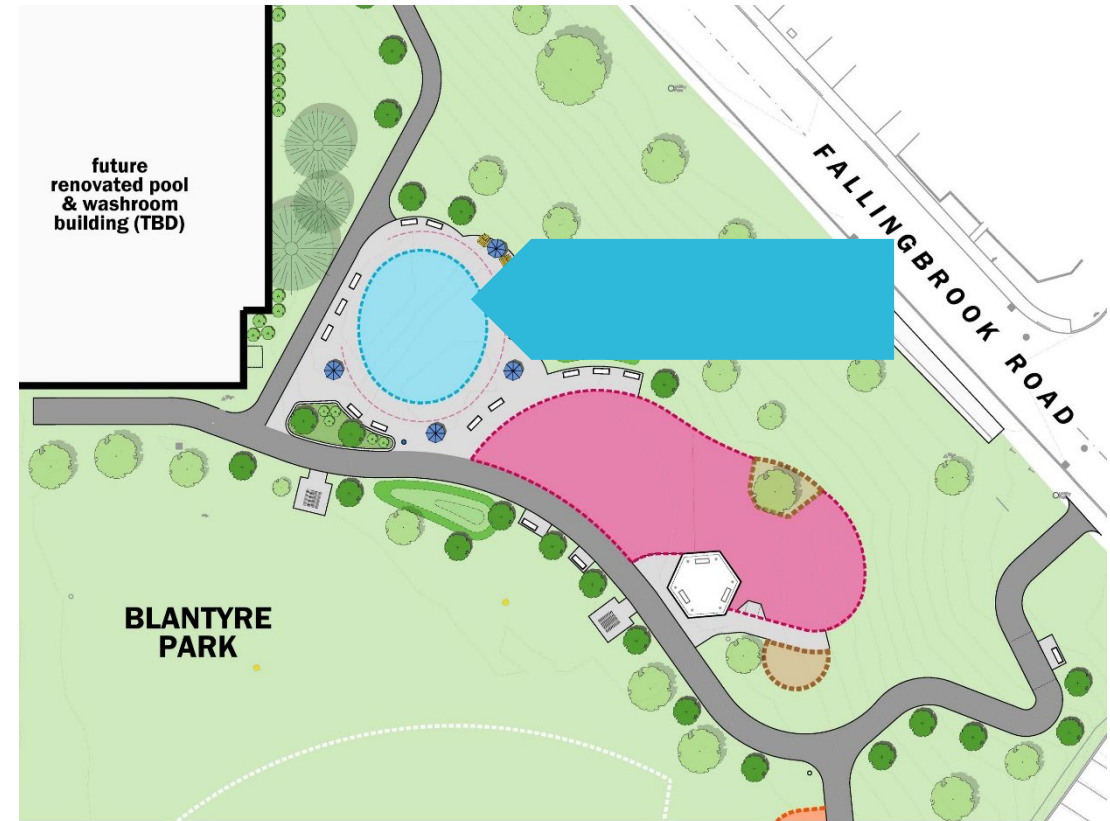


# The Splash Pad

## Splash Pad Option A – Tree Theme



## Splash Pad Option B – Aquatic Theme



The splash pad is located on an accessible concrete surface. Park users can turn on the splash pad in warmer months with the touch of a button. Several benches border the edges of the splash pad and the new accessible pathways.



# Fitness Equipment Area



**Precedent of a fitness area including custom benches, a climbing cargo net, fitness hurdles and pull up bars.**



The fitness area is designed to serve community members of diverse ages, interests, and abilities.

# Multi-Use Play Area

## Play Court and Table Options



- Pickleball
- Pickleball and Tennis
- Basketball
- Tennis
- Ping Pong Table
- Chess Table
- Horseshoe Pit



The multi-use play area will be designed to serve community members of diverse ages, interests, and abilities.



# What We Heard

15 MINUTES

# Phase 2 Engagement

**In June, we heard feedback from community members on the design options for Blantyre Park.**

**1,000+**

**community members have participated!**





# The Playground

## WHICH PLAYGROUND OPTION DO YOU LIKE BEST?

### Playground Option A – 413 responses (43%)



### Playground Option B – 340 responses (35%)



### No Preference – 213 responses (22%)



#### MOST POPULAR FEATURES:

- Climbing, slides, belt and disc swings, and the spinner toys



#### MOST DISLIKED FEATURE:

- Sand and water table



# The Playground

## ADDITIONAL FEEDBACK TO MAKE THE PLAYGROUND MORE WELCOMING AND ACCESSIBLE:

- Do not include **sand and water buckets** as they are messy
- Ensure the **playground surface** is accessible and safe
- Provide **lots of swings as they are popular**, including toddler and accessibility swings
- Include **shaded seating areas** for families to sit while watching their kids
- Provide **play features for 2-5 age group** (consider appropriate heights and enclosures)

# The Playground

## WHAT COLOUR FAMILY DO YOU PREFER FOR THE EQUIPMENT AND SURFACING?



**1. Aqua Blues (36%)**



**2. Light Greens (29%)**

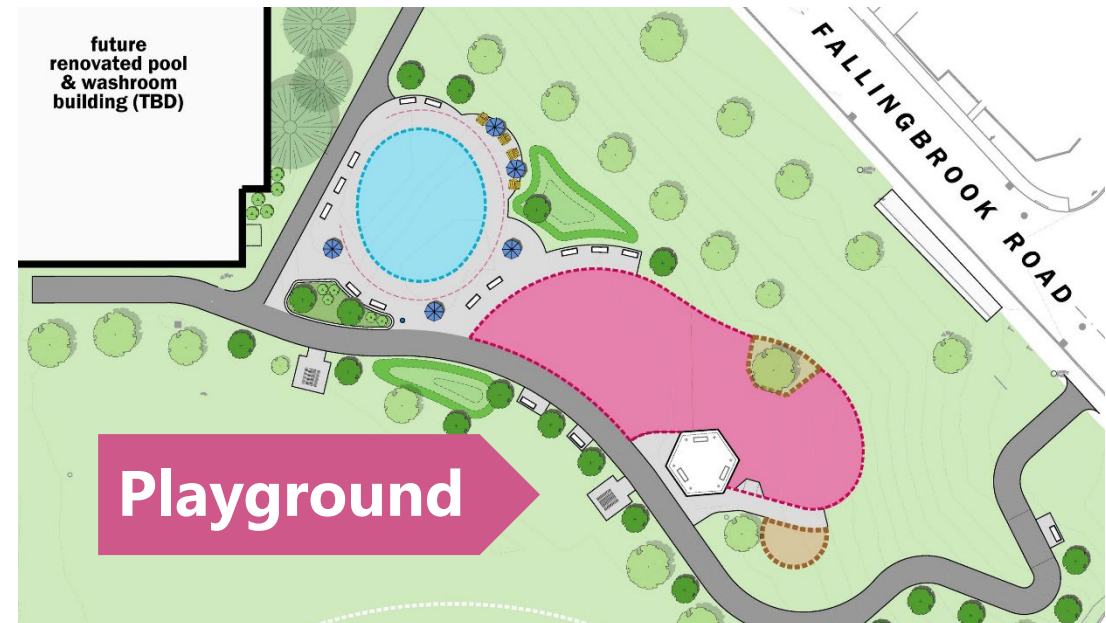


**3. Dark Greens (24%)**



**4. Reds (11%)**

Playground equipment will be placed over a colourful partly engineered wood, partly rubberized safety surface that is accessible for people with mobility devices and strollers.



# The Splash Pad

**Splash Pad – Tree Theme – 411 responses (43%)**



**Splash Pad – Aquatic Theme – 442 responses (46%)**



**No Preference – 98 responses (10%)**



# The Splash Pad

## ADDITIONAL FEEDBACK TO MAKE THE SPLASH PAD MORE WELCOMING AND ACCESSIBLE:

- Ensure the **splash pad surface** is accessible and non-slip
- Add a **bucket water dump feature**
- Shaded **seating areas** for families to sit while watching their kids
- Ensure **off-leash dogs** will be kept away from this area



# Fitness Equipment Area



- 1. Pull Up Bars (29%)**
- 2. Exercise Bench (25%)**
- 3. Climbing Cargo Net (21%)**
- 4. Fitness Hurdles (20%)**
- 5. Other (5%)**

Other responses included a tightrope, hanging rings, balance beam, overhead ladder, and bottle filling station.

# Multi-Use Play Area

## Play Court Options



1. Pickleball and Tennis – 306 Responses (33%)

2. Basketball – 236 Responses (25%)

3. Pickleball – 138 Responses (15%)

4. Tennis – 107 Responses (11%)

5. Other – 89 Responses (5%)

Other responses included a **horseshoe pit (at least one)**, ice rink in the winter, skate park, and ball hockey.

# Multi-Use Play Area

## Game Table Options



- 1. Ping Pong – 512 Responses - (55%)**
- 2. Chess / Mancala – 207 Responses (25%)**
- 3. I don't know / Prefer not to answer – 163 Responses (17%)**
- 5. Other – 54 Responses (6%)**

Other response included none of the above and including another pickleball court instead.

# Proposed Seating

## Café-style tables, picnic tables, and benches



# 92%

**Strongly liked / liked the inclusion of café-style tables, picnic tables, and additional benches.**

Additional feedback included spreading out the benches, ensuring enough café style tables and picnic tables are available for multiple small gatherings, placing benches and picnic tables in shaded areas, and ensuring all seating is accessible.



# Youth Engagement



Playground Option A was most favoured for its climbing features and the inclusion of a disc swing.

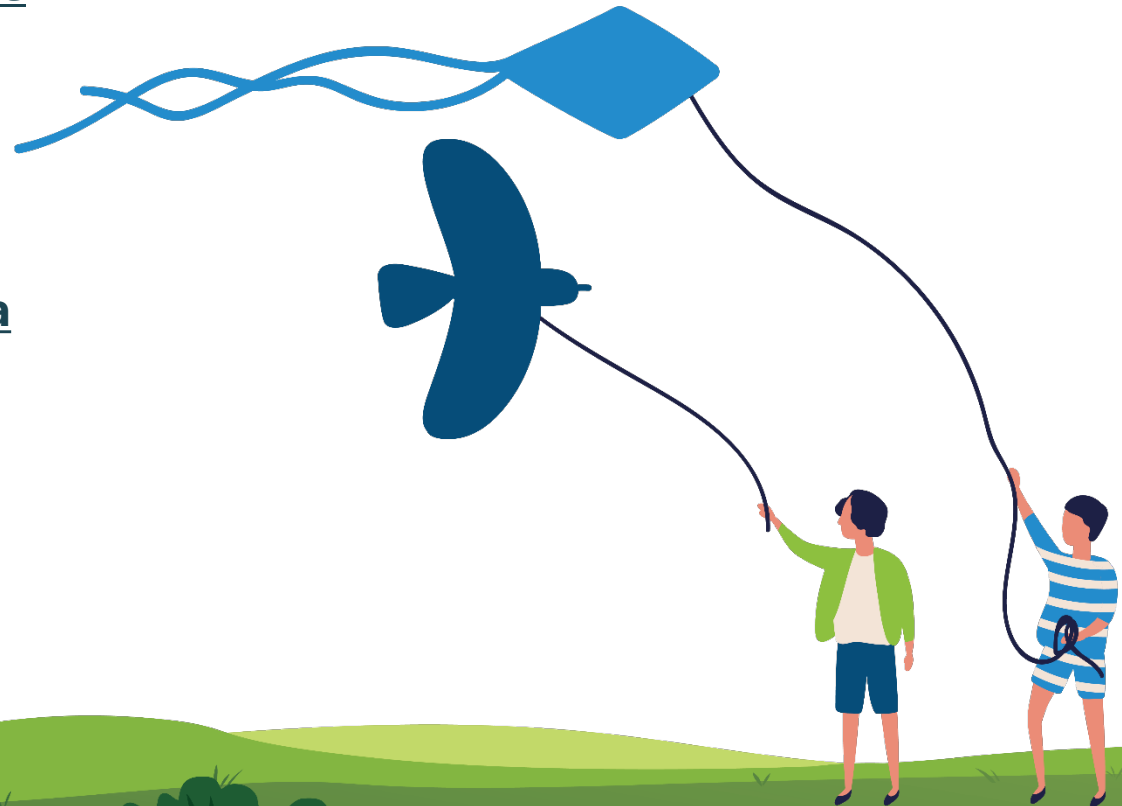
Students preferred the aquatic themed splash pad but also liked the overhead water feature provided in the tree option (e.g., water jet atop the tall faux trees) .

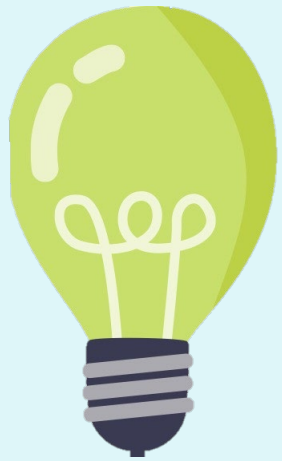
Students were split between the inclusion of a pickle ball court and a basketball court, noting there are none of either nearby.

Students liked the inclusion of a ping pong table.

## Additional feedback:

- Add an overhead climbing feature (e.g., monkey bars)
- Do not include a sand table



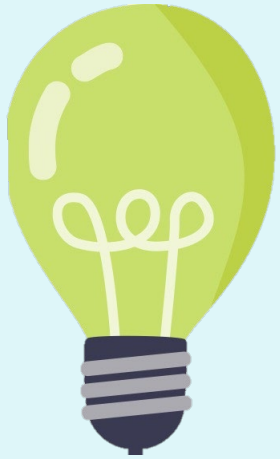


# Frequently Asked Questions

15 MINUTES

- Can we formalize and include an off-leash dog area within Blantyre Park for dogs to safely exercise?
  - **Answer:** A new Off Leash Area (OLA) is being installed within a relatively short walking distance from Blantyre park at 411 Victoria Park Ave. Signage and other measures around the playground and splash pad will be considered within the park to deter off-leash dogs.
- Is the Horseshoe Pit included in the design?
  - **Answer:** We received feedback in the survey about the horseshoe pit being used by community members. The existing horseshoe pit however is in a state of disrepair. We will consider including one horseshoe pit in the design of the multi-use play area.

- What are the accessibility improvements?
  - **Answer:** The improvements include widened pathways, an increased number of rest areas and benches, increased shading for seasonal comfort, and additional entry points along the southeast corner of the park, the Clonmore and Fallingbrook intersection, and the southwest corner of the park. The City is exploring the feasibility of adding sidewalks on Clonmore Drive and Fallingbrook Road.
- What is happening with the pool updates?
  - **Answer:** The pool will be open for the 2023 season. The City is currently completing early investigations to inform a state-of-good-repair project. The installation of the new splash pad will help to alleviate the pressure on the existing pool, and offer a variety of water play options.



# Next Steps

5 MINUTES

- 1. Phase 2 Engagement Summary will be posted on the project webpage ([toronto.ca/BlantyrePark](https://toronto.ca/BlantyrePark)) when available**

---
- 2. Work with Design Team to prepare the Preferred Design based on feedback heard on the Design Options**

---
- 3. Kick-Start Phase 3 Engagement**  
**Setting the Direction – Preferred Design and Engagement**

# Blantyre Park Improvements Project Contacts



**Arash Yousefi**

Senior Project Coordinator

Arash.Yousefi@toronto.ca

## More questions?

You can always **send your comments and questions to us after the meeting**. A member of the project team will contact you with answers to your questions.



**Kim Behrouzian**

Senior Public Consultation Coordinator

Kim.Behrouzian@toronto.ca