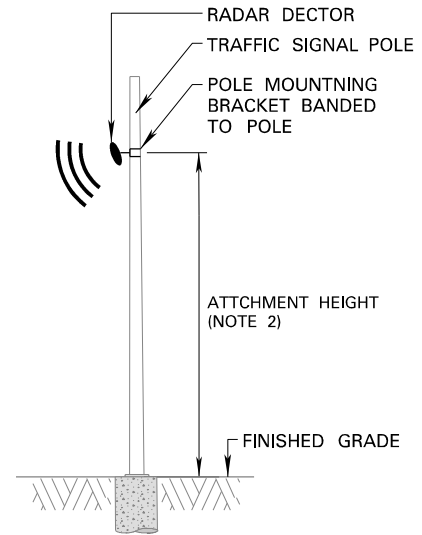
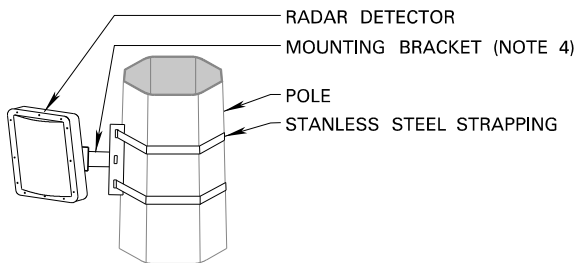


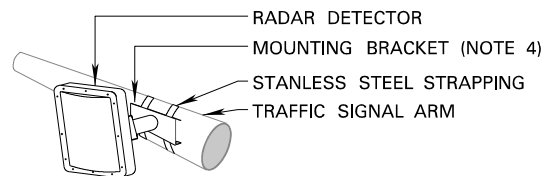
RADAR DETECTOR
PLACEMENT DETAIL



RADAR DETECTOR
MOUNTING DETAIL



POLE MOUNT
BRACKET DETAIL



TRAFFIC ARM MOUNT
BRACKET DETAIL

NOTES

1. REFER TO CONTRACT DRAWINGS FOR RADAR DETECTOR LOCATIONS.
2. RADAR DETECTORS SHALL BE MOUNTED 4.5m TO 10.5m ABOVE FINISHED GRADE.
3. RADAR DETECTORS SHALL BE INSTALLED NO LESS THAN 2.0m FROM THE DESIRED DETECTION ZONE(S) WITH A RANGE UP TO 42m.
4. STANDARD 152mm MOUNTING BRACKET FOR RADAR DETECTOR.
5. WHERE POSSIBLE RADAR DETECTORS SHALL BE POSITIONED TO DETECT THE DETECTION ZONE INTENDED TO BE CAPTURED AS WELL AS CAPTURING ADDITIONAL APPROACHES WITHIN ITS DETECTION FIELD TO OPTIMIZE SCATS SYSTEM ZONE COVERAGE.