

# Welcome

## Consultation on the Revised Proposal for Ontario Place

Welcome to the public consultation on the resubmission of the Ontario Place application. This is an opportunity to hear your feedback on the proposed changes to the design.

### Event Agenda

**3:00 PM:** Open House Panels

**6:00 PM:** City and Applicant Presentations

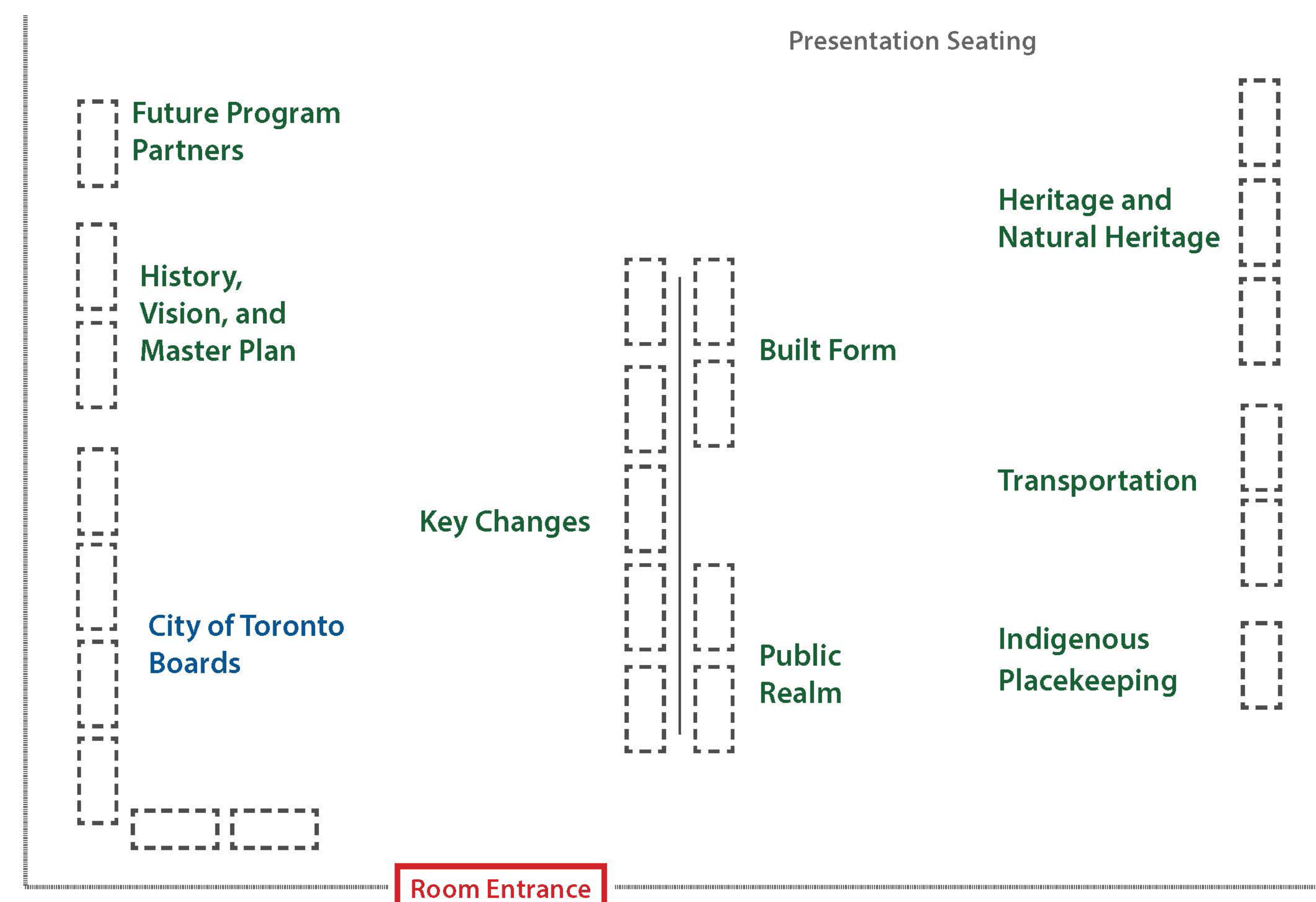
**7:00 PM:** Facilitated Question and Answer

**8:00 PM:** Open House Panel Boards

**8:30 PM:** Event Close



### Map of the Room



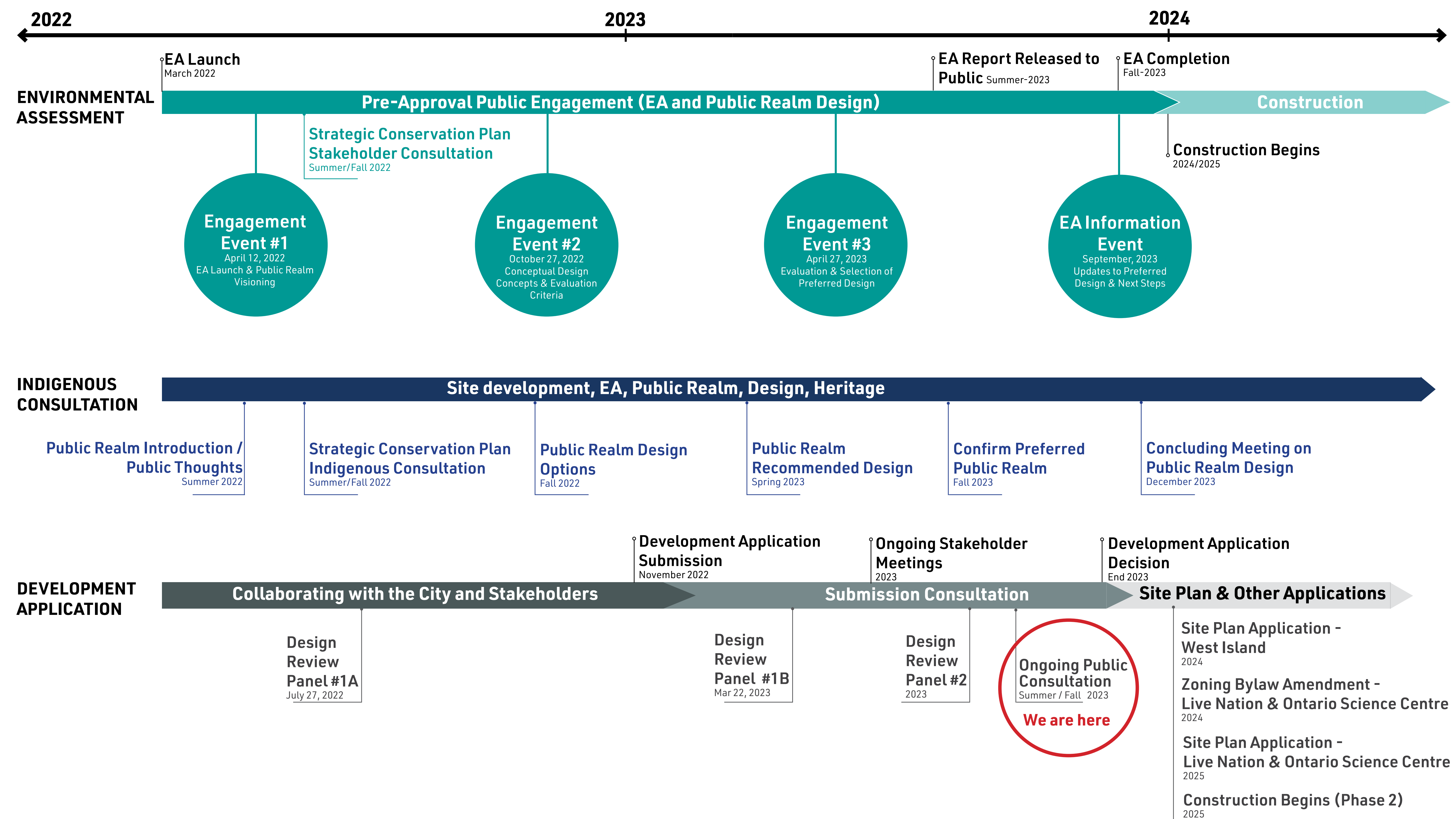
Registration



# Development Application

## Project Schedule and Engagement

The project team has undertaken a multi-year process of engagement and iteration for the Environmental Assessment and the Development Application, including a separate and ongoing Indigenous Consultation process.



### Feedback on the Nov. 2022 Development Application:

- 1 Prioritize the Public Experience**
  - Concern that the private areas and building size could diminish the public experience
  - Provide pathways through the West Island in addition to the shoreline
  - Make the entrance to the West Island feel public
  - Public realm master plan design directions are generally encouraging
- 2 Prioritize Heritage**
  - The Hough landscape experience and its intents
  - Views to the Pods and Cinesphere
  - Consider the built form relationship to the Pods and Cinesphere
- 3 Transportation and Parking**
  - Prioritize transit and active transportation
  - Reduce vehicular access mode share and parking



The November 2022 Development Application - Master Plan



# Project Overview

## The History and Vision for Ontario Place

The creation of Ontario Place was one of the province's most ambitious endeavours, with the construction of a series of artificial islands intended as a major recreational attraction along the waterfront.

Over time, the waterpark and other attractions were outcompeted by newer facilities in the region, and the pods and Cinesphere failed to sustain a permanent tenant.

Today, the site is in need of structural and shoreline reconstruction, flood mitigation, soil remediation, improved access to the city, and reinvestment in the quality of the public realm.

1971  
ONTARIO PLACE OPENS



Early 1990s  
EXPANDING THE ISLAND AND PARK PROGRAMMING



Early 2010s  
CLOSURE AND REDEVELOPMENT EFFORTS



CONCERTS AT THE FORUM



CHILDREN'S PLAY VILLAGE



WILDERNESS ADVENTURE RIDE



MOLSON AMPHITHEATER



EXPANDING THE WATERPARK



SEASONAL FLOODING



OPENING OF TRILLIUM PARK



CALL FOR REDEVELOPMENT



### The Challenges:



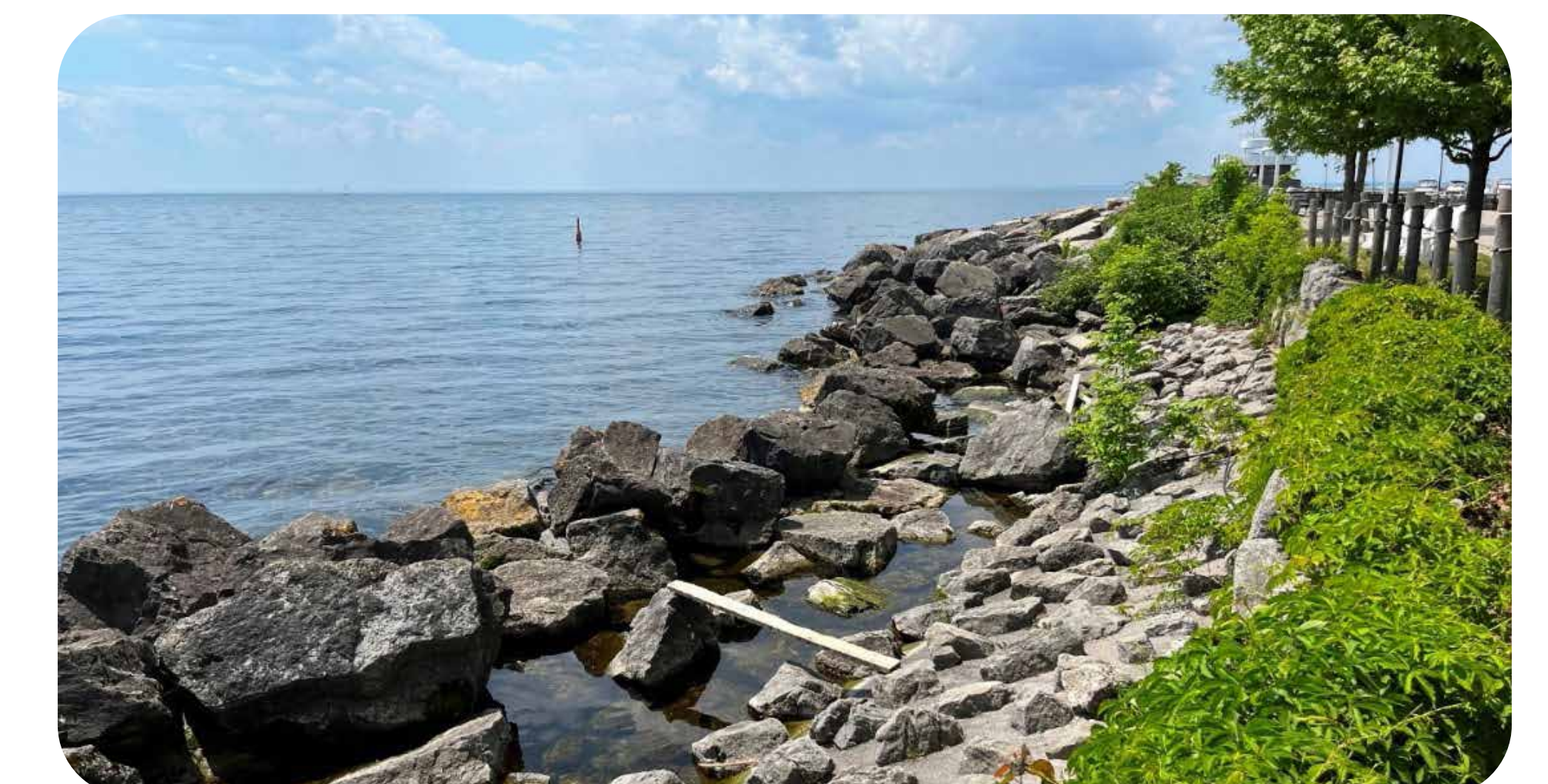
Flooding



Limited Seasonal Uses



Access and Profile



Poor water, soil and shoreline conditions



# The Opportunity

The impetus for change is to fulfill the original vision of Ontario Place as a destination for all Ontarians. The revised proposal must create a sustainable landscape that offers opportunities for recreation, learning, and gathering.

## The Opportunities:



Inviting and Welcoming to All Ontarians



Expanding on the Cluster of Event Uses



Creating Year-Round Destinations



Re-imagining the legacy of Ontario Place

## The Revised Proposal will...

- 1: Celebrate the original vision for Ontario Place
- 2: Support Ontario Place as a destination for all Ontarians
- 3: Result in an animated waterfront open space
- 4: Achieve environmental sustainability and resilience
- 5: Be economically viable and lasting



## A NEW WATERFRONT DESTINATION

The Revised Proposal for Ontario Place provides an opportunity for new entertainment and cultural attractions within a waterfront park setting, complementing Toronto's existing waterfront destinations including numerous parks that have been created and enhanced over the past decades.

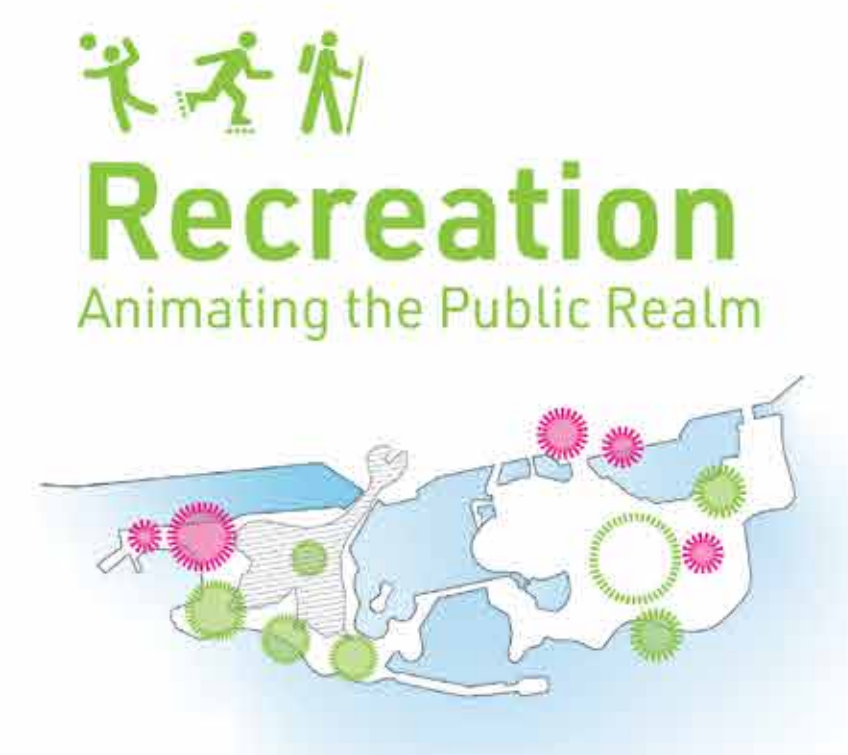
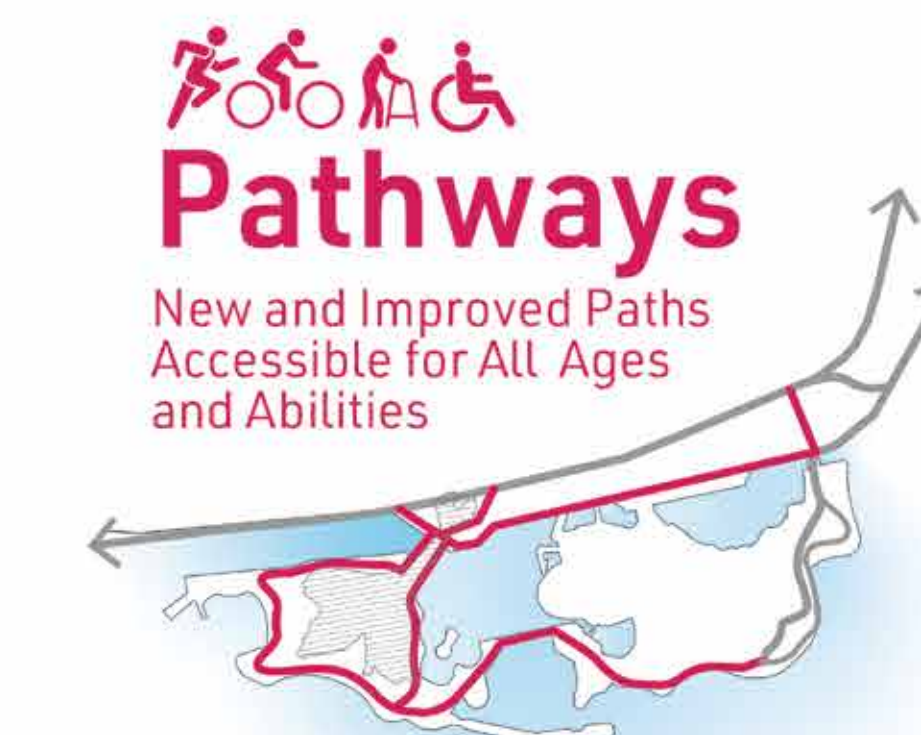
Not only will the revitalization of Ontario Place provide an important expansion of the waterfront open space network for local residents and day to day use, but public realm and proposed attractions will bring new animation and energy to Toronto's waterfront as an international destination.



# The Revised Master Plan

Ontario Place's revised proposal introduces expanded public park space, and new opportunities to gather, learn, and interact with water. New park space includes an expanded shoreline, increased tree canopy, and places for recreation and play.

## The Revised Proposal will Continue to Provide:



## The Vision for Ontario Place

Ontario Place will celebrate its heritage, original vision, and legacy as a destination for all Ontarians to enjoy. The redevelopment will recommit to waterfront access and animation, integrating this rich destination into the wider waterfront network. It will provide a strong foundation for the preservation and re-use of its unique architectural and landscape features, to advance sustainability and resilience, and to ensure the long-term success and viability of this cherished public asset.

## Key Changes

Five key changes since the November 2022 submission are described in the following panels, which were informed by extensive engagement and conversation with City staff and the public.

## The Revised Master Plan



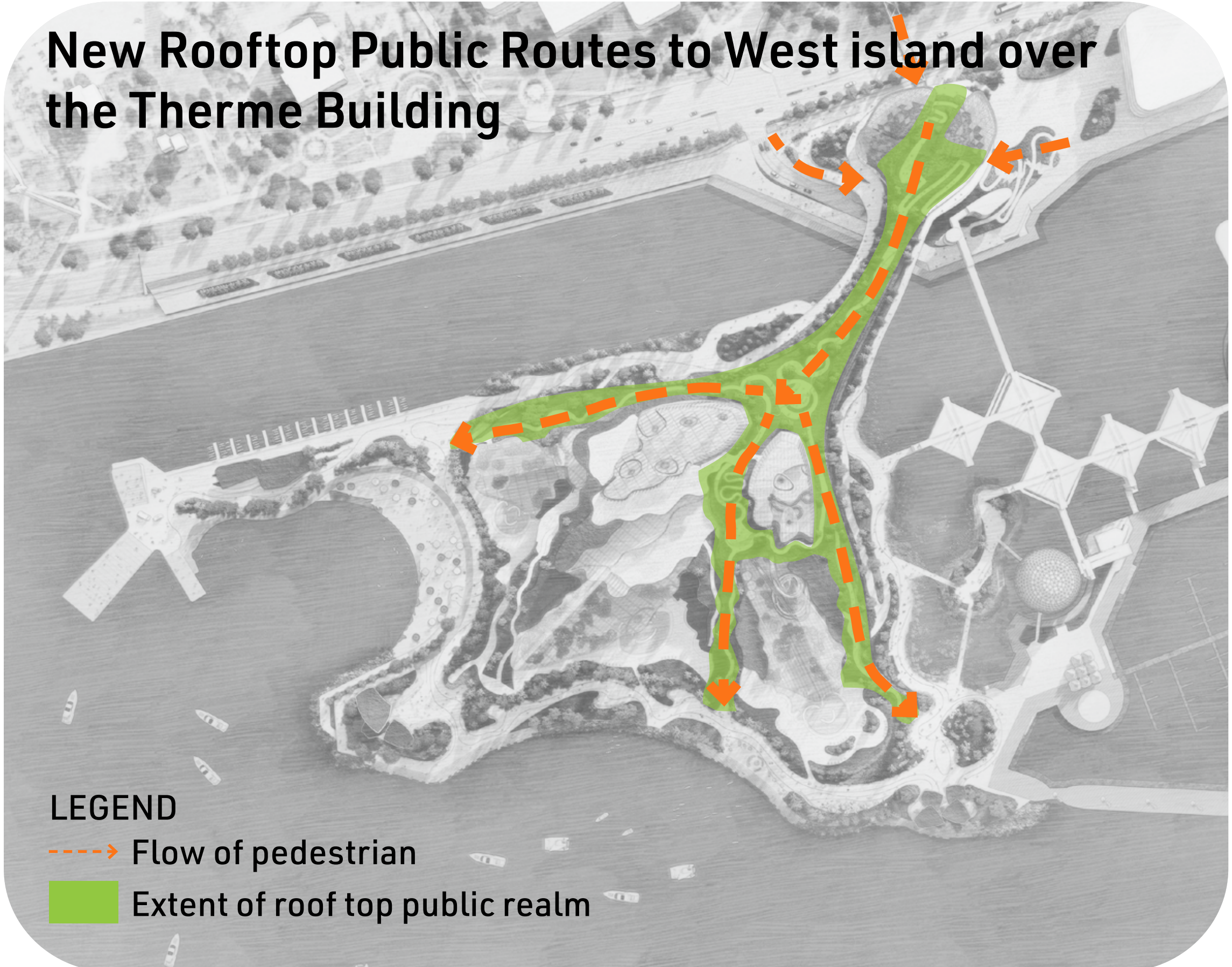


# Key Change #1

## Create a Welcoming Public Entrance to the West Island

The revised entrance pavilion centres public access to the West Island with clear signage and a grand pedestrian promenade up and over a public land bridge. Access is further supported by public bridge connections to the West Island on both the east and west sides of the land bridge.

**Responding to Your Input**  
**We Heard:** The entrance to the West Island feels like a private Therme entrance.  
**Design Response:** The entrance pavilion has been revised to prioritize direct public access to the West Island public realm, with Therme entrances to the side.  
  
New public routes have been added to the east side of the bridge and on top of the bridge, in addition to the west route.





# Key Change #2

## Extend the Landscape up over the Building

The Therme proposal has been redesigned to ensure that total public space is not lost and there is an increased investment to the publicly accessible landscape. Much of the Therme building now sits below a network of publicly-accessible landscaped spaces and pathways, introducing new vistas of the waterfront and skyline.

**Responding to Your Input**

**We Heard:** It seems that the public space is relegated to the outside of the West Island.

**Design Response:** Four acres of additional public space and pathways have been added through the middle of the West Island and on top of the Therme building.

**We Heard:** Do not privatize Ontario Place

**Design Response:** The entire site will remain in public ownership, and more public space than what exists today will be provided on-site.



**Key Statistics**

~ 12.5 acres	Total public realm at grade
~ 3.4 acres	Public realm roof space
+15.9 acres	Total public space on West Island
+35%	Increase in public space from previous submission

