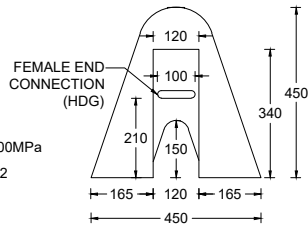


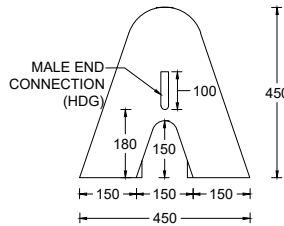
ELEVATION

NOTES:

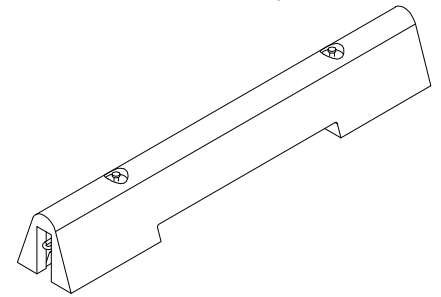
1. CONCRETE: 45MPa
2. AIR CONTENT: 6.5% ± 1.5%
3. REINFORCEMENT : CSA G30.18 Fy=400MPa
4. MANUFACTURED TO: CSA A23.1/A23.2
5. WEIGHT: 759kg



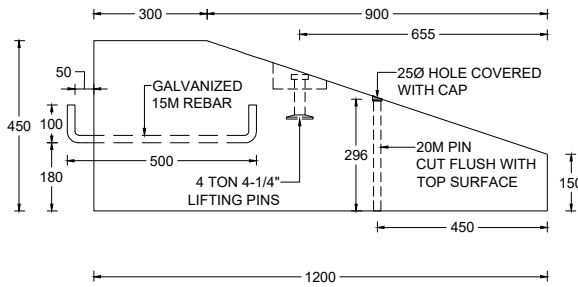
LEFT VIEW



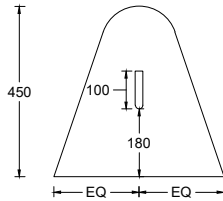
RIGHT VIEW



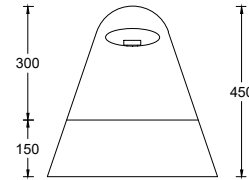
ISOMETRIC VIEW



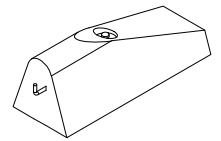
ELEVATION
(MALE END UNIT)



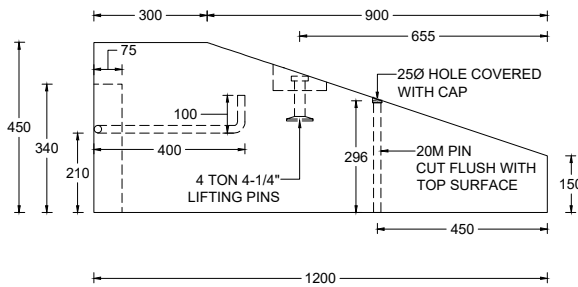
LEFT VIEW
(MALE END UNIT)



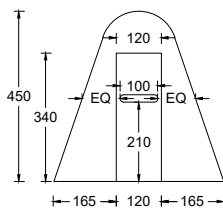
RIGHT VIEW
(MALE END UNIT)



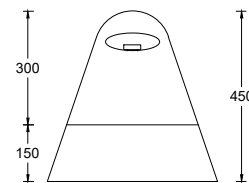
ISOMETRIC VIEW
(MALE END UNIT)



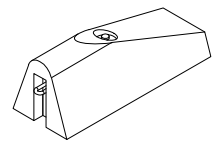
ELEVATION
(FEMALE END UNIT)



LEFT VIEW
(FEMALE END UNIT)



RIGHT VIEW
(FEMALE END UNIT)



ISOMETRIC VIEW
(FEMALE END UNIT)

NOTES (END UNIT):

1. CONCRETE: 45MPa
2. AIR CONTENT: 6.5% ± 1.5%
3. REINFORCEMENT : CSA G30.18 Fy=400MPa
4. MANUFACTURED TO: CSA A23.1/A23.2
5. WEIGHT: 319kg

All dimensions are in millimetres unless otherwise shown.



ENGINEERING & CONSTRUCTION SERVICES STANDARD DRAWING

REV 0

SEP 2023

LOW WALL BARRIER

T-603.047

NTS

SHEET 1