



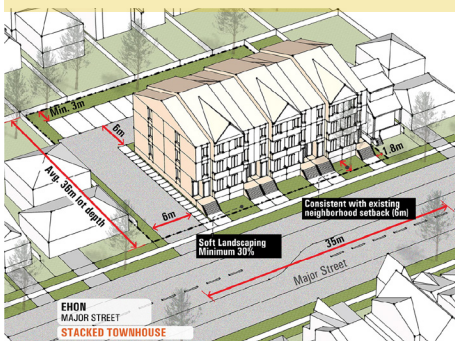
EHON Major Streets

A Fact Sheet on EHON's Major Streets Study

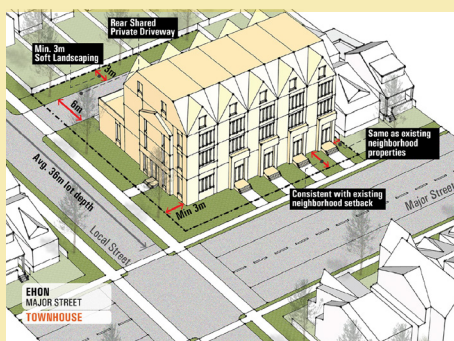
The City is studying the properties within our designated Neighbourhoods along major streets not affected by other growth policies to facilitate more low-rise housing, increase housing choice and access, and to help make Toronto a more livable city. For more information, please visit the Expanding Housing Options in Neighbourhoods - Major Streets Website at <https://www.toronto.ca/majorstreets>.

Below are models of residential buildings that could be built along major streets. They have been modelled to accommodate onsite vehicular parking.

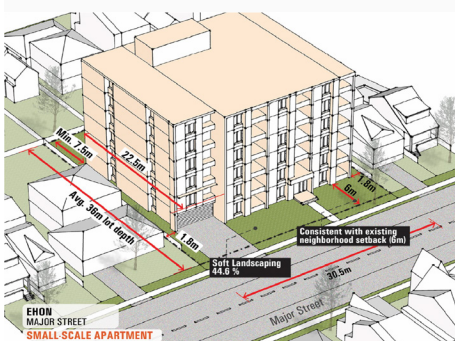
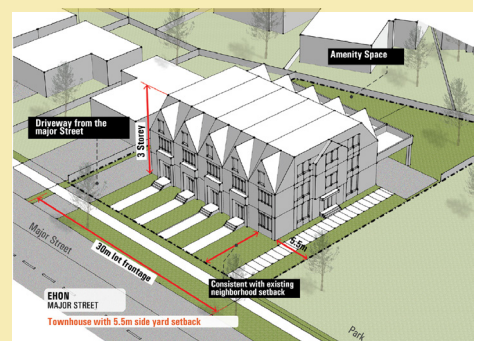
Possible Mid-Block Residential Building Options



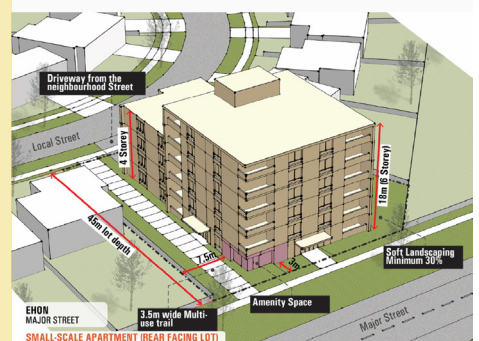
Possible Corner Site Residential Building Options



Possible Through Lot Residential Building Options



Retail space is shown in this building



A pedestrian connection to the local street is provided for here

We want your feedback! Please complete our survey, available on the EHON Major Streets Website at <https://www.toronto.ca/majorstreets>. Your feedback will be used to shape the appearance of new development that could be built on these properties.

The survey will be live until **Mid-November, 2023**.

If you have any questions or additional comments, please e-mail us at EHON@toronto.ca