

Six Points Park District Plan and Two New Parks

CAC Meeting #2:

August 14, 2023 – 6:00 PM



Land Acknowledgement

I'd like to begin by honouring the land that I'm on. If you are not currently in Toronto, I encourage you to learn about the lands you're on. We acknowledge the land we are meeting on is the traditional territory of many nations including the Mississaugas of the Credit, the Anishnabeg, the Chippewa, the Haudenosaunee and the Wendat peoples and is now home to many diverse First Nations, Inuit and Métis peoples. We also acknowledge that Toronto is covered by Treaty 13 with the Mississaugas of the Credit.



African Ancestral Acknowledgement

The City of Toronto acknowledges all Treaty peoples – including those who came here as settlers – as migrants either in this generation or in generations past - and those of us who came here involuntarily, particularly those brought to these lands as a result of the Trans-Atlantic Slave Trade and Slavery. We pay tribute to those ancestors of African origin and descent.



Meeting Agenda



Welcome & Introductions



Project Timeline



“What We Heard”: Community Engagement Phase 1



Site Background and Analysis



Draft Guiding Principles & Vision Statement



Park Network & Draft District Plan



Preliminary Program Options



Final Discussion



Next Steps

Project Team

City of
Toronto
Parks,
Forestry and
Recreation

Lara Herald – Senior Project Coordinator - Parks, Forestry and Recreation

Eli Bawuah – Senior Consultation Coordinator - Parks, Forestry and Recreation

Michael Bromley – Park Supervisor - Parks, Forestry and Recreation

Wayne Robinson – Community Development Officer, South Etobicoke Cluster

Design
Consultant
PLANT
Architect
Inc.

Mary Tremain – Engagement Lead, Partner/PLANT Architect

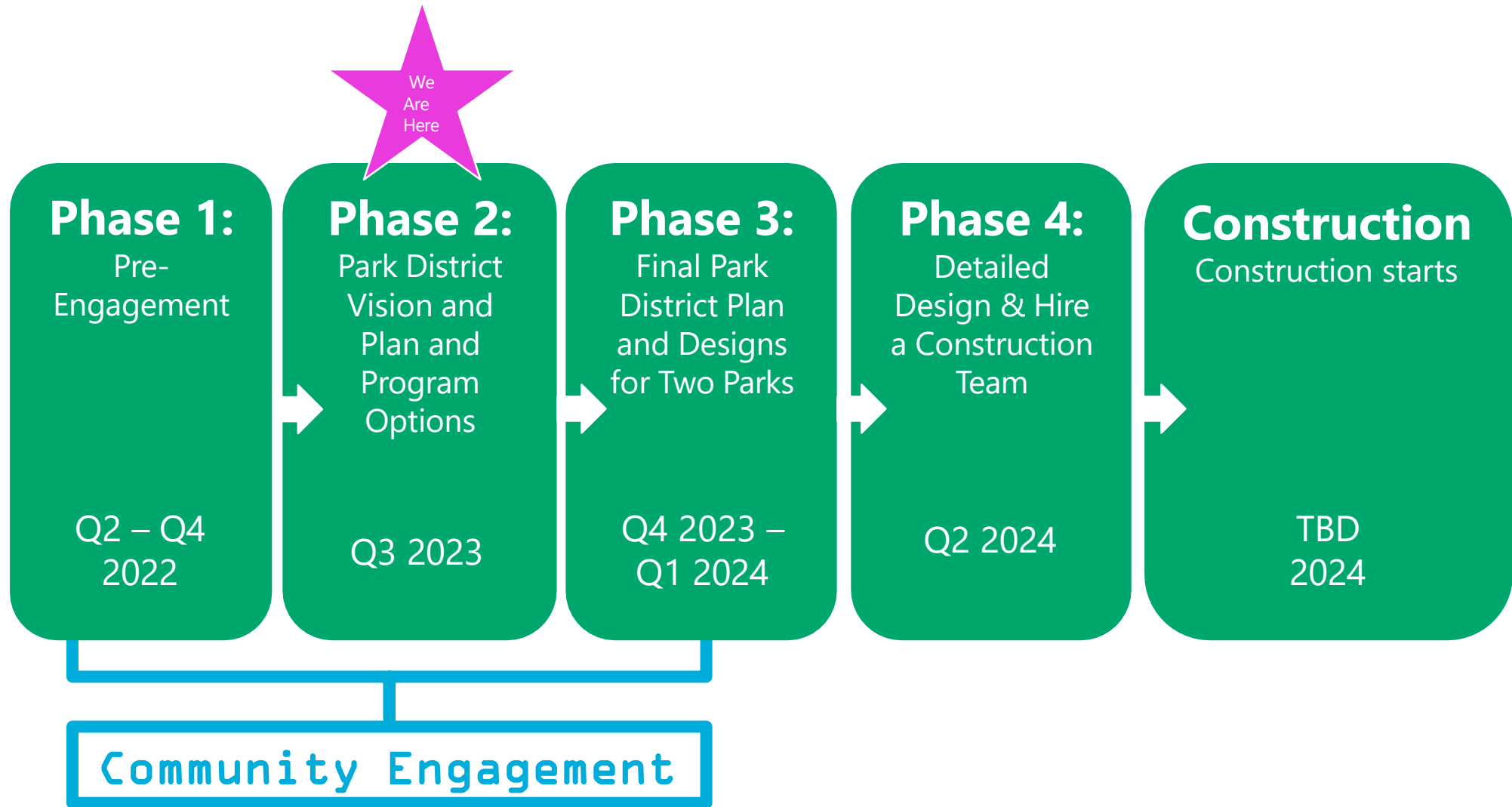
Eric Klaver – LA Design Lead, Senior Landscape Architect, Partner/PLANT Architect

Zeynep Benk – Landscape Architect/Project Manager

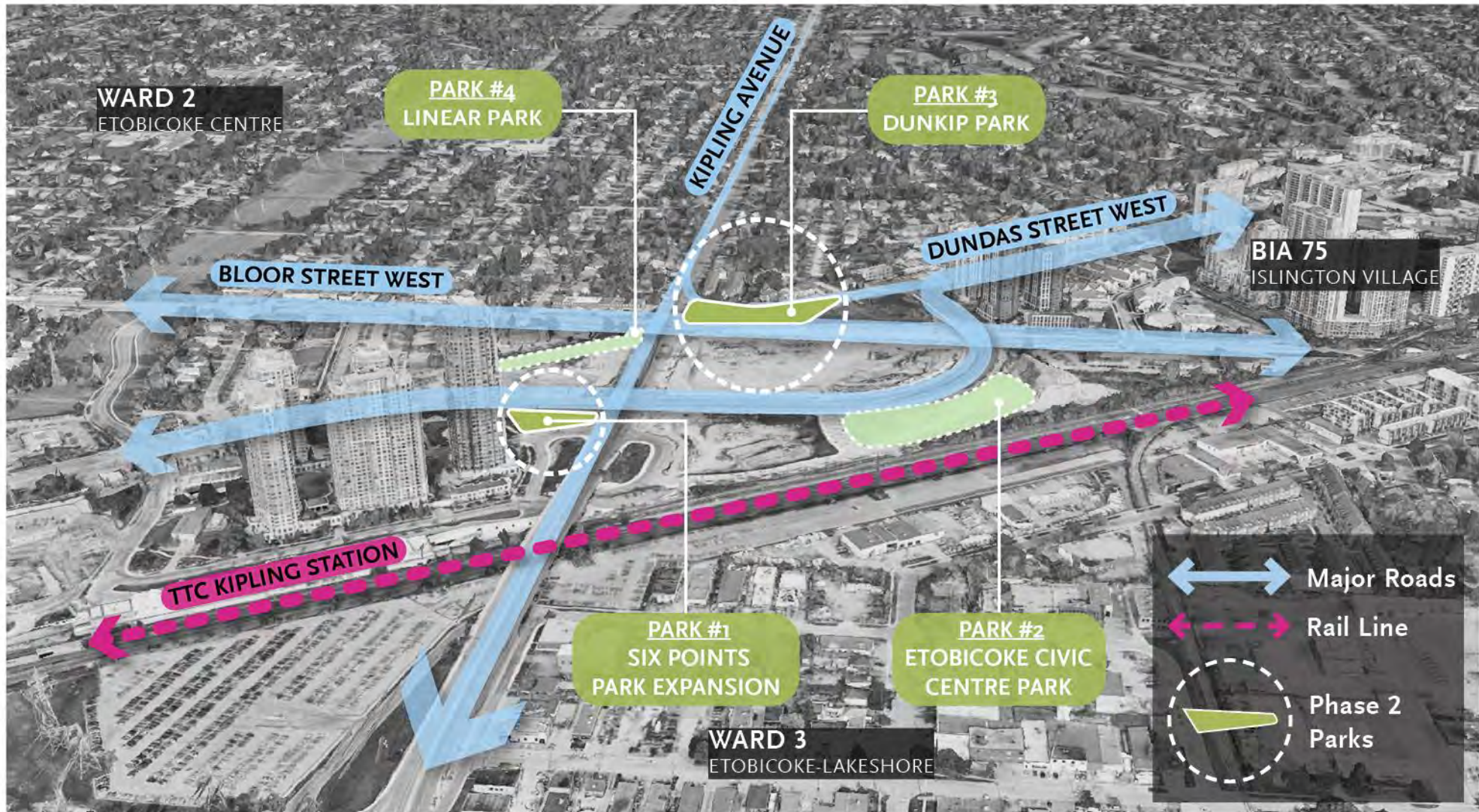
Tanya Pande – Landscape Designer

Carl Valdez – Landscape Designer

Project Timeline



Site Context



What We Heard

Community Engagement

Community Engagement Phase 1A: Pre-Engagement was **led and completed by City Staff**. This phase of the community engagement process started in summer 2022. The following were completed:

- Online Park District Thought Exchange visioning activity – November 2022
- Online park amenities visioning survey – June 2022

Community Engagement Phase 1B: Background Review, Site Investigations and Analysis is complete.

Community Engagement Phase 2A: Draft District Vision and Plan and Preliminary Park Options will be **led by PLANT with support from Saffy**.

This phase includes:

- Community Advisory Committee (CAC) meeting #1 (Complete)
- Community Advisory Committee (CAC) meeting #2 (August 14, 2023)
- Indigenous Advisory Circle (IAC) meeting #1 (August 17, 2023)
- Public Workshop – Draft District Plan and preliminary programming options (August 30, 2023)

CAC Meeting #1 – What We Heard

Accessibility and Inclusivity:

- Prioritize accessibility for all ages and abilities.
- Design inclusive spaces with amenities and seating options.
- Incorporate features like braille signs and winter path clearing.
- Cater to diverse demographics including seniors, families, and individuals with disabilities.
- Surpass minimal standards for comprehensive accessibility.

Green Space and Outdoor Amenities:

- Increase green spaces for gatherings and relief from concrete.
- Introduce amenities for families, youth, seniors, and pets.
- Enhance natural environment with pollinator gardens.
- Create paths and multi-generational spaces for various activities.

Community Engagement and Cultural Improvement:

- Involve residents in planning process.
- Reflect community values in park design.
- Provide accessible spaces for gatherings and events.
- Celebrate neighborhood's character and heritage.

CAC Meeting #1 – What We Heard

Safety and Functionality:

- Separate vehicles from pedestrians.
- Provide safe paths, seating for seniors, and multi-activity spaces.
- Address accessibility and garbage issues.
- Ensure safe spaces for diverse activities.

Park Design Amenities:

- Include public art in Dunkip Park.
- Reclaim play spaces in underutilized areas.
- Explore Off-Leash Area (OLA) concept.
- Keep and utilize mature trees to help create an "oasis" or green space that blocks out nearby traffic noise.

General Feedback:

- Concerns about dog park location at Dunkip Park due to bus stop proximity.
- Suggested alternatives: kids' park or sports court.
- Raised accessibility issues and proposed sports court for Six Points Plaza expansion.
- Proposed large year-round activity park for Etobicoke Centre.
- Recommended outdoor exercise equipment.

CAC Meeting #1 – What We Heard

General Feedback Cont'd

- Emphasized importance of accessibility and proposed RHFAC certification.
- Shared resources on RHFAC certification process.
- Proposed amenities like BBQ stations, fire pits, smoking areas, and staff meeting room.
- Suggested following Ontario, Toronto, and specialty groups' accessibility recommendations.
- Recommended application for Canadian Tire Jumpstart Inclusive Play Spaces program.

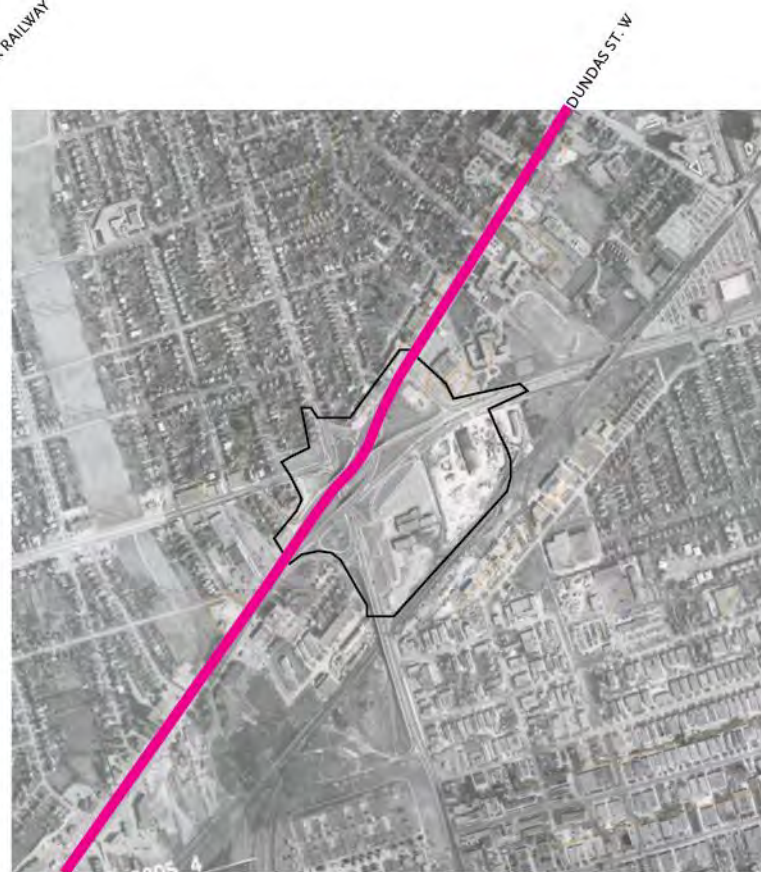
Site Background & Analysis

Historic & Current Dundas Alignment



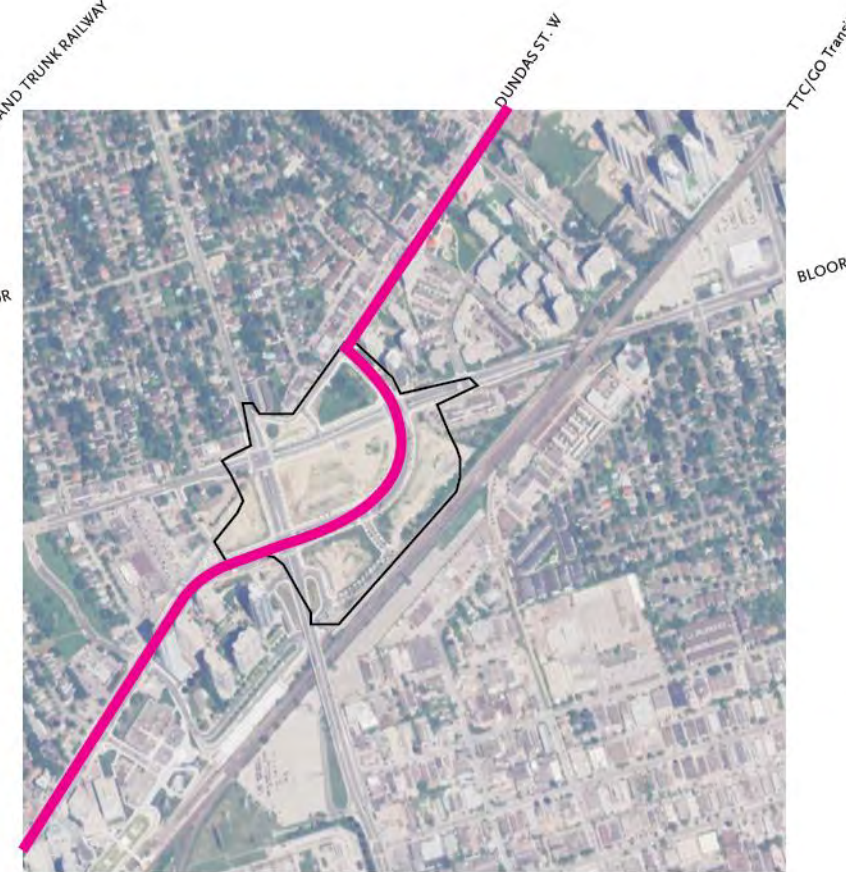
1947

KIPLING



1970

KIPLING



2021

KIPLING

Post-contact History



1986



Westwood Theatre Sign



1843 Wood House at Kipling & Dundas



1843 Dundas St. Near Six Points

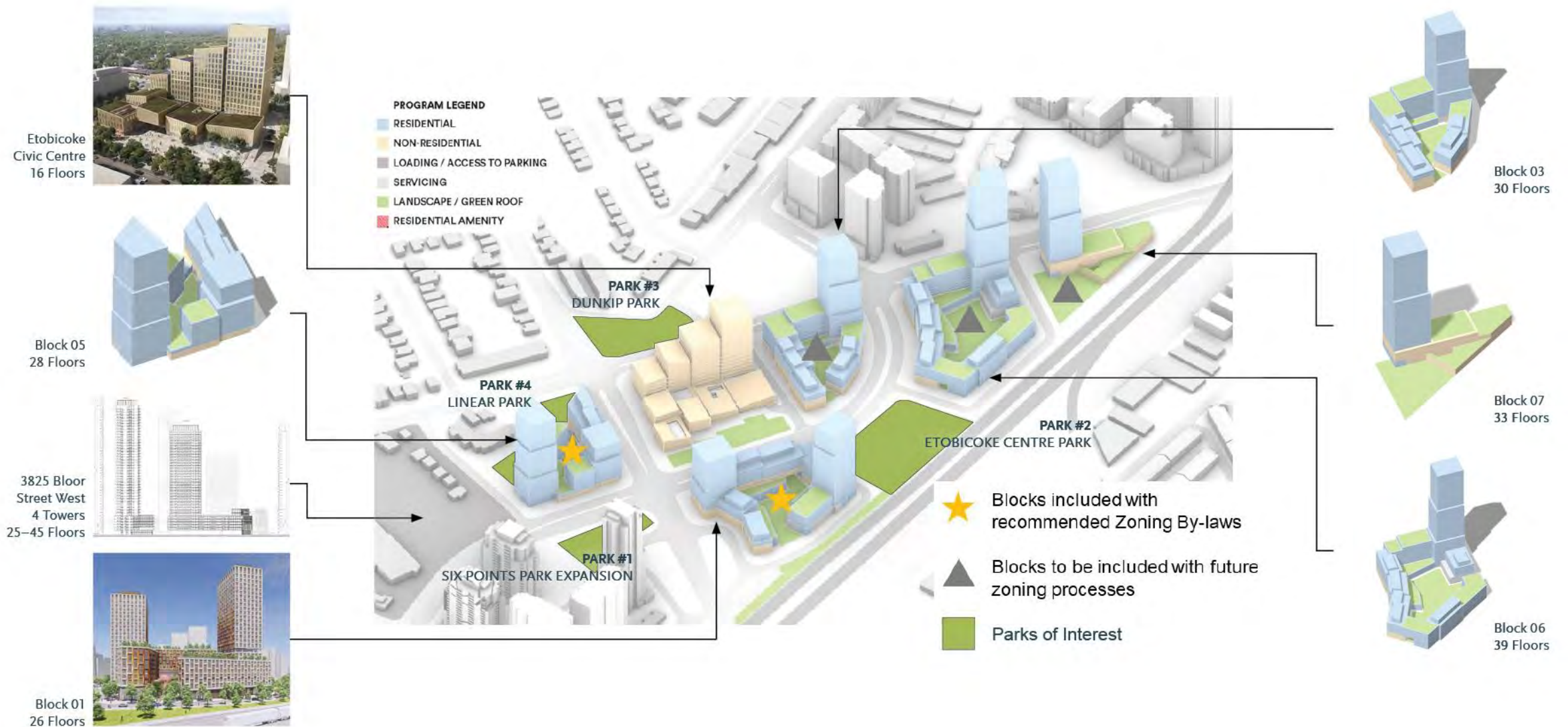


c. 1950 Wood House at Dundas & Bloor



1926 Six Points Facing East

Etobicoke Centre Planned Growth



Planned Area Development

Block 01 – 26 Floors



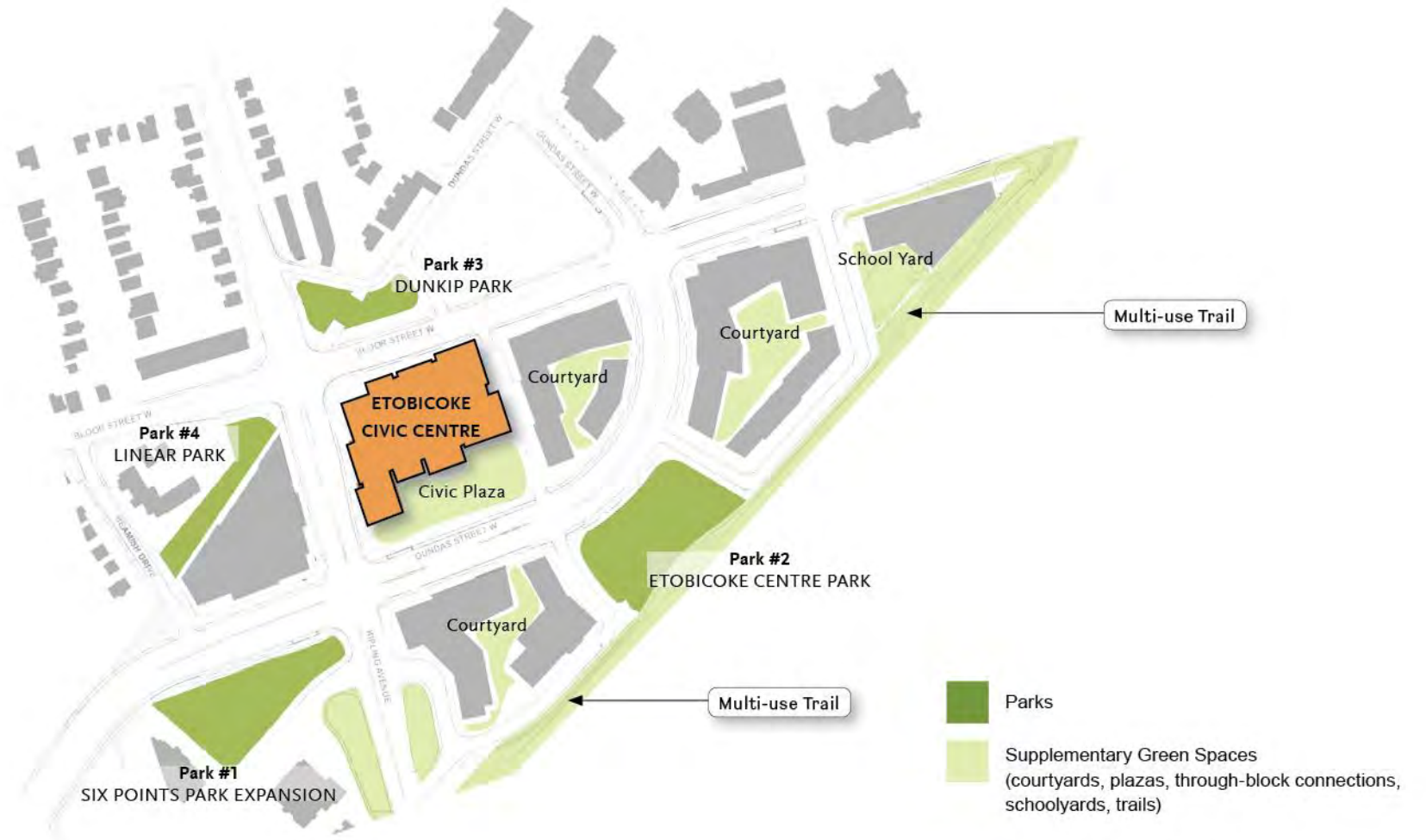
Etobicoke Civic Centre – 16 Floors



3825 Bloor Street W.
4 Towers – 25 to 45 Floors



Planned Publicly Accessible Green Spaces



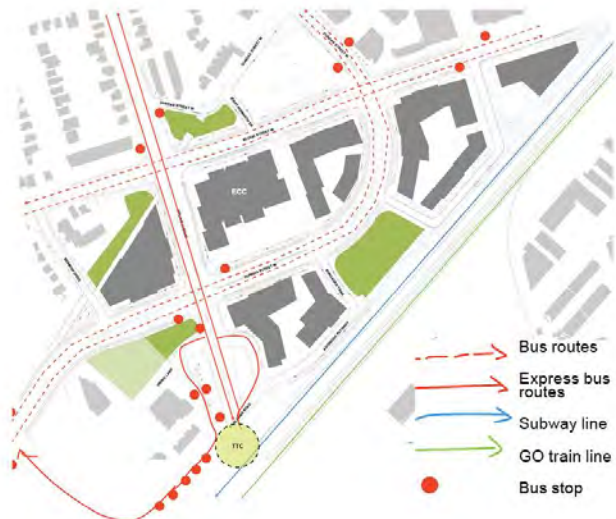
Note: Development plans are not final. Information has been taken from CreateTO Block Context Plan - Housing Now: Bloor-Kipling - Henning Larsen/Adamson Architects/PLANT Architect - October 28, 2020

Site Analysis



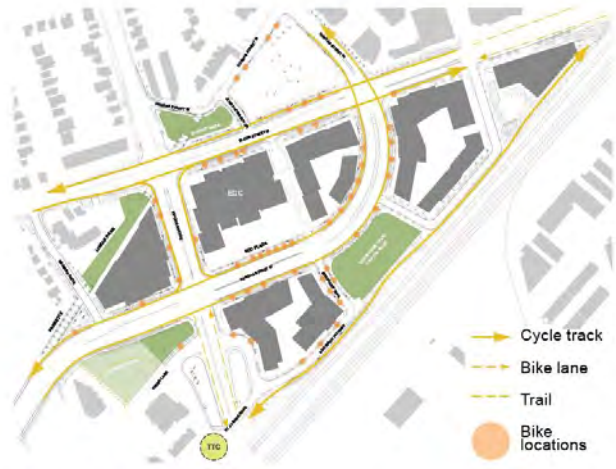
Circulation & Nodes

- Major nodes
- Minor nodes
- Park spaces
- ➔ Motorist circulation route
- ➔ Pedestrian circulation route



Public Transit

- - - ➔ Bus routes
- ➔ Express bus routes
- ➔ Subway line
- ➔ GO train line
- Bus stop



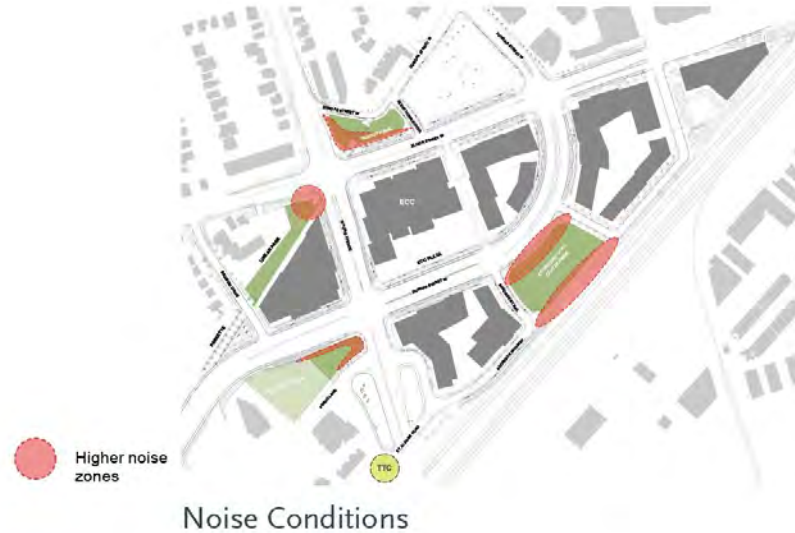
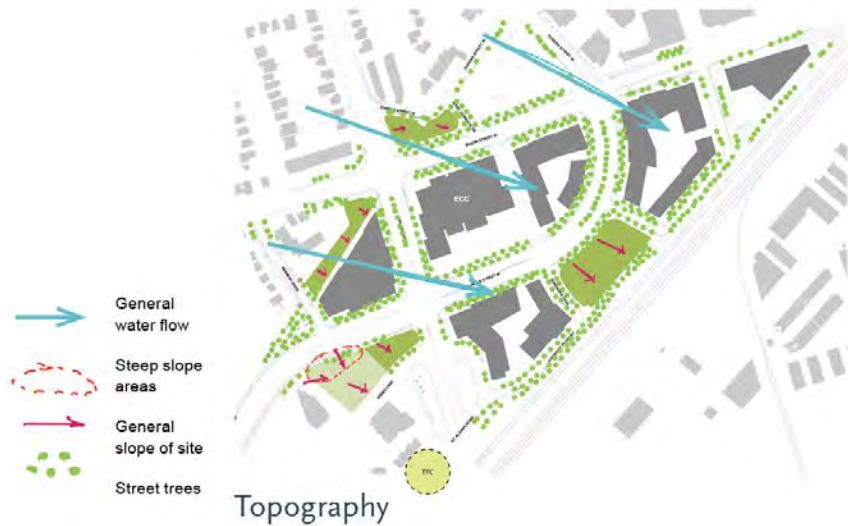
Cycling Infrastructure

- ➔ Cycle track
- ➔ Bike lane
- ➔ Trail
- Bike locations

FINDINGS:

- All four parks are well-connected to motorist, pedestrian, and cycling routes.
- Etobicoke Centre Park connects directly to the new Civic Centre plaza across Dundas St.
- Etobicoke Centre Park is the most active park in terms of proximity to circulation.
- Six Points Expansion Park is an intimate park connected to the existing park space.
- There is a visual link between Dunkip Park & Linear Park across the intersection (along the Dundas Street historical alignment.)

Site Analysis








FINDINGS:

- Urban edges create an opportunity for social interaction.
- Protected or buffered areas create opportunities for active recreation.
- Areas from within the park with views outward create opportunities for passive recreation and seating opportunities to enjoy views.
- Areas within the park with inward focus and gentle slopes create an opportunity for active recreation.
- Noise in the parks can be managed with buffer zones by sound masking or by introducing programs that are themselves noisy.
- Areas of parks with steep slopes should be made accessible.

Existing Parks & Green Spaces

5-10-15 Minute Walk Distances

LEGEND

-  WALKING RADIUS
-  ETOBICOKE CIVIC CENTRE
-  PROPOSED PARKS
-  EXISTING GREEN / OPEN SPACES
-  EXISTING PARKS



Existing Neighborhood Programs & Amenities

5-10-15 Minute Walk Distances

WALKING RADIUS
 ECC
 PROPOSED PARKS

5 MINUTE RADIUS (400m)

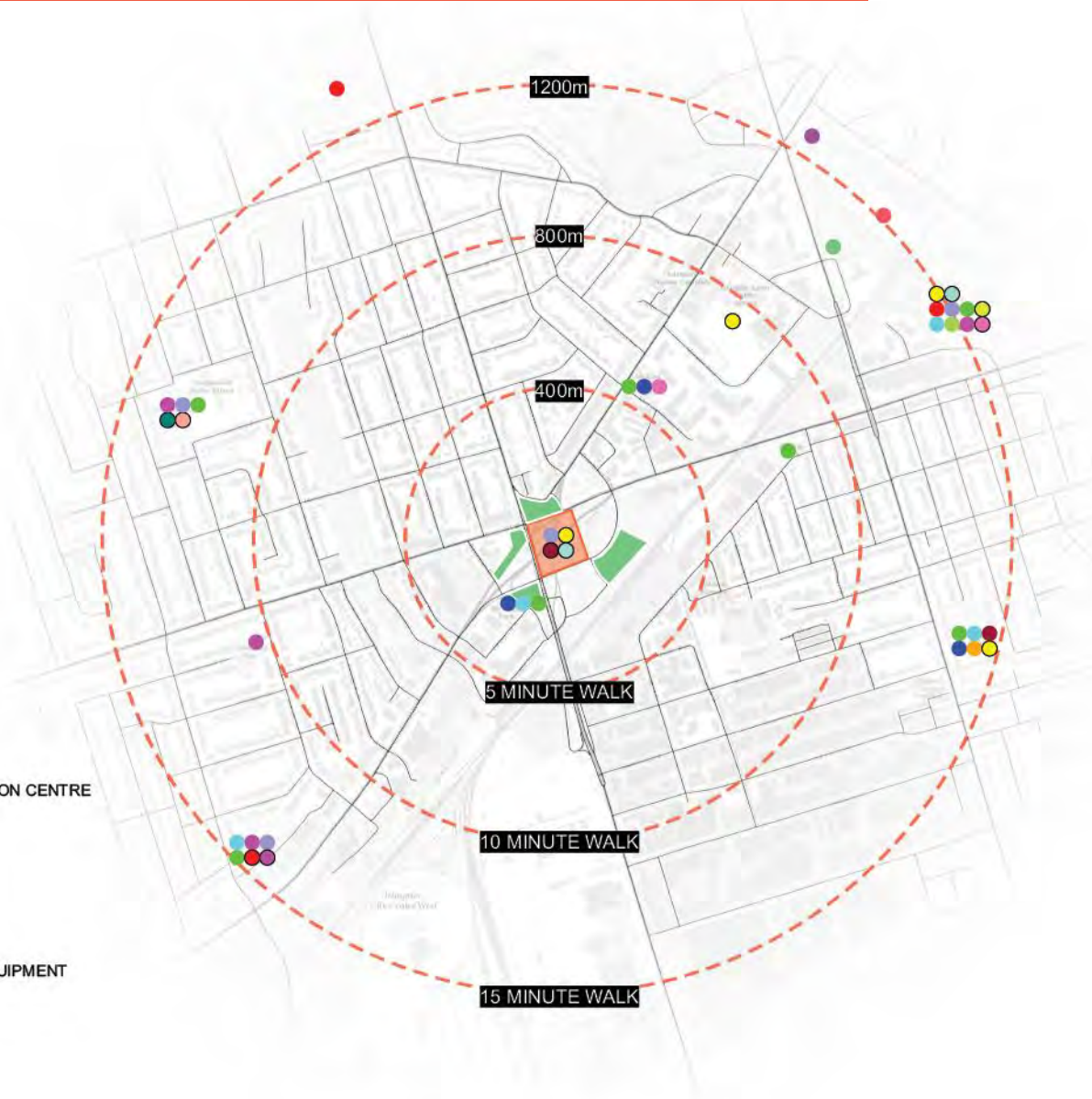
- CHILDREN'S PLAYGROUND
- DRINKING FOUNTAIN
- SPLASHPAD
- PARKING LOT
- COMMUNITY RECREATION CENTRE
- GYMNASIUM
- INDOOR POOL

10 MINUTE RADIUS (800m)

- CHILDREN'S PLAYGROUND
- SPLASHPAD
- PICNIC SHELTER
- COMMUNITY RECREATION CENTRE

15 MINUTE RADIUS (1200m)

- OUTDOOR TENNIS COURT
- CHILDREN'S PLAYGROUND
- DRINKING FOUNTAIN
- SPLASHPAD
- BIKE TRAIL
- PARKING LOT
- SHUFFLE BOARD
- MULTI-PURPOSE SPORTS FIELD
- BOWLING GREENS
- COMMUNITY RECREATION CENTRE
- INDOOR POOL
- OUTDOOR POOL
- ICE RINK
- ARENA
- OUTDOOR FITNESS EQUIPMENT
- PICKLEBALL COURT
- BASEBALL DIAMOND



Neighborhood Amenities

Parks & Amenities



Fairfield Park – Splash pad



Clover Park – Playground



Michael Power Park – Pavilion



Reid Manor Park – Treescape



Thomas Riley Park – Ravine



Thomas Riley Park – Playground
note: new playground under construction



Thomas Riley Park – Sports field



Echo Valley Park – Walking path

Draft Guiding Principles & Vision Statement

Draft Guiding Principles

Multi-Generational & Multi-Cultural

- Create park spaces that are intergenerational and inclusive.
- Provide a balance of programming and amenities across the park network that cater to the existing and upcoming neighborhood and people of all demographics.
- Reflect and celebrate the neighborhood's unique character and explore interventions that pay homage to the area's heritage and evolution over time.

Diverse Park Spaces

- Create spaces that accommodate different scales, with different configurations and amenities to accommodate active, passive, and flexible recreation opportunities.
- Incorporate large and small gathering spaces, intimate spaces, and peripheral spaces.

Community

- Create a diversity of park types and community spaces with strong distinctive characteristics appropriate for each parks' unique location within this emerging neighbourhood.
- Incorporate placekeeping elements that recognize and reconnect to the origins of the land and the narratives that honour Indigenous belonging and Indigenous place.
- Ensure the four parks are well-connected to each other and to other green spaces near-by.
- Create a strong network of parks that work together as a whole.

Accessibility, Comfort & Safety

- Prioritize parks that are accessible and comfortable for people of all ages, abilities, and impairment.
- Provide park spaces that feel safe for all people, are well-lit, and well-maintained.
- Provide safe and easy connections to parks that consider existing and planned circulation routes, patterns, and desire lines.
- Buffer park edges that are adjacent to busy roads to improve safety and comfort, enhance park spaces, and mitigate noise from rail and roads.

Integrate Ecology

- Incorporate planting zones that support biodiversity, stormwater management, air pollution, and heat island mitigation.
- Align with Indigenous values by using sustainable practices, native plants, and involving communities in long-term stewardship.
- Introduce trees and planting to provide plenty of shade and to benefit the psychological well-being of individuals.

Draft Vision Statement

The Six Points Park District will serve as an inclusive green haven, capturing the community's essence as a place that honours local heritage, embraces cultural experiences, and fosters collective aspirations for the future. This new park district will be the result of thoughtful collaboration with local community members and careful application of accessibility design standards, and will provide comfortable safe spaces for the community to gather and connect. By incorporating sustainable design and Indigenous placekeeping and placemaking, the Six Points Park District will blossom into a network of vibrant green spaces where diverse groups of all ages can convene, enjoy the outdoors, forge connections, and flourish year-round.

Park Network

Park Network

PARK #4 COMMEMORATIVE PARK

PARK #3 GATEWAY PARK

PARK #1 Neighbourhood Park

An intimate park with an exposed eastern edge, tucked into the established neighbourhood.

PARK #2 Magnet Park

A centrally located destination park facing the new Civic Centre with busy street edges on all four sides can provide a spill-over space from the Civic Centre plaza.

PARK #3 Gateway Park

A connector park that makes links to surrounding nearby communities. (East to Islington BIA, West along Bloor Street, North and South to Wards 2 & 3 respectively). Together the park and Civic Centre define the precinct entry

PARK #4 Commemorative Park

This park commemorates the historic Dundas Street alignment and will include design elements that accentuate movement along the historic path.



District Park Plan



Preliminary Program Options

Park #1: Six Points Park Expansion

Opportunities & Constraints



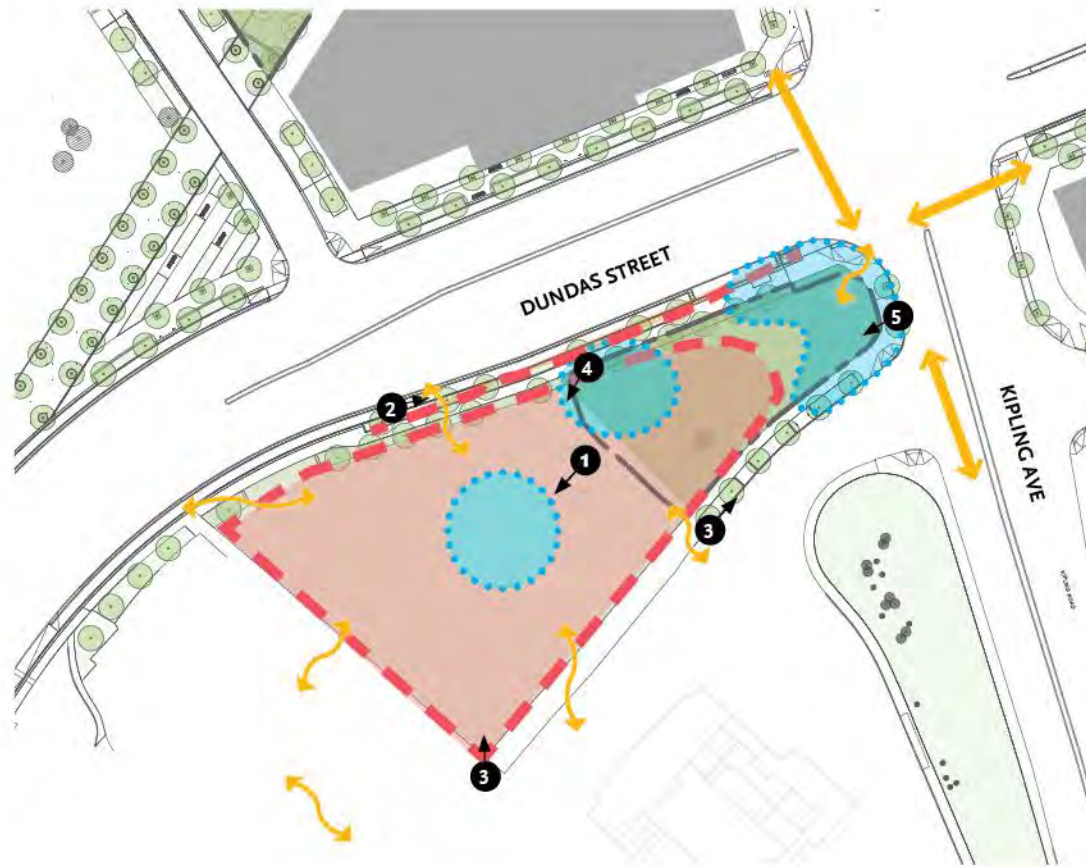
1
Constraint – The Park is currently focused on children’s play, and with limited space available, it will be a challenge to make the expansion area intergenerational.



2
Opportunity – Softened urban edge with streetscape that attracts and navigates people to the site.



3
Opportunity – Protected edges of the park are surrounded by an established neighbourhood.



○ Opportunities
 ○ Constraints
 → Formal Flow
 ~ Filtered Flow
 Drawing Scale: 1:2000



4
Constraint – There is a slope to the site making it a challenge to make the park accessible for all.



5
Constraint – This is an exposed & noisy “peninsula” site with traffic on three sides, including a bus route at the south.

Primary Focus: Neighbourhood Park



PLAY

SPORTS ACTIVITIES
ACTIVE PLAY & RECREATION
ENTERTAINMENT
INTERACTIVE
FITNESS



WALKING
SMALL DOG OFF-LEASH
BASKETBALL HALF-COURT
SKATE SPOT
INTERACTIVE ART

GATHER

SITTING & LOUNGING
CONVERSATIONS
INTERACTIONS
FOOD PRODUCTION



PARK GATEWAY
SEATING
PING-PONG
ART INSTALLATION

NATURE

PROTECTION
WATER MANAGEMENT
BUFFER ZONES
NOISE REDUCTION
EDUCATION & LEARNING



PLANTED AREAS
PLANTING BUFFERS
PLANTED BERMS
SHADE/TREE GROVES
COMMUNITY GARDEN

Drawing Scale: 1:1000

Potential Program & Amenity Options

PLAY



GATHER



NATURE



Preliminary Program Fits: Neighbourhood Park



■ PLAY
 ■ GATHER
 ■ NATURE
 - - - CIRCULATION

MULTI-SPORT COURT 18x30m	SKATE SPOT <math>< 600\text{m}^2</math>	BASKETBALL COURT 15x28m
PLAYGROUND/ NATURE-BASED PLAY 250m ² 450m ²	BASKETBALL HALF COURT 15x14m	OFF-LEASE AREA 250m ² small 500m ² small 1000m ² small
TENNIS/PICKLEBALL 11x23.7m	OUTDOOR FITNESS >210m ²	>2000m ² large

PLANTING AREA (HORTICULTURE AREAS, BUFFERS, PLANTED BERMS, TREE GROVES, COMMUNITY GARDENS)

250m²
 350m²
 1000m²

OPEN MULTIPURPOSE SPACE (PICNIC, INFORMAL PLAYING FIELD, ETC.) 23x14m soccer U6 50x32m soccer U9 2500m ²	SEATING/GATHERING/PLAZA 50m ² 250m ² 500m ² 1000m ²	
	STAGE 15x8m	WASHROOM >50m ²



Drawing Scale: 1:1000

Park #2: Etobicoke Centre Park

Opportunities & Constraints



1 Opportunity – Softened urban edge with streetscape that attracts and navigates people along the edge of the site.



2 Opportunity – Corner oriented towards Etobicoke Civic Centre providing a park gateway opportunity.



3 Opportunity – Gentle slope to the south accommodates active recreation and sports, and orients the site southwards.



4 Constraint – Adjacency to rail tracks creates a higher noise condition at south edge, requiring screening / buffering of sound.

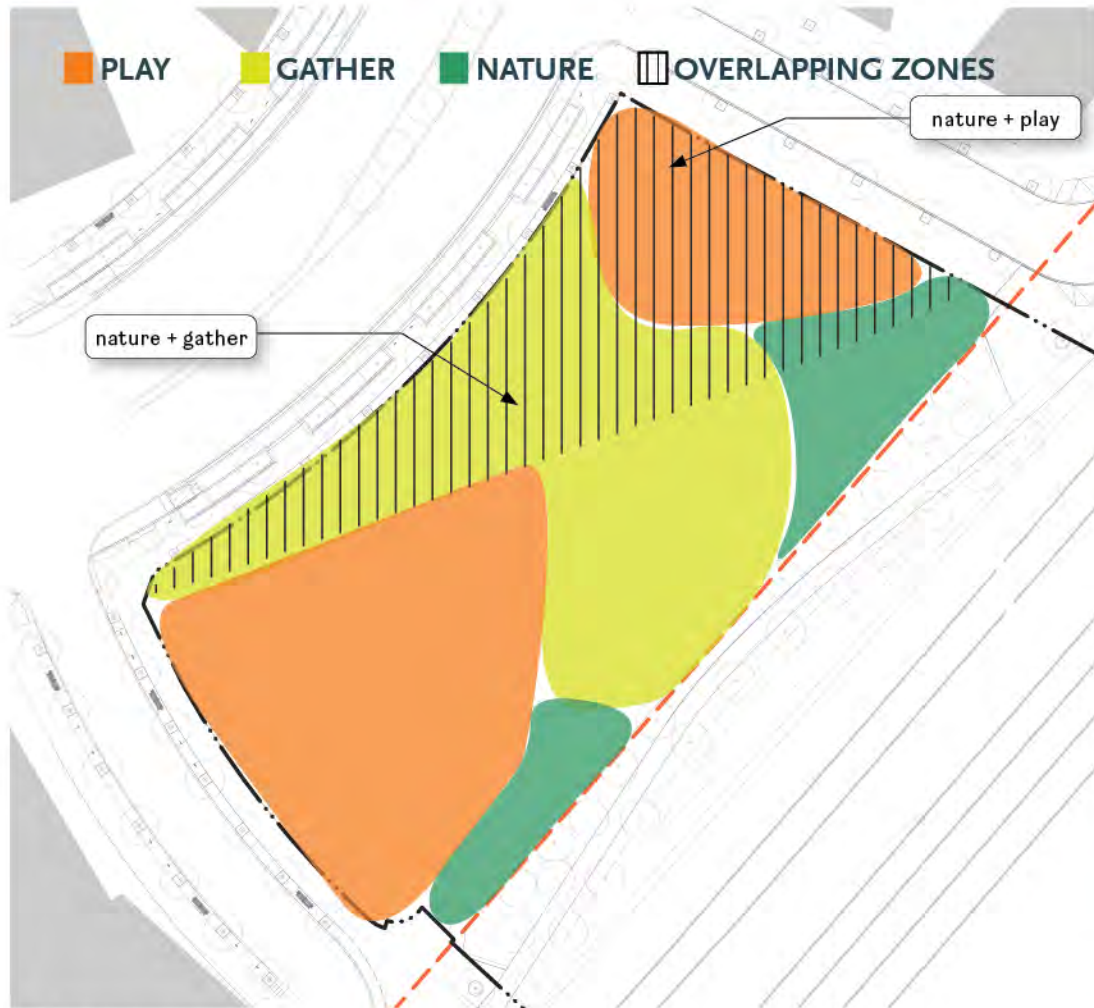


5 Opportunity – Potential future bridge connection at south east corner would connect the site from all four sides.



6 Constraint – Site is exposed and south-sloping and provides plenty of tree shade/shade structure.

Primary Focus: Magnet Park



Drawing Scale: 1:1000

PLAY

SPORTS ACTIVITIES
ACTIVE PLAY & RECREATION
ENTERTAINMENT
INTERACTIVE
FITNESS



PLAYGROUND
OUTDOOR FITNESS
SKATE SPOT
DOG OFF-LEASH
WALKING
INTERACTIVE ART

GATHER

SHOWS & PERFORMANCES
SITTING & LOUNGING
CONVERSATIONS
SOCIAL EVENTS
INTERACTIONS
CASUAL GAMES



PLAZA/SHADE/TREE GROVES
PARK GATEWAY
STAGE / SHADE STRUCTURE
WASHROOMS
SEATING
PICNIC LAWN/PLAY FIELD
PING-PONG
FIRE PIT
ART INSTALLATIONS

NATURE

PROTECTION
WATER MANAGEMENT
BUFFER ZONES
NOISE REDUCTION
EDUCATION & LEARNING
FOOD PRODUCTION



SHADE/TREE GROVES
RAIN GARDEN
COMMUNITY GARDEN
HORTICULTURAL PLANTING
PLANTING BUFFERS

Potential Programs & Amenities

PLAY



GATHER



NATURE



Preliminary Program Fits: Magnet Park



Drawing Scale: 1:1000

<p>MULTI-SPORT COURT 18x34m</p> <p>PLAYGROUND/ NATURE-BASED PLAY 250m² 450m²</p> <p>TENNIS/PICKLEBALL 11x23.7m</p>	<p>SKATE SPOT <600m²</p> <p>BASKETBALL HALF COURT 15x14m</p> <p>OUTDOOR FITNESS >210m²</p>	<p>BASKETBALL COURT 15x28m</p> <p>OFF-LEASE AREA 250m² small 500m² small 1000m² small >2000m² large</p>	<p>PLANTING AREA (HORTICULTURE AREAS, BUFFERS, PLANTED BERMS, TREE GROVES, COMMUNITY GARDENS) 250m² 300m² 1000m²</p>
<p>OPEN MULTIPURPOSE SPACE (PICNIC, INFORMAL PLAYING FIELD, ETC.) 21x14m soccer US 50x32m soccer US 2500m²</p>	<p>SEATING/GATHERING/PLAZA 50m² 250m² 500m² 1000m²</p> <p>STAGE 15x8m</p> <p>WASHROOM >50m²</p>	<p>SMALL AMPHITHEATRE 9.5m dia</p>	

Park #3: Dunkip Park

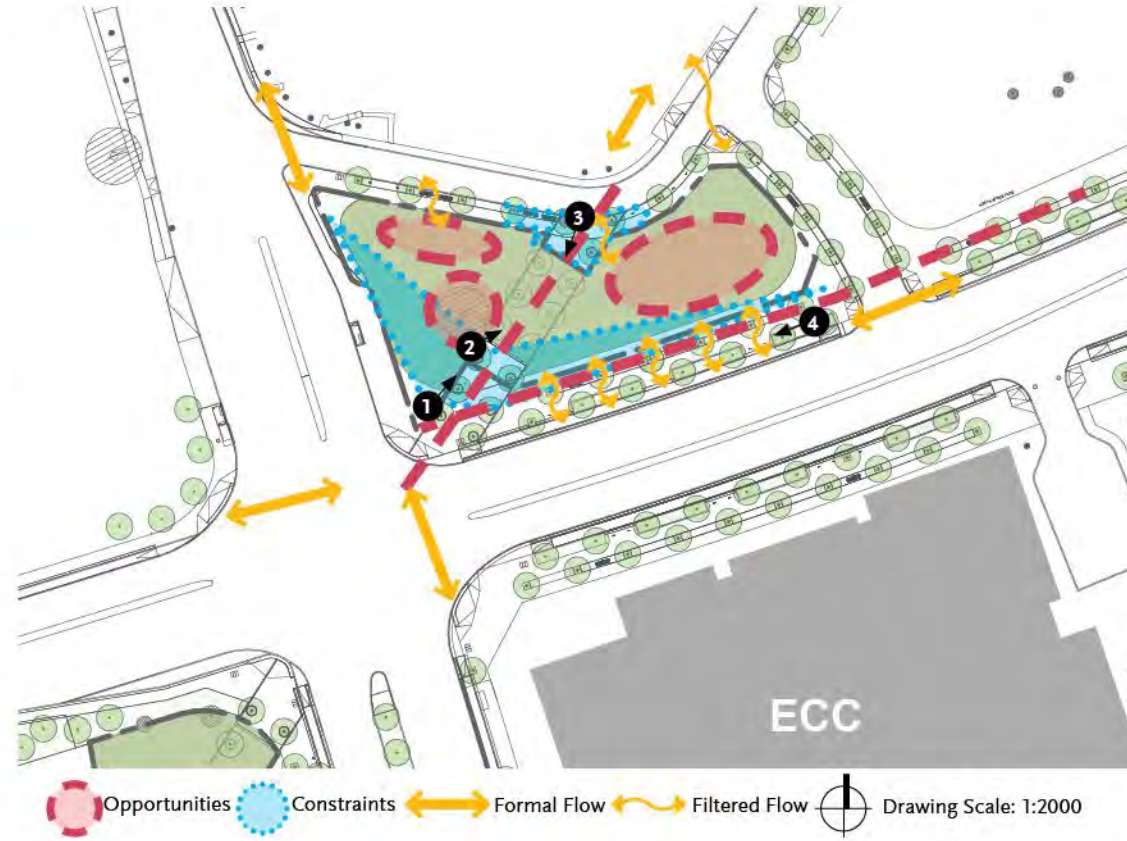
Opportunities & Constraints



1 Opportunity – Commemorative historic Dundas St. entrance to the park creates a path connection opportunity.



2 Opportunity – Mature tree is focal point of site. Gentle slopes to the east and west allow for protected activities on both sides.

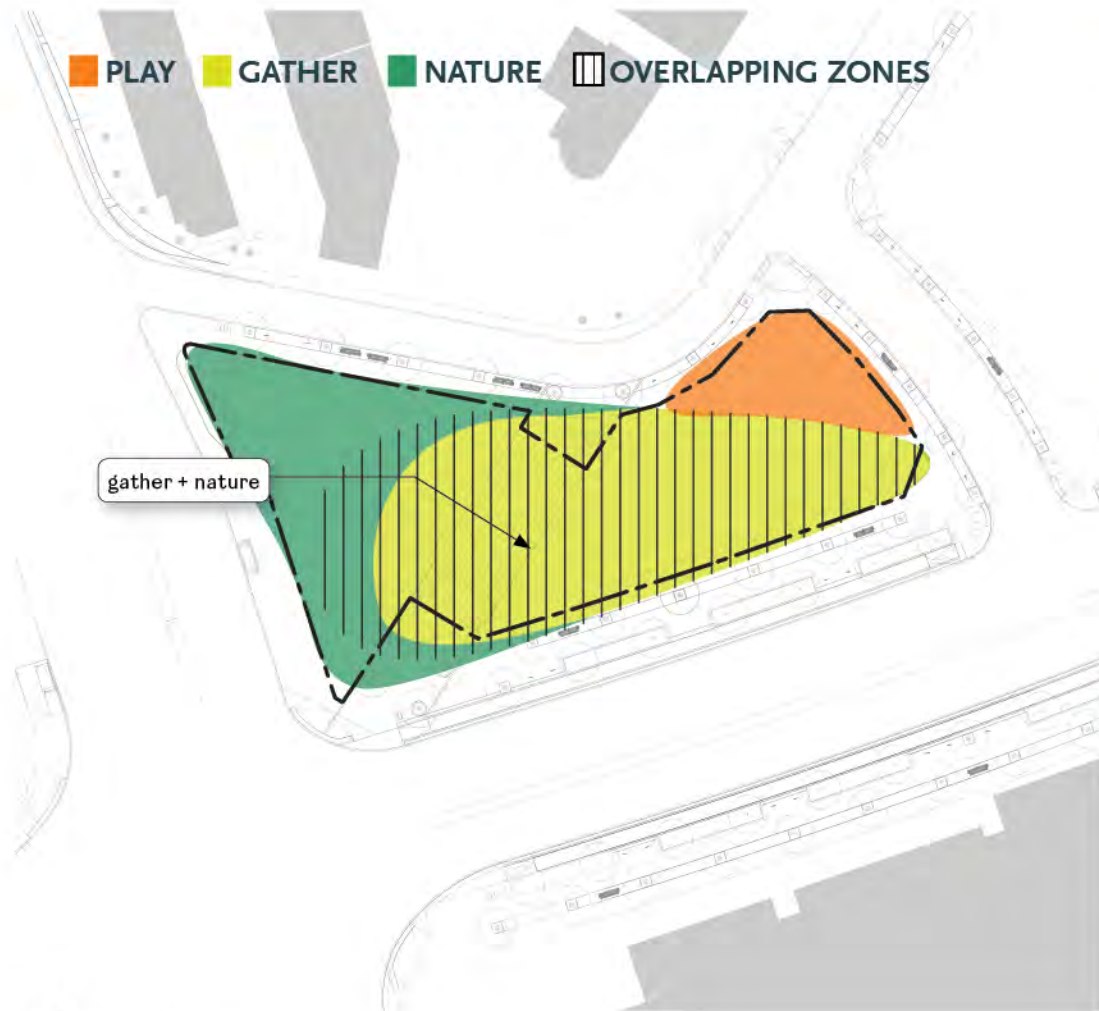


3 Constraint – Exposed park edges need protection from traffic on all sides.



4 Opportunity – Softened urban south edge with streetscape attracts and navigates people to the site from Etobicoke Civic Centre.

Primary Focus: Gateway Park



■ **PLAY**

ACTIVE PLAY & RECREATION
INTERACTIVE
FITNESS



SKATE SPOT
WALKING
INTERACTIVE ART

■ **GATHER**

SITTING & LOUNGING
CONVERSATIONS
INTERACTIONS



PLAZA / TREES
BERMS / MOUNDS / PLANTINGS
HERITAGE INTERPRETATION
SEATING / GATHERING SPACE
SMALL STRUCTURE / SHELTER
PARK GATEWAY
FEATURE BENCH
ART INSTALLATIONS

■ **NATURE**

PROTECTION
WATER MANAGEMENT
BUFFER ZONES
NOISE REDUCTION
EDUCATION & LEARNING



PLANTED AREAS
PLANTING BUFFERS
PLANTED BERMS
SHADE/TREE GROVES



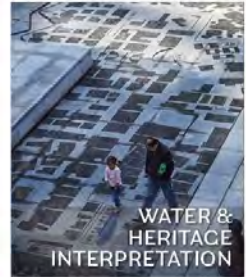
Drawing Scale: 1:1000

Potential Programs & Amenities

PLAY



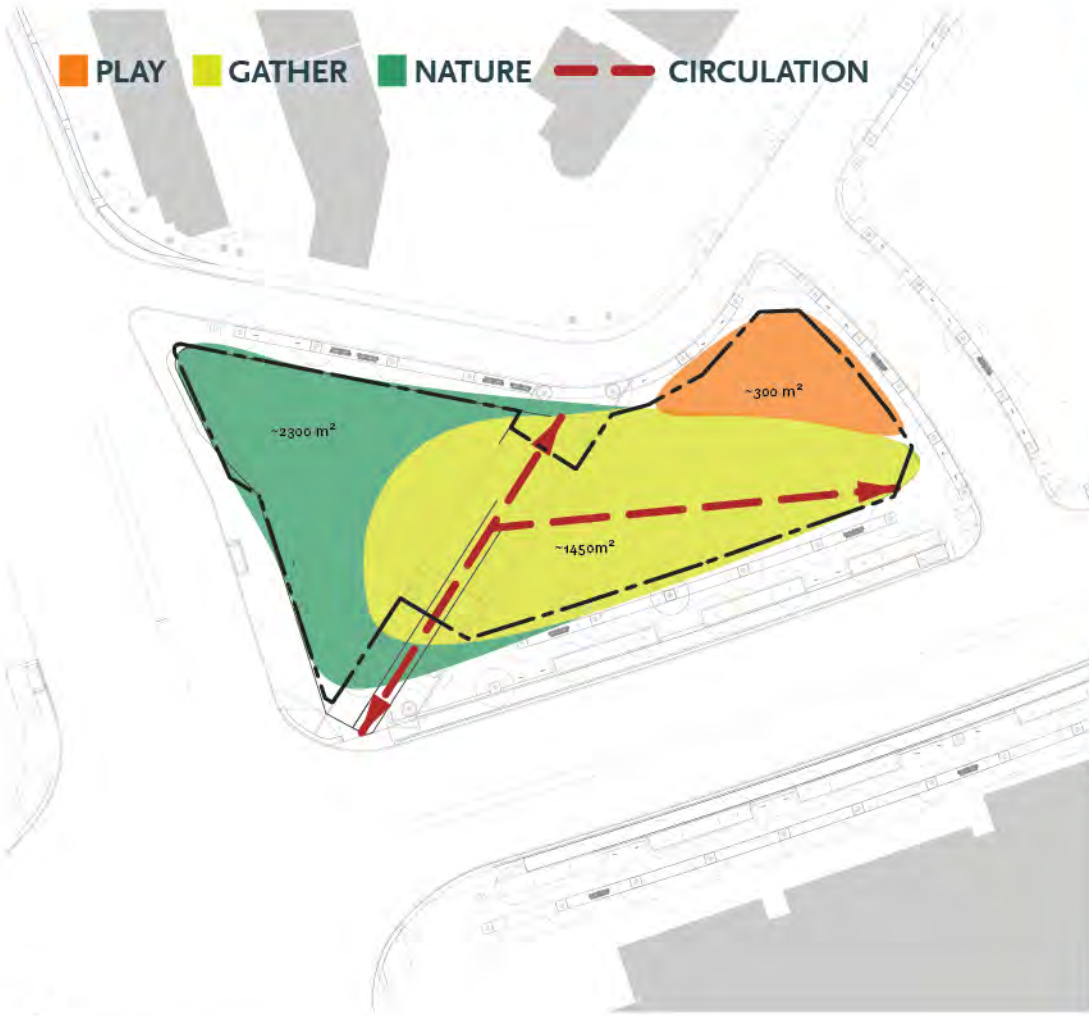
GATHER



NATURE



Preliminary Program Fits: Gateway Park



■ PLAY
 ■ GATHER
 ■ NATURE
 - - - CIRCULATION

MULTI-SPORT COURT 18x36m	SKATE SPOT <600m ²	BASKETBALL COURT 15x28m
PLAYGROUND/ NATURE-BASED PLAY 250m ² 450m ²	BASKETBALL HALF COURT 15x14m	OFF-LEASH AREA 250m ² small 500m ² small 1000m ² small >2000m ² large
TENNIS/PICKLEBALL 11x23.7m	OUTDOOR FITNESS >210m ²	

PLANTING AREA (HORTICULTURE AREAS, BUFFERS, PLANTED BERMS, TREE GROVES, COMMUNITY GARDENS)

- 200m²
- 300m²
- 1000m²

OPEN MULTIPURPOSE SPACE (PICNIC, INFORMAL PLAYING FIELD, ETC.)

- 23x14m soccer U6
- 50x32m soccer U9
- 2500m²

SEATING/GATHERING/PLAZA

- 50m²
- 250m²
- 500m²
- 1000m²

STAGE
15x8m

WASHROOM
>50m²



Drawing Scale: 1:1000

Park #4: Linear Park

Opportunities & Constraints



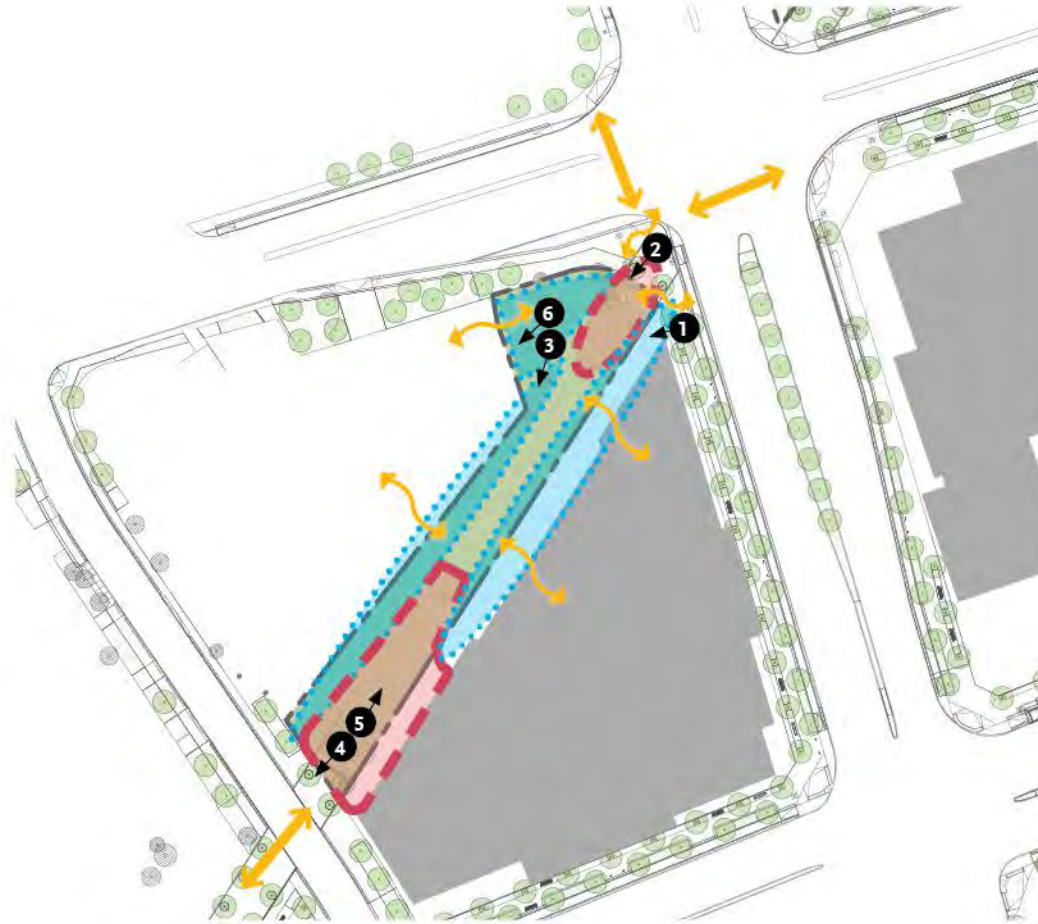
1 Constraint – Steep slope on south east of site requires retaining wall to accommodate some programs.



2 Opportunity – Commemorative historic Dundas St. path through site with gentle slope is also a desire line.



3 Constraint – Tree planting on the north west portion of site limits park to programs which can be accommodated in a narrow or linear way .



4 Opportunity – Commemorative historic Dundas St. entrance to the park creates a path connection opportunity.



5 Opportunity – Gentle slope creates opportunity for more active programs along the path on the south-west section of the site



6 Constraint – Adjacency to parking lot with higher noise condition, requires screening / buffering from noise and for pedestrian safety.

Primary Focus: Commemorative Park



PLAY GATHER NATURE OVERLAPPING ZONES

nature + gather

PLAY

ACTIVE PLAY & RECREATION
INTERACTIVE
FITNESS



OUTDOOR FITNESS
SKATE SPOT
SMALL DOG OFF-LEASH
WALKING & BIKING
INTERACTIVE ART

GATHER

SITTING & LOUNGING
CONVERSATIONS
INTERACTIONS
COMMEMORATION
CASUAL GAMES



TREED PROMENADE
PLAZA / SEATING
SOCIAL / GATHERING SPACES
COMMEMORATIVE FEATURES
HERITAGE INTERPRETATION
CHESS TABLES
PARK GATEWAY
SERIAL ART INSTALLATIONS

NATURE

PROTECTION
WATER MANAGEMENT
BUFFER ZONES
NOISE REDUCTION

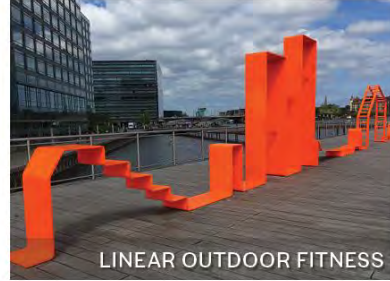


HORTICULTURAL PLANTING
PLANTING BUFFERS
PLANTED BERMS
SHADE/TREE GROVES
TREE-LINED PATH

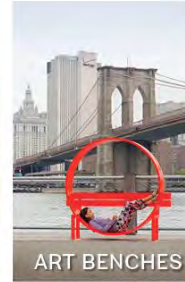
Drawing Scale: 1:1000

Potential Programs & Amenities

PLAY



GATHER



NATURE



Preliminary Program Fits: Commemorative Park



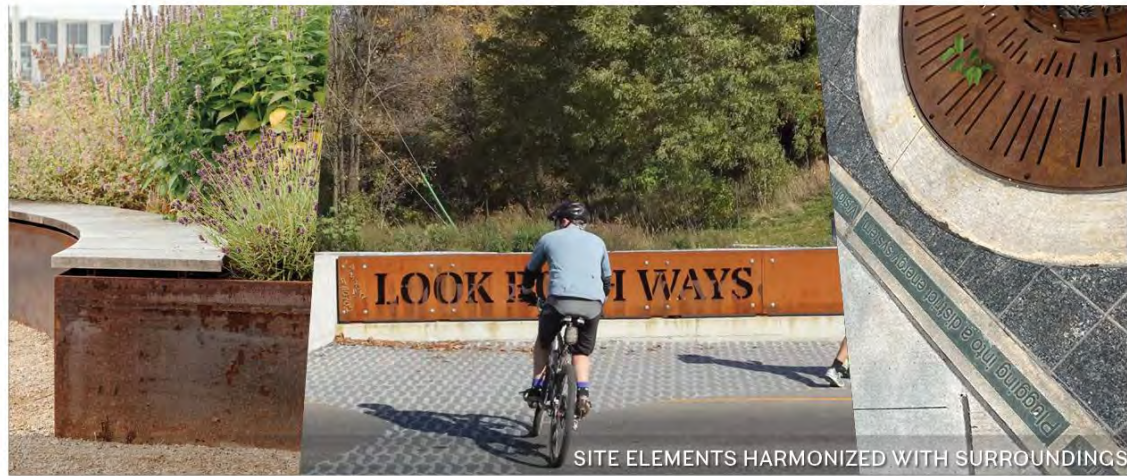
Drawing Scale: 1:1000

<p>MULTI-SPORT COURT</p> <p>18x36m</p>	<p>SKATE SPOT</p> <p><600m²</p>	<p>BASKETBALL COURT</p> <p>15x28m</p>	<p>PLANTING AREA (HORTICULTURE AREAS, BUFFERS, PLANTED BERMS, TREE GROVES, COMMUNITY GARDENS)</p> <p>250m²</p> <p>500m²</p> <p>1000m²</p>
<p>PLAYGROUND/ NATURE-BASED PLAY</p> <p>250m²</p> <p>450m²</p>	<p>BASKETBALL HALF COURT</p> <p>15x14m</p>	<p>OFF-LEASH AREA</p> <p>250m² small</p> <p>500m² small</p> <p>1000m² small</p> <p>>2000m² large</p>	
<p>TENNIS/PICKLEBALL</p> <p>11x23.7m</p>	<p>OUTDOOR FITNESS</p> <p>>210m²</p>		
<p>OPEN MULTIPURPOSE SPACE (PICNIC, INFORMAL PLAYING FIELD, ETC.)</p> <p>23x14m soccer U6</p> <p>50x32m soccer U9</p> <p>2500m²</p>		<p>SEATING/GATHERING/PLAZA</p> <p>50m²</p> <p>250m²</p> <p>500m²</p> <p>1000m²</p>	<p>5.5m dia</p> <p>SMALL AMPHITHEATRE</p>
	<p>STAGE</p> <p>15x8m</p>	<p>WASHROOM</p> <p>>50m²</p>	

Park Character



Park Elements



Final Discussion: Draft Guiding Principles & Vision Statement Round Table Discussion

Draft Guiding Principles

Multi-Generational & Multi-Cultural

- Create park spaces that are intergenerational and inclusive.
- Provide a balance of programming and amenities across the park network that cater to the existing and upcoming neighborhood and people of all demographics.
- Reflect and celebrate the neighborhood's unique character and explore interventions that pay homage to the area's heritage and evolution over time.

Diverse Park Spaces

- Create spaces that accommodate different scales, with different configurations and amenities to accommodate active, passive, and flexible recreation opportunities.
- Incorporate large and small gathering spaces, intimate spaces, and peripheral spaces.

Community

- Create a diversity of park types and community spaces with strong distinctive characteristics appropriate for each parks' unique location within this emerging neighbourhood.
- Incorporate placekeeping elements that recognize and reconnect to the origins of the land and the narratives that honour Indigenous belonging and Indigenous place.
- Ensure the four parks are well-connected to each other and to other green spaces near-by.
- Create a strong network of parks that work together as a whole.

Accessibility, Comfort & Safety

- Prioritize parks that are accessible and comfortable for people of all ages, abilities, and impairment.
- Provide park spaces that feel safe for all people, are well-lit, and well-maintained.
- Provide safe and easy connections to parks that consider existing and planned circulation routes, patterns, and desire lines.
- Buffer park edges that are adjacent to busy roads to improve safety and comfort, enhance park spaces, and mitigate noise from rail and roads.

Integrate Ecology

- Incorporate planting zones that support biodiversity, stormwater management, air pollution, and heat island mitigation.
- Align with Indigenous values by using sustainable practices, native plants, and involving communities in long-term stewardship.
- Introduce trees and planting to provide plenty of shade and to benefit the psychological well-being of individuals.

The Six Points Park District will serve as an inclusive green haven, capturing the community's essence as a place that honours local heritage, embraces cultural experiences, and fosters collective aspirations for the future. This new park district will be the result of thoughtful collaboration with local community members and careful application of accessibility design standards, and will provide comfortable safe spaces for the community to gather and connect. By incorporating sustainable design and Indigenous placekeeping and placemaking, the Six Points Park District will blossom into a network of vibrant green spaces where diverse groups of all ages can convene, enjoy the outdoors, forge connections, and flourish year-round.

Final Discussion: Preliminary Programming Options & Open Discussion

Next Steps

- Please send additional ideas, comments, or suggestions to Elijah.Bawuah@Toronto.ca
- Staff will compile a written summary of the meeting. A draft will be shared with CAC members once ready, and the final version will be post on the project website.

Thank you!