

Wabash Community Recreation Centre

Phase C: Setting the Direction Summary Report

October 2023

Alex Lavasidis, Senior Public Consultation Coordinator
Ashley Wilson, Senior Project Coordinator



Contents

Contents	1
Introduction	2
Engagement Process Overview.....	3
Community Engagement Phase A: Building a Vision.....	3
Community Engagement Phase B: Exploring Design Options.....	6
Community Engagement Phase C: Setting the Direction.....	7
How We Reached People in Phase C.....	8
What We Heard	9
Overall Summary	9
Pop-Ups Summary	12
Virtual Public Meeting	15
Online Survey Summary	18
Next Steps	36
Appendix A: Pop-Up Boards and Dot Vote Results	37
Appendix B: Public Meeting Agenda.....	44
Appendix C: Raw Survey Responses	45

Introduction

The design of the new Wabash Community Recreation Centre (CRC) builds on 20 years of planning and consultation work by both City staff and the local community, which has played a strong role in driving this project forward. The City first identified the Wabash site in a 1999 report as one of five historically under-served areas. The site, including the former Canadian Linseed Oil Mill factory, was purchased by the City in 2000 in order to develop a community recreation centre. Thanks to the advocacy and fundraising efforts by Friends of Sorauren Park and the local community, several improvements were made to the site, including renovations to the Fieldhouse in 2008, and the construction of the Town Square in 2014.

The City's new 20-year Parks and Recreation Facilities Master Plan again identified the community recreation centre project as a priority for the City, this time specifying that it should include an indoor pool, gymnasium, flexible multi-purpose program spaces.

This document provides an engagement process overview, followed by a summary of the feedback collected through this final phase of community engagement. Phase C of the community engagement process included an online survey, virtual public meeting, and community pop-ups.

Consultation with Indigenous community members is ongoing and a separate summary of feedback from Indigenous community members will be compiled.

Engagement Process Overview

Community Engagement Phase A: Building a Vision

Part 1

This phase of engagement took place in July 2018. The goal of this phase was to re-introduce the project and collect feedback and initial ideas on potential facility programs and features.

Engagement events included:

- Public Meeting: July 10, 2018

Part 2

This phase of engagement took place from August to October 2020. The goal of this phase was to confirm the vision, design principles, and “Big Moves” (key goals) for the design.

Engagement events included:

- Key Informant Interviews with Community Stakeholders: August –October 2020
 - 14 conversations
- Community Resource Group Meeting 1: September 16, 2020
- Virtual Public Townhall (Public Meeting 1): September 22, 2020
 - 30 Participants
- Virtual Public Small Group Discussions (Public Meeting 2): September 28, 2020
 - 18 Participants
- Public Online Survey 1 (or mail-in): September 15 to October 5, 2020
 - 251 Surveys / 465 Participants

Based on the feedback collected in Community Engagement Phase 1: Part 2, the following vision statement, design principles, and “Big Moves” were confirmed:

Vision Statement:

The Wabash Community Recreation Centre will be a space where all community members, regardless of income, race, gender, ability, age, culture, housing status, religion, or spoken language can come together, feel welcome, feel belonging, and participate in recreation and community-building activities. The social and community-building activities of both the Town Square and Field House are fundamental to the success of the new Centre and any physical changes to these features will continue to support these activities. The Centre will be physically accessible to all and prioritize environmentally sustainable design by targeting Net-Zero emissions and energy use. The design will recognize the site’s history, from the historic and enduring presence of Indigenous Peoples on the land to the recent industrial history. Multi-season use, multi-functionality, and integration between indoor and outdoor spaces will be considered throughout the design to ensure community members have access to flexible and functional spaces they can use for a wide range of activities throughout the year, and as the needs of the community change over time.

Design Principles:

1. Physically design spaces to support equitable access for all people, regardless of income, race, gender, ability, age, culture, housing status, religion or spoken language, and to ensure all feel welcome, a sense of belonging and do not experience barriers to participation or access.
2. Recognize the site's history and preserve elements of built and cultural heritage. Research and recognize Indigenous presence on the land; consult with Indigenous Peoples on how this is best accomplished. Collaborate with Heritage Preservation Services to retain and restore the chimney and principle facades and any significant heritage elements of the Linseed Oil Factory as required.
3. Incorporate ambitious Net-Zero emissions (energy) goals and environmentally-progressive design and processes throughout the construction and operations of the new Centre.
4. Support the community-building activities that the Town Square and Fieldhouse provide, while allowing for physical changes to both.
5. Incorporate community meeting spaces and the ability to host arts-based uses into multipurpose and outdoor spaces whenever possible.
6. Design to encourage access through active transportation and transit and providing a limited amount of parking as the site allows.
7. Ensure integration between the building and the park. Provide integration between indoor and outdoor spaces throughout the year, as weather permits.
8. Design for the future by building for the recreation needs of a growing and changing community through flexible spaces, integration with future community assets (e.g., connection to the West Toronto Rail Path), climate resilience, advances in technology and emergency-preparedness.

Big Moves:

1. Provide the full community recreation centre program as mandated by Council (indoor pools, gym and multi-purpose spaces), requiring an addition to the existing Linseed Oil Factory.
2. Connect the recreation centre to the larger site and park by providing integration between indoor and outdoor spaces to support recreation and community activities throughout the year, as weather permits.
3. Design to maintain and support the social and community-building activities of existing public spaces.
4. Collaborate with Toronto Heritage Preservation Services to retain and restore the chimney and principle facades and any significant heritage elements of the Linseed Oil Factory as required.
5. Build a targeted Net Zero Emissions/ (Energy) Building.

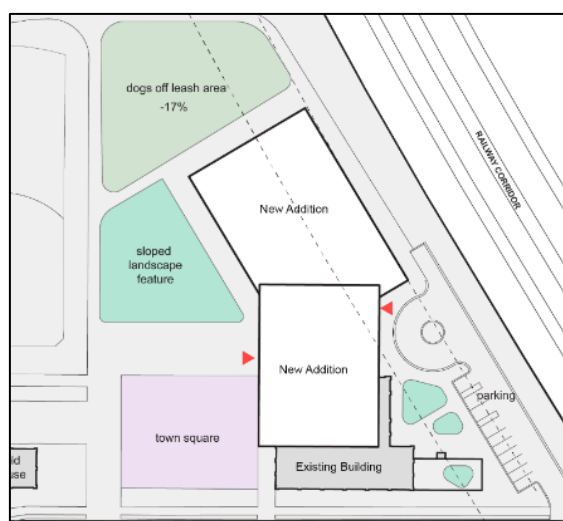
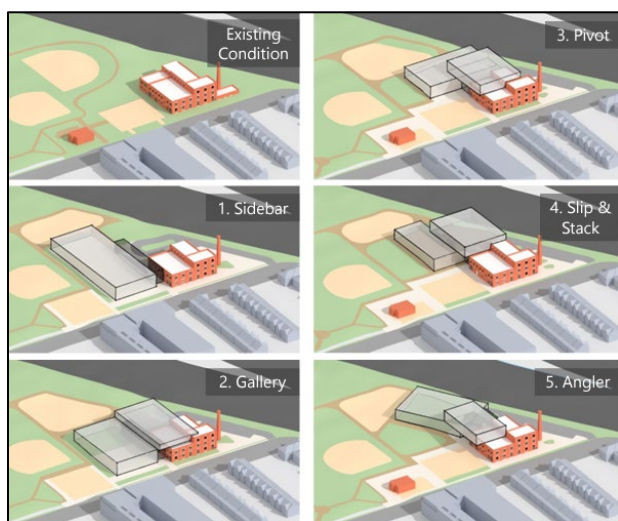
Part 3

This phase of engagement took place from April to August 2021. The goal of this phase was to present and seek community feedback on multiple site design options.

Engagement events included:

- Community Resource Group Meeting 2: April 27, 2021
- Toronto Aboriginal Support Services Council (TASSC) Friends and Partners Sharing Circle: April 2021
 - Note: TASSC includes multiple service providers and organisations.
- Virtual Public Townhall (Public Meeting 3): May 11, 2021
 - 187 Participants
- Public Online Survey 2 (or mail-in): May 5 to 31, 2021
 - 1,175 responses
- Local Indigenous Advisory Circle Meeting 1: May 27, 2021
 - Attending: multiple representatives from Rights Holders Mississaugas of the Credit First Nation, a local Indigenous artist, and a local Indigenous community member/ service provider.
- Local Youth Engagement Workshops: June 2021
 - Two local grade 8 classrooms
- Indigenous Youth Engagement - ENAGB Youth Board Members: June 2021
- Community Resource Group Meeting 3: June 8, 2021
- Local Indigenous Advisory Circle Meeting 2: August 18, 2021
 - Attending: Multiple representatives from Rights Holders Mississaugas of the Credit First Nation, regrets and email communications from local Indigenous Artist.

Through this community engagement, of the five site design options presented, the most support was expressed for the Angler option.



Community Engagement Phase B: Exploring Design Options

This phase of engagement took place from October 2021 to November 2022. The goal of this phase was to present and seek community feedback on a draft design for the new centre and landscape.

Engagement events included:

- Community Resource Group Meeting 4: October 14, 2021
- Local Indigenous Advisory Circle Meeting 3: October 20, 2021
 - Attending: Multiple representatives from Rights Holders Mississaugas of the Credit First Nation (MCFN), regrets from local Indigenous Artist.
- Virtual Public Meeting (Public Meeting 4): November 3, 2021
 - 100+ attendees
- Public Online Survey 3 (or mail-in): November 3 to 17, 2021
 - 670 responses
- Local Youth Engagement Workshops: November to December 2021
 - Parkdale Youth Group and two local grade 9 classrooms
- Community Resource Group Meeting 5: March 2, 2022.
- Meeting with TASSC Friends and Partners Sharing Circle: October 20, 2022
 - Note: TASSC suggested reaching out directly to local community members, which helped informed the approach for the current phase of engagement.
- Meeting with the Mississaugas of the Credit First Nation Culture and Design Advisory Committee (CDAC): November 11, 2022



Community Engagement Phase C: Setting the Direction

This phase of engagement took place from May 2023 to July 2023 and is **the focus of this summary document**. The goal of this phase was to present and seek community feedback on the preferred final design.

Engagement events included:

- Community Resource Group Meeting 6: May 11, 2023
 - Community Resource Group Meeting 7 (*Landscape Focus*): June 8, 2023
 - Community Resource Group Meeting 8 (*Building Focus*): June 14, 2023
- Please note that Community Resource Group Meetings are summarized in a separate document, available on the project webpage.*
- Park Popups: 100+ participants
 - Farmers Market: Monday June 19, 2023, from 3 to 7 p.m.
 - In Sorauren Park: Wednesday June 28, 2023, from 4 to 8 p.m.
- Virtual Public Meeting: July 5, 2023, from 6:30 to 8:30 p.m.
 - 18 participants
- Public Online Survey 4 (or mail-in): June 7 to July 9, 2023
 - 350+ responses
 - Seven responses from members of Indigenous communities (*survey branching included Placekeeping questions for Indigenous community members only*)

How We Reached People in Phase C

In Phase C, the community was informed of engagement activities as listed below:

Print Media

Site Signage

Eleven large signs were placed near the future CRC in Sorauren Park, and in nearby public parks within the future CRC catchment zone. The location of the signs included:

- In Sorauren Park (6):
 - OLA fence (1)
 - Tennis court fence (1)
 - By the park sign (1)
 - Field house (1)
 - Hoarding around the factory building (2)
- Charles G Williams Park (1)
- Columbus Parkette (1)
- West Lodge Park (1)
- MacGregor Playground (1)
- Dundas St Clarens Parkette (1)

Flyer Drop

The local Councillor's office coordinated a flyer drop in June, approximately 1 km around the site of the new CRC to promote engagement opportunities.

Digital Media

Project Webpage

A [project webpage](#) hosts up to date information regarding the project, including how to participate and a sign-up button for e-updates.

E-Updates and E-Flyer

Email updates including a digital flyer with Phase C community engagement opportunities were distributed to the following groups for information, and further distribution.

- The project listserv (public signup on the project webpage)
- Community Resource Group Members
- Local schools and library branches
- The local Councillor's Office (and networks)
- Local Indigenous-serving organisations
- Ambe Maamowisda Employee Circle (City of Toronto Indigenous Staff Network)
- Toronto Aboriginal Support Services listserv
- City of Toronto Indigenous Affairs Office listserv

Social Media and Digital Ads

The City of Toronto used its Facebook and Instagram accounts to promote the virtual community meeting and online survey through paid advertisements and organic posts from June 8 to July 4, targeting a 1.5 km range around the new CRC.

What We Heard

Overall Summary

The majority of community members who participated in the phase C engagement process are satisfied with the proposed designs for the new Wabash Community Recreation Centre as they were presented. The following provides a high-level summary of key considerations collected from community members in Phase C through an online survey, virtual public design workshop, and community pop-ups.

More detailed summaries from each engagement event are available further in this document. Engagement with Indigenous community members is still ongoing through the summer and into fall 2023 and will be summarised in a separate document.

Accessibility Considerations:

Outdoor:

- Concern the decorative paving in the social seating area is a tripping hazard and hard to traverse with a stroller
- Add more accessible parking and provide rain cover over accessible pick-up drop-off or parking spaces
- Ensure the OLA is accessible for people using mobility devices (e.g., scooters and wheelchairs)
- Ensure under-bench lighting is not bright enough to reduce contrast visibility

Indoor:

- Provide more universal change rooms with showers. There is concern that a lack of private shower stalls will result in people without accessibility needs using the universal washroom with private shower, leaving those with accessibility needs waiting in long lines
- For the indoor track, ensure standard height and design for railings to allow persons with mobility challenges to hold onto something for rehab and as required (e.g., York Recreation Centre)
- In the conditioning room, include railings for accessibility and to support physical rehab activities
- Ensure a room can be programmed as a multi-faith room as required (e.g. for prayer, which requires layout considerations)

Other Building Considerations

- There is some desire for a weight room with weights, cardio equipment, etc.
- Change rooms and washrooms:
 - Provide more change rooms and washrooms throughout the building (including gendered and non-gendered facilities)
 - Include change rooms and washroom doors that are floor to ceiling height
 - Provide family change rooms with change tables
 - Provide plentiful hooks throughout the changeroom space and on pool deck
 - Include hairdryers at various heights
 - Ensure outdoor-access washrooms have long hours and are located on the park side to improve safety

- Showers:
 - Provide more private shower stalls, so people can shower without bathing suits (including those using the facility for non-swimming recreation activities)
 - Provide privacy barriers between showerheads to provide some privacy
- Pool: Provide more play elements in the leisure pool
- Gym and track:
 - Include Pickleball lines in the gymnasium
 - Provide clarity on whether the locker room will be gendered, and if not, how it is meant to function
 - Bank the indoor track corners
- Other:
 - Include serving windows from the kitchen, towards the lobby and town square
 - Provide moveable stage risers for performing arts uses
 - On rooftops, add more shade (e.g., structure, retractable canopy, or plantings)

Other Landscape Considerations

- **Town Square and shade tree grove:**
 - Provide seating with backrests to improve comfort and accessibility
 - Picnic tables are the most supported seating option for the south end of the town square
 - Ensure the Town Square has the features to required to support the existing community uses of the space (e.g. tie downs for movie screen; electrical bollard; ability to shut lights off for movie night; water access)
 - Consider moving the shade tree grove further south in the Town Square to make more room for activity
 - Add more trees and plantings to the grove
 - Consider moveable picnic tables instead of a harvest table
 - Ensure the harvest table location does not block access to the fieldhouse.
 - Provide moveable seating so there is more flexibility of use (e.g. moveable chairs, tables, picnic benches)
 - Keep as many existing trees as possible
 - Keep the existing commemorative benches
- **Skate Dot:**
 - Move the skate dot to a less busy area to avoid use conflicts
- **Off Leash Area (OLA):**
 - Increase the OLA size and/or provide a separate OLA for small dogs
 - Place the OLA entrance away from the seating area, to prevent conflict between children/families and dogs
 - Include water fountain inside the OLA so dogs do not have to go in and out of the OLA
 - Add more shade and a second entrance
- **Social Seating Area:** Provide seating with backrests to improve comfort and accessibility
- **Reading Room:** Concern that the reading room blocks visibility to the western entrance, creating a safety risk
- **Bike Parking:** Add more secure bike parking, including space for cargo bikes, kids bikes, and e-bikes, and use bike parking facilities denser than post and ring (e.g. racks)

- **Lighting:** Consider adding more lighting (while being mindful of light pollution) in the following locations:
 - The north, east, and west sides of the building
 - Inside and around the OLA (including specialty lighting)
 - Near bike parking
 - Baseball diamond
 - For the natural winter rink
- **Storage:** Ensure there is storage space to support community-led activities (e.g. how the shipping container and fieldhouse have provided this support).

Traffic Concerns

- Install speed reduction measures to keep streets safe (especially on Wabash Ave, along Macdonell Ave, and their intersection)
- Ensure on-street parking pressures do not push out residents
- Design the pick-up drop-off so it is visible and safe
- Ensure full pedestrian and cycling connectivity to the site (e.g. no dead-end sidewalk on Macdonell)

Placekeeping

- Placekeeping designs are on the right track but more engagement with members of Indigenous communities is needed.

Pop-Ups Summary

Overview

100+
Community
Members
Engaged

2
Pop-ups

Pop-ups included large project information boards with questions to collect feedback on the proposed designs, similar to the online survey. Boards included labelled images depicting the preferred designs for the landscape (Off-leash area, social seating area, sloped lawn, Town Square, street frontage, reading room, and pick-up/drop-off and parking area) as well as the façade and each floor of the CRC building. Multiple staff members were present at both pop-ups to discuss the designs and gather feedback.

Pop-ups included:

- Sorauren Park Farmers Market: Monday June 19, 2023, 3 to 7 p.m.
- In Sorauren Park (beside the Tennis Courts): Wednesday June 28, 2023, from 4 to 8 p.m.

Feedback

The majority of pop-up participants were interested in hearing an overview of the preferred designs and provided no suggested changes or comments. Some shared that they are excited about the designs and are looking forward to using the new centre. Others left suggestions, as summarized below, organized by area of the design. As only about 3 people participated in the dot-voting activity, these results are included in Appendix A along with images of the pop-up boards.

Overall

- Building, add:
 - Weight room (8) with weights, treadmills etc.
 - "There are no affordable options in the neighbourhood."
 - Include squash courts (4)
 - An opposing opinion was also shared: Do not include squash courts, as not enough people use them to take up a full-time dedicated space (1)
 - Music rehearsal rooms (soundproofed, can be small) (1)
 - Media lab for filming, recording, podcasting etc. (include audio equipment, green screen, etc.) (1)
 - Indoor pickleball (1)
 - Podcast lounge room (1)
 - Ensure there is a multipurpose room that can be programmed as a multi-faith room as required. This requires special considerations for how the room is laid out and its features (1)
 - A shared community agreement sign (that can be voted on by community) at the entrance to ensure there are shared safe space ideas and expectations in the first place (1)
 - Brick on the façade instead of fins, and use film over glass to reduce solar glare into the centre (1)

- Through landscaping, add:
 - Community garden/allotment garden (1)
 - Outdoor pickleball (1)
 - More grass, more mess, less paving, more life (1)
- Include specific programming:
 - Mindfulness/healing workshops (1)
 - Aquafit for seniors (1)
 - Intentional programming representing and including marginalized identities throughout the year (1)
- Sustainability:
 - Use a more cost-efficient design/choices (1)
 - Attain LEED certified platinum (1)
- Can't do everything or will end up with a building and no park (1)
- Don't build, keep the park as is (1)
- Dislike the massing choice. Building should have been over town square and not into the park. It looks like a correctional centre – an eyesore out of context with the area and city that destroys the view plane and greenspace, and it is too expensive (twice as much as it should be) (1)

Ground Floor

- Include a:
 - Café (4), with access to Town Square (1)
 - Climbing wall in lobby (2)
 - Commercial kitchen to allow people to make and sell goods at the market (1)
- Move lobby lounge space closer to the town square or street (1)

Third Floor

- In the Gym, include:
 - Lines for pickleball (4)
 - Adjustable basketball net heights for kids (1)
- On the rooftops, include:
 - Bouldering as a fitness feature (actual granite stone) (1)
 - Programming related to the rooftop plantings and gardens (1)
 - A greenhouse (1)
 - Growing vegetables (1)

Fourth Floor

- On the track include a rubber surface (1)

Parking, Pick-Up and Drop-Off Area

- There are parking and traffic concerns for street permit holders and visitors. Talk to transportation services to see if there is a way to improve parking, as the neighbourhood is already lacking parking during existing park events. Demand on parking in the neighbourhood will only be exacerbated with the new CRC (2)
- Provide more covered bike parking (2)
- Do not provide parking (1)

Lighting

- Use warm lights (2)

Town Square and Sloped Lawn:

- Seating:
 - Dislike circular seating because no backs. This style is unused in other parks (1)
 - Ensure seating can be moved (1)
 - Include moveable table and chairs, these help create a flexible and thereby a more inclusive space, especially for people of colour (1)
 - Dislike the feature seating, instead have the grass front right onto the square (1)
- Do not increase the square size and maintain flexible grassy spaces instead (1)
- In the south side of the square, keep the existing grassy patches that are used for yoga and, strollers, and programming (1)
- Provide AV integration outdoors including outdoor speakers, a screen built into the building façade, and other built-in features, so that community groups do not need to use inflatable screens and bring in their own equipment (1)

Off-Leash Area

- Provide a separate small-dog off-leash area (7)
 - Small dogs can't use the large dog area, many fights, is unsafe (3)
 - Include artificial turf (2), real grass (1) or woodchips (1)
 - If one is not provided, small dog owners will continue to let their dogs off-leash in non-designated areas because the singular off-leash area will not be safe for them (2)
- Unhappy the OLA is being reduced in size (5)
 - Many fights happen in the space at its current size (1)
 - No other OLAs in walking distance nearby, so do not reduce the size as this is the only one many seniors can walk to in the area (1)
- Keep OLA entrance separated from seating area (e.g., place on north side) to reduce conflict between dogs and people, especially kids (3)
- Include water fountain inside the OLA so that dogs stay inside the OLA (2)
- Ensure the surface does not get too hot (1)
- Do not include stones or logs – they take up space, won't be used, and are a tripping hazard (1)
- Include seating on the east side, by/under the trees (1)
- Ensure proper drainage, especially so the OLA does not smell like urine (1)
- Provide another OLA nearby along the lakeshore (1)

Sacred Fire Ceremonial Space:

- Support this, as long as it is informed by the specific Indigenous and Métis history of the park and neighbourhood (1)
- No solid walls (notion of enclosure around the space) (1)

Virtual Public Meeting

Overview

18

Community
Members
Engaged

On Wednesday, July 5, 2023, 18 people participated in the fifth and final virtual public meeting for the new Wabash Community Recreation Centre (CRC). The project team presented and collected community feedback on the proposed final building and landscape design for the new centre.

The public meeting was held on Zoom with options to join online or call-in. Appendix B includes a meeting agenda.

This summary was written by Third Party Public, third-party facilitation firm retained by the City to help support community engagement for this project.

This summary is not intended to be a verbatim transcript; rather it summarizes key points of discussion shared by participants during the meeting. This summary does not assess the merit or accuracy of any of these perspectives, nor does it indicate an endorsement of any of these perspectives on the part of the City of Toronto.

High Level Summary of Discussion

The following key points provide a high-level summary of the meeting discussion, followed by more detailed feedback.

- **General support for the proposed final design.** Participants expressed excitement for the proposed final design. They said the design is beautiful, ground-breaking and well-considered. They also expressed gratitude to the project team for the hard work put in bringing the design to this stage. Some participants said that they were happy too with the material proposed for the off-leash area.
- **The main concerns flagged were about components of the landscape design, including location of the skate dot, perceived reduction of greenspace, lack of shade on the Town Square, and the off-leash area size.** Participants expressed concerns with the location of the skate dot as it is currently beside the pizza oven, which participants flagged as a high-traffic space. They were also concerned that there seems to be less greenspace than what's currently available around the Town Square, and that the off-leash area is too small. However, another participant noted that focus of the new CRC should be the building, and plans for improving landscaping is only bonus.
- **Questions and suggestions shared related to the landscape design and how to ensure support for existing community activities.** Participants asked questions and shared suggestions focused on the landscape design, including electrical access and screen tie-downs for movie nights, providing more spaces for cargo bikes, providing a railing as support for walking on the sloped lawn, storage space for equipment used for community events, and keeping existing commemorative benches purchased by the community.

Building and Landscape Design Feedback

Participants' feedback on the design is summarized below. Feedback shared by participants appears first, followed by comments/responses provided by the project team or Councillor Perks in *italics*, where provided.

Overall design

- **Support for the design.** Participants said they like the design and appreciated the work done by the team to develop it. They said the design looks lovely, is well-considered, beautiful and ground-breaking.

Landscape design

- **Support for the material used in the off-leash area.** Participants were happy to see the use of mulch-like material instead of sand/gravel in the off-leash area.

Skateboard facilities

- **Concern about the location of the skate dot.** Participants did not like that the skate dot is located beside the pizza oven as it is a high pedestrian traffic area. They suggest moving the skate dot to a more appropriate location, such as the parking lot. Another participant said that the skate dot is not needed because there are skateboard features available at the nearby West Lodge Park.
- **Consider if skateboarding facilities are needed in Sorauren Park since there are existing skateboarding facilities on the nearby West Lodge Park.**

Trees and greenspace

- **Concern about reduced greenspace and shade.** Participants said that there seems to be less green space around the Town Square than what is currently available. They said all the grass under the trees near the Fieldhouse are removed. Participants were concerned that the space would not have enough shade from the sun, which would make it very warm. Participants explained that people visiting the Farmers Market seek out the existing islands of shade. Consider introducing more shade without overly impacting the site lines into Town Square and the outdoor movie night setup. *Thank you for the feedback, we will take it as advice. The design relocates some trees, and increases the tree cover, keeping the area green. Trees are spaced out so they will be able to grow into a healthy size. The design aims to provide shade while at the same time having the flexibility to provide open space to support community activities, like movie nights.*
- **If existing trees are being relocated (like the Princeton Elms along the street), the Friends of Sorauren Park would like to suggest where it could be relocated.**
- **The existing commemorative benches that were purchased by the community and should stay in the park.**

Wabash Avenue and parking

- **Need for more bike parking.** Participants said they would like to have more bike parking included in the design, including space for cargo bikes as there are a lot of cargo bikes in the area.
- **Re-examine Wabash Avenue as it is too wide and it doesn't need more parking.** A participant said that Wabash Avenue is much wider than it needs to be and they would not be in favour of having more parking there. Instead, consider reimagining it and connecting it to the park.

Movie nights

- **Need for electrical access and movie screen tie-downs to support set up for movie nights.** Participants would like to have easy electrical access and tie-downs for the movie screen. Currently, they use existing benches and lamp posts to set up the movie screen. *We will make sure there is sufficient electrical access and make sure there is something that will help with setting up for movie nights.*

Sloped lawn

- **Concern about safe access to the sloped lawn, especially during wintertime.** Participants said the sloped lawn is extremely icy and slippery during winter. They would like to have an alternate path for easy access and railing installed to support walking on the sloped lawn.

Storage space and the Fieldhouse

- **People that animate the park on a volunteer basis needs storage space to support the activities they hold for the community.** A participant had questions about where the shipping container being used for community storage will be relocated. They wanted to know if there will be a permanent location for the shipping container in the future or if community groups hosting community activities be able to use the Fieldhouse for storage. Their preference was to be able to use the Fieldhouse as the shipping container is a band aid solution. *Councillor Perks response: The shipping container and community storage is related to programming. We are still in the design stage and not in the programming stage yet, but we will keep track of the programming ideas and how they will all work together. Project team response: Once we get closer to construction, there will be an opportunity to look into the overall logistics, including the location of the shipping container. There will be many aspects that will need to be taken into consideration related to programming but we are not there yet.*
- **There is currently no programming plan for the Fieldhouse.** The Fieldhouse would provide an excellent community hub for volunteers and this should be planned for.

Off-leash area

- **Concern about the off-leash area being too small.**

Other feedback

- The Friends of Sorauren Park has some ideas for Wabash Avenue that they would like to share with the project team, including improved bike path, textured paving, and crosswalk to the nearby playground. *Wabash Ave is outside the scope of work for this CRC project.*

Online Survey Summary

Overview

350+

Survey
submissions

725+

Participants

An online survey ran from June 7 to July 9, 2023. Respondents were encouraged to complete the survey together with members of their households.

Respondents could review and provide feedback on preferred design for the new centre. Paper copies of the survey were available by request.

This survey summary includes responses from all participants. Raw responses are available in Appendix C.

Placekeeping Feedback

The following is a summary of the feedback collected from members of Indigenous communities about the proposed Indigenous Placekeeping features part of the Wabash CRC design. The survey branched for Indigenous community members, to ask more detailed questions about the proposed Indigenous Placekeeping elements in the designs. In total, seven Indigenous community members responded to the online survey. Engagement with members of Indigenous communities is ongoing through into fall 2023.

Seating

- All respondents are very satisfied or satisfied about the proposed circular wooden bench (for large groups) (7)
- Almost all respondents are very satisfied or satisfied about the stone seating boulders (for small groups) (6)
 - One respondent answered “Neutral/ I don’t know”
- Most respondents felt the right amount of seating was provided (5)
 - One respondent felt there was too much seating, while another suggested adding more seating (up to 5 more spots)
 - A respondent shared that it is “good to have option of how many people can be around the fire”

Shade

- All respondents (7) prefer the mix of pergola and tree cover (as presented in the survey) to provide shade over the wooden bench seating, compared to either trees alone or a pergola alone
 - There were no comments or suggestions about the proposed pergola

Privacy Screening

- Almost all respondents like the proposal to include the artistic privacy screens on the north side of the Sacred Fire ceremonial space (6)
 - One respondent answered “Neutral/ I don’t know”
- Most respondents want the privacy screen art to be created by an Indigenous Artist through an open call for artists (5)
 - One respondent answered “Neutral/ I don’t know”
 - One respondent answered “No” suggesting the call be open to all artists

Plantings

- Most respondents were very satisfied (2) or satisfied (3) with the proposed sloped planting buffer south of the Sacred Fire space.
 - Two respondents answered “Neutral/ I don’t know”

Fire Bowl

- Most respondents support a custom metal fire bowl for the Sacred Fire (5)
 - One respondent answered “Neutral/ I don’t know”
 - One respondent answered “No”
- When asked to rank what materials respondents prefer for the sacred fire bowl, the preference from most preferred to least preferred is:
 - Cast Iron
 - Steel
 - Bronze
 - Concrete

Rainwater Feature

- Most respondents are very satisfied (4) or satisfied (2) with the proposed inclusion of a circular rainwater feature to celebrate and connect the space to water
 - One respondent answered “Neutral/ I don’t know”

Natural Surfacing

- Almost all respondents are very satisfied or satisfied with the proposed wooden bridge/boardwalk connection over the rainwater feature (7)
 - One respondent answered “Neutral”
- All respondents are very satisfied or satisfied with the proposed natural stone (flagstone) around the outside of the gathering circle (7)
- Most respondents are very satisfied or satisfied with the proposed gravel surfacing inside the gathering circle (permeable so rain can flow through into the earth) (4)
 - Three respondents answered “Neutral”

Signage and Interpretive Displays

- Three respondents did not ask for interpretive displays to be displayed in languages other than English and Anishinaabemowin.
- Three respondents answered “Neutral/ I don’t know” regarding the language of interpretive displays.
- One respondent suggested providing the interpretive displays in Mohawk as well.

Overall Feedback

- All respondents are either very satisfied (3) or satisfied (4) with the proposed Sacred Fire ceremonial space design overall.

Placekeeping - Town Square Paving - Proposed Métis Beadwork Design

- Two respondents support the development of a Métis Beadwork Design for the Town Square.
- Two respondents answered “Neutral/ I don’t know”
- Two respondents do not support the development of a Métis Beadwork Design for the Town Square, suggesting instead:

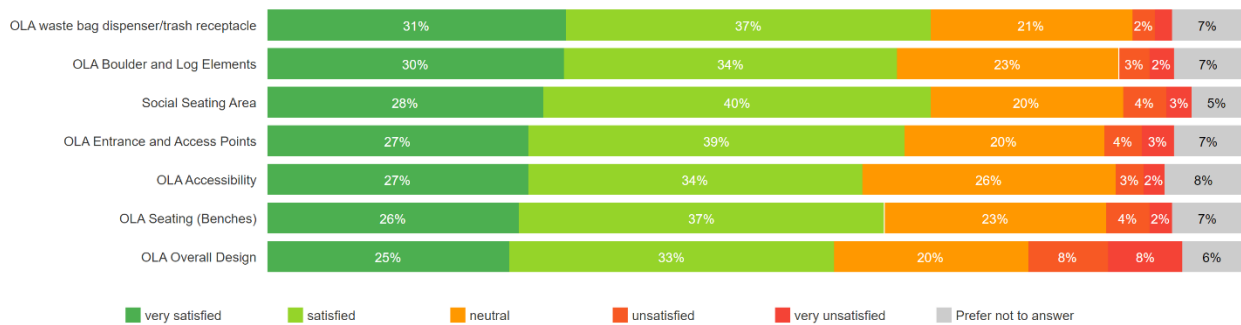
- Anishinaabe and Haudenosaunee art (1)
- Open to all (1)
- One respondent answered “Prefer not to answer”

Landscape Feedback

The following is a summary of feedback collected from all survey respondents.

Northern Landscape Section - Off-Leash Area (OLA) and Social Seating Area

How satisfied are you with the following designs of the north landscape?



N 523

The majority of respondents are satisfied with the overall off-leash area design. A summary of key suggestions or comments about the off-leash area design includes:

- Provide a larger sized OLA, as there is a large dog population in the area (57)
- Provide more shade (28), including natural shade such as trees (15) in the OLA
- Discourage unleashed dogs outside of the OLA (12)
- Provide separate OLAs for small and big dogs (12), as large dogs have been aggressive towards small dogs in the past, and the owners of some small dogs do not feel comfortable to bring them into the existing OLA
- Provide more entrances and pathways (10)
 - This provides a second exit option in the case of dog conflicts in the OLA.
 - Consider relocating the entrance away from the social seating area as all people do not want to interact with dogs and many kids and toddlers will use this seating space (2)
- Change the surface of the OLA (e.g., natural, well-draining surface such as grass)
- Place water station inside the OLA to keep dogs in the OLA (8)
- Reduce the size of or remove the OLA from the park (5)
- Ensure the fence is high enough that dogs cannot jump over it (4)
- Add more seating (3)
- Remove the logs/boulders (3)
- Ensure the space is accessible for people using mobility devices (e.g., scooters and wheelchairs) (2)
- Alternative surfacing suggestions include: grass (2); woodchips (1); dirt (1); natural surface (1).
- Waste bin suggestions include: move the bins away from the seating area so they don't smell. Place by service entrance instead (1); Include two waste bin areas (2); add more

waste bins (2) and make them larger (1); and, place these outside of the access point (1).

- Ensure the location of the OLA is visually separated from the sacred fire space (2); is not in the way of a future West Toronto Rail Path connection (1); is closer to the park entrance so owners do not unleash their dogs through the park (1); away from the social seating area (1).

The majority of respondents are satisfied with the social seating area design. A summary of key suggestions or comments about the social seating area includes:

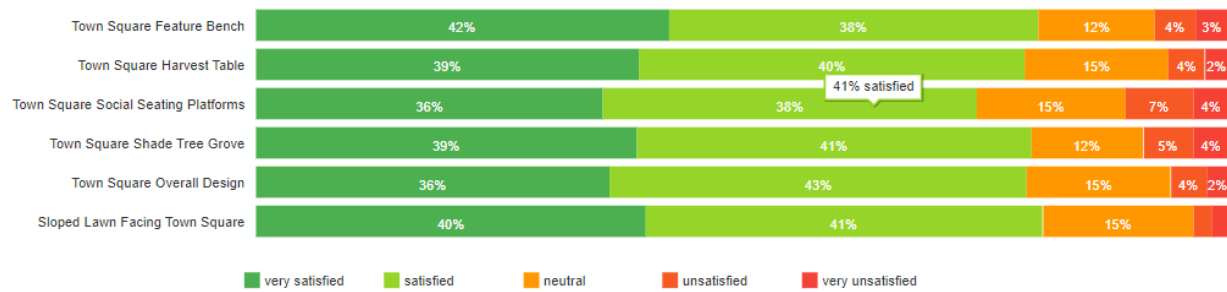
- Add seat backs (9)
- Replace circular seating with other option (6) (e.g., benches, tables, chairs)
- Add more seating (4)
- Add shade (4) (natural or umbrellas)
- Add more planting and trees (3)
- Make the space larger (2)
- Concern the decorative paving is a tripping hazard (1), **hard to traverse with a stroller** (1), and that the gravel will make a mess (1)
- Add public art (1)
- Do not include any hostile seating (1)

Other key suggestions or comments about the northern landscape include:

- Add seating north of the OLA (2) and by the rail corridor (1)
- Add signage to indicate that in the park dogs must be leashed (2)

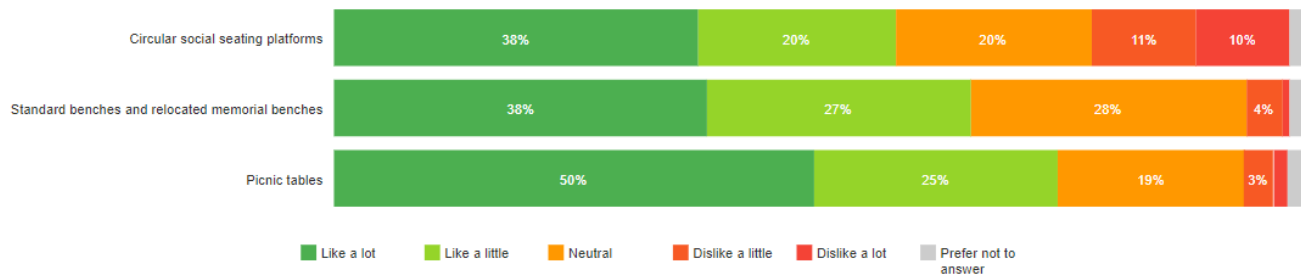
Town Square and Southern Landscape Section

How satisfied are you with the following designs of the south landscape?



Note: A "Prefer not to answer" response options was not provided for this question, in error.

Do you like or dislike the following seating options for the south end of the Town Square, under the shade tree grove?



The majority of respondents are satisfied with the Town Square design. A summary of key suggestions or comments about the Town Square includes:

- Town Square must have features required to support:
 - Existing community uses of the space (1) (tie downs for movie screen; electrical bollard; ability to shut lights off for movie night; water access)
 - Music making and playing (1)
- Plantings:
 - Add more trees, to provide shade and seating under trees (6)
 - Add plants or grass around the base of trees in the grove (4)
- Size and layout:
 - Do not make larger than the existing Town Square / Reduce the size (4)
 - Create a smaller square if this can reduce impact on existing trees (1)
 - Remove the square, replace with grass (1)
 - Ensure there is enough open space for sports in the square (e.g., hockey, badminton etc.) (1)
- Seating:
 - Preference for standard seating with back rests or picnic tables over round seating platforms (12)
 - Move the seating and grove further south so there is more room for activity in the square (7)
 - Harvest table:
 - Remove (7); smaller tables are preferable so multiple groups can sit at once, and they can be moved.
 - Move the location so it doesn't block access to washrooms or interrupt flow north of field house (1)
 - Do not include defensive design (2)

- Remove the skate dot (4) due to noise, safety, and bench maintenance concerns
- Do not use wood for seating due to aging concerns (2)
- Add café tables and chairs and picnic tables (2)
- Ensure seating is heavy but moveable for events (1)
- Other:
 - Provide non-tree shade and rain protection (2), especially over the harvest table (1)
 - Add a drinking fountain (1)
 - Add interactive art (1)
 - Add a water feature (1)
 - Add WIFI (1)
 - Use standard lighting features so they are easy to replace (1)
- Paving:
 - Use permeable paving (2)
 - Dislike paving pattern (1)

The majority of respondents are satisfied with the sloped lawn design. A summary of key suggestions or comments about the sloped lawn includes:

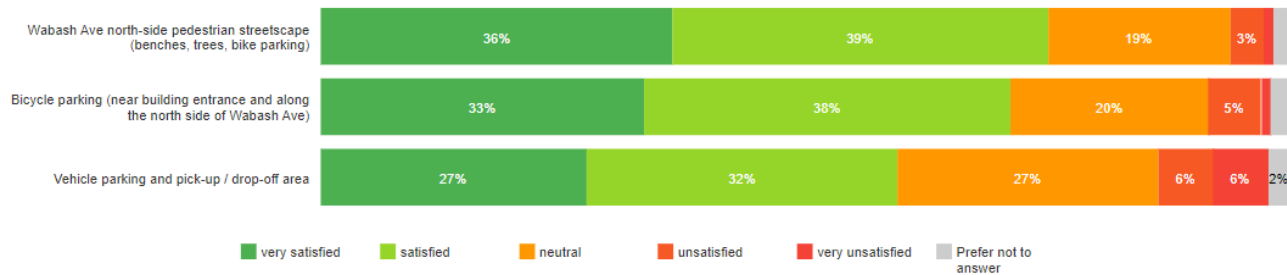
- Ensure stormwater management is addressed to prevent pooling or flooding (4)
- Make the sloped lawn larger (4)
- Install steps or bleachers instead (2)
- Remove part of the bench at the end of the slope so it can be used for tobogganing (1)
- Ensure the lawn is not a slippery winter hazard (1)
- Add evergreen trees (1) and use a more sustainable ground cover like clover as opposed to grass (1)
- Provide more generous circulation space (pathways) around this feature (1)

Other suggestions or comments about the southern landscape not included above:

- Ensure seating provided is comfortable and have backs (12)
- Acknowledge the work of Friends of Sorauren Park in creating the town square and advocating for public space (2)
- Ensure the existing memorial fountain is not moved (1)
- Add more:
 - Trees and plants (10) including:
 - For shade (9)
 - Flowering and scented trees like redbud, honey locust, linden (1)
 - Native fruit and nut trees for harvesting (1)
 - Bike parking (4)
 - Drinking fountains (2)
- Remove stairs leading north from square (1)
- Remove the shipping container (1)
- Relocate existing trees if they need to be moved (1)

Parking, Drop-Off Lot and Reading Garden Area

How satisfied are you with the following designs?



N 405

The majority of respondents are satisfied with the vehicle parking and pick-up / drop-off area design. A summary of key suggestions or comments about the vehicle parking and pick-up / drop-off area includes:

- Parking feedback:
 - Reduce or remove parking (18)
 - Remove staff parking (7)
 - Only provide staff parking (5)
 - Add more accessible parking (5) and provide rain cover over accessible pick-up drop-off or parking spaces (1)
 - Meter all parking (1)
 - Reinstate street-specific parking permits for community members and new parking restrictions for those without local parking permits so there are street parking spaces available for people who live in the neighbourhood (1)
 - Remove on-street parking (drop-off only) (1)
 - Provide more parking (10) including angled or on-street parking (7)
- Concerns over traffic flow and safety (13):
 - Ensure the adjacent neighbourhood won't be overwhelmed by new CRC traffic (4)
 - Consider the traffic solutions for the new CRC beyond the site alone (include neighbouring streets like Wabash, Macdonell and more) (4)
 - Add speed reduction measures like speed bumps on Wabash Ave (2), at the turn where Wabash Ave meets Macdonell Ave (3), and along Macdonell Ave (1)
 - Make Macdonell Ave and Wabash Ave dead-end streets (3)
 - Ensure the pick-up drop-off / parking is safe and flows well:
 - Remove the pick-up drop-off driveway, as this reduces safety and creates more opportunity for accidents. Instead, use a curbside pick-up drop-off (2)
 - Ensure clear sightlines into the parking lot from the street to reduce cars entering when the lot is already full (1)
 - Ensure adequate pick-up drop-off space for people with disabilities (1)
 - Ensure flow is continuous through the pick-up drop-off circle (2)
 - Create separate entrances/exits for the pick-up drop-off/parking (1)
 - Ensure clear separation between pedestrian, cyclist, and vehicular space (signage, permanent bollards, curbs) (2)
 - Ensure pedestrian connectivity to and around the site (no dead-end sidewalks on Macdonell) (1)

- Consider how cyclists will safely get to the location (e.g., Consider bike lanes, access from the future West Toronto Rail Path Bridge etc.) (1)
- Concern that the reading room blocks visibility to the western entrance, creating a safety risk (4)
- Include:
 - Permeable paving (2)
 - More bike parking (1)
 - Electric Vehicle charging (1)

The majority of respondents are satisfied with the bicycle parking design. A summary of key suggestions or comments about the bicycle parking includes:

- Add more (29)
 - Add more bike parking by the western entrance (4) or south of the fieldhouse (1)
 - Add cargo bike spots (2), children's bike spots (2), ebike spots (1)
- Use alternative to post and ring to provide more spots and more secure parking (9)
- Ensure security (e.g., visibility, enclosed units, cameras, indoor parking) (6)
- Add sheltered parking (3)
- Move the parking out of the location by the reading garden/loading dock (1)
- Ensure there is enough space between parking spots (1)
- Support for a bikeshare dock (1)
- Add a bike repair station (1)

The majority of respondents are satisfied with the reading garden design. A summary of key suggestions or comments about the reading garden includes:

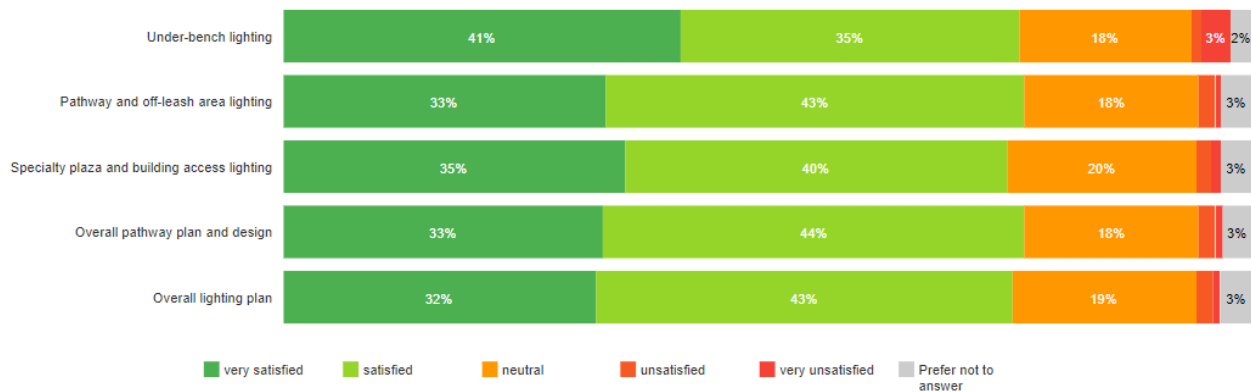
- Include comfortable individual seating with back support (4)
- Concerns about safety and unsocial behavior inside the 'room' (3), consider lowering the wall height (2)
- Remove (3) or replace with a skate dot (1)
- Make the area larger (2)
- Ensure the garden is well maintained (2)
- Support for trees (1) and pollinators (1)
- Ensure the path meanders as proposed (1)
- Don't place garbage bins beside the reading area (1)

Other key suggestions or comments about the eastern landscape not listed above include:

- Add more seating spaces in this area (with backs) (1) and trees (2)
- Do not include hostile seating (1)
- Prevent graffiti, which is a problem in the area (1)
- Ensure all surfaces are accessible (1)
- Add more whimsy (1)

Lighting and Pathways

How satisfied are you with the proposed landscape lighting and pathway designs?



N 400

The majority of respondents are satisfied with the overall lighting plan, planned under-bench lighting, pathway and off-leash area lighting, and specialty plaza and building access lighting. A summary of key suggestions or comments about lighting includes:

- Add more lighting (17). Specific suggestions for improvement include:
 - The north, east, and west sides of the building
 - Inside and around the OLA (including specialty lighting)
 - String-lighting over the town square
 - By the bike parking
 - Baseball diamond
 - For the natural winter rink
- Conversely: Reduce lighting (4) including around the off-leash area and field house, so that neighbors and wildlife are not disturbed by lighting and stars remain visible.
- Ensure light pollution is reduced as much as possible (8)
- Do not include under-bench lighting (6) (cost, maintenance and insect concerns)
 - Contrast (accessibility) issues if light is too bright (1)
 - Ensure specialty parts are ordered and set aside for future maintenance (1)
 - Ensure it is not too bright (1)
 - Use standard lighting to save costs (1)
 - Choose a less modern design that is more in keeping with the heritage building (2)
- Include solar-powered lights (3) and LEDs (1)
- Make light posts high so they are harder to vandalize/break (1)
- Ensure lights can be switched off for night-time community events like movie nights and stargazing (1)
- Use above ground rather than in-ground lighting for durability (1)
- Aesthetic suggestions include: use more bright and fun lighting (1); up lighting on physical features (1); warm, orange-sodium lights (1)

The majority of respondents are satisfied with the overall pathway plan and design. A summary of key suggestions or comments about the pathway plan and design includes:

- Maintain existing park loop, used for kids track and field and learning to ride bikes (1)
- Concerns the pathway on the north and east side of the building are unsafe. These need to be well-lit (1).

- Continue the path from the east side of the building down to Wabash Ave (1)
- Include a pathway to the natural winter rink (1)
- Do not use bricks; these are unsuccessful and need to be replaced in nearby Roncesvalles (1)

Other feedback – Landscape

Additional feedback on the landscape not included above:

- Keep as many existing trees as possible (3)
- Add:
 - A skating rink (4)
 - A community garden (1) or allotment gardens (1)
 - Pickleball (1)
 - More waste and recycling bins (1)
 - A place to rent park toys and games (e.g., croquet, baseballs) (1)
- Do not build the CRC, keep the park outdoor space instead (1)
- Ensure there are no safety concerns if dogs drink out of proposed rainwater gardens/features (1)

Building Feedback

Façade

How satisfied are you with the building façade design?



N 390

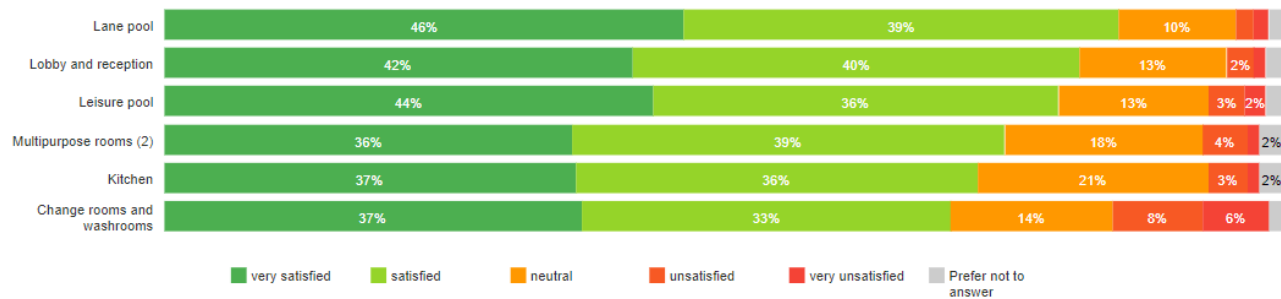
The majority of respondents are satisfied with the façade design. 31 respondents provided written comments about disliking the façade design. Key suggested changes include:

- More or larger windows (11)
- More open and bright aesthetic (10) or more 'natural' aesthetic (2)
- More use of brick or wood to more closely match the heritage building (8)
- More colour (8) and lighter colours (4)
- Less boxy/imposing (5)
- More use of plantings/ trees around the façade (4) and a greenwall (1)
- Concern the building blocks park views downtown (4)
- Windows or art on the south-facing wall (3)
- Add public art (2)
- Add movie screen and integrated AV facing the Town Square (1)
- Prevent bird strikes (1)
- Use graffiti resistant surfacing (1)
- Ensure light will not reflect off of the fins into neighbouring homes (1)

- Include rain barrels (1)

Ground Floor

How satisfied are you with the design of each space on the ground floor?



N 373

The majority of respondents are satisfied with the lane pool design. A summary of key suggestions or comments about the lane pool includes:

- Heat the pool (6)
- Make the pool larger (3) (e.g., 8 lanes, 50 m)
- Use salt water (3)
- Climbing wall:
 - Add a larger climbing wall (1)
 - Remove the climbing wall due to safety concerns, and the need for dedicated supervision (2)
- Ensure the space is bright (e.g., Regent Park) (1)
- Make the shallow end deeper to facilitate flip turns when swimming laps (1)
- Add:
 - An on-deck seating area for parents/caregivers (1)
 - Diving board(s) (1)
 - More play elements (1)

The majority of respondents are satisfied with the leisure pool design. A summary of key suggestions or comments about the leisure pool includes:

- Add more play elements (7) (e.g., waterfalls, slide, water guns, jets, bubble volcanoes, bubblers, water mushroom/umbrella etc.)
 - Consider Pam McConnell and Douglas Snow Aquatic Centers for examples (2)
 - Remove the dump buckets (2) because they exist across the street (1) and can be a safety hazard and are not relaxing (1)
- Heat the pool (4)
- Make it deeper (3) (e.g., for aquatic aerobics classes) and larger (2)
- Include an on-deck seating area for parents/caregivers (1)
- Use salt water (1)
- Remove and make the lane pool larger (1)
- Provide greater separation between the pools so children do not interfere with lane swim (1)

The majority of respondents are satisfied with the change room and washroom design. A summary of key suggestions or comments about the change rooms or washrooms includes:

- Provide more change rooms and washrooms. There is a concern there are not enough of these facilities to service all of the activities taking place throughout the building (as these are the only change rooms and showers) (16)
 - More private washroom stalls (1)
 - More private shower stalls (1)
 - More universal change rooms with showers (1)
 - Provide more family-sized change stalls and bathroom stalls with child-sized toilet (2)
 - Provide shared, gendered changing spaces to reduce demand on private changing spaces (1)
- Provide both gendered and non-gendered options (14)
 - Provide gendered facilities (8)
 - Happy to see universal facilities (6)
- Provide private shower stalls so people can shower without bathing suits (11)
 - Concerns include:
 - Showering with bathing suits on is unhygienic and leaves people with irritating chlorine on their bodies (3)
 - Lack of private shower stalls will result in people using the universal washroom with private shower, making those with accessibility needs waiting in long lines (2)
 - People who are using the CRC for non-swimming activities will not be able to shower (1)
- Concerns the stall layout is difficult to keep clean and will need special attention (4)
- Include:
 - Lockers (6) (helps avoid clutter on the pool deck and provides a secure place for things like bags, wallets, coats, and boots)
 - Privacy barriers between showerheads to provide some privacy (3)
 - Plentiful hooks throughout the space and on deck (2)
 - A family change room with change tables (1)
 - Hairdryers at various heights (1)
 - Benches in the change room (1)
 - Change rooms and washroom doors that are floor to ceiling height (1)
- Outdoor access washrooms:
 - Locate outdoor-access washroom entrance on the park side to improve safety (1)
 - Ensure the outdoor access washrooms are operational and open for people to use (long hours) (1)
 - Include more outdoor-access washrooms (1)

The majority of respondents are satisfied with the lobby and reception area design. A summary of key suggestions or comments about the lobby and reception includes:

- Make the space lighter and/or colourful (4)
- Add:
 - More seating (2)
 - Art (2)
 - Movable risers for presentations/performance (1)
 - Electrical outlets for the public (1)
 - A fountain (1)
 - Plants (1)
 - Indoor play features (2) (e.g., slide, climbing, playground)

- Place to buy food (e.g., coffee, snacks, vending machine) (2)
- Remote workstations/ spaces (1)
- Make the space smaller, and programed spaces larger (1)

The majority of respondents are satisfied with the kitchen design. A summary of key suggestions or comments about the kitchen includes:

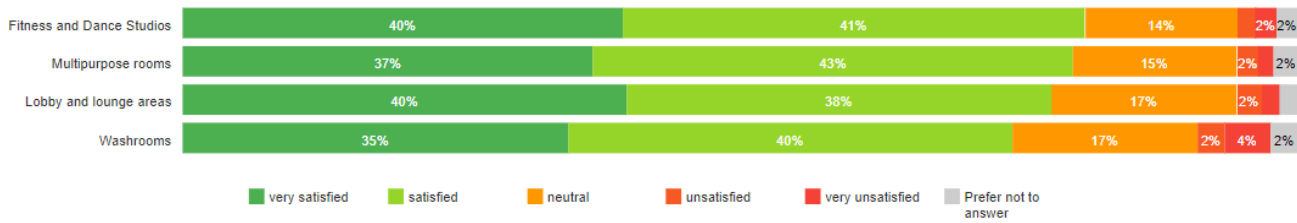
- Ensure kitchen and equipment can accommodate a range of food-based events including cooking classes for all ages, wine tastings, Farmers Market events, and other community events etc. (3)
- Give the space a warmer, more welcoming, less institutional feel (3)
- Do not include this teaching kitchen in the CRC (3)
- Include:
 - A serving window towards the lobby (1) and town square (1)
 - A commercial kitchen for use by local small businesses (1)
 - A commercial dishwasher (1)

The majority of respondents are satisfied with the multipurpose room design. A summary of key suggestions or comments about the multipurpose rooms includes:

- Programming suggestions:
 - Arts, and crafts (2)
 - Community events and meetings (1)
 - Playroom for toddlers and their parents (1)
 - Market space (1)
 - Indoor movies (1)
- Size:
 - Too large, can be used for other activities and sports (3)
 - Too small, increase using lobby space (1)
- Include:
 - A stage or risers (2)
 - Adaptable furniture, multiple seating options, and multiple configuration options (2)
 - Cupboards for storage (1)
 - Electrical outlets (1)
 - Sufficient wall space for universal and fixed AV equipment with large wall screens for presentations (1)
- Create a more unique/inspiring space aesthetically (2)

Second Floor

How satisfied are you with the design of each space on the second floor?



N 387

The majority of respondents are satisfied with the fitness and dance studio design. A summary of key suggestions or comments about the fitness and dance studio includes:

- Add more fitness and dance studios (2)
- Ensure sound separation between spaces (e.g., through surface choices) (2)
- Include dance barres (1)
- Make larger (1)
- Place along east side of building rather than next to the pools to avoid humidity and chlorine smells (1)
- Ensure fitness programming beyond dance or yoga can take place here (1)

The majority of respondents are satisfied with the multipurpose room design. A summary of key suggestions or comments about the multipurpose rooms includes:

- There are too many. Reallocate this space to other uses (e.g., larger gym, more fitness/physical activity space, climbing, larger dance studios etc.) (6)
- Include a children/toddler play space and parent meeting space (1)
- Ensure maker and art activities (e.g., Tibetan weaving) can take place here (1)
- Provide technology access for community including printers, computers, 3D printers (1)
- Support for the use of accordion walls that allow rooms to be combined (1)
- Include surfaces that absorb sound (1)

The majority of respondents are satisfied with the washroom design. A summary of key suggestions or comments about the washroom includes:

- Include gendered washrooms (8)
- Provide more washrooms overall (5)
- Include completely private washrooms (3)
- Include both gendered and non-gendered washrooms (2)
- Provide changing facilities and private shower stalls for people using the CRC but not swimming (e.g., to shower after a fitness class) (1)
- Ensure washroom doors are floor to ceiling (1)

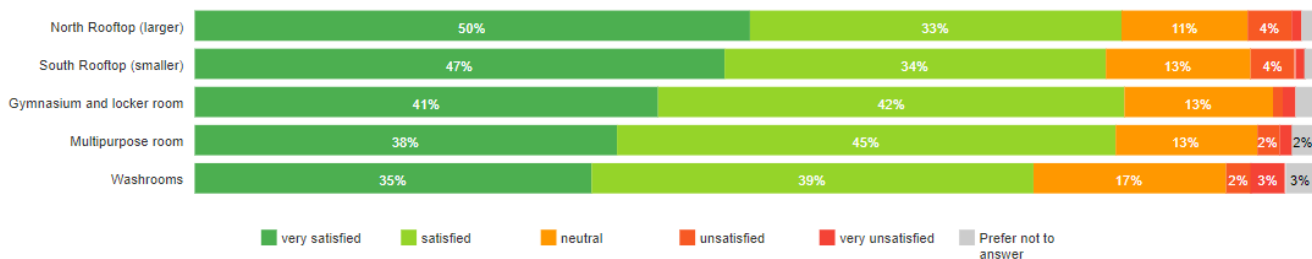
The majority of respondents are satisfied with the lobby and lounge design. A summary of key suggestions or comments about the lobby and lounge includes:

- Reduce the size and program the space instead (4)
- Add:

- Café or retail spot (2)
- More colour (2)
- Workspaces (e.g., for students, parents, and others) (2) and support spaces like a meeting rooms and printing stations (1)
- Play structures for kids, which is especially useful in winter (1)
- Sound attenuation so the space is not too loud (1)
- Effective seating, especially for parents waiting for children in programming (2)
- Plants and greenery (1)
- Art that is representative of the diverse community (1)
- Make the stairs more rounded to fit the other forms in the space (1) and move placement away from the windows (1)
- Ensure windows on the east side are full height (1)

Third Floor and Rooftops

How satisfied are you with the design of each space on the third floor?



N 355

The majority of respondents are satisfied with the gymnasium and locker room design. A summary of key suggestions or comments about the gymnasium and locker room includes:

- Make the space larger to accommodate indoor soccer and multiple pickleball games (2)
- Provide more change rooms on this floor. There are not enough change rooms in the CRC to meet demand (7)
 - Concern that changing in the pool change room will lead to wet shoes in the gym (1)
 - Concern people will use upper-floor washrooms to change, impacting people who need to use the washroom, especially accessible washroom users (1)
 - Provide full-height lockers (1)
- Ensure basketball nets are adjustable by staff to 8 feet for children to play basketball (1)
- Include an FIBA –sized court (1)
- Provide clarity on whether the locker room will be gendered, and if not, how it is meant to function (1)
- Provide private showers so that people in the CRC for non-swimming activities (therefore without a bathing suit) can still shower after activity (1)

The majority of respondents are satisfied with the multipurpose room design. A summary of key suggestions or comments about the multipurpose rooms includes:

- Add more exercise/fitness/gym space instead (5)
- Include dedicated space for a toddler gym/tumbling area (1)

The majority of respondents are satisfied with the washroom design. A summary of key suggestions or comments about the washrooms includes:

- Include more washrooms (4)

- Include gendered washrooms (4)
- Provide completely private washrooms (with sinks) (1)

The majority of respondents are satisfied with the northern rooftop design. A summary of key suggestions or comments about the north rooftop includes:

- Add
 - Shade (10) (e.g., structure, retractable canopy, or plantings)
 - More seating (4)
 - With views of the sunsets (2)
 - Tables and chairs (1)
 - Gardens (community garden, allotment gardens, and/or food and herb gardens) (2)
 - Electrical outlets and running water to facilitate events on the rooftop (1)
 - Beehives (1)
 - Access pathways to the green roof portion of the roof (1)
 - Stairs up to the rooftop from the park (1)
 - More privacy to the fitness space (1)
 - Play or climbing structures for kids (1)
 - Kitchen (for catering events) nearby (2)
 - Washroom facilities very nearby (1)
 - Ping pong tables (1)
 - Café or bar (1)
 - Rain storage (1)
- Flip the location of the public access space so views are over the park rather than towards the downtown (1)
- Ensure plentiful public access to this space (1)
- Reduce the size of the solar energy generating area and replace with public access uses (1)
- Remove the outdoor fitness, instead include an indoor weight room (1)
- Concerns:
 - Risk of people jumping or falling off rooftop (2)
 - Costly (2)
 - Concern the rooftop views impede privacy of nearby residents (1)
 - Feels disconnected from the rest of the building (1)

The majority of respondents are satisfied with the southern rooftop design. A summary of key suggestions or comments about the south rooftop includes:

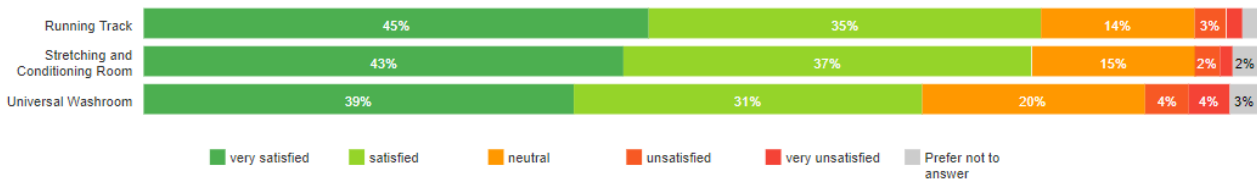
- Add
 - Shade (9)
 - Seating (5) that is shaded, with views of the sunset and of the skyline
 - Community (1) or allotment (1) gardens with water access (1)
 - Evergreens (1)
 - More space (1)
 - Rain storage (1)
 -
- Concerns
 - Costly (2)
 - Privacy of nearby neighbors (2)
 - Safety risk of people falling or jumping off (1)

Other key suggestions or comments about the third floor include:

- Add lobby seating for viewing games in the gymnasium (1)

Fourth Floor

How satisfied are you with the design of each space on the fourth floor?



N 355

The majority of respondents are satisfied with the running track design. A summary of key suggestions or comments about the running track includes:

- Consider more rounded and banked corners (3), especially to be easier on peoples' knees.
- Noise and safety concerns about the open area in the centre of the track (items and people going over the railings) and suggestion to fill in all or some of the open area (3)
- Consider accessibility needs by ensuring standard height and design for railings to allow persons with mobility challenges to hold onto something for rehab and as required (e.g., York Recreation Centre) (1)
- Make the track larger overall (1)
 - At least 50 m straightaways (1)
 - More than 2 lanes (2)
- Consider the needs of competitive athletes (1) or track clubs (1) when designing the shape and choosing surfacing
- Ensure enough height for runner (1)
- Use colours to mark the walking and running/passing lanes (1)
- Consider mondo surface (1)

The majority of respondents are satisfied with the conditioning room design. A summary of key suggestions or comments about the stretching and conditioning room includes:

- Make the space larger (2) and ensure it can accommodate group classes (1)
- Include railings for accessibility and to support physical rehab activities (1)

The majority of respondents are satisfied with the washroom design. A summary of key suggestions or comments about the fourth-floor universal washroom includes:

- Build more washrooms on this floor (10)
- Include gendered washrooms (4)
- Ensure the washrooms is fully accessible including a changing table (1)
- Locate closer to the conditioning room/ track entrance – the current location feels unsafe and not convenient (1)
- In addition to the washroom, include change rooms on the fourth floor. There is a concern people will end up using the washroom to change due to lack of facilities, which will especially impact people with disabilities who need to use the washroom. (1)

Other key suggestions or comments about the fourth floor include:

- Add seating in the lobby space (1)

- Do not include a fourth floor to reduce building height and lessen view impacts on neighbors (1)

Other Feedback - Building

Additional comments not listed above include:

- Add
 - A weight room and/or exercise equipment (18)
 - In the fourth-floor conditioning room or elsewhere in the building.
 - A sauna/steam room (10)
 - Space for community performances (e.g., a stage, or movable risers to act as a stage) (5)
 - Squash court (5)
 - A jacuzzi/hot tub (5)
 - Indoor playground/ play/ tumbling area (3)
 - Nursing room (1)
 - Prayer space (1)
 - 24-hour washroom access (1)
 - EarlyOn or childcare (1)
 - More drinking fountain / bottle filler stations in the building (1)
- Ensure a potential West Toronto Rail Path Bridge connection is considered in these designs (3)
- Ensure design is within budget (3)
- Dislike of the architecture overall (1)
- Include affordable housing on the site (1)
- Consider ventilation needs to ensure COVID safety and to anticipate future pandemics (1)
- “Use the term ‘historical’ rather than ‘heritage’; which carries a colonial connotation”(1)
- Meet passive house standards for building efficiency (1)
- Ensure mechanical equipment does not produce noise pollution indoors or outdoors (1)
- Consider how the space could be used as a warming centre (1)

Next Steps

The feedback received in Phase C of community engagement will be used to finalize the CRC design. To be notified with future project updates, including construction updates, visit the [project webpage](#) to sign up for e-updates.



Appendix A: Pop-Up Boards and Dot Vote Results

Help finalize the design for the new Wabash Community Recreation Centre (CRC)!



Wabash Community Recreation Centre



Scan with your smartphone camera for project webpage and survey information.

About the Project

The City has been working closely with the local community to develop a preferred design for Wabash Community Recreation Centre, which will be located in Sorauren Park. In this final phase of community engagement, community members can provide feedback on the preferred design to inform revisions.

Get Involved

Virtual Public Meeting
Wednesday, July 5, 6:30 to 8:30 p.m.
Register: toronto.ca/WabashCRC

Online Survey
Now to July 9
Take the survey: toronto.ca/WabashCRC

Park Pop-Up at Sorauren Park
June 24, 5 to 9:15 p.m.
Before the Friends of Sorauren Park Movie Night

Project Vision

The Wabash Community Recreation Centre will be a space where all community members, regardless of income, race, gender, ability, age, culture, housing status, religion, or spoken language can come together, feel welcome, feel belonging, and participate in recreation and community building activities. The social and community building activities of both the Town Square and Field House are fundamental to the success of the new Centre and any physical changes to these features will continue to support these activities. The Centre will be physically accessible to all and promote environmentally sustainable design by targeting low-carbon emissions and energy use. The design will recognize the area's history, from the historic and enduring presence of Indigenous Peoples on the land to the recent industrial history. Multi-season use, multi-functionality, and integration between indoor and outdoor spaces will be considered throughout the design to ensure community members have access to flexible and functional spaces they can use for a wide range of activities throughout the year, and as the needs of the community change over time.

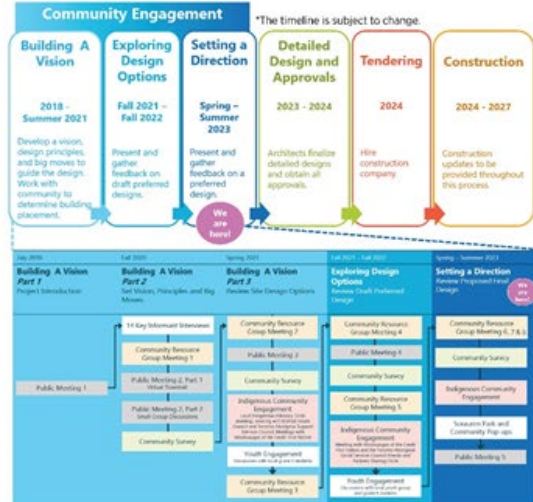
Design Principle 1 Physically design spaces to support equitable access for all people, regardless of income, race, gender, ability, age, culture, housing status, religion, or spoken language, and to ensure all feel welcome, feel belonging, and participate in recreation and community building activities.	Design Principle 2 Recognize the area's history and present elements on both an urban heritage, historical, and environmental level. Collaborate with Heritage Preservation Council to retain and enhance the history and present elements, and any significant heritage elements of the former QX Factory as required.	Design Principle 3 Integrate and use the historic industrial design, scale, and materials to enhance the connection and integration of the new Centre.	Design Principle 4 Support the community building activities that use Town Square and Field House as a platform for physical changes to both.
Design Principle 5 Integrate community building spaces and the ability to host any kind of event, including indoor and outdoor spaces, into the design.	Design Principle 6 Design to encourage access through active transportation and transit, and provide a network of parking to support recreation and community activities throughout the year in weather permits.	Design Principle 7 Design to encourage access through active transportation and transit, and provide a network of parking to support recreation and community activities throughout the year in weather permits.	Design Principle 8 Design to encourage access through active transportation and transit, and provide a network of parking to support recreation and community activities throughout the year in weather permits.

Key Mile 1 Provide the full community recreation centre program as mandated by Council Order 2019-01, and multi-person space, including an addition to the existing paved ball field.	Key Mile 2 Connect the historic center to the largest site and park, providing integration between indoor and outdoor spaces to support recreation and community activities throughout the year in weather permits.	Key Mile 3 Design to maintain and support the use of all community building activities of existing public spaces.	Key Mile 4 Collaborate with Toronto Heritage Preservation Council to retain and enhance the history and present elements, and any significant heritage elements of the former QX Factory as required.	Key Mile 5 Build a large-scale, multi-use, multi-functional building.
---	---	---	---	---

Naming the CRC

This CRC does not have a confirmed name yet. At the end of the design process, CRCs are often given names that describe the centre's features or location (e.g. Parkdale Community Recreation Centre) making it easy for residents to identify and locate in their neighbourhoods and around the city. Alternatively, community members can develop and submit proposals for a commemorative name before the end of the design process. A proposal to give a facility a commemorative name instead of a location-based name is first reviewed by City staff and then needs to be approved by Community Council. Learn more about commemorative property naming and how to propose a name here: toronto.ca/WhatsMyName

Project Timeline*



Lighting and Pathways

Legend

- 1. Town Square
- 2. Skateboard Court
- 3. Sloped Lawn
- 4. Sacred Fire Ceremonial Space
- 5. Social Seating Areas
- 6. Off-Corridor Area
- 7. Pick-up/Drop-off & Parking
- 8. Reading Garden
- 9. Building Entrances
- 10. Drinking Fountain
- 11. Outdoor Water Source
- 12. Harvest Table
- 13. Existing Shopping Container

Legend

- 1. Standard Pathways & Off-Corridor Area Lighting
- 2. Specialty Plaza & Building Access Lighting
- 3. Under-Bench Feature Lighting

Standard Lighting

Specialty Lighting

Under-Bench Feature Lighting

How satisfied are you with the lighting and pathway designs?

Very Satisfied	Satisfied	Neutral	Dissatisfied	Very Dissatisfied
----------------	-----------	---------	--------------	-------------------

Comments/Suggestions

Parking, Drop-Off Lot and Reading Garden Area

Legend

- 1. Building Entrance
- 2. Bench Seating
- 3. Bicycle Parking (post and ring)
- 4. Curbless Unit Paved Surface
- 5. Bollards and Tactile Strips
- 6. Rail Corridor Crash Wall and Berm
- 7. Reading Garden
- 8. Heritage Brick Wall and Chimney
- 9. Tree Planting in Resin-Bound Aggregate
- 10. Parking including Staff Parking (7 spaces)
- 11. Accessible Parking (2 spaces)
- 12. Wheel-Trans Drop-Off/Pick-Up
- 13. Vehicle Turnaround Area
- 14. Loading Area

Legend

- 1. Building Entrance
- 2. Bench Seating
- 3. Bicycle Parking (post and ring)
- 4. Curbless Unit Paved Surface
- 5. Bollards and Tactile Strips
- 6. Rail Corridor Crash Wall and Berm
- 7. Reading Garden
- 8. Heritage Brick Wall and Chimney
- 9. Tree Planting in Resin-Bound Aggregate
- 10. Parking including Staff Parking (7 spaces)
- 11. Accessible Parking (2 spaces)
- 12. Wheel-Trans Drop-Off/Pick-Up
- 13. Vehicle Turnaround Area
- 14. Loading Area

How satisfied are you with the parking, pick-up/drop-off design?

Very Satisfied	Satisfied	Neutral	Dissatisfied	Very Dissatisfied
----------------	-----------	---------	--------------	-------------------

How satisfied are you with the outdoor reading garden?

Very Satisfied	Satisfied	Neutral	Dissatisfied	Very Dissatisfied
----------------	-----------	---------	--------------	-------------------

How satisfied are you with the pedestrian and cycling infrastructure?

Very Satisfied	Satisfied	Neutral	Dissatisfied	Very Dissatisfied
----------------	-----------	---------	--------------	-------------------

Comments/Suggestions

North Landscape: Off-Leash Area and Social Seating Area



- Legend**
1. Post and paddle fence
 2. Public access double-gate
 3. Maintenance access
 4. Engineered Wood Fibre surfacing (mulch-like)
 5. Sloped Planting buffer
 6. Dog waste bag dispenser and trash receptacle
 7. Benches
 8. Boulder and log dog play elements
 9. Drinking fountain, bottle filler, and dog water bowl
 10. Tree planting in decorative paving
 11. Circular social seating platforms

The shape and location of the existing off-leash area will change. The off-leash area will be located north of the new CRC. It will have improved drainage and be 850 square metres in size, about two thirds (2/3) the size of the existing off-leash area, to accommodate the footprint of the new CRC.

How satisfied are you with the design of the Off-Leash Area?

Very Satisfied	Satisfied	Neutral	Dissatisfied	Very Dissatisfied
----------------	-----------	---------	--------------	-------------------

How satisfied are you with the design of the Social Seating Area?

Very Satisfied	Satisfied	Neutral	Dissatisfied	Very Dissatisfied
----------------	-----------	---------	--------------	-------------------

Comments/Suggestions

Town Square and Sloped Lawn

The Town Square is an important hub of community activity and gathering. The new Town Square will be expanded and include a large, flexible open space to facilitate a wide range of events and activities (e.g. Farmers' Market, movie nights, concert/sport viewing nights, and space for kids to ride bikes and scooter, space for ball hockey or pickle ball, space for skateboarding).



- Legend**
1. Town Square
 2. Skateboard dot
 3. Sloped Lawn
 4. Social Seating areas
 5. Feature bench
 6. Western Building Entrance
 7. Sidewalk
 8. Bike Parking
 9. Vendor vehicle access for Farmers' Market
 10. Harvest Table
 11. Existing Pizza Oven
 12. Field House Entrance
 13. Field House washroom entrance
 14. Steps north
 15. Ramps north



How satisfied are you with the design of the Town Square?

Very Satisfied	Satisfied	Neutral	Dissatisfied	Very Dissatisfied
----------------	-----------	---------	--------------	-------------------

Which seating types do you like for the social seating area and Town Square?

Circular Social Seating Platforms (Image #4)	Benches (Including recycled material benches)	Picnic Tables	Harvest Table (Image #12)	Feature Bench (Image #5)
--	---	---------------	---------------------------	--------------------------

Comments/Suggestions

Sacred Fire Ceremonial Space and Town Square Paving - Proposed Métis Beadwork Design

The questions on this board are exclusively for community members who identify as Indigenous, First Nations, Inuit and Métis.

Through engagement with Indigenous Community members about the Community Recreation Centre, the project team heard the request for a Sacred Fire ceremonial space. The design of this space will continue to be revised based on further feedback from Indigenous community members.

Location: The location was determined based on discussion with Mississaugas of the Credit First Nation and representatives from the Toronto Aboriginal Support Services Council Friends and Partners sharing circle. The proposed ceremonial space location was preferred as it is:

- Located on high ground (spiritually significant), with eastern and western access points
- Close to the building to allow for easy movement to/from indoors
- Near, but not directly on main pathways (people do not need to pass through the space to access different areas of the park)
- Not near the baseball diamond fencing



- Legend**
1. Sacred fire feature
 2. Circular rainwater garden (bioswale)
 3. Stone seating near fire (for small groups)
 4. Circular wooden bench seating (for large groups)
 5. Canopy with privacy screens
 6. Boardwalk/bridge over rainwater garden (no incline)
 7. Sloped planting buffer
 8. Sloped lawn (sloped south)
 9. Protocol Signage



Do you support the inclusion of a Sacred Fire in Sorara Park?

Yes, include this in the design.	Neutral	No, remove this from the design.
----------------------------------	---------	----------------------------------

How satisfied are you with the specific location of the Sacred Fire ceremonial space?

Very Satisfied	Satisfied	Neutral	Dissatisfied	Very Dissatisfied
----------------	-----------	---------	--------------	-------------------

How satisfied are you with the proposed seating?

Very Satisfied	Satisfied	Neutral	Dissatisfied	Very Dissatisfied
----------------	-----------	---------	--------------	-------------------

How satisfied are you with the proposed privacy screening (with open call to Indigenous Artists)?

Very Satisfied	Satisfied	Neutral	Dissatisfied	Very Dissatisfied
----------------	-----------	---------	--------------	-------------------

Are you satisfied with the proposed surfacing (gravel, wood boardwalk and flagstone)?

Very Satisfied	Satisfied	Neutral	Dissatisfied	Very Dissatisfied
----------------	-----------	---------	--------------	-------------------

How satisfied are you with the proposed planting buffer?

Very Satisfied	Satisfied	Neutral	Dissatisfied	Very Dissatisfied
----------------	-----------	---------	--------------	-------------------

How satisfied are you with the proposed rainwater feature?

Very Satisfied	Satisfied	Neutral	Dissatisfied	Very Dissatisfied
----------------	-----------	---------	--------------	-------------------

How satisfied are you with the proposed signage?

Very Satisfied	Satisfied	Neutral	Dissatisfied	Very Dissatisfied
----------------	-----------	---------	--------------	-------------------

What do you prefer to provide shade?

Pergola	Both pergola and trees (see above)	Only trees	Steel	Cast Iron	Bronze	Concrete	Other
---------	------------------------------------	------------	-------	-----------	--------	----------	-------

What material do you prefer for the custom fire bowl?

Sacred Fire Ceremonial Space and Town Square Paving - Proposed Métis Beadwork Design

The questions on this board are exclusively for community members who identify as Indigenous, First Nations, Inuit and Métis.



Beadwork images for reference only—Artist Christi Balaout



The design images shown are only an initial concept. The project team is very open to feedback from Indigenous community members to understand if this idea is supported or if there are preferences for an alternative Town Square pattern design.



Do you support the development of a Métis Beadwork Design for the Town Square?

Yes

Neutral / I don't know

No I would like to see something else
(please share below)

Comments/Suggestions

If you represent or are a part of an Indigenous organisation or group and would like the project team to host a 1 to 2 hour in-person pop-up, virtual engagement session, or other form of outreach, to share the proposed designs and hear feedback from Indigenous members of your community please let us know today or email alex.Lavasidis@toronto.ca.

The questions on this board are exclusively for community members who identify as Indigenous, First Nations, Inuit and Métis.

Do you have any other comments, suggestions or ideas about the proposed Sacred Fire ceremonial space, Town Square paving design, or how to make the recreation centre more welcoming to Indigenous Community Members and uses?

Ground Floor



How satisfied are you with the design of the aquatic wing?

Very Satisfied	Satisfied	Neutral	Dissatisfied	Very Dissatisfied
----------------	-----------	---------	--------------	-------------------

How satisfied are you with the design of kitchen and multipurpose rooms?

Very Satisfied	Satisfied	Neutral	Dissatisfied	Very Dissatisfied
----------------	-----------	---------	--------------	-------------------

How satisfied are you with the lobby and reception?

Very Satisfied	Satisfied	Neutral	Dissatisfied	Very Dissatisfied
----------------	-----------	---------	--------------	-------------------

Comments/Suggestions

Second Floor



How satisfied are you with the lobby and lounge areas?

Very Satisfied	Satisfied	Neutral	Dissatisfied	Very Dissatisfied
----------------	-----------	---------	--------------	-------------------

How satisfied are you with the fitness and dance studios?

Very Satisfied	Satisfied	Neutral	Dissatisfied	Very Dissatisfied
----------------	-----------	---------	--------------	-------------------

How satisfied are you with multipurpose rooms?

Very Satisfied	Satisfied	Neutral	Dissatisfied	Very Dissatisfied
----------------	-----------	---------	--------------	-------------------

Comments/Suggestions

Third Floor and Rooftops



How satisfied are you with the design of the gymnasium?

Very Satisfied	Satisfied	Neutral	Dissatisfied	Very Dissatisfied
----------------	-----------	---------	--------------	-------------------

How satisfied are you with the design of the rooftops?

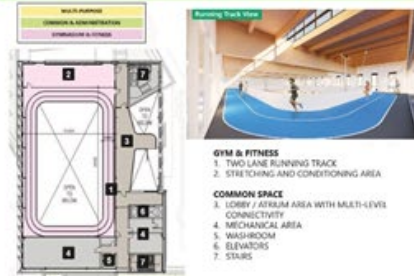
Very Satisfied	Satisfied	Neutral	Dissatisfied	Very Dissatisfied
----------------	-----------	---------	--------------	-------------------

How satisfied are you with the design of the multipurpose room and lobby?

Very Satisfied	Satisfied	Neutral	Dissatisfied	Very Dissatisfied
----------------	-----------	---------	--------------	-------------------

Comments/Suggestions

Fourth Floor



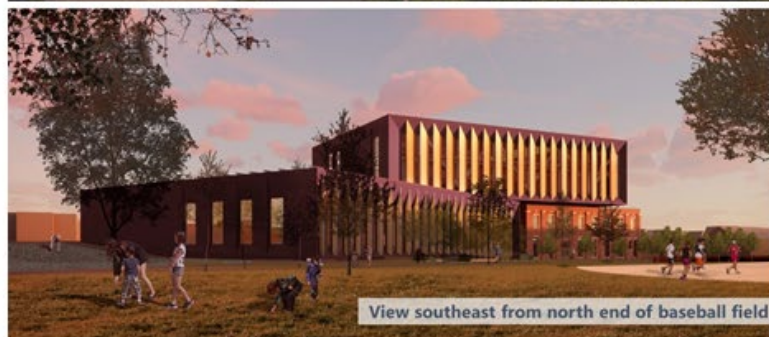
How satisfied are you with the running track?

Very Satisfied	Satisfied	Neutral	Dissatisfied	Very Dissatisfied
----------------	-----------	---------	--------------	-------------------

How satisfied are you with the stretching and conditioning room?

Very Satisfied	Satisfied	Neutral	Dissatisfied	Very Dissatisfied
----------------	-----------	---------	--------------	-------------------

Comments/Suggestions



Do you have any other comments or suggestions for how to ensure the new Community Recreation Centre is designed to be welcoming and accessible for all community members?

Pop-Up Dot Vote Results

How satisfied are you with the design of the:

	Very Satisfied	Satisfied	Neutral	Dissatisfied	Very Dissatisfied
Aquatic wing	2	1			1
Ground floor lobby and lounge					1
Gymnasium			1		
Rooftops		1			
Third floor lobby and multipurpose rooms			1		
Off-Leash Area				1	2
Social Seating Area				1	1
Town Square				1	1
Lighting and pathway designs	1				1
Parking, Pick-Up and Drop-Off area	1				1
Reading garden	1				1
Pedestrian and cycling infrastructure		1			
Sacred Fire location		1			
Sacred Fire seating		1			
Sacred Fire Privacy screening				1	
Sacred Fire surfacing		1			
Sacred Fire planting buffer		1			
Sacred Fire rainwater feature		1			
Sacred Fire signage		1			

Which seating do you like for the social seating area and town square?

- Circular social seating platform: 1
- Benches: 0
- Picnic Tables: 0
- Harvest Table: 0
- Feature Bench: 1

Do you support the inclusion of a Sacred Fire Ceremonial Space in Sorauren Park?

- Yes: 1
- Neutral: 0
- No: 0

What do you prefer to provide shade (in the Sacred Fire Ceremonial Space)?

- Pergola: 0
- Both pergola and trees: 0
- Only Trees: 2

What material do you prefer for the custom fire bowl?

- Steel: 1
- Cast Iron: 0
- Bronze: 0
- Concrete: 0
- Other: 0

Appendix B: Public Meeting Agenda

Wabash Community Recreation Centre
Part C – Proposed Final Building and Landscape

Public Meeting #5

Wednesday, July 5, 2023, 6:30 – 8:30 pm
Via Zoom



Meeting Purpose: To recap what has happened to date and present and seek feedback on the proposed final building and landscape design for the new Wabash Community Recreation Centre.

AGENDA

- 6:30 pm Land Acknowledgement, Welcome, Councillor Opening Remarks**
1. Land acknowledgement and African Ancestral Acknowledgement – Alex
 2. Welcome – Alex
 3. Councillor Perks Opening Remarks – Cllr Perks
- 6:40 Community Guidelines and Introductions**
4. Community Guidelines – Alex
 5. Project Introductions – Alex
- 6:42 Agenda Review – Yulia**
- 6:45 Presentation:**
6. Project Review and Update – Ashley (5 mins)
 7. Inputs into the Design – Alex (3 mins)
 8. Community Engagement – Alex (7 mins)
 9. Building Design – Jarle and Marcin (20 mins)
 10. Landscape Design – Leslie, Dylan, and Terence (20 mins)
 11. Next Steps – Alex (5 mins)
- 7:45 Questions of Clarification and Discussion**
- What are your thoughts on the proposed final building and landscape design?
- How well does the proposed final design reflect community feedback? Is there anything missing?
- Do you have any other feedback or advice for the project team?
- 8:30 Thank you and Adjourn**

Appendix C: Raw Survey Responses

Question 30: Please provide your suggestion or comment about how to improve the design of the off-leash area:

Answers

- Dog owners had better love this area because I'm sick and tired of off-leash dogs taking over the entire park.
- Do not use sand, it's gross and people use the leash area instead
- Size of the off-leash area is small (currently over subscribed within the community). Why sent the Pff-leash area extended to the Rail-line setback area? Shading (trees) within the dog park is lacking. Engineered wood fibre (does that a fancy term for wood chips - if yes then a positive).
- I would like to see 2 double fence entries/exits to allow dogs and people the ability to exit through a different gate if a reactive/aggressive dog/ person enters in the other gate.
- Please ensure there are shade structures for the off leash area for both the dogs and humans who use the space.
- Please consider a commercial dog walker ban (or 1 adult per every 2 dogs) if the size is to be reduced to 2/3 the current size. Commercial dog walkers need to be banned. The current space is monopolized by walkers bringing in large groups of dogs and ignoring them. Would prefer a separate small dog area.
- The dog water bowl needs to be inside the off leash area. This is critical because dogs running around for an hour in the off leash area need water regularly especially on hot days and if you have Spent any time at this park you would know that dogs are regularly in there for an hour or more. Any person who has a dog who plays in a dog park would know this. Also I want to ensure that the fence for the off leash dog area is at minimum the same height as the current fence. Some of these paddle and post fences are to low - for example in high park my dogs can jump almost all of those fences. Fences that are too low put dogs and humans at risk. I also still believe that you should take over the baseball area for the off leash park and make the current off leash park area more of an open entrance area to the new community centre. As a note, if you do not improve drainage then the proposed surface material in the off leash area will be a total failure. We had this type of material originally in the off leash area and it was removed and replaced with sand because of the drainage issue many years ago. I really hope you come through with the improved drainage because this has been a major issue for this dog park.
- Move the north trash receptacle, which is going to stink, away from the seating area. How about locating it near the service entrance?
- The current space is too small and now you have made it smaller still. There are times of the year when the dog park is the only space being used at the park. So why make it smaller?. More people have dogs than ever before. The dogs need exercise. But when off leash areas are too small, some owners cannot take their dogs there. Too many dogs in a small fenced area results in fights breaking out. More people will resort to letting their dogs off leash in other parts of the park. I recognize that it is probably too late to fix this, but when conflicts between people and dog owners increase because of

dogs off leash outside the fenced area, please know that it is because the space is too small for its purpose.

- Multiple public access points from different directions to greater encourage use of the area, too many dog owners currently avoid the off leash and simply off leash their dogs in the sports field.
- The size of the dog park should not be reduced. It is well used and often too busy as is. Removing one of the entry points is also problematic. We often need to use one door or the other to leave the park to diffuse situations involving some aggressive dogs. We need much more space for our furry friends, not less, or the on-leash areas of the park will continue to be used improperly for dogs.
- A dedicated small dog area would be ideal. Small dog owners currently gather outside of the off-leash area as large dogs play differently and can represent a threat to the smaller dogs. Smaller dogs are also closer to the ground and inhale more of the dog park dust. It gets in their eyes too. Many don't like it in there. Small dog owners are likely to continue to gather outside the dog park if a designated space is not provided for them. I also hope that there can be some shade in the dog park. It can get so hot there. My husband, who has vitiligo, had to hide in the meagre shade of the bushes on the east side in the mornings. It's not enough.
- Hi, having the entrance of the dog area so close to the sacred fire area could be an issue. Im not sure if there will always be an active flame but many dogs are stressed or fearful of fire. Perhaps the entrance could be on the north side of the dog area so there is a better buffer between the movement of dogs and the sacred flame space
- Currently large dogs take over the off leash area making it unsafe for small dogs. If this area will be 2/3 the size of the existing one, that will make it worse not better than what we already have. We need a separate small dog off leash area. This could run on the narrow slope north of the planned one.
- The off leash area can be improved by adding shade within the dog area through trees. Furthermore, the entrance to the dog park could benefit from having a double entrance to prevent dogs escaping.
- There should be two double gated access doors because sometimes people bring aggressive dogs into the offleash park and everyone leaves through the other gate. The maintenance gate is not adequate because it's not double gated (safety concern for dogs).
- Wayfinding and signage that off leash area is the only area where dogs should be off leash. Make it easy to access and not muddy so dog owners don't whine and complain then use the fields to let their dogs run.
- This area needs shade
- The off leash area is already too small and the new design makes it smaller. It does not meet the needs of the community
- Is there to be only one new trash receptacle to the north of the dog off leash area? I'm concerned it's too far away. We currently have trash receptacles near the Field House, will these remain in the new design?
- This area is too big and unnecessary in the park. It is as large if not bigger than an area designed for people. This is completely unnecessary. This should be removed or substantially decreased in size.
- Off leash dogs outside of the off leash area is out of control. It is unpleasant for me to visit the park when I'm not a dog person and don't appreciate dogs jumping up on me. I hope somehow this issue is taken into account.
- Not big enough!

- Make it closer to entrance of park. So many owners use the ENTIRE park for off leash play, which means the rest of us can't use the space
- It's fine, I don't like dogs but they need a place to be
- Needs more shade opportunities.
- I am disappointed that the off lease area will be 2/3 smaller. The dog population in this neighbourhood has tripled during the pandemic. Not to mention the dog walkers who bring packs with them. Why isn't there a small dog area? We won't go into the off leash area because my 8 lb dog can't handle the big rambunctious dogs. A bigger off leash area is needed for a park that is heavily dog populated park
- This area of the city is densely populated by dog. The current size of the park is already too small sometimes depending in the time of the day you visit it. Reducing the size to be 2/3 of the current size is not acceptable. Do you expect the dogs to be off-leash in other areas of the park? The off-leash area must remain same size if not larger. Thanks for your consideration.
- The fence seems to low and I'm not clear I'd the wire fence is inside or outside of the wood. I have a jumper and he would easily scale the fence shown.
- Two entrances/exits would be better. The more shade the better also
- Please consider how many kids use this park and make the off leash area as far from other spaces as possible. Also, fines for being off leash outside the area must be enforced
- It's important that there be a lot of signage that indicates this is off-leash only - and reminders that when dogs leave this area they must be ON leashes. A large number of dog owners in this neighborhood are reckless and careless in this regard. They let their dogs go everywhere off leashes. For the good of the rest of us, please please help enforce the rules and expectations with clear signs.
- Two comments as a dog owner: (1) I do not like the idea of the water fountain being outside of the fenced area. In reality this is constantly being used by tired and hot dogs as they play. Moving it outside will either reduce use and therefore have dogs that are dehydrated or owners having to leash their dogs, exit, water, and then come back in - potentially multiple times throughout play. (2) I strongly believe there should be a seperate section for small dogs that is fenced in. There are many dog owners at Sorauren that have small dogs and feel unsafe with the very large dogs. As a result they are leaving them offleash in the field out of necessity, which bothers other park users. If we are redesigning we should be thinking of all dog owners inclusive of small dogs. There are certain parks in Toronto where small and large split areas have been created and are successful (eg Allen Gardens).
- We MUST have drinking water INSIDE the off-leash area. Dog ownership has TRIPLED in the last 3 years; we need MORE off-leash space, not less!! Currently there are dozens of unleashed dogs using the soccer pitch because of overcrowding and the horrible conditions inside the off leash area. There is NO SHADE anywhere inside this area on hot summer days making it nearly uninhabitable.
- The proximity to the building is very unfortunate, there should be a landscape buffer between the two to improve the experience of building users. The lone access point is not ver accommodating, one access point at the north and another at the south would be better.
- This is very disappointing that the off-leash dog park atea has been reduced. There are many dogs that enjoy this space and neighbors are continuously complaining about seeing dogs anywhere but an off-leash park. Please do not reduce the size.
- I don't believe any space should allocated for dogs.

- Please ensure that there is a large enough green garbage bin, this is a highly used park and no one wants overflowing bins
- Hh
- Wood chips doesn't seem to be an ideal surface material for an off-leash dog park. Dogs chew them, they can't get traction when running, and it is hard to pick up poo off them. Is grass/dirt impossible? I've seen it used fairly well at other off-leash parks.
- Needs more than one public access point
- expanding the design of the off-leash area to include a larger square footage would help to encourage more use. The current off-leash area enjoys poor use in part due to its scale, which makes other areas less pleasant to enjoy
- The space will be made smaller, that's not ideal. I didn't see any mention about an area specific to small dogs. 99% of small dog owners near Sorauren do not use the off-leash area because typically there are only large dogs in there. A small-dog area would make a huge difference.
- I quite like the design of the OLA — but I think the landscape designers should consider that the Sacred Fire circle is going to be very near to the dog area and that will mean lots of dogs peeing on the circle. Not the best of optics, so consider some design solutions to deter this.
- Any way to section off a small dog area from the large dog area? This has been an issue in the park with small dogs running in the other areas of the park off leash. This plan doesn't solve the problem at all. I don't need to log and boulder elements, but the open space is good. Would appreciate grass instead of the other material.
- Larger off leash area. More access points. More seating. The off leash is used so much, including other parts of the park - make sure to give enough space for the dogs! This looks like less space
- Two entrances and areas for waste recepticals in the off-leash area would be nice as that is the existing condition of the current facility.
- Dogs and their owners/caregivers are primary and most frequent users of the park, generally 2-3 times a day for 20-60 minutes per visit. They are in the park more than any other type of user. There are three types of dog/caregiver users: small dogs and their owners, large dogs and their owners, and professional dog walkers and their charges. The needs of small and large dogs are different. Sharing space is not feasible for the safety and enjoyment of all dogs, in particular smaller dogs. There needs to be separate spaces for large and small dogs. As well, there needs to be adequate tree coverage to provide shade during hot summer months. Access point to the offleash park should be at an outside perimeter point, not near social seating areas that will most likely be used by nannies and toddlers. We need to ensure the safety of children, and keep them away from potentially exuberant/upset dogs in tight quarters. Given the poorly draining substructure under the offleash area and the current problem with runoff from rain, great care needs to be taken to ensure proper groundcover that is safe and natural for dogs, and ensures effective drainage. Existing groundcover holds dirt and disease that is easily stored, in particular to small dogs as their eyes and mouths are very close to the ground. The dog waste container should be located outside the access point; placed in the middle it serves only as a danger of collision for running dogs. Another improvement to the offleash would be to extend the area up over the tree-covered berm to the east, creating a second contained area for dogs. This would allow two separate enclosures; one for large and one for small dogs. Small dog owners, with a safe and inviting offleash area for their pets, would be far less likely to allow their dogs to run free on the soccer pitch or ball diamond outfield. Pet owners do not feel as if they

have been listened to nor heard during the planning and design of the redesign of the parkland to accommodate the recreation centre. This is a heavily used park and regular users must be considered, not just future rec centre users. There are parks all around the city that have small/large dog off-leash areas. There is adequate space to accommodate everyone. Thank you.

- A single public access point is problematic. If a dog is aggressive and needs to leave, this becomes a choke point. The current dog park has two accesses which mitigates this. More trees in the dog park. The solar exposure is intense and more shade is necessary.
- I am concerned about making the off-leash area smaller- it is a busy dog park as it is and the area population is increasing. If there is a change then it should increase in size, or offer a small dog area. I think the design looks nice overall, and getting rid of the sand/gravel is welcomed. Please reconsider the size.
- Having a fountain for dogs inside the off-leash area is of utmost importance. 2. it would be nice to have a gate to enter from both the north and south sides (design of the current off-leash dog park). 3. Having multiple rocks together seems like a hazard when dogs are playing. There should be one or two rocks at most.
- Perhaps further investigation as to materials that can be selected / a portion of the off-leash area made of a different material so that the water fountain/dog bowl can go inside the off-leash area.
- Currently, dog owners tend to use the other public space around the off-leash area instead of the designated area. It would be great if this space were actually used and dog owners were discouraged from taking over other nearby spaces.
- there was a lot of dogs in our hood already and this increased with covid. i wish the area was larger but the design is an improvement over what we have now. so we'll done overall
- ground should be natural so the paws do not get injured
- Many of the off-leash parks in Toronto have lower fences which I have seen plenty of dogs jump. If there can be a higher fence I think it would make the off-leash and on-leash areas more accessible to all.
- Hopefully the maintenance entrance can also be used by humans? Also I'm not sure what the shade will be like coming from the building, but it's crucial that there is lots of shade in the dog park so the dogs don't overheat in summer. If possible it would be good to have more trees perhaps in the middle, or more trees in general.
- I am concerned that the space is too small. The dog park seems to attract lots of dog fights, and the smaller space may lead to more issues. As an owner of a small dog, I cannot use the dog park now as it's not a safe space for small dogs. Is it possible to build a small dog park area in the park? Also, there need to be more trees for shade around the dog park. Thank you
- It's a smaller area than it was before - the dogs like to run - the playground style logs etc aren't necessary and will take up valuable space.
- The DOLA looks smaller than it currently is. I hope that it will not be scaled back too much in size.
- Need for shade in off-leash area, both for dogs and their owners. Don't understand the "log play" concept
- Opposed to making the off-leash area smaller
- N/a

- One of the biggest problems with the off-leash area now is that there is NO SHADE. This design does not address this problem. Having a few play elements added is good, but PLEASE think about having some shaded areas, it's brutal in there without it. I also don't understand why the new off-leash area is smaller, and I think there needs to be more seating in different parts of the area.
- More seating would be appreciated. Otherwise, looks great. The ground at the current Sorauren off leash is horrendous in summer.
- Make sure that dogs are off leash in that area ONLY. It must be enforced
- There should be a separate area for small dogs, either within the off-leash area or in another space. This would allow small dog owners to use the off-leash area without the danger of large dogs. There is currently not enough space for the number of dogs that use the park, and if the off-leash area is reducing in size it needs to accommodate all dogs safely to address the issue of off-leash dogs outside of the off-leash area.
- The size of this area should be made bigger than the existing area, NOT smaller. There will be increased dog fighting in such a small space and while the "play" elements may seem like a good idea to a human, in a chase or even fight situation, these boulders will become lethal weapons. Whoever designed this area must hate dogs. Owners will be forced to take them off-leash in areas they aren't allowed for the safety of their dogs. I would suggest you consult a trainer who knows something about dog behaviour in small, enclosed areas. Fights will result bc of there is not enough space to move around comfortably. So disappointing.
- There should be two entrances/exits similar to the existing off-leash area, this makes it easier to get in and out of the area espically if one entrance is currently in use. Additionally the dog water bowl needs to be inside the off-leash area to ensure ease of use as dogs will go to the bowl to drink in the middle of playing and then resume play time. It is highly illogical to have to remove your dog from the area to give them water and would further increase the need for two entrances/exits.
- The off leash area is simply too small and not fit for purpose. The entire easterly fence line treed are could be added to the off leash area. It's used for nothing else are present. The design elements are fine but they don't matter if you don't make the off leash significantly bigger. Huge increase in dogs in the vicinity recently and trending higher
- The dog area is way too small. If anything, this should have been a larger area, particularly given the high traffic of dogs in this park. I'm very disappointed. The boulders and other objects in the off-leash area will become dangerous in times of chase and/or fights, which will be inevitable because dogs need SPACE to feel calm and safe to engage each other. In a small area, they will quickly leap to 'fight' if they feel they cannot get out (or flee) or feel cornered etc. I understand the city doesn't care about dog owners or dogs, but just imagine the children who will be witnessing dog aggression/fights, which is loud, stressful, scary, and difficult to stop one started.
- How would someone in a wheelchair or scooter access the inside of the leash free area? There should be an asphalt path within the fencing
- Preserve current area size of off-leash area due to a lack of other DOLAs in the area
- Please make sure the people flow into and out of the Dog leash area makes proper sense overall. You don't want incoming gates to prevent outgoing people and dogs so please make sure the flow is overall proper.
- Great design. More bog waste disposal bins would be good
- there are two trash receptacle locations at the existing off-leash area and I think both need to remain in the redesign.

- If at all possible, it's good to have two entrances/exits to the off-leash dog park. If 2 dogs happen to get into a fight or there's a 'problem dog', it's handy to have an exit near by to avoid having to walk the length of the dog park.
- There needs to be shade of some kind, dogs can get extremely hot the warm months
- I'm aware there's some pushback to the off leash area being made smaller. I wanted to record a comment that I support the smaller size of the off leash area in this new design. the park is for a wide range of users of which dog recreation is only one use.
- I think dog owners need to be engaged about how to best use this space. I have seen an uptick in dogs off leash at the park area. People mostly use the soccer field or main field, not the dog park. I don't know why but it's frustrating when it's there and not being used for the intended purpose.
- Is the off-leash area proposed to be sloped? The bag & disposal area by the one bench area should be moved away from that bench area, or at least the disposal part be moved. Is the entrance to the off-leash area proposed to be wheelchair accessible?
- Could we plant large shade trees along the south side of the off leash area? Well, trees that will grow to be large at maturity, I mean. Maybe some trees within the off leash area, but protected by a small caged area until maturity. Closing a canopy of trees over the area would be amazing!
- There shouldn't be one. Dedicating this much space to dogs at the expense of people, vegetation and kids is ridiculous and so Toronto-politically-correct it's infuriating and nauseating. Grow a backbone, City of Toronto planning, parks and urban design!
- It's too small given the amount of dogs that now use the enclosure. This will lead to less people taking their dogs inside the enclosure
- My only concern is that the current off-leash area is already too small for the number of dog-owners that use it, and many people use the rest of the park as an unofficial off-leash area. So it is a worry that the new off-leash area will be smaller than the old one.
- Currently, people let their dogs off leash in big groups on the soccer field while the off-leash area is literally empty. Better enforcement and fines, please. It's especially bad morning before work hours.
- Does the social seating need to be near the dog area. Not everyone loves dogs and not every dog owner is responsible.
- I have an issue with the size of the off leash park in the conceptual design. It's currently not that big and now you're going to take 1/3 of it away. Please consider how many more people have dogs now and will want somewhere for their dogs to play while their children are swimming or playing baseball or soccer or using the community centre in general.
- The off leash area is too small. This is a high usage DOLA which my family and I use daily. It is often crowded with 15 or more dogs and 15-18 humans. It should be larger than the current area or the same size, BUT CERTAINLY NOT 2/3 of the current dog park size.
- The off-leash area needs to be BIGGER not smaller than the existing space. The dog population of the neighborhood is huge. Also, there should be a separate area for small dogs. Plus, much more shade. And an area that is sheltered from rain and snow.
- Larger. Shade / cover in some part.
- The OLA looks fine as is, but we're worried that it doesn't incorporate or anticipate the future ramp landing of the West Toronto Railpath (WTR) bridge expansion. There is an opportunity to connect the WTR to Sorauren Park across the Kitchener Line Metrolinx corridor. The landing of any potential future bridge would very likely be in or around the

proposed OLA. We believe that these two uses are not mutually exclusive (ie, bridge, stair, or ramp footings could be located on or over the OLA), but they do need to be planned for.

- The off leash area in the park is already too small and now the new design is going to be even smaller? The dogs hate playing in this 'cat litter pit' as everyone calls it. There's no shade, there's nowhere for them to run and play. Hence why everyone had their dog off leash in the back of the park. Can dog owners design this, or is it people that have no experience or knowledge of dogs that are designing this?! This is horrible.
- Need a bigger space.
- How could off leash area be made smaller. There has been so many people asking for a grassy open area for the dogs to be able to fetch a ball and the proposal is for a smaller off leash area with no room? How is this going to address the issues that exist in the park. We need a long, grassy space for the dogs to run. Use some of the park land to provide this and stop all the off leash issues park users are complaining about.
- This offleash area is not nearly big enough. Currently dogs run free on the open park land, which is a real issue. Making the offleash area smaller than it is will not help with this problem.
- The off leash area should be bigger than it is currently, not smaller!
- The off leash area is vital to the community of dog owners. We dont all have backyards and having a good space for our dogs to run around is really important.
- The off leash area is already too small. It is a terrible idea to make is smaller. There are already issues with the number and size of dogs at peak times. As it stands, we need a larger or second area for smaller dogs. Making it smaller is a recipe for even more dogs on the grassy areas outside the off-leash area. You are setting the neighbourhood up for increased conflict.
- The smaller area my biggest issue with the new design, given one of the biggest things dogs like to do there is run its minizing the area they can really open up plus by adding all of the new elements limits this further.
- The number one problem with the current offleash park is that there's absolutely no shade. Now you've updated it and there's still absolutely no shade. Please add some trees or structures inside the offleash area, this dog park is unusable for most breeds of dog in the summer time and incredibly uncomfortable to stand around in.
- There are SO many dogs in this neighborhood and very few dog parks nearby. Please reconsider the size of this park and consider a separate area for small dogs. People are constantly complaining about loose dogs on the current grass, this happens because the existing space doesn't meet the needs of the dog owner community. Why bother building a smaller space when the current one is inadequate.
- Shade, shade, shade. Natural or constructed... Shade.
- Reducing the dog park is not the best idea as it already is pretty small for such a populated neighborhood also it would be great to add some shade as it's horrible is the summer and it's hard for dogs to not have any shade at all to cool down
- No reduction in the size of the dog off leash park. Add trees (or other elements) for shade in the dog park.
- There are so many dogs that use this space by making it smaller you are encouraging owners to use the park vs the off leash area. If anything the off leash area should be made bigger.
- Concerns with the proposed size of the new off leash park. Current park is not well used and most of the time there are more off leash dogs in the on leash portion of the park vs

off leash area. Reducing the size of the off leash will not help with this ongoing issue and I'm concerned it will continue.

- The offleash area could be larger to accomadate the volume of dogs in the area and discourage dogs being off leash in the remainder of the park. As well more trees/shade structures will be necessary.
- Not enough shade. Trees should be in the central area too for dogs and people. Shape of it should not be circular, rather with bends. Irregular shape gives dogs space from each other when needed and esthetically more appealing. The entire space should be much bigger than the current design not smaller.
- Considering the amount of dogs in the area, I strongly feel the off leash space is too small. The current park also lacks any shade, which is very important in the summer months.
- Water station for dogs should be both inside and outside of the off-leash area.
- There is a lot of conflict in the community about dogs being off leash outside of the existing off leash area. Dog owners have said the exciting off leash area is too small, does not work for smaller dogs so they bring their dogs outside the fence. Having a smaller off leash area (with water outside of the fence) will not help this issue.
- If the water dispenser is going to be outside of the off-leash area it should be located near the entrances so people can quickly and easily access it .
- more
- As a dog owner who actually USES the existing DOLA, I fear little about this design will improve the ongoing problem of too many dog owners illegally letting their dogs off-leash on the sport fields. Those dog owners typically cite the size of the existing DOLA, its lack of shade AND the lack of a separate area for small dogs/puppies. As near as I can tell, this proposal shrinks the DOLA, does not seem to add shade, and doesn't add a small dog area which exists in some TO dog parks. While I believe that dog owners have a responsibility to work with the amenities available to them, I just know from experience that the proposed changes will actually just embolden dog owners to flaut the law. To make this dog park redesign a solution to the existing problem, the process needs to not only improve the play surface, drainage and accessibility (which the proposal does!), but also offer shade (at least seasonally), a sequestered area for smaller dogs, and ideally be larger/more conducive to people running their dogs with fetch etc.
- It would be ideal to have some shaded areas for the dogs. This area looks like it would be in the direct sun with no shaded areas. It would be nice to have seating areas that are shaded too in the off-leash area.
- Make larger, there are a lot of dogs in the neighborhood and a larger off leash area will encourage others to use the area appropriately.
- It should probably be larger or perhaps split into two for big dogs and small dogs. Too many people in the park don't use the current one.
- The off-leash area is already small as-is. Why are we making this even smaller? TONS of dog-owners use this every day, and it's the only one in the area. We, the people who use the dog park, should not be penalized by those who choose to have their dogs off-leash outside of the off-leash area, if that is the case. I'm appalled by how much smaller you are considering making this dog-park. It's a real shame.
- I would like to ensure the off leash area is similar to the current size. As the area grows more and more people are bringing in dogs from other neighbourhoods as well as our own neighbourhood within the last 10 years it is almost 3 times the amount of docs please do not cut down the size of the off leash area

- Not large enough and needs trees within in space to provide shade
- Off leash area needs to be bigger not smaller. There r so many dogs in this neighborhood now
- The design elements look good but the overall size seems unsatisfactory for the use in the area. Also there could be a separate portion for small dogs since there have been conflicts.
- The amount of dogs currently letting their dogs off-leash OUTSIDE of the off-leash area should be an indication that a larger, not smaller area is needed. Furthermore there ought to be a section dedicated to 25lb and under breeds as many larger dogs are too aggressive in their way of playing and thus also accounting for more ppl allowing their pets to be off-least in other areas or they simply don't feel safe using the area.
- Great design and use of area. It seems slightly larger than it should be, but works!
Thank you
- Disappointed you are making the off leash area smaller, when the number of dogs in the neighborhood has increased significantly during covid. Its already too small and most people have their dogs off leash outside the off leash area already.
- I feel that the Offleash area for dogs needs to stay within the same dimensions as we have many more dogs in this neighborhood. We have seen an increase of 3x more dogs. All of the dogs are mostly not even in the off leash area. Some not all owners let them run around there will be pooh everywhere in this new park if there is not enough space for these dogs/ dog owners. No more gravel in the dog park no one goes there because it smells like pee - PUT WOODCHIPS IN!
- Provide more shade, perhaps with fabric sail- like structures to throw shade across the central part of area
- I don't have a dog but I know this park is highly utilized by locals! A bigger park would be ideal as the poor dogs in our city don't have much off leash space as it is. If can incorporate larger space it would be better.
- There are so many dogs in this area. We need a larger off leash park so people will use it. le expand towards the tracks down into the slooped land towards the railway fence. More space is required!
- Please please give us more dog park space! Not less!
- Too small!! Dogs need more space to run and the neighborhood has many dogs.
- The off-lease area planned is far too large. There should also be serious consequences for people who let their dogs roam in the park.
- Without shade provided for people it can become unbearably hot.
- Dogs prefer grassy surfaces.
- Leave the outdoor spaces as outdoor spaces
- The OLA should be shifted to go along the metrolinx wall. The proposed location is too close to the new building. It is too small. Furthermore, it will block the natural flow of pedestrian traffic when the bridge from the railpath comes across. The OLA should be moved or eliminated completely.
- The off-leash area needs a number of improvements to ensure usage (and to reduce or eliminate the large number of off-leash dogs illegally using the park: 1. Do not reduce the area of an area already not large enough for the purpose; 2. Provide shade (preferably trees but if trees not possible perhaps sunshades or metal umbrellas); 3. Provide two entrances/exits, not just the one; 4. Provide a small dog area so that it takes away the excuse that 'my dog is too small to safely use the area'; 5. Water MUST be available within the off-leash area. I understand that mould is actually not a problem

where these fake wood chips have been used previously but it that is the concern, just create a concrete area around the water dish; 6. Best dog park design practices would suggest that a walkway be provided to encourage circulation and to ensure accessibility, the balance of the surface area should be astro turf (K9 grass allows proper drainage) which is easier on paws and is more accessible and also allows poops to be seen more easily and picked up. A properly designed off leash area will be used. The one thing I like about the proposed design is the engagement features (ex logs).

Question 31: Please provide your suggestion or comment about how to improve the design of the social seating area:

Answers:

- Social seating area does not look comfortable - in order to be usable for any length of time at least some requires seat backs
- i do not like the tree planting in decorative paving design, i think the circular benches are great.
- Comments on the round wooden seating on the town square. Can they be moved around? What if they are in the way of the movie screen? I know there's going to be lights underneath the social seating and the round seating. Can the lights be turned off for the movies and can that switch be accessed from the outside? Will there be tie downs incorporated in the rounds for the farmer market tents and the inflatable movie screen?
- Adding shade
- Some public art would be nice, or artist designed seating projects.
- Number 10. Tree planting paved area does not look like an idea space for an off leash area. Also it looks like maintaining it in the winter time could be a lot of work having to use pet-friendly ice melt to ensure it's safe for use.
- This area needs shade; happy that there is no hostile architecture :)
- Water fountain location - very far from the courtyard area near the field house building where we currently have a fountain. Will there be two? Will one remain next to the field house?
- You have missed an opportunity to create a bleacher area and an outdoor screen area where people can gather. This is a concept but great inspiration.
<https://www.pinterest.ca/pin/mini-cinema--684758318352240121/>
- Good with me. Please get rid of the existing field house. It is useless! Bathrooms are never available to use and no one is ever welcome in there
- I don't like the lack of back support on the proposed seating.
- Perhaps the next stage of design will provide more helpful detail, but it's seems like too hard of space, rigid.
- For there to be eboigh seating I not just 3-4 benches
- Make the seating COMFORTABLE with back support!
- Circular seating is not social seating, it is anti-social seating because everyone is facing away from eachother. This is a poor design and should be redesigned with purpose. Include tables, individual chairs, and umbrellas for shade so that it's enticing for people who want to sit alone or together
- Lots of space Place!for teenagers and adults too.

- Seating areas should ALL be up against the fencing so as not to interfere with the dogs' ability to race around free of obstructions. WE NEED SHADE on the southeastern and northeastern area of this area!
- Get rid of it, there's not enough space for this, it's disruptive to park circulation and nobody is going to want to sit by the dog park
- Dislike the idea of paved areas in the dog off leash area. Pavement will absorb heat and elevate odors and is not suitable for dogs to use
- Can the social seating area be coordinated with the Monday Market as well as private events associated with the field house (birthdays) and community plaza??
- I would like to see us using permeable materials on the ground so that rainwater soaks into the soil (rather than running off into sewers etc.), for example matrix pavers, permeable bricks etc. and so that grass can grow up.
- Seating with back support is preferable
- The design right now is uninspired. Who are the intended users? Could use a more fun design. This park is used by everyone in the community, but this element doesn't appear to serve anybody particularly well.
- The seating should provide back rests. It's ridiculous that fear of street-involved people using our public spaces means we can't have comfortable seating.
- Im curious about the placement of social seating directly beside a place that will smell really bad in the warm months...
- no comment
- Im not sure I love the decorative pavement? It seems odd to have gravel between these slabs, like a tripping hazard, and also harder to sit on with kids or groups. Seems like the gravel will get out and make a mess.
- Bigger
- more plants in the area
- N/a
- Please add more evergreens. This is a winter city and so bare without evergreens. They look beautiful as well with lights in the winter.
- More seating
- Seating options with a back for resting upper body is also important for those who struggle with physical issues
- We like the shaded area and circular benches to sit on surrounded by trees. Concerned people won't sit on the cement tiles if they are not elevated. Suggest more elevated wooden structures to sit instead of cement or tiles.
- Social seating can be abstract/fun/unusual... how can you make an intervention that encourages people to hang out and interact with others? Maybe this is a good opportunity for a public artwork that facilitates 'social seating'?
- The large round seating areas have been used in other areas and I have noticed that they aren't an efficient social design. They take a lot of space and aren't conducive to good social interaction. Smaller Bench/rectangular shapes allow for more seats in less space and are more comfortable.
- it's nice! excited that there will be some trees and plantings near it.
- anything with back support? Or tables for small meals/gatherings?
- Separation of the two areas
- Enough benches for everyone
- Social seating area should include plenty of greenery and options for shade.
- There needs to be far more seating AROUND the area with more SHADE for all visitors.

- Do not use hostile architecture to deter people from spending time in the park.
- Leave the outdoor spaces as outdoor spaces.
- This isn't needed. Maximize the new OLA space instead. This will only encourage dog owners to have their dogs off leash in this area. We already have a major issue with dogs off leash in the park at large. The Future OLA - which should be located along the Metrolinx wall should be as big as possible and allow separate areas for big dogs and small dogs.

Question 32: Please provide your other suggestions or comments about the northern section of the landscape designs:

Answers:

- need more than one access point into off leash area.
- Please ensure there are signs about Dogs staying ON LEASH outside of OFF LEASH area
- I would add more than one entrance to the off-leash area. Perhaps the 'maintenance' entry can also be utilized by the public?
- Please have NO OFF LEASH signs in all other areas of the parks as Sorauren park has become notorious for having off leash dogs all over the leashed areas making others uncomfortable.
- Re: dog logs etc: most dogs just run around, and now that the space is smaller, there will be less room to run: suggest removing!
- The decorative tile for the tree area looks absolutely awful, is going to be utterly miserable for all the parents pushing strollers around it, and is just such a terrible tripping hazard. Just make the tiles straight and even.
- The design is terrible. We MUST have water fountains INSIDE the O-L area. This is the ONLY O-L park in all of Parkdale, while dog ownership since the Pandemic has at least tripled! High Park is not an option for many due to its distance and those with even minor mobility problems. The OL area should be EXPANDED to the eastern edge, up the hill to the fence line because it would provide the much-needed shade for the dogs and their owners. The entire park is overrun w/off-leash dogs because the OL area is so inadequate and unsafe for smaller dogs. The First Nations circle is not needed but if it must be built it should be relocated so as to not to decrease the size of the OL space. The re-design of this area is completely unacceptable because it will make the problem of unleashed, free-roaming dogs MUCH worse. We desperately need more space for unleashed dogs!!
- Why does it need to be so big. Reduce the size and give more space to the adjacent landscape to create more green space to the west and a landscape buffer between the dog run and the building
- Seating north of the Off-leash Area, along the embankment that follows the rail corridor would also be welcome. There is currently a concrete storage shed as well as a container for storage of equipment related to the sports fields - will those be incorporated into either the field house or the Wabash facility?
- It looks amazing, let's get it built
- Na

- The post-and-paddle fencing around the off-leash area isn't in keeping with the rest of the master plan. The design feels like a temporary stop-gap, instead of an integral part of the design.
- this does not solve the issue that is currently going on at the park. The hostile ground cover is too hot for dogs in the summer - there seems to be little to no shade/grassy area again which is why there are so many off leash dogs in the park as it is NOW.
- Users of the dog unleashed area have requested that it be landscaped like the areas in Bickford and Trinity Belleoods, with softened terrain, trees and something underfoot that is not just hard sand and gravel. I do not see any such elements included in the proposed design.
- Please keep in mind to use proper materials for design phases. being used for all outdoor items to keep in mind the weather we get so that the materials used are practical and functional but also LASTING a long time. remember water and wood don't mix properly over time the wood material breakdown or decompose which in a few years needs replacing. try using more practical materials that will withstand our climate changes which means build QUALITY into the design please
- Dogs don't care about the logs. The look odd. The seating looks uncomfortable
- Given the current difficulties with drainage, please do not minimize what will be required to resolve them.

Question 36: Please provide your suggestion or comment about how to improve the design of town square

Answers:

- Again: some seating needs to have backs or it will not be comfortable or usable for any length of time. 2. The shade grove, in the renderings, looks to have a hard paved surface - this is environmentally more damaging and makes it harder for the plants to survive.
- Please make sure that a plan is in place to support the farmer's market during construction! It's very important to the community.
- I love the beadwork motifs incorporated and wonder how that will be achieved. Hopefully it will be done in a way that won't be effected by winter conditions. In other words it shouldn't be an inlay of material to form the shapes. Cutting into the surface doesn't make sense either. Both methods would eventually become triple hazards much like we experience with paving stones.
- Make the seating too heavy to steal, but light enough to move around so it is flexible and can be moved according to needs. Do the same thing with the harvest table in front of the fieldhouse. Don't make it fixed to a certain spot. We hold dance lessons in the fieldhouse courtyard and we won't be able to with a giant harvest table in the way. It might not work for the farmer's market either. Please make the lighting fixtures the city standard — when one needs to be replaced — the city will replace with a standard fixture anyway. Make all the lights (seating) able to be switched off from the town square for the movies (don't put the switch in the building because the building will be closed half way through the movie nights). Remember we need electrical bollards in the town square and courtyard for movies/farmer's market. We need tie downs for the movie screen (right now we use the memorial benches/light poles). Also in terms of the decorative paving, will the design be executed with paint on the paving or with pavers? Think about maintenance down the line? Will it be easy for the maintenance staff to

repair and still keep the design intact? Why isn't there any grass around the shade trees in the south end of the town square? People like the grass among that existing grove of trees to picnic on. Why have the trees come out of the paving like that? Why not put grass down in those areas? If you have to replace a tree please get large saplings. Also please put water access near those new town square trees — to water the saplings.

- Could we incorporate some sort of canopy over the harvest table? It would be nice to have an outdoor option that's somewhat sheltered from the elements.
- Adding seating area is great
- I have some concerns about the Skateboard Dot and the skateboardable looking Feature Bench. Skateboarding is a loud sport, and feels a bit in conflict with relaxing in sitting areas in the park.
- Regarding Pathways currently noted as one set of steps and two ramps. I wonder, why bother with steps. Why not just ramps for everyone's use?
- Concerned about the scale of the paved square and whether the increased size of it is that necessary, specifically how much of the current larger trees in that area will need to be cut down.
- The feature bench looks way too deep to sit anyone comfortably...unless you want to encourage people to lay down? It seems a waste of space to me.
- The circular seating doesn't look very comfortable, it has no back to lean on which I think is important. Maybe you could add a raised circular area in the middle to act as a back? There are some picnic tables around the square now and while the harvest table is cool in theory, it takes away eating and seating for more people because I think the reality is that if people are there you would not necessarily want to share the table with others on a regular day and not an event.
- I'd like the circular seating to be moveable. Harvest table location impedes traffic to and from Field House washrooms - like to see alternative location, possibly to north of courtyard area. Like to see single long table, not grouping to allow for more multi-use space in the courtyard.
- Where is the shade? On summer hot days most people hide under trees. How can you expect anyone to sit on these tables in direct light? Tables and seating should be covered with some shade structure even if its partial shade.
- Seating is important to me as I have a chronic illness and need to sit. Also I hope all trees and plants will be native.
- Today's town square brick work design allows for pickleball courts (lines) to be easily determined. This is a lovely use of the space. Please do not get overly creative with the design and obstruct the flexible use of the space.
- Many kids use the town square for sports - hockey, soccer, badminton etc. - the seating should be on the edges of the town square to accommodate this activity - seating in the middle of the square will block this activity. Please ensure a drinking fountain, seating with back rests and the vast majority of seating under shade/trees.
- I'd rather keep the size of the existing square and implement some of the improvements suggested. I'd use extra space to keep the dog park at the same square footage as it currently is, and work to figure out a solution for small dogs. I also do not understand the harvest table benefit at all. It seems overly large and would be better off with smaller options for different groups to use.
- We need more COMFORTABLE seating around the perimeter of the square. No one wants to sit on concrete or rock hard surfaces if they don't have to.

- You need to do realistic layouts of the farmers market. The existing layout you're showing isn't accurate and neither is the one you're showing in the new space. The shade grove is random, can there be some actual green space around the trees? The harvest table location looks like I'll consider it as disruptive to the flow of the field house/market. The washroom in the fieldhouse doesn't reflect the new washroom that was recently installed.
- It would be great if there was lots of bike parking. Based on the renders, the bike parking seems limited. I also like the idea of there being more shade from trees than just on the south side.
- Having the seating and trees in the town square reduces an open space for recreational use. A big element is having the open space for the community to come together during farmers market days, movie nights and other events.
- Shaded seating areas would be welcome. Also, publicly accessible WiFi and work areas - e.g.: <https://www.mtlblog.com/montreal/montreal-wifi-where-can-you-find-free-internet-access-in-the-city>
- I love the featured bench — these can be icons of spaces and I think that is an opportunity here.
- Love the idea of a design on the paving. I would suggest furniture for dining - the harvest table idea is nice, but maybe better to have a lot of smaller cafe tables and chairs that can be moved away for farmers markets, and other events. Just an idea, but overall well done and let's stop asking for feedback from the community. You'll never satisfy everyone.
- A grove is more than a collection of trees. Need open soil with other plants. The renders don't show seating under trees. The seating placement is not well considered. The overall square arrangement and shape is awkward and doesn't respect how the park is used today. The local schools use the path for track and field training, but the overall design of everything removed that use. The neighbourhood children learn to ride their bike here, but where is the relocated path that will continue that use? I know that the entire park is out of scope, but it doesn't appear that an understanding of current site uses informed any of the proposed elements.
- With the changing climate and warmer summers, it could be good to add some kind of water feature that mists / offers cooling during hot summer days
- Again, seating should have back rests and be NORMAL seating that people would use, not hostile design meant to discourage use by unhoused/street-involved people.
- no comment
- Not fully sold on the purpose of harvest table.
- The round seating, while cool looking, isn't very comfortable and also encourages people to sit facing away from each other instead of towards each other.
- The park needs more shade. It's very hot in the summer and the building of the rec centre will remove trees currently used by families when they gather at the park. The new paved area by the field house is very large and mostly concrete which is the opposite of what a park should be.
- The town square needs a place for making music. There should be some passive acoustical support to project music into the square.
- The movie screen should be part of the design of the exterior of the building, with integrated AV, etc. rather than at the south end of the town square. Also, the indigenous mosaic design is lovely (and important), but it's unfortunate that those in the community who raised funds and advocated for the town square to be built will have their work

destroyed. It would be nice to acknowledge community supporters of the project in some way. Without the Friends of Sorauren park and community advocacy there would be no park, no town square, no community centre!

- Harvest table is nice in theory but two smaller tables will have more use
- more green spaces
- No skateboard element
- N/a
- Very much appreciate the apparent lack of design elements intended to reduce comfort / not allow a person to lie down - please continue with no defensive architecture!
- I understand the need to have paved space (e.g. to host market, for activities noted), however it seems like a lot of additional paved space that could be better either maintained as is or augmented as greener (treed/grass etc.)
- I would prefer if more trees are planted to create shade even if at the detriment of how open the space is. Ideally a large majority of the seating spots should be shaded between noon and sunset. Also I much prefer conventional benches and picnic tables over the circular benches.
- The plant graphics on the ground are tacky.
- The town square should be design for proper sustainability meaning we want the material selected to last for a long time before they degrade and a repair is required. Wood and water never mix correctly as wood eventually decline in nature so please mindful on material selection process
- Incorporate permeable paving and soil cells
- Disappointed in how paved-over and "downtown" this feels. Hoping we don't lose the organic, historic, and overgrown charm of roncesvalles. Sad to see an overly manicured massive paved space. I'd happily walk through a grassy farmers market.
- the circular bench platforms look trendy but do not look comfortable. A different seating option with a straight back, such as an ordinary park bench, would be more comfortable.
- The social seating circles feel impractical for th big weekly event (the farmers market). Not sure if there is more flexible design options that facilitate dining a bit more easily?
- The wood benches won't weather well and will look terrible in the short term... due in large part to their materiality and the fact that parks is terrible at maintenance.
- Is the paving here permeable?
- While ambitious, it seems overly so t completely revamp the existing town square as part of this development - and thus render the area useless for a long period. past experience is that the City will eliminate much of the park use for far too long.
- Group seating that is conducive to conversation and togetherness for all ages. Current seating feels boring and lack lustre - only accommodates couples not families and friends. Including interactive art like chicagos millennial park would be great for placemaking.
- Providing even more seating, in the form of the circular platforms and/or table and chair sets, would make this an even more welcoming space.
- People want seating with back support or picnic benches; otherwise they will just sit on the grass.
- Judging by the pictures, the shade tree grove won't provide adequate shade for a LONG time making the space unusable on those really bright, hot days. Tree shade is desirable, but some non-tree shade structures should be included that also function as rain covers as well.
- Platforms seating seems a bit uncomfortable for parents with their children

- People need outdoor spaces to stay as outdoor spaces
- The town square MUST have certain things for our events - please see email from May 23, 2023 11:08 AM with FOSP Feedback

Question 37: Please provide your suggestion or comment about how to improve the design of the sloped lawn:

Answers:

- Sloped lawn is a great simple feature, well done
- I'm worried that you have cut down the audience space for the movies quite considerably between extending the shade trees all along the wabash avenue edge of the town Square and the plantings around the ceremonial fire area. You guys should come to a movie night to see the set up and where people sit.
- I'm assuming the current drainage issues will be addressed.
- You missed an opportunity here to introduce bleachers similar to Berlins park that holds Karaoke on the weekends. It doesnt have to be this big but it allows for various cultural events and bookings - <https://secretldn.com/berlin-outdoor-karaoke-london/>
- Installing steps along the whole side where that sloping lawn is would allow more people to sit down on them. The grass is beautiful but always overcrowded on movie nights.
- More access points are needed from the south, one stair in the middle is ridiculous. The circulation around the diamond and the slopes area seems very tight, round the edges and provide more circulation space to avoid maintenance issues.
- this should use a more sustainable ground cover (not grass) such as clover or a pollinator-friendly ground cover
- Needs to ensure adequate drainage to correct existing runoff during heavy rains and snow melt with dirty effluent coming from the offleash area.
- I am mostly concerned about erosion and water runoff - what natural features could be implemented (such as swale/berm) to address that if needed.
- N/a
- Please add more evergreens otherwise it's very bare in Toronto for 5 months of the year!
- Na
- it's great!
- The sloped lawn may be icy and hazardous in the winter, with snow and ice making the sloped lawn quite slippery. The current sloped lawn is hazardous to walk on from January through March, with icy conditions making walking hazardous.
- Make larger, the area needs more green space, not paved over areas.
- People need outdoor spaces to stay as outdoor spaces
- The sloped Lawn has become too small - IF the OLA could be shifed towards the metrolinx wall, we would have more space for everything and a quite grand entrance for the pedestrian bridge coming from across the tracks. The bridge could land into a beautiful natural space with a path to the north to access the OLA (along the metrolinx fence) and the soccer and tennis courts beyond. Or coming from the bridge you could take a path jutting south towards the ceremonial circle as a feature and the community center down the hill. This whole area working is contingent upon moving the OLA.

Question 38: Please provide your other suggestions or comments about the southern section of the landscape designs:

Answers:

- The shipping container is an eyesore. I would prefer that the things stored in their are relocated to the new centre.
- The circular seating looks good but functionality is problematic for families and seniors. No backs and can't face someone you may be conversing with or eating a snack with.
- My concern is that the current trees that were recently planted in the south and west areas off the town square will be destroyed. Is there a plan to protect or relocate the current trees? Some of them have become very healthy and well established in the last 6-7 years and it seems wasteful to destroy them in order to plant new shade trees.
- There is also a memorial water fountain near the bake oven, which I hope will not be moved.
- I actually like the town square as it is right now. That was a community based project and it's a shame that it will be changed so much. Although I agree that it's important to include indigenous input and design, I also believe that the local community has done so much to create this space that there should be recognition of their efforts.
- MORE TREES!! Why not plant a tree in the middle of the circular benches?
- My hope is that the grove around seating areas will not be smaller than existing (still young) cherry trees which will be moved (I believe.) The presence of trees on new drawings is shaded very lightly, and I cannot figure whether these are the older trees to be removed, or new, more richer vegetation. My dream for the landscaped part is of a natural really shaded area, which would allow everyone to sit and meet in a free flowing way, using the different types of benches that are proposed.
- From what it looks like there are stairs going down to enter the square on middle of the north side. People will want to access it from the west side upon approaching from the west and will create their own path in the grass eventually.
- The shared seating and planet trees through out the paved area of the town square takes away from its use for smaller public recreational activities such as practice roller skating, skate boarding and bike riding for kids. I prefer having the open pavement that isn't hindered by seating in and trees dispersed around.
- It's all looking great but can we be sure to incorporate water access & interior (insulated) storage for hoses to support the volunteer ice rink service in winter. Also, can we add more dog waste receptacles (even outside the offleash area).
- Round seating does not allow for privacy and separation like regular benches
- Please, scrap the uncomfortable and unusable circular social seating platforms! They're a really terrible design! Nobody is going to want to sit on them and socialize because you sit facing away from, not towards people. Also, nobody is going to want to sit on them for longer than 5 minutes because they have no back support. These platforms are only going to result in a bunch of slouching, anti-social uncomfortable people. Do better. Like 90% of the people using this park are exhausted parents of newborns and toddlers. Give them the literal support their exhausted bodies need.
- The plan is unclear about what the plan is for the field house. The reference to "ex-field house" is very concerning as it suggests that the field house will not be maintained (or could be demolished). This would be a travesty.
- Trying to cram in too much in this already small space is misguided.
- Adding the trees and seating intended for the town square to the landscape details here would be a much better idea.

- I'd like to ask that there are a large number of trees in the southern section of the patio. Shade in the summer and having green space will be an important part of the design for my family.
- Circular seating looks cool but not really functional. No one will sit there for long, hard to sit for any amount of time to read and definitely can't eat there.
- The design is great but I strongly suggest the skateboard area be left out. These are dangerous and too many people get injured while skateboarding. Let them go elsewhere to break their arms!
- While the feature bench and circular seating platforms appear are interesting neither seems to be practical in terms of providing back support for people sitting for extended periods of time.
- What is a 'skate-dot'? Whatever it is, there isn't a lot of room for it. 2. What are the plans to relocate the Farmers' Market during construction? 3. Geothermal?
- More trees for shade, please!
- The circular benches are cool, but could they have a central backrest? so people can lean back? These are good for perching, but not so much resting. It is also unclear from the rendering if the feature bench will be chaise lounge style as the actual sample photo. I LOVE THE CHAISE design, and hope the feature bench will be like the picture, and not just chair style seating.
- Concerned about bike parking. Is this the only bike parking area? Why so far from main building. Security/theft concerns based on location of bike lockup. Is there enough bike parking?
- The "skating dot" is short and not substantial enough for those who skateboard. What prevents skateboards from skating along the north continuous bench and potentially damaging it? I suggest eliminating the skating dot or provide a different feature for skating boarding.
- I'm not sure where this comment should go but I'm hoping there will be a bridge connecting the park to the expansion of the West Toronto Railpath - like the bridge at Dundas West, north of Glenlake.
- Concerns over potential noise/disruptive impact from the skate dot on the square and park facing residences on Wabash.
- Shade options (trees) for the north seating area and again - please provide seating with back rests as well - depending on age and/or physical health it can be very difficult to sit with no back rest
- Are the steps/stairs necessary (vs. a sloped grass area or ramp)? It's a park and stair features would seem to detract from it if they are not necessary
- Why is the shipping container not in the scope? It's a shame not to have something integrated into the larger scheme.
- Include more places to sit and eat food for the market days. Circular picnic benches perhaps?
- Circular seating options are unfriendly for people who need back support. Consider moveable furniture similar to Love Park.
- I like the idea of the circular social seating but not having a back to the seating can be uncomfortable. It could be beneficial to also have seating options within the tree grove that have backs.
- more shade and trees please
- Native fruit/nut trees would be an exciting addition where possible, given the farmer's market program and infrastructure for harvesting and distribution.

- where are the picnic benches?
- Feature bench is somehow an overwhelming feature of the scheme and seems to create a barrier/separation between the park and the square. The transition between the park space and square could be more natural, more subtle. Being able to walk down the slope directly should be encouraged. Also, in the winter, small kids have been using the slope for sliding and is a positive feature. There is maybe a balance by keeping the western portion of the bench but removing the part at the sloped area to the east.
- The feature bench looks quite nice as does the circular seating, but the bench looks quite deep and the circular seating doesn't provide back support. I don't think these should change, but feel like some seating with back support for those that need it would be beneficial in the town square area.
- Some flowering trees would be good: redbud, honey locust, linden etc. it's good to include scented plants for people with visual disabilities to enjoy the park.
- I like the long picnic tables in theory. They look nice but having shorter tables in a line may make it easier for different groups to use the same spaces without fighting or disagreements
- Ensure adequate bicycle parking. During events like farmers market it can be hard to find.
- Please build in QUALITY during all design work to use materials that won't degrade in 2-5 years it should last longer as this will be a very popular park to use by the local and incoming communities
- Looks like it could use more trees for natural shade. Entering warmer climate crisis era.
- It would be nice to add more trees
- N/a
- Inadequate bike parking. Current bike parking in the town square area is insufficient for demand and this plan does not remedy this problem
- Métis beadwork paving: during the inevitable process of value engineering, hope that the paving stone 'pixel' size stays small enough for the concept to keep visual integrity when viewed close up.
- More comfortable seating that includes back support.

Question 41: Please provide your suggestion or comment about how to improve the vehicle parking and drop-off area:

Answers:

- I think you should have at least 3 accessible parking spots
- I would prefer a circular designated drop off for better safety and flow of traffic. Like the drop off circles common at schools.
- Not sure that staff parking should override public parking- especially people who may need handicap parking spots. Why would the city be responsible to provide staff parking when they should encourage TTC... 7 spots is already minimal and staff, arriving first would use up the spots for the entire day.
- I don't think there should be any parking except for accessible parking and Vehicle drop off and pick up. This area is already overcrowded with traffic so adding opportunity for parking is going to be a major issue. If patrons can take transit to this space then so should staff be able to do that speaking as a city staffer myself.

- Unfortunately it looks like the design has created what I'd call a "rape trap". There appears to be space that would not be visible from Wabash. The brick wall is potentially concerning as well. Have you considered site lines / visual permeability from the sidewalk/road? If I wanted to do something shady I would choose around the area designated for loading. Please consider at a minimum installing security cameras there or other deterrents if the design can't be changed. Consider evaluating that space a Crime Prevention Through Environmental Design and feminist planning lens.
- I will walk or bike to the community centre and not use the parking. But I'd be curious about what the sight-lines are from the road to see if there is available parking or not. I can imagine this parking lot being a bit of a nightmare with cars pulling in and needing to get turned around, in an area that will have lots of pedestrians
- I think vehicle parking should be deterred and only available to staff or accessibility needs. For public use parking spaces should only be for drop off and pick up
- Suggest vegetation removal around blind corner of Wabash and Macdonnell. It can be an unsafe area for cyclists and I worry with more traffic from the community centre it will become worse.
- Not sure this is enough parking. Again parking is tight in the neighborhood. It is going to make it a challenge for the people who park on the street
- Like to see more parking spaces
- Some of the parking spaces should include pay for use electric vehicle chargers.
- This is not enough parking. I know the locals will walk, but others coming from more distant communities (Junction, Mount Dennis, etc.) will likely need to drive, especially for kids activities.
- Please keep parking to a minimum to reduce traffic for those living nearby.
- I am concerned about the amount of traffic this will bring. Macdonell/wabash/wright is already overstuffed and cars constantly drive along the sidewalk of macdonell between wright and wabash, which is dangerous for kids/pets/pedestrians. This has been raised repeatedly with the city and they have done nothing. Consideration should be given to changing the traffic patterns for that block of macdonell between wright and wabash, including potentially making wabash and macdonell a dead end rather than a 2 way thoroughfare .
- No staff parking!!!! Very central location, we do not need to accommodate cars in this space. If parking is insisted upon for staff it must be paid parking. This is a park and Rex area! No need for vehicles except accessible transport.
- Will there be an entrance into the building off the west side, facing park?
- Vehicle parking is unnecessary considering anyone can park on the north side of Wabash. There are ALWAYS spaces available on the street. Parking for 7 vehicles takes up too much valuable space!
- This proposal needs to look at broader circulation issues on Wabash and Macdonell. Macdonell is currently not functioning as a two way street south of the factory and is only going to get more dangerous with this project!! You need to make Macdonell Ave a one way street and create a roundabout at the end of Wabash or you're going to create more problems in an already problematic area.
- More solutions for parking/drop-offs should be brainstormed. The driving and street-parking in the area will likely become very congested and may pose danger to pedestrians, children and dogs.
- I don't believe there should be ANY car parking on the site. People should be encouraged to get here by other means. Devoting public land to car storage is a def no-

go in my eyes. We should do all we can to dissuade visitors or staff from taking their car. I find it an outrageous suggestion to have any parking on what could be green space.

- You should show a circle in paint or some other demarcation for the PUDO area as if it's just left as large asphalt it's going to be a free for all. I would also suggest you remove the parking spaces with the exception of staff parking/accessible spaces and make them short-term pick-up drop-off spaces. Most people in the neighbourhood live close enough to walk/bike and with so few spots, it's almost worse. Plus there's street parking.
- There needs to be more parking available. There are many people who are unable to bike or walk to the centre. The parking need not be on site but consideration must be given to this issue. We live closeby and even now there is frequently no parking anywhere near our home due to visitors going to Sorauren Park. Particularly as Seniors this has become a major disruption..
- The parking area and side entrance is very secluded and hidden from the street. There will be a lot of graffiti and other issues
- Remove the garden and put in more parking. Street parking is already very challenging in this neighbourhood and will be made significantly worse if suitable parking is not provided at the community centre.
- No car parking preferred . Accessible parking should be on the street. Provide covered Ramps for wheelchairs . The staff should drive to work if you are saying it's a pedestrian / bike based community
- Security risk to have the wall between Wabash and entrance. No visibility from street makes that spot dangerous.
- I love the approach to parking. It encourages active communities while also ensuring access for everyone (including those who rely on vehicle access)
- Will there still be street parking along Wabash? The parking should be for staff only and not for visitors - no point fighting over 7 spaces! Parking during Farmers' Markets is currently very problematic, and having the community centre isn't going to improve the amount of illegal parking, double parking and near misses in the area.
- ensure large space for drop off and pick up of people with disabilities
- how to prevent staff working at the community centre from commandeering the parking spots? also how to prevent cars from parking in the turnaround area? perhaps a planting in the middle of the turnaround area.
- agree that spaces should be reserved/dedicated to staff who require them
- restrict the on-street parking along the length of the drop off area. Make it a no standing zone
- Please, please, please, look into traffic coming from Macdonell Ave - it is going to be really bad (and it's already bad now).
- the parking spaces should be metered. Please do not provide 'free' parking.
- Please provide ON STREET Parking with 2hr limits. MOST families don't bike in rain or snow or if carrying equipment. Would much rather more on street parking than a median. Perhaps more spots could fit if perpendicular as opposed to parallel on at least one side of the street.
- Vehicle parking and drop off should be a lay-by off of Wabash, rather than tucked in the residual gap between the rail corridor and the building. This area is a natural 'back of house' zone - the loading dock is appropriate. However with limited visibility to the neighbourhood and considering how far north this area extends, this zone feels very unsafe.

- It looks like this area will become chaotic without a more prescriptive vehicle flow built into the design.
- Remove all public parking. Provide only accessible parking and staff parking to discourage vehicle use and meet TransformTO goals. Introduce centre island to formalize kiss-and-ride “loop” for one-way flow of traffic to eliminate dangerous turning.
- I am strongly opposed to creating a pickup/drop off zone, because the curbside of Wabash Avenue adjacent to the building entrance is in itself a perfectly safe and convenient spot to pick up and drop off users of all ages and abilities. It is unwise and inherently unsafe to create a busy driveway where cars go in and out very frequently at specific times of day (for example at the end of a programmed activity). Please consider scrapping completely the drop-off zone idea. From a transportation safety perspective the curb-side remains the safest place to do this. Whether we expect a big rush of cars or a small number of cars, the driveway is less efficient and more dangerous than curbside.
- There does not need to be a parking area, the community is well served by public transit.
- There is no need for parking, take public transit walk or bike
- Parking can be more efficient. 9 vehicle spots is low. This is the perfect spot for a “hidden” parking lot.
- Incorporate permeable paving
- There needs to be parking. The homes in this area are going to be overwhelmed by cars attempting to park on the streets
- I understand the need for future Staff to have dedicated parking, as well as the need for accessible parking for those with limited mobility, but I think there exists ample street parking which could be used by future staff members and there could definitely be a way to incorporate a disability-friendly layby drop-off/pick-up space on Wabash avenue. Less hard paved surfaces is always better - the proposed parking lot could be used for additional green space given the fact that this new building design reduces the overall greenspace of the park. There could even be a compromise to have 2-4 dedicated AODA accessible spots for those who need them to access the facility, but I really don't see the need for standard parking spaces given the ample amount of street parking available on Wabash.
- this is a good location for parking and drop off/pickup.
- Parking feels exposed; doesn't feel like enough accessible parking
- This area is notorious for cars doing u turns from east bound to west bound and cars often are speeding around from Mac Donald ave. There will be some added traffic easing required.
- I don't think space should be used for staff parking! Ridiculous
- two accessible parking spots is probably too few
- Parking for Sorauren Park has been an issue since the original park was created. Local residents are often unable to find parking when they come home and there is an event in the park. The community centre will exacerbate the issue. Despite the hope that people will use alternate transportation has not been the case for the past 20 years. If the median on Wabash was removed and angle parking introduced it would help.
- I am very concerned with parking as a 23+ year resident on wright, south of Wabash with no driveway and no lane way. Yes, the community is walkable but people drive and park on wabash now just to bring their dogs to the park. As a parent, I also know that getting to programs on time often means driving (I have been guilty of this myself,

driving around Mary McCormick so long to find parking I should have walked.). Also, that turn in wabash is a menace!! People come too fast both ways, entering a very narrow section where cars are often in the middle of the street oncoming. How will this danger be mitigated?

- Hoping again that this includes permeable paving
- The last thing we want is massive parking in this space - tight as it is. But I am concerned with the very limited drop-off, and the impact on local traffic flow. Such a community centre, long overdue, may have massive traffic implications, and there is little transit.
- Waste of amazing peace of land - cars already have a space to park.
- Why is so much space dedicated to parking?? If this is a community centre then should be walkable or get there by bike.
- Dedicate less area to cars, and more to greenspace. There is no need for car accommodation.
- Please keep parking spaces to a minimum.
- I am impacted by the market parking on Lukow as I pay for street parking and Mondays the visitors cars and vendors truck park on Lukow and double park on Wabash. Thus these are dangerous parking habits that are against the law and lukow residential paid for parking is unavailable to until 7:30 pm. This is not bring address in the community parking on Wabash and over glow onto Lukow again. I would suggest to ensure that Lukow residence that pay for parking on an annual basis go back to street specific permits as originally issued in 2000. Movies, markets, special events and new community centre will bring too many cars and added traffic to this two way sharp bend at Lukow /Wabash/macdonnell. Due to continued increase in traffic, events, condos, we need speed bumps or speed reducing ridges on Wabash and parking permits specific to annual Lukow parking permit holders
- Although we would all love to be able to walk and bike places, I think it's important to have more parking availability especially during events like markets if coinciding with other things in the community centre. I recognize it's difficult but more parking needs to be prioritized.
- Parking is extremely limited in this area and traffic is very congested (roads are narrow). How can people from adjacent neighborhoods access and won't it overwhelm local streets?
- I fail to see why even 7 spots (excluding the handicap spots) are necessary. If anything there should be more bicycle parking and/or more landscaping
- Increase number of accessible parking spaces on the site.
- People need outdoor spaces to stay as outdoor spaces
- How many of the parking spaces shown will be used up by Community Centre Staff on a daily basis. Will the island with the trees on Wabash be removed? Can we introduce angled parking on Wabash since its so wide? This would be great for the farmers market.

Question 42: - Please provide your suggestion or comment about how to improve the bicycle parking

Answers:

- I may have missed it, but i cannot tell how much bike parking there will be, and what kind it will be. I think you should have lots of bike parking and it should focus on rack styles that make it easy to lock up the frame of a bicycle vs a single wheel
- The more bike parking you can accomodate, the better.
- From what I see there is not enough bike parking. In out neighbourhood many families cycle together. We will need more bike spots. I think going to the style used in the Netherlands makes sense; two tiered lock ups.
- I hope there is adequate bike parking for all types of bikes: children's, cargo bikes (so many types in the neighbourhood), tricycles
- Adding shaded racks
- It's unclear how many bike parking hoops there will be, but the more, the better!! There's not a ton of street posts around that area as a back-up
- More bike parking on the west side of the park, where most people come from.
- Lots of bicycle racks. Maybe even prioritizing space that provides enough room for more bikes to be parked. Include a public bike and skate tool set would also encourage more bicycle use.
- Not seeing a lot of options for bike parking since the post & ring method only allows for bikes per post. Will there be a bike rack option as well
- More bike parking is needed, this appears to be similar or less than what is existing, which is currently insufficient
- Please ensure sufficient bicycle parking. Although racks can be obtrusive, they allow more bikes to be parked. An unobtrusive location for them might be to the south of the field house building.
- I hope there is lots of bike parking and that it safe to lock your bike and isn't too hidden.
- Would be nice to have a denser form of bike parking
- How many spots? I didn't see this listed... Add rain coverage if possible.
- Lots of bike parking required for farmers market.
- I want to advocate for lots of bike parking. We want to encourage people to take bikes instead of cars and don't want to make it difficult to find parking
- more bike posts
- There needs to be bike parking on the west side of the building because most people will approach from this side.
- Ensure you have enough spaces and that it's visible by staff to prevent theft. Also include indoor bike parking for anyone coming for longer stays who wants more secure parking.
- Lots of bike parking!
- The more the better
- Secure bicycle parking (enclosed units)
- no comment
- make sure there is lots of bicycle parking
- need much more bike parking
- The bicycling parking along Wabash is great. The bicycle parking between the 'reading garden' and the loading dock is awful.

- Hopefully there will be the City bike rental spots too.
- Ma
- I'd like to see the bike parking somewhat sheltered from the elements
- Ensure that there is an adequate number of bike spots and that the area has cameras to deter potential theft. It would be nice if more of the bike parking could be by the entrance as the side section is more likely to be targeted from the street.
- There doesn't appear to be enough Bicycle parking
- Just hoping there is ample bike parking as this will likely be a very popular means of getting to the facility.
- Based on site plan, it doesn't look like very much bicycle parking is provided. It would also be nice to provide bicycle parking adjacent to the town square.
- post and rings typically don't provide an adequate amount of bike parking. a full bike rack would be preferable.
- Loads of bicycle parking will be necessary for the community!
- There is not much car parking in the area so maximizing bike parking will be important as well as allowing space for family style bikes (ex: cargo bikes, small kid bikes, etc)s
- More bike parking
- Please ensure that enough bike parking is provided to encourage people to cycle rather than drive to the park. As it stands, bike space is limited throughout this and other Toronto neighbourhoods. Existing Sorauren Park cycling amenities were supported by neighbourhood and community fundraising, which was limited in scope. The city needs to prioritize bike parking in this design.
- Unclear number of available bicycle parking spots. More space efficient/esthetic options than post/ring? Security- need to have eyes on parked bicycles (theft ongoing concern)- ability to park Ebikes (given growing popularity in neighbourhood, plan for future)?
- Please consider how people will arrive at the centre by bike and plan for new bike lane infrastructure along the streets leading to the centre. Additionally, how will visitors from the West Toronto Railpath bridge extension get from a proposed ramp north of the building to the parking area?
- Should be something more secure, those post and ring structures are easily broken/vandalized and bikes are stolen
- More more more!
- The more bicycle parking the better. The posts all get filled up during the farmers market, with increased demand from the community centre more parking is needed than planned.
- Additional bike parking will be necessary given the already high bike use in the neighbourhood and the goal of having users access the site via active transit.
- Please be more specific about bicycle parking that will be provided. How many spaces will be provided? Where? Will they be in conflict with park users? As a cyclist, the relatively detailed information on car parking (location, count) and no detail about bicycle parking makes me feel that biking to the park is an afterthought to the designers.
- East side posts spacing could be cramped if the expected bonanza of bikes shows up
- People need outdoor spaces to stay as outdoor spaces.

Question 44: Please provide your other suggestions or comments about the eastern section of the landscape designs:

Answers:

- More parking. Very concerned about the lack of street parking especially on market days for the market vendors.
- The designers are trying to cram too much into an already small area. Please just give us the necessities without all the extras.
- The southwest corner is a dead end. The sidewalk ends at a patch of grass on the west side of Macdonell, you need to connect these for this landscape approach at the south side of the building to make any sense. Ridiculous that the city isn't looking at existing context and accepting these unsafe conditions.
- I'd like to see a path extend north from the drop off area to the dog park. I'd like there to be access not just from Wabash but for people to access the community center from the north and west as well.
- Seating should have a back and not be hostile to actual use.
- Having been a resident for 13 years here, parking is becoming an increasing problem here with the continued introduction of more condos and townhomes. I am concerned that this will draw even more cars which will take over spaces of residents who have to park on the street. Certain streets/areas around the neighbourhood should be re-designated as allowed parking (i.e. the northern blocks of Sorauren Avenue close to Dundas, where parking is currently not permitted between 7am-7pm from the old roof mart that was there. This is a condo now, large trucks are no longer turning in there during the day, and this block should be opened up to park all day to accommodate overflow from this new centre.
- I'm a bit worried about relying on bollards to keep street traffic separate from pedestrian traffic. Bollards in other parks are regularly removed and not replaced (in my experience), without a curb this leaves pedestrians vulnerable.
- Please include more evergreens so there is year round greenery.
- Will the loading dock be the garbage area also? The reading garden with tall walls and loading dock becomes a barrier between Wabash and the building entrance. Consider moving the loading dock to the north end of this area and providing more visibility from Wabash to this eastern area.
- This area is at a very high risk of vandalism and spray paint abuses.....I hope that some planning measures will address this; it's a real problem in this area.
- Flagstone is not accessible to wheelchairs/scooters
- More bridges across the tracks at various points including one to the drop off are needed.
- Now I see the benches.
- Will there be other entrances that face the North or west to access the building. The entrance by the railway tracks is not a natural path for most park users. In other rec centres they end up keeping all doors except the main entrance locked.
- I would like to see many more shade trees and private seating areas where one could chat or read.

- Design is very standard and looks low budget. Nothing inspiring or special - disappointing. Would be more creative and have some whimsy
- The seating, once again, looks very uncomfortable. Why not have seats that have backs or that our seats?
- It's critical we don't remove the free city street-parking on the side of the street along the park on Wabash Ave. It is already very difficult to park during market, movie nights, and days when the park is very populated for sports games. With this new building, more people will come and make it even more difficult to park. Please consider this also because most houses and buildings in the area do not come with an influx on private parking spaces.
- I'm concerned the curbsless street will be very easily confused for a bike lane. I like the concept, but there will need to be adequate signage to ensure that it's not treated as such.
- N/a

Question 47: Please provide your suggestions or comments about the proposed lighting:

Answers:

- Again, looks like overkill — it will be way too bright for the movies and FOSP's star gazing nights. Need to be able to switch some off when we need to. Also need lighting around the baseball diamond for the rink in the winter and baseball in the summer.
- It is important to have proper lighting for safety concerns. However there is also a condominium to the north (347 Sorauren,) that faces right onto this park and you need to make sure that the lighting does not impact them negatively at night.
- The lighting under the benches does not seem particularly practical.
- Some darkness is nice, we don't need everything to feel like the parking lot of a Walmart
- I hope that the "rape trap" area on the east side of the building (where the corner pocket is) will be well-lit.
- Is it possible to use lighting that doesn't increase light pollution but maintains safety like those used in 'dark sky' locations?
- Concerned about dark zone in the centre of the town square. However poles in this area would create a barrier to all the events happening in the area. It would be good to be able to access electricity for vendors and other events from the lights in the area.
- I live right across from the site so please ensure a balance between lighting for safety and lighting that does not overlight the residential units in the condo across the street - I am concerned the lighting will be too bright at night (disrupt sleep etc.)
- Taller poles will give more light and make it harder for kids to break the bulbs.
- Installing flood lights for safer use of the baseball diamond in the evenings would be great
- hoping the lower image is the one planned and not the upper, which looks a little too space age for a heritage redevelopment site, and also like the bulbs would be super hard to change.
- Ideally, install lighting that points only down and does not increase light pollution (admittedly somewhat futile, but good to do the right thing to allow some access to the sky)

- The designs and colours of the lighting features could be more bright and fun
- Please consider incorporation of environmentally-friendly options such as solar powered lights
- looks fine as long as it covers areas with proper lighting at night
- with increased light pollution in the city, it is important that these lights are down lights only. lights which cast too much light up and out are bad for birds and bats, etc. Minimal lighting should be used, simply to ensure safety. it should be dim, so as not to bother residents whose homes border on the park (as mine does to the west).
- I live at 347 Sorauren facing the park. Can you ensure that the new lighting will not shine into the residences facing the park? Thank you
- Would be good to see more lighting on the west of the new CRC building
- Please make sure that the lighting features are not directed at the homes that surround the park, and that care is taken to illuminate the park itself and not the surrounding area.
- I like the lighting plan overall, just want to make sure the park is well-lit as it is not now. I also want to ensure the lights will be LEDs as they are more economical and environmentally friendly
- Why is there only standard lighting in the off-leash area? I read this as evidence of my earlier comment that these plans are intending to push out dog owners who enjoy this park all the time. Do you remember the pandemic? Many people got dogs and especially in this area. The plan does not account for this fact.
- Dog area needs specialty lighting as well.
- If possible, add more lighting by bike parking to make safer at night.
- I find the under-bench lighting to be unwise from a maintenance perspective. Similar designs around the world have proven to be expensive to maintain or deteriorate quickly over time. It is also an unconventional way of lighting that will likely become annoying once the novelty wears off.
- the addition of string lighting over the market area, to provide additional lighting for night time activities
- under bench lighting seems a bit tacky and a very tired, early 2000s design move
- Incorporate solar panels to supplement energy supply
- under bench lighting is often too bright and creates an odd, space age effect that is not relaxing or pleasant to be around. hopefully this can be done in a way that's more easy on the eyes
- under bench lighting feels like extra cost that could be spent elsewhere; specialty lighting images don't reflect anything different to standard fixtures.
- I think that there are too many lights around the off-leash area. Not sure why there is a new light in front of the field house. Necessary?
- How easy/in-expensive is this type of lighting to maintain? Is this type of lighting 'vandal-proof'?
- Will this be solar powered lighting?
- It would be nice to have more light.
- The park needs better and more ample lighting around and in the dog park. The park is extremely dark at night and feels unsafe. I suggest specialty lighting inside the DOLA, and brighter lighting leading to the dog park. Lighting must be bright enough to see dog poop to pick up and the see your dog's collar clearly. Currently lighting in the DOLA is completely inadequate

- I hope the plans preferences orange-sodium style lighting over white-LED lighting to cut down on light pollution and to aid visibility, for while white LED's allow for a wider colour spectrum, orange-sodium lights allow for more detailed visibility overall.
- In floor up lighting highlighting plants, trees and rocks would be beautiful
- Good lighting is really important to make the park safe for women, especially in the winter when it gets dark earlier as it is uncomfortable for women going to the dog park when it is dark since the dog park is at the back of the park.
- The park needs to be safely lite due to night use for people and dog walkers while discouraging teenagers hanging around all night. Reducing temptation to graffiti, partying, and damages
- There does not seem to be enough lighting behind the Centre so could pose a risk
- Patterned lighting is inspired: consider one or two more posts for the dead zone on the north side. Under bench lighting: may have contrast issues if too bright; perhaps segmented instead of continuous (?)
- I would make two comments 1 - the 'standard' lighting should be selected such that it spills as little light as possible off the pathways / into the sky/neighbourhood (reducing light pollution) and 2 - the other specialty/bench lighting is wonderful, but money (and parts!) should be set aside for maintenance and service of these items - too often do lighting features languish, broken after initial installation with no maintenance / difficult maintenance, eventually turning a welcoming space unwelcoming at night
- I think under benches lighting will attract a lot of insects and will require a lot of maintenance
- Can we just have outdoor spaces?
- We don't really need the under bench lights. What we really need is better lighting on the ball diamond as noted in our email from May 23, 2023 11:08 AM entitled 40 Wabash Community Centre - Community Feedback from the FOSP

Question 48: Please provide your suggestions or comments about the proposed pathways:

Answers:

- I have some concerns about the pathway on the east side of the building. It will get used at night and may pose safety hazards. I hope the lighting will not create any dark pockets per above.
- no comment
- Is there a pathway to the skating rink? Lighting for skating rink?
- The path between the building and the rail corridor should continue along the rail corridor, connecting to Wabash
- I work in construction and find that in ground lights are not particularly durable and any above ground lighting would be preferred.
- There needs to be a connection to the centre from the east side across the tracks
- We need more outdoor spaces, not less
- The pathways will be fine if we can't get the OLA shifted up to the Metrolinx wall. One of the most important paths of all will be the one coming from the pedestrian foot bridge over the tracks. All paths north from the community center and town square should have access to this and not be blocked by the dog park.

Question 49: Please provide your other suggestions or comments about the landscape design:

Answers:

- more trees please and different paving
- I hope treed areas will have some amount of shade left during the night, to allow for bird life and nesting (if trees grow tall and bushy enough...)
- Dining tables and benches need shade. Trees, canopy or artificial.
- Better access to the dog park is important.
- Make lighting proper and useful overall so that at night all places important are properly light up via the lighting options chosen. Please make all walkways sustainable and not by Bricks which as we have seen on Roncesvalles it won't last the amount of time that it hit it. On Roncesvalles they are already replacing all the laid out walkways as the laid out brick work was NOT THE PROPER Choice. I would hate for this to occur here in Washburn
- The dog park is too small. You should be moving the pathway to make room for a larger dog park, or alternatively, creating a second dog park for smaller dogs on the other side of the pathway adjacent to the fence.
- N/a
- The OLA should be shifted to the Metrolinx wall in order to make the rest of the park and community center flow properly.

Question 52: - Please provide your suggestion or comment about how to improve the building façade design

Answer:

- Please no grey brick. Please add accent colour to the exterior to brighten up the exterior. Don't try to hide the building visually.
- The current design does not fit into the neighbourhood at all. It would be better if you could make the facade look more like the existing building that it is going to be attached. Also you will note that the condominium to the north and many other buildings along Spadina are much older and older factories that have been converted to other uses. I find the current design to be actually quite ugly. Why not build something in the spirit and design of the current neighbourhood in regards to all the converted factories. You should celebrate this heritage by honouring it.
- Windows on all sides instead of one dark wall
- Rooftop garden
- Current design looks like it won't bring in a lot of light. Consider different windows?
- Upon first viewing I found the strong verticals in the window treatment of the new buildings a bit overwhelming/too strong. Is there any way to provide a more harmonious visual link to the heritage part of the building? At the moment there isn't a harmonious flow between old and new.

- Blend in more with the old facade and surrounding buildings. Find more cohesive eco friendly design to replace fins.
- It is absolutely terrible, minimizes everything around it, will be out of fashion very soon, architects are trying too hard to make a statement as opposed to blending in. Needs more windows, less of a metal box - copying the planters in the area that people aren't using and just look like rusted metal boxes
- It is a bit uninviting and domineering. wonder if it can be a bit more friendly?
- I'm having a hard time seeing the colour of the building but if it's the purplish maroon I see it's nice.
- Dislike the colour, would prefer a lighter colour so the structure recedes more, appears less of a behemoth.
- please put affordable housing on the site! and/or market housing to raise funds for the public investments!
- I understand the design of the building and the purpose; however, the design does not suit the area. Would it be possible to achieve the same result with a more pleasing design?
- The design is too angular and modern
- Too modern and not aligned with aesthetic for this area... I wish the design felt like it could have been built in 1910 to give it a timeless feel
- The building design should not overpower the heritage building design - the building facade seems to overpower the heritage building because of the wings/windows. I like the sustainability considerations of the angled windows but the design is too loud/overpowering.
- The modern multi-glass design, and any area with large panels of glass, should be treated to prevent bird strikes and collisions. Please please please consult this wonderful group for their two cents and guidance. <https://flap.org/home-2-2-2/>
- Building can look a bit more modern and not brick color browns
- Please make sure it does not block the view of the CN tower
- It has no character and looks really out of place in our neighborhood
- The dark rusty colour is depressing and foreboding. A more welcoming is my preference.
- This colour palette needs work! Talk about bland.
- Maybe this will be revealed later, but I think maximizing the facades roof space with a rooftop garden/eating area would make a lot sense.
- N A. Looks great
- Can we please provide sufficient budget for a façade that will include materials that last - stone/masonry/terracotta before metal. No EIFS.
- View from park is amazing. Railside view is only okay but I imagine that's in keeping with the original building.
- Ensure you're building design is within budget. It looks beautiful, but often times cost isn't taken into consideration at the design stage, so be careful you don't overpromise.
- More trees
- It would be wonderful to use the existing linseed oil funnel as part of the reading garden as a public art piece. It is a significant visual reminder of the building's history and purpose.
- Potentially add a rooftop garden area if that is a possibility. It could also be good to include some more brickwork and warm colours. This Glasgow community centre celebrates original details (like a piece of old wallpaper) which is a cool way to honour

the history of the space: <https://www.dezeen.com/2022/05/06/kinning-park-complex-renovation-new-practice/>

- Nice survey. No questions about whether one likes the building but 10 questions about parking! The top of the building looks ridiculous as a merge of design with the old building. That is all.
- Would prefer a more heritage design that fits into the neighbourhood instead of this brutalist modern spaceship eating a building.
- Lovely to try to save some of the old linseed oil factory, and retaining the stack makes a lot of sense visually. That said, I am terrified of trying to save much else from the old facade. The building is in horrific shape.
- It looks like a prison. It's very oppressive and looming over the space.
- my impression is it has aspects of MCM and Industrial. So well done. Style is bold not milk-toast. i love it. Now you have done enough engagement, build it faster.
- Its currently too dark and imposing. It feels very Dr. Evil. A lighter brick/siding to match the heritage building would be in better keeping with the other brick structures in the area. This structure is also very imposing at this height. This will block my view of the CN tower and skyline, which I currently have from my porch.
- It might be the renderings, but can't tell if the materials are modern. This is a bold look that only works with contemporary treatment
- Are those panels reflective, and if so has there been consideration to how that reflection will bounce light on to surrounding residences? The buildings are quite large stacked boxes, some gradient of colours or shades of cladding materials could help make them look less massive and boxy.
- boring, uninspiring
- It looks like a giant shipping container or an air conditioner. It is way too imposing and will dominate the park. I was hoping for something light colored with windows that would blend with the park and skyline. This is really ugly.
- the wood things are so ugly it looks so bad make it brick or something
- The massing of the two blocks and large fins are overbearing and insensitive to the scale of the existing building and surrounding neighbourhood. The material looks to be metal, uninviting, prison-like. It's reminiscent of oversized mechanical louvers. There is significant mass timber on the interior, consider mass timber on the exterior.
- Looks amazing
- I would suggest using the word, historical rather than heritage which carries a colonial connotation. Or, seek the advice of the Indigenous communities you are consulting on this plan and design.
- perhaps the sections vulnerable to spray paint vandalism can be treated with a different material to make cleanup easier or more effective; it will most likely be a weekly occurrence
- Honestly, it's visually unappealing. Very stark and 70s, and it doesn't fit with the atmosphere of the park and the existing buildings. Something more industrial that follows the lines of the original factory would work better.
- The building appears to be quite massive. I wish for some kind of partition to break down the massive corpus into smaller proportions.i like the fins to control the sun rays
- The non-louvred windows facing north don't seem integrated into the rest of the design.
- I understand the energy efficiency of the fins but it looks like it would make the interior of the center quite dark.

- The building would benefit from some form of art or pattern to break up the boxy monotony of the design.
- Have more ambitious form ideas. These stacked boxes are so boring.
- Facade design suggests the building could be a contemporary art gallery. The aquatic centre and gymnasium town-square facing facades are fairly solid, and don't give the community a sense of the internal programming. Where possible, keeping in mind glazing ratios, it would be nice to provide more expansive glazed areas to create a more inviting facade.
- I find the structure very industrial looking and not organic enough. All hard angles. Some rounded design elements would soften it and make it less austere and able to stand the test of time more easily.
- The materiality is off. I don't know why you wouldn't match the brick/cladding colour of the new building to that of the existing building. Just looks out of place with the current design.
- I love how the facade is designed for energy efficiency, but I find it unattractive. It looks like a giant floor grate
- the exterior surface of the new building components should more closely match the brick of the existing heritage facade.
- Fins feel overscaled and heavy. Consider some delicacy to the facade
- The facade is much improved from the one presented in the past. It is sent I've to the existing building, to the surrounding context and is yet very contemporary. It is a building I would be proud to have in my neighborhood
- This is a big community center, so its look is going to be somewhat imposing on the park.... To the extent possible, design choices/materials that minimize that imposing nature would be welcomed
- why is there such a big blank wall facing Wabash? Isn't that cutting down on natural light inside? Doesn't seem to match the existing factory in color, either.
- It's terrible, full stop. It's out of scale with the park. And the fins are out of scale with both the building and the park. The design is better suited to a large office or academic building, not a relatively small community centre. It's derivative of other (larger, differently sited) projects, lacks thought, and on top of all that doesn't work well with the existing building.
- This question should be eliminated from the questionnaire. As a design professional, design by committee results in generic / distilled design. Let's leave the facade design to the professionals hired for the job! Not everyone has to have a day in everything. I'm sure the architects are qualified enough to decide whether or not the facade design needs improvement. Do we ask doctors how to improve their surgeries? This needs to stop. Thank you.
- Too bad you are taking out the climbing trees on the hill. It's a big part of the neighborhood which was degraded when the lower limbs were removed.
- I think the vertical shutter things are too visually heavy and should just be plain windows. You can even use coloured windows like OCADU's main building
- I am not an architectural design expert, so not sure I have specific improvement ideas. It seems "fine", if slightly Stalinist as a hulking box in the spot. Perhaps further thought around the louvred aspects to make the building more inviting and less intrusive. However, I am not opposed to current design - just think we could do better.
- Less boxy and linear - too large overall

- In the early stages of community consultation, residents were shown some very striking designs as alternatives to preserving and expanding the original factory building. These designs paved the way for community enthusiasm over a more modern and possibly more effective approach to the design options. I recall some striking buildings with green glass areas that were shown as projects built elsewhere in city parks. This design appears to have nothing in common with the ones we were shown as examples of what could be built at Wabash. It looks like something built in the suburbs in the 1950s..
- Recreate/preserve the ghost sign on the original building to tie back the heritage aspect of the building and surrounding area
- A bridge from the east, connecting Sorauren / Wabash to the Railpath, should be incorporated into the north building design. I.e., architects should consider whether the bridge should 'land' first on the roof of the building, with an upstairs entrance added, before ramping down to park level. This kind of creative consideration could benefit the community centre, pedestrians and cyclists, and lessen the impact of footings in the park / off-leash area.
- Hard to imagine without being inside, but feels dark and ominous.
- Black siding not brown - also use of true materials not synthetic;”: timber, glass, stone, metal
- I love being able to see the CN tower from all points of Sorauren park. It's a special part of the park and I worry the building design is too tall and will both block the view and make the park feel small and less green.
- Looks old, like it was built in the 70's should be more modern looking
- The colour over all is ugly- need more modern colors , even more colorful so it stands out
- It would be nice to see a bit more green- a community garden would be nice- or something more like Bricks park-
- It is dark and closed off: it would look open, airy and bright, both inside and outside, if we saw more windows and the facade were light in colour.
- It's pretty blocky and vaguely brutalist which doesn't really flow with the neighbourhood that features a lot of older and century homes. It would be nice if it included more windows.
- Lighter colour. Contrast between fins and walls is too stark. Suggest brick walls to complement and tie in with the factory section.
- More trees!
- More colours please
- The building needs more light, openness, bigger windows bringing nature in as it looks modern but like an institution not a healthy open space from the outside
- Incorporate a living green wall and/or rain collecting barrels
- Thank you for spelling “façade” correctly!
- Less of this industrial cold and harsh look, more of a nature relaxed vibe needed
- How about we keep the outdoor space and encourage more outdoor recreation?
- Like the retention of some historical features but the facade otherwise brings to mind a 1970s era library. Would prefer to see something brighter and more innovative though I understand that this can be personal taste.
- It's visually unappealing and destroying a historical site

Question 55: Please provide your suggestion or comment about how to improve the design of the lane pool

Answers:

- Hoping that you have a stair access to the deeper pool- some people can't use the ladder.
- No chlorine in the pool please. We need a healthier alternative. Salt water?
- How about a small seating area for parents/caregivers who don't want to swim to watch their kids?
- I would love if this was a warm water pool.
- Larger climbing wall.
- I would really like the lane pool to be a warm water pool like the one at McCormick Rec Centre. I would also like to see a sauna included in the design.
- Make the shallow end a bit deeper. Makes turning when swimming laps easier
- It would be fun for free swim sessions if there were more elements to play with like a diving board/platforms.
- My family would like to have access to a heated pool.
- Please make it a salt-water pool (to avoid chlorine water damage to people - esp. children - with sensitive skin)
- 8 lane pools are typical for competitive use. An 8 lane pool would attract the hosting of swim meets. The city built the Donald D Sommerville pool thinking it would be used for international competition and it was built 1 m too short and never used for swim meets. Such a shame!!!
- Preference would be for a longer lane pool (50m) and elimination of the leisure pool
- Please make the lane pool as big as possible!
- size of toronto pools like landowne
- will the pool be heated?
- Propose that the lane pool have warmer water.
- The architecture is bland and unresolved.
- thanks for including a lane pool in the west end!
- As someone who works in aquatics, the climbing wall is not a good idea. It would cause arguments between patrons since it can only be used by one person at a time. It is liable to cause injury to patrons, because they would stand next to it on the pool deck and start climbing on it from there, slipping and falling. Staff would be pre-occupied ensuring participants do not injure themselves on the climbing wall, and the quality of supervision for the rest of the pool would be impaired. The list of concerns could go on. In writing it's mentioned that this climbing wall exists because of lack of space for a slide, but I would argue that the pool doesn't need a climbing wall or a slide at all. It's unnecessary and hazardous.
- Feels like it will be dark? I think of the beautiful Regant Park pool and wonder if there's anything that can be learned from that?
- Could this be heated? (Similar to JCC at Spadina)
- Has saltwater-vs-chlorinated water been explored for the pool areas?
- Keep it an outdoor space.

Question 56: Please provide your suggestion or comment about how to improve the design of the leisure pool

Answers:

- Climbing wall sounds dangerous. Will kids fall on each other? Will additional staff be needed to supervise?
- Size seems small as I think this will be a very popular place. Is there opportunity to make it bigger and/or have more activities for little ones? Lazy river, wave pool feature, waterslides, hot tubs
- How about a small seating area for parents/caregivers who don't want to play to watch their kids?
- It would be nice to have separation between the lane pool and the leisure pool so that those swimming laps will not be bothered by children
- More than one play structure (ex. 3 in 1 bucket design). Ex. Splash pad behind Charles G Williams park has many features.
- It seems that the 'leisure pool' is geared towards children. Where can adults have a leisurely swim without buckets of water dropping on us?! I'm hoping the lane swim pool will have hours for adult leisure swim, otherwise it doesn't serve us all very well.
- There needs to be a slide structure for kids. See Pam McConnel Aquatic Centre <https://lh3.googleusercontent.com/p/AF1QipN9a7yZdol4pzPx1nfy-PW0UFJ7PhTrbeLAWFrU=s1360-w1360-h1020> or Douglas Snow Aquatic Centre - Willowdale <https://lh5.googleusercontent.com/p/AF1QipPuxVgW8YLDG3eOfxp9lvWMcDjxohLHbKR040h>
- There is already a triple bucket dump across the street at the splash pad. The umbrella with water pouring over would be better. And bubblers in the ground.
- The leisure pool should be heated like the leisure pool at the Pam McConnell centre and also have more fun jets and bubble volcanoes like the Pam McConnell centre. A wide stair is excellent because it gives toddlers a gradual way to explore deeper water the
- The leisure pool is too shallow for adults to swim in. It should be 3-1/2' to 4'. Anyone shorter than 4' shouldn't be using this pool anyway.
- More fun things for kids - a slide, water guns etc
- Same as lane pool - plus do make it too shallow. Ideally it should be slightly deeper than the Central YMCA leisure pool for small kids to learn swimming.
- I would suggest that the viewing area be open to the pool so if you're child is in swimming lessons you can hear what's going on. You could even include bleachers/seating inside the pool area for parents if you don't want it open to the lobby.
- Leisure pool should not be only shallow. There are lots of aquatic aerobics that need deeper water.
- Please add a community sauna.. there are many great examples in Norway
- There could be more play elements and amenities to make it more exciting for kids - like waterfalls, a slide etc.

- See above
- Is this necessary or could we have a larger pool?
- Possible for leisure pool to be a warm water pool?
- Will this have warm water for kids/toddlers?
- Bigger
- I think I speak for all adults - this space needs a large jacuzzi/hot tub area for adults to enjoy
- Please consider removing the dunk buckets. These buckets will encourage horseplay and potential injuries in the pool. They also can scare toddlers and discourage them from learning to swim. The leisure pool should be focused on toddler learning and a relaxing place for seniors and those with disabilities. If kids want dunk buckets they can experience them outdoors at CGW splash pad park across the street. These buckets also take up a lot of real estate in the leisure pool which could be used for other purposes that are more relaxing.
- The architecture is bland and unresolved.
- Could this be heated? (Similar to JCC at Spadina)
- Has saltwater-vs-chlorinated water been explored for the pool areas?
- Keep it an outdoor space

Question 57: - Please provide your suggestion or comment about how to improve the design of the change rooms and washrooms

Answers:

- Number of showers seems very inadequate for pools of this size
- I think they should make the 2 change rooms smaller and have 1 female, 1 male and 1 unisex. Even though the changing area is private and showering is only with bathing suits, I still wouldn't feel comfortable. At all.
- Worried that people would be lined up waiting for change rooms and that showering is in universal space. Some of the older senior women need some assistance with changing which wouldn't be available when inside cubicles. Also there is never enough hooks for towels/bags to be hung while showering plus hair dryers placed at appropriate heights.
- I don't see a mention of pool lockers. Where will we put our stuff when using the pool (especially in the winter when we come in with boots and heavy coats)?
- Toronto is a northern cold climate, winter is long and difficult, we should have saunas or steam rooms. We should also have a place to properly shower without clothing on.
- Will there be any lockers? This is pretty crucial for lane swimming, as there is no way to watch your stuff. I see a few pages later in the survey there are lockers in the gym area...I hope the intention isn't to have swimmers use those lockers. Swimmers will be wet (i.e. dripping water all over the place), and it would be cold and unpleasant to have to walk around the building in one's bathing suit.
- No mention was made about lockers available in which to store your clothes etc while you swim. ie: Change and then where to store your stuff/lock it away?
- Gender based changerooms are preferred

- Will there be lockers available for storing keys, wallet, clothes, etc? Even if they're small.
- Is there space to store/hang belongings like towels clothes, etc while swimming. Are there benches along the wall in the change room?
- I don't like the non-gendered change rooms. A large gendered change room provides more flexibility for parents with small children as well as for anyone using the facility as the space can be small/cramped and users must remember to take all items bank and forth to and from lockers, etc. Flexibility and freedom of movement are limited w this system!
- I struggle to see how only 29 changing stalls will be able to handle the capacity. I see people using washroom stalls to change in, which is not a good design if that's the case. Respectfully, I think the traditional male/female open changing spaces are still needed with private stalls as options (maybe 10 of them instead of 29 for gender nonconforming individuals).
- Love the universal change rooms with private stalls to change in.
- I like the gender neutral options, but worried there won't be sufficient changing areas at busy times and will be difficult to clean so many spaces
- I'm happy to shower with my suit on but extremely uncomfortable washing my hair and body to get the chlorine off in front of an open public space. This feels creepy and absurd. This design will put pressure on the two accessible showers rendering them inaccessible for those who require them. Please rethink this plan.
- I would like to see a sauna and steam rooms included in these spaces. Huge health benefits.
- Having been at the Regent Park pool when it was emptied in an emergency, we found it worked terribly when full. It was only sized for about 1/2 capacity, but was pure chaos when a full pool emptied into the change rooms.
- Prefer mens and women's change rooms with separate stalls
- I believe having a gendered option is important. Some people are comfortable with mixed gendered changing spaces and some are not.
- The best option is three change rooms - women, men and family / gender neutral
- Please gender change rooms with gender neutral spaces as well
- concerned about sufficient capacity and potential for a lot of wait time during peak hours, upkeep with the individual nature of the stalls
- please include floor-to-ceiling doors on washroom stalls. it seems to be in the design and sacrificing that would be counterproductive in a day and age of fewer gender-based barriers.
- I know you need to accommodate all genders, but most people still are male or female. You can get more useful space if you provide specifically designed space for males and females.
- Do not AT ALL agree with genderless change rooms. There is just too much potential for abuse. How on earth will you ensure that everyone uses the private areas to change? How will this area be monitored to ensure that no abuse occurs? Do not agree at all with this.
- Only two showers that you could actually wash the chlorine off? That is ridiculous. Less gender neutrality worrying and build some womens showers please.
- One improvement is the addition of a small hot tub and sauna area. These have proven benefits and other community centres have had success with offering hot tub and sauna access.

- As a swimmer of > 45 years and a former member of the Canadian national swim team I have been to many pool change rooms around the world. Individual stalls take up a lot of space, slow down the changing process for all (people end up waiting for a stall to be free), they tend to get dirtier/have garbage left in them (perhaps it's easier to leave a mess when no one is looking), they tend to be cramped for changing and they make the change rooms feel cramped and not comfortable. The space would be better utilized and make changing more efficient/comfortable by having two separate change rooms (F/M) that are open spaces. PLEASE consider this! I've been swimming at the Aquatic centre in Collingwood and the woman's change room is continually cramped and out of space for the woman after a swim practice. Cubicles simply don't work.
- Thank you for the planned gender neutral change rooms. This is so good.
- understand this is most efficient. one thing though. i lane swim 5 days a week. it's common to rise your swim suit off to get rid of the chlorine that eats through the material otherwise. if we can't do that in the shower can you add a rinse station?
- In your pictures the changerooms have full height doors. Please keep that aspect :) as for showering, even if bathing suites are on, I don't particularly want to be washing myself in front of everybody - maybe there could be little barriers that stick out between the shower heads to provide some obstruction of view?
- Pleased with this new concept of organizing change rooms
- I'm concerned that 23 private stalls will not accommodate the volume of users during peak hours. This combined with universal change rooms will leave users choosing between waiting in line and changing in a public universal gender space. Suggest men's and women's change rooms with a small separate universal change room to avoid this issue
- Many families will be using these facilities. All change rooms to be family change rooms. Have a look at Regent Park and York Recreation Center (Black Creek) change rooms are a great example and works well.
- I totally support the inclusive nature of the change rooms, but the complete lack of privacy for showering (even in swim suits) feels odd and unnecessary.
- Additional non-gendered washrooms and single occupancy washrooms may be advisable.
- Why are there no sauna/steam rooms incorporated in this design? The health benefits have long been confirmed, the space required is minimal, as well, it serves as a space for community and conversation. They don't even need to be within the change rooms. Sauna culture is important to community members, especially since private residences in Canada rarely incorporate them. Please reconsider your design and offer this type of communal space in the building.
- I feel there are not enough toilets in both the pool and beyond. If the facility can host hundreds of people at a time, the number of toilets (approx 11 in all) seems much too low.
- In general I think the design tried to make a safe and welcoming space for all, which is very good. But I wonder if more than 2 universal change rooms with shower can be included? Public pull showers to wash off the chlorine are great, but still rather limiting for anyone travelling any sort of distance to the Centre. Would there be room for 2 more universal change rooms, not necessarily as large as the accessible ones, but with the same amenities? Also, I do wonder how converting the spaces that are not designed to be private into private ones during special programming is going to work... how often will there be women's only programming? Will it be open to all, or only by enrollment? Is it not just easier to have a dedicated women only space? In which case, you could

designate three areas—a men's, women's and universal change rooms? I'm not sure how it will work space wise, but it may take a lot of logistics of switching up spaces and putting up screens and taking them off out of the equation. Frankly, if I was a woman in one of those programs and relayâtes to behind some makeshift screens, I wouldn't feel very safe or welcome.

- Hoping for a family bathroom or any washroom to have a child-sized toilet. These are incredibly helpful to young families. Also the neutral change rooms sound very stressful and confusing. I hope very clear directives can be given for womens only spaces and for there to be a very secure space to change with my young children. Perhaps a very oversized lockable change room.
- Will the stalls be big enough for parents and their children to use together. I would be concerned that this may pose a challenge for parents with one or more children
- showering in bathing suits is not very hygienic. Having at least a few private shower stalls for a more thorough shower would be preferable.
- changing stalls partition should be full height above doors for complete privacy
- there doesn't seem to be a lockable location to store ones stuff. The only lockers seem to be on the top floor. If someone wants to swim they will end up bringing there stuff on the deck which will quickly get cluttered if there are no lockers available near the changing area.
- The architecture is bland and unresolved.
- I'm wondering what the thinking is behind providing only two private showers, and the other showers in a 'highly-visible public space.' Unless I'm misunderstanding something, I don't think the majority of people would feel comfortable with this arrangement. My personal preference would be for either: more gender-neutral but private showers, OR gendered showering spaces. Also, with regard to the outdoor access bathrooms, as there are not toilets across the street in the playground, it would be very helpful for people if these bathrooms are actually open to the public.
- With all the enclosed spaces will the cleaning be able to keep up. At Landsdowne pool the common change rooms were not kept clean.
- It is really great to see the use of universal space
- More private washrooms and more washrooms overall.
- Wouldn't it be better to have 3 change rooms, a single gender neutral changeroom and wo gendered changerooms. Would be a more effective use of space and allow for more people to change at the same time.
- Include infrared sauna for community wellness
- There should be male / female washrooms and change rooms - if you need anything else if that group it should be a third washroom for those
- It seems strange that you assume people will shower with bathing suits on. How are people supposed to come to the community centre to swim before work if they can't shower? I think you should consider adding additional private showers, 2 is not enough
- Only 2 outdoor public access washrooms is insufficient. Additionally, having them so far away and around the corner poses a safety hazard. A lack of washrooms is one of the biggest problems with the city and if the goal is to increase attendance to this park, which is not directly surrounded by businesses where people can go to the bathroom, this will be a significant detriment. I understand the challenges that come with maintaining public washrooms, but this needs to be a bigger consideration.
- I feel like no matter how many toilets you think you need, you need more! As a parent, and knowing how often public toilets ANYWHERE experience 'technical' difficulties, I

don't feel like 4 common toilets in the pool area (+ the 2 contained in private change areas) will be adequate at peak use times. The number allocated for the 'dry' wing seems a little low as well.

- More change rooms and washrooms are needed
- It is important to have a woman only change room so that women and girls feel safe and comfortable when changing. Have a universal, but also a female space that won't need as many private change rooms. I've been in the universal washroom at canoe landing for work events and both women and men coworkers commented on how uncomfortable it was not having single sex washrooms.
- Please add sauna, steam room and hot tub
- should not have grown men with access to women changing rooms for safety reason
- My husband and I would both like to be able to take individual showers with our suits off.
- While respectful of the concept genderless facilities, until society is ready for all genders to achieve thorough personal hygiene without clothes on in a group setting, the Centre needs more private showering stalls, or have gendered showering areas. Showering only with suits on flies in the face of provincial regulation to clean thoroughly with soap and water: "In accordance with the Ontario regulation on public pools, every owner or operator of a public pool must display a notice stating bathers must take a shower with warm water and soap before swimming." As noted in this report (<https://pubs.ciphi.ca/doi/10.5864/d2020-025>) cleaning of sweat, urine, and fecal matter is essential. This is not possible when wearing a swimsuit. Reduced use of soap could lead elevated levels of chlorine in the pool water, which is less than desirable. Also, this policy potentially discriminates against those in the community who may not have proper bathing facilities where they live, and rely on public facilities for complete personal hygiene.
- Design should take into heavy consideration ease of cleaning - the easier it is to access corners, or eliminating small edges in things like baseboards, etc will ensure the design lasts and is welcoming because it's more easily cleaned by staff. additionally, each changeroom would ideally have active ventilation connected to HVAC (as opposed to just some sort of passive grate)
- Keep it an outdoor space
- My concern is regarding the washrooms. It is unclear from the pictures how these will be designed. There should be male, female and all gender washrooms so that there are no cultural barriers to entry.

Question 58: Please provide your suggestion or comment about how to improve the design of the lobby or reception

Answers:

- Love the look of the lobby but its footprint seems so large in comparison to the activity areas. Would love to see more activity areas such as a turf for soccer/football, toddler play times, climbing wall, areas for gymnastics/tumbling, basketball, pickleball, etc.
- I'm interested in the display/even space of the lobby, and I'm hoping there will be some seating options that can be arranged there when needed, electrical outlets, perhaps small risers to act as a stage.
- Please include nursing room and prayer space
- There does not appear to be a plan for art in the space, I hope this will be a part of future plans and that it can be a space to showcase local artists
- Some type of food services availability would be welcome - coffee, snacks, but also support for those who may be using the space as a remote work space. Publicly accessible WiFi.
- More fun things for kids - a circular slide from top floor to lower, a climbing wall, more space for kids to run around and play (including equipment like climbing structures). We need more free indoor playground for families to use in this harsh climate.s in
- Hoping there will be more colours ..murals..on walls or ceiling...maybe a fountain..plants?
- The lobby currently appears to be a bit bland. I hope more of the light wood can be used.
- Is there no overhead natural light?
- The architecture is bland and unresolved.
- I think the floor is too dark makes the space feel heavy.
- Same comment as below
- The lobby area is showing a lot of open unused ground floor area, will there be seating provided for this area
- Keep it an outdoor space

Question 59: - Please provide your suggestion or comment about how to improve the design of the kitchen

Answers:

- Make sure the kitchen is accessible for access to the Farmers Market and external community events.
- Hoping the space is designed to have a warm inviting feeling rather than an institutional look.
- I can understand having some kind of food preparation area but not a teaching facility. Why spend funds on something else?
- It would be great if we can get a serving hatch in the kitchen that opens up into the town square.

- It would be great to see a kitchen that could accommodate small recreational cooking classes. With a neighborhood that has a strong local market of fruits and other produce it would be great to have a space that can also provide youth and adults programming on how to cook with the local goods. Which means increasing community kitchen appliance to accommodate more people.
- We have a brick oven that remains locked at all times by the Field House. Do we really need a community kitchen with high end appliances?
- Unnecessary
- Please add at least a commercial dishwasher to allow for using non plastic plates and cups
- Both of these spaces have very utilitarian designs. Don't feel like inspiring places to learn or spend time.
- The architecture is bland and unresolved.
- Seems awkward to have the kitchen space usable for 6 or 60 (+) people. Is there no configuration to allow smaller groups - i.e. more than 6, max 30? This could be a great hub for local cooking classes, wine tasting events, et cetera.
- i wish the kitchen was a certified commercial kitchen space - there are so many small food businesses that community members have started and having a space folks could rent out to use to prep food for things like selling at the farmer's market would be such an amazing add to the neighbourhood.
- Keep it an outdoor space
- The Kitchen should have a serving window towards the lobby.

Question 60: Please provide your suggestion or comment about how to improve the design of the multipurpose rooms

Answers:

- Hoping the room has many seating options and cupboards with good use of space that is inviting so it would be used more often. Not white washed!
- See above -- my main concern is there's not enough activity space for playing/working out/being active. Will these multi-purpose rooms be used for what the community needs and will use: more activity space
- Can we get a stage or some movable risers that can be assembled into a stage for these two rooms?
- Ensuring the rooms are fit to accommodate community events or host permitted events i.e. indoor movie screenings, crafting. Provide necessary electrical utilities (outlets and infrastructure) that can support these types of activities
- please make a big market space!!! free stalls!!
- Why not introduce one of the rooms to play room for babies and toddlers. It would be a great place for mothers to meet for support especially during the winter.
- I would love to see a stage be included in one of the multipurpose rooms. I run a local community choir and there are several other arts organizations in the neighborhood. It would be wonderful to have space for performances. Other talks could also be given.
- Consideration for increasing the number of multi-purpose rooms (perhaps using some of the lobby space) - these rooms are so helpful for the community and uses the space more functionally..

- Is too much space being used for these rooms?
- Both of these spaces have very utilitarian designs. Don't feel like inspiring places to learn or spend time.
- Please ensure there is sufficient wall space for universal and fixed AV equipment with large wall screens for presentations. There should also be rooms designed as a gym for indoor sports such as basketball, volleyball, floor hockey, pickle ball, etc.
- The architecture is bland and unresolved.
- Too large and impersonal - does not reflect the community
- Would love to see more energy put into these spaces given that they will host community events and meetings. Things like adaptable furniture, seating, more unique and varied ways to separate and reconfigure space
- Would like to have capabilities for art spaces
- Keep it an outdoor space

Question 61: - Please provide your other suggestions or comments about the ground floor designs

Answer:

- great design
- i find the small number of public showers (8) totally unsuitable for all users of two pools. I experienced the public (similarly open) showers at Centennial Pool, which were not definitely enough, leaving bathers waiting on the edges. I also did not enjoy the 'eyes' of all, and would prefer a shower area that is partially separate from the pool deck (it would still be perfectly safe.) I've also experienced shared ('dressed') showers at two olympic pools in France and found them quite dignified and pleasant (there were 16 showers installed on walls and partitions within their own space (following passage through a 'pediluve', i.e. foot bath, a requirement in all French pools,) and three enclosed accessible shower stalls (no mirror or sink or toilet, just showers.) At a smaller Toronto pool like McCormick, there are a total of 15 showers in three different changing spaces (male, female and family) and yet there are still bathers waiting to shower following sessions and classes. All of this to say I hope the number of showers can be increased!
- Maybe this will be in the upper floors, but it would be great if there was a quiet place to do work on a laptop. This could be for students or for parents to do some work while their kids play/take a class.
- Indoor playground would be beneficial
- the more public fountains & drink filler stations, the better
- Designs look good but disappointing there's no hockey rink
- The architecture is bland and unresolved.
- Washrooms- availability / accessibility from outside? Currently limited washrooms available in park (at night / winter). What will washroom availability be, during times when community center closed?
- Squash courts would be a fantastic addition somewhere in the building
- Please keep in Mind Family Change Tables for babies, toddlers as a new community Center this should be present in a Family Change Room NOT in the Ladies nor Men's washrooms it should be a separate room steam for changing
- Highly suggest adding a childcare or earlyON in the centre

- N/a
- A hot tub or sauna would be nice

Question 64: Please provide your suggestion or comment about how to improve the design of the fitness and dance studios (2)

Answers:

- These are great
- make them larger
- Incorporate gym equipment
- Agree sound separation is important. You want to be able to pump up the tunes during classes!!
- Please ensure a workout room with exercise equipment!
- 2 dance studio/fitness rooms does not seem adequate - perhaps consider another 1 or 2 studios?
- Dance barres in the dance studios. PLEASE!
- Include surfaces for sound attenuation
- Fitness room should have fitness gym equipment
- We don't need dance studios - squash courts would be much better - there's a huge shortage of squash courts in this city
- You mention dance and fitness, but what about indoor sports? There is no mention of indoor sports such as basketball, floor hockey, pickle ball, volleyball. How will these be accommodated? Will there be fitness equipment? Weights and cardio machines? We need some multi purpose rooms to accommodate these activities and not just one large gymnasium which has primarily been designed for basketball.
- This just looks like a dance or yoga room, and seems to exclude other forms of fitness
- preference for these rooms to be on the perimeter of the building, with corridor access along pool side. rooms sharing walls with pools are humid and smell of chlorine.
- The architecture is bland and unresolved.
- There should be more fitness and dance studio rooms and a gym rather than 5 multipurpose and storage rooms!
- There was hope and much discussion for a community performance space that would be included and accessible or even run by community groups. I am very sad that these discussions did not lead to that kind of creative space. I also recall a request for inclusion of artist's space that could be used by groups such as the Tibetan weavers, and am disappointed that no maker or non-physical artistic activities are included in the design.
- This community is lacking a large community gym - including a true gym would be ideal
- I'm just curious about why a weight room hasn't been incorporated into the design? I'd prefer to see a weight room and a multi-purposes studio room, rather than two of the same. (Although perhaps the weight room is on the next floor and I haven't gotten there yet!)
- For the proposed area it seems like it will be a lackluster indoor space. Keep it an outdoor space.

Question 65: Please provide your suggestion or comment about how to improve the design of the second floor multipurpose rooms (4):

Answers:

- I really feel like these could be dead zones and could be much better utilized as basketball/gymnastics/pickleball/climbing wall/turf areas. So many kids/toddlers/parents on parental leave/teens would use this
- Decrease # of multipurpose rooms
- Designing multi purpose rooms so they can also be expanded into larger rooms using moveable wall dividers. Also providing access to community technological services I.e. printer, computer, 3D printer
- Can there be a stage (either permanent or temporary) in one of the rooms? There are a lot of musicians in our neighbourhood! Perhaps they would put on free shows for the community if there was a space to do so.
- make one of the rooms for children or toddlers to play in and for mothers to meet.
- Reduce number of multi-purpose rooms. Enlarge dance studio
- Include surfaces for sound attenuation
- Multipurpose rooms already exist on the first floor. Preference would be for additional sports facilities. This may be a good space for squash given how busy the tennis courts are in Sourthern park
- Could a squash court be used in the one of the multi-purpose rooms?
- Not sure how these spaces will look as renderings weren't included.
- Once again, please define multi purpose. Will these include indoor sports? We need indoor spaces to encourage children and adults to play and learn other sports other than swimming, dance and fitness. Also art and music classes need to be considered for space, clean up, acoustics. We need multi purpose rooms to accommodate sports and not just rely on one gymnasium that will always be busy. For example, pickle ball should be played in multipurpose rooms. Or consider a second smaller gym.
- The architecture is bland and unresolved.
- Why do we need as many as 5 multipurpose and storage rooms...this community centre needs a full gymnasium and more fitness rooms!
- For the proposed area it seems like it will be a lackluster indoor space. Keep it an outdoor space.

Question 66: Please provide your suggestion or comment about how to improve the design of the second floor washrooms

Answers:

- Strongly prefer gender specific washrooms.
- With non-gendered space will the washrooms have full doors like they do in most cities in Europe?
- Prefer gender based washrooms
- Washrooms need to be private, not mixed gender
- Sorry - are the bulk of the washrooms now for everyone? Not everyone wants to use non-gendered washrooms, there should be options.

- Consider at least a couple of shower stalls for people attending fitness classes before work. If you don't change the aquatics shower design these people will have to put on a bathing suit to shower after their fitness class.
- Mens and Womens washrooms
- Can there be a WC that is accessible 24hrs?
- Less worry about gender neutrality and build some change rooms for women to shower and change.
- General concern about number of stalls to accommodate volumes in peak hours and no urinals
- I don't believe in gender neutral washrooms. Please keep them separate
- you didn't provide any images to comment on
- I don't believe 2 toilets will be enough.
- Intentionally not creating men's and women's washrooms is concerning on many levels. Erasing womens only spaces like a bathroom is unfortunate.
- Having non gendered washrooms is a good thing. Having only non gendered washrooms may be challenging to accosted needs of all genders and ages at the same time.
- The architecture is bland and unresolved.
- There should be more change rooms and washrooms...I only see 1 washroom in the design...definitely not enough
- I suggest two private washrooms.
- Washrooms again should be male female separate not gender neutral
- 2 washrooms doesn't seem like enough for a whole dance class to use...
- Women and girls need washrooms where they feel safe and comfortable and a single sex female washroom is important. Why don't you have a survey on what residents prefer - universal or single sex.
- For the proposed area it seems like it will be a lackluster indoor space. Keep it an outdoor space.
- Ok with the private washrooms. Mixed washrooms may throw up cultural barriers to entry. Can we not just have all private self-contained washrooms so that religious communities and shy teenagers have a comfortable place to use the washroom?

Question 67: - Please provide your suggestion or comment about how to improve the design of the second floor lobby and lounge

Answers:

- Just an opinion about putting some colour so it doesn't look like a hospital
- Lobby again seems too large, it looks very nice but I would like to see more usable activity space. Spray Lakes Sawmills Center, while very large and not the same, is a great center that offers so much variety for families in the community
- This space should include art that is representative of our diverse community
- The openness looks like it will be a very loud space. Needs more sound dampening for private conversations, groups congregating, et
- More plants and greenery
- I would like to see some booths that students could do work in or parents could work from while their child does a class

- Seating and work spaces for informal meetings, remote work, WiFi, and perhaps support spaces like a printing station or service?
- Again, where are the areas/structures for children to play in winter?
- It would be great if the lounge has some options for refreshments and snacks to stay energized before/after the fitness classes
- Wasted space. Could use an Early ON center or play center for young kids
- Suggest better use of this space to allow for other activities eg squash, badminton, basketball
- I like the curves in the lobby, it just clashes with the rectangular cut out for the stairs. Can you make this round please?
- The space looks impressive, however seating and other human-scaled elements will determine how successful the space is.
- Feature stair placement is poor. Too close to the window.
- please ensure to keep full height windows on railway side
- The architecture is bland and unresolved.
- Why do we need so much lobby space? We need more activity space and more washrooms and less multipurpose/storage rooms!
- More colors, happier colors
- this looks like a huge wide open space. include a corner cafe/retail space that local entrepreneurs can rent out quarterly or monthly or bi-annually?
- For the proposed area it seems like it will be a lackluster indoor space. Keep it an outdoor space.

Question 68: Please provide your other suggestions or comments about the second floor designs

Answer:

- Will there be space dedicated to individual strength training and cardio, i.e. weight rooms, and a room with different machines to work out?
- please put affordable housing on the site! and/or market housing to raise funds for the public investments!
- is there a walking/running track? for seniors?
- Corridors to studios and multipurpose rooms need to be spacious with seating. Parents and guardians need a place to sit and wait while their child is attending class.
- what ventilation considerations are being taken into account for either Covid safety or the next possible pandemic
- The architecture is bland and unresolved.
- Squash courts should be considered. Can double as multi-purpose rooms.
- Why is there no area for weight lifting???

Question 71: Please provide your suggestion or comment about how to improve the design of the gymnasium and/or locker room

Answers:

- Some full height lockers would be appreciated for long winter jackets
- I am not comfortable with gender neutral change rooms. Would strongly appreciate a women's changeroom.
- Looks great but I worry this is too small to accomodate the various activities. Why not make this space larger so you can accommodate a soccer game and pickleball, etc.
- Concerned that the main floor change room will be too busy if it has to service both these areas
- I mentioned this on the pool changerooms part of the survey, but I hope pool users aren't expected to use the gym lockers. Swimmers will be wet after swimming, and it would be cold and awkward to walk to a different floor to retrieve one's belongings.
- How far is it from the change rooms to the gymnasium?
- I'm confused. Are the first floor changerooms universal, but the locker rooms on the other floors gendered? Please clarify.
- please ensure there are basketball nets
- Please ensure a workout room with exercise equipment.
- Having change rooms on a different floor seems difficult to manage with the standard small Toronto community centre staff numbers.
- Are there enough change rooms to accommodate peak hours (after work children's swim classes + adults using the fitness rooms and basketball court and running track)? Seems like there might not be.
- if there are different fees charged for use of the gymnasium vs pool, it would make a lot of sense to have separate changerooms.
- One gymnasium to accommodate ALL activities (you named at least 6 activities in the description) means it will be really hard to get play time. There seems to be a lot of lounge/lobby space and not enough activity space for sports. For instance, High Park put 9 pickleball courts on the hockey rink and they are often in use. In fact on Monday evenings, every single court is often in use!
- Having to go up and down from first to third to use the change rooms is an issue. People will use the third floor washrooms to change in, staff will have to supervise this which could cause community friction. It makes it more difficult to supervise groups of folks who need supervision between the two areas as well (i.e. kids). People with mobility issues will be unduly affected. I think we will regret having this separation in terms of the overall function and usability of the gym.
- is that a running track over the gymnasium or simply a viewer gallery?
- Can the gym be divided into 2 to allow for more sports to happen simultaneously? Or alternatively ensure a multipurpose room is more easily turned into a second gym?
- i think there should be adjustable basketball hoops that can be lowered (by staff) to 8ft for children on each side of the court for learn to play basketball
- The architecture is bland and unresolved.
- Not enough changeroom space. combining with pool change room is not a good idea as the floors will often be wet leading to slippery floors in the gym.
- Again, just curious about the absence of a weight room

- Should be FIBA size - will it be available for renting? Gym space in the city is limited
- Those using the 2nd floor exercise rooms and 3rd floor gymnasium may want to shower properly which they will not be able to do in a swim suit.
- The mock ups and the footprint this project is supposed to take, it seems like the mock ups are pipe dreams or, this project will take up way more space to get anything near what the mockups suggest. So, keep it an outdoor space.

Question 72: Please provide your suggestion or comment about how to improve the design of the third floor multipurpose room

Answers:

- This may be better used as a toddler gym/tumbling area? Roncy/Parkdale has SO MANY BABIES
- Considering there is already a multipurpose room on a lower floor (including an audio-visual system,) could this room not be dedicated to indoor fitness (i.e. running + stepping machines, stretching + resistance machine, weightlifting etc..?)s
- It needs a kitchen.
- There seems to be a lot of space dedicated to AV equipment and viewing. Is the purpose of this community centre not to provide space for kids to be active? Why not use this space to promote physical activity? Our kids get more than enough exposure to screens outside the community centre
- Allow it to be easily turned into a 2nd overflow gym
- you asked for comments but didn't provide any info
- Why is there another multipurpose room. This should be eliminated and the exercise area expanded.
- need to see where fitness equipment is-treadmill, weights etc
- The architecture is bland and unresolved.
- The mock ups and the footprint this project is supposed to take, it seems like the mock ups are pipe dreams or, this project will take up way more space to get anything near what the mockups suggest. So, keep it an outdoor space.

Question 73: Please provide your suggestion or comment about how to improve the design of the third floor washrooms

Answers:

- I am not comfortable with gender neutral washrooms. Would strongly appreciate a women's washroom.
- Loving all the designs & very thoughtful approach to the centre. However, given the (wonderful) number of multipurpose/fitness rooms + gyms + pool, my fear is that there are too few change stalls. People will commandeer the washrooms on upper levels for changing which will be inconvenient for those who actually need to use the toilet/sink

(etc). Any chance you could squeeze a few more change stalls near those rooms? I know it's hard but please consider.

- I think there should be more washroom options so that the majority are not non-gendered.
- Mens and Womens washrooms
- There do not seem to be enough washrooms.
- Provide more than one washroom off of the locker area for the gym.
- you asked for comments but didn't provide any info
- The architecture is bland and unresolved.
- Please add more washrooms to avoid lineups.
- Need single sex washrooms so that women and girls feel safe and comfortable
- The mock ups and the footprint this project is supposed to take, it seems like the mock ups are pipe dreams or, this project will take up way more space to get anything near what the mockups suggest. So, keep it an outdoor space.
- Same comment regarding provision of private washrooms for full community accessibility.

Question 74: Please provide your suggestion or comment about how to improve the design of the north rooftop (larger)

Answers:

- It's not clear to me that there will be shade and I think some shade overbenches is needed (Ideally plant covered). I cannot tell how high the wall is. Have you thought about the potential for people to commit suicide? I hate to go there, but would hate more to see that happen.
- Please include shade component on roof
- Love the inclusion of planting on the roofs & making the area accessible to the public!
- this area needs shade
- This space seems like it is primarily for the green standard and not much beyond this. It would be good to commit to inviting community groups to be able to help tend these green spaces and for there to be at least some food production - even simple items like herbs. Beehives would also be nice. Due to this development we have been denied the opportunity to create a community garden in Sorauren Park so telling us that we have to use the ground level areas is not possible.
- where is the shade? no one is sitting or playing in direct sunlight.
- Can there be more seating and shade provided?
- I hope the city doesn't restrict these spaces from being accessed! Would be a great place to relax while waiting for activities
- Outdoor exercise area should have some privacy away from seating areas to create separation from the two activities
- Don't cheap out on this after costing, needs to stay
- the solar panels take up a lot of space. I would love to see that space redesigned to have a seating area with tables and chairs
- would love to see opportunity for allotment gardens

- Pls add some ping pong tables to the roof and inside (lobby area or wherever) would also be great. Need to ensure lots of rooftop seating, esp facing west for sunsets. Can you add a bar/cafe and maybe play/climbing structures for kids.s for kids
- My only comment is that it's nice to have access to washrooms/kitchen facilities right off a large rooftop terrace that can be used for events. May not be possible, but ideal.
- I appreciate the aesthetics of this design; however, as a mental health professional, I just see too much risk associated with rooftop spaces. Recognize my own bias, but have just seen too many untoward incidents related to rooftop areas.
- Make sure the seating is not too far east, or blocked by the building, to see the sunset. Should be able to walk right to the west wall.
- Lovely. Costly to build and maintain.
- I am always sad when there is a nice green roof and there is no way to step into it and be surrounded by it. It would be cool to have a little pathway that ends in a circle so you can just stand in the middle of the green space. It would also be really cool to have stairs coming from the ground floor up to the green roof terrace so you don't have to go through the building to access it. Almost like an extension of the park.
- Ensure at least some shade. Ensure evergreens.
- This outdoor space looks like it will provide beautiful views of the surrounding area, but feels disconnected/isolated from the rest of the building.
- The fitness equipment shown will never be used. Can we consider a proper indoor fitness room instead with proper free weights and cardio machines?
- There should be more shade provided on the rooftop spaces, even if just pergolas.
- please ensure there are electrical outlets and proper running water access in the outdoor area of the roof to accommodate any special activities in the future and avoid running extension cords and water bottles.
- same as other
- It seems that it would be more appropriate to have the « people » area/viewing area, facing toward the park and activities as opposed to the train track side. I would suggest flipping the solar panel area to locate the viewing area on the west side toward the activities in the park.
- The architecture is bland and unresolved.
- This looks great and exciting.
- Shade???
- Consideration must be given to future bridge connection to the WTR. This requires coordination with Metrolinx. An opportunity to include the bridge heading west over the tracks in this otherwise very appealing design. Would need to accommodate pedestrians and cyclists flowing through the area; potential bike parking as well.
- As a property owner near by, I caution the “viewing” from the roof tops and perhaps careful consideration of the homes that the new roof top provides a Birds Eye view into their home! Is there a way to protect privacy of neighbours whilst making a nice roof top experience?
- Needs shade
- The mock ups and the footprint this project is supposed to take, it seems like the mock ups are pipe dreams or, this project will take up way more space to get anything near what the mockups suggest. So, keep it an outdoor space.

Question 75: Please provide your suggestion or comment about how to improve the design of the south rooftop (smaller):

Answers:

- It's not clear to me that there will be shade and i think some shade overbenches is needed (Ideally plant covered). I cannot tell how high the wall is. Have you thought about the potential for people to commit suicide? I hate to go there, but would hate more to see that happen.
- If it's going to be an event space, it needs to be bigger with shade and/or cover.
- The rooftop could be better utilized as a community garden space, where community members could have access to plots to plant their own garden
- this area needs shade
- where is the shade?no one is sitting or playing in direct sunlight.
- Can there be more seating and shade provided?
- This needs to stay after value engineering
- would love to see opportunity for allotment gardens
- More seating for the city views.
- Looks directly into the back yards of houses across the street
- as above
- Make sure the seating is not too far east to see the sunset. Should be able to walk right to the west wall.
- Lovely. Costly to build and maintain.
- The south rooftop is going to be wayyyy to hot in the summer I think!
- Would be nice to have seating and a shaded area on the roof
- Provide a small area for sitting in shade. Ensure evergreens.
- if there's going to be a community gardenhipe there's water access. in a previous condi where I lived, the a hshotect for that small pont.
- The architecture is bland and unresolved.
- Wonderful
- As a property owner near by, I caution the “viewing” from the roof tops and perhaps careful consideration of the homes that the new roof top provides a Birds Eye view into their home! Is there a way to protect privacy of neighbours whilst making a nice roof top experience?
- Needs shade
- The mock ups and the footprint this project is supposed to take, it seems like the mock ups are pipe dreams or, thos project will take up way more space to get anything near what the mockups suggest. So, keep it an outdoor space.

Question 76:- Please provide any additional comments about how to improve the design of the third floor or rooftops

Answers:

- Make sure the upper track has good height - when running, etc. need height clearance.

- Add benches to the atrium area for people to watch the gym (through the glass) or to sit while waiting for their programs to start.
- There should be a great event space to rent for small weddings, parties, etc. The views are fantastic and it could help fund other things. There should be a kitchen for caterers and some shade, so people can enjoy the views while attending.
- Is there no weightlifting element
- please have wifi available in the common areas and roof top. ask one of the ISPs to sponsor it in return for some signage
- Are there elevators to reach third floor?
- Surprized that there is no running/walking track for seniors, or perhaps I missed it.
- Another court for kids to play ball sports (pickleball, tennis or more basketball) would be used more than so many multipurpose rooms. It's easier to find spaces/rooms in the city but not courts to play indoor sports.
- what are the proposed hours for accessing the rooftop? it would be nice to have shade options, such as a retractable canopy, for when it's hot during the day
- Very nice design, and gym looks nice with basketball court. Wish this center had a hockey rink.
- The architecture is bland and unresolved.
- LOVE the green roof! Just want to say rain storage would be cool too if possible.

Question 79: Please provide your suggestion or comment about how to improve the design of the stretching and conditioning room

Answers

- Will there be weights and weight machines. Weight training is an important part of any fitness program. It is particularly crucial to older women as it combats osteoporosis and keeps them mobile.
- Please ensure there are weights and exercise equipment.
- Will there not be more gym facilities, like weights, exercise bikes etc? This would be ideal, rather than just a running track and stretching.
- Would the conditioning room be a weight room? That would be important to have near the track.
- Could this area have some free weights and benches for working out?
- Will there be machines or weights available in the conditioning room?
- Please make large space
- Could put gym equipment in middle of track
- Need a weight room
- Does the conditioning room include weights?
- The picture makes it look like a very small space that can't accommodate 60 people for running and stretching. Can you please clarify with more pictures and more space for stretching and conditioning.
- There are no renderings - is this just another empty space for stretching/yoga?
- Please ensure standard height and standard design railings; this allows persons with mobility challenges and physical rehabilitation to hold onto something when they require it. A good example is in the York Rec Centre. Please refrain from using unconventional designs or unconventional heights for railings.

- you asked for comments but didn't provide any info
- The architecture is bland and unresolved.
- Could have equipment and accommodate group classes
- This proposed rec center seems like it will have a bunch of somewhat functional space. Trying to do too much in a small space. Keep it an outdoor space.

Question 80: Please provide your suggestion or comment about how to improve the design of the running track

Answers:

- Make sure there is good height clearance for running, jumping, etc.
- Round the corners of the track more if possible to maintain pace and minimize stress on knees.
- The turns on the track look pretty tight. Have we considered banking the turns or are we working with a track designer who can recommend the best option for a recreational track of this size?
- More information is needed about the length, surface, and anticipated purpose of the indoor track. There is demand for a proper indoor track for use by Competitive athletes in the neighbourhood but it sounds unlikely that this will serve that (or any meaningful?) purpose.
- The opening seems like loss of space that could be used for stretching, etc. Noise is going to carry. Also concerned about inconsiderate people throwing water bottles garbage, spitting etc over opening.
- Make it angled at the curves (see YMCA Central design)
- More track space!!!!
- How long is the running track?
- Run outside. In the winter find alternative to running. Swimming!
- finally found the running track 2 lanes seems very tight and doesn't allow for runners on the outside and walkers on the inside I suggest that 4 lanes would be more appropriate, but I realize this is part of a bigger puzzle. thanks for the opportunity to provide input.
- What are the track dimensions? Need to consider sprints, short distance, and longer distance track athletes. Need at least a 50 meter straight away stretch.
- A running track is essential to the design in a 4 season country. The risk of injury running outdoors or even indoors on a machine is common. Providing this indoor space allows a safer opportunity for runners to exercise.
- Please install standard design railings, preferably on two different heights. This can be tremendously helpful for folks with limited mobility or undergoing physical rehabilitation. A great example is the track in York Rec Centre; it has been super helpful for me and friends who needed to practice walking
- Isn't it going to be noisy?
- Just wondering why it is being planned as open inside the track when that space could be used for gym equipment for example?
- would like more information about track surface. make sure there is some notional design and thought into potential use by track clubs (permit use). this would require some decent turning radius as well as mondo surfac

- The architecture is bland and unresolved.
- I think the track should be two toned . One colour indicating walking , the other running.
- Overall looks good - but wonder about having another “lane” and reducing the open area? Also, safety issues with open area?
- Indoor running tracks like this are absolutely terrible for knees. The corners are far too sharp. the track can work fine, but the you need to have full 180 degree arc at each end, not 4x90 degree corners. I have run on tracks like this at Hart house and at Parkdale collegiate. each was terrible on the knees. This really needs to be reconsidered..
- This proposed rec center seems like it will have a bunch of somewhat functional space. Trying to do too much in a small space. Keep it an outdoor space.

Question 81: Please provide your suggestion or comment about how to improve the design of the fourth floor universal washroom

Answers:

- I think you need at least 2 washrooms in this area
- Please split this into two toilet stalls (with shared sink/etc) - guaranteed this will improve the user experience.
- 2 washrooms would be better
- There should be male and female bathrooms separately from one another
- This comment pertains to all universal washrooms. With the advent of non gendered bathrooms, women are once again exposed to the sloppy messy toilet haunts of men. Just sayin’
- Is there a possibility for more than one washroom?
- One washroom on this floor is inadequate.
- Locate the universal washroom closer to conditioning area/running track entrance. Current location between two mechanical rooms feels unsafe and not conveniently located.
- Could there be two bathrooms
- The one small washroom on this level seems insufficient.
- No renderings. Hard to comment on the design.
- An additional washroom stall would be beneficial.
- you asked for comments but didn't provide any info
- Is one washroom sufficient for this space?
- The architecture is bland and unresolved.
- Well we can’t really tell how the universal washroom is designed from this drawing because the legend number is covering the entire room. Is there a universal change table? Does it have the proper clearances? we can’t tell.
- Please build two universal washrooms, not just one.
- Separate gender bathroom is a must
- Prefer segregated washrooms due to under aged children and safety concerns for women and elderly /seniors.
- This proposed rec center seems like it will have a bunch of somewhat functional space. Trying to do too much in a small space. Keep it an outdoor space.

- See other comments regarding accessibility of universal washrooms to all communities.

Question 82: - Please provide your other suggestions or comments about the fourth floor designs

Answers:

- Need an event space with indoor/outdoor access and kitchen.
- What about a weight lifting area and other cardio equipment
- please put affordable housing on the site! and market housing to raise funds for the public investments!
- We need a fitness room with weights and machines more than a whole floor just for track. Also we need women only washrooms for safety.
- Any chance for a work-out space, gym equipment?
- Are there chairs in the lobby/atrium area?
- Is there space for a small weight/training room or machines?
- do we need this level? perhaps without the 4th level it will not impact the view for the neighbours as much.
- The plan doesn't mention where the changerooms are, but I'm going to assume that since third floor users are using the main floor changerooms fourth floor users will as well. Again, people are going to get changed in the washroom, it's more difficult for people with disabilities, people who are supervising others, staff who have to police washroom use.

Question 84: Please provide any additional feedback or suggestions about the building or landscape design, that you have not already shared in this survey

Answer:

- Might be too late, but an artificial skating rink in the winter would really be great for the community.
- I love the landscaping around the ceremonial fire pit. But you should be aware of the history of bioswales in Sorauren Park. There used to be one in the early days of the park (where the off-leash area is now). But it was a mecca for dogs; they all went in; many got sick; there were many complaints to the city; the city got rid of the bioswale. How do you stop the same thing from happening with the new bioswale? Certainly, on the Protocol Signage you should ask dog owners to keep their dogs out of the swale. However, many won't listen, so can the landscape features be designed as a barrier to dogs? On another matter, there are two storage sheds on the side of the fieldhouse facing the town square. Will those be kept intact? They are very important storage for the FOSP and the Farmer's Market.
- It's going to be great! Can't wait to use it. Thank you.
- A place to rent park toys and games such as croquet or baseballs would be great.
- I'm so glad to hear that you are keeping the chimney. Please consider keeping it accessible to Chimney Swifts, a threatened bird species in Canada. You may be able to

get funding for this: <https://www.birdscanada.org/about-us/funding-opportunities/chimney-swift-fund>

- Overall, I hope design considerations are being made to ensure that a variety of community recreational programming can be provided. A lot of the current programming for things like Arts, Cooking, Crafts, etc. is not accessible to residents in the neighborhood and areas of west downtown Toronto and this community centre could have that potential if the necessary facilities are provided. Additionally having spaces that encourage youth (ages 13-18yr old) to socially interact with one another is another reason to consider making minor adjustments that can provide spaces for them to collectively socialize in other capacities than just sporting activities.
- Overall I'm excited to see a new community centre built & bringing forward indigenous history in the community
- Please ensure there are accessible drinking fountain/bottle filler on both sides of the town square. The lineups during events (market, movie nights, hot summer days, etc) are long. Also, please ensure City of Toronto staff actually turn on the fountains on schedule, and maintain them in good working condition throughout the operational season. Please.
- PLEASE BREAK GROUND! This is the community centre my family and I have been waiting for.
- Just wanted to say thank you for all the work put into the design. It's going to be a wonderful addition to our community.
- Incredible design inside and out. I think this facility will serve the community well, thank you to the City for some much thoughtful design.
- please put housing on this site! social housing, middle income, and also boujie condos to raise money for the park and market and pool and square! thank you!
- important: you need to introduce shade for sitting areas. There is no visible shade on your design rooftop, gardens etc... Look at where people gather in the park. It's all under trees or shady areas.
- I'm very excited for this to finally be built! Looks great.
- My concern is strictly with the design of the exterior of the new building as outlined previously. Everything else appears to be well thought out. Thank you
- As a lifetime resident of the Roncesvalles neighbourhood, I am excited about this project. It's been a very long time coming. As a small dog owner I am very disappointed in the plans to make the off leash area smaller. This is a very heavily dog and kid populated neighbourhood. To some folks without children, their dogs ARE their family. They deserve a healthy space for their dogs to play. With so many people upset with dogs off leash in the on leash areas (because the current off leash area is disgusting) this plan doesn't feel like much of a solution. A small dog section would be very appreciated.
- We need women only washrooms for the safety of women.
- It's vital that the off-leash dog area NOT BE REDUCED IN AREA. 2. Access to snack food & drinks via vending machines is necessary. 3. We need more garbage, recycling and green bins throughout the entire outside areas of the park. 4. The timeline is utterly ridiculous! Residents have been waiting for 10+ years for this to be completed. The timeline means that we won't be able to actually use the park until 2029. Construction always takes longer than anticipated.
- You need to conduct traffic and pedestrians circulation studies, I'm not convinced either of these are going to work based on current conditions that will only get worse. What's the construction contract? CM this now so it's not 2030 before it's built.

- I would like to see a skating area for hockey and free skating. I think a heated pool is a high priority for our family
- would love to see spaces for allotment gardens
- two concerns: first, operational budgets that provide sufficient staffing (both paid and volunteer); given the size of the centre and anticipated use by a diverse community, this is very important second, security and safety -- I would recommend some security systems and CCVC; at a minimum, sufficient staff and volunteer training and support on security and safety
- Please consider Pickleball courts. It is the fastest growing sport in North America and there are no good indoor options in the West End at the moment
- The pool seems small.
- Please stop consulting the community. You are the experts and while it's important to consult, this is way too extensive and you'll never satisfy everyone. We need this community centre now and the longer you delay with additional surveys, meetings, etc. the longer it will take to build. So please start the process of tendering and building. Thank you.
- Seating should include chairs/benches with back support in addition to multi level staircase like seating.
- This is a beautiful design and much thought has gone into it. The only thing I object to is the genderless change rooms in the pool area. Otherwise, it's just great and cannot wait until construction begins. It's beautiful!
- Please stop consulting and start building. You don't need more special interest group feedback when you have had a mandate to build this for two decades. Please let the professionals that were hired to design this, design this. I also think that if you bulldoze the fieldhouse, it will allow for much better flow in the park (as the designers first suggested). To save the fieldhouse, which is not accessible, energy efficient or beautiful, is a waste of time, a waste of a great space and ultimately will cost the city more to bring it up to a useable standard. I know this ship might have sailed, but I had to mention it. No tears here if a crane happens to drop something on it.
- Better overall site organization. Doesn't consider existing uses or suggest how to mitigate the loss/change in current well used facilities. Uninspired design. No overall spatial concept. Left over spaces. Needs a stronger design move than just adding an indigenous layer. Building and landscape are not parallel in their design development. Needs more effort to ensure the public spaces are to the same well considered level of sophistication, and speak to each other in some way. Better and more trees. Planting in hardscape plaza not necessary for a park setting.
- It'd be great if the design meets Passive House standards for energy efficiency in buildings
- You should definitely consult with other Indigenous circles at the City before proposing a survey like this for the Indigenous community.
- Both the building and landscape designs are beautiful and thoughtful. I have been resident in the community for over 15 years, and it is amazing to see this finally coming together. That said, I am alarmed at the project creep that has occurred. This is now a massive undertaking, which will cost far more to build than initially anticipated and be very costly to run and maintain. Do we really need rooms where hundreds of people can gather? High end community kitchens? Two green roof gathering places? What we have always needed is a community centre, with gymnasium space, a swimming pool and some shared, multi-use space. I'm not sure we should spend untold millions of

dollars building and maintaining something this ambitious; is there a construction cost estimate, as well as an annual budget for running, staffing and maintaining the project?

- Looks gorg. Love every element. Now let's get those shovels in the ground
- really well done. would be great if you cut off this process and just build it
- Is there any way we can preserve the park walking circuit that people have become used to? Perhaps a path going through a semi-outdoor/semi-covered pathway through the building?
- Can we get rid of the baseball diamond? Takes up a lot of room. Sorauren Park is mostly used for soccer and for dogs. The baseball diamond is too close to the path and the street and I am sometimes afraid to walk as there are balls flying. There has been property damage to cars on sorauren. Instead, can we turn the baseball diamond into a small dog park for dogs under 20 lbs. this would remove a lot of friction in the park and make it safer for all. Thank you
- This is a wonderful project that I, personally, have been waiting for since 1998. It's very exciting to see it come to fruition and I hope I'm not too decrepit to use it before it is finished! I do worry, though, that it is trying to do too many things at once and that some functionality is being sacrificed because of this (yes, I am talking about not having change rooms where the activity is). Please have room in the budget to plant the largest trees possible when new ones are planted so that the landscaping doesn't take ages to fill in
- I am excited about this project and can't wait for shovels in the ground!
- Please add general space for young kids to play in winter months. Like an Early ON center or a small library or small toy room/craft room or music room for kids
- What are details Re: elevators
- Please do NOT GET RID OF on street parking. Not being able to find parking is a big deterrent to using a space particularly when tight on time or travelling as a family or with equipment. We need more evergreens in the space as well as winter is 5 months of the year. More court space for sports is needed rather than multipurpose rooms (rooms are easier to find, indoor sport courts are not).
- I can only re-iterate the mistake of reducing the size of the off-leash area. It will become a disastrous site of dog fights that children will hear and witness. And, to keep their dogs safe, dog owners will need to break the law and let their dogs off where it is not permitted. I suppose that would be fine if the plans can't be changed. But not everyone will want that of course. It will be the only logical solution for dog owners, in light of this plan, however.
- I hope this center can be built as planned. The design is extraordinary and has the potential to be one of the nicest facilities in Ontario...
- Firstly, I commend the thoughtfulness and effort out into these very modern designs that also keep the history and indigenous aspects of the space in mind. It has amazing potential to transform and represent the community. Is it possible for the town square to be able to accommodate an outdoor seasonal hockey rink instead of the baseball diamond? Hockey/Skating is still our national sport and we need make it more accessible for everyone and this would provide some help. Also, this project has been delayed several times and years in the making. We need to stick to the new timelines and get this completed ASAP for all the local taxation residents that have been patiently waiting without a community center for so many years. Mr. Perks, it's time to step up and make this a priority. I can appreciate you focus on low income community housing projects and recent immigrants, but please stop ignoring the local taxpayers who have not had a community center they deserve. Everyone will benefit from this project...low

income, high income, recent immigrants, long time residents, indigenous, people from all religions, creeds, all walks of life. Make this your legacy project Mr Perks and be remembered for building something for everyone!

- Where is the fitness centre/gym/strength training area?
- I think the thoughtfulness and beauty of the proposed designs of both the building and landscaping are outstanding. I am sure there are a number of varied opinions shared through a process like this but mine is one of overwhelming support. I work in the construction field and know of the consultants on the team to be absolute top notch and though this process is important I hope it does not water down the consultant's visions too much
- Please reconsider the 'flooring' in the off leash area. It really is a major reason there are so many dogs off leash at Sorauren park right now - the gravel/woodchips / no grassy / green covering makes very hard on dog paws especially with so little shade. So people opt to use the rest of the park that is grassy. It isn't ok that they do - but adjusting that would really help for the future space.
- Provide additional canopy tree planting for the balance of the Sorauren Park
- Very thoughtful design! Programming is rich and inclusive. Community has rumblings about DOLA being smaller but a well used rec centre is a much more valuable and inclusive use of space. Bravo. Well done.
- Overall this is a very nice proposal and design, though I really wish this center included a hockey rink.
- The ceremonial sacred space seems like it could be vandalized by not-nice people; are there preventative steps that could decrease the likelihood of that happening? Just the word 'sacred' seems like an invitation to vandalize it.
- Can we get on with building this already? How much more community consultation do we need? It's a community center, I am sure we've built one or two before this one non?
- I think there should be more shade options for the market square. Also, consideration about waste and recycling. And how the space could potentially be used as a warming center for under housed people in our community.
- Are the pathways made with porous materials for drainage?
- Retaining as many trees in situ as possible is very important. The sloped lawn will be icy in winter and should be changed to obviate hazardous walking conditions in winter. Please expand the size of the dog park.
- Once again, I am saddened that the original hope for the Sorauren community centre as one that would genuinely reflect the community beyond physical recreation, including makers, artists, seniors and other individuals and groups, has not been reflected in the design. The external design is also depressing, considering its setting and the lovely and even beautiful options that were shown at early community meetings. I would like to think that designers of 21st century recreational buildings, and especially this one in the unique historic location, could do much better
- I appreciate that much of this process started pre-pandemic, before the explosion of dogs and work from home. But the park is used differently now. It is the neighbourhood backyard in a way that it was not before March 2020. It is used far more than ever before by a wide range of stakeholders. The grassy areas have become a contested area now that so many people want to picnic, do fitness, etc., and so many people have dogs. We need a larger dog space, not smaller. It is a huge mistake, and will undermine the core values of bringing the community together if you don't create an additional space. You will end up with a beautiful park with people fighting over the field. Dog owners are not going anywhere, and especially those with smaller animals will continue

to use the sports fields for their animals. PLEASE LISTEN TO THE DOG OWNERS. You cannot make the dog park smaller. We need more space, not less space, especially if you make it more appealing. It would be a very stupid misstep and it will result in more neighbourhood conflict.

- This needs to be as dog friendly as possible. If dogs aren't allowed inside I'm guessing, then the dog park needs to be as attractive as possible. Bigger, shadier, cleaner, sustainable. This might reduce the off leash dogs in undesignated areas
- Is there not a multipurpose standard gym with equipment?
- Please please please make the off leash area bigger. The animosity between non dog owners and dog owners will only get worse if u make that area smaller
- A little outside of the scope of this project, but bike lanes on Wabash would be grand as another way to encourage access to the site.
- if community gardens aren't allowed on city roofs, it would be amazing if some of the outdoor landscaping could be adjusted to accommodate something like this
- Since there is a pool please don't miss the opportunity to include a sauna, steam room and hot tub. Most community centres world wide include these amenities. It's proven to provide great health benefits.
- For this centre to work, there needs to be security including provisions to ensure that it doesn't turn into a de-facto homeless shelter and that people who are in need of housing do not create a tent city in the park or the public areas.
- Ensure that specification of mechanical systems sonic levels are sufficiently low so as not to cause noise pollution, both interior and exterior (e.g. roof garden) of the complex itself, and surrounding areas.
- We keep replacing outdoor spaces with indoor. It takes energy to run increasing the need for fuel. It also reduces green spaces and trees which are good for insects, birds, etc. Not only that but humans need more access to outdoor green spaces. Driving people inside, in spaces that aren't really spacious just makes for an eyesore in the area while also half-assedly surfing the community in a crowded indoor environments. Encourage more outdoor activity. Preserve outdoor spaces.
- As per email: 40 Wabash Community Centre - Community Feedback from the FOSP on May 23, 2023 11:08 AM Also - the Friends of the West Toronto Railpath we not invited to be a part of this consultation (they should have been one of the CRG's) and when asked to be included the request was denied.