

City of Toronto Emergency Plan

November 2023

Toronto Emergency Management

www.toronto.ca/oem



Table of Contents

City of Toronto Emergency Plan	1
1.0 Introduction	3
2.0 Purpose	4
3.0 Scope	4
4.0 Legal Authorities.....	4
5.0 Planning Assumptions.....	5
6.0 Emergency Management Governance Structure	6
7.0 Hazard Identification and Risk Assessment	15
8.0 Preparedness Cycle	16
9.0 Concept of Operations	17
10.0 Recovery Operations.....	24
11.0 Revision History	25

1.0 Introduction

The City of Toronto is vulnerable to numerous hazards. The hazards can be natural such as extreme weather, human-caused such as an incident at a special event or cyber-attack, or technological such as those involving hazardous materials, infrastructure disruptions, and utility and power failures.

The City of Toronto Emergency Plan establishes the framework that ensures the City is prepared to deal with any of these hazards. It is the methodology through which the City will mobilize its resources in the event of an emergency, thereby restoring the municipality to a state of normalcy. The Plan is designed to ensure that all agencies which may become involved in an emergency are aware of their respective roles and responsibilities during that emergency and participate in the emergency management program.

Additionally, the Emergency Plan makes provisions for the earliest possible coordinated response to an emergency, an understanding of the personnel and resources available to the City, and recognition that additional expertise and resources can be called upon if required.

The Emergency Plan is utilized as a tool to assist emergency and municipal services and officials in their emergency response activities to provide an efficient and effective response to an emergency. The Plan must be flexible enough to adapt to a broad spectrum of emergencies and must be supported with:

- adequate personnel, equipment and expertise from the response agencies
- familiarity with contents of the Plan and its supporting documents by participating agencies
- training and exercises
- awareness of resources available from neighbouring municipalities and the private sector, supplemented by prearranged agreements
- testing of the Plan on a regular basis
- review of the Plan following an emergency or exercise where it was implemented

The Emergency Plan outlines how City agencies will respond to, recover from, and mitigate the impact of an emergency. The Plan contains sections that describe legal authorities, planning assumptions, concept of operations, operational life cycle, organizational responsibilities, and the preparedness cycle.

Emergency Support Functions are supporting documents to the Emergency Plan that provide structure for City divisions, agencies and corporations and outside stakeholders that work collaboratively to provide coordinated support, resources and personnel during an emergency response to an incident. The documents describe how the City's divisions, agencies and corporations and outside stakeholders coordinate to save lives, protect property and the environment, restore essential services and critical infrastructure, and help victims and communities return to normal following an emergency.

Hazard-Specific Plans are also supporting documents to the Emergency Plan. They contain specific response plans for hazards that may pose a threat to the City of Toronto. These plans reflect the City of Toronto's Hazard Identification and Risk Assessment (see [Section 7.0](#)).

2.0 Purpose

The aim of the City of Toronto Emergency Plan is to provide the framework for extraordinary arrangements and measures that can be taken to protect the health, safety, and welfare of the inhabitants of the City of Toronto when faced with an emergency.

The Plan unifies the efforts of the City's divisions, agencies and corporations and outside stakeholders for a comprehensive and effective approach to response and reduction of impact from an emergency. It is intended to increase the emergency response capability of the City of Toronto by establishing a plan of action to efficiently and effectively deploy emergency services.

3.0 Scope

This Emergency Plan and its supporting documents (Emergency Support Functions and Hazard-Specific Plans) outline the coordinated response that the City of Toronto undertakes in collaboration with its divisions, agencies and corporations and outside stakeholders to ensure an effective response and recovery from an emergency.

4.0 Legal Authorities

Legislation under which the municipality, its employees and agents are authorized to respond to an emergency are as follows:

- [City of Toronto Municipal Code, Chapter 59, Emergency Management \("Chapter 59"\)](#)
- [Emergency Management and Civil Protection Act](#)

4.1 Toronto Municipal Code, Chapter 59, Emergency Management

The provisions of Chapter 59 provide the governance structure, including delegated authorities, membership of the Toronto Emergency Management Program Committee and reporting relationships to City Council.

4.2 Emergency Management and Civil Protection Act

The [Emergency Management and Civil Protection Act](#) is provincial legislation which, among other subjects, imposes requirements on municipalities concerning their emergency management program. Section 2.1 of the Act requires municipalities to develop and implement an emergency management program and adopt it through by-law. An emergency management program must consist of:

- an emergency plan
- training programs and exercises for employees of municipalities and other persons with respect to the provision of required services and procedures to be followed in emergency response and recovery activities,
- public education on risks to public safety and on public preparedness for emergencies, and
- any other element required by standards for emergency management programs that may be developed by the Minister of Community Safety and Correctional Services

In developing the emergency management program, the municipality must identify and assess various hazards and risks to public safety that could give rise to emergencies and identify the facilities and other elements of the infrastructure that are at risk of being affected by emergencies. Each municipality must conduct training programs and exercises to ensure the readiness of employees of the municipality and other persons to act under the emergency plan. Each municipality shall review and, if necessary, revise its emergency plan on an annual basis.

The Minister of Community Safety and Correctional Services can establish standards for development and implementation of emergency management programs and for the formulation and implementation of emergency plans.

5.0 Planning Assumptions

- An emergency is defined under the [Emergency Management and Civil Protection Act](#) as a situation or an impending situation that constitutes a danger of major proportions that could result in serious harm to persons or substantial damage to property and that is caused by the forces of nature, a disease or other health risk, an accident or an act whether intentional or otherwise.
- During regular operations, Incidents (Level 1) are within the response capabilities of the City and its Divisions, Agencies, and Corporations. A Level 2 or 3 (Emergency or Major Emergency) will likely strain the City's capabilities and require provincial and/or federal assistance (see [Section 9.2](#)).
- An emergency in the City may occur with little or no warning, and may escalate more rapidly than response organizations can manage.
- An emergency may cause injury, fatalities, property loss, and disruption of normal support systems. A large number of casualties, heavy damage to buildings and

basic infrastructure, and disruption of essential public services may stress the capabilities of the City to meet the needs of the situation.

- Achieving and maintaining effective resident and community preparedness reduces the immediate demands on response organizations. Public awareness and education programs are required to ensure residents will take appropriate advance actions to reduce their vulnerability especially during the first 72 hours of an emergency.
- When the City's resources are strained, additional resources may be requested through mutual assistance agreements with neighbouring municipalities and/or through requests to the provincial and federal governments.
- The Emergency Operations Centre will be activated and staffed to manage the strategic response to the emergency and to support emergency operations at the site.
- Members of the Toronto Emergency Management Program Committee will be required to mobilize on short notice to provide timely and effective direction or assistance.
- If activated, members of the Emergency Management Working Group (the "Working Group") or a designate from their Division, Agency or Corporation will be required to respond on short notice to attend the Emergency Operations Centre.
- Each Division, Agency and Corporation will track, document and seek reimbursement, as appropriate, for costs incurred during emergency response and recovery operations.

6.0 Emergency Management Governance Structure

6.1 Toronto Emergency Management Program Committee

Chapter 59 defines the composition of the Toronto Emergency Management Program Committee.

Composition

The Toronto Emergency Management Program Committee shall consist of representatives holding positions in the City, its divisions, agencies and corporations, or those designated to act on their behalf.

The membership of the Toronto Emergency Management Program Committee includes the following positions or such successor titles as outlined in Chapter 59:

- Mayor
- Deputy Mayor
- City Manager

- Deputy City Manager, Community & Social Services
- Deputy City Manager, Corporate Services
- Deputy City Manager, Infrastructure Services
- Fire Chief and General Manager, Toronto Fire Services
- Chief and General Manager, Toronto Paramedic Services
- Medical Officer of Health
- Director, Strategic Communications
- Chief People Officer
- General Manager, Transportation Services
- General Manager, Toronto Water
- General Manager, Shelter, Support and Housing Administration
- City Solicitor
- Chief Financial Officer and Treasurer
- Chief Building Official and Executive Director, Toronto Building
- General Manager, Parks, Forestry and Recreation
- General Manager, Solid Waste Management
- General Manager, Facilities Management
- Chief Technology Officer
- Director, Insurance and Risk Management
- Executive Director, Toronto Emergency Management
- City Clerk
- Chief Resilience Officer (or the appropriate successor position that has assumed this role's functions)
- Chief Information Security Officer
- Executive Director, Engineering & Construction Services
- Chief of Police
- Chief General Manager, Toronto Transit Commission
- Chief Executive Officer and Secretary Treasurer, Toronto and Region Conservation Authority
- Executive Vice-President, Toronto Hydro

Objectives of the Toronto Emergency Management Program Committee

The City of Toronto Emergency Management Program Committee provides the City with an effective vehicle for developing and maintaining a comprehensive emergency management program, as defined under the Emergency Management and Civil Protection Act and Chapter 59.

Toronto Emergency Management Program Committee Control Group

In the event of an emergency, the Toronto Emergency Management Program Committee Control Group (the "Control Group") convenes as it becomes reactive. The membership of the Control Group remains the same as the Toronto Emergency Management Program Committee.

The Mayor; or in the absence or unavailability of the Mayor, the City Manager; or, alternatively a designate for the Mayor, or City Manager as may be required, will act as Chair of the Control Group as specified in Chapter 59. The Control Group will provide overall policy and strategic direction to the Emergency Operations Centre to support the evolving response activities on the road to recovery.

The Emergency Operations Centre will coordinate the City's response to the emergency using the Incident Management System. The foundation of the Incident Management System is the collaboration and coordination in the establishment of goals, the setting of priorities and the assignment of resources to effectively manage the emergency.

Authority of Control Group

Under section 59-7.1, of Chapter 59 in the event of an emergency, whether declared or not under the Act, the Control Group is authorized to:

- initiate, coordinate, direct and otherwise bring about the implementation of the Plan and undertake such other activities as they consider necessary to address the emergency
- expend funds for the purposes of responding to and recovering from the emergency, including obtaining and distributing emergency materials, equipment and supplies, notwithstanding the requirements of any by-law governing the commitment of funds and the payment of accounts
- obtain volunteer support from public agencies and other persons as considered necessary and to indemnify such agencies, their personnel, and other persons engaged in work that has been authorized pursuant to this Chapter or any other law, from liability for any acts or omissions resulting from any actions taken pursuant to this Chapter or any other law

Role of Chair, Control Group

The Chair of the Control Group is responsible for initiating, coordinating and directing activities that the Control Group considers necessary to respond to the emergency including, but not limited to:

- taking actions considered necessary to implement the Emergency Plan and to protect the health, safety and welfare of the public and protect property, government infrastructure, and the environment; these actions are not contrary to law or the responsibilities and authorities of the Chief of Police, Fire Chief and General Manager, Medical Officer of Health and/or Chief Building Official and Executive Director of Toronto Building
- ensuring that a designated City spokesperson is appointed to provide a coordinated approach in directing public information activities during the initial phase of the emergency
- coordinating communications between the Mayor's Office and/or Council and the Control Group on the necessary actions being taken
- determining if municipal resources are adequate or if further resources are required
- providing advice on an emergency declaration and terminating an emergency

- ensuring that when required, assistance be facilitated from other levels of government
- liaising with other levels of government on areas of collaboration and cooperation

6.2 Notifying City Manager of Emergency

The Deputy City Manager, Infrastructure Services, or their designate contacts the City Manager to report that the City of Toronto Emergency Operations Centre has been activated. Depending on the nature of the emergency, the Executive Director, Toronto Emergency Management, or any member of the Toronto Emergency Management Program Committee may notify the City Manager of an impending or actual emergency and request activation of the Emergency Operations Centre.

6.3 Emergency Management Working Group

Composition

Chapter 59 defines the composition of the Emergency Management Working Group ("Working Group"), as those persons selected by the Toronto Emergency Management Program Committee. Under this authority, the Toronto Emergency Management Program Committee has selected that the Working Group will consist of the following positions:

Division/ Agency/ Corporation	Working Group Member Job Title
Customer Experience Division (formerly 311 Toronto)	Operations Manager
City Clerk's Office	Manager, Business Transformation and Strategic Support
City Manager's Office	Project Director, Corporate Initiatives
Corporate Real Estate Management	Manager, Corporate Security
Deputy City Manager's Office, Community and Social Services	Policy Project Lead
Deputy City Manager's Office, Corporate Services	Manager, Program and Strategic Support

Division/ Agency/ Corporation	Working Group Member Job Title
Deputy City Manager's Office, Infrastructure Services	Manager, Strategic Initiatives
Engineering & Construction Services	Manager, Business Services
Toronto Emergency Management (Chair)	Executive Director
Office of the Chief Financial Officer	Management Consultant
Parks, Forestry and Recreation	Director, Management Services
People and Equity	Manager, Business Management Services
Purchasing and Materials Management	Manager, Materials Management & Stores
Seniors Services and Long-Term Care	Director, Management Services
Shelter, Support and Housing Administration	Project Director, Homelessness Initiative
Solid Waste Management Services	Program Manager, Strategic Initiatives
Strategic Partnerships	Partnership Advisor
Strategic Public and Employee Communications	Manager, Media Relations & Issues Management
Technology Services	Manager, Management Services
Toronto and Region Conservation Authority	Senior Manager, Flood Infrastructure and Hydrometrics
Toronto Building	District Manager, Inspections, Toronto & East York District

Division/ Agency/ Corporation	Working Group Member Job Title
Toronto Fire Services	Division Commander, Technical Operations
Toronto Hydro	Manager, Emergency Management & Business Continuity
Toronto Paramedic Services	Commander, Community Safeguard Services
Toronto Police Service	Inspector, Emergency Management and Public Order
Toronto Public Health	Manager, Planning & Performance
Toronto Public Library	Manager, Service Development – Venue & Community Space Rentals
Toronto Transit Commission	Director, Emergency Management and Fire Safety
Toronto Water	Director, Environment & Administration
Transportation Services	Manager, Business Support

Table 1: Emergency Management Working Group membership list.

6.4 Authority to Activate the Emergency Operations Centre

Any member of the Toronto Emergency Management Program Committee or Working Group has the authority and responsibility to request an activation of the Emergency Operations Centre and initiate the implementation of the Emergency Plan. Requests to activate the Emergency Operations Centre are directed to either the Executive Director, Toronto Emergency Management or to Toronto Emergency Management's 24 hours a day, 7 days a week On-Call Function.

Should an incident be classified as a Level 2 Emergency or Level 3 Major Emergency, the Toronto Emergency Management On-Call Function is contacted by Toronto Fire Services, Toronto Police Service and/or Toronto Paramedic Services. Toronto

Emergency Management staff would connect with the Deputy City Manager, Infrastructure Services, to initiate the implementation of the Emergency Plan.

The City of Toronto uses a three tier emergency level system to determine appropriate notifications as follows:

- Level 1 – Incident
- Level 2 – Emergency
- Level 3 – Major Emergency

Upon receiving an emergency notification, the Toronto Emergency Management 24/7 On-Call Function will liaise with the notifying division, agencies or corporation and utilize the Emergency Level Notifications table (see [Section 9.2](#)) as a tool to assist in establishing the immediate notifications that may be necessary and/or appropriate.

6.5 Staffing the Emergency Operations Centre

The Emergency Operations Centre ensures that the Control Group can uphold core functions of the Emergency Plan, including:

- effective policy and strategic direction to the emergency
- support of emergency operations at the site(s)
- consequence management
- resource management to support the site(s)
- coordination of management links to other Command/Divisional Operations Centres, external agencies and the Provincial Emergency Operations Centre
- provide information to the public and the news media
- maintain business continuity for the rest of the City

During a response, select members of the Working Group will establish and convene at the Emergency Operations Centre to activate these functions. The Emergency Operations Centre staff will provide operational guidance and support to the Incident Commander who maintains the lead role at a site. When divisions establish Divisional Operations Centres to provide operational support during an emergency response, there is a need to centralize efforts and coordinate operational response between all responding divisions. This function is provided by the City's Emergency Operations Centre.

The City's Emergency Operations Centre staffing plan ensures that the Emergency Operations Centre is always operationally ready for activation. Staff are required to take pre-requisite training to enable an effective and efficient implementation of Emergency Operations Centre initiatives through the Incident Management System.

6.6 Role of Emergency Operations Centre Director

The Emergency Operations Centre Director has overall authority and responsibility for activities of the Emergency Operations Centre and for ensuring organizational effectiveness. The Emergency Operations Centre Director establishes the Emergency Operations Centre's staffing levels, sets the Emergency Operations Centre priorities and objectives for each operational period and ensures objectives are carried out. The Emergency Operations Centre Director briefs the Control Group and other senior officials, as required, and directs appropriate public information in coordination with the Chief Communications Officer.

6.7 Site Response and Emergency Operations Centre Support

The Emergency Operations Centre maintains a dedicated facility from which the City of Toronto coordinates its strategic response to an emergency. The Emergency Operations Centre coordinates the management of resources, personnel and incident information.

The Emergency Operations Centre does not replace the need for a sound command structure at the site; instead, it complements the site with further coordination, resource management, information management and overall support.

6.8 Toronto Police Service Major Incident Command Centre

The Toronto Police Service Major Incident Command Centre is a central point of command, control, communication and information for the Toronto Police Service. When activated, the Major Incident Command Centre's Incident Commander has a full perspective of all resources under the command of the Toronto Police Service and tactical oversight of those resources in their function of ensuring public safety and security.

When activated, the Major Incident Command Centre is responsible for the continuity of policing services throughout the City of Toronto and for liaising with the City's Emergency Operations Centre (if activated) which provides links to all City divisions, agencies and corporations.

During a Major Incident Command Centre activation, Toronto Emergency Management may send a representative to convene at the Major Incident Command Centre and act as a Liaison Officer.

Toronto Fire Services, Toronto Paramedic Services, Toronto Transit Commission and other external partners may also attend the Major Incident Command Centre to oversee coordination of their respective services with Toronto Police Service operations.

6.9 Councillor Roles in an Emergency

The Toronto Emergency Management Program Committee approved the Councillor Coordination Emergency Support Function in 2015. This Emergency Support Function outlines when and how Councillors' Offices are notified of an activation of the Emergency Operations Centre. It outlines protocols for regular communication with Councillors during a Level 2 Emergency or a Level 3 Major Emergency. The Emergency Support Function also outlines the councillors' requirements for keeping contact information for themselves and their staff up to date and responding to the quarterly requirement to confirm their information for the mass notification system. It specifies parameters for training of appropriate parties, including councillors and their staff, City Clerk's Office and Toronto Emergency Management.

The Councillor Coordination Emergency Support Function also outlines the role of the councillors' offices throughout an emergency. For example, during a Level 2 Emergency or Level 3 Major Emergency, councillors leverage formal and informal community networks to help disseminate the information provided by the Emergency Operations Centre Councillor Coordination Liaison. They also report urgent matters to the Councillor Coordination Liaison for escalation to the appropriate parties.

6.10 Standardized Response Goals

A response goal is a broad statement that describes a desired outcome. Priorities for response goals generally focus on eliminating or minimizing impacts of the incident on people, property and financial resources.

Emergency Operations Centre staff ensure that all levels of the response management system adhere to standardized response goals in the following order of priority:

- provide for the safety and health of responders
- save lives
- reduce suffering
- protect public health
- protect government infrastructure
- protect property
- protect the environment
- reduce economic and social losses

6.11 External Organizations – Private Sector Partners

Depending on the nature of the emergency, external organizations may be asked to provide a representative (e.g., Enbridge, Greater Toronto Airport Authority, Canadian National or Canadian Pacific Rail, etc.) to join the Emergency Operations Centre to assist in coordinating the response.

6.12 Divisional Emergency Management

To fully implement the emergency management program horizontally and vertically throughout the City of Toronto's organizational structure, it is recommended that those divisions with membership on Toronto Emergency Management Program Committee and/or Working Group have a designated staff member(s), with roles and responsibilities included in formal job descriptions. This increases the City of Toronto's ability to mitigate, prepare, respond and recover from emergencies and major emergencies and begin the process of embedding an emergency management and business continuity culture to routine business processes and program considerations.

7.0 Hazard Identification and Risk Assessment

Hazard Identification and Risk Assessment is an evaluation method used to understand hazards. This method helps determine which hazards are most likely to result in an emergency and allows for the comparison of risk between hazards.

Toronto Emergency Management has identified and assessed the various hazards and risks to public safety that could give rise to emergencies and has identified the facilities and other elements of the infrastructure that are at risk of being affected by emergencies. Toronto Emergency Management has developed Emergency Support Functions and Hazard-Specific Plans based on this assessment.

There are three major categories of hazards that may pose a threat to the City of Toronto:

- natural hazards are hazards that are caused by forces of nature; human activity may trigger or worsen the hazard
- human-caused hazards are hazards that result from direct human action or inaction, either intentional or unintentional
- technological hazards are hazards that arise from the manufacture, transportation, and use of substances such as radioactive materials, chemicals, explosives, and flammables

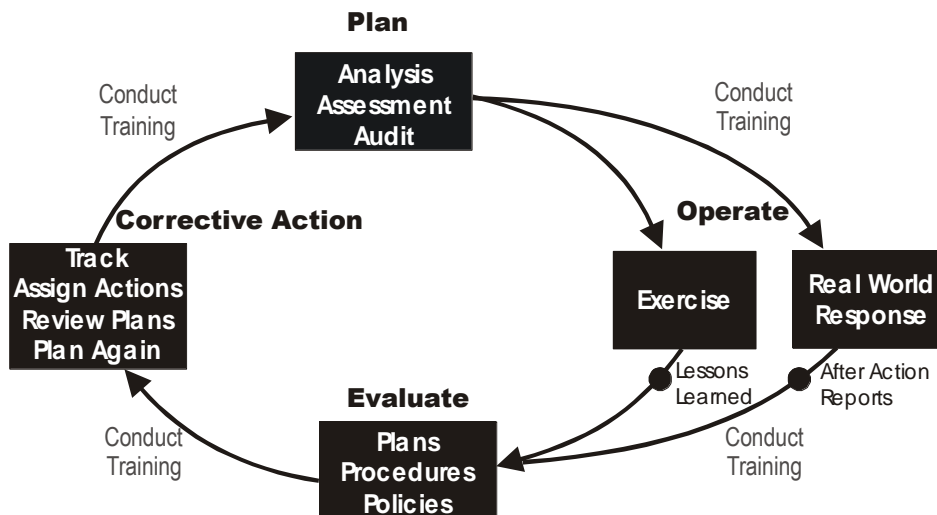
The top 10 risks for the City of Toronto are:

1. energy emergency (supply)
2. explosions / fires
3. winter weather
4. pandemic
5. cyber threats
6. terrorism
7. epidemic
8. flood
9. fuel/ natural gas supply disruption
10. extreme heat

8.0 Preparedness Cycle

The Emergency Plan will be maintained, reviewed, and updated according to a preparedness cycle that includes four phases: plan, operate, evaluate, and take corrective action. Participation of the Toronto Emergency Management Program Committee during all phases of this cycle ensures that the Plan reflects the current policies, organizational structures, and methodologies utilized by the City of Toronto.

Diagram Description: This diagram depicts the maintenance schedule of the Emergency Plan



9.0 Concept of Operations

9.1 General

The City's emergency services (Toronto Police Service, Toronto Fire Services, and Toronto Paramedic Services) and other divisions, agencies and corporations manage many incidents that occur on a day-to-day basis. As the magnitude of an emergency increases, so will the requirement for additional support from within the City. The City's Emergency Operations Centre may be activated to provide support. The Control Group may elect to call upon neighbouring municipalities to provide mutual assistance in accordance with standing agreements. The City may also call upon the provincial government to provide supplemental financial and/or physical resources necessary to deal with the overall impacts of the emergency.

The City's Emergency Plan adopts the principles of the Incident Management System. The Incident Management System is a standardized approach to emergency management that encompasses personnel, facilities, equipment, procedures and communications operating within a common organizational structure. Incident Management System concepts and principles include comprehensive resource management, action planning, integrated communications, interoperability, a modular and scalable framework, standard terminology, and span of control.

The five major sections of the Incident Management System (Command, Operations, Planning, Logistics and Finance & Administration) can be expanded or contracted to meet requirements as an event progresses. When activated, the City of Toronto staff who fill these roles are referred to as an Incident Management Team.

The response to an emergency in the City will be managed using the Toronto Emergency Plan and any relevant Emergency Support Functions and Hazard-Specific Plans with the following assumptions:

- the Head of each division, agency and corporation is responsible for the overall operation of their organization
- use of mutual aid assistance for cooperative response will be entered into and maintained with adjoining municipalities for the purpose of reciprocal assistance
- normal communication modes and reporting channels will be used to the maximum practical extent; back-up communications systems will be used in the event that commercial communications systems are disrupted, saturated, or otherwise unavailable
- City divisions will employ their standard business continuity and business resumption planning principles to ensure the continuity of essential services
- day-to-day functions that do not contribute directly to the operation may be suspended for the duration of the emergency; efforts that would normally be required of those day-to-day functions will be redirected to accomplish the emergency task

9.2 Emergency Levels

Most emergencies are managed at site by emergency services and other divisions, agencies and corporations, and are considered routine operations. Emergencies of greater magnitude do happen from time to time and require an emergency management response structure beyond normal daily operations. The required response must be appropriate to the magnitude of the incident and follow the four level notification system as defined in the following Emergency Level Notifications table.

Table 1: Emergency Level Notifications

Level 1 – Incident	
Operational Implications	<p>This level requires coordination, collaboration and/or communications for one or a combination of the following:</p> <ul style="list-style-type: none"> • effective policy and strategic direction to the emergency • support of emergency operations at the site(s) • consequence management • resource management • coordination of management linkages to the site, Divisional Operations Centre(s), external agencies and the Provincial Emergency Operations Centre • information to the public and news media • business continuity for the rest of the City
Toronto Emergency Management Support	Support available through 24/7 On-Call Function.
City Division Notification	Lead division(s) will follow established notification and escalation procedures to their chain of command.
Toronto Emergency Management Notification	<p>No notifications required as division(s) will follow established internal notification and escalation procedures.</p> <p>If Toronto Emergency Management is activated to monitor, it will notify members of the Control Group, Emergency Management Working Group, Strategic Public and Employee Communications, City Clerk's Office and other divisions, agencies and corporations.</p>
Examples	Localized power disruptions, severe weather watches and warnings, localized flooding, Emergency Social Services coordination and response.

Level 2 – Emergency	
Operational Implications	<p>This level requires coordination, collaboration and/or communications for one or a combination of the following:</p> <ul style="list-style-type: none"> • effective policy and strategic direction to the emergency • support of emergency operations at the site(s) • consequence management • resource management • coordination of management linkages to the site, Divisional Operations Centre, external agencies and the Provincial Emergency Operations Centre • information to the public and news media • business continuity for the rest of the City
Toronto Emergency Management Support	<p>Toronto Emergency Management will:</p> <ul style="list-style-type: none"> • facilitate access to City divisions/external agencies and/or • facilitate integration of City divisions/external agencies into the Incident Management System in the Emergency Operations Centre and/or • attend site as a Liaison Officer
City Division Notification	<p>Lead divisions will follow established notification and escalation procedures to their chain of command and Toronto Emergency Management.</p>
Toronto Emergency Management Notification	<p>Toronto Emergency Management will notify:</p> <ul style="list-style-type: none"> • Deputy City Manager, Infrastructure Services • City Clerk's Office • Strategic Public and Employee Communications • Control Group, Emergency Management Working Group and Emergency Social Services Working Group <p>Strategic Public and Employee Communications will activate the Emergency Information and Media Relations Emergency Support Function</p> <p>The City Clerk's Office will notify Councillors of the activation of the Emergency Operations Centre and the Councillor Coordination Emergency Support Function.</p>
Examples	<p>High-rise(s) or large area evacuation, major road(s) washout/closures, emergency social services reception centre, large power outage (2010 - 200 Wellesley St., 2013 – July 8 flooding).</p>

Level 3 – Major Emergency	
Operational Implications	<p>This level requires coordination, collaboration and/or communications for ALL of the following purposes:</p> <ul style="list-style-type: none"> • effective policy and strategic direction to the emergency • support of emergency operations at the site(s) • consequence management • resource management • co-ordination of management linkages to the site, Divisional Operations Centre, external agencies and the Provincial Emergency Operations Centre • information to the public and news media • business continuity for the rest of the City
Toronto Emergency Management Support	<p>Toronto Emergency Management may;</p> <ul style="list-style-type: none"> • facilitate access to City divisions/external agencies and/or • facilitate integration of City divisions/external agencies into the Incident Management System in the Emergency Operations Centre and/or • attend site as a Liaison Officer
City Division Notification	<p>Lead divisions will follow established notification and escalation procedures to their chain of command and Toronto Emergency Management.</p>
Toronto Emergency Management Notification	<p>Toronto Emergency Management will notify:</p> <ul style="list-style-type: none"> • Deputy City Manager, Infrastructure Services • City Clerk's Office • Strategic Public and Employee Communications • the Control Group, Emergency Management Working Group, and Emergency Social Services Working Group • the Provincial Emergency Operations Centre <p>Strategic Public and Employee Communications will activate the Emergency Information and Media Relations Emergency Support Function.</p> <p>The City Clerk's Office will notify Councillors of the activation of the Emergency Operations Centre and the activation of the Councillor Coordination Emergency Support Function. The Clerk's Office will follow established protocols set out in the Councillor Coordination Emergency Support Function.</p>
Examples	<p>Nuclear incident, COVID-19 pandemic, city-wide power outage, severe storm/weather</p>

Table 2: Description of emergency response levels.

9.3 Emergency Support Functions

Councillor Coordination

The Councillor Coordination Emergency Support Function establishes when and how City Clerk's and Councillors' Offices are notified of an activation of the Emergency Operations Centre. It outlines protocols for regular communication with Councillors during a Level 2 Emergency or a Level 3 Major Emergency. It specifies parameters for training for appropriate parties, including Councillors and their staff, City Clerk's Office staff and Toronto Emergency Management staff.

Animal Care and Relief Services

Animal care and relief is coordinated by Toronto Animal Services in the Municipal Licensing & Standards Division and delivered by pre-identified animal care and relief responders with pre-determined roles that come together to provide these services in emergencies. The Animal Care and Relief Services Emergency Support Function outlines the response provided to service and companion animals that are displaced or otherwise affected by an emergency and provides an overview of roles and responsibilities.

Damage Assessment

The purpose of the Damage Assessment Emergency Support Function is to define the roles and responsibilities of City of Toronto divisions, agencies and corporations in order to provide guidance to staff related to the inspection and reporting on the condition of buildings, designated structures and municipal infrastructure.

Debris Management

The Debris Management Emergency Support Function defines the roles and responsibilities of divisions, agencies and corporations for the management (removal and disposition) of debris following an incident. The purpose of this Emergency Support Function is to mitigate against any potential threat to lives, health, safety and welfare of the impacted citizens, expedite search and rescue and/or recovery efforts of impacted area(s).

Emergency Donations Management

This Emergency Donations Management Emergency Support Function applies to financial contributions and donated goods. It guides emergency donations management during an emergency response. It does not include offers of personal service or labour.

Emergency Information and Media Relations

The Emergency Information and Media Relations Emergency Support Function outlines the role of the Strategic Public and Employee Communications Division during an

emergency and supports the City of Toronto's efforts to assist Toronto residents in coping with, and recovering from, a Level 2 Emergency or Level 3 Major Emergency.

The Strategic Public and Employee Communications Division is responsible for implementation and oversight of the City of Toronto's communications activities. The Division will provide advice to the City's divisions, agencies and corporations as required, or as directed by the City Manager.

Strategic Public and Employee Communications is responsible for communicating critical information before an impending incident (if applicable), during and after a major disaster or public emergency on behalf of the Emergency Operations Centre and City officials to 311 Toronto, City staff, members of Council, community leaders, residents, businesses and the media.

This Emergency Support Function addresses the principles, planning assumptions and concept of operations for emergency information, issues management and media relations for a potential or imminent emergency.

If the emergency involves multiple jurisdictions, communications may be joint where necessary or appropriate. In the event of a major public emergency that requires a provincial and/or federal response, Strategic Public and Employee Communications will coordinate City of Toronto communications with provincial and federal officials as appropriate.

Emergency Social Services

The Emergency Social Services Emergency Support Function outlines the response provided when residents are displaced or otherwise affected by an emergency. This Emergency Support Function guides the Emergency Social Services response provided during a Level 1 – Incident up to a Level 3 – Major Emergency.

This Emergency Support Function does not include services for people who require immediate medical care. When evacuees who need immediate medical assistance are identified, services are provided by Toronto Paramedic Services through 911 calls and other procedures. Long-term housing is also outside the scope of this Emergency Support Function.

Evacuation

This Emergency Support Function deals with planning and preparing for a decision to evacuate an area in the event of an emergency or pending emergency, a description of responsibilities to conduct the evacuation, and the process for re-entry. It includes a description of the responsibilities of staff, agencies and procedures involved in alerting the community of the need to evacuate, movement of the population during the evacuation and re-entry of the population once the affected area is deemed safe.

Since emergencies and pending emergencies are diverse in nature, it is difficult to create a plan that has a detailed account of the duties involved. The aim of this

document is to provide guidance for the responsibilities that will ensure the safety and security of the community during an emergency evacuation.

Mass Casualty

The Mass Casualty Emergency Support Function describes a coordinated and effective approach to providing health and medical assistance in the immediate aftermath of a mass casualty emergency that impedes routine health and medical services within the City of Toronto. It provides direction for responding to mass casualty needs following an emergency. Assistance provided under this Emergency Support Function is directed by Toronto Paramedic Services and is supported by several agencies within the City as well as the coordination between the agencies and private healthcare service providers.

Traffic Management

The Traffic Management Emergency Support Function describes the transportation resources (facilities, equipment, materials, supplies, and human and technical information) that support the City's ability to implement an emergency transportation response. The aim of this Emergency Support Function is to provide the inter-Divisional and inter-agency operational support responsibilities that will ensure the safety and security of first responders, the general public and visitors to the City of Toronto.

Volunteer Management

The purpose of this Emergency Support Function is to facilitate and coordinate the placement of unaffiliated volunteers to assist in an emergency. It defines the roles and responsibilities within the volunteer coordination plan and provides guidance to Human Resources as the lead division for volunteer coordination.

9.4 Hazard-Specific Plans

Flooding

The purpose of the Flooding Hazard-Specific Plan is to provide a framework for the coordination of the City of Toronto's response to ensure public safety and to minimize damage to property in the event of a major flood event. This document identifies the major response and recovery activities undertaken by the City of Toronto and its outside stakeholders during a flood event, with details of specific activities each partner agency may undertake during a flood event.

Nuclear Emergency Response Plan

The City of Toronto Nuclear Emergency Response Plan describes how the city will coordinate its efforts in response to an emergency at the Pickering Nuclear Generating Station.

Power Disruption (Electricity)

The purpose of the Power Disruption Hazard-Specific Plan is to identify the general roles and responsibilities that City of Toronto divisions, agencies and corporations have in responding to a power failure event and, if necessary, to assist Toronto Hydro's efforts to coordinate a timely and effective response to a power failure event. In addition, this Hazard-Specific Plan identifies operational procedures among the participating City divisions, agencies and corporations with respect to their individual role(s) during a power interruption event. These procedures are intended to ensure the health and safety of responding personnel, and to contribute to a coordinated recovery plan.

10.0 Recovery Operations

Recovery planning identifies issues, coordinates resources, ensures information is accurate and reliable, and works to restore utilities and other services in a timely manner. It provides an accountable, transparent process that ensures recovery services are accessible and applied in a consistent manner City-wide.

Recovery is a coordinated process of supporting affected communities in the reconstruction of the physical infrastructure and restoration of emotional, social, economic and physical wellbeing.

11.0 Revision History

Rev. No.	Revised by	Details	Revision Date
1	City of Toronto, Office of Emergency Management (OEM)	Plan Development and Report to Committee.	May 2005
2	City of Toronto, OEM	Plan Review.	May 2006
3	City of Toronto, OEM: W. Leonard, J. Smysnuik	Plan Review.	June 2007
4	City of Toronto, OEM: W. Leonard, J. Smysnuik, G. Symonds	Plan Revision/Edit.	August 2008
5	City of Toronto, OEM: W. Leonard, J. Smysnuik	Plan Revision as per by-law revisions and report to Executive Committee.	April 2009
6	City of Toronto, OEM: L. Chandler, W. Leonard, J. Kilgour, W. Banon	Plan Revision as per by-law revisions and report to Executive Committee.	October 2011
7	City of Toronto, OEM: L. Chandler, W. Leonard, J. Kilgour, W. Banon	Plan Revision as per by-law revisions and reported to Toronto Emergency Management Program Committee.	December 2011
8	City of Toronto, OEM: L. Chandler, W. Leonard, J. Kilgour, W. Banon	Plan Revision as per by-law revisions and reported to Toronto Emergency Management Program Committee.	October 2012
9	City of Toronto, OEM: W. Banon	Emergency Levels Table as per Ombudsman Report.	February 2013

Rev. No.	Revised by	Details	Revision Date
10	City of Toronto, OEM: J. Kilgour, B. Eyre, W. Banon	Annual update and revisions as per changes to the Municipal Code, Chapter 59. Minor language clarifications to Sections 6.3 and 6.7 as presented to Toronto Emergency Management Program Committee, December 19, 2013.	December 2013
11	City of Toronto, OEM: J. Kilgour, D. Clark	Annual update and revisions as per changes to the Municipal Code, Chapter 59. EMWG feedback, and reported to Toronto Emergency Program Committee.	December 2014
12	City of Toronto, OEM: L. Chandler, T. Griffin, J. Kilgour, S. Waters City of Toronto, Strategic Communications: J. DeSouza, W. Brown	Annual Update and revisions as per the Municipal Code, Chapter 59, Emergency Management Working Group (EMWG) feedback, and Toronto Emergency Management Program Committee approval.	December 2015
13	City of Toronto, OEM: L. Chandler, T. Griffin, J. Kilgour, S. Waters	Annual Update and revisions as per the Municipal Code, Chapter 59, Emergency Management Working Group feedback, and Toronto Emergency Management Program Committee approval.	September 2016
14	City of Toronto, OEM: L. Chandler, T. Griffin, D. Clark	Annual Update and revisions as per the Municipal Code, Chapter 59, Emergency Management Working Group feedback, and Toronto Emergency Management Program Committee approval.	September 2017

Rev. No.	Revised by	Details	Revision Date
15	City of Toronto, OEM T. Griffin, J. Smysnuik, C. O'Sullivan	Annual update and revisions as per the Municipal Code, Chapter 59 and Toronto Emergency Management Program Committee approval.	December 2020
16	City of Toronto, OEM C. O'Sullivan, W. Banon, J. Beaven-Desjardins	Annual update and revisions as per the Municipal Code, Chapter 59 and Toronto Emergency Management Program Committee approval.	December 2021
17	City of Toronto, OEM C. O'Sullivan, J. Beaven-Desjardins	Annual update and revisions as per the Municipal Code, Chapter 59 and Toronto Emergency Management Program Committee approval.	November 2022
18	City of Toronto, Toronto Emergency Management (TEM) C. O'Sullivan, S. Wells	Annual update and revisions as per the <i>Municipal Code</i> , Chapter 59, and Toronto Emergency Management Program Committee approval.	November 2023