

Wynford-Concorde Focused Area Study

Kick-off Meeting - Information Session

December 5, 2023



Land Acknowledgment

We acknowledge the land we are meeting on is the traditional territory of many nations including the Mississaugas of the Credit, the Anishnabeg, the Chippewa, the Haudenosaunee and the Wendat peoples and is now home to many diverse First Nations, Inuit and Métis. We also acknowledge that Toronto is covered by Treaty 13 with the Mississaugas of the Credit.

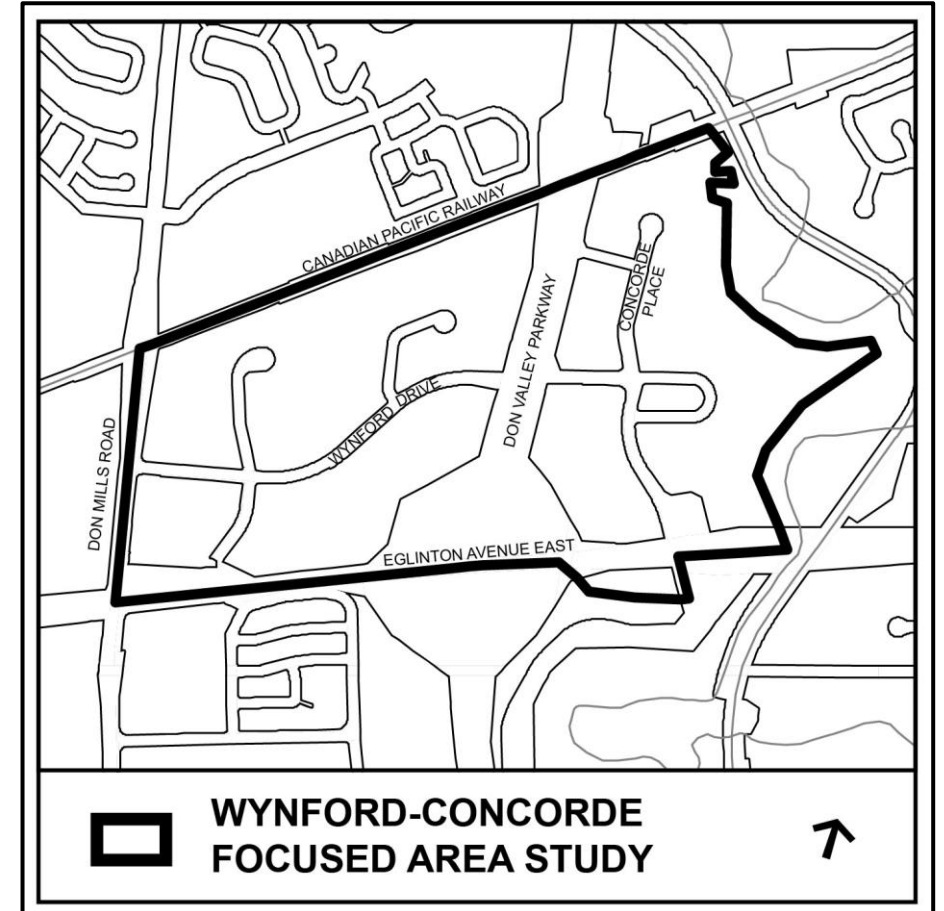
Today's Meeting

- This is an Open House meeting to kick-off the study
- This meeting is the first public engagement meeting with the community
- Open House format, where thematic display boards provide high level policy information and study context
- Staff are available at the boards in Kobayashi Hall to answer any questions you may have
- Activity boards are also located in Kobayashi Hall where we seeking initial input on existing conditions, community priorities and aspirations



The Study

- Council directed City Planning to undertake a study of the Wynford-Concorde area
- The study boundary has been extended to include the lands on the west side of the Don Valley Parkway to Don Mills Road
- The goal of the study is to develop a planning framework, with a focus on an enhanced public realm and streetscape for the area that integrates with a multi-modal transportation network to serve the existing and anticipated residential and employment populations of the area.



The Area

Study area is bound by:

- Don Mills Road (west)
- Eglinton Ave E (south)
- Charles Sauriol Conservation Area (east)
- Rail corridor (north)



Why do this study?

- Directed by Council to undertake a focused review of the area
- Study Goals:
 - Establish a framework for the area to manage change comprehensively
 - Opportunities to improve the public realm, streetscape, and mobility of the area
 - Strategies for a multi-modal transportation network for the area
 - Opportunities for co-ordinated and ongoing improvements
- Recommendations will be implemented over the long term through capital projects, capital works, and development applications



What are we studying?

Existing conditions

- Existing built form, streetscape, and public realm conditions
- Existing park locations
- Pedestrian facilities (sidewalks, mid-block connections, paths/trails, street trees, amenities)
- Cycling facilities, Transit facilities, Auto facilities
- Childcare, schools, libraries, recreation, and human services

Opportunities

- Examine opportunities for streetscape, public realm, and mobility improvements
- Potential park locations and park improvement opportunities
- Pedestrian improvements and connections
- Shared mobility opportunities
- Functional street designs
- Transportation Demand Management

What are we not studying?

Lands outside of Area

- Will not be studying any lands outside of the study boundary

Land Use Changes

- Will not be redesignating any existing land uses
- Will not be proposing zoning changes for the area
- Will not be studying density limits and transportation capacity
- Will not be recommending changes to recent planning approvals

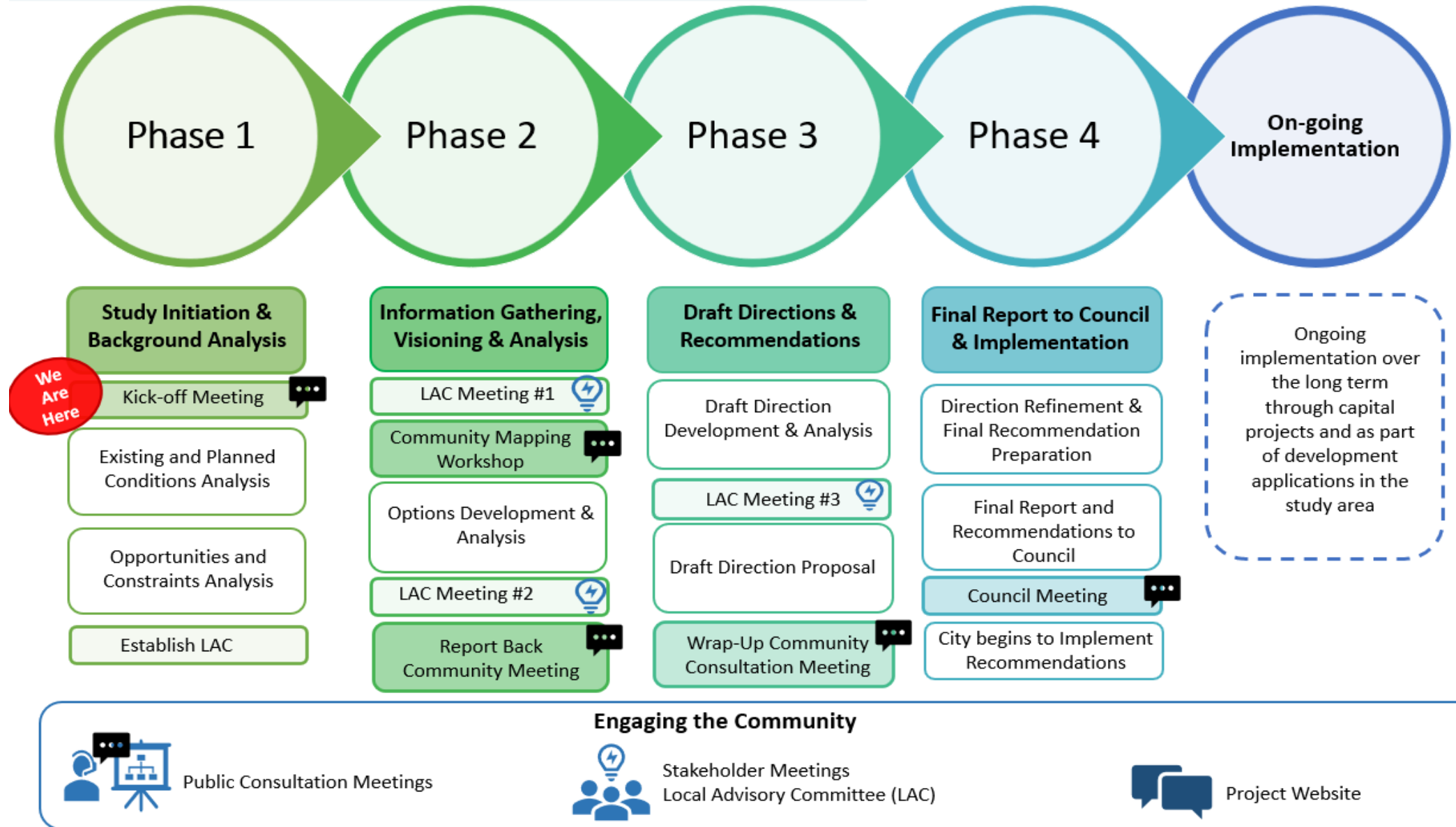
Duplication

- Will not be looking to duplicate any existing City-wide policies, guideline or standards

Environmental Assessment

- Will not be recommending changes to recently completed or ongoing Environmental Assessments

Study Phasing



Phase 1



Study Kick-off Open House (today)

Study team will review and analyze existing conditions of the area including:

- Recent development approvals
- Built Form, streetscape, and public realm
- Transportation network
- Infrastructure
- Parks and open space network
- Community Services and Facilities

A Local Advisory Committee (LAC) will be established in the new year (January 2024)

Phase 2

- Phase 2 anticipated to begin in the early spring 2024 and will run through summer 2024
- Local Advisory Committee (LAC) will be established
 - 2 meetings of the LAC will be held during this Phase
- City staff will be organizing a half-day Community Mapping Workshop with the community
- At the end of this Phase, outcomes of the Community Mapping Workshop will be presented to the larger community at a Report Back Meeting, and staff will provide an update on the study



Phase 3



- Phase 3 anticipated to commence late summer 2024
- The final meeting of the LAC will be held during Phase 3
- A Wrap-up Consultation meeting will be held in the community where City staff will present draft directions coming out of the study work

Phase 4 and Beyond

- Phase 4 anticipated to commence late fall 2024
- Final Report and any staff recommendations will be brought to North York Community Council
- City will begin to implement recommendations of the Final Report
- Ongoing implementation will occur over the long term through capital projects and as part of development applications in the study area



Community Engagement

Following the Open House Kick-off Meeting there will be additional opportunities for community engagement throughout the study. These opportunities will include:

- The establishment of a Local Advisory Committee
- A Community Mapping Workshop
- Additional Community Consultation Meetings
- On-line engagement opportunities



Next steps

Thank you for attending the information session. We ask that you visit Kobayashi Hall where display boards are set up based on themes.

- Staff will be available to answer any questions and provide clarifications in Kobayashi Hall
- Activity boards are set up in Kobayashi Hall. The activity boards are intended to get your initial comments and thoughts on matters related to the study area
- LAC application forms are available at the Welcome table. Please ask staff for an application form and Terms of Reference
- Please ensure that you have signed-in at the Welcome table



Contact:

Marian Prejel
Senior Planner

Marian.Prejel@toronto.ca

416.392.9337

Thank You

Please visit Kobayashi Hall. Staff are available in the Hall to answer questions

