

City of Toronto – Parks Development & Capital Projects

Eglinton Park Master Plan Implementation Community Advisory Group Meeting 3

Meeting Summary

June 20, 2023

Tonya Crawford, Senior Project Coordinator
Eli Bawuah, Senior Public Consultation Coordinator



Contents

| | |
|--|----|
| 1.0 Introduction | 3 |
| 2.0 Summary | 5 |
| 3.0 Next Steps | 9 |
| Appendix A: Meeting Slide Deck and Polling Results | 10 |

Report prepared by



1.0 Introduction

This document provides a summary of the Community Advisory Group (CAG) meeting that was held virtually on Tuesday, June 6, 2023 from 5:30 p.m. to 7:30 p.m. The CAG is made up of local representatives from residents groups and associations, schools, sports associations and other community groups and organizations.

More information about the project can be found on the [project webpage](#).

1.1 Meeting Purpose

The purpose of this meeting was to:

1. Present a project update on Phase 1 of the Eglinton Park Master Plan Implementation, including:
 - a. Updates to the Eglinton Park Master Plan
 - b. Feedback collected through engagement activities to-date and how this has influenced the changes to the Eglinton Park Master Plan
2. Present preliminary Design Concept Options
 - a. An interactive activity embedded into the presentation allowed participants to vote and comment on their preferred options
3. Share next steps

1.2 Project Scope

The scope of the project is summarized below:

- Confirm the Direction
- **Exploring Options — We Are Here**
- Setting the Direction
- Procurement & Construction

1.3 Project Timeline

- Phase 1 — Confirm the Directions
 - Park Pop-Up Event(s)
 - Social Pin-Point & Survey
 - Community Advisory Group Meeting
 - Indigenous Community Meeting
- Phase 2 — Exploring Options
 - **2 Community Advisory Group Meetings - We Are Here**
 - Community Advisory Group Meeting Survey
 - Public Survey
 - Indigenous Community Meeting
- Phase 3 — Setting the Direction
 - Public Survey
 - Indigenous Community Meeting

1.4 Community Advisory Committee

A Community Advisory Committee has been established for this project with the primary objective of guiding the design of the implementation of Phase 1 of the Eglinton Park Master Plan to align with community needs.

The first meeting of the Community Advisory Committee occurred in November of 2021, conducted virtually. A comprehensive summary report for the first Community Advisory Committee Meeting #1, including the presentation materials that were shared, has been published on the project webpage.

CAG Members Present

- Billy W
- Debbie T
- Gilbert M
- Geoff R
- Jacquelyn W
- Jean P
- John G
- Francis F
- Nic H
- Thomas W

Project Staff Present

- Eli Bawuah, Senior Public Consultation Coordinator
- Cristian Lukaszyk, Senior Project Manager, Capital Projects
- Tonya Crawford, Senior Project Coordinator, Capital Projects
- Mario Pecchia, Program Manager, Capital Project

2.0 Summary

During the meeting, PLANT Architects presented two concept options with preliminary designs for discussion and to gauge the CAG's member preferences.

The following park elements were open for discussion:

Heritage Garden

- Concept 1: inspired by sunflowers and creates a large shared space for gathering
- Concept 2: diverse plantings to support pollinators and informal seating for smaller groups

Dog Off-Leash Area

- Concept 1: "Barking Up the Wrong Tree" (nature themed)
- Concept 2: "Ruff Around the Edges" (urban themed)
- Fencing around the perimeter
- Play features
- Dog fountain location

Central Spine Path

- Concept 1: Concrete Unit Pavers
- Concept 2: Decorative Cast-In-Place Concrete
- Tree and plant species along the path and in the Heritage Garden

Ecological Placekeeping

- Concept 1: Story of the lost Mud Creek through etching and text cutouts, centred around the Heritage Garden
- Concept 2: Stones, reminiscent of river stones, scattered along the Central Spine Path with engravings

Other park elements that are not open for discussion but included in Priority Area 1 were mentioned by the Project Team, including lighting, Indigenous Placekeeping, West Stair Replacement, and the design of the Skate Spot. Additional engagement for Indigenous Placekeeping and the design of the Skate Spot is ongoing.

The presentation slides, including the results of the interactive voting activity, are included in **Appendix A**.

2.1 Summary of CAG Members' Preferences

Throughout the presentation, participants were invited to respond to specific questions through voting and ranking using a tool called Mentimeter. Participants were not required to answer any or all questions and their responses were anonymous. The following summaries combine these results along with their feedback collected through conversation throughout the presentation and discussion at the end.

Meeting participants were asked to identify which of the following Eglinton Park user group best describes them (select all that apply):

- 9 CAG members identified as a local resident and park user
- 7 CAG members identified as a member of a residents' association
- 3 CAG members identified as a dog owner
- 2 CAG members identified as a member of a sporting group, organization or association
- 1 CAG member identified as a member of a community group
- 1 CAG member identified as a participant in organized sports in Eglinton Park

Heritage Garden

The Eglinton Park CAG generally preferred Design Concept 2: Cluster of informal seating around large circular planters.

- 1 CAG member selected Design Concept 1: Pollinator garden and central gathering space
- 4 CAG members selected Design Concept 2: Cluster of informal seating around large circular planters
- 3 CAG members indicated that they would appreciate either Design Concept

Participants mentioned that they appreciated the varied and intimate seating options provided in Design Concept 2.

One participant mentioned that as long as the seating areas facilitate connection, they are satisfied. Another mentioned that Design Concept 1 would allow for school groups and others to gather and connect in the space.

Dog Off-Leash Area

Eglinton Park CAG members generally preferred Design Concept 1: Barking Up the Wrong Tree (Nature).

- 4 CAG members selected Design Concept 1: Barking Up the Wrong Tree (Nature)
- 1 CAG member selected Design Concept 2: Ruff Around the Edges (Urban)
- 2 CAG members indicated that they would appreciate either Design Concept
- 1 CAG member selected "None of the above"

The wooden fencing option was selected unanimously by the Eglinton Park CAG.

- 0 CAG members selected "Metal fence"
- 6 CAG members selected "Wooden post and paddle fence with wire mesh infill"
- 1 CAG member selected "Not sure"
- 0 CAG members selected "None of the above"

CAG members ranked their preferred Dog Off-Leash Area play features as follows:

1. Log Tunnel
2. Bridge Climb
3. Agility Bone
4. Agility Stepping Stones

5. Agility Wooden Posts

Participants had mixed feelings about the inclusion of play features in the Dog Off-Leash Area, with some concerns around losing space for dogs to run.

One participant had a suggestion to locate the Dog Off-Leash Area where natural topography exists, rather than creating artificial turf mounds. Further, participants expressed their concerns about whether the artificial turf would be easy to maintain and whether it would retain smells. The Project Team confirmed that the turf is easy to maintain, prevents the area from getting muddy and with an irrigation system, does not retain smells.

The location of the dog fountain was discussed verbally by CAG members, and as a result, the interactive polling tool was not used for this park element. Participants were in favour of the dog fountain being located outside of the Dog Off-Leash Area so that dogs walking through the park can take a drink without having to enter the area.

Central Spine Path

CAG members' preferences were split between the two paving options for the Central Spine Path:

- 2 CAG members selected "Concrete Unit Pavers"
- 3 CAG members selected "Decorative Cast-In-Place Concrete"

CAG members were asked to rate the importance of benefits provided by trees planted along the Central Spine Path:

- "Provide the most shade possible" was ranked 4.5 out of 5
- "Be more resilient to environmental stressors" was ranked 4.3 out of 5
- "Produce fruit or flowers" was ranked 3.8 out of 5
- "Mature more quickly" was ranked 3 out of 5
- "Provide greenery during winter" was ranked 3 out of 5
- "Be less likely to emit pollen/allergens" was ranked 3 out of 5

For plant species along the Central Spine Path and in the heritage garden, preferences were divided across two of four options:

- 3 CAG member selected "Plants that attract pollinators such as butterflies, bees, and hummingbirds"
- 2 CAG members selected "Naturalized planting strategies that increase biodiversity, provide natural habitat, and promote climate resilience"
- 0 CAG members selected "Ornamental planting that prioritizes colours and textures"
- 0 CAG members selected "A 'food forest' approach to planting that includes edible plants"
- 0 CAG members selected "I have no preference"

Ecological Placekeeping

Preferences for the approach to ecological placekeeping were divided across the two Design Concepts:

- 3 CAG members selected Design Concept 1: Text cutouts centred at the Heritage Garden
- 2 CAG members selected Design Concept 2: Scattered engraved stones along the path

When asked to share what is most important to them about placekeeping, CAG members provided the following responses:

- Eglinton Park history
- Native history
- Geological history
- Industrial history
- Honour
- Education
- Respect

2.2 Additional Questions and Comments

Throughout the meeting, CAG members asked questions and provided comments on park elements included in Priority Area 1, described below.

Q1: Could the dog park either be expanded slightly or the shape be changed a little so that it leverages the natural topography of the hill, rather than creating artificial topography?

A1: Project Team will take this information back to the City and see what the ramifications of this approach would be.

Q2: Could we ensure that lighting that is placed near the West Stairs are not so bright that they impact the homes nearby?

A2: Yes. They will be bright enough to see the path and stairs, but so bright that they will impact local homeowners. The lighting always points downwards, so there is no upward light pollution.

Q3: I have concerns about noise related to the skate spot and basketball court. How will those be mitigated?

A3: We will be looking at materials that will be the least noisy and considering whether or not lighting will be incorporated. These details are still being worked out.

3.0 Next Steps

Members can send additional ideas, comments, or suggestions to Elijah.Bawuah@toronto.ca.

CAG members will be notified of a final meeting and/or survey in the Summer/Fall of 2023 to review the final design options.

Appendix A: Meeting Slide Deck and Polling Results

Eglinton Park Master Plan Phase 1 Implementation: Design Options CAG Meeting #3

May 31, 2023



Land Acknowledgement

We acknowledge the land we are meeting on is the traditional territory of many nations including the Mississaugas of the Credit, the Anishnabeg, the Chippewa, the Haudenosaunee and the Wendat peoples and is now home to many diverse First Nations, Inuit and Métis peoples. We also acknowledge that Toronto is covered by Treaty 13 with the Mississaugas of the Credit.



African Ancestral Acknowledgement

The City of Toronto acknowledges all Treaty peoples – including those who came here as settlers – as migrants either in this generation or in generations past – and those of us who came here involuntarily, particularly those brought to these lands as a result of the Trans-Atlantic Slave Trade and Slavery. We pay tribute to those ancestors of African origin and descent.



African Ancestral Acknowledgement

The City of Toronto acknowledges all Treaty peoples – including those who came here as settlers – as migrants either in this generation or in generations past – and those of us who came here involuntarily, particularly those brought to these lands as a result of the Trans-Atlantic Slave Trade and Slavery. We pay tribute to those ancestors of African origin and descent.



Meeting Agenda



Welcome



Project Updates



Questions



Next Steps and Adjourn



5
5

Mentimeter

Project Background



5

Project Timeline

Exploring the Options (Concepts) - We are here

Setting the Direction (Preferred Concept) - July 2023

Tender Documents - Fall 2023

Construction Start - Spring 2024

Construction Complete - Fall 2024



The Master Plan

The City completed the Eglinton Park Master Plan in 2019, which sets a long-term vision for the park. The Master Plan will be used as a guide for a phased approach of park improvements subject to stakeholder and public consultation and available funds.

The Master Plan was a participatory effort and resulted in a plan focused on the park landscape and environment (it does not include the playground, buildings, community centre, arena or parking lot).

The plan was recently updated to balance the needs of all park users based on what we heard and learned throughout our engagement.



Updated Master Plan

March 2023

- | | |
|--|--|
| <ol style="list-style-type: none"> 1. TREED FORECOURT 2. RAISED ROADBED / SHARED SPACE 3. PEDESTRIAN PATH INCLUDING INTERMITTENT ADULT EXERCISE EQUIPMENT 4. PAVED NATURE PATH INCLUDING INTERMITTENT ADULT EXERCISE EQUIPMENT 5. TENNIS COURT / ICE RINK (EXISTING) 6. DOG OFF-LEASH AREA 7. EXISTING BASEBALL DIAMOND 8. EXISTING EGLINTON PARK HERITAGE GARDEN 9. WATER PLAY FEATURE 10. LAWN; 2 EXISTING MINI SOCCER FIELDS DURING PERMITTED HOURS 11. LAWN; 1 STANDARD SOCCER PITCH DURING PERMITTED HOURS 12. PERCOLA / SHADE STRUCTURE 13. PLAZA AREA 14. PLAYGROUND (EXISTING MODIFIED PAVING) INCLUDING NEW SANDBOX 15. SENSORY GARDENS 16. NORTH TORONTO MEMORIAL ARENA 17. NORTH TORONTO MEMORIAL COMMUNITY CENTRE | <ol style="list-style-type: none"> 18. MEMORIAL GARDEN 19. NORTH TORONTO MEMORIAL COMMUNITY CENTRE 20. OUTDOOR POOL 21. PLAZA FORECOURT 22. SKATE SPOT 23. HISTORY THEMED GARDENS 24. GRASS BERM 25. FENCED BASKETBALL 26. WATER WALL FEATURE / ARTWORK 27. FIRE PIT 28. DOG FOUNTAIN 29. SEATING OVERLOOKING RINKS / COURTS 30. NEW PLANTING AND STEP CONNECTOR 31. WIDE STAIR ACCESS 32. NEW STAIRWAY IN NEW LOCATION WITH NEW LIGHTING 33. RAISED PLANTER WITH EXISTING TREES 34. PARK SIGN 35. PATIO / CAFE SPILL OUT AREA 36. WIDENED PATH ENTRANCE 37. EXISTING FIELD HOUSE WITH NEW TOOL STORAGE 38. ACCESS TO CHLORINE TANKS 39. FENCE |
|--|--|



Priority Areas

The Master Plan identifies four priorities areas that will help guide implementation, pending current and future budget availability.

Priority Area #1

- North/south pathway from Eglinton Avenue to Roselawn Avenue
- Dogs off-leash area
- Skateboard stop (small skateboarding area)
- Garden Beds
- Central plaza area with water feature
- Shade structures
- Improvements to the existing stairs at Oriole Parkway

Priority Area #2

- Eglinton forecourts
- Retaining walls
- Garden Beds
- Basketball court
- Park signage

Priority Area #3

- Roselawn treed forecourt
- Improved baseball diamond
- Mini soccer fields
- Berm/natural bleacher

Priority Area #4

- Seating overlooking existing rinks and courts
- Shared roadway
- Café spill-out zone at Community Centre



Phase 1 Implementation: Scope of Work

Phase 1 of the Master Plan implementation is based on Priority Area 1 and available funds. Phase 1 includes:

1. East Path Improvements (Complete)
2. Central Spine Path
3. Gardens
4. Dog Off-leash Area
5. Skate Spot
6. West Stair Replacement



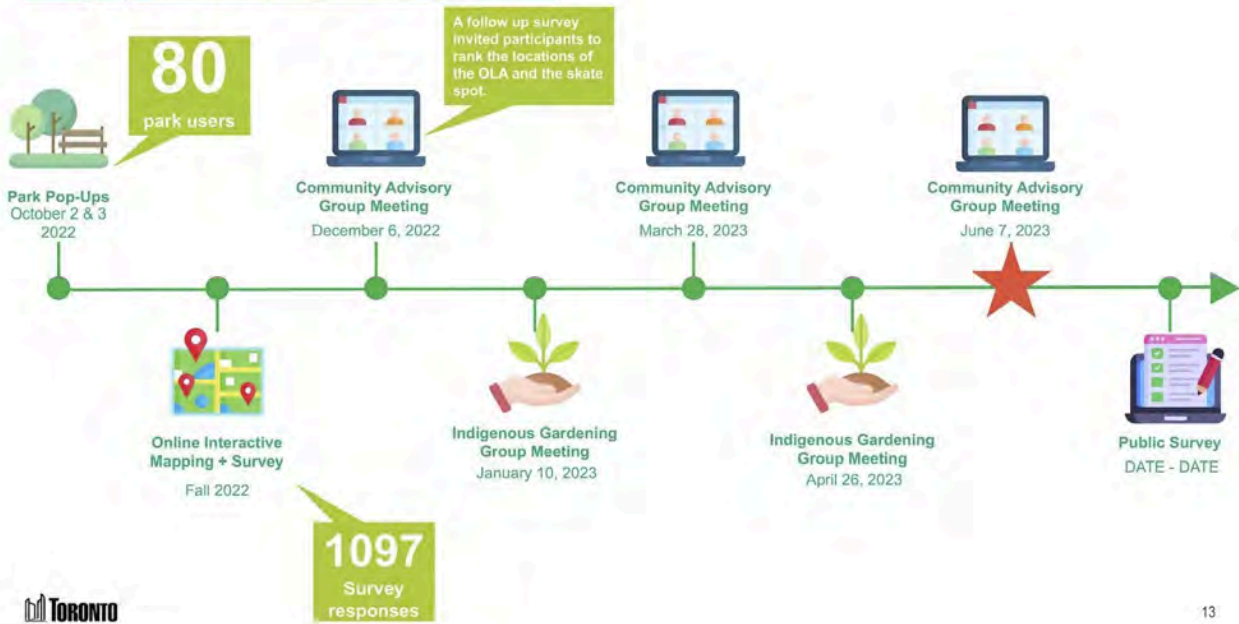
Mentimeter

What We Heard



12

Engagement Overview To-Date



13

What We Heard

We know this park is beloved and well used, and many are happy to see the improvements. We have also heard concerns over impacts to existing permitted areas and the recreation/open field, and worked to **update the Master Plan** to better balance the users and needs of the park.

Dog Off-Leash Area location was preferred by the majority of those engaged. This location complements the existing layout without compromising the existing recreation fields.

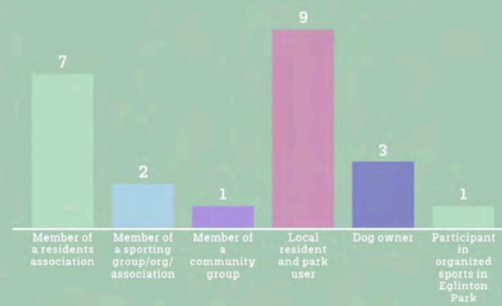
The Indigenous folks and gardening group members shared ideas about how to improve their space, and provided insights into the history, planting and placekeeping on the site.

Skate Spot location was preferred by the majority of those engaged. This location activates the street edge, is easily accessible by TTC, highly visible and compliments the future basketball court.



Phase 1: Concept Options

Throughout the presentation we're going to ask you to answer questions using this tool. First, tell us what best describes you!



Concept Plan

Today, we will present two concepts for certain areas of the park, and collect your input and feedback to inform our final designs. We'll share updates and concepts for the following components:

1. East Path (complete)
 2. Central spine path
 3. Heritage gardens
 4. Dog off-leash area
 5. Skate spot
 6. West stair replacement
- Placekeeping (location TBD)



East Path



Focal Point - Heritage Garden

The Heritage Garden's will become a focal point for the park, at the nexus of pathways and activity. We have two approaches to this Heritage Garden to share today.

Concept 1 is inspired by sunflowers and creates a large shared space for gathering.

Concept 2 offers diverse plantings to support pollinators and informat seating for smaller groups.



Focal Point - Heritage Garden

Concept 1

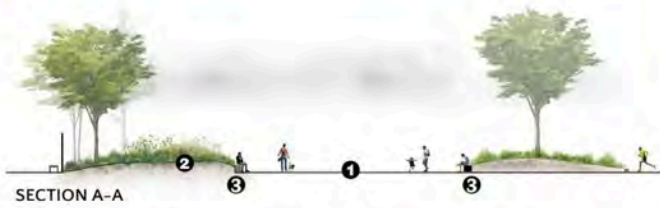


Concept 2



Focal Point - Heritage Garden

Concept 1



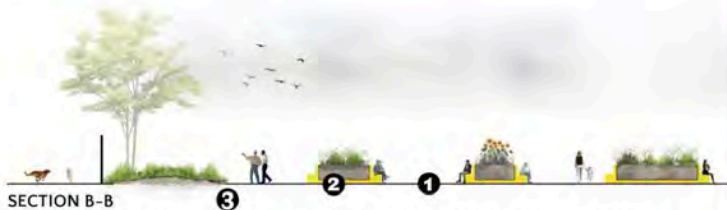
Imagines the central heritage garden as a pollinator garden, which focuses on attracting and supporting pollinators such as butterflies, bees, and hummingbirds. Additionally, Design Concept 1 includes a central gathering space, with textured paving inspired by sunflowers, which hold significance for many Indigenous communities.

1. Gathering Area with Sunflower Motif Paving
2. Pollinator Garden
3. Bench/Seatwall
4. Gate from Parking Area



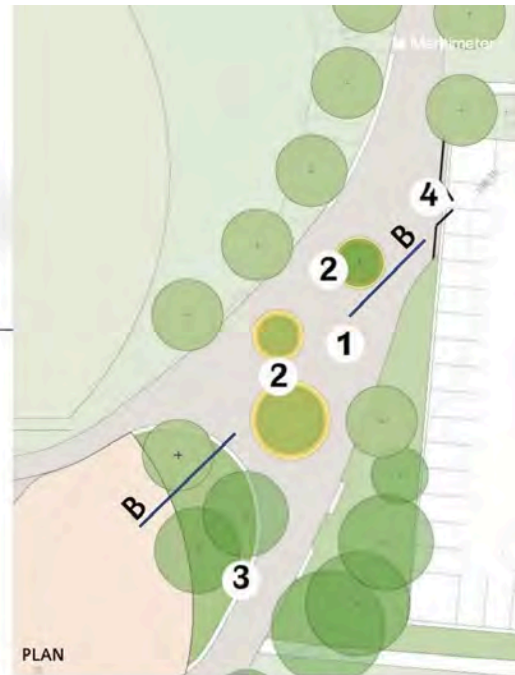
Focal Point - Heritage Garden

Concept 2

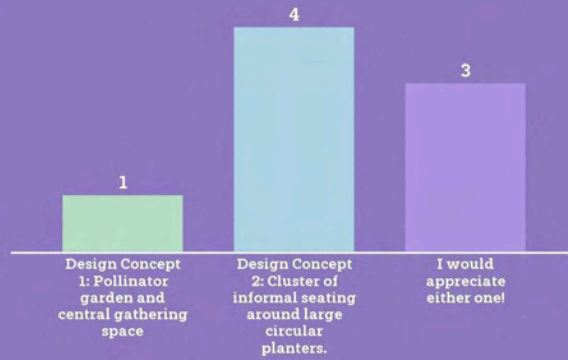


Imagines the central heritage garden as a cluster of informal seating around large circular planters, creating a buffer between the walkway and the dog off-leash area

1. Heritage Garden Design 2 Legend:
2. Plaza Space
3. Coloured Planter Islands with Sunflower Gardens and Seating
4. Bench/Seatwall
5. Gate from Parking Area



Which approach to the heritage garden do you prefer?



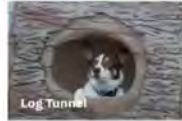
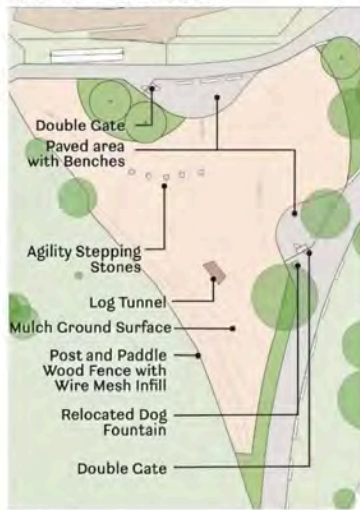
Dog Off-Leash Area

There are two concept designs for the dog off-leash area. Both design concepts are the same size (approximately 2000 sq m) and offer a variety of features including a dog fountain and double gated entries.

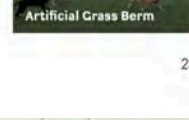
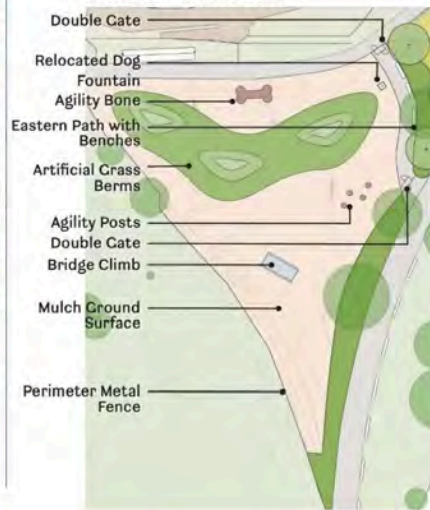


Dog Off-Leash Area (2000m2)

Concept 1: Barking Up the Wrong Tree (nature themed)



Concept 2: Ruff around the Edges (urban themed)



23

Dog Off-Leash Area: Concept 1

DOLA Concept 1 is nature themed and includes

1. Two concrete areas with seating at the DOLA entrances
2. A mulch ground surface
3. A post and paddle wooden fence with wire mesh infill
4. A log tunnel
5. Agility stepping stones



Dog Off-Leash Area: Concept 2

DOLA Concept 2 is urban themed and includes

1. A path along the Eastern edge with benches
2. Mulch Ground Surface
3. Metal fence
4. Bridge Climb
5. An agility bone
6. Agility posts
7. Artificial grass mounds

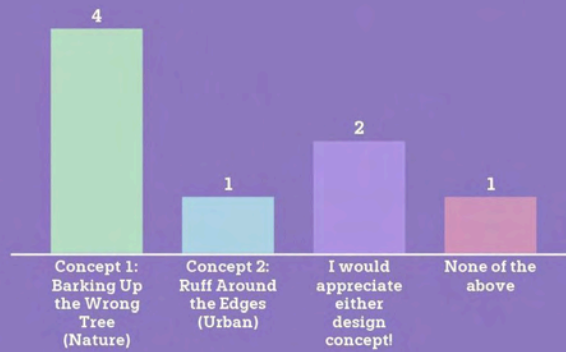


TORONTO

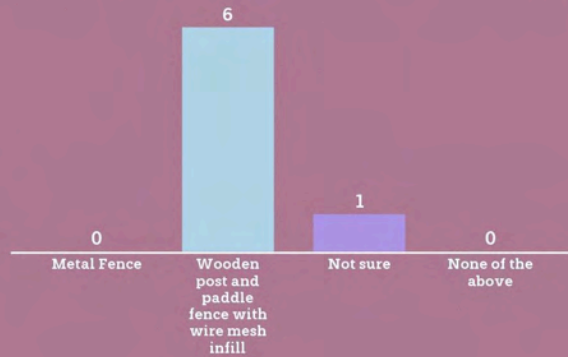


Mentimeter

Which layout for the dog off-leash area do you prefer?



Which type of fencing for the perimeter of the dog off-leash area would you prefer?



Rank your favourite features to be included in the dog off-leash area.



Would you prefer the dog fountain be located inside the fenced area, or outside?

Inside



Outside



Anything else you want to share about the dog off-leash area? 2 Answers

Nothing else

Ultimately it's up to the dog owner to manage their dogs. Avoid obviously hazardous activities.



Central Spine Path

The central spine pathway provides opportunities for paving, seating and planting. The pathway is indicated by #2, and runs from the north-east corner of the park to the south-west corner of the park.



Central Spine Path: Paving

Paving throughout the Heritage Garden and along the Central Spine Pathway offers opportunities for paving to bring beauty to the space. Gathering areas (like the heritage gardens) in the central spine may be highlighted through decorative concrete or unit pavers.



Gathering Areas on the Central Spine Path: Paving

Concept 1: Concrete Unit Pavers



Concept 2: Decorative Cast-in-place Concrete



Which type of paving would you prefer for the Central Spine Path?

Tiled Unit Pavers

2

Cast-In-Place

3

Mentimeter

5
▲

Central Spine Path: Tree Walk

New Trees planted along the central spine path create a Tree Walk featuring prominent native trees within the park. Species names are engraved into the path paving in English and indigenous languages to encourage species identification and environmental education while fostering community appreciation and engagement with local ecology.

Acer saccharinum
Silver Maple

Acer saccharum
Sugar Maple

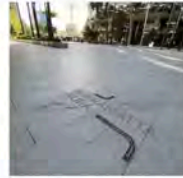
Gleditsia triacanthos
Honeylocust

Gymnocladus dioica
Kentucky Coffeetree

Juglans nigra
Black Walnut

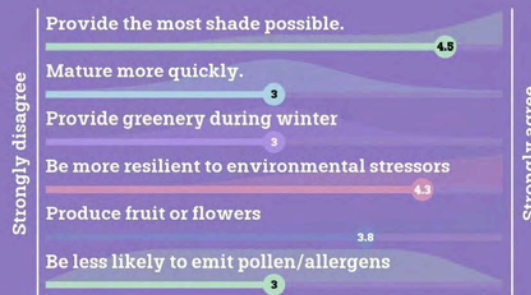
Quercus rubra
Northern Red Oak

Tilia cordata
Littleleaf Linden



Mentimeter

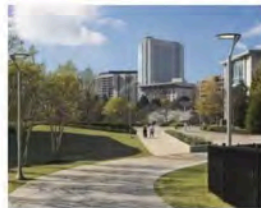
What is important to you when considering the trees along the central spine path? Trees should...



When thinking about plant species along the Central Spine Path and the heritage garden, what matters most?

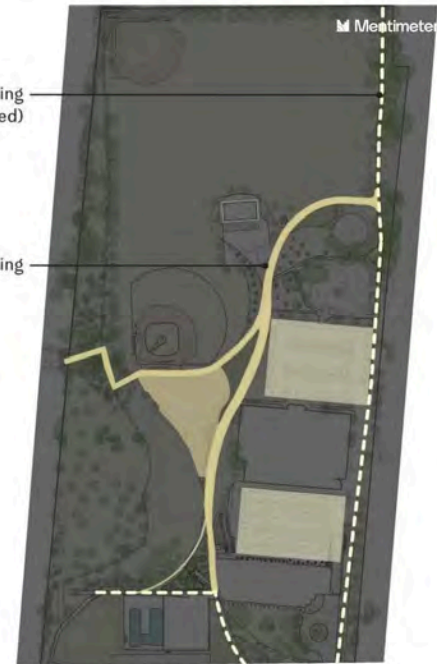


Lighting



Existing Lighting (dashed)

New Lighting



Ecological Heritage Placekeeping On-Site

What is Placekeeping?

Placekeeping is the active care and maintenance of a place and its social fabric by the people who use a place. It's about recognizing the inherent rights of all our relations and considering our responsibilities to a place now and into the future.

Eglinton Park's Heritage

Eglinton Park's topography is marked by the historic Mud Creek, a tributary of the Don River which carved the site and created the landforms that exist today. Placekeeping provides an opportunity to reflect, honour and share the ecological history of the park.

As Eglinton Park also sits on the traditional territories of many First Nations, Indigenous Placekeeping opportunities are also being explored by the design team with the input of Indigenous design advisors and community members.

There are two placekeeping concepts to highlight the ecological heritage of the site.



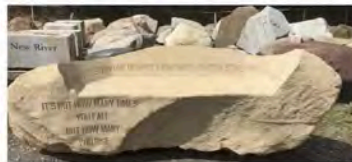
Historic Creek tells a story along its central spine

Ecological Heritage Placekeeping On-Site

Concept 1 tells the story of the lost Mud Creek through etching and text cutouts, centred around the heritage garden.



Concept 2 envisions stones, reminiscent of river stones, scattered along the central spine path with engravings.



Which ecological heritage placekeeping approach do you prefer?

Text cutouts centred at the heritage garden



Scattered engraved stones along the path



What's most important to you about placekeeping? Share your thoughts in 3 key words.

eglinton park history
native history
geological history
industrial history
honour
education
respect



Heritage Garden Fencing

Steel fence with engraved botanical elements that reinforce the ecological and indigenous heritage of the site



Skate Spot

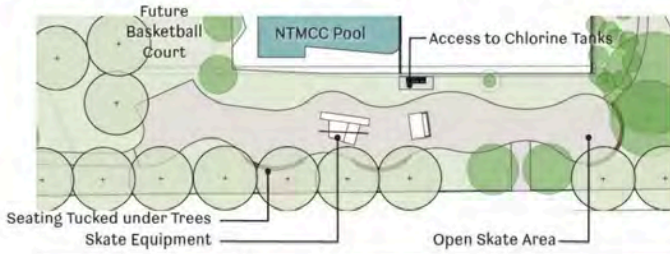
The skate spot will be approximately 600 sq m, and can include a variety of features.

Engagement for the skate spot will occur with the skateboarding community to select the best design concept and possible features to include.

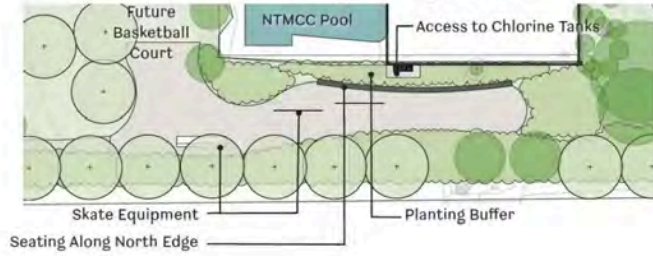


Skate Spot (600m2)

Concept 1: Seating Tucked into Tree Canopy



Concept 2: North Seating Facing South



Possible Skateboard Elements



Artwork Integrated into Skate Spot

(Opportunity for Indigenous Mural Integration)

Concept 1: Intentional Mural work within Skate Spot



Concept 2: Graffiti/Tagging by Community in coordination with Parks



36

West Stair Replacement



Mentimeter

Is there anything else you would like to share about the Central Spine Path?

1 Answer

I love the idea of honouring the Indigenous history of the area that dates back to the 1400's. This is important for our community.



Are there any questions, thoughts or comments you'd like to share?

2 Answers

@Stephanie STEPS Public Art may be an organization to engage for the skate park. They're a charitable org that works with artists to do public art - <https://stepspublicart.org/about/>

On the new stairs, will the path continue north through the woods. It is used as a walking path.

2

Review

1. East Path (complete)
2. Central Spine Path
 - Paving
 - Planting & Species
 - Lighting
3. Heritage gardens
 - Concept 1: Pollinator + Gathering
 - Concept 2: Clustered Seating
4. Dog off-leash area
 - Concept 1: Nature Themed
 - Concept 2: Urban Themed
5. Skate spot
6. West stair replacement
7. Placekeeping
 - Concept 1: Cutouts around the heritage garden
 - Concept 2: Etched scattered stones



Next Steps

- Visit www.toronto.ca/EglintonPark to fill out the survey. Please circulate the survey to your networks! The survey is open until June 18th
- Members can send additional ideas, comments, or suggestions to Elijah.Bawuah@Toronto.ca
- CAG will be notified of a final meeting and/or survey in the Summer/Fall of 2023 to review the final design options.



Thank you!



prepared by SAFFY

June 20, 2023