

North Park Improvements

Preliminary Design Options
Public Meeting
December 5, 2023



Land Acknowledgement

We acknowledge the land we are meeting on is the traditional territory of many Nations including the Mississaugas of the Credit, the Anishinabeg, the Chippewa, the Haudenosaunee and the Wendat peoples and is now home to many diverse First Nations, Inuit and Métis people. We also acknowledge that Toronto is covered by Treaty 13 with the Mississaugas of the Credit.



Councillor Frances Nunziata

Ward 5 York South-Weston



Today's Meeting Agenda



The **purpose** of this meeting is to **inform** the community on **three design options** and **gather feedback**.



Welcome and introductions



Agenda

1. Project Overview
2. Park Location and Context
3. Design Options and Equipment Overview
4. Feedback
5. Next Steps





Welcome and Introductions

Project Team



**Project Management
and Engagement Leads**
**City of Toronto,
Parks Forestry and Recreation**

Rachel Weston
Senior Project Coordinator

Ariel Stagni
Construction Coordinator

Rosemary McManus
Senior Public Consultation Coordinator

Design Consultant
Harrington McAvan LTD

Rich McAvan
Principal





City of Toronto, Parks Forestry and Recreation

Graham Parsons

General Supervisor, Parks Operations

Derrick White

General Supervisor, Parks Technical Services

Shahn Kahn

Supervisor, Parks Maintenance and Construction





Project Overview

Project Timeline

** The timeline is subject to change.*



Pre-Engagement/ Visioning Phase 2021-2022

This phase included pre-engagement with jurisdictional authorities and the community working group initiated by the Councillor's Office to gather input to inform primary scope, jurisdictional requirements, and budget for the project.

Community Working Group Meetings were held on:

- June 24, 2021
- June 6, 2022

Jurisdictional Authorities for this location include:

- PF&R Operations and Technical Services
- PF&R Urban Forestry
- Toronto Regional Conservation Authority
- Metrolinx

Vision Statement

Informed by the engagement completed to date, the Project Team has developed the vision statement below to serve as a guiding framework for the project:

The North Park improvements will create a fun and safe recreation area at the north end of the park that will accommodate a variety of activities and age groups.

Public Engagement Plan



** The timeline is subject to change.*

Goal

Activities

Outcome

Exploring Options

Present design options to the community and gather feedback to develop a preferred design.

- Community Working Group Meeting
November 20, 2023
- Public Meeting
December 5, 2023
- Online Survey
November 27-December 17

- Selection of a Preferred Design Option

Fall 2023

Setting the Direction

Communicate detailed concept design.

- Community Working Group Meeting
- Setting the Direction Survey
- Website Update
- Email Blast

- Refined Preferred Design

Early Winter 2024

Final Design & Construction Updates

Publicize the final plan and provide updates regarding construction schedule, and opening date

Communications via:

- Signage
- Web updates
- Email updates

- New Park Amenities for community enjoyment!

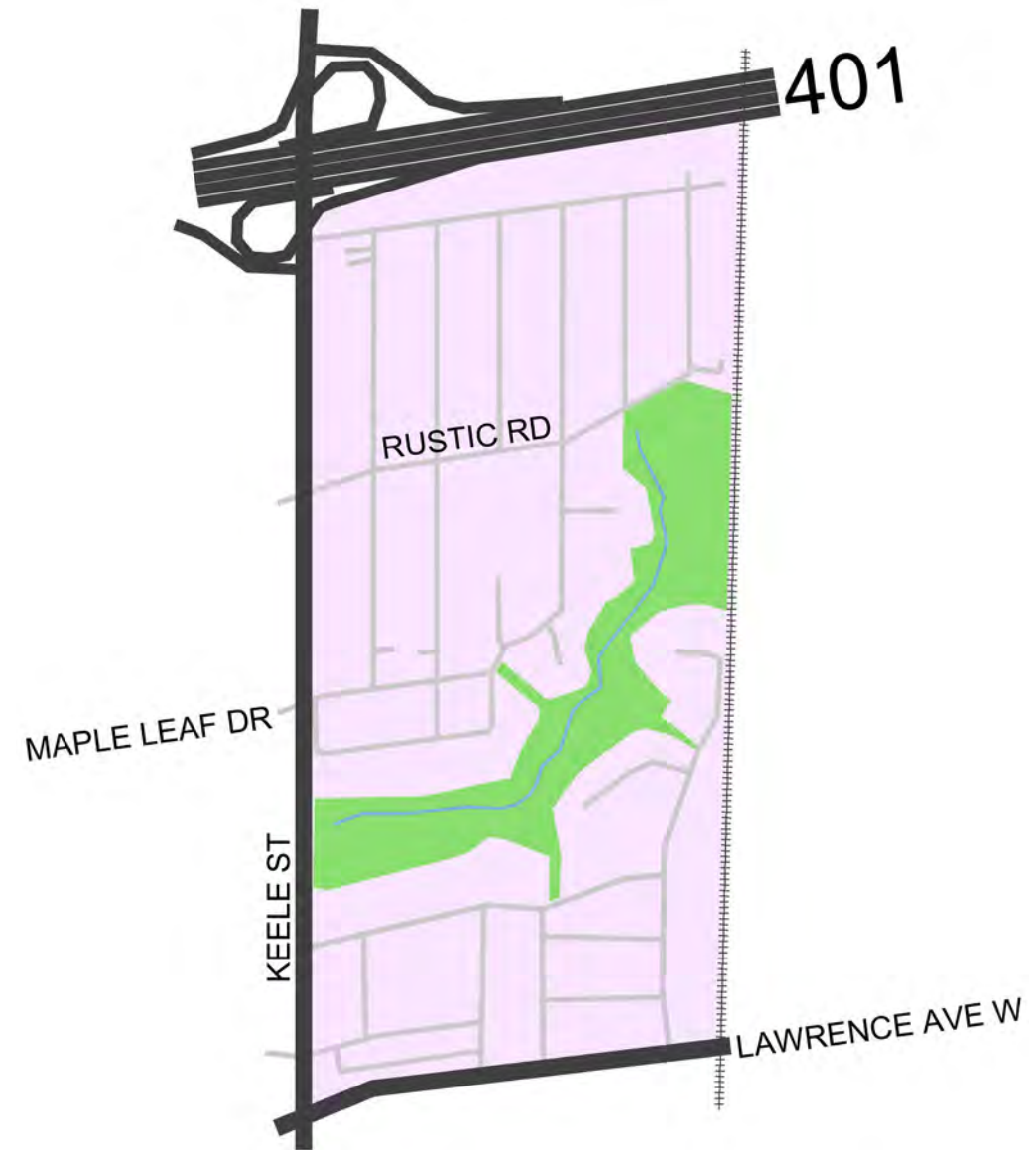
Late Winter 2024



Park Location and Context

Site Location

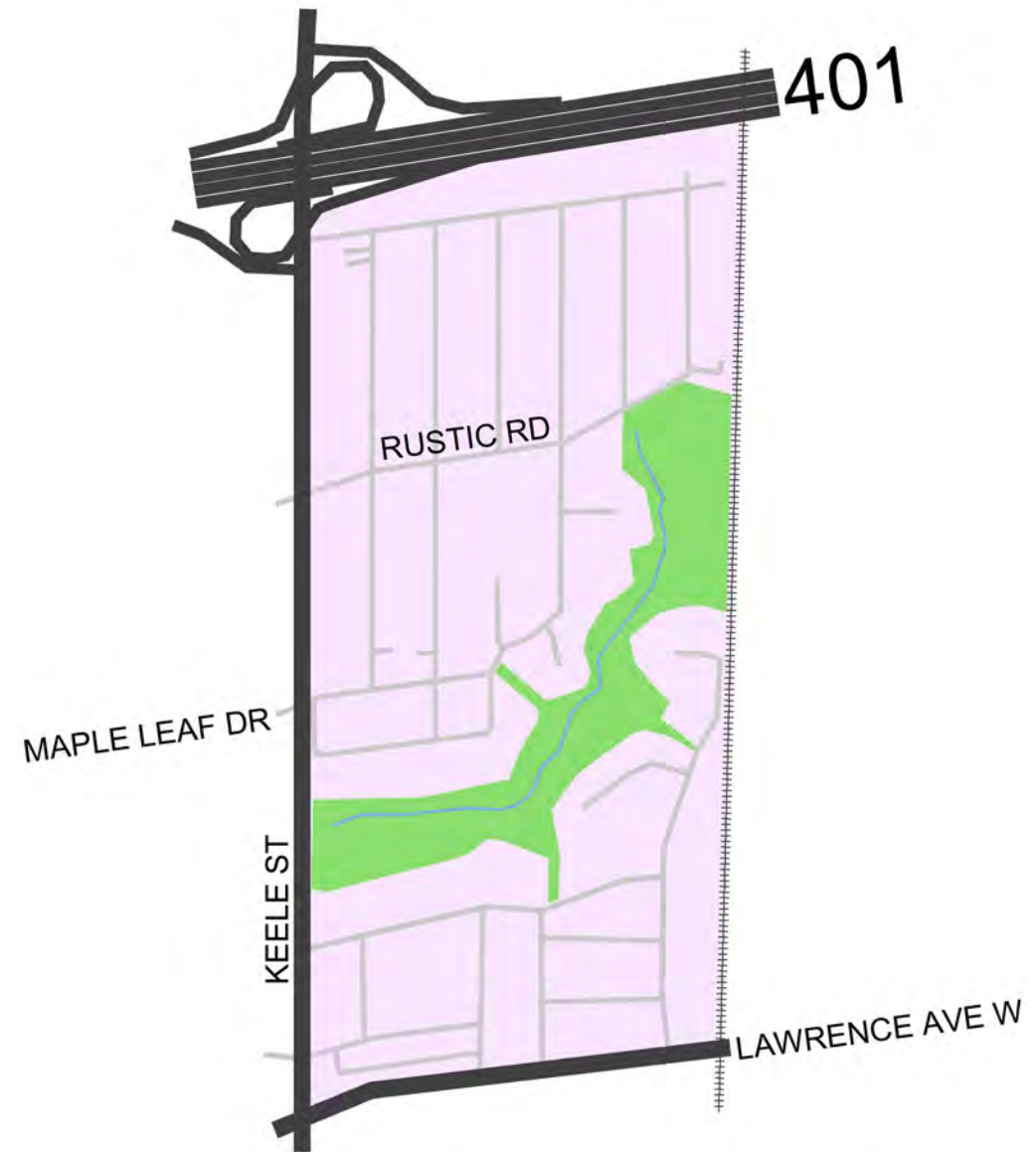
- North Park is located at 587 Rustic Road in the North Park Neighbourhood (Ward 5 York South Weston).
- Shown here in green, North Park is a 10.8 hectare park located in the centre of the neighbourhood.
- The main park access point is from Rustic Road.
- The Park is set in a forested ravine that connects to neighbouring streets with secondary access points at Keele St., North Dr., Cornelius Dr., and Treelawn Pkwy.



Site Location

Key features of North Park include:

- A creek (channelized)
- Paved access road and trail system complete with pedestrian bridges
- 2 asphalt tennis courts

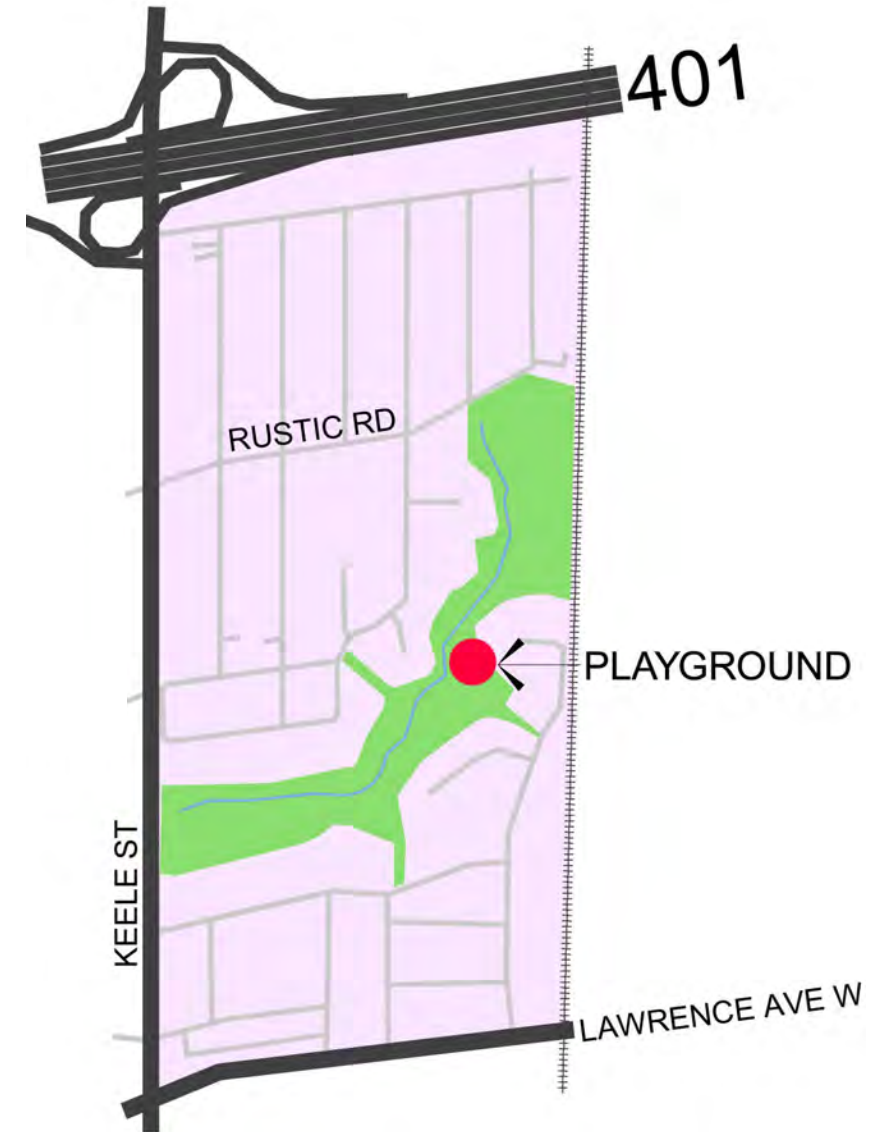


Site Location

Key features of North Park include:

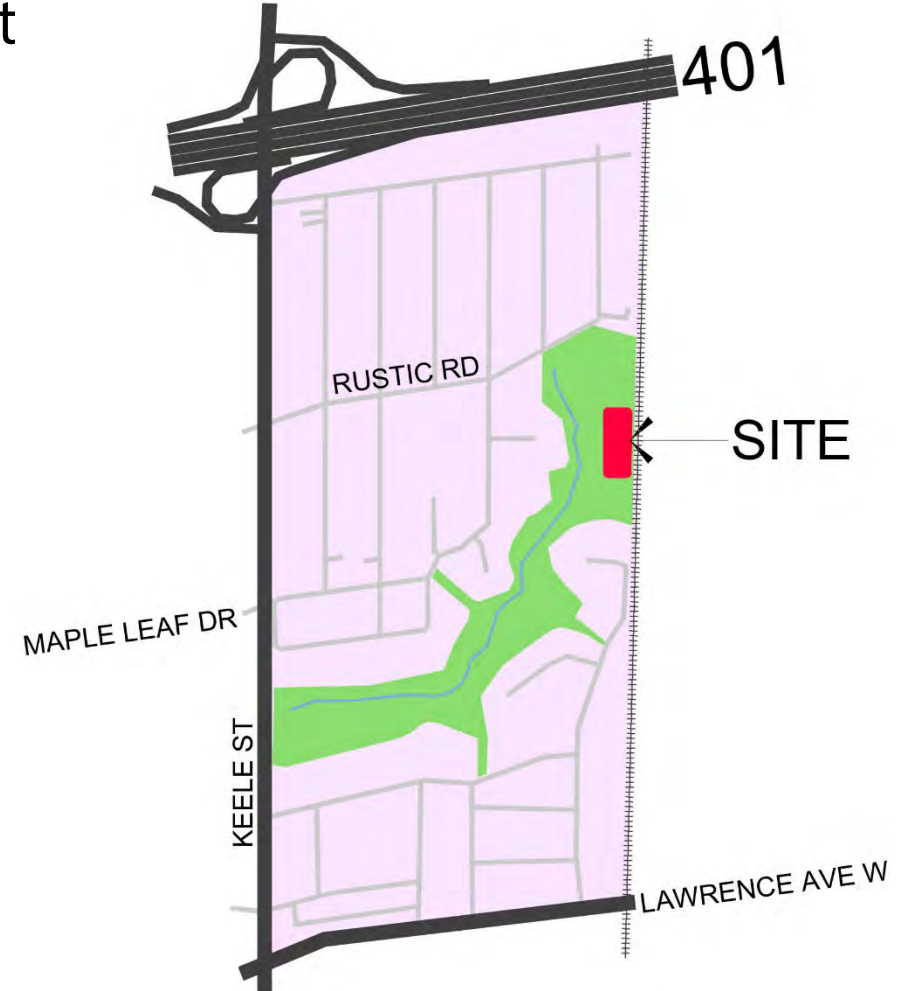
- A small playground and 1 pedestrian light

The existing playground is very close to the creek and is subject to periodic flooding. Flooding prevents use of the playground, damages playground equipment and washes out the surfacing material, which creates additional maintenance issues and costs.



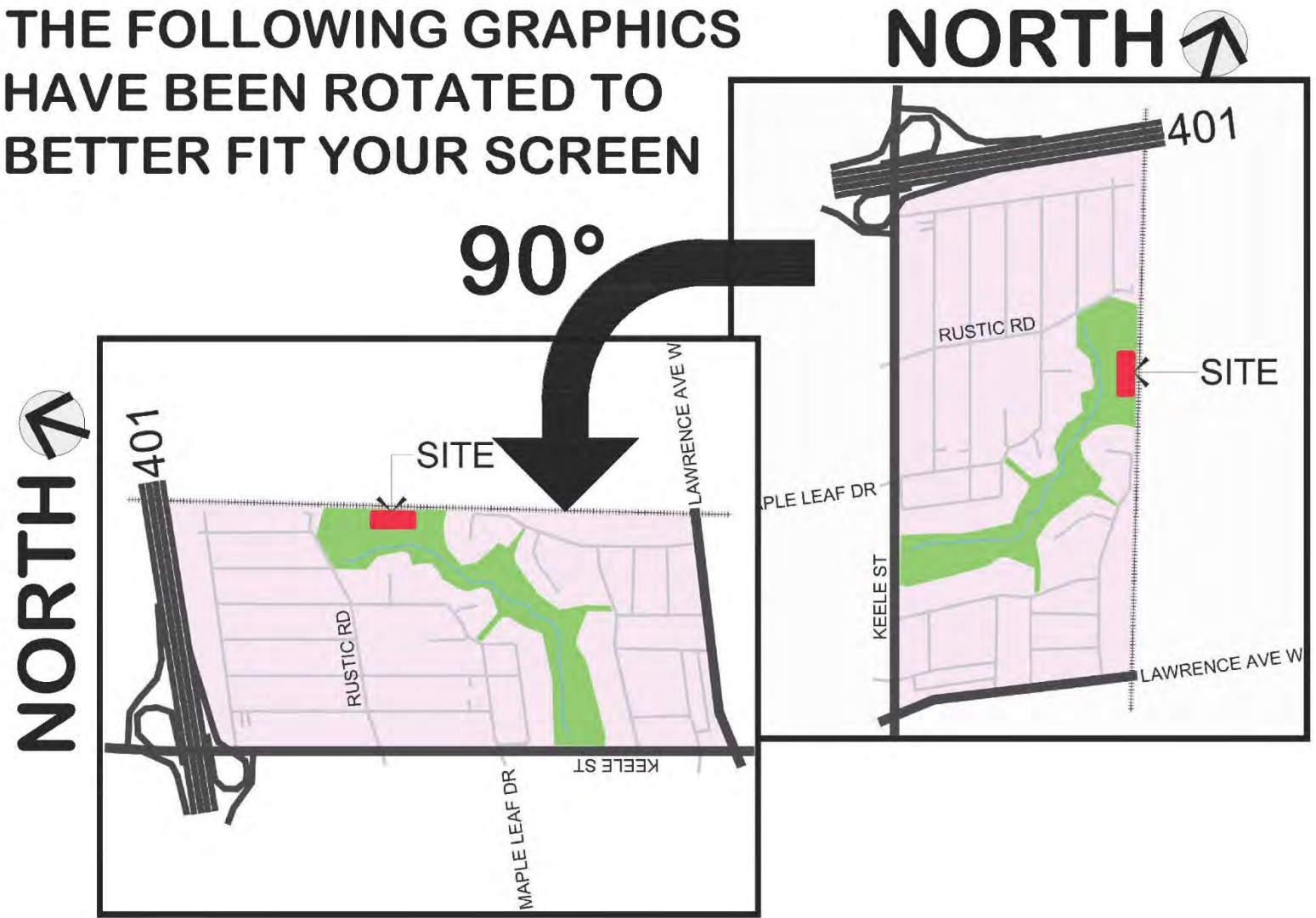
Subject Site

Today, we're here to talk about the redevelopment of the area around the 2 existing asphalt tennis courts in the northeast portion of North Park.



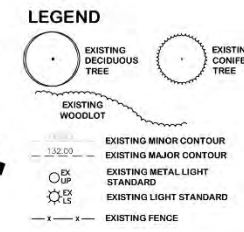
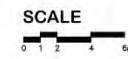
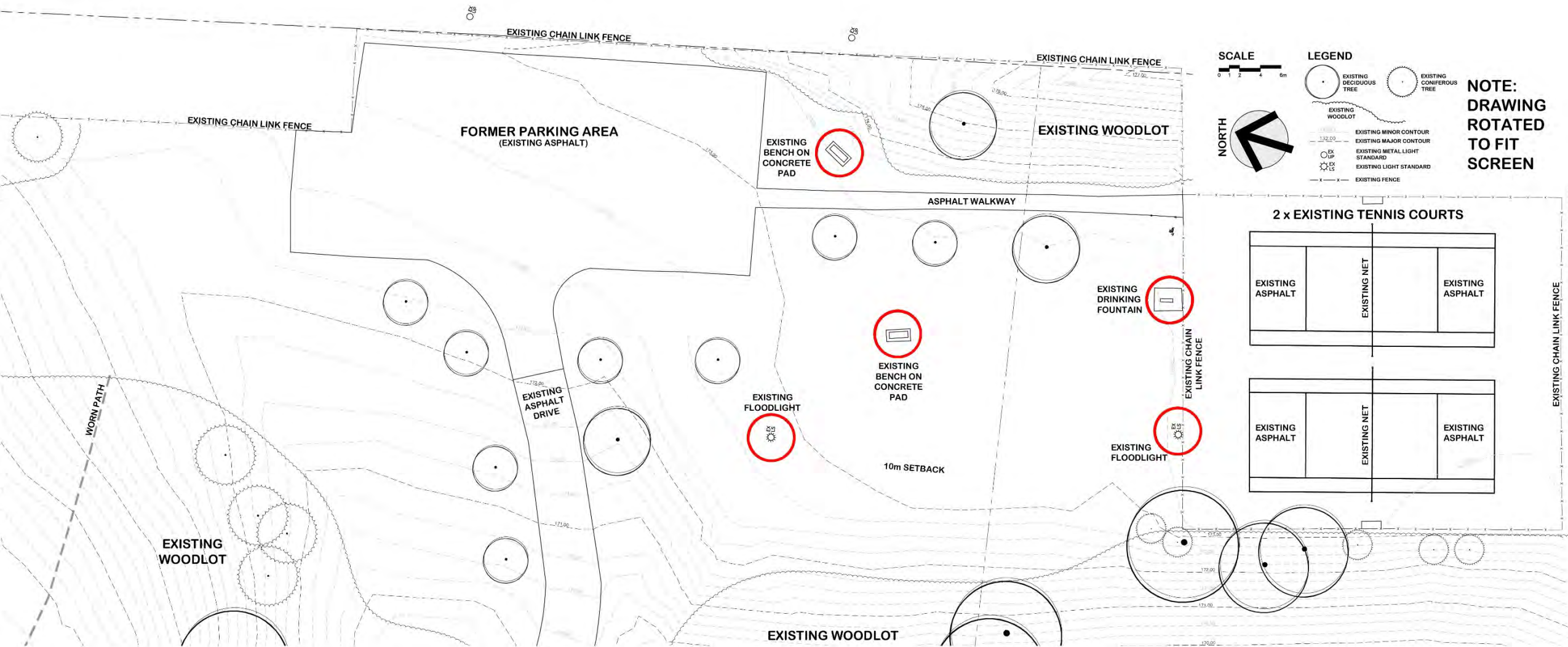
Graphic Rotation

THE FOLLOWING GRAPHICS
HAVE BEEN ROTATED TO
BETTER FIT YOUR SCREEN

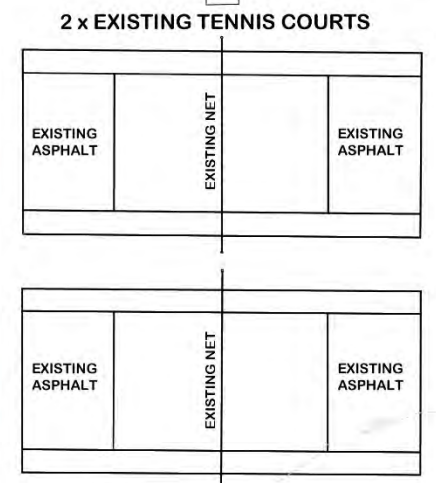


Existing Features

The Subject Site is approximately 5,000m² in size (0.5 HA).



NOTE:
DRAWING
ROTATED
TO FIT
SCREEN



Existing Features

Currently, the Subject Site includes:

- Asphalt drive up from Rustic Road to an unused asphalt parking pad (park is now closed to cars)
- 2 asphalt tennis courts
- Flood lighting, one for the tennis courts and one for the former bocce court area (the bocce courts have been removed)



Existing Features

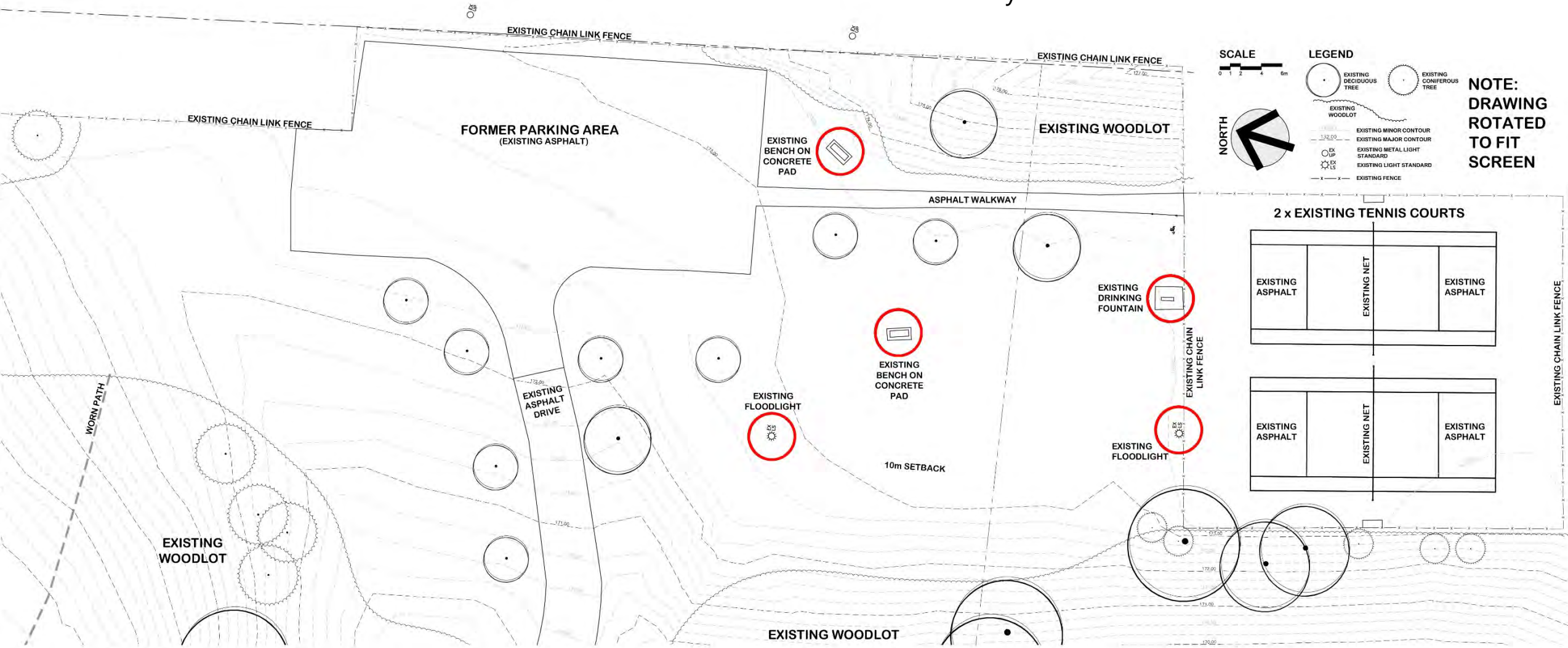
The Subject Site also includes:

- 2 benches
- Asphalt walk connecting the parking pad to the tennis courts
- Drinking fountain (not currently working)
- Mature trees (individual and tree groupings) and open sodded areas



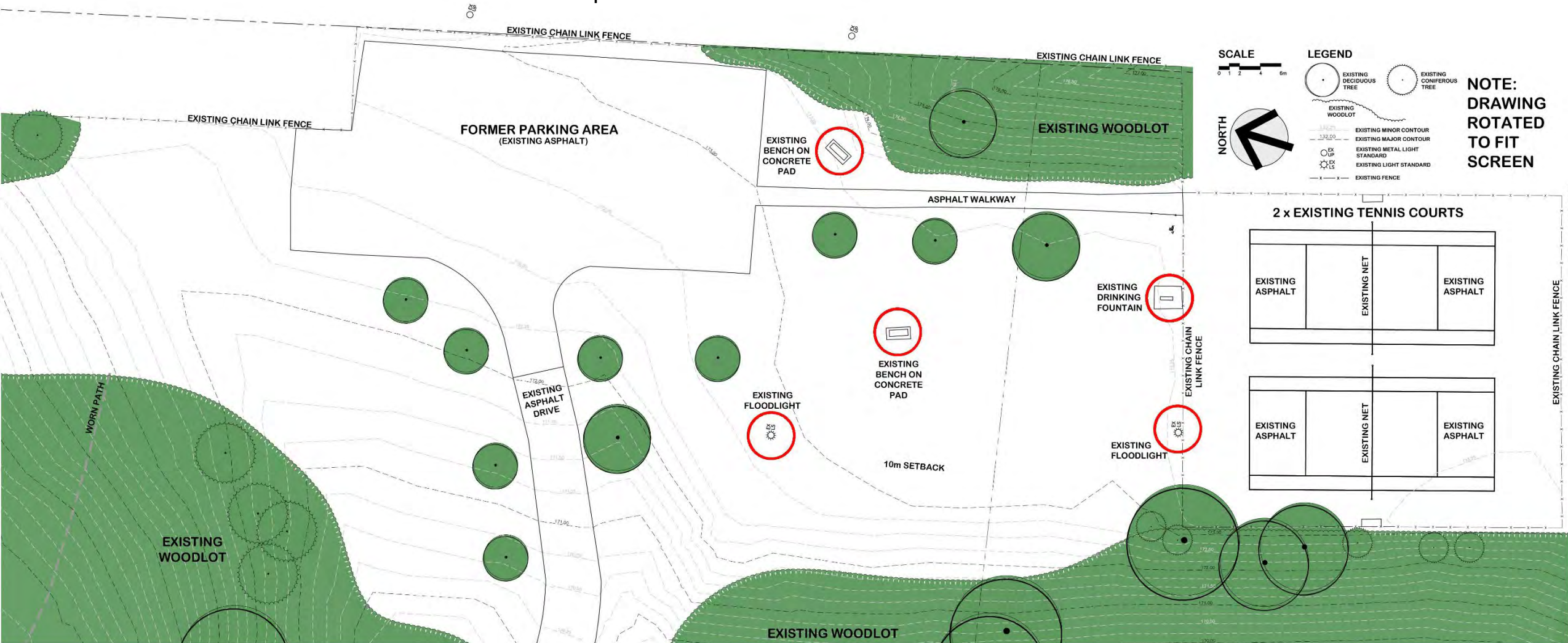
Existing Features

As per pre-consultation with Urban Forestry, Ravine and Natural Feature Protection, any existing significant vegetation within 12m of the work area will be inventoried and assessed by a certified arborist.



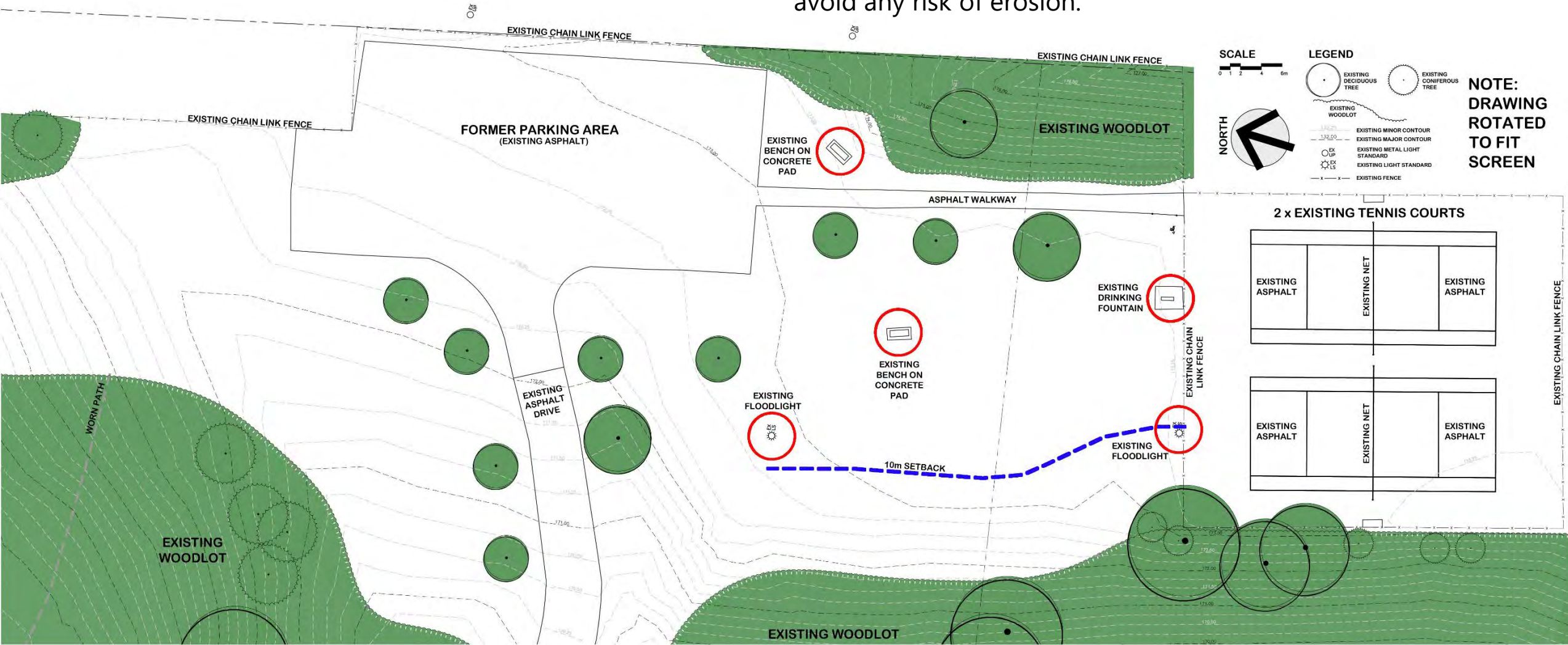
Existing Features

The tree groupings within and next to the work area will not be impacted. Some smaller individual trees within the work area **may** be impacted. Any lost trees will be replaced with new native trees.



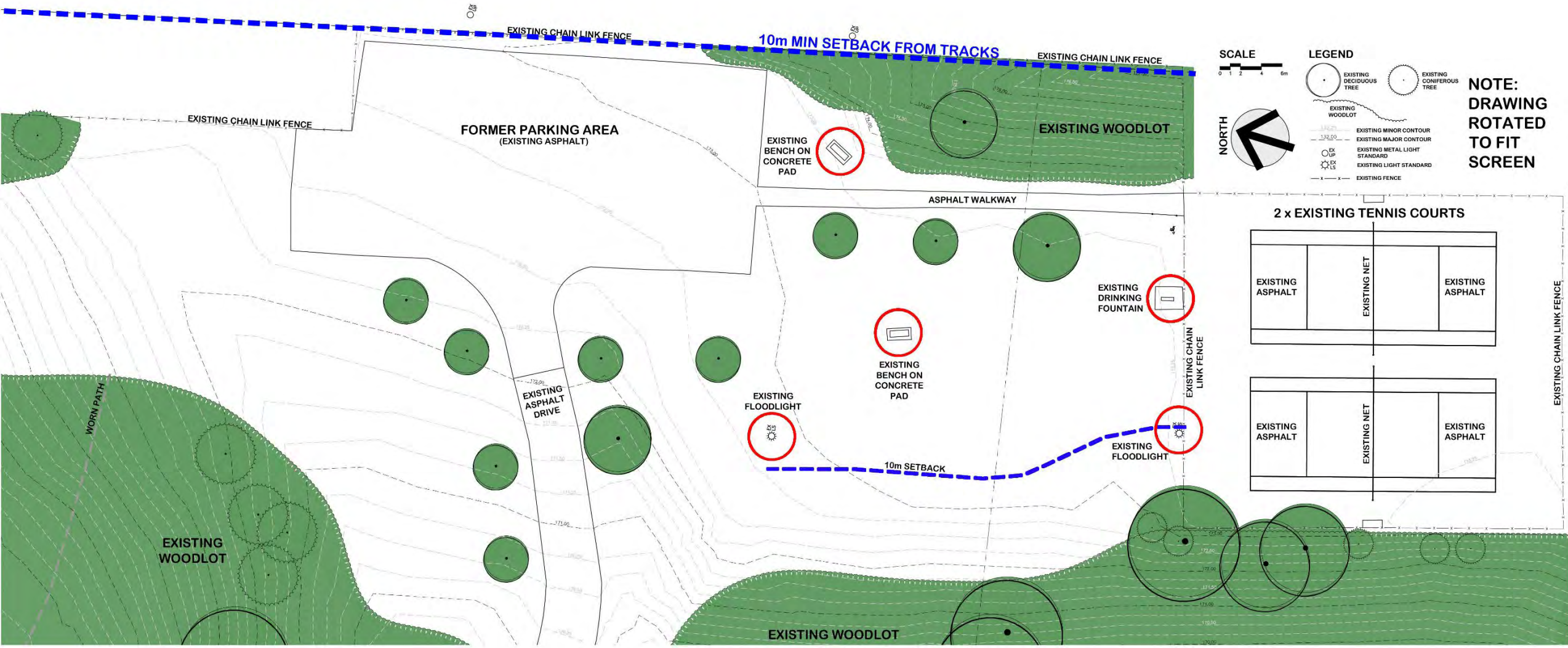
Existing Features

TRCA has requested that the new work be kept back a minimum of 10m from the existing slope to the southwest to avoid any risk of erosion.



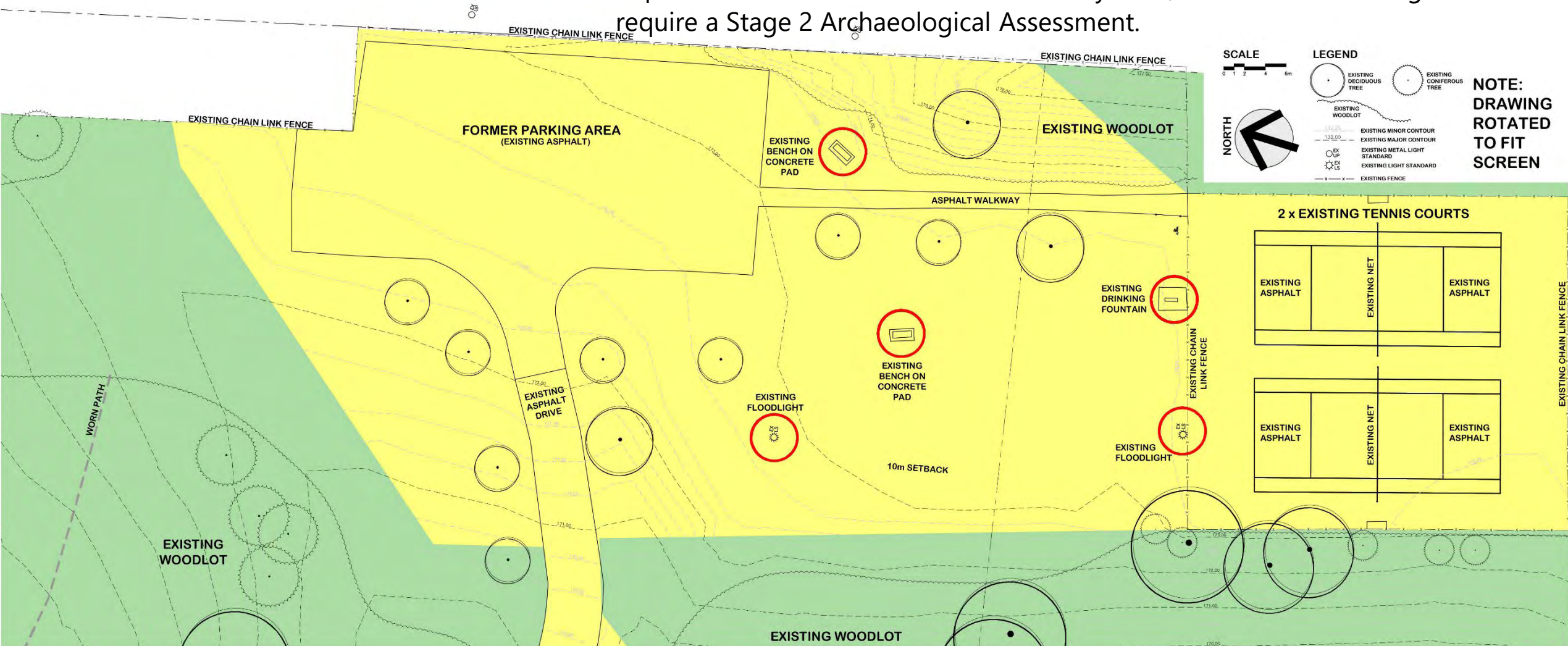
Existing Features

The Subject Site is +10m from the closest set of tracks. The need for a Metrolinx work permit is not automatic at that distance.



Existing Features

A Stage 1 Archaeological Assessment was completed in May 2023. That report has cleared the area in shown in yellow for redevelopment. Current improvements are limited to the areas in yellow; the areas shown in green would require a Stage 2 Archaeological Assessment.



Park Improvements

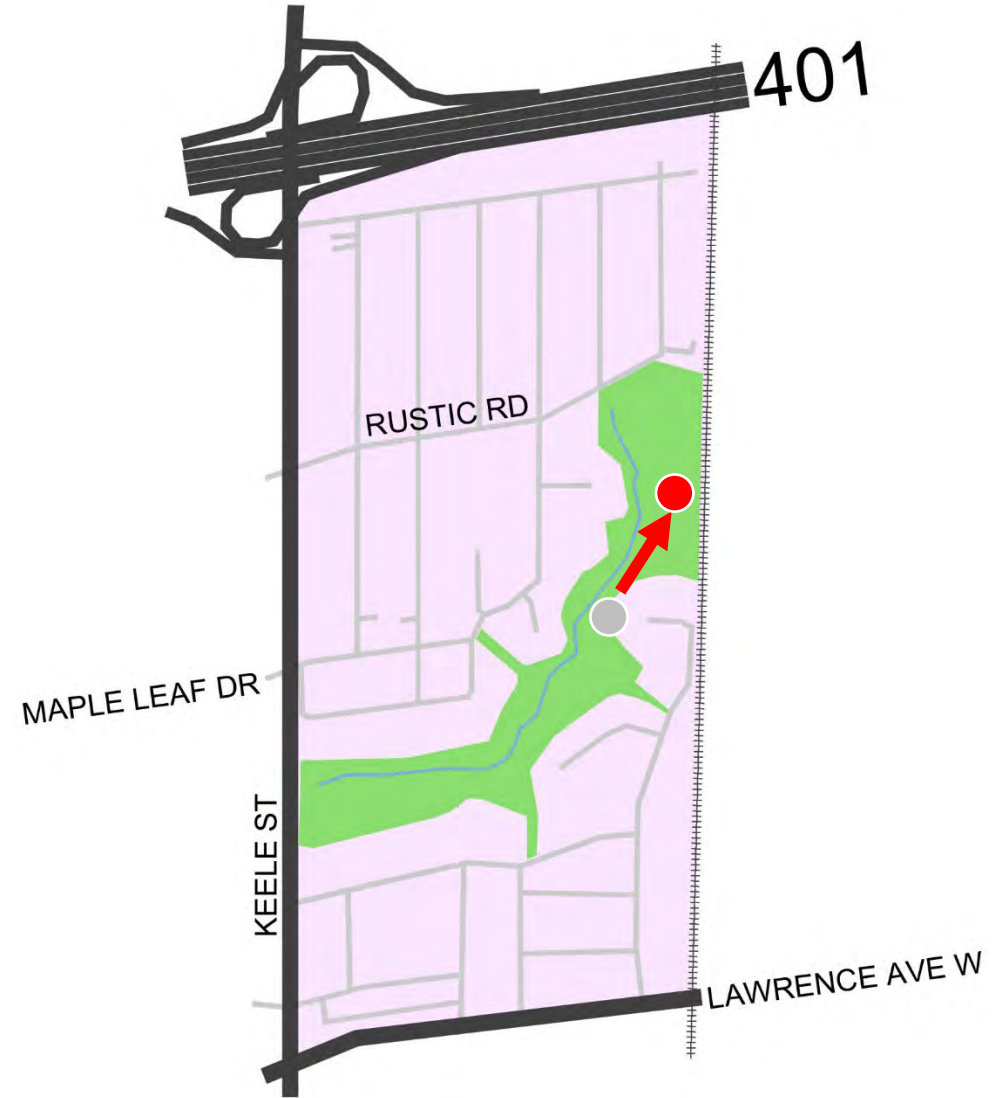
The park improvements have been developed based on input from the Community Working Group during previous engagement and will include:

- ✓ A new playground with engineered wood fibre surfacing.
- ✓ New fitness equipment.
- ✓ New community gathering area(s) and seating.
- ✓ A new purpose for the existing parking pad.
- ✓ Improvements to the existing tennis courts: new asphalt pavement, nets and line painting.
- ✓ A new water bottle filling station.
- ✓ New tree plantings.
- ✓ Shade options.
- ✓ A bike rack.
- ✓ New wayfinding signs at the Rustic entrance, at the new activity area and along the path.
- ✓ Regrading the existing driveway leading from main park path to the recreational area to facilitate a fully accessible access route.



Park Improvements

Due to the flooding issues at the existing playground location, the improvements project scope includes moving the playground location to the new recreational area (the "Subject Site") on higher ground, with all new equipment.



Park Improvements



For safety reasons, pedestrian lighting is not recommended for North Park.

North Park should be considered a Dawn 'til Dusk Park

- The recreational areas within the park are not close to park entrances, and due to the thick forest and hilly terrain, they are **isolated and not visible** from the adjacent streets.
- Lighting would encourage nighttime use and create a **false sense of security** for park users.
- Although it may *seem* safer, brightly lit areas with a dark perimeter (which is also densely forested at North Park) are *less* safe than the same area having no artificial light source, as the **contrast of glare and deep shadow** obscures vision and creates hiding places.
- The **cost of lighting** the park to the City's minimum standard of illumination **will detract heavily from the new recreational amenities** which can be provided as part of the improvements.



Design Options Overview

Design Options

The Project Team has created **three design options** as examples of the possible improvements in North Park.

Each design option provides the new amenities from the park improvements list.

Each design option offers up additional features beyond the park improvements list for your consideration.

Each design option is distinctly different.

No single design is intended to move forward exactly as presented. Elements and their locations can be mixed and matched between options so long as the final design remains within the available budget.



Design Options

First, we will present all three designs and some images of the proposed elements in these designs.

Second, we will present:

- The types of fitness equipment being considered for this park; and
- The types of playground equipment being considered for this park.

Third, we will take clarifying questions.

Finally, we'll ask you to use the feedback boards to express your opinions on these options and features.

City staff and members of the Project Team will be happy to answer any remaining questions and chat about what you like and dislike about the options.



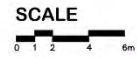
Design Option A

Option A displays:

- Landscape design that features simple shapes and lines.
- In place of the existing parking pad, a full basketball court with additional hoops on the sides of the court (example image below).
- A fitness pod between the basketball court and playground.
- Seating areas spread throughout the design.
- A variety of seating options including benches, picnic tables, and armourstone seat walls.
- A playground with engineered wood fibre surfacing.
- A gathering area with metal shade structure, located in the playground area (example image below).
- A water bottle filler (next to the tennis court).



Design Option A



- LEGEND**
- EXISTING DECIDUOUS TREE
 - EXISTING CONIFEROUS TREE
 - EXISTING WOODLOT
 - EXISTING MINOR CONTOUR
 - EXISTING MAJOR CONTOUR
 - EXISTING METAL LIGHT STANDARD
 - EXISTING LIGHT STANDARD
 - EXISTING FENCE

NOTE:
DRAWING
ROTATED
TO FIT
SCREEN

Featured Elements in Option A

**Images are examples only*



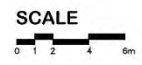
Design Option B

Option B displays:

- Landscape design that features non-uniform / organic shapes and lines.
- In place of the existing parking pad, a fitness pod at the north end and an open green for passive recreation.
- A water bottle filler west of the open green.
- A central seating area between the open green and the playground, with smaller seating options spread throughout the design.
- A variety of seating options including benches, picnic tables, and metal patio sets with shade umbrella.
- A playground with engineered wood fibre surfacing.
- Natural materials such as upright logs and large decorative boulders used throughout the design.



Design Option B



LEGEND

- EXISTING DECIDUOUS TREE
- EXISTING CONIFEROUS TREE
- EXISTING WOODLOT
- EXISTING MINOR CONTOUR
- EXISTING MAJOR CONTOUR
- EXISTING METAL LIGHT STANDARD
- EXISTING LIGHT STANDARD
- EXISTING FENCE

NOTE:
DRAWING
ROTATED
TO FIT
SCREEN

Featured Elements in Option B

**Images are examples only*



Design Option C

Option C displays:

- Landscape design that features angular shapes and straight lines.
- In place of the existing parking pad, a half basketball court with integrated ball hockey goal (example image below).
- The court edges feature sculptural concrete elements that can be used as 'informal' skateboard/rollersport features (example image below).
- A fitness pod between the multi-sport court and playground.
- In addition to smaller seating areas spread throughout the design, a central seating area between the fitness pod and playground includes a water bottle filler and concrete ping-pong table.
- A variety of seating options including benches, picnic tables, and concrete seatwalls.
- A playground with engineered wood fibre surfacing.
- A sandbox in the playground area.



Design Option C



Featured Elements in Option C

**Images are examples only*





Fitness and Play Equipment Overview

Fitness Equipment Options

**Images are examples only*

There are different options for the **type of fitness equipment** for North Park.



Standard
equipment



Equipment with
climbing features



Equipment with
obstacle features

About the New Playground

The new playground at North Park will be AODA-compliant, meaning it will offer a range of play experiences to children of varying abilities. This includes:

- Accessible play features;
- Ground surfaces that are firm, stable, and absorb impact to prevent injury;
- Ground surfaces with enough space for individuals to move through, in, and around the area; and
- Accessible pathways throughout the area.

Playground Equipment

**Images are examples only*

The following key playground features are proposed for North Park:

- A Junior play structure for kids ages 2 to 5
- A Senior play structure for kids ages 5 to 12
- Swings
- Slides



Playground Equipment

**Images are examples only*

The following additional features may also be considered:

1. A sand box
2. Climbing structures
3. Play panels
4. Spring toys
5. Spinner toys

①



②



③



④



⑤



Playground Style and Character

**Images are examples only*

There are different options for the style of **play structures** for the playground:



Junior and senior play structures featuring slides, activity panels, stairs, platforms and other climbing features

Playground Style and Character

**Images are examples only*

There are different style options for the **play structures** for the playground:



Nature-inspired junior and senior play structures with earthy colour schemes.

Playground Style and Character

**Images are examples only*

There are different style options for the **play structures** for the playground:



Circuit-type junior and senior play structures with hanging elements and net climbing elements.



Any clarifying questions?

Feedback Boards

In a minute we'd like to invite you to use the Feedback Boards set up around the room.

On these boards, you can use stickers and sticky notes to let us know your likes and dislikes and add comments.

City staff are available to answer your questions.

But first:

THANK YOU!



What's next? How can I stay involved?

Visit toronto.ca/NorthPark to take the online survey and to sign up for project updates!

Online Exploring Options Survey

Open: November 27, 2023

Close: December 17, 2023

A summary of Phase 2 Outcomes will be available on the project webpage in the new year.

Sign up for project updates and we'll email it – and other updates about the North Park Improvements – to you directly!



Toronto.ca/NorthPark

- Take the Online Survey
- Sign up for Updates



Rachel Weston

Parks, Forestry and Recreation, City of Toronto

rachel.weston@toronto.ca

416-392-3357

Rosemary McManus

Parks, Forestry and Recreation, City of Toronto

Rosemary.mcmanus@toronto.ca

416-396-7826