

Six Points Park District Plan & Two New Parks

CAC Meeting No. 4:

04 March 2024 – 6:00 PM



Meeting Agenda



Welcome & Introductions



Project Timeline



Final Vision Statement & Guiding Principles



What We Heard



Final Park District Plan



Preferred Concept Options for Two Parks & Discussion

Project Team

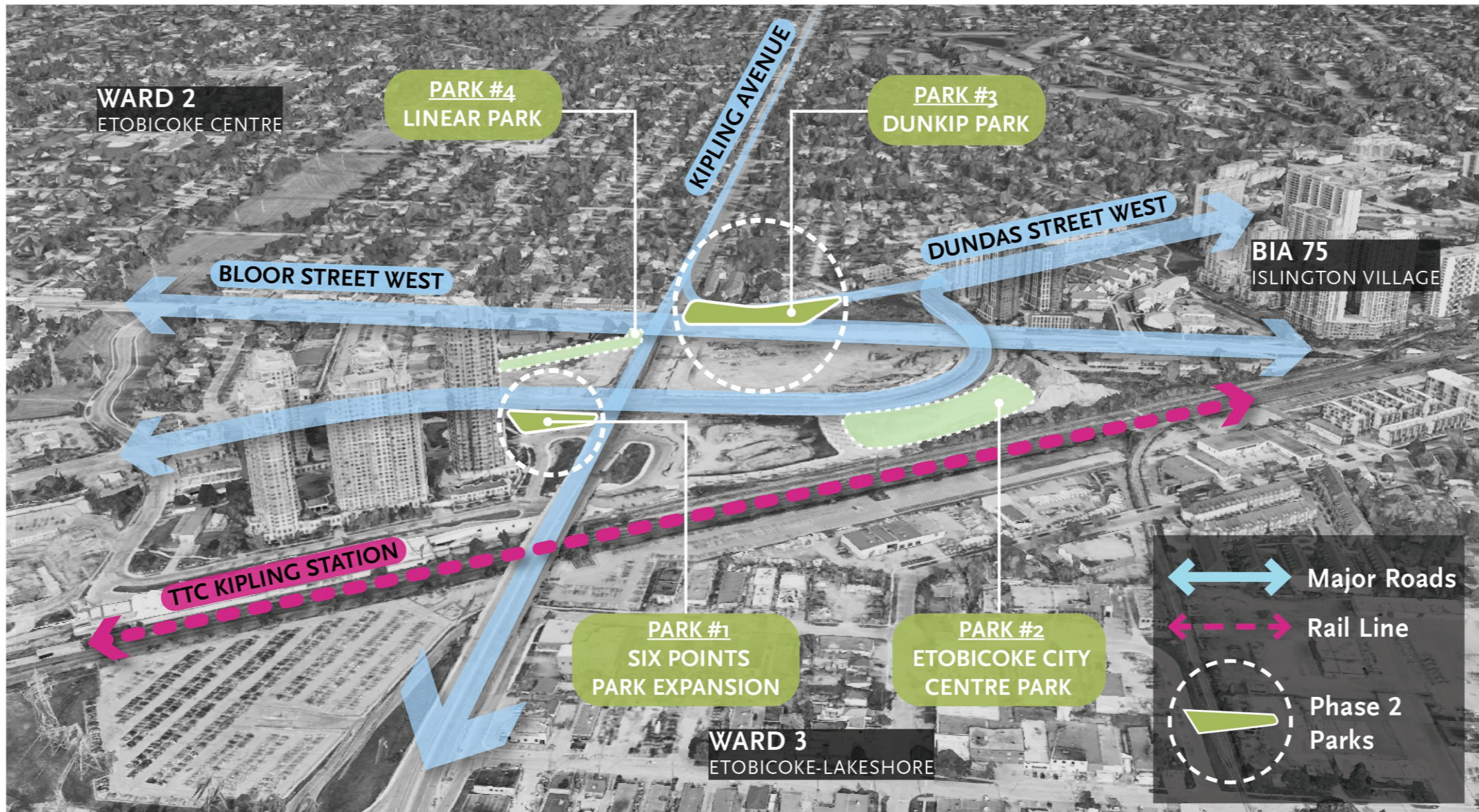
City of
Toronto
Parks,
Forestry, and
Recreation

Lara Herald – Senior Project Coordinator - Parks, Forestry and Recreation
Eli Bawuah – Senior Consultation Coordinator - Parks, Forestry and Recreation

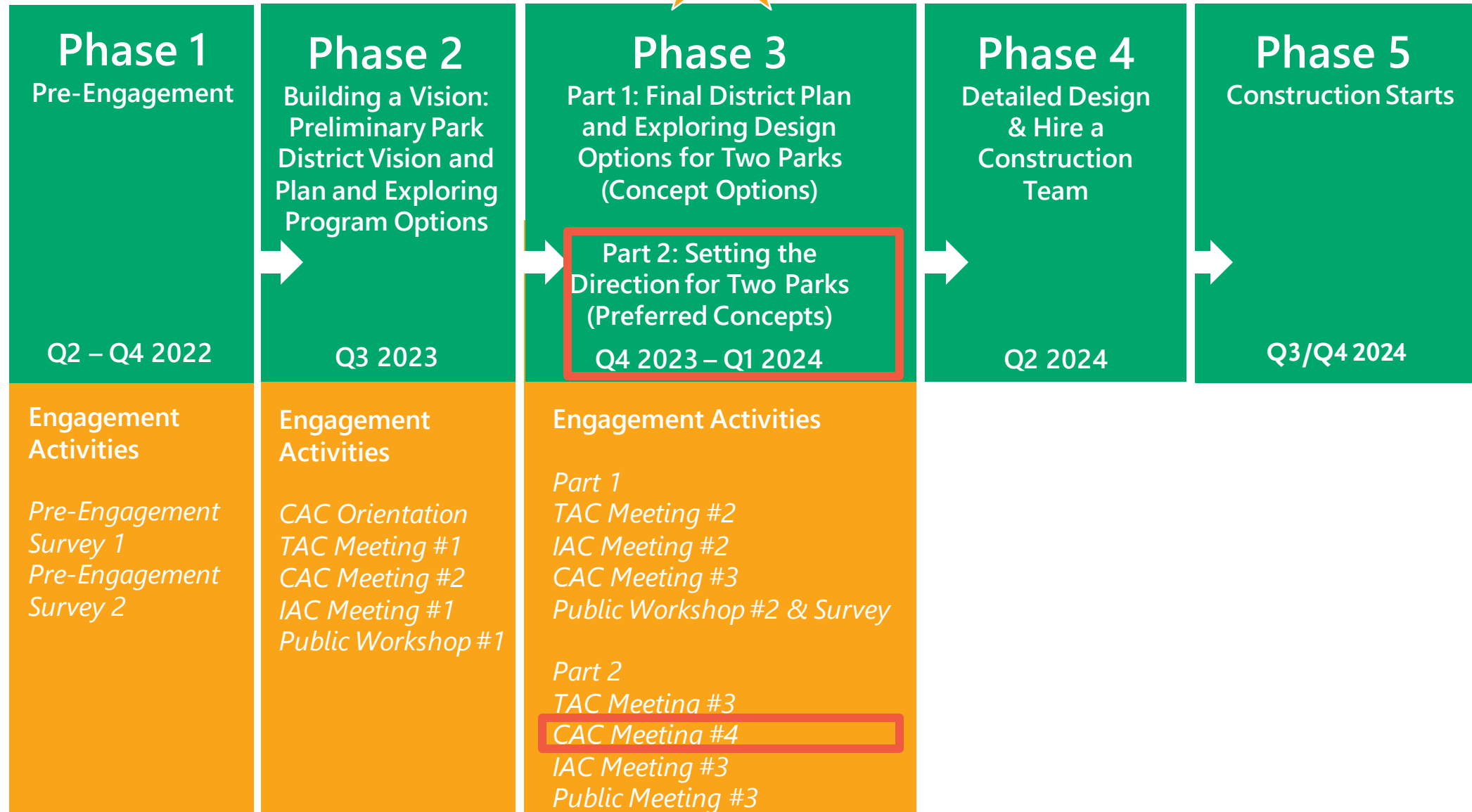
Design
Consultant
PLANT
Architect Inc.

Mary Tremain – Engagement Lead, Partner/PLANT Architect
Eric Klaver – LA Design Lead, Senior Landscape Architect, Partner/PLANT Architect
Zeynep Benk – Landscape Architect/Project Manager
Tanya Pande – Landscape Designer

Site Context



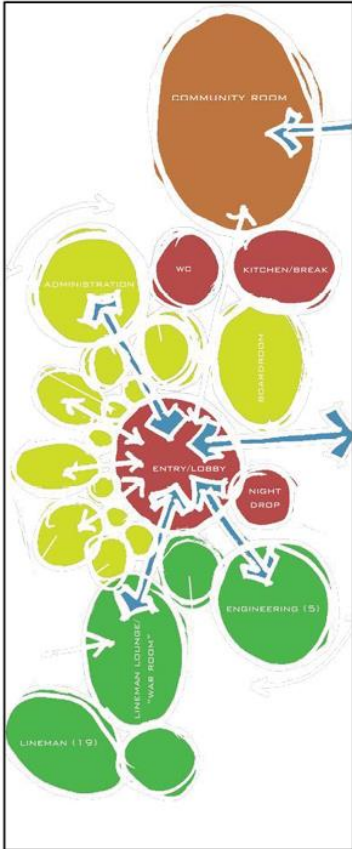
Project Timeline



Design Process

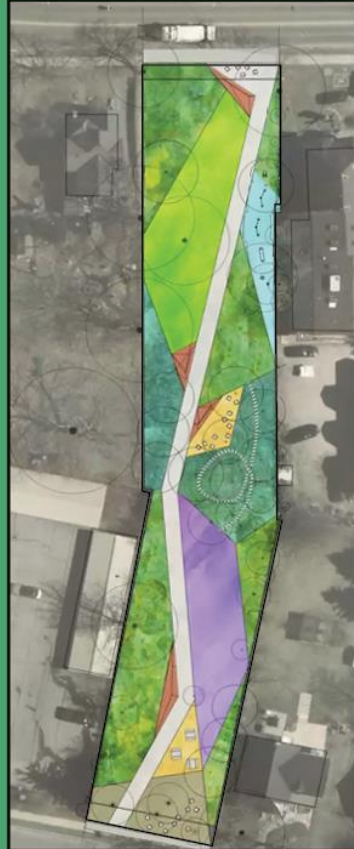
We
Are
Here

SITE PROGRAM



VISIONING

DRAFT DESIGNS



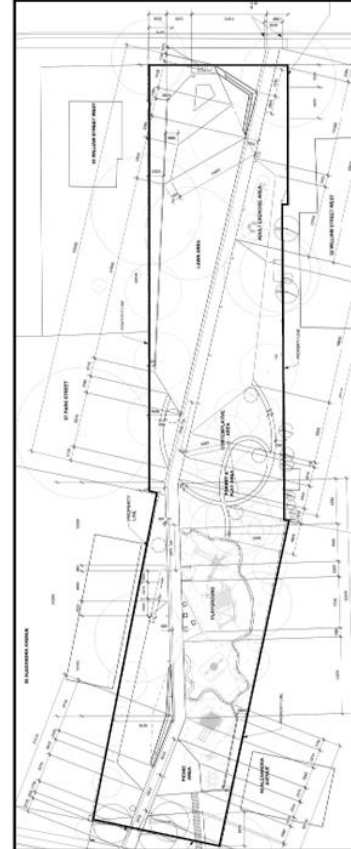
EXPLORING OPTIONS /
SETTING THE DIRECTION

PREFERRED DESIGNS

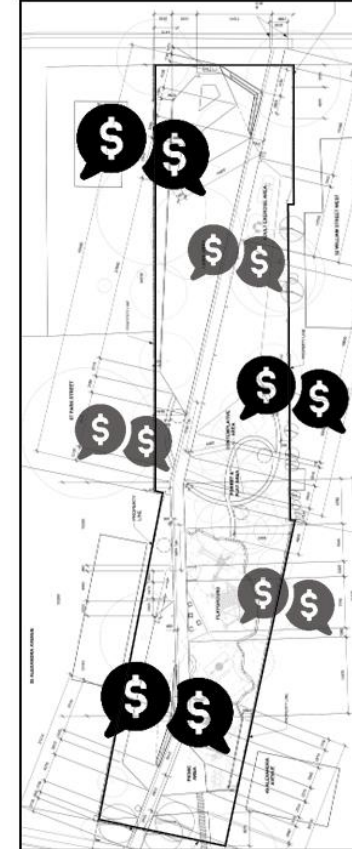


DESIGN
DEVELOPMENT

CONSTRUCTION DOCUMENTS



BIDDING



CONSTRUCTION



PROCUREMENT & CONSTRUCTION

Vision Statement & Guiding Principles

Vision Statement

*A **Vision Statement** is a succinct declaration outlining a project's future goals, values, and direction, guiding the design with purpose and inspiration.*

The Six Points Park District will serve as an inclusive green haven, capturing the community's essence as a place that honours local heritage, embraces cultural experiences, and fosters collective aspirations for the future. This new park district will be the result of thoughtful collaboration with local community members and careful application of accessibility design standards

and will provide comfortable safe spaces for the community to gather and connect. By incorporating sustainable design and Indigenous place-keeping, the Six Points Park District will blossom into a network of vibrant green spaces where diverse groups of all ages can convene, enjoy the outdoors, forge connections, and flourish year-round.

Guiding Principles

*A **Guiding Principle** is a fundamental concept that informs design, balancing human needs with sustainable considerations to create functional and aesthetically pleasing spaces.*

Multi-Generational & Multi-Cultural

- Create park spaces that are **intergenerational and inclusive**.
- Provide a **balance of programming and amenities** across the park network that cater to the existing and upcoming neighborhood and people of all demographics.
- Reflect and **celebrate** the **neighborhood's unique character** and explore interventions that pay homage to the area's heritage and evolution over time.

Diverse Park Spaces

- Create spaces that accommodate **different scales**, with different **configurations and amenities** to accommodate **active, passive, and flexible recreation** opportunities.
- Incorporate **large and small gathering spaces**, intimate spaces, and peripheral spaces.

Integrate Ecology

- Incorporate planting zones that support **biodiversity, stormwater management, air pollution**, and **heat island** mitigation.
- Align with **Indigenous values** by using **sustainable** practices, **native plants**, and involving communities in long-term stewardship.
- Introduce trees and planting to provide **plenty of shade** and to benefit the psychological well-being of individuals.

Community

- Create a **diversity of park types** and community spaces with strong distinctive characteristics appropriate for each parks' unique location within this emerging neighbourhood.
- Incorporate **place-keeping elements** that recognize and reconnect to the origins of the land and the narratives that honour Indigenous place.
- Ensure the four parks are **well-connected** to each other and to other green spaces near-by.
- Create a **strong network of parks** that work together as a whole.

Accessibility, Comfort, & Safety

- Prioritize parks that are **accessible and comfortable** for people of all ages, abilities, and impairment.
- Provide park spaces that feel **safe** for all people, are **well-lit**, and **well-maintained**.
- Provide **safe and easy connections** to parks that consider existing and planned circulation routes, patterns, and desire lines.
- **Buffer** park edges that are adjacent to busy roads to **improve safety and comfort**, enhance park spaces, and **mitigate noise** from rail and roads.

What We Heard

What We Heard: Park District – Overview

Accessibility

"Ensure bike lanes and wheelchair paths are clearly indicated for those using walkers/wheelchairs."

Community

"Integrate spaces where neighbours can gather, hold ceremonies, and foster a sense of community."

Multi-Generation Use

"Hoping to see the multigenerational spaces that would allow persons to meet and engage and where community building can be encouraged."

Safety

"User's safety and accessibility should be a high priority."

Inclusivity

"Ideal location for a skate spot or basketball court, tailored to the preferences of young adults and teenagers, without any associated fees."

Green Space

"Need more places for people to go for walks and enjoy nature, without much noise. It would be nice to make spaces for adults to relax after work."

Balance of Activities

"Some of the parks could be dedicated to louder, active recreation opportunities, while other parks could be dedicated to quiet, nature contemplation, and passive recreation."

Recreational Use

"Neighbourhood has children, so activities like skateboarding, basketball, ping pong, and fitness amenities would be appreciated."

Buffer Zones

"Nature buffering street noise so it doesn't feel like you're on the street"

What We Heard: Park District – Common Themes

Passive & Quieter
Activities

Active Recreation

Connectivity*

Dedicated
Skateboarding Area*

Intimate
Spaces

Large Gathering Spaces

Maximize Green
Spaces*

Heritage / Art
Elements*

Dedicated Biking &
Walking

Noise / Traffic
Protection

Dense / Buffer
Planting

Abundant Tree
Shade

Native / Cultural
Gardens

Horticultural / Pollinator
Gardens

Multi-Purpose
Lawns

Varied Seating
Options

What We Heard: CAC Meetings #1, #2 & #3

Community Advisory Committee

Accessibility and Inclusivity:

- Prioritize **accessibility** for all ages and abilities.
- Design inclusive spaces with amenities and seating options.
- **Multi-generational** and cater to diverse demographics including seniors, families, and individuals with disabilities.
- Ensure bike lanes and wheelchair paths are clearly indicated for those using walkers/ wheelchairs.
- Consider **connectivity** to future potential pedestrian bridge over the rail tracks.

Green Space and Outdoor Amenities:

- **Increase green spaces** for gatherings and relief from concrete.
- Introduce **amenities for families, youth, seniors, and pets**.
- Tree grove areas and berms to provide **sound buffering** from the noisy edges of the road at Dunkip Park.

Community Engagement and Cultural Improvement:

- Include **public art** and provide space for **gathering**, events, and ceremonies.
- Incorporate space for neighbours to meet up, have ceremonies, and create a community.
- Celebrate neighborhood's **character and heritage**.

Safety and Functionality:

- Separate vehicles from pedestrians, incorporate berms between the two areas for buffer.
- Getting to these parks would be very dangerous, thus, ensure **safe access to the parks**, traffic calming are in place all year round.
- Traffic incidents at the south side of Kipling and Dundas call for buffer at that corner.
- Consider safety of the kids playing in the skate spot.
- Reconsider having a bike share station at Linear Park because it is close to a major intersection.

What We Heard: CAC Meetings #1, #2 & #3

Community Advisory Committee

Park Design Amenities:

- **OLA at Six Points Park Expansion** would be a good combination with the existing amenities.
- **Horticultural / community garden**, water fountain, or a woodlot can be incorporated in Dunkip Park.
- Multi-sports court and **multi-purpose lawn** are great for Etobicoke City Centre Park that can cater to young adults and teenagers free of cost.
- Include stage / amphitheatre area.
- Consider fewer program options at Etobicoke City Centre Park so it doesn't feel jammed.
- Dogs off-leash (OLA) areas are usually fenced and therefore reduce the amount of open space available for people.
- Keep and utilize mature trees to help create an "oasis" or green space that blocks out nearby traffic noise.

- Incorporate **outdoor exercise** in the Park District Plan.
- Incorporate amenities like BBQ stations, fire pits, smoking areas, games tables, golf / putting green, and staff meeting room.
- Include **skateboarding and other youth program options** in the Park District Plan.

General Feedback:

- Year-round activity for Etobicoke City Centre Park.
- Emphasized importance of **accessibility** and proposed RHFAC certification.
- Suggested following Ontario, Toronto, and specialty groups' accessibility recommendations.
- Recommended application for Canadian Tire Jumpstart Inclusive Play Spaces program.

Final Park District Plan

Final Park District Plan

Park #4 – Linear Park

- CHESS TABLES
- HISTORICAL DUNDAS ALIGNMENT INTERPRETATION
- INDIGENOUS-FOCUSED MURAL
- INDIGENOUS CULTURAL GARDEN WITH INTERPRETIVE SIGNAGE
- HORTICULTURAL PLANTING
- SEATING / GATHERING
- MULTI-USE TRAIL
- LINEAR OUTDOOR FITNESS CIRCUIT

Park #3 – Dunkip Park

- HISTORICAL DUNDAS ALIGNMENT INTERPRETATION
- INDIGENOUS CULTURAL GARDEN WITH INTERPRETIVE SIGNAGE
- FEATURE BENCHES
- HORTICULTURAL PLANTING
- SPECIMEN TREE
- SEATING / GATHERING
- SKATE SPOT

Park #2 – Etobicoke City Centre Park

- GATEWAY ART FEATURE
- STREET EDGE ART FEATURE
- BIKE SHARE STATION
- SEATING / GATHERING
- SHADE STRUCTURE
- SKATEABLE FEATURES
- INDIGENOUS CULTURAL GARDEN WITH INTERPRETIVE SIGNAGE
- MEDICINE WHEEL
- RAIN GARDEN
- MULTI-SPORTS COURT
- MULTI-USE FIELD
- FIRE PIT
- WASHROOMS
- PLAYGROUND AREA
- TOBOGGANING BERM

Park #1 – Six Points Park Expansion

- SEATING / GATHERING
- COMMUNITY TABLE
- OLA (DOG OFF-LEASH AREA)
- LAWN WITH SHADE TREES
- INDIGENOUS CULTURAL GARDEN WITH INTERPRETIVE SIGNAGE
- HORTICULTURAL PLANTING

*Potential future closure of the Dundas Street West slip lane is subject to further analysis and reporting by Transportation Services staff.

The Park District Plan is a strategic plan for the district that was developed to balance programs and amenities identified through extensive community engagement and analysis of immediate and long-term needs and goals of the neighbourhood. The plan follows the overarching principles of diversity and inclusivity, integrated ecology and sustainability, community building, accessibility, comfort and safety to establish a comprehensive plan for future implementation.

Final Park District Plan: Park #1, Neighbourhood Park

Six Points Park Expansion



- SEATING/GATHERING
- COMMUNITY TABLE
- OLA (DOG OFF-LEASH AREA)
- LAWN AREAS WITH SHADE TREES
- INDIGENOUS CULTURAL GARDEN WITH INTERPRETIVE SIGNAGE
- HORTICULTURAL PLANTING

Park #1 Neighbourhood Park

An intimate park with an exposed eastern edge, tucked into the established neighbourhood.



Key Changes:

- *Hybrid concept that integrates extra small OLA into Green Oasis*
- *Enlarges buffer to street at east side of OLA*
- *Adds seating/gathering areas close to existing park*
- *Eliminated outdoor fitness & ping-pong*
- *Relocates outdoor fitness program to another location in park district*
- *Increases open lawn area and reduces meadow*

Final Park District Plan: Park #2, Magnet Park

Etobicoke City Centre Park



- GATEWAY ART FEATURE
- STREET EDGE ART FEATURE
- BIKE SHARE STATION
- SEATING / GATHERING
- SHADE STRUCTURE
- SKATEABLE FEATURES
- INDIGENOUS CULTURAL GARDEN WITH INTERPRETIVE SIGNAGE
- MEDICINE WHEEL
- RAIN GARDEN
- MULTI-SPORTS COURT
- MULTI-USE FIELD
- FIRE PIT
- WASHROOMS
- PLAYGROUND AREA
- TOBOGGANING BERM

Park #2 Magnet Park

A centrally located destination park facing the new Civic Centre with busy street edges on all four sides can provide a spill-over space from the Civic Centre plaza.



Key Changes:

- *Revises the shape of tobogganing berm & shade structure*
- *Incorporates medicine wheel*
- *Integrates skateable features*

Final Park District Plan: Park #3, Gateway Park

Dunkip Park



* Potential future closure of the Dundas Street West slip lane is subject to further analysis and reporting by Transportation Services staff.

- HISTORICAL DUNDAS ALIGNMENT INTERPRETATION
- INDIGENOUS CULTURAL GARDEN WITH INTERPRETIVE SIGNAGE
- FEATURE BENCHES
- HORTICULTURAL PLANTING
- SPECIMEN TREE
- SEATING/GATHERING
- SKATE SPOT

Park #3 Gateway Park

A connector park that makes links to surrounding nearby communities. (East to Islington Village, West along Bloor Street, North and South to Wards 2 & 3 respectively). Together the park and Civic Centre define the precinct entry.



Key Changes:

- Hybrid concept that integrates smaller gathering areas into a linear plaza
- Includes succession tree as focal point
- Incorporates designated, separated skate spot
- Introduces northeast entry plaza for improved connectivity to Islington Village
- Incorporates additional seating options

Final Park District Plan: Park #4, Commemorative Park

Linear Park



- CHESS TABLES
- HISTORICAL DUNDAS ALIGNMENT INTERPRETATION
- INDIGENOUS-FOCUSED MURAL
- INDIGENOUS CULTURAL GARDEN WITH INTERPRETIVE SIGNAGE
- HORTICULTURAL PLANTING
- SEATING / GATHERING
- MULTI-USE TRAIL
- LINEAR OUTDOOR FITNESS CIRCUIT

Park #4 Commemorative Park

This park commemorates the historical Dundas Street alignment and will include design elements that accentuate movement along the historic path.



Key Changes:

- *Adds outdoor linear fitness circuit*
- *Relocates Bike Share station to another location in park district*
- *Relocates skate spot to another location in park district*

Preferred Concept Options For Two Parks

Engagement Summary: Two Parks

Preferred Options & Amenities

SITE

OPTION 1 – Preferred Amenities

OPTION 2 – Preferred Amenities

PARK #1 SIX POINTS PARK EXPANSION

DOGS OFF-LEASH AREA



- Indigenous pollinator garden
- Buffer planting for noise / traffic protection
- Curvilinear bench with attached small tables (outside the OLA)
- OLA

GREEN OASIS *



- Meadow
- Buffer planting for noise / traffic protection
- Accessible seating area
- Indigenous pollinator garden
- Horticultural planting & lawn
- Long community table with chess board
- Art feature
- Fitness area

* Preferred design concept by 62% of the Public Workshop & 56% of the Survey participants

PARK #3 DUNKIP PARK

LINEAR PLAZA *



- Plaza with scattered shade trees
- Tree grove berms for noise / traffic protection
- Gathering tree as focal point
- Indigenous pollinator garden
- Feature wall with integrated seating
- Historic Dundas Street marker
- Separate skate spot was preferred over skateable features on north side of plaza

* Preferred design concept by 57% of the Public Workshop participants

TWO GATHERING AREAS *



- Tree grove berms for noise / traffic protection
- Indigenous pollinator garden
- Two gathering areas; one with a feature bench, and a second with succession tree
- Gathering area with succession tree
- Skate spot separate from other park amenities
- Historic Dundas Street marker

* Preferred design concept by 56% of the Survey participants



Six Points Park Expansion (Neighbourhood Park)

Six Points Park Expansion: Green Oasis with Extra Small OLA

Passive & quieter activities

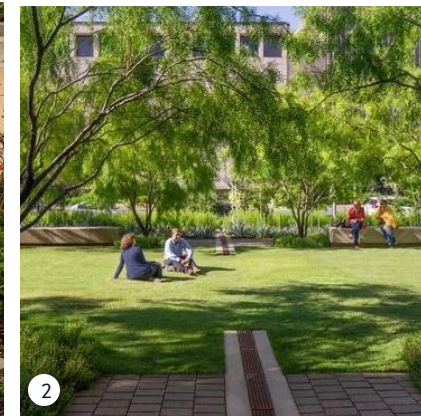
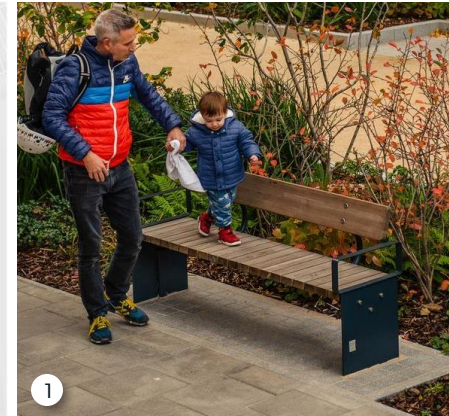
Extra-small off-leash area (OLA) (230m²)

Accessible community gathering area

Potential expansion of OLA (shown in grey dashed line)*

Abundant green spaces as buffer to street

Indigenous cultural garden zone with interpretive sign



Six Points Park Expansion: Precedent Images



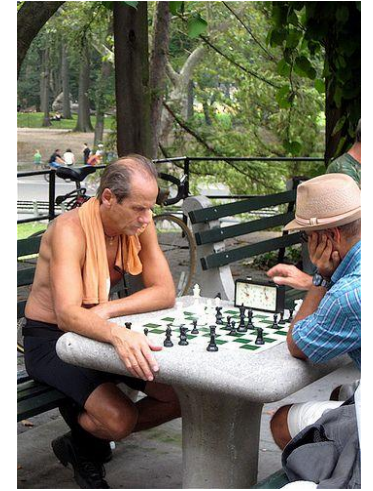
Open lawn with trees



Indigenous cultural garden with interpretive sign



Planting / tree buffer



Chess table



Dogs-off-leash area



Gathering area



Community table

Extra Small OLA Precedents



Grange Park OLA
~400m²



Love Park OLA
270m²



Huron Street Playground OLA
330m²



Aitken Place Dog Run
193m²

Six Points Park Expansion: Green Oasis with Extra Small OLA

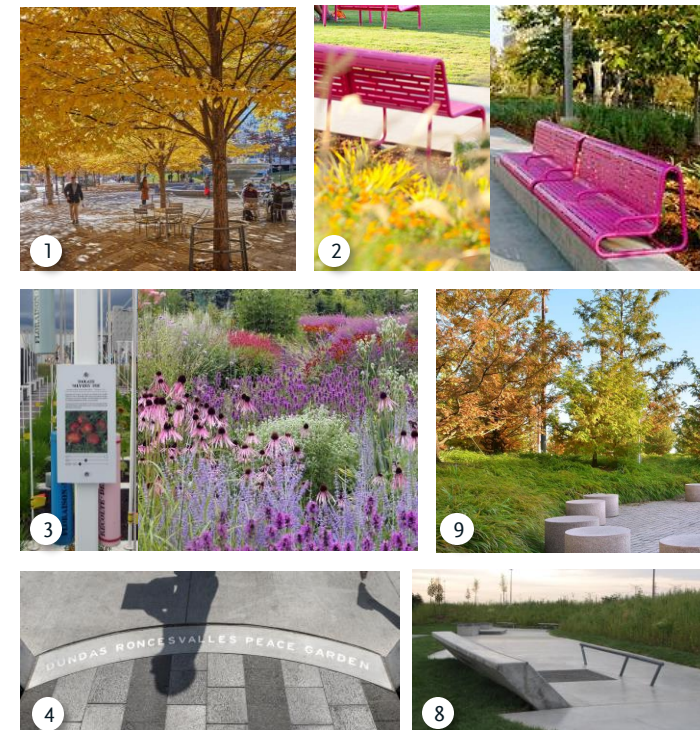
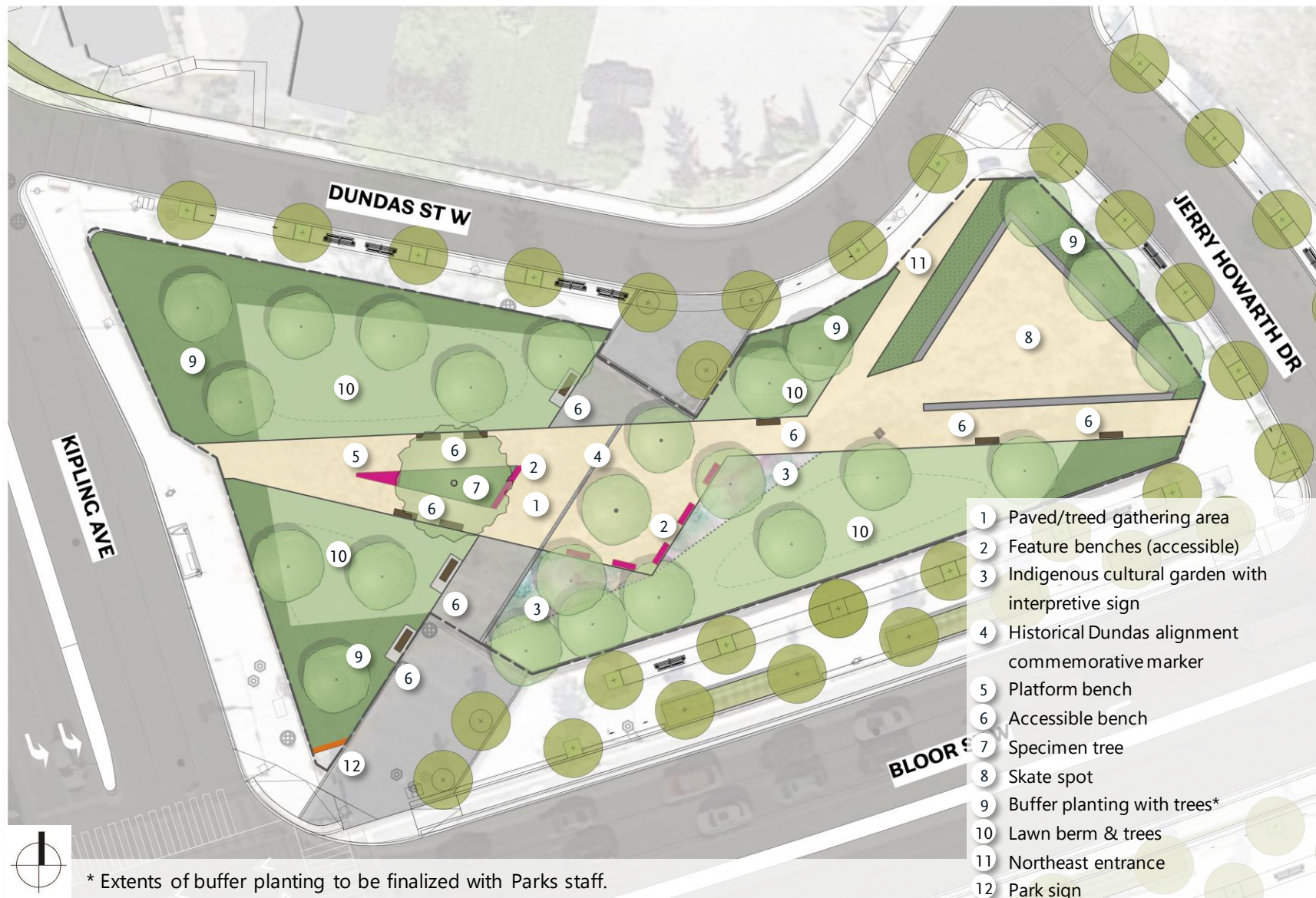
Perspective View





Dunkip Park (Gateway Park)

Dunkip Park: Linear Walkway With Gathering Areas



Passive & active uses

Linear walkway connecting two distinct gathering areas

Distinct paving and seating define plaza

Visually striking (or colourful) feature bench

Succession tree as focal point

Designated area for skateboarding (190m²)

Landscaped berms as buffer to streets

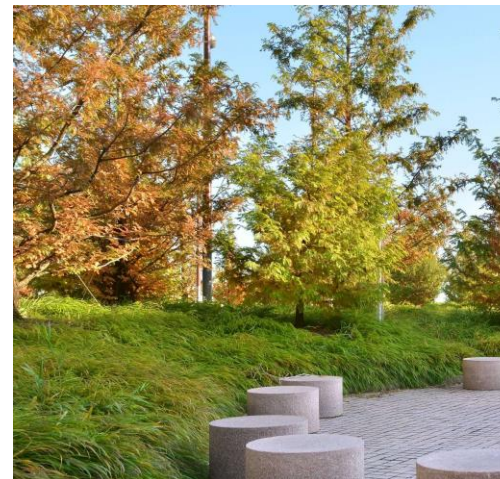
Indigenous cultural garden with interpretive signage

Embedded heritage marker and paving defines former Dundas St. alignment

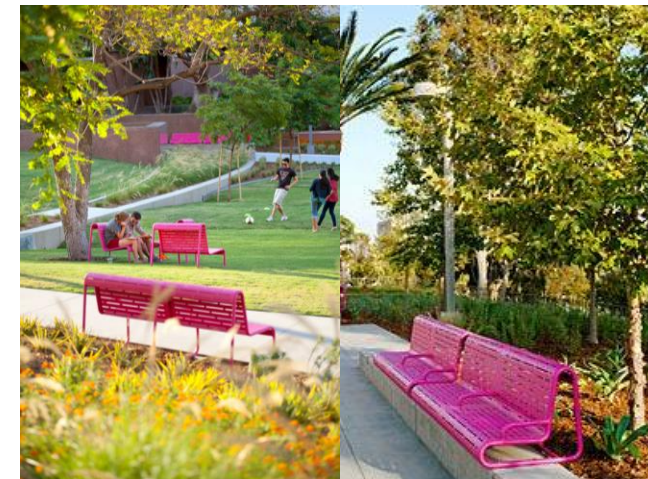
Dunkip Park: Precedent Images



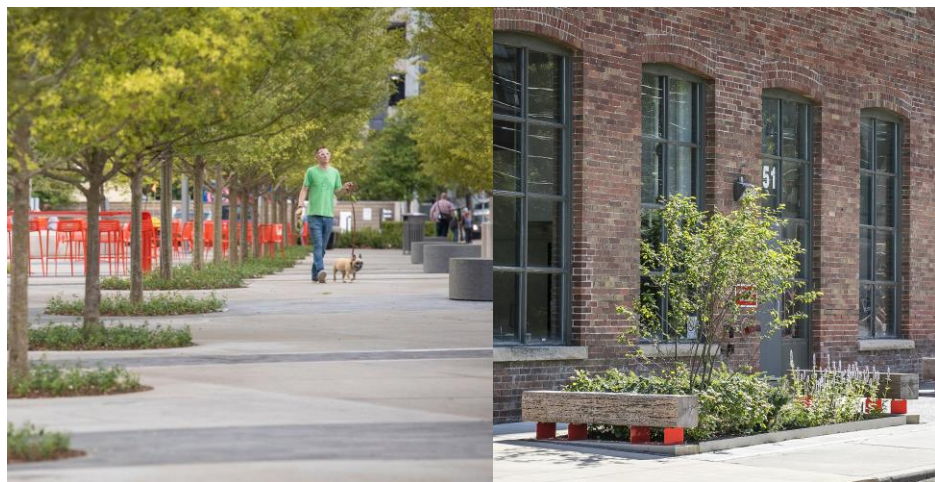
Open lawn berms with trees



Buffer planting with trees



Colourful benches define spaces



Tree allée / gathering area



Indigenous cultural garden with interpretive sign



Skate spot

Dunkip Park: Linear Walkway with Gathering Areas

Perspective View

Feature
Accessible
Benches
Indigenous
Cultural
Garden



Specimen
Tree

Lawn Berm
& Trees

Platform
Bench

Lawn Berm
& Trees

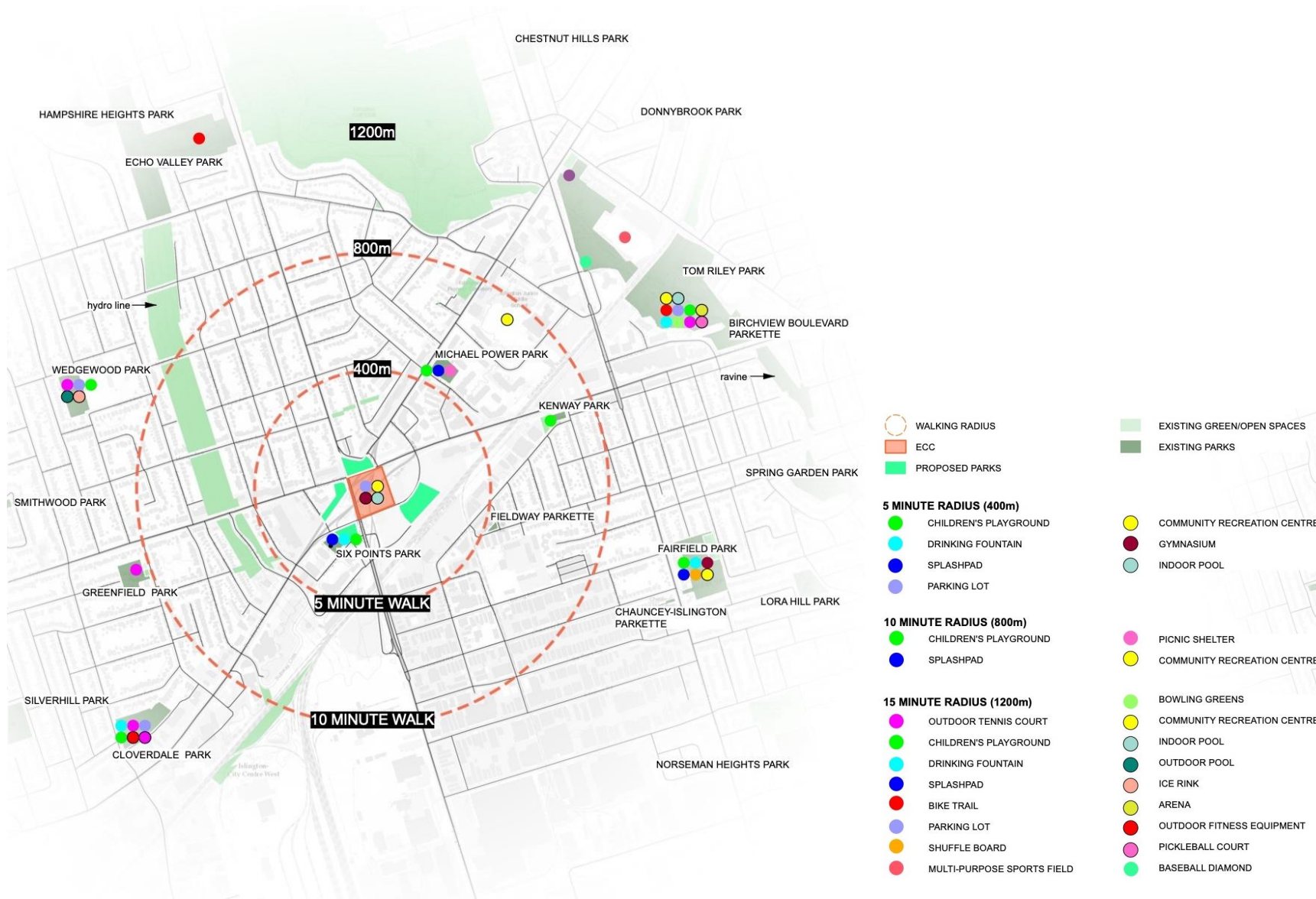
**Any final questions or
comments on anything
we've covered today?**

Thank you!

Appendix

What We Found

Current Programs: Gaps & Opportunities

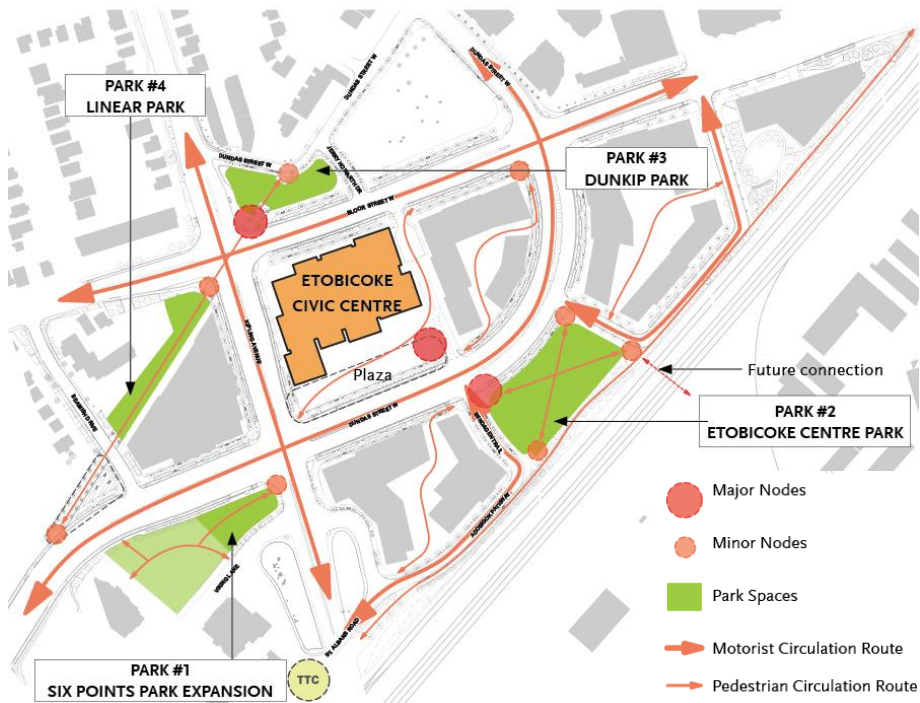


What We Found

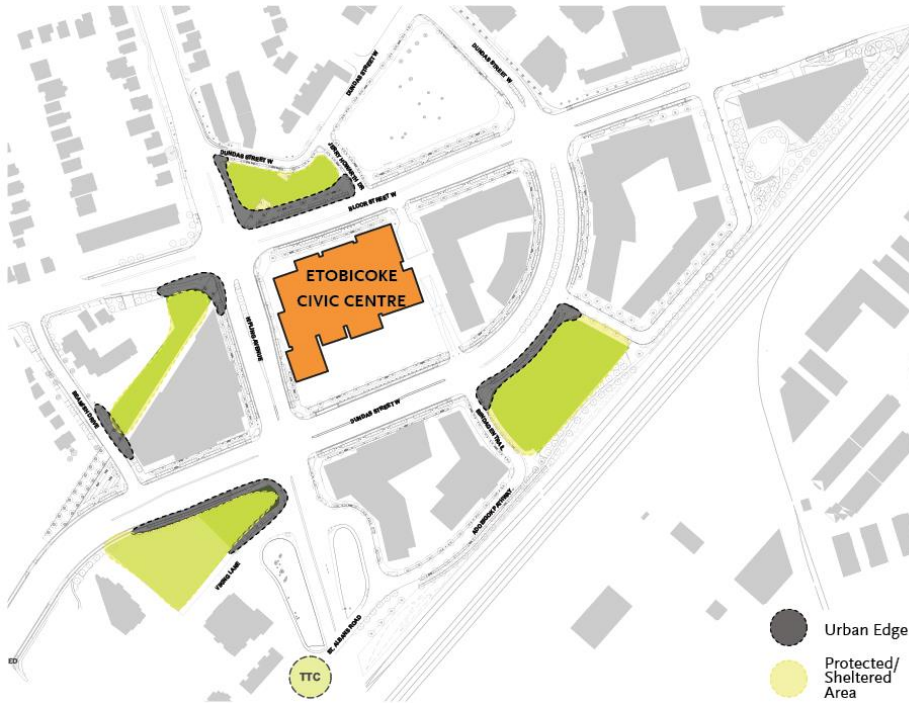
- The area is short of green spaces and parks within a 5-minute neighborhood walking radius.
- Some programs are absent from the area and should be considered, including
 - Outdoor basketball court
 - Skate park or skate spot
 - Outdoor artificial ice rink.

Site Analysis Summary

Circulation & Nodes



Urban Edge



What We Found

- All four parks are well-connected to motorist, pedestrian, and cycling routes.
- Urban edges create an opportunity for social interaction.
- Protected or buffered areas create opportunities for active recreation. Noise in the parks can be managed with buffer zones by sound masking or by introducing programs that are themselves noisy.
- There is a visual link between Dunkip Park & Linear Park across the intersection (along the Dundas Street historical alignment.)

Future Planned Area Development

Block 01 – 26 Floors



Etobicoke Civic Centre – 16 Floors



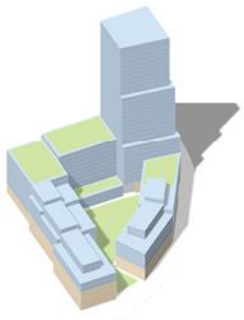
**Potential Future OLA
At Pinnacle Etobicoke
5415 Dundas St W
9 Towers – 25 to 43 Floors**



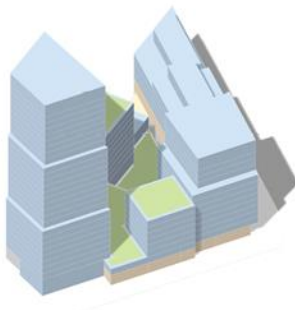
**3825 Bloor Street West
4 Towers – 25 to 45 Floors**



Block 03 – 30 Floors



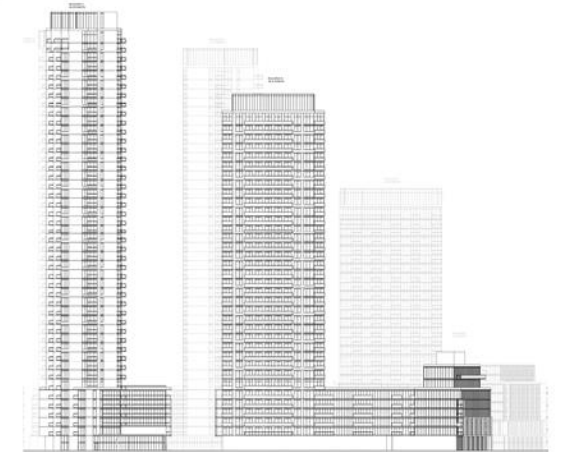
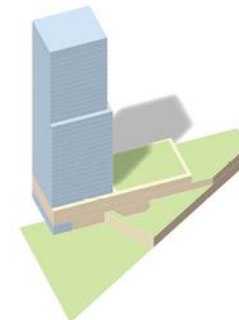
Block 05 – 28 Floors



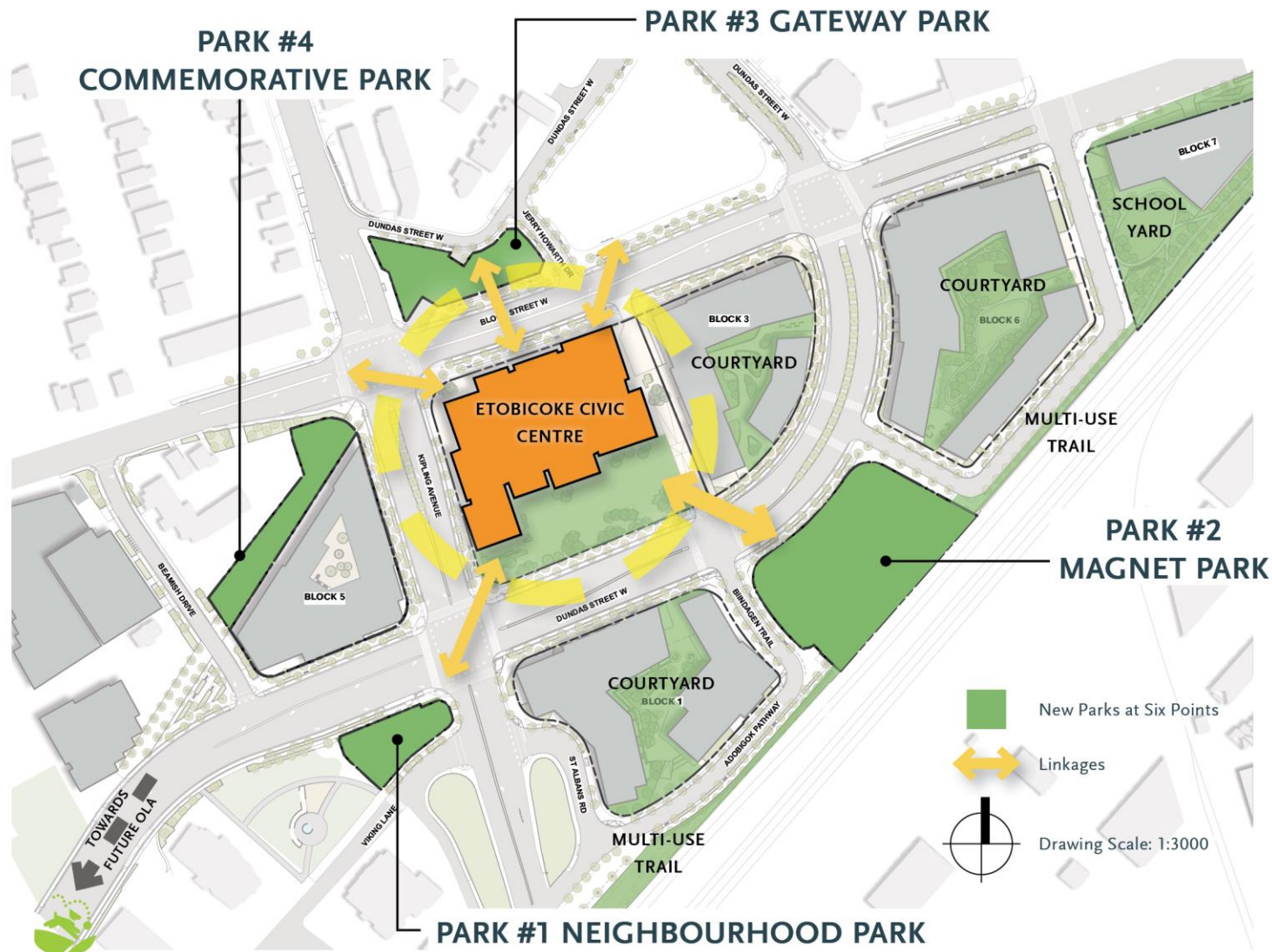
Block 06 – 39 Floors



Block 07 – 33 Floors



Park Typologies & Green Space Network



PARK #1 Neighbourhood Park

An intimate park with an exposed eastern edge, tucked into the established neighbourhood.

PARK #2 Magnet Park

A centrally located destination park facing the new Civic Centre with busy street edges on all four sides can provide a spill-over space from the Civic Centre plaza.

PARK #3 Gateway Park

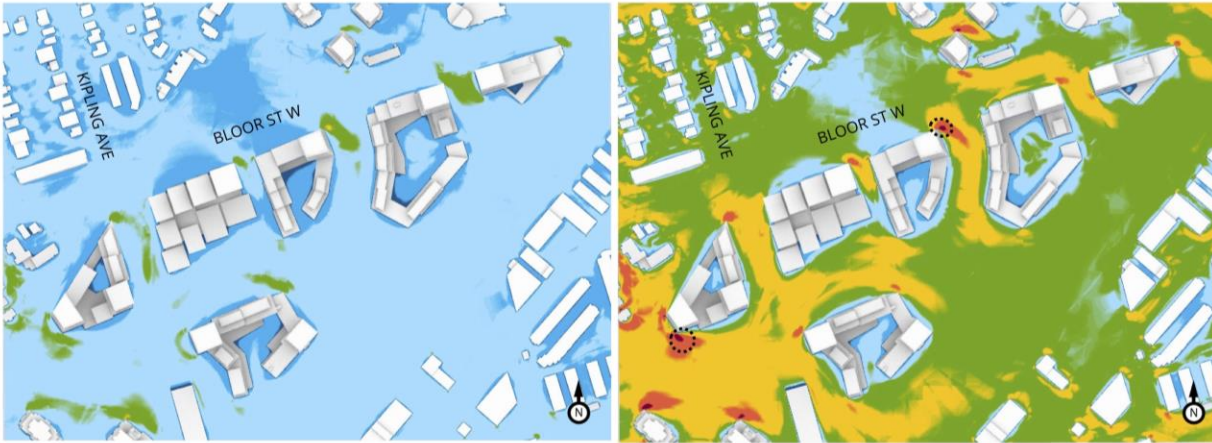
A connector park that makes links to surrounding nearby communities. (East to Islington BIA, West along Bloor Street, North and South to Wards 2 & 3 respectively). Together the park and Civic Centre define the precinct entry.

PARK #4 Commemorative Park

This park commemorates the historic Dundas Street alignment and will include design elements that accentuate movement along the historic path.

Existing Wind Studies

With the introduction of the future developments, wind conditions are predicted to remain very similar throughout the year. Wind speeds to the north of Block 3 and Block 6 will be somewhat reduced.



(a) FUTURE SCENARIO – SUMMER

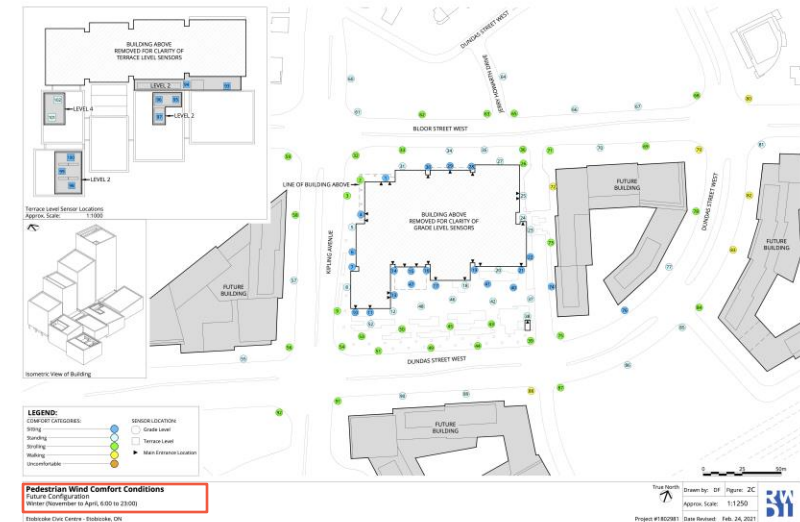
(b) FUTURE SCENARIO – WINTER

COMFORT: SITTING STANDING STROLLING WALKING UNCOMFORTABLE

SAFETY EXCEEDANCE:

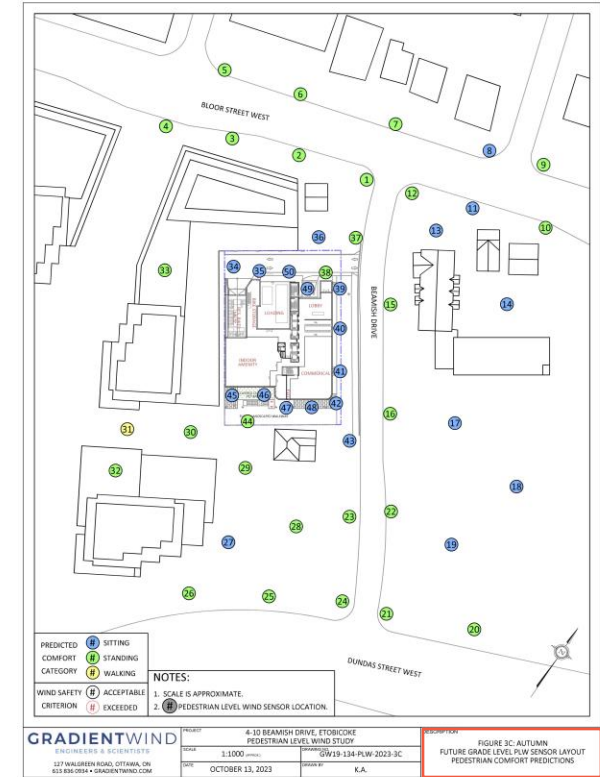
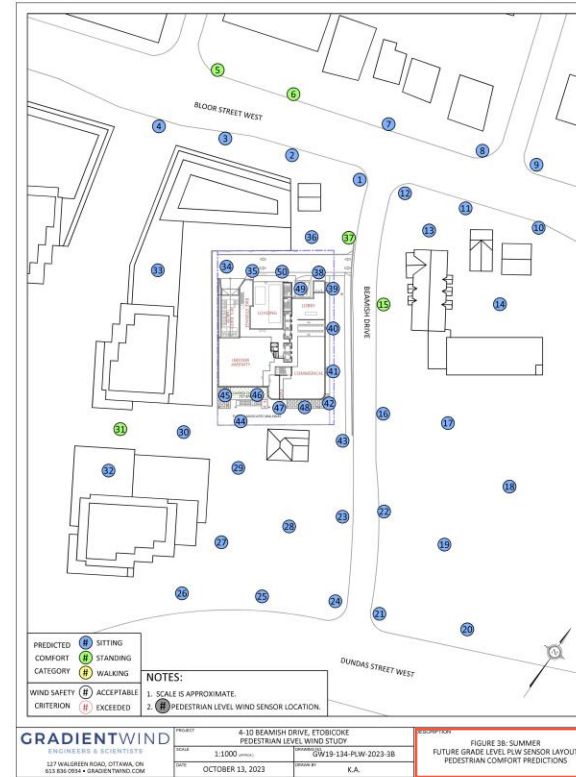
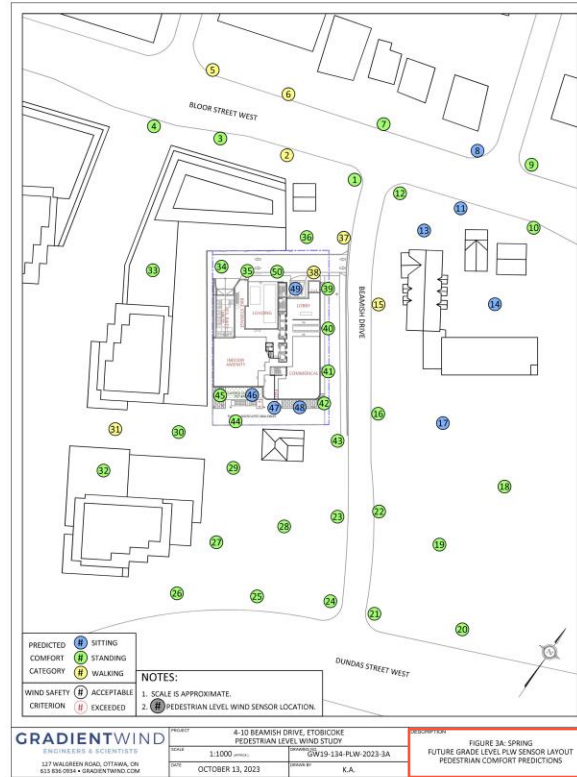
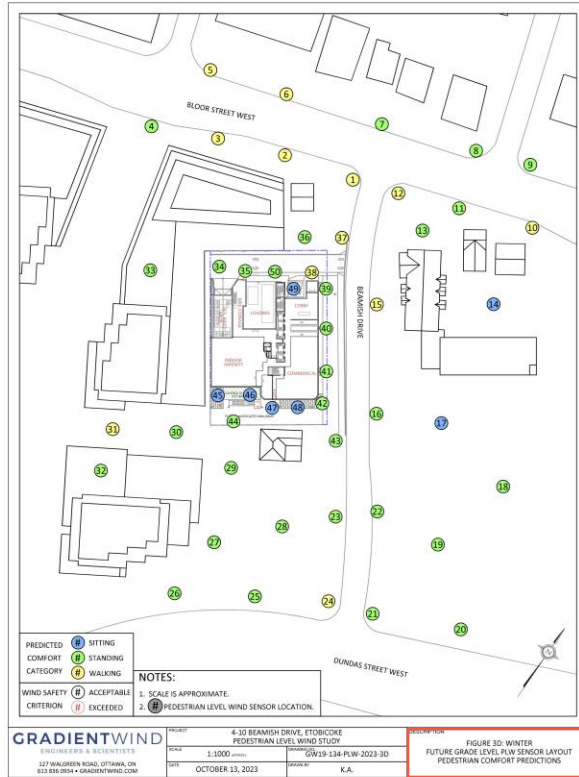
Image 10: Wind conditions for the future site.

BLOOR-KIPLING (SIX POINTS) FOCUS AREA
PEDESTRIAN WIND ASSESSMENT
April 20, 2021



ETOBICOKE CIVIC CENTRE
PEDESTRIAN WIND STUDY
March 15, 2021

Existing Wind Studies



PEDESTRIAN LEVEL WIND STUDY
4-10 BEAMISH DRIVE
October 16, 2023

What We Heard

Community Engagement: Overview

Community Engagement Phase 1A: Pre-Engagement was **led and completed by City Staff**. This phase of the community engagement process started in summer 2022. The following were completed:

- Online Park District Thought Exchange visioning activity – November 2022
- Online park amenities visioning survey – June 2022

Community Engagement Phase 1B: Background Review, Site Investigations and Analysis, and Phase 2A: Draft District Vision and Plan and Preliminary Park Options are completed.

Final District Vision and Plan and Preferred Park Concepts will be **led by PLANT with support from Saffy**.

Part 1 of this phase includes:

- Technical Advisory Committee (TAC) meeting #2 (Complete)
- Community Advisory Committee (CAC) meeting #3 (Complete)
- Indigenous Advisory Circle (IAC) meeting #2 (Complete)
- Public Workshop #2 & Survey (Complete)

Part 2 of this phase includes:

- Technical Advisory Committee (TAC) meeting #3
- Community Advisory Committee (CAC) meeting #4
- Indigenous Advisory Circle (IAC) meeting #3
- Public Meeting

What We Heard: TAC Meetings #1 & #2

Technical Advisory Committee

Accessibility and Inclusivity:

- Ensure wheelchair accessibility, including on-street accessible parking spots with easy access to paved trails and seating areas.

Green Space and Outdoor Amenities:

- Prioritize noise mitigation as a key element for enhancing park comfort.
- Consider ease of maintenance for the planting areas.

Park Design Amenities:

- Recommend not utilizing small space for OLA to maintain high standards; if OLA standards can't be met, consider alternative programming.
- Plan for bike parking at park entrances to encourage walking and reduce bike traffic on lawns.
- Previous studies showed a need for skateboard facilities in the area.
- Outdoor fitness should be included in one of the park locations.

- OLA would service a need that is currently not present in the area.

Cultural Improvements

- Clarify responsibility for operating, funding, and maintaining the Westwood sign in the long term.
- Acknowledge the historical land-water connection at grade changes to represent the former Lake Iroquois shoreline.
- Extend the historical alignment pavement material through the linear park.

General Feedback

- Minimize disruptions to existing infrastructure during park development.
- Coordinate with Toronto Water to clarify the integration and servicing of these parcels, and maintenance access to existing catch basins.
- Assess cumulative shadow and wind impacts from neighboring developments on park locations for programmatic spaces.
- Allow for maintenance vehicle parking.

What We Heard: IAC Meetings #1 & #2

Indigenous Advisory Circle

Accessibility and Inclusivity:

- Lack of vehicular parking makes parks inaccessible.
- Embrace all ages and provide a natural design materials approach.

Green Space and Outdoor Amenities:

- Include community gardens
- Incorporate Indigenous plantings with informative signage about their uses.
- Incorporate rain gardens

Park Design Amenities:

- Consider adding public washrooms.
- Incorporate OLA.
- Ensure each park complements what neighbouring parks lack.
- Engage an Indigenous designer for certain placekeeping elements, where appropriate.
- Include lots of seating for Indigenous gatherings, with a preference for circular/moveable seats.

Indigenous Placekeeping & Community Development:

- Integrate Indigenous art design elements into benches and park features.
- Incorporate marker trees for wayfinding; Dunkip Park could have one pointing towards the Humber River.
- Feature Indigenous placekeeping at each park, highlighting resilience, history, technological innovations, and societal contributions.
- Explore the theme of Toronto's lost rivers to connect all the parks.
- Create a medicine wheel walk at Etobicoke City Center Park.
- Perform a ceremony at Six Points Park District to re-Indigenize the land.
- Provide signage to educate the public on the history of the Indigenous plantings.
- Every park should have some sort of Indigenous marker.
- Include plaques sharing Indigenous local history, with a focus on resiliency and contributions made to larger society, throughout the park or along trails.

What We Heard: CAC Meetings #1, #2 & #3

Community Advisory Committee

Park Design Amenities:

- OLA at Six Points Park Expansion would be a good combination with the existing amenities.
- Horticultural / community garden, water fountain, or a woodlot can be incorporated in Dunkip Park.
- Multi-sports court and multi-purpose lawn are great for Etobicoke City Centre Park that can cater to young adults and teenagers free of cost.
- Include stage / amphitheatre area.
- Consider fewer program options at Etobicoke City Centre Park so it doesn't feel jammed.
- Dogs off-leash (OLA) areas are usually fenced and therefore reduce the amount of open space available for people.
- Keep and utilize mature trees to help create an "oasis" or green space that blocks out nearby traffic noise.

- Incorporate outdoor exercise in the Park District Plan.
- Incorporate amenities like BBQ stations, fire pits, smoking areas, games tables, golf / putting green, and staff meeting room.
- Include skateboarding and other youth program options in the Park District Plan.

General Feedback:

- Year-round activity for Etobicoke City Centre Park.
- Emphasized importance of accessibility and proposed RHFAC certification.
- Suggested following Ontario, Toronto, and specialty groups' accessibility recommendations.
- Recommended application for Canadian Tire Jumpstart Inclusive Play Spaces program.

What We Heard: Public Workshop #1

Accessibility and Inclusivity:

- Incorporate activities for all age groups and all abilities.

Green Space and Outdoor Amenities:

- Create green spaces with trees and seating that can be easily maintained.
- Use vegetation as a noise and traffic buffer.
- Incorporate community garden if there is high demand.

Park Design Amenities:

- Careful consideration to how amenities are distributed between four parks to ensure programmatic elements are complementary.
- Allocate certain parks for louder, active activities and other parks for quieter, passive activities.
- Include a modest-sized off-leash area, addressing the absence of nearby options.

- Incorporate horticulture garden where appropriate along with plenty of walking space.
- Incorporate sports courts, fitness amenities, opportunities for nature-based play across parks.

Community Engagement and Cultural Improvement:

- Incorporate Indigenous placenames and ceremonial spaces.
- Include art or landscape features that convey the area's history.

Safety and Functionality:

- Address concerns about noise impact from adjacent buildings, traffic, and active recreation within the parks.
- Consider the comfort of park users in both hot and cold weather conditions.

What We Heard: Public Workshop #2 & Stakeholder Meetings

Accessibility, Inclusivity, and Connectivity:

- Provide diverse amenities and programming for different age groups.
- Create connections between the new Six Points Park District and the surrounding community.

OLA (Dog Off-Leash Area):

- OLA is necessary for this growing neighbourhood.
- Park spaces should have more inclusive programming, not just an OLA.

Local Capacity & Development:

- Careful consideration to long-term planning and capacity of these parks given the amount of new development coming to the neighbourhood.

Skateboarding:

- Include a dedicated skateboarding area that is serving both youth and young families.

Trees & Plantings:

- Incorporate more green spaces and native plantings in the new Park District.
- Address noise and traffic concerns in Dunkip Park through the inclusion of berms and using naturalized greenery to create quiet moments and visual separations across all design options.

Murals & Artwork:

- Explore opportunities to integrate murals on the ground in the skate spot, or in multi-sport courts.
- Engage local artists and youth to produce artworks and murals on site.

Additional Amenities:

- Include water fountains for both dogs and people in the Park District Plan.
- Consider opportunities for food in the Park District Plan (i.e. food trucks, BBQ pits, etc.).

What We Heard: Public Survey

Seating & Gathering:

- Include adequate seating in the parks.
- Provide more private and intimate seating areas in addition to large gathering spaces.

Safety, Noise & Traffic:

- Effectively integrate trees and buffer planting to mitigate proximity to traffic and address safety concerns.
- Address safety in the evening through the integration for lighting.

Nature, Gardens & Greenspace:

- Avoid excessive use of concrete.
- Remove non-essential elements (eg: ping-pong table) in the interest of including more green and/or naturalized spaces.

Skateboarding:

- Include a dedicated skateboarding area that is serving both youth and young families.

What We Heard: Public Workshop #2 & Survey, Additional Information

Draft Park District Plan

- Appropriate programming and amenities have been located in the right parks, to meet community needs.
- Important to create a seamless connection between Dunkip Park and Islington Village, and between the new Six Points Park District and the surrounding community.
- Participants expressed a desire for simpler spaces with a preference for more green space, wooded areas and natural elements.

Six Points Park Expansion

Public Workshop

- Participants had mixed feelings about the inclusion of an OLA in Six Points Park Expansion. Many - dog owners and otherwise — indicated a need in the neighbourhood. Others felt that an OLA was an exclusive use of space that didn't serve enough people.

- There was a desire for a place for children and families, suggesting play structures or fitness areas fit best in this option.

Survey

- 56% of survey respondents preferred "Option 2 - Green Oasis", while 37% preferred "Option 1 - Small OLA."

Option 1 – Small OLA

- Plenty of shade is an important feature to include inside an OLA.
- Those in favour of an OLA suggested a larger OLA was required.

Option 2 – Green Oasis

- Most felt the balance of green and paved spaces in this design is appropriate.
- Participants emphasized the need for thoughtful consideration of safety and long-term maintenance.

What We Heard: Public Workshop #2 & Survey, Additional Information

Dunkip Park:

Public Worksop

- Participants preferred Option 1 “Linear Plaza”, however preferred the inclusion of a separate skate spot, over skateable features.
- Participants greatly appreciated the inclusion of a succession tree to replace the Elm that was recently removed.

Survey

- Participants preferred Option 2 “Two Gathering Areas” and the majority of respondents preferred a skate spot, over skateable features.

Option 1 – Linear Plaza

- The majority of the respondents were satisfied with the amount of green space.
- Concerns were raised about conflicts that would arise if skateable features and other park elements are combined.

- Some felt the feature wall with seating did not effectively use the space.
- Suggestions were made for a community garden, plenty of shade, and a general desire for more natural elements, such as trees.

Option 2 – Two Gathering Areas

- A preference for less paved area and naturalized pathways was emphasized.
- Requests for community gardens, colorful trees, and outdoor fitness areas were made.
- Participants expressed a desire for more intimate seating options. Accessibility was emphasized.
- Option 2 is favored for its separate skate area, smooth pavement, and improved layout.