

About the Master Plan

The Purpose Of The Master Plan

The Toronto Island Park Master Plan is a long-term road map that outlines a vision, defines values, establishes guiding principles, and makes recommendations to guide investment, decision-making and improvements in Toronto Island Park over the next 25+ years. It will be a living document that can be adapted over time to address changing needs.



Heritage pavilion in Toronto Island Park during 2019 flooding.

Why the Island Needed a Master Plan

The master plan addresses both challenges and opportunities, including:

- Toronto Island's one-of-a-kind identity is under-celebrated;
- The Indigenous history and ongoing significance of Toronto Island is not well-known;
- Toronto Island is a place rich in cultural and natural heritage which is currently not well recognized;
- The Toronto Island visitor experience needs to be improved;
- It can be difficult to get to and around Toronto Island;
- Toronto Island is a dynamic environment that is constantly changing;
- Toronto Island's supporting infrastructure is aging and requires investment;
- Toronto's population growth is placing increasing demand on Toronto Island Park.

Master Plan Highlights: The Big Picture

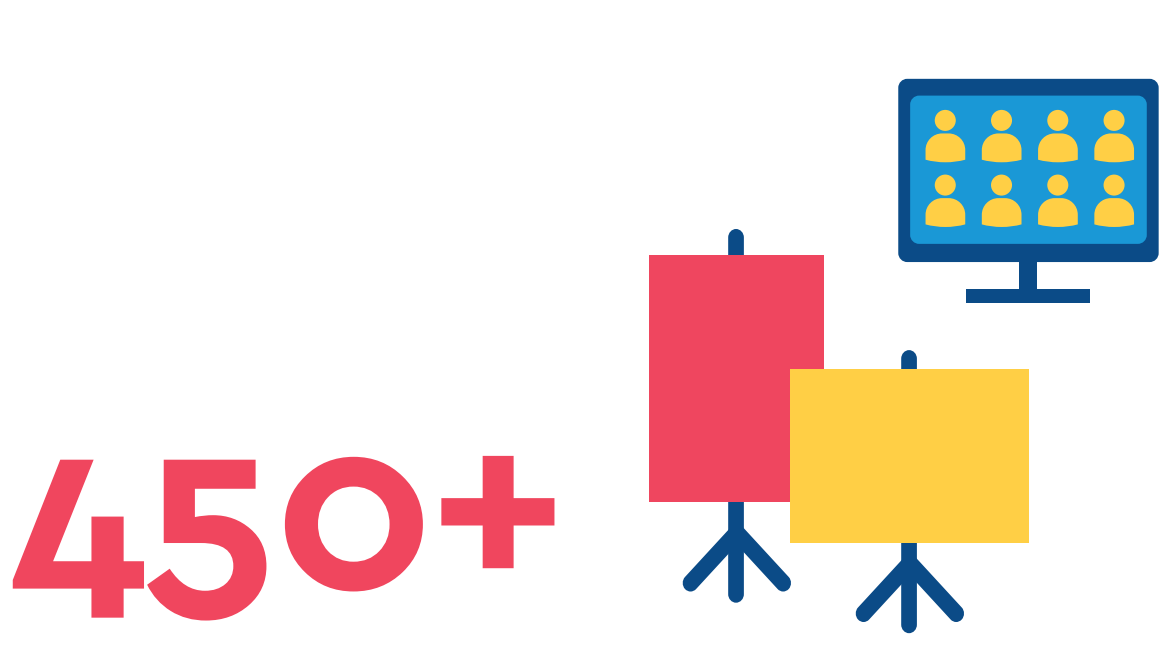
- It is the result of 4 years of strategic park planning and an iterative engagement process that reached thousands of people.
- It proposes a holistic and "light touch" approach that prioritizes the protection of the natural environment.
- The plan includes a vision, values, and guiding principles with 6 over-arching goals, and over 100 recommendations for implementation over 25+ years.
- Improvements will be made incrementally over time as priorities are established and in alignment with the approved 10-year capital budget.
- Recommendations align with ongoing initiatives and improvements, such as the ferry fleet replacement strategy (4 new ferries overall).



WHAT INFORMED THE MASTER PLAN

Engagement Snapshot

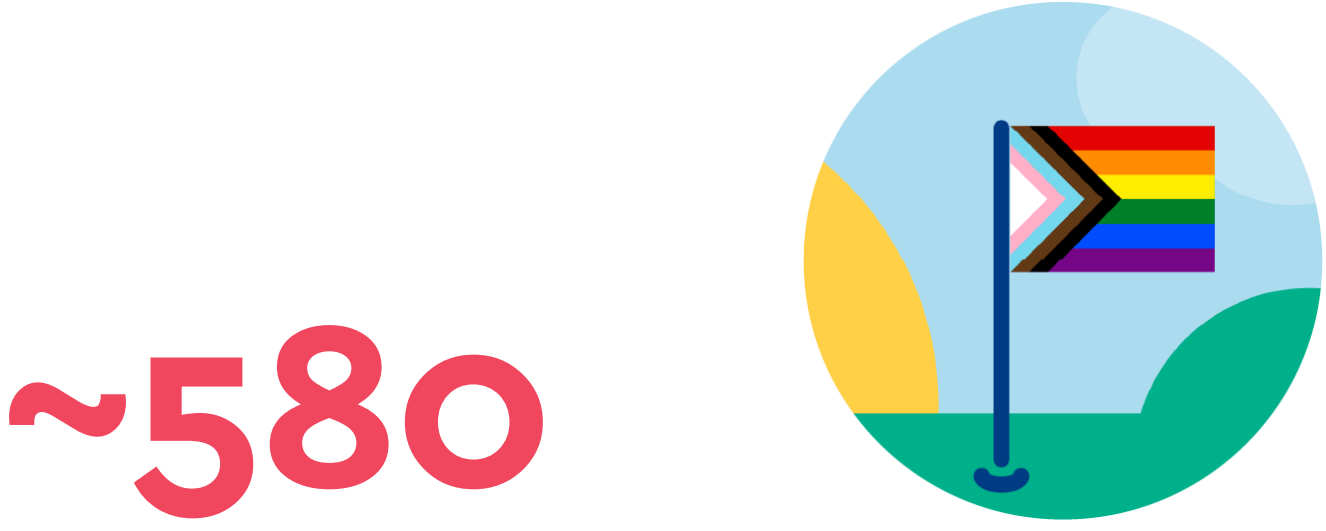
Since Spring 2021, we've heard many ideas, from thousands of Torontonians across the City and from all walks of life, who shared what they would like to see in the future of the park. Here is a snapshot of some of the engagement activities we have completed so far:



participants at 2 Virtual Public Workshops, 1 Virtual Open House, and 1 in-person Open House



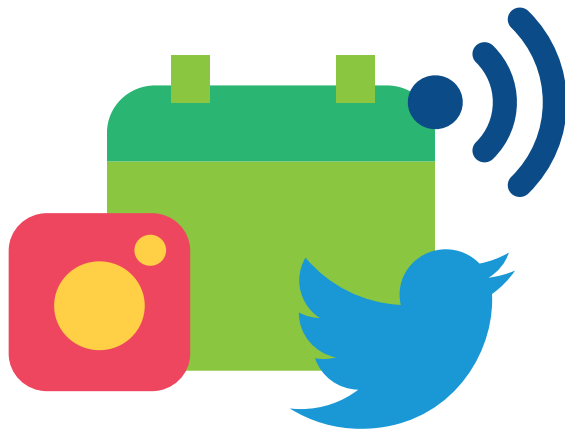
Indigenous engagement and placekeeping meetings including dialogues with First Nations, Métis and urban Indigenous communities



participants in 1 in-person and 2 virtual community meetings catering to 2SLGBTQ+ community members and Hanlan's Point Beach users, followed by an Hanlan's Community Survey survey in September, 2023

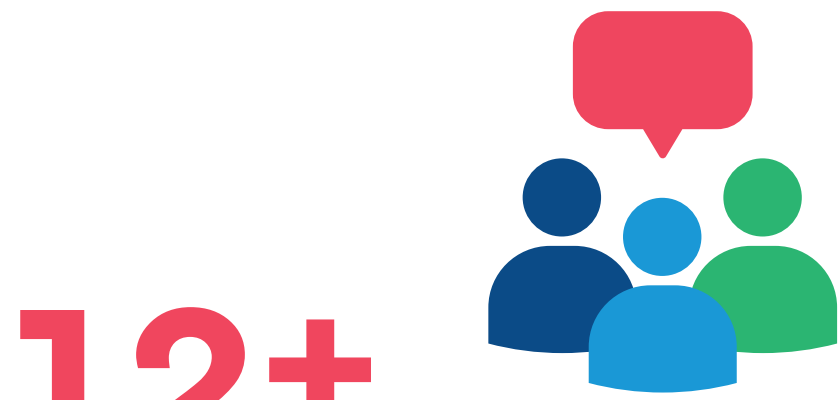


2,470 participants reached through discussion on ThoughtExchange



5.8+ million

people reached through social media promotion, with approx. 76,800 engagements

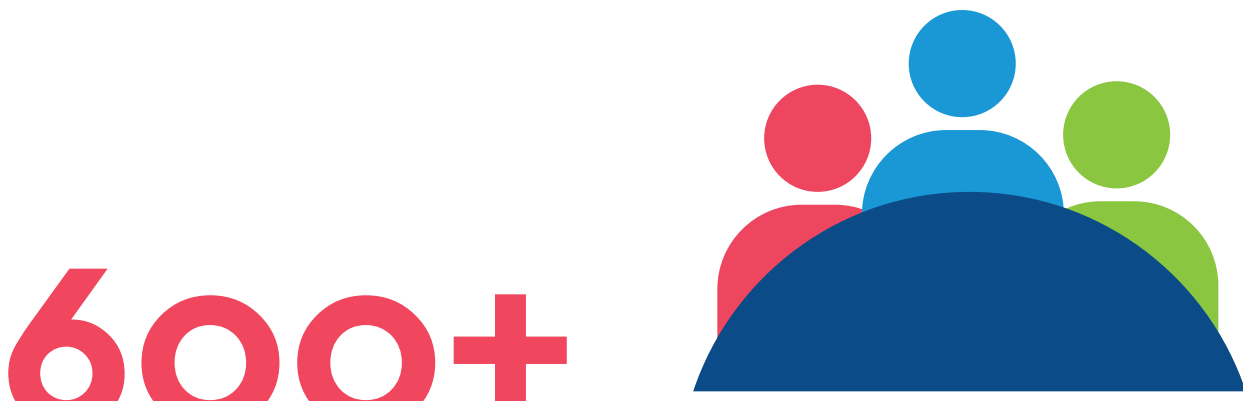


targeted discussions and focus groups, including those about Island's:

- Accessibility
- Natural Resources
- Flood Mitigation
- Programs and Activation
- Tourism and Events
- Infrastructure and Operations
- Cultural Heritage
- Businesses
- Hanlan's and 2SLGBTQ+ Communities & more



Meetings with the Technical Advisory Committee, and Community Advisory Committee including on-island and community organizations, waterfront organizations, city-wide organizations



attended the Launch Ceremony, and Forums on Indigenous Placekeeping and Belonging in Parks



youth aged 15-27 from across the city involved in the Youth Ambassador Program, led:

- pop-ups in 3 parks, and
- 2 virtual games night



online engagements with a total of approx. 20,000 respondents about:

- Visioning and What's Working Well
- Big Ideas
- Draft Demonstration Plans
- Wayfinding
- Eat, Play, Explore



4 Deep Dives and 3 Indigenous Sharing Meeting on the Master Plan goals with 160+ participants

What we heard through...

broader engagement

- People love the park and feel that, while some things could be improved, change needs to be done sensitively and carefully.
- Support for revealing the significance of the Islands to Indigenous peoples.
- Strong desire for the Plan to focus on and prioritize the protection and restoration of ecosystems and habitats.
- There's a need to acknowledge, celebrate, and protect the significance of Hanlan's Island Beach to 2SLGBTQ+ communities.
- Advice to reduce barriers and make the park easier to visit, learn about, and get around for people of all abilities.

Interest in:

- more diverse, year-round, and cheaper food options.
- seeing the park as a year-round destination through programming and upgraded facilities (like four-season washrooms).

Indigenous engagement

- Indigenous communities must be meaningfully involved in co-management, programming, and implementation.
- Ceremonial space is exciting and needs careful thinking around management, representation, and safety.
- The idea of naming and renaming is very important and must be done meaningfully.

Suggestions to:

- Make Indigenous history, identity, and living culture more visible, including through signage, interpretation, landscaping, and more.
- Create economic opportunities for Indigenous businesses.
- Create space for arts and cultural programming.

engagement with Hanlan's Point and Beach users

- Opposition to a formalized event space on Hanlan's Point (noting potential safety impacts to the 2SLGBTQ+ community and impacts to the beach and natural environment).
- Concern about the condition of Hanlan's Point Beach as a result of high lake effect, erosion and over-crowding.
- Desire for cultural markers and interpretive elements to recognize and celebrate the significance of Hanlan's Point to the 2SLGBTQ+ Community (i.e. first pride picnic).
- Advice to preserve and protect Hanlan's ecology, especially its dunes and water.
- Apprehension towards the police and commercialization.
- Concern about 2SLGBTQ+ safety and establishing ways to improve safety at Hanlan's Point

Process Overview

Scoping and Planning



Introducing the project, project team, and asking for advice on how participants wanted to be engaged in the process.

Phase 1: Towards a Vision



Identifying a Vision for the Master Plan:

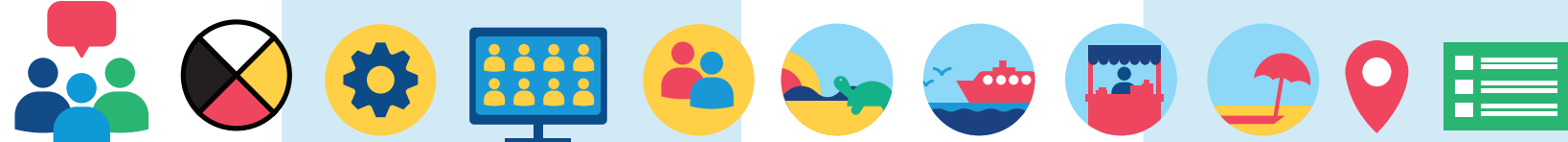
- **Meetings** with the Community Advisory Committee, the Technical Advisory Committee, and rights-holders
- **Dialogues** with First Nations rights-holders
- Virtual **project kick-off ceremony** for the public and Indigenous engagement
- Digital and analogue **engagement tools** (online visioning survey, interactive map, toolkit, and dedicated voicemail and email)
- **Sharing Meeting** with urban Indigenous audiences
- **Focus groups** with Indigenous audiences (youth, women, and 2-spirited people)
- Public Virtual **Visioning Workshop**
- **Public Forum** about Indigenous Placekeeping and how to imagine what it could mean on Toronto Island Park

Phase 2: Ideas to Concepts



Determining the Big Ideas to focus on for the project:

- **Meetings** with the Technical Advisory Committee
- Public Big Ideas **Online Engagement**
- **Workshop** with both the Community and Technical Advisory Committees to review and prioritize 130+ Big Ideas
- **Dialogues** with First Nations rights-holders
- Public Big Ideas **Workshop** sharing feedback on a list of refined Big Ideas
- **Youth Ambassador Team** of ten youth engaging with their peers across the City about the Big Ideas in the Master Plan
- **Online Survey** ("Eat Play Explore") seeking input on enjoyable experiences on Toronto Island Park



Refining the Big Ideas into Concepts:

- Series of **targeted discussions**
- **Dialogues and virtual site visit** with First Nations rights-holders
- **Meeting** with Technical Advisory Committee
- Second **Public Forum** ("Towards Belonging") discussing how parks being more welcoming and belonging to all
- **Series of meetings** with Community Advisory Committee and rights-holders to discuss a Preliminary Demonstration Plan.
- Virtual **Public Open House** sharing and seeking feedback on the Preliminary Demonstration Plan
- Four virtual **Deep Dive sessions** open to the public
- Indigenous **Sharing Meeting**
- Online Demonstration Plan **survey**
- Online **interactive Draft Wayfinding Map**

Phase 3: Confirming a Direction Forward






Sharing information about different topics in the emerging Master Plan:

- Series of **Island Pop-Ups** for the public throughout the park and ferry terminal sharing information about topics in the emerging Master Plan
- **Meetings** with the Technical Advisory Committee and the Community Advisory Committee
- **Dialogues** with First Nations rights-holders
- In-person **Public Open House** sharing and seeking feedback on the emerging Draft Master Plan and site-specific ideas
- **Series of meetings** discussing Hanlan's Island, Hanlan's Beach, and the priorities of 2SLGBGQ+ communities
- Virtual Hanlan's Event space **public meeting**
- Virtual and in-person Hanlan's Beach **Community Workshop**
- Online Hanlan's Beach **ThoughtExchange**
- Hanlan's **Community Survey** sharing and seeking feedback on new Master Plan ideas related to Hanlan's Island and Beach



Sharing the complete, final draft of the Master Plan, with potential prioritization of its proposed improvements:

- **Meetings** with the Technical Advisory Committee and the Community Advisory Committee
- **Dialogues** with First Nations rights-holders
- Indigenous **Sharing Meeting**
- Hanlan's Beach **Working Group meeting**
- In-person **Public Open House**

-  The Community Advisory Committee is composed of island, waterfront, and city-wide organizations.
-  The Technical Advisory Committee is composed of City and other public agency staff.
-  Rights-holders include Mississaugas of the Credit First Nation, Six Nations of the Grand River, Toronto-York Region Métis Council, and Huron-Wendat).

Toronto Island Today

About the Island

- 242

ha of Publicly-Accessible Parkland
- 15

Islands
(4 Water Access)
- 6

Environmentally Significant Areas (ESA)
- 1

Provincially Significant
Wetland (PSW) Complex
- 1

Trans-Continental Migratory Bird Flyway
- 4

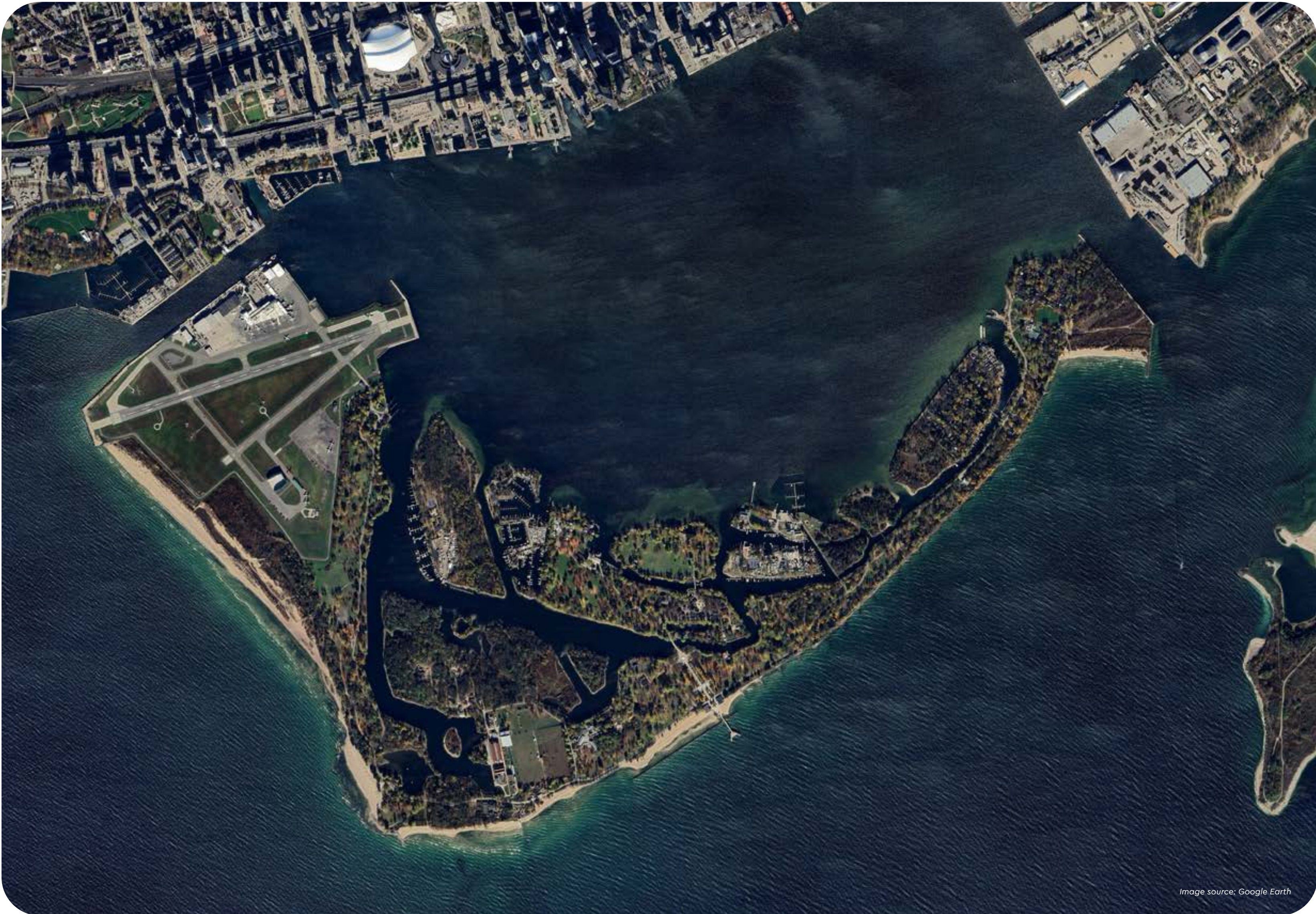
Blue Flag Beaches
(1 Clothing Optional)
- 1

Amusement Park
- 2

Remaining Year-Round
Residential Communities
- 1.5M+

Annual Visitors
(20k per day in July/Aug)
- 1000+

Years of Uninterrupted
Indigenous Presence



Vision for the Island

WE HAVE HEARD...

...THE ISLAND COULD BECOME

PROTECT + RESTORE

Toronto Island has long been a place of rest and respite for all living beings. It has been a place of healing and escape for generations of humans and a home to many unusual and significant natural habitats and wildlife that are integral to the health and resilience of local and global natural systems.

A photograph of a white egret standing in a marshy area with tall grasses and water.

Toronto Island Park will be a place where nature and community are prioritized. Where dynamic and sensitive natural environments are enriched through stewardship, education, and care. A place to seek refuge from urban life and stresses and experience the healing and restorative powers of being immersed within nature. It will be a park for generations to enjoy and call home.

HONOUR + CELEBRATE

The Island has served as a place of significance for many communities over generations, specifically Indigenous Peoples. It has been a place to meet and gather, to celebrate what makes us unique and what we share. It has long stood as common ground where all who came here were visitors and shared what the islands could provide.

A photograph of a group of people in a canoe on the water, with the city skyline in the background.

Toronto Island Park will be a place that honours the sovereignty of the land, water and sky as living beings, sharing the Indigenous significance of the territory through placekeeping, place-making, and place-revealing. It will be a place where diversity is celebrated through sharing the identity, character, and legacy of the islands by revealing all the stories, new and old.

PLAY + EXPLORE

The dynamic sand-swept landscapes of Toronto Island elicit awe and wonder every visit. Its restorative character creates ideal spaces for recreation and escape while attractions evoke nature's playground and near-endless opportunities for adventure.

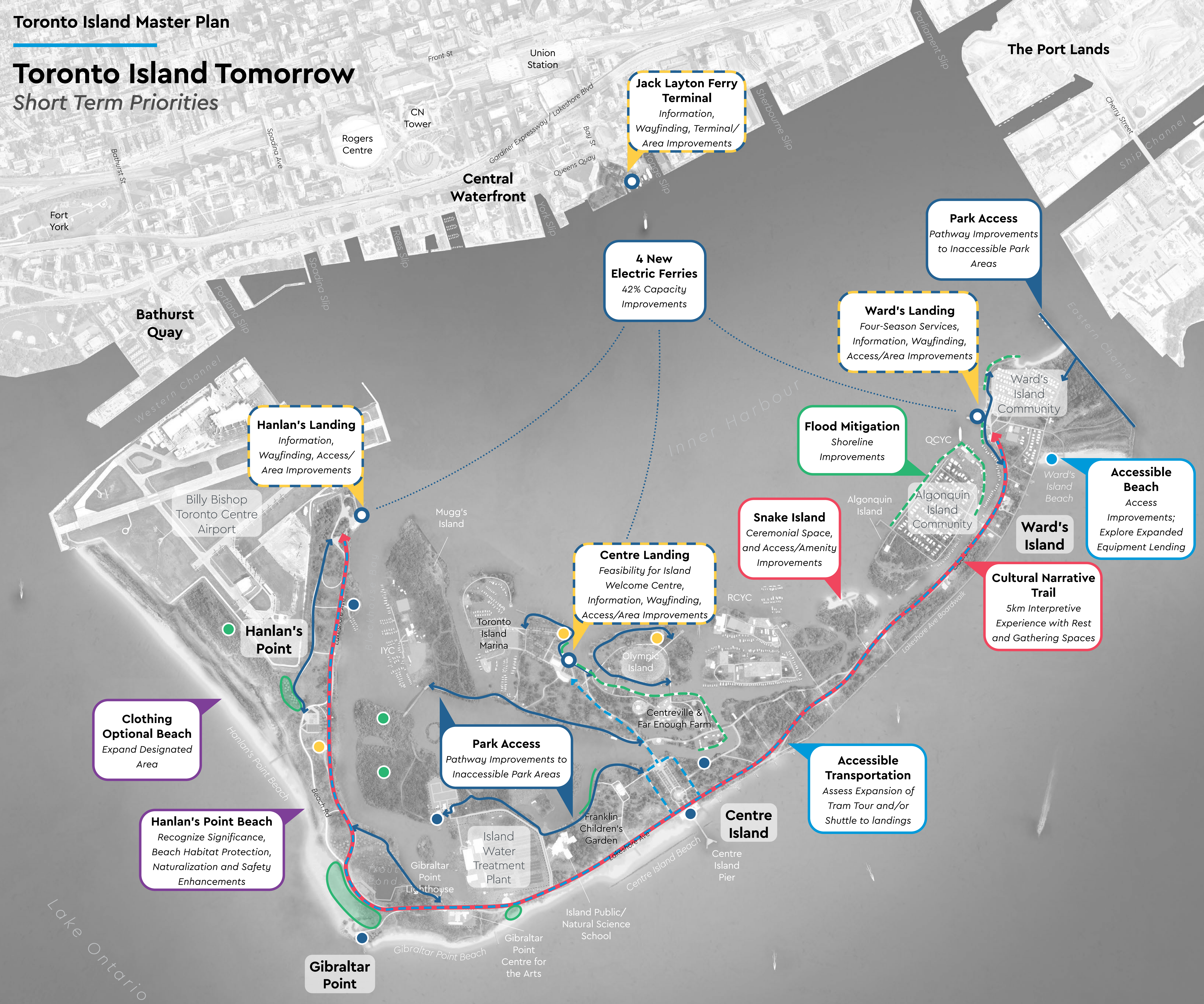
A photograph of a wooden boardwalk leading through a sandy landscape with trees in the background.

Toronto Island Park will embrace the wonder and joy of the ever-changing landscape for all ages and abilities. It will deliver experiences that embody the unique and diverse character of the city and islands—past, present, and future—and in four seasons. It will prioritize accessible spaces, experiences, and connections that invite all to come and explore the natural and man-made wonders of this one-of-a-kind place.

www.toronto.ca/IslandMasterPlan

Toronto Island Tomorrow

Short Term Priorities



What Is Included In The Study Area?

The Toronto Island Park Master Plan identifies opportunities for the islands and waterways that make up the park as well as the approach and areas surrounding the Jack Layton Ferry Terminal.

The following spaces are not included within the recommendations of the study but are considered based on their interface with other park areas and improvements:

- The residential and Island Trust managed properties at Ward's and Algonquin Islands,
- The Island Water Treatment Plant (IWTP) and radio towers on Centre Island, and
- The Billy Bishop Toronto Centre Airport (BBTCA).

Master Plan By The Numbers

5	km Cultural Narrative Trail – for Indigenous storytelling and sharing Island stories.
4	revitalized ferry landings with new information, wayfinding, seating, and more
3.5	km of enhanced or restored shoreline.
23	ha of flood-protected land.
4	new all-electric ferries with a 42% capacity increase (2 ferries in service by 2026).
2800	tonnes of greenhouse gas emissions removed (once full ferry fleet is replaced).
1	new accessible tram service (covering at least 5.5 km)

ISLAND-WIDE INITIATIVES

Rental Nodes

Expanded Rental Offerings (vary by sites); Concession and Washroom Improvements, where needed

Park Area Naturalization

Expand Habitat, Naturalize Shorelines

Natural Area Protection

Identify/Protect Ecological Function of the Park; Integrated Management Plans; Ongoing Monitoring/Reporting

Food and Beverage Improvements

Expand Diversity of Options and Explore Four-Season Service



Realizing the Master Plan

Working Towards Goals

Six goals have been identified through the development of the Toronto Island Park Master Plan. The goals work with the vision and values of the master plan to identify clear aspirations for how the Island will evolve and thrive over time. They also provide an organizing framework for the recommendations of the plan and their coordinated implementation.

REVEALING AN INDIGENOUS PLACE



Mniising, the Ojibwe name referring to Toronto Island, has long been integral to Indigenous practices, life, and ceremony. Through on-going work with Indigenous communities, spaces for ceremony, teaching and learning traditional practices, and sharing the rich and ongoing stories of this place and all its inhabitants will be identified. Through honouring the deep and uninterrupted legacy of Indigenous peoples within these lands and waters an Indigenous place will be revealed for all who set foot on the Island.

IMPROVING ACCESS AND CONNECTION

Through improvements to the ferry service, introduction of larger vessels, enhancements at all landings and investment in making getting around more accessible and comfortable for all visitors, the park will be more inviting and enjoyable.



SUPPORTING THE NATURAL ENVIRONMENT

The Toronto Islands are an ever-changing place. Formed over centuries, today's park supports diverse ecologies and works as an important part of several regional and local natural systems. Putting the needs of nature first in decision-making processes will ensure the park remains a place that supports the city and larger region for generations to come.



ENHANCING VISITOR EXPERIENCE



Toronto Island Park offers a visitor experience unlike any other with spaces that have been shaped by many hands over time. Improving communication, simplifying how things are done, enhancing what already exists, and working with partners to introduce different ways to experience the park year-round will help protect the most vulnerable spaces while creating new opportunities to enjoy the park.

ELEVATING EQUITY AND BELONGING



Belonging is central to creating a strong sense of community, safety, and well-being within a place. Toronto Island Park is a place with deep community connections that will continue to be strengthened and shared to promote inclusion and understanding.

CELEBRATING 2SLGBTQ+ SIGNIFICANCE

Toronto Island Park, and more specifically Hanlan's Point, has long been a safe space for the 2SLGBTQ+ community in Toronto and beyond to freely express themselves. Continued support for community to share and celebrate the history, legacy and significance of this place will promote awareness and safety in this beloved space.



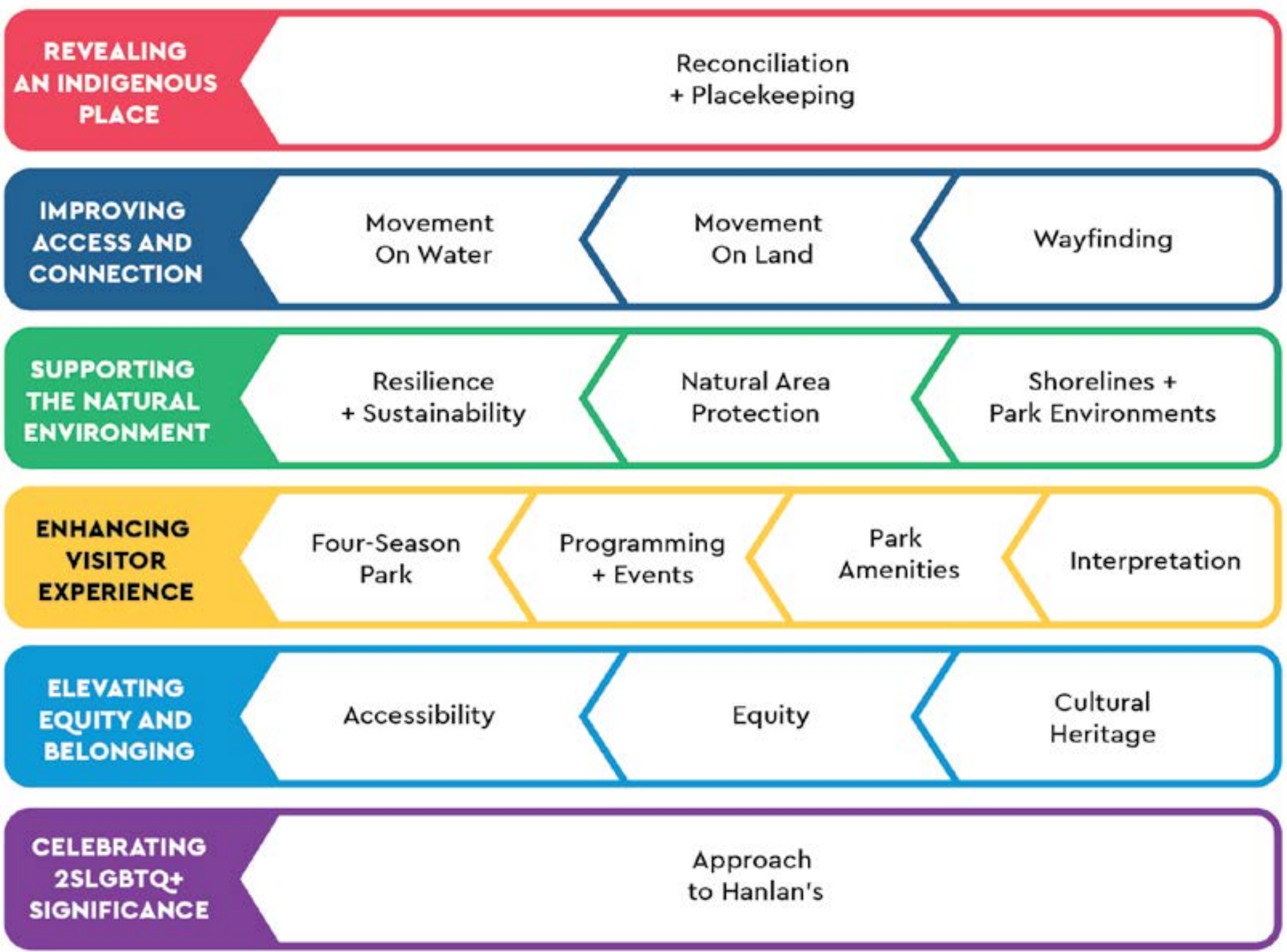
Building on Early Stages

The development of the master plan incorporated an iterative approach. As the engagement process proceeded, the team reviewed feedback against previous work to ensure consistency and integration of the values, vision and goals with the recommendations and priorities.



USING STRATEGIES TO DELIVER THE GOALS

15 strategies have been identified to help achieve the goals of the master plan. The strategies have been grouped in relation to the goal they most closely support and are complemented with a list of draft tasks to implementation which inform priorities and next steps for realizing the master plan.



Revealing An Indigenous Place

Reconciliation + Placekeeping

Description

In support of the City's commitment to the Reconciliation Action Plan, each project or improvement for the Island should consider how it can meaningfully contribute to revealing the Indigenous significance of the park, the lands, waters and skies, and the history of this territory for generations of inhabitants—considering all living beings.

Efforts to share the Indigenous significance of the Island should be prioritized in visible locations and associated with a variety of spaces and uses in the park. Design processes for all placekeeping opportunities should be led by Indigenous designers, artists or Knowledge Holders. The design and management of other spaces, and processes throughout the park should engage Indigenous communities, Elders, and Knowledge Holders to ensure cultural considerations are met and respected.

Objectives

Share Indigenous Significance

Consider opportunities for **gathering and practicing ceremony in private and public spaces**. Work with Indigenous communities, integrate **art, storytelling and language** throughout the park in both permanent and temporary features.

Improve Access from Land and Water

Support the Reconciliation Action Plan, explore ways to **reduce financial barriers and improve physical access for all** to cultural spaces.

Continue Open Dialogues

Support Placekeeping as an **ongoing process** and not tied to specific project timelines and objectives. Prioritize and support **ongoing investments and commitments**.

Honour All Living Things

Prioritize opportunities to **restore the lands, waters and skies**, and celebrate the significance of this place **for all species**—not just humans.

Build Relationships

Integrate **traditional knowledge and land-based practices** to support a decolonized approach to managing the park. Facilitate conversations to build relationships, **promote co-development, co-management**, and **expand capacity** between communities and the City.



SPACES FOR RECONCILIATION

Through engagement with community, several opportunities to reveal the Indigenous significance of the Island and create space to share Indigenous ways of knowing and being within community and for the general public were discussed. The design process for all spaces should be lead by Indigenous designers, artists and Knowledge Holders and actively engage Indigenous communities.

Revealing An Indigenous Place

DRAFT Tasks to Implementation

The following tasks have been identified to support the implementation of the master plan but are subject to change. Timing has been proposed to assist with planning but may change based on ongoing engagement, budget allocation, detail design processes, changes to site conditions, and/or opportunities to align with other initiatives.

PROJECT/INITIATIVE	UNDERWAY/ IMMEDIATE	SHORT TERM	MID-TERM	LONG TERM
Designate and Support Ceremonial Use				
▶ Identify Indigenous Ceremonial Space at Snake Island.	●			
▶ Work with communities to co-develop and update use and management protocols for ceremonial space.	●			
▶ Identify ongoing community and park amenity needs to support ceremonial use.		●		
Simplify Permit Procedures				
▶ Update permit procedures and fee structure to improve Indigenous community access.	●			
Explore Co-operative Management Protocols				
▶ Engage with Indigenous Rights Holders and communities to identify opportunities and capacity for co-management.	●			
Identify Place-Naming Opportunities and Protocols				
▶ Confirm potential locations for incorporating Indigenous naming in park spaces.	●			
Create Gateway Markers at Landings				
▶ Work with the Moccasin Identifier program to develop short term markers at landings.	●			
▶ Work with communities to co-develop vision for permanent gateway markers at landings.		●		
▶ Design and implement permanent gateway markers at landings in alignment with landing improvements.		●		
Co-develop Knowledge Sharing Protocols				
▶ Identify protocols for engaging with Rights Holders, Elders, and Knowledge Holders to explore knowledge sharing opportunities.	●			
▶ Explore Indigenous stories, teachings and narrative programming.	●			
▶ Undertake Traditional Knowledge Study.	●			
Create a Cultural Narrative Trail				
▶ Develop terms of reference to undertake visioning and overall thematic approach for Cultural Narrative Trail.	●			
▶ Identify, co-design and implement short term projects to support Cultural Narrative Trail.		●		
▶ Work with community to co-design and implement remaining projects of Cultural Narrative Trail.			●	
Develop Community Gathering Program at Olympic Island				
▶ Collaborate with Indigenous communities to identify programming needs and supporting park amenities to inform Olympic Island revitalization.				●



Improving Access and Connection

Movement On Water

Description

Getting to and from the park is central to the character and experience of Toronto Island Park. The ferry trip from Jack Layton Ferry Terminal marks the beginning and end of most visitors' journeys to the Island, but opportunities to expand reliable and consistent harbour transportation through implementation of recommendations from the Marine Use Strategy could introduce new landings to better connect the park and Central Waterfront.

Internal waterways support general circulation and tourism opportunities for charter boat tours and harbour cruises by third party providers. Many tourist vessels can only operate in specific channels and should continue to be limited to protect sensitive habitat and environmental conditions in shallower waters.

The use of the waterways for circulation and exploration of the park should be encouraged and supported through facilities and programs, including enhanced watercraft rentals but limited to waterways that can better support recreational activity away from the busy inner harbour. Designated routes and waterways should be clearly marked to indicate points of interest, landings and restricted areas.

Objectives

Enhance Travel Through the Harbour

Enhance travel within the Inner Harbour. Invest in **ferry fleet replacement** and explore **new ways of moving people and things** across the harbour.

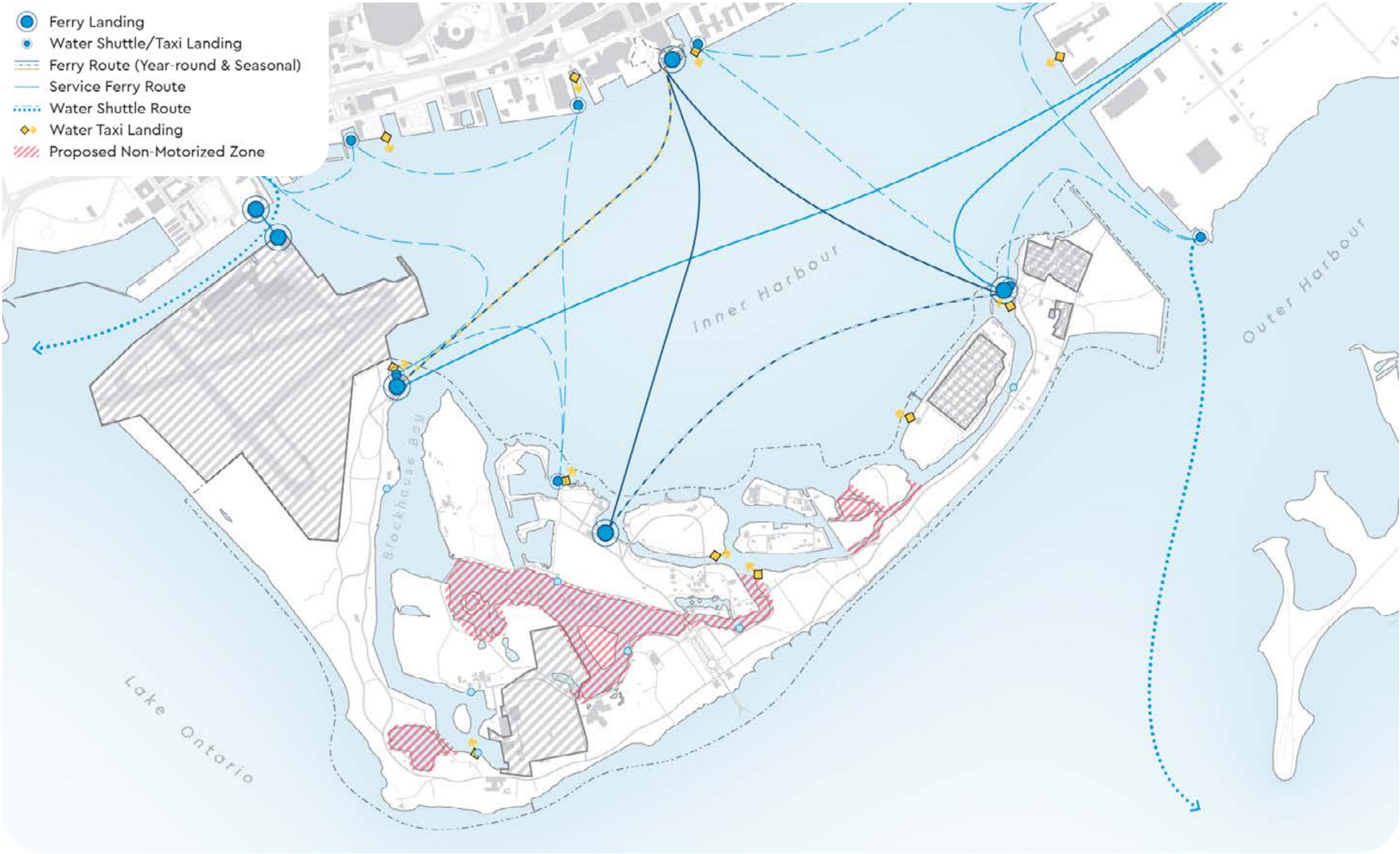


Prioritize Movement At Landings

Landings are **gateways to the park**, marking the transition between the city and the Island. Ensure landings are **accessible through four seasons** and support a **consistent visitor experience** for the park.

Reconnect Through the Waterways

Explore the internal lagoons and waterways as a **unique way to experience the park**. Develop infrastructure to **help visitors use and navigate the waterways**. Expand existing partnerships with service providers and community organizations to bring visitors of **all ages, abilities, and levels of experience** along and through the waterways.



HARBOUR MOVEMENT

Movement on the water is critical and unique experience to Toronto Island Park and should leverage improvements across the Central Waterfront, Port Lands and farther. Alignment with the Marine Use Strategy will help realize these opportunities.

Improving Access and Connection

Movement On Land

Description

Pathways and roadways throughout the park are critical to enhancing not only the visitor experience, but also accessibility and operations on the Island. A clear hierarchy of pathways should support multi-modal connections and reduce conflicts between different user groups. Pathways should support year-round uses and accessible movement through continuous, well-marked, and maintained routes.

The Island is predominantly car-free. Movement by foot and cycle should be prioritized with vehicular use limited to specific routes and times of day. Pathways and park roads should be safe and comfortable for general park use.



Objectives

Reinforce "Car-Free" Experience

Encourage active transportation (such as walking, cycling) as a **primary way to move around** the park. Design and maintain pedestrian pathways to **support accessible year-round use** and **universal accessibility**.

Expand Cycling Options

Ensure cycling facilities are consistent across the park and meet the expanding needs for park visitors. Locate supporting features (such as **racks, repair stations, and water filling stations**) at **key destinations**. Explore **expanded bicycle rental** options park-wide.

Optimize Operational Access

Promote sustainable operations for park management and services. Explore **coordinated approaches to serving the park, businesses and residents**. Plan operational movement and access to **minimize impacts on park experiences and spaces**.



PEDESTRIAN PRIORITY ROUTES

Throughout the park, pathways should be designed to prioritize pedestrian movement and support accessibility. Opportunities to enhance sustainability should be balanced with maintenance needs. Pedestrian priority pathways should be designed to support multi-use trail travel speeds and leisurely cycling and include rest areas and shelter. Widths should be optimized for demonstrated needs and avoid oversizing to establish and maintain trail hierarchy, especially near or within sensitive natural areas.

Improving Access and Connection

Wayfinding

Description

Effective wayfinding support for Toronto Island Park is critical to deliver programming and navigate the large park. Wayfinding should help communicate where to go, distances between spaces and things to do along the way. To align with other city parks, wayfinding elements within Toronto Island Park should follow the Toronto Parks and Trails (TP&T) Wayfinding Strategy.

Integrating interpretive material with wayfinding signage within the TP&T Strategy should be leveraged where appropriate to demarcate interpretive trail heads and avoid the installation of multiple signage elements close together.

Objectives

Support Natural Area Protection

Prioritize information about **where to go** and promote **use of designated pathways**. Leverage opportunities to integrate **information about the ecology and management of the park areas** to promote and **prioritize sustainability and resilience**.

Integrate Cultural Elements

Consider naming and interpretive content to enhance sense of place and share diverse stories of the Island. In collaboration with communities, consider use of **Indigenous languages or symbols** appropriate to the space and information.

Enhance Water-Based Navigation

Develop new sign types to **help navigate within the internal waterways**. Use signs to **promote water-based uses** for waterfront parks. Signage should be **resilient** and **support expansion of water-based recreation over time**.

Make Wayfinding Accessible

Align with the City's accessibility requirements. Explore a **range of formats (e.g. digital signs, audio tours, self-guided experiences, etc.) to share information** about the Island. Explore ways to develop **multi-lingual options** to make the park accessible for visitors from diverse backgrounds and cultures.



WAYFINDING FRAMEWORK

Wayfinding on Toronto Island is organized around a hierarchy of orientation and decision points, and facilities or destinations. Sign types used for each condition vary and should be informed by the specific information being communicated. Wayfinding improvements should be implemented beginning at JLFT and then in a logical sequence outward from Island landings.

Improving Access and Connection

DRAFT Tasks to Implementation

The following tasks have been identified to support the implementation of the master plan but are subject to change. Timing has been proposed to assist with planning but may change based on ongoing engagement, budget allocation, detail design processes, changes to site conditions, and/or opportunities to align with other initiatives.

PROJECT/INITIATIVE	UNDERWAY/ IMMEDIATE	SHORT TERM	MID-TERM	LONG TERM
Enhance Park Wayfinding				
▶ Update and replace park maps at landings.	●			
▶ Adapt City wayfinding standards and implementation approach for park.	●			
▶ Implement short term wayfinding improvements (landings, main routes, short term park improvements).		●		
▶ Implement mid-term wayfinding improvements (secondary routes, natural areas, subsequent park improvements).			●	
▶ Develop and implement water-based wayfinding.				●
Develop Coordinated Movement Strategy for the Island				
▶ Develop terms of reference for a park-wide study to identify pedestrian, cycling, accessible transportation, and servicing opportunities for the park.	●			
Expand Cycling Infrastructure				
▶ Explore park-wide implementation of point-to-point bike rentals.	●			
▶ Improve cycling facilities, including parking and repair, park-wide.	●			
▶ Expand recreational bike rentals to Hanlan's and Ward's Landings.		●		
▶ Expand recreational bike rentals to other island locations to support network as needed.			●	
Improve Water-based Transportation				
▶ Replace ferry fleet.	●			
▶ Improve ferry service to Ward's Landing and expand to Centre Landing to support four-season activation in park.			●	
▶ Explore dedicated servicing ferry.				●
▶ Explore water shuttle network to supplement ferry and water taxi systems within Inner Harbour.				●
▶ Identify and explore opportunities to support expanded water-based rental programs.				●
Enhance Pedestrian Access and Connectivity				
▶ Prioritize implementation of North Shore Trail as part of ongoing flood mitigation improvements.		●		
▶ Explore pedestrianized extension of Beach Road between Hanlan's Point Beach and Hanlan's Landing to support park-wide access improvements.		●		
▶ Explore pathway improvements to Toronto Island Marina and north segment of Lagoon Loop.			●	
▶ Explore opportunities to create pedestrian connection between Gibraltar Point Lighthouse and Hanlan's Mooring Wall.			●	
▶ Explore opportunity to revitalize lake wall and pedestrian connections to Eastern Channel to support park amenity improvements and Ward's Loop interpretive experience.				●
Develop Island-Wide Transportation Service				
▶ Expand Tram Tour routing to connect and stop at Hanlan's and Ward's Landings.		●		
▶ Assess requirements for on-island transportation network through a Island-wide movement strategy considering all modes of transportation.			●	
▶ Implement transportation-related service improvements.				●



Supporting the Natural Environment

Resilience + Sustainability

Description

Sustainability within the context of Toronto Island Park should consider caring for the park today and supporting the park's legacy so it can be enjoyed for generations to come. This should be supported through how the park is managed, prioritizing processes and practices that positively impact the natural environment and actively pursuing initiatives that result in positive ecological gains—building on successes over time to develop a more sustainable and resilient park.

Sustainability should also be considered as a target for buildings and development—championing reductions in carbon emissions or innovations in renewable energy and material uses. Opportunities to re-purpose existing facilities, reduce and divert waste, and prioritize biodiversity and habitat support within a highly-used public space should be prioritized.

Communicating and monitoring net gains from new initiatives (e.g. the ferry fleet modernization) with on-going innovations (e.g. the Toronto Water Solar Farm) and operational shifts should be leveraged to showcase the Island as a model for the City of Toronto's commitment to resilience.



Objectives

Prioritize Nature Positive Outcomes

Prioritize positive benefits for the Island's natural systems. **Enhance biodiversity and ecological function** within active-use and natural park areas.

Share Performance Progress

Identify performance targets to **communicate and advocate for the significance of the Island**. Explore ways to report performance to **support long-term sustainability, biodiversity gain, and resilience** within the park. **Share progress and outcomes** for individual and park-wide initiatives.

Support Habitat in Park Spaces

Leverage habitat to **enhance the ecological value** of the Island. Plan improvements to **suit level of use** as well as specific **wildlife needs** to minimize conflicts. Consider integrating design features like **bat boxes, nest boxes**—where suitable.

Integrate Traditional Knowledge and Practices

Co-develop procedures and protocols for land management throughout the park with Indigenous communities, Elders, Knowledge Holders and practitioners.

Optimize Park Operations

Scale park management and operations to park needs. Explore improvements that **benefit the natural environment** as well as park services, businesses, and residents. Adapt operations to **support four-season park uses and reduce reliance on mainland** resources and harbour transportation.

Promote Sustainable Park Spaces

Explore opportunities to **improve efficiency of spaces and reduce facility footprints**, where possible. Identify opportunities to **adapt existing structures and spaces** as well as enhance buffers to **minimize impacts on natural environment**.

Prioritize a Green Fleet

Replace equipment used on the Island with **zero-emission** options. Consider **smaller-scaled vehicles to suit Island** scale and capacities. **Leverage park amenity improvements** to reduce the need to transport equipment to the park.

Rethink Waste Management

Explore **waste reduction incentives for park businesses**, such as **compostable packaging** or **enhanced diversion programs**. Improve **communications about waste impacts** on the park.

Supporting the Natural Environment

Natural Area Protection

Description

Natural areas within the park form critical pieces of the local and regional natural systems and ecologies. These spaces should be protected and considered holistically with all improvements for the park and adjacent infrastructures. Impacts to these sensitive environments are not limited to disturbance within and at their boundaries.

To support the protection of natural areas across the Island, nature, wildlife, and an expanded understanding for natural processes should be prioritized in the decision-making framework for the park, from operations to programming. The ecological integrity and value of the Toronto Islands should be prioritized.

Within protected natural areas the gathering of foods and medicines by Indigenous peoples may be desired. Where access is needed, protocols should be co-developed with Indigenous communities, Elders, and Knowledge Holders to support this practice and minimize impacts on the surrounding areas.

Objectives

Protect Existing Resources

Assess and **identify areas for protection** to minimize human impacts on sensitive areas. Explore protection of areas through seasonal restrictions (i.e. during nesting season), as well as design and programming of adjacent spaces to **prioritize overall ecological health of park**.

Reduce Fragmentation

Actively pursue opportunities to **restore natural areas and reconnect habitat**. Manage pathways and access to **minimize habitat loss** and establishment of **invasive species**.

Enhance Edges

Identify spaces to **expand and buffer sensitive ecologies through naturalized planting and adapted management** to mitigate impacts on protected areas. Engage visitors within the naturalization processes. Develop **clear communication about suitable uses and access**.

Protect Aquatic Habitat

Manage access to some waterways to **prioritize ecological function and wildlife needs in aquatic habitat**. **Communicate the ecological importance** of aquatic habitat for the park and region. Manage human impacts on nesting, spawning, and other seasonal processes. Explore opportunities for shoreline restoration as part of on-going park improvements interfacing with the water's edge.



NATURAL AREA MANAGEMENT

The policies and management of designated natural areas on the Island should be consistent with established best practices and management plans set out by authorities having jurisdiction. Opportunities to support the resilience and biodiversity of designated natural areas through naturalization, and consolidation with other nearby ecologies (regardless of their protection status) should be prioritized.

Supporting the Natural Environment

Shorelines + Park Environments

Description

Toronto Island Park hosts a unique collection of park spaces and uses, both on the water and on land. Understanding the interdependence of water, shore and land is central to planning for the Island. Improvements at the water's edge should consider impacts on the adjacent land and vice versa. The management of shorelines and park environments should consider opportunities to enhance the value of experiences and embed resilience within park spaces. Understanding for the unique conditions and challenges of Island spaces should inform all management practices within the park.

While all shoreline and landscape features should prioritize support for natural systems, many also serve critical program and activation needs for the vibrant park. Understanding and enhancing opportunities for community benefits should be central to the management of spaces throughout the park. In addition to creating spaces that support visitor experience and enjoyment of the park, education, advocacy, and stewardship are central in supporting the cultural shifts needed to realize the long-term vision of the Master Plan. Providing opportunities for public, first-hand experience within a broad range of park environments is critical to sharing the significance and benefits of the park for the health and well being of all living things across the waterfront, city, and region.

Objectives

- Leverage Floodable Landscapes**
Reintroduce and support landscapes and spaces **designed for flooding**. Demonstrate **adaptable access and uses** during high water levels while **respecting the ecological resilience** of the park.
- Enhance Flood Infrastructure**
Enhance **park spaces** in alignment with ongoing flood mitigation EA infrastructure improvements. Consider **habitat creation, programming support, circulation and access improvements**.



SHORELINE MANAGEMENT

The Island contains a variety of edge conditions, from engineered structures to floodable landscapes. Management of these shorelines requires an understanding of their function and opportunities to benefit the overall park. The following conditions are proposed within the park and should be implemented based on their suitability within specific conditions and overall ability to enhance the ecological or program benefits for the park.

Supporting the Natural Environment

Shorelines + Park Environments

Objectives (cont.)

Promote Biodiversity

Prioritize use of **naturally-occurring or adapted ecologies** to enhance sustainability and resilience park-wide. Leverage increased biodiversity to **support and enhance low-intensity management practices**. **Communicate benefits of biodiversity** as part of park management practices.

Naturalize Park Spaces

Identify park spaces adjacent to and between designated natural areas for naturalization. **Prioritize habitat links** and "stepping stones" to **enhance overall park resilience**. Encourage biodiversity to **support variety of habitats and conditions**.

Encourage Relationships with Park Environments

Continue to leverage planting and park clean-ups to **promote awareness about the park's ecological value** and the **importance of protecting park spaces**. Engage communities with limited access to nature to **support city-wide stewardship and equity initiatives**.



PARKLAND CHARACTER

Throughout the Island, many programmed park environments and spaces contribute to the ecological function of the park. The management of these spaces should consider both the active uses and supporting habitat and wildlife throughout the park.

Supporting the Natural Environment

DRAFT Tasks to Implementation

The following tasks have been identified to support the implementation of the master plan but are subject to change. Timing has been proposed to assist with planning but may change based on ongoing engagement, budget allocation, detail design processes, changes to site conditions, and/or opportunities to align with other initiatives.

PROJECT/INITIATIVE	UNDERWAY/ IMMEDIATE	SHORT TERM	MID-TERM	LONG TERM
Expand Habitat and Invasive Species Management				
▶ Support ongoing habitat and invasive species management.	<div></div>			
▶ Identify opportunities for naturalization and habitat restoration in park areas.	<div></div>			
Address Flood Mitigation Impacts				
▶ Implement Toronto Island Flood Mitigation EA recommendations.	<div></div>			
▶ Explore expanded flood mitigation study for Olympic Island.			<div></div>	
Enhance Nature-Based Education and Advocacy				
▶ Explore opportunities to expand partnerships to deliver nature-based public programming and education within the park, including Indigenous teachings and land-based practices.	<div></div>			
▶ Identify opportunities to expand partnerships with Indigenous and non-Indigenous communities, educational institutions, and allied organizations to contribute to park management.	<div></div>			
▶ Identify trail-based interpretive and educational opportunities in alignment with park-wide interpretive strategy and management plan recommendations.			<div></div>	
Manage Natural Area Access				
▶ Identify natural area access priorities and trail improvement opportunities.	<div></div>			
▶ Develop program to consistently fund natural area access pathway management throughout the park to minimize impacts and maintain accessibility, as suitable.	<div></div>			
▶ Explore feasibility of Parks Yard restoration loop and south segment of Lagoon Loop in alignment with Parks works facility improvements.			<div></div>	
Develop Island Charter				
▶ Work with Working Groups to co-create social protocols to support stewardship of the Island.		<div></div>		
Create Integrated Park Management Plan				
▶ Develop plan to coordinate management of natural areas and actively programmed park spaces.		<div></div>		
Develop Transparent Monitoring and Public Reporting Protocols				
▶ Identify monitoring and public reporting protocols for supporting public communication of park performance.		<div></div>		
▶ Undertake ongoing public reporting of park performance in alignment with communications strategy for park.		<div></div>		
Undertake Park-wide Facility and Resource Improvements				
▶ Evaluate Parks works facility locations and management procedures and implement improvements.		<div></div>		



Enhancing Visitor Experience

Four-Season Park

Description

The Island is a place that can be enjoyed at any time of year but expanded support through facilities, park amenities, and activation are needed to turn the Island into a year-round destination. Programming considerations should embrace the seasonal change throughout the park. Washrooms and visitor amenities need to be available at all seasons and activation nodes and designed and planned to operate through winter.



Objectives

Prioritize Year-round Access

Explore **off-peak access improvements** to create year-round experiences on the Island. Identify opportunities to **provide seasonal access in diverse spaces throughout the park** to support a variety of four-season uses.

Share Management Practices

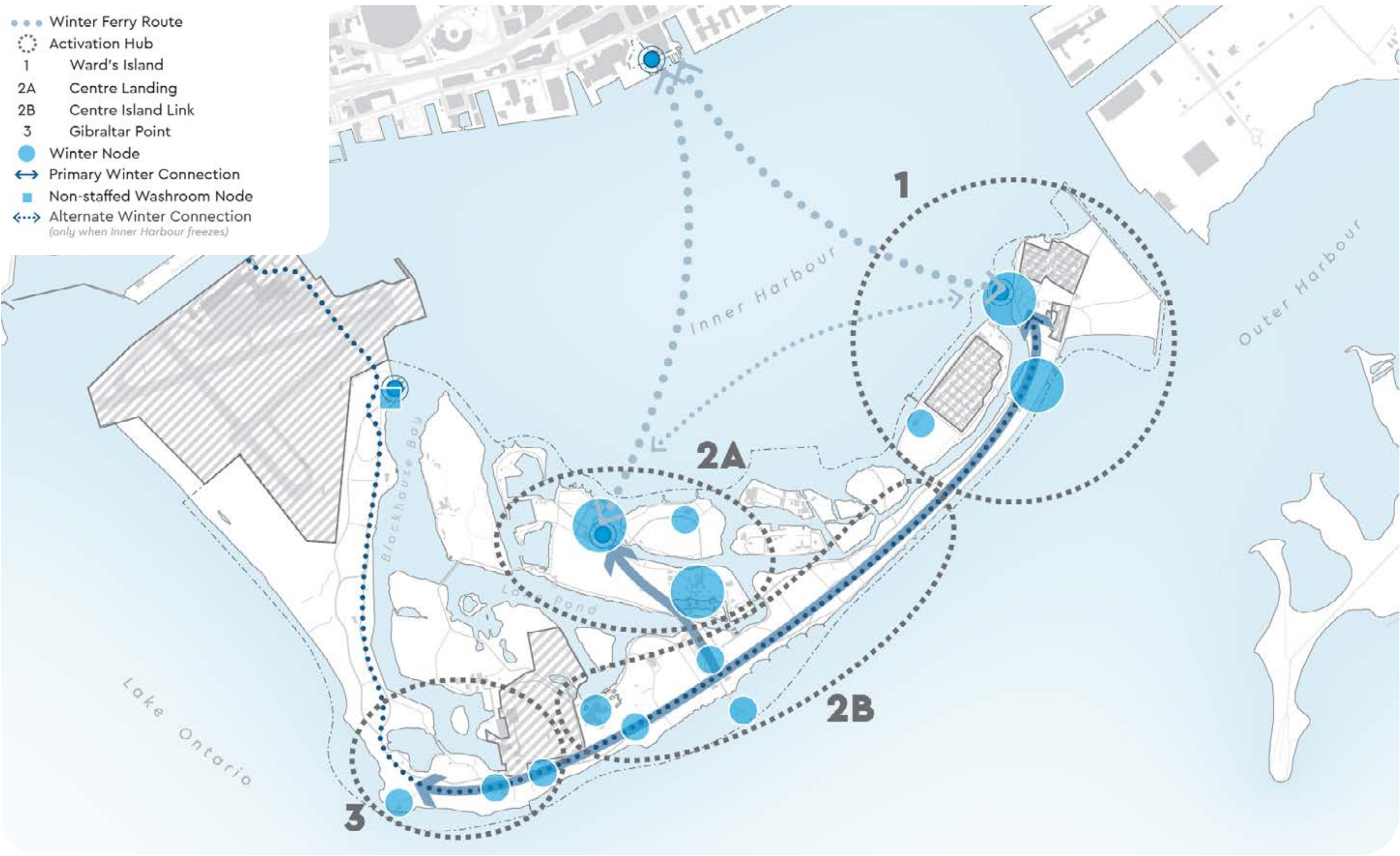
Use communications about temporary or seasonal access impacts (such as nesting season) to **support awareness about the natural processes of the park**. Share management practices to **educate park visitors about habitat, wildlife and park benefits**.

Activate Beyond Summer

Explore four-season programming and activation for the park **in alignment with service improvements**. Prioritize programs and events outside summer to **support park experiences in all seasons**.

Modernize Facilities

Prioritize improvements of park facilities at **Winter Activation Hubs** and to support sustainable activation of the park. Leverage upgrades to **improve the overall sustainability and resilience of the park year-round**. Consider opportunities to **adapt existing structures for new public uses** and promote the cultural heritage value and character of the park.



PLAN FOR WINTER ACTIVATION

To ensure an enjoyable and reliable experience for visitors to the park, winter activation and programming should be linked to locations where winter shelter and existing facilities suitable for off-peak seasonal uses can be supported. Progressive expansion should consider ferry service, opportunities to build programs gradually, test capacity and interest over several seasons, and adapt and innovate services and program delivery at various scales.

Enhancing Visitor Experience

Programming + Events

Description

Programming and events within the park have traditionally focused on the summer months. Opportunities to expand ongoing programming and special events should focus on supporting the four-season experience of the Island and identifying partnerships that enhance and invest in the park over time. Opportunities to partner with Indigenous communities and Indigenous-led businesses in the development and delivery of tourism services that reflect the Indigenous significance of the park should also be supported.



Objectives

Build On Successes

Celebrate and continue to invest in the spaces that make the park a destination. Target improvements to **enhance spaces and respect the park's natural character.** **Align seasonal programming and services** with expansion of four-season park experiences and access.

Connect to City Experiences

Explore opportunities to collaborate with community festivals, events and programming throughout the city to **deliver Island-scaled experiences.** Consider co-program opportunities with other waterfront partners to **support a vibrant culture across the city's waterfront.**

Prioritize Island-Scaled Activation

Develop an **Island events strategy** to inform protocols to host events within the park. Identify suitable spaces for events that **minimize impacts on natural areas and established park uses.** Consider events that **align with the values and character of the park.** Establish permit processes that are coordinated with value or protecting the natural environment of the park as a priority.

Prioritize Community

Support opportunities to hold community programming or events on the Island. Work with community to identify suitable spaces, sizes and operational practices (including ferry and resource scheduling improvements) that **help plan, reduce barriers and respect the capacity of the park.**

Integrate Art

Use art to **enhance the experience of the park through all seasons.** Encourage installations that share the **layered history of the park and cultural significance** of park spaces. Consider art (temporary and permanent) as a **way to program and activate park spaces.** Encourage installations that **respond to and respect unique site conditions and views** within existing active park areas.

Provide Consistent Information

Make information about the Island **easy to access and consistent.** Develop a communications strategy for the Island to **align website, public information, and wayfinding** to **help visitors plan their visit and find what they need.**

Enhancing Visitor Experience

Park Amenities

Description

Visitors need to feel confident that the Island's amenities will support their visit. Clear communications about what services and amenities are available at various times of year and at various island locations is critical to supporting consistent and quality experiences on the Island.



Objectives

Adapt to Changing Visitor Needs

Expand concessions, retail, and park services to align with four-season park use. Introduce scalable options that **respond to seasonal programming**. **Cluster activities** and offerings at hubs to optimize service delivery. Prioritize opportunities that **adapt existing structures** to additional uses or expand seasonal options.

Revitalize and Reinvest

Prioritize amenity upgrades to **leverage what already works**. Prioritize improvement to services and offerings that are **unique to the park or support ongoing resilience and sustainability** objectives.

Prioritize Choice and Flexibility

Provide **diverse and equitable food options** and experiences within the park. Support options that can **easily scale and relocate to meet seasonal needs**. Consider short-term agreements to **support pop-ups and pilots** allowing independent businesses to access the Island.

Create Comfortable Spaces

Site furnishings for the park should be consistent park-wide and **enhance the established character and function of park spaces**. Design of spaces should consider accessible approach widths and spaces for mobility devices from all landings and out into and around the park.

Enhance Lighting

Explore lighting improvements park-wide to **support safety year-round, enhance sustainability, and reduce light pollution on habitat and wildlife**. Ensure **all lighting meets dark sky requirements**.

AMENITY HUBS

Amenities should be clustered to minimize impacts on the park and create destinations to support programming within the park. Integrate shelter within all amenity hubs to support year-round use of the park.

Enhancing Visitor Experience

Interpretation

Description

The complex history of the islands as a natural environment, a place of ceremony and healing for Indigenous peoples, and a refuge makes it an ideal place to develop a land-based practice of commemoration, interpretation and storytelling. Diverse Island stories should be represented through a variety of media, both permanent and temporary, and include exciting and thought-provoking displays and methods of communication through flexible spaces and programming.

Interpretive material for the park should be planned as open-air and immersive experiences that encourage visitors to explore and learn as they move through the islands, both on land and water through a layered and coordinated four-season strategy.



Objectives

Celebrate Natural Heritage

Share stories and information about the **natural spaces, wildlife, restoration and management practices** that can be experienced across the islands and waterways. Share the **significance of the Island's role within regional and local ecological systems**.

Storytelling Through Activities and Art

Design spaces and use art to **support creative storytelling** about the park. Consider opportunities to **link spaces as part of interpretive experiences**. Explore the **use of performance or cultural programming to contribute to storytelling** on the Island.

Share Indigenous Knowledge

Engage with Elders, Knowledge Holders and practitioners to co-develop programming to share traditional knowledge. Explore opportunities to **support sharing of traditional land-based teachings and cultural programming** throughout the park and considering an ongoing coordinated approach.

Explore Digital Storytelling

Explore developing digital resources to enhance interpretation and storytelling within the park. Identify opportunities to **build on existing resources and experiences to improve digital access to information** (such as the Island Stories campaign, or Toronto Island Guide app).

INTERPRETIVE ROUTES

The Island is a large park with many unique and significant spaces and features. Interpretive routes should be informed by cultural heritage and interpretive studies to share stories of the lands, waters, wildlife, and communities of the Islands. Interpretive routes can take a variety of forms and should explore opportunities to layer information to reflect the complexity and significance of the park for diverse interests and worldviews.

Enhancing Visitor Experience

DRAFT Tasks to Implementation

The following tasks have been identified to support the implementation of the master plan but are subject to change. Timing has been proposed to assist with planning but may change based on ongoing engagement, budget allocation, detail design processes, changes to site conditions, and/or opportunities to align with other initiatives.

PROJECT/INITIATIVE	UNDERWAY/ IMMEDIATE	SHORT TERM	MID-TERM	LONG TERM
Upgrade Park Visitor Services				
▶ Improve park website to address accessibility, usability, and future four-season operations.				
▶ Improve visitor information services at landings, prioritizing Jack Layton Ferry Terminal.				
▶ Expand interpretation and Island information sharing.				
Celebrate Island Character				
▶ Develop Island Interpretive strategy.				
▶ Develop digital interpretive material to supplement and pilot delivery of enhanced interpretive experience for park.				
▶ Identify opportunities for public art throughout the park in alignment with both interpretive strategy and public art strategies.				
Develop Island Ambassador Program				
▶ Pilot Island Ambassador programs at landings to support wayfinding and information sharing at points of arrival.				
▶ Explore park-wide Island Ambassador programs to support park programming and activation.				
Revitalize Ferry Landings				
▶ Improve Jack Layton Ferry Terminal visitor experience.				
▶ Explore landing improvements to support four-season ferry services at Ward's and Centre Landings.				
▶ Expand four-season services at Ward's and Centre Landings.				
▶ Explore feasibility for a marketplace at Centre Landing and pilot approach.				
▶ Implement Centre Landing marketplace.				
Expand Four-Season Park Uses				
▶ Prioritize year-round facilities (washrooms, shelters) at identified Winter Activity hubs.				
▶ Develop four-season program aligned with Winter Activity hubs.				
▶ Explore expanded four-season food and beverage opportunities aligned with Winter Activity hubs.				
Coordinate Island Communications				
▶ Develop Island communications approach to support consistent information sharing and visual identity for the park.				
Create an Island Welcome Centre				
▶ Explore feasibility for Island Welcome Centre and program opportunities to support four-season activation.				
▶ Design and implement Island Welcome Centre and initiate supporting programming.				
Enhance Park Facilities and Infrastructure				
▶ Prioritize revitalization of park facilities impacted by flooding (Grandstand).				
▶ Develop Island-wide events strategy to inform space needs and locations for events park-wide.				
▶ Expand water filling station locations.				
▶ Expand communications coverage and access (Wi-Fi and cellular).				
▶ Explore opportunities for adaptive reuse and revitalization of structures throughout the park.				
▶ Identify opportunities for Olympic Island revitalization.				
▶ Explore feasibility for enhanced Gibraltar Point pavilion to support new activity hub.				
Expand Food and Beverage Options				
▶ Expand food and beverage diversity park-wide.				
▶ Explore opportunities for revitalizing existing concession locations to expand offerings and implement improvements.				
▶ Identify opportunities for new concession locations to supplement existing sites and address gaps in service.				
Expand Rental Offerings				
▶ Identify opportunities for rentals to serve park uses (chairs, umbrellas).				



Elevating Equity and Belonging

Accessibility

Description

The Island is a place anyone should be able to enjoy without physical barriers. The park should include opportunities to: experience the land and water; venture out on the sandy beaches or into the wilderness using pathways designed for mobility devices; hear the quiet birdsong in the middle of a wetland; or join friends for a snack break after a long morning of paddling next to an accessible boat launch. Physical accessibility should be considered for any activity.



Objectives

Prioritize Accessible Experiences

Consider experiences that **support independent and assisted active recreation opportunities**, including land and on the water. Identify opportunities to **partner with organizations to support existing programs**, such as the Blind Sailing program. Promote activities that consider neuro-diversity and broader sensory experiences to enhance universal accessibility within the park.

Facilitate Accessible Movement

Prioritize **comfortable and intuitive movement** between destinations. Explore accessible movement options **from the ferry landings to destinations throughout the park** and integrate opportunities for interpretation as part of the experience.

Expand Accessible Equipment Lending

Explore opportunities to **provide accessible equipment lending** and staffing throughout park to suit the activities of the immediate surroundings. At beach locations, **consider mobility devices that can operate on sand and in the water**. Prioritize options for accessible movement around the park beginning at landings.

Create Accessible Spaces

Ensure new and enhanced facilities meet the City's design standards for accessibility. Design new pathways and bridges to **alleviate physical obstacles to exploring the park**. Where adapting significant heritage features, **ensure accessibility improvement are informed by an understanding of the cultural heritage value**. Within park spaces, **incorporate a variety of conditions to reflect support users of a range of ages, abilities, and sizes**.

Elevating Equity and Belonging

Equity

Description

The Island should be a place that anyone can enjoy, regardless of the age, ability, what communities they belong to, or how they identify. Part of that comes from how visitors access and interact with services, staff, and spaces. It is also informed by who is able to access the spaces. The Island should be a place where procedures and services are simple to navigate, open, and intuitive. Protocols should alleviate barriers for people who may not have detailed knowledge of the Island.



Objectives

Address Representation

Create diverse spaces to attract and support independent vendors, service providers, and artists to operate across the park. **Co-develop cultural markers** with communities to help **identify spaces of significance**. Integrate digital and physical elements **supporting multiple languages in wayfinding and interpretation** to enhance inclusion and cultural sharing in the park.

Honour Diverse Stories

Work with communities to **collect, interpret, and celebrate the diverse stories of the Island** through meaningful engagement processes. Explore ways to **share stories from multiple perspectives** throughout the park to **demonstrate the rich cultural significance of the Island**.

Relieve Economic and Cultural Barriers

Identify and reduce factors limiting experiences on the Island for all visitors. **Promote affordable and partner-supported programs and services** throughout the park. Explore processes to **attract diverse, independent operators** to Island spaces. Improve access to and distribution of picnic areas, shelters and BBQs to **support gathering on the Island**.

Collaborate Through Management

Engage with Rights Holders, Indigenous communities, community organizations, schools, and the public (including Island residents) to **identify ways to care for the Island collaboratively**. Explore co-management of ceremonial spaces with Indigenous communities to **ensure respect for cultural protocols**.

Prioritize Community Well-being

Ensure the park is welcoming and safe for any visitor. Prioritize opportunities to address community safety throughout the park using a wellness and harm reduction protocol. Engage with community service providers to **inform a Community Safety Plan for the Island**. Identify operational considerations that **support safety for vulnerable park users and emergency protocols**.

Elevating Equity and Belonging

Cultural Heritage

Description

The Toronto Islands are a place of deep significance and meaning for Indigenous cultures, Island residents, 2SLGBTQ+ communities and the broader city. Understanding the significance and celebrating stories should be prioritized as part of the ongoing cultural heritage work for the park. Additionally, some significance exists holistically throughout the entire landscape. Opportunities to celebrate the significance of the park should consider both an understanding of physical elements and the connections and relationships between cultures, places and the environment.

The understanding of cultural heritage is not universal and what is considered significant varies greatly between cultures. Additionally, the form of heritage interpretation should reflect the communities it references. To support respectful and meaningful processes and ensure stories reflect the voices of those documented, development of resources and histories should be co-created with the communities they reference and celebrate.



Objectives

Reveal Untold Stories

As informed by the Cultural Heritage Resource Assessment (CHRA), undertake studies to **identify cultural significance within the park for various communities**. Expand the existing understanding of the park and support equity objectives for the park and city. Consider **Traditional Knowledge studies and oral history projects** (i.e. Indigenous, Island Residents, 2SLGBTQ+, etc.) to document stories in collaboration with communities.

Celebrate Diverse Communities

Explore opportunities to **share broad experiences and perspectives in complementary and coordinated approaches**. Layer stories of distinct voices (such as residents and Indigenous communities) to **demonstrate unique values and significance within shared park spaces**. Engage with communities to identify stories and improve representation with the park's history and interpretation.

Explore Land and Water

Investigate archaeological potential within land and maritime contexts. Leverage ongoing studies to inform further cultural heritage studies about the **history and significance of land and water-based uses** for the Island.

Protect Existing Features

Identify priorities for **protecting and designating existing structures and features** in the park. Prioritize a **Cultural Landscape Study for the overall park as well as independent studies for specific features and areas** as recommended by the CHRA. **Integrate conservation protocols and heritage impact measures** for any park improvement at **early design stages**.

Share Significance

Use stories to inform interpretive strategy for the park. Leverage study findings and existing structures and spaces to **inform interpretation of Island heritage**. Explore diverse ways of sharing histories, both through physical elements and activation opportunities.

Elevating Equity and Belonging

DRAFT Tasks to Implementation

The following tasks have been identified to support the implementation of the master plan but are subject to change. Timing has been proposed to assist with planning but may change based on ongoing engagement, budget allocation, detail design processes, changes to site conditions, and/or opportunities to align with other initiatives.

PROJECT/INITIATIVE	UNDERWAY/ IMMEDIATE	SHORT TERM	MID-TERM	LONG TERM
Establish Island-wide Community Advisory Committee				
▶ Develop terms of reference for standing committee to advise on park-wide improvements.	●			
Enhance Park Accessibility Services				
▶ Expand accessible equipment lending programs and communications about services at landings.		●		
▶ Explore community partnerships to deliver accessible programming.			●	
▶ Develop accessible equipment lending services and programming for beaches.			●	
Improve Pathway Accessibility				
▶ Expand rest areas and shelters alongside pathway improvements.	●			
▶ Assess park-wide accessibility.		●		
▶ Implement accessibility improvements for pathways and bridges.		●		
Establish Community Safety Plan				
▶ Develop Community Safety Plan for full park to address emergency preparedness and community well-being.		●		
Enhance Affordability of Island Experiences				
▶ Explore opportunities for reducing economic barriers for accessing Island.		●		
▶ Expand affordable programming and rentals park-wide.			●	
Enhance Diversity in Island Interpretation				
▶ Undertake cultural heritage studies to expand diverse understanding of Island significance and inform interpretive strategy.	●			
▶ Explore partnerships to enhance diverse representation through art-based installations and programming.	●			
Enhance Park-wide Accessible Movement				
▶ Develop short term accessible transportation options for all landings in alignment with park-wide movement strategy.		●		
▶ Explore integration of accessible transportation as part of proposed Island transportation service.			●	



City of Toronto Archives, Fonds 16, Series 71, Item 5074



Celebrating 2SLGBTQ+ Significance

An Approach to Hanlan's

Description

For more than half a century, Toronto Island Park – and particularly Hanlan's Point Beach – has been a place of refuge for Toronto's 2SLGBTQ+ communities. The history of Hanlan's Point is deeply entwined with the 2SLGBTQ+ rights movement in both Toronto and across the country. Its importance as an inclusive and welcoming space, including its designation as one of the only clothing-optional beaches in Canada, makes it a place to be celebrated and protected.

Recently the beach and its surrounding area have suffered from the significant impacts of high lake levels and erosion, which have reduced the overall size of the beach and impacted the safety and enjoyment of beach users. Ongoing efforts to expand the clothing-optional area, enhance the ecology of the beach and dunes, and share the unique significance of Hanlan's should prioritize active and meaningful engagement with the Hanlan's communities.

The following approach draws together recommendations from the preceding strategies as well as initiatives specific to Hanlan's to ensure that the integrity of Hanlan's Point Beach as a safe space for 2SLGBTQ+ communities is both maintained and strengthened.



Objectives

Deliver A Community-Guided Process

Inform improvements through **meaningful community input**. Establish a **working group for Hanlan's specific improvements**. Develop collaborative processes to **reflect the values of the users** and **respect the conditions that make Hanlan's Point special**.

Protect Beach Ecology

Enhance the ecological function and health of the beach, dune and vegetated buffer at Hanlan's Point Beach. Restore and expand **naturalized planting**. Explore development of an environmental assessment to **inform and support long-term protection and potential for expansion of the beach**.

Prioritize Community Safety and Well-Being

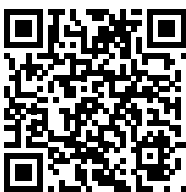
Acknowledge the significance of Hanlan's Point Beach **for 2SLGBTQ+ communities**. Work with beach users to **develop a Hanlan's Point Beach Safety Plan** that leverages community stewardship to ensure the unique needs of 2SLGBTQ+ and nudist users are prioritized. Explore partnerships to support a harm reduction and community safety approach. **Address safety** concerns in beach spaces, **including natural areas and along pathways**, with consideration for **limiting impacts on the sensitive ecologies**.

Reveal Cultural Significance

Undertake a **focused cultural heritage study for Hanlan's Point**. Use findings to communicate the history and significance of Hanlan's Point Beach as one of Canada's oldest and most significant 2SLGBTQ+ spaces. Prioritize opportunities to **share the rich significance of the area**, including the Gay Day Picnic in 1971, an event deeply tied to the emergence of Canada's gay rights movement.



Island Stories: A meaningful refuge for the LGBTQ2S+ community (<https://youtu.be/h72wkJX-BdQ?si=i0q0q9qxp0dfJUKG>)

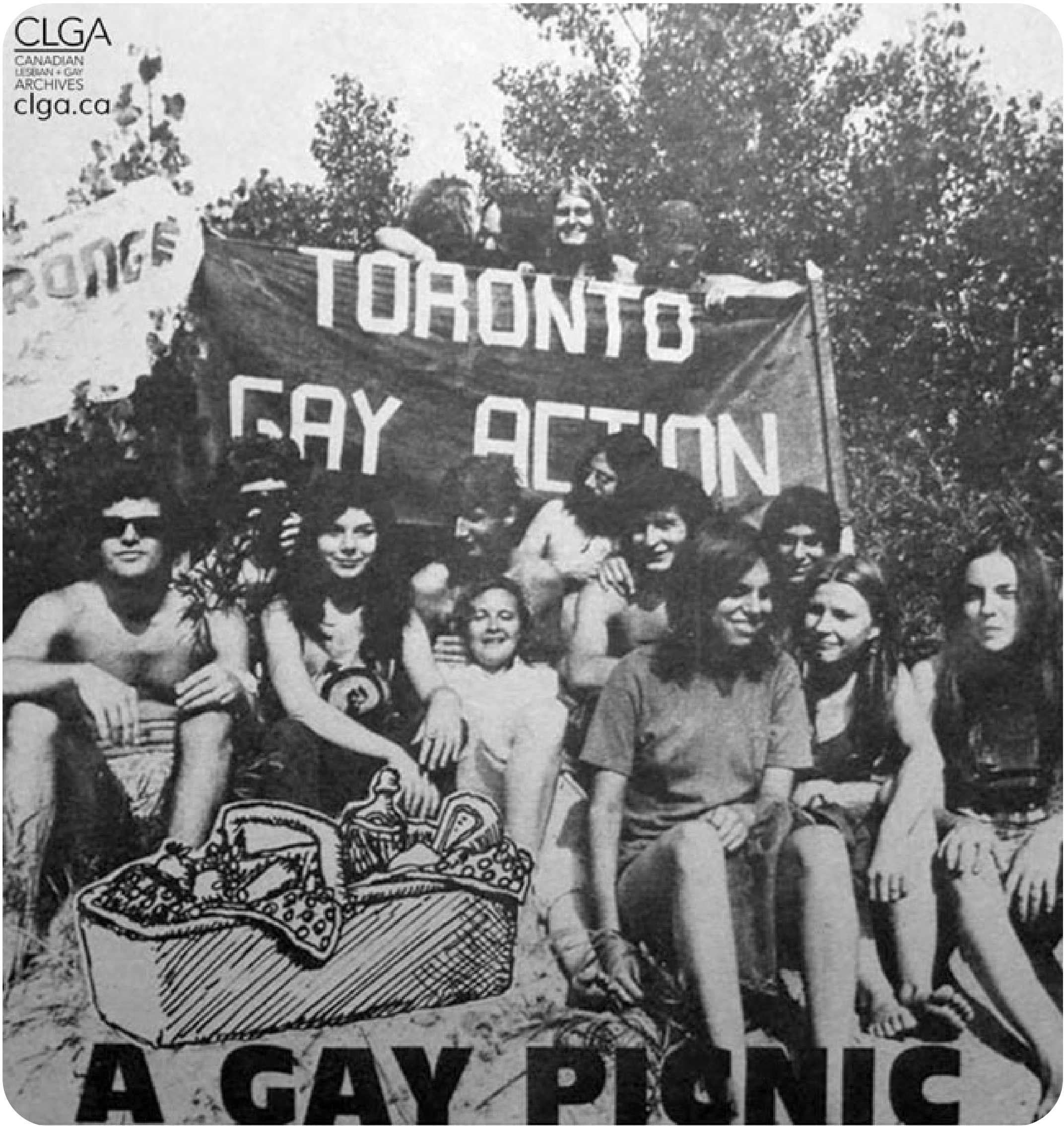


Celebrating 2SLGBTQ+ Significance

DRAFT Tasks to Implementation

The following tasks have been identified to support the implementation of the master plan but are subject to change. Timing has been proposed to assist with planning but may change based on ongoing engagement, budget allocation, detail design processes, changes to site conditions, and/or opportunities to align with other initiatives.

PROJECT/INITIATIVE	UNDERWAY/ IMMEDIATE	SHORT TERM	MID-TERM	LONG TERM
Establish Hanlan's Working Group				
▶ Establish terms of reference and form a working group to advise on Hanlan's Point improvements.				
Restore and Protect Hanlan's Point Beach Ecology				
▶ Identify opportunities for naturalization and habitat restoration in park areas near Hanlan's Point.				
▶ Restore and enhance Hanlan's Beach and dune habitats.				
▶ Develop terms of reference and undertake Hanlan's Beach EA.				
▶ Implement Hanlan's Beach EA recommendations.				
Enhance Community Safety at Hanlan's				
▶ Develop Community Safety Strategy specific to Hanlan's Point communities and spaces including a Hanlan's specific Charter.				
▶ Develop a Hanlan's specific Island ambassadors program to support community safety and well-being.				
▶ Assess beach access and pathways for habitat impacts and safety.				
Reveal Cultural Heritage and Significance of Hanlan's Point				
▶ Install Progress Pride Flag at Hanlan's Beach.				
▶ Co-design and implement cultural interpretive elements honouring the pride picnic and other events, people, or spaces as identified, including the significance for Canada's gay rights movements.				
▶ Undertake Hanlan's Cultural Heritage Study.				
Enhance Hanlan's Beach Amenities				
▶ Expand Clothing Optional Beach.				
▶ Assess facility and service needs for Hanlan's Beach users.				
▶ Explore improvements to beach amenities.				



Tell Us What You Think

DRAFT Priorities Feedback

The following 44 Projects or Initiatives have been identified to support the implementation of the master plan. The project/initiatives have been arranged under the goal they most support. More information can be found on panels throughout the Open House.

Which of the Master Plan priorities are most important to you?

Pick your top 3 most important priority project/initiatives and put a green dot next to them.

Revealing an Indigenous Place

Designate and Support Ceremonial Use	
Simplify Permit Procedures	
Explore Co-operative Management Protocols	
Identify Place-Naming Opportunities and Protocols	
Create Gateway Markers at Landings	
Co-develop Knowledge Sharing Protocols	
Create a Cultural Narrative Trail	
Develop Community Gathering Program at Olympic Island	

Enhancing Visitor Experience

Upgrade Park Visitor Services	
Celebrate Island Character	
Develop Island Ambassador Program	
Revitalize Ferry Landings	
Expand Four-Season Park Uses	
Coordinate Island Communications	
Create an Island Welcome Centre	
Enhance Park Facilities and Infrastructure	
Expand Food and Beverage Options	
Expand Rental Offerings	

Improving Access and Connection

Enhance Park Wayfinding	
Develop Coordinated Movement Strategy for the Island	
Expand Cycling Infrastructure	
Improve Water-based Transportation	
Enhance Pedestrian Access and Connectivity	
Develop Island-Wide Transportation Service	

Elevating Equity and Belonging

Establish Island-wide Community Advisory Committee	
Enhance Park Accessibility Services	
Improve Pathway Accessibility	
Establish Community Safety Plan	
Enhance Affordability of Island Experiences	
Enhance Diversity in Island Interpretation	
Enhance Park-wide Accessible Movement	

Supporting the Natural Environment

Expand Habitat and Invasive Species Management	
Address Flood Mitigation Impacts	
Enhance Nature-Based Education and Advocacy	
Manage Natural Area Access	
Develop Island Charter	
Create Integrated Park Management Plan	
Develop Transparent Monitoring and Public Reporting Protocols	
Undertake Park-wide Facility and Resource Improvements	

Celebrating 2SLGBTQ+ Significance

Establish Hanlan's Working Group	
Restore and Protect Hanlan's Point Beach Ecology	
Enhance Community Safety at Hanlan's	
Reveal Cultural Heritage and Significance of Hanlan's Point	
Enhance Hanlan's Beach Amenities	