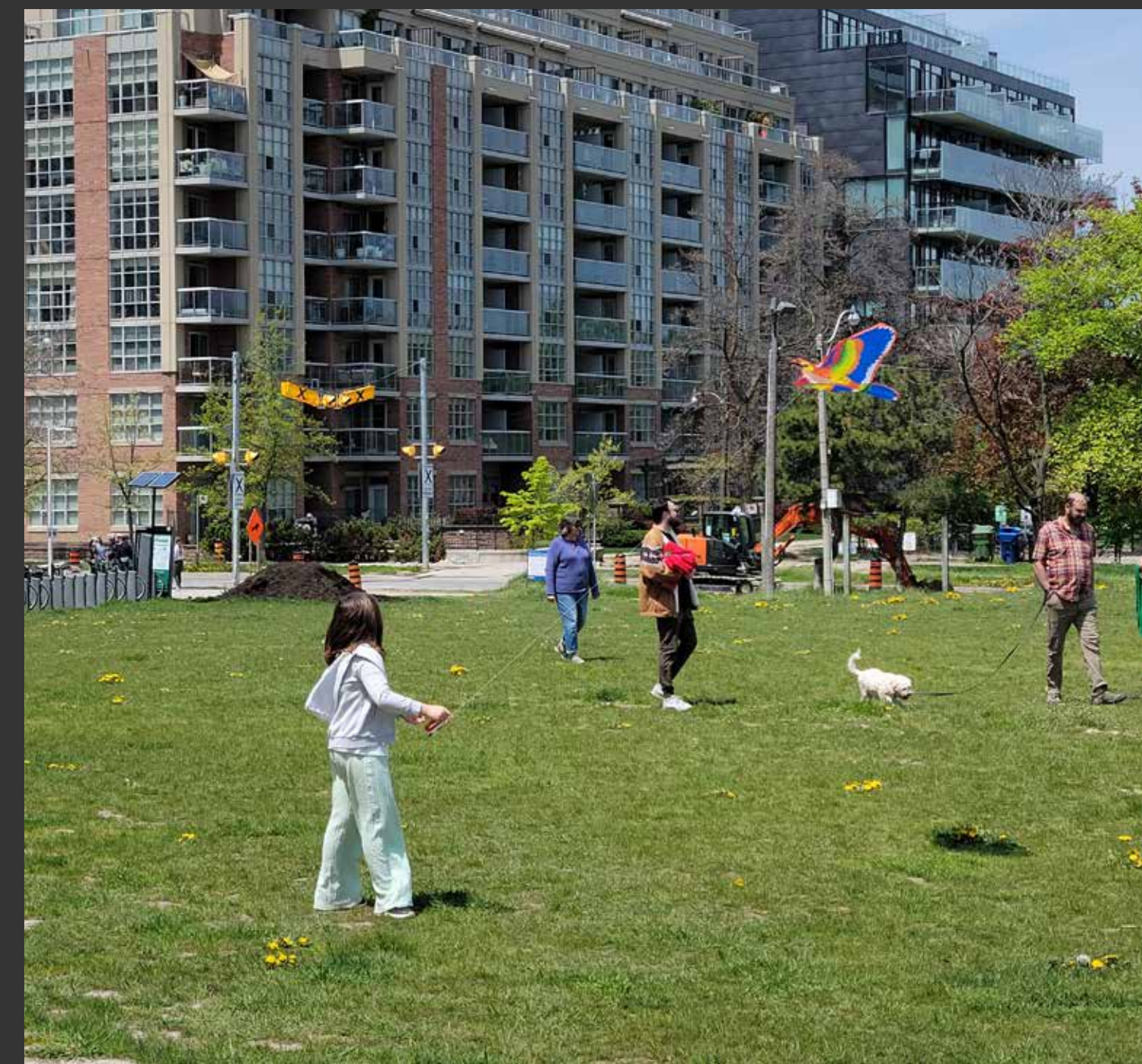


# New Parks at 10 Ordinance St. & 801 Wellington St. W.

## Indigenous Advisory Circle Meeting #2

March 26, 2024





**We would like to begin by honouring the land that we are on. We acknowledge the land we are meeting on is the traditional territory of many nations including the Mississaugas of the Credit, the Anishnabeg, the Chippewa, the Haudenosaunee and the Wendat peoples and is now home to many diverse First Nations, Inuit and Métis peoples. We also acknowledge that Toronto is covered by Treaty 13 with the Mississaugas of the Credit.**

# Agenda

<b>6:00 pm</b>	Welcome and Online Meeting Instructions
<b>6:10 pm</b>	Meeting Purpose and Introductions
<b>6:30 pm</b>	What We've Heard
<b>6:40 pm</b>	How Have We Taken Action?
<b>7:00 pm</b>	Discussion
<b>8:00 pm</b>	Adjourn

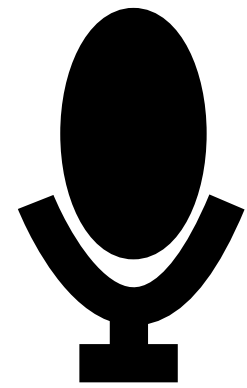
# Tips for Participating in This Virtual Meeting



Please **mute** your microphone during the meeting.

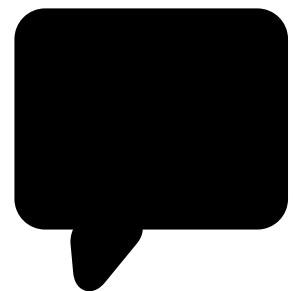


The use of cameras is encouraged for this meeting.



Please **raise your hand and unmute** to speak.

or



Use the **chat** feature to ask written questions at any time.



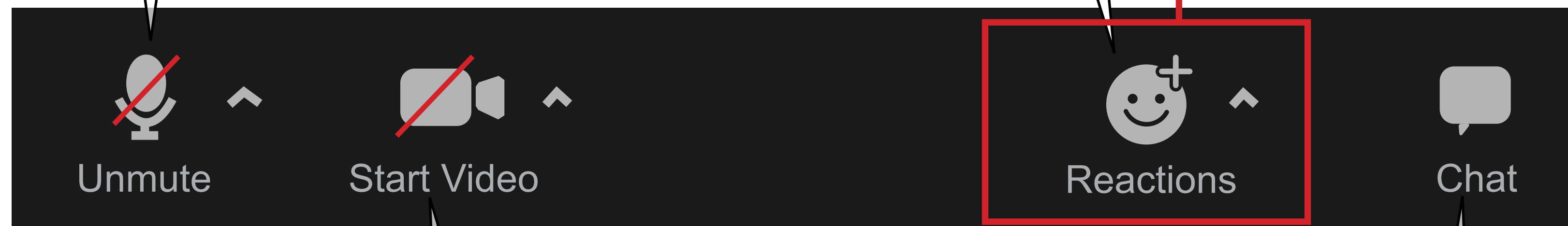
**Computer audio issues?** Use your cell-phone for audio by calling **647-558-0588** and enter **meeting ID: 634 1453 2963** and **passcode: 911801**.

# How to Participate: Zoom Meeting Controls

If you are joining the meeting by the **desktop or mobile Zoom app**, a toolbar with these buttons appears at the bottom of your screen:

You can **mute and unmute** your microphone by clicking this button. Your microphone should be muted during the presentation.

To raise your hand to speak, click or tap the "**Reactions**" button then click or tap the "**Raise Hand**" icon.



You can turn your **video on or off** by clicking this button.

If you have a comment or question during the meeting at any time, you may type it into the **chat**.

# How to Participate: Zoom Meeting Controls

**Call-in participants** can raise their hand and unmute or mute themselves with these keys:



**\*9**

**Raise/Lower  
Hand**

---

To raise your hand, press \*9 on your telephone's keypad. Press \*9 again to lower your hand.

Note: You may hear an audio prompt if the host lowers your hand on your behalf.

**\*6**

**Mute/Unmute**

You can unmute yourself by pressing \*6 on your phone's keypad. Press \*6 again to mute when you are done speaking.

Note: You may hear an audio prompt if the host mutes you on your behalf.

# Meeting Purpose

## The purpose of this meeting is to:

- Review what we heard at the last IAC Meeting and how its impacted design direction.
- Present design proposals for Indigenous Placekeeping in the parks.
- Discuss and gather feedback about the proposed Indigenous Placekeeping in the parks.

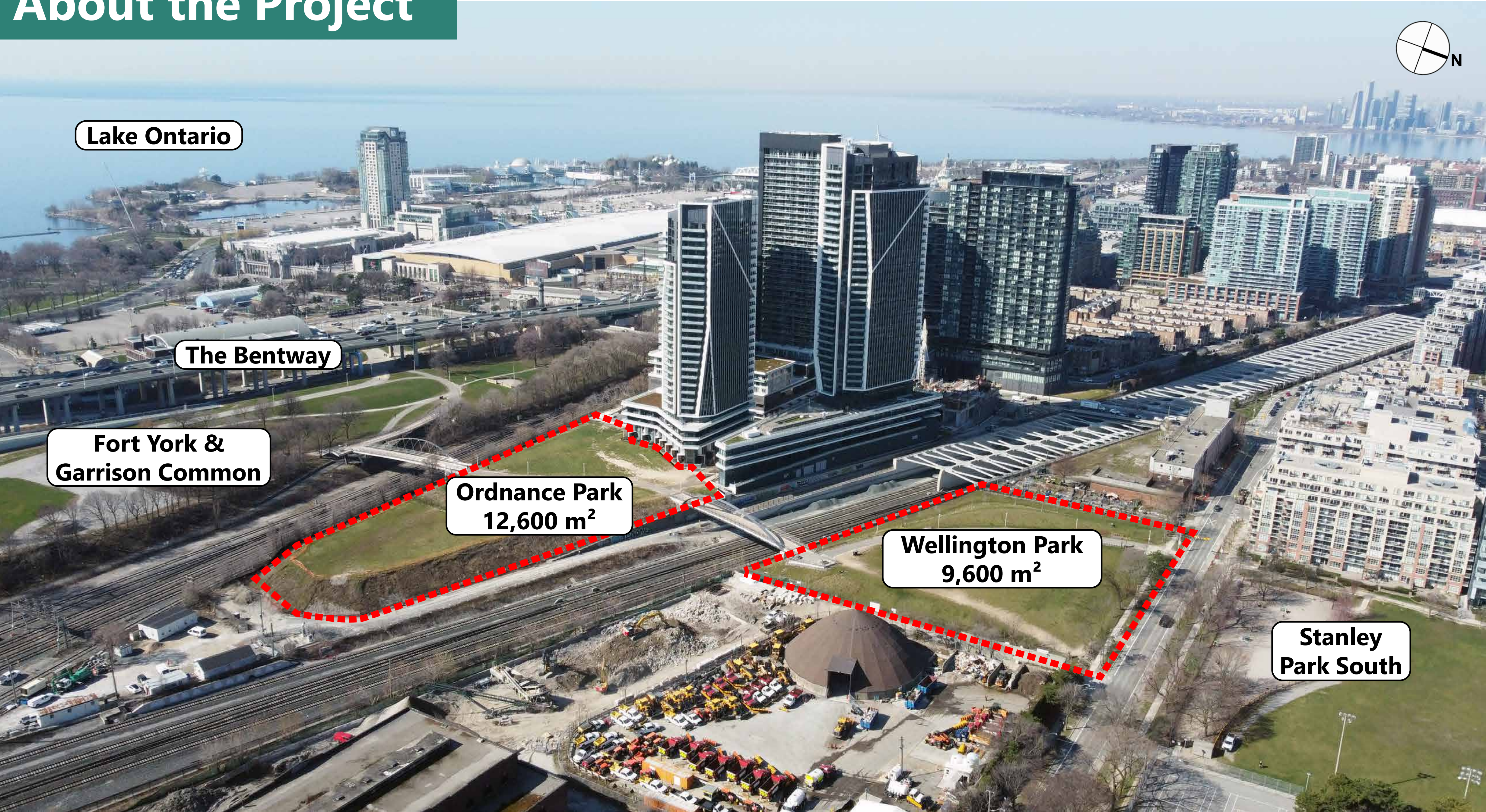


# Introductions

Share something about yourself!



# About the Project



Lake Ontario

The Bentway

Fort York &  
Garrison Common

Ordnance Park  
12,600 m<sup>2</sup>

Wellington Park  
9,600 m<sup>2</sup>

Stanley  
Park South



# Project Timeline

<b>Phase 1:</b> Background Docs Review	<b>Phase 2:</b> Building a Vision	<b>Phase 3a:</b> Exploring Design Options	<b>Phase 3b:</b> Setting a Direction	<b>Phase 4:</b> Detailed Design	<b>Phase 5:</b> Contract Documentation	<b>Phase 6:</b> Construction
<b>April-May 2023</b> <b>Inventory and assessment of existing site conditions</b> including: park features, pathways, structures, furniture, services, sightlines, views, safety issues, lighting, trees/ planting, etc.	<b>May-June 2023</b> To develop a <b>vision, design principles and big moves</b> , based on background review, inventory and analysis, collaboration with stakeholders and public engagement.	<b>July-Sept 2023</b> Develop <b>concept designs</b> in collaboration with stakeholders based on feedback received through previous engagement processes, including pre-engagement and Phase 2 Vision, Design Principles and Big Moves.	<b>Sept 2023-Mar 2024</b> After additional consultation and engagement is completed, prepare a <b>preferred concept</b> design to address community needs and meet project objectives and maintenance requirements.	<b>Spring-Summer 2024</b> Prepare detailed design documents including drawings, specifications, detailed cost estimates and project schedules, based on the approved final concept design from the previous phase.	<b>Summer 2024 - Winter 2024</b> Prepare construction drawings and specifications for all site improvements to be undertaken, and construction phasing as needed to meet project budget and schedule.	<b>Through 2025</b> 

We  
are  
here

## Indigenous Advisory Circle Meeting #1

Members of the Indigenous Advisory Circle provided feedback about the draft vision and concept design, particularly discussing opportunities for meaningful Indigenous Placekeeping in the new Ordnance and Wellington parks. The following are comments and concerns sorted by theme:

- **Placemaking/Placekeeping** – Incorporate native plants and trees with their Anishinaabe names and create spaces for potential gatherings such as medicine gardens with accompanying informative signage about Indigenous practices.
- **Ceremonial Areas** – Clearly mark ceremonial areas to prevent misuse, and ensure proper maintenance, accessibility, and the safety of Indigenous groups. Consider using natural elements instead of concrete.
- **Landscape Design Using Vegetation** – Source plants such as dandelions and cattails from Indigenous growers to support the urban ecosystem and increase the biodiversity of the parks.
- **Inclusivity of Many & Different Indigenous Nations** – Implement park elements to connect diverse groups.
- **Public Art** – Incorporate Indigenous storytelling through artistic mediums to add vibrancy to the parks, particularly during the winter season.



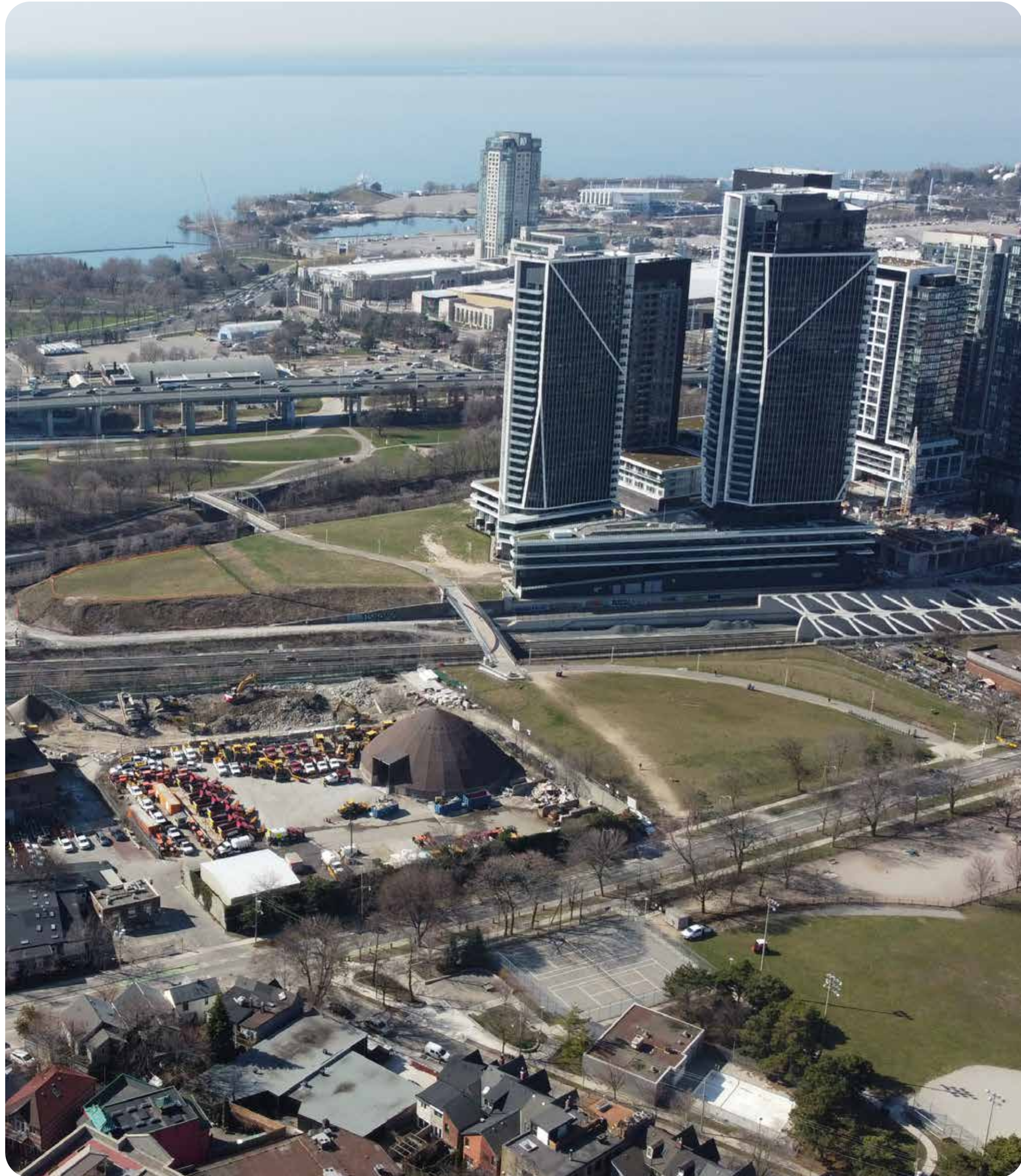


Landscape and  
Placekeeping

**How Have We  
Taken Action?**



# Vision



Ordinance and Wellington parks will provide a unique urban green space with spectacular views of the City skyline.

The parks will become an important green link between adjacent communities and to the broader open space network, offering a balance of green, ecological design; restful open spaces; and the creation of a social and playful public realm that will bring Indigenous histories and futures into focus.



# Design Principles

## The design of the parks will:



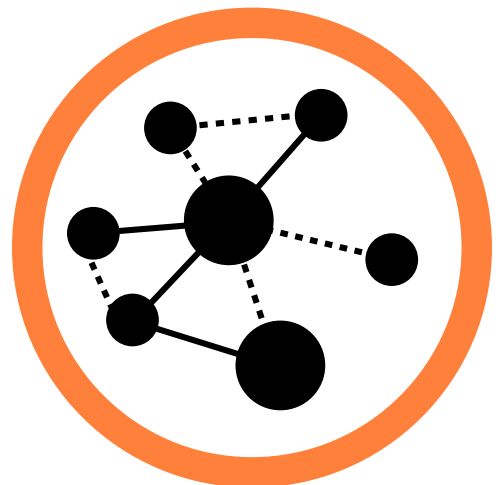
1. Establish a **Distinct Identity** for the Parks



2. Protect and Enhance **Key Views**



3. Strengthen Site **Topography and Landform**



4. Improve **Connections** in the Parks and to the Community



5. Enhance **Site Ecology**, reflecting **Indigenous Ecological Knowledge**



6. Create **Safe and Inclusive** Parks for All Ages and All Abilities



7. Contribute to Public Health through **Sustainable and Resilient** Design



8. Reflect the **Natural Heritage** of the Site and Integrate **Indigenous Culture, Languages and Art**



# Support Indigenous Placekeeping

## Placekeeping and Gathering Spaces

The eastern tip of the Ordnance Park peninsula is a unique place and is proposed as the location for an Indigenous gathering circle and potential fire pit.

- It is a place of prominence, with unobstructed views to the east and to the rising sun and moon.
- A quiet location, away from the main activities of the park, with good access and visibility for safety.
- Sheltered from northwest winds by the upper plateau.
- A well-defined space. Signs can be placed at the approaches to indicate when ceremony is in progress.

*\*The potential fire pit is subject to further City of Toronto approval.*





# Support Indigenous Placekeeping

## Fire Pit and Spaces for Indigenous Gathering





# Support Indigenous Arts and Culture

## Sharing Indigenous Teachings in Ordnance Park

Through the creation of murals, sculptures, or art, Indigenous teachings could be shared throughout the park.

Examples could be teachings about Lake Ontario, the Great Flood, the Council Fire Belt, the Loon and the Crane, or others. Similarly star teachings could be included. Potential locations are:

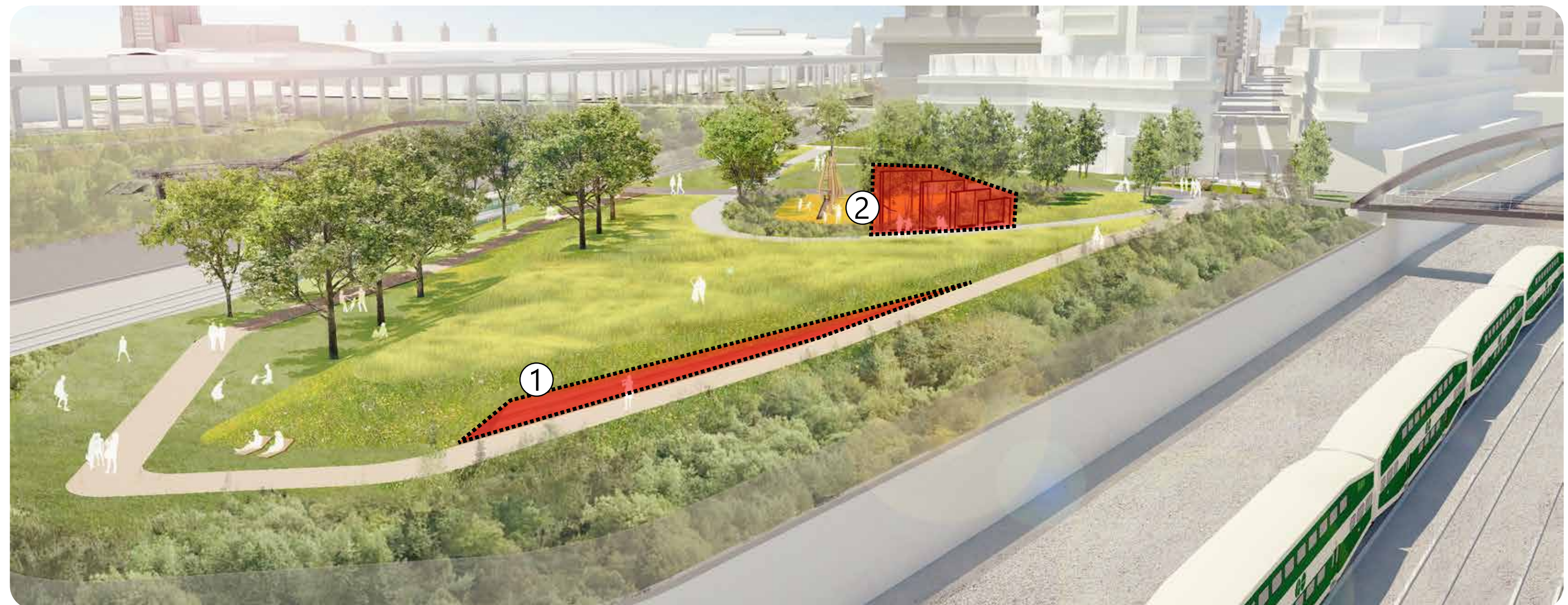
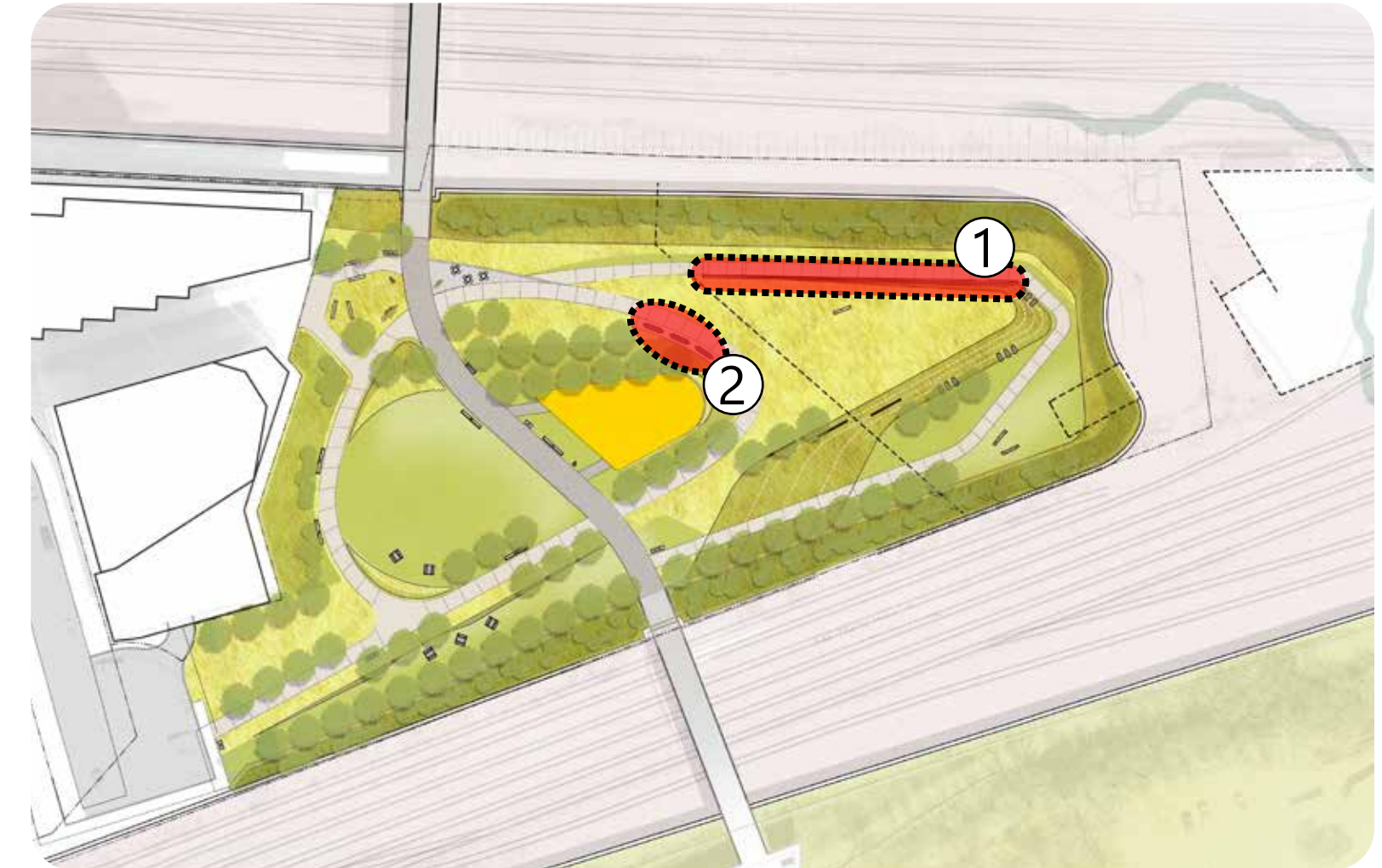
### ① The East Peninsula Retaining Wall

- Space for a low mural or relief sculpture

### ② Lookout Swings

- Opportunities to include sculptural elements, textures and patterns and light and shadow effects.

*Selected features will be designed in collaboration with the City and our Indigenous Design Advisors.*





# Support Indigenous Arts and Culture

## Sharing Indigenous Teachings in Wellington Park

The Wellington Plaza retaining wall has excellent visibility from the street and as such provides a great opportunity to welcome visitors to the park with an Indigenous story/teaching element.

### ① Wellington Plaza Retaining Wall

- Similar to that proposed in the previous slide, elements could include Treaty Belts, Traditional Teachings, or cultural markers.



*Selected features will be designed in collaboration with the City and our Indigenous Design Advisors.*



# Support Indigenous Arts and Culture

## Indigenous Teachings Through Artistic Mediums



The Sister Murals, Assiniboine Park, Winnipeg



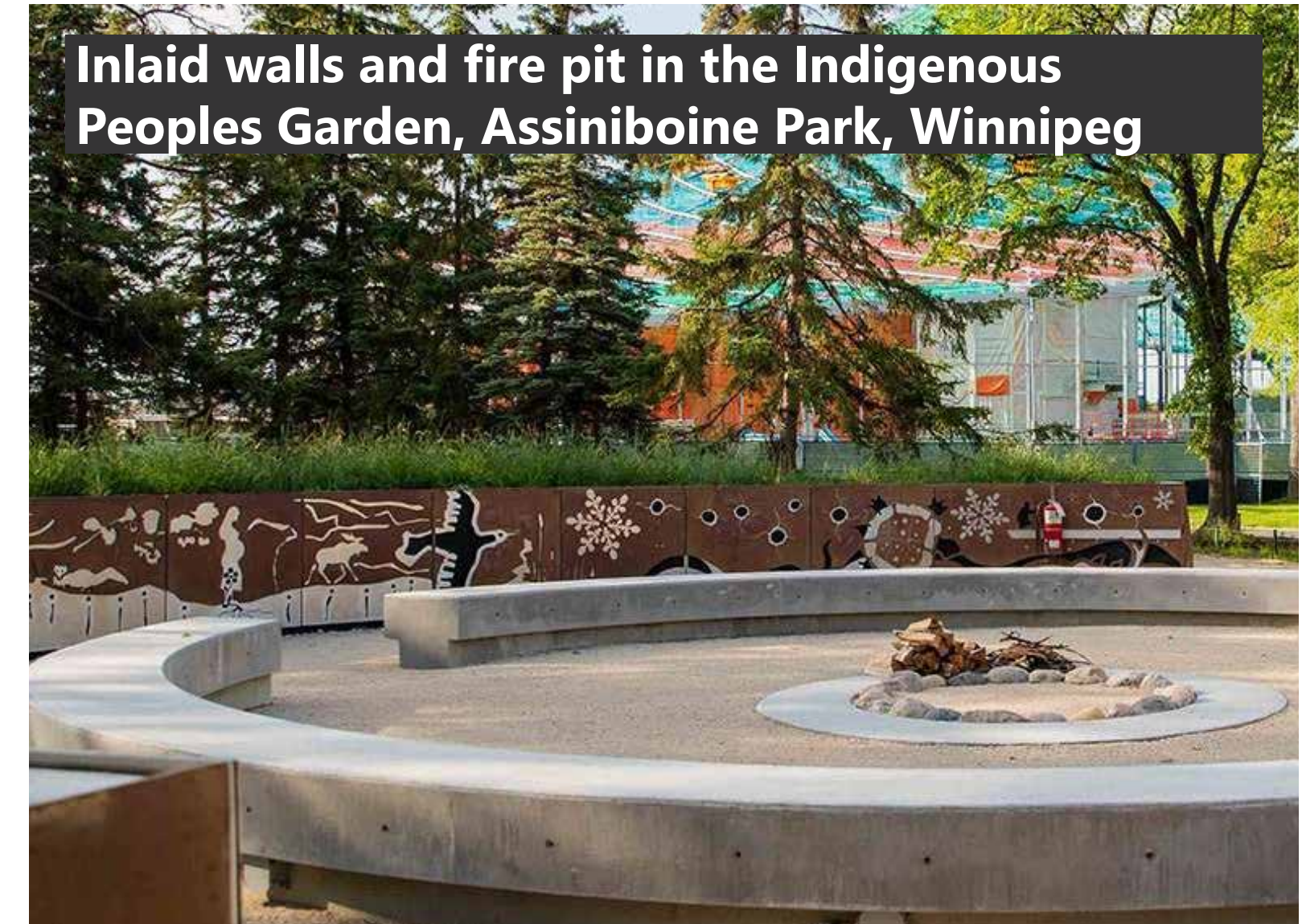
Moccasin Identifier Carving, Trillium Park



Indigenous Cultural Markers, Brook McIlroy, Humber College,



Mural at Spadina and Dupont, Phil Cote representing Anishinaabe, Wendat, Cree, and Haudenosaunee Images



Inlaid walls and fire pit in the Indigenous Peoples Garden, Assiniboine Park, Winnipeg



Constellations and Star Teachings at Evergreen Brick Works, Trophic Design



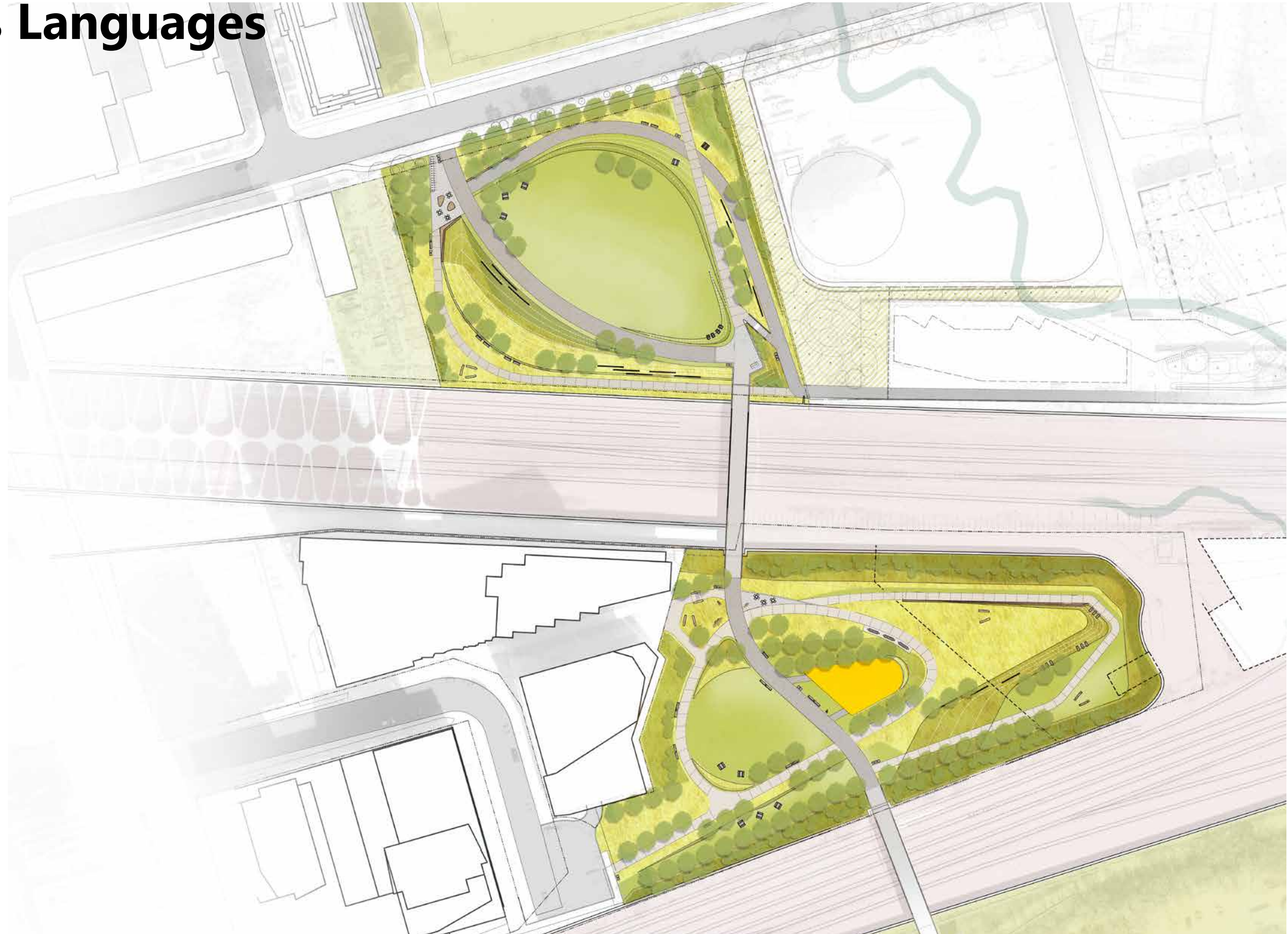
# Support the Revitalization of Indigenous Languages

## Revitalization of Indigenous Languages

Indigenous languages should be visible in the parks and should reflect the culture of the traditional rights holders in this place.

- Identify plants and ecologies present in the parks in Anishinaabemowin.
- Introduce interpretive signs translated into Anishinaabemowin for Indigenous teachings and history.
- Include Indigenous languages where opportunities allow.
- Explore opportunities to include the Moccasin Identifier project into the parks.

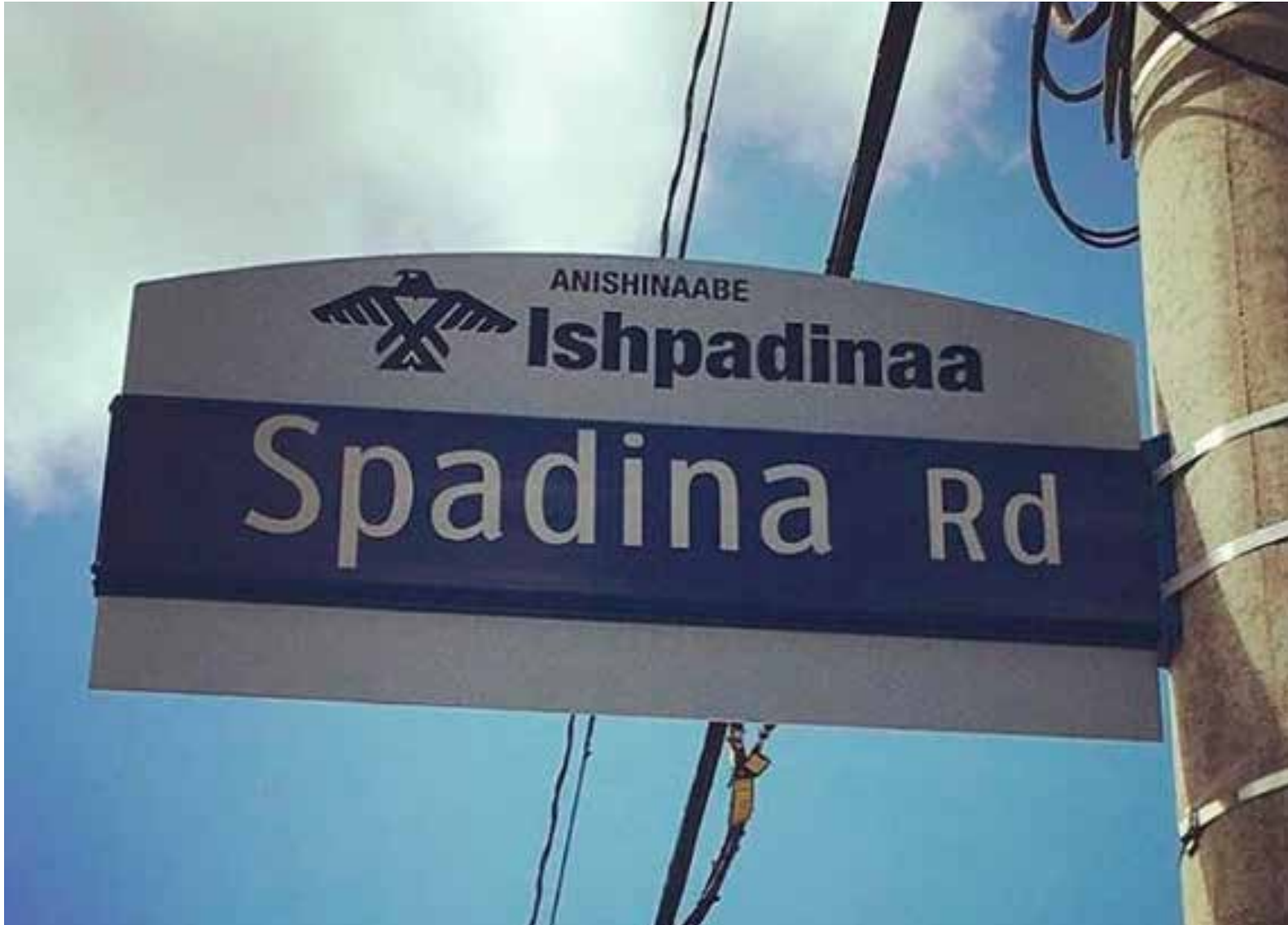
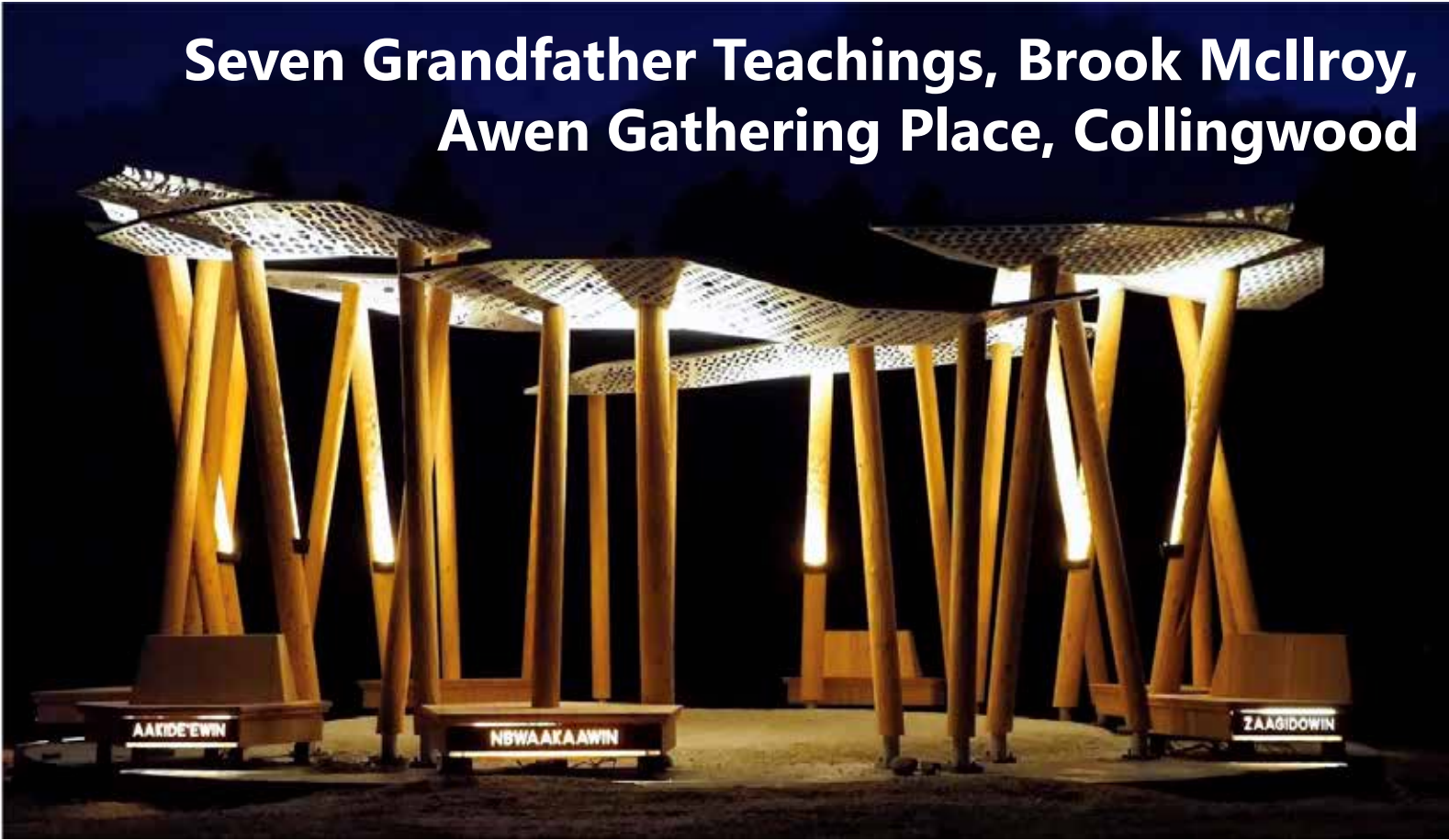
*Selected features will be designed in collaboration with the City and our Indigenous Design Advisors.*





# Support the Revitalization of Indigenous Languages

## Revitalization of Indigenous Languages





# Support Indigenous Health and Wellbeing

## Indigenous Planting in Ordnance Park

Ordnance Park will feature a number of unique plant communities including:

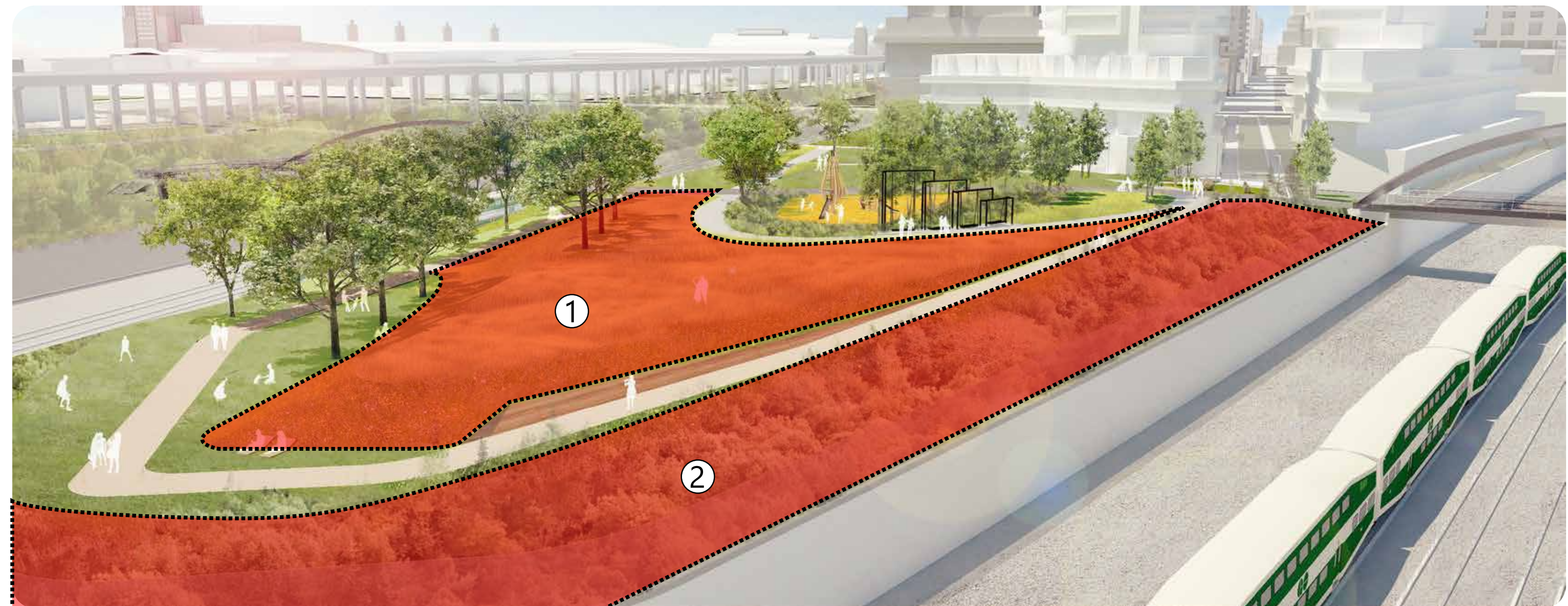
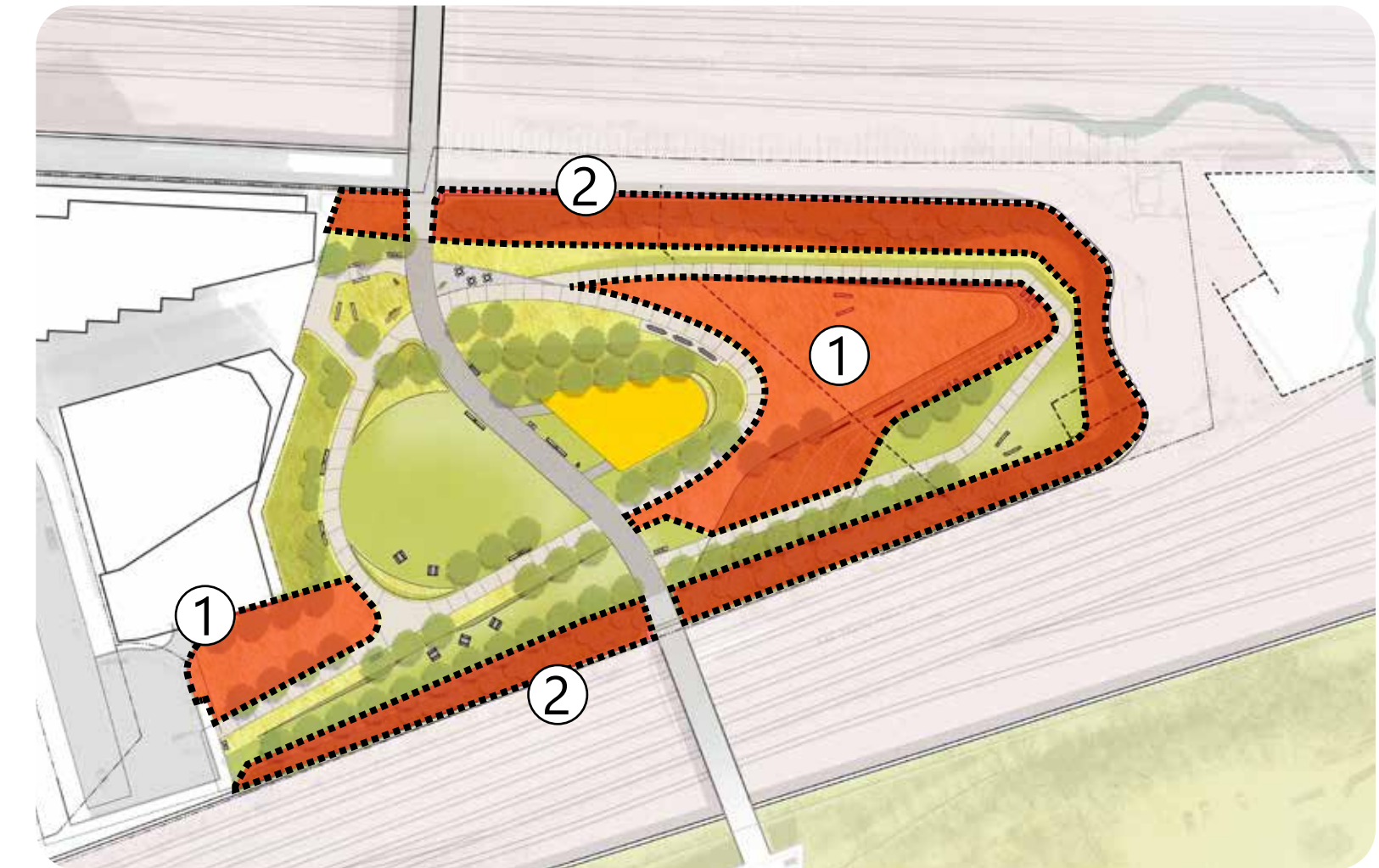
### ① **Dry Meadow / Grassland**

- The upper peninsula of Ordnance Park is an opportunity to introduce a native dry meadow or grassland to the parks.

### ② **Wildlife Habitat Planting**

- The sloped banks of Ordnance Park are an opportunity to plant species that support wildlife with fruit bearing, shrubs, evergreens and other dense, low plants that can provide habitat and cover.

*A planting palette will be developed in collaboration with the City and our Indigenous Design Advisors.*





# Support Indigenous Health and Wellbeing

## Indigenous Planting in Wellington Park

Wellington Park will feature a number of unique plant communities including:

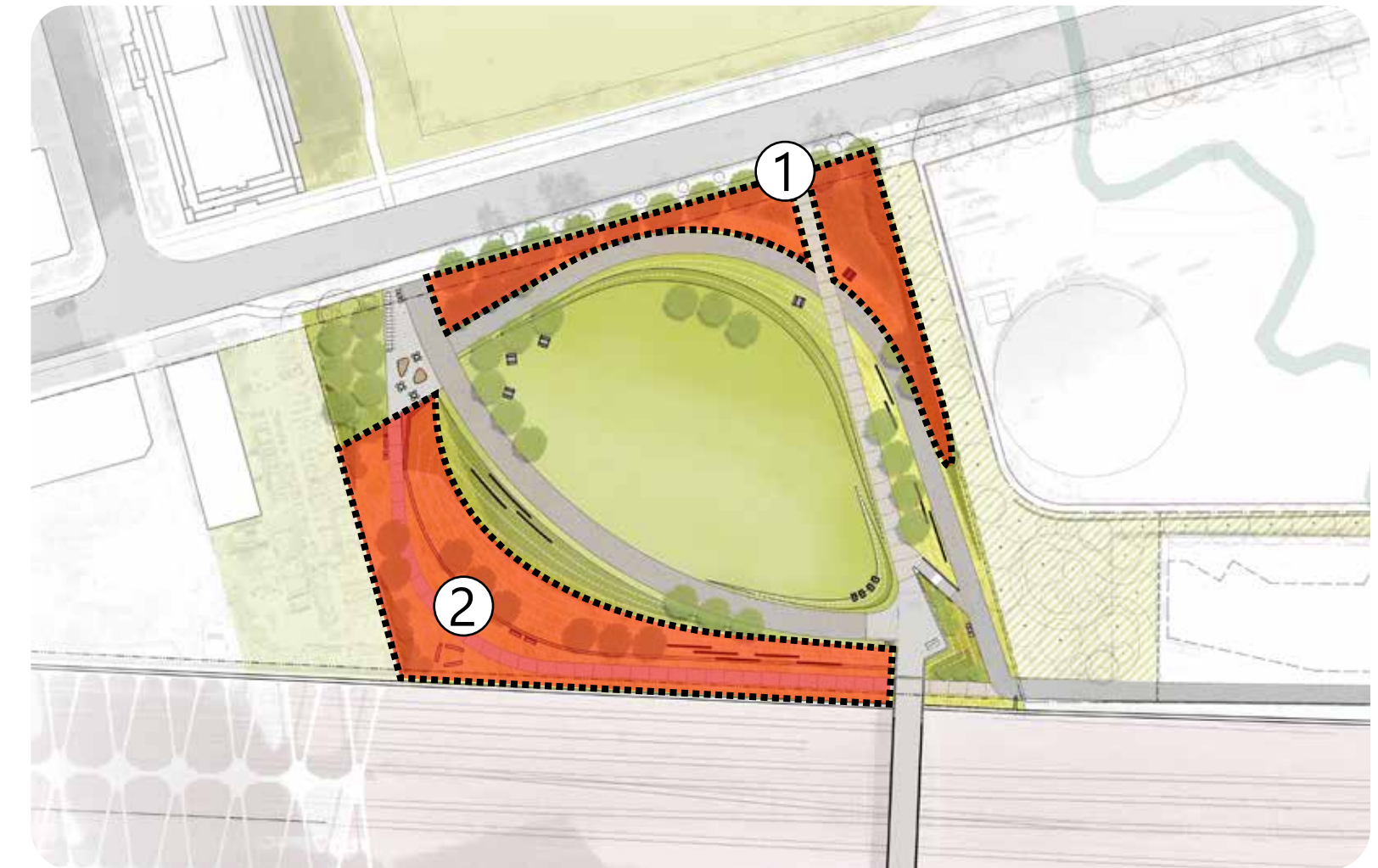
### ① Wet Meadows / Rain Gardens

- The northeast corner of Wellington Park is an opportunity to integrate wet meadow or rain garden plantings.
- A wet meadow feature can also be designed to function as green infrastructure to clean water flowing from the park.

### ② Pollinator Meadows

- The slopes and flat plain at the southern border of the park are an opportunity for a native pollinator meadow.

*A planting palette will be developed in collaboration with the City and our Indigenous Design Advisors.*





# Support Indigenous Health and Wellbeing

## Indigenous Planting

The planting palette for Ordnance and Wellington parks will draw on Indigenous knowledge to select plants that are hardy and self-sustaining.



Bee Balm / Bergamot  
(*Monarda didyma*)



Eastern White Cedar  
(*Thuja Occidentalis*)



Silver King and Silver Queen Wormwood "Sage"  
(*Artemisia ludoviciana*)



Shrubby St. John's Wort  
(*Hypericum prolificum*)



Little Bluestem Grass  
(*Schizachyrium scoparius*)



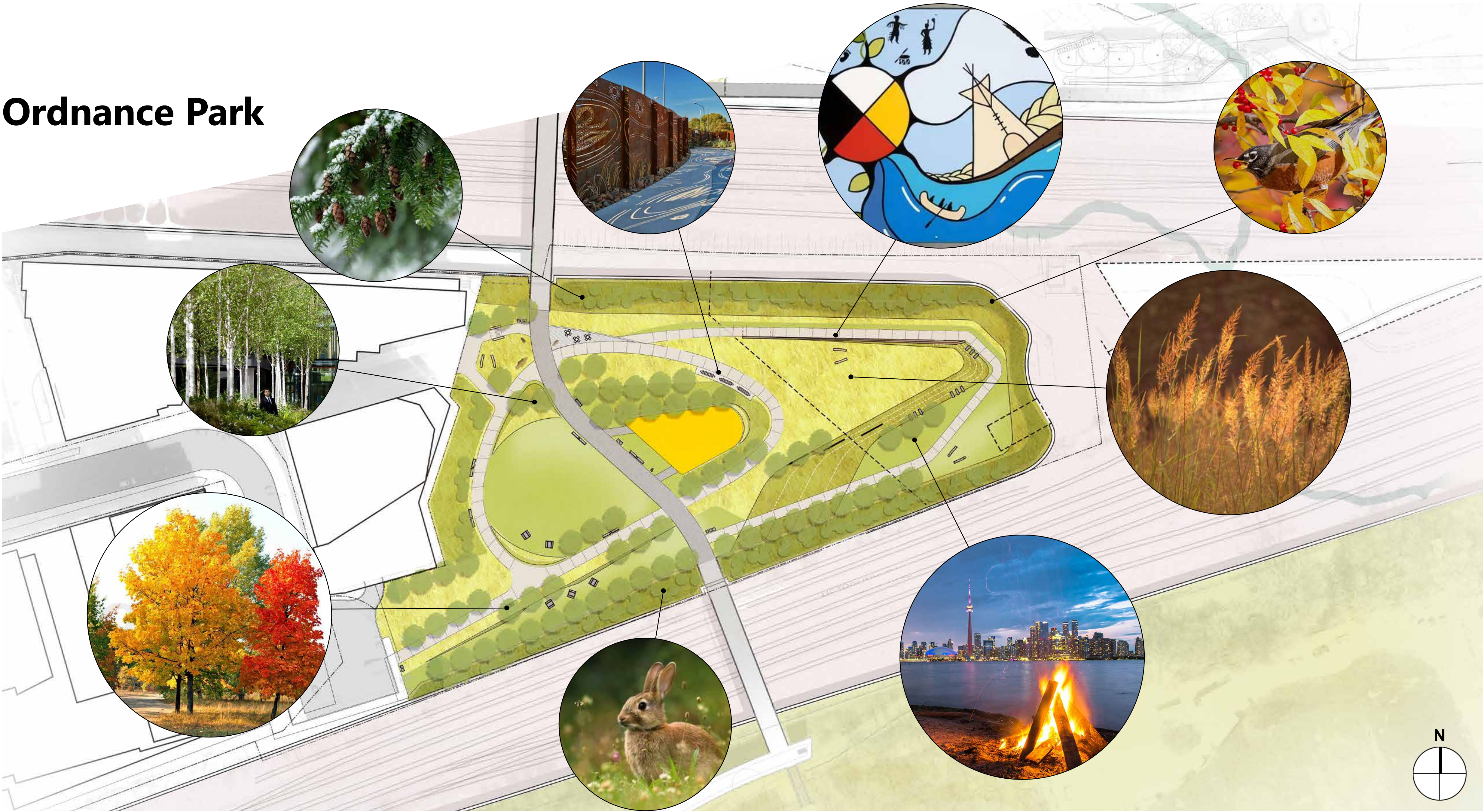
# Revised Concept

## Wellington Park





# Ordnance Park







# Discussion

What do you think about  
the proposals for Indigenous  
Placekeeping in the Parks?



# Next Steps

## The next steps in the project:

- The design team will make refinements to the concept plans based on the feedback heard today.
- **A Public Open House will be held on March 27, 2024**, along with an **online survey**, to gather feedback from the public on the preferred concept.
- DTAH will work with Trophic Design to ensure that Indigenous design elements are meaningfully integrated into the parks.
- Detailed design and technical review by City will be ongoing through 2024.
- There may be opportunities for further engagement through the detailed design process. Please contact William directly if you would be interested in being involved should the opportunity arise.
- **Start of Construction targeted for early 2025!**





A photograph of a field of white flowers in the foreground, with the Toronto skyline and the CN Tower visible in the background. The text is overlaid on the image.

**Miigwetch / Nia:weh / Marsee / Nakurmiik**  
**Thank you**