

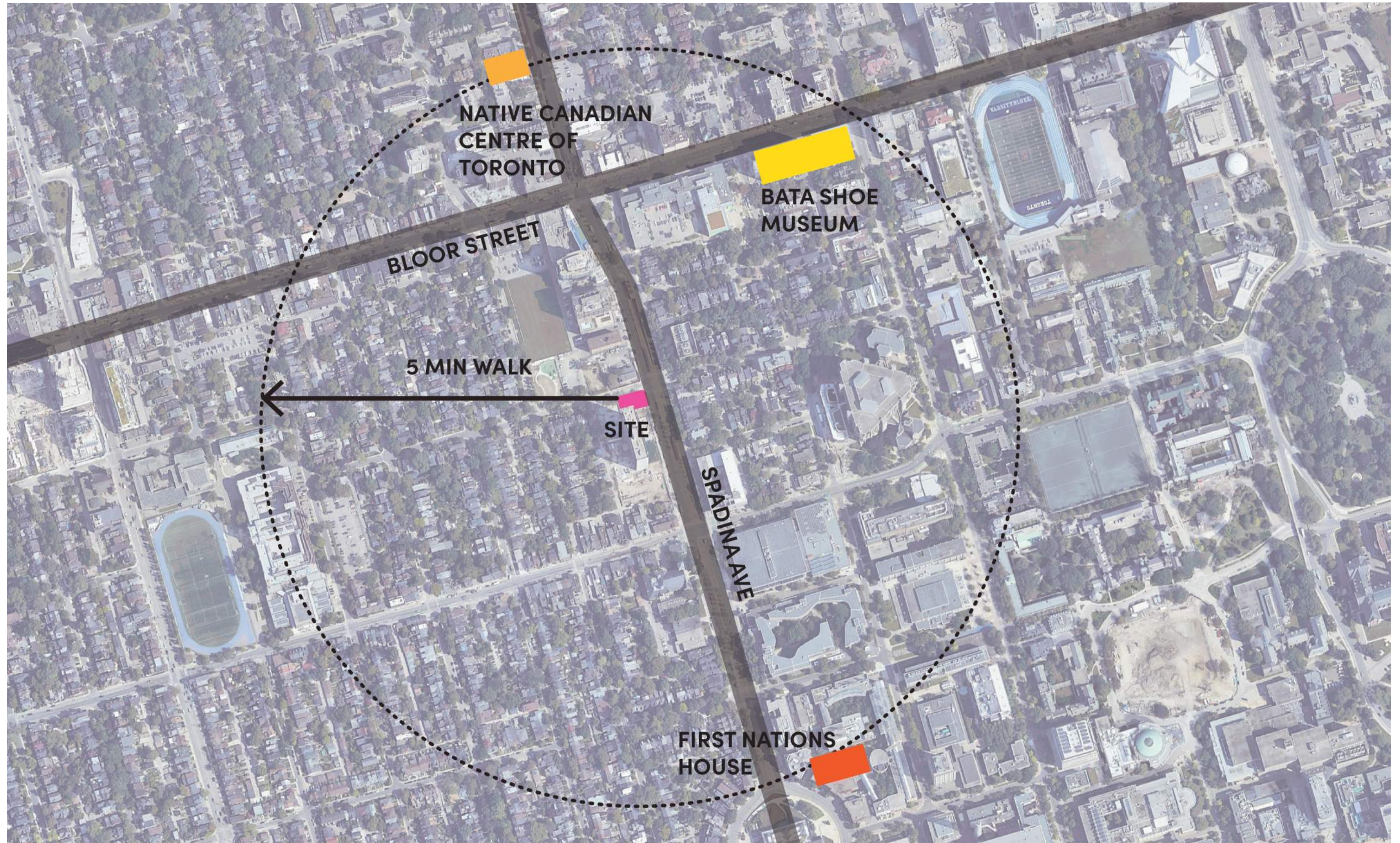
# 51 SUSSEX PARK

**CONTEXT**



# 51 SUSSEX PARK

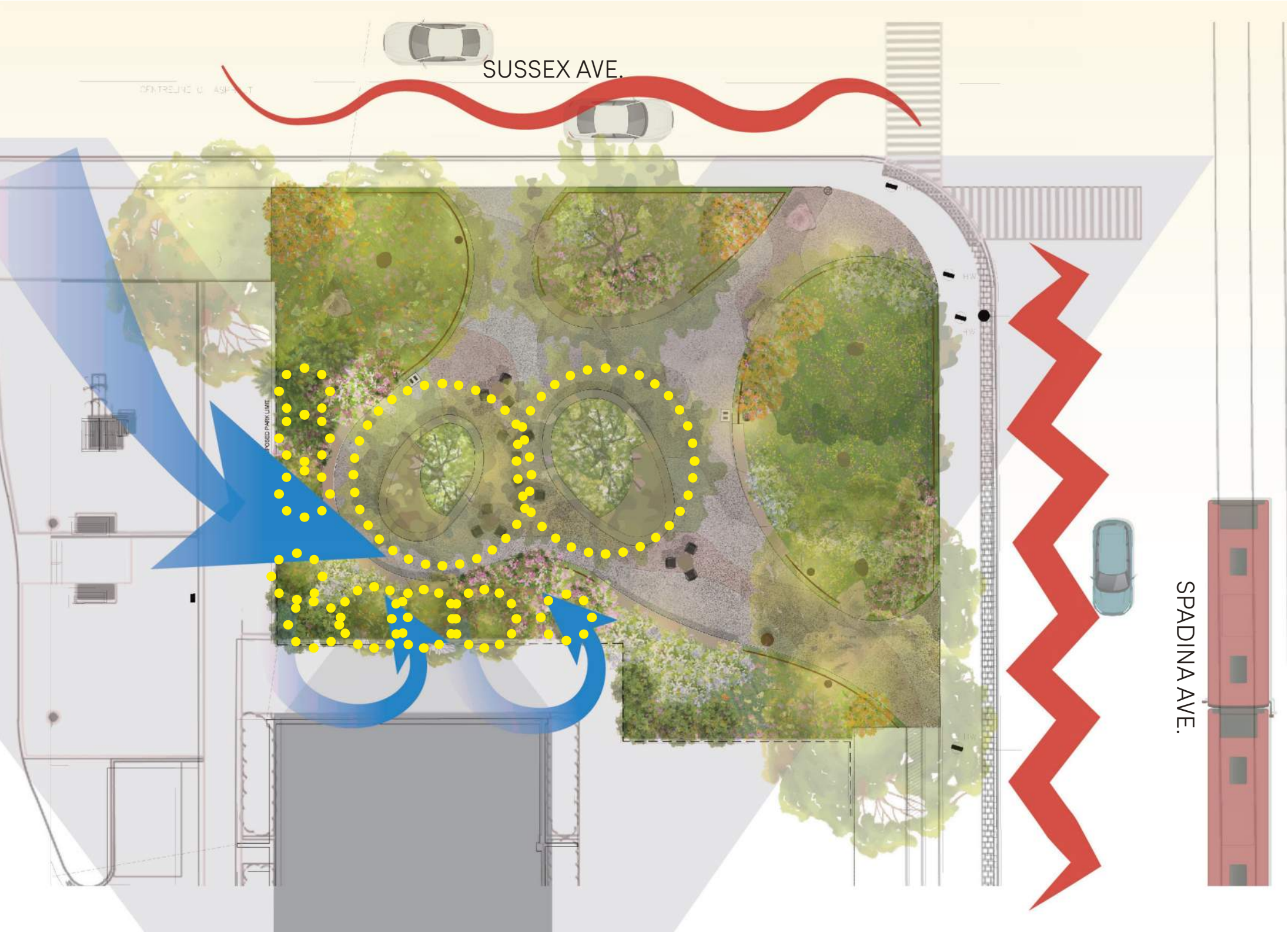
## CONTEXT





# 51 SUSSEX PARK

## ENVIRONMENT



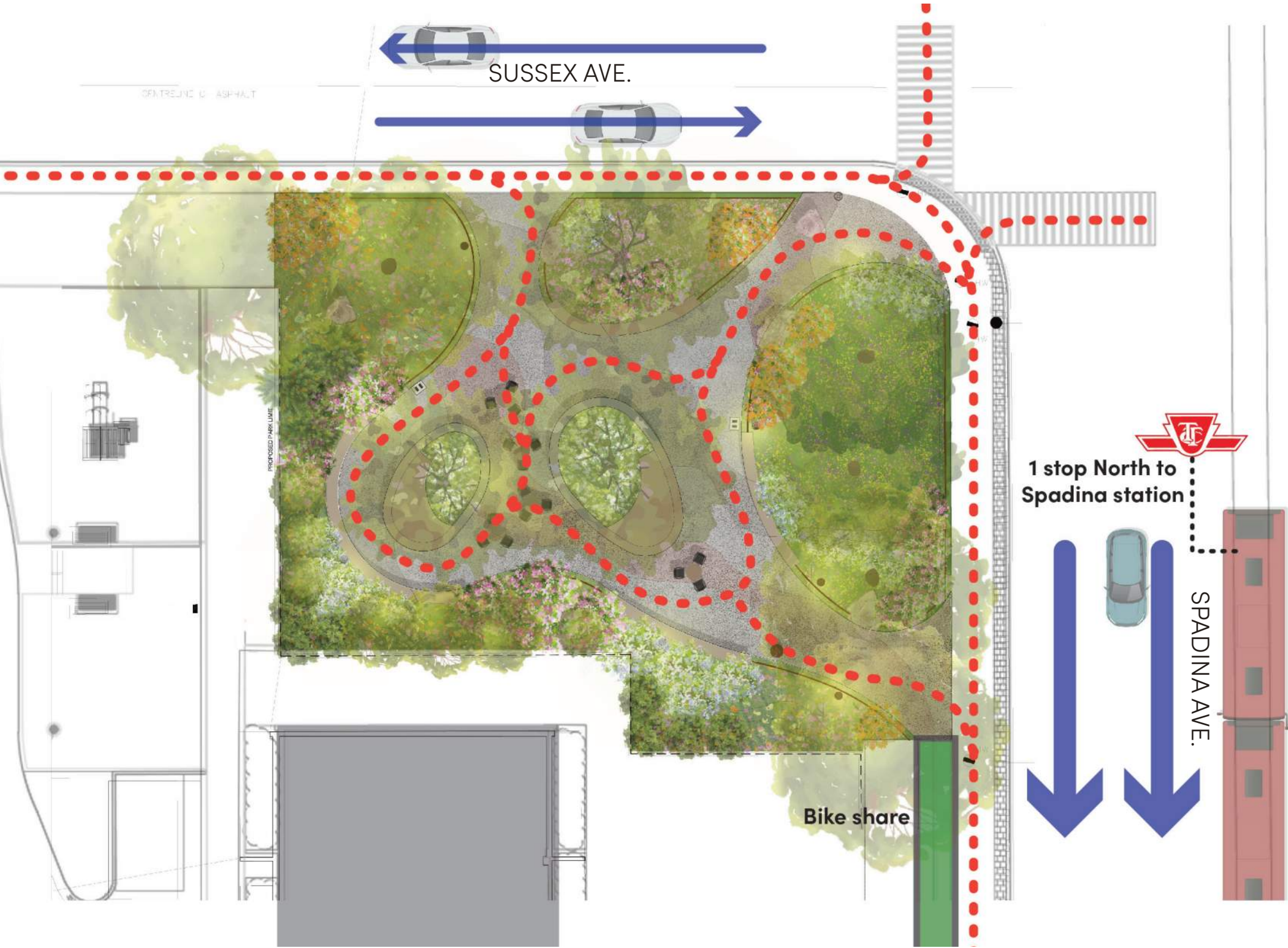
### LEGEND

- Residential traffic
- Heavy traffic
- Strong wind
- Wind off Building
- Wind mitigation



# 51 SUSSEX PARK

## ACCESS

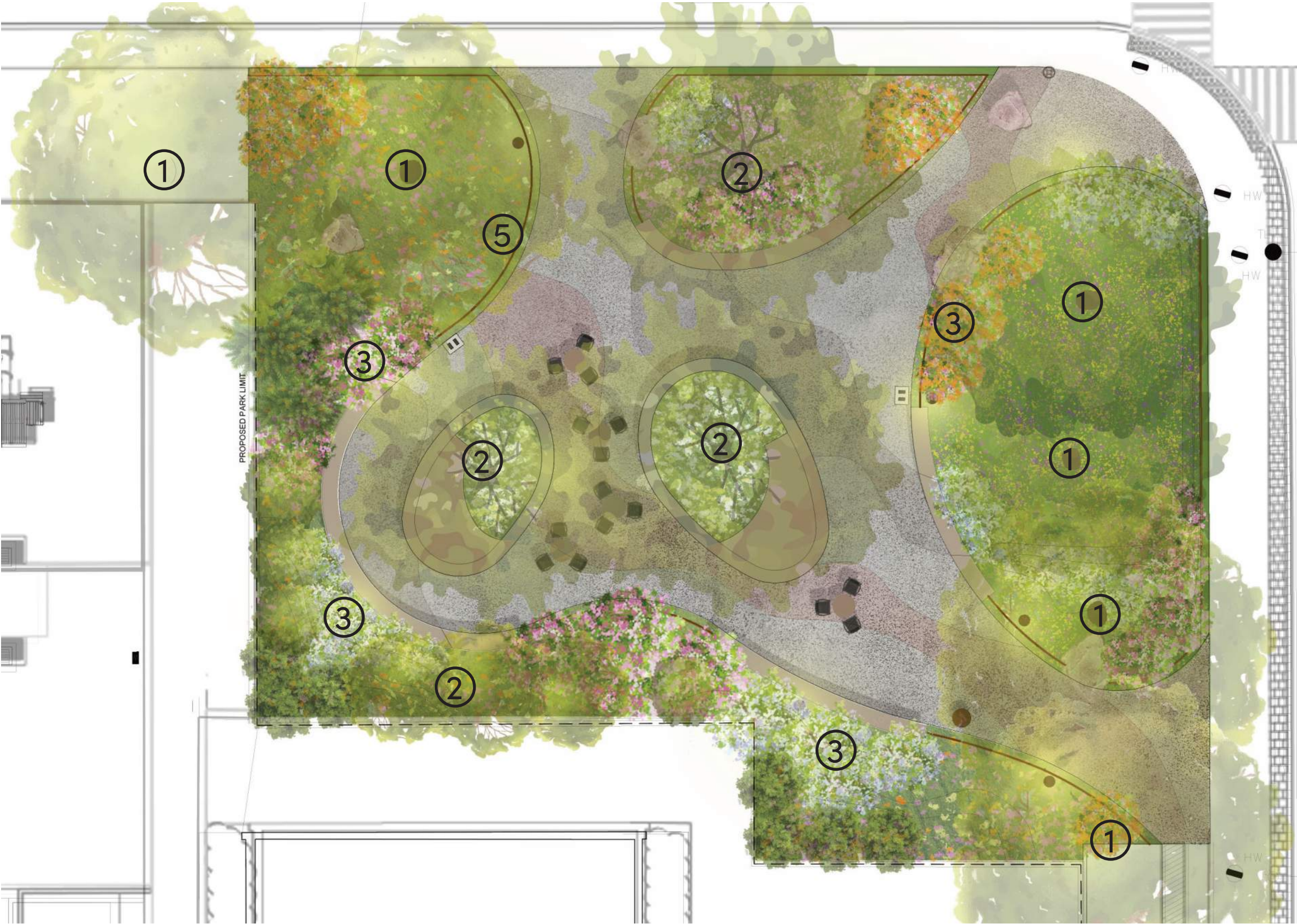


### LEGEND

- ..... Pedestrian access
- ➡ Heavy traffic
- ➡ Residential traffic
- Bike share



# 51 SUSSEX PARK



## LEGEND SOFTSCAPE

- 1. Trees
- 2. Wind Break Tree Planting
- 3. Native Plant Material Shrub Bed



# 51 SUSSEX PARK

## COMMUNITY GATHERING



### LEGEND HARDSCAPE

- 1. Permeable Paving
- 2. Wood Bench
- 3. Wood Deck
- 4. Table + Chairs
- 5. Waste Receptacle
- 6. Drinking Fountain
- 7. Boulders



# NORTH WEST ENTRANCE



buffalo



bear



black eyed susan



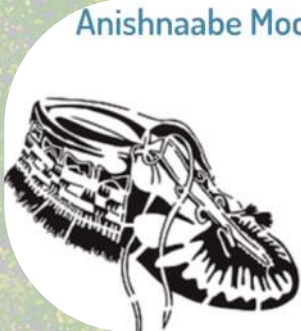
lupine



pearly everlasting



dogwood



Anishnaabe Mocassin

**Date:** 1700-1799  
**Culture:** Amerind, Woodland  
**Tribe:** Anishnaabe  
Research, Artist and Design by Philip Cote  
Anishnaabe live throughout Ontario today.





# NORTH EAST ENTRANCE



Wendat Mocassin



Date: 1830

Culture: Amerind, Woodland

Tribe: Huron

Research, Artist and Design by Philip Cote

Huron-Wendat live in Eastern Ontario and Quebec today.



bald eagle



smooth rose



new jersey tea



dogwood



vireo



black oak





# SOUTH EAST ENTRANCE



Seneca Mocassin



**Date:** 1850-1900

**Culture:** Amerind, Woodland

**Tribe:** Haudenosaunee

Research, Artist and Design by Philip Cote

Seneca live throughout the United States and Ontario today.



birch tree



cup flower



bergamont



deer



sage



low bush blueberry



sweet grass







NORTHWEST ENTRANCE FACING SOUTH





NORTHEAST ENTRANCE FACING SOUTH





SOUTHEAST ENTRANCE FACING NORTH





NORTHWEST CORNER FACING SOUTEAST





CENTRAL AREA FACING WEST



**THANK YOU!**