

## **Appendix A: Select Previous LRT Assessment Results Mapping**



**Stage 1 Archaeological Assessment**

**Transit Project Assessment Study  
Scarborough – Malvern Corridor,  
City of Toronto, Ontario**

Submitted to:

**IBI Group**

230 Richmond Street West  
Toronto, ON M5V 1V6  
Tel: 416-596-1930  
Fax: 416-596-0644

Prepared by:

**Archaeological Services Inc.**

528 Bathurst Street  
Toronto, Ontario M5S 2P9  
Tel.: 416-966-1069  
Fax: 416-966-9723  
Email: asitoronto@rogers.com  
Website: [www.iasi.to](http://www.iasi.to)

ASI File 08EA-103  
Archaeological Licence P057  
MCL PIF P057-569-2009

February 2009



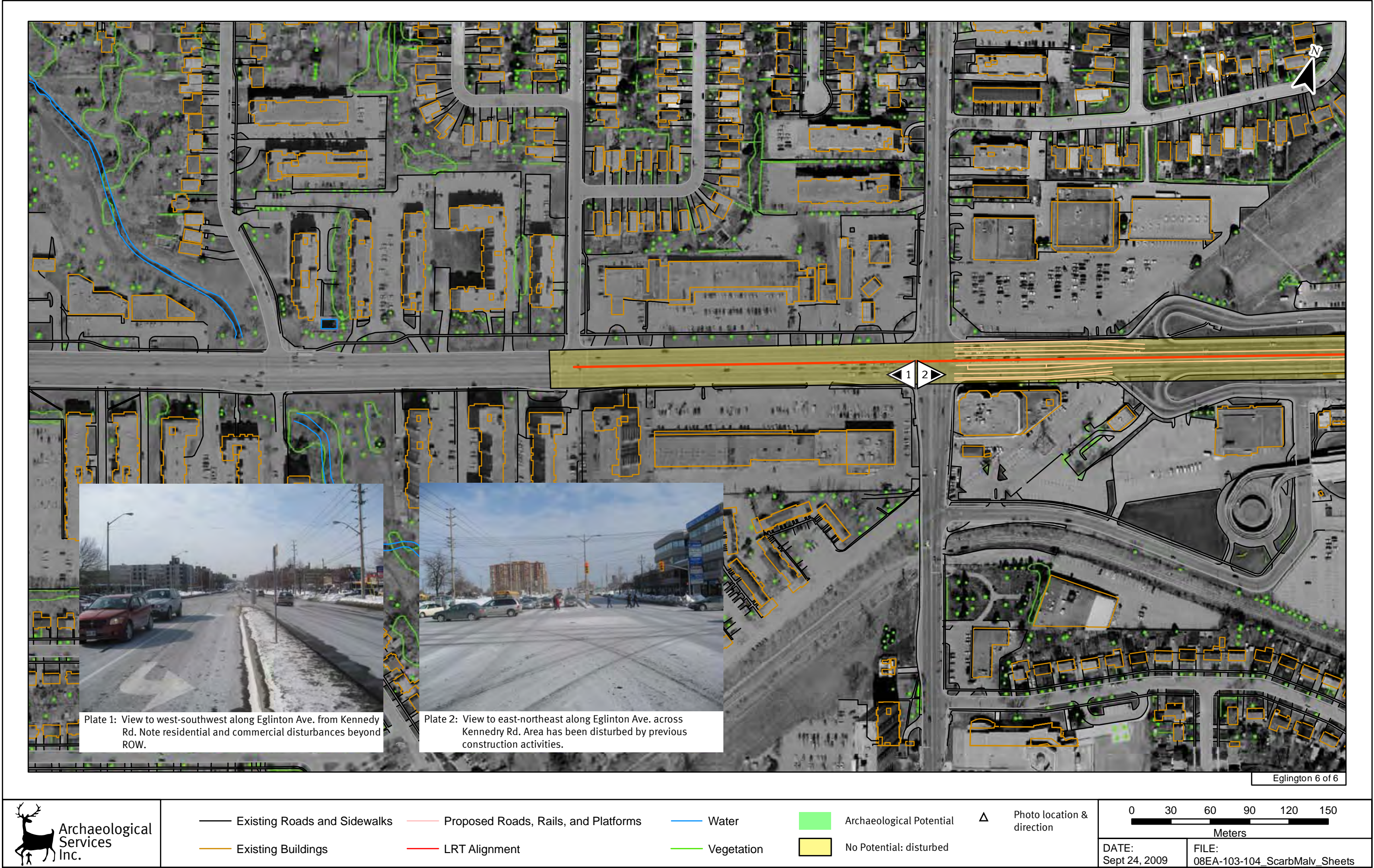


Figure 6-1: Scarborough-Malvern LRT Environmental Assessment - Results of the Stage 1 Archaeological Assessment



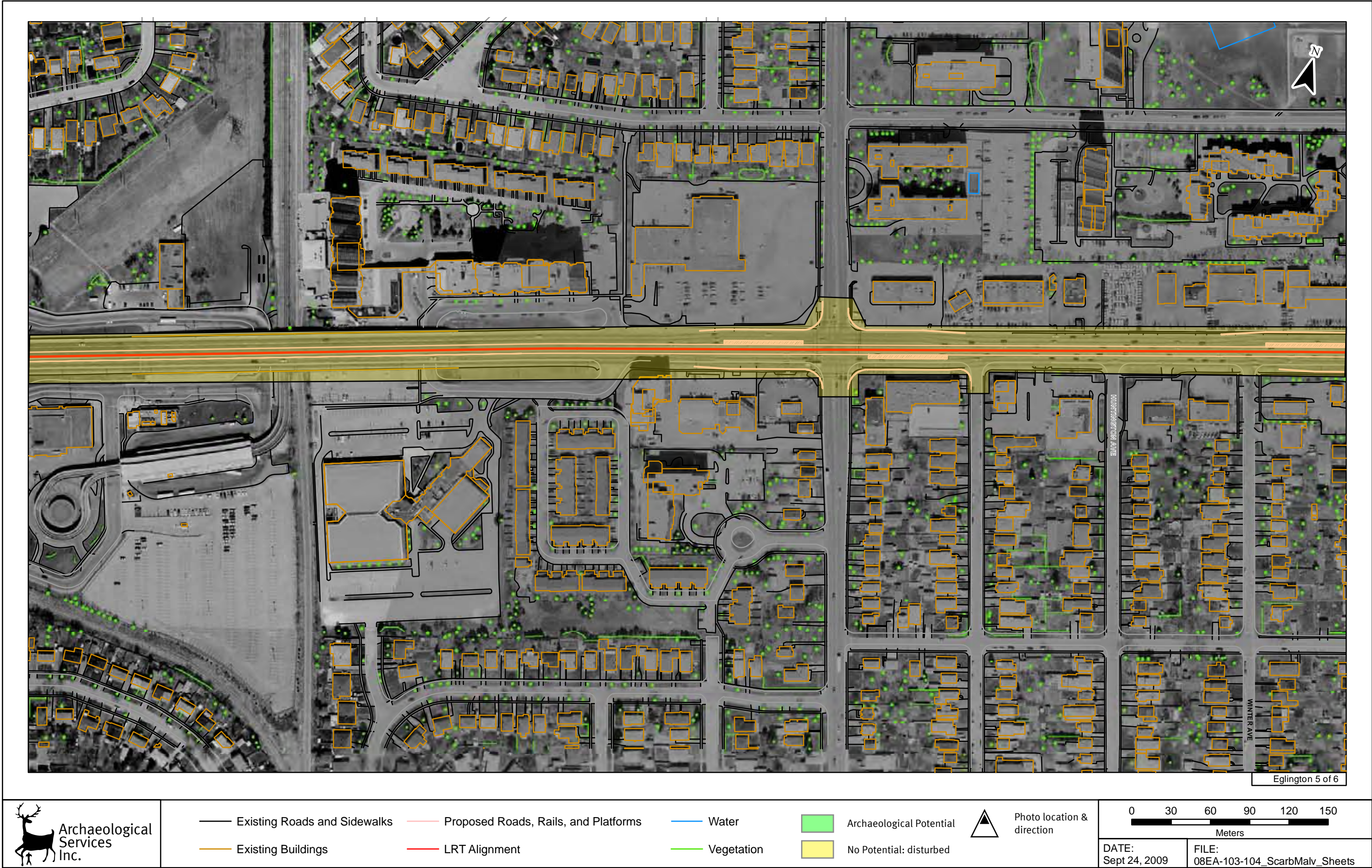


Figure 6-2: Scarborough-Malvern LRT Environmental Assessment - Results of the Stage 1 Archaeological Assessment



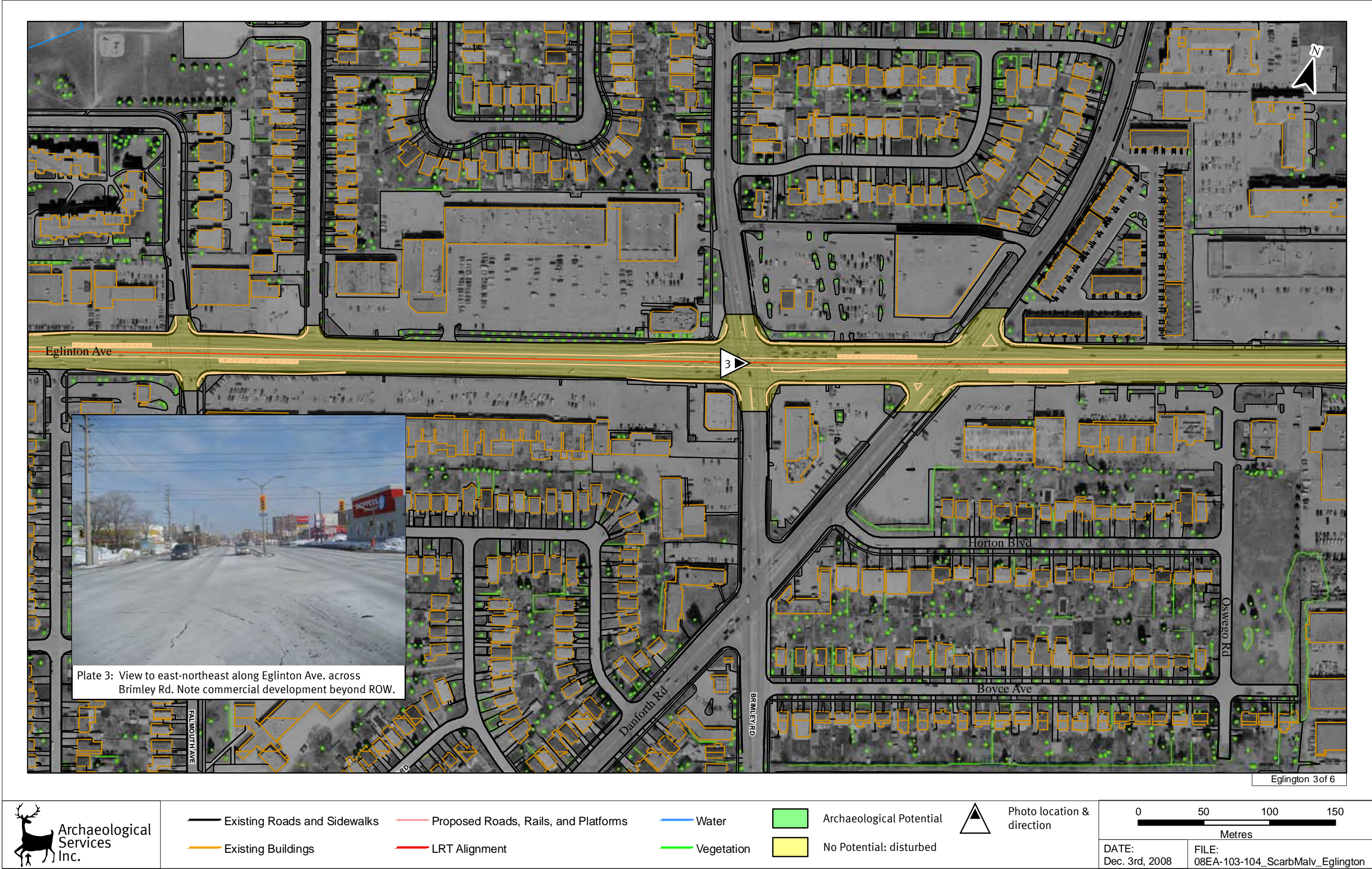


Figure 6-3: Scarborough-Malvern LRT Environmental Assessment - Results of the Stage 1 Archaeological Assessment



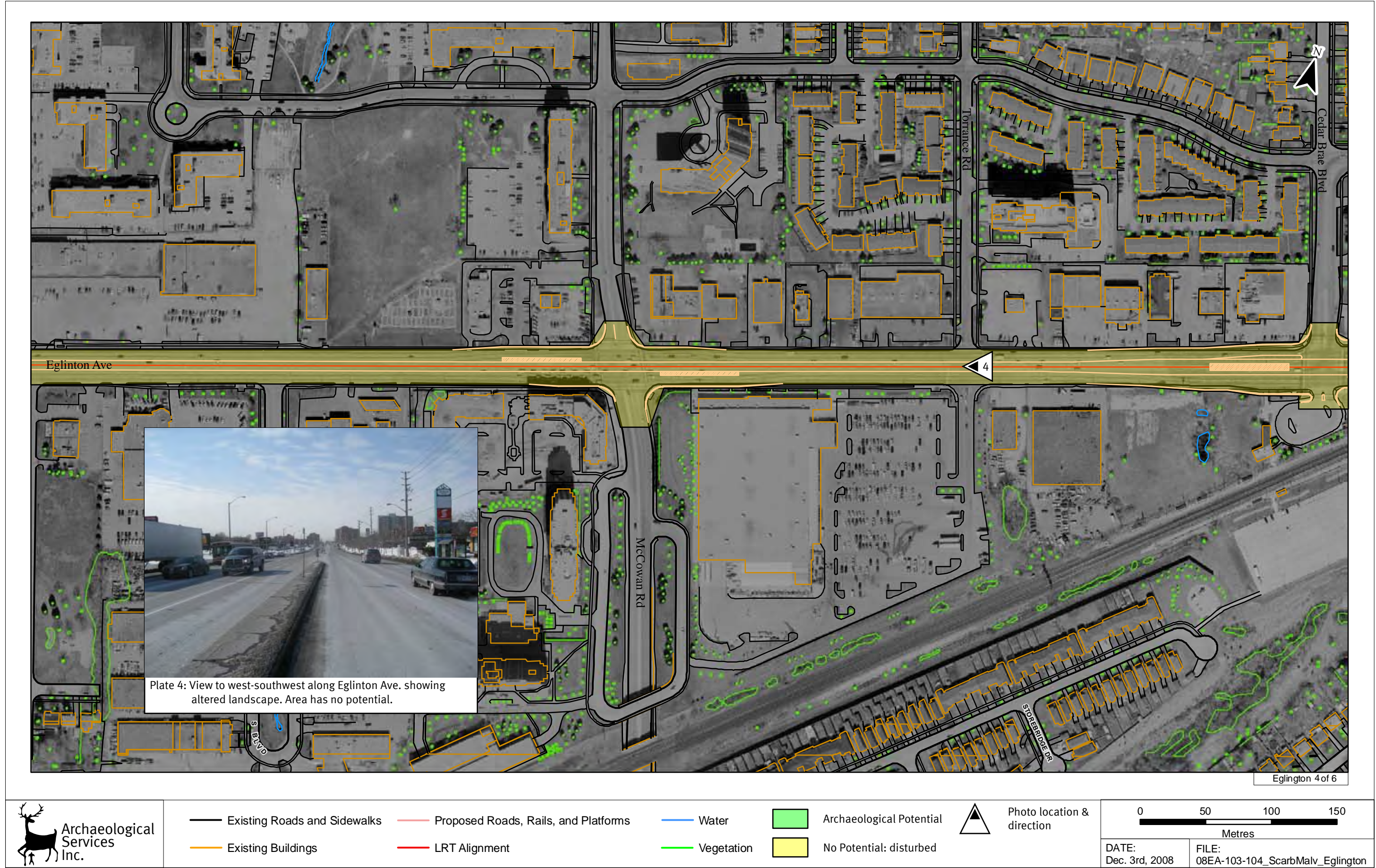


Figure 6-4: Scarborough-Malvern LRT Environmental Assessment - Results of the Stage 1 Archaeological Assessment



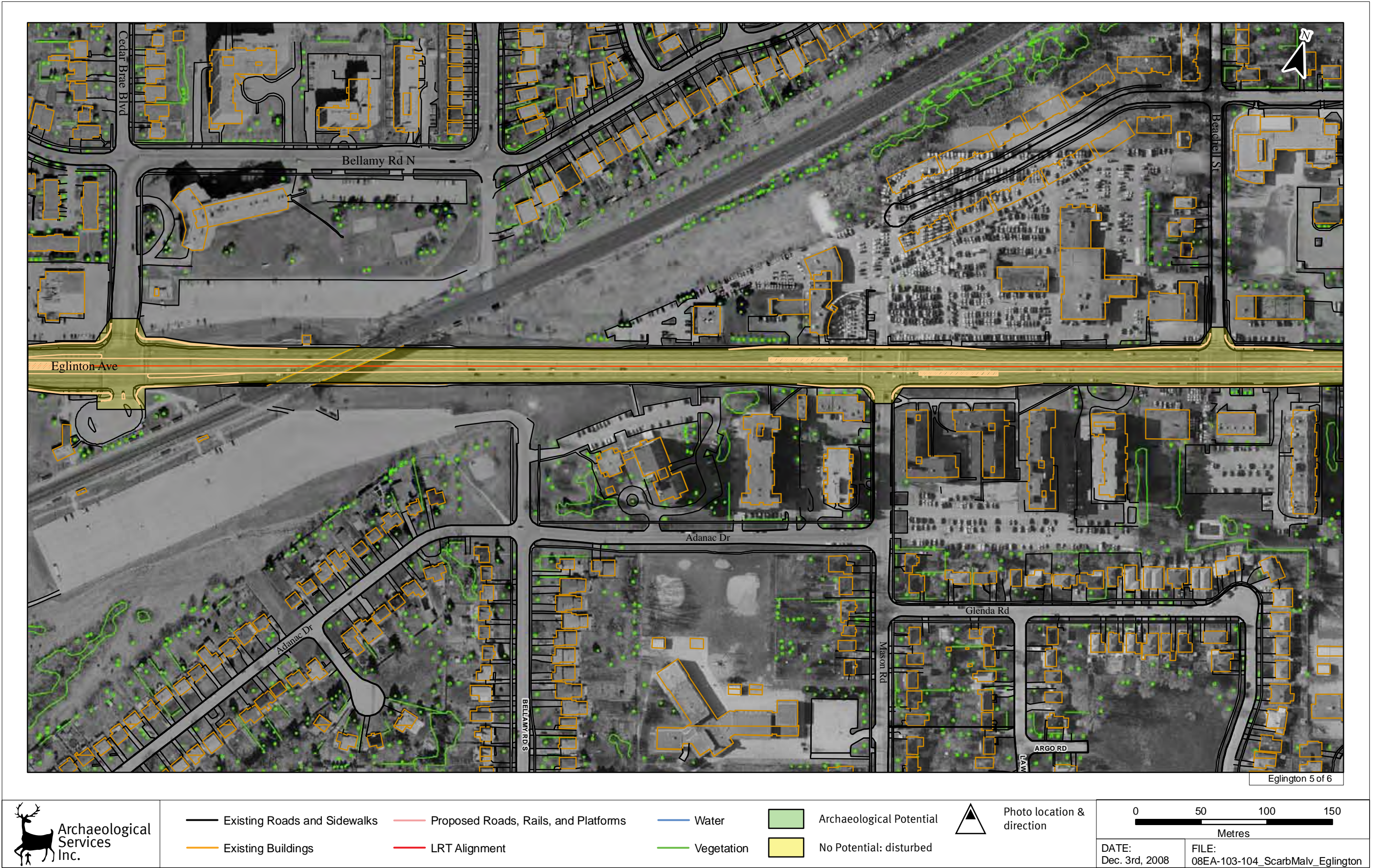


Figure 6-5: Scarborough-Malvern LRT Environmental Assessment - Results of the Stage 1 Archaeological Assessment



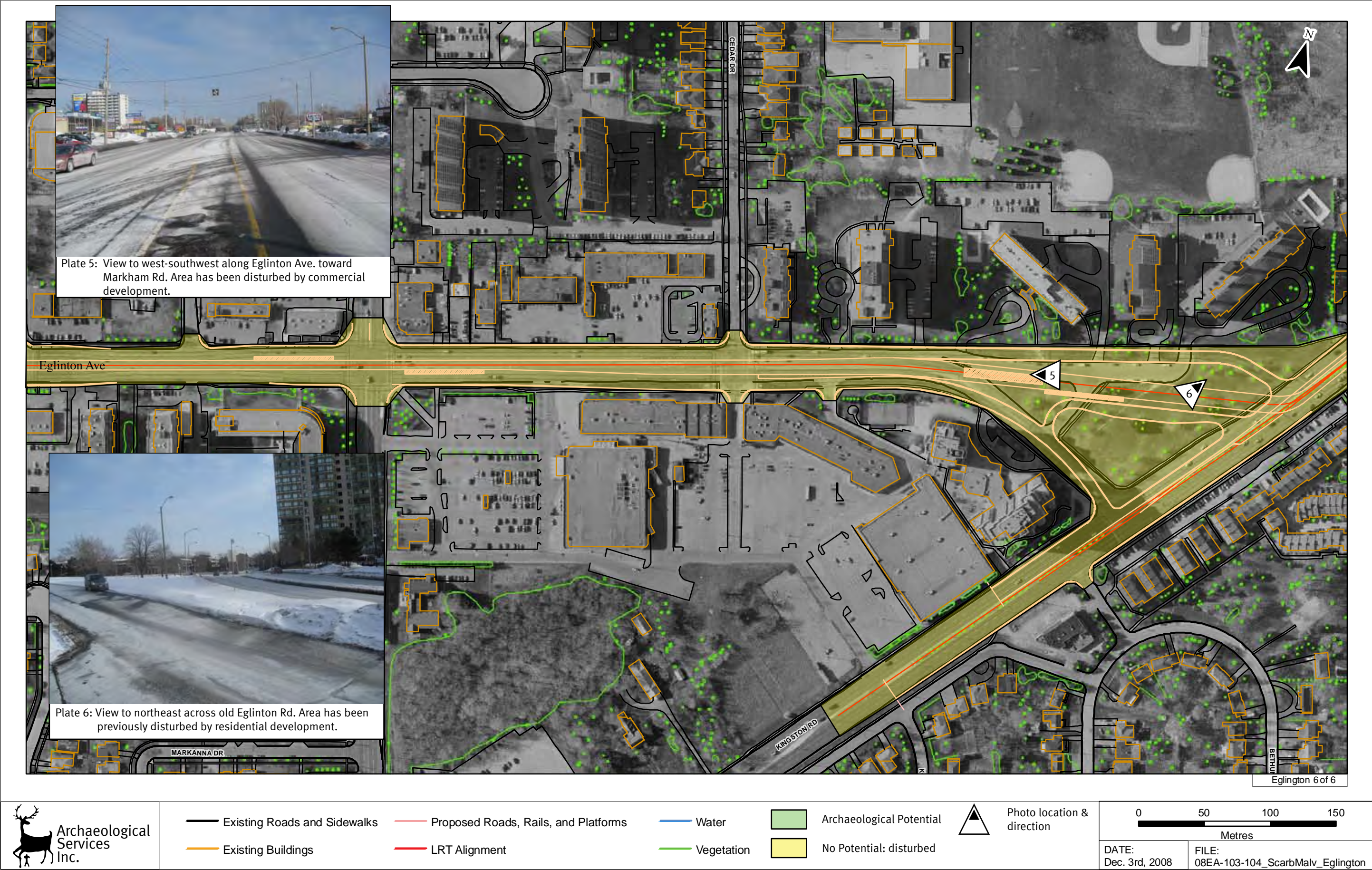
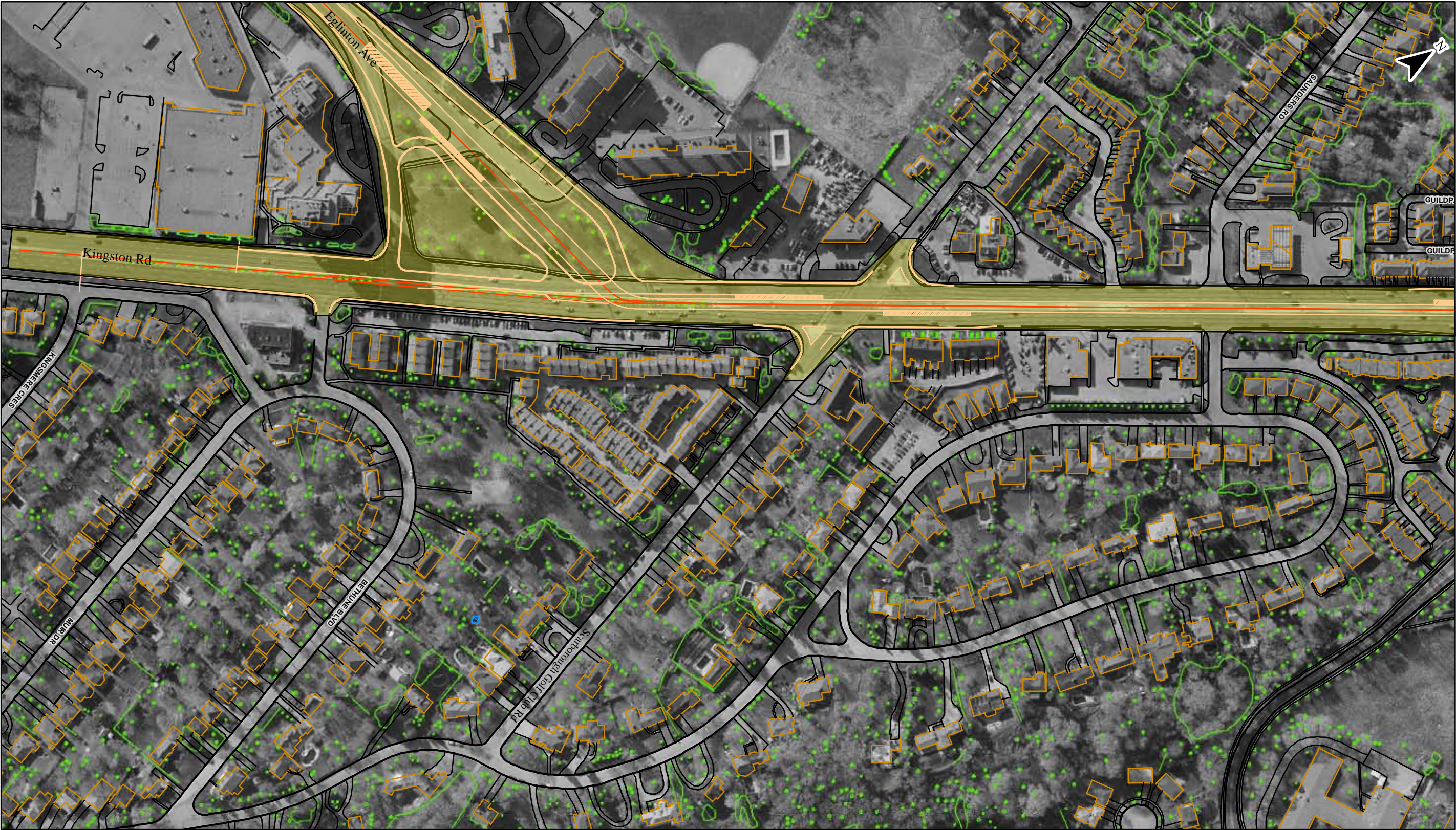


Figure 6-6: Scarborough-Malvern LRT Environmental Assessment - Results of the Stage 1 Archaeological Assessment





Kingston 1 of 5



- |                                |  |              |                          |                              |
|--------------------------------|--|--------------|--------------------------|------------------------------|
| — Existing Roads and Sidewalks | — Proposed Roads, Rails, and Platforms | — Water      | Archaeological Potential | ▲ Photo location & direction |
| — Existing Buildings           | — LRT Alignment                        | — Vegetation | No Potential: disturbed  |                              |

|                         |  |
|-------------------------|--|
| 0 50 100 150<br>Metres  |  |
| DATE:<br>Dec. 3rd, 2008 | FILE:<br>08EA-103-104_ScarbMalv_Kingston |


Figure 7-1: Scarborough-Malvern LRT Environmental Assessment - Results of the Stage 1 Archaeological Assessment





Plate 7: View to north-northeast along Kingston Rd. Landscape has been altered by residential development and has no potential.

Kingston 2 of 5



Archaeological Services Inc.

|                              |                                      |            |                          |                            |
|------------------------------|--------------------------------------|------------|--------------------------|----------------------------|
| Existing Roads and Sidewalks | Proposed Roads, Rails, and Platforms | Water      | Archaeological Potential | Photo location & direction |
| Existing Buildings           | LRT Alignment                        | Vegetation | No Potential: disturbed  |                            |

0 50 100 150

Metres

DATE: Dec. 3rd, 2008

FILE: 08EA-103-104\_ScarbMalv\_Kingston

Figure 7-2: Scarborough-Malvern LRT Environmental Assessment - Results of the Stage 1 Archaeological Assessment





Plate 8: View to south-southwest across Galloway Rd. Area has been previously disturbed by construction activities.

Kingston 3 of 5



Existing Roads and Sidewalks

Existing Buildings

Proposed Roads, Rails, and Platforms

LRT Alignment

Water

Vegetation



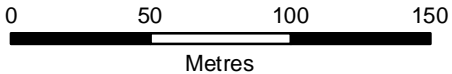
Archaeological Potential



No Potential: disturbed



Photo location & direction



DATE:  
Dec. 3rd, 2008

FILE:  
08EA-103-104\_ScarbMalv\_Kingston

Figure 7-3: Scarborough-Malvern LRT Environmental Assessment - Results of the Stage 1 Archaeological Assessment





Figure 7-4: Scarborough-Malvern LRT Environmental Assessment - Results of the Stage 1 Archaeological Assessment





Figure 7-5: Scarborough-Malvern LRT Environmental Assessment - Results of the Stage 1 Archaeological Assessment



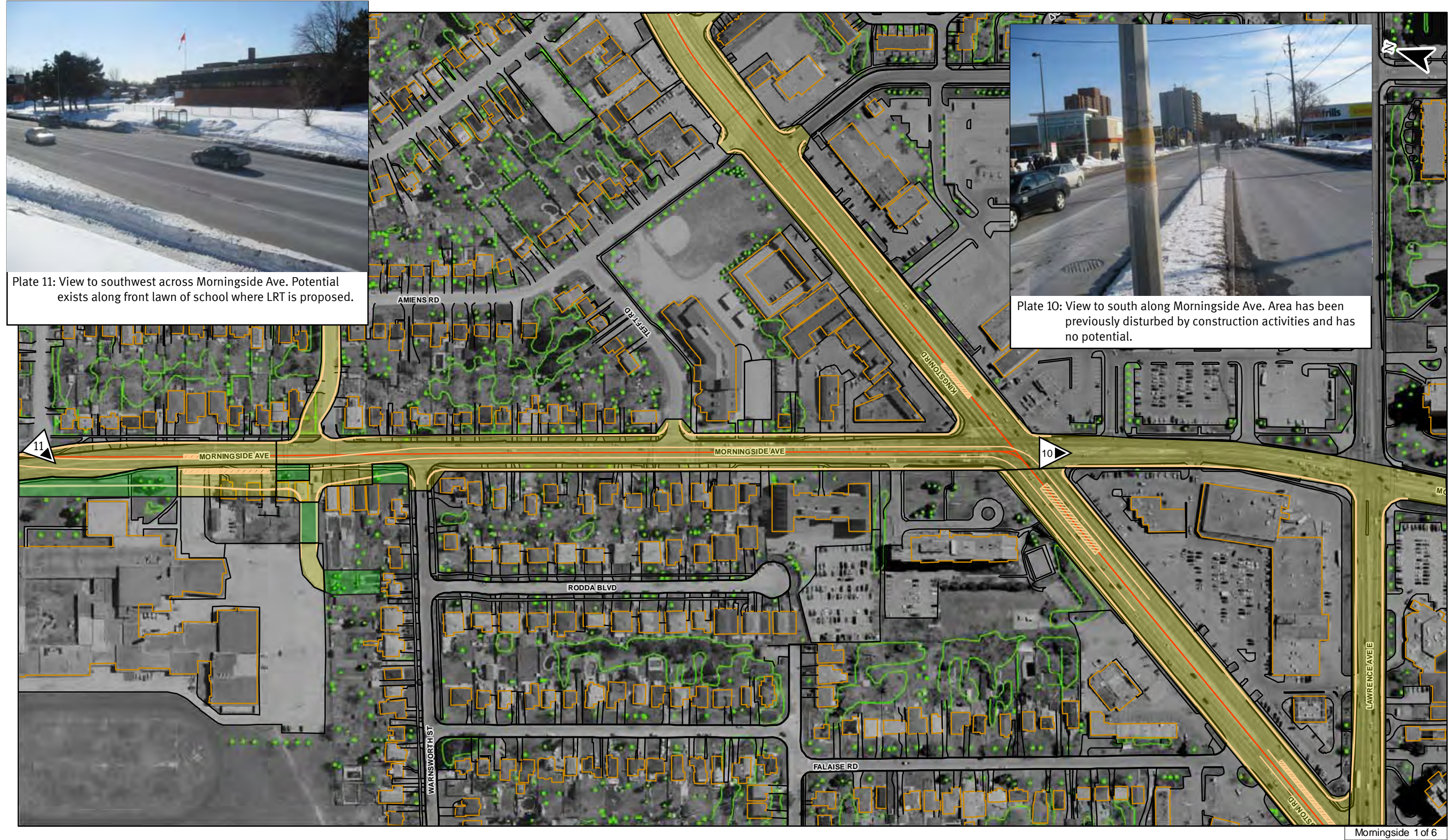


Figure 8-1: Scarborough-Malvern LRT Environmental Assessment - Results of the Stage 1 Archaeological Assessment



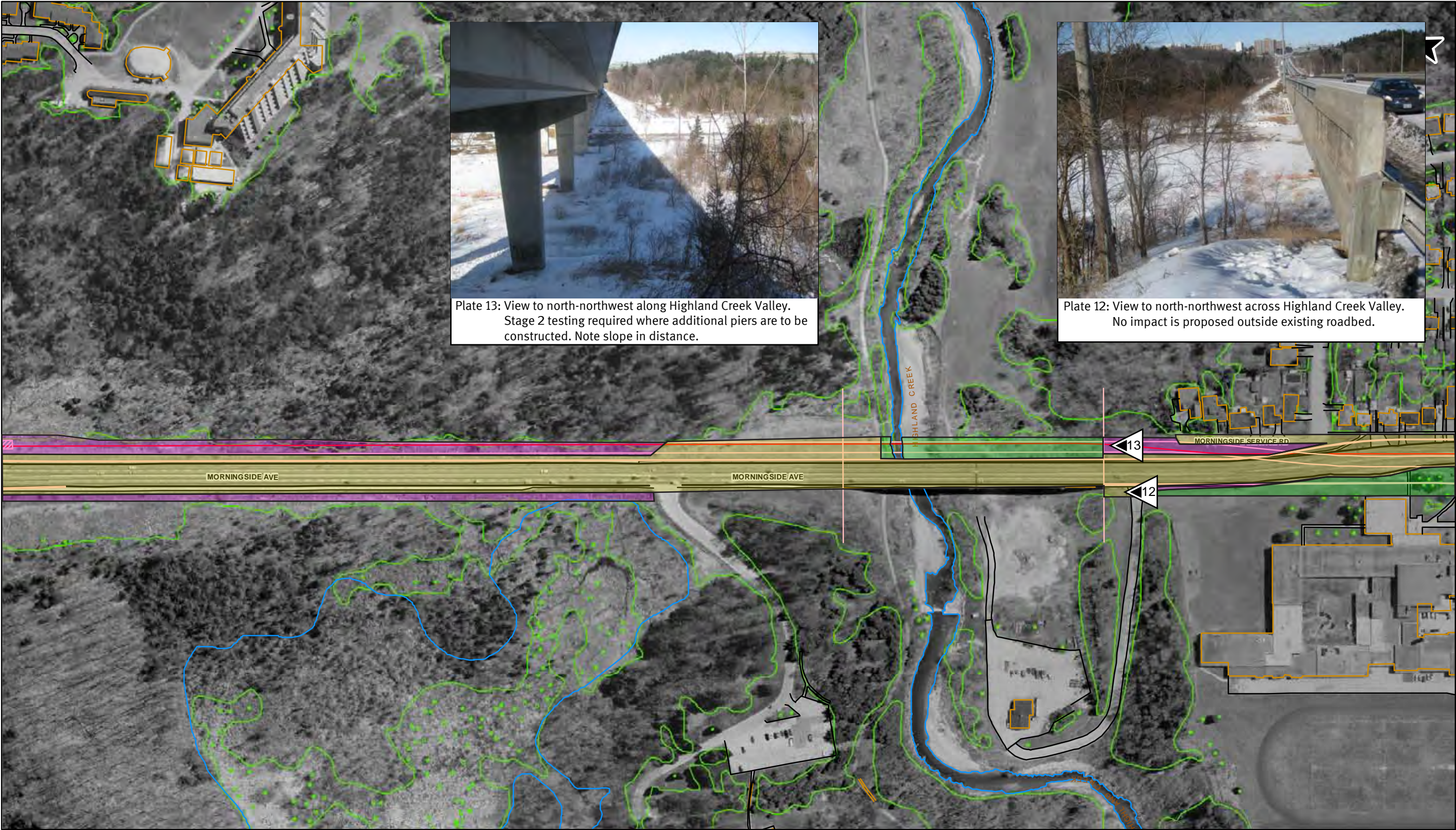


Plate 13: View to north-northwest along Highland Creek Valley. Stage 2 testing required where additional piers are to be constructed. Note slope in distance.



Plate 12: View to north-northwest across Highland Creek Valley. No impact is proposed outside existing roadbed.



Existing Roads and Sidewalks

Existing Buildings

Proposed Roads, Rails, and Platforms

LRT Alignment

Water

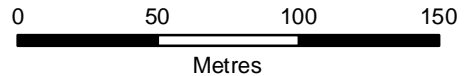
Vegetation

Archaeological Potential

No Potential: disturbed

No Potential: slope

Photo location & direction



DATE:  
Dec. 3rd, 2008

FILE:  
08EA-103-104\_ScarbMalv\_Morning

Figure 8-2: Scarborough-Malvern LRT Environmental Assessment - Results of the Stage 1 Archaeological Assessment



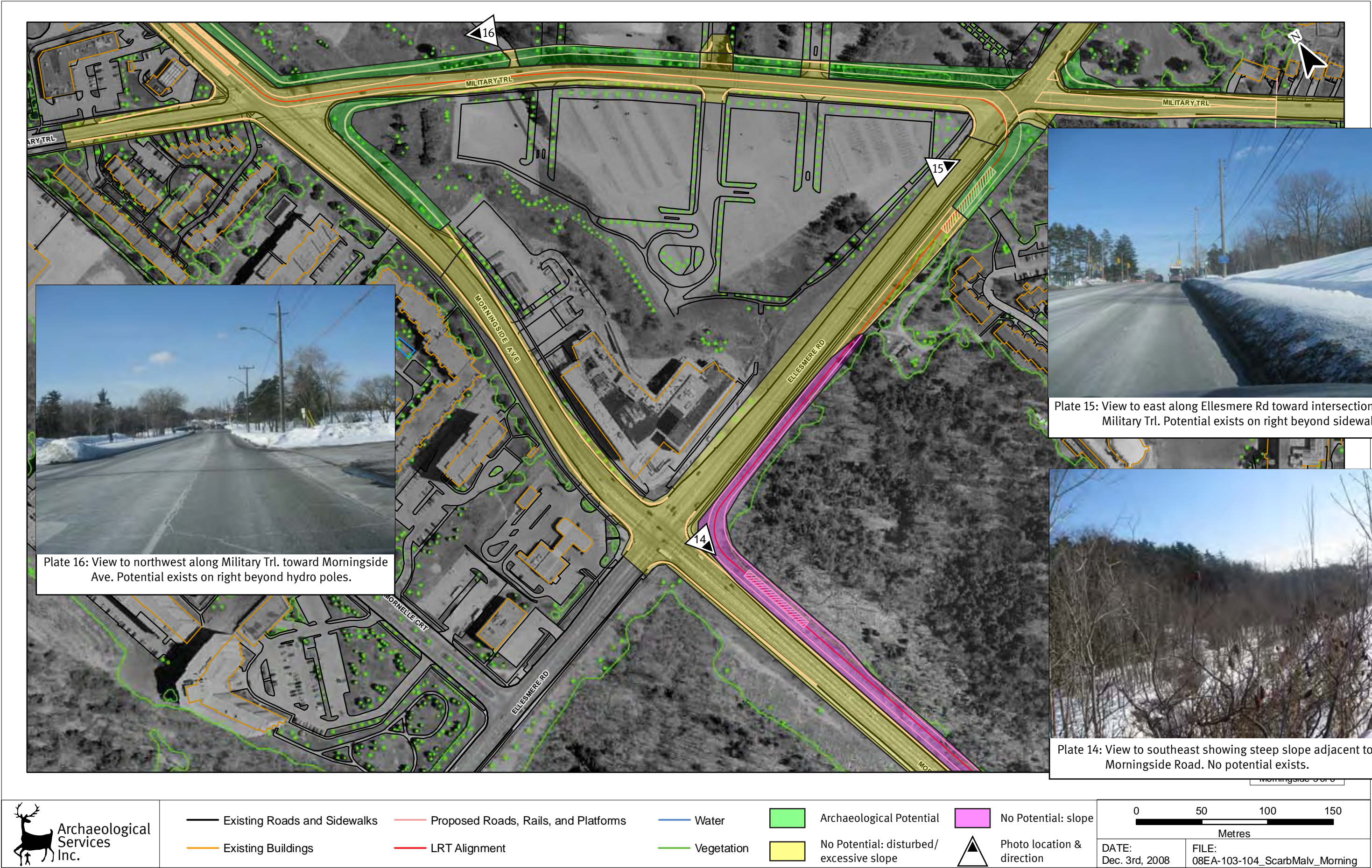
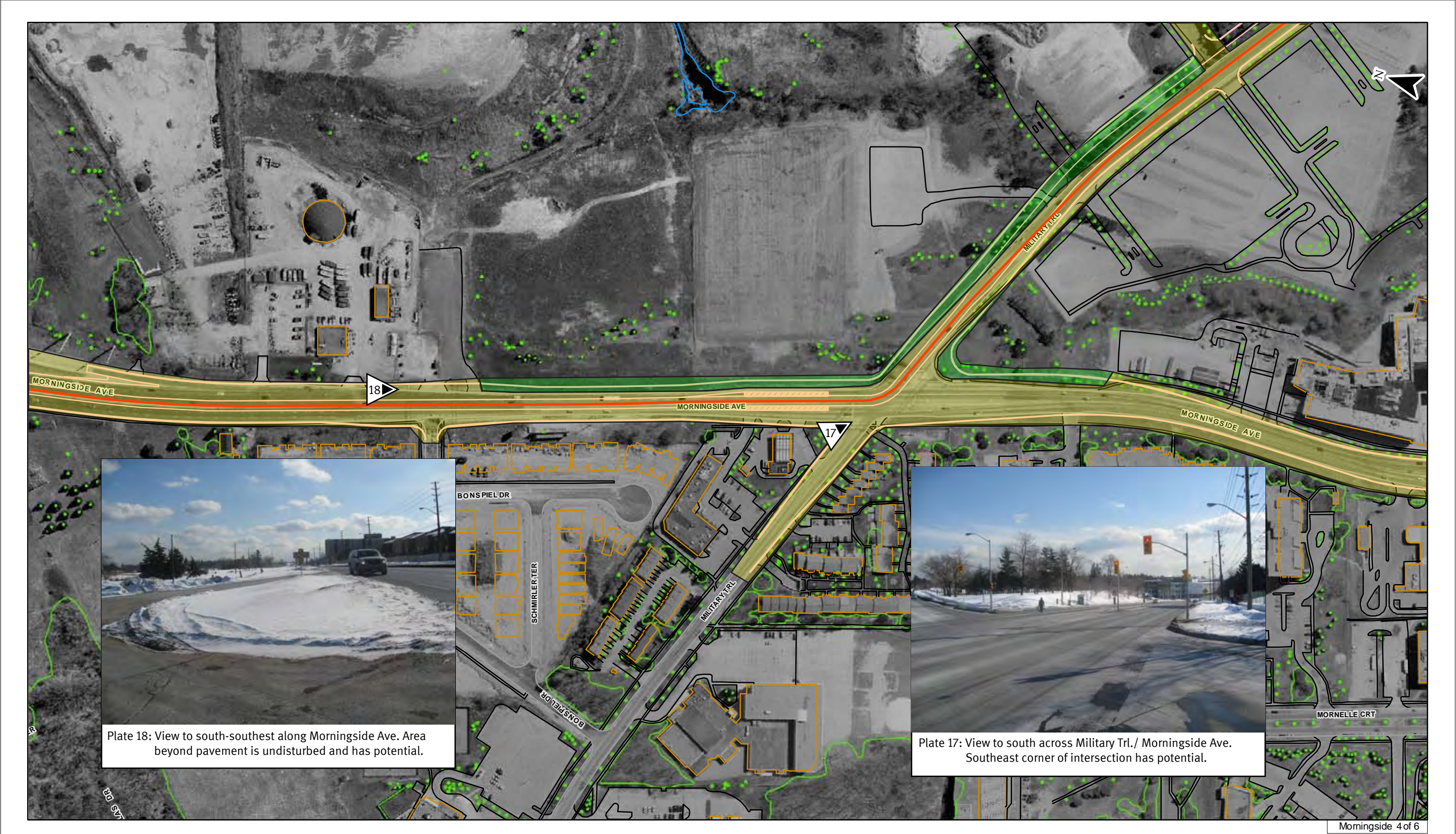


Figure 8-3: Scarborough-Malvern LRT Environmental Assessment - Results of the Stage 1 Archaeological Assessment





Existing Roads and Sidewalks

Existing Buildings

Proposed Roads, Rails, and Platforms

LRT Alignment

Water

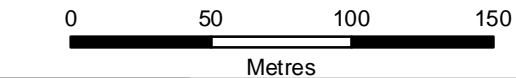
Vegetation

Archaeological Potential

No Potential: disturbed



Photo location & direction



DATE:  
Dec. 3rd, 2008

FILE:  
08EA-103-104\_ScarbMalv\_Morning

Figure 8-4: Scarborough-Malvern LRT Environmental Assessment - Results of the Stage 1 Archaeological Assessment



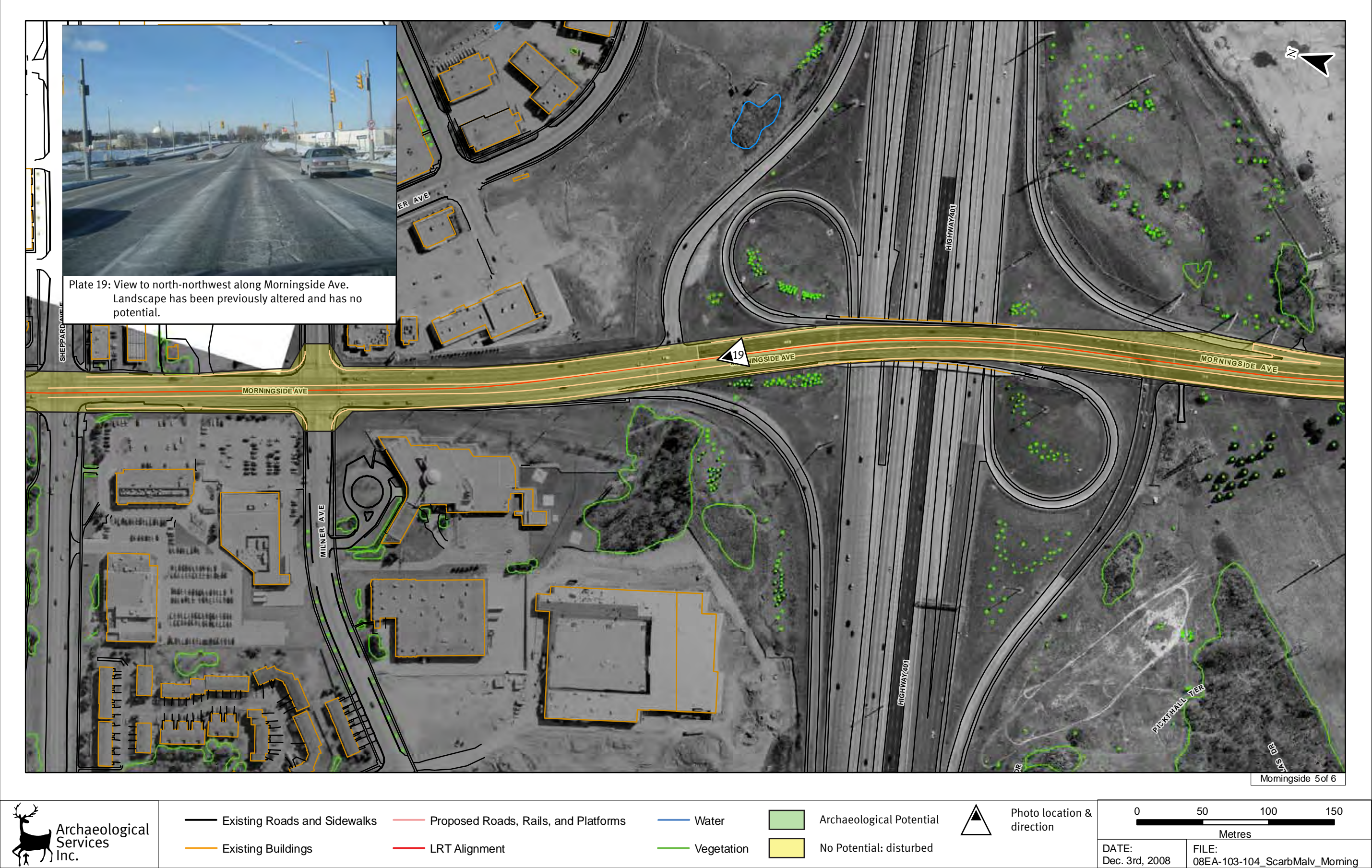


Figure 8-5: Scarborough-Malvern LRT Environmental Assessment - Results of the Stage 1 Archaeological Assessment





Figure 8-6: Scarborough-Malvern LRT Environmental Assessment - Results of the Stage 1 Archaeological Assessment



**Stage 1 Archaeological Resource Assessment**  
**Sheppard East Light Rail Vehicle Maintenance and  
Storage Facility Environmental Assessment,  
City of Toronto, Ontario**

Prepared for:

**AECOM**  
300 Town Centre Blvd, Suite 300  
Markham, Ontario L3R 5Z6  
Tel: (905) 477-8400  
Fax: (905) 477-1456

Archaeological Licence P057 (Pihl)  
MCL PIF P057-548-2009  
ASI File 09EA-068

September 2009  
(Revised February 2010)



**Archaeological Services Inc.**  
528 Bathurst St.  
Toronto, Ontario  
Canada, M5S 2P9  
T 416-966-1069  
F 416-966-9723  
info@iASI.to/www.iASI.to





# Archaeological Services Inc.

528 Bathurst St.  
Toronto, Ontario  
Canada, M5S 2P9  
T 416-966-1069  
F 416-966-9723  
info@IASI.to/www.IAS±.to

## LEGEND



Study Area



Archaeological Potential



No Potential: disturbed



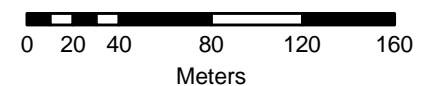
No Potential: low/wet



No Potential: slope



Photo Location & Direction



ASI PROJECT NO.: 09EA068\_069  
DATE: August 25th, 2009

DRAWN BY: J.F.  
FILE: 09EA68\_69\_s1

Figure 3: TTC LRT Facilities (Scarborough) Class EA - Results of the Stage 1 Archaeological Assessment



**Stage 1 Archaeological Assessment  
(Background Research and Property Inspection)**

**Kennedy Station Re-Development,  
City of Toronto, Ontario**

Prepared for:

**AECOM Canada Ltd.**  
201-45 Goderich Road,  
Hamilton, ON L8E 4W8  
Tel: 905-578-3040  
Fax: 905-578-4129  
Email: [karin.wall@aecom.com](mailto:karin.wall@aecom.com)  
Web: [www.aecom.com](http://www.aecom.com)

Archaeological Licence P057 (Robert Pihl)  
MTC PIF P057-604-2010  
ASI File 10EA-017

March 2010



**Archaeological Services Inc.**  
528 Bathurst St. T 416-966-1069  
Toronto, Ontario F 416-966-9723  
Canada, M5S 2P9 [info@iASI.to](mailto:info@iASI.to)/[www.iASI.to](http://www.iASI.to)





**Archaeological Services Inc.**  
528 Bathurst St.  
Toronto, Ontario  
Canada, M5S 2P9  
T 416-966-1069  
F 416-966-9723  
info@iASI.to/www.iASi.to

**LEGEND**



Archaeological Potential



No Potential: disturbed



Bethel Cemetery



Photo Location & Direction

ASI PROJECT NO.: 10EA-017  
DATE: March 2010

DRAWN BY: CL  
FILE: 10EA-017 Fig 5 results

Figure 5: Kennedy Station Re-Development - Results of the Stage 1 Archaeological Assessment



**REVISED Stage 1 Archaeological Assessment  
(Background Research and Property Inspection)**

**Scarborough Rapid Transit Extension,  
Sheppard East Station,  
City of Toronto, Ontario**

Prepared for:

**Watters Environmental Group Inc.**

8800 Dufferin Street, Suite 303

Concord, ON L4K 0C5

Tel: 416-361-2407

Fax: 416-361-2410

Email: [lmccarthy@wattersenvironmental.com](mailto:lmccarthy@wattersenvironmental.com)

Web: <http://www.wattersenvironmental.com>

Archaeological Licence P057 (Robert Pihl)

MCL PIF P057-598-2010

ASI File 10EA-032

November 2010



**Archaeological Services Inc.**

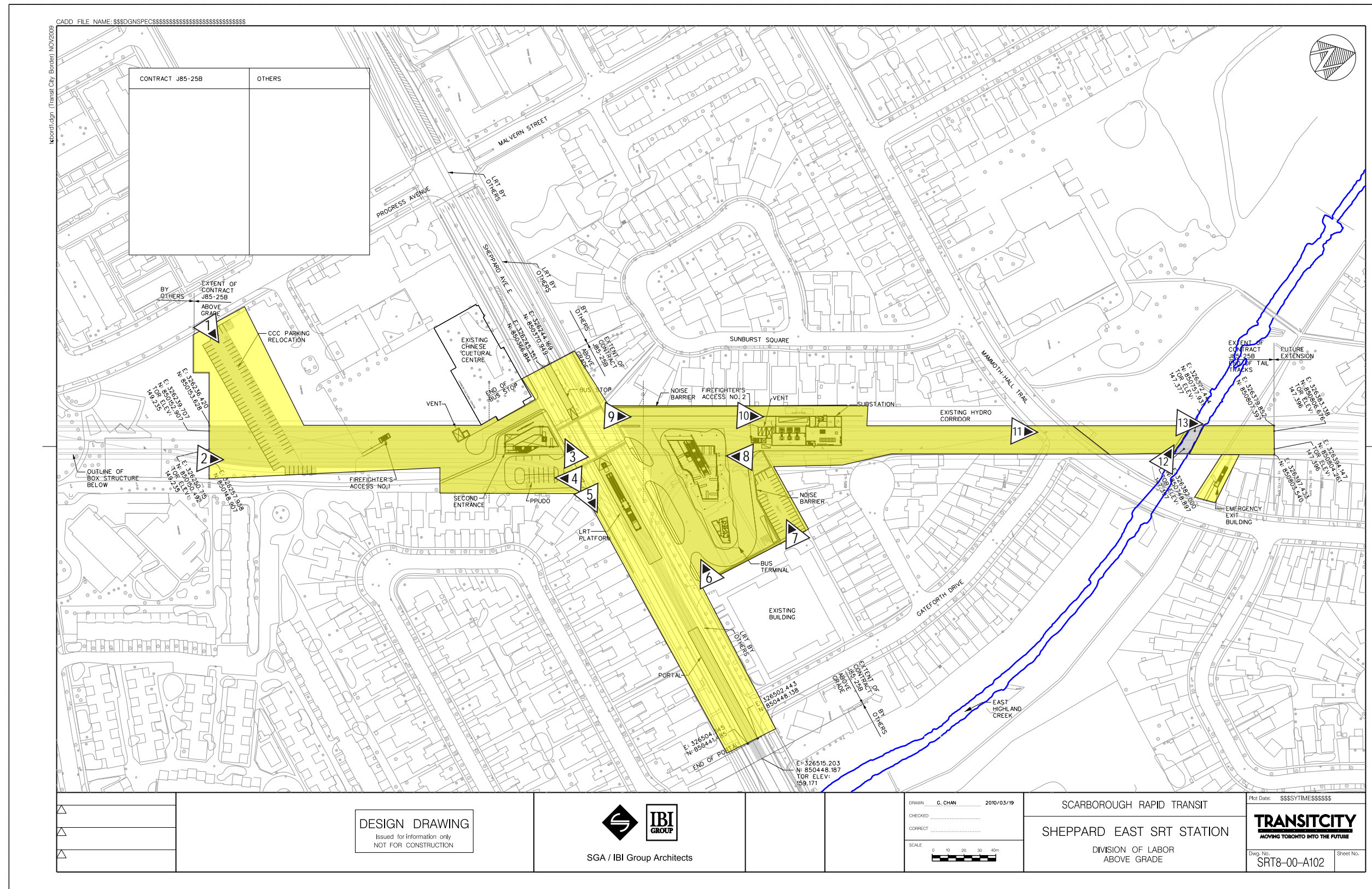
528 Bathurst St.  
Toronto, Ontario  
Canada, M5S 2P9

T 416-966-1069

F 416-966-9723

[info@iASI.to](mailto:info@iASI.to)/[www.iASI.to](http://www.iASI.to)







237910

## STAGE 1 ARCHAEOLOGICAL ASSESSMENT

### Sheppard Avenue East Light Rail Transit Class Environmental Assessment Study

Prepared for:  
City of Toronto

Toronto Transit Commission  
1900 Yonge Street  
Toronto, Ontario  
M4S 1Z2

Prepared by:  
URS Canada Inc.  
Consulting Engineers & Geoscientists  
75 Commerce Valley Drive East  
Markham, Ontario, L3T 7N9  
Tel: 905-882-4401  
Email: urs\_markham@urscorp.com

Licensee:  
Anthony McNichol  
(P290)

P290-005-2008





CADD FILE NAME: D:\3-3321574 Sheppard Ave LRT EA\CADD\Plates\Archaeology Report\Fig06.dwg

FIGURE 6



Plate 4: Looking at the northeast corner of the intersection of Markham Road and Sheppard Avenue East

Plate 6: Looking south at a branch of the Highland Creek that underpasses Sheppard Avenue East between Gateforth Drive and Washburn Way



Plate 3: Looking north at a branch of the Highland Creek that intersects the study area between McCowan Road and Shorting Road



Plate 5: The lot which is east of Markham Road, on the south side of Sheppard Avenue East between Markham Road and Progress Avenue



Plate 7: Looking southwest at the intersection of Washburn Way (Lapsley Road) and Sheppard Avenue East

BLDG REF No.  
FILE  
SHEET No.  
DRAWING No.

| REVISIONS | REVISIONS |
|-----------|-----------|
|           |           |
|           |           |
|           |           |
|           |           |

LEGEND



URS

URS Architecture & Engineering Canada Inc.  
1700 Sheppard Avenue East, Suite 200  
Markham, Ontario, L3R 9V4  
Tel: (905) 477-1000 Fax: (905) 477-1001

Scale: 1" = 100'  
Date: 11/3/2008  
Sheet: 1 of 1

SHEPPARD AVENUE LRT EA  
ARCHAEOLOGICAL ASSESSMENT  
DON MILLS STATION TO MEADOWVALE ROAD  
PLAN

Project No. 11/3/2008  
TORONTO TRANSIT COMMISSION  
ENGINEERING DEPARTMENT  
Drawn By: [Name]  
Checked By: [Name]



CADD FILE NAME: D:\3-30510764 Sheppard Ave LRT EA\CADD\Plate\Archaeology Report\Arch04.dwg



BUILDING REF. NO.  
FILE  
SHEET NO.  
PROJ. NO.

| REVISION | REVISIONS |
|----------|-----------|
|          |           |
|          |           |
|          |           |

LEGEND

EXISTING ARCHAEOLOGICAL REMAINS  
PROPOSED ARCHAEOLOGICAL REMAINS  
PROPOSED LRT ALIGNMENT  
PROPOSED LRT STATION

**URS**

URS ARCHITECTURE & ENGINEERING CONSULTANTS  
75 COMMERCE VILLAGE, UNIT 100  
MARKHAM, ONTARIO L3R 9V7  
TEL: 905-477-0000 FAX: 905-477-0001

PROJECT NO. 30510764  
SHEET NO. 04 OF 04  
DATE: 01/11/2011

DESIGNED BY: [Name]  
CHECKED BY: [Name]  
DATE: 01/11/2011

SHEPPARD AVENUE LRT EA  
ARCHAEOLOGICAL ASSESSMENT  
DON MILLS STATION TO MEADOWVALE ROAD  
PLAN

Rev. Date: 01/11/2011  
TORONTO TRANSIT COMMISSION  
ENGINEERING DEPARTMENT  
Drawn By: [Name]  
Checked By: [Name]